

# Lawrence Berkeley National Laboratory

## Recent Work

### Title

Heavy Ion Fusion Injector Program

### Permalink

<https://escholarship.org/uc/item/2v92p510>

### Authors

Yu, S.

Eylon, S.

Chupp, W.W.

et al.

### Publication Date

1992-12-02



# Lawrence Berkeley Laboratory

UNIVERSITY OF CALIFORNIA

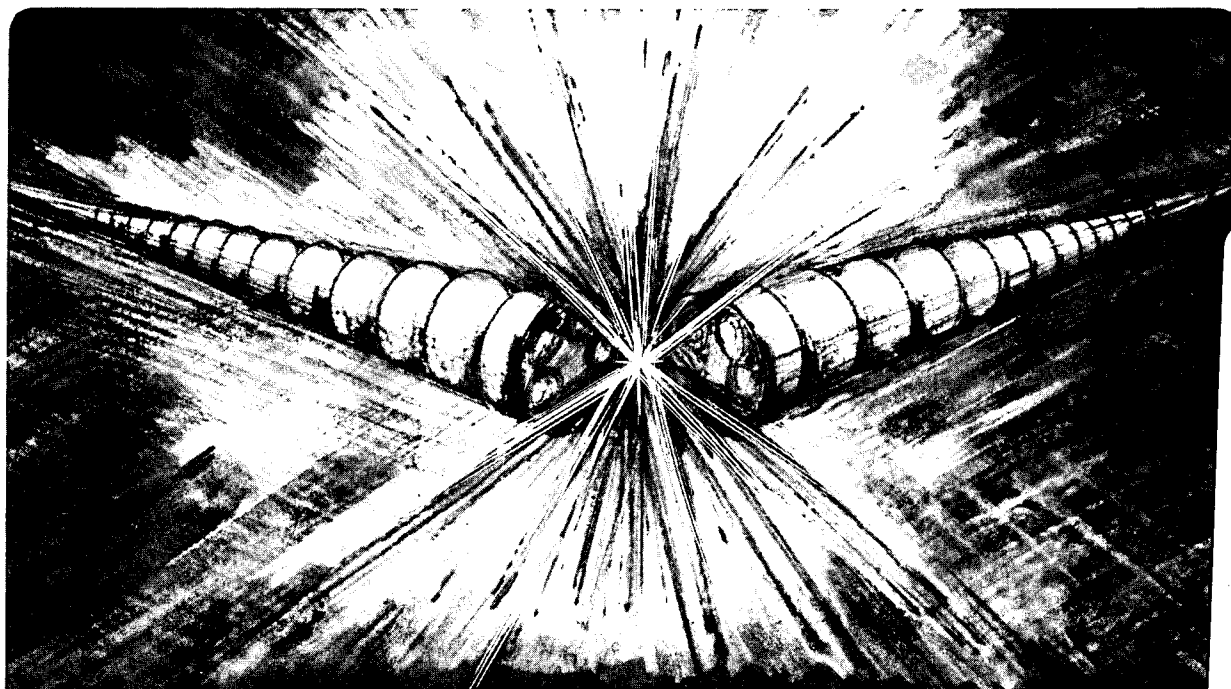
## Accelerator & Fusion Research Division

Presented at the IEEE Particle Accelerator Conference,  
Washington, D.C., May 17-20, 1993, and to be published  
in the Proceedings

### Heavy Ion Fusion Injector Program

S. Yu, S. Eylon, W.W. Chupp, A. Faltens, T. Fessenden,  
E. Henestroza, R. Hipple, D. Judd, C. Peters, L. Reginato,  
H. Rutkowski, J. Stoker, D. Vanecek, J. Barnard, G. Caporaso,  
Y.J. Chen, F. Deadrick, A. Friedman, D. Grote, and D. Hewett

May 1993



Prepared for the U.S. Department of Energy under Contract Number DE-AC03-76SF00098

LOAN COPY  
Circulates  
for 4 weeks

Bldg. 50 Library.  
Copy 2

LBL-33289

## **DISCLAIMER**

This document was prepared as an account of work sponsored by the United States Government. While this document is believed to contain correct information, neither the United States Government nor any agency thereof, nor the Regents of the University of California, nor any of their employees, makes any warranty, express or implied, or assumes any legal responsibility for the accuracy, completeness, or usefulness of any information, apparatus, product, or process disclosed, or represents that its use would not infringe privately owned rights. Reference herein to any specific commercial product, process, or service by its trade name, trademark, manufacturer, or otherwise, does not necessarily constitute or imply its endorsement, recommendation, or favoring by the United States Government or any agency thereof, or the Regents of the University of California. The views and opinions of authors expressed herein do not necessarily state or reflect those of the United States Government or any agency thereof or the Regents of the University of California.

LBL-33289  
HIFAN-574

**Heavy Ion Fusion Injector Program**

S. Yu, S. Eylon, W. W. Chupp, A. Faltens, and T. Fessenden  
E. Henestroza, R. Hipple, D. Judd, C. Peters, L. Reginato,  
H. Rutkowski, J. Stoker, and D. Vanecek  
Accelerator & Fusion Research Division  
Lawrence Berkeley Laboratory  
University of California  
Berkeley, California 94720

J. Barnard, G. Caporaso, Y. J. Chen, F. Deadrick,  
A. Friedman, D. Grote, and D. Hewett  
Lawrence Livermore Laboratory  
7000 East Avenue  
P. O. Box 808  
Livermore, CA 94550

Submitted to the 1993 Particle Accelerator Conference  
Washington, D. C., May 17 - 20, 1993

\*This work was supported by the Office of Energy Research, Office of Fusion Energy,  
U. S. Department of Energy under Contract No. DE-AC03-76SF00098.

# Heavy Ion Fusion Injector Program\*

S. Yu, S. Eylon, W.W. Chupp, A. Faltens, T. Fessenden, E. Henestroza, R. Hipple, D. Judd, C. Peters, L. Reginato, H. Rutkowski, J. Stoker, D. Vanecsek; LBL  
J. Barnard, G. Caporaso, Y.J. Chen, F. Deadrick, A. Friedman, D. Grote, D. Hewett, LLNL  
University of California Lawrence Berkeley Laboratory  
1 Cyclotron Road, MS 47-112, Berkeley, CA 94720 USA

## Abstract

A program is underway to construct a 2 MV, 800 mA,  $K^+$  injector for heavy ion fusion. The Electrostatic Quadrupole (ESQ) injector configuration consists of a zeolite source, a diode of up to 1 MV, together with several electrostatic quadrupole units to simultaneously focus and accelerate the beam to 2 MV. The key issues of source technology, high voltage breakdown, beam aberrations, and transient effects will be discussed. Results from ongoing experiments and simulations will be presented.

## I. INTRODUCTION

A new high current ion injector for heavy ion fusion is under construction at Lawrence Berkeley Laboratory. The objective is to build a one-beam version of the 4-beam injector needed for the Induction Linac System Experiments (ILSE). As such, the machine must have high reliability, and the technology must be scalable to the ultimate full-scale fusion driver. The design goals for the  $K^+$  ion beam are driver-scale line charge density ( $0.25 \mu C/m A$ ), driver scale particle energy (2 MV), very low emittance (normalized emittance of less than  $1\pi \text{ mm-mr}$ ) repetition rate of 1 Hz, and pulse length of 1  $\mu s$ . While all previous injectors in the Heavy Ion Fusion Accelerator Research (HIFAR) group at LBL have been based on electrostatic aperture column (ESAC) designs, a six-month study at LBL and LLNL from March to September 1992 has led to the choice of the electrostatic quadrupole (ESQ) injector as the most suitable for the long term need of induction linac-based heavy ion fusion research work. The ESQ is a concept which uses a set of electrostatic quadrupoles to simultaneously focus and accelerate an ion beam. The front end of the ESQ is an axisymmetric diode containing a large source (of up to 7" in diameter according to present designs). The concept originated with Abramyan [1] and has been studied extensively by the Magnetic Fusion Energy group at LBL for a number of years [2]. As a high energy, high current injector, the ESQ concept has the distinct advantage of reduced voltage breakdown risks (as compared to ESAC), resulting from the intrinsically lower accelerating gradient and the presence of large transverse fields to sweep out deleterious secondary electrons.

## II. INJECTOR DESIGN

A schematic of the one-beam injector is shown in Figure 1. The key components of the injector are a 2 MV MARX generator, a large hot alumino-silicate source (of  $\leq 7"$

diameter), a diode column in which the ion beam is accelerated to  $\sim 1$  MV after extraction, and a number of electrostatic quadrupoles to bring the ion beam to 2 MV. Furthermore, external to the accelerating columns, protection devices (metal oxide varistors and guard rings) are built in to prevent irreversible damage in the case of major breakdowns.

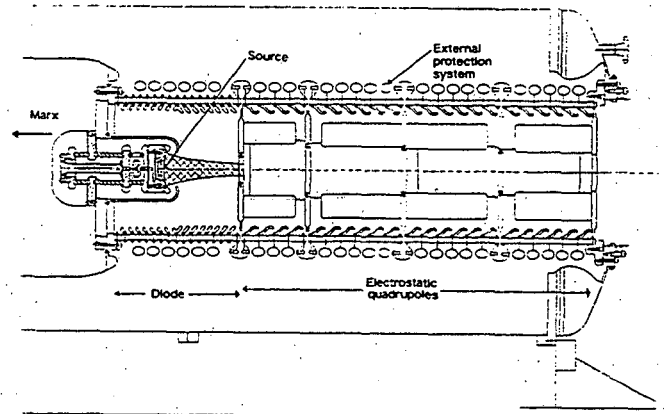


Fig. 1. Schematic of the one-beam injector.

The new MARX is a 36-stage pulse-forming network designed to produce a 2 MV pulse with 1  $\mu s$  rise and 5  $\mu s$  voltage flat top. This flat top can maintain constant voltage for the 1 - 2  $\mu s$  long ion pulse during its transit through the length of the injector ( $\sim 2 \mu s$  transit time). To minimize beam-induced transients, the electrical system as designed is quite stiff. The total resistance is 5 k $\Omega$ .

Source development is reported in a separate paper in this conference [3]. Tests with a small 1" hot alumino-silicate source over the past year has produced very encouraging results. The measured current density of 20 mA/cm<sup>2</sup>, the temperature and emission uniformity, as well as life time have been shown to exceed ILSE requirements under normal operating conditions. A 4" source and a 6" source have been fabricated and initial tests have yielded similar emission characteristics.

The key design constraint for an ESQ injector arises from a distortion of the particle phase space which may lead to an unacceptable increase in beam emittance. This effect arises from a large spread in particle energy with varying radial position when a low energy beam traverses a strong electrostatic quadrupole structure. The phase space distortion resulting from this "energy effect" is further enhanced by the higher order multipole fields intrinsic in an interdigital electrostatic quadrupole structure. Earlier designs with a low energy diode (500 keV) show unacceptable growth in

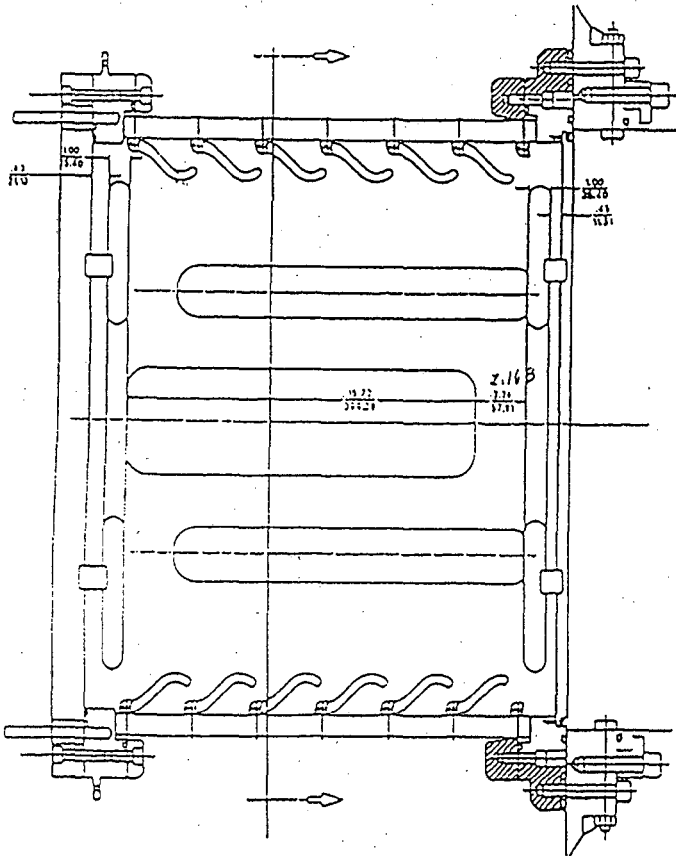
\* Work supported by the Director, Office of Energy Research, Office of Fusion Energy, U.S. Department of Energy under Contract No. DE-AC03-76SF00098.

emittance. 3D simulations of these effects have been confirmed quantitatively in a scaled experiment [4].

Three design paths have been identified for the reduction of these deleterious beam dynamics effects. First of all, if the diode energy is increased to 1 MV, the emittance growth through an ESQ is shown to be significantly reduced. Secondly, increased quad voltages lead to a reduced beam envelope with corresponding reduction of nonlinear effects. Thirdly, simulations have shown that the distortions are entirely attributable to fourth order single particle effects. Hence, external correction schemes are straightforward in principle, although the actual implementation may be somewhat involved.

The most cost-effective way to design a ESQ with acceptable emittance is to increase diode energy as well as quad voltage. Both of these measures would enhance breakdown risks. Hence, the choice of the optimal ESQ parameters involves a proper balance between breakdown risks and emittance growth.

To determine the quad breakdown voltage for our ESQ designs, we constructed a full-size quad unit with electrodes as well as X-ray shields, and tested the voltage holding capabilities in the absence of beam (Figure 2). The pulsed voltage from an existing MARX generator has a 30  $\mu$ s rise, and  $\sim 10 \mu$ s flat-top (Figure 3). For two electrode to end-plate gap spacings of 5.5 cm and 7.6 cm, the breakdown voltages were determined to be 550 kV and 700 kV, respectively. On the basis of these data, we have designed our ESQ quads for voltages of up to 350 kV (7 cm gap spacing).



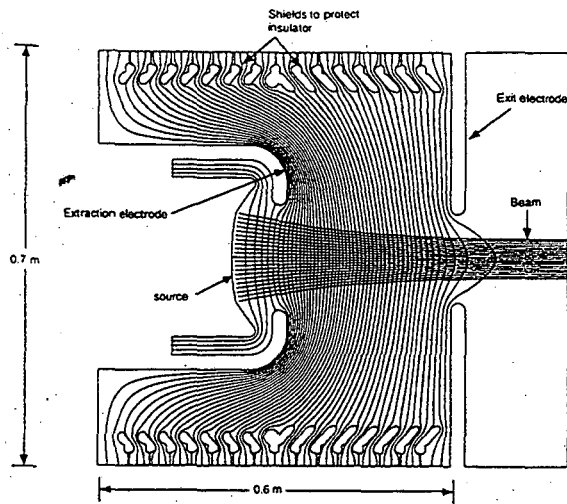


Figure 5. EGUN output showing the geometry of the axisymmetric injector diode, the beam envelope, and field equipotential surfaces.

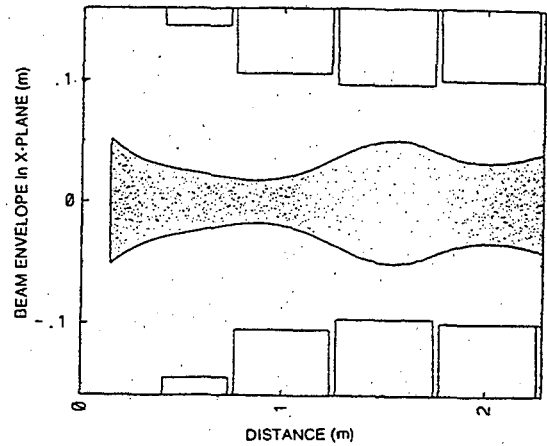


Figure 6. WARP3D calculations of the beam envelopes in the injector.

The ESQ section consists of 4 quadrupoles with representative parameters given in Table 1. The beam envelopes as calculated by the 3-D particle-in-cell code WARP3D are shown in Figure 6. The normalized emittance at the exit is predicted to be less than  $0.7\pi$  mm-mrad.

	Unit 1	Unit 2	Unit 3	Unit 4
Length, cm	30	46	46	46
Quad aperture radius, cm	12	10.5	10.5	10.5
Quad voltage, kV	206	259	308	281

Table 1. Parameters of the 4 quadrupole units in the ESQ section.

### III. REFERENCES

- [1] E.A. Abramyan and V.A. Gaponov, *Atomnaya Energiya* 20, 385 (1966).
- [2] O.A. Anderson et al., *Proceedings of the 1989 Particle Accelerator Conference, Chicago, March 20-23, 1989.*
- [3] S. Eylon et al., *Proceedings of the 1993 Particle Accelerator Conference, Washington, DC, May 17-20, 1993.*
- [4] E. Henestroza et al., *Proceedings of the 1993 Particle Accelerator Conference, Washington, DC, May 17-20, 1993.*

LAWRENCE BERKELEY LABORATORY  
UNIVERSITY OF CALIFORNIA  
TECHNICAL INFORMATION DEPARTMENT  
BERKELEY, CALIFORNIA 94720

