

UC San Diego

UC San Diego Previously Published Works

Title

Do Words Matter? Detecting Social Isolation and Loneliness in Older Adults Using Natural Language Processing

Permalink

<https://escholarship.org/uc/item/0259d809>

Authors

Badal, Varsha D
Nebeker, Camille
Shinkawa, Kaoru
et al.

Publication Date

2021

DOI

10.3389/fpsy.2021.728732

Peer reviewed



Do Words Matter? Detecting Social Isolation and Loneliness in Older Adults Using Natural Language Processing

Varsha D. Badal^{1,2}, Camille Nebeker³, Kaoru Shinkawa⁴, Yasunori Yamada⁴, Kelly E. Rentscher⁵, Ho-Cheol Kim⁶ and Ellen E. Lee^{1,2,7*}

¹ Department of Psychiatry, University of California San Diego, La Jolla, CA, United States, ² Sam and Rose Stein Institute for Research on Aging, University of California San Diego, La Jolla, CA, United States, ³ Herbert Wertheim School of Public Health and Longevity Science, University of California San Diego, La Jolla, CA, United States, ⁴ Digital Health, IBM Research-Tokyo, Tokyo, Japan, ⁵ Cousins Center for Psychoneuroimmunology, Semel Institute for Neuroscience and Human Behavior, University of California, Los Angeles, Los Angeles, CA, United States, ⁶ AI and Cognitive Software, IBM Research-Almaden, San Jose, CA, United States, ⁷ VA San Diego Healthcare System, La Jolla, CA, United States

OPEN ACCESS

Edited by:

Ruth Asch,
Yale University, United States

Reviewed by:

Sylvester Orimaye,
East Tennessee State University,
United States
Migita Michael D'Cruz,
National Institute of Mental Health and
Neurosciences (NIMHANS), India
André Carlos Ponce De Leon Ferreira
De Carvalho,
University of São Paulo, Brazil
Lars Meyer,
Max-Planck-Gesellschaft
(MPG), Germany

*Correspondence:

Ellen E. Lee
eel013@health.ucsd.edu

Specialty section:

This article was submitted to
Aging Psychiatry,
a section of the journal
Frontiers in Psychiatry

Received: 22 June 2021

Accepted: 08 October 2021

Published: 16 November 2021

Citation:

Badal VD, Nebeker C, Shinkawa K,
Yamada Y, Rentscher KE, Kim H-C
and Lee EE (2021) Do Words Matter?
Detecting Social Isolation and
Loneliness in Older Adults Using
Natural Language Processing.
Front. Psychiatry 12:728732.
doi: 10.3389/fpsy.2021.728732

Introduction: Social isolation and loneliness (SI/L) are growing problems with serious health implications for older adults, especially in light of the COVID-19 pandemic. We examined transcripts from semi-structured interviews with 97 older adults (mean age 83 years) to identify linguistic features of SI/L.

Methods: Natural Language Processing (NLP) methods were used to identify relevant interview segments (responses to specific questions), extract the type and number of social contacts and linguistic features such as sentiment, parts-of-speech, and syntactic complexity. We examined: (1) associations of NLP-derived assessments of social relationships and linguistic features with validated self-report assessments of social support and loneliness; and (2) important linguistic features for detecting individuals with higher level of SI/L by using machine learning (ML) models.

Results: NLP-derived assessments of social relationships were associated with self-reported assessments of social support and loneliness, though these associations were stronger in women than in men. Usage of first-person plural pronouns was negatively associated with loneliness in women and positively associated with emotional support in men. ML analysis using leave-one-out methodology showed good performance (F1 = 0.73, AUC = 0.75, specificity = 0.76, and sensitivity = 0.69) of the binary classification models in detecting individuals with higher level of SI/L. Comparable performance were also observed when classifying social and emotional support measures. Using ML models, we identified several linguistic features (including use of first-person plural pronouns, sentiment, sentence complexity, and sentence similarity) that most strongly predicted scores on scales for loneliness and social support.

Discussion: Linguistic data can provide unique insights into SI/L among older adults beyond scale-based assessments, though there are consistent gender differences. Future research studies that incorporate diverse linguistic features as well as other

behavioral data-streams may be better able to capture the complexity of social functioning in older adults and identification of target subpopulations for future interventions. Given the novelty, use of NLP should include prospective consideration of bias, fairness, accountability, and related ethical and social implications.

Keywords: artificial intelligence, social connectedness, gender, loneliness, NLP, Social support, linguistic features

INTRODUCTION

“No man is an island entire of itself; every man is a piece of the continent, a part of the main. . .”—John Donne.

Rates of social isolation and loneliness (SI/L) have increased over the past few decades among older adults, impacting both mental and physical health (1, 2). SI/L is associated with increased alcohol and drug abuse (3), cognitive decline (4), development of depressive and anxiety symptoms (5, 6), poor physical functioning (7–9), as well as increased mortality (10, 11). Furthermore, the adoption of physical distancing guidelines during the COVID-19 pandemic has further isolated seniors from relationships and meaningful activities, impacting health and well-being (12).

While current studies rely on self-report measures of social interactions and subjective experiences to assess SI/L, these approaches may not fully capture the nature or quality of the social connections. Our previous work has used Natural Language Processing (NLP) approaches to identify subtle speech-based linguistic features that reflect loneliness in older adults. We found strong gender differences in the acknowledgment of loneliness and expressed sentiment among older adults (13). These findings provided foundational support that unstructured text data can provide unique insights into internal subjective experiences, including for the detection and understanding of SI/L. Building upon our previous work, the current study examined how older men and women describe relationships and social supports during a semi-structured interview. This NLP analysis was applied to interview segments that focused on social relationships (where loneliness was not specifically mentioned), successful aging, and technology.

We hypothesize that linguistic features may be reflective of SI/L due to the social nature of language, which often reflects how an individual relates to others. Linguistic data may provide a novel data source for understanding and assessing SI/L and may be particularly useful to social media companies, as such data is widely accessible unlike clinical and psychological measures including depression. For example, an individual who is lonely may have higher usage of first-person singular pronouns (“I”) than that of first-person plural pronouns (“we”). This may reflect a lack of social contacts, close family members, or significant others, as well as signal a lack of closeness or commonality with social contacts. Similarly, an individual who is lonely may feel distressed over a lack of social relationships and would use more negative language to describe them to an interviewer. In addition to pronoun usage, we also explored use of other parts-of-speech and syntactic complexity in relationship to SI/L. While few NLP studies have explored this previously, there

have been links between socioeconomic status and education with loneliness—which could be indirectly reflected by syntactic complexity (longer and more complex sentence structures) or diversity of language used.

In this proof-of-concept study, we explored the interplay of gender and SI/L on transcribed speech data, using validated self-report scales for SI/L and NLP techniques, to provide a qualitative assessment of relationships. We examined the association between a scale-based measure of social support with the number and type of described relationships. We also examined how textual features, in particular pronoun usage, reflected self-report ratings of SI/L. Last we created machine learning (ML) models to predict SI/L based on sociodemographic and linguistic -based features, comparing the top-ranking features for different aspects of social support and loneliness.

RESEARCH DESIGN AND METHODS

Participants and Procedures

For this study, we utilized data collected *via* interviews with residents living independently at a continuing care senior housing community (CCSHC) in southern California. Cohort characteristics and study procedures have been previously published (14, 15). The study was approved by the University of California San Diego Human Research Protections Program (HRPP). Study inclusion criteria were: (1) English speaking individuals 65+ years old, (2) Ability to complete study assessments and engage in a qualitative interview, and (3) No known diagnosis of dementia or any other disabling illness.

Sociodemographic and Clinical Measures

Sociodemographic data including age, gender, racial background, years of education and marital status were collected along with scales to measure depression (Patient Health Questionnaire, 9-item) (16) and anxiety (Brief Symptom Inventory—Anxiety subscale).

Measures of Social Functioning

Social support was assessed using scales from the MacArthur Studies of Successful Aging that included measures of Emotional Support (6-item scale, including “How often does your spouse make you feel loved and cared for?”), Instrumental Support (6-item scale, including “How often does your spouse help with daily tasks like shopping, giving you a ride, or helping with household tasks?”) and Negative aspects of Social Relationships (6-item scale, including “How often does your spouse make too many demands on you?”) (17).

Loneliness was assessed with the UCLA Loneliness scale (Version 3) or UCLA-3, a validated and commonly used research instrument. The UCLA-3 has high internal consistency, validity, and test-retest reliability (18). Unlike single-item assessments of loneliness, the UCLA-3 does not explicitly use the word “lonely.” The 20 items inquire about specific experiences, e.g., “How often do you feel in tune with others around you?” using a 4-point Likert scale (1 = “I never feel this way” to 4 = “I often feel this way”). The cut-offs for loneliness severity on the UCLA-3 scale were adapted from Doryab et al. (19), such that total scores ≤ 40 are categorized as not lonely and total scores >40 are categorized as lonely. Q2 (What makes those meaningful to you?) was included in extraction of linguistic features. However, due to the open-ended scope of the question and lack of concrete or objective information for further analyses, we only included linguistic features from those responses. Some of the commonly used social scales are henceforth referred to using acronyms: ESS-E, Emotional Support Scale—Emotional Support score; ESS-I, Emotional Support Scale—Instrumental Support; ESS-NI, Emotional Support Scale—Negative Interaction Score; SSI, Social Support Index.

Qualitative Interviews

In addition to the aforementioned data collection, semi-structured interviews were conducted with participants covering a variety of topics (loneliness, relationships, and wisdom). Interviews were conducted by research staff trained in qualitative methods (Patton 2002) and occurred between April 2018 and August 2019. The interview protocol included six questions on the topic of relationships: (Q1) “So, this first section is about family, friendships and relationships. Do you have important relationships in your life? Please describe them.” (Q2) “What makes those relationships meaningful to you?” (Q3) “Do you feel that there are people in your life who fully understand you?” (Q4) “How often do you spend time with or connect (*via* phone, email, or social media) with others?” (Q5) “Do you feel you are part of a larger community? Please explain.” (Q6) “When you are feeling disconnected or isolated what do you do?” Each interview was audio-taped and subsequently transcribed by a commercial company (MModal). The interviews were manually transcribed verbatim and distinguished between the interviewer and interviewee. The same interviewer conducted all the interviews. This study focused upon Q1 responses to extract the number of important relationships, Q3 responses to extract the number of relationships in which one felt understood, and Q4 responses to extract frequency and mode of communication. The relationship section of the interview was used to extract linguistic features since these questions were consistent between the self-reported lonely and not-lonely, whereas for pronoun usage, we used the entire interview text in addition to the relationship section, given that focusing the conversation upon relationships could bias the pronoun usage (e.g., increased use overall of pronouns to describe their social network).

Analytic Procedures

NLP techniques allow us to isolate relevant pieces of information within a response and suitably encode the information into

numerical values or “features.” Some of these features are derived from the entire transcript, while others are derived from responses to specific questions or an entire thematic section. Many of these features are present in varying strengths, commonly referred to as “impurity” levels in NLP analysis, among classes based on user-defined criteria (e.g., gender, loneliness levels). This impurity of features (probability of incorrectly classifying) is exploited by ML techniques to discriminate among the classes even if the impurity is not significant, or the association is non-linear, or if several features must be composed together for the ML analyses. The following subsections discuss the steps involved and implementation details.

Text Processing to Localize Responses

Term Frequency—Inverse Document Frequency (TF-IDF) techniques (20, 21) were used to identify specific questions and subsequent responses. These TF-IDF techniques are commonly used in document retrieval and data mining approaches (22). Briefly, within this method, the transcript of the interview is akin to a “corpus,” the entirety of text to be searched. Each question in the actual interview is analogous to a “document,” which must be matched (and its location retrieved) to a template question of interest, or a “query.”

Matching the query with the document uses vector algebra. First, the corpus (or collection of documents) is converted into vectors to capture the frequency (TF component) and the uniqueness (IDF component) of words (henceforth referred to as “terms”). Next, the queries are also vectorized. Finally, the query vectors can be matched with document vectors (using cosine-similarity) to identify best matches. The procedure is repeated for each transcript.

The transcribed interviews identified the interviewer’s utterances with a new line preceded by the character “Q,” while the interviewee’s answers were preceded by the character “A.” TF-IDF implementation queries were used with the actual questions in the transcripts. The TF-IDF approaches allowed text to be identified within each transcript that best matched the template query. After identifying the location of the question, we extracted the subsequent response (several lines following the “A” in the transcribed interview text).

Text Processing to Extract Information Linguistic Features

Linguistic features include frequency and ratio of parts of speech, vocabulary richness (Brunet’s index, Honore’s statistic, type token ratio), filled pauses (dysfluency in speech), syntactic complexity (complex and compound phrase structure within a sentence), sentence similarity (similarity between all pairs of sentences), and sentiment (23). For sentiment analysis, we used VADER (Valence Aware Dictionary for Sentiment Reasoning) a highly regarded and freely available tool. VADER is sensitive to polarity (positive/negative) as well as the strength of conveyed emotions. VADER is based on a dictionary which maps words into sentiment values (covering the positive to negative range), and also rates text based on capitalization and punctuation. VADER is ranked as one of the best in a 2016 benchmark study

of commonly used sentiment analyzers (24). Once the location of relevant text in the transcripts was identified, a variety of techniques were used to quantify the represented information. As previously mentioned, all linguistic features, aside from pronoun usage, were extracted from only the relationship section of the interview. Specific details on these features are available in the **Supplementary Appendix A**.

Pronoun Usage-Based Features

We computed the density of first-person singular (I, me, my, and mine), first-person plural (we, our, us, and ours) and the third-person plural (he, she, they, them, and their) pronouns, but excluded the second-person pronouns (you, your, and yours) because they were primarily used to address the interviewer in the transcripts. Although these features are also linguistic in nature, they are mentioned in a separate category due to the nuanced semantics conveyed about relationships with others. Due to the focus on relationships with others in the relationship section, the section had higher pronoun usage and effect sizes were small to very small (<0.20). We used the transcript from the entire interview for pronoun-related analyses, which provided higher discrimination.

Relationship Word-Based Features

A dictionary of words was manually created to identify relationships mentioned by participants in their responses. These relationship words were further mapped into categories, e.g., “husband” and “wife” were categorized into “spouse.” **Supplementary Table 1** outlines the mapping between relationship words and assigned categories. We also created a dictionary of predefined phrases that are often used in American English to identify modes and frequency of communication. To assess communication frequency, the phrases were mapped to approximate frequency as shown in **Supplementary Table 2**.

ML Classification

Socio-demographic features (education, age, race, marital status, etc.), linguistic features, and all pronoun density features ($N = 97$) were used to classify participants into objective categories for loneliness (UCLA-3 severity, cutoff score of 40) and social support (median cutoff) using Artificial neural network (ANN) with 200 internal units in Orange version 3.27.1, scikit-learn version 0.24.2. (25) was used. Various ML models such as Artificial neural network (ANN) with activation functions (Logistic, ReLu, and tanh), support vector machine (SVM), k-nearest neighbors (kNN), Tree and random forest were used (25). **Figure 1** depicts the overall procedure along with features and sources used for our processing. Performances of binary-classification models were evaluated by using F1 score and the area under receiver operating characteristic curve (AUC) with leave-one-subject-out cross validation.

Feature Ranking

Classifiers usually benefit from a large feature set, however, as the size of the feature set grows, at some point, error rates begin to increase (26). This phenomenon becomes even more relevant as the size of the feature set becomes comparable to the sample

size, as in our case. There is a strong possibility of overfitting, and many features may be a source of noise. The approach usually (27, 28) is to rank features and then use top features incrementally to find the best performing set. This usually results in improved performance.

To determine the top-ranking NLP features that contribute to SI/L, we assessed how differently the feature is distributed across classes (previously referred to as impurity). GINI is a popular impurity-based feature ranking technique (29) that states the probability that the feature is wrongly classified ($0 =$ “pure,” $0.5 =$ equal distribution across all classes, $1 =$ random distribution across classes) (29, 30). GINI was used to rank the features that were most strongly associated with the SI/L classification.

A Caveat on Anaphora and Overestimation

Using NLP to extract information about relationships from unstructured text has a few notable challenges. For example, a response may mention “I have children. A son and a daughter.” Such responses require establishing correspondences between nouns (and pronouns), possibly separated by long spans of text. Anaphoric resolution (establishing correspondence among nouns and pronouns that refer to the same entity within and across sentences) is difficult, hence we acknowledge the possibility of overestimation in this process (31, 32). Our analysis relies upon counting words from our dictionary of relationship terms. Thus, our NLP-guided count of relationships may overestimate the intended number of relationships in the response due to possible anaphoric references.

RESULTS

Of the 101 interviews, 97 participants also completed other baseline assessments and were included in the analyses for this study.

Description of the Study Sample

Participants ranged between 66 and 94 years of age (**Table 1**). Men were older (Mean age = 86.2 vs. 81.7 years for women, Cohen’s $d = -0.68$) and had more years of education (Cohen’s $d = -0.40$) than women. Racial background, marital status, mean UCLA-3 scores, instrumental support, negative interactions, anxiety, and depression scores were similar by gender.

Comparison of Self-Report and NLP-Based Measures of Social Support

The location of responses corresponding to Q1 and Q3 in the transcripts were identified correctly for all 97 interviewees, and more than 97% of responses were captured for the analyses. **Figures 2A,B** show the relationship type and distribution of important relationship terms by gender, in response to Q1. The identified relations were mapped into relationship categories. Children were most commonly reported as important relationships (63.5% women, average 1.5 mentions per interviewee for women overall, 52.9% men averaged 1.76 mentions per interviewee overall for men), followed by siblings and spouses. **Figures 2C,D** show, by gender, the relationship type and distribution of relationships in which the participant

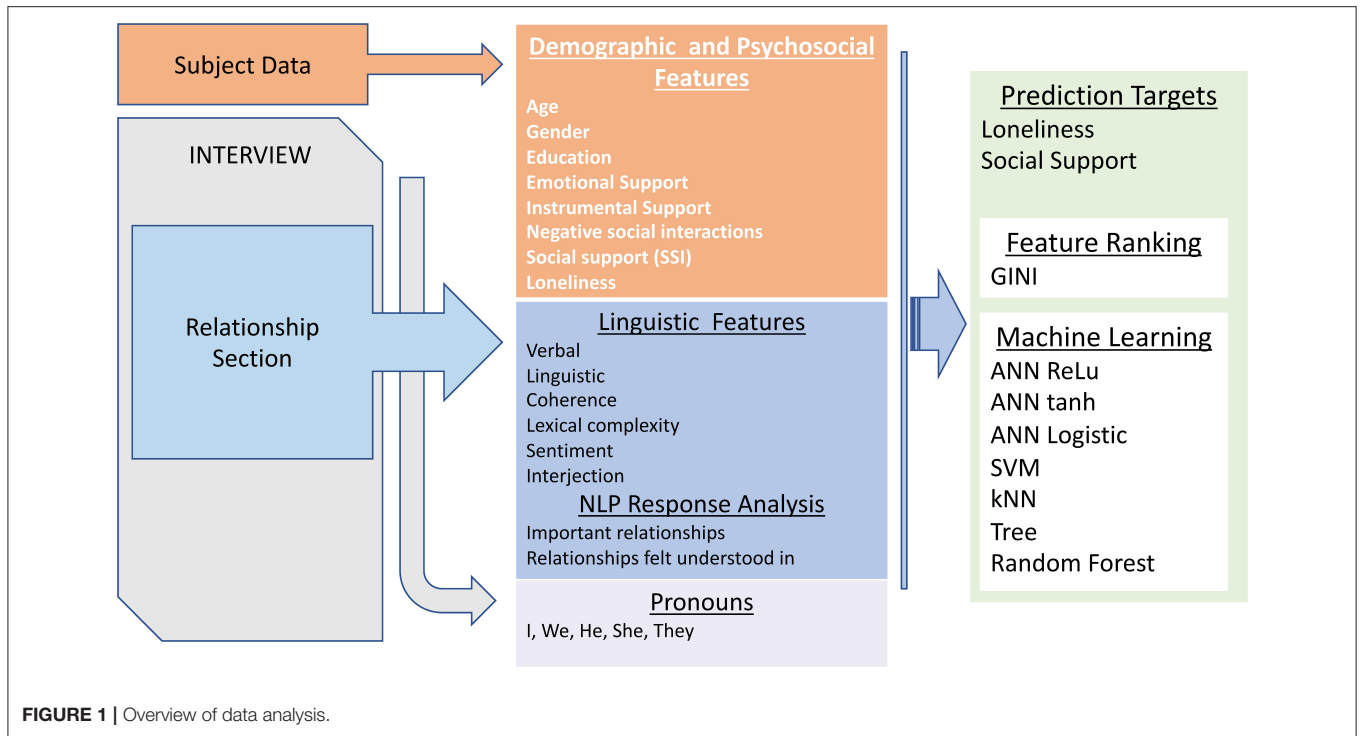


FIGURE 1 | Overview of data analysis.

TABLE 1 | Demographics information.

| | Women | | | | Men | | | | t or χ^2 | df | p | Cohen's d |
|---------------------------------------|-------|------|--------|------|-----|------|--------|-------|---------------|----|--------|-----------|
| | N* | MEAN | MEDIAN | SD | N* | MEAN | MEDIAN | SD | | | | |
| Age at visit (years) | 63 | 81.7 | 81.5 | 6.94 | 34 | 86.2 | 86.5 | 5.90 | -3.36 | 96 | <0.001 | -0.68 |
| Education (years) | 63 | 15.4 | 16.0 | 2.42 | 34 | 16.4 | 16.0 | 2.23 | -1.95 | 96 | 0.06 | -0.40 |
| Race (% Caucasian) | 63 | 90.5 | | | 34 | 94.1 | | | 0.06 | 1 | 0.81 | |
| Marital Status (% not single) | 63 | 34.9 | | | 34 | 52.9 | | | 2.26 | 1 | 0.13 | |
| Loneliness (UCLA-3 score) | 54 | 36.2 | 35.0 | 9.35 | 30 | 39.3 | 38.5 | 11.54 | -1.24 | 83 | 0.22 | -0.30 |
| Emotional support (ESS-E) | 60 | 2.8 | 3.0 | 0.41 | 33 | 2.6 | 2.5 | 0.47 | 1.97 | 92 | 0.05 | 0.44 |
| Instrumental support (ESS-I) | 60 | 2.0 | 2.0 | 0.85 | 33 | 1.9 | 2.0 | 0.79 | 0.59 | 92 | 0.55 | 0.13 |
| Negative social interactions (ESS-NI) | 60 | 0.7 | 0.5 | 0.72 | 33 | 0.8 | 0.5 | 0.65 | -0.98 | 92 | 0.33 | -0.21 |
| Social support (SSI) | 53 | 52.0 | 52.0 | 7.41 | 31 | 49.6 | 50.0 | 7.24 | 1.41 | 83 | 0.16 | 0.32 |
| PHQ-9 | 57 | 2.7 | 2.0 | 3.55 | 31 | 3.5 | 2.0 | 3.89 | -0.91 | 87 | 0.37 | -0.21 |

*N refers to number of available observations at baseline. Some information was incomplete (unavailable).

ESS-E, Emotional Support Scale—Emotional Support score; ESS-I, Emotional Support Scale—Instrumental Support; ESS-NI, Emotional Support Scale—Negative Interaction Score; PHQ-9, Patient Health Questionnaire 9-item; SSI, Social Support Index; UCLA-3, UCLA Loneliness Scale (Version 3).

feels understood. In terms of feeling understood, participants most commonly noted children, spouses, and parents. Women and men reported similar numbers of important relationships (Mann-Whitney $U = 993.0, p = 0.18$, Cohen's $d = -0.084$) and relationships in which they felt understood (Mann-Whitney $U = 989.5, p = 0.26$, Cohen's $d = -0.085$). A sizable fraction of men (35.2%) and women (46.0%) reported they were not understood by anyone.

Women communicated with their social network more frequently than men based upon key phrases in response to Q4 mapped to frequency (23.5 times a month vs. 8.0 times

a month, Mann-Whitney $U = 131.5, p < 0.001$, Cohen's $d = 0.76$; **Figure 3A**). The most frequently mentioned mode of communication was phone ($N = 26$), followed by email ($N = 22$), and social media ($N = 17$), which included Facebook and Instagram (**Figure 3B**).

Emotional and instrumental support were associated with the NLP-derived assessments of relationships. The number of important relationships was correlated with greater emotional support in women, but not men (Spearman's $\rho = 0.28, p = 0.03$ and Spearman's $\rho = -0.06, p = 0.73$, respectively). Furthermore, the number of important relationships was negatively correlated

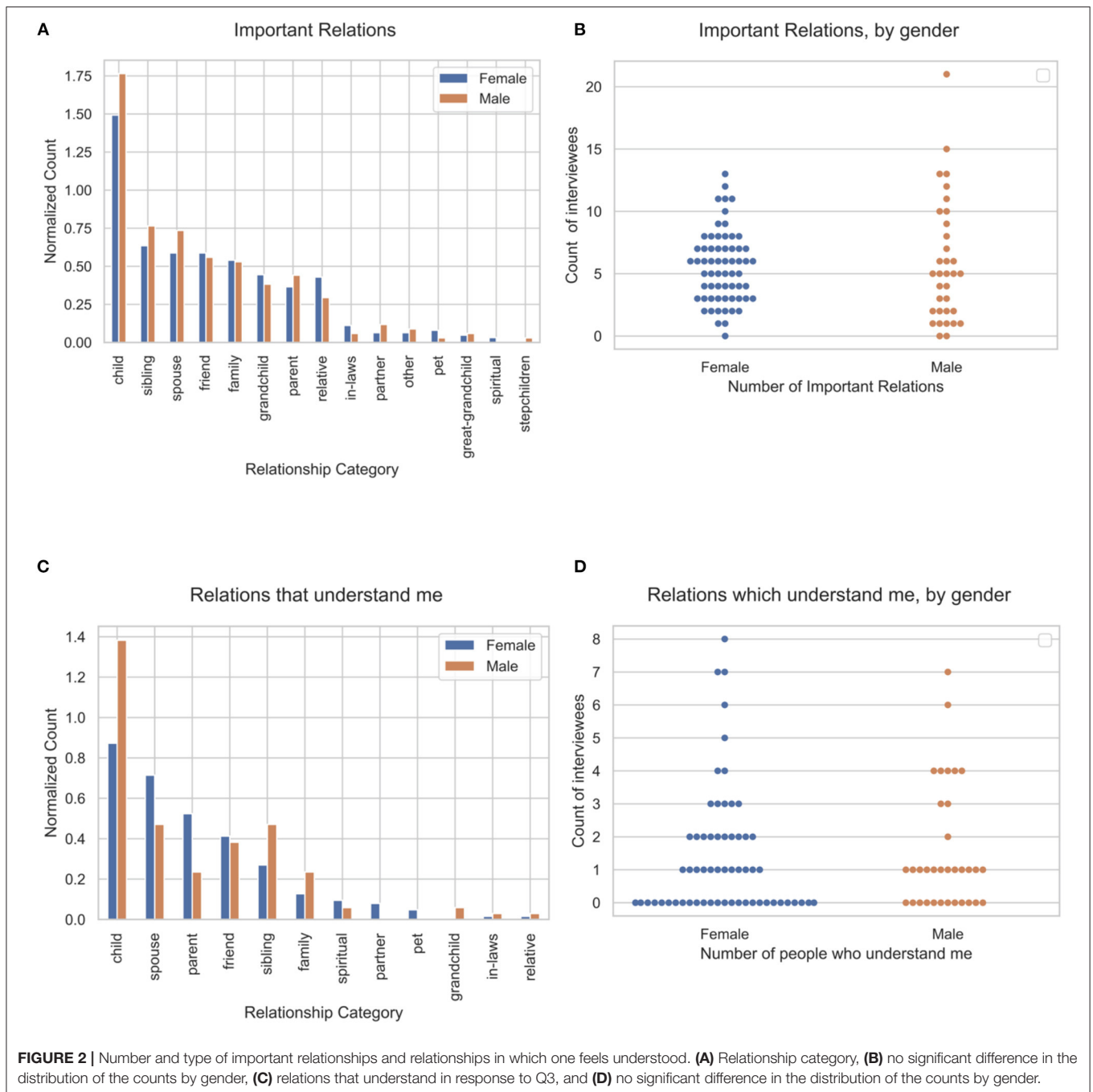


FIGURE 2 | Number and type of important relationships and relationships in which one feels understood. **(A)** Relationship category, **(B)** no significant difference in the distribution of the counts by gender, **(C)** relations that understand in response to Q3, and **(D)** no significant difference in the distribution of the counts by gender.

with negative social interactions in women, but not in men (Spearman’s $\rho = -0.34, p = 0.009$ and Spearman’s $\rho = 0.11, p = 0.55$, respectively). The numbers of important relationships were not significantly correlated with UCLA-3 loneliness scale scores (Spearman’s $\rho = -0.15, p = 0.16$) in either gender.

Text Features Related to SI/L: Pronoun Usage

The density of types of pronouns, computed as a ratio of their occurrence counts divided by total number of words uncovered

several interesting associations. First-person plural pronoun usage negatively correlated with loneliness in women ($\rho = -0.31, p = 0.025$). Emotional support in women was directly related to third-person pronoun density (Spearman’s $\rho = 0.30, p = 0.008$).

Binary Classification Models and GINI Based Feature Ranking

The ANN using Logistic activation function outperformed the others (F1 = 0.73, AUC = 0.75, specificity = 0.76, and sensitivity = 0.69) in predicting loneliness. This approach also performed

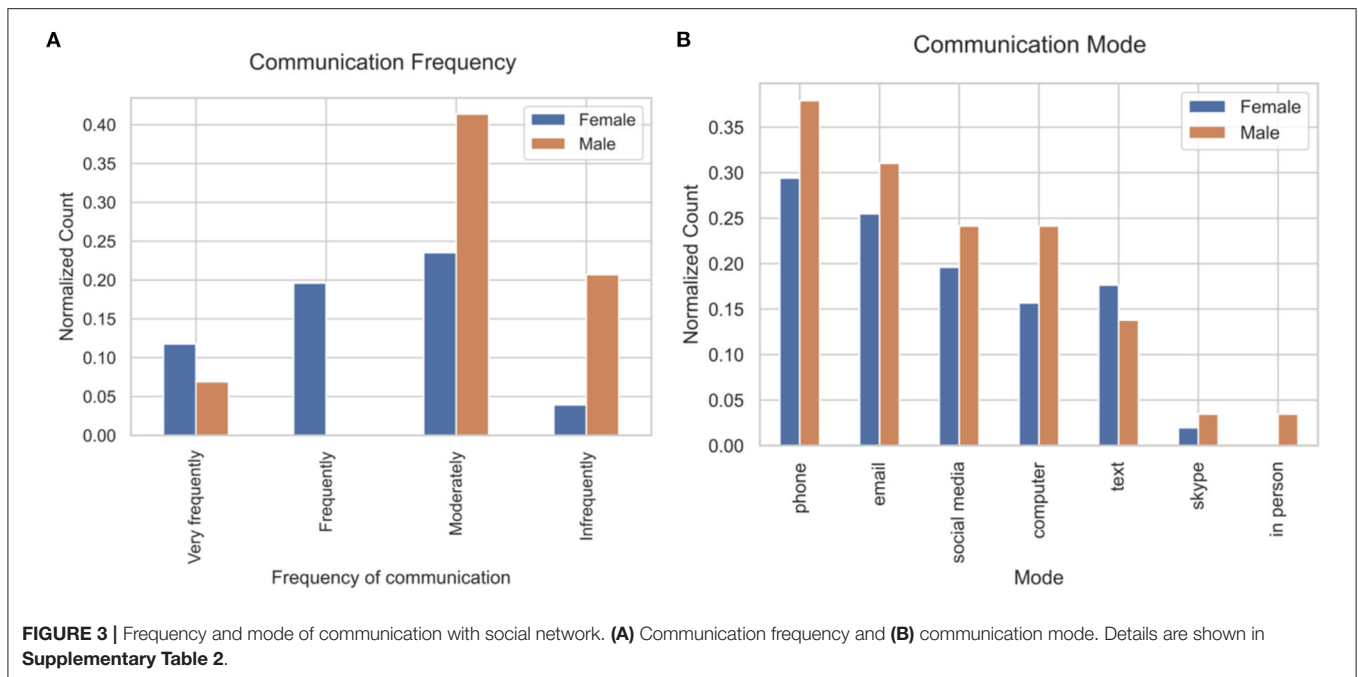


TABLE 2 | Binary-classification performance with loneliness (Leave one out)[§].

| Models | Hyper parameters | AUC | F1 Score | Confusion matrix | | | |
|---------------|--|------|----------|------------------|----|----|----|
| | | | | TP | FP | TN | FN |
| ANN Logistic | Scipy implementation, Number of hidden layers = 1, Number of neurons in hidden layer = 200, solver = Adam | 0.75 | 0.73 | 24 | 12 | 37 | 11 |
| SVM | Cost (C) = 1.00, Numerical Tolerance = 0.001, Epsilon = 0.10, g = auto, kernel = RBF | 0.74 | 0.73 | 23 | 11 | 38 | 12 |
| ANN tanh | Scipy implementation, Number of hidden layers = 1, Number of neurons in hidden layer = 200, solver = Adam | 0.67 | 0.65 | 20 | 14 | 35 | 15 |
| ANN ReLu | Scipy implementation, Number of hidden layers = 1, Number of neurons in hidden layer = 100, solver = Adam | 0.70 | 0.64 | 21 | 16 | 33 | 14 |
| Tree | Max depth = 100, Min number of instance in leaves = 1 | 0.59 | 0.57 | 19 | 20 | 29 | 16 |
| Random Forest | Number of Trees = 8, Number of attributes for split = 4, Limit depth = 7, Don't split subsets smaller than 2 | 0.57 | 0.55 | 12 | 14 | 35 | 23 |
| kNN | Number of neighbors k = 9, Metric = Chebyshev, weight = distance | 0.54 | 0.54 | 16 | 20 | 29 | 19 |

^{*}Features comprising socio-demographic features, language features, and pronoun features. [§]top 10 features.

ANN, artificial neural network; SVM, support vector machine; kNN, k-nearest neighbors algorithm; TP, true positive; FP, false positive; TN, true negative; FN, false negative.

similar to our previous approach for quantitative loneliness (13). Performance for ML for various measures such as loneliness and social support are shown in **Tables 2, 3**. Social support classification using ML showed acceptable performance (ESSES: F1 score = 0.67, AUC = 0.72; ESSIS: F1 score = 0.66, AUC = 0.71; ESSNS: F1 score = 0.67, AUC = 0.62) for median split.

We used GINI to rank features for the classification task, the top 10 features results are shown in **Table 4**. Description of specific features is categorized and grouped in **Supplementary Table 3**. Several of the top-ranked features were consistently related to loneliness and social support. Lower usage of first-person plural pronouns was linked to higher loneliness, while higher usage of pronouns in general was associated with better emotional and instrumental support, as well as with fewer negative social interactions. Similarly, greater sentence similarity was associated with lower instrumental support while lower sentence complexity was associated with higher loneliness and lower emotional support. Shorter response length in the

relationship section was associated with higher loneliness, while shorter responses throughout the interview were associated with lower emotional and instrumental support. Higher education levels were linked to greater loneliness. Lower positive sentiment and higher negative sentiment were consistently linked to less emotional support, less instrumental support, and more negative social interactions.

Feature rankings suggest greater role of age than gender in SI/L, with relative information gains of 0.02 vs. 0.01.

DISCUSSION

Our study explored how text features were associated with SI/L in older community-dwelling adults. Older women's responses to questions about important relationships were more strongly correlated with their ratings on social support scales than older men's. Pronoun density was associated with loneliness and social support in both men and women and were consistently a

TABLE 3 | Binary-classification performance for social and emotional support at median and 75 percentile (Leave one out)*.

| Target | Cutoff | AUC | F1 Score | Top model | Number of features included* | Confusion matrix | | | |
|---|--------|------|----------|-----------|------------------------------|------------------|----|----|----|
| | | | | | | TP | FP | TN | FN |
| A: Binary-classification performance for social and emotional support at median (Leave one out)*. | | | | | | | | | |
| Emotional support | 3.0 | 0.72 | 0.67 | ANN ReLu | 60 | 44 | 18 | 19 | 12 |
| Instrumental support | 2.0 | 0.71 | 0.66 | ANN tanh | 20 | 42 | 18 | 20 | 13 |
| Negative social interactions | 0.5 | 0.62 | 0.67 | Tree | 30 | 51 | 17 | 12 | 13 |
| B: Binary-classification performance for social and emotional support at 75 percentiles (Leave one out)*. | | | | | | | | | |
| Emotional support | 3.0 | 0.72 | 0.67 | ANN ReLu | 60 | 44 | 18 | 19 | 12 |
| Instrumental support | 2.5 | 0.63 | 0.63 | ANN ReLu | 5 | 15 | 15 | 44 | 19 |
| Negative social interactions | 1.0 | 0.63 | 0.71 | SVM | 15 | 20 | 8 | 47 | 18 |

*Features comprising socio-demographic features, linguistic features, and pronoun features.

TP, true positive; FP, false positive; TN, true negative; FN, false negative.

TABLE 4 | Top GINI-ranked predictors in machine learning models for loneliness and social isolation*#.

| Loneliness | Emotional support | Instrumental support | Negative social interactions |
|---|--|--|--|
| First-person plural pronoun (We) (Density, entire transcript) -* | Response length (Word minimum response) + | Sentence similarity (frequency) - | Noun usage (frequency) - |
| Compound (positive and negative) sentiment (SD) -* | Positive sentiment (mean) +* | Pronoun usage (frequency) + | Negative sentiment (SD) + |
| Interjection (ratio) - | Pronoun usage (Ratio of pronoun to noun) +* | Negative sentiment (maximum) + | Negative sentiment (mean) +* |
| Sentence complexity (average yngve depth, Median) -* | Positive sentiment (median) +* | Response length (Total number words) + | Verb usage (frequency) - |
| Response length (Total words, mean) -* | Compound sentiment (median) - | Neutral sentiment (median) - | Sentence similarity (median) - |
| Sentence complexity (yngve depth, Total) -* | Sentiment neutral (median) -* | Sentence similarity - | Pronoun usage (frequency) - |
| Response length (Total characters, median) -* | Sentence complexity (Average yngve depth, median) + | Frequency of adjectives + | Ratio of nouns + |
| Education +* | Gender (female) +* | Response length (Total number characters) + | Filler frequency - |
| Total words (Relationship section) - | Pronoun usage (ratio) +* | Verb usage (frequency) + | Number of important relationships - |
| Adverb usage (frequency) -* | Compound sentiment (mean) + | Vocabulary Brunett index + | Positive sentiment (SD) + |

§Features comprising socio-demographic features, language features, and pronoun features. *Significant.

#Description of linguistic features is mentioned in **Supplementary Appendix A** and **Supplementary Table 3**.

+Associated with higher scores on loneliness, emotional support etc.

-Associated with lower scores on loneliness, emotional support, etc.

SD, standard deviation.

Color coding:

| | | | | | | | |
|-----------|--------------------|------------------|---------------------------------|------------|-------------------------------------|----------------------|---------------------|
| Pronouns, | Socio-demographic, | Response length, | Parts of speech (non-pronouns), | Sentiment, | Sentence complexity and similarity, | Vocabulary richness, | Relationship words. |
|-----------|--------------------|------------------|---------------------------------|------------|-------------------------------------|----------------------|---------------------|

top feature in models of loneliness and social support. Other top linguistic features included sentence similarity/complexity, response length, and sentiment.

The current finding that usage of first-person plural pronouns was linked to lower loneliness among the women and higher social support among men is consistent with previous research on first-person plural pronoun use as a linguistic indicator of interdependence that has been consistently associated with higher quality relationships and better physical and mental health functioning (33). Studies have also described the links between first-person plural pronoun usage and better perceived support, an expanded sense of self (34), and better conflict resolution in couples (35–38). First-person plural pronoun use also reflects social support within couples, exhibited in how dyads cope together with challenges such as a cancer diagnosis (39–42). Conversely, usage of first-person singular pronoun has been linked with depressive symptoms (43) and negative affective states, noting these associations to be stronger in women (44–46). Language may also influence mood states. Subjects who recalled a depressing incident from a self-distanced perspective (using fewer first-person pronouns) had less depressed affect for up to a week, compared to those who used a more self-immersive stance (47).

The current study illustrates how diverse sets of linguistic features can be used to predict SI/L with good accuracy. The linguistic models presented here (which included a broader variety of linguistic features and sociodemographic information) slightly outperformed our previous models (13), which were limited to NLU-based emotions, sentiment, and question stems from the structured interview template. The current models found that in addition to sentiment, sentence complexity and similarity, usage of pronouns and other parts of speech, and response length were top-ranked features in predicting SI/L. This suggests that a broader variety of linguistic features may outperform purely emotion and sentiment-based models, though more comprehensive models should also include auditory features (e.g., tone, response latency), semantic features (word usage), and longitudinal follow-up. A 2017 study by Mehl et al. (48) reported that lonely individuals used fewer propositions and less time spent talking with others. One study reported that linguistic features such as tentativeness and non-fluencies are associated with depression and anxiety symptoms (49), while another study of Twitter messages found that posts that used “lonely” or “alone” had consistent themes of anger, anxiety, difficulties in interpersonal relationships, substance use, unhealthy eating and sleep (50). One novel study of professional football players and their coaches found longitudinal decline in language complexity in the players (who were at high risk for head trauma) relative to their coaches (51). NLP approaches can capture the breadth of information conveyed through language, augmenting our ability to assess an individual’s internal emotional state and social functioning.

All participants were assessed on a wide range of socio-demographic and psychological factors including depression. Previously published studies have shown the overlapping prevalence of depression and loneliness, however due to the low prevalence of depression in this cohort (7.2% had a PHQ-9

score of 10 or greater, 2.1% had a PHQ-9 score of 15 or greater and 0.0% had 20 or greater) and due to a lack of depressive symptoms beyond the mild level of severity, we did not include depression as a confound. For the purposes of this study, only socio-demographic factors and linguistic features were used to predict loneliness and social support.

Our findings included a sizeable number of Facebook users in this age group; it is not very surprising given previous studies that have found older adults to be capable users of technology (52) and, increasingly, social media users—with Facebook use reaching 50% (53) even as younger adults ceased using the social media platform (54).

Several studies have attempted novel techniques to remedy the lack of interpretability of ML models (or their black-box nature). A recent review on the topic, which details the advantages and major drawbacks can be found here (55). Many of these methods have short histories, or, are not widely and openly accepted and/or understood. This is in contrast to ANN models, which are often not only powerful, but they also have a long history, are well and widely understood, studied, and are relatable by most in the field. Most professionals can find a common ground in ANN.

Study Limitations

Properties of speech (e.g., pitch, prosody, meaningless sounds, amplitude, and modulations) are meaningful features with clinically relevant implications, however, in the current study, we did not assess speech acoustics and relied solely upon the transcribed text.

Our study was cross-sectional and limited to a small sample of independent-living older adults and may not be representative of nor generalizable to the broader class of individuals in the same age group. Our statistical analysis showed a significant age difference between the two genders (Cohen’s $d = -0.68$, $p < 0.001$) which potentially confounds age and gender. Follow-up analyses examined the confounding effects of age and gender. Machine learning models exploit combining features in complex non-linear ways to predict the target variables; however, they are difficult to interpret. Linguistic features, by definition, are influenced by language proficiency. Thus, NLP features in non-native English speakers may manifest differently (56, 57). In the current study, we did not control for English proficiency. The models were derived from participants who are fluent in English and may not be applicable to other older adult populations. Pronoun usage may depend on variety of factors such as the number of siblings and size of family when growing up, the choice of profession, and involvement in leadership roles (58). The current study did not control for these factors. Mental health status and momentary emotional state of both, the interviewer and interviewee and their interpersonal dynamics, can influence the interview. Due to a large variety of factors that shape conversations, predictions using these approaches are difficult to perfect.

Character and personality play an important role in verbal expression and are worthy of independent investigation, however this is beyond the scope of the present study. Despite promising initial findings, commonly used sentiment analyzers may be susceptible to bias, due to highly variable assessments, large

breadth of applications, or specificity to a particular test case (24).

In this analysis, we have trimmed the least important features, stopping when performance of the model is reduced. While this method of selecting features based on information gain or impurity rank, may result in including features that could be inter-correlated, this does not adversely affect the performance or the results in contrast to traditional statistical methods. This method may not provide the minimal feature set, which is very difficult to identify (59), but roughly identified sets such as ours work well in practice.

For this project, we aimed to compare language usage differences between people with and without SI/L. Transformers, despite being very useful in certain cases that require extraction of meaning, have limited applicability in our study. First, they are intended to process text, not linguistic features. Second, transformers are uniquely equipped for tasks such as translation and summarizing as they are designed to retain meaningful concepts using attention (60). But this has an effect of deemphasizing less important details, which have less to do with the meaning but more to do with expression e.g., vocabulary richness, filler words, and pronouns. Third, recent studies have reported that Bidirectional Encoder Representations from Transformers (BERT—a well-known architecture that first introduced the idea of attention and was quickly embraced by the community) often cannot outperform some common classification and other simpler baselines (61–63). Crafting an appropriate transformer for the task may not be straightforward, and advantages may translate into just a few percentage points in performance.

Future Directions/Overall Conclusions

The application of NLP for the purpose of facilitating understanding of human health is exciting. The fact that myriad factors can influence conversations, more research is needed to refine the predictive accuracy of these models. NLP assessments of unstructured language may be integrated with self-report and behavioral assessments to provide nuanced and sensitive evaluations of SI/L. Moreover, the narrative data that forms the basis of the NLP training data must be evaluated to ensure that it is representative of people for whom the results may be applied. Given its novelty, those exploring NLP applications, including researchers and clinicians, should become knowledgeable about how to approach its use and consider issues of bias, fairness, accountability, and related ethical and social implications early and often during the study. While this study was limited to common architectures used in ML, newer attention-based models, such as transformers, may provide additional improvements.

REFERENCES

1. Jeste DV, Lee EE. Loneliness vs. wisdom amid two concurrent pandemics of loneliness. *Am J Geriatr Psychiatry*. (2020) 28:1245–7. doi: 10.1016/j.jagp.2020.08.017

Due to low rates of depression in this cohort, we were not able to assess language features that were reflective of depressive symptoms. However, future NLP studies of lonely cohorts with higher rates of depression should consider how the impact of depression on language, both independent of SI/L as well as through effects on social functioning.

DATA AVAILABILITY STATEMENT

The study/data is governed by University of California San Diego Human Research Protections Program (HRPP) rules and other contract. It is not publicly available due to privacy concerns, may include HIPAA regulations. For access, qualified researchers may contact the corresponding author.

ETHICS STATEMENT

The studies involving human participants were reviewed and approved by University of California San Diego Human Research Protections Program. The patients/participants provided their written informed consent to participate in this study.

AUTHOR CONTRIBUTIONS

VB and EL contributed to the conception and design of the study and had full access to all the data in the study and take responsibility for the integrity of the data and the accuracy of the data analysis. VB wrote the first draft of the manuscript and conducted the data analyses. VB, YY, and KS developed the NLP tools used in the analyses. EL, VB, CN, YY, KS, KR, and H-CK were involved in the data interpretation. VB, EL, and CN wrote sections of the manuscript and were involved in data interpretation. All authors contributed to manuscript revision, read, and approved the submitted version.

FUNDING

This study received funding from IBM. The funder was not involved in the study design, collection, analysis, interpretation of data, the writing of this article or the decision to submit it for publication.

SUPPLEMENTARY MATERIAL

The Supplementary Material for this article can be found online at: <https://www.frontiersin.org/articles/10.3389/fpsy.2021.728732/full#supplementary-material>

2. Lee EE, Depp C, Palmer BW, Glorioso D, Daly R, Liu J, et al. High prevalence and adverse health effects of loneliness in community-dwelling adults across the lifespan: role of wisdom as a protective factor. *Int Psychogeriatr*. (2019) 31:1447–62. doi: 10.1017/S1041610218002120

3. Brown BB, Chiang CP. Drug and alcohol abuse among the elderly: is being alone the key? *Int J Aging Hum Dev.* (1983) 18:1–12. doi: 10.2190/VRMK-T7UV-QKRT-KN1R
4. Shankar A, Hamer M, McMunn A, Steptoe A. Social isolation and loneliness: relationships with cognitive function during 4 years of follow-up in the English Longitudinal Study of Ageing. *Psychosom Med.* (2013) 75:161–70. doi: 10.1097/PSY.0b013e31827f09cd
5. Ellwardt L, van Tilburg T, Aartsen M, Wittek R, Steverink N. Personal networks and mortality risk in older adults: a twenty-year longitudinal study. *PLoS One.* (2015) 10:e0116731. doi: 10.1371/journal.pone.0116731
6. van der Veen DC, van Zelst WH, Schoevers RA, Comijs HC, Voshaar RC. Comorbid anxiety disorders in late-life depression: results of a cohort study. *Int Psychogeriatr.* (2015) 27:1157–65. doi: 10.1017/S1041610214002312
7. Crewdson JA. The effect of loneliness in the elderly population: a review. *Healthy Aging Clin Care Elderly.* (2016) 8:1–8. doi: 10.4137/HACCE.S35890
8. Momtaz YA, Hamid TA, Yusoff S, Ibrahim R, Chai ST, Yahaya N, et al. Loneliness as a risk factor for hypertension in later life. *J Aging Health.* (2012) 24:696–710. doi: 10.1177/0898264311431305
9. Buchman AS, Boyle PA, Wilson RS, James BD, Leurgans SE, Arnold SE, et al. Loneliness and the rate of motor decline in old age: the Rush Memory and Aging Project, a community-based cohort study. *BMC Geriatr.* (2010) 10:77. doi: 10.1186/1471-2318-10-77
10. Penninx BW, van Tilburg T, Kriegsman DM, Deeg DJ, Boeke AJ, van Eijk JT. Effects of social support and personal coping resources on mortality in older age: the Longitudinal Aging Study Amsterdam. *Am J Epidemiol.* (1997) 146:510–9. doi: 10.1093/oxfordjournals.aje.a009305
11. Sugisawa H, Liang J, Liu X. Social networks, social support, and mortality among older people in Japan. *J Gerontol.* (1994) 49:S3–S13. doi: 10.1093/geronj/49.1.S3
12. Daly J, Depp C, Graham SA, Jeste DV, Kim HC, Lee EE, et al. Health impacts of the “Stay at Home” order on community dwelling older adults and how technologies may help: a focus group study. *JMIR Aging.* (2021) 4:e25779. doi: 10.2196/preprints.25779
13. Badal VD, Graham SA, Depp CA, Shinkawa K, Yamada Y, Palinkas LA, et al. Prediction of loneliness in older adults using natural language processing: exploring sex differences in speech. *Am J Geriatr Psychiatry.* (2021) 29:853–66. doi: 10.1016/j.jagp.2020.09.009
14. Jeste DV, Glorioso D, Lee EE, Daly R, Graham S, Liu J, et al. Study of independent living residents of a continuing care senior housing community: sociodemographic and clinical associations of cognitive, physical, mental health. *Am J Geriatr Psychiatry.* (2019) 27:895–907. doi: 10.1016/j.jagp.2019.04.002
15. Morlett Paredes A, Lee EE, Chik L, Gupta S, Palmer BW, Palinkas LA, et al. Qualitative study of loneliness in a senior housing community: the importance of wisdom and other coping strategies. *Aging Ment Health.* (2021) 25:559–66. doi: 10.1080/13607863.2019.1699022
16. Kroenke K, Spitzer RL, Williams JB. The PHQ-9: validity of a brief depression severity measure. *J Gen Intern Med.* (2001) 16:606–13. doi: 10.1046/j.1525-1497.2001.016009606.x
17. Seeman TE, Lusignolo TM, Albert M, Berkman L. Social relationships, social support, and patterns of cognitive aging in healthy, high-functioning older adults: MacArthur studies of successful aging. *Health Psychol.* (2001) 20:243. doi: 10.1037/0278-6133.20.4.243
18. Russell DW. UCLA Loneliness Scale (Version 3): reliability, validity, factor structure. *J Pers Assess.* (1996) 66:20–40. doi: 10.1207/s15327752jpa6601_2
19. Doryab A, Villalba DK, Chikersal P, Dutcher JM, Tumminia M, Liu X, et al. Identifying behavioral phenotypes of loneliness and social isolation with passive sensing: statistical analysis, data mining and machine learning of smartphone and fitbit data. *JMIR Mhealth Uhealth.* (2019) 7:e13209. doi: 10.2196/13209
20. Joachims T. *A Probabilistic Analysis of the Rocchio Algorithm with TFIDF for Text Categorization.* Carnegie-Mellon Univ Pittsburgh Pa Dept of Computer Science (1996).
21. Aizawa A. An information-theoretic perspective of tf-idf measures. *Inf Process Manag.* (2003) 39:45–65. doi: 10.1016/S0306-4573(02)00021-3
22. Rajaraman A, Ullman JD. *Mining of Massive Datasets.* New York, NY: Cambridge University Press (2011).
23. Yamada Y, Shinkawa K, Shimmei K. Atypical repetition in daily conversation on different days for detecting Alzheimer's disease: evaluation of phone-call data from a regular monitoring service. *JMIR Mental Health.* (2020) 7:e16790. doi: 10.2196/16790
24. Ribeiro FN, Araújo M, Gonçalves P, Gonçalves MA, Benevenuto F. Sentibench-a benchmark comparison of state-of-the-practice sentiment analysis methods. *EPJ Data Sci.* (2016) 5:1–29. doi: 10.1140/epjds/s13688-016-0085-1
25. Demšar J, Erjavec A, Gorup C, Hocevar T, Milutinovic M, Mozina M, et al. Orange: data mining toolbox in Python. *J Mach Learn Res.* (2013) 14:2349–53.
26. Hughes G. On the mean accuracy of statistical pattern recognizers. *IEEE Trans Inf Theory.* (1968) 14:55–63. doi: 10.1109/TIT.1968.1054102
27. Saeyns Y, Inza I, Larranaga P. A review of feature selection techniques in bioinformatics. *Bioinformatics.* (2007) 23:2507–17. doi: 10.1093/bioinformatics/btm344
28. Remeseiro B, Bolon-Canedo V. A review of feature selection methods in medical applications. *Comput Biol Med.* (2019) 112:103375. doi: 10.1016/j.combiomed.2019.103375
29. Brown AJM. *Comprehensive Chemometrics, Vol. 3.* GINI Index (2009). Available online at: <https://www.sciencedirect.com/referencework/9780444527011/comprehensive-chemometrics> (accessed March, 2021).
30. Tyagi N. *Understanding the Gini Index and Information Gain in Decision Trees.* Available online at: <https://medium.com/analytics-steps/understanding-the-gini-index-and-information-gain-in-decision-trees-ab4720518ba8> (accessed March, 2021).
31. Von Heusinger K, Egli U. Introduction: reference and the semantics of anaphora. In: von Heusinger K, Egli U, editors. *Reference and Anaphoric Relations.* Dordrecht: Springer (2000). p. 1–13.
32. Smit J, Steglich-Petersen A. Anaphora and semantic innocence. *J Seman.* (2010) 27:119–24. doi: 10.1093/jos/ffp012
33. Karan A, Rosenthal R, Robbins ML. Meta-analytic evidence that we-talk predicts relationship and personal functioning in romantic couples. *J Soc Pers Relationsh.* (2019) 36:2624–51. doi: 10.1177/0265407518795336
34. Aron A, Aron EN, Norman C. Self-expansion model of motivation and cognition in close relationships and beyond. In: Fletcher GJO, Clark MS, editors. *Blackwell Handbook of Social Psychology.* Malden, MA: Interpersonal Processes Blackwell Publishers (2001). p. 478–501.
35. Simmons RA, Gordon PC, Chambless DL. Pronouns in marital interaction: what do “You” and “I” say about marital health? *Psychol Sci.* (2005) 16:932–6. doi: 10.1111/j.1467-9280.2005.01639.x
36. Agnew CR, Van Lange PAM, Rusbult CE, Langston CA. Cognitive interdependence: commitment and the mental representation of close relationships. *J Pers Soc Psychol.* (1998) 74:939–54. doi: 10.1037/0022-3514.74.4.939
37. Seider BH, Hirschberger G, Nelson KL, Levenson RW. We can work it out: age differences in relational pronouns, physiology, and behavior in marital conflict. *Psychol Aging.* (2009) 24:604–13. doi: 10.1037/a0016950
38. Williams-Baucum KJ, Atkins DC, Sevier M, Eldridge KA, Christensen A. “You” and “I” need to talk about “us”: linguistic patterns in marital interactions. *Pers Relationsh.* (2010) 17:41–56. doi: 10.1111/j.1475-6811.2010.01251.x
39. Hagedoorn M, Sanderman R, Bolks HN, Tuinstra J, Coyne JC. Distress in couples coping with cancer: a meta-analysis and critical review of role and gender effects. *Psychol Bull.* (2008) 134:1–30. doi: 10.1037/0033-2909.134.1.1
40. Rohrbaugh MJ, Mehl MR, Shoham V, Reilly ES, Ewy GA. Prognostic significance of spouse “we” talk in couples coping with heart failure. *J Consult Clin Psychol.* (2008) 76:781–9. doi: 10.1037/a0013238
41. Helgeson VS, Jakubiak B, Seltman H, Hausmann L, Korytkowski M. Implicit and explicit communal coping in couples with recently diagnosed type 2 diabetes. *J Soc Pers Relationsh.* (2017) 34:1099–121. doi: 10.1177/0265407516669604
42. Rentscher KE, Rohrbaugh MJ, Shoham V, Mehl MR. Asymmetric partner pronoun use and demand-withdraw interaction in couples coping with health problems. *J Fam Psychol.* (2013) 27:691–701. doi: 10.1037/a0034184
43. Rude S, Gortner E-M, Pennebaker J. Language use of depressed and depression-vulnerable college students. *Cogn Emot.* (2004) 18:1121–33. doi: 10.1080/02699930441000030

44. Nolen-Hoeksema S. Sex differences in unipolar depression: evidence and theory. *Psychol Bull.* (1987) 101:259. doi: 10.1037/0033-2909.101.2.259
45. Lyubomirsky S, Layous K, Chancellor J, Nelson SK. Thinking about rumination: the scholarly contributions and intellectual legacy of Susan Nolen-Hoeksema. *Annu Rev Clin Psychol.* (2015) 11:1–22. doi: 10.1146/annurev-clinpsy-032814-112733
46. Nolen-Hoeksema S, Larson J, Grayson C. Explaining the gender difference in depressive symptoms. *J Pers Soc Psychol.* (1999) 77:1061. doi: 10.1037/0022-3514.77.5.1061
47. Kross E, Ayduk O. Facilitating adaptive emotional analysis: distinguishing distanced-analysis of depressive experiences from immersed-analysis and distraction. *Pers Soc Psychol Bull.* (2008) 34:924–38. doi: 10.1177/0146167208315938
48. Mehl MR, Raison CL, Pace TWW, Arevalo JMG, Cole SW. Natural language indicators of differential gene regulation in the human immune system. *Proc Natl Acad Sci U S A.* (2017) 114:12554–9. doi: 10.1073/pnas.1707373114
49. ODEA B, Boonstra TW, Larsen ME, Nguyen T, Venkatesh S, Christensen H. The relationship between linguistic expression and symptoms of depression, anxiety, and suicidal thoughts: a longitudinal study of blog content. *PLoS ONE.* (2021) 16:e0251787.
50. Guntuku SC, Schneider R, Pelullo A, Young J, Wong V, Ungar L, et al. Studying expressions of loneliness in individuals using twitter: an observational study. *BMJ Open.* (2019) 9:e030355. doi: 10.1136/bmjopen-2019-030355
51. Berisha V, Wang S, LaCross A, Liss J, Garcia-Filion P. Longitudinal changes in linguistic complexity among professional football players. *Brain Lang.* (2017) 169:57–63. doi: 10.1016/j.bandl.2017.02.003
52. Smith A. *Older Adults and Technology Use.* Pew Research Center (2014).
53. Statista Research Department. *Percentage of U.S. Adults Who Use Facebook as of February 2021 by Age Group* (2021).
54. Bosak K, Park SH. Characteristics of adults' use of facebook and the potential impact on health behavior: secondary data analysis. *Interact J Med Res.* (2018) 7:e9554. doi: 10.2196/ijmr.9554
55. Linardatos P, Papastefanopoulos V, Kotsiantis S. Explainable ai: a review of machine learning interpretability methods. *Entropy.* (2021) 23:18. doi: 10.3390/e23010018
56. Cuskley C, Colaiori F, Castellano C, Loreto V, Pugliese M, Tria F. The adoption of linguistic rules in native and non-native speakers: evidence from a Wug task. *J Mem Lang.* (2015) 84:205–23. doi: 10.1016/j.jml.2015.06.005
57. Bloem J, Wieling M, Nerbonne J. Automatically identifying characteristic features of non-native English accents. *Future Dialects.* (2016) 155–73. doi: 10.17169/LANGSCI.B81.148
58. Brown R, Gilman A. The pronouns of power and solidarity. In: Fishman JA, editor. *Readings in the Sociology of Language.* Berlin; Boston: De Gruyter Mouton (2012). p. 252–75. doi: 10.1515/9783110805376.252
59. Sitnikov D, Titova O, Romanenko O, Ryabov O. A method for finding minimal sets of features adequately describing discrete information objects. *WIT Trans Inf Commun Technol.* (2009) 42:143–53. doi: 10.2495/DATA090141
60. Vaswani A, Shazeer N, Parmar N, Uszkoreit J, Jones L, Gomez AN, et al. Attention is all you need. *Adv Neural Inf Process Syst.* (2017) 5998–6008. Available online at: <https://arxiv.org/abs/1706>.
61. Gao S, Alawad M, Young MT, Gounley J, Schaefferkoetter N, Yoon H-J, et al. Limitations of transformers on clinical text classification. *IEEE J Biomed Health Inf.* (2021) 25:3596–607. doi: 10.1109/JBHI.2021.3062322
62. Data ScienceStack Exchange. *Why do BERT Classification Do Worse With Longer Sequence Length?*
63. Liu B, Huang J, Cai X, Church K. Better than BERT but worse than baseline. *arXiv:2105.05915 [arXiv preprint]* (2021).

Conflict of Interest: KS, YY, and H-CK are employees of IBM.

The remaining authors declare that the research was conducted in the absence of any commercial or financial relationships that could be construed as a potential conflict of interest.

Publisher's Note: All claims expressed in this article are solely those of the authors and do not necessarily represent those of their affiliated organizations, or those of the publisher, the editors and the reviewers. Any product that may be evaluated in this article, or claim that may be made by its manufacturer, is not guaranteed or endorsed by the publisher.

Copyright © 2021 Badal, Nebeker, Shinkawa, Yamada, Rentscher, Kim and Lee. This is an open-access article distributed under the terms of the Creative Commons Attribution License (CC BY). The use, distribution or reproduction in other forums is permitted, provided the original author(s) and the copyright owner(s) are credited and that the original publication in this journal is cited, in accordance with accepted academic practice. No use, distribution or reproduction is permitted which does not comply with these terms.