

# UC San Diego

## UC San Diego Previously Published Works

### Title

Automated Breast Arterial Calcification Score Is Associated With Cardiovascular Outcomes and Mortality

### Permalink

<https://escholarship.org/uc/item/05t610dc>

### Journal

JACC Advances, 3(11)

### ISSN

2772-963X

### Authors

Allen, Tara Shrout

Bui, Quan M

Petersen, Gregory M

et al.

### Publication Date

2024-11-01

### DOI

10.1016/j.jacadv.2024.101283

Peer reviewed

## ORIGINAL RESEARCH

# Automated Breast Arterial Calcification Score Is Associated With Cardiovascular Outcomes and Mortality



Tara Shrout Allen, MD, MSc,<sup>a,\*</sup> Quan M. Bui, MD,<sup>b,\*</sup> Gregory M. Petersen, MD,<sup>c</sup> Richard Mantey, MS,<sup>d</sup> Junhao Wang, MS,<sup>d</sup> Nitesh Nerlekar, MBBS, MPH, PhD,<sup>e,f</sup> Mohammad Eghtedari, MD, PhD,<sup>g</sup> Lori B. Daniels, MD, MAS<sup>b</sup>

## ABSTRACT

**BACKGROUND** Breast arterial calcification (BAC) on mammograms has emerged as a biomarker of women's cardiovascular disease (CVD) risk, but there is a lack of quantification tools and clinical outcomes studies.

**OBJECTIVES** This study assessed the association of BAC (both presence and quantity) with CVD outcomes.

**METHODS** This single-center, retrospective study included women with a screening mammogram from 2007 to 2016. BAC was quantified using an artificial intelligence-generated score, which was assessed as both a binary and continuous variable. Regression analyses evaluated the association between BAC and mortality and a composite of acute myocardial infarction, heart failure, stroke, and mortality. Analyses were adjusted for age, race, diabetes, smoking, blood pressure, cholesterol, and history of CVD and chronic kidney disease.

**RESULTS** A total of 18,092 women were included in this study (mean age  $56.8 \pm 11.0$  years; diabetes [13%], hypertension [36%], hyperlipidemia [40%], and smoking [5%]). BAC was present in 4,223 (23%). Over a median follow-up of 6 years, death occurred in 7.8% and 2.3% of women with and without BAC, respectively. The composite occurred in 12.4% and 4.3% of women with and without BAC, respectively. Compared to those without, women with BAC had adjusted HRs of 1.49 (95% CI: 1.33-1.67) for mortality and 1.56 (95% CI: 1.41-1.72) for the composite. Each 10-point increase in the BAC score was associated with higher risk of mortality (HR: 1.08 [95% CI: 1.06-1.11]) and the composite (HR: 1.08 [95% CI: 1.06-1.10]). BAC was especially predictive of future events among younger women.

**CONCLUSIONS** BAC is independently associated with mortality and CVD, especially among younger women. Measurement of BAC beyond presence adds incremental risk stratification. Quantifying BAC using an artificial intelligence algorithm is feasible, clinically relevant, and may improve personalized CVD risk stratification. (JACC Adv. 2024;3:101283) © 2024 The Authors. Published by Elsevier on behalf of the American College of Cardiology Foundation. This is an open access article under the CC BY license (<http://creativecommons.org/licenses/by/4.0/>).

From the <sup>a</sup>Division of Preventive Medicine, University of California-San Diego, La Jolla, California, USA; <sup>b</sup>Division of Cardiovascular Medicine, University of California-San Diego, La Jolla, California, USA; <sup>c</sup>Internal Medicine Residency Program, University of California-San Diego, La Jolla, California, USA; <sup>d</sup>Research Team, CureMetrix, Inc, La Jolla, California, USA; <sup>e</sup>Baker Heart and Diabetes Institute, Melbourne, Australia; <sup>f</sup>Victorian Heart Institute & Monash Health Heart, Monash University, Clayton, Australia; and the <sup>g</sup>Department of Radiology, University of California-San Diego, La Jolla, California, USA. \*Drs Allen and Bui contributed equally to this work and also served as co-first authors.

The authors attest they are in compliance with human studies committees and animal welfare regulations of the authors' institutions and Food and Drug Administration guidelines, including patient consent where appropriate. For more information, visit the [Author Center](#).

Manuscript received April 4, 2024; revised manuscript received July 29, 2024, accepted August 2, 2024.

**ABBREVIATIONS  
AND ACRONYMS**

|              |  |
|--------------|--|
| <b>aHR</b>   | = adjusted HR                              |
| <b>AI</b>    | = artificial intelligence                  |
| <b>ASCVD</b> | = atherosclerotic cardiovascular disease   |
| <b>BAC</b>   | = breast arterial calcification            |
| <b>CAC</b>   | = coronary artery calcification            |
| <b>CAD</b>   | = coronary artery disease                  |
| <b>CKD</b>   | = chronic kidney disease                   |
| <b>CVD</b>   | = cardiovascular disease                   |
| <b>EHR</b>   | = electronic health record                 |
| <b>HF</b>    | = heart failure                            |
| <b>ICD</b>   | = International Classification of Diseases |
| <b>LDL</b>   | = low-density lipoprotein                  |
| <b>MI</b>    | = myocardial infarction                    |
| <b>PAD</b>   | = peripheral arterial disease              |

**C**ardiovascular disease (CVD) remains the leading cause of death in women despite significant advances in cardiovascular diagnostics and treatments.<sup>1</sup> Delays in diagnosis and treatment, as well as undertreatment, contribute to morbidity and mortality.<sup>2</sup> This is further exacerbated by under-representation of women in cardiovascular clinical trials and lack of sex-specific screening tools.<sup>3</sup> Efficient and effective methods to broadly screen women for CVD risk are sorely needed.

Breast arterial calcification (BAC), an incidental finding on mammograms, has emerged as a sex-specific biomarker for atherosclerotic cardiovascular disease (ASCVD) that offers the potential for personalized risk stratification.<sup>4</sup> The prevalence of mammographic BAC increases with age, occurring in 10% of women at age 40 but in up to 50% by age 80 years.<sup>5-7</sup> In semiquantitative analysis using radiologist assessments, high-grade or severe

BAC was rare in younger women, but approached 14% by age 70 years.<sup>8</sup>

Gleaning information from an imaging study beyond its original intent is not new; analogous to BAC on mammography is coronary artery calcifications (CACs) seen on chest computed tomography obtained for noncardiac purposes.<sup>9</sup> BAC has tremendous appeal for cardiovascular risk stratification because it is noninvasive, comes at no additional cost or radiation, and the majority of women over the age of 40 years already undergo annual screening mammography for breast cancer.<sup>10</sup>

Multiple studies have found significant associations between the presence of BAC and prevalent CVD.<sup>4</sup> It is postulated that BAC represents lifetime exposure to risk factors related to arterial stiffening, which increases the risk of CVD through both coronary and noncoronary mechanisms (ie, heart failure [HF] and stroke).<sup>11</sup> However, routine clinical use of BAC has not been adopted due to a lack of outcomes studies as well as technological challenges in measuring and reporting BAC.<sup>4</sup> Currently, there is no consensus recommendation on the inclusion or standardized reporting of BAC, and American College of Radiology guidelines on breast imaging classifies reporting of vascular calcifications as optional.<sup>12,13</sup> However, in 2023, the Canadian Society of Breast Imaging took a progressive stance, advocating for standardized reporting of BAC in mammogram reports.<sup>14</sup>

Moreover, most BAC studies are limited to the binary presence or absence of BAC, and thus are blind

to the severity or burden of BAC. Few studies measure or categorize BAC by severity and there is significant heterogeneity in classification.<sup>7</sup> The purpose of this study was to evaluate not only the association of BAC presence with CVD risk factors and hard clinical outcomes in a large population but also to validate the utility of a novel automated, artificial intelligence (AI) algorithm for personalized BAC quantification.

**METHODS**

**STUDY POPULATION.** This single-center retrospective study included women between the ages of 40 and 90 years who underwent screening digital mammography between 2007 and 2016 at the University of California-San Diego Health. For each subject, only the index mammogram was analyzed. All protocols were approved by the Institutional Review Board (IRB #170154).

**EVALUATION OF BAC.** BAC was quantified using a validated, proprietary investigational software (cmAngio, CureMetrix) based on a deep neural, AI network, and previously trained with an 80:20 split using over 34,000 2D full-field digital mammograms and digital breast tomosynthesis mammograms obtained from multiple sites across 13 health care facilities in Australia, Brazil, and the United States (not including University of California San Diego Health).

As a standard, 4 full-field digital mammograms or digital breast tomosynthesis images from each participant were used. The software cmAngio assesses screening mammography images and feeds them through the deep learning model to identify regions of interest within the breast. These regions correspond to areas that the algorithm suspects to have a high probability of BAC. From these identified regions, local and global imaging features such as density, contrast, and other physical dimensions are combined to determine the presence and severity of BAC. This process is applied to each of the 4 standard screening mammography images. Following these calculations, each image is assigned a score between 0 and 100 corresponding to the severity of the BAC finding(s), with 0 representing no BAC and 100 representing the highest percentile of BAC. To balance the algorithm's false positive and false negative rate, all image-level scores less than 5 are floored to 0. The patient-level score (or BAC score) is the mean of the threshold image-level scores across all 4 views. As such, BAC presence was defined as a mean BAC score  $\geq 5$ . BAC was evaluated as a binary variable (presence vs absence), continuous variable (BAC score 0-100), and quartile groups (first-fourth). Scores

were distributed by severity into the following groups: first quartile [score 1-25], second quartile [score 26-50], third quartile [score 51-75], and fourth quartile [score 76-100].

During development, each case was reviewed by 2 of 11 Mammography Quality Standards Act-certified radiologists. The performance of the software for detecting BAC, as assessed by area under the receiver operating characteristic curve was 0.98, with a sensitivity of 94% and a specificity of 96%. The software is cleared for BAC detection by the Food and Drug Administration and has been deployed in investigational clinical settings with Institutional Review Board approval.

**CLINICAL DATA AND OUTCOMES.** All clinical data including baseline characteristics and outcomes were collected using electronic health records (EHRs) and International Classification of Diseases (ICD)-10 codes, which are provided in [Supplemental Table 1](#). All incident diagnoses occurred at least 6 months after the index mammogram and until death or the censoring date of December 31, 2020. The primary outcome was all-cause mortality. Secondary outcomes included acute myocardial infarction (MI), HF, stroke, and a cardiovascular composite outcome (MI, HF, stroke, and mortality). Stroke (cerebrovascular disease) included ischemic and hemorrhagic stroke. Those with baseline MI, HF, or stroke were excluded from the relevant outcome analyses, including the composite outcome. Additionally, in a sensitivity analysis, all participants with baseline ASCVD were excluded to reassess the associations. ASCVD was defined by the following ICD-10 diagnoses: ASCVD, coronary artery disease (CAD), peripheral arterial disease (PAD), HF, and/or cerebrovascular disease.

**ANALYSES AND STATISTICAL METHODS.** Continuous variables were reported either as mean with standard deviation or as median with interquartile range as appropriate based on normality of distribution assessed by Shapiro-Wilk test. Categorical variables were expressed as counts with percentages. Variables were compared using the unpaired Student *t*-test, Mann-Whitney test, and Fisher's exact test, as appropriate. Proportional hazards assumptions were tested for all outcomes to verify modeling assumption. Furthermore, Schoenfeld residual plots were generated for confirmation. Kaplan-Meier survival curves (plotted with 95% CIs), cumulative incidence plots (as appropriate), and Cox proportional hazards regression analyses were used to determine associations between BAC (as a binary and continuous variable) and clinical outcomes, while adjusting for variables at the time of mammogram (age, race/

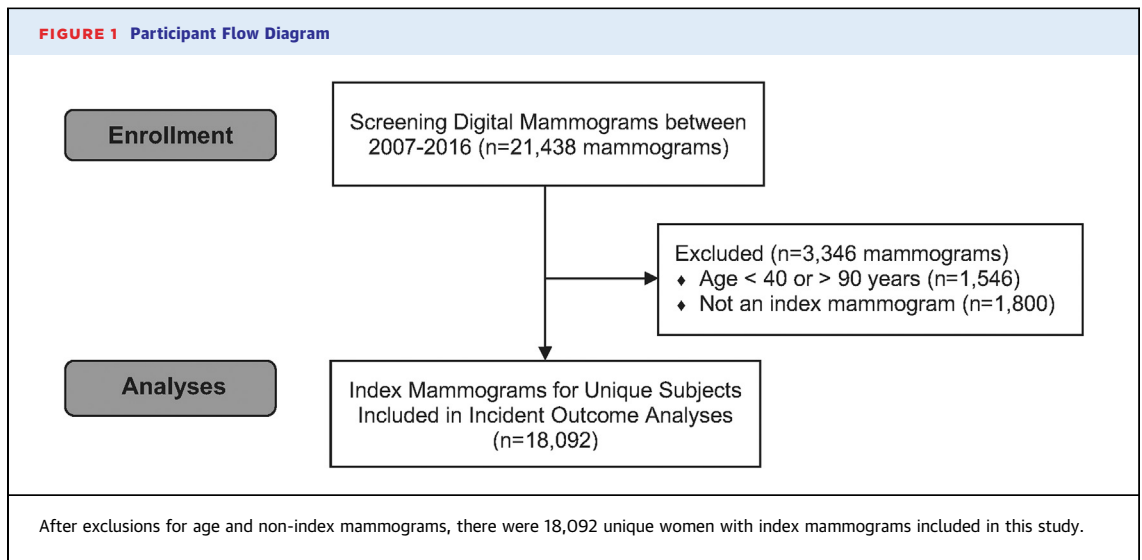
ethnicity, smoking status, systolic blood pressure, diastolic blood pressure, total cholesterol, low-density lipoprotein [LDL] cholesterol, diabetes mellitus, and a history of CVD or chronic kidney disease [CKD]).

Age was continuous and measured in years. Smoking status was categorical and defined as current, former, never, or unknown. Systolic and diastolic blood pressures were continuous and measured in mm Hg. Total cholesterol and LDL cholesterol were continuous and measured in mg/dL. For other covariates, diabetes mellitus and CKD were defined by the associated ICD-10 code ([Supplemental Table 1](#)). CVD was defined as an ICD-10 code for any of the following: ASCVD, MI, CAD, HF, and/or stroke (cerebrovascular disease). For those without covariate data from the time of the index mammogram, imputation was performed to account for these missing data. Data were imputed by training a nearest neighbor multiple-imputation model in Python to predict missing variables using the 10 nearest neighbors based on the collected diagnosis codes, age, ethnicity, smoking status, blood pressure (systolic and diastolic), and cholesterol (total and LDL).

Forest plots were created to assess the association between BAC and outcomes, stratified by subgroups of baseline characteristics. Tails represent 95% CIs. All reported *P* values were 2-sided with a value of <0.05 considered statistically significant. Statistical analyses and figures were completed using Python 3.11.5 with packages including Pandas 2.1.0 and SciPy 1.11.2.

## RESULTS

**STUDY POPULATION.** There were 21,438 screening mammograms obtained between 2007 and 2016. Of these, 1,546 were excluded for age and 1,800 were excluded for not being the index study. Therefore, 18,092 women with index mammograms were included in the study ([Figure 1](#)). Among the 18,092 women included, the mean age was  $56.8 \pm 11.0$  years with prevalent CVD risk factors of diabetes (13%), hypertension (36%), and hyperlipidemia (40%) ([Table 1](#)). BAC was present in 4,223 (23%). BAC was more prevalent among women who were older, Black or Hispanic, diabetic, hypertensive, with a history of ASCVD or CKD, and taking statins and/or antihypertensive medications. BAC was less prevalent in current smokers. Among those with BAC, the median score was 15 (IQR: 4, 50). Scores were distributed by severity into the following quartile groups: first quartile [score 1-25], *n* = 2,552 (60.4%); second quartile [score 26-50], *n* = 643 (15.2%); third quartile



[score 51-75],  $n = 509$  (12.1%); and fourth quartile [score 76-100],  $n = 519$  (12.3%). Correspondingly, those with a higher BAC score were more likely to be older, diabetic, hypertensive, having a history of CVD, CKD or hyperlipidemia, and taking statin and antihypertensive medications. (Supplemental Table 2). Additionally, details on imputation and

missing covariate data are presented in Supplemental Table 3.

**CLINICAL OUTCOMES.** Over a median follow-up for mortality of 4.8 years (IQR: 4.2 years), there were 329 deaths in those with BAC (7.8%) and 313 deaths in those without BAC (2.3%) ( $P < 0.001$ ) (Table 2). Over a median follow-up for the composite outcome of

**TABLE 1 Baseline Participant Characteristics by Presence of Breast Arterial Calcification**

|                                | Total<br>(n = 18,092) | BAC Present<br>(n = 4,223; 23%) | BAC Absent<br>(n = 13,869; 77%) | P Value |
|--------------------------------|-----------------------|---------------------------------|---------------------------------|---------|
| Age, y                         | 56.8 ± 11.4           | 65.2 ± 11.6                     | 54.2 ± 10.0                     | <0.001  |
| Race/ethnicity                 |                       |                                 |                                 |         |
| Caucasian                      | 11,319 (62.6)         | 2,617 (62.0)                    | 8,702 (62.7)                    | 0.38    |
| Black/African American         | 907 (5.0)             | 241 (5.7)                       | 666 (4.8)                       | 0.02    |
| Hispanic/Latino                | 1,694 (9.4)           | 455 (10.8)                      | 1,239 (8.9)                     | <0.001  |
| Asian/Pacific Islander         | 2,321 (12.8)          | 496 (11.8)                      | 1,825 (13.2)                    | 0.02    |
| Other                          | 1,851 (10.2)          | 414 (9.8)                       | 1,437 (10.4)                    | 0.31    |
| Diabetes                       | 2,267 (12.5)          | 730 (17.3)                      | 1,537 (11.1)                    | <0.001  |
| Hypertension                   | 6,529 (36.1)          | 2,179 (51.6)                    | 4,350 (31.4)                    | <0.001  |
| Hyperlipidemia                 | 7,256 (40.1)          | 2,071 (49.0)                    | 5,185 (37.4)                    | <0.001  |
| History of CVD                 | 874 (4.8)             | 424 (10.0)                      | 450 (3.2)                       | <0.001  |
| History of CKD                 | 802 (4.4)             | 358 (8.48)                      | 444 (3.2)                       | <0.001  |
| Current smoking                | 834 (4.6)             | 134 (3.17)                      | 700 (5.1)                       | <0.001  |
| Never smokers                  | 9,245 (51.1)          | 2,046 (48.5)                    | 7,199 (52.6)                    | <0.001  |
| Systolic blood pressure, mm Hg | 123 (21)              | 128 (20)                        | 122 (20)                        | <0.001  |
| Total cholesterol, mg/dL       | 198 (52)              | 194 (53)                        | 199 (51)                        | <0.001  |
| Statin use                     | 3,947 (21.8)          | 1,430 (33.9)                    | 2,517 (18.1)                    | <0.001  |
| Antihypertensive use           | 3,498 (19.3)          | 1,313 (31.1)                    | 2,185 (15.8)                    | <0.001  |

Values are mean ± SD, n (%), or median (IQR).

BAC = breast arterial calcification; CKD = chronic kidney disease; CVD = cardiovascular disease.

**TABLE 2 Clinical Outcomes by Breast Arterial Calcification Presence**

|                                | Total<br>(N = 18,092) |              | BAC Present<br>(n = 4,223) |             | BAC Absent<br>(n = 13,869) |            | P Value |
|--------------------------------|-----------------------|--------------|----------------------------|-------------|----------------------------|------------|---------|
| Myocardial infarction          | 18,051                | 83 (0.5%)    | 4,204                      | 36 (0.9%)   | 13,847                     | 47 (0.3%)  |         |
| Heart failure                  | 17,911                | 298 (1.7%)   | 4,119                      | 154 (3.7%)  | 13,792                     | 144 (1.0%) |         |
| Stroke                         | 17,914                | 259 (1.5%)   | 4,138                      | 110 (2.7%)  | 13,776                     | 149 (1.1%) |         |
| Mortality                      | 18,092                | 642 (3.6%)   | 4,223                      | 329 (7.8%)  | 13,869                     | 313 (2.3%) | <0.001  |
| Composite outcome <sup>a</sup> | 17,720                | 1,082 (6.1%) | 4,031                      | 500 (12.4%) | 13,689                     | 582 (4.3%) | <0.001  |

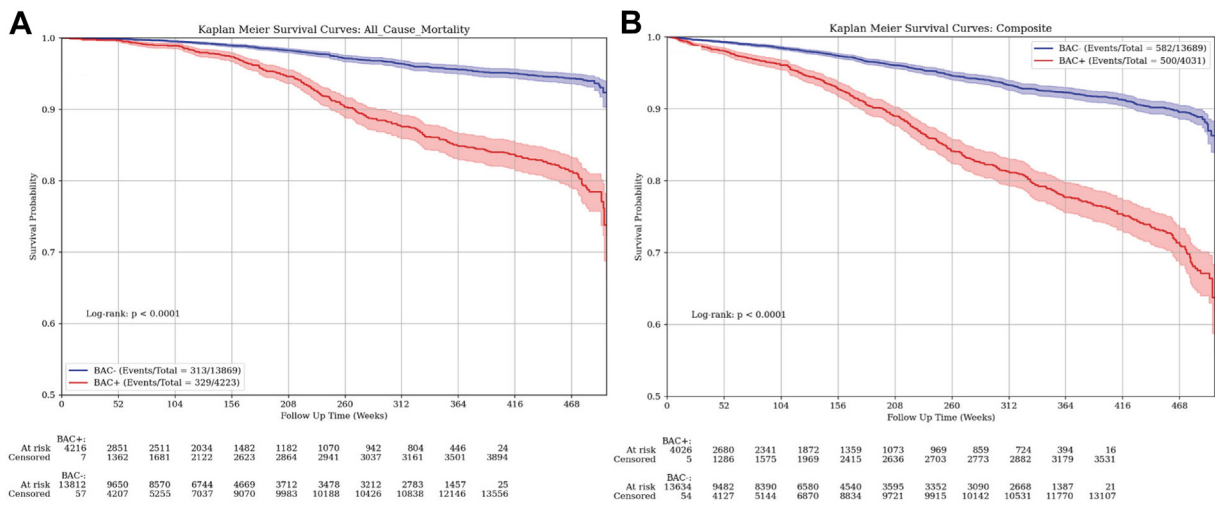
Values are N or n (%). <sup>a</sup>The cardiovascular composite outcome included acute myocardial infarction, heart failure, stroke, and mortality. Abbreviations as in Table 1.

4.3 years (IQR: 4.3 years), there were 500 events in those with BAC (12.4%) and 582 events in those without BAC (4.3%) ( $P < 0.001$ ). Stroke, MI, and HF were more frequently observed in those with BAC present, although the competing risk of death precludes statistical comparison. Kaplan-Meier Plots for mortality and the composite outcome are shown in Figure 2, which demonstrate a significantly increased risk of outcomes in those with BAC ( $P < 0.001$  for each). Additionally, for HF, over a median follow-up of 3.0 years (IQR: 4.6 years), there were 154 events in those with BAC (3.7%) and 144 events in those without BAC (1.0%) ( $P < 0.001$ ). For MI, over a median follow-up of 3.3 years (IQR: 3.9 years), there were 36 events in those with BAC (0.9%) and 47 events in those without BAC (0.3%) ( $P < 0.001$ ). Lastly, for

stroke, over a median follow-up of 3.0 years (IQR: 4.7 years), there were 110 events in those with BAC (2.7%) and 149 events in those without BAC (1.1%) ( $P < 0.001$ ). Cumulative incidence plots for individual outcomes of stroke, MI, and HF are shown in Supplemental Figure 1, which also demonstrate significantly increased risk in those with BAC ( $P < 0.001$  for each outcome).

In multivariable analysis, women with BAC present had a significantly higher risk of mortality (adjusted HR [aHR]: 1.49 [95% CI: 1.33-1.68],  $P < 0.001$ ) and the composite outcome (aHR: 1.57 [95% CI: 1.42-1.74],  $P < 0.001$ ), compared to those without BAC (Table 3). Exclusion of those prescribed statin therapy (n = 3,947) did not materially affect the results: mortality aHR 1.45 (95% CI: 1.29-1.63),  $P < 0.001$  and

**FIGURE 2 Kaplan-Meier Plots for Mortality and Composite Outcome by Breast Arterial Calcification Presence**



Risk for (A) mortality, and (B) the cardiovascular composite outcome significantly varied by the presence of breast arterial calcification ( $P < 0.001$  for each). The composite outcome included acute myocardial infarction, heart failure, stroke, and mortality. Time points of 208 weeks and 468 weeks are indicative of approximately 4 years and 9 years, respectively. BAC = breast arterial calcification; BAC+ = presence of BAC; BAC- = absence of BAC.

**TABLE 3 Association of Breast Arterial Calcification Presence and Clinical Outcomes**

|  | Mortality HR (95% CI) | P Value | Composite Outcome <sup>a</sup> HR (95% CI) | P Value |
|--|-----------------------|---------|--|---------|
| Among all participants                           | (n = 642/18,092)      |         | (n = 1,082/17,720)                         |         |
| Model 1  | 1.70 (1.52-1.90)      | <0.001  | 1.92 (1.74-2.11)                           | <0.001  |
| Model 2  | 1.58 (1.41-1.77)      | <0.001  | 1.67 (1.51-1.84)                           | <0.001  |
| Model 3  | 1.49 (1.33-1.68)      | <0.001  | 1.57 (1.42-1.74)                           | <0.001  |
| Excluding those prescribed statins               | (n = 400/14,145)      |         | (n = 739/14,145)                           |         |
| Model 3  | 1.45 (1.29-1.63)      | <0.001  | 1.53 (1.38-1.69)                           | <0.001  |
| Excluding those with baseline ASCVD <sup>b</sup> | (n = 565/17,334)      |         | (n = 1,025/17,321)                         |         |
| Model 3  | 1.44 (1.28-1.62)      | <0.001  | 1.50 (1.35-1.66)                           | <0.001  |

<sup>a</sup>Composite outcome: acute myocardial infarction, heart failure, stroke, and mortality. <sup>b</sup>An additional 758 participants with any baseline ASCVD were excluded for the mortality outcome and an additional 399 participants with specific baseline conditions not already accounted for were excluded for the composite outcome. Model 1: unadjusted. Model 2: adjusted for age and race/ethnicity. Model 3: adjusted for age, race/ethnicity, systolic blood pressure, diastolic blood pressure, diabetes, total cholesterol, low-density lipoprotein cholesterol, history of cardiovascular disease, history of chronic kidney disease, and smoking status.  
ASCVD = atherosclerotic cardiovascular disease.

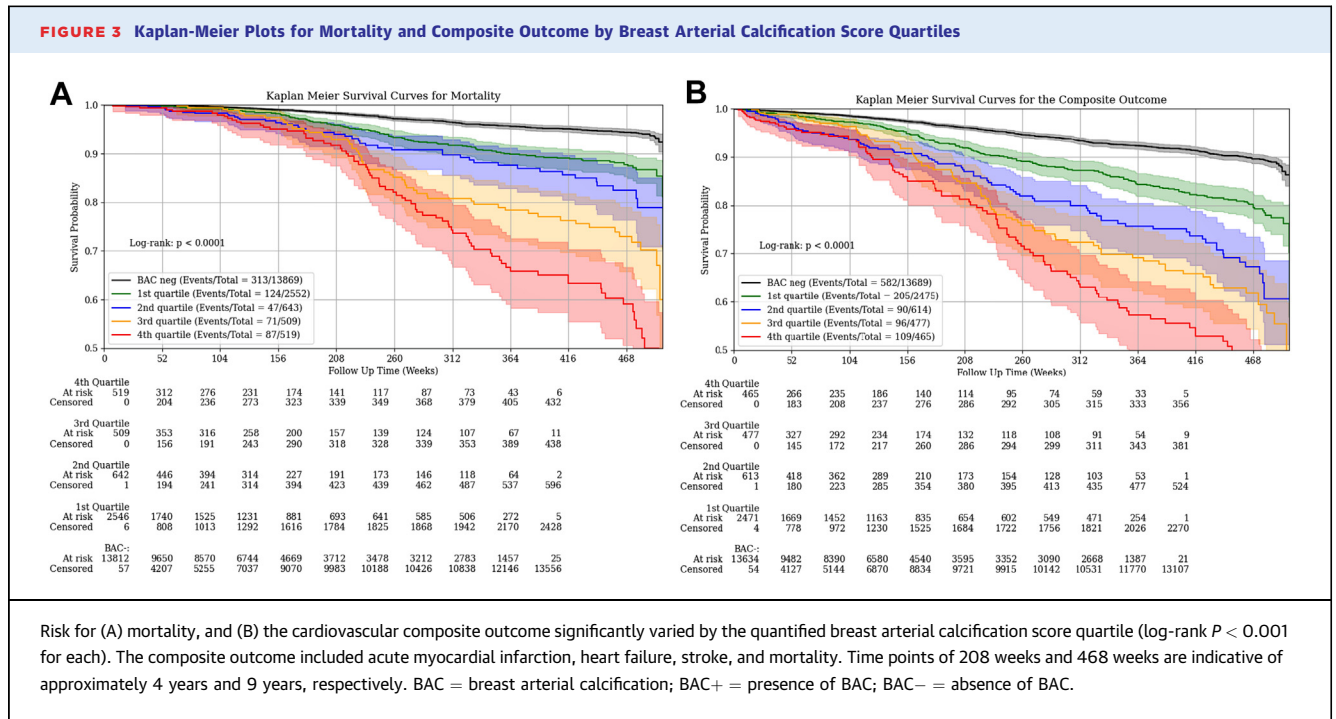
the composite outcome aHR 1.53 (95% CI: 1.38-1.69),  $P < 0.001$  (Table 3). After excluding those with any baseline ASCVD, results were essentially unchanged (Table 3). For example, for the mortality outcome, exclusion of 758 participants with baseline ASCVD still led to a significant difference (aHR: 1.44 [95% CI: 1.28-1.62];  $P < 0.001$ ). For the composite outcome, exclusion of those with baseline ASCVD, CAD, and PAD (n = 399) did not significantly alter the results (aHR: 1.50 [95% CI: 1.35-1.66];  $P < 0.001$ ) (Table 3).

When BAC was quantified and analyzed as a continuous score, each 10-point increase in the BAC score was significantly and independently associated with higher risk for adverse outcomes: mortality (aHR: 1.08 [95% CI: 1.06-1.11];  $P < 0.001$ ) and composite outcome (aHR: 1.08 [95% CI: 1.06-1.10];  $P < 0.001$ ) (Table 4). After excluding those on statin therapy, results again were unchanged: mortality (aHR: 1.01 [95% CI: 1.007-1.013];  $P < 0.001$ ) and the composite outcome (aHR: 1.01 [95% CI: 1.008-1.013];

**TABLE 4 Association of the Breast Arterial Calcification Score and Clinical Outcomes**

|  | Mortality aHR (95% CI) | P Value | Composite Outcome <sup>a</sup> aHR (95% CI) | P Value |
|--|------------------------|---------|---|---------|
| Among all participants                           | (n = 642/18,092)       |         | (n = 1,082/17,720)                          |         |
| BAC negative, n = 13,869                         | Referent               | -       | Referent                                    | -       |
| Per 10-point BAC score increase                  | 1.08 (1.06-1.11)       | <0.001  | 1.08 (1.06-1.10)                            | <0.001  |
| First quartile [score 1-25], n = 2,552           | 1.22 (1.06-1.41)       | 0.006   | 1.26 (1.11-1.43)                            | <0.001  |
| Second quartile [score 26-50], n = 643           | 1.44 (1.13-1.85)       | 0.004   | 1.74 (1.42-2.13)                            | <0.001  |
| Third quartile [score 51-75], n = 509            | 1.69 (1.33-2.14)       | <0.001  | 1.83 (1.49-2.25)                            | <0.001  |
| Fourth quartile [score 76-100], n = 519          | 2.27 (1.81-2.85)       | <0.001  | 2.30 (1.88-2.82)                            | <0.001  |
| Excluding those prescribed statins               | (n = 400/14,145)       |         | (n = 739/14,145)                            |         |
| BAC negative, n = 11,352                         | Referent               | -       | Referent                                    | -       |
| Per 10-point BAC score increase                  | 1.01 (1.007-1.013)     | <0.001  | 1.01 (1.008-1.013)                          | <0.001  |
| First quartile [score 1-25], n = 1,838           | 1.27 (1.07-1.51)       | 0.007   | 1.25 (1.07-1.46)                            | 0.006   |
| Second quartile [score 26-50], n = 390           | 1.48 (1.07-2.06)       | 0.018   | 1.72 (1.31-2.27)                            | <0.001  |
| Third quartile [score 51-75], n = 295            | 1.58 (1.13-2.19)       | 0.007   | 1.69 (1.26-2.25)                            | <0.001  |
| Fourth quartile [score 76-100], n = 270          | 2.53 (1.81-3.53)       | <0.001  | 2.61 (1.97-3.47)                            | <0.001  |
| Excluding those with baseline ASCVD <sup>b</sup> | (n = 565/17,428)       |         | (n = 1,025/17,428)                          |         |
| BAC negative, n = 13,540                         | Referent               | -       | Referent                                    | -       |
| Per 10-point BAC score increase                  | 1.01 (1.006-1.011)     | <0.001  | 1.01 (1.007-1.011)                          | <0.001  |
| First quartile [score 1-25], n = 2,414           | 1.21 (1.05-1.40)       | 0.007   | 1.15 (0.97-1.36)                            | 0.111   |
| Second quartile [score 26-50], n = 593           | 1.39 (1.09-1.78)       | 0.008   | 1.34 (0.98-1.83)                            | 0.071   |
| Third quartile [score 51-75], n = 459            | 1.59 (1.26-2.01)       | <0.001  | 1.62 (1.15-2.29)                            | 0.006   |
| Fourth quartile [score 76-100], n = 422          | 2.20 (1.75-2.75)       | <0.001  | 2.14 (1.53-3.00)                            | <0.001  |

<sup>a</sup>Composite outcome: acute myocardial infarction, heart failure, stroke, and mortality. <sup>b</sup>An additional 758 participants with any baseline ASCVD were excluded for the mortality outcome and an additional 399 participants with specific baseline conditions not already accounted for were excluded for the composite outcome. All data from the multivariable-adjusted model (Model 3), which adjusted for age, race/ethnicity, systolic blood pressure, diastolic blood pressure, diabetes, total cholesterol, low-density lipoprotein cholesterol, history of CVD, history of chronic kidney disease, and smoking status.  
aHR = adjusted HR; other abbreviation as in Table 3.



$P < 0.001$ ). After excluding those with baseline ASCVD, results again remained significant for both mortality (aHR: 1.01 [95% CI: 1.006-1.011];  $P < 0.001$ ) and the composite outcome (aHR: 1.01 [95% CI: 1.007-1.011];  $P < 0.001$ ) (Table 4).

When assessed by BAC score quartiles, there was a significantly higher risk in a consistently graded manner for both mortality and the composite outcome (Figure 3), even after adjustment for cardiovascular risk factors (Table 4). After excluding those on statin therapy, there were no significant differences (Table 4). After excluding those with baseline ASCVD, similar results were seen for mortality, though for the composite outcome, the graded association only reached statistical significance starting with the third quartile (Table 4).

Similar associations were also seen for HF and stroke, though results for MI (only 83 incident events) did not reach statistical significance (Supplemental Figure 2, Supplemental Tables 4 and 5) of BAC. Time points of 208 weeks and 468 weeks are indicative of approximately 4 years and 9 years, respectively.

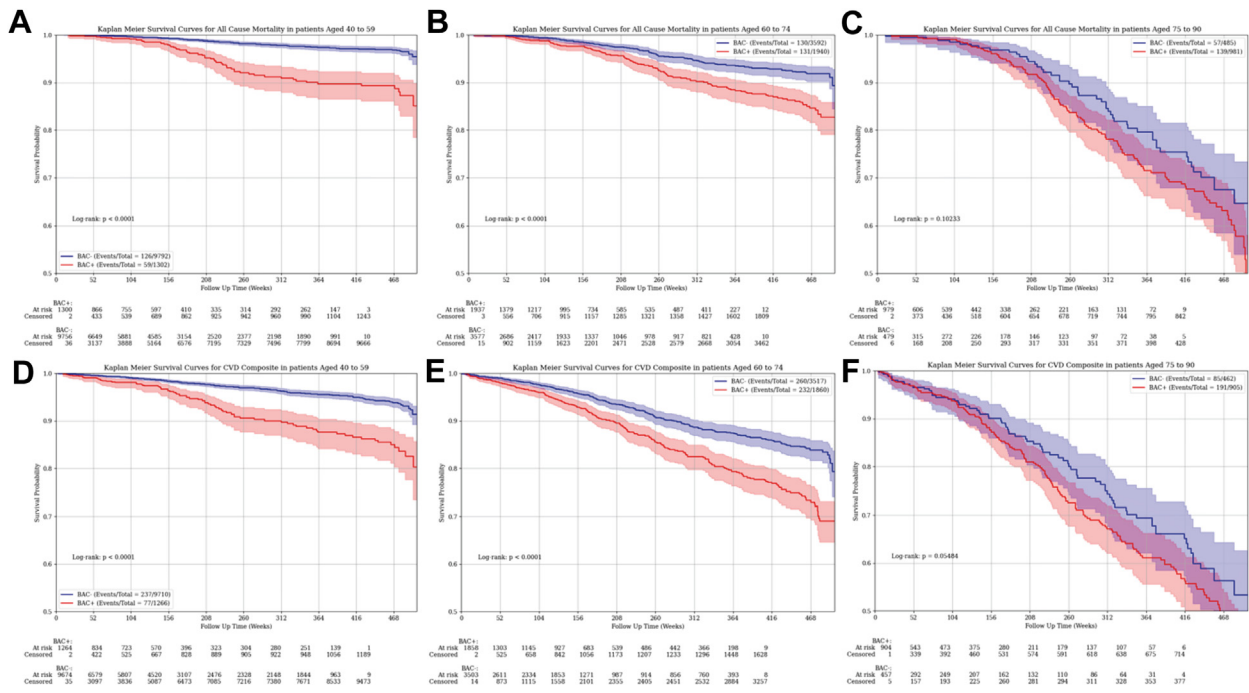
**BREAST ARTERIAL CALCIFICATION AND CLINICAL OUTCOMES AMONG SUBGROUP.** BAC prediction for mortality and the composite cardiovascular outcome significantly varied by age, systolic blood pressure,

total cholesterol, LDL cholesterol, smoking, and diabetes ( $P$  interaction terms  $< 0.001$  for each). Additionally, prediction significantly varied by history of CVD for mortality ( $P$  interaction term  $< 0.001$ ) and the composite outcome ( $P$  interaction term 0.009). While prediction also significantly varied by history of CKD for mortality ( $P$  interaction term 0.004), it did not for the composite outcome ( $P$  interaction term 0.16). Kaplan-Meier plots for mortality and the composite outcome stratified by age groups (Figure 4) demonstrate a significant separation of curves for women aged 40 to 59 and 60 to 74 years of age ( $P < 0.001$ ) but not for those aged 75 to 90 years (mortality,  $P = 0.10$ ; composite,  $P = 0.05$ ).

Forest plots demonstrating aHRs for outcomes by stratification of baseline characteristics are shown in Figure 5. When stratified by age groups, and after accounting for traditional risk factors, those in the youngest age group of 40 to 59 years had the highest residual risk associated with BAC (mortality: aHR: 1.51; 95% CI: 1.22-1.87; composite outcome: aHR: 1.52; 95% CI: 1.25-1.85). There remained significantly increased risk associated with BAC beyond traditional risk factors for women aged 60 to 74 years (mortality: aHR: 1.26; 95% CI: 1.06-1.50; composite outcome: aHR: 1.36; 95% CI: 1.18-1.58) but not among those



**FIGURE 4** Association of Breast Arterial Calcification and Mortality and Cardiovascular Composite Outcome Stratified by Age Groups



Risk for mortality (A to C) and the cardiovascular composite outcome (D to F) by breast arterial calcification (BAC) presence/absence. Risk for both outcomes significantly varied by BAC status among women aged 40 to 59 years (A and D) and those aged 60 to 74 years (B and E) ( $P < 0.001$  for each); however, among women aged 75 to 90 years (C and F), there was no significant difference in risk for either outcome by BAC status. The composite outcome included acute myocardial infarction, heart failure, stroke, and mortality. Time points of 208 weeks and 468 weeks are indicative of approximately 4 years and 9 years, respectively. BAC = breast arterial calcification; BAC+ = presence of BAC; BAC- = absence of BAC.

aged 75 to 90 years (mortality: aHR: 1.19; 95% CI: 0.91-1.54; composite outcome: aHR: 1.23; 95% CI: 0.98-1.55). When stratified by other baseline characteristics, including systolic blood pressure and diabetes, the association between BAC and future cardiovascular events remained robust, even after accounting for traditional risk factors (Figure 5).

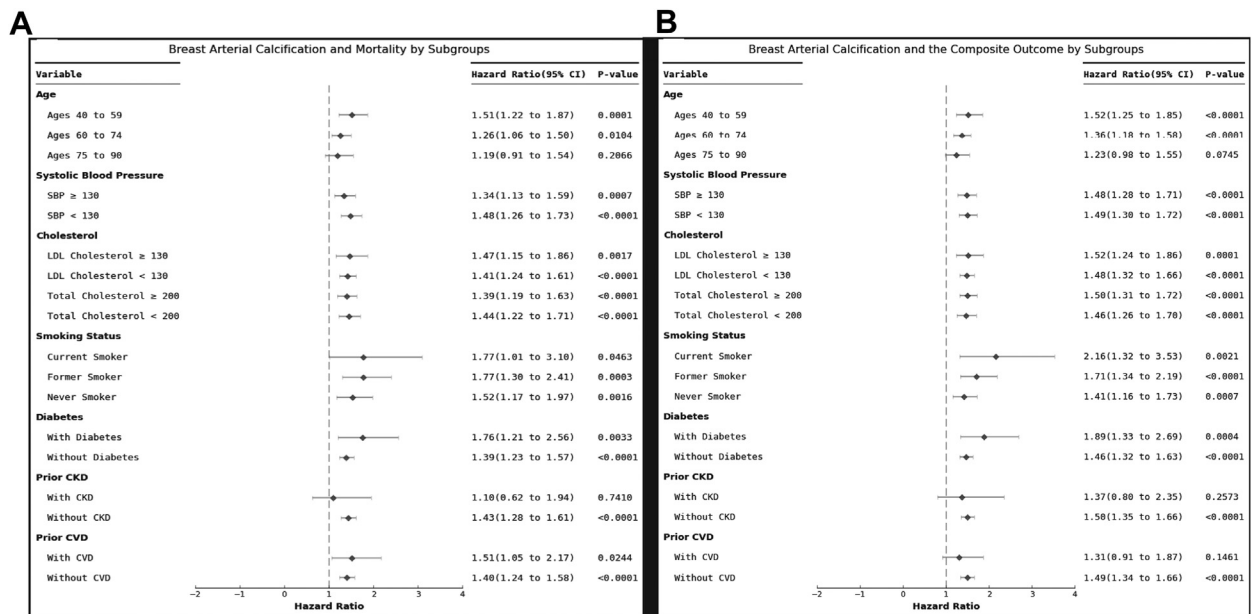
**DISCUSSION**

In this large, retrospective study, both the presence and quantity of BAC were significantly associated with all-cause mortality and the CVD composite outcome, even after adjusting for established cardiovascular risk factors. The prevalence of BAC was 23%, which constitutes a substantial proportion of women (mean age of 56.8 years) undergoing routine screening mammography. To our knowledge, this is

the first study to demonstrate a significant, independent relationship between a quantitative BAC score and all-cause mortality or a CVD composite outcome. Indeed, each 10-point increase as well as sequential quartiles of the BAC score were significantly associated with higher risk of mortality and adverse cardiovascular outcomes, highlighting the potential utility of BAC quantification for personalized risk assessment (Central Illustration).

Prior studies have evaluated the association of BAC using a binary or a semiquantitative approach (such as absence, slight, moderate, and severe intensity) with CVD outcomes.<sup>4,15</sup> In the present study, BAC was quantified using an automated method driven by a trained deep neural AI network, recently validated with high diagnostic performance.<sup>16</sup> Other machine learning techniques have been developed for BAC quantification, including a densitometry method, and

**FIGURE 5 Association of Breast Arterial Calcification and Mortality and Cardiovascular Composite Stratified by Baseline Characteristics**



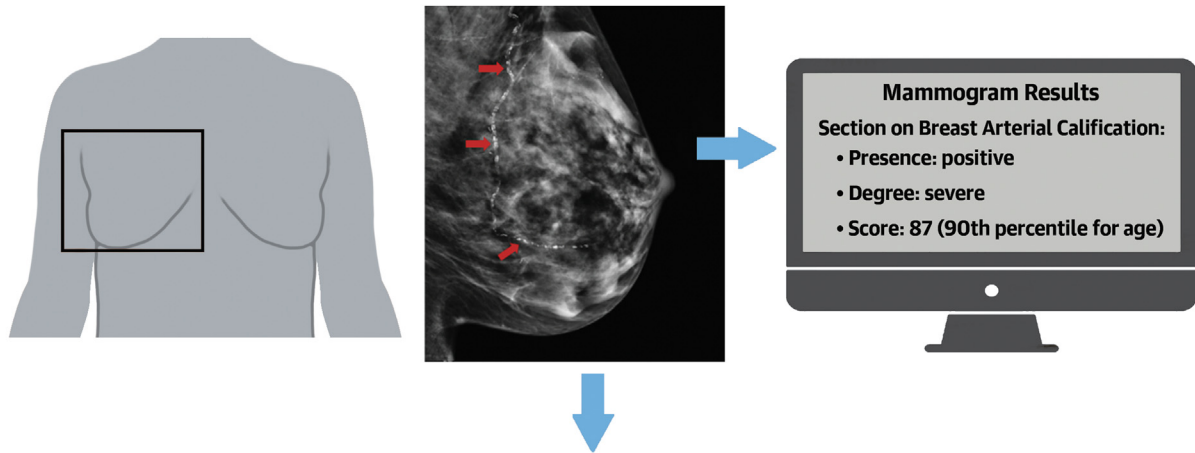
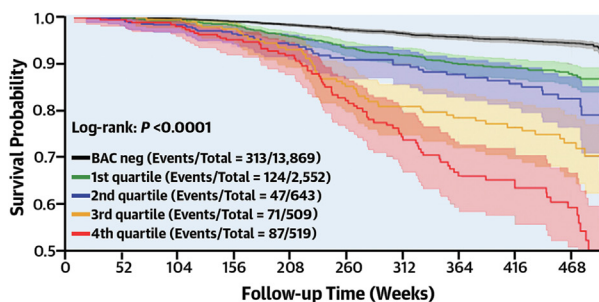
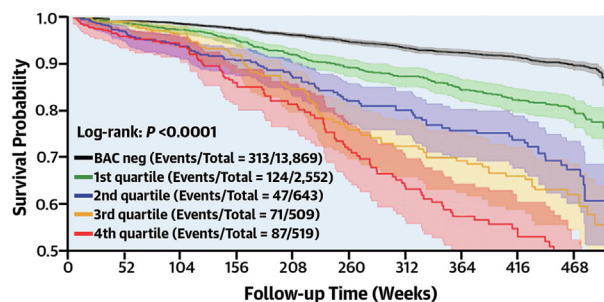
Adjusted HRs for (A) mortality and (B) the cardiovascular composite outcome by breast arterial calcification (BAC) presence vs absence are presented. The composite outcome included acute myocardial infarction, heart failure, stroke, and mortality. HRs presented were adjusted for age, race/ethnicity, systolic blood pressure, diastolic blood pressure, diabetes, total cholesterol, low-density lipoprotein cholesterol, smoking status, and history of cardiovascular disease, history of chronic kidney disease. BAC = breast arterial calcification; BAC+ = presence of BAC; BAC- = absence of BAC.

have been validated prospectively.<sup>17</sup> Such studies have assessed methods of BAC quantification, though await association with clinical outcomes.<sup>18-20</sup> The findings in our study support the efficacy of assessing both BAC presence and a quantitative BAC score to improve risk assessment for mortality and CVD outcomes in women undergoing screening mammography. With the advent of AI in medical imaging, automated, quantitative BAC assessment may facilitate seamless integration into clinical workflow and allow personalized risk assessment.

Importantly, this study also demonstrates the association of BAC with CVD outcomes and mortality even among subgroups not already known to be “high risk,” including younger women, nonsmokers, and those without diabetes, hypertension, hyperlipidemia, CKD, or known CVD. We found that BAC was most predictive of future events among those in the youngest age group of 40 to 59 years, though BAC was also an independent predictor among women ages 60 to 74 years. Our results are concordant with those of Minssen et al<sup>21</sup> who found that the diagnostic

accuracy (~84%) for BAC with CACs was the highest in patients under the age of 60 years. Results from this study and others suggest that BAC may develop at an earlier age than other traditional cardiovascular risk factors, and thus could serve as an early biomarker of underlying ASCVD risk.<sup>22</sup> These findings are important since they suggest that early risk stratification with BAC in younger women may help identify new candidates for lifestyle modification and preventative therapies and may ultimately help improve their outcomes. Moreover, we find that quantifying BAC allows us to better stratify risk with a graded association for both mortality and the composite outcome. Thus, simply reporting BAC presence or absence is insufficient and leaves valuable information underutilized.

Even with engagement from cardiologists and patients, the success of BAC implementation hinges on buy-in and education of the radiology community. A survey of the members of the Society of Breast Imaging found that 85% were aware of the association of BAC with CVD, but only 15% routinely included BAC

**CENTRAL ILLUSTRATION Association of Automated Breast Arterial Calcification Scores With Cardiovascular Outcomes and Mortality****Association Between Breast Arterial Calcification Scores Quartiles and Mortality and Cardiovascular Outcomes****Mortality**  
Cardiovascular Composite**Composite Outcomes**  
Myocardial Infarction, Heart Failure, Stroke, and Mortality

Allen TS, et al. JACC Adv. 2024;3(11):101283.

data on mammogram reports.<sup>6</sup> One of the major barriers to universal BAC reporting is the lack of radiology society guidelines on reporting and appropriate use of BAC.<sup>6,9</sup> Automated quantification and reporting methods for BAC will be critical to ensure that the current radiology workflow is not compromised.<sup>11</sup> Therefore, it will be important for cardiologists to advise and collaborate with the breast imaging community to develop clear BAC reporting guidelines and apply automated quantification tools into clinical workflow.

If the development and implementation of BAC can follow a similar pathway as CACs, BAC may someday

be used to improve CVD risk stratification beyond current tools such as the pooled cohort equation, the ASCVD Risk Score, and the Framingham Risk Score. Reclassification of risk will help identify those who will benefit from more aggressive lifestyle modifications and medical therapy (ie, statins, antihypertensives).

Recently, the MINERVA (Multiethnic Study of Breast Arterial Calcium Gradation and Cardiovascular Disease) demonstrated that presence of BAC conferred additional risk at every category (ie, low, medium, and high risk) of the pooled cohort equation.<sup>17</sup> While our study does not address CVD risk

discrimination modeling, we demonstrate that BAC can reliably be quantified using a novel AI algorithm and is independently associated with mortality and various CVD outcomes, which is a crucial and impactful step in this field. Future work will assess whether BAC scores can improve existing risk assessments for CVD outcomes, especially among women of intermediate ASCVD risk to guide initiation of preventive measures, such as statins, similar to CAC scores as suggested in the 2018 American College of Cardiology/American Heart Association Cholesterol Guidelines.<sup>23</sup> Ultimately, BAC scores may offer important and personalized risk stratification information, especially for younger women, without additional time, cost, and radiation.<sup>24</sup>

**STUDY LIMITATIONS.** First, the retrospective nature of the study does not prove causality. Although attempts at reducing confounding factors using multivariable models were used, residual risk remains. Second, clinical data including outcomes relied on the use of ICD-10 codes from EHR data extraction, which introduces the possibility of misclassification. Also, mortality information only included all-cause mortality, but data on cause-specific mortality including CVD-related death were not available. Third, although EHRs allow for large aggregation of data and study populations with ICD codes for outcome ascertainment, misclassification still occurs. Additionally, while EHRs are becoming increasingly connected across hospital systems, follow-up information is still lost, especially among those who received care in other health systems. Fourth, follow-up varied for women in the study due to use of a strict censoring date, loss to follow-up, and development of events. However, regarding the composite outcome, there were only 146 women with less than 1 year of follow-up, and by the ninth year, there were still 9,804 women with follow-up data available (out of the 16,638 assessed for loss to follow-up; 17,720 total eligible for the composite outcome analyses and 1,082 developed events). Fifth, data on menopausal status were not available. Sixth, most subjects in this study identified as White, making results most applicable to this population. Seventh, our study design adjusted

for history of several cardiovascular conditions based on ICD codes, including history of MI, CAD, HF, and PAD. However, we do not have available information on specific CV interventions, such as PCI, coronary artery bypass graft, or valve replacements. Lastly, this study shows the characteristics and outcomes from a single-center, albeit with a large cohort of women. Our ongoing work focuses on assessing the implications of BAC across more diverse populations to increase external validity of this potential screening tool and to identify additional areas to improve risk assessment.

## CONCLUSIONS

---

In this large, retrospective study, both BAC presence and quantity are significantly and independently associated with mortality and CVD outcomes. BAC appears to be especially predictive of CVD risk among younger women. Reporting of BAC was feasible and reliable using an automated AI algorithm, which could facilitate reporting uptake within the radiology community. Further studies are needed to determine the appropriate clinical response to BAC, and whether such a response can improve CVD outcomes in women.

## FUNDING SUPPORT AND AUTHOR DISCLOSURES

---

This research was in part funded by the National Heart, Lung, and Blood Institute T32 HL079891-11. Drs Bui, Nerlekar, Eghtedari, and Daniels have served as consultants to CureMetrix. Drs Mantey and Wang are employees of CureMetrix. All other authors have reported that they have no relationships relevant to the contents of this paper to disclose.

---

**ADDRESS FOR CORRESPONDENCE:** Dr Tara Shrout Allen, Division of Preventive Medicine, University of California, San Diego, 9500 Gilman Drive M/C 0965, La Jolla, California 92093-0965, USA. E-mail: [taallen@health.ucsd.edu](mailto:taallen@health.ucsd.edu). X handle: [@TaraAllenMD](https://twitter.com/TaraAllenMD). OR Dr Quan M. Bui, Division of Cardiovascular Medicine, University of California-San Diego, 9452 Medical Center Drive #7411, La Jolla, California 92037-7411, USA. E-mail: [q3bui@health.ucsd.edu](mailto:q3bui@health.ucsd.edu). X handle: [@QuanBuiMD](https://twitter.com/QuanBuiMD).

## PERSPECTIVES

**COMPETENCY IN MEDICAL KNOWLEDGE:** BAC on mammograms can be reliably quantified using a novel software based on an AI algorithm and is independently associated with an increased risk of mortality and CVD. After accounting for traditional cardiovascular risk factors, these associations held true when looking at BAC as a binary, quartile, and continuous variables. BAC was most predictive for mortality and CVD outcomes among younger women (aged 40-59 years), but still independently predictive in women aged 60 to 74 years.

**COMPETENCY IN PATIENT CARE:** Quantification of BAC from normal screening mammograms may improve personalized risk stratification for adverse outcomes and provide patients and clinicians with evidence to guide shared decision-making for preventive measures.

**TRANSLATIONAL OUTLOOK 1:** Our data provide support for the inclusion of BAC findings on mammogram reports.

**TRANSLATIONAL OUTLOOK 2:** Automated quantification tools and reporting methods of BAC will be critical to engagement of radiologists and implementation of reporting.

**TRANSLATIONAL OUTLOOK 3:** While additional studies are needed to determine the appropriate clinical response, the presence of BAC should at the minimum stimulate patient-provider conversations on lifestyle changes to mitigate cardiovascular risk, especially among younger women aged 40 to 59 years.

## REFERENCES

- Chadashvili T, Litmanovich D, Hall F, Slanetz PJ. Do breast arterial calcifications on mammography predict elevated risk of coronary artery disease? *Eur J Radiol.* 2016;85(6):1121-1124.
- McLenachan S, Camilleri F, Smith M, Newby DE, Williams MC. Breast arterial calcification on mammography and risk of coronary artery disease: a SCOT-HEART sub-study. *Clin Radiol.* 2019;74(6):421-428.
- Vogel B, Acevedo M, Appelman Y, et al. The Lancet Women and Cardiovascular Disease Commission: reducing the global burden by 2030. *Lancet.* 2021;397(10292):2385-2438.
- Bui QM, Daniels LB. A review of the role of breast arterial calcification for cardiovascular risk stratification in women. *Circulation.* 2019;139(8):1094-1101.
- Hendriks EJ, de Jong PA, van der Graaf Y, Mali WP, van der Schouw YT, Beulens JW. Breast arterial calcifications: a systematic review and meta-analysis of their determinants and their association with cardiovascular events. *Atherosclerosis.* 2015;239(1):11-20.
- Collado-Mesa F, Yepes MM, Arheart K. Breast arterial calcifications on mammography: a survey of practicing radiologists. *J Breast Imaging.* 2021;3:438-447.
- Trimboli RM, Capra D, Codari M, Cozzi A, Di Leo G, Sardaneli F. Breast arterial calcifications as a biomarker of cardiovascular risk: radiologists' awareness, reporting, and action. A survey among the EUSOBI members. *Eur Radiol.* 2021;31(2):958-966.
- Loberant N, Salamon V, Carmi N, Chernihovsky A. Prevalence and degree of breast arterial calcifications on mammography: a cross-sectional analysis. *J Clin Imaging Sci.* 2013;3:36.
- Margolies LR, Yip R, Hwang E, et al. Breast arterial calcification in the mammogram report: the patient perspective. *AJR Am J Roentgenol.* 2019;212(1):209-214.
- Iribarren C, Molloy S. Breast arterial calcification: a new marker of cardiovascular risk? *Curr Cardiovasc Risk Rep.* 2013;7(2):126-135.
- Yoon YE, Yun B, Kim KM, Suh JW. Breast arterial calcification: a potential biomarker for atherosclerotic cardiovascular disease risk? *Curr Atheroscler Rep.* 2021;23(5):21.
- Zaki-Metias KM, MacLean JJ, Mergo PA, Ogunde B, Al-Hameed M, Trivax CZ. Breast arterial calcifications: reporting preferences and impact on screening for coronary artery disease. *J Breast Imaging.* 2021;3(6):687-693.
- Sickles EA, D'Orsi CJ, Bassett LW, et al. Breast imaging reporting & data system (BI-RADS®) mammography. American College of Radiology. 2013. Accessed March 18, 2024. <https://www.acr.org/Clinical-Resources/Reporting-and-Data-Systems/Bi-Rads>
- Canadian Society of Breast Imaging. Canadian Society of Breast Imaging position statement on breast arterial calcification reporting on mammography. 2023. Accessed March 18, 2024. <https://csbi.ca/canadian-society-of-breast-imaging-position-statement-on-breast-arterial-calcification-reporting-on-mammography/>
- Oliveira EL, Freitas-Junior R, Afune-Neto A, Murta EF, Ferro JE, Melo AF. Vascular calcifications seen on mammography: an independent factor indicating coronary artery disease. *Clinics (Sao Paulo).* 2009;64(8):763-767.
- Goel V, Cameron W, Spear E, et al. Artificial intelligence software demonstrates high performance for breast arterial calcification detection on mammography. *Heart Lung Circ.* 2023;32:S383.
- Iribarren C, Chandra M, Lee C, et al. Breast arterial calcification: a novel cardiovascular risk enhancer among postmenopausal women. *Circ Cardiovasc Imaging.* 2022;15(3):e013526.
- Khan R, Masala GL. Detecting breast arterial calcifications in mammograms with transfer learning. *Electronics.* 2023;12(1):231.
- Molloy S, Xu T, Ducote J, Iribarren C. Quantification of breast arterial calcification using full field digital mammography. *Med Phys.* 2008;35(4):1428-1439.
- Guo X, O'Neill WC, Vey B, et al. SCU-Net: a deep learning method for segmentation and quantification of breast arterial calcifications on mammograms. *Med Phys.* 2021;48(10):5851-5861.
- Minssen L, Dao TH, Quang AV, et al. Breast arterial calcifications on mammography: a new

marker of cardiovascular risk in asymptomatic middle age women? *Eur Radiol*. 2022;32(7):4889-4897.

**22.** Allen TS, Bui QM, Sykes AV, et al. Quantitative and automated breast arterial calcification score is associated with traditional cardiovascular risk factors. *Circulation*. 2022;146(S1):A11669.

**23.** Grundy SM, Stone NJ, Bailey AL, et al. 2018 AHA/ACC/AACVPR/AAPA/ABC/ACPM/ADA/AGS/

APhA/ASPC/NLA/PCNA guideline on the management of blood cholesterol: a report of the American College of Cardiology/American Heart Association Task Force on clinical practice guidelines. *J Am Coll Cardiol*. 2019;73(24):e285-e350.

**24.** National Center for Health Statistics. *Health, United States, 2016: with chartbook on long-term trends in health*. Centers for Disease Control and Prevention. 2017.

---

**KEY WORDS** artificial intelligence, personalized risk stratification, prevention, subclinical atherosclerosis, women's health

---

**APPENDIX** For supplemental tables and figures, please see the online version of this paper.