

# UC Irvine

## UC Irvine Previously Published Works

### Title

Ice Sheets and Sea Level: Thinking Outside the Box

### Permalink

<https://escholarship.org/uc/item/0608b0w0>

### Journal

Surveys in Geophysics, 32(4-5)

### ISSN

0169-3298

### Authors

Van den Broeke, Michiel R  
Bamber, Jonathan  
Lenaerts, Jan  
[et al.](#)

### Publication Date

2011-09-01

### DOI

10.1007/s10712-011-9137-z

### Copyright Information

This work is made available under the terms of a Creative Commons Attribution License, available at

<https://creativecommons.org/licenses/by/4.0/>

Peer reviewed

# Ice Sheets and Sea Level: Thinking Outside the Box

Michiel R. Van den Broeke · Jonathan Bamber ·  
Jan Lenaerts · Eric Rignot

Received: 14 January 2011 / Accepted: 31 May 2011 / Published online: 22 June 2011  
© The Author(s) 2011. This article is published with open access at Springerlink.com

**Abstract** Until quite recently, the mass balance (MB) of the great ice sheets of Greenland and Antarctica was poorly known and often treated as a residual in the budget of oceanic mass and sea level change. Recent developments in regional climate modelling and remote sensing, especially altimetry, gravimetry and InSAR feature tracking, have enabled us to specifically resolve the ice sheet mass balance components at a near-annual timescale. The results reveal significant mass losses for both ice sheets, caused by the acceleration of marine-terminating glaciers in southeast, west and northwest Greenland and coastal West Antarctica, and increased run-off in Greenland. At the same time, the data show that interannual variability is very significant, masking the underlying trends.

**Keywords** Greenland · Antarctica · Mass balance · Sea level

---

Surveys of Geophysics, proceedings of the ISSI workshop on the Earth's Cryosphere and Sea Level Change, March 22–26, Bern, Switzerland.

---

M. R. Van den Broeke (✉) · J. Lenaerts  
Institute for Marine and Atmospheric Research, Utrecht University, Utrecht, The Netherlands  
e-mail: m.r.vandenbroeke@uu.nl

J. Lenaerts  
e-mail: j.lenaerts@uu.nl

J. Bamber  
Bristol Glaciology Centre, School of Geographical Sciences, University of Bristol, Bristol, UK  
e-mail: j.bamber@bristol.ac.uk

E. Rignot  
Department of Earth System Science, University of California, Irvine, CA, USA  
e-mail: erignot@uci.edu

E. Rignot  
Jet Propulsion Laboratory, Pasadena, CA, USA

## 1 Introduction

The large ice sheets of Antarctica (AIS) and Greenland (GrIS) represent the largest fresh-water sources on Earth, larger by two orders of magnitude than all other glaciers and ice caps combined, and sufficient to increase global sea level by about 70 m. Until quite recently, the mass balance (MB) of the AIS and GrIS and hence their contribution to sea level rise (SLR) was poorly known. Over the twentieth century, during which sea level rose by about  $1.7 \text{ mm year}^{-1}$ , their contribution to SLR was assumed to be small (Church et al. 2001).

For the period 1993–2003, based on satellite altimetry, Bindoff et al. (2007) estimated the rate of SLR to be  $3.1 \pm 0.4 \text{ mm year}^{-1}$ , i.e. almost twice the rate of the twentieth century. Thermal expansion of the upper ocean layers amounted to  $1.6 \pm 0.3 \text{ mm year}^{-1}$ . If for simplicity we neglect the contribution from other sources (e.g., deep ocean warming, storage of ground water and water in artificial basins), this leaves a land ice contribution of  $1.5 \pm 0.3 \text{ mm year}^{-1}$ . Of this,  $0.8 \pm 0.2 \text{ mm year}^{-1}$  is attributed to the melting of small glaciers and ice caps (GIC, Lemke et al. 2007). The residual of  $0.7 \pm 0.5 \text{ mm year}^{-1}$  is ascribed to mass loss from the AIS and GrIS.

For the more recent period 2003–2008, for which many more data are available, considerable uncertainties remain with respect to the oceanic mass budget (Willis et al. 2008; Nicholls and Cazenave 2010). Using altimetry and satellite gravimetry data from GRACE over the period 2003–2008, Cazenave et al. (2009) estimate the rate of SLR to be  $2.5 \pm 0.4 \text{ mm year}^{-1}$ , i.e. a 20% decrease compared to 1993–2003. This decrease was explained by a reduction in the contribution of thermal expansion, to  $0.4 \pm 0.1 \text{ mm year}^{-1}$  (Willis et al. 2008), indicating that the contribution of land ice to SLR had increased to  $2.1 \pm 0.3 \text{ mm year}^{-1}$ . Meier et al. (2007) estimate that GIC in 2006 contributed  $1.1 \pm 0.2 \text{ mm year}^{-1}$  to SLR. If we assume this value to be the representative for 2003–2008, this leaves a contribution of  $1.0 \pm 0.4 \text{ mm year}^{-1}$  for the AIS and GrIS. Both for GIC and the AIS/GrIS, this represents a  $\approx 40\%$  increase in mass loss compared to the period 1993–2003.

In spite of the insight it yields, it is unsatisfactory to treat the contribution of the AIS and GrIS to SLR as a residual. Firstly, all components of the sea level budget have large uncertainties, enhancing the uncertainty in the residual. Secondly, it is imperative that we partition the ice sheet mass loss into an ice dynamic (glacier acceleration) and surface (snowfall/run-off) component; only then will it be possible to model the physical processes responsible for ongoing mass losses and make predictions. Thirdly, we must resolve the temporal (interannual) variability of the AIS and GrIS mass balance, to explain interannual variations in SLR. In this survey, we present some recent advances and results in this field.

## 2 Methods to Determine Ice Sheet Mass Balance

The contributions of the AIS and GrIS to SLR depend on their mass balance (MB,  $\text{Gt year}^{-1}$ ), defined as the temporal change of ice sheet mass ( $\partial M/\partial t$ ). Neglecting basal melting of grounded ice, MB is governed by the difference between surface mass balance (SMB) and the ice discharge across the grounding line, including the effects of grounding line migration (D):

$$MB = \partial M/\partial t = SMB - D \quad (1)$$

Surface mass balance (SMB,  $\text{Gt year}^{-1}$ ) is the sum of accumulation by precipitation (snow and rain) and ablation by sublimation and run-off. Run-off, in turn, is determined by

the liquid water balance (LWB), the sum of sources (water vapour condensation, rainfall and ice and snow melt) and sinks (refreezing and capillary retention) of liquid water. Recent developments in remote sensing and regional climate modelling offer three methods to estimate ice sheet MB, each with their advantages and disadvantages. These three methods are briefly discussed below.

## 2.1 Satellite Altimetry

Remotely sensed elevation changes from radar/laser altimetry yield changes in ice sheet volume, i.e. this technique does not discriminate between the different processes responsible for mass loss. Moreover, converting volume to mass changes can be problematic, because they are caused by changes in ice dynamics and firn densification rate as well as decadal changes in accumulation, the latter representing a major source for short-term ice sheet elevation changes (McConnell et al. 2000; Helsen et al. 2008). These processes cannot be isolated based on elevation change measurements alone, and a separate estimate must be made for firn densification and accumulation variability. This requires a firn densification model forced by high-resolution (in time and space) atmospheric re-analyses, which can only be done for the period with reliable atmospheric forcing data, i.e. after 1978 in Greenland and 1980 in Antarctica (Van de Berg et al. 2005). This excludes an assessment of the role of longer time scale variations in snowfall, which are known to exist. Radar altimeters have a penetration depth in snow that depends on (time varying) snow structure and density (Thomas et al. 2008). Until the launch of Cryosat-2 in 2010, the narrow, fast flowing outlet glaciers, which are expected to react most rapidly to environmental changes, were not adequately resolved. The laser altimeter onboard ICESat captures changes in these glaciers in detail (Pritchard et al. 2009), but unfortunately has limited coverage and life span and is sensitive to clouds, prohibiting continuous time series in high-accumulation (i.e. frequently overcast) areas.

## 2.2 Satellite Gravimetry

This method uses data of the Gravity Recovery and Climate Experiment (GRACE) satellites. GRACE has caused a small revolution in climate and sea level research by showing beyond a doubt that the large ice sheets are losing mass (Velicogna and Wahr 2006a, b; Wouters et al. 2008; Velicogna 2009; Chen et al. 2009). Moreover, the method is completely independent of the other two methods, making it a suitable verification and calibration tool. Drawbacks are that no distinction is made between the different processes responsible for mass loss, and the uncertainties arising from the short time period over which the trends have been calculated (2003–2009, i.e. 7 years). Moreover, multiple corrections must be applied to obtain mass changes, each introducing additional uncertainties. In Antarctica, the most important correction is that for upward motion of the Earth's crust following deglaciation (Glacial Isostatic Adjustment or GIA). The GIA correction is relatively small over Greenland, for which good agreement with the mass budget method is found (Van den Broeke et al. 2009) but large and relatively poorly constrained over Antarctica (Riva et al. 2009).

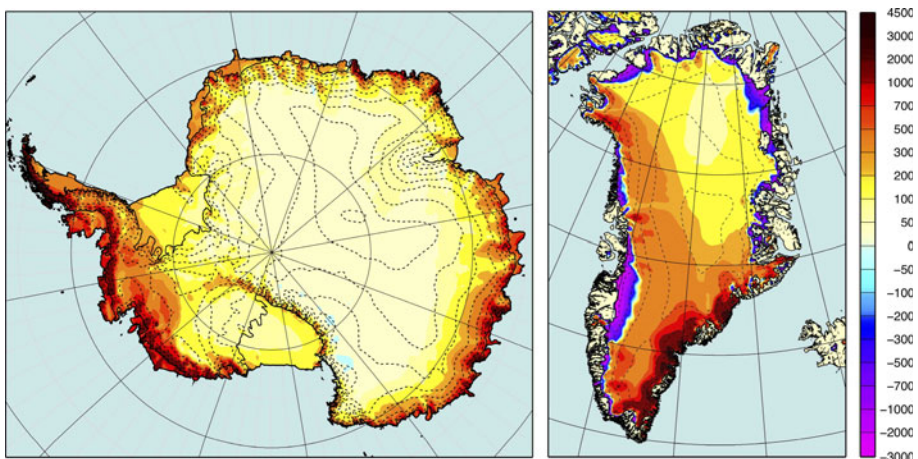
## 2.3 The Mass Budget Method

This method relies on an accurate determination of mass input (SMB) and mass output (D). The major advantage of the mass budget method is that individual MB components (SMB,

LWB and D) are quantified, per drainage basin and year, providing insight into the physical processes that determine ice sheet mass changes. Because MB represents the difference between two large terms (SMB and D), the method is very sensitive to uncertainties in the individual components. This prohibited its use over the full ice sheet surface until recently. Using remotely sensed ice velocities/thicknesses and elevation data, and improved SMB fields, ice sheet-wide MB assessments using the mass budget method are now feasible (Rignot and Kanagaratnam 2006; Rignot et al. 2008a, b; Van den Broeke et al. 2009; Rignot et al. 2011).

In addition to SMB compilations based on spatial interpolation of observations (Arthern et al. 2006; Bales et al. 2009; Burgess et al. 2010), regional climate models (RCMs) have recently also started to provide reliable SMB fields (Van de Berg, et al. 2006; Fettweis 2007; Ettema et al. 2009). RCMs explicitly resolve physical atmospheric processes leading to snowfall and melt, and run at higher resolution than global models, typically 10–30 km vs. 100–300 km. As an example, Fig. 1 shows recent results from the Regional Atmospheric Climate Model (RACMO2) for Antarctic and Greenland SMB. These fields represent the average SMB for a 21-year period (1989–2009), for which the regional model was forced at the boundaries by the European Centre for Medium-range Weather Forecasts interim re-analysis (ERA-Interim). These modelled SMB fields correlate very well with in situ observations from firn cores, stakes and snow pits (correlation coefficient  $r = 0.87$  for the AIS, 0.95 for the GrIS).

Figure 1 shows that both ice sheets have coastal areas that are significantly wetter than the ice sheet interior. Coastal West Antarctica experiences accumulation rates in excess of  $1500 \text{ kg m}^{-2} \text{ year}^{-1}$ , while peak values in excess of  $3000 \text{ kg m}^{-2} \text{ year}^{-1}$  occur in the western Antarctic Peninsula and coastal southeast Greenland. In contrast, northeast Greenland receives less than  $100 \text{ kg m}^{-2} \text{ year}^{-1}$  and interior East Antarctica even less than  $50 \text{ kg m}^{-2} \text{ year}^{-1}$ . Due to strong summertime melt and run-off, Greenland has a well-defined marginal ablation zone, which is more than 100 km wide in the southwest, where ablation up to  $3000 \text{ kg m}^{-2} \text{ year}^{-1}$  occurs. Ablation in Antarctica is limited in area and magnitude. It is generally not caused by run-off, but rather by (snowdrift) sublimation and



**Fig. 1** Surface mass balance (SMB, 1989–2009) from RACMO2 of the AIS (left) and the GrIS (right) in  $\text{kg m}^{-2} \text{ year}^{-1}$ . Contour levels (dashed) are shown every 500 m

erosion, limiting ablation to regions where these processes are active (Van den Broeke et al. 2006b; Lenaerts et al. 2010). Because observations are very sparse in coastal, high-accumulation/high-ablation areas (Van den Broeke et al. 2006a), compilations that rely on interpolation of available observations tend to under/overestimate SMB in coastal Antarctica/Greenland and therewith ice sheet SMB. This favours the use of modelled ('dynamically downscaled') SMB fields in the mass budget method. The SMB numbers presented in this paper refer to the continuous, grounded ice sheet.

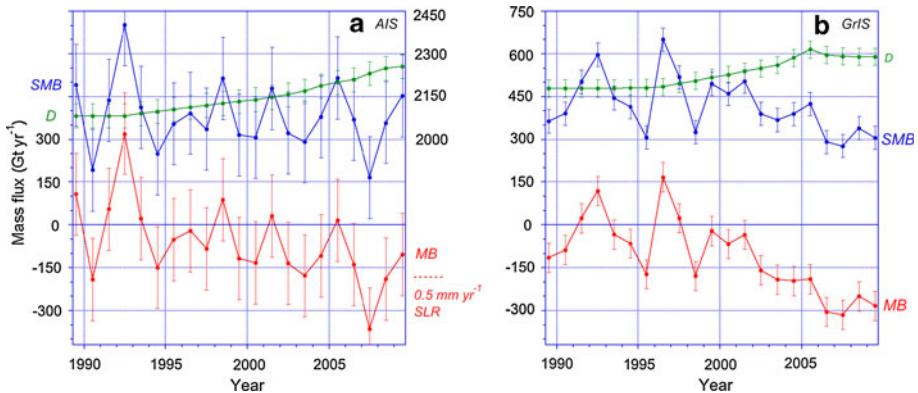
Ice discharge (D) is quantified using feature tracking from satellite imaging radar to obtain the flow speed of the narrow glaciers through the flux gates at the ice sheet grounding line (Rignot et al. 2008a, b). Satellite altimetry is used to accurately delineate the ice drainage basins as well as to obtain the elevation/thickness of the outlet glacier at the grounding line (Bamber et al. 2001, 2010). In Antarctica, where a floatation criterion is used to determine ice thickness at the grounding line for most glaciers (Rignot et al. 2008b), a correction must be applied for the density of the firn mantle that covers the ice. This can be achieved by using output of a regional atmospheric climate model in combination with a steady-state firn compaction model (Van den Broeke 2008; Van den Broeke et al. 2008). For the GrIS, where glacier tongues experience significant ablation in summer, this correction is less important. Finally, if the grounding line is migrating, as is currently the case in coastal West Antarctica, this represents a mass flux that must also be estimated (Rignot et al. 2011).

### 3 Application of the Mass Budget Method to the AIS and GrIS

Owing to the availability of improved SMB and D estimates, recent studies have applied the mass budget method to the AIS (Fig. 2a) and GrIS (Fig. 2b) for the period 1989–2009. Before 1980, re-analysis products are unreliable in the SH, and no SMB estimates are available for the AIS prior to that year (Van de Berg et al. 2005), while no accurate discharge observations are currently available before 1992 (Rignot et al. 2011). The SMB of the AIS does not show a significant trend, in line with earlier studies (Monaghan et al. 2006). A notable feature in Fig. 2a is the large interannual variability in SMB, with year-to-year changes as large as  $300 \text{ Gt year}^{-1}$ . However, the standard deviation of  $121 \text{ Gt year}^{-1}$  represents just 6% of the 1989–2009 average SMB over the grounded ice sheet ( $2083 \text{ Gt year}^{-1}$ ); this demonstrates that, even though the *relative* interannual variability is small, the variability in terms of *absolute mass* is very significant for the AIS, obscuring mass trends.

Estimates of total AIS discharge (D) are available for the years 1992, 1996, 2000, 2003, 2004 and annually since 2006 and include the estimated effect of inland migration of the grounding line in coastal West Antarctica (Rignot et al. 2011). For the years without discharge data, a linear interpolation between data points was applied, assuming slowly changing D. Here, we assume constant discharge between 1989 and 1992. The increase in discharge is mainly caused by the acceleration of glaciers in coastal West Antarctica, which still continues (Rignot 2008), and acceleration of glaciers in the Antarctic Peninsula mainly prior to 2005 (Pritchard and Vaughan 2007). Compared to 1992, discharge from the AIS has increased by  $173 \text{ Gt year}^{-1}$  or 8% in 2009; as a result, MB has been persistently negative since 1994, except for 3 years with high snowfall (1998, 2001 and 2005).

For the GrIS, reliable SMB time series date back as far as 1958, owing to much better observational coverage in the northern hemisphere (Ettema et al. 2009). However, reliable estimates of D are only available for years 1992, 1996, 2000 and annually since 2004



**Fig. 2** Time series of surface mass balance (SMB, blue), solid ice discharge (D, green) and ice sheet mass balance (MB, red) in  $\text{Gt year}^{-1}$ . For the AIS (left), scale for SMB and D has been shifted (right ordinate) to allow plotting on the same scale as for the GrIS (right). D is assumed constant before 1992

(Rignot et al. 2011). Both SMB and D time series are displayed in Fig. 2b for the period 1989–2009, once more assuming constant discharge between 1989 and 1992 and using a linear interpolation to obtain D data between years with observations. Unlike in Antarctica, where run-off is negligible, interannual SMB variability for the GrIS is also for an important part caused by run-off variability, which is anti-correlated with accumulation (little winter snowfall causes larger summer ablation through the lower albedo of bare ice); year-to-year variations in SMB can therefore be as large as  $400 \text{ Gt year}^{-1}$ . The average standard deviation is  $100 \text{ Gt year}^{-1}$ , 24% of the average SMB ( $417 \text{ Gt year}^{-1}$ ). Another contrast to the AIS is that the SMB shows a negative trend since about 2000, following atmospheric warming and increased run-off since the early 1990s (Hanna et al. 2008; Van den Broeke et al. 2009). In combination with an increase in D since about 1996, owing to glacier acceleration in southeast, west and northwest Greenland (Joughin et al. 2004; Howat et al. 2005, 2007; Rignot and Kanagaratnam 2006; Khan et al. 2010), this has resulted in a persistently negative MB since 1999.

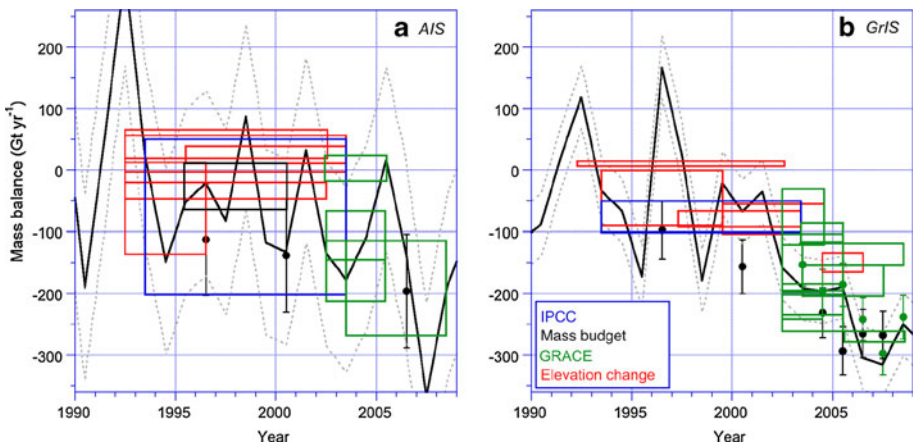
#### 4 Discussion and Conclusions

We can compare our ice sheet mass balance time series with results based on SLR residuals mentioned in the Introduction. The average 2003–2008 MB of the AIS is  $-161 \pm 150 \text{ Gt year}^{-1}$  and that of the GrIS  $-241 \pm 51 \text{ Gt year}^{-1}$ . This represents an average contribution of the ice sheets to SLR of  $1.1 \pm 0.4 \text{ mm year}^{-1}$  over that six-year period, which agrees well with the estimate based on SLR residuals ( $1.0 \pm 0.5 \text{ mm year}^{-1}$ ). The mass loss over this period is partitioned 40%/60% between the AIS and the GrIS. Acceleration of outlet glaciers is the only source of mass loss in Antarctica, and increased run-off (decreased SMB) is equally important in Greenland. For the period 1993–2003, the MB summed for both ice sheets averages  $-133 \pm 158 \text{ Gt year}^{-1}$ , equivalent to a SLR of  $0.4 \pm 0.4 \text{ mm year}^{-1}$ , which agrees within error bars with the SLR residual of  $0.7 \pm 0.5 \text{ mm year}^{-1}$ .

As important as time-averaged MB is its interannual variability. Figure 3 compares the MB time series of the AIS (Fig. 3a) and GrIS (Fig. 3b) with a (non-exhaustive) compilation of recent MB estimates using satellite altimetry (red), the mass budget method

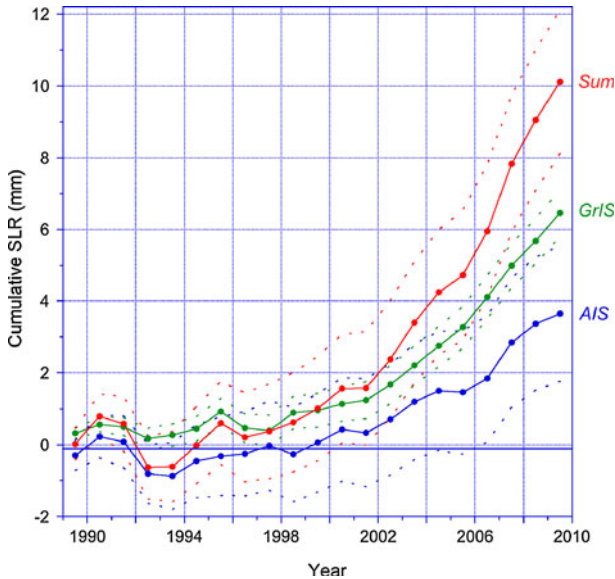
(black) and GRACE (green). Until recently, review articles on ice sheet mass balance listed results of the above methods in a regular table (Rignot and Thomas 2002; Shepherd and Wingham 2007), but since the launch of GRACE in 2002, the number of mass balance estimates has grown rapidly. That is why the box plot has taken over as the preferred method to present estimates of ice sheet mass balance (Cazenave 2006). The box colour usually denotes the method used; the horizontal dimension covers the time period over which mass balance has been averaged, and the vertical dimension represents the uncertainty. If two boxes cover the same period but do not vertically overlap, the uncertainty has obviously been underestimated in one or both studies. The blue boxes represent 1993–2003 estimates as published in IPCC AR4 (Bindoff et al. 2007). Most MB estimates based on altimetry date from before 2003, and are based on ERS1/2 radar altimetry data, the exception being recent studies based on laser altimetry from GLAS onboard ICESat (2003–2009). Gravimetry estimates start in early 2003, following the launch of the GRACE satellites.

For both ice sheets, the general picture that emerges from the boxes in Fig. 3 is that of near balance to modest mass losses in the 1990s, increasing to more substantial mass losses after 2000. Annual MB values from Fig. 2 are plotted as black dashed lines. In general, these curves nicely connect the various boxes, confirming many of the earlier studies and partly explaining the differences among studies in terms of interannual MB variability. The black lines show that MB can vary substantially within a single box, which means that the choice of the averaging period is critical for the obtained average MB value and is not necessarily representative for a longer period. The box plot has the undesirable characteristic to hide the interannual variability, providing a too static picture of ice sheet mass balance. To do justice to the important interannual variability in MB, we suggest either to



**Fig. 3** Recent mass balance estimates ( $\text{Gt yr}^{-1}$ ) for the AIS (left) and the GrIS (right), based on altimetry (red), GRACE (green) and the mass budget method (black). MB data from Fig. 2 are plotted as black dashed lines with uncertainty margins. Data sources AIS (left): Wingham et al. (1998); Rignot and Thomas (2002); Davis et al. (2005); Zwally et al. (2005); Velicogna and Wahr (2006b); Ramillien et al. (2006); Wingham et al. (2006); Chen et al. (2006b); Bindoff et al. (2007); Helsen et al. (2008); Rignot et al. (2008b); Chen et al. (2009); Data sources GrIS (right): Krabill et al. (2000); Krabill et al. (2004); Velicogna and Wahr (2005); Thomas et al. (2006); Rignot and Kanagaratnam (2006); Ramillien et al. (2006); Chen et al. (2006a); Luthke et al. (2006); Bindoff et al. (2007); Wouters et al. (2008); Rignot et al. (2008a); Cazenave et al. (2009); Velicogna (2009); Schrama and Wouters (2011)





**Fig. 4** Cumulative sea level rise contributions (1989–2009) from the AIS (*blue*) and the GrIS (*green*) and their sum (*red*). *Dashed lines* indicate uncertainty margins

calculate averages over a sufficiently long period (>10 years) or, better, to try to present MB at an annual resolution.

The latter is also the preferred option when closing the sea level budget. For example, our results show that the combined contribution of the AIS and GrIS to SLR was negative in 1992 (−1.2 mm) and 1996 (−0.4 mm), while in, e.g., 2007 it was positive and very large at almost 2 mm. Fig. 4 shows the cumulative contributions of the AIS and GrIS to SLR since 1989. Although the long-term trend is clearly positive and appears to be accelerating (Rignot et al. 2011), the year-to-year contributions to cumulative SLR are very variable. Taking these interannual variations into account will further help to explain and close the observed rate of global SLR.

**Open Access** This article is distributed under the terms of the Creative Commons Attribution Noncommercial License which permits any noncommercial use, distribution, and reproduction in any medium, provided the original author(s) and source are credited.

## References

- Arthern RJ, Winebrenner DP, Vaughan DG (2006) Antarctic snow accumulation mapped using polarization of 4.3-cm wavelength microwave emission. *J Geophys Res* 111:D06107. doi:[10.1029/2004JD005667](https://doi.org/10.1029/2004JD005667)
- Bales RC, Guo Q, Shen D, McConnell JR, Du G, Burkhardt JF, Spikes VB, Hanna E, Cappelen J (2009) Annual accumulation for Greenland updated using ice core data developed during 2000–2006 and analysis of daily coastal meteorological data. *J Geophys Res* 114:D06116. doi:[10.1029/2008JD011208](https://doi.org/10.1029/2008JD011208)
- Bamber JL, Ekholm S, Krabill WB (2001) A new, high-resolution digital elevation model of Greenland fully validated with airborne altimeter data. *J Geophys Res* 106:6733–6745
- Bamber JL, Gomez-Dans JL, Griggs JA (2010) A new 1 km digital elevation model of the Antarctic derived from combined satellite radar and laser data, Part 1: data and methods. *The Cryosphere* 3:101–111
- Bindoff NL, Willebrand J, Artale V, Cazenave A, Gregory JM, Gulev S, Hanawa K, Le Quéré KC, Levitus S, Nojiri Y, Shum CK, Talley LD, Unnikrishnan AS (2007) Observations: oceanic climate change and

- sea level. In: Solomon S, Qin D, Manning M, Chen Z, Marquis M, Averyt KB, Tignor M, Miller HL (eds) *Climate change 2007: the physical science basis. contribution of working group I to the fourth assessment report of the intergovernmental panel on climate change*, Cambridge University Press, United Kingdom and New York, USA
- Burgess EW, Forster RR, Box JE, Smith LC, Bromwich DH (2010) Greenland ice sheet annually-resolved accumulation rates (1958–2007), a spatially calibrated model. *J Geophys Res* 115:F02004. doi: [10.1029/2009JF001293](https://doi.org/10.1029/2009JF001293)
- Cazenave A (2006) How fast are the ice sheets melting? *Science* 314:1250–1252
- Cazenave A, Dominh K, Guinehut S, Berthier E, Llovel W, Ramillien G, Ablain M, Larnicol G (2009) Sea level budget over 2003–2008: a re-evaluation from GRACE space gravimetry, satellite altimetry and Argo. *Glob Planet Change* 65:83–88. doi:[10.1016/j.gloplacha.2008.10.004](https://doi.org/10.1016/j.gloplacha.2008.10.004)
- Chen JL, Wilson CR, Tapley BD (2006a) Satellite gravity measurements confirm accelerated melting of Greenland ice sheet. *Science* 313:1958. doi:[10.1126/science.1129007](https://doi.org/10.1126/science.1129007)
- Chen JL, Wilson CR, Blankenship DD, Tapley BD (2006b) Antarctic mass rates from GRACE. *Geophys Res Lett* 33:L11502. doi:[10.1029/2006GL026369](https://doi.org/10.1029/2006GL026369)
- Chen JL, Wilson CR, Blankenship D, Tapley BD (2009) Accelerated Antarctic ice loss from satellite gravity measurements. *Nature Geosci* 2:859–862
- Church JA, Gregory JM, Huybrechts P, Kuhn M, Lambeck K, Nhuan MT, Qin D, Woodworth PL (2001) Changes in sea level. In: Houghton JT, Ding Y, Griggs DJ, Noguer M, Van der Linden PJ, Xiaou D (eds) *Climate change 2001: the scientific basis*. Cambridge University Press, Cambridge and New York, pp 639–694
- Davis CH, Li Y, McConnell JR, Frey MM, Hanna E (2005) Snowfall-driven growth in East Antarctic ice sheet mitigates recent sea-level rise. *Science* 308:1898–1901. [10.1126/science.1110662](https://doi.org/10.1126/science.1110662)
- Ettema J, Van den Broeke MR, van Meijgaard E, van de Berg WJ, Bamber JL, Box JE, Bales RC (2009) Higher surface mass balance of the Greenland ice sheet revealed by high-resolution climate modeling. *Geophys Res Lett* 36:L12501. doi:[10.1029/2009GL038110](https://doi.org/10.1029/2009GL038110)
- Fettweis X (2007) Reconstruction of the 1979–2006 Greenland ice sheet surface mass balance using the regional climate model MAR. *The Cryosphere* 1:21–40
- Hanna E, Huybrechts P, Steffen K, Cappelen J, Huff R, Shuman C, Irvine-Fynn T, Wise S, Griffiths M (2008) Increased runoff from melt from the Greenland ice sheet: a response to global warming. *J Climate* 21:331–341
- Helsen MM, van den Broeke MR, van de Wal RSW, van de Berg WJ, van Meijgaard E, Davis CH, Li Y, Goodwin I (2008) Elevation changes in Antarctica mainly determined by accumulation variability. *Science* 320:1626–1629. doi: [10.1126/science.1153894](https://doi.org/10.1126/science.1153894), 1626–1629
- Howat IM, Joughin I, Tulaczyk S, Gogineni S (2005) Rapid retreat and acceleration of Helheim Glacier, east Greenland. *Geophys Res Lett* 32:L22502. doi:[10.1029/2005GL024737](https://doi.org/10.1029/2005GL024737)
- Howat IM, Joughin I, Scambos T (2007) Rapid changes in ice discharge from Greenland outlet glaciers. *Science* 315:1559. doi:[10.1126/science.1138478](https://doi.org/10.1126/science.1138478)
- Joughin I, Abdalati W, Fahnestock M (2004) Large fluctuations in speed on Greenland's Jakobshavn Isbrae glacier. *Nature* 432:608–610
- Khan SA, Wahr J, Bevis M, Velicogna I, Kendrick E (2010) Spread of ice mass loss into northwest Greenland observed by GRACE and GPS. *Geophys Res Lett* 37:L06501. doi:[10.1029/2010GL04460.10](https://doi.org/10.1029/2010GL04460.10)
- Krabill W, Abdalati W, Frederick E, Manizade S, Martin C, Sonntag J, Swift R, Thomas R, Wright W, Yungel J (2000) Greenland ice sheet: high-elevation balance and peripheral thinning. *Science* 289:428–429
- Krabill W, Hanna E, Huybrechts P, Abdalati W, Cappelen J, Csatho B, Frederick E, Manizade S, Martin C, Sonntag J, Swift R, Thomas R, Yungel J (2004) Greenland ice sheet: increased coastal thinning. *Geophys Res Lett* 31:L24402. doi:[10.1029/2004GL021533](https://doi.org/10.1029/2004GL021533)
- Lemke P, Ren J, Alley RB, Allison I, Carrasco J, Flato G, Fujii Y, Kaser G, Mote P, Thomas RH, Zhang T (2007) Observations: changes in snow, ice and frozen ground. In: Solomon S, Qin D, Manning M, Chen Z, Marquis M, Averyt KB, Tignor M, Miller HL (eds) *Climate change 2007: the physical science basis. contribution of working group I to the fourth assessment report of the intergovernmental panel on climate change*, Cambridge University Press, United Kingdom and New York, USA
- Lenaerts JTM, van den Broeke MR, Déry SJ, König-Langlo G, Ettema J, Kuipers Munneke P (2010) Modelling snowdrift sublimation on an Antarctic ice shelf. *The Cryosphere* 4:179–190
- Luthke S, Zwally H, Abdalati W, Rowlands D, Ray R, Nerem R, Lemoine F, McCarthy J, Chinn D (2006) Recent Greenland mass loss by drainage system from satellite gravity observations. *Science* 314:1286–1289

- McConnell JR, Arthern RJ, Mosley-Thompson E, Davis CH, Bales RC, Thomas R, Burkhart JF, Kyne JD (2000) Changes in Greenland ice sheet elevation attributed primarily to snow accumulation variability. *Nature* 406:877–879
- Meier MF, Dyurgerov MB, Rick UK, O'Neil S, Pfeffer WT, Anderson RS, Anderson SP, Glazovsky AF (2007) Glaciers dominate eustatic sea-level rise in the twenty-first century. *Science* 317:1064–1067
- Monaghan AJ, Bromwich DH, Fogt RL, Wang S-H, Mayewski PA, Dixon DA, Ekaykin A, Frezzotti M, Goodwin I, Isaksson E, Kaspari SD, Morgan VI, Oerter H, Van Ommen TD, Van der Veen CJ, Wen J (2006) Insignificant change in Antarctic snowfall since the international geophysical year. *Science* 313:827–831
- Nicholls RJ, Cazenave A (2010) Sea-level rise and its impact on coastal zones. *Science* 328:1517–1520
- Pritchard HD, Vaughan DG (2007) Widespread acceleration of tidewater glaciers on the Antarctic Peninsula. *J Geophys Res* 112:F03S29. doi:[10.1029/2006JF000597](https://doi.org/10.1029/2006JF000597)
- Pritchard HD, Arthern RJ, Vaughan DG, Edwards LA (2009) Extensive dynamic thinning on the margins of the Greenland and Antarctic ice sheets. *Nature* 461:971–975
- Ramillien G, Lombard A, Cazenave A, Ivins ER, Llubes M, Remy F, Biancale R (2006) Interannual variations of the mass balance of the Antarctica and Greenland ice sheets from GRACE. *Global Planet Change* 53:198–208
- Rignot E (2008) Changes in West Antarctic ice stream dynamics observed with ALOS PALSAR data. *Geophys Res Lett* 35:L12505. doi:[10.1029/2008GL033365](https://doi.org/10.1029/2008GL033365)
- Rignot E, Kanagaratnam P (2006) Changes in the velocity structure of the Greenland ice sheet. *Science* 311:986–990
- Rignot E, Thomas RH (2002) Mass balance of Polar ice sheets. *Science* 297:1502–1506
- Rignot E, Box JE, Burgess E, Hanna E (2008a) Mass balance of the Greenland ice sheet from 1958 to 2007. *Geophys Res Lett* 35:L20502. doi:[10.1029/2008GL035417](https://doi.org/10.1029/2008GL035417)
- Rignot E, Bamber JL, van den Broeke MR, Davis C, Li Y, van de Berg WJ, van Meijgaard E (2008b) Recent Antarctic mass loss from radar interferometry and regional climate modeling. *Nature Geosci* 2:106–110
- Rignot E, Velicogna I, van den Broeke MR, Monaghan A, Lenaerts J (2011) Acceleration of the contribution of the Greenland and Antarctic ice sheets to sea level rise. *Geophys Res Lett* 38:L05503. doi:[10.1029/2011GL046583](https://doi.org/10.1029/2011GL046583)
- Riva REM, Gunter BC, Urban TJ, Vermeersen BLA, Lindenbergh RC, Helsen MM, Bamber JL, van de Wal RSW, van den Broeke MR, Schutz BE (2009) Glacial isostatic adjustment over Antarctica from combined ICESat and GRACE satellite data. *Earth Planet Sci Lett* 288:516–523
- Schrma EJO, Wouters B (2011) Revisiting Greenland ice sheet mass loss observed by GRACE. *J Geophys Res* 116:B02407. doi:[10.1029/2009JB006847](https://doi.org/10.1029/2009JB006847)
- Shepherd A, Wingham D (2007) Recent sea-level contributions of the Antarctic and Greenland ice sheets. *Science* 315:1529–1532
- Thomas R, Frederick E, Krabill W, Manizade S, Martin C (2006) Progressive increase in ice loss from Greenland. *Geophys Res Lett*, L10503
- Thomas R, Davis C, Frederick E, Krabill W, Li Y, Manizade S, Martin C (2008) A comparison of Greenland ice-sheet volume changes derived from altimetry measurements. *J Glaciol* 54: 203–212. 11
- Van de Berg WJ, van den Broeke MR, Reijmer CH, van Meijgaard E (2005) Characteristics of the Antarctic surface mass balance, 1958–2002, using a regional atmospheric climate model. *Ann Glaciol* 41:97–104
- Van den Broeke MR (2008) Depth and density of the Antarctic firn layer. *Arct Antarct Alp Res* 40:432–438
- Van den Broeke MR, van de Berg WJ, van Meijgaard E (2006a) Snowfall in coastal West Antarctica much greater than previously assumed. *Geophys Res Lett* 33:L02505. doi:[10.1029/2005GL025239](https://doi.org/10.1029/2005GL025239)
- Van den Broeke MR, van de Berg WJ, van Meijgaard E, Reijmer CH (2006b) Identification of Antarctic ablation areas using a regional atmospheric climate model. *J Geophys Res* 111:D18110. doi:[10.1029/2006JD007127](https://doi.org/10.1029/2006JD007127)
- Van den Broeke MR, van de Berg WJ, van Meijgaard E (2008) Firn depth correction along the Antarctic grounding line. *Antarctic Sci* 20:513–517. doi: [10.1017/S095410200800148X](https://doi.org/10.1017/S095410200800148X)
- Van den Broeke MR, Bamber J, Ettema J, Rignot E, Schrma E, van de Berg WJ, van Meijgaard E, Velicogna I, Wouters B (2009) Partitioning recent Greenland mass loss. *Science* 326:984–986
- Van de Berg WJ, van Den Broeke MR, van Meijgaard E (2006b) Reassessment of the Antarctic surface mass balance using calibrated output of a regional atmospheric climate model. *J Geophys Res* 111:D11104. doi:[10.1029/2005JD006495](https://doi.org/10.1029/2005JD006495)
- Velicogna I (2009) Increasing rates of ice mass loss from the Greenland and Antarctic ice sheets revealed by GRACE. *Geophys Res Lett* 36:L19503. doi:[10.1029/2009GL040222](https://doi.org/10.1029/2009GL040222)
- Velicogna I, Wahr J (2005) Greenland mass balance from GRACE. *Geophys Res Lett* 32(18):L18505. doi:[10.1029/2005GL023955](https://doi.org/10.1029/2005GL023955)

- Velicogna I, Wahr J (2006a) Acceleration of Greenland ice mass loss in spring 2004. *Nature* 443:329–331
- Velicogna I, Wahr J (2006b) Measurements of time-variable gravity show mass loss in Antarctica. *Science* 311:1754. doi:[10.1126/science.1123785](https://doi.org/10.1126/science.1123785)
- Willis JK, Chambers DP, Nerem RS (2008) Assessing the globally averaged sea level budget on seasonal to interannual timescales. *J Geophys Res* 113:C06015. doi:[10.1029/2007JC004517](https://doi.org/10.1029/2007JC004517)
- Wingham DJ, Ridout AJ, Scharroo R, Arthern RJ, Shum CK (1998) Antarctic elevation change from 1992 to 1996. *Science* 282:456. doi:[10.1126/science.282.5388.456](https://doi.org/10.1126/science.282.5388.456)
- Wingham DJ, Shepherd A, Muir A, Marshall GJ (2006) Mass balance of the Antarctic ice sheet. *Phil Trans R Soc A* 364:1627–1635. doi:[10.1098/rsta.2006.1792](https://doi.org/10.1098/rsta.2006.1792)
- Wouters B, Chambers D, Schrama EJO (2008) GRACE observes small scale mass loss in Greenland. *Geophys Res Lett* 35:L20501. doi:[10.1029/2008GL034816](https://doi.org/10.1029/2008GL034816)
- Zwally HJ, Giovinetto MB, Li J, Cornejo HG, Beckley MA, Brenner AC, Saba JL, Yi D (2005) Mass changes of the Greenland and Antarctic ice sheets and shelves and contributions to sea-level rise: 1992–2002. *J Glaciol* 51:509–527