

UCSF

UC San Francisco Previously Published Works

Title

The organic cation transporter 2 regulates dopamine D1 receptor signaling at the Golgi apparatus

Permalink

<https://escholarship.org/uc/item/0638z0xr>

Journal

eLife, 11

ISSN

2050-084X

Authors

Puri, Natasha M
Romano, Giovanna R
Lin, Ting-Yu
[et al.](#)

Publication Date

2022

DOI

10.7554/elife.75468

Copyright Information

This work is made available under the terms of a Creative Commons Attribution License, available at <https://creativecommons.org/licenses/by/4.0/>

Peer reviewed

The organic cation transporter 2 regulates dopamine D1 receptor signaling at the Golgi apparatus

Natasha M Puri¹, Giovanna R Romano^{1,2}, Ting-Yu Lin³, Quynh N Mai³, Roshanak Irannejad^{1,3*}

¹Department of Biochemistry & Biophysics, University of California, San Francisco, San Francisco, United States; ²Biochemistry Department, Weill Cornell Medicine, New York, United States; ³Cardiovascular Research Institute, University of California, San Francisco, San Francisco, United States

Abstract Dopamine is a key catecholamine in the brain and kidney, where it is involved in a number of physiological functions such as locomotion, cognition, emotion, endocrine regulation, and renal function. As a membrane-impermeant hormone and neurotransmitter, dopamine is thought to signal by binding and activating dopamine receptors, members of the G protein coupled receptor (GPCR) family, only on the plasma membrane. Here, using novel nanobody-based biosensors, we demonstrate for the first time that the dopamine D1 receptor (D1DR), the primary mediator of dopaminergic signaling in the brain and kidney, not only functions on the plasma membrane but becomes activated at the Golgi apparatus in the presence of its ligand. We present evidence that activation of the Golgi pool of D1DR is dependent on organic cation transporter 2 (OCT2), a dopamine transporter, providing an explanation for how the membrane-impermeant dopamine accesses subcellular pools of D1DR. We further demonstrate that dopamine activates Golgi-D1DR in murine striatal medium spiny neurons, and this activity depends on OCT2 function. We also introduce a new approach to selectively interrogate compartmentalized D1DR signaling by inhibiting G α s coupling using a nanobody-based chemical recruitment system. Using this strategy, we show that Golgi-localized D1DRs regulate cAMP production and mediate local protein kinase A activation. Together, our data suggest that spatially compartmentalized signaling hubs are previously unappreciated regulatory aspects of D1DR signaling. Our data provide further evidence for the role of transporters in regulating subcellular GPCR activity.

*For correspondence: roshanak.irannejad@ucsf.edu

Competing interest: The authors declare that no competing interests exist.

Funding: See page 18

Preprinted: 23 November 2020

Received: 10 November 2021

Accepted: 22 April 2022

Published: 25 April 2022

Reviewing Editor: Adam Linstedt, Carnegie Mellon University, United States

© Copyright Puri *et al.* This article is distributed under the terms of the [Creative Commons Attribution License](https://creativecommons.org/licenses/by/4.0/), which permits unrestricted use and redistribution provided that the original author and source are credited.

Editor's evaluation

This study uses a tour de force of biosensor constructs providing evidence that dopamine transport by OCT2 across the plasma membrane and also (presumably) into the Golgi activates GPCR signaling at the Golgi, leading to cAMP production and PKA activation. Thus, intracellularly compartmentalized signaling underlies aspects of dopamine D1 receptor signaling. The work will be of interest to scientists working on the biology of dopamine signaling.

Introduction

Dopamine (DA) is a major hormone and neurotransmitter that regulates a wide range of physiological responses, including reward-motivated behavior, aversion, cognition, and motor control in the central nervous system (CNS) (*Di Chiara and Imperato, 1988; Sallery et al., 2020; Sulzer, 2011*). DA also regulates physiological responses in non-CNS tissues such as sodium secretion in the kidney

(Missale et al., 1998). All known cellular actions of DA are mediated by DA receptors, members of the G protein coupled receptor (GPCR) superfamily. Several pathological conditions such as Parkinson's disease, schizophrenia, and addiction are related to dysregulation of the neuronal dopaminergic signaling pathway, while hypertension has been attributed to impaired renal dopaminergic signaling (Felder et al., 1990; Klein et al., 2019). DA receptor antagonists have been developed with the goal of blocking hallucinations and delusions that occur in schizophrenic patients, whereas DA receptor agonists are used to alleviate the motor deficits of Parkinson's disease (Felder et al., 1990; Klein et al., 2019; Urs et al., 2014).

In both the CNS and kidney, DA is produced locally. There are five subtypes of DA receptors, D1, D2, D3, D4, and D5, that are classified as D1-class receptors (D1 and D5) or D2-class receptors (D2, D3, and D4) (Kebabian, 1978; Spano et al., 1978). The D1-class receptors are primarily coupled to G α s/olf proteins and stimulate the activity of adenylyl cyclase (AC), leading to the production of the second messenger cyclic AMP (cAMP) (Beaulieu et al., 2015). In contrast, the D2 class are associated with G α i/o proteins and inhibit cAMP production (Beaulieu et al., 2015). D1 dopamine receptors (D1DRs) are highly expressed in the CNS where they underlie major brain functions such as locomotion, learning and memory, attention, impulse control, and sleep (Missale et al., 1998). D1DRs in the kidney regulate trafficking of sodium ATPase and transporters, thereby affecting renal function (Honegger et al., 2006; Wiederkehr et al., 2001).

Impermeable agonists such as DA have long been thought to activate D1DRs only at the plasma membrane. Like many GPCRs, removal of D1DRs from the cell surface by endocytosis has been described as a mechanism that attenuates cellular signaling (Ariano et al., 1997; Bloch et al., 2003; Vickery and von Zastrow, 1999). As such, efforts at modulating DA signaling as a therapeutic strategy for various pathophysiological conditions have only taken into consideration the consequences of signaling by plasma membrane-localized DA receptors (Jin et al., 2003; Panchalingam and Undie, 2001; Undie et al., 1994). However, evidence from the past decade suggests that for some GPCRs endocytosis might in fact activate a second phase of acute or prolonged G α s-mediated cAMP response from the endosomes (Calebiro and Koszegi, 2019; Calebiro et al., 2010; Feinstein et al., 2013; Ferrandon et al., 2009; Irannejad et al., 2013; Irannejad et al., 2015; Irannejad and von Zastrow, 2014; Kotowski et al., 2011; Lobingier and von Zastrow, 2019; Stoeber et al., 2018; Thomsen et al., 2018). Recent studies further support this notion by providing evidence that cAMP generation by activated receptors at the endosome is necessary to regulate transcriptional responses that are distinct from those elicited by activation of the plasma membrane receptor pool (Bowman et al., 2016; Godbole et al., 2017; Jean-Alphonse et al., 2014; Jensen et al., 2017; Peng et al., 2021; Tsvetanova and von Zastrow, 2014).

Most of the receptors that have been shown to exhibit a second phase of signaling from internal compartments are primarily coupled to G α s protein. cAMP diffusion is within the nanometer scale around phosphodiesterases at physiological conditions (Agarwal et al., 2016; Anton et al., 2022; Bock et al., 2020; Saucerman et al., 2014). Given this narrow range of diffusion, it has been difficult to explain how receptor activation solely on the plasma membrane results in the activation of downstream effectors at distant subcellular locations such as the endoplasmic reticulum, Golgi, and nucleus (Agarwal et al., 2016; Richards et al., 2016; Saucerman et al., 2014). As one explanation for this observation, we recently showed that activation of the Golgi-localized beta1 adrenergic receptors (β 1AR) causes local production of cAMP by Golgi-localized G α s protein. Importantly, we demonstrated that a catecholamine transporter facilitates the transport of epinephrine, a membrane-impermeant endogenous β 1AR agonist, to the lumen of the Golgi to activate the Golgi pool of β 1AR (Irannejad et al., 2017). The importance of generation of a local pool of cAMP by Golgi-localized β 1AR was further supported by the finding that activated Golgi- β 1ARs, but not activated plasma membrane- β 1ARs, cause PLC ϵ activation at the perinuclear/Golgi membrane, which mediates hypertrophic responses in cardiomyocytes (Irannejad et al., 2017; Nash et al., 2019).

Whether the need for local cAMP generation is unique to cell types or specific GPCRs is not well understood. The lack of cAMP mobility in cells becomes prominent in larger cells with higher membrane compartmentation that present physical barriers to cAMP diffusion. Considering the high degree of membrane compartmentation of neurons and proximal tubules of the kidney, the two main cell types that express D1DRs, we wondered whether D1DR signaling is also compartmentalized. Here, using a conformational-sensitive nanobody that recognizes activated D1DR, we show that the

preexisting pool of D1DR that is localized to the Golgi membrane is activated upon stimulation with extracellular DA. In addition to several cell lines, here we demonstrate that Golgi-localized D1DR signaling is also a feature of primary striatal medium spiny neurons (MSNs). The D1DR-expressing MSNs of striatum are well established to play significant roles in motivation, aversion, and reward (Alburges et al., 1992; Di Chiara and Imperato, 1988; Kim et al., 2015; Nestler and Luscher, 2019; Romach et al., 1999). Furthermore, we demonstrate that OCT2 facilitates the transport of DA to the Golgi-localized D1DR and regulates its local activity at the Golgi. We further show that OCT2 has a distinct expression pattern in the kidney and specific regions of the brain, including the MSNs, where D1DRs are endogenously expressed. Thus, our findings reveal that DA can activate D1DR signaling at the Golgi and point to a novel role for OCT2 as a factor that determines which cell types exhibit DA-mediated subcellular signaling.

Results

Nanobody-based conformational-sensitive biosensors detect active D1DR and Gs protein at subcellular membranes

We have previously shown that a single-domain camelid antibody, nanobody 80 (Nb80), originally developed to stabilize an active conformation of beta 2 adrenergic receptor (β 2AR) for crystallography purposes (Rasmussen et al., 2011), can be repurposed as a conformational biosensor to detect activated β 2AR and β 1AR in living cells (Irannejad et al., 2017; Irannejad et al., 2013). Through directed evolution on Nb80, a high-affinity nanobody (Nb6B9) was generated that stabilizes the active conformation of epinephrine-bound β 2AR (Ring et al., 2013). Given that β 2AR/Nb6B9 binding sites are highly conserved among other aminergic receptors such as β 1AR and D1DR (Figure 1—figure supplement 1a; Rasmussen et al., 2011), we reasoned that this nanobody could also be used as a conformational-sensitive biosensor to detect activated D1DR in real time and living cells (Figure 1a). In HeLa cells expressing Snap-tagged D1DR, Nb6B9 fused to GFP (Nb6B9-GFP) was diffuse throughout the cytoplasm (Figure 1b, 0 min). Upon stimulation of these cells with 10 μ M DA, Nb6B9-GFP was rapidly recruited first to the plasma membrane and shortly after to the Golgi apparatus (Figure 1b, 2 min, Figure 1—video 1). Nb6B9-GFP recruitment to the plasma membrane and the Golgi was dose dependent starting at 10 and 100 nM DA stimulations, respectively (Figure 1c, Figure 1—figure supplement 1b). Similar Nb6B9-GFP dose-dependent recruitments were observed upon activation of β 1AR at the plasma membrane and the Golgi (Figure 1—figure supplement 1c and d). Importantly, no Nb6B9 recruitment to any membrane was detected when delta opioid GPCRs, which lack sequence homology to Nb6B9 binding sites, were activated (Figure 1—figure supplement 1e), suggesting the specificity of this conformational biosensor. Together, these data suggest that the D1DR Golgi pool is activated in response to extracellular DA addition. Contrary to HeLa cells, treatment of D1DR-expressing HEK293 cells with 10 μ M DA resulted in the recruitment of Nb6B9-GFP to only the plasma membrane (Figure 1b, lower panel, Figure 1d, 2 min, Figure 1—video 2). By contrast, SKF81297, a selective membrane-permeant D1DR agonist, activated both the plasma membrane and the Golgi receptor pools in both HeLa and HEK293 cells (Figure 1—figure supplement 2, Figure 1—videos 3 and 4). In addition to the Golgi recruitment and consistent with a previous report (Kotowski et al., 2011), Nb6B9 was also found to colocalize with D1DR at the endosomes, at a later time after agonist addition, indicating an active pool of D1DR at endosomes (Figure 1—video 2). We further used mini-Gs protein, a more general biosensor for Gs-coupled GPCRs (Wan et al., 2018), to show that the active pool of D1DR at the plasma membrane, endosomes, and the Golgi can also be detected by mini-Gs recruitment to these locations. Although we do not have exact measurements for Nb6B9 and mini-Gs binding affinities to activated D1DR, these observations suggest that mini-Gs is more sensitive, allowing the detection of activated D1DR at the Golgi starting at 10 nM DA addition (Figure 1—figure supplement 3a and b).

To investigate whether activated D1DRs couple to G proteins to elicit a G-protein-mediated response at the Golgi, we took advantage of another nanobody-based biosensor, Nb37-GFP. We previously used Nb37-GFP to detect transiently active β 1AR/Gs and β 2AR/Gs complexes at the Golgi and endosomes, respectively (Irannejad et al., 2017; Irannejad et al., 2013). Nb37-GFP was recruited to the plasma membrane and the Golgi upon stimulation with DA, suggesting that the D1DR Golgi pool couples to G protein and activates it (Figure 1—figure supplement 4b and c). Together, these

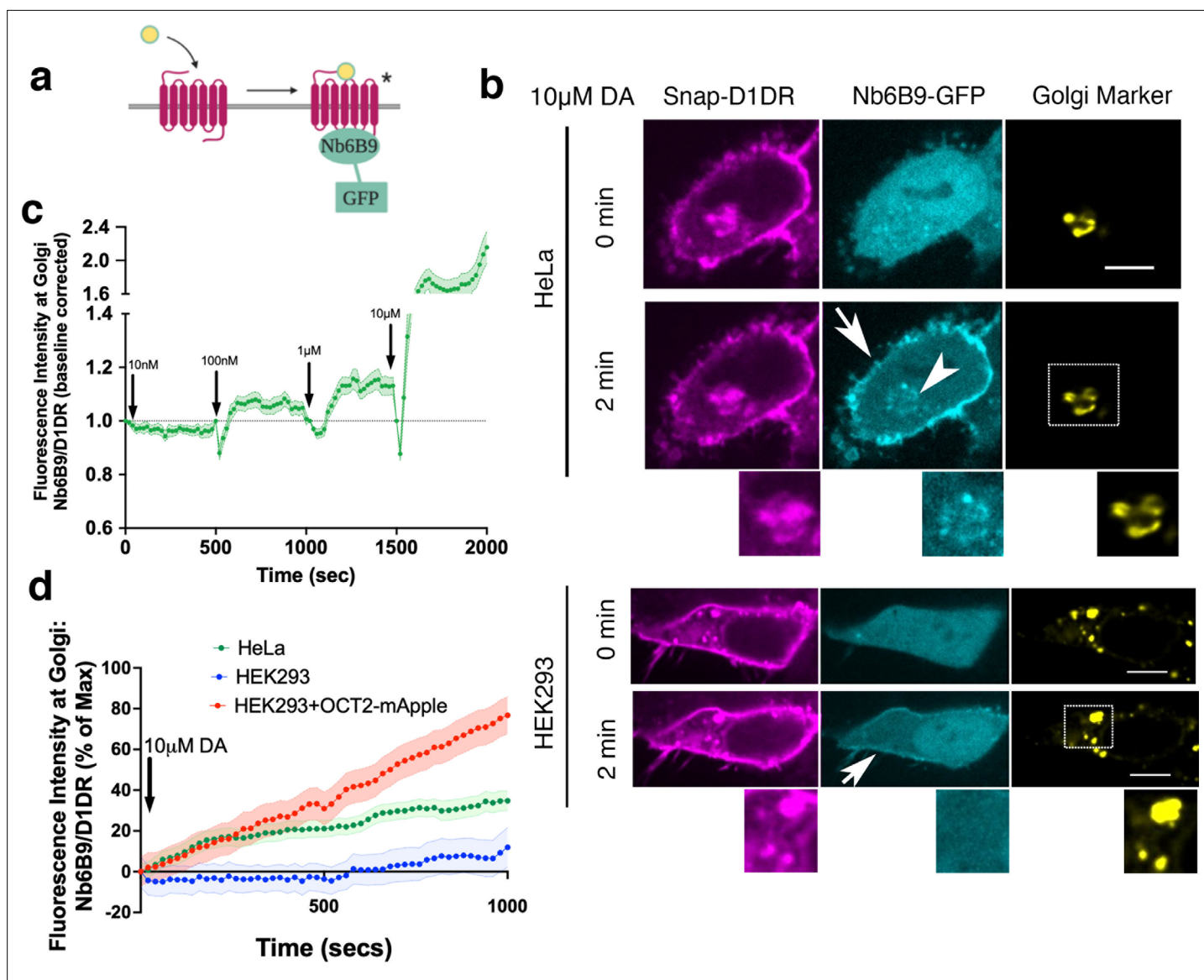


Figure 1. Conformational biosensor detects activated D1DR at the plasma membrane and the Golgi upon dopamine (DA) stimulation. **(a)** Nb6B9 binds to the receptor exclusively in its active conformation. We fused Nb6B9 to GFP and used it as a conformational biosensor for D1DR. **(b)** Confocal images of representative D1DR-expressing HeLa (top panel) and HEK293 cells (lower panel) with Nb6B9-GFP and GalT-mRFP expression before and after 10 μ M DA addition. Stimulation with 10 μ M DA results in recruitment of Nb6B9 to active D1DR at the plasma membrane and the Golgi in HeLa cells ($n = 37$ cells, Pearson's coefficient = 0.62, respectively, nine biological replicates); 10 μ M DA treatment only activates plasma membrane-localized D1DR in HEK293 cells ($n = 17$ cells, Pearson's coefficient = 0.15, five biological replicates). Lower panels show zoomed images of insets for Snap-D1DR, Nb6BP, and the Golgi marker. Arrows indicate active D1DR at plasma membrane; arrowhead indicates active D1DR at Golgi membrane; Scale bar = 10 μ m. **(c)** Quantification of D1DR activation at the Golgi in HeLa cells upon addition of increasing concentrations of DA; normalized fluorescence intensity of Nb6B9 at Golgi relative to Snap-tagged-D1DR at Golgi. Quantifications were baseline corrected after addition of each dose ($n = 27$ cells, four biological replicates). **(d)** Quantification of D1DR activity at Golgi in HeLa and HEK293 cells; normalized fluorescence intensity of Nb6B9 at Golgi relative to D1DR at Golgi labeled with Snap-tagged-D1DR.

The online version of this article includes the following video and figure supplement(s) for figure 1:

Figure supplement 1. Nb6B9 detects activated D1DR and β 1AR at the plasma membrane and the Golgi in a dose-dependent manner, but not delta opioid receptors.

Figure supplement 2. Conformational biosensor detects activated D1DR at the plasma membrane and the Golgi upon SKF81297 stimulation.

Figure supplement 3. MiniG α s protein biosensor detects active D1DR at the plasma membrane and the Golgi.

Figure supplement 4. Conformational biosensors detect activated D1DR and Gs at the plasma membrane and the Golgi.

Figure 1 continued on next page

Figure 1 continued

Figure 1—video 1. Confocal image series of D1DR-expressing HeLa cells (magenta), Nb6B9-GFP (cyan), and the Golgi marker (yellow), incubated with 10 μ M dopamine.

<https://elifesciences.org/articles/75468/figures#fig1video1>

Figure 1—video 2. Confocal image series of D1DR-expressing HEK293 cells (magenta), Nb6B9-GFP (cyan), and the Golgi marker (yellow), incubated with 10 μ M dopamine.

<https://elifesciences.org/articles/75468/figures#fig1video2>

Figure 1—video 3. Confocal image series of D1DR-expressing HeLa cells (magenta), Nb6B9-GFP (cyan), and the Golgi marker (yellow), incubated with 10 μ M SKF81927.

<https://elifesciences.org/articles/75468/figures#fig1video3>

Figure 1—video 4. Confocal image series of D1DR-expressing HEK293 cells (magenta), Nb6B9-GFP (cyan), and the Golgi marker (yellow), incubated with 10 μ M SKF81927.

<https://elifesciences.org/articles/75468/figures#fig1video4>

findings suggest a distinct spatiotemporal regulation of D1DR signaling at the plasma membrane and the Golgi membranes.

OCT2 facilitates the transport of dopamine to the Golgi-localized D1DR

These observations raised the key question of how DA, a hydrophilic/membrane-impermeant monoamine, can access the Golgi pool of D1DR. The first clue came from the observation that DA activates Golgi-D1DR in HeLa cells but not HEK293 cells (**Figure 1b**, **Figure 1—videos 1 and 2**), whereas SKF81297, a hydrophobic/membrane-permeant agonist, activates the Golgi pool of D1DR in both cell types (**Figure 1—figure supplement 2**, **Figure 1—videos 3 and 4**). These distinct effects of DA and SKF81297 are not based on their differential potency for activating D1DR as they have comparative EC₅₀ values in inducing cAMP responses (**Figure 2—figure supplement 1a**). Moreover, D1DR activation at the Golgi is not dependent on receptor internalization as inhibiting endocytosis by blocking dynamin did not block D1DR activation at the Golgi (**Figure 1—figure supplement 4a and c**). We previously found that a membrane transporter, organic cation transporters 3 (OCT3), facilitates epinephrine transport, resulting in activation of the Golgi-localized β 1AR. OCT3 is a member of the solute carrier (SLC) family 22, uptake 2 transporters that are electrogenic and transport catecholamines in a bidirectional manner. Importantly, OCT transporters are localized on the plasma membrane and intracellular compartments, including nuclear envelope, thus they can transport catecholamines across the plasma membrane and across internal membrane compartments (**Gasser et al., 2017; Irannejad et al., 2017**). Therefore, we hypothesized that another OCT family transporter can similarly function in DA transport to allow for its delivery to the Golgi and for the activation of Golgi-localized D1DR pools.

There are three main OCTs that have largely overlapping distribution but distinct substrates (**Nies et al., 2011; Roth et al., 2012; Schomig et al., 2006; Taubert et al., 2007**). OCT3 facilitates the transport of epinephrine and norepinephrine (**Nies et al., 2011**). DA has been identified as a key endogenous substrate for another member of the SLC22A family, OCT2 (SLC22A2) (**Amphoux et al., 2006; Bednarczyk et al., 2003; Busch et al., 1998; Gründemann et al., 1998; Schomig et al., 2006; Taubert et al., 2007**). Therefore, we asked whether OCT2 has a role in transporting DA to the Golgi membranes. We found robust OCT2 protein expression in HeLa cells as measured by Western blotting, whereas expression in HEK293 cells was significantly lower (**Figure 2—figure supplement 1b**). In immunostaining experiments, we found OCT2 localization on both the plasma membrane and the Golgi in HeLa cells by using an OCT2-specific antibody. This immunostaining was abrogated in HeLa cells expressing SLC22A2-specific shRNAs but not those expressing the control, scrambled shRNA (**Figure 2—figure supplement 1d**). To test the role of OCT2 in DA transport, we first used corticosterone, an inhibitor that has been shown to broadly inhibit OCTs but more frequently used to inhibit OCT3 (**Gasser and Lowry, 2018; Koepsell, 2019; Nies et al., 2011**). We found that corticosterone did not inhibit DA-mediated D1DR activation at the Golgi in HeLa cells (**Figure 2b**, **Figure 2—figure supplement 2a**). We then used imipramine, which at lower concentrations is thought to selectively inhibit OCT2. At both 10 and 100 μ M concentrations, imipramine inhibited DA-mediated D1DR activation at the Golgi (**Figure 2b**). By contrast, SKF81297, a membrane-permeant D1DR agonist that can diffuse across membranes and does not require facilitated transport, could still access and activate Golgi-D1DR in imipramine-treated cells (**Figure 2a–c**, **Figure 2—video 1**). Next, we overexpressed

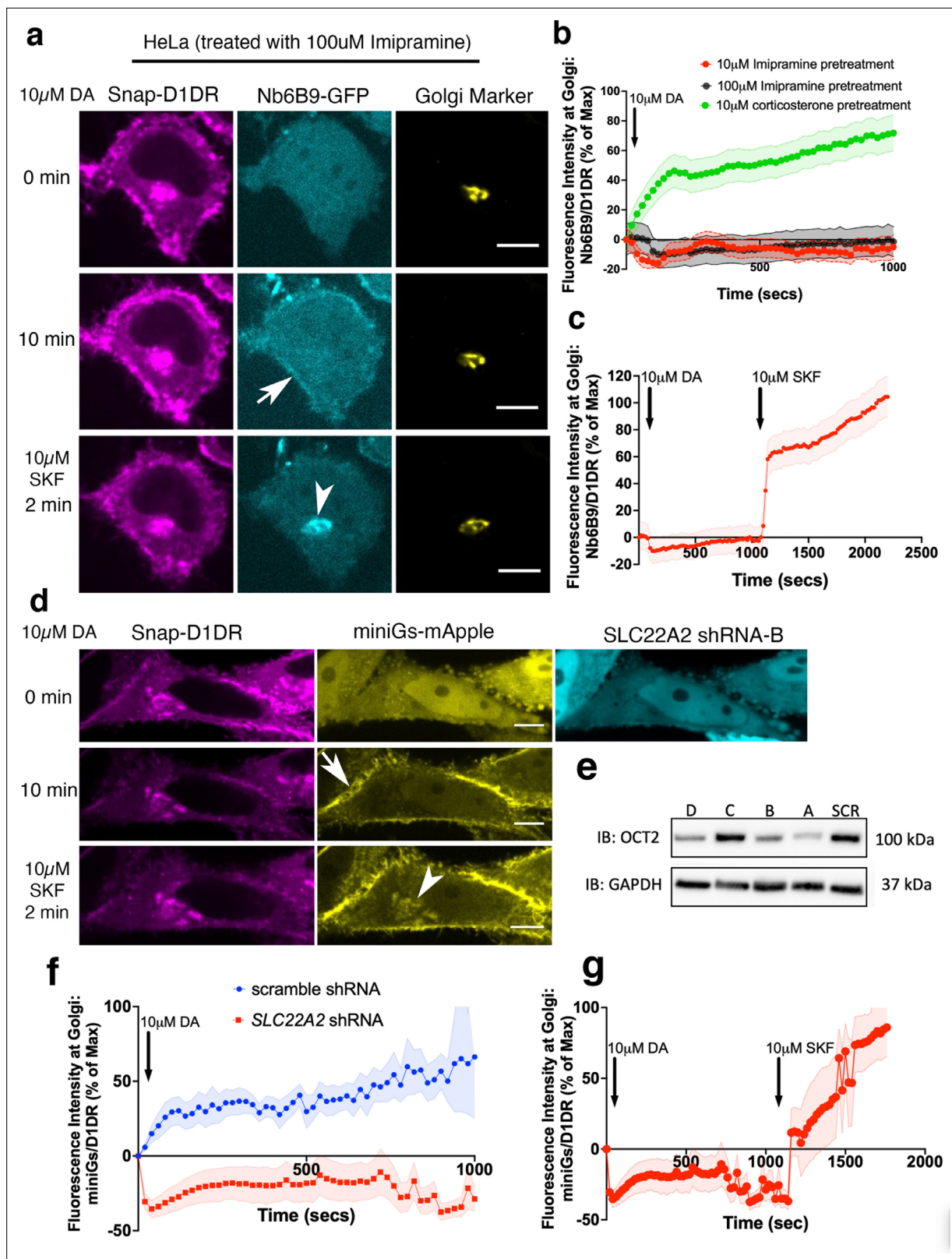


Figure 2. OCT2 facilitated dopamine (DA) transport to the Golgi-localized D1DR. (a) Representative HeLa cell expressing Snap-D1DR, Nb6B9-GFP, and GalT-mRFP expression pretreated with 100 µM imipramine for 15 min, before and after 10 µM DA addition. Inhibition of OCT2 blocks Golgi-localized D1DR activation but SKF81297 can still reach the Golgi membranes and activate D1DR Golgi pool (n = 30 cells, Pearson's coefficient = 0.2 and 0.68 after DA and SKF addition, respectively, three biological replicates). Arrow indicates active D1DR at plasma membrane; arrowhead indicates active D1DR at

Figure 2 continued on next page

Figure 2 continued

Golgi membrane; Scale bar = 10 μm . **(b)** Quantification of Nb6B9-GFP recruitment at Golgi upon 10 μM DA stimulation in HeLa cells pretreated with 10 and 100 μM imipramine, 10 μM corticosterone, and **(c)** after 10 μM SKF81297 addition; normalized fluorescence intensity of Nb6B9-GFP relative to Snap D1DR at Golgi ($n = 30$, three biological replicates). **(d)** Representative HeLa cell expressing Snap-D1DR, miniGs-mApple, and *SLC22A2* shRNA-B-GFP, before and after 10 μM DA addition. *SLC22A2* shRNA blocks Golgi-localized D1DR activation. 10 μM SKF81297 addition activates D1DR at the Golgi ($n = 16$ cells, Pearson's coefficient = -0.05 and 0.74 after DA and SKF addition, respectively, three biological replicates). **(e)** Detection of OCT2 expression in HeLa cells expressing different shRNAs by Western blot. **(f)** Quantification of D1DR activation at the Golgi in HeLa cells expressing scramble or *SLC22A2* shRNAs upon addition of 10 μM DA; normalized fluorescence intensity of Nb6B9 at Golgi relative to Snap-tagged-D1DR at Golgi. **(g)** Quantification of D1DR activation at the Golgi in HeLa cells expressing *SLC22A2* shRNA-B and D upon addition of 10 μM SKF81297.

The online version of this article includes the following video and figure supplement(s) for figure 2:

Figure supplement 1. OCT2 expression is required for facilitated transport of DA to the Golgi-localized D1DR.

Figure supplement 2. OCT2, but not OCT3, is required for DA-mediated D1DR activation at the Golgi.

Figure 2—video 1. Confocal image series of D1DR-expressing HeLa cells (magenta), Nb6B9-GFP (cyan), and Galt-mApple (yellow), pretreated with 100 μM imipramine and incubated with 10 μM dopamine and SKF81297.

<https://elifesciences.org/articles/75468/figures#fig2video1>

Figure 2—video 2. Confocal image series of D1DR-expressing HEK293 cells (magenta), Nb6B9-GFP (cyan), and OCT2-mApple (yellow), incubated with 10 μM dopamine.

<https://elifesciences.org/articles/75468/figures#fig2video2>

Figure 2—video 3. Confocal image series of D1DR-expressing HeLa cells (magenta), miniGs-mApple (yellow), expressing *SLC22A2* shRNA-B and incubated with 10 μM Dopamine for 20 min and then 10 μM SKF81297.

<https://elifesciences.org/articles/75468/figures#fig2video3>

OCT2-mApple in HEK293 cells and used Nb6B9-GFP to assess D1DR activation. By overexpressing OCT2-mApple in HEK293 cells, we found that Nb6B9-GFP could now be recruited to activated D1DR at the Golgi membranes (**Figure 1c**, **Figure 2—figure supplement 1c**, **Figure 2—video 2**). To further confirm the role of OCT2 in DA transport, we used two different *SLC22A2* shRNAs to decrease OCT2 expression (**Figure 2e**). We found that DA-mediated, but not that of SKF81297, D1DR activation at the Golgi was inhibited in HeLa cells expressing *SLC22A2* shRNA (**Figure 2d–g**, **Figure 2—video 3**). Control, scrambled shRNA did not inhibit DA-mediated D1DR activation at the Golgi (**Figure 2—figure supplement 2b**). Together, these results suggest that OCT2 facilitates the transport of DA to the Golgi lumen where it then activates D1DR at the Golgi membranes.

Regulation of dopamine-mediated activation of the Golgi-localized D1DR in striatal MSNs by OCT2

To investigate the role of OCT2 in D1DR signaling in physiologically relevant cell types, we measured OCT2 expression patterns in cell types derived from the kidney and the brain, the two main organs where D1DRs are known to have function. Previous reports, some of which were dependent on RNA measurements, had suggested that OCT2 is robustly expressed in the striatum and cortex, where D1DR is known to express and have function (**Castro et al., 2013; Hallett et al., 2006; Tang and Bezprozvanny, 2004**), but at low levels in the hippocampus and substantia nigra, regions in which D1DR also has known functions (**Alburges et al., 1992; Arnsten et al., 1995; Busch et al., 1998; Double and Crocker, 1995**). By Western blotting using a validated antibody (**Figure 2e**), we similarly found significant OCT2 expression in the striatum and cortex, low expression in the hippocampus, and negligible expression in substantia nigra (**Figure 3—figure supplement 1a**).

To determine the role of OCT2 in regulating a distinct pool of D1DR signaling in neurons, we isolated primary murine striatal MSNs, where OCT2 is expressed at high levels (**Figure 3—figure supplement 1a; Bacq et al., 2012; Matsui et al., 2016**). Within the striatum, D1DR-expressing MSNs have been shown to play roles in DA-regulated processes such as motivation, aversion, and reward seeking (**Alburges et al., 1992; Di Chiara and Imperato, 1988; Kim et al., 2015; Nestler and Luscher, 2019; Romach et al., 1999**). We detected endogenous D1DR on both the plasma membrane and the Golgi membranes in MSNs using two different D1DR antibodies (**Figure 3—figure supplement 1b**, lower panel, **Figure 3—figure supplement 1c**). D1DR immunostaining was diminished when MSNs were immunostained in the presence of D1DR blocking peptide (**Figure 3—figure supplement 1c**). Using the same OCT2 antibody that was used in HeLa cells (**Figure 2—figure supplement 1d**), we

also showed that MSNs express OCT2 on both the plasma membrane and the Golgi (**Figure 3—figure supplement 1d**). Stimulating D1DR-expressing MSNs with DA resulted in the recruitment of Nb6B9-GFP to both the plasma membrane and the perinuclear regions (**Figure 3a and c, Figure 3—video 1**). The perinuclear region in MSN is indeed colocalized with the Golgi membranes markers (**Figure 3—figure supplement 1b, top panel**). Importantly, OCT2 inhibition resulted in the inhibition of DA-mediated Golgi-D1DR activation. By contrast, the membrane-permeant SKF81297 activated D1DR at the Golgi (**Figure 3b and c, Figure 3—video 2**). To demonstrate that D1DR can form a functional complex with G protein at the Golgi in MSNs, we took advantage of Nb37-GFP to detect transient D1DR/G protein coupling. Similar to what we have observed in HeLa cells, DA stimulation resulted in the recruitment of Nb37-GFP to the Golgi, suggesting that the D1DR Golgi pool is able to couple to G protein and activate it in MSNs (**Figure 3d**). These data demonstrate that Golgi-localized G protein signaling by D1DRs occurs in a physiologically relevant cell type and that this signaling requires OCT2. Moreover, as there are cell types that express D1DR but not OCT2, our findings suggest that OCT2 expression could determine which cell types exhibit both plasma membrane and Golgi-localized D1DR signaling under physiological conditions.

Golgi and plasma membrane-localized D1DR both contribute to the cAMP response

Our data suggested that the plasma membrane and the Golgi pools of D1DR both couple to the Gs protein. In addition to its presence at the plasma membrane, AC has been reported to localize at the Golgi/perinuclear membranes (**Boivin et al., 2006; Cancino et al., 2014**). We therefore asked whether D1DR/Gs complexes at both the plasma membrane and the Golgi activate Gs-mediated cAMP responses. To address this question, we utilized a rapamycin dimerization system composed of FK506-binding protein (FKBP) and FKBP-rapamycin binding domain of FRAP (FRB) to rapidly induce recruitment of Nb6B9 to specific membrane compartments. This makes it possible to specifically block D1DR/Gs coupling at each distinctly localized pool. We have previously shown that β ARs nanobody, Nb80, which binds to the same region as G protein (**Chung et al., 2011; Rasmussen et al., 2011**), blocks either the plasma membrane or the Golgi- β 1AR-mediated cAMP responses when it is recruited locally to these compartments at high concentrations (**Irannejad et al., 2017**). This inhibition is likely due to steric occlusion of the G α s protein. Using HEK293 cells expressing either FKBP at the plasma membrane or the Golgi with FRB fused to Nb6B9 (FRB-Nb6B9), we demonstrated that treatment with rapalog, a rapamycin analog, specifically targets Nb6B9 to either membrane (**Figure 4a–c**). Upon stimulation with membrane-permeant agonist SKF81297, Nb6B9 targeted to the plasma membrane disrupts plasma membrane-D1DR/G proteins coupling, while Golgi-D1DR is still able to elicit a cAMP response (**Figure 4d**). In turn, treatment with rapalog in cells expressing Golgi-targeted FKBP and FRB-Nb6B9 and subsequent stimulation with SKF81297 resulted in inhibition of the Golgi-D1DR pool (**Figure 4e**). Importantly, rapalog treatment alone had no effect on the overall cAMP production elicited by Forskolin, a direct activator of AC (**Figure 4f**). These data indicate that Golgi-localized D1DR is able to promote cAMP response.

Local activation of PKA at the Golgi depends on selective activation of Golgi-localized D1DR

A key downstream effector sensed by cAMP is protein kinase A (PKA). PKA is a holoenzyme, consisting of two catalytic and two regulatory subunits (**Figure 5a**). There are two PKA types (types I and II) that are anchored to distinct subcellular locations through interactions with distinct A kinase anchoring proteins (**Soberg and Skålhegg, 2018**). PKA type II has been shown to localize to the perinuclear/Golgi membranes (**Nigg et al., 1985**). Binding of cAMP to the PKA regulatory subunit induces rapid dissociation and activation of the PKA catalytic subunit (**Figure 5a; Tillo et al., 2017; Walker-Gray et al., 2017**). To test whether cAMP generation by Golgi-localized D1DR/Gs complex results in the activation of PKA at the perinuclear/Golgi, we utilized a previously described HEK293T knock-in cell line expressing a split fluorescent protein, labeling native PKA catalytic subunit gene with GFP (PKAcac-GFP) (**Feng et al., 2017; Peng et al., 2021**). Stimulation of HEK293T PKAcac-GFP knock-in cell lines expressing D1DR with 10 nM SKF81297, a concentration that activates both pools of D1DR (**Figure 1—figure supplement 3a**), resulted in rapid dissociation of PKAcac-GFP from the perinuclear/Golgi membranes (**Figure 5b, top panel**). Quantification of these data shows that

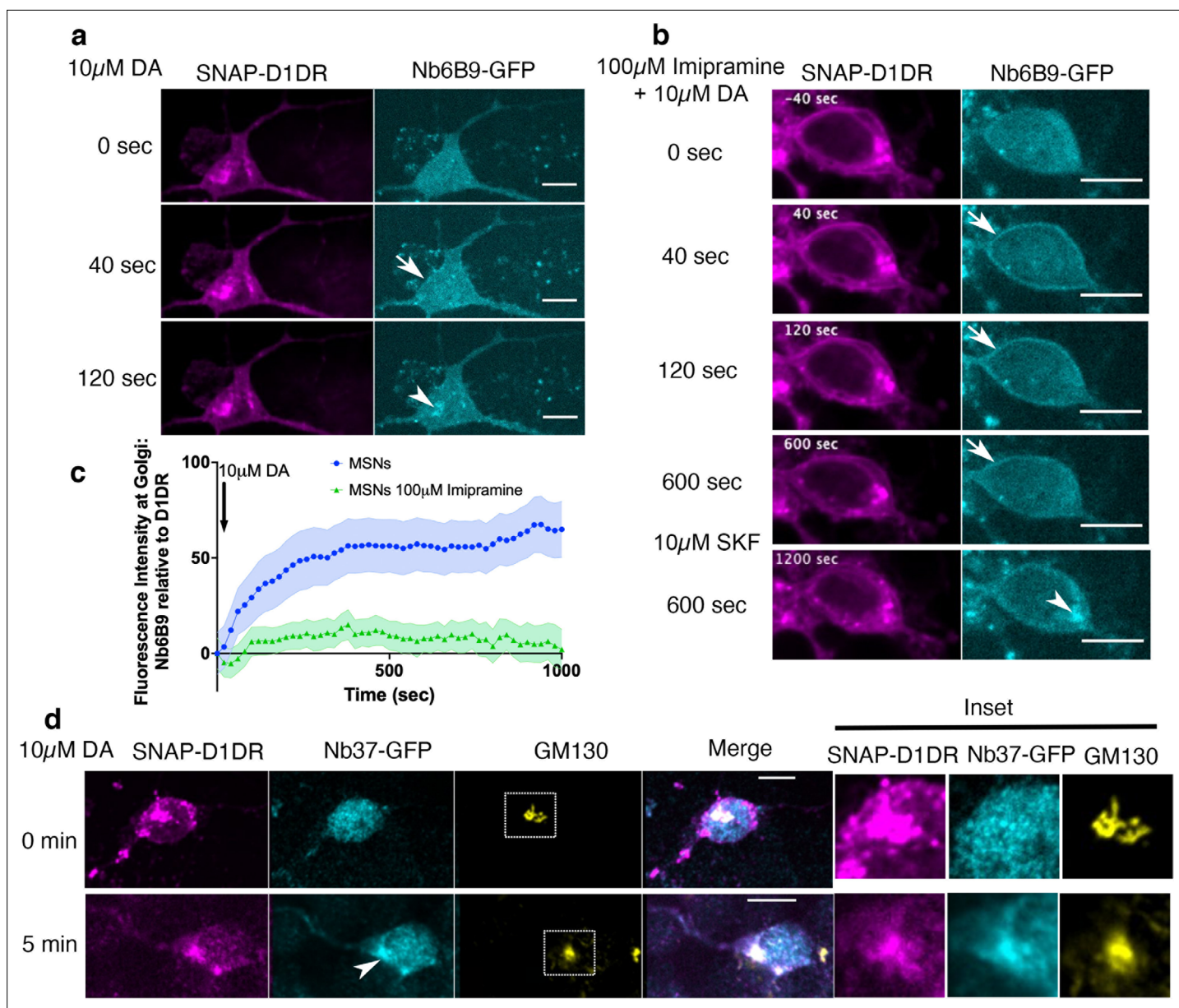


Figure 3. Regulation of dopamine (DA)-mediated activation of the Golgi-localized D1DR in striatal neurons by OCT2. **(a)** Representative medium spiny neurons (MSN) expressing Snap-D1DR and Nb6B9-GFP at indicated times after 10 μ M DA addition. DA stimulates D1DR activation at the Golgi in MSNs ($n = 22$ cells, Pearson's coefficient = 0.67, six biological replicates). Arrow indicates active D1DR at plasma membrane; Arrowhead indicates active D1DR at Golgi membrane; Scale bar = 10 μ m. **(b)** Representative MSN cell expressing Snap-D1DR and Nb6B9-GFP, pretreated with 100 μ M imipramine for 15 min, before and after 10 μ M DA addition. Inhibition of OCT2 blocks Golgi-localized D1DR activation at MSN $n = 18$ cells, Pearson's coefficient = 0.38, six biological replicates but SKF81297 can still reach the Golgi membranes and activate D1DR Golgi pool ($n = 6$ cells, Pearson's coefficient = 0.75, four biological replicates). Arrow indicates active D1DR at plasma membrane; Arrowhead indicates active D1DR at Golgi membrane; scale bar = 10 μ m. **(c)** Quantification of Nb6B9-GFP recruitment at Golgi upon 10 μ M DA stimulation in MSNs cells pretreated with OCT2 inhibitor; normalized fluorescence intensity of Nb6B9-GFP relative to Snap D1DR at Golgi ($n = 12$ and 7, respectively, five biological replicates). **(d)** Representative MSN expressing Snap-D1DR and Nb37-GFP before and after 10 μ M DA stimulation. DA stimulates G protein activation at the Golgi in D1DR-expressing MSNs ($n = 10$ cells, Pearson's coefficient = 0.34 and 0.62 before and after 10 μ M DA stimulation, six biological replicates). Arrowhead indicates active Gs at Golgi membrane; right panels show zoomed images of insets for Snap-D1DR, Nb37-GFP, and the Golgi marker (GM130). Scale bar = 10 μ m.

The online version of this article includes the following video and figure supplement(s) for figure 3:

Figure supplement 1. Medium spiny neurons endogenously express OCT2 and D1DR at the plasma membrane and the Golgi.

Figure 3—video 1. Confocal image series of D1DR-expressing medium spiny neurons (MSNs) (magenta) and Nb6B9-GFP (cyan), incubated with 10 μ M dopamine.

Figure 3 continued on next page

Figure 3 continued

<https://elifesciences.org/articles/75468/figures#fig3video1>

Figure 3—video 2. Confocal image series of D1DR-expressing medium spiny neurons (MSNs) (magenta) and Nb6B9-GFP (cyan), pretreated with 100 μ M imipramine and incubated with 10 μ M dopamine and SKF81297.

<https://elifesciences.org/articles/75468/figures#fig3video2>

stimulation with SKF81297 results in sustained activation of PKA at the perinuclear/Golgi regions (**Figure 5c**, **Figure 5—figure supplement 1**). We then asked whether PKAcat dissociation is mediated by the activation of D1DR Golgi pool. Given that HEK293T express very low levels of OCT2 transporter (**Figure 2—figure supplement 1b**) and thus DA cannot be sufficiently transported to the Golgi membranes, we used DA to specifically activate the plasma membrane pool of D1DR. Importantly, stimulation of HEK293T PKAcat-GFP knock-in cells with 10 nM DA, a concentration with similar potency as SKF81297 (**Figure 2—figure supplement 1a**), did not promote PKAcat dissociation (**Figure 5b**, lower panel, and c, **Figure 5—figure supplement 1**). Together, these data indicate that

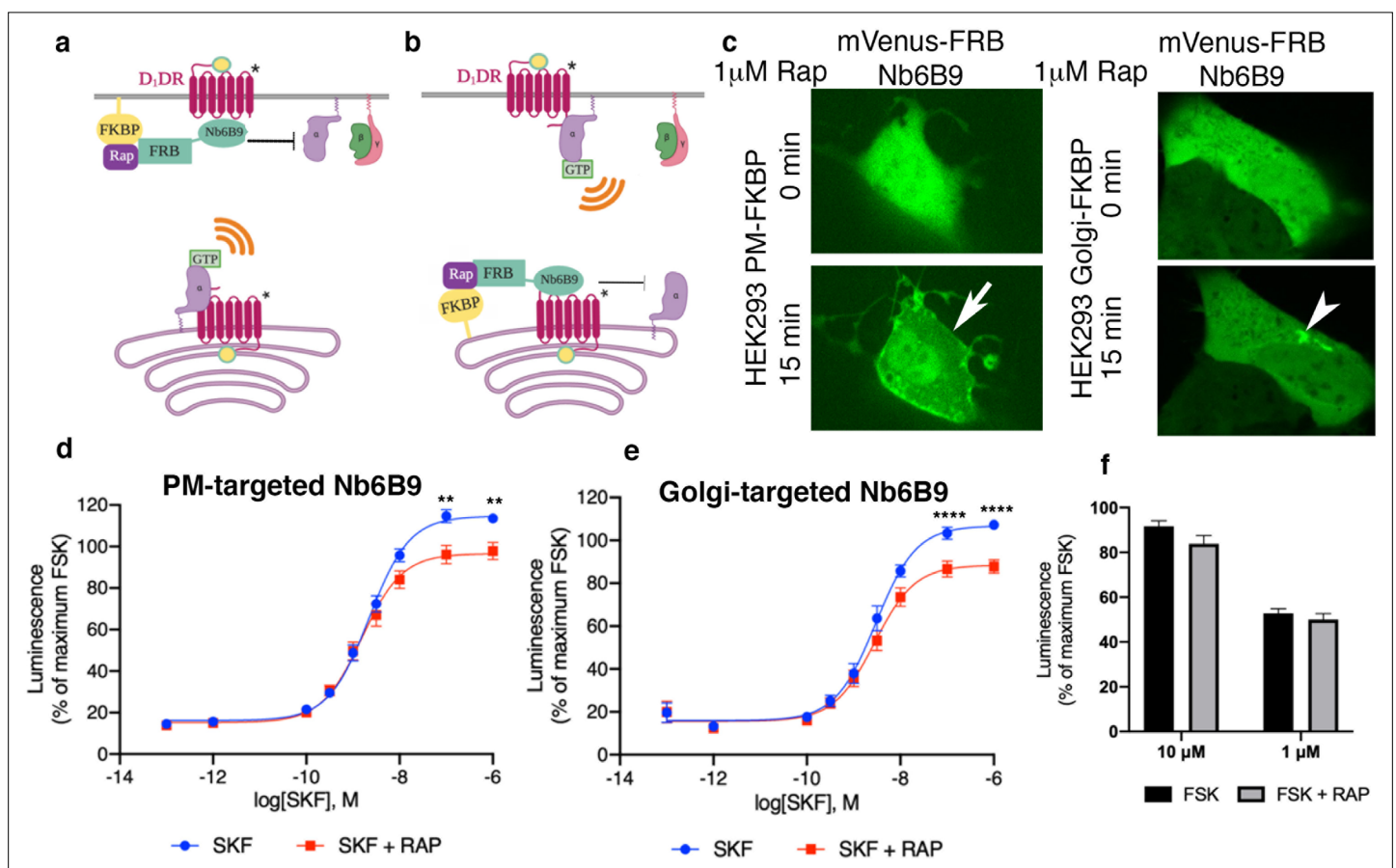


Figure 4. Both plasma membrane and Golgi-localized D1DR promote cAMP production. Model of blocking D1DR-Gs coupling at the plasma membrane (PM) (**a**) and the Golgi membrane (**b**) after recruitment of mVenus-FRB-Nb6B9. FKBP was targeted to either the PM (**a**) or the Golgi membrane (**b**), and its binding partner FRB-mVenus was fused to Nb6B9. Upon addition of rapalog (rapamycin analog), FKBP and FRB heterodimerize and sequester Nb6B9 to either membrane, disrupting G protein coupling to the receptor and thus blocking signaling from each respective location. (**c**) Representative confocal images of HEK293 cells expressing either PM or Golgi targeted FKBP showing mVenus-FRB Nb6B9 localization at indicated times after rapalog addition. Representative cells confirm inducible sequestration of Nb6B9 to either PM or Golgi. Arrow indicates PM; arrowhead indicates Golgi. (**d**) Forskolin-normalized D1DR-mediated cAMP response with and without rapalog pretreatment (1 μ M, 15 min) and SKF81297 at indicated concentrations in HEK293-expressing PM-FKBP (mean \pm SEM, n = 6 biological replicates, p-values of 0.0021 and 0.0015 at 10^{-7} and 10^{-6} , respectively). (**e**) Forskolin-normalized D1DR-mediated cAMP response with and without rapalog pretreatment (1 μ M, 15 min) and SKF81297 at indicated concentrations in HEK293-expressing Golgi-FKBP (mean \pm SEM, n = 6 biological replicates, p-values of <0.0001 at 10^{-7} and 10^{-6}). (**f**) Effect of 1 and 10 μ M rapalog on forskolin-mediated cAMP response (n = 3 biological replicates).

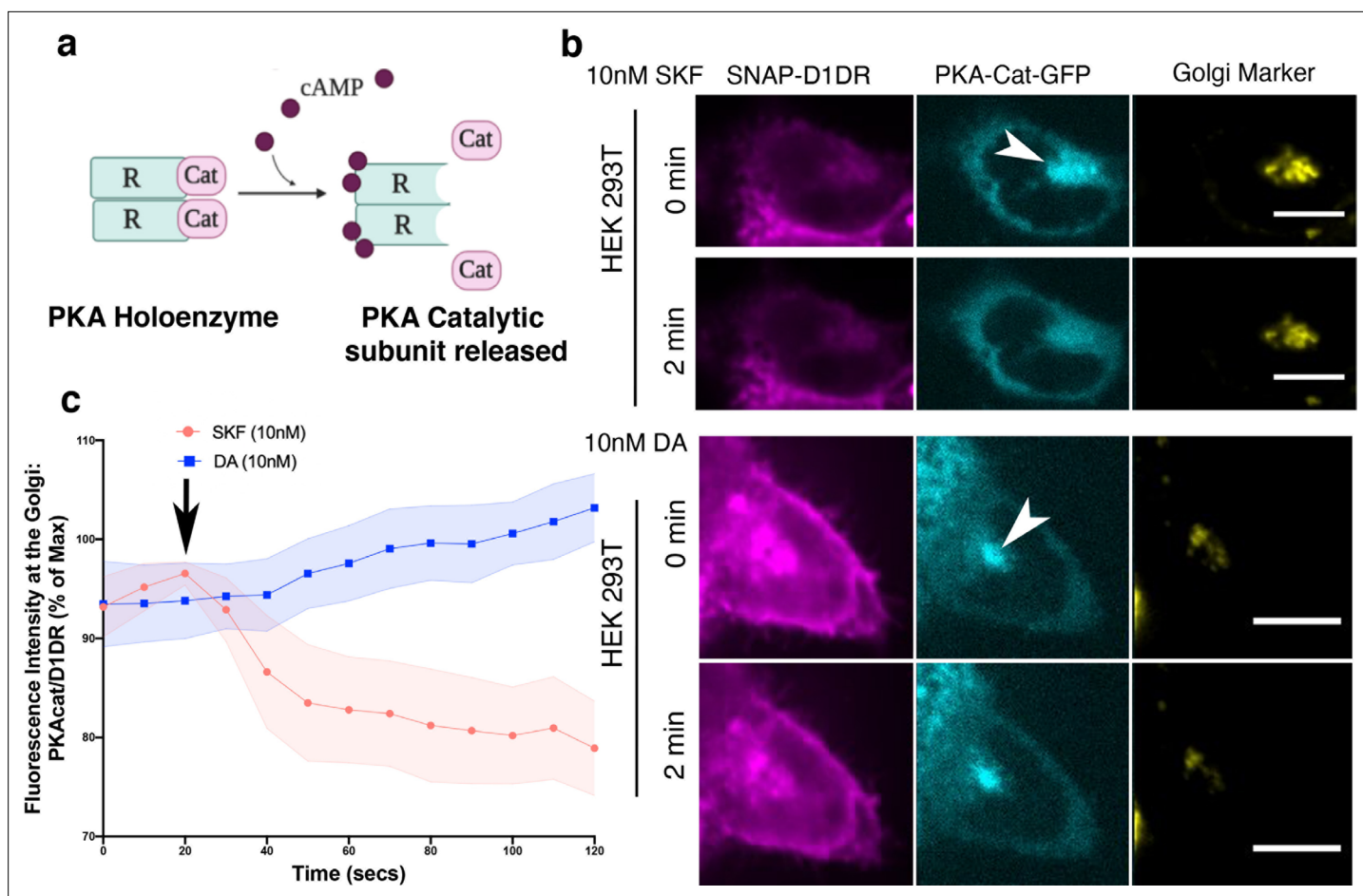


Figure 5. Golgi-localized protein kinase A (PKA) is activated by D1DR at the Golgi. **(a)** Model of PKA activation; cAMP binds PKA regulatory subunit (R), rendering PKA catalytic subunit (PKA-cat) dissociation. **(b)** Confocal images of representative D1DR-expressing HEK293 cells with endogenous PKA-cat-GFP and GalT-mRFP expression at indicated times after 10 nM SKF81927 (top panels; $n = 11$ cells, Pearson's coefficient 0.53, three biological replicates) or 10 nM dopamine (DA) (lower panels, $n = 12$ cells, Pearson's coefficient = 0.64, three biological replicates). Arrowhead indicates PKAcat at Golgi membrane; scale bar = 10 μm . **(c)** Normalized fluorescence intensity of PKAcat relative to Golgi-D1DR after treatment with 10 nM DA or 10 nM SKF81927.

The online version of this article includes the following figure supplement(s) for figure 5:

Figure supplement 1. Kinetics of PKAcat-GFP dissociation from the Golgi membrane upon activation of the D1DR Golgi pools.

activation of D1DR at the Golgi, but not the plasma membrane, results in local PKA activation at the perinuclear/Golgi regions.

Dopamine uncaging triggers rapid activation of Golgi-localized D1DR and local PKA

To further investigate the role of Golgi-localized D1DR in activating PKA locally, we utilized a photo-sensitive caged DA that becomes uncaged upon blue light exposure (**Figure 6a**). Unlike DA, caged DA is hydrophobic and thus membrane permeant (**Castro et al., 2013; Yapo et al., 2017**). To ensure that caged DA accumulates inside the cell and reaches the Golgi-localized D1DR, we incubated HEK293T PKAcat-GFP knock-in cells with 1 μM caged DA for 10 min in a dark incubator. Addition of caged DA to HEK293T PKAcat-GFP cells did not activate D1DR, as indicated by cytoplasmic localization of Nb6B9-mApple, confirming that DA is inactive in its caged form (**Figure 6b**, top panel). Upon stimulation of cells with blue light for 10 s, we observed D1DR activation at the Golgi, as detected by rapid Nb6B9-mApple recruitment to the Golgi membranes within seconds after blue light exposure (**Figure 6b and c, Figure 6—video 1**). This was then followed by PKAcat-GFP dissociation from the perinuclear/Golgi regions as a result of cAMP production and PKA activation (**Figure 6b and c**,

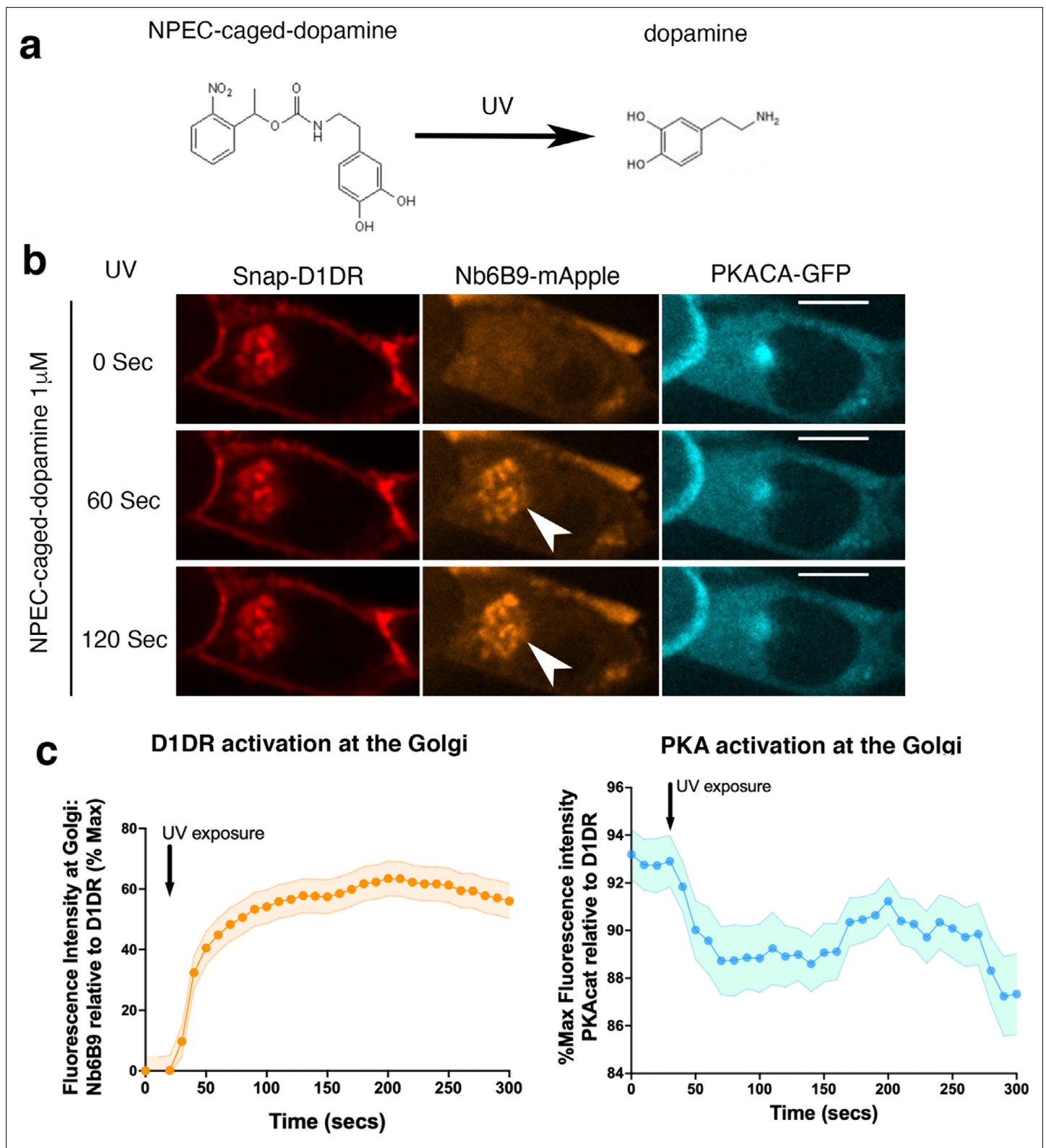


Figure 6. Rapid activation of Golgi-localized D1DR and protein kinase A (PKA) by photo-release of dopamine.

(a) Dopamine is uncaged from (N)-1-(2 nitrophenyl) ethylcarboxy-3,4-dihydroxyphenethylamine (NPEC) upon blue light (UV) exposure. (b) Confocal images of representative D1DR-expressing HEK293 cells with endogenous PKA-cat-GFP and Nb6B9-mApple expression, incubated with 1 μ M NPEC-caged dopamine and at indicated times after blue light exposure (n = 46 cells, four biological replicates). Arrowhead indicates Nb6B9 recruitment to

Figure 6 continued on next page

Figure 6 continued

the Golgi membrane; scale bar = 10 μm . (c) Normalized fluorescence intensity of Nb6B9-mApple and PKAcat relative to Golgi-D1DR after blue light exposure.

The online version of this article includes the following video for figure 6:

Figure 6—video 1. Confocal image series of D1DR-expressing (magenta) HEK293 cells with endogenous PKA-cat-GFP (cyan) and Nb6B9-mApple (orange), incubated with 1 μM (N)-1-(2 nitrophenyl) ethylcarboxy-3,4-dihydroxyphenethylamine (NPEC)-caged dopamine.

<https://elifesciences.org/articles/75468/figures#fig6video1>

Figure 6—video 1). These data further support the notion that Golgi-localized D1DR activates PKA locally.

Discussion

Our findings demonstrate for the first time that dopaminergic receptors can signal from the Golgi apparatus. We present evidence that DA, a hydrophilic catecholamine, can be transported to the Golgi membrane to reach the preexisting Golgi pool of D1DRs. This transport is facilitated by OCT2. The Golgi-D1DR comprises a functional signaling pool as it can activate *G α s* and stimulate cAMP production. Moreover, we introduced a new approach to selectively interrogate compartmentalized D1DR signaling by inhibiting *G α s* coupling using a nanobody-based chemical recruitment system. Finally, utilizing caged-DA, we showed that photo-release of DA at the Golgi upon rapid blue light exposure triggers D1DR-mediated cAMP production and local PKA activation.

As the signaling activities of D1DR have thus far been thought to be limited to the plasma membrane, substantial efforts have been focused on designing small-molecule agonists of D1DR to bias signaling towards a particular signaling pathway, without the consideration of spatial D1DR signaling (Jin et al., 2003; Kuroiwa et al., 2008; Panchalingam and Undie, 2001; Undie et al., 1994). Our findings on D1DR signaling from the Golgi membrane suggest location bias as an overlooked aspect of signaling specificity. This study demonstrates the important role of local generation of cAMP by GPCRs in controlling local PKA activation at specific subcellular compartments. It is well established that cAMP-mediated signaling specificity depends on the function of compartment-specific phosphodiesterases, enzymes that degrade cAMP, limiting the diffusion of this second messenger (Agarwal et al., 2011; Buxton and Brunton, 1983; Gold et al., 2013; Musheshe et al., 2018; Steinberg and Brunton, 2001; Warriar et al., 2007). Recent measurements of cAMP mobility suggest a nanometer-scale diffusion domain (Anton et al., 2022; Bock et al., 2020; Saucerman et al., 2014). The model where cAMP generation by plasma membrane-localized receptors propagates in a linear fashion to then control intracellular effectors of cAMP is inconsistent with the nanometer scale of cAMP diffusion range within the cell (Agarwal et al., 2016; Saucerman et al., 2014; Zaccolo et al., 2021). Thus, our data further provide evidence that PKA activation at a specific compartment requires GPCR activation locally in the vicinity of that compartment. Given that each subcellular membrane compartment has a distinct lipid environment (Balla, 2013), it is likely that PKA activation at each location will recruit a unique set of effectors and proteins and regulates distinct signaling and physiological outcomes. The importance of local generation of cAMP by Golgi-localized GPCR has been demonstrated for β 1AR. Nash et al. have demonstrated that activated Golgi- β 1ARs only, but not the plasma membrane pool, lead to PLC ϵ activation at the perinuclear/Golgi membrane, which mediates hypertrophic responses in cardiomyocytes (Irannejad et al., 2017; Nash et al., 2019). Whether distinct signaling pathways are regulated by plasma membrane or Golgi-localized D1DR is not yet clear.

Published studies suggest that OCT2 is expressed in a number of tissues and cell types that also express D1DRs (Arnsten et al., 1995; Busch et al., 1998; Double and Crocker, 1995). Interestingly, however, there are D1DR-expressing cell types that do not express OCT2. For instance, we found that within the brain OCT2 is highly expressed in the striatum and moderately in the cortex. In contrast, OCT2 has little to no expression in the hippocampus or substantia nigra (Figure 3—figure supplement 1a; Amphoux et al., 2006; Busch et al., 1998). We also showed that OCT2 is expressed in MSNs in the striatum (Figure 3—figure supplement 1d). Consistent with this, we have further shown that DA activates Golgi pool of D1DR in MSNs (Figure 3). Moreover, we showed that activation of the D1DR at the Golgi, but not the plasma membrane, results in PKA activation at the perinuclear/Golgi region (Figure 5). This could potentially explain some of the distinct cAMP/PKA signaling patterns

that have been observed in different D1DR-expressing neurons. For instance, cAMP-dependent PKA responses have been shown to be sustained in striatal neurons compared to pyramidal cortical neurons (Castro et al., 2013). Therefore, we speculate that the expression pattern of OCT2 and activation of the Golgi-pool of D1DRs may be a determinant of which cell types and tissues exhibit sustained cAMP/PKA signaling.

D1DR-mediated cAMP signaling regulates major brain functions. Persistent DA stimulation and sustained receptor activation cause long-term changes in gene expression of neuronal plasticity-related genes, dendritic remodeling, and locomotor sensitization (Gerfen et al., 1990; Le Moine and Bloch, 1995; Lüscher and Malenka, 2011; Zhang et al., 2006). Many drugs of abuse increase the release of DA and elevate the firing rate of midbrain dopaminergic neurons in the striatum, particularly MSNs (Di Chiara and Imperato, 1988; Lüscher and Malenka, 2011; Nestler and Luscher, 2019). Whether this sustained receptor-mediated cAMP/PKA activation in MSNs is a consequence of D1DR activation at the Golgi is not clear, but strongly suggested by our findings. Understanding the contribution of D1DR subcellular signaling could potentially help with drug development for disorders where dopaminergic signaling is misregulated.

There are two major DA uptake transport mechanisms: (i) uptake 1 transporters that have high affinity for DA and are mostly localized in presynaptic neurons, and (ii) uptake 2 transporters that have low affinity but high capacity for DA and are expressed in various brain regions as well as different organs in the body (Gründemann et al., 1998; Lin et al., 2011; Nies et al., 2011; Reith et al., 2006; Torres et al., 2003). OCT2 belongs to the uptake 2 transporter family and has been previously thought to mainly function as an uptake transporter, helping with the clearance of extracellular DA and terminating DA-mediated signaling pathways (Amphoux et al., 2006; Bednarczyk et al., 2003; Busch et al., 1998; Taubert et al., 2007). Unlike uptake 1 transporters, uptake 2 transporters can transport catecholamines, including DA, across the membrane, in a bidirectional and electrogenic manner, and independent of Na⁺ and Cl⁻ transport (Nies et al., 2011; Schomig et al., 2006). Previous reports have demonstrated that OCTs, particularly OCT3, are localized on both the plasma membrane and subcellular membranes including the outer nuclear membranes near the Golgi (Gasser, 2021; Gasser et al., 2017). We showed that OCT2 is expressed on both the plasma membrane and the Golgi membranes in HeLa cells and MSNs (Figure 2—figure supplement 1d, Figure 3—figure supplement 1d). As OCT2 is a member of an electrogenic and bidirectional transporter, we speculate that the plasma membrane OCT2 facilitates the transport of DA from the extracellular environment to the cytoplasm and the intracellular-localized OCT2 might facilitate DA transport into the Golgi. Given that the resting membrane potential of inner nuclear membrane (~-100 mV) (Burdakov et al., 2005; Matamala et al., 2021; Sanchez et al., 2018) has been reported to be more negative relative to that of the cytoplasmic side of the plasma membrane (~-40 to -70 mV), it is plausible that, just as the transport of DA from the extracellular space into the cytoplasm by OCT2 takes advantage of the electrogenic gradient, a similar gradient allows for transport of DA from the cytoplasm across the nuclear envelope which is connected to the lumen of the Golgi membrane.

Accurate measurements of cytoplasmic DA in intact pre- or postsynaptic neurons have been challenging due to lack of sensitivity of most analytical methods and their effects on cell viability (Chang et al., 2021; Olefirowicz and Ewing, 1990; Post and Sulzer, 2021). However, given that DA is present at high millimolar concentrations within the synaptic vesicles (Omiatek et al., 2013; Zhang et al., 2020), it is likely that rapid uptake of DA post release will result in high cytoplasmic DA concentrations. With DA as the substrate, Km measurements ranging from 2 to 46 μM have been reported for OCT2 transporters (Amphoux et al., 2006; Gasser, 2021; Gründemann et al., 1998; Schomig et al., 2006). Thus, as a low-affinity but high-capacity transporter, subcellular OCT2 is likely to encounter high concentrations of cytoplasmic DA under physiological conditions (Wiencke et al., 2020). Based on the calculated rate constant for OCT2 in vivo and the known water space of average cells, cytoplasmic concentrations of DA at equilibrium are thought to be ~10-fold higher compared to the extracellular concentrations (Gründemann et al., 1998). For instance, Grundemann et al. have shown that addition of 100 nM DA in the extracellular environment of OCT2-expressing cells results in the accumulation of 4 pmol/mg in cells after 10 min. If we consider the average weight of a cell to be around 1 ng, and the average volume of a cell to be around 4 pL, this calculation will give us close to 1 μM DA accumulation in the cytoplasm, which is 10-fold higher than the added extracellular concentration (Gründemann et al., 1998). We found that the requirement for OCT2 in activating Golgi-localized D1DRs is seen

even at low concentrations of exogenously added DA (10 nM) (**Figure 1—figure supplement 3**). Notably, knockdown or inhibition of OCT2 abrogated Golgi-localized D1DR signaling (**Figures 2 and 3**), highlighting the specificity of OCT2 in this signaling regulation.

The present results expand the concept of GPCR-compartmentalized signaling and open additional interesting questions for further studies regarding mechanisms that regulate subcellular activity of other monoamine receptors such as 5-HT (serotonin) and histamine receptors by other monoamine transporters (*Lin et al., 2011; Torres et al., 2003*). Establishing GPCR signaling from subcellular compartments is the first step in unraveling the physiological consequences of compartmentalized signaling for each GPCR family member.

Materials and methods

Key resources table

Reagent type (species) or resource	Designation	Source or reference	Identifiers	Additional information
Cell line (<i>Homo sapiens</i>)	HEK293	ATCC	CRL-1573.3	Mycoplasma tested negative
Cell line (<i>H. sapiens</i>)	HEK293T	ATCC	ACS-4500	Mycoplasma tested negative
Cell line (<i>H. sapiens</i>)	HeLa	ATCC	CRM-CCL-2	Mycoplasma tested negative
Antibody	Anti-dopamine receptor D1 (rabbit polyclonal)	Abcam	ab216644	IF (1:100)
Antibody	Anti-GM130 (mouse monoclonal)	BD Biosciences	610822	IF (1:1000)
Antibody	Anti-SLC22A2 (rabbit polyclonal)	Abcam	ab170871	WB (1:1000)
Antibody	Anti-SLC22A2 (rabbit polyclonal)	ABclonal	A14061	IF (1:100)
Antibody	Anti-GAPDH (mouse monoclonal)	Proteintech	60004-1	WB (1:10,000)
Antibody	Anti-HRP-conjugated IgG (rabbit polyclonal)	GE Healthcare	P132460	WB (1:10000)
Antibody	Anti-mouse IgG (donkey polyclonal)	Thermo Fisher	A32766	IF (1:10,000)
Antibody	Anti-rabbit IgG (donkey polyclonal)	Thermo Fisher	A32794	IF (1:10,000)
Antibody	Anti-dopamine receptor D1 (rabbit polyclonal)	Proteintech	17934-1-AP	IF (1:100)
Peptide, recombinant protein	D1DR blocking peptide	Proteintech	Ag12366	IF (1:25)
Chemical compound, drug	Snap-Cell 647	NEB	S9102S	
Chemical compound, drug	Dopamine hydrochloride	Sigma	200-527-8	
Chemical compound, drug	SKF81297 hydrobromide	Tocris	1447	
Chemical compound, drug	NPEC-caged-dopamine	Tocris	3992	
Chemical compound, drug	A/C heterodimerizer	Takara	635056	
Chemical compound, drug	Dyngo	Abcam	ab120689	
Chemical compound, drug	Forskolin	Sigma	F6886-10MG	
Chemical compound, drug	Imipramine	Sigma	113-52-0	
Chemical compound, drug	Corticosterone	Sigma	200-019-6	
Software, algorithm	Prism	GraphPad		
Software, algorithm	ImageJ	Imagej.net/contributors		

Continued on next page

Reagent type (species) or resource	Designation	Source or reference	Identifiers	Additional information
Software, algorithm	MATLAB R2014b	MathWorks	DOI:10.5281/ zenodo.5146169	Bakr et al., 2021
Recombinant DNA reagent	pGloSensor-20F	Promega	E1171	
Recombinant DNA reagent	Signal sequence Snap-D1DR	This study		pCDNA3 backbone; snap vector, see Materials and methods
Recombinant DNA reagent	pVenus-FRB-Nb6B9	This study		pVenus-C1 vector, see Materials and methods
Recombinant DNA reagent	FKBP-GalT-mApple	This study		pm-Apple-M1 vector, see Materials and methods
Recombinant DNA reagent	Lyn-2xFKBP-CFP	Addgene	20149	
Recombinant DNA reagent	pCAG-Snap-D1DR	This study		pCAG vector, see Materials and methods
Recombinant DNA reagent	pCAG-Nb6B9-GFP pCAG-Nb37-GFP	This study		pCAG vector, see Materials and methods
Sequence-based reagent	SLC22A2 shRNAs	OriGene	TL517269	pGFP-C-shLenti
Sequence-based reagent	Scamble shRNAs	OriGene	TR30021	pGFP-C-shLenti
Biological sample (<i>Mus musculus</i> , male and female)	CD1	Charles Rivers	Crl:CD1(ICR)	Isolated medium spiny neurons from neonatal mouse striatal, see Material and methods

Cell culture, cDNA constructs, and transfection

HeLa and HEK293 cells (purchased from ATCC as authenticated lines CCL-2, CRL-1573 and CRL 1446, respectively) were grown in Dulbecco's minimal essential medium supplemented with 10% fetal bovine serum (FBS) without antibiotics. Cell cultures were free of mycoplasma contamination. Signal Sequence-Snap-tagged D1DR was created by amplifying D1DR from Flag-D1DR using 5'-GCCTGGGCTGGGTCTTGGATCCGATGACGCCATGGACG -3'; 5'-ATAGGGCCCTCTAGAGCCTCAGGTGGGTGCTG-3' primers, and inserted into the Snap vector using BamHI and XbaI. pVenus-FRB-Nb6B9 was created by amplifying Nb6B9 and FRB from Nb6B9-GFP (*Irannejad et al., 2017*), and pC₄-R_HE plasmid (ARIAD Pharmaceuticals), using 5'-TGGTGGACAGGTGCAGCT-3'; 5'-GGATCCTC ATGAGGAGACGGTGACCTGGGT-3' and 5'-GCTTCGAATTCAATCCTCTGGCAT-3'; 5'-TGCACCTGTC CACCAGCACTA-3 primers, respectively, such that it contained the linker sequence GATAGTGCTGGT AGTGCTGGTGGAC, and inserted into the pVenus-C1 vector using EcoRI and BamHI. FKBP-GalT-mApple was created by amplifying FKBP and GalT from KDELR-FKBP and GalT-mCherry plasmids (a generous gift from Dr.Farese lab), using 5'-CATGCTAGCGCCGCCACCATGGGAGTGCAGGTGGAA ACCAT-3'; 5'-GAGCTCGAGACCAGCACTACCAGCACTATCCTCCAGCTTCAGCAGCTCCACG3' and 5'-GCTCAAAGCTTGCCGCCACCGGAAGGCTTCGGGAGCCG-3'; 5'-ACCGGATCCTTAGGCCCTC CGGTCCGGAGCTCCCCG-3' primers, respectively, and inserted into the pmApple-N1 vector using NheI, XhoI for FKBP and HindIII and BamHI for GalT (*Irannejad et al., 2017*). Transfections were performed using Lipofectamine 2000 (Invitrogen) according to the manufacturer's instructions. Snap-tagged human D1DR constructs were labeled with Snap-cell 647 SiR (New England Biolabs, S9102S) as described previously (*Lukinavičius et al., 2013*).

Isolation of murine striatal neurons

Primary striatal neurons were prepared from P1-P2 CD1 pups. In brief, striatum tissues isolated from brains in cold HBSS (w/o Mg²⁺, Ca²⁺, and phenol-red) buffer with 10 mM HEPES were treated by HBSS with 0.25% Trypsin and 10 mM HEPES buffer at 37°C for 15 min. The digested striatum tissues were rinsed by neural plating media (DMEM with 10% FBS, 30 mM HEPES, and PS) twice, and then dissociated by trituration using fire-polished Pasteur pipet in neural plating media. Suspended cells that pass through a 40 µm strainer were collected by centrifuging at 350 × g for 5 min. Cells were plated at 10³ cells per mm² on the 100 µg/mL poly-D-lysine (Sigma)-coated imaging dishes or coverslips in neural plating media. After 16–24 hr, the culture media were replaced by neural differentiation media

(Neural basal media with 10 mM GlutaMAX, B27, and PS). The 50% media were replaced by fresh neural differentiation media every 3–4 days.

Live-cell confocal imaging

Live-cell imaging was carried out using Nikon spinning disk confocal microscope with a $\times 60$, 1.4 numerical aperture, oil objective and a CO₂ and 37°C temperature-controlled incubator. A 488, 568 nm and 640 Voltran was used as light sources for imaging GFP, mRFP/mApple, and Snap-647 signals, respectively. Cells expressing both Snap-tagged receptor (2 μ g) and the indicated nanobody-GFP (200 ng) were plated onto glass coverslips. Receptors were surface labeled by addition of Snap-Cell 647 SiR (1:1000, New England Biolabs) to the media for 20 min, as described previously. Live-cell images where endocytosis was inhibited were carried out by incubating the cells in 30 μ M Dyngo 4a (ab120689) at 37°C for 30 min before indicated agonist was added. HEK293 PKA-Cat-GFP knock-in cells were a generous gift from the Huang Lab. Indicated agonists (dopamine hydrochloride [Sigma], SKF81297 hydrobromide [Tocris]) were added and cells were imaged every 20 s for 20 min in DMEM without phenol red supplemented with 30 mM HEPES, pH 7.4. NPEC-caged-dopamine (Tocris) was incubated for 10 min before cells were stimulated with 3.2 μ W/cm² blue light. Time-lapse images were acquired with a CMOS camera (Photometrics) driven by Nikon Imaging Software (NS Elements).

Fixed-cell confocal imaging

Cells were permeabilized with saponin to reduce the cytoplasmic background, as described previously (**Lober and Stenmark, 2012**). Briefly, HeLa cells were permeabilized with 0.05% saponin (Sigma) in PEM buffer (80 mM K-Pipes, pH 6.8, 5 mM EGTA, 1 mM MgCl₂) for 5 min on ice. Cells were then fixed with 3% paraformaldehyde in PBS for 10 min and then quenched with 50 mM NH₄Cl in PBS for 15 min. Primary antibodies D1DR antibody (ab216644) (1:100), D1DR (Proteintech 17934-1AP) (1:100) with or without D1DR blocking peptide (Proteintech Ag12366) (1:25), GM130 (BD Biosciences 610822) (1:1000), and SLC22A2/OCT2 antibody (ab170871) or SLC22A2/OCT2 (ABClonal-A14061) (1:100), were diluted in PBS supplemented with 0.05% saponin. Striatal neurons at DIV5 were fixed by 3.7% formaldehyde in PEM buffer for 15 min and then permeabilized by 0.3% Triton in PBS for 5 min at room temperature. D1DR and GM130 antibodies were diluted in TBS with 5% donkey serum and 0.1% Triton X-100. Confocal images were taken using Nikon spinning disk confocal microscope with a 60 \times 1.4 numerical aperture, oil objective.

Image analysis and statistical analysis

Images were saved as 16-bit TIFF files. Quantitative image analysis was carried out on unprocessed images using ImageJ software (<http://rsb.info.nih.gov/ij>). For measuring kinetics of Nb6B9-GFP and miniGs recruitment at the Golgi membrane over time in confocal images and kinetics of PKA-Cat GFP dissociation from the Golgi, analyses were performed on unprocessed TIFF images using a previously published scripts written in MATLAB, available through open access on zenodo (**Bakr et al., 2021; Jullié et al., 2020**). Briefly, the Golgi region was selected and a mask of labeled receptor (using Snap label) or Golgi marker were generated by thresholding the receptor or the Golgi marker signal within the selected region. The average fluorescence intensity of Nb6B9 or miniG were measured within the masked region and outside of the masked region, before and after addition of agonists. Values were normalized by calculating the percent relative to the maximum value, then baseline corrected using Prism 6.0 software so that the first value of each condition was set to 0. The same MATLAB script was used to analyze the dose-response kinetics of both Nb6B9-GFP and miniGs-mApple recruitment to the Golgi membrane in response to increasing concentrations of agonists. In this case, to better quantify the increase in fluorescence at the Golgi after addition of agonist, values were normalized to the baseline following each addition of agonist. This was done in Microsoft Excel, and each baseline value was set to 1 to measure the fold change in fluorescence. Colocalization analysis at the Golgi was estimated by calculating the Pearson's coefficient between the indicated image channels with the Golgi marker channel using the colocalization plug-in for ImageJ (Coloc2). p-Values are from two-tailed unpaired Student's *t*-tests calculated using Prism 6.0 software (GraphPad Software).

Luminescence-based cAMP assay

HEK293 cells stably expressing D1DR were transfected with a plasmid encoding a cyclic-permuted luciferase reporter construct (pGloSensor-20F, Promega) and luminescence values were measured, as described previously (Irannejad *et al.*, 2013). Briefly, cells were plated in 96-well dishes (~100,000 cells per well) in 500 μ L DMEM without phenol red/no serum and equilibrated to 37°C in the SpectraMax plate reader and luminescence was measured every 1.5 min. Software was used to calculate integrated luminescence intensity and background subtraction. In rapamycin heterodimerization experiments, cells were pre-incubated with 1 μ M A/C heterodimerizer, a rapamycin analog (Takara 635056) for 15 min. 5 μ M forskolin was used as a reference value in each multi-well plate and for each experimental condition. The average luminescence value (measured across duplicate wells) was normalized to the maximum luminescence value measured in the presence of 5 μ M forskolin. For rapamycin-treated cells, the average luminescence value was normalized to the maximum luminescence value measured in the presence of 5 μ M forskolin and 1 μ M rapamycin.

Western blotting

Cells from HEK293, HEK293T, and HeLa were lysed in extraction buffer (0.2% Triton X-100, 50 mM NaCl, 5 mM EDTA, 50 mM Tris at pH 7.4 and cOmplete EDTA-free Protease Inhibitor Cocktail [Roche]). Kidney and neural tissues from B6 adult mice were disrupted in RIPA buffer (50 mM Tris at pH 7.4, 150 mM NaCl, 1 mM EDTA, 1% Triton X-100, 1% sodium deoxycholate 0.1% SDS, and cOmplete EDTA-free Protease Inhibitor Cocktail). After agitation at 4°C for 30 min, supernatants of samples were collected after centrifuging at 15,000 \times rpm for 10 min at 4°C. Supernatants were mixed with SDS sample buffer for the protein denaturation. The proteins were resolved by SDS-PAGE and transferred to PVDF membrane and blotted for anti-SLC22A2 (ab170871, 1:1000) or GAPDH (1:10,000) antibodies to detect OCT2 and GAPDH expression by horseradish-peroxidase-conjugated rabbit IgG, sheep anti-mouse and rabbit IgG (1:10,000 Amersham Biosciences), and SuperSignal extended duration detection reagent (Pierce).

Acknowledgements

We thank D Jullie, K Silm, AB Lobingier, A Manglik, E Hernandez, and D Larsen for assistance, advice, and valuable discussion. These studies were supported by the National Institute on General Medicine (GM133521) to RI and The American Heart Association (908933) to NP.

Additional information

Funding

Funder	Grant reference number	Author
NIH Office of the Director	GM133521	Roshanak Irannejad
The American Heart Association	908933	Natasha M Puri

The funders had no role in study design, data collection and interpretation, or the decision to submit the work for publication.

Author contributions

Natasha M Puri, Conceptualization, Data curation, Formal analysis, Investigation, Methodology, Validation, Visualization, Writing - original draft, Writing - review and editing; Giovanna R Romano, Formal analysis, Investigation, Software, Validation, Visualization; Ting-Yu Lin, Formal analysis, Methodology, Validation, Visualization, Writing - review and editing; Quynh N Mai, Data curation, Formal analysis, Methodology, Validation, Visualization, Writing - review and editing; Roshanak Irannejad, Conceptualization, Formal analysis, Funding acquisition, Investigation, Methodology, Software, Supervision, Validation, Writing - original draft, Writing - review and editing

Author ORCIDs

Natasha M Puri  <http://orcid.org/0000-0002-4290-4361>
Quynh N Mai  <http://orcid.org/0000-0002-6199-2096>

Roshanak Irannejad  <http://orcid.org/0000-0001-8702-2285>

Ethics

Animal tissues from mice were isolated as recommended and approved by the institutional animal care and use committee (IACUC protocol #AN184251).

Decision letter and Author response

Decision letter <https://doi.org/10.7554/eLife.75468.sa1>

Author response <https://doi.org/10.7554/eLife.75468.sa2>

Additional files

Supplementary files

- Transparent reporting form
- Source data 1. Source data of all figures and figure supplements are combined in one file, separated and labeled accordingly in each tab.

Data availability

Source Data has been provided for Figures 1c, 1d, 2b, 2c, 2f, 2g, 3c, 4d, 4f, 5c and 6c as well as Figures 1-Figure Supplement 1b-d, Figure 1-Figure Supplement 3b, Figure 1-Figure Supplement 4c, Figure 2-Figure Supplement 1a-b, Figure 3-Figure Supplement 1a. We have also included information for primers, shRNAs and plasmid maps. Antibodies, cells and reagents are also provided in the source data.

References

- Agarwal SR**, MacDougall DA, Tyser R, Pugh SD, Calaghan SC, Harvey RD. 2011. Effects of cholesterol depletion on compartmentalized cAMP responses in adult cardiac myocytes. *Journal of Molecular and Cellular Cardiology* **50**:500–509. DOI: <https://doi.org/10.1016/j.yjmcc.2010.11.015>, PMID: 21115018
- Agarwal SR**, Clancy CE, Harvey RD. 2016. Mechanisms Restricting Diffusion of Intracellular cAMP. *Scientific Reports* **6**:19577. DOI: <https://doi.org/10.1038/srep19577>, PMID: 26795432
- Alburges ME**, Hunt ME, McQuade RD, Wamsley JK. 1992. D1-receptor antagonists: comparison of [3H]SCH39166 to [3H]SCH23390. *Journal of Chemical Neuroanatomy* **5**:357–366. DOI: [https://doi.org/10.1016/0891-0618\(92\)90051-q](https://doi.org/10.1016/0891-0618(92)90051-q), PMID: 1358117
- Amphoux A**, Vialou V, Drescher E, Brüss M, Mannoury La Cour C, Rochat C, Millan MJ, Giros B, Bönisch H, Gautron S. 2006. Differential pharmacological in vitro properties of organic cation transporters and regional distribution in rat brain. *Neuropharmacology* **50**:941–952. DOI: <https://doi.org/10.1016/j.neuropharm.2006.01.005>, PMID: 16581093
- Anton SE**, Kayser C, Maiellaro I, Nemeč K, Möller J, Koschinski A, Zaccolo M, Annibale P, Falcke M, Lohse MJ, Bock A. 2022. Receptor-associated independent cAMP nanodomains mediate spatiotemporal specificity of GPCR signaling. *Cell* **185**:1130–1142. DOI: <https://doi.org/10.1016/j.cell.2022.02.011>, PMID: 35294858
- Ariano MA**, Sortwell CE, Ray M, Altemus KL, Sibley DR, Levine MS. 1997. Agonist-induced morphologic decrease in cellular D1A dopamine receptor staining. *Synapse (New York, N.Y.)* **27**:313–321. DOI: [https://doi.org/10.1002/\(SICI\)1098-2396\(199712\)27:4<313::AID-SYN5>3.0.CO;2-F](https://doi.org/10.1002/(SICI)1098-2396(199712)27:4<313::AID-SYN5>3.0.CO;2-F), PMID: 9372554
- Arnsten AF**, Cai JX, Steere JC, Goldman-Rakic PS. 1995. Dopamine D2 receptor mechanisms contribute to age-related cognitive decline: the effects of quinpirole on memory and motor performance in monkeys. *The Journal of Neuroscience* **15**:3429–3439. DOI: <https://doi.org/10.1523/JNEUROSCI.15-05-03429.1995>, PMID: 7751922
- Bacq A**, Balasse L, Biala G, Guiard B, Gardier AM, Schinkel A, Louis F, Vialou V, Martres M-P, Chevarin C, Hamon M, Giros B, Gautron S. 2012. Organic cation transporter 2 controls brain norepinephrine and serotonin clearance and antidepressant response. *Molecular Psychiatry* **17**:926–939. DOI: <https://doi.org/10.1038/mp.2011.87>, PMID: 21769100
- Bakr M**, Jullié D, Krapivkina J, Paget-Blanc V, Bouit L, Petersen JD, Retailleau N, Breillat C, Herzog E, Choquet D, Perrais D. 2021. The vSNAREs VAMP2 and VAMP4 control recycling and intracellular sorting of post-synaptic receptors in neuronal dendrites. *Cell Reports* **36**:109678. DOI: <https://doi.org/10.1016/j.celrep.2021.109678>, PMID: 34496238
- Balla T**. 2013. Phosphoinositides: tiny lipids with giant impact on cell regulation. *Physiological Reviews* **93**:1019–1137. DOI: <https://doi.org/10.1152/physrev.00028.2012>, PMID: 23899561
- Beaulieu JM**, Espinoza S, Gainetdinov RR. 2015. Dopamine receptors - IUPHAR Review 13. *British Journal of Pharmacology* **172**:1–23. DOI: <https://doi.org/10.1111/bph.12906>
- Bednarczyk D**, Ekins S, Wikel JH, Wright SH. 2003. Influence of molecular structure on substrate binding to the human organic cation transporter, hOCT1. *Molecular Pharmacology* **63**:489–498. DOI: <https://doi.org/10.1124/mol.63.3.489>

- Bloch B**, Bernard V, Dumartin B. 2003. In vivo" intraneuronal trafficking of G protein coupled receptors in the striatum: regulation by dopaminergic and cholinergic environment. *Biology of the Cell* **95**:477–488. DOI: [https://doi.org/10.1016/s0248-4900\(03\)00080-7](https://doi.org/10.1016/s0248-4900(03)00080-7)
- Bock A**, Annibale P, Konrad C, Hannawacker A, Anton SE, Maiellaro I, Zabel U, Sivaramakrishnan S, Falcke M, Lohse MJ. 2020. Optical Mapping of cAMP Signaling at the Nanometer Scale. *Cell* **182**:1519–1530. DOI: <https://doi.org/10.1016/j.cell.2020.07.035>, PMID: 32846156
- Boivin B**, Lavoie C, Vaniotis G, Baragli A, Villeneuve L-R, Ethier N, Trieu P, Allen BG, Hébert TE. 2006. Functional beta-adrenergic receptor signalling on nuclear membranes in adult rat and mouse ventricular cardiomyocytes. *Cardiovascular Research* **71**:69–78. DOI: <https://doi.org/10.1016/j.cardiores.2006.03.015>, PMID: 16631628
- Bowman SL**, Shiwarski DJ, Puthenveedu MA. 2016. Distinct G protein-coupled receptor recycling pathways allow spatial control of downstream G protein signaling. *The Journal of Cell Biology* **214**:797–806. DOI: <https://doi.org/10.1083/jcb.201512068>, PMID: 27646272
- Burdakov D**, Petersen OH, Verkhratsky A. 2005. Intraluminal calcium as a primary regulator of endoplasmic reticulum function. *Cell Calcium* **38**:303–310. DOI: <https://doi.org/10.1016/j.ceca.2005.06.010>, PMID: 16076486
- Busch AE**, Karbach U, Miska D, Gorboulev V, Akhoundova A, Volk C, Arndt P, Ulzheimer JC, Sonders MS, Baumann C, Waldegger S, Lang F, Koepsell H. 1998. Human neurons express the polyspecific cation transporter hOCT2, which translocates monoamine neurotransmitters, amantadine, and memantine. *Molecular Pharmacology* **54**:342–352. DOI: <https://doi.org/10.1124/mol.54.2.342>, PMID: 9687576
- Buxton IL**, Brunton LL. 1983. Compartments of cyclic AMP and protein kinase in mammalian cardiomyocytes. *The Journal of Biological Chemistry* **258**:10233–10239. DOI: [https://doi.org/10.1016/S0021-9258\(17\)44447-4](https://doi.org/10.1016/S0021-9258(17)44447-4), PMID: 6309796
- Calebiro D**, Nikolaev VO, Lohse MJ. 2010. Imaging of persistent cAMP signaling by internalized G protein-coupled receptors. *Journal of Molecular Endocrinology* **45**:1–8. DOI: <https://doi.org/10.1677/JME-10-0014>, PMID: 20378719
- Calebiro D**, Koszegi Z. 2019. The subcellular dynamics of GPCR signaling. *Molecular and Cellular Endocrinology* **483**:24–30. DOI: <https://doi.org/10.1016/j.mce.2018.12.020>, PMID: 30610913
- Cancino J**, Capalbo A, Di Campli A, Giannotta M, Rizzo R, Jung JE, Di Martino R, Persico M, Heinklein P, Sallèse M, Luini A. 2014. Control systems of membrane transport at the interface between the endoplasmic reticulum and the Golgi. *Developmental Cell* **30**:280–294. DOI: <https://doi.org/10.1016/j.devcel.2014.06.018>, PMID: 25117681
- Castro LRV**, Brito M, Guiot E, Polito M, Korn CW, Hervé D, Girault J-A, Paupardin-Tritsch D, Vincent P. 2013. Striatal neurones have a specific ability to respond to phasic dopamine release. *The Journal of Physiology* **591**:3197–3214. DOI: <https://doi.org/10.1113/jphysiol.2013.252197>, PMID: 23551948
- Chang Y**, Chen Y, Shao Y, Li B, Wu Y, Zhang W, Zhou Y, Yu Z, Lu L, Wang X, Guo G. 2021. Solid-phase microextraction integrated nanobiosensors for the serial detection of cytoplasmic dopamine in a single living cell. *Biosensors & Bioelectronics* **175**:112915. DOI: <https://doi.org/10.1016/j.bios.2020.112915>, PMID: 33383431
- Chung KY**, Rasmussen SGF, Liu T, Li S, DeVree BT, Chae PS, Calinski D, Kobilka BK, Woods VL, Sunahara RK. 2011. Conformational changes in the G protein Gs induced by the β 2 adrenergic receptor. *Nature* **477**:611–615. DOI: <https://doi.org/10.1038/nature10488>, PMID: 21956331
- Di Chiara G**, Imperato A. 1988. Drugs abused by humans preferentially increase synaptic dopamine concentrations in the mesolimbic system of freely moving rats. *PNAS* **85**:5274–5278. DOI: <https://doi.org/10.1073/pnas.85.14.5274>, PMID: 2899326
- Double KL**, Crocker AD. 1995. Dopamine receptors in the substantia nigra are involved in the regulation of muscle tone. *PNAS* **92**:1669–1673. DOI: <https://doi.org/10.1073/pnas.92.5.1669>, PMID: 7878037
- Feinstein TN**, Yui N, Webber MJ, Wehbi VL, Stevenson HP, King JD, Hallows KR, Brown D, Bouley R, Vilardaga J-P. 2013. Noncanonical control of vasopressin receptor type 2 signaling by retromer and arrestin. *The Journal of Biological Chemistry* **288**:27849–27860. DOI: <https://doi.org/10.1074/jbc.M112.445098>, PMID: 23935101
- Felder RA**, Seikaly MG, Cody P, Eisner GM, Jose PA. 1990. Attenuated renal response to dopaminergic drugs in spontaneously hypertensive rats. *Hypertension (Dallas, Tex.: 1979)* **15**:560–569. DOI: <https://doi.org/10.1161/01.hyp.15.6.560>
- Feng S**, Sekine S, Pessino V, Li H, Leonetti MD, Huang B. 2017. Improved split fluorescent proteins for endogenous protein labeling. *Nature Communications* **8**:370. DOI: <https://doi.org/10.1038/s41467-017-00494-8>, PMID: 28851864
- Ferrandon S**, Feinstein TN, Castro M, Wang B, Bouley R, Potts JT, Gardella TJ, Vilardaga J-P. 2009. Sustained cyclic AMP production by parathyroid hormone receptor endocytosis. *Nature Chemical Biology* **5**:734–742. DOI: <https://doi.org/10.1038/nchembio.206>, PMID: 19701185
- Gasser PJ**, Hurley MM, Chan J, Pickel VM. 2017. Organic cation transporter 3 (OCT3) is localized to intracellular and surface membranes in select glial and neuronal cells within the basolateral amygdaloid complex of both rats and mice. *Brain Structure & Function* **222**:1913–1928. DOI: <https://doi.org/10.1007/s00429-016-1315-9>, PMID: 27659446
- Gasser PJ**, Lowry CA. 2018. Organic cation transporter 3: A cellular mechanism underlying rapid, non-genomic glucocorticoid regulation of monoaminergic neurotransmission, physiology, and behavior. *Hormones and Behavior* **104**:173–182. DOI: <https://doi.org/10.1016/j.yhbeh.2018.05.003>, PMID: 29738736

- Gasser PJ.** 2021. Organic Cation Transporters in Brain Catecholamine Homeostasis. Gasser PJ (Ed). *Handbook of Experimental Pharmacology*. Elsevier. p. 187–197. DOI: https://doi.org/10.1007/164_2021_470, PMID: [33987762](https://pubmed.ncbi.nlm.nih.gov/33987762/)
- Gerfen CR,** Engber TM, Mahan LC, Susel Z, Chase TN, Monsma FJ, Sibley DR. 1990. D1 and D2 dopamine receptor-regulated gene expression of striatonigral and striatopallidal neurons. *Science (New York, N.Y.)* **250**:1429–1432. DOI: <https://doi.org/10.1126/science.2147780>, PMID: [2147780](https://pubmed.ncbi.nlm.nih.gov/2147780/)
- Godbole A,** Lyga S, Lohse MJ, Calebiro D. 2017. Internalized TSH receptors en route to the TGN induce local G_s-protein signaling and gene transcription. *Nature Communications* **8**:443. DOI: <https://doi.org/10.1038/s41467-017-00357-2>, PMID: [28874659](https://pubmed.ncbi.nlm.nih.gov/28874659/)
- Gold MG,** Gonen T, Scott JD. 2013. Local cAMP signaling in disease at a glance. *Journal of Cell Science* **126**:4537–4543. DOI: <https://doi.org/10.1242/jcs.133751>, PMID: [24124191](https://pubmed.ncbi.nlm.nih.gov/24124191/)
- Gründemann D,** Köster S, Kiefer N, Breidert T, Engelhardt M, Spitzenberger F, Obermüller N, Schömig E. 1998. Transport of monoamine transmitters by the organic cation transporter type 2, OCT2. *The Journal of Biological Chemistry* **273**:30915–30920. DOI: <https://doi.org/10.1074/jbc.273.47.30915>, PMID: [9812985](https://pubmed.ncbi.nlm.nih.gov/9812985/)
- Hallett PJ,** Spoelgen R, Hyman BT, Standaert DG, Dunah AW. 2006. Dopamine D1 activation potentiates striatal NMDA receptors by tyrosine phosphorylation-dependent subunit trafficking. *The Journal of Neuroscience* **26**:4690–4700. DOI: <https://doi.org/10.1523/JNEUROSCI.0792-06.2006>, PMID: [16641250](https://pubmed.ncbi.nlm.nih.gov/16641250/)
- Honegger KJ,** Capuano P, Winter C, Bacic D, Stange G, Wagner CA, Biber J, Murer H, Hernando N. 2006. Regulation of sodium-proton exchanger isoform 3 (NHE3) by PKA and exchange protein directly activated by cAMP (EPAC). *PNAS* **103**:803–808. DOI: <https://doi.org/10.1073/pnas.0503562103>, PMID: [16407144](https://pubmed.ncbi.nlm.nih.gov/16407144/)
- Irannejad R,** Tomshine JC, Tomshine JR, Chevalier M, Mahoney JP, Steyaert J, Rasmussen SGF, Sunahara RK, El-Samad H, Huang B, von Zastrow M. 2013. Conformational biosensors reveal GPCR signalling from endosomes. *Nature* **495**:534–538. DOI: <https://doi.org/10.1038/nature12000>, PMID: [23515162](https://pubmed.ncbi.nlm.nih.gov/23515162/)
- Irannejad R,** von Zastrow M. 2014. GPCR signaling along the endocytic pathway. *Current Opinion in Cell Biology* **27**:109–116. DOI: <https://doi.org/10.1016/j.ceb.2013.10.003>, PMID: [24680436](https://pubmed.ncbi.nlm.nih.gov/24680436/)
- Irannejad R,** Tsvetanova NG, Lobingier BT, von Zastrow M. 2015. Effects of endocytosis on receptor-mediated signaling. *Current Opinion in Cell Biology* **35**:137–143. DOI: <https://doi.org/10.1016/j.ceb.2015.05.005>, PMID: [26057614](https://pubmed.ncbi.nlm.nih.gov/26057614/)
- Irannejad R,** Pessino V, Mika D, Huang B, Wedegaertner PB, Conti M, von Zastrow M. 2017. Functional selectivity of GPCR-directed drug action through location bias. *Nature Chemical Biology* **13**:799–806. DOI: <https://doi.org/10.1038/nchembio.2389>, PMID: [28553949](https://pubmed.ncbi.nlm.nih.gov/28553949/)
- Jean-Alphonse F,** Bowersox S, Chen S, Beard G, Puthenveedu MA, Hanyaloglu AC. 2014. Spatially restricted G protein-coupled receptor activity via divergent endocytic compartments. *The Journal of Biological Chemistry* **289**:3960–3977. DOI: <https://doi.org/10.1074/jbc.M113.526350>, PMID: [24375413](https://pubmed.ncbi.nlm.nih.gov/24375413/)
- Jensen DD,** Lieu T, Halls ML, Veldhuis NA, Imlach WL, Mai QN, Poole DP, Quach T, Aurelio L, Conner J, Herenbrink CK, Barlow N, Simpson JS, Scanlon MJ, Graham B, McCluskey A, Robinson PJ, Escriou V, Nassini R, Materazzi S, et al. 2017. Neurokinin 1 receptor signaling in endosomes mediates sustained nociception and is a viable therapeutic target for prolonged pain relief. *Science Translational Medicine* **9**:392. DOI: <https://doi.org/10.1126/scitranslmed.aal3447>, PMID: [28566424](https://pubmed.ncbi.nlm.nih.gov/28566424/)
- Jin LQ,** Goswami S, Cai G, Zhen X, Friedman E. 2003. SKF83959 selectively regulates phosphatidylinositol-linked D1 dopamine receptors in rat brain. *Journal of Neurochemistry* **85**:378–386. DOI: <https://doi.org/10.1046/j.1471-4159.2003.01698.x>, PMID: [12675914](https://pubmed.ncbi.nlm.nih.gov/12675914/)
- Jullié D,** Stoeber M, Sibarita J-B, Zieger HL, Bartol TM, Arttamangkul S, Sejnowski TJ, Hossy E, von Zastrow M. 2020. A Discrete Presynaptic Vesicle Cycle for Neuromodulator Receptors. *Neuron* **105**:663–677. DOI: <https://doi.org/10.1016/j.neuron.2019.11.016>, PMID: [31837915](https://pubmed.ncbi.nlm.nih.gov/31837915/)
- Kebabian JW.** 1978. Dopamine-sensitive adenyl cyclase: a receptor mechanism for dopamine. *Advances in Biochemical Psychopharmacology* **19**:131–154. PMID: [29445](https://pubmed.ncbi.nlm.nih.gov/29445/).
- Kim YC,** Alberico SL, Emmons E, Narayanan NS. 2015. New therapeutic strategies targeting D1-type dopamine receptors for neuropsychiatric disease. *Frontiers in Biology* **10**:230–238. DOI: <https://doi.org/10.1007/s11515-015-1360-4>, PMID: [28280503](https://pubmed.ncbi.nlm.nih.gov/28280503/)
- Klein MO,** Battagello DS, Cardoso AR, Hauser DN, Bittencourt JC, Correa RG. 2019. Dopamine: Functions, Signaling, and Association with Neurological Diseases. *Cellular and Molecular Neurobiology* **39**:31–59. DOI: <https://doi.org/10.1007/s10571-018-0632-3>, PMID: [30446950](https://pubmed.ncbi.nlm.nih.gov/30446950/)
- Koepsell H.** 2019. Multiple binding sites in organic cation transporters require sophisticated procedures to identify interactions of novel drugs. *Biological Chemistry* **400**:195–207. DOI: <https://doi.org/10.1515/hsz-2018-0191>, PMID: [30138103](https://pubmed.ncbi.nlm.nih.gov/30138103/)
- Kotowski SJ,** Hopf FW, Seif T, Bonci A, von Zastrow M. 2011. Endocytosis promotes rapid dopaminergic signaling. *Neuron* **71**:278–290. DOI: <https://doi.org/10.1016/j.neuron.2011.05.036>, PMID: [21791287](https://pubmed.ncbi.nlm.nih.gov/21791287/)
- Kuroiwa M,** Bateup HS, Shuto T, Higashi H, Tanaka M, Nishi A. 2008. Regulation of DARPP-32 phosphorylation by three distinct dopamine D1-like receptor signaling pathways in the neostriatum. *Journal of Neurochemistry* **107**:1014–1026. DOI: <https://doi.org/10.1111/j.1471-4159.2008.05702.x>, PMID: [18823371](https://pubmed.ncbi.nlm.nih.gov/18823371/)
- Le Moine C,** Bloch B. 1995. D1 and D2 dopamine receptor gene expression in the rat striatum: sensitive cRNA probes demonstrate prominent segregation of D1 and D2 mRNAs in distinct neuronal populations of the dorsal and ventral striatum. *The Journal of Comparative Neurology* **355**:418–426. DOI: <https://doi.org/10.1002/cne.903550308>, PMID: [7636023](https://pubmed.ncbi.nlm.nih.gov/7636023/)

- Lin Z, Canales JJ, Björngvinsson T, Thomsen M, Qu H, Liu Q-R, Torres GE, Caine SB. 2011. Monoamine transporters: vulnerable and vital doorkeepers. *Progress in Molecular Biology and Translational Science* **98**:1–46. DOI: <https://doi.org/10.1016/B978-0-12-385506-0.00001-6>, PMID: 21199769
- Lobert VH, Stenmark H. 2012. The ESCRT machinery mediates polarization of fibroblasts through regulation of myosin light chain. *Journal of Cell Science* **125**:29–36. DOI: <https://doi.org/10.1242/jcs.088310>, PMID: 22266905
- Lobingier BT, von Zastrow M. 2019. When trafficking and signaling mix: How subcellular location shapes G protein-coupled receptor activation of heterotrimeric G proteins. *Traffic (Copenhagen, Denmark)* **20**:130–136. DOI: <https://doi.org/10.1111/tra.12634>, PMID: 30578610
- Lukinavičius G, Umezawa K, Olivier N, Honigsmann A, Yang G, Plass T, Mueller V, Reymond L, Corrêa IR Jr, Luo Z-G, Schultz C, Lemke EA, Heppenstall P, Eggeling C, Manley S, Johnsson K. 2013. A near-infrared fluorophore for live-cell super-resolution microscopy of cellular proteins. *Nature Chemistry* **5**:132–139. DOI: <https://doi.org/10.1038/nchem.1546>, PMID: 23344448
- Lüscher C, Malenka RC. 2011. Drug-evoked synaptic plasticity in addiction: from molecular changes to circuit remodeling. *Neuron* **69**:650–663. DOI: <https://doi.org/10.1016/j.neuron.2011.01.017>, PMID: 21338877
- Matamala E, Castillo C, Vivar JP, Rojas PA, Brauchi SE. 2021. Imaging the electrical activity of organelles in living cells. *Communications Biology* **4**:389. DOI: <https://doi.org/10.1038/s42003-021-01916-6>, PMID: 33758369
- Matsui T, Nakata T, Kobayashi Y. 2016. Localization of organic cation transporter 2 (OCT2) in monoaminergic and cholinergic axon terminals of the mouse brain. *Neuroscience Letters* **633**:118–124. DOI: <https://doi.org/10.1016/j.neulet.2016.09.025>
- Missale C, Nash SR, Robinson SW, Jaber M, Caron MG. 1998. Dopamine receptors: from structure to function. *Physiological Reviews* **78**:189–225. DOI: <https://doi.org/10.1152/physrev.1998.78.1.189>
- Musheshe N, Schmidt M, Zaccolo M. 2018. cAMP: From Long-Range Second Messenger to Nanodomain Signalling. *Trends in Pharmacological Sciences* **39**:209–222. DOI: <https://doi.org/10.1016/j.tips.2017.11.006>
- Nash CA, Wei W, Irannejad R, Smrcka AV. 2019. Golgi localized beta1-adrenergic receptors stimulate Golgi PI4P hydrolysis by PLCepsilon to regulate cardiac hypertrophy. *eLife* **8**:e48167. DOI: <https://doi.org/10.7554/eLife.48167>
- Nestler EJ, Luscher C. 2019. The Molecular Basis of Drug Addiction: Linking Epigenetic to Synaptic and Circuit Mechanisms. *Neuron* **102**:48–59. DOI: <https://doi.org/10.1016/j.neuron.2019.01.016>
- Nies AT, Koepsell H, Damme K, Schwab M. 2011. Organic cation transporters (OCTs, MATEs), in vitro and in vivo evidence for the importance in drug therapy. Nies AT (Ed). *Handbook of Experimental Pharmacology*. Elsevier. p. 105–167. DOI: https://doi.org/10.1007/978-3-642-14541-4_3
- Nigg EA, Schäfer G, Hilz H, Eppenberger HM. 1985. Cyclic-AMP-dependent protein kinase type II is associated with the Golgi complex and with centrosomes. *Cell* **41**:1039–1051. DOI: [https://doi.org/10.1016/s0092-8674\(85\)80084-2](https://doi.org/10.1016/s0092-8674(85)80084-2), PMID: 2988780
- Olefirowicz TM, Ewing AG. 1990. Dopamine concentration in the cytoplasmic compartment of single neurons determined by capillary electrophoresis. *Journal of Neuroscience Methods* **34**:11–15. DOI: [https://doi.org/10.1016/0165-0270\(90\)90036-f](https://doi.org/10.1016/0165-0270(90)90036-f)
- Omiatek DM, Bressler AJ, Cans AS, Andrews AM, Heien ML, Ewing AG. 2013. The real catecholamine content of secretory vesicles in the CNS revealed by electrochemical cytometry. *Scientific Reports* **3**:1447. DOI: <https://doi.org/10.1038/srep01447>, PMID: 23486177
- Panchalingam S, Undie AS. 2001. SKF83959 exhibits biochemical agonism by stimulating [(35S)]GTP gamma S binding and phosphoinositide hydrolysis in rat and monkey brain. *Neuropharmacology* **40**:826–837. DOI: [https://doi.org/10.1016/s0028-3908\(01\)00011-9](https://doi.org/10.1016/s0028-3908(01)00011-9), PMID: 11369036
- Peng GE, Pessino V, Huang B, von Zastrow M. 2021. Spatial decoding of endosomal cAMP signals by a metastable cytoplasmic PKA network. *Nature Chemical Biology* **17**:558–566. DOI: <https://doi.org/10.1038/s41589-021-00747-0>, PMID: 33649598
- Post MR, Sulzer D. 2021. The chemical tools for imaging dopamine release. *Cell Chemical Biology* **28**:748–764. DOI: <https://doi.org/10.1016/j.chembiol.2021.04.005>, PMID: 33894160
- Rasmussen SGF, Choi H-J, Fung JJ, Pardon E, Casarosa P, Chae PS, Devree BT, Rosenbaum DM, Thian FS, Kobilka TS, Schnapp A, Konetzki I, Sunahara RK, Gellman SH, Pautsch A, Steyaert J, Weis WI, Kobilka BK. 2011. Structure of a nanobody-stabilized active state of the beta(2) adrenoceptor. *Nature* **469**:175–180. DOI: <https://doi.org/10.1038/nature09648>, PMID: 21228869
- Reith MEA, Zhen J, Chen N. 2006. The importance of company: Na⁺ and Cl⁻ influence substrate interaction with SLC6 transporters and other proteins. Reith M (Ed). *Handbook of Experimental Pharmacology*. Springer. p. 75–93. DOI: https://doi.org/10.1007/3-540-29784-7_4, PMID: 16722231
- Richards M, Lomas O, Jalink K, Ford KL, Vaughan-Jones RD, Lefkimmatis K, Swietach P. 2016. Intracellular tortuosity underlies slow cAMP diffusion in adult ventricular myocytes. *Cardiovascular Research* **110**:395–407. DOI: <https://doi.org/10.1093/cvr/cvw080>
- Ring AM, Manglik A, Kruse AC, Enos MD, Weis WI, Garcia KC, Kobilka BK. 2013. Adrenaline-activated structure of beta2-adrenoceptor stabilized by an engineered nanobody. *Nature* **502**:575–579. DOI: <https://doi.org/10.1038/nature12572>
- Romach MK, Glue P, Kampman K, Kaplan HL, Somer GR, Poole S, Sellers EM. 1999. Attenuation of the euphoric effects of cocaine by the dopamine D1/D5 antagonist ecopipam (SCH 39166). *Archives of General Psychiatry* **56**:1101–1106. DOI: <https://doi.org/10.1001/archpsyc.56.12.1101>

- Roth M, Obaidat A, Hagenbuch B. 2012. OATPs, OATs and OCTs: the organic anion and cation transporters of the SLCO and SLC22A gene superfamilies. *British Journal of Pharmacology* **165**:1260–1287. DOI: <https://doi.org/10.1111/j.1476-5381.2011.01724.x>
- Salery M, Trifilieff P, Caboche J, Vanhoutte P. 2020. From Signaling Molecules to Circuits and Behaviors: Cell-Type-Specific Adaptations to Psychostimulant Exposure in the Striatum. *Biological Psychiatry* **87**:944–953. DOI: <https://doi.org/10.1016/j.biopsych.2019.11.001>
- Sanchez C, Berthier C, Allard B, Perrot J, Bouvard C, Tsutsui H, Okamura Y, Jacquemond V. 2018. Tracking the sarcoplasmic reticulum membrane voltage in muscle with a FRET biosensor. *The Journal of General Physiology* **150**:1163–1177. DOI: <https://doi.org/10.1085/jgp.201812035>, PMID: 29899059
- Saucerman JJ, Greenwald EC, Polanowska-Grabowska R. 2014. Mechanisms of cyclic AMP compartmentation revealed by computational models. *The Journal of General Physiology* **143**:39–48. DOI: <https://doi.org/10.1085/jgp.201311044>, PMID: 24378906
- Schomig E, Lazar A, Grundemann D. 2006. Extraneuronal monoamine transporter and organic cation transporters 1 and 2: a review of transport efficiency. Schomig E (Ed). *Handbook of Experimental Pharmacology*. Elsevier. p. 151–180. DOI: https://doi.org/10.1007/3-540-29784-7_8
- Soberg K, Skålhegg BS. 2018. The Molecular Basis for Specificity at the Level of the Protein Kinase A Catalytic Subunit. *Frontiers in Endocrinology* **9**:538. DOI: <https://doi.org/10.3389/fendo.2018.00538>, PMID: 30258407
- Spano PF, Govoni S, Trabucchi M. 1978. Studies on the pharmacological properties of dopamine receptors in various areas of the central nervous system. *Advances in Biochemical Psychopharmacology* **19**:155–165 PMID: 358777.
- Steinberg SF, Brunton LL. 2001. Compartmentation of G protein-coupled signaling pathways in cardiac myocytes. *Annual Review of Pharmacology and Toxicology* **41**:751–773. DOI: <https://doi.org/10.1146/annurev.pharmtox.41.1.751>
- Stoeber M, Jullie D, Lobingier BT, Laeremans T, Steyaert J, Schiller PW, von Zastrow M. 2018. A Genetically Encoded Biosensor Reveals Location Bias of Opioid Drug Action. *Neuron* **98**:963–976. DOI: <https://doi.org/10.1016/j.neuron.2018.04.021>
- Sulzer D. 2011. How addictive drugs disrupt presynaptic dopamine neurotransmission. *Neuron* **69**:628–649. DOI: <https://doi.org/10.1016/j.neuron.2011.02.010>
- Tang TS, Bezprozvanny I. 2004. Dopamine receptor-mediated Ca(2+) signaling in striatal medium spiny neurons. *The Journal of Biological Chemistry* **279**:42082–42094. DOI: <https://doi.org/10.1074/jbc.M407389200>
- Taubert D, Grimberg G, Stenzel W, Schomig E. 2007. Identification of the endogenous key substrates of the human organic cation transporter OCT2 and their implication in function of dopaminergic neurons. *PLOS ONE* **2**:e385. DOI: <https://doi.org/10.1371/journal.pone.0000385>
- Thomsen ARB, Jensen DD, Hicks GA, Bunnnett NW. 2018. Therapeutic Targeting of Endosomal G-Protein-Coupled Receptors. *Trends in Pharmacological Sciences* **39**:879–891. DOI: <https://doi.org/10.1016/j.tips.2018.08.003>, PMID: 30180973
- Tillo SE, Xiong W-H, Takahashi M, Miao S, Andrade AL, Fortin DA, Yang G, Qin M, Smoody BF, Stork PJS, Zhong H. 2017. Liberated PKA Catalytic Subunits Associate with the Membrane via Myristoylation to Preferentially Phosphorylate Membrane Substrates. *Cell Reports* **19**:617–629. DOI: <https://doi.org/10.1016/j.celrep.2017.03.070>, PMID: 28423323
- Torres GE, Gainetdinov RR, Caron MG. 2003. Plasma membrane monoamine transporters: structure, regulation and function. *Nature Reviews. Neuroscience* **4**:13–25. DOI: <https://doi.org/10.1038/nrn1008>, PMID: 12511858
- Tsvetanova NG, von Zastrow M. 2014. Spatial encoding of cyclic AMP signaling specificity by GPCR endocytosis. *Nature Chemical Biology* **10**:1061–1065. DOI: <https://doi.org/10.1038/nchembio.1665>, PMID: 25362359
- Undie AS, Weinstock J, Sarau HM, Friedman E. 1994. Evidence for a distinct D1-like dopamine receptor that couples to activation of phosphoinositide metabolism in brain. *Journal of Neurochemistry* **62**:2045–2048. DOI: <https://doi.org/10.1046/j.1471-4159.1994.62052045.x>, PMID: 7908949
- Urs NM, Nicholls PJ, Caron MG. 2014. Integrated approaches to understanding antipsychotic drug action at GPCRs. *Current Opinion in Cell Biology* **27**:56–62. DOI: <https://doi.org/10.1016/j.ceb.2013.11.002>, PMID: 24680431
- Vickery RG, von Zastrow M. 1999. Distinct dynamin-dependent and -independent mechanisms target structurally homologous dopamine receptors to different endocytic membranes. *The Journal of Cell Biology* **144**:31–43. DOI: <https://doi.org/10.1083/jcb.144.1.31>, PMID: 9885242
- Walker-Gray R, Stengel F, Gold MG. 2017. Mechanisms for restraining cAMP-dependent protein kinase revealed by subunit quantitation and cross-linking approaches. *PNAS* **114**:10414–10419. DOI: <https://doi.org/10.1073/pnas.1701782114>, PMID: 28893983
- Wan Q, Okashah N, Inoue A, Nehmé R, Carpenter B, Tate CG, Lambert NA. 2018. Mini G protein probes for active G protein-coupled receptors (GPCRs) in live cells. *The Journal of Biological Chemistry* **293**:7466–7473. DOI: <https://doi.org/10.1074/jbc.RA118.001975>, PMID: 29523687
- Warrier S, Ramamurthy G, Eckert RL, Nikolaev VO, Lohse MJ, Harvey RD. 2007. cAMP microdomains and L-type Ca2+ channel regulation in guinea-pig ventricular myocytes. *The Journal of Physiology* **580**:765–776. DOI: <https://doi.org/10.1113/jphysiol.2006.124891>, PMID: 17289786
- Wiederkehr MR, Di Sole F, Collazo R, Quinones H, Fan L, Murer H, Moe OW. 2001. Characterization of acute inhibition of Na/H exchanger NHE-3 by dopamine in opossum kidney cells. *Kidney International* **59**:197–209. DOI: <https://doi.org/10.1046/j.1523-1755.2001.00480.x>

- Wiencke K**, Horstmann A, Mathar D, Villringer A, Neumann J. 2020. Dopamine release, diffusion and uptake: A computational model for synaptic and volume transmission. *PLOS Computational Biology* **16**:e1008410. DOI: <https://doi.org/10.1371/journal.pcbi.1008410>
- Yapo C**, Nair AG, Clement L, Castro LR, Hellgren Kotaleski J, Vincent P. 2017. Detection of phasic dopamine by D1 and D2 striatal medium spiny neurons. *J Physiol* **595**:7451–7475. DOI: <https://doi.org/10.1113/JP274475>
- Zaccolo M**, Zerio A, Lobo MJ. 2021. Subcellular Organization of the cAMP Signaling Pathway. *Pharmacological Reviews* **73**:278–309. DOI: <https://doi.org/10.1124/pharmrev.120.000086>
- Zhang J**, Zhang L, Jiao H, Zhang Q, Zhang D, Lou D, Xu M. 2006. c-Fos facilitates the acquisition and extinction of cocaine-induced persistent changes. *The Journal of Neuroscience* **26**:13287–13296. DOI: <https://doi.org/10.1523/JNEUROSCI.3795-06.2006>
- Zhang XW**, Hatamie A, Ewing AG. 2020. Simultaneous Quantification of Vesicle Size and Catecholamine Content by Resistive Pulses in Nanopores and Vesicle Impact Electrochemical Cytometry. *Journal of the American Chemical Society* **142**:4093–4097. DOI: <https://doi.org/10.1021/jacs.9b13221>, PMID: 32069039