

# UCSF

## UC San Francisco Previously Published Works

### Title

Coffee Intake, Recurrence, and Mortality in Stage III Colon Cancer: Results From CALGB 89803 (Alliance)

### Permalink

<https://escholarship.org/uc/item/06p1d0n2>

### Journal

Journal of Clinical Oncology, 33(31)

### ISSN

0732-183X

### Authors

Guercio, Brendan J  
Sato, Kaori  
Niedzwiecki, Donna  
et al.

### Publication Date

2015-11-01

### DOI

10.1200/jco.2015.61.5062

Peer reviewed

## Coffee Intake, Recurrence, and Mortality in Stage III Colon Cancer: Results From CALGB 89803 (Alliance)

Brendan J. Guercio, Kaori Sato, Donna Niedzwiecki, Xing Ye, Leonard B. Saltz, Robert J. Mayer, Rex B. Mowat, Renaud Whittom, Alexander Hantel, Al Benson, Daniel Atienza, Michael Messino, Hedy Kindler, Alan Venook, Frank B. Hu, Shuji Ogino, Kana Wu, Walter C. Willett, Edward L. Giovannucci, Jeffrey A. Meyerhardt, and Charles S. Fuchs

Author affiliations appear at the end of this article.

Published online ahead of print at [www.jco.org](http://www.jco.org) on August 17, 2015.

Supported by the National Cancer Institute of the National Institutes of Health Grants No. U10CA180821 and U10CA180882 to the Alliance for Clinical Trials in Oncology, CA31946 and CA33601 to the legacy Cancer and Leukemia Group B, and CA180820 to the Eastern Cooperative Oncology Group–American College of Radiology Imaging Network. Additional support was provided by Grants No. CA32291, CA77651, CA45808, and CA60138 from National Institutes of Health, by a grant from the Perry S. Levy Fund for Gastrointestinal Cancer Research, and by Pharmacia & Upjohn Company, now Pfizer Oncology. C.S.F. and J.A.M. are supported in part by the National Cancer Institute (Grants No. R01-CA118553, R01-CA149222, R01-CA169141, and P50-CA127003).

Both J.A.M. and C.S.F. contributed equally to this work.

Terms in [blue](#) are defined in the glossary, found at the end of this article and online at [www.jco.org](http://www.jco.org).

The sponsors did not participate in the design or conduct of the study; collection, management, analysis, or interpretation of the data; or preparation, review, or approval of the manuscript.

Authors' disclosures of potential conflicts of interest are found in the article online at [www.jco.org](http://www.jco.org). Author contributions are found at the end of this article.

Corresponding author: Charles S. Fuchs, MD, MPH, Dana-Farber Cancer Institute, 450 Brookline Ave, Room D1220, Boston, MA 02215; e-mail: [charles\\_fuchs@dfci.harvard.edu](mailto:charles_fuchs@dfci.harvard.edu).

© 2015 by American Society of Clinical Oncology

0732-183X/15/3331w-3598w/\$20.00

DOI: 10.1200/JCO.2015.61.5062

### ABSTRACT

#### Purpose

Observational studies have demonstrated increased colon cancer recurrence in states of relative hyperinsulinemia, including sedentary lifestyle, obesity, and increased dietary glycemic load. Greater coffee consumption has been associated with decreased risk of type 2 diabetes and increased insulin sensitivity. The effect of coffee on colon cancer recurrence and survival is unknown.

#### Patients and Methods

During and 6 months after adjuvant chemotherapy, 953 patients with stage III colon cancer prospectively reported dietary intake of caffeinated coffee, decaffeinated coffee, and nonherbal tea, as well as 128 other items. We examined the influence of coffee, nonherbal tea, and caffeine on cancer recurrence and mortality using [Cox proportional hazards](#) regression.

#### Results

Patients consuming 4 cups/d or more of total coffee experienced an adjusted hazard ratio (HR) for colon cancer recurrence or mortality of 0.58 (95% CI, 0.34 to 0.99), compared with never drinkers ( $P_{\text{trend}} = .002$ ). Patients consuming 4 cups/d or more of caffeinated coffee experienced significantly reduced cancer recurrence or mortality risk compared with abstainers (HR, 0.48; 95% CI, 0.25 to 0.91;  $P_{\text{trend}} = .002$ ), and increasing caffeine intake also conferred a significant reduction in cancer recurrence or mortality (HR, 0.66 across extreme quintiles; 95% CI, 0.47 to 0.93;  $P_{\text{trend}} = .006$ ). Nonherbal tea and decaffeinated coffee were not associated with patient outcome. The association of total coffee intake with improved outcomes seemed consistent across other predictors of cancer recurrence and mortality.

#### Conclusion

Higher coffee intake may be associated with significantly reduced cancer recurrence and death in patients with stage III colon cancer.

*J Clin Oncol* 33:3598-3607. © 2015 by American Society of Clinical Oncology

### INTRODUCTION

Mounting evidence supports an association between excess energy balance and increased risk of developing colon cancer.<sup>1-4</sup> Promotion of cancer by hyperinsulinemia has been proposed as the mechanism underlying this relationship,<sup>5,6</sup> and prospective studies find a significant association between a history of type 2 diabetes (T2D), elevated plasma insulin, and [C-peptide](#), and subsequent colorectal cancer risk.<sup>6-11</sup> Beyond cancer risk, observational studies of patients with established colorectal cancer suggest that energy excess, as manifested by T2D, obesity, sedentary lifestyle, [Western pattern diet](#), high dietary glycemic load, and high intake of sugar-sweetened beverages,

confers an increased risk of colon cancer recurrence and mortality.<sup>12-17</sup> Moreover, increased cancer mortality was observed among patients with stage I, II, and III colorectal cancer with elevated plasma C-peptide or low insulin-like growth factor binding protein-1.<sup>15</sup>

Insight into the role of other dietary factors may contribute to strategies to improve outcome in patients with colon cancer. Coffee is commonly consumed worldwide, and coffee consumption has been associated with decreased risk of T2D,<sup>18-22</sup> lower plasma C-peptide,<sup>11,23</sup> and increased plasma adiponectin, an endogenous insulin sensitizer.<sup>24,25</sup> In addition, some, but not all, studies demonstrate an inverse relationship between coffee consumption and risk of colorectal cancer.<sup>26-28</sup>

In light of evidence supporting a link between excess energy balance, hyperinsulinemia, and increased recurrence in patients with colon cancer, we prospectively examined the association of coffee intake with cancer recurrence and mortality in a cohort of patients with stage III colon cancer enrolled onto a National Cancer Institute–sponsored randomized clinical trial of adjuvant chemotherapy. In this trial, comprehensive data on diet and lifestyle were collected before any documentation of cancer recurrence. Moreover, because data on pathologic stage, performance status, post-operative treatment, and follow-up were carefully captured in this trial, the simultaneous effects of disease characteristics and adjuvant therapy use could be assessed.

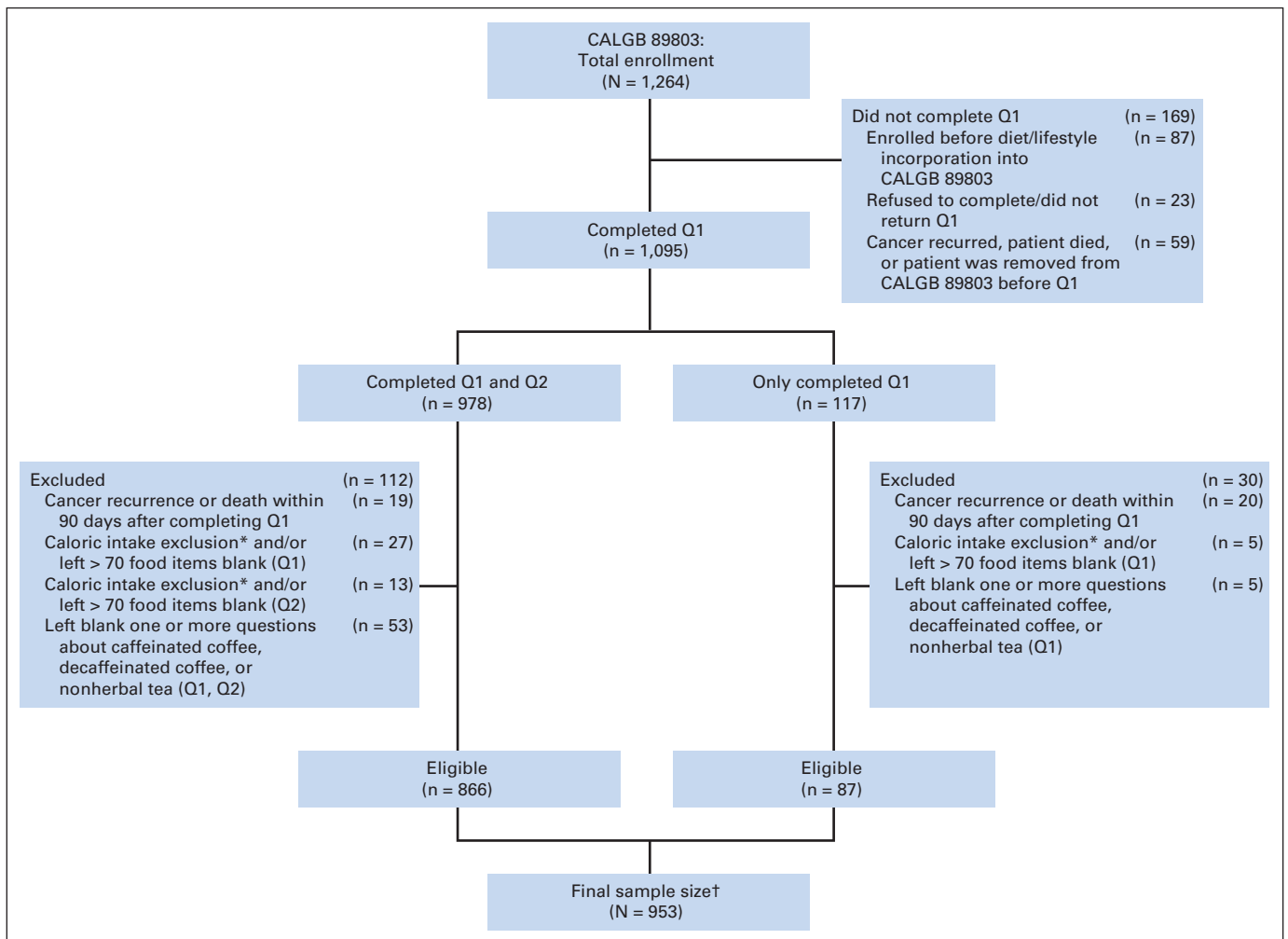
## PATIENTS AND METHODS

### Study Population

Patients in this prospective cohort participated in the National Cancer Institute–sponsored Cancer and Leukemia Group B 89803 (CALGB 89803; now Alliance for Clinical Trials in Oncology) adjuvant therapy trial

for stage III colon cancer, comparing therapy with once per week fluorouracil and leucovorin with therapy with once per week irinotecan, fluorouracil, and leucovorin (ClinicalTrials.gov NCT000038350).<sup>29</sup> Between 1999 and 2001, 1,264 patients were enrolled. After 87 patients were enrolled, an amendment required patients to complete a self-administered semiquantitative food frequency questionnaire (FFQ) that captured diet and lifestyle habits midway through adjuvant therapy (4 months after surgery; questionnaire 1 [Q1]), and again, 6 months after completion of treatment (14 months after surgery; questionnaire 2 [Q2]).

Patients who underwent a complete surgical resection of the primary tumor within 56 days of trial entry, had regional lymph node metastases without evidence of distant metastases, had a baseline Eastern Cooperative Oncology Group performance status of 0 to 2,<sup>30</sup> and had adequate bone marrow, renal, and hepatic function were eligible. Patients were excluded if they reported significantly abnormal caloric intake (< 600 or > 4,200 calories/d for men; < 500 or > 3,500 calories/d for women), left more than 70 food items blank, or left blank one or more questions about caffeinated coffee, decaffeinated coffee, or nonherbal tea on Q1 or Q2. Finally, patients were excluded if they had cancer recurrence or death within 90 days of completing the questionnaire to avoid dietary assessment bias because of declining health, resulting in 953 eligible patients (Fig 1). We previously



**Fig 1.** Derivation of the study cohort. (\*) Caloric intake exclusion indicates fewer than 600 calories/d or more than 4,200 calories/d for men, and fewer than 500 calories/d or more than 3,500 calories/d for women. (†) Six patients in the final sample are missing physical activity in questionnaire 1 (Q1; midway through adjuvant therapy), and three are missing physical activity in questionnaire 2 (Q2; 6 months after completion of adjuvant therapy). One patient is missing body mass index in Q2. CALGB, Cancer and Leukemia Group B.

demonstrated that there were no appreciable differences in baseline characteristics between patients eligible for dietary analysis and the remaining patients enrolled onto CALGB 89803 not included in the dietary studies.<sup>31</sup> All patients provided study-specific informed consent.

### Dietary Assessment

Patients in this analysis completed semiquantitative FFQs that included 131 food items, vitamin and mineral supplements, and open-ended sections for other supplements and foods not specifically listed.<sup>32,33</sup> Participants were asked how often, on average, during the previous 3 months, they consumed a specific food portion size, with up to nine possible responses, which ranged from never to six or more times per day. We computed nutrient intakes by multiplying the frequency of consumption of each food by the nutrient content of the specified portions.<sup>34,35</sup> Nutrient values were energy adjusted using the residuals methods.<sup>36</sup>

On each questionnaire, we assessed intake of caffeinated or decaffeinated coffee, nonherbal tea, herbal tea, and different types of caffeinated soft drinks. We assessed total intake of caffeine by summing the caffeine content for a specific amount of each food during the study period (1 cup for coffee or tea, one 12-ounce bottle or can for carbonated beverages, and 1 ounce for chocolate) multiplied by a weight proportional to the frequency of its use.<sup>22,35</sup> In a separate validity study of our questionnaire, the correlation coefficients between two 1-week diet records and the FFQs for average intake of coffee and tea were 0.78 and 0.93, respectively.<sup>37</sup>

Patients who completed the first FFQ (Q1) without cancer recurrence before FFQ completion were included in these analyses. The median time from study entry to Q1 was 3.5 months (95% range, 2.5 to 5.0 months; full range, 0.2 to 9.9 months). We updated dietary exposures on the basis of results of the second FFQ (Q2) using cumulative averaging, as previously described,<sup>14,31,38-40</sup> but weighted proportional to times between Q1 and Q2, and then between Q2 and disease-free survival (DFS) time. For example, if a patient completed Q1 at 4 months, completed Q2 at 14 months, and had a cancer recurrence at 30 months, the total time between Q1 and cancer recurrence was 26 months, and 38% of that time was between Q1 and Q2 and 62% of that time was between Q2 and the recurrence.

### Study End Points

The primary end point of our study was DFS, defined as time from completion of Q1 to tumor recurrence, occurrence of a new primary colon tumor, or death from any cause. We also assessed recurrence-free survival (RFS), defined as time from completion of Q1 to tumor recurrence or occurrence of a new primary colon tumor. For RFS, patients who died without known tumor recurrence were censored at last documented physician evaluation. Finally, overall survival (OS) was defined as the time from completion of Q1 to death from any cause.

### Statistical Analysis

In the clinical trial, there was no statistical difference in either DFS or OS between treatment arms.<sup>29</sup> Therefore, data for patients in both arms were combined and analyzed according to frequency categories of dietary intake. We assessed nonherbal tea alone because it is biologically distinct from herbal teas.<sup>41</sup> Intake of total coffee, caffeinated coffee, and tea was classified into five frequency categories (0, < 1, 1, 2 to 3, and  $\geq$  4 cups/d), consistent with previous studies.<sup>42-45</sup> Given the few participants reporting decaffeinated coffee intake of more than 2 cups/d, intake of decaffeinated coffee was classified by only four frequency categories to conserve statistical power (0, < 1, 1, and  $\geq$  2 cups/d).

Cox proportional hazards regression was used to determine the simultaneous impact of other variables potentially associated with each outcome.<sup>46</sup> As previously described,<sup>36</sup> we used time-varying covariates to adjust for total calories, physical activity as measured in metabolic equivalent task hours per week,<sup>47</sup> body mass index calculated as weight in kilograms divided by height squared in meters squared, alcohol consumption in grams per day, energy adjusted, and consumption of Western and prudent pattern diets, as defined previously.<sup>14</sup> Other covariates, including sex, age, depth of invasion through bowel wall, number of positive lymph nodes, baseline performance status,

treatment group, smoking history (yes, no, missing), and multivitamin use (consistent user, not consistent user, missing), were entered into the model as fixed covariates. In secondary multivariable analyses, we further adjusted for time-varying sugar-sweetened beverage intake and dietary glycemic load.<sup>13,31</sup> In analyses assessing caffeinated coffee consumption and decaffeinated coffee consumption as independent covariates, we included both caffeinated coffee and decaffeinated coffee intake in the multivariable model simultaneously; similarly, in analyses of tea intake, we included total coffee consumption in the model. Covariates with missing variables were coded with indicator variables.

Although results are displayed for visual effect in discrete categories, each primary statistical analysis was performed using consumption as a continuous measure to minimize bias created by selected categorization. We tested for linear trends across frequency categories of intake by assigning each participant the median value for each frequency category and modeling this value as a continuous variable, consistent with previous studies.<sup>13,14,31</sup> In subgroup exploratory analyses on the effect of total coffee consumption, we collapsed intake into four categories to conserve power, creating the following groupings: 0, less than 1, 1, and 2 or more cups/d. The proportionality of hazards assumption for the effect of each coffee type, caffeine, and tea was satisfied by examining each as a time-dependent covariate in the model. All analyses were performed with SAS version 9.4 (SAS Institute, Cary, NC). A *P* value less than .05 was considered statistically significant. Data collection and statistical analyses were conducted by the Alliance Statistics and Data Center at Duke University Medical Center. Data quality was ensured by review of data by the Alliance Statistics and Data Center and by the study chairperson following Alliance policies. All analyses were based on the study database frozen on November 9, 2009.

## RESULTS

### Baseline Characteristics

Baseline characteristics by frequency of total coffee consumption are displayed in [Table 1](#). Frequent coffee drinkers were more physically active and more likely to be male, white, and current smokers; had higher intake of total energy, caffeine, and Western pattern diet; and had lower dietary glycemic load and lower prudent pattern diet. Baseline characteristics by frequency of caffeinated and decaffeinated coffee consumption are displayed in [Appendix Table A1](#) (online only).

### Impact of Coffee Intake on Cancer Recurrence and Death

The median follow-up time from completion of Q1 is 7.3 years. During follow-up, 329 of the 953 patients in this analysis experienced cancer recurrence or developed new primary tumors; 288 of these patients died. An additional 36 patients died without documented cancer recurrence.

The predefined primary end point in our analysis was DFS. Increasing total coffee intake was associated with a significant reduction in the risk of cancer recurrence or mortality after adjusting for other predictors of cancer recurrence ([Table 2](#)). Compared with abstainers, patients who consumed 4 cups/d or more of coffee experienced an adjusted hazard ratio (HR) for disease recurrence or mortality of 0.59 (95% CI, 0.35 to 1.00;  $P_{\text{trend}} = .003$ ). Increasing total coffee intake was also associated with a significant improvement in OS ( $P_{\text{trend}} = .008$ ) and a trend toward improved RFS that did not reach statistical significance ( $P_{\text{trend}} = .06$ ). These results were largely unchanged when further adjusted for sugar-sweetened beverage intake and glycemic load (DFS,  $P_{\text{trend}} = .002$ ; RFS,  $P_{\text{trend}} = .07$ ; OS,  $P_{\text{trend}} = .01$ ).

Improved outcomes were also associated with caffeinated coffee consumption. Compared with abstainers, patients who consumed 4

Coffee and Stage III Colon Cancer Outcome

Table 1. Baseline Characteristics (total coffee consumption) of 953 Participants

Characteristic	Total Coffee Intake (cups/d)				
	0 (n = 154)	< 1 (n = 186)	1 (n = 238)	2-3 (n = 313)	≥ 4 (n = 62)
Coffee intake, cups/d					
Median	0	0.1	1.0	2.5	4.5
Range	0	0.003-0.498	0.5-1.475	1.502-3.430	3.658-6.559
Male sex, No. (%)	77 (50.0)	87 (46.8)	129 (54.2)	195 (62.3)	46 (74.2)
Age, years, median (range)	55 (34-81)	59 (21-85)	63 (28-83)	62 (26-79)	60 (29-78)
Race, No. (%)					
White	133 (86.4)	156 (83.9)	198 (83.2)	299 (95.5)	61 (98.4)
Black	13 (8.4)	19 (10.2)	25 (10.5)	3 (1.0)	1 (1.6)
Other	8 (5.2)	11 (5.9)	15 (6.3)	11 (3.5)	0 (0)
Baseline performance status, No. (%)*					
0	109 (70.8)	128 (68.8)	179 (75.2)	234 (74.8)	46 (74.2)
1-2	43 (27.9)	53 (28.5)	54 (22.7)	71 (22.7)	15 (24.2)
Status unknown	2 (1.3)	5 (2.7)	5 (2.1)	8 (2.6)	1 (1.6)
Invasion through bowel wall by T stage, No. (%)†					
T1-2	30 (19.5)	18 (9.7)	31 (13.0)	39 (12.5)	12 (19.4)
T3-4	117 (76.0)	152 (81.7)	190 (79.8)	255 (81.5)	43 (69.4)
T stage unknown	7 (4.5)	16 (8.5)	17 (7.1)	19 (6.1)	7 (11.3)
Positive lymph nodes, No. (%)					
1-3	97 (63.0)	122 (65.6)	160 (67.2)	177 (56.5)	42 (67.7)
≥ 4	54 (35.1)	59 (31.7)	73 (30.7)	129 (41.2)	20 (32.3)
Nodes unknown	3 (1.9)	5 (2.7)	5 (2.1)	7 (2.2)	0 (0)
Grade of differentiation, No. (%)					
Well	9 (5.8)	12 (6.5)	15 (6.3)	17 (5.4)	2 (3.2)
Moderate	108 (70.1)	129 (69.4)	178 (74.8)	199 (63.6)	43 (69.4)
Poor/undifferentiated	35 (22.7)	39 (21.0)	40 (16.8)	89 (28.4)	17 (27.4)
Grade unknown	2 (1.3)	6 (3.2)	5 (2.1)	8 (2.6)	0 (0)
Clinical bowel obstruction at presentation, No. (%)	36 (23.4)	46 (24.7)	49 (20.6)	57 (18.2)	18 (29.0)
Bowel perforation at presentation, No. (%)	9 (5.8)	8 (4.3)	10 (4.2)	8 (2.6)	4 (6.5)
Treatment arm, No. (%)					
FU/LV	86 (55.8)	94 (50.5)	128 (53.8)	149 (47.6)	29 (46.8)
IFL	68 (44.2)	92 (49.5)	110 (46.2)	164 (52.4)	33 (53.2)
BMI, kg/m <sup>2</sup> , median (range)‡	27.6 (18-50)	27.4 (16-46)	27.3 (17-49)	27.3 (16-52)	27.5 (19-46)
Physical activity, MET-h/w, median (range)‡	4.7 (0-120)	4.9 (0-147)	3.5 (0-125)	6.0 (0-114)	8.9 (0-115)
Current smoker, No. (%)‡	10 (6.5)	13 (7.0)	18 (7.6)	39 (12.5)	14 (22.6)
Current use of multivitamin, No. (%)‡	78 (50.6)	104 (55.9)	122 (51.3)	136 (43.5)	29 (46.8)
Dietary intake, median (range)‡					
Total energy, kcal/d	1,937 (559-3,974)	1,915 (650-3,902)	1,805 (615-3,891)	2,012 (618-4,100)	2,224 (1,045-3,784)
Alcohol consumption, g/d	0 (0-66.9)	0.4 (0-54.7)	0.4 (0-83.2)	0.7 (0-93.0)	1.0 (0-46.9)
Glycemic load	151.9 (57.5-230.9)	152.1 (88.9-231.1)	148.5 (79.2-246.6)	145.9 (80.1-211.4)	138.2 (90.7-187.3)
Sugar-sweetened beverage, s/d	0.4 (0-4.8)	0.4 (0-5.4)	0.3 (0-5.9)	0.2 (0-5.1)	0.3 (0-3.4)
Total caffeine, mg/d	39 (0-543)	54 (1-441)	131 (2-886)	287 (2-1,376)	459 (0-975)
Western dietary pattern, No. ≥ median (%)‡	68 (44.2)	79 (42.5)	96 (40.3)	186 (59.4)	47 (75.8)
Prudent pattern diet, No. ≥ median (%)‡	70 (45.5)	100 (53.8)	130 (54.6)	154 (49.2)	23 (37.1)

Abbreviations: BMI, body mass index; FU/LV, fluorouracil and leucovorin; IFL, irinotecan, fluorouracil, and leucovorin; MET-h/w, metabolic equivalent task hours per week; s, servings.

\*Baseline performance status (PS): PS 0 indicates fully active; PS 1, restricted in physically strenuous activity but ambulatory and able to perform light work; PS 2, ambulatory and capable of all self-care but unable to perform any work activities, up and approximately more than 50% of waking hours.

†T1-2 indicates level of invasion through the bowel wall not beyond the muscle layer; T3-4, level of invasion through the bowel wall beyond the muscle layer.

‡As reported on questionnaire 1.

cups/d or more of caffeinated coffee experienced a significant reduction in cancer recurrence or mortality (adjusted HR, 0.49; 95% CI, 0.26 to 0.92;  $P_{\text{trend}} = .003$ ; Table 2). Similarly, increasing consumption of caffeinated coffee was associated with a statistically significant improvement in RFS ( $P_{\text{trend}} = .03$ ) and OS ( $P_{\text{trend}} = .006$ ). These results remained largely unchanged when adjusted for sugar-sweetened beverage intake and glycemic load (DFS,  $P_{\text{trend}} = .002$ ; RFS,  $P_{\text{trend}} = .04$ ; OS,  $P_{\text{trend}} = .01$ ). In contrast, neither nonherbal tea nor decaffeinated coffee intake was associated with patient outcome. Secondary

analyses showed no association of outcomes with herbal or total tea (data not shown).

We assessed the influence of total caffeine intake on patient outcome (Table 3). Compared with patients in the lowest quintile of caffeine intake, those in the highest quintile experienced a significant improvement in cancer recurrence or mortality (adjusted HR, 0.65; 95% CI, 0.46 to 0.91;  $P_{\text{trend}} = .005$ ). In addition, increasing caffeine intake was associated with a statistically significant improvement in RFS ( $P_{\text{trend}} = .02$ ) and OS ( $P_{\text{trend}} = .02$ ). These results remained statistically

**Table 2.** Associations Between Colon Cancer Recurrence and Mortality and Total Coffee, Caffeinated Coffee, Decaffeinated Coffee, and Nonherbal Tea

Variable	Categories of Intake (cups/d)					<i>P</i> <sub>trend</sub> *
	0	< 1	1	2-3	≥ 4	
<b>Total coffee</b>						
DFS						
Events and total HR (95% CI)	60 of 154	73 of 186	94 of 238	117 of 313	21 of 62	—
Adjusted 1†	1.0	0.99 (0.70 to 1.40)	0.94 (0.67 to 1.31)	0.71 (0.51 to 0.98)	0.59 (0.35 to 1.00)	.003
Adjusted 2‡	1.0	0.98 (0.69 to 1.39)	0.93 (0.66 to 1.30)	0.69 (0.49 to 0.96)	0.58 (0.34 to 0.99)	.002
RFS						
Events and total HR (95% CI)	52 of 154	65 of 186	81 of 238	111 of 313	20 of 62	—
Adjusted 1†	1.0	0.99 (0.68 to 1.44)	0.93 (0.65 to 1.33)	0.80 (0.56 to 1.13)	0.68 (0.40 to 1.18)	.06
Adjusted 2‡	1.0	0.98 (0.68 to 1.43)	0.97 (0.68 to 1.40)	0.80 (0.56 to 1.14)	0.71 (0.41 to 1.23)	.07
OS						
Events and total HR (95% CI)	48 of 154	59 of 186	74 of 238	89 of 313	18 of 62	—
Adjusted 1†	1.0	1.01 (0.68 to 1.49)	0.96 (0.66 to 1.40)	0.69 (0.47 to 1.01)	0.64 (0.36 to 1.13)	.008
Adjusted 2‡	1.0	0.97 (0.66 to 1.44)	0.97 (0.66 to 1.42)	0.69 (0.47 to 1.01)	0.66 (0.37 to 1.18)	.01
<b>Caffeinated coffee</b>						
DFS						
Events and total HR (95% CI)	94 of 238	101 of 247	67 of 183	91 of 247	12 of 38	—
Adjusted 1†	1.0	0.94 (0.70 to 1.27)	0.84 (0.61 to 1.16)	0.70 (0.51 to 0.94)	0.49 (0.26 to 0.92)	.003
Adjusted 2‡	1.0	0.94 (0.70 to 1.26)	0.84 (0.61 to 1.16)	0.69 (0.51 to 0.93)	0.48 (0.25 to 0.91)	.002
RFS						
Events and total HR (95% CI)	83 of 238	92 of 247	57 of 183	86 of 247	11 of 38	—
Adjusted 1†	1.0	0.93 (0.68 to 1.28)	0.81 (0.57 to 1.14)	0.76 (0.55 to 1.05)	0.53 (0.27 to 1.03)	.03
Adjusted 2‡	1.0	0.93 (0.68 to 1.27)	0.82 (0.58 to 1.16)	0.78 (0.56 to 1.07)	0.55 (0.28 to 1.06)	.04
OS						
Events and total HR (95% CI)	77 of 238	79 of 247	52 of 183	69 of 247	11 of 38	—
Adjusted 1†	1.0	0.88 (0.63 to 1.22)	0.83 (0.57 to 1.19)	0.64 (0.45 to 0.91)	0.52 (0.27 to 1.02)	.006
Adjusted 2‡	1.0	0.85 (0.61 to 1.19)	0.83 (0.58 to 1.20)	0.65 (0.45 to 0.92)	0.54 (0.28 to 1.06)	.01
<b>Decaffeinated coffee</b>						
DFS						
Events and total HR (95% CI)	190 of 477	107 of 301	31 of 94	37 of 81	—	—
Adjusted 1†	1.0	0.87 (0.69 to 1.11)	0.68 (0.46 to 1.01)	0.89 (0.62 to 1.29)		.46
Adjusted 2‡	1.0	0.87 (0.69 to 1.11)	0.68 (0.46 to 1.01)	0.86 (0.59 to 1.25)		.36
RFS						
Events and total HR (95% CI)	166 of 477	99 of 301	28 of 94	36 of 81	—	—
Adjusted 1†	1.0	0.91 (0.71 to 1.17)	0.73 (0.48 to 1.10)	1.09 (0.75 to 1.60)		.78
Adjusted 2‡	1.0	0.94 (0.73 to 1.21)	0.77 (0.51 to 1.16)	1.06 (0.72 to 1.55)		.90
OS						
Events and total HR (95% CI)	155 of 477	80 of 301	24 of 94	29 of 81	—	—
Adjusted 1†	1.0	0.84 (0.63 to 1.10)	0.64 (0.41 to 1.00)	0.91 (0.60 to 1.38)		.55
Adjusted 2‡	1.0	0.85 (0.64 to 1.12)	0.67 (0.43 to 1.05)	0.89 (0.59 to 1.36)		.53
<b>Nonherbal tea</b>						
DFS						
Events and total HR (95% CI)	88 of 226	179 of 474	52 of 140	35 of 85	11 of 28	—
Adjusted 1†	1.0	1.06 (0.81 to 1.37)	0.94 (0.66 to 1.34)	1.02 (0.68 to 1.53)	0.90 (0.48 to 1.71)	.66
Adjusted 2‡	1.0	1.07 (0.82 to 1.38)	0.94 (0.67 to 1.34)	1.01 (0.67 to 1.52)	0.87 (0.46 to 1.65)	.55
RFS						
Events and total HR (95% CI)	80 of 226	161 of 474	44 of 140	34 of 85	10 of 28	—
Adjusted 1†	1.0	1.04 (0.79 to 1.36)	0.87 (0.59 to 1.26)	1.08 (0.71 to 1.63)	0.93 (0.48 to 1.82)	.86
Adjusted 2‡	1.0	1.09 (0.83 to 1.43)	0.89 (0.61 to 1.30)	1.03 (0.67 to 1.57)	0.86 (0.44 to 1.68)	.51

(continued on following page)

**Table 2.** Associations Between Colon Cancer Recurrence and Mortality and Total Coffee, Caffeinated Coffee, Decaffeinated Coffee, and Nonherbal Tea (continued)

Variable	Categories of Intake (cups/d)					<i>P</i> <sub>trend</sub> *
	0	< 1	1	2-3	≥ 4	
OS						
Events and total	74 of 226	139 of 474	38 of 140	28 of 85	9 of 28	—
HR (95% CI)						
Adjusted 1†	1.0	1.03 (0.77 to 1.38)	0.86 (0.58 to 1.28)	1.00 (0.64 to 1.56)	0.87 (0.43 to 1.77)	.6
Adjusted 2‡	1.0	1.08 (0.81 to 1.44)	0.87 (0.58 to 1.30)	0.95 (0.60 to 1.50)	0.82 (0.40 to 1.67)	.36

Abbreviations: DFS, disease-free survival; HR, hazard ratio; OS, overall survival; Q1, questionnaire 1 (midway through adjuvant therapy); Q2, questionnaire 2 (6 months after completion of adjuvant therapy); RFS, recurrence-free survival.

\*Two-sided *P* value. Trend across consumption levels.

†Adjusting for sex, age, depth of invasion through bowel wall, number of positive lymph nodes, baseline performance status, chemotherapy treatment group, smoking history (Q1, Q2: yes, no, missing), multivitamin (Q1, Q2: consistent user, no, missing), and the following time-varying covariates: total energy intake, alcohol consumption, body mass index, physical activity level, Western dietary pattern, and prudent dietary pattern. Caffeinated coffee consumption and decaffeinated coffee consumption were simultaneously included in the model. The model for tea is adjusted for total coffee consumption.

‡Adjusting for all above covariates plus time-varying sugar-sweetened beverage intake and dietary glycemic load.

significant after adjusting for sugar-sweetened beverage intake and glyce-mic load (DFS, *P*<sub>trend</sub> = .006; RFS, *P*<sub>trend</sub> = .04; OS, *P*<sub>trend</sub> = .04).

### Stratified Analyses

We examined the influence of total coffee intake on DFS across strata of other potential predictors of patient outcome, comparing 2 cups/d or more with 0 to conserve statistical power (Fig 2). The association between total coffee intake and patient outcome seemed consistent across most strata of patient, disease, and treatment characteristics. The association of total coffee intake with improved DFS seemed slightly stronger among patients with Eastern Cooperative Oncology Group performance status of 1 to 2, and a test for interaction between total coffee intake and baseline performance status was statistically significant (*P*<sub>interaction</sub> = .04).

## DISCUSSION

In this prospective study of patients with stage III colon cancer, increasing coffee intake was associated with a significant improvement

in cancer recurrence or mortality (DFS) and all-cause mortality (OS). The significant association seemed confined to caffeinated coffee intake. Consistent with this finding, we observed a significant association between higher caffeine intake and improved DFS, RFS, and OS. These associations were independent of other predictors of patient outcome, diet, and lifestyle factors. Moreover, the effect of total coffee intake was largely maintained across other known or suspected predictors of cancer recurrence.

To our knowledge, this is the first study to examine the association between coffee intake and colon cancer recurrence and survival. We hypothesized that coffee might reduce colon cancer recurrence through improved insulin sensitization and decreased hyperinsulinemia, on the basis of previous studies supporting the role of high-energy balance states in promoting colon cancer recurrence and mortality<sup>13,14,16,31</sup> and studies demonstrating an inverse relationship between coffee consumption and risk of T2D.<sup>19,20</sup> The precise effect of caffeine on insulin sensitivity is controversial: Although one trial showed caffeine to cause an

**Table 3.** Associations Between Colon Cancer Recurrence and Mortality and Caffeine Consumption

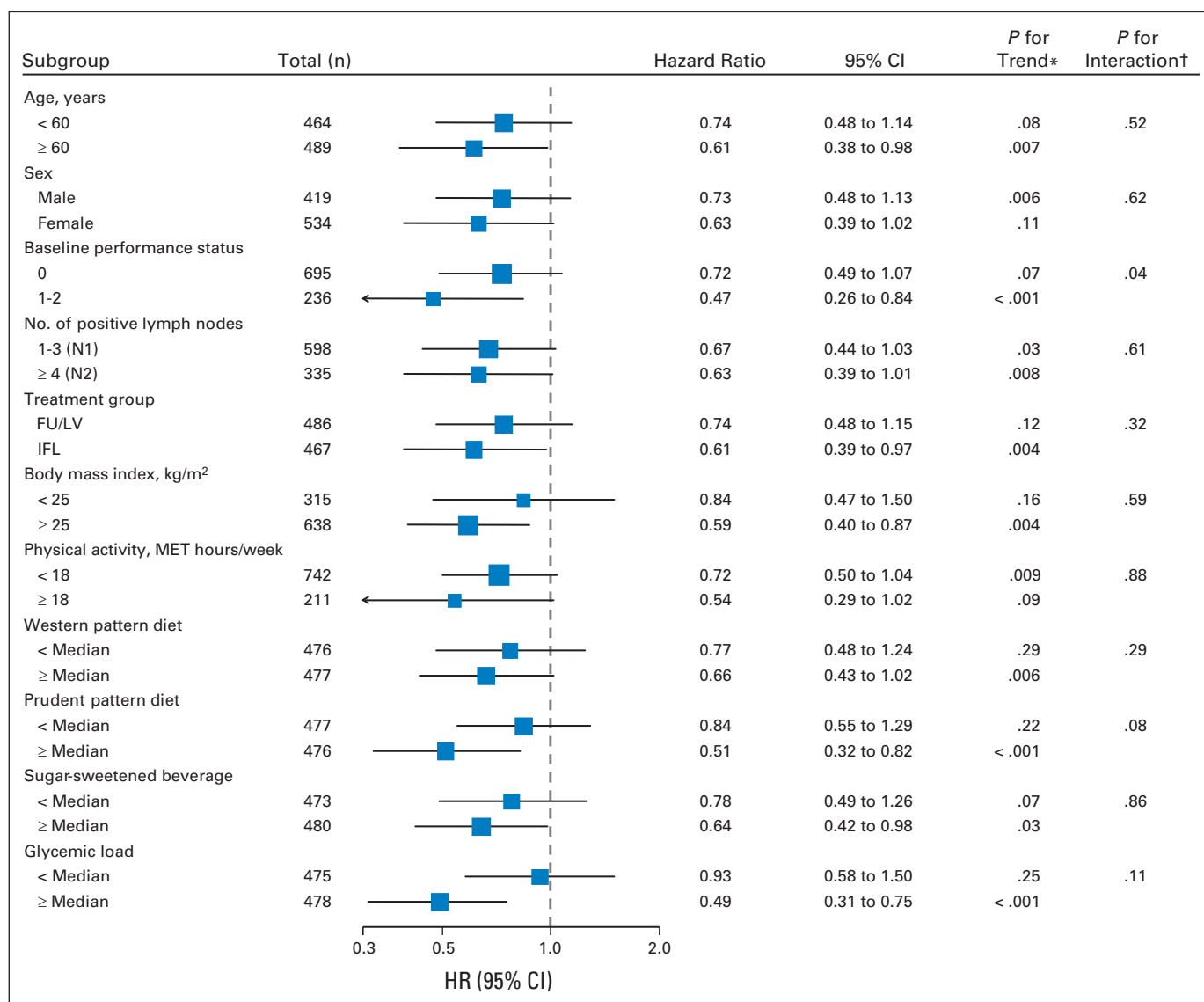
Survival Outcome	Caffeine Intake by Quintiles					<i>P</i> <sub>trend</sub> *
	1	2	3	4	5	
DFS						
Events and total	78 of 190	84 of 191	62 of 191	73 of 191	68 of 190	—
HR (95% CI), adjusted 1†	1.0	1.02 (0.75 to 1.40)	0.72 (0.51 to 1.00)	0.80 (0.57 to 1.11)	0.65 (0.46-0.91)	.005
HR (95% CI), adjusted 2‡	1.0	1.05 (0.77 to 1.44)	0.74 (0.53 to 1.05)	0.82 (0.59 to 1.14)	0.66 (0.47-0.93)	.006
RFS						
Events and total	70 of 190	75 of 191	58 of 191	60 of 191	66 of 190	—
HR (95% CI), adjusted 1†	1.0	0.98 (0.70 to 1.36)	0.73 (0.51 to 1.04)	0.70 (0.50 to 1.00)	0.71 (0.50 to 1.01)	.02
HR (95% CI), adjusted 2‡	1.0	1.05 (0.75 to 1.46)	0.76 (0.54 to 1.09)	0.75 (0.53 to 1.07)	0.76 (0.53 to 1.08)	.04
OS						
Events and total	60 of 190	69 of 191	45 of 191	58 of 191	56 of 190	—
HR (95% CI), adjusted 1†	1.0	1.05 (0.74 to 1.50)	0.67 (0.45 to 0.99)	0.83 (0.57 to 1.21)	0.68 (0.46 to 1.00)	.02
HR (95% CI), adjusted 2‡	1.0	1.11 (0.78 to 1.59)	0.68 (0.46 to 1.01)	0.88 (0.61 to 1.28)	0.72 (0.49 to 1.05)	.04

Abbreviations: DFS, disease-free survival; HR, hazard ratio; OS, overall survival; Q1, questionnaire 1 (midway through adjuvant therapy); Q2, questionnaire 2 (6 months after completion of adjuvant therapy); RFS, recurrence-free survival.

\*Two-sided *P* value. Trend across consumption levels.

†Adjusting for sex, age, depth of invasion through bowel wall, number of positive lymph nodes, baseline performance status, chemotherapy treatment group, smoking history (Q1, Q2: yes, no, missing), multivitamin (Q1, Q2: consistent user, no, missing), and the following time-varying covariates: total energy intake, alcohol consumption, body mass index, physical activity level, Western dietary pattern, and prudent dietary pattern.

‡Adjusting for all above covariates plus time-varying sugar-sweetened beverage intake and dietary glycemic load.



**Fig 2.** Multivariable hazard ratios (HRs) and 95% CIs for cancer recurrence or mortality across strata of various factors. Analyses used four categories (0, < 1, 1, and ≥ 2 cups/d). The forest plot represents the HRs of the comparison of 2 cups/d or more of total coffee intake with 0 cups/wk, adjusting for sex, age, depth of invasion through bowel wall, number of positive lymph nodes, baseline performance status, chemotherapy treatment group, smoking history (questionnaire 1 [Q1; midway through adjuvant therapy], questionnaire 2 [Q2; 6 months after completion of adjuvant therapy]: yes, no, missing), multivitamin (Q1, Q2: consistent user, no, missing), and the following time-varying covariates: total energy intake, alcohol consumption, body mass index, physical activity level, Western dietary pattern, prudent dietary pattern, sugar-sweetened beverage intake, and dietary glycemic load. FU/LV, fluorouracil plus leucovorin; IFL, irinotecan, fluorouracil, and leucovorin; MET, metabolic equivalent task. (\*) Two-sided *P*, trend across consumption levels. (†) Two-sided *P*.

immediate decrease in insulin sensitivity,<sup>48</sup> another trial showed increased adiponectin, an endogenous insulin sensitizer, with caffeinated coffee.<sup>24</sup> Most prospective studies and meta-analyses studying the relationship between coffee consumption and risk of T2D have shown an inverse association for both caffeinated and decaffeinated coffee.<sup>19-21,49</sup> Furthermore, one prospective cohort identified an inverse association between decaffeinated coffee consumption and hemoglobin A1c level.<sup>50</sup>

Although our findings seemed limited to caffeinated coffee, statistical power to adequately examine decaffeinated coffee was limited. Coffee components beyond caffeine may play a role, such as chlorogenic acid, a hypoglycemic coffee phenol.<sup>51,52</sup> Alternatively, coffee and caffeine may affect colon cancer through other mechanisms, such as

anti-inflammatory,<sup>53</sup> antioxidant,<sup>54,55</sup> antiangiogenic, antimetastatic, and proapoptotic effects.<sup>56-58</sup>

We cannot completely exclude the possibility that the associations between total coffee, caffeinated coffee, and caffeine intake and improved DFS result from confounding variables. However, these associations persisted even after controlling for known or suspected predictors of patient outcome, including physical activity, dietary glycemic load, sugar-sweetened beverage intake, and Western and prudent dietary patterns. Furthermore, the association between coffee and improved DFS remained largely consistent across strata of these other predictors of patient outcome. Nonetheless, data on other potential confounders associated with coffee intake, such as poor sleeping habits, work shifts, and anxiety, were not examined in our trial.



Given that patients who consume coffee after cancer diagnosis may have similarly consumed coffee before diagnosis, we cannot exclude the possibility that coffee drinkers develop biologically less aggressive colon cancers. Nonetheless, we did not observe a meaningful association between coffee intake and tumor-related characteristics associated with cancer recurrence.

Testing for relationships between dietary factors and cancer recurrence and mortality in a large random assignment trial offers several advantages. Patient follow-up and treatment were carefully prescribed in the trial, with regular detailed medical examinations to prospectively record the date and nature of cancer recurrences. At study enrollment, all patients had lymph node–positive, nonmetastatic cancer, reducing impact of heterogeneity by disease stage. Prospective collection of detailed information on other potentially prognostic variables at the time of study enrollment reduced likelihood of reporting bias, facilitating more accurate adjustment for potential confounders. Finally, we updated dietary data 6 months after completion of adjuvant chemotherapy to reflect changes in diet that may have occurred after patients recovered from treatment effects and to reduce random error in reporting of dietary practices through repeated measurements. Any residual random error in reporting of dietary practices would likely bias findings toward the null hypothesis.

We considered the possibility that patients with occult cancer recurrences or other poor prognostic characteristics may have decreased their coffee intake. To minimize this bias, we excluded recurrences or deaths within 3 months of FFQ completion. Furthermore, because patients in this trial underwent comprehensive clinical and radiologic assessment before study enrollment, we would expect few patients to have occult cancer recurrences or other poor prognostic characteristics at baseline. To address potential change in dietary habits over time, we conducted a second FFQ 14 months after resection; nonetheless, we cannot exclude that additional dietary habit changes may have occurred after the second FFQ that were not captured in our analysis. However, any misclassification in dietary habits in our analysis would bias our results toward the null hypothesis. Moreover, previous studies have shown dietary patterns in men to be stable during a 1-year interval,<sup>59</sup> and stable in women during 5 years,<sup>60</sup> suggesting that dietary patterns may have remained largely stable beyond 24 months after resection. We further recognize that the caffeine content of coffee available across the United States may vary, potentially contributing to measurement error in our analysis; nonetheless, any misclassification in the measurement of caffeine intake

would bias our results toward the null hypothesis. In addition, we note the number of patients in our study exceeding 3 cups/d of coffee was relatively small ( $n = 62$ ); therefore, additional studies should be performed to replicate our findings.

Finally, patients in randomized trials may differ from the general population. However, the distribution of dietary and lifestyle practices reported by our cohort did not differ significantly from those reported in other US cohorts,<sup>38</sup> and this cohort, drawn from a large clinical trial, included patients from both community and academic centers throughout North America, improving external validity of our results.

In sum, this prospective study of patients with stage III colon cancer, embedded in a randomized clinical trial, demonstrates improved patient outcome with increased consumption of total coffee, caffeinated coffee, and caffeine. Although our observational study does not offer conclusive evidence for causality, our findings potentially inform colon cancer biology and offer further insight into the role of diet and lifestyle in outcome for patients with colon cancer. Further studies are needed to confirm our findings.

#### AUTHORS' DISCLOSURES OF POTENTIAL CONFLICTS OF INTEREST

Disclosures provided by the authors are available with this article at [www.jco.org](http://www.jco.org).

#### AUTHOR CONTRIBUTIONS

**Conception and design:** Kaori Sato, Donna Niedzwiecki, Leonard B. Saltz, Robert J. Mayer, Al Benson, Daniel Atienza, Michael Messino, Frank B. Hu, Shuji Ogino, Kana Wu, Walter C. Willett, Edward L. Giovannucci, Jeffrey A. Meyerhardt, Charles S. Fuchs

**Collection and assembly of data:** Kaori Sato, Donna Niedzwiecki, Leonard B. Saltz, Robert J. Mayer, Rex B. Mowat, Renaud Whittom, Al Benson, Daniel Atienza, Michael Messino, Hedy Kindler, Frank B. Hu, Shuji Ogino, Kana Wu, Walter C. Willett, Edward L. Giovannucci, Jeffrey A. Meyerhardt, Charles S. Fuchs

**Data analysis and interpretation:** Brendan J. Guercio, Kaori Sato, Donna Niedzwiecki, Xing Ye, Leonard B. Saltz, Robert J. Mayer, Alexander Hantel, Al Benson, Daniel Atienza, Michael Messino, Hedy Kindler, Alan Venook, Frank B. Hu, Shuji Ogino, Kana Wu, Walter C. Willett, Edward L. Giovannucci, Jeffrey A. Meyerhardt, Charles S. Fuchs

**Manuscript writing:** All authors

**Final approval of manuscript:** All authors

#### REFERENCES

- Chan AT, Giovannucci EL: Primary prevention of colorectal cancer. *Gastroenterology* 138:2029-2043.e10, 2010
- Giovannucci E: Diet, body weight, and colorectal cancer: A summary of the epidemiologic evidence. *J Womens Health* 12:173-182, 2003
- Moghaddam AA, Woodward M, Huxley R: Obesity and risk of colorectal cancer: A meta-analysis of 31 studies with 70,000 events. *Cancer Epidemiol Biomarkers Prev* 16:2533-2547, 2007
- Samad A, Taylor R, Marshall T, et al: A meta-analysis of the association of physical activity with reduced risk of colorectal cancer. *Colorectal Dis* 7:204-213, 2005
- Giovannucci E: Insulin, insulin-like growth factors and colon cancer: A review of the evidence. *J Nutr* 131:3109S-3120S, 2001
- Kaaks R, Toniolo P, Akhmedkhanov A, et al: Serum C-peptide, insulin-like growth factor (IGF)-I, IGF-binding proteins, and colorectal cancer risk in women. *J Natl Cancer Inst* 92:1592-1600, 2000
- Jenab M, Riboli E, Cleveland RJ, et al: Serum C-peptide, IGFBP-1 and IGFBP-2 and risk of colon and rectal cancers in the European Prospective Investigation into Cancer and Nutrition. *Int J Cancer* 121:368-376, 2007
- Otani T, Iwasaki M, Sasazuki S, et al: Plasma C-peptide, insulin-like growth factor-I, insulin-like growth factor binding proteins and risk of colorectal cancer in a nested case-control study: The Japan public health center-based prospective study. *Int J Cancer* 120:2007-2012, 2007
- Wei EK, Ma J, Pollak MN, et al: A prospective study of C-peptide, insulin-like growth factor-I, insulin-like growth factor binding protein-1, and the risk of colorectal cancer in women. *Cancer Epidemiol Biomarkers Prev* 14:850-855, 2005
- Le Marchand L, Wang H, Rinaldi S, et al: Associations of plasma C-peptide and IGFBP-1 levels with risk of colorectal adenoma in a multiethnic population. *Cancer Epidemiol Biomarkers Prev* 19:1471-1477, 2010
- Fung TT, Hu FB, Schulze M, et al: A dietary pattern that is associated with C-peptide and risk of colorectal cancer in women. *Cancer Causes Control* 23:959-965, 2012
- Demark-Wahnefried W, Platz EA, Ligibel JA, et al: The role of obesity in cancer survival and recurrence. *Cancer Epidemiol Biomarkers Prev* 21:1244-1259, 2012

13. Fuchs MA, Sato K, Niedzwiecki D, et al: Sugar-sweetened beverage intake and cancer recurrence and survival in CALGB 89803 (Alliance). *PLoS One* 9:e99816, 2014
14. Meyerhardt JA, Niedzwiecki D, Hollis D, et al: Association of dietary patterns with cancer recurrence and survival in patients with stage III colon cancer. *JAMA* 298:754-764, 2007
15. Wolpin BM, Meyerhardt JA, Chan AT, et al: Insulin, the insulin-like growth factor axis, and mortality in patients with nonmetastatic colorectal cancer. *J Clin Oncol* 27:176-185, 2009
16. Meyerhardt JA, Heseltine D, Niedzwiecki D, et al: Impact of physical activity on cancer recurrence and survival in patients with stage III colon cancer: Findings from CALGB 89803. *J Clin Oncol* 24:3535-3541, 2006
17. Mills KT, Bellows CF, Hoffman AE, et al: Diabetes mellitus and colorectal cancer prognosis: A meta-analysis. *Dis Colon Rectum* 56:1304-1319, 2013
18. Bhupathiraju SN, Pan A, Manson JE, et al: Changes in coffee intake and subsequent risk of type 2 diabetes: Three large cohorts of US men and women. *Diabetologia* 57:1346-1354, 2014
19. Ding M, Bhupathiraju SN, Chen M, et al: Caffeinated and decaffeinated coffee consumption and risk of type 2 diabetes: A systematic review and a dose-response meta-analysis. *Diabetes Care* 37:569-586, 2014
20. Bhupathiraju SN, Pan A, Malik VS, et al: Caffeinated and caffeine-free beverages and risk of type 2 diabetes. *Am J Clin Nutr* 97:155-166, 2012
21. van Dam RM, Hu FB: Coffee consumption and risk of type 2 diabetes: A systematic review. *JAMA* 294:97-104, 2005
22. Salazar-Martinez E, Willett WC, Ascherio A, et al: Coffee consumption and risk for type 2 diabetes mellitus. *Ann Intern Med* 140:1-8, 2004
23. Wu T, Willett WC, Hankinson SE, et al: Caffeinated coffee, decaffeinated coffee, and caffeine in relation to plasma C-peptide levels, a marker of insulin secretion, in US women. *Diabetes Care* 28:1390-1396, 2005
24. Wedick NM, Brennan AM, Sun Q, et al: Effects of caffeinated and decaffeinated coffee on biological risk factors for type 2 diabetes: A randomized controlled trial. *Nutr J* 10:93, 2011
25. Williams CJ, Fargnoli JL, Hwang JJ, et al: Coffee consumption is associated with higher plasma adiponectin concentrations in women with or without type 2 diabetes: A prospective cohort study. *Diabetes Care* 31:504-507, 2008
26. Yu X, Bao Z, Zou J, et al: Coffee consumption and risk of cancers: A meta-analysis of cohort studies. *BMC Cancer* 11:96, 2011
27. Li G, Ma D, Zhang Y, et al: Coffee consumption and risk of colorectal cancer: A meta-analysis of observational studies. *Public Health Nutr* 16:346-357, 2013
28. Je Y, Liu W, Giovannucci E: Coffee consumption and risk of colorectal cancer: A systematic review and meta-analysis of prospective cohort studies. *Int J Cancer* 124:1662-1668, 2009
29. Saltz LB, Niedzwiecki D, Hollis D, et al: Irinotecan fluorouracil plus leucovorin is not superior to fluorouracil plus leucovorin alone as adjuvant treatment for stage III colon cancer: Results of CALGB 89803. *J Clin Oncol* 25:3456-3461, 2007
30. Zubrod CG, Schneiderman M, Frei E III, et al: Appraisal of methods for the study of chemotherapy of cancer in man: Comparative therapeutic trial of nitrogen mustard and triethylene thiophosphoramide. *J Chronic Dis* 11:7-33, 1960
31. Meyerhardt JA, Sato K, Niedzwiecki D, et al: Dietary glycemic load and cancer recurrence and survival in patients with stage III colon cancer: Findings from CALGB 89803. *J Natl Cancer Inst* 104:1702-1711, 2012
32. Willett WC, Sampson L, Stampfer MJ, et al: Reproducibility and validity of a semiquantitative food frequency questionnaire. *Am J Epidemiol* 122:51-65, 1985
33. Willett WC, Reynolds RD, Cottrell-Hoehner S, et al: Validation of a semi-quantitative food frequency questionnaire: Comparison with a 1-year diet record. *J Am Diet Assoc* 87:43-47, 1987
34. US Department of Agriculture ARS: USDA nutrient database for standard reference, release 10. <http://www.nal.usda.gov/fnic/foodcomp>
35. US Department of Agriculture. Composition of foods: raw, processed, and prepared, 1963-1988. Agriculture Handbook No. 8 Series. Washington, DC, Department of Agriculture, US Government Printing Office, 1989
36. Willett W, Stampfer MJ: Total energy intake: Implications for epidemiologic analyses. *Am J Epidemiol* 124:17-27, 1986
37. Salvini S, Hunter DJ, Sampson L, et al: Food-based validation of a dietary questionnaire: The effects of week-to-week variation in food consumption. *Int J Epidemiol* 18:858-867, 1989
38. Michaud DS, Fuchs CS, Liu S, et al: Dietary glycemic load, carbohydrate, sugar, and colorectal cancer risk in men and women. *Cancer Epidemiol Biomarkers Prev* 14:138-147, 2005
39. Oh K, Willett WC, Fuchs CS, et al: Glycemic index, glycemic load, and carbohydrate intake in relation to risk of distal colorectal adenoma in women. *Cancer Epidemiol Biomarkers Prev* 13:1192-1198, 2004
40. Hu FB, Stampfer MJ, Rimm E, et al: Dietary fat and coronary heart disease: A comparison of approaches for adjusting for total energy intake and modeling repeated dietary measurements. *Am J Epidemiol* 149:531-540, 1999
41. National Cancer Institute: Tea and cancer prevention: Strengths and limits of the evidence. <http://www.cancer.gov/cancertopics/factsheet/prevention/tea>
42. van Dam RM, Willett WC, Manson JE, et al: Coffee, caffeine, and risk of type 2 diabetes: A prospective cohort study in younger and middle-aged US women. *Diabetes Care* 29:398-403, 2006
43. Kontou N, Psaltopoulou T, Soupos N, et al: The role of number of meals, coffee intake, salt and type of cookware on colorectal cancer development in the context of the Mediterranean diet. *Public Health Nutr* 16:928-935, 2013
44. Sugiyama K, Kuriyama S, Akhter M, et al: Coffee consumption and mortality due to all causes, cardiovascular disease, and cancer in Japanese women. *J Nutr* 140:1007-1013, 2010
45. Michels KB, Willett WC, Fuchs CS, et al: Coffee, tea, and caffeine consumption and incidence of colon and rectal cancer. *J Natl Cancer Inst* 97:282-292, 2005
46. Cox DR: Regression models and life tables. *J R Stat Soc* 34:187-220, 1972
47. Ainsworth BE, Haskell WL, Leon AS, et al: Compendium of physical activities: Classification of energy costs of human physical activities. *Med Sci Sports Exerc* 25:71-80, 1993
48. Keijzers GB, De Galan BE, Tack CJ, et al: Caffeine can decrease insulin sensitivity in humans. *Diabetes Care* 25:364-369, 2002
49. Huxley R, Lee CMY, Barzi F, et al: Coffee, decaffeinated coffee, and tea consumption in relation to incident type 2 diabetes mellitus: A systematic review with meta-analysis. *Arch Intern Med* 169:2053-2063, 2009
50. Zhang WL, Lopez-Garcia E, Li TY, et al: Coffee consumption and risk of cardiovascular events and all-cause mortality among women with type 2 diabetes. *Diabetologia* 52:810-817, 2009
51. Tunnicliffe JM, Eller LK, Reimer RA, et al: Chlorogenic acid differentially affects postprandial glucose and glucose-dependent insulinotropic polypeptide response in rats. *Appl Physiol Nutr Metab* 36:650-659, 2011
52. Johnston KL, Clifford MN, Morgan LM: Coffee acutely modifies gastrointestinal hormone secretion and glucose tolerance in humans: Glycemic effects of chlorogenic acid and caffeine. *Am J Clin Nutr* 78:728-733, 2003
53. Lopez-Garcia E, van Dam RM, Qi L, et al: Coffee consumption and markers of inflammation and endothelial dysfunction in healthy and diabetic women. *Am J Clin Nutr* 84:888-893, 2006
54. Svilaas A, Sakhi AK, Andersen LF, et al: Intakes of antioxidants in coffee, wine, and vegetables are correlated with plasma carotenoids in humans. *J Nutr* 134:562-567, 2004
55. Olthof MR, Hollman PC, Katan MB: Chlorogenic acid and caffeic acid are absorbed in humans. *J Nutr* 131:66-71, 2001
56. Bøhn SK, Blomhoff R, Paur I: Coffee and cancer risk, epidemiological evidence, and molecular mechanisms. *Mol Nutr Food Res* 58:915-930, 2014
57. La Vecchia C, Tavani A: Coffee and cancer risk: An update. *Eur J Cancer Prev* 16:385-389, 2007
58. Nkondjock A: Coffee consumption and the risk of cancer: An overview. *Cancer Lett* 277:121-125, 2009
59. Hu FB, Rimm E, Smith-Warner SA, et al: Reproducibility and validity of dietary patterns assessed with a food-frequency questionnaire. *Am J Clin Nutr* 69:243-249, 1999
60. Weismayer C, Anderson JG, Wolk A: Changes in the stability of dietary patterns in a study of middle-aged Swedish women. *J Nutr* 136:1582-1587, 2006

### Affiliations

Brendan J. Guercio, Shuji Ogino, and Edward L. Giovannucci, Harvard Medical School; Kaori Sato, Robert J. Mayer, Shuji Ogino, Jeffrey A. Meyerhardt, and Charles S. Fuchs, Dana-Farber Cancer Institute; Frank B. Hu, Shuji Ogino, Kana Wu, Walter C. Willett, and Edward L. Giovannucci, Harvard T.H. Chan School of Public Health; Shuji Ogino and Edward L. Giovannucci, Brigham and Women's Hospital, Boston, MA; Leonard B. Saltz, Memorial Sloan Kettering Cancer Center, New York, NY; Rex B. Mowat, Toledo Community Hospital Oncology Program, Toledo, OH; Renaud Whittom, Hôpital du Sacré-Coeur de Montréal, Montreal, Quebec, Canada; Alexander Hantel,

Loyola University Stritch School of Medicine, Naperville; Al Benson, Northwestern University; Hedy Kindler, University of Chicago, Chicago, IL; Daniel Atienza, Virginia Oncology Associates, Norfolk, VA; Donna Niedzwiecki and Xing Ye, Duke University Medical Center, Durham; Michael Messino, Southeast Cancer Control Consortium, Mission Hospitals, Asheville, NC; and Alan Venook, University of California at San Francisco Comprehensive Cancer Center, San Francisco, CA.

#### GLOSSARY TERMS

**Cox proportional hazards:** See *Cox proportional hazards regression model*.

**C-peptide:** A protein fragment produced during the enzymatic cleavage of proinsulin to create insulin. It is secreted by pancreatic  $\beta$ -cells at equimolar concentrations to insulin but has a

half-life in the circulation of two to five times longer. Because its greater stability in the peripheral circulation, C-peptide has been measured in research studies as a marker of pancreatic  $\beta$ -cell secretory activity.

**Western pattern diet:** Western pattern diet is characterized by high intakes of red and processed meats, fat, refined grains, and dessert.

### ASCO's Quality Assessment Tool for Community Research Programs

As part of ASCO's mission to ensure the highest quality of cancer care and research, the Community Research Forum has developed the **ASCO Research Program Quality Assessment Tool**. Access the tool today to learn about key components of an internal quality assessment program, conduct a quality assessment of your site, and use the checklist tool, templates, references, and resources.

Visit [asco.org/communityresearchforum](http://asco.org/communityresearchforum) for more information.



## AUTHORS' DISCLOSURES OF POTENTIAL CONFLICTS OF INTEREST

## Coffee Intake, Recurrence, and Mortality in Stage III Colon Cancer: Results From CALGB 89803 (Alliance)

The following represents disclosure information provided by authors of this manuscript. All relationships are considered compensated. Relationships are self-held unless noted. I = Immediate Family Member, Inst = My Institution. Relationships may not relate to the subject matter of this manuscript. For more information about ASCO's conflict of interest policy, please refer to [www.asco.org/rwc](http://www.asco.org/rwc) or [jco.ascopubs.org/site/ifc](http://jco.ascopubs.org/site/ifc).

**Brendan J. Guercio**

No relationship to disclose

**Kaori Sato**

No relationship to disclose

**Donna Niedzwiecki**

No relationship to disclose

**Xing Ye**

No relationship to disclose

**Leonard B. Saltz**

**Consulting or Advisory Role:** Abbott Biotherapeutics, Boehringer Ingelheim, Sun Pharmaceutical Industries, Genentech, Pfizer, Bayer AG, Eli Lilly

**Research Funding:** Taiho Pharmaceutical

**Robert J. Mayer**

**Honoraria:** Amgen, AstraZeneca

**Rex B. Mowat**

No relationship to disclose

**Renaud Whittom**

**Consulting or Advisory Role:** Pfizer, Boehringer Ingelheim, Novartis  
**Speakers' Bureau:** Eli Lilly

**Alexander Hantel**

**Consulting or Advisory Role:** Genentech

**Al Benson**

No relationship to disclose

**Daniel Atienza**

**Employment:** Virginia Oncology Associates

**Michael Messino**

No relationship to disclose

**Hedy Kindler**

No relationship to disclose

**Alan Venook**

**Research Funding:** Bayer AG (Inst), Onyx Pharmaceuticals (Inst), Genentech (Inst), Bristol-Myers Squibb (Inst), GlaxoSmithKline (Inst), Eli Lilly (Inst)

**Patents, Royalties, Other Intellectual Property:** Now-Up-To-Date  
**Travel, Accommodations, Expenses:** Halozyme Therapeutics, Genentech, Roche, Bristol-Myers Squibb, Merck

**Frank B. Hu**

No relationship to disclose

**Shuji Ogino**

No relationship to disclose

**Kana Wu**

No relationship to disclose

**Walter C. Willett**

No relationship to disclose

**Edward L. Giovannucci**

No relationship to disclose

**Jeffrey A. Meyerhardt**

**Research Funding:** Biothera (Inst), Bristol-Myers Squibb (Inst), Gilead Sciences (Inst)

**Charles S. Fuchs**

No relationship to disclose

## Appendix

Table A1. Baseline Characteristics (caffeinated and decaffeinated coffee consumption) for 953 Participants

Characteristic	Caffeinated Coffee Intake (cups/d)					Decaffeinated Coffee Intake (cups/d)			
	0 (n = 238)	< 1 (n = 247)	1 (n = 183)	2-3 (n = 247)	≥ 4 (n = 38)	0 (n = 447)	< 1 (n = 301)	1 (n = 94)	≥ 2 (n = 81)
Intake, cups/d									
Median	0	0.1	1.0	2.5	4.5	0	0.1	1.0	2.5
Range (min)	0	0.0026	0.506	1.502	3.518	0	0.00007	0.513	1.576
Range (max)	0	0.4981	1.475	3.371	6.000	0	0.498	1.490	5.857
Male sex, No. (%)	114 (48)	142 (58)	98 (54)	151 (61)	29 (76)	272 (57)	151 (50)	57 (61)	54 (67)
Age, years, median (range)	57 (34-85)	63 (21-82)	60 (28-83)	60 (26-79)	57 (29-78)	57 (21-82)	60 (24-85)	67 (36-80)	66 (46-78)
Race, No. (%)									
White	201 (84.5)	210 (85.0)	161 (88.0)	237 (96.0)	38 (100)	429 (89.9)	262 (87.0)	80 (85.1)	76 (93.8)
Black	27 (11.3)	22 (8.9)	10 (5.5)	2 (0.8)	0 (0)	25 (5.2)	24 (8.0)	10 (10.6)	2 (2.5)
Other	10 (4.2)	15 (6.1)	12 (6.6)	8 (3.2)	0 (0)	23 (4.8)	15 (5.0)	4 (4.3)	3 (3.7)
Baseline performance status, No. (%)*									
0	170 (71.4)	174 (70.4)	138 (75.4)	187 (75.7)	27 (71.1)	347 (72.7)	220 (73.1)	71 (75.5)	58 (71.6)
1-2	64 (26.9)	69 (27.9)	40 (21.9)	53 (21.5)	10 (26.3)	118 (24.7)	74 (24.6)	22 (23.4)	22 (27.2)
Status unknown	4 (1.7)	4 (1.6)	5 (2.7)	7 (2.8)	1 (2.6)	12 (2.5)	7 (2.3)	1 (1.1)	1 (1.2)
Invasion through bowel wall by T stage, No. (%)†									
T1-2	47 (19.7)	19 (7.7)	25 (13.7)	34 (13.8)	5 (13.2)	68 (14.3)	36 (12.0)	13 (13.8)	13 (16.0)
T3-4	179 (75.2)	212 (85.8)	144 (78.7)	193 (78.1)	29 (76.3)	370 (77.6)	247 (82.1)	77 (81.9)	63 (77.8)
T stage unknown	12 (5.0)	16 (6.5)	14 (7.7)	20 (8.1)	4 (10.5)	39 (8.2)	18 (6.0)	4 (4.3)	5 (6.2)
Positive lymph nodes, No. (%)									
1-3	149 (62.6)	158 (64.0)	122 (66.7)	146 (59.1)	23 (60.5)	302 (63.3)	190 (63.1)	58 (61.7)	48 (59.3)
≥ 4	84 (35.3)	85 (34.4)	56 (30.6)	95 (38.5)	15 (39.5)	163 (34.2)	105 (34.9)	35 (37.2)	32 (39.5)
Nodes unknown	5 (2.1)	4 (1.6)	5 (2.7)	6 (2.4)	0 (0)	12 (2.5)	6 (2.0)	1 (1.1)	1 (1.2)
Grade of differentiation, No. (%)									
Well	13 (5.5)	16 (6.5)	11 (6.0)	14 (5.7)	1 (2.6)	32 (6.7)	14 (4.7)	5 (5.3)	4 (4.9)
Moderate	160 (67.2)	181 (73.3)	136 (74.3)	155 (62.8)	25 (65.8)	321 (67.3)	213 (70.8)	69 (73.4)	54 (66.7)
Poor/undifferentiated	61 (25.6)	45 (18.2)	31 (16.9)	71 (28.7)	12 (31.6)	111 (23.3)	68 (22.6)	19 (20.2)	22 (27.2)
Grade unknown	4 (1.7)	5 (2.0)	5 (2.7)	7 (2.8)	0 (0)	13 (2.7)	6 (2.0)	1 (1.1)	1 (1.2)
Clinical bowel obstruction at presentation, No. (%)	52 (21.8)	57 (23.1)	34 (18.6)	53 (21.5)	10 (26.3)	106 (22.2)	66 (21.9)	23 (24.5)	11 (13.6)
Bowel perforation at presentation, No. (%)	13 (5.5)	10 (4.0)	5 (2.7)	8 (3.2)	3 (7.9)	22 (4.6)	10 (3.3)	6 (6.4)	1 (1.2)
Treatment arm, No. (%)									
FU/LV	120 (50.4)	124 (50.2)	100 (54.6)	122 (49.4)	20 (52.6)	255 (53.5)	156 (51.8)	44 (46.8)	31 (38.3)
IFL	118 (49.6)	123 (49.8)	83 (45.4)	125 (50.6)	18 (47.4)	222 (46.5)	145 (48.2)	50 (53.2)	50 (61.7)
BMI, kg/m <sup>2</sup> , median (range)‡	27.6 (17.2-49.9)	27.2 (16.3-46.2)	27.3 (17.3-46.3)	27.3 (15.7-51.8)	26.5 (19.0-46.2)	27.7 (15.7-49.9)	26.8 (17.2-51.8)	26.6 (17.2-49.4)	27.4 (18.5-40.3)
Physical activity, MET-h/w, median (range)‡	4.0 (0-119.9)	6.0 (0-147.4)	3.9 (0-125.2)	5.2 (0-114.2)	13.2 (0-114.6)	5.4 (0-147.4)	4.5 (0-112.7)	3.2 (0-87.5)	6.9 (0-112.7)
Current smoker, No. (%)‡	17 (7.1)	16 (6.5)	14 (7.7)	35 (14.2)	12 (31.6)	55 (11.5)	23 (7.6)	9 (9.6)	7 (8.6)
Currently uses multivitamin, No. (%)‡	126 (52.9)	131 (53.0)	91 (49.7)	105 (42.5)	16 (42.1)	209 (43.8)	172 (57.1)	50 (53.2)	38 (46.9)
Dietary intake‡									
Total energy, kcal/d	1,761 (559-3,974)	1,973 (650-3,902)	1,938 (615-3,844)	2,027 (618-4,100)	2,329 (1,050-3,784)	1,950 (559-4,100)	1,951 (727-3,902)	1,877 (685-3,891)	1,978 (1,045-3,240)
Alcohol consumption, g/d	0 (0-66.9)	0.4 (0-67.0)	0.6 (0-83.2)	0.8 (0-93.0)	1.2 (0-37.5)	0 (0-93.0)	0.6 (0-61.2)	0.4 (0-35.2)	0.4 (0-67.0)
Glycemic load	151.7 (57.5-247)	151.8 (88.9-231)	144.8 (79.2-232)	142.2 (80.1-204)	137.2 (97.2-187)	146.7 (57.5-231)	147.2 (82.4-232)	151.8 (99.8-247)	147.2 (90.7-208)
Sugar-sweetened beverage, s/d	0.4 (0-4.8)	0.4 (0-5.4)	0.3 (0-5.9)	0.3 (0-5.1)	0.4 (0-3.4)	0.4 (0-5.4)	0.3 (0-5.9)	0.4 (0-3.6)	0.2 (0-3.5)

(continued on following page)

**Table A1.** Baseline Characteristics (caffeinated and decaffeinated coffee consumption) for 953 Participants (continued)

Characteristic	Caffeinated Coffee Intake (cups/d)					Decaffeinated Coffee Intake (cups/d)			
	0 (n = 238)	< 1 (n = 247)	1 (n = 183)	2-3 (n = 247)	≥ 4 (n = 38)	0 (n = 447)	< 1 (n = 301)	1 (n = 94)	≥ 2 (n = 81)
Caffeine, mg/d	36 (0-543)	60 (2-593)	165 (3-886)	331 (2-1,376)	542 (10-975)	154 (0-1,376)	117 (1-1,098)	72 (2-637)	64 (0-793)
Western dietary pattern, No. ≥ median (%)‡	97 (40.8)	119 (48.2)	81 (44.3)	149 (60.3)	30 (78.9)	244 (51.2)	143 (47.5)	41 (43.6)	48 (59.3)
Prudent pattern diet, No. ≥ median (%)‡	111 (46.6)	135 (54.7)	100 (54.6)	120 (48.6)	11 (28.9)	231 (48.4)	160 (53.2)	46 (48.9)	40 (49.4)

Abbreviations: BMI, body mass index; FU/LV, fluorouracil and leucovorin; IFL, irinotecan, fluorouracil, and leucovorin; MET-h/w, metabolic equivalent task hours per week; min, minimum; max, maximum; s, servings.

\*Baseline performance status (PS): PS 0 indicates fully active; PS 1, restricted in physically strenuous activity but ambulatory and able to perform light work; PS 2, ambulatory and capable of all self-care but unable to perform any work activities, up and approximately more than 50% of waking hours.

†T1-2 indicates level of invasion through the bowel wall not beyond the muscle layer; T3-4, level of invasion through the bowel wall beyond the muscle layer.

‡As reported on questionnaire 1.