

UC Davis

UC Davis Previously Published Works

Title

Genetic association analysis identifies variants associated with disease progression in primary sclerosing cholangitis

Permalink

<https://escholarship.org/uc/item/09b649sm>

Journal

Gut, 67(8)

ISSN

0017-5749

Authors

Alberts, Rudi
de Vries, Elisabeth MG
Goode, Elizabeth C
[et al.](#)

Publication Date

2018-08-01

DOI

10.1136/gutjnl-2016-313598

Peer reviewed



Published in final edited form as:

Gut. 2018 August ; 67(8): 1517–1524. doi:10.1136/gutjnl-2016-313598.

Genetic association analysis identifies variants associated with disease progression in primary sclerosing cholangitis

A full list of authors and affiliations appears at the end of the article.

Abstract

Objective—Primary sclerosing cholangitis (PSC) is a genetically complex, inflammatory bile duct disease of largely unknown aetiology often leading to liver transplantation or death. Little is known about the genetic contribution to the severity and progression of PSC. The aim of this study is to identify genetic variants associated with PSC disease progression and development of complications.

Design—We collected standardised PSC subphenotypes in a large cohort of 3402 patients with PSC. After quality control, we combined 130 422 single nucleotide polymorphisms of all patients—obtained using the Illumina immunochip—with their disease subphenotypes. Using logistic regression and Cox proportional hazards models, we identified genetic variants associated with binary and time-to-event PSC subphenotypes.

Results—We identified genetic variant rs853974 to be associated with liver transplant-free survival ($p=6.07\times 10^{-9}$). Kaplan-Meier survival analysis showed a 50.9% (95% CI 41.5% to 59.5%) transplant-free survival for homozygous AA allele carriers of rs853974 compared with 72.8% (95% CI 69.6% to 75.7%) for GG carriers at 10 years after PSC diagnosis. For the candidate gene in the region, *RSPO3*, we demonstrated expression in key liver-resident effector cells, such as human and murine cholangiocytes and human hepatic stellate cells.

Conclusion—We present a large international PSC cohort, and report genetic loci associated with PSC disease progression. For liver transplant-free survival, we identified a genome-wide significant signal and demonstrated expression of the candidate gene *RSPO3* in key liver-resident effector cells. This warrants further assessments of the role of this potential key PSC modifier gene.

Correspondence to, Dr Rinse K Weersma, Department of Gastroenterology and Hepatology, University of Groningen and University Medical Center Groningen, PO Box 30.001, 9700RB, Groningen, the Netherlands; r.k.weersma@umcg.nl. RA and EMGV contributed equally.

Contributors RA, EMGdV, XJ, FS, KR, KS, ALM and WW: statistical analysis and interpretation of data. CYP and RKW: study supervision. KR, KS, XJ, FS and MP: performed experiments. RA, EMGdV, THK, SH, CS, TF, JRH, EM, FS, CYP and RKW wrote the manuscript. JZL, AFranke, DE and CAA performed genotyping, calling and QC. RA, EMGdV, ECG, XJ, FS, KR, KS, TF, TJW, ALM, WW, GA, DA, AB, NKB, UB, EB, KMB, CLB, MCB, MC, OC, AC, GD, JE, BE, DE, MF, EAMF, AFloreani, IF, DNG, GMH, BvH, KH, SH, JRH, FI, PI, BDJ, HL, WL, JZL, H-UM, MM, EM, PM, TM, AP, CRupp, CRust, RNS, CS, SS, ES, MSilverberg, BS, MSterneck, AT, LV, JV, AVV, BdV, KZ, RWC, MPM, MP, SMR, KNL, AFranke, CAA, THK, CYP, RKW, The UK-PSC Consortium and The International PSC Study Group contributed to sample and clinical data collection. All authors revised the manuscript for critical content and approved the final version.

Competing interests None declared.

Patient consent Obtained.

Ethics approval Subject recruitment was approved by the ethics committees or institutional review boards of all participating centres.

Provenance and peer review Not commissioned; externally peer reviewed.

Introduction

Primary sclerosing cholangitis (PSC) is a complex, cholestatic liver disease, in which chronic biliary inflammation and bile duct destruction leads to biliary fibrosis and liver cirrhosis, often in a slowly progressive manner.¹ PSC is characterised by a cholangiographic image of strictures interchanged with dilatations throughout the biliary tract. Reported incidence rates of PSC vary widely, with incidence rates of 0.91, 1.31 and 0.5 per 100 000 inhabitants per year for North America, Norway and the Netherlands, respectively.^{2,3} There is a male to female ratio of 2:1, and the disease can occur at any age, with a peak incidence around 40 years.³ There is a close association between PSC and IBD, and PSC patients are subject to a fivefold increased risk of developing colorectal carcinoma (CRC) when compared with the general population.³ In addition, PSC carries an excess risk of cholangiocarcinoma (CCA) which seems to be unrelated to the disease duration and the presence of liver cirrhosis.⁴ There is no effective medical therapy that can halt disease progression in PSC. The only curative option to date is liver transplantation.

The aetiology of PSC is still largely unknown. The aetiology is most likely to be multifactorial, in which the occurrence of PSC could be triggered by environmental factors in a genetic susceptible host.⁵ The relationship between susceptibility to PSC and environmental factors has been studied for several risk factors, of which smoking has repeatedly been shown to be associated with a decreased risk of developing PSC, independent of its protective effect in UC.⁶

Already in 1983, the identification of associations between PSC and HLA-B8 of the human leucocyte antigen (HLA) complex located on chromosome 6—harbouring several genes that are involved in antigen presentation and are important in immunity—raised interest in the role of genetics in PSC.⁷ This was amplified by a large Swedish study on PSC heritability demonstrated a nearly 4 to 17 times increased risk for first-degree relatives of patients with PSC to develop PSC when compared with the general population.⁸ The additional 3.3 times increased risk of UC and the presence of at least one concomitant immune-mediated disease outside the liver and bowel in approximately 20% to 25% of patients with PSC suggests a shared genetic component between these diseases.^{8–10} Over the last 5 years, the application of genome-wide association studies has resulted in an increasing insight in the genetic architecture of PSC, with the identification of 19 non-HLA risk loci at the time of writing.^{11–14}

Little is known about the genetic contribution to the severity and progression of complex diseases in general and PSC specifically. In Mendelian traits like cystic fibrosis and haemochromatosis, consortia efforts have led to the identification of robust and important modifier genes.^{15,16} If genetic variants would be associated with PSC phenotypes, this could enable risk stratification of patients with PSC according to disease behaviour and would lead to insight into pathogenetic mechanisms associated to disease progression. While translational research from susceptibility genes has yet to prove useful for the development of new drugs in complex disease, modifier genes may point towards pathways involved in disease progression amenable by pharmacological interventions.

The aim of this study is to identify genetic variants associated with PSC disease progression and development of complications, in a large, international, multicentre PSC cohort.

Methods

Study design and patients

Patients with PSC previously recruited throughout Europe, the USA and Canada and genotyped using the Immunochip by Liu *et al*¹³ were included. Subject recruitment was approved by the ethics committees or institutional review boards of all participating centres. Written informed consent was obtained from all participants. Patients of whom PSC diagnosis was revised after they were genotyped were excluded.

The following phenotypic data were collected for patient and disease characteristics: sex, date of birth, PSC subtype (small or large duct), date of PSC diagnosis, intrahepatic and/or extrahepatic disease, dominant strictures, concomitant IBD and type of IBD, date of IBD diagnosis and smoking status. Furthermore, follow-up data were collected for date and cause of death, date and indication of liver transplantation, occurrence and date of diagnosis of hepatocellular carcinoma (HCC), CCA, CRC, gallbladder carcinoma and occurrence and date of a colectomy.

PSC diagnosis was based on clinical, biochemical, cholangiographic and histological criteria, as formulated by the European Association for the Study of the Liver guidelines.¹⁷ IBD diagnosis was scored based on accepted endoscopic, radiological and histological criteria.¹⁸

PSC-related death was defined as death from liver failure, death from cholangiosepsis, death from CCA or death from gallbladder carcinoma. The time-to-event phenotype liver transplant-free survival was defined as the time between PSC diagnosis and the composite endpoint of either liver transplantation or PSC-related death.

We used genotype data of patients with PSC as previously described.¹³ Online supplementary appendix 1 describes the quality control applied to this dataset. A total of 130 422 single nucleotide polymorphisms (SNPs) for 3402 PSC samples remained after quality control and were used in the analysis.

Statistical analysis

The age at PSC diagnosis was expressed as median value and IQR. Categorical variables were expressed as numbers and percentages based on non-missing values.

Binary associations—Binary associations were calculated using multiple logistic regression. We corrected for clinical covariates by adding them to the regression model. To determine which clinical covariates to correct for, we performed a backward elimination procedure per binary phenotype. We started with the full model including sex, country, date of PSC diagnosis, established IBD diagnosis and smoking status and removed covariates from the model until the Akaike information criterion stabilised.

Time-to-event associations—Cox proportional hazards regression was used to estimate the effect of genetic variants on time-to-event PSC subphenotypes. Clinical variables that were significantly associated with the time-to-event phenotype in univariable Cox regression analyses ($p < 0.05$) were entered into a multivariable Cox model alongside the genotype. To visualise the effect of genotype on time-to-event phenotypes, Kaplan-Meier survival estimates were plotted (see methods described in online supplementary appendix 1).

We used the SNP2HLA software¹⁹ to impute classical HLA alleles from genotype data for *HLA-A*, *HLA-B*, *HLA-C*, *HLA-DRB1*, *HLA-DQA1*, *HLA-DQB1*, *HLA-DPA1* and *HLA-DPB1* and their corresponding amino acid polymorphisms from the genotype data (methods described in online supplementary appendix 1).

Mouse experiments and in vitro experiments on the role of *RSPO3* in PSC

Mouse experiments—C57BL/6 (B6) mice were purchased from Charles River (Milan, Italy). Normal C57BL/6 mice were sacrificed at the age of 8–10 weeks. Organs were harvested and washed by cold phosphate buffered saline. Cholangiocytes were isolated both from normal mice ($n=3$) and from mice ($n=3$) fed 0.1% 3,5-diethoxycarbonyl-1,4-dihydrocollidine (DDC) for 4 weeks, as a model of sclerosing cholangitis.²⁰ Total RNA was extracted and sequenced on an Illumina HiSeq 2000 machine (see online supplementary appendix 1 for more details).

In vitro experiments on human primary biliary tissue, cholangiocyte-like cells and hepatic stellate cells—Human primary biliary tissue was obtained from a liver and pancreas organ donor after obtaining informed consent from the donor's family. A section of the bile duct was excised and homogenised and RNA was extracted. Cholangiocyte-like cells (CLCs) were generated from human induced pluripotent stem cells and cultured. *RSPO3* expression was determined using quantitative PCR (qPCR) and compared with the housekeeping gene using the 2^{-Ct} method.²¹ Next to that, we used previously published microarray data to verify *RSPO3* expression.²² The R/Bioconductor package limma²³ was used to evaluate differential expression between pairs of conditions (human-induced pluripotent stem cells (hiPSCs) and CLCs and hiPSCs and primary bile duct). A linear model fit was applied and p values were corrected using the method of Benjamini and Hochberg.²⁴ Methods are further described in online supplementary appendix 1.

Primary human hepatic stellate cells were isolated and cultured from wedge sections of liver tissue, obtained from patients undergoing surgery at the Royal Free Hospital in London. Total RNA was extracted and retrotranscribed into complementary DNA, which was used for gene expression assessment with qPCR. Gene expression was compared with the housekeeping gene using the 2^{-Ct} method.

Results

Patient characteristics and natural history

Clinical characteristics of the PSC cohort are described in table 1. The cohort consisted of 2881 patients from Europe and 521 patients from the USA and Canada (see online supplementary table 1). A total of 2185 (65%) patients were male, and the median age at

PSC diagnosis was 38.6 years (IQR 28.0–50.1). Concomitant IBD was diagnosed in 2390 (75%) patients. The median follow-up was 8.7 years. In total, 874 (26%) patients underwent liver transplantation and 181 (5%) patients died of PSC-related causes. Over 11% of patients developed a malignancy, most often CCA (5.6%) or CRC (4.3%).

Genetic associations with binary subphenotypes

Genome-wide association analyses focusing on the occurrence of malignancy in patients with PSC revealed several suggestive associations (see online supplementary table 2). When comparing 107 patients with PSC autoimmune hepatitis (AIH) with 3159 patients with PSC but without AIH overlap, a strong genetic association in the *HLA-DQB1* gene was identified (top SNP rs3891175, $p=4.6\times 10^{-11}$, OR=2.41). After imputation of the classical HLA alleles, we found that the alleles DQA1*05:01 and DQB1*02:01 were most significantly associated with PSC/AIH overlap (p values of 3.8×10^{-11} and 1.8×10^{-07}). For other binary subphenotypes—small duct PSC, the occurrence of HCC, gallbladder carcinoma and proctocolectomy—no genetic associations were found.

Genetic associations with time-to-event subphenotypes

Next, we aimed to determine whether genetic variants are associated with important time-to-event variables reflecting the PSC disease course, for example, time between PSC diagnosis and the development of a carcinoma. For this, we developed a framework to perform immunochip-wide Cox proportional hazards analyses. We defined the liver transplant-free survival subphenotype as time from PSC diagnosis until liver transplantation or PSC-related death.

Univariable Cox regression analyses including clinical parameters showed statistically significant associations with the time to event endpoint transplant-free survival for sex, country, date of PSC diagnosis, established IBD diagnosis and smoking status. Next, we tested 130 422 SNPs for association with liver transplant-free survival using multivariable Cox proportional hazards regression, including the genotype effect alongside the significant clinical covariables. We found SNP rs853974 to be associated with liver transplant-free survival of patients with PSC at genome-wide significance ($p=6.07\times 10^{-9}$). Kaplan-Meier survival analysis showed a 50.9% (95% CI 41.5% to 59.5%) transplant-free survival for homozygous AA allele carriers of rs853974 compared with 72.8% (95% CI 69.6% to 75.7%) for GG carriers at 10 years after PSC diagnosis (figure 1A). AA homozygotes had a 2.14 (95% CI 1.66 to 2.76) increased hazard, indicating a 2.14 larger relative risk for need for liver transplantation or for PSC-related death compared with GG homozygotes. Figure 1B shows a regional plot of this observed association.

SNP rs853974 is located on chromosome 6. We did not identify a direct functional effect of this SNP on gene expression or regulatory features (see online supplementary appendix 1). We hypothesised that neighbouring gene *R-Spondin 3 (RSPO3)* would be the most likely positional candidate gene. The other neighbouring gene, *CENPW*, has a fundamental role in kinetochore assembly and is required for normal chromosome organisation and progress through mitosis and therefore not a good candidate. In addition to SNP rs853974,

additional suggestive genetic associations with time-to-event phenotypes liver transplant-free survival and time to CCA were found (see online supplementary table 3).

Expression of *RSPO3* in key liver-resident effector cells

To assess whether *RSPO3* is expressed in disease-relevant cells (cholangiocytes and hepatic stellate cells), we performed RNA sequencing on healthy and cholestatic cholangiocytes and multiple organs derived from normal C57BL/6 mice. *RSPO3* expression was 7 to 20 folds higher in cholangiocytes as compared with any of the organs. Furthermore, *RSPO3* expression was higher in healthy cholangiocytes than in cholestatic cholangiocytes (figure 2A).

Next, using microarrays, we assessed expression of *RSPO3* in hIPSCs, hIPSC-derived CLCs, and human PBD samples. *RSPO3* expression was significantly higher in CLCs and PBD cells compared with hIPSCs (figure 2B). This finding was confirmed by qPCR (figure 2C).

Since activated hepatic stellate cells are the main cells involved in liver fibrosis,²⁵ we also investigated expression of *RSPO3* in human culture-activated hepatic stellate cells. We isolated, cultured and activated human hepatic stellate cells of three patients without PSC. Using qPCR, we observed expression of the hepatic stellate cell marker gene cytoglobin B, as well as expression of *RSPO3* in all three subjects (figure 2D). We did not observe *RSPO3* expression in human CD4 and CD8 T lymphocytes (data not shown).

Discussion

To date, very few disease-modifying genes have been identified in rare complex diseases. Collaboration within the international PSC study group enabled the establishment of a cohort of unprecedented size, for an orphan disease such as PSC, enabling the investigation of genetic variation underlying the progression of PSC through time. Overall, it is a major challenge to determine genetic variants associated with survival, and only few genetic studies investigating this have been published.²⁶ We present a conceptually new method to determine associations between genetic variants and disease course, using genome-wide multivariable Cox proportional hazards regression analyses. Here, we identify a genome-wide significant association between SNP rs853974 —located close to the *RSPO3* gene— and liver transplant-free survival in PSC. Interestingly, this locus is not associated with PSC susceptibility and thus exemplifies different genetic regulation of disease susceptibility and disease progression.

This study is based on genotype data obtained using Illumina immunochip, a genotyping platform that densely covers genetic regions associated to immune-mediated diseases. Use of genome-wide association study (GWAS) arrays, that more uniformly cover genetic variants all over the genome, would have been ideal. However, a complete GWAS dataset for the entire international cohort was not available at the time of study. For that reason, we started with the available immunochip data. Given the positive findings in this study, a similar study on GWAS arrays data could very well be of additional value.

For the binary phenotype of developing CCA or not, we found an association at chromosome 5 at 150 Mb (see online supplementary table 2). Of interest, this locus contains an established genetic association with Crohn's disease susceptibility in the autophagy gene *IRGM*.²⁷ For the phenotype of developing colorectal carcinoma or not, we found an association at chromosome 14 at 35 Mb. This locus appeared not to be associated with sporadic colorectal cancer.

Since transplant-free survival is a combined and heterogeneous phenotype, we assessed to which extent the following three subgroups contribute to the association:

(1) transplanted patients with indication for transplantation 'end stage liver disease' and patients died because of 'liver failure'; (2) transplanted patients with indication for transplantation 'cholangiocarcinoma (cca)/high-grade dysplasia' and patients died because of 'cca or gallbladder carcinoma' and (3) transplanted patients with indication for transplantation 'intolerable complaints/pruritus/recurrent cholangitis' and patients died of 'cholangiosepsis'. We observed a stronger contribution of subgroups 1 and 3 to the association, indicating that the underlying biological mechanism is more likely one involved in causing progression of liver disease and/or cholangitis or cholangiosepsis rather than a mechanism involved in cancer development.

RSPO3 is a member of the R-Spondin protein family (R-Spondin 1–4).²⁸ These proteins are secreted agonists of the canonical Wnt/beta (β)-catenin signalling pathway.²⁸ They activate the pathway leading to induced transcription of Wnt target genes. Wnt/ β -catenin signalling plays a central role in embryogenesis, organogenesis and adult homeostasis and is a critical regulator of stem cell maintenance.^{29,30} RSPO3 is a ligand of the Frizzled 8 and LRP5/6 receptors.²⁸ In the canonical form of the Wnt pathway, binding of ligands to the Frizzled receptor and LRP5 or 6 coreceptors causes β -catenin to dephosphorylate in the cytoplasm. Accumulated β -catenin translocates to the nucleus where it binds to T cell factor/Lymphoid enhancer-binding factor, causing transcription of Wnt target genes—such as *Fibronectin*, *MMP-7*, *Twist* and *Snail*. These factors activate hepatic stellate cells and induce liver fibrosis. Blocking the Wnt signalling pathway using Dickkopf-1, a Wnt coreceptor antagonist, restores hepatic stellate cells quiescence in culture.³¹ Hence, Wnt signalling is involved in both progression and regression of liver fibrosis, either by inhibiting or promoting activation and survival of hepatic stellate cells.^{31,32} Also, RSPOs have been shown to facilitate hepatic stellate cell activation and promote hepatic fibrogenesis.³³ Here, we demonstrate that *RSPO3* is expressed in key effector cells involved in the pathogenesis of PSC. Since we have shown that patients with PSC that are homozygote AA carriers of rs853974 progress more rapidly towards PSC-related death or liver transplantation, *RSPO3* can be regarded a plausible candidate gene to be involved in PSC disease progression. Hypothetically, patients with PSC might benefit from reduction of *RSPO3* or generally canonical Wnt signalling.

In an immunochip analysis of the International IBD Genetics Consortium including over 75 000 individuals,³⁴ an intronic SNP rs9491697 in *RSPO3* (which is not in linkage disequilibrium with rs853974, $r^2=0.014$) was identified to be associated with Crohn's disease ($p=3.79\times 10^{-10}$, OR=1.077) but not with UC. Given the small number of patients

with Crohn's disease (n=357) within the present study, the lack of linkage disequilibrium between the two 'hit SNPs' and the fact that our multivariate Cox model corrected for IBD-status, the identified association signal does not seem to be driven by the co-occurrence of Crohn's disease in our cohort.

For several binary and time-to-event subphenotypes, we found suggestive genetic associations. Two additional SNPs, rs1532244 on chromosome 3 and rs17649817 on chromosome 5, were suggestively associated with transplant-free survival. Furthermore, one SNP, rs7731017, was suggestively associated with the presence of CCA. We investigated whether any of the candidate genes in the locus overlapped with genes identified in tumour sequencing studies of CCA. We did not find an overlap with the 32 genes reported to be significantly altered in intrahepatic, extrahepatic and gallbladder cancer by Nakamura *et al.*³⁵ When comparing the genes in our CCA locus with 1146 genes containing non-synonymous somatic mutations in intrahepatic CCA,³⁶ we found that the *SYNPO* gene was both in the list of 1146 genes of the sequencing study as well as in the locus that we identified to be associated with the presence of CCA. There is little known about this gene and there is no connection with oncogenesis. Another gene, *SP100*, was found in this study to be in the locus associated with time to CCA and is also in the list of 1146 genes. *SP100* is associated with autoimmune disease of the urogenital tract and also with PBC. Interestingly, anti-sp100 autoantibodies have been described for PBC.³⁷ The genetic association of *SP100* with both PBC and the time to CCA within patients with PSC as well as the existence of anti-sp100 autoantibodies makes this an interesting gene for future follow-up studies.

When comparing patients with PSC-AIH with patients with PSC but without AIH, we found a strong genetic association with PSC-AIH in the HLA-DQB1 gene. The identified variant was tagging the classical HLA haplotypes DQA1*05:01 and DQB1*02:01. These associations overlap the associations found by a previous genome-wide association study of AIH type 1 in the Netherlands,³⁸ suggesting that the genetic basis for AIH type 1 pathogenesis is similar for patients with isolated AIH type 1 compared with patients with PSC-AIH.

This study is limited by the relatively small cohort size when compared with other GWAS studies that incorporate tens of thousands of samples. The resulting lack of statistical power may have played a role in the binary analyses, in which suggestive hits were found for CCA and CRC but genome-wide significance was not reached. However, PSC is a rare disease, and the present study has included patients recruited throughout the world in a joined effort. It is therefore not expected that a larger cohort of PSC cases will become available soon.

In conclusion, we present the largest association study of PSC genotypes with disease phenotypes to date. We identified several genetic variants associated with PSC disease course. Specifically, we report rs853974 to be genome-wide significantly associated with liver transplant-free survival in PSC. Findings of candidate gene *RSPO3* being expressed in both mouse and human cholangiocytes and human-activated hepatic stellate cells warrant further assessments of the role of this potential key PSC modifier gene.

Supplementary Material

Refer to Web version on PubMed Central for supplementary material.

Authors

Rudi Alberts¹, Elisabeth M G de Vries², Elizabeth C Goode^{3,4}, Xiaojun Jiang^{5,6}, Fotis Sampaziotis^{7,8}, Krista Rombouts⁹, Katrin Böttcher⁹, Trine Folseraas^{5,6}, Tobias J Weismüller^{10,11}, Andrew L Mason¹², Weiwei Wang¹², Graeme Alexander¹³, Domenico Alvaro¹⁴, Annika Bergquist¹⁵, Niklas K Björkström¹⁶, Ulrich Beuers², Einar Björnsson¹⁷, Kirsten Muri Boberg^{5,18}, Christopher L Bowlus¹⁹, Maria C Bragazzi²⁰, Marco Carbone²¹, Olivier Chazouillères²², Angela Cheung²³, Georgios Dalekos²⁴, John Eaton²⁵, Bertus Eksteen²⁶, David Ellinghaus²⁷, Martti Färkkilä²⁸, Eleonora A M Festen¹, Annarosa Floreani²⁹, Irene Franceschet³⁰, Daniel Nils Gotthardt³¹, Gideon M Hirschfield³², Bart van Hoek³³, Kristian Holm^{5,6}, Simon Hohenester³⁴, Johannes Roksund Hov^{5,6}, Floris Imhann¹, Pietro Invernizzi²¹, Brian D Juran²⁵, Henrike Lenzen³⁵, Wolfgang Lieb^{36,37}, Jimmy Z Liu³⁸, Hanns-Ulrich Marschall³⁹, Marco Marziani⁴⁰, Espen Melum^{5,6}, Piotr Milkiewicz⁴¹, Tobias Müller⁴², Albert Pares⁴³, Christian Rupp⁴⁴, Christian Rust⁴⁵, Richard N Sandford⁴, Christoph Schramm⁴⁶, Stefan Schreiber^{27,47}, Erik Schrumpf^{6,48}, Mark S Silverberg⁴⁹, Brijesh Srivastava⁴, Martina Sterneck⁵⁰, Andreas Teufel⁵¹, Ludovic Vallier^{7,38}, Joanne Verheij⁵², Arnau Vich Vila¹, Boudewijn de Vries¹, Kalliopi Zachou⁵³, The International PSC Study Group, The UK PSC Consortium, Roger W Chapman⁵⁴, Michael P Manns^{10,11}, Massimo Pinzani⁹, Simon M Rushbrook³, Konstantinos N Lazaridis²⁵, Andre Franke²⁷, Carl A Anderson³⁸, Tom H Karlsen^{5,6}, Cyriel Y Ponsioen², and Rinse K Weersma¹

Affiliations

¹Department of Gastroenterology and Hepatology, University of Groningen and University Medical Centre Groningen, Groningen, The Netherlands ²Department of Gastroenterology and Hepatology, Academic Medical Center, Amsterdam, The Netherlands ³Norwich Medical School, Faculty of Medicine and Health Sciences, University of East Anglia, Norwich, UK ⁴Academic Department of Medical Genetics, University of Cambridge, Cambridge, UK ⁵Norwegian PSC Research Center, Division of Cancer Medicine, Surgery and Transplantation, Oslo University Hospital, Rikshospitalet, Oslo, Norway ⁶Research Institute of Internal Medicine, Oslo University Hospital, Rikshospitalet, Oslo, Norway ⁷Department of Surgery, Wellcome Trust-Medical Research Council Stem Cell Institute, Anne McLaren Laboratory, University of Cambridge, Cambridge, UK ⁸Department of Surgery, University of Cambridge and NIHR Cambridge Biomedical Research Centre, Cambridge, UK ⁹Institute for Liver and Digestive Health, University College London, Royal Free Hospital, London, UK ¹⁰Department of Gastroenterology Hepatology and Endocrinology, Hannover Medical School, Hannover, Germany ¹¹Integrated Research and Treatment Center-Transplantation (IFB-tx) Hannover Medical School, Hannover, Germany ¹²Division of Gastroenterology and Hepatology, University of Alberta, Edmonton, Alberta, Canada ¹³Department of Medicine, Division of

Hepatology, University of Cambridge, Cambridge, UK ¹⁴Department of Clinical Medicine, Division of Gastroenterology, Sapienza University of Rome, Rome, Italy ¹⁵Center for Digestive Diseases, Karolinska University Hospital, Karolinska Institutet, Stockholm, Sweden ¹⁶Department of Medicine Huddinge, Center for Infectious Medicine, Karolinska Institutet, Karolinska University Hospital, Stockholm, Sweden ¹⁷Department of Internal Medicine, Division of Gastroenterology and Hepatology, Landspítali University Hospital, Reykjavik, Iceland ¹⁸K G Jebsen Inflammation Research Centre and Institute of Clinical Medicine, University of Oslo, Oslo, Norway ¹⁹Division of Gastroenterology and Hepatology, University of California Davis, Davis, California, USA ²⁰Sapienza University of Rome, Medico-Surgical Sciences and Biotechnologies, Rome, Italy ²¹Department of Medicine and Surgery, Program for Autoimmune Liver Diseases, International Center for Digestive Health, University of Milan-Bicocca, Milan, Italy ²²Department of Hepatology, AP-HP, Hôpital Saint Antoine, Paris, France ²³General Internal Medicine, University Health Network, Toronto General Hospital, Toronto, Canada ²⁴Department of Medicine and Research Laboratory of Internal Medicine, Medical School, University of Thessaly, Larissa, Greece ²⁵Division of Gastroenterology and Hepatology, Mayo Clinic Minnesota, Rochester, Minnesota, USA ²⁶Department of Medicine, Snyder Institute of Chronic Diseases, University of Calgary, Calgary, Canada ²⁷Institute of Clinical Molecular Biology, Christian-Albrechts-University, Kiel, Germany ²⁸Department of Medicine, Division of Gastroenterology, Helsinki University Hospital, Helsinki, Finland ²⁹Department of Surgical Oncological and Gastroenterological Sciences, University of Padova, Padova, Italy ³⁰Department of Surgery Oncology and Gastroenterology, University of Padova, Padova, Italy ³¹Department of Medicine, University Hospital of Heidelberg, Heidelberg, Germany ³²Centre for Liver Research, NIHR Biomedical Research Unit, University of Birmingham, Birmingham, UK ³³Department of Gastroenterology and Hepatology, Leiden University Medical Centre, Leiden, The Netherlands ³⁴Department of Medicine II, Liver Center Munich, University of Munich, Munich, Germany ³⁵Department of Gastroenterology Hepatology and Endocrinology, Hannover Medical School, Hannover, Germany ³⁶Popgen Biobank, University Hospital Schleswig-Holstein, Christian-Albrechts-University, Kiel, Germany ³⁷Institute for Epidemiology, Christian-Albrechts University, Kiel, Germany ³⁸Wellcome Trust Genome Campus, Wellcome Trust Sanger Institute, Cambridge, UK ³⁹Department of Molecular and Clinical Medicine, Institute of Medicine, Sahlgrenska Academy, Gothenburg, Sweden ⁴⁰Department of Gastroenterology, Università Politecnica delle Marche, Ospedali Riuniti University Hospital, Ancona, Italy ⁴¹Liver and Internal Medicine Unit, Medical University of Warsaw, Warsaw, Poland ⁴²Department of Internal Medicine Hepatology and Gastroenterology, Charité Universitätsmedizin Berlin, Campus Virchow Klinikum, Berlin, Germany ⁴³Liver Unit Hospital Clinic, IDIBAPS, CIBERehd, University of Barcelona, Barcelona, Spain ⁴⁴Department of Internal Medicine IV, University Hospital of Heidelberg, Heidelberg, Germany ⁴⁵Department of Medicine I, Krankenhaus Barmherzige Brüder, Munich, Germany ⁴⁶1st Department of Medicine, University Medical Center Hamburg-Eppendorf, Hamburg, Germany ⁴⁷Department

for General Internal Medicine, Christian-Albrechts-University, Kiel, Germany
⁴⁸Section of Gastroenterology, Department of Transplantation Medicine, Division of Cancer, Surgery and Transplantation, Oslo University Hospital, Rikshospitalet, Oslo, Norway
⁴⁹Inflammatory Bowel Disease (IBD) Group Zane Cohen Centre for Digestive Diseases, Mount Sinai Hospital Toronto, Ontario, Canada
⁵⁰Department of Hepatobiliary Surgery and Transplantation, University Medical Center Hamburg-Eppendorf, Hamburg, Germany
⁵¹1st Department of Medicine, University of Mainz, Mainz, Germany
⁵²Department of Pathology, Academic Medical Center, Amsterdam, The Netherlands
⁵³Department of Internal Medicine, University of Thessaly, Larissa, Greece
⁵⁴Department of Hepatology, John Radcliffe University Hospitals NHS Trust, Cambridge, UK

Acknowledgments

We thank all patients with PSC for participating in this study. We acknowledge the members of the International PSC Study Group and the UKPSC Consortium for their participation. We acknowledge Lukas Tittman for providing samples.

Funding RA is supported by a PSC Partners Seeking a Cure grant ‘Unraveling genetics driving PSC subphenotypes: anIPSCSG study’. LV and FS are supported by the ERC grant Relieve IMDs and the Cambridge Hospitals National Institute for Health Research Biomedical Research Center. SH is supported by a grant from the German Research Community (DFG), grant HO 4460/2–1. TM is supported by the German Research Community (DFG), grants MU 2864/1–1 and MU 2864/1–3. KNL is supported by the NIH RO1 DK 084960 and Sigismunda Palumbo Charitable Trust. EAMF is supported by a Career Development Grant from Dutch Digestive Foundation (Maag Lever Darm Stichting, MLDS). RKW is supported by a VIDI grant (016.136.308) from the Netherlands Organization for Scientific Research (NWO) and a PSC Partners Seeking a Cure grant ‘The Exome in PSC’.

References

1. Hirschfield GM, Karlsen TH, Lindor KD, et al. Primary sclerosing cholangitis. *Lancet*. 2013; 382:1587–99. [PubMed: 23810223]
2. Boonstra K, Beuers U, Ponsioen CY. Epidemiology of primary sclerosing cholangitis and primary biliary cirrhosis: a systematic review. *J Hepatol*. 2012; 56:1181–8. [PubMed: 22245904]
3. Boonstra K, Weersma RK, van Erpecum KJ, et al. Population-based epidemiology, malignancy risk, and outcome of primary sclerosing cholangitis. *Hepatology*. 2013; 58:2045–55. [PubMed: 23775876]
4. Boberg KM, Lind GE. Primary sclerosing cholangitis and malignancy. *Best Pract Res Clin Gastroenterol*. 2011; 25:753–64. [PubMed: 22117640]
5. Eaton JE, Talwalkar JA, Lazaridis KN, et al. Pathogenesis of primary sclerosing cholangitis and advances in diagnosis and management. *Gastroenterology*. 2013; 145:521–36. [PubMed: 23827861]
6. Mitchell SA, Thyssen M, Orchard TR, et al. Cigarette smoking, appendectomy, and tonsillectomy as risk factors for the development of primary sclerosing cholangitis: a case control study. *Gut*. 2002; 51:567–73. [PubMed: 12235082]
7. Chapman RW, Varghese Z, Gaul R, et al. Association of primary sclerosing cholangitis with HLA-B8. *Gut*. 1983; 24:38–41. [PubMed: 6600227]
8. Bergquist A, Montgomery SM, Bahmanyar S, et al. Increased risk of primary sclerosing cholangitis and ulcerative colitis in first-degree relatives of patients with primary sclerosing cholangitis. *Clin Gastroenterol Hepatol*. 2008; 6:939–43. [PubMed: 18674735]
9. Lamberts LE, Janse M, Haagsma EB, et al. Immune-mediated diseases in primary sclerosing cholangitis. *Dig Liver Dis*. 2011; 43:802–6. [PubMed: 21700515]
10. Saarinen S, Olerup O, Broomé U. Increased frequency of autoimmune diseases in patients with primary sclerosing cholangitis. *Am J Gastroenterol*. 2000; 95:3195–9. [PubMed: 11095341]

11. Folseraas T, Melum E, Rausch P, et al. Extended analysis of a genome-wide association study in primary sclerosing cholangitis detects multiple novel risk loci. *J Hepatol.* 2012; 57:366–75. [PubMed: 22521342]
12. Ellinghaus D, Folseraas T, Holm K, et al. Genome-wide association analysis in primary sclerosing cholangitis and ulcerative colitis identifies risk loci at GPR35 and TCF4. *Hepatology.* 2013; 58:1074–83. [PubMed: 22821403]
13. Liu JZ, Hov JR, Folseraas T, et al. Dense genotyping of immune-related disease regions identifies nine new risk loci for primary sclerosing cholangitis. *Nat Genet.* 2013; 45:670–5. [PubMed: 23603763]
14. Ellinghaus D, Jostins L, Spain SL, et al. Analysis of five chronic inflammatory diseases identifies 27 new associations and highlights disease-specific patterns at shared loci. *Nat Genet.* 2016; 48:510–8. [PubMed: 26974007]
15. Bartlett JR, Friedman KJ, Ling SC, et al. Genetic modifiers of liver disease in cystic fibrosis. *JAMA.* 2009; 302:1076–83. [PubMed: 19738092]
16. Stickel F, Buch S, Zoller H, et al. Evaluation of genome-wide loci of iron metabolism in hereditary hemochromatosis identifies PCSK7 as a host risk factor of liver cirrhosis. *Hum Mol Genet.* 2014; 23:3883–90. [PubMed: 24556216]
17. Lennard-Jones JE. Classification of inflammatory bowel disease. *Scand J Gastroenterol Suppl.* 1989; 170:6–19.
18. European Association for the Study of the Liver'. EASL Clinical Practice Guidelines: management of cholestatic liver diseases. *J Hepatol.* 2009; 51:237–67. [PubMed: 19501929]
19. Jia X, Han B, Onengut-Gumuscu S, et al. Imputing amino acid polymorphisms in human leukocyte antigens. *PLoS One.* 2013; 8:e64683. [PubMed: 23762245]
20. Fickert P, Stöger U, Fuchsbichler A, et al. A new xenobiotic-induced mouse model of sclerosing cholangitis and biliary fibrosis. *Am J Pathol.* 2007; 171:525–36. [PubMed: 17600122]
21. Schmittgen TD, Livak KJ. Analyzing real-time PCR data by the comparative CT method. *Nat Protoc.* 2008; 3:1101–8. [PubMed: 18546601]
22. Sampaziotis F, Cardoso de Brito M, Madrigal P, et al. Cholangiocytes derived from human induced pluripotent stem cells for disease modeling and drug validation. *Nat Biotechnol.* 2015; 33:845–52. [PubMed: 26167629]
23. Smyth GK. Linear models and empirical bayes methods for assessing differential expression in microarray experiments. *Stat Appl Genet Mol Biol.* 2004; 3:1–25.
24. Benjamini Y, Hochberg Y. Controlling the false discovery rate: a practical and powerful approach to multiple testing. *J R Stat Soc B.* 1995; 57:289–300.
25. Mederacke I, Hsu CC, Troeger JS, et al. Fate tracing reveals hepatic stellate cells as dominant contributors to liver fibrosis independent of its aetiology. *Nat Commun.* 2013; 4:2823. [PubMed: 24264436]
26. Wu C, Li D, Jia W, et al. Genome-wide association study identifies common variants in SLC39A6 associated with length of survival in esophageal squamous-cell carcinoma. *Nat Genet.* 2013; 45:632–8. [PubMed: 23644492]
27. Parkes M, Barrett JC, Prescott NJ, et al. Sequence variants in the autophagy gene IRGM and multiple other replicating loci contribute to Crohn's disease susceptibility. *Nat Genet.* 2007; 39:830–2. [PubMed: 17554261]
28. Nam JS, Turcotte TJ, Smith PF, et al. Mouse cristin/R-spondin family proteins are novel ligands for the frizzled 8 and LRP6 receptors and activate beta-catenin-dependent gene expression. *J Biol Chem.* 2006; 281:13247–57. [PubMed: 16543246]
29. van Amerongen R, Nusse R. Towards an integrated view of Wnt signaling in development. *Development.* 2009; 136:3205–14. [PubMed: 19736321]
30. de Lau WB, Snel B, Clevers HC. The R-spondin protein family. *Genome Biol.* 2012; 13:242. [PubMed: 22439850]
31. Cheng JH, She H, Han YP, et al. Wnt antagonism inhibits hepatic stellate cell activation and liver fibrosis. *Am J Physiol Gastrointest Liver Physiol.* 2008; 294:G39–G49. [PubMed: 18006602]
32. Myung SJ, Yoon JH, Gwak GY, et al. Wnt signaling enhances the activation and survival of human hepatic stellate cells. *FEBS Lett.* 2007; 581:2954–8. [PubMed: 17544413]

33. Xinguang Y, Huixing Y, Linlin W, et al. RSPOs facilitated HSC activation and promoted hepatic fibrogenesis. *Oncotarget*. 2016; 5
34. Jostins L, Ripke S, Weersma RK, et al. Host-microbe interactions have shaped the genetic architecture of inflammatory bowel disease. *Nature*. 2012; 491:119–24. [PubMed: 23128233]
35. Nakamura H, Arai Y, Totoki Y, et al. Genomic spectra of biliary tract cancer. *Nat Genet*. 2015; 47:1003–10. [PubMed: 26258846]
36. Gao Q, Zhao YJ, Wang XY, et al. Activating mutations in PTPN3 promote cholangiocarcinoma cell proliferation and migration and are associated with tumor recurrence in patients. *Gastroenterology*. 2014; 146:1397–407. [PubMed: 24503127]
37. Norman GL, Bialek A, Encabo S, et al. Is prevalence of PBC underestimated in patients with systemic sclerosis? *Dig Liver Dis*. 2009; 41:762–4. [PubMed: 19357001]
38. de Boer YS, van Gerven NM, Zwiars A, et al. Genome-wide association study identifies variants associated with autoimmune hepatitis type 1. *Gastroenterology*. 2014; 147:443–52. [PubMed: 24768677]

Significance of this study

What is already known on this subject?

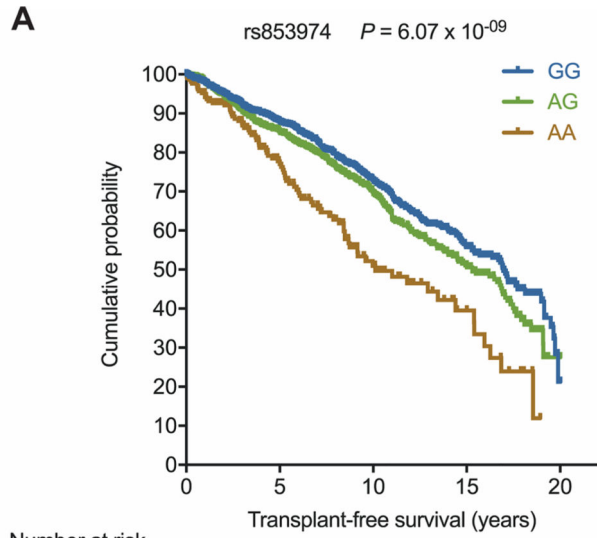
- ▶ Several case–control genome-wide association studies have revealed 20 susceptibility loci for primary sclerosing cholangitis.
- ▶ Little is known about the genetic contribution to the severity and progression of complex diseases in general and primary sclerosing cholangitis in particular.
- ▶ *RSPO3* plays a role in the activation of the canonical Wnt signalling pathway, which is involved in liver fibrosis.

What are the new findings?

- ▶ The genetic variant rs853974 is genome-wide significantly associated with liver transplant-free survival in primary sclerosing cholangitis.
- ▶ Candidate gene *RSPO3* is expressed in both murine and human cholangiocytes and in human hepatic stellate cells.
- ▶ Three new loci were found to be associated with time to cholangiocarcinoma in patients with primary sclerosing cholangitis.

How might it impact on clinical practice in the foreseeable future?

- ▶ Through its effect on liver fibrosis, *RSPO3* could play an important role in PSC disease progression, and insight in its mechanism could lead to new therapeutic targets.
- ▶ Furthermore, since we demonstrated that genetic variants are associated with PSC disease progression, genetics could provide a tool for risk stratification of patients with PSC in the future.



Number at risk

GG	1397	849	413	149	2
AG	1004	622	279	106	3
AA	210	108	42	15	0

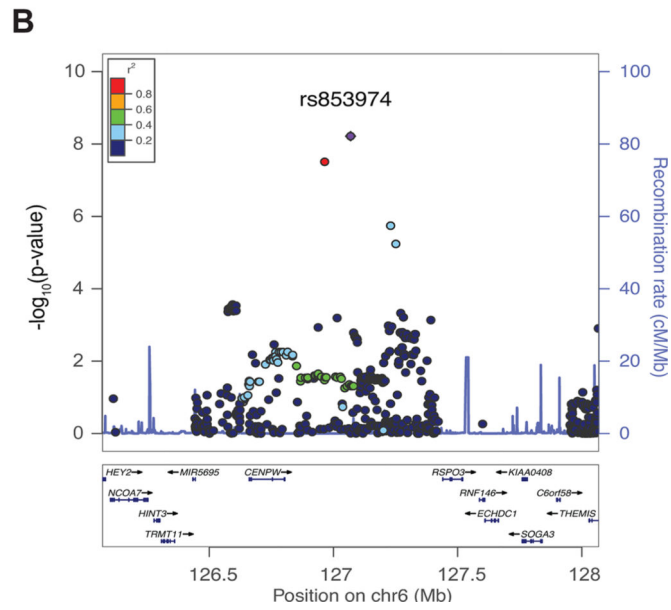


Figure 1. Association of genetic variants on chromosome 6 with transplant-free survival of patients with PSC. (A) Kaplan-Meier curves of transplant-free survival. Patients are stratified according to their genotype for SNP rs853974. The p value for genotype effect in the Cox proportional hazards model is $p=6.07 \cdot 10^{-09}$. (B) Regional association plot for transplant-free survival. The Y-axis shows the $-\log_{10}(\text{p value})$ for genotype effect in the Cox proportional hazards model. PSC, primary sclerosing cholangitis; SNP, single nucleotide polymorphism.

Author Manuscript
Author Manuscript
Author Manuscript
Author Manuscript

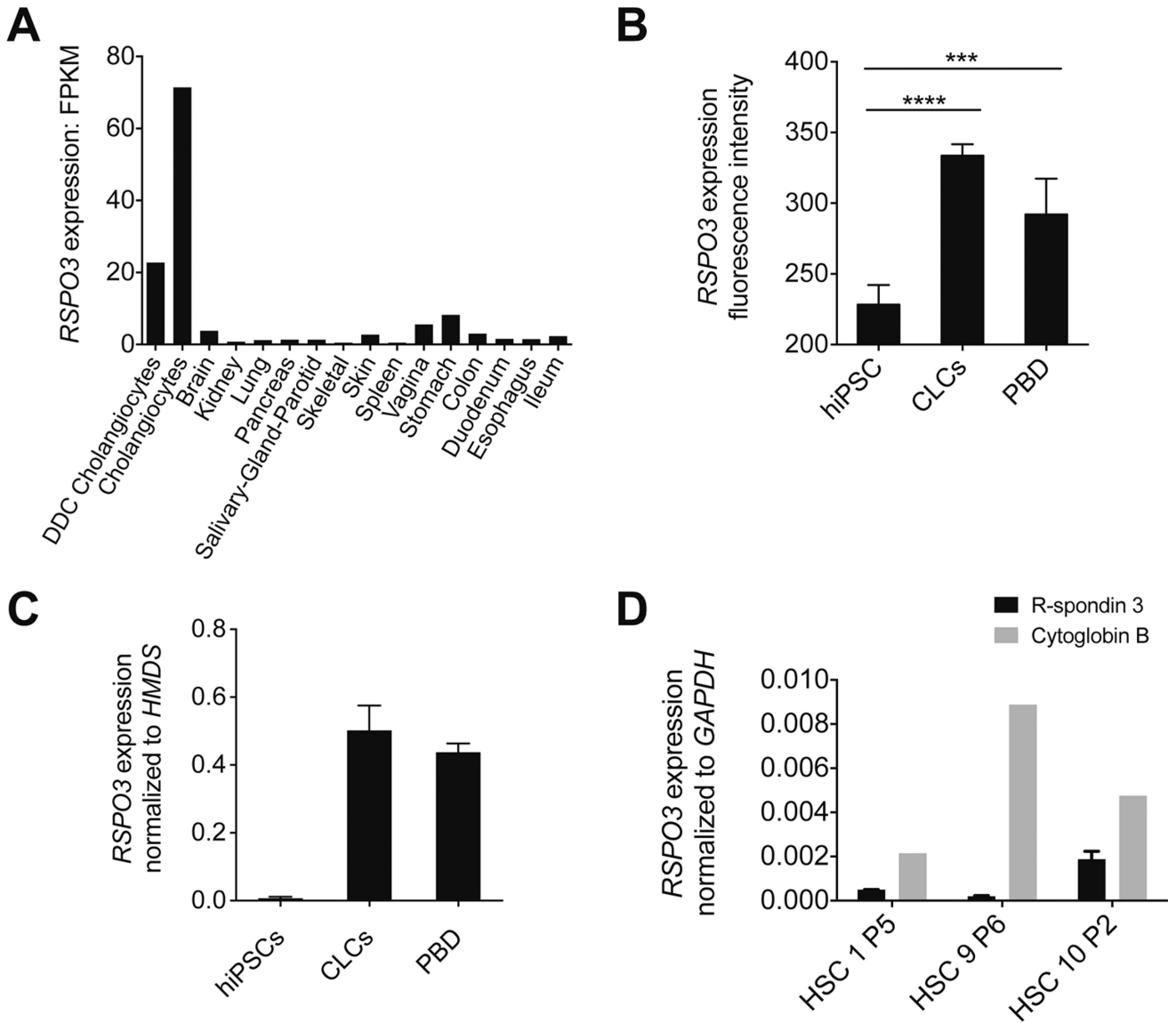


Figure 2. *RSPO3* expression in mouse cholangiocytes and in human CLCs, PBD and HSCs. (A) RNA sequencing analysis of *RSPO3* expression in DDC-induced cholestatic cholangiocytes, healthy cholangiocytes and multiple organs of normal C57BL/6 mice. (B) Microarray *RSPO3* expression in hiPSCs, CLCs and PBD. *RSPO3* expression is significantly increased in CLCs and in PBD compared with hiPSCs. n=3; error bars, SD. Asterisks represent statistical significance (****adjusted p<0.0001, ***adjusted p<0.001, Benjamini and Hochberg corrected p values). (C) Quantitative real-time PCR analysis demonstrating the expression of *RSPO3* in hiPSC-derived CLCs and PBD samples compared with expression in hiPSCs. Expression levels are fold changes compared with housekeeping gene *HMDS* calculated using the 2^{-Ct} method. (D) Quantitative real-time PCR analysis showing expression of *RSPO3* and cytoglobin B in three patients without PSC. Cytoglobin B messenger RNA expression was evaluated as specific HSC marker. Target genes were normalised using *GAPDH* as endogenous control and their relative expression was

calculated with the 2^{-Ct} method. CLCs, cholangiocyte-like-cells; DDC, 3,5-diethoxycarbonyl-1,4-dihydrocollidine; FPKM, fragments per kilobase of exon per million mapped reads; hiPSC, human-induced pluripotent stem cells; HSC, hepatic stellate cell; PBD, primary bile duct.

Author Manuscript

Author Manuscript

Author Manuscript

Author Manuscript

Table 1

Clinical characteristics of the PSC cohort consisting of 3402 patients

Variable	Groups	Number (%)
Age at PSC diagnosis *		38.6 years old (28.0–50.1)
Sex	Male	2185 (64.7)
	Female	1193 (35.3)
	Missing	24 (0.7)
Main diagnosis	PSC	3159 (94.6)
	Small duct PSC	75 (2.2)
	PSC with AIH overlap	107 (3.2)
	Missing	61 (1.8)
Liver transplantation	Yes	874 (26.3)
	No	2444 (73.7)
	Missing	84 (2.5)
Colectomy	Yes	419 (12.6)
	No	2897 (87.4)
	missing	86 (2.5)
IBD	No IBD	816 (25.5)
	Ulcerative colitis	1940 (60.5)
	Crohn's disease	357 (11.1)
	IBD-U	93 (2.9)
	Missing	196 (5.8)
Cholangiocarcinoma	Yes	188 (5.6)
	No	3147 (94.4)
	Missing	67 (2.0)
Colorectal carcinoma	Yes	127 (4.3)
	No	2822 (95.7)
	Missing	453 (13.3)
Gall bladder carcinoma	Yes	30 (1.0)
	No	2977 (99.0)
	Missing	395 (11.6)
Hepatocellular carcinoma	Yes	22 (0.7)
	No	2984 (99.3)
	Missing	396 (11.6)
Smoking status	Smoker	140 (6.0)
	Ex-smoker	529 (22.7)
	Non-smoker	1657 (71.2)
	Missing	1076 (31.6)
Death	Non-PSC related	47 (1.5)

Variable	Groups	Number (%)
	Liver failure	66 (2.1)
	Cholangiosepsis	18 (0.6)
	Gallbladder carcinoma	12 (0.4)
	Cholangiocarcinoma	85 (2.6)
	Hepatocellular carcinoma	6 (0.2)
	Colorectal carcinoma in case of coexisting IBD	3 (0.1)
	Alive	2977 (92.6)
	Missing	188 (5.5)

Quantitative data are expressed as counts and percentages excluding missing data.

* Values shown as median (IQR).

AIH, autoimmune hepatitis; IBD-U, inflammatory bowel disease unclassified; PSC, primary sclerosing cholangitis.

Author Manuscript

Author Manuscript

Author Manuscript

Author Manuscript