

UC Irvine

UC Irvine Previously Published Works

Title

Resistant Hypertension after Hypertensive Intracerebral Hemorrhage Is Associated with More Medical Interventions and Longer Hospital Stays without Affecting Outcome.

Permalink

<https://escholarship.org/uc/item/0b6831x6>

Journal

Frontiers in neurology, 8(MAY)

ISSN

1664-2295

Authors

Hong, Daojun
Stradling, Dana
Dastur, Cyrus K
[et al.](#)

Publication Date

2017

DOI

10.3389/fneur.2017.00184

Peer reviewed



Resistant Hypertension after Hypertensive Intracerebral Hemorrhage Is Associated with More Medical Interventions and Longer Hospital Stays without Affecting Outcome

Daojun Hong^{1,2}, Dana Stradling¹, Cyrus K. Dastur¹, Yama Akbari¹, Leonid Groysman¹, Lama Al-Khoury¹, Jefferson Chen³, Steven L. Small¹ and Wengui Yu^{1*}

OPEN ACCESS

Edited by:

Andreas Charidimou,
Harvard Medical School, USA

Reviewed by:

Gregoire Boulouis,
Paris Descartes University, France
Vincent Thijs,
Florey Institute of Neuroscience
and Mental Health, Australia

*Correspondence:

Wengui Yu
wyu@uci.edu

Specialty section:

This article was submitted
to Stroke,
a section of the journal
Frontiers in Neurology

Received: 04 March 2017

Accepted: 18 April 2017

Published: 03 May 2017

Citation:

Hong D, Stradling D, Dastur CK,
Akbari Y, Groysman L, Al-Khoury L,
Chen J, Small SL and Yu W (2017)
Resistant Hypertension after
Hypertensive Intracerebral
Hemorrhage Is Associated with
More Medical Interventions and
Longer Hospital Stays without
Affecting Outcome.
Front. Neurol. 8:184.
doi: 10.3389/fneur.2017.00184

¹ Department of Neurology, University of California at Irvine, Irvine, CA, USA, ² Department of Neurology, The First Affiliated Hospital, Nanchang University, Nanchang, Jiangxi, China, ³ Department of Neurosurgery, University of California at Irvine, Irvine, CA, USA

Background: Hypertension (HTN) is the most common cause of spontaneous intracerebral hemorrhage (ICH). The aim of this study is to investigate the role of resistant HTN in patients with ICH.

Methods and results: We conducted a retrospective study of all consecutive ICH admissions at our medical center from November 2013 to October 2015. The clinical features of patients with resistant HTN (requiring four or more antihypertensive agents to keep systolic blood pressure <140 mm Hg) were compared with those with responsive HTN (requiring three or fewer agents). Of the 152 patients with hypertensive ICH, 48 (31.6%) had resistant HTN. Resistant HTN was independently associated with higher body mass index and proteinuria. Compared to the responsive group, patients with resistant HTN had higher initial blood pressures and greater requirement for ventilator support, hematoma evacuation, hypertonic saline therapy, and nicardipine infusion. Resistant HTN increases length of stay (LOS) in the intensive care unit (ICU) (4.2 vs 2.1 days; $p = 0.007$) and in the hospital (11.5 vs 7.0 days; $p = 0.003$). Multivariate regression analysis showed that the rate of systolic blood pressure >140 mm Hg and duration of nicardipine infusion were independently associated with LOS in the ICU. There was no significant difference in hematoma expansion and functional outcome at hospital discharge between the two groups.

Conclusion: Resistant HTN in patients with ICH is associated with more medical interventions and longer LOS without effecting outcome at hospital discharge.

Keywords: intracerebral hemorrhage, resistant hypertension, intensive care unit, length of stay, functional outcome

INTRODUCTION

Uncontrolled hypertension (HTN) is the most common cause of spontaneous intracerebral hemorrhage (ICH) (1, 2). Hypertensive ICH is a type of stroke with intraparenchymal bleeding from hypertensive damage to blood vessel walls. Chronic HTN produces microangiopathy characterized by lipohyalinosis, fibrinoid necrosis, and development of Charcot-Bouchard aneurysms, affecting penetrating arteries throughout the brain. The predilection sites for hypertensive ICH include the basal ganglia (40–50%), lobar regions (20–50%), thalamus (10–15%), pons (5–12%), cerebellum (5–10%), and other brainstem sites (1–5%) (3, 4).

Data from numerous studies have identified high systolic blood pressure (SBP) as the major risk factor for ICH (5–7). SBP variability predicts poor outcome and neurological deterioration (8–10).

Two large randomized controlled trials have demonstrated that early intensive lowering of SBP to less than 140 mm Hg is safe without significant outcome impact (11, 12). Acute lowering of SBP to 140 mm Hg has been recommended for the management of spontaneous ICH (13).

However, it is challenging to promptly and effectively control SBP in patients at risk for resistant HTN (14–17). Resistant HTN is defined as blood pressure that remains above normal despite of concurrent use of three antihypertensive agents of different classes (15, 16). Data derived from cross-sectional studies and *post hoc* analyses of clinical trials have estimated the prevalence of resistant HTN to be about 8–15% of all patients being treated for HTN (17, 18). Currently, little is known about resistant HTN in patients with ICH. We sought to evaluate the potential role of resistant HTN in ICH.

MATERIALS AND METHODS

Patients

All consecutive ICH admissions at the University of California, Irvine Medical Center between November 2013 and October 2015 were reviewed retrospectively. The patient list was compiled by searching the electronic medical record using International Classification of Diseases Ninth Revision code 431 and by stroke center primary data collection for the AHA *Getting with the Guidelines registry*. We then conducted extensive chart review to identify those with hypertensive ICH.

Study Protocol

The screening of hypertensive ICH is described in **Figure 1**. Exclusion criteria included death or comfort care within 72 h of admission, all non-hypertensive ICH, isolated intraventricular hemorrhage, and ICH with subdural hemorrhage. Non-hypertensive ICH was defined as primary ICH without clinical evidence of HTN during the hospital stay. Patients with both HTN and cerebral amyloid angiopathy (CAA) or coagulopathy were counted as hypertensive ICH.

Hypertensive ICH patients were divided into two groups: patients on four or more antihypertensive agents at discharge

(resistant group) and patients on three or fewer antihypertensive agents (responsive group) per AHA guidelines (15).

The following demographics and medical history were collected for patients with hypertensive ICH: age, gender, race, body mass index (BMI), social history, medical history, and home medications (antiplatelet, anticoagulant, and antihypertensive agents). Clinical data collected were initial SBP and diastolic blood pressure, Glasgow coma scale score, hyponatremia, serum creatinine, urine protein, ICH location, ICH volume, midline shift, ICH score, ICH volume increase within 24 h, fever (>38°C), pneumonia or other infections, deep vein thrombosis (DVT), seizure activities, rate of SBP > 140 mm Hg during the intensive care unit (ICU) stay, ventilator support, external ventricular drainage (EVD), hematoma evacuation, use of hypertonic saline, duration of nicardipine infusion, length of stay (LOS) in the ICU and the hospital, disposition, number of oral antihypertensive agents, and modified Rankin Scale (mRS) score at discharge.

The ICH volume was calculated by the ABC/2 formula (18). The ICH score was estimated as previously described (19). ICH location was classified as deep (basal ganglia or thalamus), lobar, brain stem, or cerebellar. Midline shift was measured at the level of the septum pellucidum on CT scan. The outcome at discharge was divided into favorable functional recovery with mRS scores 0–3 and unfavorable functional recovery with mRS scores 4–6. Disposition was classified as self-destination (home or acute rehabilitation facility), dependent destination (acute care facility or skilled nursing facility), or death.

Statistical Analysis

Data analyses were performed using SPSS software. Categorical or dichotomous variables were expressed as frequency distribution and percentages. Group comparisons of variables were performed using the chi-square test, Fisher exact test, Student's *t*-test, or Mann-Whitney test as appropriate. Correlation analyses between variables were evaluated using Pearson's correlation coefficient. Multivariate linear regression was performed to assess the independent effect of variables. A *p* value of 0.05 or less was considered significant.

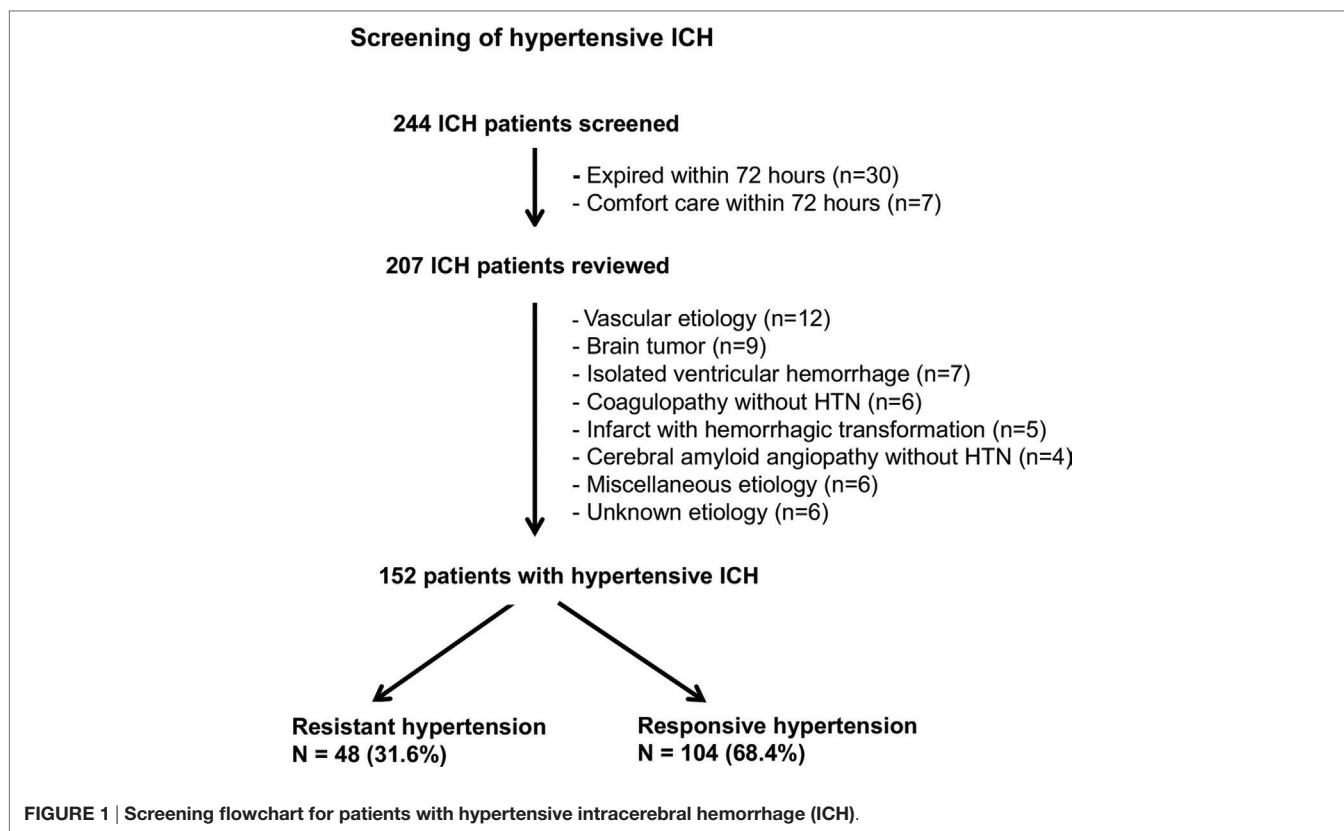
RESULTS

Resistant HTN in Patients with ICH

Of the 244 ICH admissions, 152 patients met the inclusion criteria for hypertensive ICH and 92 patients were excluded due to early death, non-hypertensive causes, or unknown etiology (**Figure 1**). There were 48 patients (31.6%) in the resistant group and 104 (68.4%) in the responsive group.

Clinical Characteristics of Patients with Resistant and Responsive HTN

The baseline characteristics of the two study groups are shown in **Table 1**. The patients with resistant HTN were associated with younger age, obstructive sleep apnea, chronic renal failure, higher initial blood pressures, increased serum creatinine, and proteinuria. There was no significant difference between the two groups in home use of antithrombotic and antihypertensive medications, ICH volume, location, or severity. After adjustment



for age, race, and gender, logistic regression analysis showed that BMI (odds ratio, 1.073; 95% confidence interval, 1.005–1.145; $p = 0.034$) and proteinuria (odds ratio, 3.204; 95% confidence interval, 1.440–7.131; $p = 0.004$) were independently associated with resistant HTN.

Antihypertensive Therapy

Patients with SBP > 140 mm Hg were initially treated with labetalol or hydralazine 10 mg iv *pro re nata* and nicardipine infusion 2.5–15 mg/h. The intravenous medications were then quickly transitioned to oral antihypertensive agents, starting in the ICU. The commonly used oral antihypertensive agents included calcium channel blocker (CCB) amlodipine, angiotensin-converting enzyme inhibitor (ACE-I) lisinopril or benazepril, angiotensin II receptor blocker (ARB) losartan, diuretics hydrochlorothiazide or spironolactone, β -blocker metoprolol, α/β -blocker labetalol or carvedilol, central α agonist clonidine, and vasodilator hydralazine. The oral antihypertensive agents taken by patients at hospital discharge are shown in **Table 2**. Approximately 29.2% (14/48) of patients with resistant HTN needed five or more antihypertensive agents. Patients with resistant HTN were more likely to be taking CCB, ACE-I, α/β blocker, diuretics, vasodilator, and central α -agonist than the responsive group.

Medical Complications, Interventions, and Outcome

As shown in **Table 3**, patients with resistant HTN were more likely to have fever, hyponatremia, and non-respiratory infections

than those with responsive HTN. Despite higher initial blood pressures (**Table 1**) and a higher rate of SBP > 140 mm Hg (37.2 vs 25.2%; $p = 0.001$) (**Table 3**) in the resistant group, there was no significant difference in average increase of the ICH volume at 24 h (3 ± 6.3 vs 4 ± 3.8). There was no difference in pneumonia, seizure activities, or DVT between the two groups.

More patients with resistant HTN required intensive interventions such as ventilator support, hypertonic saline therapy, hematoma evacuation, and nicardipine infusion than the responsive group (**Table 3**).

The resistant group also had significantly longer LOS in the ICU (4.2 vs 2.1 days; $p = 0.007$) and hospital (11.5 vs 7.0 days; $p = 0.003$) than that of the responsive group.

Multivariate linear regression analysis showed that fever (β coefficient = -0.306 ; $t = -3.908$; $p = 0.001$), ventilator support (β coefficient = -0.280 ; $t = -3.840$; $p = 0.001$), and hematoma evacuation (β coefficient = -0.126 ; $t = -2.042$; $p = 0.043$) were associated with longer LOS in the ICU. After risk adjustment for fever, hyponatremia, infections, ICH score, midline shift, ventilator support, and hematoma evacuation, the rate of SBP > 140 mm Hg (β coefficient = 0.267 ; $t = 4.536$; $p = 0.001$) and the duration of nicardipine infusion (β coefficient = 0.418 ; $t = 7.040$; $p = 0.001$) were shown to be independently associated with LOS in the ICU.

There was no significant difference between the two groups in functional outcome (odds ratio, 0.81; 95% confidence interval, 0.40–1.65; $p = 0.559$) and disposition at hospital discharge ($p = 0.825$).

TABLE 1 | Clinical characteristics of ICH patients with resistant or responsive HTN.

| Variables | Resistant group (n = 48) | Responsive group (n = 104) | p Value |
|-------------------------------|--------------------------|----------------------------|---------|
| Age (years) | 58.0 (52.0, 67.8) | 63.0 (51.0, 76.8) | 0.041* |
| Male | 30 (62.5) | 63 (60.6) | 0.821 |
| Race | | | 0.445 |
| Hispanic American | 22 (45.8) | 48 (46.2) | |
| Non-Hispanic American | 12 (25.0) | 29 (27.9) | |
| Asian-American | 9 (18.8) | 23 (22.1) | |
| African-American | 5 (10.4) | 4 (3.8) | |
| Smoking | 7 (14.6) | 16 (15.4) | 0.930 |
| Alcohol use | 8 (16.7) | 15 (14.4) | 0.720 |
| Diabetes | 16 (33.3) | 32 (30.8) | 0.752 |
| Hyperlipidemia | 19 (39.6) | 40 (38.5) | 0.895 |
| Cardiovascular events | 11 (22.9) | 13 (12.5) | 0.102 |
| OSA | 8 (16.7) | 6 (5.8) | 0.039* |
| Chronic renal failure | 13 (27.1) | 10 (9.6) | 0.005* |
| Use of antiplatelet agents | 11 (22.9) | 23 (22.1) | 0.912 |
| Use of anticoagulation agents | 4 (8.3) | 10 (9.6) | 1.000 |
| Use of anti-HTN medications | 25 (52.1) | 44 (42.3) | 0.260 |
| Initial GCS | | | 0.501 |
| 9–15 | 38 (79.2) | 87 (83.7) | |
| 3–8 | 10 (20.8) | 17 (16.3) | |
| Initial SBP (mm Hg) in ED | 201.5 (186.5, 223.8) | 180.0 (157.3, 200.0) | 0.001* |
| Initial DBP (mm Hg) in ED | 99.5 (90.0, 123.0) | 95.0 (79.0, 106.8) | 0.016* |
| BMI (kg/m ²) | 27.8 (24.1, 33.2) | 26.0 (23.0, 29.7) | 0.010* |
| Serum creatinine (mg/dL) | 1.0 (0.7, 1.5) | 0.8 (0.6, 1.0) | 0.008* |
| Proteinuria | 28 (58.3) | 35 (33.7) | 0.004* |
| Initial ICH volume (mL) | 17.4 (5.5, 32.1) | 11.8 (4.7, 21.6) | 0.055 |
| Midline shift (mm) | 0.0 (0.0, 4.9) | 0.0 (0.0, 3.0) | 0.105 |
| ICH location | | | 0.581 |
| Deep | 28 (58.3) | 69 (66.3) | |
| Lobar | 14 (29.2) | 21 (20.3) | |
| Brain stem | 4 (8.3) | 7 (6.7) | |
| Cerebellum | 2(4.2) | 7 (6.7) | |
| ICH score | | | 0.486 |
| 0–2 | 41 (85.4) | 84 (80.8) | |
| 3–5 | 7 (14.6) | 20 (19.2) | |

BMI, body mass index; DBP, diastolic blood pressure; ED, emergency department; GCS, Glasgow coma scale; ICH, intracerebral hemorrhage; IQR, interquartile range; OSA, obstructive sleep apnea; SBP, systolic blood pressure; HTN, hypertension.

Variables are presented as n (%) in nominal data or median (IQR) in continuous data.

*p < 0.05.

TABLE 2 | The use of antihypertensive agents in resistant and responsive groups.

| Antihypertensive agents | Resistant group (n = 48) | Responsive group (n = 104) | p Value |
|-------------------------|--------------------------|----------------------------|---------|
| CCB | 42 (87.5) | 61 (58.7) | 0.001* |
| ACE-I | 40 (83.3) | 68 (65.4) | 0.023* |
| α/β Blocker | 32 (66.7) | 37 (35.6) | 0.001* |
| Diuretics | 23 (47.9) | 11 (10.6) | 0.001* |
| β Blocker | 15 (31.3) | 25 (20.0) | 0.348 |
| Vasodilator | 31 (64.6) | 8 (7.7) | 0.001* |
| Central α-agonist | 13 (27.1) | 6 (5.8) | 0.001* |
| ARB | 8 (16.7) | 11 (10.6) | 0.291 |

CCB, calcium channel blocker; ACE-I, angiotensin-converting enzyme inhibitor; ARB, angiotensin II receptor blocker.

*p < 0.05.

DISCUSSION

In this single-center cohort, resistant HTN was found in 31.6% patients with hypertensive ICH. It was independently associated

with higher BMI and proteinuria. Higher BMI might be a risk factor for resistant HTN, while proteinuria likely reflects end organ damage from chronic HTN. Of note, resistant HTN is seen in only 8–15% of the general hypertensive population (16, 17). There appears to be a higher prevalence of resistant HTN in patients with ICH than in the general hypertensive population. Of note, majority of our ICH patients were Hispanic and Asian. Some of them had never seen a doctor in the past. That may explain the higher prevalence of resistant HTN in our ICH population. There were also significant numbers of patients with lobar or cerebellar hemorrhage in our cohort. Although most of these patients were young and unlikely to have CAA, we cannot rule out the possibility of underlying CAA in some patients.

Medical complications such as fever and infections were reported to increase LOS after ICH (20, 21). In the current study, we demonstrated that patients with resistant HTN had higher rates of medical complications, greater requirement for intensive interventions in the ICU, and longer LOS in the ICU and hospital than patients with responsive HTN. After risk adjustment, the rates of SBP > 140 mm Hg and the duration of

TABLE 3 | Clinical features and outcome of resistant and responsive groups.

| Variables | Resistant group (n = 48) | Responsive group (n = 104) | p Value | OR or AD (95% CI) |
|----------------------------------|--------------------------|----------------------------|---------|---------------------|
| Fever | 20 (41.7) | 24 (23.1) | 0.019* | 2.38 (1.14, 4.96) |
| Hyponatremia | 7 (14.6) | 4 (3.8) | 0.018* | 4.27 (1.19, 15.37) |
| Pneumonia | 10 (20.8) | 12 (11.5) | 0.130 | 2.02 (0.80, 5.07) |
| Other infections | 12 (25.0) | 12 (11.5) | 0.034* | 2.56 (1.05, 6.21) |
| Deep vein thrombosis | 2 (4.2) | 4 (3.8) | 1.000 | 1.09 (0.19, 6.15) |
| Seizure | 2 (4.2) | 6 (5.8) | 1.000 | 0.71 (0.14, 3.65) |
| ICH volume increase at 24 h | 3 (6.3) | 4 (3.8) | 0.679 | 1.67 (0.36, 7.76) |
| External ventricular drainage | 7 (14.6) | 12 (11.5) | 0.598 | 1.31 (0.48, 3.57) |
| Ventilator support | 23 (47.9) | 24 (23.1) | 0.002* | 3.07 (1.48, 6.35) |
| Use of hypertonic saline | 14 (29.2) | 14 (13.5) | 0.020* | 2.65 (1.14, 6.13) |
| Hematoma evacuation | 9 (18.8) | 7 (6.7) | 0.025* | 3.20 (1.11, 9.19) |
| Rate of SBP > 140/SBP < 140 | 37.2 (27.5, 53.5) | 25.2 (15.9, 36.1) | 0.001* | 12.93 (7.97, 17.89) |
| Rate of DBP > 90/DBP < 90 | 2.5 (0.5, 5.3) | 1.6 (0.0, 4.2) | 0.048* | 1.58 (-0.73, 3.89) |
| Duration of nicardipine drip (h) | 81.8 (41.0, 172.9) | 59.0 (32.8, 111.6) | 0.039* | 38.90 (6.52, 71.28) |
| LOS in the ICU (days) | 4.2 (1.9, 9.4) | 2.1 (1.3, 4.7) | 0.007* | 2.30 (0.42, 4.19) |
| LOS in the hospital (days) | 11.5 (6.3, 16.8) | 7.0 (5.0, 11.0) | 0.003* | 3.77 (0.02, 7.52) |
| SBP at discharge (mm Hg) | 134.5 (125.3, 146.0) | 131.0 (119.0, 137.8) | 0.003* | 7.32 (2.45, 12.20) |
| DBP at discharge (mm Hg) | 70.5 (61.3, 79.5) | 69.0 (61.0, 78.5) | 0.567 | 1.13 (-2.76, 5.02) |
| mRS at discharge | | | 0.559 | 0.81 (0.40, 1.65) |
| 0–3 | 17 (35.4) | 42 (40.4) | | |
| 4–6 | 31 (64.6) | 62 (59.6) | | |
| Disposition | | | 0.825 | |
| Self-destination | 22 (45.8) | 53 (51.0) | | |
| Dependent destination | 22 (45.8) | 44 (42.3) | | |
| Death | 4 (8.4) | 7 (6.7) | | |

AD, absolute difference; CI, confidence interval; DBP, diastolic blood pressure; LOS, length of stay; ICH, intracerebral hemorrhage; ICU, intensive care unit; IQR, interquartile range; mRS, modified Rankin scale; OR, odds ratio; SBP, systolic blood pressure.

Variables are presented as n (%) in nominal data or median (IQR) in continuous data.

*p < 0.05.

nicardipine infusion were independently associated with LOS in the ICU. With intensive BP lowering in both groups, there was no significant difference in average increase of the ICH volume at 24 h and functional outcome at hospital discharge.

Our preliminary findings have a number of implications. First, given higher prevalence of resistant HTN in patients with ICH than in the general hypertensive population, resistant HTN may be a significant risk factor for ICH and should be treated aggressively in the outpatient setting.

Second, 68.4% of hypertensive ICH patients had responsive HTN, and approximately 60% of these patients did not require intensive interventions such as EVD, hematoma evacuation, or ventilation support (Table 3). These findings support the view that patients with minor ICH can be safely monitored in the step-down unit (22–24).

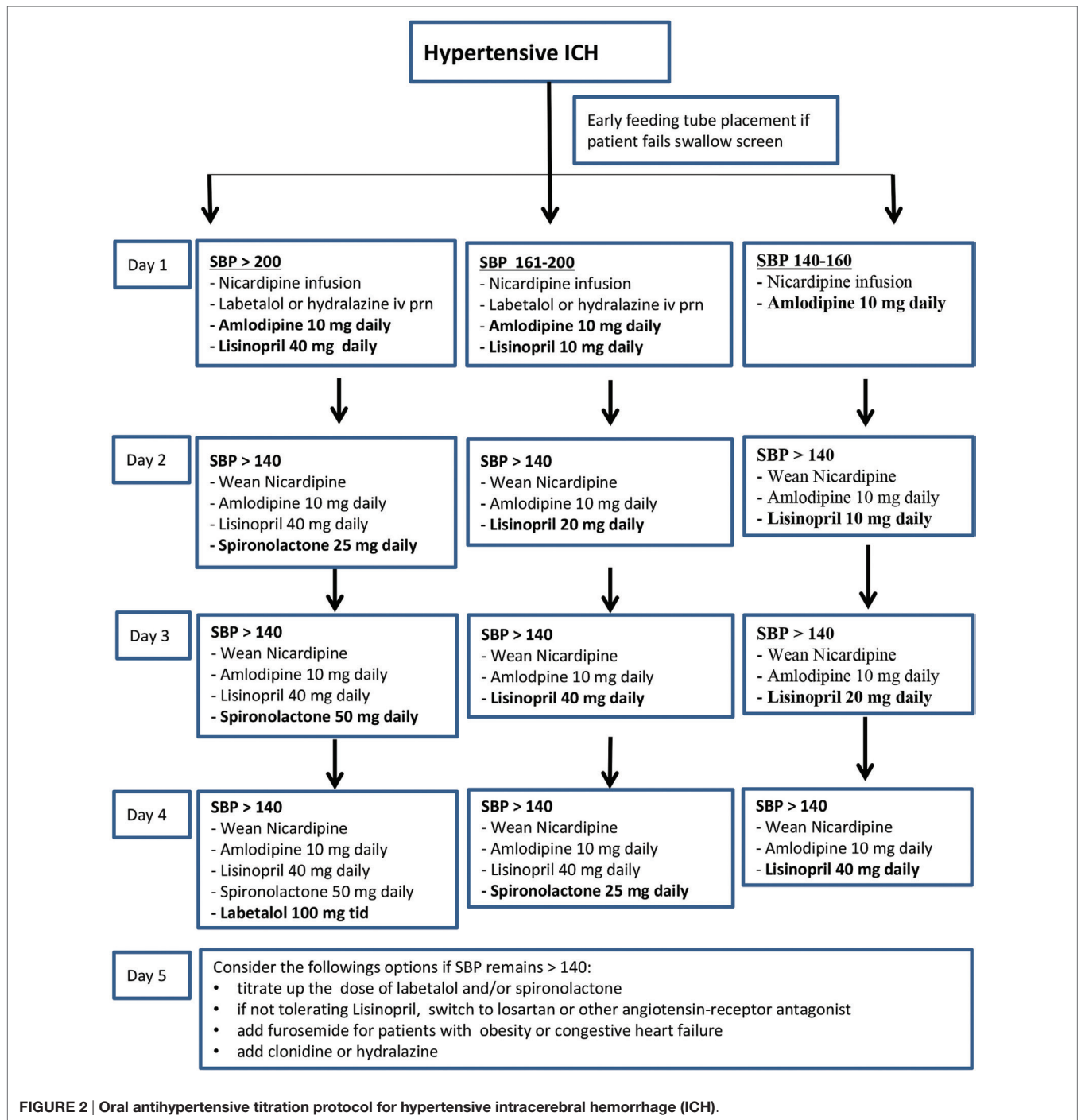
Third, longer LOS in the ICU is associated with significantly higher health-care costs and burdens on patients and their families (25, 26). In view of the lack of outcome benefit from aggressive medical and surgical interventions (11, 12, 27–29), it appears that now it is the time to assess resource utilization in patients with hypertensive ICH. Since higher rates of SBP and prolonged duration of nicardipine infusion were associated with longer LOS in the ICU, early transition from intravenous nicardipine infusion to oral antihypertensive agents in the ICU may potentially reduce LOS and health-care costs.

Finally, little is known about effective management of resistant HTN after ICH. CCB and ACE-I or ARB are widely accepted as first- and second-line drugs for resistant HTN (14).

However, the choice of third- and fourth-line antihypertensive agents varies greatly in the management of hypertensive ICH. Hydrochlorothiazide may not be appropriate for patients with large ICH due to the risk of hyponatremia and worsening perihematoma edema. In a recent randomized trial, spironolactone was shown to be very effective in patients with resistant HTN (30). We have successfully used spironolactone and α/β -blocker labetalol as the third- and fourth-line oral agents to control resistant HTN and to wean off nicardipine infusion promptly. A proposed oral antihypertensive titration protocol is shown in Figure 2.

Our study has limitations. First, it was retrospective in nature, and resistant HTN was defined after ICH in the acute care setting. In the acute phase, patients with ICH may have significantly elevated BP due to a stress response. However, stress-induced reactive HTN usually responds to antihypertensive therapy promptly and is unlikely to require more than three oral agents for BP control. Second, given small sample size, the study is insufficiently powered to show significant outcome differences between resistant and responsive groups. The lack of 90-day outcome data made it impossible to know the long-term impact of resistant HTN on functional recovery. A larger sample size study with 90-day outcome data is needed to address the issue.

In summary, resistant HTN may be more prevalent in patients with ICH than in the general hypertensive population. Our data show that resistant HTN increases intensive interventions and LOS in the ICU without significant impact on short-term functional outcome at hospital discharge.



ETHICS STATEMENT

The study was approved by the Institutional Review Board of the University of California, Irvine.

AUTHOR CONTRIBUTIONS

DH: study design, data acquisition, analysis, interpretation, and drafting the manuscript. DS: acquisition of data and analysis. CD, YA, and LG: data interpretation and critical revision of the

manuscript for important intellectual content. LA-K, JC, and SS: critical revision of the manuscript for important intellectual content. WY: study concept, design, data analysis, interpretation, and manuscript revision.

FUNDING

The research is conducted without any government or industrial funding.

REFERENCES

- Brott T, Thalinger K, Hertzberg V. Hypertension as a risk factor for spontaneous intracerebral hemorrhage. *Stroke* (1986) 17:1078–83. doi:10.1161/01.STR.17.6.1078
- Meretoja A, Strbian D, Putaala J, Curtze S, Haapaniemi E, Mustanoja S, et al. SMASH-U: a proposal for etiologic classification of intracerebral hemorrhage. *Stroke* (2012) 43:2592–7. doi:10.1161/STROKEAHA.112.661603
- Campbell GJ, Roach M. Fenestrations in the internal elastic lamina at bifurcations of human cerebral arteries. *Stroke* (1981) 12:489–96. doi:10.1161/01.STR.12.4.489
- Auer RN, Sutherland GR. Primary intracerebral hemorrhage: pathophysiology. *Can J Neurol Sci* (2005) 32:S3–12.
- Dandapani BK, Suzuki S, Kelley RE, Reyes-Iglesias Y, Duncan RC. Relation between blood pressure and outcome in intracerebral hemorrhage. *Stroke* (1995) 26(1):21–4. doi:10.1161/01.STR.26.1.21
- Kazui S, Minematsu K, Yamamoto H, Sawada T, Yamaguchi T. Predisposing factors to enlargement of spontaneous intracerebral hematoma. *Stroke* (1997) 28(12):2370–5. doi:10.1161/01.STR.28.12.2370
- Kim HC, Nam C, Jee SH, Suh I. Comparison of blood pressure-associated risk of intracerebral hemorrhage and subarachnoid hemorrhage: Korea Medical Insurance Corporation Study. *Hypertension* (2005) 46:393–7. doi:10.1161/01.HYP.0000177118.46049.e6
- Manning L, Hirakawa Y, Arima H, Wang X, Chalmers J, Wang J, et al. Blood pressure variability and outcome after acute intracerebral haemorrhage: a post-hoc analysis of INTERACT2, a randomised controlled trial. *Lancet Neurol* (2014) 13:364–73. doi:10.1016/S1474-4422(14)70018-3
- Tanaka E, Koga M, Kobayashi J, Kario K, Kamiyama K, Furui E, et al. Blood pressure variability on antihypertensive therapy in acute intracerebral hemorrhage: the stroke acute management with urgent risk-factor assessment and improvement-intracerebral hemorrhage study. *Stroke* (2014) 45:2275–9. doi:10.1161/STROKEAHA.114.005420
- Manning LS, Rothwell PM, Potter JF, Robinson TG. Prognostic significance of short-term blood pressure variability in acute stroke: systematic review. *Stroke* (2015) 46:2482–90. doi:10.1161/STROKEAHA.115.010075
- Anderson CS, Heeley E, Huang Y, Wang J, Stapf C, Delcourt C, et al. Rapid blood-pressure lowering in patients with acute intracerebral hemorrhage. *N Engl J Med* (2013) 368:2355–65. doi:10.1056/NEJMoa1214609
- Qureshi AI, Palesch YY, Barsan WG, Hanley DF, Hsu CY, Martin RL, et al. Intensive blood-pressure lowering in patients with acute cerebral hemorrhage. *N Engl J Med* (2016) 375(11):1033–43. doi:10.1056/NEJMoa1603460
- Hemphill JC, Greenberg SM, Anderson CS, Becker K, Bendok BR, Cushman M, et al. Guidelines for the management of spontaneous intracerebral hemorrhage: a guideline for healthcare professionals from the American Heart Association/American Stroke Association. *Stroke* (2015) 46:2032–60. doi:10.1161/STR.0000000000000069
- Mohrien KM, Eljovich L, Venable GT, Taylor DR, Jones GM. Intensive blood pressure control during the hyperacute phase of intracerebral hemorrhage in patients at risk for resistant hypertension: a retrospective cohort study. *J Crit Care* (2015) 30:369–74. doi:10.1016/j.jcrc.2014.10.012
- Calhoun DA, Jones D, Textor S, Goff DC, Murphy TP, Toto RD, et al. Resistant hypertension: diagnosis, evaluation, and treatment: a scientific statement from the American Heart Association Professional Education Committee of the Council for High Blood Pressure Research. *Hypertension* (2008) 51:1403–19. doi:10.1161/HYPERTENSIONAHA.108.189141
- Sarafidis PA, Georgianos P, Bakris GL. Resistant hypertension – its identification and epidemiology. *Nat Rev Nephrol* (2013) 9:51–8. doi:10.1038/nrneph.2012.260
- Sim JJ, Bhandari SK, Shi J, Liu IL, Calhoun DA, McGlynn EA, et al. Characteristics of resistant hypertension in a large, ethnically diverse hypertension population of an integrated health system. *Mayo Clin Proc* (2013) 88:1099–107. doi:10.1016/j.mayocp.2013.06.017
- Kothari RU, Brott T, Broderick JP, Barsan WG, Sauerbeck LR, Zuccarello M, et al. The ABCs of measuring intracerebral hemorrhage volumes. *Stroke* (1996) 27:1304–5. doi:10.1161/01.STR.27.8.1304
- Hemphill JC III, Bonovich DC, Besmertis L, Manley GT, Johnston SC. The ICH score: a simple, reliable grading scale for intracerebral hemorrhage. *Stroke* (2001) 32:891–7. doi:10.1161/01.STR.32.4.891
- Ohwaki K, Yano E, Nagashima H, Nakagomi T, Tamura A. Impact of infection on length of intensive care unit stay after intracerebral hemorrhage. *Neurocrit Care* (2008) 8:271–5. doi:10.1007/s12028-007-9007-1
- Naidech AM, Bendok BR, Tamul P, Bassin SL, Watts CM, Batjer HH, et al. Medical complications drive length of stay after brain hemorrhage: a cohort study. *Neurocrit Care* (2009) 10:11–9. doi:10.1007/s12028-008-9148-x
- Nguyen C, Mir O, Vahidy F, Wu TC, Albright K, Boehme A, et al. Resource utilization for patients with intracerebral hemorrhage transferred to a comprehensive stroke center. *J Stroke Cerebrovasc Dis* (2015) 24:2866–74. doi:10.1016/j.jstrokecerebrovasdis.2015.08.023
- Hafez S, Behrouz R. The safety and feasibility of admitting patients with intracerebral hemorrhage to the step-down unit. *J Intensive Care Med* (2016) 31:409–11. doi:10.1177/0885066615578113
- Fletcher JJ, Kotagal V, Mammoser A, Peterson M, Morgenstern LB, Burke JF. Cost-effectiveness of transfers to centers with neurological intensive care units after intracerebral hemorrhage. *Stroke* (2015) 46:58–64. doi:10.1161/STROKEAHA.114.006653
- Johnston SC, Mendis S, Mathers CD. Global variation in stroke burden and mortality: estimates from monitoring, surveillance, and modeling. *Lancet Neurol* (2009) 8:345–54. doi:10.1016/S1474-4422(09)70023-7
- Stepanova M, Venkatesan C, Altaweel L, Mishra A, Younossi ZM. Recent trends in inpatient mortality and resource utilization for patients with stroke in the United States: 2005–2009. *J Stroke Cerebrovasc Dis* (2013) 22:491–9. doi:10.1016/j.jstrokecerebrovasdis.2013.03.005
- Mayer SA, Brun NC, Begtrup K, Broderick J, Davis S, Diringer MN, et al. Efficacy and safety of recombinant activated factor VII for acute intracerebral hemorrhage. *N Engl J Med* (2008) 358:2127–37. doi:10.1056/NEJMoa0707534
- Mendelow AD, Gregson BA, Fernandes HM, Murray GD, Teasdale GM, Hope DT, et al. Early surgery versus initial conservative treatment in patients with spontaneous supratentorial intracerebral hematomas in the International Surgical Trial in Intracerebral Haemorrhage (STICH): a randomised trial. *Lancet* (2005) 365:387–97. doi:10.1016/S0140-6736(05)70233-6
- Mendelow AD, Gregson BA, Rowan EN, Murray GD, Gholkar A, Mitchell PM, et al. Early surgery versus initial conservative treatment in patients with spontaneous supratentorial lobar intracerebral haematomas (STICH II): a randomised trial. *Lancet* (2013) 382:397–408. doi:10.1016/S0140-6736(13)60986-1
- Williams B, MacDonald TM, Morant S, Webb DJ, Sever P, McInnes G, et al. Spironolactone versus placebo, bisoprolol, and doxazosin to determine the optimal treatment for drug-resistant hypertension (PATHWAY-2): a randomized, double-blind, crossover trial. *Lancet* (2015) 386:2059–68. doi:10.1016/S0140-6736(15)00257-3

Conflict of Interest Statement: The research was conducted in the absence of any commercial or financial relationships that could be construed as a potential conflict of interest. SS serves as editor-in-chief of the international journal *Brain and Language* and receives compensation from Elsevier Publishing for this service. He is also the recipient of funding from the National Institutes of Health under grants R13 DC011445, P01 HD040605, and P50 MH096889. WY serves as editorial board member for *Frontier in Stroke*, *Stroke and Vascular Neurology* and is scientific consultant for Stryker Neurovascular. Other coauthors report no disclosures.

Copyright © 2017 Hong, Stradling, Dastur, Akbari, Groysman, Al-Khoury, Chen, Small and Yu. This is an open-access article distributed under the terms of the Creative Commons Attribution License (CC BY). The use, distribution or reproduction in other forums is permitted, provided the original author(s) or licensor are credited and that the original publication in this journal is cited, in accordance with accepted academic practice. No use, distribution or reproduction is permitted which does not comply with these terms.