

UCLA

UCLA Previously Published Works

Title

Néel-type skyrmion in WTe_2/Fe_3GeTe_2 van der Waals heterostructure.

Permalink

<https://escholarship.org/uc/item/0b9845nk>

Journal

Nature communications, 11(1)

ISSN

2041-1723

Authors

Wu, Yingying
Zhang, Senfu
Zhang, Junwei
et al.

Publication Date

2020-07-01

DOI

10.1038/s41467-020-17566-x

Peer reviewed

Néel-type skyrmion in WTe_2/Fe_3GeTe_2 van der Waals heterostructure

Yingying Wu^{1,9}, Senfu Zhang^{2,9}, Junwei Zhang², Wei Wang³, Yang Lin Zhu⁴, Jin Hu⁵, Gen Yin¹, Kin Wong¹, Chi Fang⁶, Caihua Wan⁶, Xiufeng Han⁶, Qiming Shao¹, Takashi Taniguchi⁷, Kenji Watanabe⁷, Jiadong Zang⁸, Zhiqiang Mao⁴, Xixiang Zhang² & Kang L. Wang¹✉

The promise of high-density and low-energy-consumption devices motivates the search for layered structures that stabilize chiral spin textures such as topologically protected skyrmions. At the same time, recently discovered long-range intrinsic magnetic orders in the two-dimensional van der Waals materials provide a new platform for the discovery of novel physics and effects. Here we demonstrate the Dzyaloshinskii-Moriya interaction and Néel-type skyrmions are induced at the WTe_2/Fe_3GeTe_2 interface. Transport measurements show the topological Hall effect in this heterostructure for temperatures below 100 K. Furthermore, Lorentz transmission electron microscopy is used to directly image Néel-type skyrmion lattice and the stripe-like magnetic domain structures as well. The interfacial coupling induced Dzyaloshinskii-Moriya interaction is estimated to have a large energy of 1.0 mJ m^{-2} . This work paves a path towards the skyrmionic devices based on van der Waals layered heterostructures.

¹Department of Electrical and Computer Engineering, University of California—Los Angeles, Los Angeles, CA 90095, USA. ²Physical Science and Engineering Division, King Abdullah University of Science and Technology, Thuwal 23955-6900, Saudi Arabia. ³Key Laboratory of Flexible Electronics & Institute of Advanced Materials, Jiangsu National Synergetic Innovation Center for Advanced Materials, Nanjing Tech University, Nanjing 211816, China. ⁴Department of Physics, Pennsylvania State University, University Park, PA 16802, USA. ⁵Department of Physics, University of Arkansas, Fayetteville, AR 72701, USA. ⁶Institute of Physics, Chinese Academy of Sciences, Beijing 100190, China. ⁷National Institute for Materials Science, 1-1 Namiki, Tsukuba 305-0044, Japan. ⁸Department of Physics and Astronomy, University of New Hampshire, Durham, NH 03824, USA. ⁹These authors contributed equally: Yingying Wu, Senfu Zhang. ✉email: wang@ee.ucla.edu

Atomically thin, layered van der Waals (vdW) materials have been experimentally shown to host long-range magnetic orders recently^{1,2}, which could push the magnetic memory and information storage to the atomically thin limit and lead to ultra-compact next-generation spintronics^{3,4}. Since the discovery of the ferromagnetism in $\text{Cr}_2\text{Ge}_2\text{Te}_6$ ^{5,6}, CrI_3 ^{7–10}, and Fe_3GeTe_2 (FGT)^{11–14}, such layered crystals have been at the frontier of material research. Besides the material itself, interfacial engineering in vdW heterostructures offers an effective methodology to spin-polarize or valley-polarize two-dimensional (2D) materials. Proximity effect from the interface has been widely researched for spin or valley polarization in 2D materials, like graphene on transition metal dichalcogenides^{15–19} and WSe_2 on CrI_3 ^{20–23}. Coupling 2D magnets to vdW materials not only lends the magnetic properties of these 2D magnets to the adjacent materials, but also modifies the magnetic properties of the 2D magnets themselves²⁴. Among all the possible interfacial coupling for 2D magnets, spin orbit coupling proximity can play an important role when the atoms of 2D magnets are in contact of heavy elements, considering that the magnetic properties are intrinsically related to the spin orbit coupling.

Rashba spin-orbit coupling is known to lead to a strong Dzyaloshinskii–Moriya interaction (DMI) at the interface^{24,25}, where the broken inversion symmetry at the interface can change

the magnetic states. DMI has been recognized as a key ingredient in the creation, stabilization, and manipulation of skyrmions and chiral domain walls. Whereas skyrmions from DMI become significant in the heavy metals/ferromagnet systems^{26–28}, there have been no direct observations of skyrmions in vdW heterostructures, even though the topological Hall effect has been reported in Cr-doped topological insulator (TI)/TI²⁹ and Mn-doped TI systems³⁰.

In this work, we have observed the topological Hall effect in WTe_2 /FGT vdW heterostructures from transport measurements. More importantly, a large DMI energy of 1.0 mJ m^{-2} has been determined in this system and the formation of Néel-type skyrmions has been captured with Lorentz transmission electron microscopy (L-TEM). The sizes of the directly observed skyrmions are $\sim 150 \text{ nm}$ at 94 K and $\sim 80 \text{ nm}$ at 198 K . This work helps promote 2D materials for ultra-compact spintronic devices.

Results

Thickness characterization of WTe_2 and FGT. Before we show the proximity effect of the heterostructures, we first determine the properties of WTe_2 and FGT separately. The $1T'$ crystal structure of WTe_2 (Fig. 1a) has been confirmed in the previous work³¹. Atomic force microscopy was adopted to measure the thickness

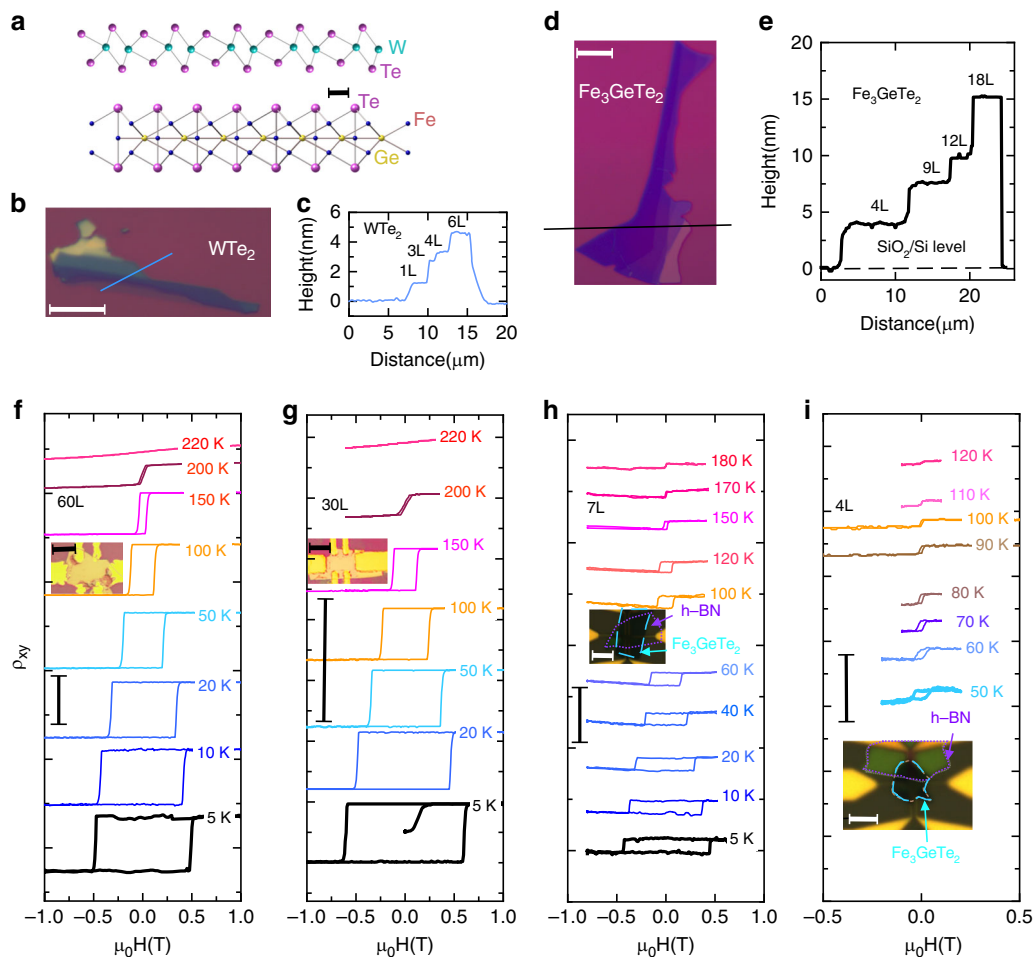


Fig. 1 Thickness characterization and layer-dependent transport properties. **a** Schematic graph for WTe_2 on Fe_3GeTe_2 . Scale bar: 2 \AA . **b** Microscopic image of exfoliated WTe_2 flakes. Scale bar: $10 \mu\text{m}$. **c** Cross-sectional profile of the WTe_2 flakes along the blue line shown in **(b)**. **d** Microscopic image of exfoliated Fe_3GeTe_2 thin films. Scale bar: $10 \mu\text{m}$. **e** Cross-sectional profile of the Fe_3GeTe_2 flakes along the black line shown in **(d)**. Temperature dependence of Hall resistivity for **f** 60L, **g** 30L, **h** 7L, and **i** 4L Fe_3GeTe_2 flakes showing that the Curie temperature decreases as the thickness of Fe_3GeTe_2 decreases. Insets show the devices for the measurements separately and the scale bar in the inset: $10 \mu\text{m}$. Resistivity is shifted for clarity. The vertical scale bars are 10Ω for **(f-h)** and 100Ω for **(i)**.

of this material as shown in Fig. 1b, c. It shows that the single-layer (1L) WTe_2 on the SiO_2/Si substrate has a height of about 1.1 nm. The transport data of 1L WTe_2 are given in Supplementary Note 1, Supplementary Fig. 1. Bulk FGT consists of weakly bonded Fe_3Ge layers that alternate with two Te layers with a space group $\text{P6}_3\text{mmc}$ as shown in Fig. 1a (bottom). For FGT, the 1L thickness is 0.8 nm¹¹. This thickness is used to determine the number of layers for FGT as shown in Fig. 1d, e. As shown in Fig. 1f–i, the Curie temperature decreases from ~ 200 to ~ 100 K when the thickness of FGT goes down from 60L to 4L. The perpendicular magnetic anisotropy is well preserved for FGT with thickness down to seven layers. For the thin FGT samples with seven layers and four layers, hexagonal boron nitride (h-BN) thin flakes are used for protection from effects of the ambient conditions.

Topological Hall effect in WTe_2/FGT heterostructure. WTe_2 has one of the largest spin–orbit coupling among the transition metal dichalcogenides³². At the interface, the terminated atoms in WTe_2 are the same as those in FGT: two layers of heavy Te atoms are coupled through the 5p orbital, where the strong spin–orbit interaction from WTe_2 could play a significant role in reorganizing the spin polarizations in FGT. Such effect can be captured by transport measurements in thin films, and the transport data of h-BN/ WTe_2 /FGT heterostructures are shown in Fig. 2 with h-BN serves as the protection layer (Supplementary Note 2). For the h-BN/1L WTe_2 /4L FGT sample (sample A) as shown in Fig. 2a, b, the longitudinal resistivity increases when temperature goes down from room temperature (Supplementary Note 3, Supplementary Fig. 2). The Curie temperature for this device is below 150 K, which is close to that of a 4L FGT on SiO_2/Si sample. Topological Hall is a spin-chirality-driven Hall effect, i.e., the spin chirality induces a finite contribution to the Hall response. In our case, dips and peaks near the magnetic phase transition edge, which signal the presence of the topological Hall effect, show up below 100 K as shown in Fig. 2c. For example, at 50 K there is a dip or peak at a field strength $\sim \pm 975$ Oe as indicated by the dashed lines (Supplementary Note 4, Supplementary Figs. 3 and 4). Different from this sample where the interfacial coupling has been reflected through the topological Hall effect, a 2L WTe_2 /30L FGT heterostructure (sample B) shows the perpendicular magnetic anisotropy is well preserved in FGT when the temperature is below 180 K in the Fig. 2e, indicated by the square loop of the Hall resistivity. However, within an intermediate temperature range (180–200 K), the hysteresis loops differ in having transitions in steps. For example, at 190 K, the Hall resistivity suddenly jumps from the low saturation value to an intermediate level and then changes linearly. Finally, it saturates to the high saturation value at a relatively high positive field. The reversed trace does the opposite as expected. A possible explanation for this behavior is the formation of labyrinthine domain structures in FGT which results in multi domains¹², and this will be confirmed later. Compared to the sample A as shown in Fig. 2a–c, the sample B as shown in Fig. 2d, e with a much thicker FGT flakes measures the averaged transport signal which may lead to the smearing out of the topological Hall signal at the interface, which will be discussed later. In the following part, we utilize L-TEM to directly investigate the domain structures in 2L WTe_2 /40L FGT and 2L WTe_2 /30L FGT heterostructures, the latter of which is similar to sample B and we also confirm a large DMI at the interface.

Experimental observation of Néel-type skyrmions with L-TEM.

Lorentz microscopy allows us to obtain direct magnetic domain structural images of thin magnetic films based on the fact that electrons experience a Lorentz force when traveling in a magnetic

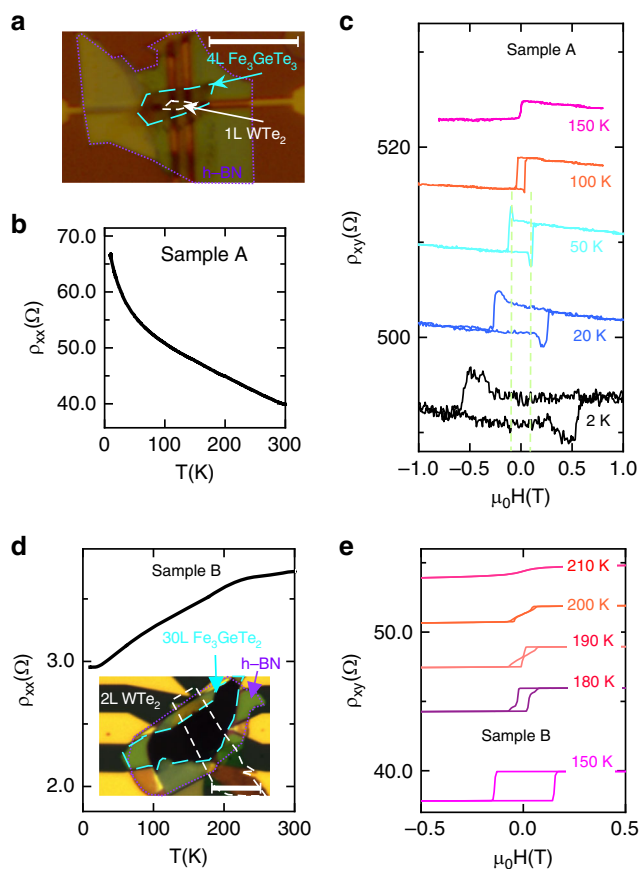


Fig. 2 Transport properties of $\text{WTe}_2/\text{Fe}_3\text{GeTe}_2$ heterostructures.

a Microscopic image of sample A (1L WTe_2 /4L Fe_3GeTe_2). Scale bar: 10 μm . **b** Increasing longitudinal resistivity when temperature goes down for sample A. **c** Hall resistivity of the heterostructure shown in (a). Hall resistivity shows a peak and dip near the transition edge before the magnetization saturates, which is a sign of the topological Hall effect. An offset is used for clarity. **d** Longitudinal resistivity dependence on the temperature, showing the metallic behavior when temperature decreases. Inset shows the microscopic image of sample B (2L WTe_2 /30L Fe_3GeTe_2). Scale bar: 10 μm . **e** Hall resistivity of the heterostructure shown in (d). An offset is used for clarity. Magnetic field is along out-of-plane direction.

field. Compared to other techniques³³, L-TEM, as one of the most direct methods to observe magnetic domain structures, domain walls and skyrmions, affords the advantage of a spatial resolution below 5 nm. The contrast formed in L-TEM is traditionally explained from the deflection of electrons due to the Lorentz force. For the Néel-type skyrmions, no contrast could be observed in the L-TEM image if the sample is not tilted because the intensity change caused by the Lorentz force at any point in the Néel-type skyrmion is compensated or canceled. After tilting the sample, dark-bright contrast could be formed in the L-TEM image³⁴ due to the contributions from both the outside and the core of the Néel-type skyrmion as schematically shown in Fig. 3a. The skyrmion lattice was observed in a 2L WTe_2 /40L FGT heterostructure at 180 K for the rotating angle $\alpha = 30^\circ$ (Fig. 3b) in de-focused and focused images. From under focus to over focus, the skyrmions transform from white on the top and dark in the bottom to the opposite contrasts. These are consistent with the Néel-type nature of the skyrmions (Supplementary Note 5, Supplementary Fig. 5). One hexagonal skyrmion lattice is indicated with the dashed lines. The field dependence of a single skyrmion in the WTe_2 /30L FGT (similar to sample B for the transport

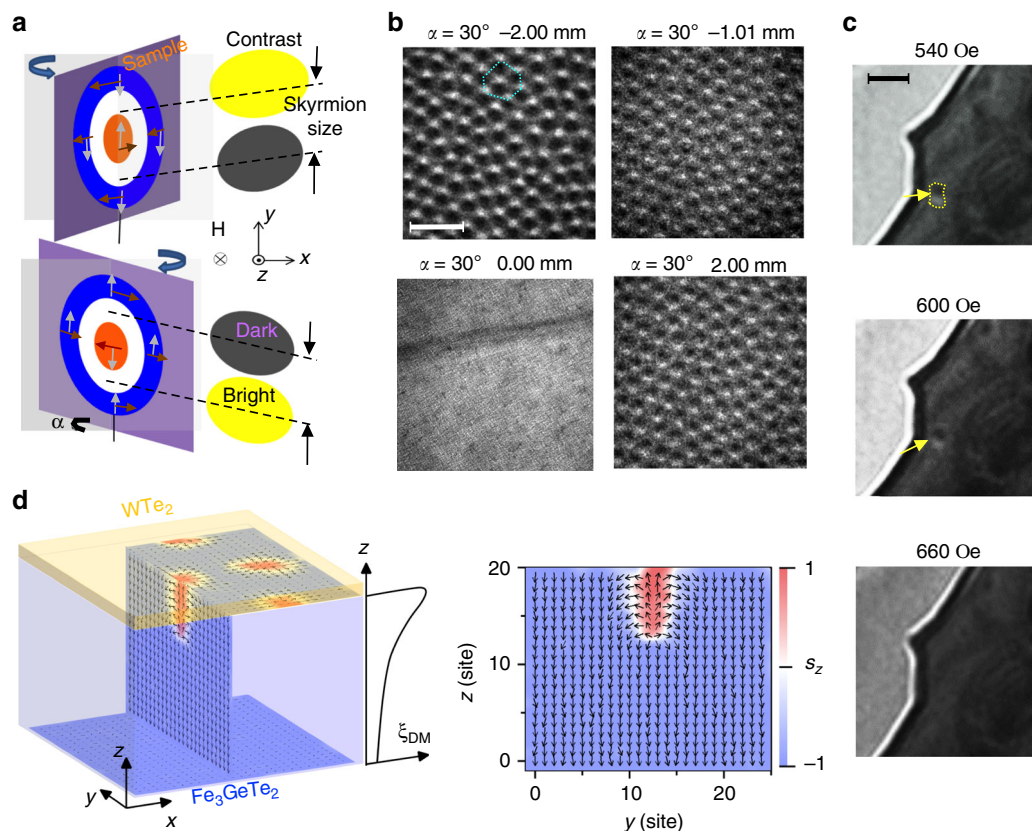


Fig. 3 Néel-type skyrmions observed by Lorentz transmission electron microscopy. **a** Schematic diagram of a Néel-type skyrmion on a tilt sample for Lorentz transmission electron microscopy imaging. The orange and blue circles are for positive and negative magnetizations along z direction, respectively. Brown arrows indicate the in-plane magnetization component while gray arrows indicate the Lorentz force. **b** Lorentz transmission electron microscopy observation of skyrmion lattice from under focus to over focus on $\text{WTe}_2/40\text{L Fe}_3\text{GeTe}_2$ samples at 180 K with a field of 510 Oe. Scale bar: 500 nm. **c** Lorentz transmission electron microscopy observation of a Néel-type skyrmion at $T = 94\text{ K}$, $\alpha = 21.86^\circ$ and $H = 540, 600\text{ Oe}$, where α is the angle between the sample plane and xy plane. The yellow arrow points to a skyrmion. The skyrmion size is $\sim 150\text{ nm}$. Scale bar: 500 nm. **d** Simulation results considering a finite depth of interfacial Dzyaloshinskii-Moriya interaction in Fe_3GeTe_2 .

measurements) is shown in Fig. 3c when a field changes from 540 to 660 Oe at 94 K. The Néel-type skyrmion is well developed at a field of 540 and 600 Oe along the z direction, having dark on the top side and bright in the bottom. The size is estimated to be $\sim 150\text{ nm}$ (more information about the skyrmion size of $\sim 150\text{ nm}$ at 100 K and $\sim 80\text{ nm}$ at 197 K can be found in Supplementary Note 6, Supplementary Fig. 6). However, we failed to resolve any domain structure in 1L $\text{WTe}_2/4\text{L FGT}$ samples (similar to sample A) using L-TEM. This may be due to the small sheet magnetization in the thin film, which requires higher beam exposure to resolve; however, this already exceeds the tolerance of our samples, beyond which, unrecoverable damages occur. L-TEM measurements of WTe_2/FGT heterostructures with varied FGT thicknesses suggest the DMI only penetrates to a finite depth of FGT (Supplementary Note 7, Supplementary Fig. 7). To further understand how this interfacial DMI penetrates through the FGT layers, we have carried out simulations as shown in Fig. 3d. For FGT away from the interface, it enters the ferromagnetic phase as shown in the vertical profile in the yz plane.

Experimental evidence of WTe_2 induced DMI. The strong perpendicular magnetic anisotropy favors out-of-plane magnetization, which makes the spin polarization in the FGT form the domain in the up or down directions. Figure 4b shows the magnetic domain images for the 30L FGT thin flake without WTe_2 (see Fig. 4a). The film exhibits labyrinth domains at 94 K and 0 Oe. When the in-plane field is tuned to the opposite

direction, the contrast of domain edge completely switches the sign as shown in the cases of a tilt angle of $\alpha = -20^\circ$ and $\alpha = 21^\circ$.

The formation and structure of domain walls are usually a result of the interplay between exchange interaction, magnetic anisotropy and dipolar interaction. Reducing the thickness of the FGT flakes decreases the dipolar interaction, thus, perpendicular magnetic anisotropy leads to a stabilized single domain¹⁴. Meanwhile, the exchange interaction term here includes DMI, which is a noncollinear exchange interaction that favors a chirally rotating magnetic structure of a specific rotational direction. By comparing the WTe_2/FGT and the nearby FGT regions, the magnetic domain difference shows the interfacial coupling contributes to a strong DMI.

For the WTe_2/FGT heterostructure, there is no contrast when $\alpha = 0^\circ$ as shown in Fig. 4c, which is an evidence for the Néel-type domains. When $\alpha \neq 0^\circ$, we have observed this well aligned and stripe-like domains with a domain width $w = 290\text{ nm}$ at 0 T, which is sharply different from the domain structure of the FGT flake shown in Fig. 4b, having a much smaller domain width. In this case, the DMI is largely enhanced²⁸ for this heterostructure from the interfacial Te atoms coupling. A phenomenological model defines the dependence of the domain width w on the domain wall energy δ_w by³⁵

$$w = \beta \frac{4\pi\delta_w}{M_s^2}, \quad (1)$$

here the domain wall energy δ_w is related to exchange stiffness A , effective anisotropy constant K_{eff} , and DMI constant $|D|$ by

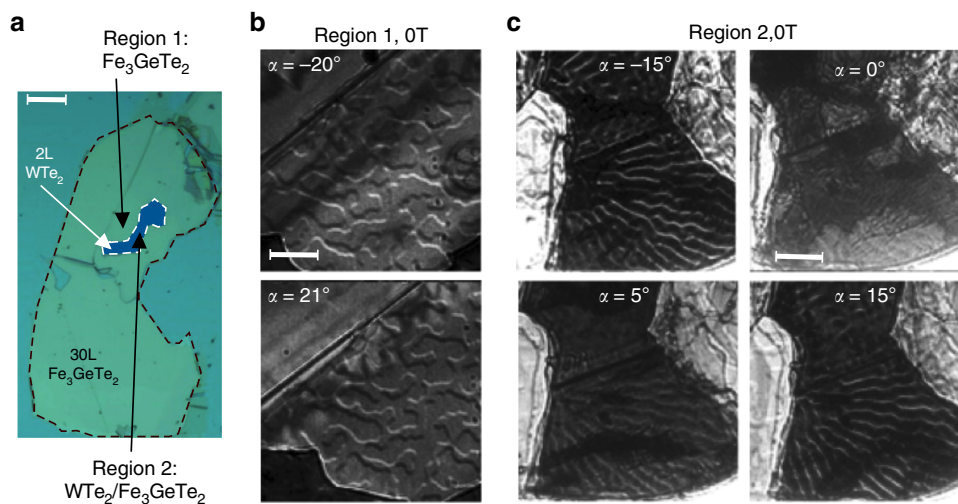


Fig. 4 Magnetic domain difference of Fe_3GeTe_2 with and without WTe_2 . **a** Sample for Lorentz transmission electron microscopy measurements consisting of 2L WTe_2 and 30L Fe_3GeTe_2 . Scale bar: 10 μm . **b** Typical labyrinth domain in 30L Fe_3GeTe_2 thin flakes. Scale bar: 2 μm . **c** From the aligned and stripe-like domain structures of the $\text{WTe}_2/\text{Fe}_3\text{GeTe}_2$, a Dzyaloshinskii–Moriya interaction energy is estimated to be -1.0 mJ m^{-2} . Scale bar: 2 μm .

$\delta_w = 4\sqrt{AK_{\text{eff}}} - \pi|D|$ ³⁶. β is a phenomenological fitting parameter and taken to be 0.31 for FGT³⁵. A domain width of 290 nm leads to a domain wall energy $\delta_w = 0.77 \text{ mJ m}^{-2}$ including the DMI term (Supplementary Note 8, Supplementary Fig. 8). In the case of pristine FGT without considering DMI, the domain wall energy is simply expressed as $4\sqrt{AK_{\text{eff}}}$. Then by comparing these two domain wall energies with and without the DMI contribution, we obtain a DMI energy $|D| = 1.0 \text{ mJ m}^{-2}$ in our system, which is comparable to the previous value in heavy metal/ferromagnet thin film systems²⁷ (Supplementary Note 9, Supplementary Fig. 9). One can compare $|D|$ to the critical value $|D_c|$, which is required to stabilize chiral Néel domain wall^{27,37}

$$|D_c| = \frac{4}{\pi} \sqrt{\frac{A}{K_{\text{eff}}}} K_d, \quad (2)$$

where when the magnetostatic or stray field energy constant $K_d = 2\pi M_s^2$ is large, the critical value for the Néel type domain is larger. Thus, $|D_c|$ is estimated to be $\sim 0.1 \text{ mJ m}^{-2}$, so that $|D| > |D_c|$ and chiral Néel textures are expected. Compared to the transport measurements which take the averaged transport signal of the few nanometers of FGT coupled to the WTe_2 near the interface, and other FGT layers away from the interface, L-TEM helps confirm the DMI from the Néel-type skyrmion captured at the WTe_2/FGT interface since the uncoupled FGT layers in a single uniform domain contribute no contrast (Supplementary Note 10, Supplementary Figs. 10 and 11).

Discussion

To bridge the gap of different thicknesses between the transport and the L-TEM studies, here we show two results suggest good consistency. On one hand, both skyrmion sizes obtained from the topological Hall effect and the L-TEM images give the same order of magnitude (Supplementary Note 11, Supplementary Fig. 12). On the other hand, the WTe_2 capping can only impact the domain structure for the FGT thickness less than 65L, suggesting a finite vertical penetration depth of the DMI. Assuming an exponential decay in the DMI profile, our simulation suggests that the skyrmions can only exist near the interface, where a large volume of the ferromagnetic phase shows up away from the interface (Supplementary Note 12, Supplementary Fig. 13). Due to frequent scatterings, when carriers are passing through the ferromagnetic phase,

they may quickly lose the memory of the transverse velocity due to the topological Hall effect, and therefore the anomalous Hall effect dominates. A quantitative analysis for the missing of the topological Hall effect in the thicker films is as following. Due to the large carrier density in thicker FGT films, it is expected to have a very small topological Hall signal. As an example, we estimate the topological Hall resistivity to be smaller than 0.01Ω in $\text{WTe}_2/30\text{L}$ FGT samples, which is more than two orders of magnitude smaller than the anomalous Hall resistivity. This may explain the missing topological Hall resistivity ρ_{xy}^T humps in thicker films.

In summary, we reported the observed Néel-type skyrmions from L-TEM and the discovery of topological Hall effect in the WTe_2/FGT heterostructure. A large DMI energy of $\sim 1.0 \text{ mJ m}^{-2}$ from the interfacial coupling may be a result of the broken inversion symmetry from Rashba spin-orbit coupling. We have shown Néel-type skyrmions of a small size ($\sim 150 \text{ nm}$ at 94 K and $\sim 80 \text{ nm}$ at 198 K) at the interface of the vdW heterostructure. Further researches can include electrically gating to control skyrmions in 2D vdW heterostructures, and this may open a new area in the field of ultra-compact next-generation spintronics.

Methods

Sample assembly using a pick-up transfer technique. In preparation, we coated the polydimethylsiloxane (PDMS) stamp on a glass slide with a polypropylene carbonate (PPC). During the assembly of heterostructure, we first exfoliated h-BN onto the 300-nm-thick SiO_2/Si substrate. Then the PDMS/PPC on the glass slide was used to pick up the h-BN from the SiO_2/Si substrate by heating up to around 40°C . After that, we aligned the PDMS/PPC/h-BN and the exfoliated WTe_2 on the 300-nm-thick SiO_2/Si substrate, and used the similar heating temperature to pick up WTe_2 . Then we used PDMS/PPC/h-BN/ WTe_2 to pick up FGT. By heating the samples up to 110°C , PPC was released from the PDMS and the PPC/h-BN/ WTe_2/FGT was transferred onto the prepared bottom electrodes. Then acetone was used to remove the PPC thin film. Another way to assemble the samples is using the pick-up transfer method to form the PDMS/PPC/ WTe_2/FGT layers first. After transferring the layers onto the bottom electrodes, the h-BN layers were used to cover WTe_2/FGT later, as shown in Supplementary Note 2. In both cases, the WTe_2/FGT interface is well preserved. The metal contacts used for the transport measurements of FGT thin flakes have two types, one is evaporation of Cr/Au electrodes after exfoliation of FGT onto the SiO_2/Si substrates and the other one is using the pick-up transfer technique to accurately align FGT with the prepared bottom Cr/Au electrodes. The length and width of contacts in a Hall bar geometry as shown in Fig. 1f–i for 60L FGT, 30L FGT, h-BN/7L FGT, h-BN/4L FGT are $15 \mu\text{m} \times 9 \mu\text{m}$, $15 \mu\text{m} \times 9 \mu\text{m}$, $3.5 \mu\text{m} \times 0.5 \mu\text{m}$, and $3.5 \mu\text{m} \times 0.5 \mu\text{m}$, respectively.

L-TEM measurements. The in situ L-TEM imaging was carried out by using a FEI Titan Cs Image TEM in Lorentz mode (the Fresnel imaging mode) at 300 kV.

Data availability

The data that support the findings of this study are available in figshare with the identifier [<https://doi.org/10.6084/m9.figshare.12520796>].

Received: 14 February 2020; Accepted: 5 July 2020;

Published online: 31 July 2020

References

- Gong, C. et al. Discovery of intrinsic ferromagnetism in two-dimensional van der Waals crystals. *Nature* **546**, 265 (2017).
- Huang, B. et al. Layer-dependent ferromagnetism in a van der Waals crystal down to the monolayer limit. *Nature* **546**, 270 (2017).
- Klein, D. R. et al. Probing magnetism in 2D van der Waals crystalline insulators via electron tunneling. *Science* **360**, 1218–1222 (2018).
- Song, T. et al. Giant tunneling magnetoresistance in spin-filter van der Waals heterostructures. *Science* **360**, 1214–1218 (2018).
- Siberchicot, B., Jobic, S., Carreau, V., Gressier, P. & Ouvrard, G. Band structure calculations of ferromagnetic chromium tellurides CrSiTe₃ and CrGeTe₃. *J. Phys. Chem.* **100**, 5863–5867 (1996).
- Carreau, V., Brunet, D., Ouvrard, G. & Andre, G. Crystallographic, magnetic and electronic structures of a new layered ferromagnetic compound Cr₂Ge₂Te₆. *J. Phys.* **7**, 69 (1995).
- Jang, S. W., Jeong, M. Y., Yoon, H., Ryee, S. & Han, M. J. Microscopic understanding of magnetic interactions in bilayer CrI₃. *Phys. Rev. Mater.* **3**, 031001 (2019).
- Jiang, S., Li, L., Wang, Z., Mak, K. F. & Shan, J. Controlling magnetism in 2D CrI₃ by electrostatic doping. *Nat. Nanotechnol.* **13**, 549–553 (2018).
- Wang, Z. et al. Very large tunneling magnetoresistance in layered magnetic semiconductor CrI₃. *Nat. Commun.* **9**, 2516 (2018).
- Lin, G. et al. Critical behavior of two-dimensional intrinsically ferromagnetic semiconductor CrI₃. *Appl. Phys. Lett.* **112**, 072405 (2018).
- Deng, Y. et al. Gate-tunable room-temperature ferromagnetism in two-dimensional Fe₃GeTe₂. *Nature* **563**, 94 (2018).
- Fei, Z. et al. Two-dimensional itinerant ferromagnetism in atomically thin Fe₃GeTe₂. *Nat. Mater.* **17**, 778 (2018).
- Kim, K. et al. Large anomalous hall current induced by topological nodal lines in a ferromagnetic van der Waals semimetal. *Nat. Mater.* **17**, 794 (2018).
- Li, Q. et al. Patterning-induced ferromagnetism of Fe₃GeTe₂ van der Waals materials beyond room temperature. *Nano Lett.* **18**, 5974–5980 (2018).
- Luo, Y. K. et al. Opto-valleytronic spin injection in monolayer MoS₂/few-layer graphene hybrid spin valves. *Nano Lett.* **17**, 3877–3883 (2017).
- Wakamura, T. et al. Strong anisotropic spin-orbit interaction induced in graphene by monolayer WS₂. *Phys. Rev. Lett.* **120**, 106802 (2018).
- Wang, Z. et al. Origin and magnitude of ‘designer’ spin-orbit interaction in graphene on semiconducting transition metal dichalcogenides. *Phys. Rev. X* **6**, 041020 (2016).
- Yang, B. et al. Tunable spin-orbit coupling and symmetry-protected edge states in graphene/WS₂. *2D Mater.* **3**, 031012 (2016).
- Avsar, A. et al. Spin-orbit proximity effect in graphene. *Nat. Commun.* **5**, 4875 (2014).
- Zhong, D. et al. Van der Waals engineering of ferromagnetic semiconductor heterostructures for spin and valleytronics. *Sci. Adv.* **3**, e1603113 (2017).
- Seyler, K. L. et al. Valley manipulation by optically tuning the magnetic proximity effect in WSe₂/CrI₃ heterostructures. *Nano Lett.* **18**, 3823–3828 (2018).
- Zhang, Z., Ni, X., Huang, H., Hu, L. & Liu, F. Valley splitting in the van der Waals heterostructure WSe₂/CrI₃: the role of atom superposition. *Phys. Rev. B* **99**, 115441 (2019).
- Xie, J., Jia, L., Shi, H., Yang, D. & Si, M. Electric field mediated large valley splitting in the van der Waals heterostructure WSe₂/CrI₃. *Jpn J. Appl. Phys.* **58**, 010906 (2018).
- Yang, H. et al. Significant Dzyaloshinskii-Moriya interaction at graphene-ferromagnet interfaces due to the Rashba effect. *Nat. Mater.* **17**, 605 (2018).
- Manchon, A., Koo, H. C., Nitta, J., Frolov, S. & Duine, R. New perspectives for Rashba spin-orbit coupling. *Nat. Mater.* **14**, 871 (2015).
- Jiang, W. et al. Blowing magnetic skyrmion bubbles. *Science* **349**, 283–286 (2015).
- Woo, S. et al. Observation of room-temperature magnetic skyrmions and their current-driven dynamics in ultrathin metallic ferromagnets. *Nat. Mater.* **15**, 501 (2016).
- Nagaosa, N. & Tokura, Y. Topological properties and dynamics of magnetic skyrmions. *Nat. Nanotechnol.* **8**, 899 (2013).
- Yasuda, K. et al. Geometric hall effects in topological insulator heterostructures. *Nat. Phys.* **12**, 555 (2016).
- Liu, C. et al. Dimensional crossover-induced topological hall effect in a magnetic topological insulator. *Phys. Rev. Lett.* **119**, 176809 (2017).
- Ye, F. et al. Environmental instability and degradation of single- and few-layer WTe₂ nanosheets in ambient conditions. *Small* **12**, 5802–5808 (2016).
- Liu, G.-B., Shan, W.-Y., Yao, Y., Yao, W. & Xiao, D. Three-band tight-binding model for monolayers of group-vib transition metal dichalcogenides. *Phys. Rev. B* **88**, 085433 (2013).
- Jiang, W. et al. Skyrmions in magnetic multilayers. *Phys. Rep.* **704**, 1–49 (2017).
- Zhang, S., Zhang, J., Wen, Y., Chudnovsky, E. M. & Zhang, X. Determination of chirality and density control of Néel-type skyrmions with in-plane magnetic field. *Commun. Phys.* **1**, 36 (2018).
- León-Brito, N., Bauer, E. D., Ronning, F., Thompson, J. D. & Movshovich, R. Magnetic microstructure and magnetic properties of uniaxial itinerant ferromagnet Fe₃GeTe₂. *J. Appl. Phys.* **120**, 083903 (2016).
- Kim, D. et al. Antiferromagnetic coupling of van der Waals ferromagnetic Fe₃GeTe₂. *Nanotechnology* **30**, 245701 (2019).
- Thiaville, A., Rohart, S., Jué, É., Cros, V. & Fert, A. Dynamics of Dzyaloshinskii domain walls in ultrathin magnetic films. *EPL* **100**, 57002 (2012).

Acknowledgements

The sample synthesis and characterization efforts are supported by the US Department of Energy under grand DE-SC0019068. The transport measurements in this work are supported by the ARO program under contract W911NF-15-1-10561, National Science Foundation with Award nos. 1935362 and 1909416, the Spins and Heat in Nanoscale Electronic Systems (SHINES), an Energy Frontier Research Center funded by the US Department of Energy (DOE), Office of Science, Basic Energy Sciences (BES) under award #SC0012670. We are also grateful to the support from the National Science Foundation (DMR-1411085) and DOE, Office of Science, BES under Award No. DE-SC0020221. L-TEM measurements is based on research supported by the King Abdullah University of Science and Technology, Office of Sponsored Research and under the award No. OSR-2016-CRG5-2977.

Author contributions

Y.W. and K.L.W. conceived the work and K.L.W. supervised the project. W.W. grew the FGT bulk crystals and Y.L.Z., J.H., and Z.M. grew the WTe₂ bulk crystals. G.Y. did the simulation. T.T. and K.W. provided the h-BN crystal. Y.W. fabricated devices and performed the transport measurements. S.Z., J.Z., and X.Z. performed the Lorentz transmission electron microscopy measurements. K.W. and Y.W. carried out the atomic force microscopy measurements. C.F., C.W., and X.H. prepared the bottom electrodes. Y.W. analyzed the data with the help from Q.S. and J.Z. Y.W. and K.L.W. wrote the paper with input from all authors.

Competing interests

The authors declare no competing interests.

Additional information

Supplementary information is available for this paper at <https://doi.org/10.1038/s41467-020-17566-x>.

Correspondence and requests for materials should be addressed to K.L.W.

Peer review information *Nature Communications* thanks Henrik Ronnow and the other, anonymous, reviewer(s) for their contribution to the peer review of this work. Peer reviewer reports are available.

Reprints and permission information is available at <http://www.nature.com/reprints>

Publisher's note Springer Nature remains neutral with regard to jurisdictional claims in published maps and institutional affiliations.



Open Access This article is licensed under a Creative Commons Attribution 4.0 International License, which permits use, sharing, adaptation, distribution and reproduction in any medium or format, as long as you give appropriate credit to the original author(s) and the source, provide a link to the Creative Commons license, and indicate if changes were made. The images or other third party material in this article are included in the article's Creative Commons license, unless indicated otherwise in a credit line to the material. If material is not included in the article's Creative Commons license and your intended use is not permitted by statutory regulation or exceeds the permitted use, you will need to obtain permission directly from the copyright holder. To view a copy of this license, visit <http://creativecommons.org/licenses/by/4.0/>.

© The Author(s) 2020