

UC Irvine

UC Irvine Previously Published Works

Title

Site-specific, TALENs-mediated transformation of Bombyx mori

Permalink

<https://escholarship.org/uc/item/0c43f79p>

Authors

Wang, Yueqiang

Tan, Anjiang

Xu, Jun

et al.

Publication Date

2014-12-01

DOI

10.1016/j.ibmb.2014.10.003

Peer reviewed



Published in final edited form as:

Insect Biochem Mol Biol. 2014 December ; 55: 26–30. doi:10.1016/j.ibmb.2014.10.003.

Site-specific, TALENs-mediated transformation of *Bombyx mori*

Yueqiang Wang^{#1,2}, Anjiang Tan^{#1}, Jun Xu^{1,2}, Zhiqian Li^{1,2}, Baosheng Zeng^{1,2}, Lin Ling¹, Lang You¹, Yazhou Chen¹, Anthony A. James^{3,*}, and Yongping Huang^{1,*}

¹Key Laboratory of Insect Developmental and Evolutionary Biology, Institute of Plant Physiology and Ecology, Shanghai Institutes for Biological Sciences, Chinese Academy of Sciences, Shanghai 200032, China

²University of Chinese Academy of Sciences, Beijing 100049, China

³Departments of Microbiology & Molecular Genetics and Molecular Biology & Biochemistry, University of California, Irvine, CA 92697-3900

These authors contributed equally to this work.

Abstract

Transposon-based genetic transformation has facilitated insect functional genomics and new strategies of pest management. However, there is a need for alternative, site-specific approaches to overcome limitations of random integration (and associated position-effects) and potential instability of inserted transgenes. Here we describe a transposon-free, site-specific genetic transformation system mediated by transcription activator-like effector nucleases (TALENs) in the silkworm, *Bombyx mori*, a lepidopteran model insect. We successfully established a site-specific transgenic system with comparable transformation efficiency to transposon-based genetic transformation through microinjection of TALENs mRNA targeting the *BmBLOS2* locus and a linearizable donor plasmid encoding an expression cassette of the DsRed2 red fluorescent protein. This system provides a valuable approach for insect transgenesis and will enable future functional gene analysis and generate novel applications in agricultural and medical insect pest-management technologies.

Keywords

Bombyx mori; TALENs; homologous recombination

1. Introduction

Conventional insect transgenesis (IT) technologies for functional genomics and the development of novel applications in agricultural and medical insect pest management have

*Correspondence: Anthony A. James, Tel: +1-949-824-5930; Fax: +1-949-8242814; aajames@uci.edu; Yongping Huang, Tel: +86-21-54924047; Fax: +86-21-54924015; yphuang@sibs.ac.cn;

Publisher's Disclaimer: This is a PDF file of an unedited manuscript that has been accepted for publication. As a service to our customers we are providing this early version of the manuscript. The manuscript will undergo copyediting, typesetting, and review of the resulting proof before it is published in its final citable form. Please note that during the production process errors may be discovered which could affect the content, and all legal disclaimers that apply to the journal pertain.

depended until recently on non-autonomous transposable elements such as *piggyBac*, *Hermes* and *Minos* (Robinson et al., 2004). These elements have a number of disadvantages resulting from random integration and insertion-site effects, including mutagenesis and local enhancer influences (Wilson et al., 1990). In addition, some species also have pre-existing autonomously active transposons, and these may contribute to instability of inserted transgenes (Labrador and Corces, 1997). Hence, deletion of transposon terminal sequence is needed to achieve a stable germline transformation (Handler et al., 2004; O'Brochta and Handler, 2008). Site-specific bacteriophage recombinases or integrases for insect genomic manipulation mitigate some of these problems, however, they require prior introduction into chromosomes of 'docking' sites using transposon-based genetic transformation (Schetelig et al., 2011; Schetelig et al., 2009). Thus, there is a need in insects for alternative, site-specific approaches to create generalizable IT strategies to advance functional genetics and practical applications.

Recently-established, custom-engineered nuclease technologies such as zinc finger nucleases (ZFNs), transcription activator-like effector nucleases (TALENs) and clustered regularly-interspaced short-palindromic repeats and crispr-associated protein (CRISPR/Cas) systems provide promising alternatives. These engineered nucleases usually induce double-strand DNA breaks (DSBs) at target genomic sites that are repaired by non-homologous end joining (NHEJ) or homologous recombination (HR) in the presence of homologous donor template DNA (Gaj et al., 2013). If the two broken DNA ends have tandem-repeated nucleotide sequences, DSBs also could be repaired by single-strand annealing (SSA) recombination (Heyer et al., 2010). ZFNs, TALENs or CRISPR/Cas systems have been used to induce targeted integration in several species but not in *Bombyx mori* yet (Baena-Lopez et al., 2013; Cui et al., 2011; Dickinson et al., 2013; Katsuyama et al., 2013; Yang et al., 2013; Zu et al., 2013). More research is necessary to develop general strategies that can be applied to a variety of agriculturally- and medically-important insect species.

The domesticated silkworm, *Bombyx mori*, is an economically valuable lepidopteran model insect. ZFNs-, TALENs- and CRISPR/Cas9-mediated targeted gene mutagenesis were achieved recently in this species (Ma et al., 2012; Takasu et al., 2010; Yueqiang Wang, 2013). The *BmBLOS2* gene, a *B. mori* homolog of the human biogenesis of lysosome-related organelles complex 1, subunit 2, is located on the Z chromosome and is responsible for urate granule synthesis in the larval epidermis (Fujii et al., 2010). Mutagenesis of *BmBLOS2* results in a larval epidermal color change from opaque to translucent, the so-called 'oily skin phenotype' (OSP). OSP is detected easily throughout larval stages, especially in the final larval instar, making *BmBLOS2* an excellent marker gene for designing advanced IT strategies. We began addressing this by developing TALENs-mediated, targeted integration at the *BmBLOS2* locus in *B. mori*.

2. Materials and methods

2.1. TALENs vector construction and luciferase SSA assay

DNA fragments complementary to selected targeting sites were cloned and sequenced to confirm the absence of single-nucleotide polymorphisms. TALENs targeting the *BmBLOS2* exon2 were constructed by Golden-Gate assembly and ligated into the pTD1 vector

(Shimazu) containing a T7 promoter sequence, polyA signal and T7 transcription terminator. A human cytomegalovirus (*CMV*) promoter was sub-cloned into pTD1-TALEN vectors to facilitate the luciferase SSA assay in 293T cells. A firefly luciferase single-strand annealing (SSA) assay reporter vector was constructed following reported methods (Huang et al., 2011). To determine activity *in vitro*, TALENs vectors (200ng for each TALEN vector), luciferase SSA reporter vector (100ng) and an internal control vector (100ng) expressing the *Renilla* luciferase were co-transfected with Lipofectamine 2000 (Life Technologies) in triplicate into 293T cells in 24-wells plates. Cells were harvested after 24 h and luciferase activity was determined using a dual-luciferase assay (Promega). For transcription *in vitro* of TALENs mRNA, TALENs vectors were linearized by restriction endonuclease *NotI* (Fermentas) digestion followed by phenol/chloroform/isoamylalcohol (25:24:1, Sangon) treatment, and used as templates in subsequent transcription experiments *in vitro*. TALENs mRNA was synthesized with mMESAGE mMACHINE T7 kit (Ambion).

2.2. Donor construction

Donor A (pMD18T_L-Homo_HR5-IE1-DsRed2-SV40_R-Homo) was constructed as follows: a *HR5-IE1-DsRed2-SV40* cassette (with *SaII* and *BamHI* sites at 5'-end, *AscI* and *ApaI* sites at 3'-end), including a *HR5-IE1* promoter, *DsRed2* ORF and *SV40* polyA signal, was sub-cloned into the pMD18T-simple vector (Takara) to generate pMD18T_HR5-IE1-DsRed2-SV40. An 820bp 5'-homologous arm (L-Homo), digested by *SaII* and *BamHI*, and a 791bp 3'-homologous arm (R-Homo), double-digested by *AscI* and *ApaI*, were sub-cloned separately into pMD18T_HR5-IE1-DsRed2-SV40. Donor B has the same structure, except that it has two 49bp TALENs sites flanked with the left and right homologous arms.

2.3. Silkworm rearing and microinjection

A multivoltine, nondiapausing silkworm strain, Nistari, was used for all experiments. TALENs mRNA (300 ng/μl for each) and donor DNA (Donor A or Donor B, 250 ng/μl) were co-injected into preblastoderm embryos that then were incubated at 25 °C in a humidified chamber for 10–12 days until larval hatching. Larvae were reared on fresh mulberry leaves under standard conditions. Putative transgenic adult G₀ were sib-mated or crossed with wild-type moths, and G₁ progeny were scored for the presence of the marker gene under fluorescence microscopy (Nikon AZ100).

2.4. Transgene integration analysis

Genomic DNA was extracted from *DsRed2*-positive G₁ mutant animals by standard SDS lysis–phenol treatment after incubation with proteinase K, followed by RNase A treatment and purification. 5'- and 3'-end junction fragments at the integration event were cloned separately and sequenced. Amplification conditions were 94°C for 2 min, 30 cycles of 94°C for 10s, 55°C for 10s, and 68°C for 6min, followed by a final extension period 68°C for 10min. Amplified products were cloned and sequenced. Primers used in here were listed in the supplementary information (**Supplementary Table 1**).

2.5. Off-target sites detection

Off-target integration was investigated by inverse PCR. Genomic DNA was extracted from G₁ transgenic moths by standard SDS lysis-phenol treatment after incubation with proteinase K, followed by RNase A treatment and purification. DNA was digested with *Nla*III and circularized by ligation for 6 hours at 16 °C. The 3'-end transgene junction:genome sequences were amplified using the primers (**Supplementary Table 1**) designed to anneal to the 3' homology arm of the donor vector. The PCR conditions were as follows: 94 °C for 2 min, 30 cycles of 94 °C for 10 s, 50 °C for 10 s, and 65 °C for 2 min, followed by a final extension period of 65 °C for 10 min. Amplified fragments were cloned and sequenced.

3. Results

3.1. TALENs target site and related donor

TALENs were designed to target exon 2 of the *BmBLOS2* locus (**Fig. 1A**). The TALENs activity *in vitro* was determined in mammalian 293T cells by using the firefly luciferase single strand annealing (SSA) recombination assay (Huang et al., 2011). The luciferase activity of the experimental samples was 4.4-fold higher compared with control, indicating that the TALENs worked efficiently (**Supplementary Fig.1**).

The design of an efficient homologous donor DNA is crucial for site-specific transgene integration in custom-engineered nuclease technologies. Here we prepared two kinds of donor DNAs, the first of which, designated 'donor A', is a circular construct that uses the baculovirus immediate early one (*IE1*) gene promoter to express the red fluorescent protein, DsRed2, ubiquitously throughout the insect. Two genomic fragments flanking the TALENs targeting site in *BmBLOS2* locus (820bp and 791bp at the 5'- and 3'-ends, respectively) were amplified and served as homologous left and right arms. The second donor construct, designated 'donor B', has the same structure as donor A except that it includes two 49bp TALENs site sequences flanking the left and right homologous arms that can be digested *in vivo* by the corresponding endonuclease, releasing a linear donor homologous template (**Fig. 1B**).

3.2. TALENs induced high efficient germline transformation with donor B

A total of 1040 preblastoderm Nistari eggs were injected with a mixture of TALENs mRNA and donor A. Of these, 601 (57.8%) hatched and most of the larvae exhibited the OSP, demonstrating that the TALENs worked efficiently *in vivo*. Small deletions or insertions were detected at the target site (**Fig. 1C**). A total of 173 animals survived to adulthood and these were sib-mated or out-crossed to wild-type moths, creating 73 egg batches. Unfortunately, fluorescent microscopic screening at late embryonic and larval stages did not recover any *DsRed2*-positive G₁ individuals.

Previous reports indicated that a circular homologous donor may not be efficient enough in some systems for enhancing germline integration *in vivo* (Cui et al., 2011; Zu et al., 2013). Therefore, we repeated the experiments with the linearizable donor B construct. Of the injected 720 preblastoderm eggs, 374 (51.9%) hatched and 206 animals survived to the

pupal stage. Chimeric expression of *DsRed2* was detected in 72 pupas which indicated high somatic integration efficiency (**Supplementary Fig. 2**). Surviving moths were sib-mated or out-crossed to wild-type insects and 76 egg batches were examined for fluorescence. Screening at the late embryonic and larval stages detected six *DsRed2*-positive batches (broods) and one or more *DsRed2*-positive individuals were recovered in each brood. Red fluorescence was detectable in the whole body throughout all developmental stages (**Fig. 2**). The transformation efficiency, 7.9%, was defined as the proportion of fertile injection survivors producing one or more transgenic offspring (Tan et al., 2013).

3.3. Site-specific integration was achieved in *BmBLOS2* locus

A total of 30 *DsRed2*-positive G₁ individuals were recovered from the six broods. Four of these had the OSP and the remaining 26 were wild-type. Since the *BmBLOS2* is located on the Z chromosome, these G₁ transgenic animals with wild-type skin color were likely heterozygous males (ZZ type) and polymerase chain reaction (PCR) based analyses verified the presence of diagnostic fragments consistent with the precise integrity at *BmBLOS2* locus in three distinct broods 1, 3 and 6 (**Fig. 3A and 3B**). PCR-based analyses of these broods failed to amplify the complete integrated fragment, most likely due to complex rearrangements arising from the DNA repair mechanism involved in homologous recombination (Dickinson et al., 2013). However, we confirmed the precise integration of the complete *HR5-IE1-DsRed2-SV40* expression cassette by gene amplification and sequencing separately the 5'- and 3'-end junction (**Supplementary Sequences**). Furthermore, identical site-specific transgene integration was observed in all of the three broods. These data support the conclusion that we recovered three independent mutations in the *BmBLOS2* locus.

3.4. Integration of exogenous marker gene is genetic heritable

To confirm heritable germline transformation in G₂, heterozygous transgenic male G₁ moths of brood 1, which showed wild type skin color, were mated with wild type moths. In G₂ animals, females showing OSP and *DsRed2*-positive and males showing no OSP but *DsRed2*-positive were recovered (**Fig. 4A and 4B**), suggesting the site-specific germline integration was stable. For broods 2, 4 and 5, we could not detect the diagnostic fragments, suggesting the potential off-target effect. We performed inverse PCR to investigate the exact genomic integration sites. Although the transgene integration could not be validated in brood 4 and 5, we localized the transgene of brood 2 at Chromosome 17, indicating that off-target effects should be considered in TALEN-mediated genetic transformation.

4. Discussion

A transposon-free, site-specific germline transformation system with a technically- useful transformation efficiency (7.9%) is established successfully in the silkworm, *B. mori*. Although there was a report on successful transgene integration event in *B. mori* mediated by ZFNs, the integration efficiency was extremely low (Daimon et al., 2013). Although the detailed mechanisms of the site-specific integration processes are unclear, we provide evidence that the insertions recovered in our work result from NHEJ, HR and SSA. A circular donor plasmid was impossible to be processed to generate a single-strand DNA

(ssDNA) tail during DSB repair; thus, integration of the circular donor most likely occurred only through the HR repair mechanism (Symington and Gautier, 2011). Circular donor molecules function as templates and this type of exogenous donor usually cannot be integrated directly at the target site. DNA strand invasion is indispensable in HR-mediated integration and we anticipate that circular donors with longer homologous arms may have higher probabilities of facilitating this process (Beumer et al., 2013; San Filippo et al., 2008). The linearizable donors (donor B) can be resected to generate ssDNA tails during the DSB repair process. These donors contain long homologous ssDNA tails with the broken DNA ends and therefore may anneal with the ssDNA tail of broken DNA ends, similar to the SSA repair process, and facilitate efficient integration (Sugawara et al., 2000)

(**Supplementary Fig. 3**). In addition, the unexpected off-target events suggesting that the linearizable donors could also be directly integrated into organism genome through NHEJ mechanism. In this case, one should be aware of off-target effects when using linearizable donors although it increases integration efficiency.

The major merits of a transposon-free targeted IT system minimize concerns about variability of transgene activity in transgenic animals; also none of the hypothetical risks articulated in relation to the use of transgenic technology in agriculture apply in targeted IT (Dafa'alla et al., 2006). The current targeted IT system relies on NHEJ, SSA and HR repair in the presence of a linearizable homologous donor after TALENs-induced DSB. We propose that this system is extendable to other custom-engineered nuclease systems, such as ZFNs and CRISPR/Cas, to enhance efficiency of site-specific integration. Introduction of exogenous marker genes such as a fluorescent protein in targeted loci will facilitate screening mutagenesis schemes in most loci for which conveniently-assessable phenotypes do not occur. A reliable transposon-free targeted IT system will be an invaluable contribution to functional genetics of important insect species.

Supplementary Material

Refer to Web version on PubMed Central for supplementary material.

ACKNOWLEDGMENTS

We thank Dr. David Stanley (USDA-ARS, Columbia MO, USA) for comments on earlier drafts of this paper. This work was supported by grants from National Science Foundation of China (31030060), National Basic Research Program of China (2012CB114101), the External Cooperation Program of BIC, Chinese Academy of Sciences (Grant No. GJHZ201305) and the Shanghai Committee of Science and Technology, China (11JC1413900). AAJ was supported in part by a grant from the NIH NIAID (AI29746).

REFERENCES

- Baena-Lopez LA, Alexandre C, Mitchell A, Pasakarnis L, Vincent JP. Accelerated homologous recombination and subsequent genome modification in *Drosophila*. *Development*. 2013; 140:4818–4825. [PubMed: 24154526]
- Beumer KJ, Trautman JK, Mukherjee K, Carroll D. Donor DNA Utilization during Gene Targeting with Zinc-finger Nucleases. *G3 (Bethesda)*. 2013 doi: 10.1534/g3.112.005439.
- Cui X, Ji D, Fisher DA, Wu Y, Briner DM, Weinstein EJ. Targeted integration in rat and mouse embryos with zinc-finger nucleases. *Nat. Biotechnol*. 2011; 29:64–67. [PubMed: 21151125]

- Dafa'alla TH, Condon GC, Condon KC, Phillips CE, Morrison NI, Jin L, Epton MJ, Fu G, Alphey L. Transposon-free insertions for insect genetic engineering. *Nat. Biotechnol.* 2006; 24:820–821. [PubMed: 16823373]
- Daimon T, Kiuchi T, Takasu Y. Recent progress in genome engineering techniques in the silkworm, *Bombyx mori*. *Dev. Growth. Differ.* 2014; 56:14–25. [PubMed: 24175911]
- Dickinson DJ, Ward JD, Reiner DJ, Goldstein B. Engineering the *Caenorhabditis elegans* genome using Cas9-triggered homologous recombination. *Nat. Methods.* 2013; 10:1028–1034. [PubMed: 23995389]
- Fujii T, Daimon T, Uchino K, Banno Y, Katsuma S, Sezutsu H, Tamura T, Shimada T. Transgenic analysis of the BmBLOS2 gene that governs the translucency of the larval integument of the silkworm, *Bombyx mori*. *Insect. Mol. Biol.* 2010; 19:659–667. [PubMed: 20546041]
- Gaj T, Gersbach CA, Barbas CF 3rd. ZFN, TALEN, and CRISPR/Cas-based methods for genome engineering. *Trends. Biotechnol.* 2013; 31:397–405. [PubMed: 23664777]
- Handler AM, Zimowska GJ, Horn C. Post-integration stabilization of a transposon vector by terminal sequence deletion in *Drosophila melanogaster*. *Nat. Biotechnol.* 2004; 22:1150–1154. [PubMed: 15300258]
- Heyer WD, Ehmsen KT, Liu J. Regulation of homologous recombination in eukaryotes. *Annu. Rev. Genet.* 2010; 44:113–139. [PubMed: 20690856]
- Huang P, Xiao A, Zhou M, Zhu Z, Lin S, Zhang B. Heritable gene targeting in zebrafish using customized TALENs. *Nat. Biotechnol.* 2011; 29:699–700. [PubMed: 21822242]
- Katsuyama T, Akhmedov A, Seimiya M, Hess SC, Sievers C, Paro R. An efficient strategy for TALEN-mediated genome engineering in *Drosophila*. *Nucleic. Acids. Res.* 2013; 41:e163. [PubMed: 23877243]
- Labrador M, Corces VG. Transposable element-host interactions: regulation of insertion and excision. *Annu. Rev. Genet.* 1997; 31:381–404. [PubMed: 9442901]
- Ma S, Zhang S, Wang F, Liu Y, Xu H, Liu C, Lin Y, Zhao P, Xia Q. Highly efficient and specific genome editing in silkworm using custom TALENs. *PLoS One.* 2012; 7:e45035. [PubMed: 23028749]
- O'Brochta DA, Handler AM. Perspectives on the state of insect transgenics. *Adv Exp Med Biol.* 2008; 627:1–18. [PubMed: 18510010]
- Robinson AS, Franz G, Atkinson PW. Insect transgenesis and its potential role in agriculture and human health. *Insect. Biochem. Mol. Biol.* 2004; 34:113–120. [PubMed: 14871607]
- San Filippo J, Sung P, Klein H. Mechanism of eukaryotic homologous recombination. *Annu. Rev. Biochem.* 2008; 77:229–257. [PubMed: 18275380]
- Schetelig MF, Gotschel F, Viktorinova I, Handler AM, Wimmer EA. Recombination technologies for enhanced transgene stability in bioengineered insects. *Genetica.* 2011; 139:71–78. [PubMed: 20844938]
- Schetelig MF, Scolari F, Handler AM, Kittelmann S, Gasperi G, Wimmer EA. Site-specific recombination for the modification of transgenic strains of the Mediterranean fruit fly *Ceratitis capitata*. *Proc. Natl. Acad. Sci. U.S.A.* 2009; 106:18171–18176. [PubMed: 19828439]
- Sugawara N, Ira G, Haber JE. DNA length dependence of the single-strand annealing pathway and the role of *Saccharomyces cerevisiae* RAD59 in double-strand break repair. *Mol. Cell. Biol.* 2000; 20:5300–5309. [PubMed: 10866686]
- Symington LS, Gautier J. Double-strand break end resection and repair pathway choice. *Annu. Rev. Genet.* 2011; 45:247–271. [PubMed: 21910633]
- Takasu Y, Kobayashi I, Beumer K, Uchino K, Sezutsu H, Sajwan S, Carroll D, Tamura T, Zurovec M. Targeted mutagenesis in the silkworm *Bombyx mori* using zinc finger nuclease mRNA injection. *Insect. Biochem. Mol. Biol.* 2010; 40:759–765. [PubMed: 20692340]
- Tan A, Fu G, Jin L, Guo Q, Li Z, Niu B, Meng Z, Morrison NI, Alphey L, Huang Y. Transgene-based, female-specific lethality system for genetic sexing of the silkworm, *Bombyx mori*. *Proc. Natl. Acad. Sci. U.S.A.* 2013; 110:6766–6770. [PubMed: 23569267]
- Wilson C, Bellen HJ, Gehring WJ. Position effects on eukaryotic gene expression. *Annu. Rev. Cell. Biol.* 1990; 6:679–714. [PubMed: 2275824]

- Yang H, Wang H, Shivalila CS, Cheng AW, Shi L, Jaenisch R. One-step generation of mice carrying reporter and conditional alleles by CRISPR/Cas-mediated genome engineering. *Cell*. 2013; 154:1370–1379. [PubMed: 23992847]
- Wang Y, Li Z, Xu J, Zeng B, Ling L, You L, Chen Y, Huang Y, Tan A. The CRISPR/Cas System mediates efficient genome engineering in *Bombyx mori*. *Cell Res*. 2013; 23:1414–1416. [PubMed: 24165890]
- Zu Y, Tong X, Wang Z, Liu D, Pan R, Li Z, Hu Y, Luo Z, Huang P, Wu Q, Zhu Z, Zhang B, Lin S. TALEN-mediated precise genome modification by homologous recombination in zebrafish. *Nat. Methods*. 2013; 10:329–331. [PubMed: 23435258]

Highlights

Site-specific integration was achieved by co-injection of TALENs mRNA and a donor DNA construct;

Developing a solution to the problem of screening mutations induced by engineered nuclease injection;

Linearizeable donor DNAs with TALENs cleavage sites are more effective than circular donors at targeted gene knock-in.

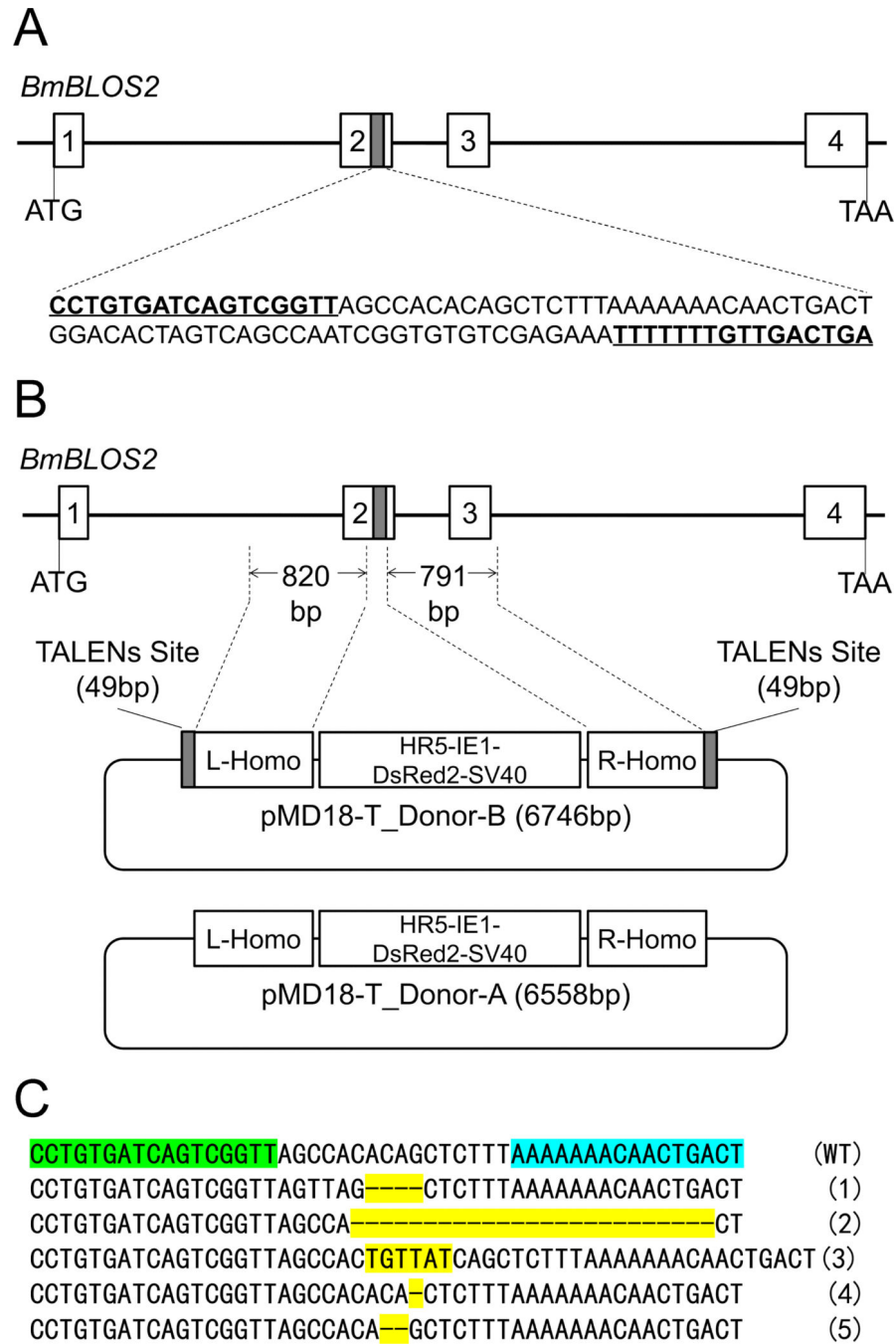


Fig.1. Schematic representation of TALENs targeting site and donor B. (A) Schematic representation of the TALENs targeting site. The thin black line represents the *BmBLOS2* genome locus with the open boxes signifying the four exons. A 49bp fragment (gray box) located in exon-2 is the targeting site. The sequences in bold and underlined are the TALENs targeting sequence. A 16bp sequence serves as a spacer between the two sites. (B) Schematic representation of the donor B. A cassette expressing a *DsRed2* marker (with a *HR5* enhancer sequence, driven by a baculovirus *IE1* promoter) was cloned into the

pMD18T- simple vector. Two homologous DNA fragments (L-homo and R-homo), 820bp and 791bp at the 5'- and 3'-ends, respectively, of the TALEN site were cloned separately into the left and right sides of the *DsRed2* cassette. The *DsRed2* marker with two homologous fragments was flanked by two of the 49bp TALENs sites (donor B). (C) Mutations detected in G₀ mutants with oily skin phenotype (OSP). Genomic DNA was extracted from G₀ mutants with severe OSP. Fragments covering the target site were amplified and sequenced. Small deletions or insertions resulting from non-homologous end joining repair were detected. Sequences highlight in green and blue are TALENs target sequence. Mutations are highlight in yellow.

Author Manuscript

Author Manuscript

Author Manuscript

Author Manuscript

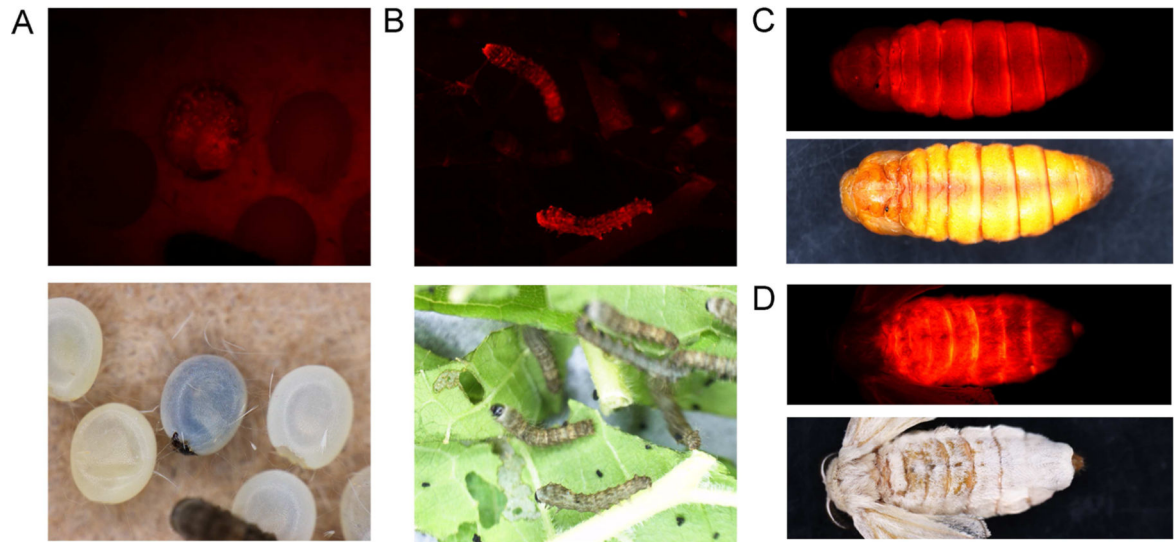
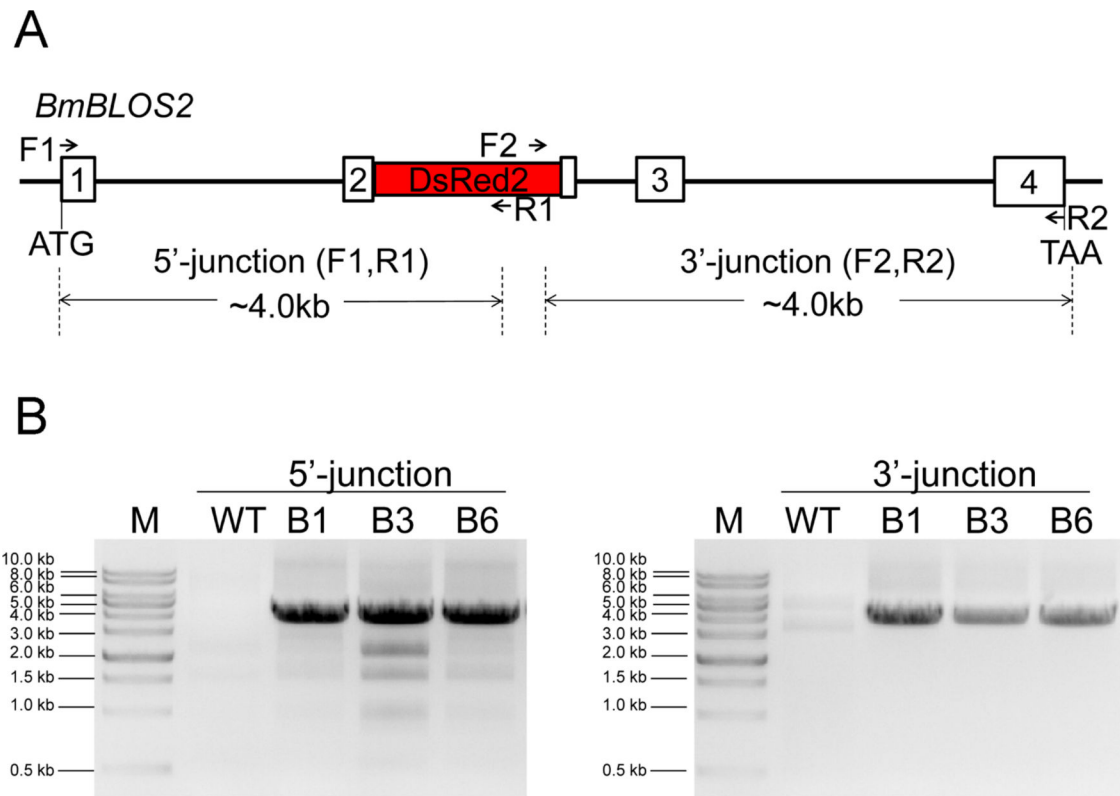
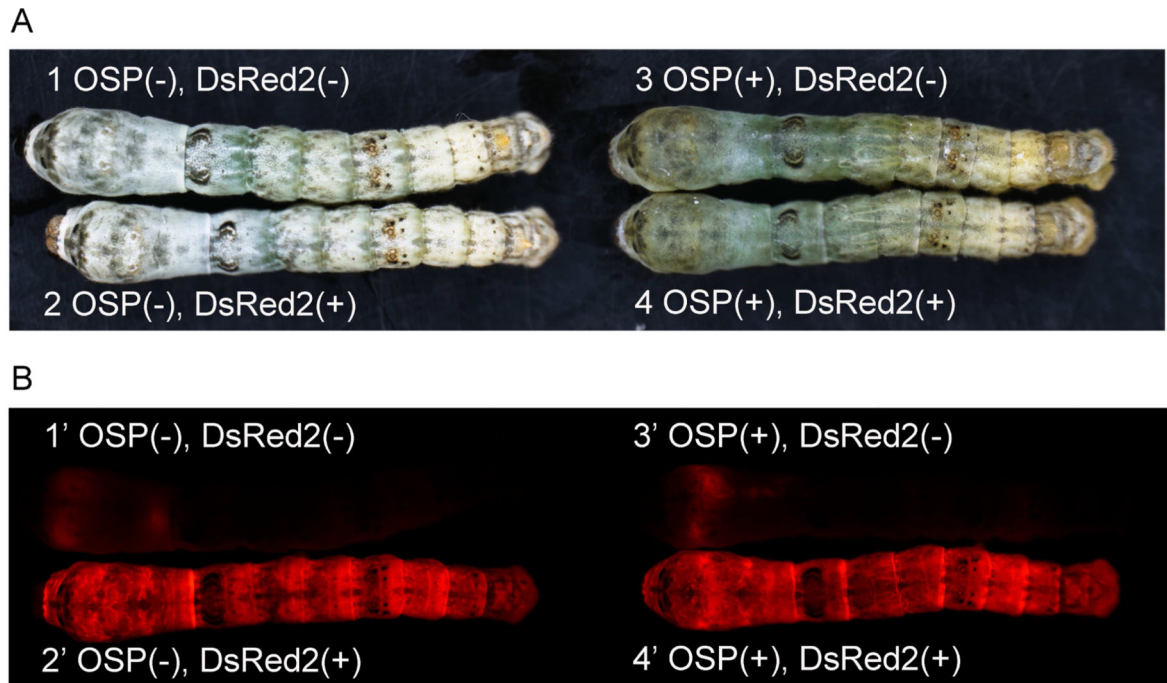


Fig.2. Red fluorescence could be detected in positive individuals at embryonic, larval, pupal and adult stages. *DsRed2* expression was driven by a baculovirus *IE1* promoter in a ubiquitous manner. Red fluorescence detected in embryos (A), the first instar larvae (B), pupa (C) and adult (D).

**Fig.3.**

Gene amplification analyses of transgene insertions in transformed silkworms. (A) Primer positions for amplification. The primer pairs F1/R1 and F2/R2 were used to amplify the 5'- and 3'-end insertion junctions, respectively. (B) The diagnostic DNA fragments for 5'- and 3'-end junctions were detected in brood-1 (B1), brood-3 (B3) and brood-6 (B6).

**Fig.4.**

DsRed2 and oily-skin phenotypes following germline transformed silkworms. Insects in (A) and (B) photographed with normal light and UV fluorescence, respectively. The wild-type larva has the normal skin color (OSP-) and no red fluorescence (*DsRed2*-) (1 and 1'). The heterozygous transformed male was OSP- but *DsRed2*+ (2 and 2'). The TALEN-induced mutant without transgene integration was OSP+ but *DsRed2*- (3 and 3'). The transformed female or male with both chromosomes modified was OSP+ and *DsRed2*+ (4 and 4').