

# UCLA

## UCLA Previously Published Works

### Title

Impact of local ablation on interconnected channels within ventricular scar: mechanistic implications for substrate modification.

### Permalink

<https://escholarship.org/uc/item/0c830411>

### Journal

Circulation: Arrhythmia and Electrophysiology, 6(6)

### Authors

Tung, Roderick  
Mathuria, Nilesh  
Nagel, Rich  
[et al.](#)

### Publication Date

2013-12-01

### DOI

10.1161/CIRCEP.113.000867

Peer reviewed



Published in final edited form as:

*Circ Arrhythm Electrophysiol.* 2013 December ; 6(6): 1131–1138. doi:10.1161/CIRCEP.113.000867.

## Impact of Local Ablation on Inter-Connected Channels within Ventricular Scar: Mechanistic Implications for Substrate Modification

Roderick Tung, MD, FHRS<sup>1</sup>, Nilesh S. Mathuria, MD<sup>2</sup>, Rich Nagel, AS<sup>1</sup>, Ravi Mandapati, MD<sup>1</sup>, Eric F. Buch, MD<sup>1</sup>, Jason S. Bradfield, MD<sup>1</sup>, Marmar Vaseghi, MD, MS<sup>1</sup>, Noel G. Boyle, MD, PhD<sup>1</sup>, and Kalyanam Shivkumar, MD, PhD, FHRS<sup>1</sup>

<sup>1</sup>UCLA Cardiac Arrhythmia Center, UCLA Health System, David Geffen School of Medicine at UCLA, Los Angeles, CA

<sup>2</sup>St. Luke's Health System/Texas Heart Institute, Houston, TX; University of Texas Health Science Center, Houston, TX

### Abstract

**Background**—The extent to which channels within scar are inter-connected is not known. The objective of the study was to evaluate the impact of local ablation of LPs on adjacent and remote areas of slow conduction with simultaneous multipolar mapping.

**Methods and Results**—Analysis was performed on consecutive patients referred for ablation of scar-mediated VT with double ventricular access. Ablation was performed targeting the earliest of LPs visualized on the multipolar catheter and the impact on later LPs was recorded. In 21 patients, a multipolar catheter placed within scar visualized spatially distinct LPs. Among 39 RF applications, ablation at earlier LPs had an effect on neighboring and remote LPs in 31 (80%), with delay in 8 (21%), partial elimination in 9 (23%), and complete elimination in 14 (36%). The mean distance where an ablation impact was detected was 17.6±14.7mm (range 2mm-50mm). Among all patients, 9.7±7.8 RF applications were delivered to homogenize the targeted scar region with a mean number of 23±12 LPs targeted.

**Conclusions**—Ablation can eliminate neighboring and remote areas of slow conduction, suggesting that channels within scar are frequently inter-connected. This is the first mechanistic demonstration to show that ablation can modify electrical activity in regions of scar outside of the known radius of an RF lesion. The targeting of relatively earlier LPs can expedite scar homogenization without the need for extensive ablation of all LPs.

### Keywords

ablation; ventricular tachycardia; mapping; late potential

### Introduction

Slow conduction via non-linear electrical impulse activation within complex scar architecture has been implicated in the pathogenesis of fractionated and delayed local electrical activity.<sup>1</sup> Late potentials (LP) mapped in sinus rhythm within scar have been

**Correspondence:** Roderick Tung, MD, FACC, FHRS UCLA Cardiac Arrhythmia Center UCLA Health System David Geffen School of Medicine at UCLA 100 UCLA Medical Plaza, Suite 660 Los Angeles CA 90095-1679 Tel: 310 267 8563 Fax: 310 794 6492 rtung@mednet.ucla.edu.

**Conflict of Interest Disclosures:** R.T. receives research grant from St. Jude Medical.

shown to have specificity for reentrant isthmuses.<sup>2-4</sup> While the elimination of LPs has been demonstrated to be effective in preventing recurrent VT, “homogenization” of all abnormal local electrical activity within scar has been proposed as a more comprehensive endpoint for substrate-based VT ablation. When compared to inducibility, extensive ablation within scar has been more predictive of clinical success.<sup>5-7</sup>

The extent of ablation required to “homogenize” an entire scar can be variable and result in prolonged procedural times. The impact of radiofrequency (RF) ablation of LPs on other spatially distinct LPs mapped within scar has not been previously quantified or reported. Double ventricular access using a multipolar mapping catheter<sup>8</sup> and ablation catheter, which has been used for rapid identification of critical isthmuses during VT ablation, can be a useful method to monitor the effect of local ablation on neighboring and remote regions of slow conduction within scar.

We hypothesized that 1) areas of LPs are necessarily activated through channels with earlier abnormal activation (FIGURE 1) 2) local ablation frequently impacts neighboring and even remote regions within scar and 3) ablation in the proximal part of a channel may be a more efficient method to “homogenize” scar in sinus rhythm.

## Methods

### Patient Population

From 2009-2013, 128 patients at 2 centers underwent mapping of scar-mediated VT using a multipolar catheter. Among these patients, 21 underwent ablation with double ventricular access using a multipolar catheter to guide and monitor RF ablation. Patients with spatially distinct LPs (>2mm apart) represented on more than one electrode pair at a stable multipolar catheter position were included for analysis.

The diagnosis of ischemic cardiomyopathy (ICM) was established by prior history of infarction with Q waves, focal wall motion abnormality, or fixed perfusion defect correlated with coronary stenosis or prior coronary intervention. All ablations for scar-mediated VT were performed under general anesthesia. Written informed consent was obtained from all patients. The UCLA Medical Center and University of Texas Health Science institutional review board approved review of this data.

### Electrophysiological Study and Electroanatomic Mapping

The approach and strategy for ablation of scar-mediated VT at our center has been previously reported.<sup>9</sup> Entrainment mapping was performed when VT was hemodynamically tolerated. In cases of hemodynamically unstable VT, all LP sites were tagged and pacemapping was performed. Sites with multiple exit sites (MES) and pace-mapped induction (PMI) were considered isthmus surrogates.<sup>9</sup> High-density electroanatomic maps were created in sinus rhythm (intrinsic= 13, RV paced=6, BiV paced=2) using CARTO (Biosense Webster, Diamond Bar, CA) or NAVX (St. Jude Medical, Minneapolis, MN) with greater density of sampling in regions of low voltage and border zone tissue (0.5-1.5mV). Multipolar mapping was performed using either a duodecapolar catheter (Livewire, 2-2-2 inter-electrode spacing, St. Jude Minneapolis MN), decapolar catheter (DecaNav, 2-8-2 interelectrode spacing, Biosense Webster, Diamond Bar, CA), or a 64-electrode basket catheter (Constellation 60 mm diameter, 5mm inter-electrode spacing, Boston Scientific, Natick, MA)

## Multipolar monitoring of LP ablation

All LPs (<1.5mV, with onset after QRS offset or split potential separated by 20ms isoelectric segment) identified were tagged on electroanatomic mapping, whether detected with the multipolar or ablation catheter. The multipolar catheter was positioned within scar in an orientation that recorded the largest number of LPs with a gradient of early-to-late activation. Ablation was performed at the earlier electrograms with late activity and the impact of ablation on neighboring (within 8mm of RF site) and remote electrodes (>8mm away from RF site) was classified into four responses if the local distal ablation signal was from ablation: 1) no effect 2) delay in activation 3) partial elimination of LP (abolition of sharp, high-frequency component within a far-field ventricular electrogram)<sup>6</sup> or 4) complete elimination of LP. (FIGURE 2)

If delay at the remote LP site was seen prior to elimination of the local LP, it was categorized as elimination. RF applications where instability of the multipolar catheter was suspected (change in far field electrogram of a given bipole pair or variability of electrograms in neighboring electrodes) were excluded. At least one multipolar catheter position to evaluate RF delivery was recorded in all patients and additional monitoring of ablation was left to the discretion of the operator.

In addition to analysis of individual RF applications, quantification of the total number of LPs mapped within the scar was performed. These were manually counted for each map and compared to the number of ablation lesions delivered to eliminate or modify the region of substrate targeted, which was verified by remapping after ablation.

RF ablation was performed using an open-irrigated catheter (ThermoCool or ThermCool SF, 3.5 mm, Biosense-Webster, Diamond Bar, CA) at 30-50W, temperature limit 45°C @ 30 ml flow rate or closed-loop irrigated catheter (Chilli, Boston Scientific, Natick MA) at 30-50W, temperature limit 45°C. The temperature limit for epicardial RF applications was 50°C. RF energy was applied for 60 seconds for each application. Ablation sites were tagged on the electroanatomic map and lesions were considered effective if they resulted in at least one of the following: a diminution or elimination of the local electrogram, failure to capture at 10mA at 2 ms pacing, or impedance drop >10Ω. Distances between LPs were calculated using the fluoroscopy, mapping system, and known interelectrode distances. When using a linear catheter, distances are reported as edge-to-edge to the more inner electrode of a pair. For example, the interelectrode distance between bipole 1,2 and bipole 5,6 using a 2-2-2 mm spacing with 1mm electrode size is 8mm.

## Acute Outcomes and Clinical Follow-Up

After ablation was performed in the region of the targeted VT, programmed stimulation was repeated with ventricular extrastimulus testing at drive cycles of 600 and 400 ms, with decrement by 10 ms until refractoriness or 200 ms, up to four extrastimuli at a minimum of two sites. Acute procedural success was defined as noninducibility after ablation. Partial success was defined as inducibility of only faster non-clinical VTs. Follow-up for VT recurrence and survival data were assessed from outpatient clinic notes, device interrogation, patient charts, and contact with the patients or referring physician by phone.

## Statistical analysis

All continuous data are reported as medians with 25% and 75% percentiles due to the small sample size, evidenced by the relatively large standard deviations observed in this cohort.

## Results

21 patients (ICM=15, NICM=2, ARVD=1, sarcoid=1, Chagas=1, noncompaction=1) underwent double ventricular access for VT ablation using a multipolar catheter with the intention of monitoring RF application effects within scar. The median age was 63 (52-70) years and all patients were male. The median ejection fraction was 25% (25-30%). Approximately half (48%) of patients referred had prior ablation and 90% were on antiarrhythmic medications. Patient characteristics are shown in TABLE 1.

Electroanatomic mapping findings are summarized in TABLE 2. A median of 614 (417-833) points were obtained for each map. A multipolar catheter (duodecapolar=16, decapolar=3, basket=2) was placed within scar to visualize spatially distinct LPs at a single stable position. The basket catheter was chosen for patients with apical scar. 9 patients underwent epicardial mapping and ablation, where two sheaths were placed into the pericardium using a double-wire technique through a single puncture.<sup>10</sup> Each patient had a median of 2 (1-2.5) RF applications targeted at eliminating multiple potentials visualized on the multipolar catheter. All other RF applications required to complete the ablation were performed without multipolar monitoring.

Among 39 RF applications, ablation at earlier abnormal potentials had an effect on neighboring LPs in 31 (80%), with delay in 8 (21%), partial elimination in 9 (23%), and complete elimination in 14 (36%). FIGURE 3 demonstrates ablation within a dense anteroapical infarct with ablation at DD 9,10 which results in elimination of all LP to 19,20 (26mm away). The median delay, when observed, was 26 ms (19-37 ms) on remote LPs. The median distance where an ablation effect was seen remotely was 15 mm (8-20 mm), with a range from 2mm up to 50mm from the RF application site. 61% (19/31) of the effects were remote (>8mm from RF site). FIGURE 4 demonstrates delay prior to elimination of a critical remote LP (mid-diastolic during VT) demonstrated with a basket catheter in a patient with history of a remote stab wound to the chest complicated cardiac perforation.

Among all patients, 7 (4-14) RF applications were delivered to homogenize the targeted scar region where a median number of 23 (12-33) LPs were mapped. FIGURE 5 is an example of ablation along the septal border zone of an anterior infarct, where the latest activity (dark blue and purple on propagation map setting) is seen in sinus rhythm. Only four ablations were required to eliminate 41 LPs mapped. Remapping in this region demonstrated elimination of late activity and LPs.

A median of 2 (1-3) VTs were induced with an average cycle length of 360 ms (325-410 ms) for the targeted VT. In five patients, diastolic activation during VT was recorded on the multipolar catheter at the exact same position that revealed a gradient of LPs in sinus rhythm. In all but one patient (FIGURE 3), the diastolic activation sequence during VT was reversed from LP activation in sinus rhythm. The interval between the earliest and latest LPs was longer during VT compared to sinus rhythm in all patients (136 ms (100-171 ms) vs. 57 ms (56-81 ms). The latest sinus rhythm LP in these patients (84 ms (90-128 ms) after QRS) was 33% (31-48%) of the TCL during diastole in VT. Concealed entrainment of an isthmus was demonstrated in two patients, and the activation of the LPs during entrainment was the same as during VT. (FIGURE 6)

MES was seen in 52% of patients (11/21), PMI was observed in 29% (6/21) and termination of a targeted VT was achieved in 52% (11/31) of cases. Two patients were noninducible throughout the procedure and the acute endpoint of noninducibility was obtained in 84% of the remainder (16/19) and a partial success was seen in 16% (3/19). At a median of 11 (6-18) months, 86% of patients remained free of recurrent VT.

## Discussion

The current study, to our knowledge, is the first to provide mechanistic evidence of the interconnected nature of channels within scar where 1) RF applications frequently modify regions of late activity within scar outside the known radius of an ablation lesion 2) the amount of ablation required to eliminate LPs is not as extensive as the number of LPs mapped and identified.

The intended elimination of all abnormal electrical activity within scar has been shown to be improve clinical freedom from recurrent VT compared to more limited strategies.<sup>5-7</sup> These more extensive approaches, however, may prolong procedural time and the duration of RF application to “homogenize” scar may be longer. The nature of abnormally fractionated, split, or local electrical activity within scar has been attributed to the zig-zag propagation of heterogeneous conducting channels interspersed and bounded by collagen.<sup>1, 11</sup> In this construct, every LP deep within scar is necessarily activated by an “earlier” later potential. The ablation of a more proximal, or entrance site in sinus rhythm is likely to have an effect on more delayed activation “downstream” in a channel.

Jais et al demonstrated that epicardial LPs could be abolished during endocardial ablation in 5 patients who underwent combined epi-endo ablation of VT, with the goal of eliminating all local abnormal ventricular activities (LAVA).<sup>6</sup> However, the local effects of endocardial and epicardial ablation on the same surface have not been systematically studied and quantified. Such an analysis requires double ventricular access with a stable multipolar catheter to monitor the impact of ablation on spatially adjacent and remote regions of scar. As Jais et al classified direct ablation of LAVA into four categories, we similarly classified “indirect” ablation effects on neighboring and remote ablation into four categories only when the local electrogram was eliminated. In this analysis, we also demonstrate that fewer ablation lesions are required to eliminate or modify multiple LPs.

Irrigated ablation has been shown to create lesions  $14 \pm 3$  mm in diameter with a lesion depth  $6 \pm 1$  mm on infarcted epicardial tissue in vivo.<sup>12</sup> Similar lesion diameters (14 mm) with high power irrigated technology have been shown in ex vivo thigh preparations. Therefore, any effects seen outside of the radius ( $>8$ mm) cannot be attributed to direct resistive or conductive heating. In this study, we observed ablation impact up to the entire length of a duodecapolar catheter which measures 50mm. The remote effects of ablation are likely to be underestimated with the current methodology when calculating the closest distance between the inner electrodes with edge-to-edge reporting. Theoretically the maximum distance between a bipole pair 1,2 and 3,4 with 2 mm spacing may be as high as 10mm.

An alternative to displaying scar as gradations of low voltage is displaying activation maps of progressively late electrical activity in sinus rhythm (FIGURE 5). This provides more of the “functional” characteristics of arrhythmogenic scar, which is complementary to “structural” low voltage areas. The current findings suggest that ablation targeted at the “border zone” of the latest activity region may be a more efficient approach to homogenize scar. This approach would be aimed at eliminating entrances into the latest activity in sinus rhythm, which would represent the exit during VT.

As we have previously demonstrated MES when pacing within scar, it is plausible to expect multiple entrances into a given LP. Delay of a LP with ablation of an earlier LP may be due to conduction slowing or alternatively, a shift to a different entrance into channel. Functional conduction slowing during reentry likely accounts for the prolongation in the interval between LPs seen during VT than in sinus rhythm. However, activation of a channel through multiple wavefronts during sinus rhythm, as opposed to a singular wavefront during VT,

may also contribute to this phenomenon. Further studies are required to assess the impact of differential pacing from different scar border zones on the identification of LP as preferential entrance into scar may rely on directionality of the wavefront and anisotropic conduction.

### Limitations

The intended purpose of the study is to provide mechanistic insight into the effects of ablation within scar via analysis of individual RF applications as well as the sum total extent of ablation required to eliminate the total number of LP mapped. The objective of the present study is not to propose monitoring of all ablation lesions with a multipolar mapping catheter, as this technique can be time-consuming. We recognize that only the minority of lesions delivered during the ablation procedure were monitored with the double access setup. This is largely due to the fact that these observations require a stable catheter position demonstrating multiple LPs and careful manipulation of the ablation catheter toward the targeted bipole without disturbing the multipolar catheter position or creating inter-catheter mechanical artifact.

The observed inter-connectedness of channels within scar may not be generalizable to all scar substrates as only patients in whom multiple potentials are recorded at a single catheter position were included. Multiple etiologies of scar were included in this cohort and the small sample size is inadequate to draw conclusions across all substrates.

Only electrograms with a gradient of late activation were chosen, which biases the ablation lesions towards orientation along a channel. However, the absence of remote impact detected during local ablation does not exclude effects on regions that may not be contacted by the electrodes on the multipolar catheter. Different multipolar catheters were used within this cohort, and the use of smaller interelectrode spacing may increase the ability to detect ablation impact within scar. Further, remote impact on regions outside of 50 mm may be present but cannot be proven using a single duodecapolar catheter.

Distances of remote impact were estimated using “field scaling” from known interelectrode size and spacing as well as fluoroscopy. The linear catheter is frequently curved to improve mapping contact on the mapping surface contour and therefore, an overestimation of the distances may result as they are calculated based on a linear orientation. For this reason, we chose to report edge-to-edge distances between the most inner electrodes to avoid overestimation of ablation effects.

### Conclusions

Local ablation frequently impacts and eliminates neighboring and spatially remote areas of slow conduction, suggesting that channels within scar are often inter-connected. This is the first mechanistic demonstration to show that ablation can modify electrical activity in regions of scar outside of the known radius of a RF application. The targeting of relatively earlier LPs may expedite a scar homogenization strategy without the need for extensive ablation. Simultaneous multipolar mapping during ablation may be of clinical value.

### Supplementary Material

Refer to Web version on PubMed Central for supplementary material.

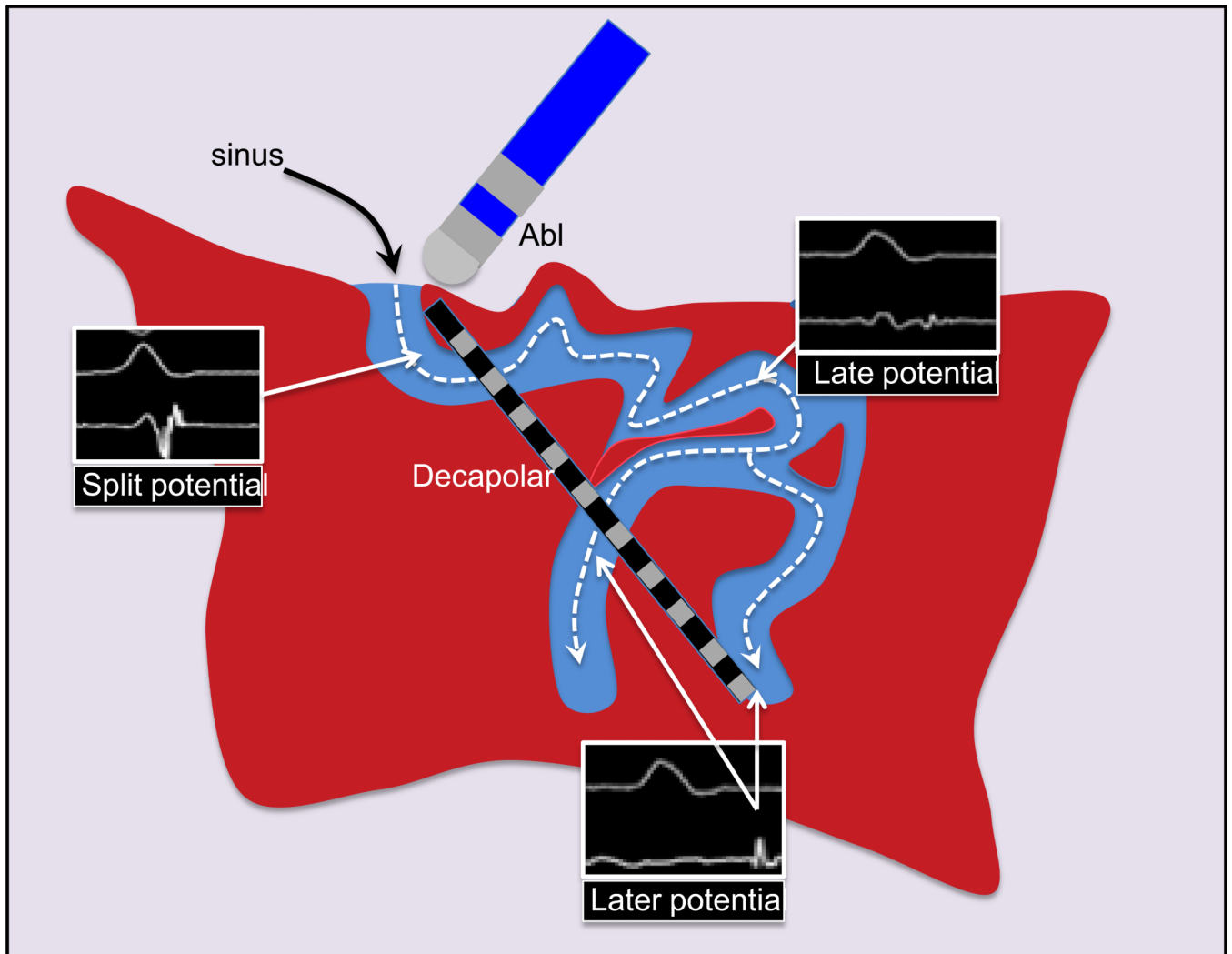
### Acknowledgments

**Funding Sources:** K.S. is supported by the NHLBI (R01HL084261).

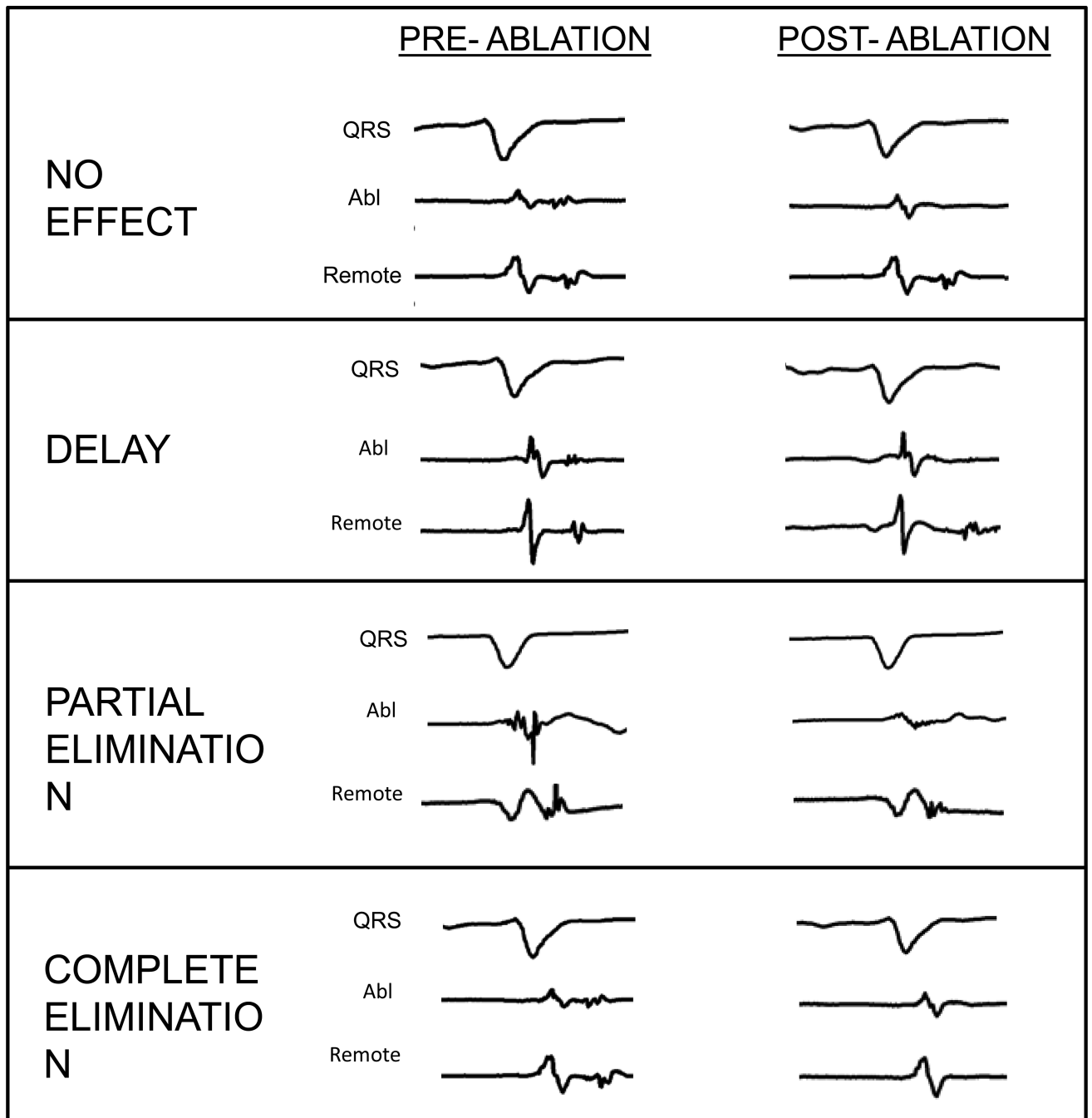
## References

1. de Bakker JM, van Capelle FJ, Janse MJ, Tasseron S, Vermeulen JT, de Jonge N, Lahpor JR. Slow conduction in the infarcted human heart. 'Zigzag' course of activation. *Circulation*. 1993; 88:915–926. [PubMed: 8353918]
2. Arenal A, Glez-Torrecilla E, Ortiz M, Villacastin J, Fdez-Portales J, Sousa E, del Castillo S, Perez de Isla L, Jimenez J, Almendral J. Ablation of electrograms with an isolated, delayed component as treatment of unmappable monomorphic ventricular tachycardias in patients with structural heart disease. *J Am Coll Cardiol*. 2003; 41:81–92. [PubMed: 12570949]
3. Bogun F, Bender B, Li YG, Groenefeld G, Hohnloser SH, Pelosi F, Knight B, Strickberger SA, Morady F. Analysis during sinus rhythm of critical sites in reentry circuits of postinfarction ventricular tachycardia. *J Interv Card Electrophysiol*. 2002; 7:95–103. [PubMed: 12391426]
4. Bogun F, Good E, Reich S, Elmouchi D, Igic P, Lemola K, Tschopp D, Jongnarangsin K, Oral H, Chugh A, Pelosi F, Morady F. Isolated potentials during sinus rhythm and pace-mapping within scars as guides for ablation of post-infarction ventricular tachycardia. *J Am Coll Cardiol*. 2006; 47:2013–2019. [PubMed: 16697318]
5. Di Biase L, Santangeli P, Burkhardt DJ, Bai R, Mohanty P, Carbucicchio C, Dello Russo A, Casella M, Mohanty S, Pump A, Hongo R, Beheiry S, Pelargonio G, Santarelli P, Zucchetti M, Horton R, Sanchez JE, Elayi CS, Lakkireddy D, Tondo C, Natale A. Endo-epicardial homogenization of the scar versus limited substrate ablation for the treatment of electrical storms in patients with ischemic cardiomyopathy. *J Am Coll Cardiol*. 2012; 60:132–141. [PubMed: 22766340]
6. Jais P, Maury P, Khairy P, Sacher F, Nault I, Komatsu Y, Hocini M, Forclaz A, Jadidi AS, Weerasooryia R, Shah A, Derval N, Cochet H, Knecht S, Miyazaki S, Linton N, Rivard L, Wright M, Wilton SB, Scherr D, Pascale P, Roten L, Pederson M, Bordachar P, Laurent F, Kim SJ, Ritter P, Clementy J, Haissaguerre M. Elimination of local abnormal ventricular activities: a new end point for substrate modification in patients with scar-related ventricular tachycardia. *Circulation*. 2012; 125:2184–2196. [PubMed: 22492578]
7. Vergara P, Trevisi N, Ricco A, Petracca F, Baratto F, Cireddu M, Bisceglia C, Maccabelli G, Della Bella P. Late potentials abolition as an additional technique for reduction of arrhythmia recurrence in scar related ventricular tachycardia ablation. *J Cardiovasc Electrophysiol*. 2012; 23:621–627. [PubMed: 22486970]
8. Tung R, Nakahara S, Maccabelli G, Buch E, Wiener I, Boyle NG, Carbucicchio C, Bella PD, Shivkumar K. Ultra high-density multipolar mapping with double ventricular access: a novel technique for ablation of ventricular tachycardia. *J Cardiovasc Electrophysiol*. 2011; 22:49–56. [PubMed: 20653813]
9. Tung R, Mathuria N, Michowitz Y, Yu R, Buch E, Bradfield J, Mandapati R, Wiener I, Boyle N, Shivkumar K. Functional pace-mapping responses for identification of targets for catheter ablation of scar-mediated ventricular tachycardia. *Circ Arrhythm Electrophysiol*. 2012; 5:264–272. [PubMed: 22333344]
10. Horowitz BN, Vaseghi M, Mahajan A, Cesario DA, Buch E, Valderrabano M, Boyle NG, Ellenbogen KA, Shivkumar K. Percutaneous intrapericardial echocardiography during catheter ablation: a feasibility study. *Heart Rhythm*. 2006; 3:1275–1282. [PubMed: 17074631]
11. de Bakker JM, van Capelle FJ, Janse MJ, Tasseron S, Vermeulen JT, de Jonge N, Lahpor JR. Fractionated electrograms in dilated cardiomyopathy: origin and relation to abnormal conduction. *J Am Coll Cardiol*. 1996; 27:1071–1078. [PubMed: 8609323]
12. d'Avila A, Houghtaling C, Gutierrez P, Vragovic O, Ruskin JN, Josephson ME, Reddy VY. Catheter ablation of ventricular epicardial tissue: a comparison of standard and cooled-tip radiofrequency energy. *Circulation*. 2004; 109:2363–2369. [PubMed: 15096448]



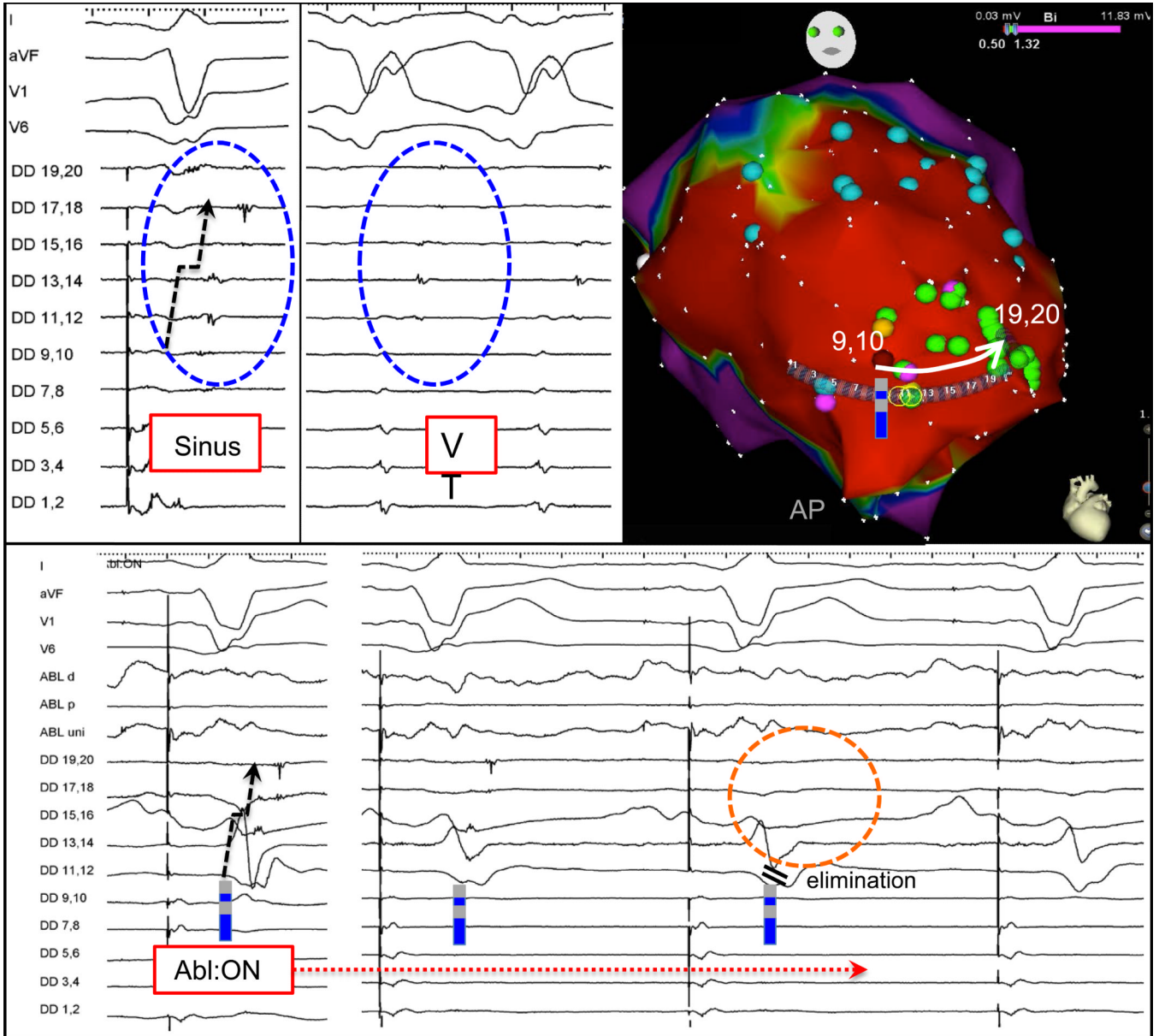


**Figure 1.** Schematic of activation within scar demonstrating progressively late activation after the QRS in sinus rhythm. A decapolar catheter oriented along this channel can detect multiple areas with LP and monitor the impact of ablation.

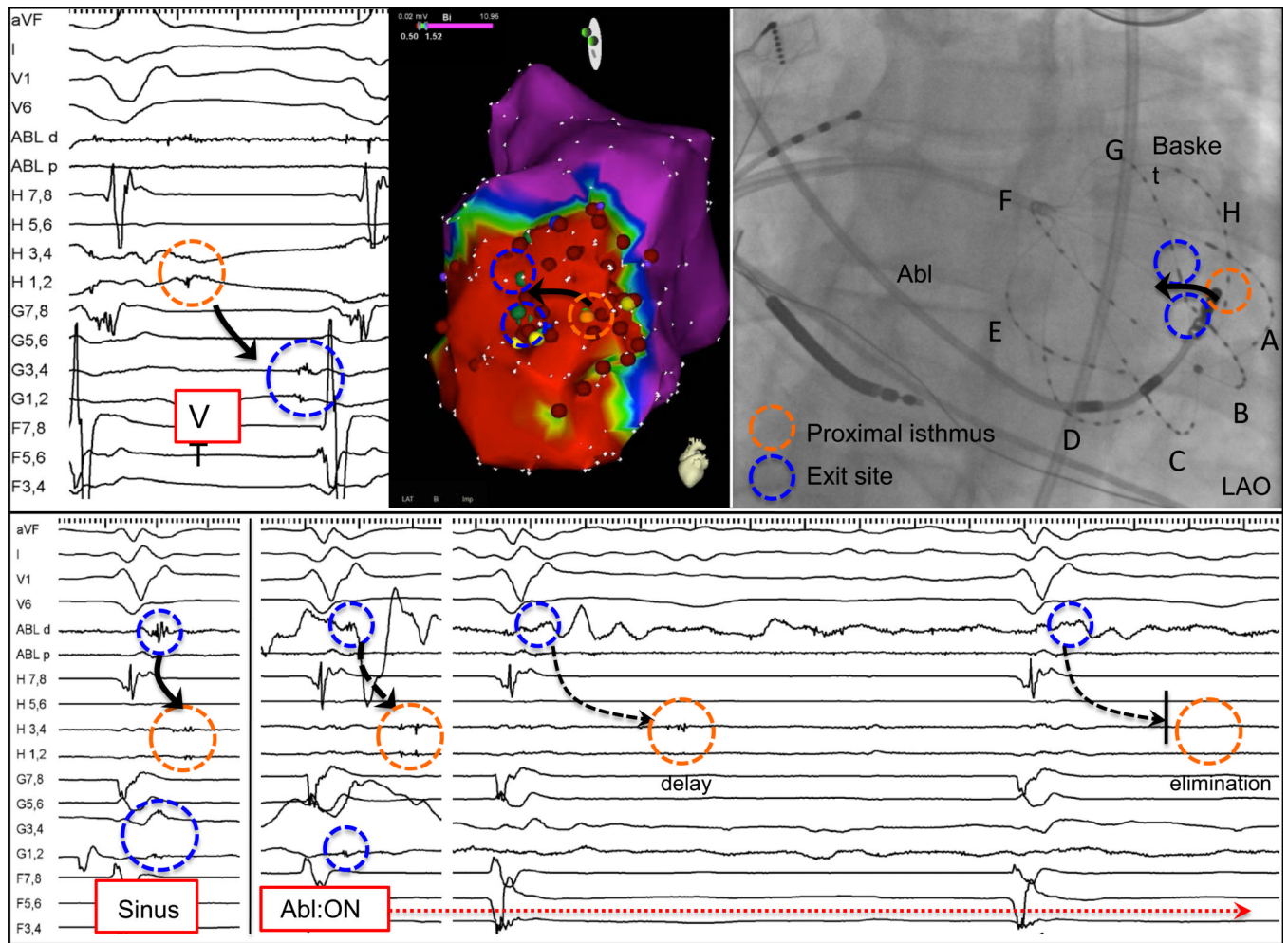


**Figure 2.**

Categorization of the impact of local ablation (elimination of distal ablation electrogram) on neighboring and remote LPs. Local ablation can have no effect, delay, partially eliminate, and completely eliminate spatially distinct areas of late activity. Partial elimination is defined as elimination of the high frequency component of an electrogram within a far field signal.

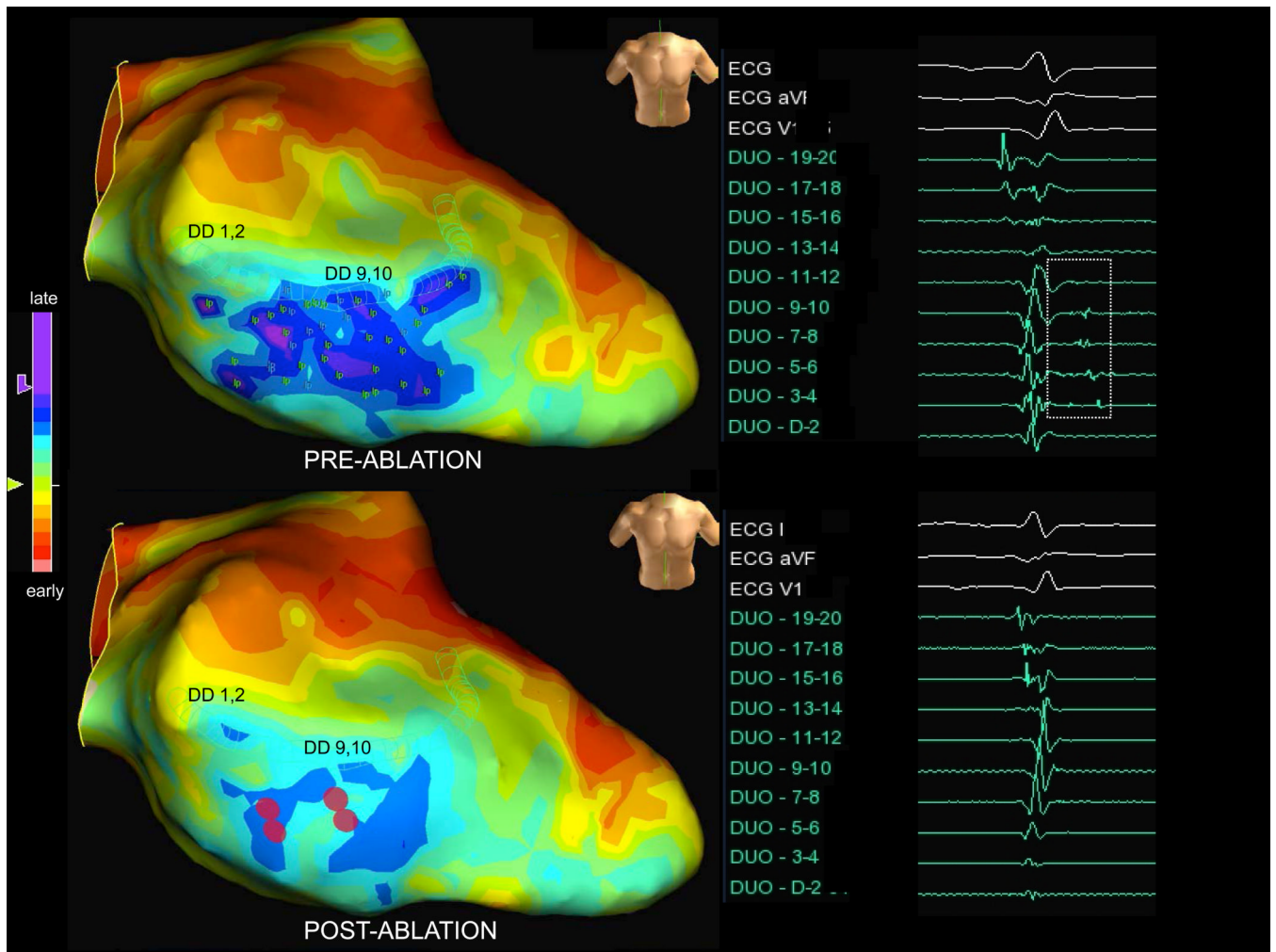


**Figure 3.** Placement of a duodecapolar catheter across a region with multiple LPs in the apical region of anterior infarction. A single RF application targeted at the earliest later potential (9,10) eliminates a gradient of late activation down the channel to 19,20, which is 26 mm away.



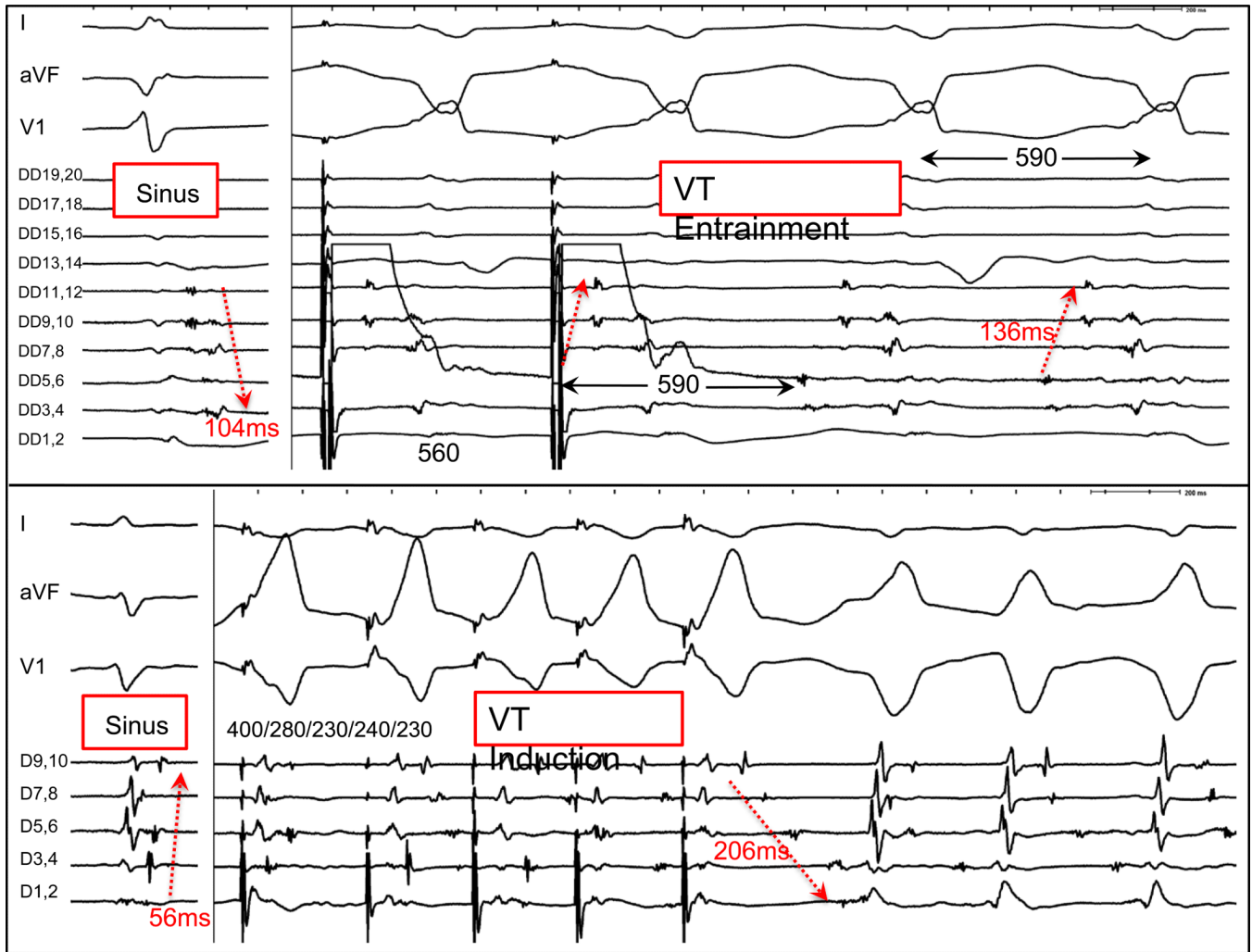
**Figure 4.**

Placement of basket catheter into trauma-induced (stab wound to chest with cardiac perforation) left ventricular apical aneurysm reveals diastolic activation from spline H1-4 (early diastolic) to G1-4 (presystolic). VT was terminated by ablation between these two splines. After termination, sinus rhythm LP activation proceeds from G1-4 to H1-4. A single RF application using retrograde approach magnetic navigation targeted at the earliest LP at G1-4 delays and eliminates H 1-4, which is 15 mm away.



**Figure 5.**

Late activation map display in sinus rhythm within septal scar. A duodecapolar catheter was used to map LPs (lp tags) and the regions of latest activation are displayed as blue and purple. Four ablation lesions (red) applied within scar eliminates all 41 LPs identified, which is confirmed with remapping using the duodecapolar catheter where the latest activation is eliminated postablation



**Figure 6.**

Evidence of interconnected LPs during sinus rhythm and VT in two patients. The first patient (top) had a history of inferolateral myocardial infarction and concealed entrainment is demonstrated from DD 3,4, which is latest in sinus and earliest in VT. The interval between the LPs (red arrows) is longer during VT (136ms) than sinus (104ms). Activation more distally (DD 9-12) is the same pattern during entrainment and VT. In the second patient (lower) with arrhythmogenic right ventricular cardiomyopathy, LPs are seen with a decapolar catheter placed across the epicardial RV outflow tract. During induction of VT with programmed stimulation, activation is reversed and the interval between the LPs (56ms) is significantly prolonged during VT (206ms) with pandiastolic activity recorded. Unidirectional block with emergence of the unopposed orthodromic wavefront is seen with progressive extrastimuli.

**Table 1**

## Patient characteristics

Patient	Age	Sex	Etiology	EF	AAD	Prior ablation	ICD	VT storm
1	74	M	ICM	10	A	no	yes	yes
2	49	M	ICM	20	A/L	no	yes	yes
3	59	M	ICM	35	S	no	yes	no
4	52	M	Noncompaction	25	none	no	yes	yes
5	70	M	ICM	35	M/S	yes	yes	no
6	63	M	ICM	25	no	no	yes	no
7	70	M	ICM	25	A	yes	yes	yes
8	48	M	NICM	30	A/S	yes	yes	no
9	80	M	ICM	20	A	no	yes	yes
10	57	M	ICM	35	none	no	yes	no
11	70	M	ICM	20	A/M	no	yes	yes
12	69	M	ICM	26	A/M	yes	yes	no
13	34	M	Sarcoid	35	S	yes	yes	yes
14	73	M	ICM	30	A	yes	yes	no
15	60	M	Chagas	25	A/M	no	yes	no
16	43	M	ARVC	55	S	yes	yes	no
17	56	M	ICM	25	A/M/S	yes	yes	yes
18	71	M	ICM	20	A	yes	yes	no
19	76	M	ICM	30	A	no	yes	yes
20	68	M	NICM	25	A/M	yes	yes	no
21	51	M	ICM	30	A	no	yes	no

A=amiodarone, S=sotalol, M=mexiletene

Table 2

Electroanatomic mapping and electrophysiological findings

Pt	EAM	Multi-polar	Scar Area (cm <sup>2</sup> )	Scar location	Mapping points	MES/PMI	LP #	Abl #	Target VT (TCL)	VTs induced	VT Term	Acute success	VT recur	Follow-up (mo)
1	CARTO	DD	96	apical/septal	861	no/no	11	4	RBLS (380)	2	yes	non	no	6
2	CARTO	DD	62	inferior	833	no/no	4	2	RBLS (355)	4	yes	flutter	no	11
3	NAVX	DD	57	apical	922	no/no	14	9	RBLS (290)	3	no	non	no	9
4	NAVX	DD	59	epi lateral	531	no/no	33	25	RBRs (290)	1	no	non	no	13
5	NAVX	DD	17	anteroseptal	745	yes/no	41	4	RBRI (320)	4	no	non	no	12
6	CARTO	DD	88	anteroapical	402	yes/yes	36	6	RBLS (300)	1	yes	non	no	18
7	CARTO	Deca	87	inferior epi	721	no/no	10	3	RBRs (340)	1	no	partial	no	21
8	CARTO	Basket	71	anteroapical	328	yes/no	4	3	RBRI (360)	4	yes	non	yes	8
9	CARTO	Basket	64	inferoapical	374	yes/yes	26	25	LBS (360)	4	yes	non	no	7
10	CARTO	DD	18	apical	399	no/no	11	1	non	0	no	non	no	17
11	NAVX	DD	58	apex	815	no/no	12	2	LBI (340)	2	no	non	no	7
12	NAVX	DD	83	anterior	817	yes/yes	23	12	RBLS (440)	4	no	flutter	no	44
13	CARTO	DD	68	basal IL epi	522	no/no	30	10	non	0	no	non	no	11
14	NAVX	DD	51	epi basal IL	1157	yes/no	24	14	RBRI (530)	2	yes	non	no	30
15	NAVX	DD	22	epi inferoapex	2890	no/no	22	6	RBRI (400)	3	no	non	no	1
16	CARTO	Deca	40	epi RVOT	430	yes/no	32	11	LBI (320)	1	yes	non	no	1
17	NAVX	DD	39	epi IL	185	yes/yes	39	26	RBRI (540)	1	yes	non	yes	2
18	NAVX	DD	70	endo IL	417	yes/yes	18	7	RBRs (585)	3	yes	no	no	46
19	CARTO	DD	55	septal	614	yes/no	37	16	LBLS (360)	3	yes	non	no	2
20	NAVX	DD	86	epi-anteroapical	583	no/no	15	5	RBI (330)	1	no	non	no	24
21	CARTO	Deca	127	epi inferolat	1309	yes/yes	42	14	RBLI (420)	3	yes	failure	yes	1