

**Twin studies reveal specific imbalances in the mucosa-associated microbiota of patients with ileal Crohn's disease**

Short title: Mucosal microbiota of Crohn's twins

Ben Willing,<sup>\*†</sup>, PhD, Jonas Halfvarson,<sup>‡†</sup>, MD PhD, Johan Dicksved,<sup>\*</sup>, PhD, Magnus Rosenquist,<sup>\*</sup>, PhD, Gunnar Järnerot,<sup>‡</sup>, MD PhD, Lars Engstrand,<sup>||</sup>, MD PhD, Curt Tysk<sup>¶||</sup>, MD PhD, and Janet K Jansson<sup>\*\*\*††</sup>, PhD

<sup>\*</sup> Swedish University of Agricultural Sciences, Department of Microbiology, Uppsala, Sweden

<sup>‡</sup> Division of Gastroenterology, Department of Medicine, Örebro University Hospital, Örebro, Sweden.

<sup>§</sup> Department of Oncology, Radiology and Clinical Immunology, Uppsala University Hospital, Uppsala, Sweden

<sup>||</sup> Swedish Institute for Infectious Disease Control, Department of Bacteriology, Solna, Sweden

<sup>¶</sup> School of Health and Medical Sciences, Örebro University, Örebro, Sweden.

<sup>\*\*6</sup> Lawrence Berkeley National Laboratory, Earth Sciences Division, Berkeley, CA

<sup>†</sup> Authors contributed equally to this work

<sup>††</sup> Corresponding author: Janet K. Jansson, Lawrence Berkeley National Laboratory, Earth Sciences Division, 1 Cyclotron Road, MS 70A-3317D, Berkeley, CA 94720 USA, Phone number: +1 (510) 486-7487, Email: [jrjansson@lbl.gov](mailto:jrjansson@lbl.gov)

Sources of support: This project was funded by the Örebro University Hospital Research Foundation, Örebro County Research Foundation, Bengt Ihre's Foundation, the Uppsala BioX Micprof project, the Swedish University of Agricultural sciences and, in part, by the U.S. Department of Energy Contract DE-AC02-05CH11231 with Lawrence Berkeley National Laboratory.

Figures: 2

Tables: 2

## ABSTRACT AND KEY WORDS

Large inter-individual variation in the composition of the intestinal microbiota between unrelated individuals has made it challenging to identify specific aspects of dysbiosis that lead to Crohn's disease. To reduce variations in exposure during establishment of the gut flora and influence of genotype, we studied the mucosa-associated microbiota of monozygotic twin pairs that were discordant (n=6) or concordant (n=4) for Crohn's disease. DNA was extracted from biopsies collected from 5 locations between the ileum and rectum. Bacterial 16S ribosomal RNA genes were amplified and community composition assessed by terminal-restriction fragment length polymorphism, cloning and sequencing and quantitative real-time PCR. The microbial compositions at all biopsy locations for each individual were similar, regardless of disease state, but there were differences between individuals. In particular, individuals with predominantly ileal Crohn's had a dramatically lower abundance ( $P<0.001$ ) of *Faecalibacterium prausnitzii* and increased abundance ( $P<0.03$ ) of *Escherichia coli* compared to healthy co-twins and those with Crohn's localized in the colon. This dysbiosis was significantly correlated to the disease phenotype rather than genotype. The reduced abundance of *F. prausnitzii* and increased abundance of *E. coli* are indicative of an ileal Crohn's disease phenotype, distinct from colonic Crohn's disease and the relative abundances of these specific bacterial populations are promising biomarker candidates for differential diagnosis of Crohn's and eventually customized treatment.

Key Words: Monozygotic discordant twins; ileal Crohn's disease; *Faecalibacterium prausnitzii*; *Escherichia coli*; mucosa-associated microbiota

## INTRODUCTION

Defining the etiology of Crohn's disease (CD) has proven difficult due to the complicated interplay of environmental and genetic factors leading to disease development. Increasing evidence suggests that CD is ultimately the result of a breakdown in the détente relationship between commensal bacteria in the intestine and the host immune system.<sup>1,2</sup> A disease concordance rate of approximately 50% in monozygotic twins<sup>3</sup> identifies genetics as a major contributing factor towards CD development. However, an equal discordance rate in monozygotic twins<sup>3</sup> points to the importance of environmental factors, including the composition of the intestinal microbiota.

The current hypothesis is that sufficient antigenic stimulation to cause disease is provided by an imbalance of beneficial and detrimental commensal organisms or 'dysbiosis'.<sup>4-6</sup> Recent reports indicate increased abundances of *Bacteroides*<sup>7</sup> and *Enterobacteriaceae*,<sup>8-10</sup> particularly *Escherichia coli*,<sup>11</sup> and a reduction in microbial diversity<sup>12-14</sup> in CD. However, no single bacterial species has been convincingly indicated as a biomarker of CD to date. Since host genotype plays a substantial role in shaping microbial population, as evidenced by similarities in monozygotic twins,<sup>15-17</sup> it is unclear whether microbial imbalance is associated with host genotype or disease. This can be clarified by studying monozygotic twin pairs that are discordant (one is healthy and one is sick) for disease.

The mucosal microbiota differs from that of the digesta,<sup>18,19</sup> and is of particular interest because the mucosal surface is the site of microbial recognition by the host that if improperly regulated could lead to the inflammatory responses typical of CD.<sup>20,21</sup> Therefore, we studied biopsy samples collected at colonoscopy from previously studied monozygotic twin pairs<sup>22</sup> that were either discordant or concordant for CD. Our hypothesis was that studying discordant monozygotic twins in depth

using a combination of molecular approaches would facilitate the identification of specific bacteria that are correlated with CD incidence rather than host genotype, including those not yet cultivated.

## **MATERIALS AND METHODS**

### **Human subjects**

A total of 10 monozygotic twin pairs obtained from a previously described Swedish twin population<sup>3</sup> were studied: 2 pairs discordant for predominantly ileal Crohn's (ICD), 4 pairs discordant for predominantly colonic Crohn's (CCD), 2 pairs concordant for ICD, and 2 pairs concordant for CCD. Table 1 summarizes relevant clinical data for patients and responses to a questionnaire regarding the usage of antibiotics, non-steroidal anti-inflammatory drugs within the preceding 12 months, gastroenteritis within the last 3 months and specific dietary habits that have been previously reported.<sup>22</sup> Subjects were born between 1936 and 1986 with patient groups, as defined by disease status, being similar in age (mean±SD) CCD 49.0±18.5 (n=8), healthy (HC) 52.8±17.2 (n=6), ICD 50.8±4.5 (n=6). According to Harvey Bradshaw score,<sup>23</sup> all individuals were in remission with the exception of two (10b and 15a), who previously had undergone ileocecal resection. However, none of these had postoperative recurrence, endoscopic recurrence score <2,<sup>24</sup> at colonoscopy, strongly suggesting that their Harvey Bradshaw score reflected a co-existing functional disorder or possibly bile acid malabsorption and not active CD. The use of human subjects for this study was approved by the Örebro County Ethical Committee (Dnr167/03).

### **Biopsy collection**

Patients received standard bowel cleansing with the polyethylene glycol preparation, Laxabon® (BioPhausia, Stockholm, SE), the evening before colonoscopy. Biopsies

were taken from distal ileum, ascending, transverse and descending colon and rectum, if technically possible. Two biopsies were collected from each location in each subject, using disposable biopsy forceps (Olympus, Center Valley, PA). Biopsies were immediately placed in 0.5 ml freezing buffer (5 mM K<sub>2</sub>HPO<sub>4</sub>, 1.3 mM KH<sub>2</sub>PO<sub>4</sub>, 2 mM Na<sub>3</sub>C<sub>6</sub>H<sub>5</sub>O<sub>7</sub>, 1mM MgSO<sub>4</sub>x7H<sub>2</sub>O and 17.2% glycerol), in CryoPlus tubes (Sarstedt AG & Co, Germany), frozen on dry ice, and stored at -70°C.

### **DNA extraction**

Biopsies were thawed on ice and centrifuged at 15000 x g for 5 min. Freezing buffer was removed by aspiration and DNA was isolated from the entire biopsy using the QIAamp<sup>®</sup> DNA Mini Kit (Qiagen Inc., Hilden, Germany). Extraction was performed according to the manufacturer's instructions, with the addition of two 45 s bead-beating steps at level 5 on a FastPrep<sup>®</sup>-24 (MP Biomedicals, Solon, OH) at the beginning of the protocol.

### **Terminal-restriction fragment length polymorphism (T-RFLP)**

To obtain a profile of mucosa-associated bacteria, the total extracted DNA from each biopsy was analyzed by T-RFLP using a protocol previously developed for DNA extracted from faeces.<sup>22</sup> Briefly, bacterial 16S rRNA genes were specifically amplified by PCR using broad-range bacterial primers Bact-8F,<sup>25</sup> 5'-end labeled with 6-carboxyfluorescein, and 926r<sup>26</sup> (Table 2). Resulting PCR products were digested with

*Hae*III (New England BioLabs, Ipswich, MA) and separated on an ABI 3730 capillary sequencer (Applied Biosystems, Foster City, CA). Electrophoregrams were processed using Peak Scanner v1.0 (Applied Biosystems) and relative peak areas of terminal restriction fragments (TRFs) corresponding to sizes between 50 and 500 bp were calculated by dividing individual peak area by total peak area within this size

constraint. Only peaks above a threshold of 0.5% were included in further analyses. A minimum threshold of  $10^4$  16S rRNA gene copies, as measured by qPCR (see below), was set to avoid bias due to low total abundance.

### **Cloning and sequencing**

16S rRNA genes were cloned from selected DNA samples (11a, 11b, 13a and 13b) to aid in the identification of bacteria corresponding to TRF sizes of interest based on the analysis of T-RFLP data. Extracted DNA samples were amplified using primers Bact-8F and 926r.<sup>25,26</sup> PCR products were gel purified (Qiagen), cloned into TOPO TA pCR 4.0 vector (Invitrogen, Carlsbad, CA) and transformed into *E. coli* TOP 10 chemically competent cells (Invitrogen). Transformants were screened by PCR amplification with M13 primers (Invitrogen) and appropriate PCR product sizes were determined by agarose gel electrophoresis. The resulting PCR products were then analyzed by T-RFLP as described above and products that resulted in TRF lengths corresponding to peaks of interest were sequenced. Sequences obtained were subjected to phylogenetic assignment using RDP's Naïve Bayesian rRNA Classifier Version 2.0. Unique sequences were deposited to Genbank at NCBI under accession numbers EU668957 to EU668961.

### **Quantitative real-time PCR (qPCR)**

All qPCR assays were performed in duplicate 25  $\mu$ l reactions in 96-well plates using an iQ<sup>TM</sup>5 Real-time Detection System (BioRad, Hercules, CA). Total 16S rRNA gene copies for bacteria were determined for each sample with the general bacterial primers (Table 2) using iQ<sup>TM</sup> supermix (Biorad). Human cell numbers were determined for biopsies from the ileum and descending colon using self designed primers specific for the  *$\beta$ -globin* gene (Table 2), that were designed using MacVector 9.5.4 (Accelrys Software, Inc., San Diego CA). 16S rRNA gene copies for the

specific bacterium, *Faecalibacterium prausnitzii*, were also determined using specific primers (Table 2). *E. coli* was quantified using self-designed primers that amplify *uidA* (Table 2), encoding  $\beta$ -glucuronidase, which is specific to *E. coli* and *Shigella*. Specificity to *E. coli* was confirmed by negative PCR for *Shigella* specific *ipaH*.<sup>29</sup> qPCR assays for  $\beta$ -globin, *uidA* and *F. prausnitzii* were performed using SYBR<sup>®</sup>GreenER<sup>™</sup> qPCR Supermix for iCycler<sup>®</sup>(Invitrogen). Resulting melting curves were visually inspected to ensure specificity of product detection. For quantification of target DNA copy number, standard curves were generated for each gene of interest using gel extracted PCR products quantified using a Qubit<sup>™</sup> Fluorometer (Invitrogen).

### **Statistical analysis**

To assess the diversity of the microbial community, defined by evenness and richness of TRFs, Simpson's index of diversity<sup>30</sup> was applied to the T-RFLP data. Similarity indices were calculated within individuals, comparing each location to the consensus of all locations, using Manhattan metrics<sup>31</sup>. Differences between discordant twins were calculated using Manhattan metrics and significance tested by ANOVA (SPSS, Chicago, IL). qPCR data and abundance data for individual TRFs were analyzed as a one-way ANOVA using the general linear model (SPSS). Group means were separated by REGWF with significance of  $P < 0.05$ . Correlation coefficients were calculated using the Pearson Correlation Procedure (SPSS).

## **RESULTS**

### **Mucosa-associated community profiles**

Of the 94 biopsies collected, 8 (3 CCD, 2 ICD, 3 HC) were not included in T-RFLP analysis because of low bacterial numbers in those samples ( $< 10^4$  16S rRNA gene copies). However, a minimum of 3 biopsies was included from each subject for



further analyses. A total of 111 TRFs, representing different ribotypes, were found in the 20 individuals studied. The average number of TRFs $\pm$ SE, per biopsy was 28.2 $\pm$ 2.94, 27.4 $\pm$ 1.67 and 23.6 $\pm$ 5.99 for CCD, HC and ICD respectively.

### **Microbial Density**

Bacterial numbers were not affected by disease phenotype ( $P=0.376$ ) or sample location ( $P=0.295$ ). Mean 16S rRNA gene copy numbers per copy  $\beta$ -globin $\pm$ SE were 35.5 $\pm$ 15.6 and 25.2 $\pm$ 15.3 for CCD, 27.4 $\pm$ 15.7 and 11.4 $\pm$ 5.7 for HC, 17.0 $\pm$ 10.3 and 10.6 $\pm$ 5.3 for ICD, for the ileum and distal colon respectively.

### **Diversity**

Microbial diversity (mean $\pm$ SE), measured as a combination of TRF richness and evenness, was lower ( $P<0.004$ ) in individuals with ICD (0.798 $\pm$ 0.05) than those with CCD (0.850 $\pm$ 0.010) or HC (0.877 $\pm$ 0.018). This result may be confounded by surgery, however the microbial diversity in CCD individuals who had undergone surgery was not different ( $P=0.67$ ) from CCD individuals who had not undergone surgery.

### **Consistency between locations**

Cluster analysis of T-RFLP profiles, using Bray Curtis metrics, showed that the microbial compositions in samples collected from an individual grouped together, regardless of biopsy location (Figure 1). Similarity scores for biopsies, using the Manhattan index, as compared to the mean of all biopsies within an individual were generally higher than 80% with an average of 88.5%. No difference in the microbial community structures at the different sampled locations within individuals was observed in the different sampled groups ( $P=0.25$ ); with similarity scores (mean $\pm$ SE): HC (86.0 $\pm$ 5.3), ICD (88.8 $\pm$ 3.3) and CCD (90.3 $\pm$ 1.7) groups.

### **Similarity between twins**

The average microbial community structures from all biopsy locations for each individual were compared between matched twin pairs. The discordant twin pairs, with ICD, had lower similarity scores (36-53%), measured using abundance data (Manhattan index), compared to the discordant twins with CCD (52-66%). This was also reflected in lower average similarities between concordant twins pairs with ICD (48-62%) compared to concordant twins with CCD (56-67%). These data show a trend ( $P<0.07$ ) for individuals with ICD to be less similar to their twin than CCD individuals, however concordant twins were not more similar ( $P=0.29$ ) than discordant twins.

### **Phenotypic differences in mucosa-associated microbiota**

#### *Faecalibacterium prausnitzii*

Analysis of T-RFLP data identified TRF223 to be abundant in all HC and CCD individuals, but scarce or absent in subjects with ICD. This TRF corresponded to *Faecalibacterium prausnitzii* (98.2-99.5% similarity) based on screening of 16S rRNA gene clone sequences obtained from the same individuals. It was noteworthy that all sequences were more similar to uncultured clones deposited in databases than to the cultured *F. prausnitzii* type strain.

We found that *F. prausnitzii*, measured by qPCR as a percent of total 16S rRNA genes (Figure 2A), was dramatically lower in individuals with ICD ( $P<0.001$ ) than those with CCD or HC, with respective values of (mean $\pm$ SE) 0.4 $\pm$ 0.89 (ICD), 11.3 $\pm$ 3.36 (CCD) and 8.7 $\pm$ 2.49 (HC). Discordant ICD twins (pairs 16 and 18) segregated to disease phenotype rather than twin pair for *F. prausnitzii* abundance.

#### *Escherichia coli*

We designed novel primers targeting the *uidA* gene for specific quantitation of *Escherichia coli* by real-time PCR (Figure 2B). *E. coli* was significantly more

abundant ( $P < 0.03$ ) in biopsies at all locations from ICD patients than in HC or those with CCD. In 8 of 9 positive diseased individuals, whether CCD or ICD, when *E. coli* was present at detectable levels it was found at all locations (1.3-4.5 log *uidA* per  $10^6$  16S rRNA genes). *E. coli* was also detected in some healthy individuals (11b, 12a, and 14a) however, only in a maximum of 2 locations, and at a level of 1.2-2.5 log *uidA* per  $10^6$  16S rRNA genes. However, in one pair of ICD concordant twins (pair 10) *E. coli* was only detected in one of the individuals, but at all locations. Similar to the situation we observed for *F. prausnitzii*, the discordant twins with one individual having CD localized in the ileum, segregated according to disease phenotype rather than twin pair with respect to *E. coli* abundance.

## **DISCUSSION**

It is known that the host genotype partly determines the microbial community composition in the human gut.<sup>15-17</sup> Therefore, our hypothesis was that by studying the mucosa-associated microbiota of identical twins it would be easier to untangle the respective contributions of host genetics and intestinal bacteria towards CD etiology. We found that discordant ICD twins segregated according to their disease phenotype rather than twin pair with respect to the abundance of some specific bacterial populations. These results suggest that the bacterial composition in the intestine is associated with disease rather than host genotype.

We used two molecular approaches to quantify the abundance of specific bacterial populations in the biopsy samples. Both T-RFLP and qPCR approaches provided significant indications that specific bacterial species were more or less abundant in individuals with ICD compared to CCD or healthy individuals. In particular, TRF223, corresponding to *F. prausnitzii*, was abundant in all HC and CCD individuals, but scarce or absent in subjects with ICD. We previously detected the

same TRF in faecal samples collected from 21 out of 22 healthy individuals; including some of the same individuals included in the present study<sup>22</sup> and in 89 out of 90 healthy children in a separate study,<sup>32</sup> but at that time we did not have the sequence data to match this TRF to a particular species. The abundant and consistent presence of *F. prausnitzii* in healthy individuals suggests that it is an important member of the mucosal microbiota. *F. prausnitzii* produces butyrate, formate and D-lactate as a product of fermentation,<sup>33</sup> providing the major energy source for colonic epithelial cells and having effects on epithelial barrier integrity and immune modulation.<sup>34,35</sup> The functional activity of *F. prausnitzii* in affecting host physiology was recently demonstrated by Li et al.,<sup>36</sup> where they showed that its population variation was associated with eight urinary metabolites of diverse structure including butyrate isoforms. The loss of *F. prausnitzii*, and thus reduced butyrate production may trigger gut inflammation in genetically susceptible individuals. The absence of this organism may also leave a gap that can be filled by other organisms resulting in a less stable population.

Using qPCR the abundance of *F. prausnitzii* was confirmed to be significantly lower in all biopsies collected from ICD patients, compared to healthy controls and those with disease location in the colon. Recently *Faecalibacteria* and *Subdoligranula* were found to represent a combined total of 0.4%, 15% and 26% of bacterial 16S rRNA gene clones from ileal biopsies in ICD, healthy controls and CCD subjects respectively.<sup>11</sup> Martinez-Medina et al.<sup>37</sup> also observed *F. prausnitzii* more frequently in healthy (87%) compared to CD (53%) subjects, however they did not separate CD phenotypes in their analysis or compare abundance data. Vasquez et al.<sup>20</sup> detected *F. prausnitzii* by FISH in only 5 of 22 CD patients that had undergone ileal resection, and at low levels ( $1.8 \pm 0.5\%$ ) in positive individuals. Additional reports of reduced

abundance and diversity of *Firmicutes*,<sup>12,13</sup> particularly from the *Clostridium leptum* group of which *F. prausnitzii* is a member,<sup>38</sup> coincide with our findings, however, *F. prausnitzii* was not specifically mentioned in those studies.

Swidsinski et al.<sup>39</sup> recently reported that low faecal levels of *F. prausnitzii*, along with faecal leukocyte counts, differentiated active CD from UC. Although they did not indicate disease location in CD patients, they found that treatment with high-dose cortisol therapy or infliximab restored *F. prausnitzii* levels indicating that this bacterium is being suppressed by the host immune system.<sup>39</sup> Intriguingly, all enrolled twins were in endoscopic remission, yet differences in *F. prausnitzii* were observed in ICD.

Another bacterial population that differentiated according to disease phenotype was *E. coli*. Increased abundance of *E. coli* in biopsies from CD patients has previously been reported.<sup>8-10,12</sup> However, our study and one other<sup>11</sup> identify a particular increase in *E. coli* levels in subjects with ICD, compared to HC. We found a consistent presence of *E. coli* in CD patients, spanning from the ileum to the rectum. Previously, an increased *E. coli* abundance in rectum biopsies was found in CD patients.<sup>40</sup> Although the *E. coli* were not isolated and typed in this experiment, *E. coli* isolated from CD biopsies in previous studies<sup>8,11</sup> have shown pathogen-like behaviour in vitro, including survival within macrophages, and may play a role in the inflammatory process.<sup>41</sup> Reduced production of  $\alpha$ -defensins and reduced antimicrobial activity against *E. coli* has been observed in ICD but not CCD as compared to healthy mucosa.<sup>42</sup> This phenomenon would directly explain increased *E. coli* abundance in ICD observed in this and another study.<sup>11</sup> Intriguingly, butyrate induces the expression of some anti-microbial peptides,<sup>43</sup> thus a reduced abundance of

butyrate producing *F. prausnitzii* may ultimately result in reduced secretion of anti-microbial peptides and proteins allowing *E. coli* to proliferate.

We were unable to identify any TRFs that clearly differentiated CCD individuals from HC, although there were a few TRFs that were more common in CCD than HC and ICD. However, an increasing number of reports have indicated differences between ICD and CCD phenotypes, including beneficial effects of antibiotic therapy in CCD, but not ICD.<sup>44,45</sup> The reduced effectiveness of antibiotic therapy in ICD has not been explained, however may be a result of the differences in microbial composition in these two disease phenotypes, and the intracellular localization of *E. coli* within macrophages.<sup>46</sup> When we previously studied faecal samples from these subjects, we observed that community profiles of twins with CCD were similar to those of healthy individuals, while those with ileal involvement separated from the others.<sup>22</sup>

The consistency of the bacterial composition along the intestinal tract in each individual, ranging from the distal ileum to the rectum, suggests that dysbiosis associated with CD is not localized to the area of disease. This consistency between locations regardless of disease phenotype confirms previous reports in healthy and IBD individuals.<sup>19,37,47</sup>

Reduced bacterial diversity in CD individuals compared to their healthy co-twins agrees with numerous other reports in non twin populations,<sup>12-14,48,49</sup> but this is the first finding that specifically points to a lower diversity for a specific disease phenotype (i.e. ICD). Reports of increased bacterial numbers associated with biopsies from CD patients as compared to healthy controls have been inconsistent.<sup>47,50,51</sup> We did not observe any differences in bacterial numbers associated with disease phenotype, however, this may be due to the nature of the control patients, as

individuals related to IBD patients may also have disrupted mucosal surfaces although they do not suffer from disease.<sup>52,53</sup>

We acknowledge that these results are subject to biases inherent in PCR amplification and that we may have missed differences in some members of the microbial community, however, biases were consistent in all groups. In this investigation we studied patients who were in remission and not diseased, although the gut microbiota is altered in a diseased compared to a quiescent state.<sup>48</sup> Confounding factors including surgery and medication in ICD may also give rise to some skepticism, however similar surgeries were performed in individuals with CCD (12b and 13a), which had normal levels of *F. prausnitzii* and an absence of *E. coli*. Frank et al.<sup>51</sup> also found that appendectomy was not correlated with the subsequent microbial composition in colonic biopsies of IBD patients.

In conclusion we identified specific bacterial species that are significantly increased or decreased in abundance in individuals with Crohn's disease in the ileum, compared to individuals with CD in the colon and to healthy individuals. Specifically, we propose that lower amounts of *F. prausnitzii* and higher amounts of *E. coli* are indicative of ileal CD and can be used to distinguish the ileal disease phenotype from colonic CD and from healthy individuals. The data from discordant twins indicate that the host genotype is not solely responsible for the observed differences in the gut microbiota, but instead support the hypothesis that ICD and CCD are different subgroups of the disease. Therefore, we propose that the relative abundances of *F. prausnitzii* and *E. coli* can serve as indicators to distinguish Crohn's disease phenotype, and may eventually support customized treatment.

### **Acknowledgements**

This project was funded by the Örebro University Hospital Research Foundation, Örebro County Research Foundation, Bengt Ihre's Foundation, the Uppsala BioX Micprof project, the Swedish University of Agricultural sciences and, in part, by the U.S. Department of Energy Contract DE-AC02-05CH11231 with Lawrence Berkeley National Laboratory. We thank Kerstin Eriksson for her assistance with collection of biological material.



## REFERENCES

1. Hanauer SB. Inflammatory bowel disease: Epidemiology, pathogenesis, and therapeutic opportunities. *Inflamm Bowel Dis*. 2006;12:S3-S9.
2. Sartor RB. Mechanisms of disease: pathogenesis of Crohn's disease and ulcerative colitis. *Nature Clin Prac Gastroenterol Hepatol*. 2006;3:390-407.
3. Halfvarson J, Bodin L, Tysk C, et al. Inflammatory bowel disease in a Swedish twin cohort: a long-term follow-up of concordance and clinical characteristics. *Gastroenterology*. 2003;124:1767-73.
4. Sartor RB. Microbial influences in inflammatory bowel diseases. *Gastroenterology*. 2008;134:577-594.
5. Tamboli CP, Neut C, Desreumaux P, et al. Dysbiosis in inflammatory bowel disease. *Gut*. 2004;53:1-4.
6. Seksik P, Sokol H, Lepage P, et al. Review article: the role of bacteria in onset and perpetuation of inflammatory bowel disease. *Aliment Pharmacol Therapeut*. 2006;24:11-18.
7. Mangin I, Bonnet R, Seksik P, et al. Molecular inventory of faecal microflora in patients with Crohn's disease. *FEMS Microbiol Ecol*. 2004;50:25-36.
8. Darfeuille-Michaud A, Boudeau J, Bulois P, et al. High prevalence of adherent-invasive *Escherichia coli* associated with ileal mucosa in Crohn's disease. *Gastroenterology*. 2004;127:412-421.
9. Kotlowski R, Bernstein CN, Sepehri S, et al. High prevalence of *Escherichia coli* belonging to the B2+D phylogenetic group in inflammatory bowel disease. *Gut*. 2007;56:669-675.

10. Sasaki M, Sitaraman SV, Babbin BA, et al. Invasive *Escherichia coli* are a feature of Crohn's disease. *Lab Invest.* 2007;87:1042-1054.
11. Baumgart M, Dogan B, Rishniw M, et al. Culture independent analysis of ileal mucosa reveals a selective increase in *Escherichia coli* of novel phylogeny relative to depletion of Clostridiales in Crohn's disease involving the ileum. *ISME J.* 2007:1-16.
12. Gophna U, Sommerfeld K, Gophna S, et al. Differences between tissue-associated intestinal microfloras of patients with Crohn's disease and ulcerative colitis. *J Clin Microbiol.* 2006;44:4136-4141.
13. Manichanh C, Rigottier-Gois L, Bonnaud E, et al. Reduced diversity of faecal microbiota in Crohn's disease revealed by a metagenomic approach. *Gut.* 2006;55:205-211.
14. Scanlan PD, Shanahan F, O'Mahony C, et al. Culture-independent analyses of temporal variation of the dominant fecal microbiota and targeted bacterial subgroups in Crohn's disease. *J Clin Microbiol.* 2006;44:3980-3988.
15. Stewart JA, Chadwick VS, Murray A. Investigations into the influence of host genetics on the predominant eubacteria in the faecal microflora of children. *J Med Microbiol.* 2005;54:1239-1242.
16. Vandemerwe JP, Stegeman JH, Hazenberg MP. The Resident Fecal Flora Is Determined by Genetic-Characteristics of the Host - Implications for Crohn's Disease. *J Microbiol.* 1983;49:119-124.
17. Zoetendal EG, Akkermans ADL, Akkermans-van Vliet WM, et al. The host genotype affects the bacterial community in the human gastrointestinal tract. *Microb Ecol Health Dis.* 2001;13:129-134.

18. Lepage P, Seksik P, Sutren M, et al. Biodiversity of the mucosa-associated microbiota is stable along the distal digestive tract in healthy individuals and patients with IBD. *Inflamm Bowel Dis.* 2005;11:473-80.
19. Zoetendal EG, von Wright A, Vilpponen-Salmela T, et al. Mucosa-associated bacteria in the human gastrointestinal tract are uniformly distributed along the colon and differ from the community recovered from feces. *Appl Environ Microbiol.* 2002;68:3401-3407.
20. Vasquez N, Mangin I, Lepage P, et al. Patchy distribution of mucosal lesions in ileal Crohn's disease is not linked to differences in the dominant mucosa-associated bacteria: A study using fluorescence in situ hybridization and temporal temperature gradient gel electrophoresis. *Inflamm Bowel Dis.* 2007;13:684-692.
21. Eckburg PB, Relman DA. The role of microbes in Crohn's disease. *Clin Infect Dis.* 2007;44:256-262.
22. Dicksved J, Halfvarson J, Rosenquist M, et al. Molecular analysis of the gut microbiota of identical twins with Crohn's disease. *ISME J.* 2008.
23. Harvey RF, Bradshaw JM. A simple index of Crohn's-disease activity. *Lancet.* 1980;1:514.
24. Rutgeerts P, Geboes K, Vantrappen G, et al. Predictability of the postoperative course of Crohn's-disease. *Gastroenterology.* 1990;99:956-963.
25. Edwards U, Rogall T, Blocker H, et al. Isolation and direct complete nucleotide determination of entire genes. Characterization of a gene coding for 16S ribosomal RNA. *Nucleic Acids Res.* 1989;17:7843-53.

26. Muyzer G, de Waal EC, Uitterlinden AG. Profiling of complex microbial populations by denaturing gradient gel electrophoresis analysis of polymerase chain reaction-amplified genes coding for 16S rRNA. *Appl Environ Microbiol.* 1993;59:695-700.
27. Nadkarni MA, Martin FE, Jacques NA, et al. Determination of bacterial load by real-time PCR using a broad-range (universal) probe and primers set. *Microbiol.* 2002;148:257-66.
28. Ahmed S, Macfarlane GT, Fite A, et al. Mucosa-associated bacterial diversity in relation to human terminal ileum and colonic biopsy samples. *Appl Environ Microbiol.* 2007;73:7435-7442.
29. Martin HM, Campbell BJ, Hart CA, et al. Enhanced *Escherichia coli* adherence and invasion in Crohn's disease and colon cancer. *Gastroenterology.* 2004;127:80-93.
30. Begon M, Harper J, Townsend C. *Ecology: from individuals to ecosystems.* 4th ed. Oxford: Blackwell; 2006:471-472.
31. Legendre P, Legendre L. *Numerical Ecology.* 2nd English ed. Amsterdam: Elsevier Science; 1998.
32. Dicksved J, Floistrup H, Bergstrom A, et al. Molecular fingerprinting of the fecal microbiota of children raised according to different lifestyles. *Appl Environ Microbiol.* 2007;73:2284-2289.
33. Duncan SH, Hold GL, Harmsen HJM, et al. Growth requirements and fermentation products of *Fusobacterium prausnitzii*, and a proposal to reclassify it as *Faecalibacterium prausnitzii*. *Int J Syst Evol Microbiol.* 2002;52:2141-2146.

34. Pryde SE, Duncan SH, Hold GL, et al. The microbiology of butyrate formation in the human colon. *FEMS Microbiol Lett.* 2002;217:133-139.
35. Scheppach W, Weiler F. The butyrate story: old wine in new bottles? *Curr Opin Clin Nutr Metabol Care.* 2004;7:563-567.
36. Li M, Wang B, Zhang M, et al. Symbiotic gut microbes modulate human metabolic phenotypes. *Proc Natl Acad Sci USA.* 2008.
37. Martinez-Medina M, Aldeguer X, Gonzalez-Huix F, et al. Abnormal microbiota composition in the ileocolonic mucosa of Crohn's disease patients as revealed by polymerase chain reaction-denaturing gradient gel electrophoresis. *Inflamm Bowel Dis.* 2006;12:1136-1145.
38. Sokol H, Seksik P, Rigottier-Gois L, et al. Specificities of the fecal microbiota in inflammatory bowel disease. *Inflamm Bowel Dis.* 2006;12:106-111.
39. Swidsinski A, Loening-Baucke V, Vaneechoutte M, et al. Active Crohn's disease and ulcerative colitis can be specifically diagnosed and monitored based on the biostructure of the fecal flora. *Inflamm Bowel Dis.* 2008;14:147-161.
40. Mylonaki M, Rayment NB, Rampton DS, et al. Molecular characterization of rectal mucosa-associated bacterial flora in inflammatory bowel disease. *Inflamm Bowel Dis.* 2005;11:481-7.
41. Barnich N, Darfeuille-Michaud A. Adherent-invasive *Escherichia coli* and Crohn's disease. *Curr Opin Gastroenterol* 2007;23:16-20.
42. Wehkamp J, Salzman NH, Porter E, et al. Reduced paneth cell alpha-defensins and antimicrobial activity in ileal Crohn's disease. *Inflamm Bowel Dis.* 2006;12:S20-S20.

43. Hase K, Eckmann L, Leopard JD, et al. Cell differentiation is a key determinant of cathelicidin LL-37/human cationic antimicrobial protein 18 expression by human colon epithelium. *Infect Immun.* 2002;70:953-63.
44. Steinhart AH, Feagan BG, Wong CJ, et al. Combined budesonide and antibiotic therapy for active Crohn's disease: a randomized controlled trial. *Gastroenterology* 2002;123:33-40.
45. Greenbloom SL, Steinhart AH, Greenberg GR. Combination ciprofloxacin and metronidazole for active Crohn's disease. *Can J Gastroenterol* 1998;12:53-56.
46. Subramanian S, Roberts CL, Hart CA, et al. Replication of colonic Crohn's disease mucosal *Escherichia coli* isolates within macrophages and their susceptibility to antibiotics. *Antimicrob Agents Chemother* 2008;42:427-434.
47. Bibiloni R, Mangold M, Madsen KL, et al. The bacteriology of biopsies differs between newly diagnosed, untreated, Crohn's disease and ulcerative colitis patients. *J Med Microbiol.* 2006;55:1141-1149.
48. Seksik P, Rigottier-Gois L, Gramet G, et al. Alterations of the dominant faecal bacterial groups in patients with Crohn's disease of the colon. *Gut.* 2003;52:237-242.
49. Ott SJ, Musfeldt M, Wenderoth DF, et al. Reduction in diversity of the colonic mucosa associated bacterial microflora in patients with active inflammatory bowel disease. *Gut.* 2004;53:685-693.
50. Swidsinski A, Weber J, Loening-Baucke V, et al. Spatial organization and composition of the mucosal flora in patients with inflammatory bowel disease. *J Clin Microbiol.* 2005;43:3380-3389.

51. Frank DN, St Amand AL, Feldman RA, et al. Molecular-phylogenetic characterization of microbial community imbalances in human inflammatory bowel diseases. *Proc Natl Acad Sci USA*. 2007;104:13780-5.
52. Buhner S, Buning C, Genschel J, et al. Genetic basis for increased intestinal permeability in families with Crohn's disease: role of CARD15 3020insC mutation? *Gut*. 2006;55:342-7.
53. Irvine EJ, Marshall JK. Increased intestinal permeability precedes the onset of Crohn's disease in a subject with familial risk. *Gastroenterology*. 2000; 119:1740-4.

**Table 1** Clinical data for patients and responses to a questionnaire regarding the usage of antibiotics, non-steroidal anti-inflammatory drugs within the preceding 12 months and gastroenteritis within the last 3 months (same number for twin sets, followed by a small letter “a” or “b” for each individual in a pair).

ID	Status	Birth year	Sex	Nod2 status	Gastro-enteritis	Disease duration	Anti-biotics	NSAID	Surgery
9a	CCD	1947	M	wt	No	19	No	Yes	No
9b	CCD	1947	M	wt	No	20	No	No	No
10a	ICD	1962	F	wt	Yes	22	No	Yes	ileal res + righ hemi
10b	ICD	1962	F	wt	Yes	21	No	Yes	ileocec res
11a	CCD	1986	F	snp 8	No	4	No	No	No
11b	H	1986	F	snp 8	No	N/A	No	No	No
12a	H	1953	M	wt	No	N/A	No	Yes	No
12b	CCD	1953	M	wt	No	33	No	Yes	ileocec res
13a	CCD	1943	F	wt	No	18	No	Yes	segm colonic rers
13b	H	1943	F	wt	No	N/A	No	No	No
14a	H	1936	M	wt	No	N/A	No	Yes	No
14b	CCD	1936	M	wt	No	11	Yes	No	No
15a	ICD	1953	M	snp 8	No	31	No	No	ileal res
15b	ICD	1953	M	snp 8	No	31	No	No	ileocec res
16a	ICD	1954	F	wt	No	33	No	Yes	Ileo res + right hemi
16b	H	1954	F	wt	No	N/A	No	No	No
17a	CCD	1976	M	wt	No	11	No	Yes	No
17b	CCD	1976	M	wt	No	11	Yes	Yes	No
18a	ICD	1953	M	wt	No	34	No	No	ileal res + right hemi
18b	H	1953	M	wt	No	N/A	No	No	No

Abbreviations: ileal res, ileal resection; right hemi, right sided hemicolectomy; ileocec res, ileocecal resection; segm colonic res, segmental colonic resection; nd, no data; wt, wildtype; CCD, colonic Crohn’s disease; ICD, ileal Crohn’s disease; H, healthy

**Table 2** Oligonucleotides for PCR, qPCR and terminal restriction fragment length polymorphism (T-RFLP)

Target (purpose)	Sequence (5’-3’)	Annealing temp (°C)	Reference
Bacterial 16S rRNA gene (qPCR)	F: TCCTACGGGAGGCAGCAGT R: GGACTACCAGGGTATCTAATCCTGT P: CGTATTACCGCGGCTGCTGGCAC	60	<sup>27</sup>
<i>F. prausnitzii</i> (qPCR)	F: GATGGCCTCGCGTCCGATTAG R: CCGAAGACCTTCTTCCTCC	58	<sup>28</sup>
<i>uidA</i> (qPCR)	F: AGCGTTGAACTGCGTGATGC R: TCTGGCTTTTGGCTGTGACG	58	this study
<i>ipaH</i> (PCR)	F: TGGAAAACTCAGTGCCTCTGCGG R: TTCTGATGCCTGATGGACCAGGAG	60	<sup>29</sup>
<i>β-globin</i> (qPCR)	F: CAACTTCATCCACGTTCCACC R: GAAGAGCCAAGGACAGGTAC	58	this study
16S rRNA gene (T-RFLP/cloning)	F: AGAGTTTGATCCTGGCTCAG R: CCGTCAATTCCTTTRAGTTT	55	<sup>25</sup> <sup>26</sup>



## FIGURE LEGENDS

**Figure 1.** Similarity tree using Bray Curtis metrics of bacterial 16S rRNA gene terminal restriction fragment profiles from biopsies collected from the ileum (I), ascending colon (A), transverse colon (T), descending colon (D) and rectum (R) of individuals with predominantly ileal Crohn's disease (magenta bars), predominantly colonic Crohn's disease (green bars) and healthy individuals (blue bars). Same number for twin sets, followed by a small letter "a" or "b" for each individual in a pair.

**Figure 2.** Quantitative real-time PCR for *F. prausnitzii* 16S rRNA gene (A) and *E. coli uidA* (B) in mucosal DNA from the ileum, ascending colon, transverse colon, descending colon and rectum (displayed from left to right) from individuals with predominantly colonic Crohn's disease (CCD), healthy controls (HC) and with predominantly ileal Crohn's disease (ICD). Same number for twin sets, followed by a small letter "a" or "b" for each individual in a pair. (\* = CCD individuals with some ileal involvement. \*\* = ICD individuals with some colonic involvement)

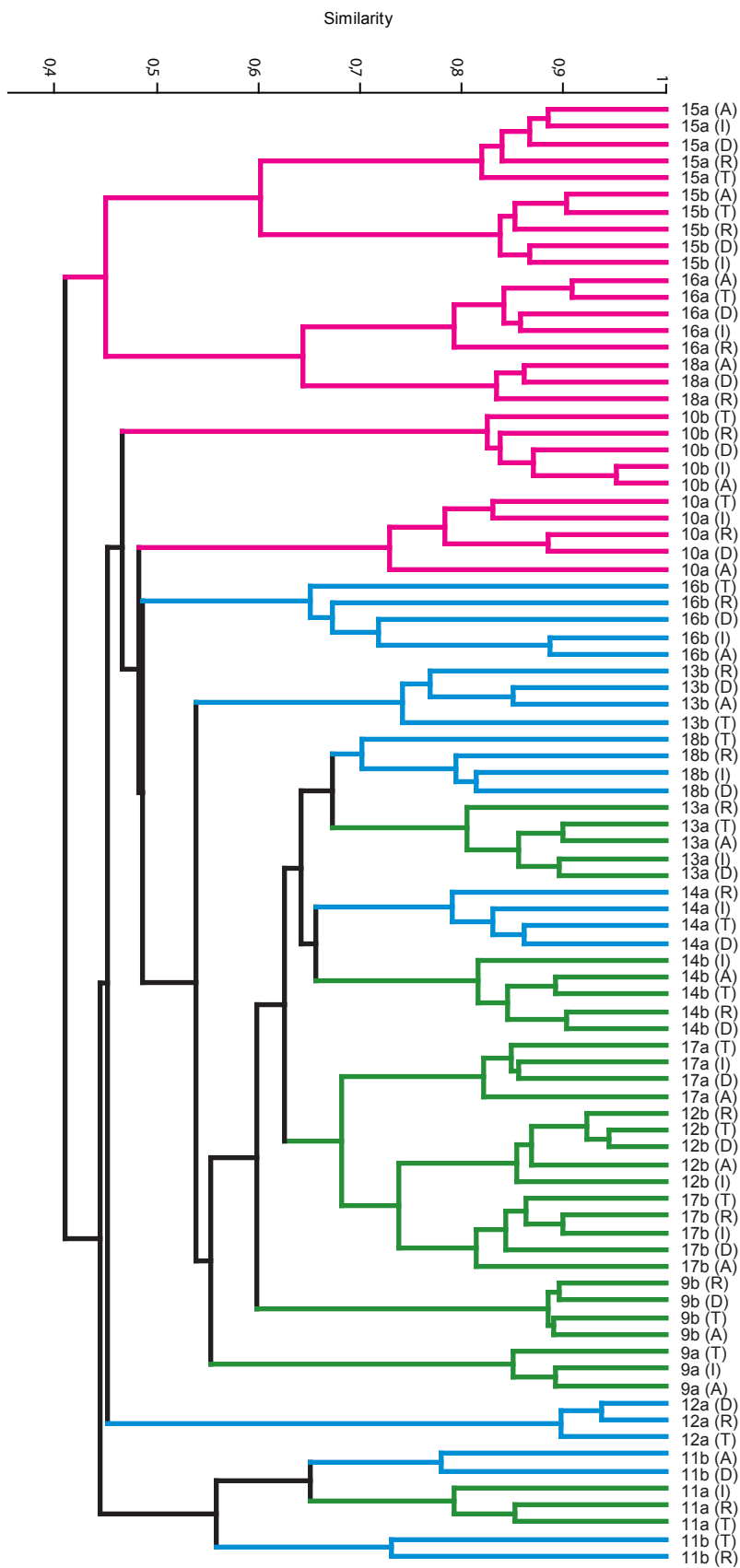


Figure 1

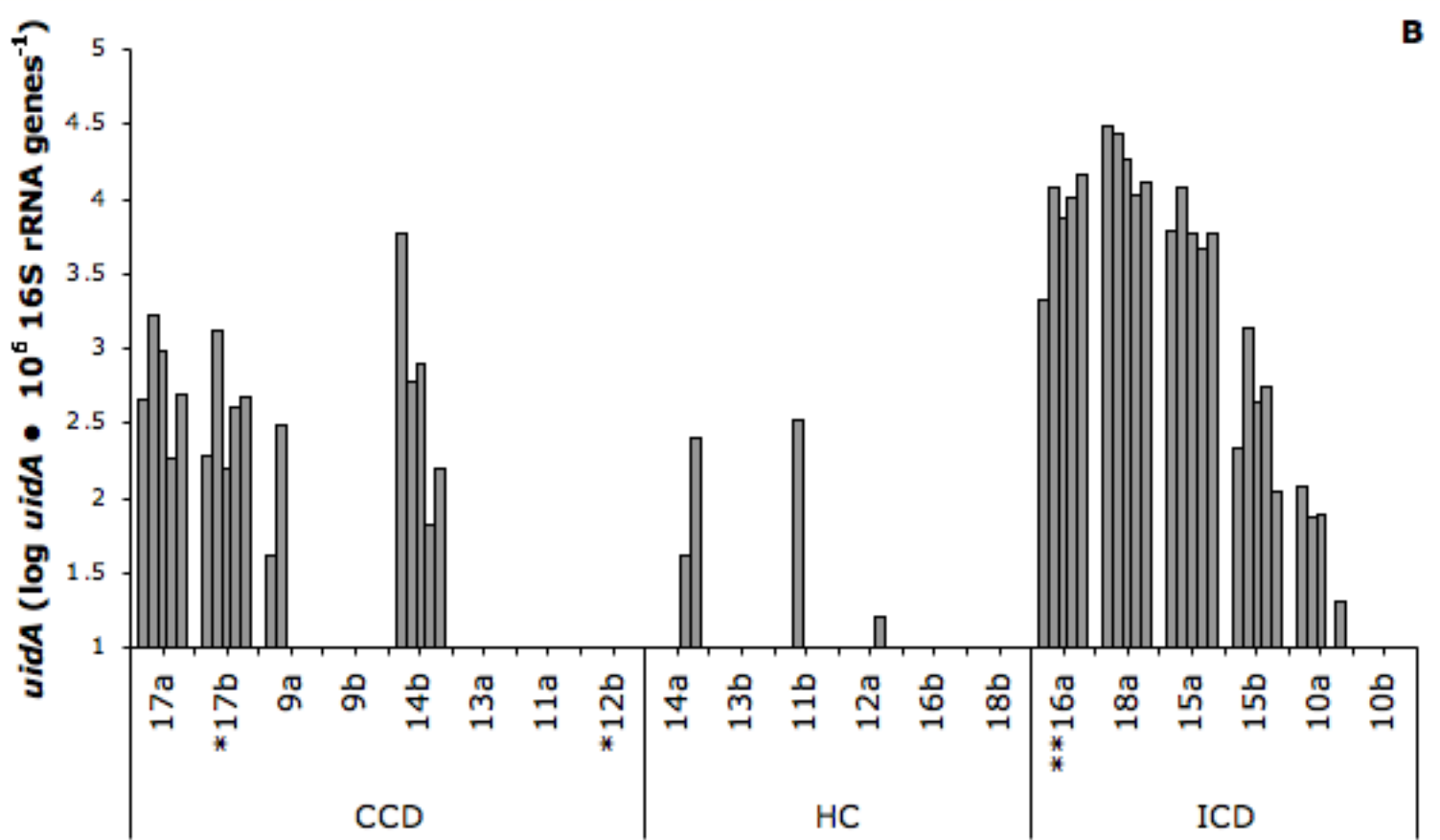
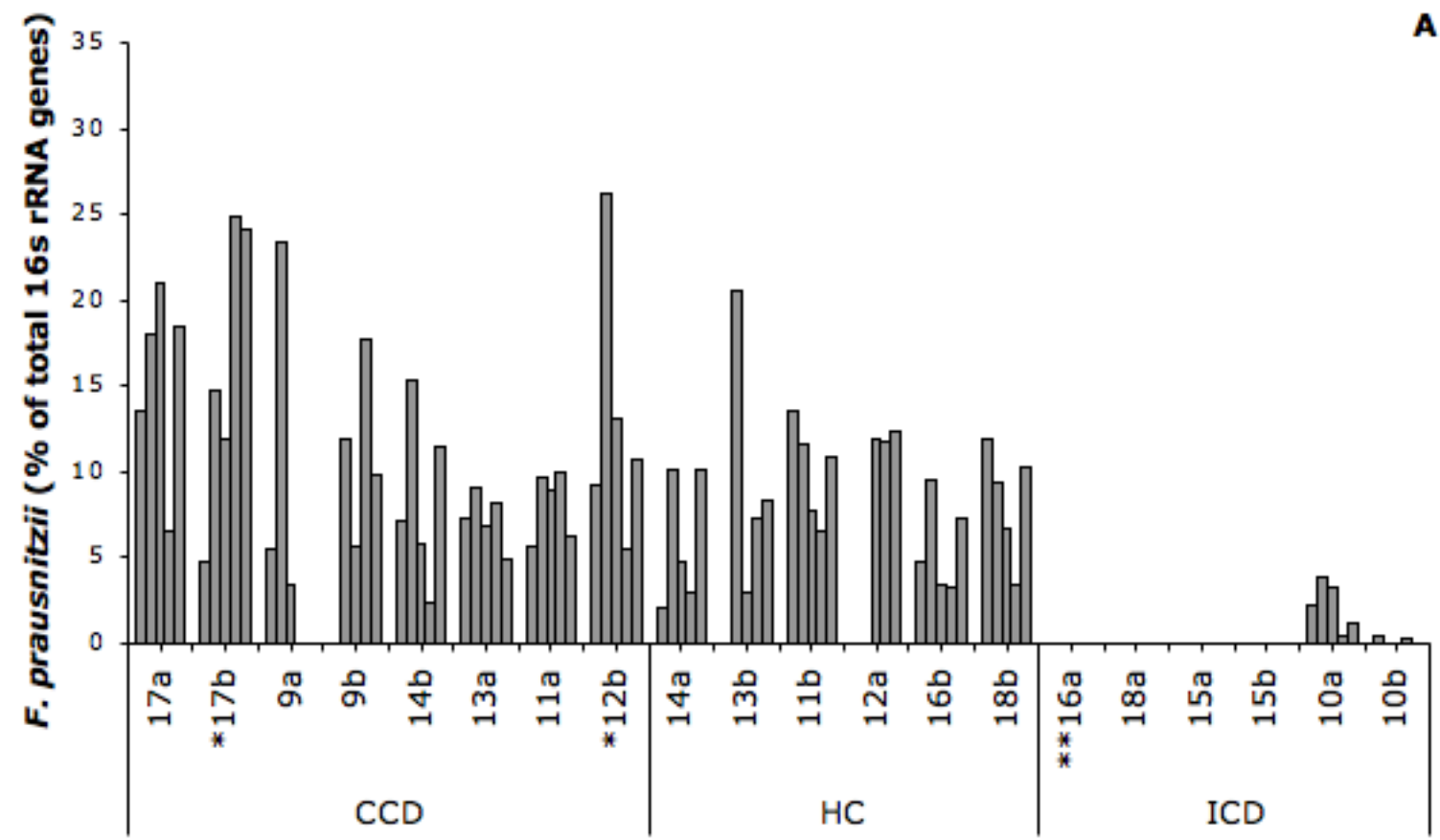


Figure 2