

UC Davis

UC Davis Previously Published Works

Title

Comorbid Chronic Diseases are Strongly Correlated with Disease Severity among COVID-19 Patients: A Systematic Review and Meta-Analysis.

Permalink

<https://escholarship.org/uc/item/0kn590xj>

Journal

Aging and disease, 11(3)

ISSN

2152-5250

Authors

Liu, Hong
Chen, Shiyan
Liu, Min
[et al.](#)

Publication Date

2020-05-01

DOI

10.14336/ad.2020.0502

Peer reviewed

Review

Comorbid Chronic Diseases are Strongly Correlated with Disease Severity among COVID-19 Patients: A Systematic Review and Meta-Analysis

Hong Liu¹, Shiyan Chen², Min Liu¹, Hao Nie³, Hongyun Lu^{4*}

¹Department of Nutrition, the Third Xiangya Hospital of Central South University, Changsha, China. ²Department of Endocrinology & Metabolism, the Fifth Affiliated Hospital of Sun Yat-sen University, Zhuhai, China. ³Department of Geriatrics, the First Affiliated Hospital of Hunan Normal University, Changsha, China. ⁴Department of Endocrinology & Metabolism, Zhuhai Hospital Affiliated with Jinan University, Zhuhai People's Hospital, Zhuhai, China.

[Received April 16, 2020; Revised May 1, 2020; Accepted May 2, 2020]

ABSTRACT: Coronavirus disease 2019 (COVID-19) has resulted in considerable morbidity and mortality worldwide since December 2019. In order to explore the effects of comorbid chronic diseases on clinical outcomes of COVID-19, a search was conducted in PubMed, Ovid MEDLINE, EMBASE, CDC, and NIH databases to April 25, 2020. A total of 24 peer-reviewed articles, including 10948 COVID-19 cases were selected. We found diabetes was present in 10.0%, coronary artery disease/cardiovascular disease (CAD/CVD) was in 8.0%, and hypertension was in 20.0%, which were much higher than that of chronic pulmonary disease (3.0%). Specifically, preexisting chronic conditions are strongly correlated with disease severity [Odds ratio (OR) 3.50, 95% CI 1.78 to 6.90], and being admitted to intensive care unit (ICU) (OR 3.36, 95% CI 1.67 to 6.76); in addition, compared to COVID-19 patients with no preexisting chronic diseases, COVID-19 patients who present with either diabetes, hypertension, CAD/CVD, or chronic pulmonary disease have a higher risk of developing severe disease, with an OR of 2.61 (95% CI 1.93 to 3.52), 2.84 (95% CI 2.22 to 3.63), 4.18 (95% CI 2.87 to 6.09) and 3.83 (95% CI 2.15 to 6.80), respectively. Surprisingly, we found no correlation between chronic conditions and increased risk of mortality (OR 2.09, 95% CI 0.26 to 16.67). Taken together, cardio-metabolic diseases, such as diabetes, hypertension and CAD/CVD were more common than chronic pulmonary disease in COVID-19 patients, however, each comorbid disease was correlated with increased disease severity. After active treatment, increased risk of mortality in patients with preexisting chronic diseases may reduce.

Key words: coronavirus disease 2019 (COVID-19), diabetes, cardiovascular diseases, hypertension, chronic pulmonary disease, meta-analysis

The recent outbreak of COVID-19 has been rapidly spreading on a global scale[1]. On January 30, 2020, the World Health Organization (WHO) declared that the epidemic of COVID-19 was a public health emergency of international concern (PHEIC). COVID-19 has resulted in

considerable morbidity and mortality in more than 200 countries and regions worldwide. At present, the number of patients with COVID-19 is rapidly rising to nearly 3 million, and its harm to human beings has exceeded the outbreak of severe acute respiratory syndrome (SARS) in

*Correspondence should be addressed to: Dr. Hongyun Lu, Department of Endocrinology & Metabolism, Zhuhai Hospital Affiliated with Jinan University, Zhuhai People's Hospital, Zhuhai 519000, Guangdong, China. E-mail: luhongy@mail.sysu.edu.cn

Copyright: © 2020 Liu H et al. This is an open-access article distributed under the terms of the [Creative Commons Attribution License](https://creativecommons.org/licenses/by/4.0/), which permits unrestricted use, distribution, and reproduction in any medium, provided the original author and source are credited.

2002 and Middle East respiratory syndrome (MERS) in 2012 [2]. As of April 29, 2020, more than 200,000 people all over the world lost their life because of the infection of SARS-CoV-2, with a crude death rate of 6.95%.

COVID-19 is general susceptibility [3-7] and is accompanied by a cluster of flu-like symptoms [6] and life-threatening severe illnesses including acute respiratory distress syndrome (ARDS), acute kidney injury, myocarditis, and organ failure [6, 8]. It is believed that middle-aged and elderly patients with chronic diseases, such as diabetes, cardiovascular diseases and hypertension are susceptible to respiratory failure and may have a poorer outcome [6, 8]. Evaluating the prevalence of these chronic conditions is fundamental to mitigate COVID-19 complications and mortality. However, this effort has been hindered by the limited number of cases in some studies, and the varying study designs [9-11].

This present study was aimed to provide a systematic evaluation and detailed estimate on the prevalence and effects of preexisting chronic conditions in COVID-19 patients. This assessment may aid the public health sector while developing policies for surveillance, preparedness, and response to COVID-19 and its severe outcomes.

MATERIALS AND METHODS

Search strategy and selection criteria

A search was conducted in PubMed, Ovid MEDLINE, EMBASE, CDC, and NIH databases to 25 April, 2020 using the search terms (MeSH) “Coronavirus disease

2019”, “2019 novel coronavirus”, “COVID-19”, “2019-nCov”, or “SARS Cov-2” AND “Diabetes”, “Hypertension”, “Chronic pulmonary disease” or “Cardiovascular disease”. The search was limited to articles describing the epidemiological, demographic, clinical features, outcomes and reporting the prevalence of chronic diseases in COVID-19 patients. Reports published as review articles, letters, case studies, editorials, conference abstracts, vaccination trials, family-based studies, and articles without abstracts were excluded.

The search identified 427 records; an additional eight reports were identified from a search of the bibliographies of previously obtained articles and other sources such as Google, Google Scholar, and the AMED (Allied and Complementary Medicine) search engine, for a total of 435 records. Following screening for duplicate records, the 435 records were all retained for abstract scanning against the above-mentioned inclusion/exclusion criteria. The abstracts of the identified studies were reviewed independently by both authors. Differences were resolved through discussion, until a consensus was reached. The abstract review resulted in the exclusion of 365 records. Full-text retrieval and review were conducted for the remaining 70 articles. 46 studies were then eliminated based upon the above selection criteria (Fig. 1). The percentage agreement on the inclusion between the two reviewers was 90%, with Cohen’s kappa statistic $k = 0.80$ [95% confidence interval (95% CI) 0.75 to 0.89]. A total of 24 peer-reviewed articles were selected for the present study (Table 1) [3-6, 8, 12-30].

Table 1. Characteristics of the included studies and meta-analysis of the clinical symptoms and comorbid chronic diseases in patients with COVID-19.

| Study[ref] ^a | NO | Dates (mm. yy) | n | | | Age ≥50 years (%) | Symptoms (%) | | | | | Comorbidities (%) | | | | |
|-----------------------------------|----|-------------------|------|-----|-----|----------------------------|----------------|-------|-------|--------------------------|---|-------------------|----------|--------------|--------------|---------------------------------|
| | | | All | M | F | | Age (years) | fever | cough | fatigue or myalgia | shortness of breath or dyspnea | diarrhea | diabetes | hypertension | CAD/ CVD | chronic pulmonary disease |
| Guan et al.,2020 ^[3] | 8 | 12.19-01.20 | 1099 | 640 | 459 | 47.0 | 44.0 | 88.7 | 67.8 | 38.1 | 18.7 | 3.8 | 7.4 | 15.0 | 2.5 | 1.1 |
| Chen et al.,2020 ^[4] | 7 | 01.20-01.20 | 99 | 67 | 32 | 55.5 | 67.7 | 82.8 | 81.8 | 11.0 | 31.3 | 2.0 | 13.0 | ^b | 40.0 | 1 |
| Huang et al.,2020 ^[18] | 6 | 12.19-01.20 | 41 | 30 | 11 | 49.0 | 48.8 | 98.0 | 76.0 | 44.0 | 55.0 | 3.0 | 20.0 | 15.0 | 15.0 | 2.0 |
| Liu et al.,2020 ^[8] | 7 | 12.19-01.20 | 137 | 61 | 76 | 55.0 | ^b | 81.8 | 48.2 | 32.1 | 19.0 | 8.0 | 10.2 | 9.5 | 7.3 | 1.5 |
| Shi et al.,2020 ^[22] | 6 | 12.19-01.20 | 81 | 42 | 39 | 49.5 | 49.4 | 73.0 | 59.0 | ^b | 42.0 | 4.0 | 12.0 | 15.0 | 10.0 | 11 |
| Song et al.,2020 ^[20] | 6 | 01.20-01.20 | 51 | 25 | 26 | 49.0 | 47.1 | 96.0 | 47.0 | 31.0 | 14.0 | 10.0 | 6.0 | 10.0 | 2.0 | 2.0 |
| Yang et al.,2020 ^[6] | 7 | 12.19-01.20 | 52 | 35 | 17 | 59.7 | 55.0 | 98.0 | 77.0 | 11.5 | 63.5 | ^b | 17.0 | ^b | 10.0 | 8 |
| Xu et al.,2020 ^[19] | 7 | 01.20-01.20 | 62 | 35 | 27 | 41.0 | ^b | 77.0 | 81.0 | 52.0 | ^b | 8.0 | 2.0 | 8.0 | ^b | 2.0 |
| Zhang et al.,2020 ^[15] | 8 | 01.20-02.20 | 140 | 71 | 69 | 57.0 | 70.0 | 78.6 | 64.3 | 64.3 | 31.4 | 12.9 | 12.1 | 30.0 | 5.0 | 2.8 |

| | | | | | | | | | | | | | | | | |
|--|---|-------------|-------|------|------|---|--------------|--------------|--------------|--------------|--------------|--------------|----------|--------------|--------------|--------------|
| Wu et al.,2020 ^[16] | 7 | 01.20-02.20 | 80 | 39 | 41 | 46.0 | 35.0 | 78.8 | 63.8 | 22.5 | 37.5 | 1.3 | 6.3 | ^b | 31.3 | 1.25 |
| Hu et al.,2020 ^[14] | 6 | 01.20-02.20 | 24 | 8 | 16 | 32.5 | 37.5 | 20.8 | 8.3 | 8.3 | ^b | ^b | 8.3 | 8.3 | 4.2 | 0.0 |
| Huang et al.,2020 ^[17] | 7 | 12.19-01.20 | 34 | 14 | 20 | 56.2 | ^b | 94.1 | 50.0 | 64.7 | 14.7 | 14.7 | 11.8 | 23.5 | 17.6 | 8.8 |
| Yang et al.,2020 ^[13] | 8 | 01.20-02.20 | 149 | 81 | 68 | 45.1 | ^b | 76.5 | 58.4 | 3.4 | 1.3 | 7.4 | 6.0 | ^b | 18.8 | 0.7 |
| Wang et al.,2020 ^[5] | 7 | 01.20-01.20 | 138 | 75 | 63 | 56.0 | ^b | 98.6 | 59.4 | 69.6 | 31.2 | 10.1 | 10.1 | 31.2 | 14.5 | 2.9 |
| Xu et al.,2020 ^[21] | 7 | 01.20-02.20 | 90 | 39 | 51 | 50.0 | ^b | 78.0 | 63.0 | 28.0 | ^b | 6.0 | 6.0 | 19.0 | 3.0 | 1.0 |
| Li et al.,2020 ^[12] | 7 | 01.20-02.20 | 83 | 44 | 39 | 45.5 | ^b | 86.7 | 78.3 | 18.1 | 10.8 | 8.4 | 7.8 | 6.0 | 1.2 | 6.0 |
| Shi et al.,2020 ^[23] | 8 | 01.20-02.10 | 416 | 205 | 211 | 64 | ^b | 80.3 | 34.6 | 13.2 | 28.1 | 3.8 | 14.4 | 30.5 | 10.6 | 2.9 |
| Bhatraju et al.,2020 ^[24] | 6 | 02.20-03.20 | 24 | 15 | 9 | 64 | ^b | 50.0 | 88.0 | ^b | 88.0 | ^b | 58.0 | ^b | ^b | 16.7 |
| Feng et al.,2020 ^[25] | 7 | 01.20-02.20 | 476 | 271 | 205 | 53 | ^b | 81.9 | 56.5 | 11.6 | 22.9 | 10.3 | 10.3 | 23.7 | 8.0 | 4.6 |
| Du et al.,2020 ^[26] | 8 | 12.19-02.20 | 179 | 97 | 82 | 57.6 | 72.6 | 98.9 | 81.6 | 39.7 | 49.7 | 21.8 | 18.4 | 32.4 | 16.2 | 4.5 |
| Liu et al.,2020 ^[27] | 6 | 12.19-01.20 | 78 | 39 | 39 | 38 | ^b | 73.1 | 43.6 | ^b | ^b | ^b | 6.4 | 10.3 | ^b | 2.6 |
| Grasselli et al.,2020 ^[28] | 8 | 02.20-03.20 | 1591 | 1304 | 287 | 63 | 87.2 | ^b | ^b | ^b | ^b | ^b | 11.3 | 32.0 | 14.0 | 2.6 |
| Richardson et al.,2020 ^[29] | 8 | 03.20-04.20 | 5700 | 3437 | 2263 | 63 | 78.5 | 30.4 | ^b | ^b | 17.3 | ^b | 31.8 | 53.0 | 16.9 | 8.4 |
| Simonnet et al.,2020 ^[30] | 7 | 02.20-04.20 | 124 | 90 | 34 | 60 | 1.00 | ^b | ^b | ^b | ^b | ^b | 22.6 | 48.4 | ^b | ^b |
| Total/Overall | | 12.19-04.20 | 10948 | 6764 | 4184 | 52.4 ^c (32.5-64.0) ^d | | | | | | | | | | |
| Prevalence ^e | | | | | | | 59.0 | 79.0 | 61.0 | 32.0 | 31.0 | 7.0 | 10.0 | 20.0 | 8.0 | 3.0 |
| 95% CI | | | | | | | 49.0-68.0 | 65.0-92.0 | 54.0-69.0 | 21.0-43.0 | 25.0-37.0 | 5.0-9.0 | 8.0-12.0 | 15.0-26.0 | 3.0-12.0 | 1.0-3.0 |
| I^2 (%) | | | | | | | 98.5 | 99.7 | 95.1 | 98.5 | 97.4 | 81.1 | 73.0 | 94.2 | 98.0 | 94.5 |

mm, month; yy, year; M, male; F, female; SE, standard error; CI, confidence interval, NOS, Newcastle-Ottawa Scale;

^a [3], [8], [12], [23], [25], [27] Studies were from China; [24], [29] studies were from America; [28] study was from Italy; [30] study was from France.

^b Any empty cells represents the absence of data in the original text.

^c the median age [IQR].

^d Age range.

^e Meta-analysis for the prevalence was calculated from binary random-effects model analysis.

^f $p < 0.001$.

Data Extraction and Quality Assessment

We used Newcalttle-Ottawa scale (NOS) (Table 1) for evaluating the quality of the included studies and Preferred Reporting Items for Systematic Reviews and Meta-Analyses (PRISMA) standards (Supplementary Table 1) for abstracting data and assessing data quality and validity. Independent extraction was conducted by two observers. NOS scores of at least six were considered high-quality literature.

The prevalence of preexisting chronic diseases including diabetes, hypertension, coronary artery disease/cardiovascular disease (CAD/CVD) and chronic pulmonary disease, together with clinical symptoms such as fever, cough, fatigue or myalgia and shortness of breath or dyspnea were extracted from the identified studies. The primary outcome measure was the prevalence of comorbid chronic diseases in COVID-19 patients and the

correlation between comorbid chronic diseases and adverse outcomes [increased risk of disease severity, admittance to intensive care unit (ICU), and mortality].

Statistical Analysis

All analyses were performed using Stata/SE 16.0. Results about the correlation between comorbid chronic diseases and adverse outcomes were expressed as pooled odds ratios (OR), and 95% CI. OR values > 1 represent a direct association and < 1 an inverse association. The size of the squares was correlated with the weight of the selected study [31].

The results of the included studies were performed with fixed/random-effect models. We used the I^2 statistics to assess the magnitude of heterogeneity: 25%, 50%, and 75% represented low, moderate, and high degrees of heterogeneity, respectively. The chosen of the proper

effect model was based on the analysis results: the fixed effect model was used if $I^2 < 50\%$ and the random effect model was used if $I^2 \geq 50\%$ [31].

The potential for publication bias was addressed by drawing Begg funnel plots and Egger's linear regression test plots; and $p < 0.05$ indicates obvious publication bias.

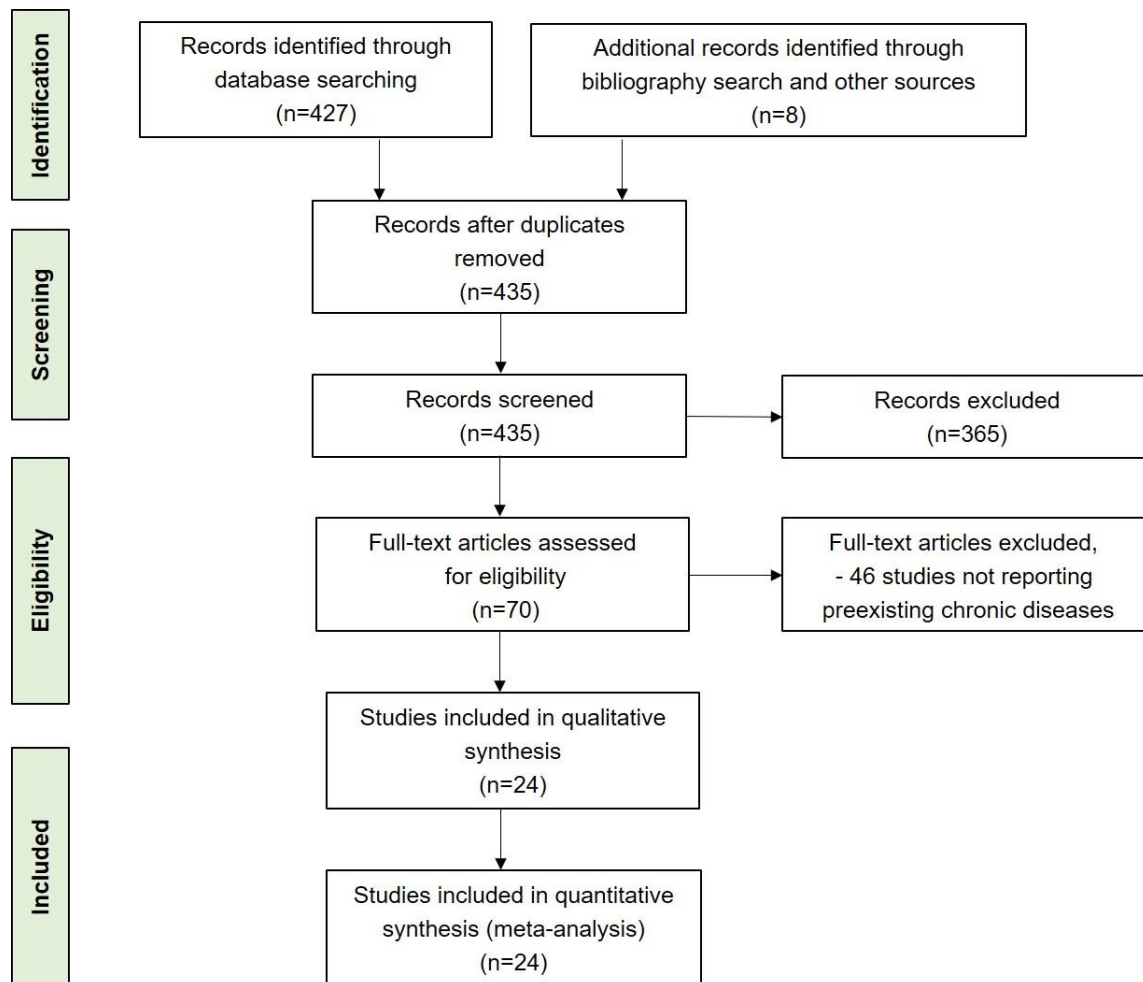


Figure 1. Systematic literature review process. The flow diagram describes the systematic review of the literature for the proportion of comorbid chronic diseases in patients with COVID-19.

RESULTS

Characteristics of the included studies and meta-analysis of the clinical symptoms in patients with COVID-19

A total of 24 studies were included in our final analysis [3-6, 8, 12-30], with a total of 10948 COVID-19 patients (Table 1). Among them, 20 studies were from China, 2 from United States, 1 from Italy, and 1 from France. The number of cases in the selected studies varied by approximately 238-fold and ranged from 24 [14, 24] to 5700 [29] cases. The sex ratio (male to female) was 1.62 and the overall median age of the subjects was 52.4 years (range 32.5 to 64.0 years) (Table 1). Meta-analysis also

suggests that people aged more than 50 years occurred 59.0% (95% CI 49.0% to 68.0%) in patients with COVID-19 (Table 1).

Meta-analysis of the included studies showed that the most prevalent clinical symptoms were fever (79.0%, 95% CI 65.0% to 92.0%) and cough (61.0%, 95% CI 54.0% to 69.0%), followed by fatigue or myalgia (32.0%, 95% CI 21.0% to 43.0%), shortness of breath or dyspnea (31.0%, 95% CI 25.0% to 37.0%) and diarrhea (7.0%, 95% CI 5.0% to 9.0%). There was significant heterogeneity (Cochran's Q) in the estimates of clinical symptoms among the examined studies ($p < 0.05$) with an I^2 index varying from 81.1% to 99.7% (Table 1).

Characteristics of the included studies grouped by disease severity in patients with COVID-19

Among the 10948 cases, 2699 cases were severe patients (Table 2). The sex ratio (male to female) in severe and non-severe group has no statistical significance (the ratio is 2.66 and 1.21, respectively, $p=0.55$), and the median age of the subjects in severe group was older than non-severe group [60.9 years (range 45.0 to 74.0 years) vs 43.8 years (range 37.0 to 60.0 years), $p=0.003$] (Table 2).

Meta-analysis of the identified studies showed that the incidence of fever, cough and fatigue or myalgia in severe patients was higher than that in mild patients, but there was no significant difference (p was 0.28, 0.10 and 0.24, respectively). The incidence of shortness of breath or dyspnea in severe patients was significantly higher than that in mild patients ($p=0.006$). The incidence of diarrhea was the same in the two groups ($p=0.18$) (Table 2).

Table 2. Characteristics of the included studies grouped by severe and non-severe cases and meta-analysis of the clinical symptoms and comorbid chronic diseases in patients with COVID-19.

| Study[ref] ^a | n | | | | Symptoms (%) | | | | | | | | | | Comorbidities (%) | | | | | | | | | | | | |
|---------------------------------------|------------|-----|-----|---|--------------|------|-----|---|------------|-----------|-----------|-----------|--------------------|-----------|--------------------------------|----------|----------|--------|----------|--------|--------------|--------|---------|--------|---------------------------|--------|------|
| | non-severe | | | | severe | | | | fever | | cough | | fatigue or myalgia | | shortness of breath or dyspnea | | diarrhea | | diabetes | | hypertension | | CAD/CVD | | chronic pulmonary disease | | |
| | All | M | F | age | All | M | F | age | mild | severe | mild | severe | mild | severe | mild | severe | mild | severe | mild | severe | mild | severe | mild | severe | mild | severe | |
| Guan et al.,2020 ^[3] | 926 | 540 | 386 | 45.0 | 173 | 100 | 73 | 52.0 | 88.1 | 91.9 | 67.3 | 70.5 | 37.8 | 39.9 | 15.1 | 37.6 | 3.5 | 5.8 | 5.7 | 16.2 | 13.5 | 23.7 | 1.8 | 5.8 | 0.6 | 3.5 | |
| Huang et al.,2020 ^[18] | 28 | 19 | 9 | 49.0 | 13 | 11 | 2 | 49.0 | 96.0 | 100.0 | 71.0 | 85.0 | 39.0 | 54.0 | 37.0 | 92.0 | 4.0 | 0.0 | 25.0 | 8.0 | 14.0 | 15.0 | 11.0 | 23.0 | 0.0 | 8.0 | |
| Yang et al.,2020 ^[6] | 20 | 14 | 6 | 51.9 | 32 | 21 | 11 | 64.6 | 100.0 | 97.0 | 75.0 | 78.0 | 10.0 | 12.5 | 60.0 | 66.0 | b | b | 10.0 | 22.0 | b | b | 10.0 | 9.0 | 10.0 | 6.0 | |
| Xu et al.,2020 ^[19] | 29 | 16 | 13 | 39 | 33 | 19 | 14 | 45 | 83 | 73 | 79 | 82 | 45 | 58 | b | b | 0 | 9 | 0.0 | 3.0 | 3.0 | 12.0 | b | b | 0 | 3.0 | |
| Zhang et al.,2020 ^[15] | 82 | 38 | 44 | 51.5 | 58 | 33 | 25 | 64.0 | 72.0 | 87.9 | 54.9 | 77.6 | 62.2 | 67.2 | 24.4 | 41.4 | 11.0 | 15.5 | 11.0 | 13.8 | 24.4 | 37.9 | 3.7 | 6.9 | 0.0 | 3.4 | |
| Wang et al.,2020 ^[5] | 102 | 53 | 51 | 51.0 | 36 | 22 | 14 | 66.0 | 98.0 | 100.0 | 59.8 | 58.3 | 35.3 | 33.3 | 19.6 | 63.9 | 7.8 | 16.7 | 5.9 | 22.2 | 21.6 | 58.3 | 10.8 | 25.0 | 1.0 | 8.3 | |
| Li et al.,2020 ^[12] | 58 | 29 | 29 | 41.9 | 25 | 15 | 10 | 53.7 | 86.2 | 88.0 | 70.7 | 96.0 | 17.2 | 20.0 | 3.4 | 28.0 | 8.6 | 8.0 | 0.0 | 28.0 | 5.2 | 8.0 | 0.0 | 4.0 | 1.7 | 16.0 | |
| Shi et al.,2020 ^[23] | 334 | 161 | 173 | 60 | 82 | 44 | 38 | 74 | 81.1 | 76.8 | 34.7 | 34.1 | 12 | 18.3 | 27.2 | 31.7 | 4.5 | 1.2 | 12 | 24.4 | 23.4 | 59.8 | 6 | 29.3 | 1.8 | 8.5 | |
| Bhatraju et al.,2020 ^[24] | b | b | b | b | 24 | 15 | 9 | 64.0 | b | 50.0 | b | 88.0 | b | b | b | 88.0 | b | b | b | 58.0 | b | b | b | b | b | b | 16.7 |
| Feng et al.,2020 ^[25] | b | b | b | b | 476 | 271 | 205 | b | 0 | 85.9 | 0 | 59.4 | 0 | 12.6 | 0 | 24.4 | 0 | 11.0 | 0 | 10.3 | 0 | 23.7 | 0 | 8.0 | 0 | 4.6 | |
| Du et al.,2020 ^[26] | 158 | 87 | 71 | 56 | 21 | 10 | 11 | 70.2 | 98.7 | 100 | 83.5 | 66.7 | 36.7 | 61.9 | 44.9 | 85.7 | 19.6 | 38.1 | 17.1 | 28.6 | 28.5 | 61.9 | 10.8 | 57.1 | 5.1 | 0 | |
| Liu et al.,2020 ^[27] | 67 | 32 | 35 | 37 | 11 | 7 | 4 | 66 | b | b | 44.8 | 46.4 | b | b | b | b | b | b | 4.5 | 18.2 | 9 | 18.2 | b | b | 1.5 | 9.1 | |
| Grasselli et al.,2020 ^[28] | b | b | b | b | 159 | 1304 | 287 | 63 | b | b | b | b | b | b | b | b | b | b | b | 11.3 | b | 32 | b | 14 | b | 2.6 | |
| Simonnet et al.,2020 ^[30] | b | b | b | b | 124 | 90 | 34 | 60 | b | b | b | b | b | b | b | b | b | b | b | 22.6 | b | 48.4 | b | b | b | b | |
| Total/Overall | 1840 | 989 | 817 | 43.8 ^c (37.0-60.0) ^d | 2699 | 1962 | 737 | 60.9 ^c (45.0-74.0) ^d | | | | | | | | | | | | | | | | | | | |
| Prevalence ^e | | | | | | | | 90.0 | 99.0 | 64.0 | 71.0 | 32.0 | 37.0 | 27.0 | 55.0 | 8.0 | 8.0 | | | | | | | | | | |
| 95% CI | | | | | | | | 86.0-95.0 | 98.0-100.0 | 52.0-75.0 | 60.0-81.0 | 21.0-44.0 | 24.0-50.0 | 17.0-36.0 | 39.0-71.0 | 4.0-11.0 | 4.0-13.0 | | | | | | | | | | |
| Q ^f | | | | | | | | | | | | | | | | | | | | | | | | | | | |
| I ² (%) | | | | | | | | 95.5 | 94.0 | 95.4 | 91.7 | 95.6 | 94.2 | 94.4 | 95.9 | 81.2 | 92.5 | | | | | | | | | | |

M, male; F, female; SE, standard error; CI, confidence interval.

^a [3], [18], [6], [15], [5], [12], [19], [23], [25], [26], [27] Studies were from China; ^[24] study was from America; ^[28] study was from Italy; ^[30] study was from France.

^b Any empty cells represents the absence of data in the original text.

^c the median age [IQR].
^d Age range.
^e Meta-analysis for the prevalence was calculated from binary random-effects model analysis.
^f $p < 0.001$.

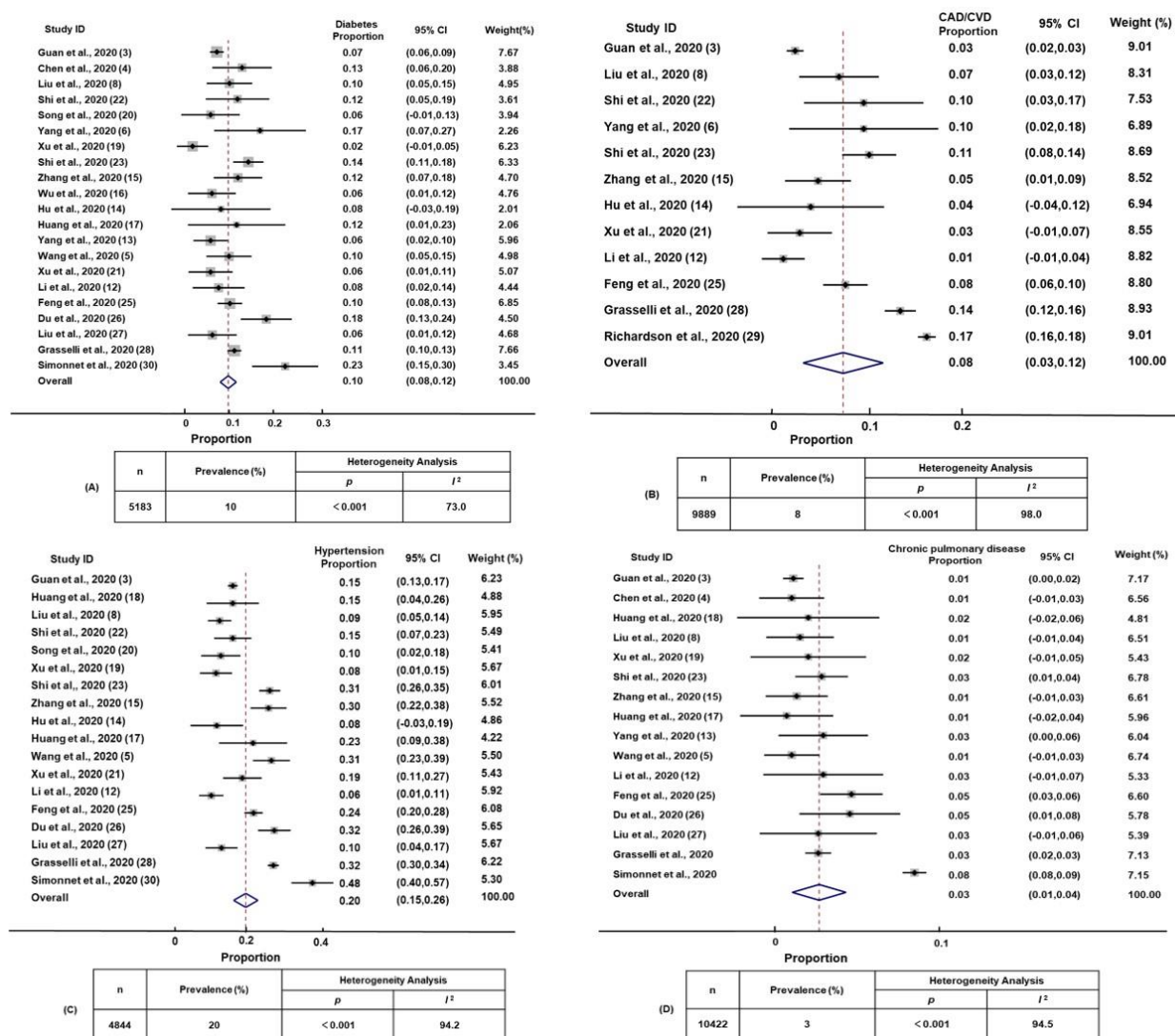


Figure 2. The proportions of comorbid chronic diseases in patients with COVID-19. Forest plot showing the proportion of comorbid diabetes (A), coronary artery disease/cardiovascular disease (CAD/CVD) (B), hypertension (C), and chronic pulmonary disease (D) in SARS-CoV-2-infected patients. Weights were calculated from random-effects model analyses. The size of the squares reflects the relative weight of each study in the meta-analysis. Inserts within each panel show the total number of subjects analyzed (n) and prevalence (%) of the comorbid diseases (%), together with heterogeneity analysis carried out using the Q test and the among-studies variation (I² index).

The incidence of comorbid chronic diseases in patients with COVID-19

As shown in Fig. 2 (inserts A and B), diabetes was present in 10.0% (95% CI 8.0% to 12.0%) and CAD/CVD was prevalent in 8.0% (95% CI 3.0% to 12.0%) of the patients. Hypertension was present in 20.0% (95% CI 15.0% to 26.0%) and chronic pulmonary disease in 3.0% (95% CI

1.0% to 4.0%) (Fig. 2, inserts C and D). The proportions of diabetes, hypertension, CAD/CVD and chronic pulmonary disease varied by 11.5-, 8.0-, 17.0- and 8.0-fold, respectively, among the identified studies. This wide among-studies variation in the proportion of comorbid diseases may have resulted in the significant heterogeneity (Cochran's Q) observed for estimates of diabetes, hypertension, CAD/CVD and chronic

pulmonary disease ($p < 0.001$), with an I^2 index ranging from 73.0% to 98.0% (Fig. 2).

The effects of comorbid chronic diseases on the clinical outcomes in patients with COVID-19

We screened out articles that included the numbers of death, disease severity, or admittance to ICU, which allowed us to pool their data into a further analysis. Next, we performed a meta-analysis in order to examine the association between preexisting chronic diseases and clinical outcomes (disease severity, admittance to ICU and mortality rate) in patients with COVID-19. We found that preexisting chronic diseases were strongly correlated with increased disease severity (OR 3.50, 95% CI 1.78 to 6.90), with moderate heterogeneity ($I^2=60.9\%$); increased

admittance to ICU (OR 3.36, 95% CI 1.67 to 6.76), with low heterogeneity ($I^2=36.0\%$) (Supplementary Fig. 1, inserts A and B). To our surprise, our analysis revealed that preexisting chronic diseases were not significantly correlated with COVID-19 mortality (OR 2.09, 95% CI 0.26 to 16.67) (Supplementary Fig. 1, inserts C).

Next, we found that both preexisting diabetes and hypertension are highly correlated with increased risk of disease severity (OR 2.61, 95% CI 1.93 to 3.52, $I^2=26.7\%$; and OR 2.84, 95% CI 2.22 to 3.63, $I^2=36.8\%$, respectively); and that preexisting CAD/CVD and chronic pulmonary disease are also correlated with disease severity (OR 4.18, 95% CI 2.87 to 6.09, $I^2=31.6\%$; and OR 3.83, 95% CI 2.15 to 6.80, $I^2=0.0\%$, respectively) (Fig. 3, inserts A-D).

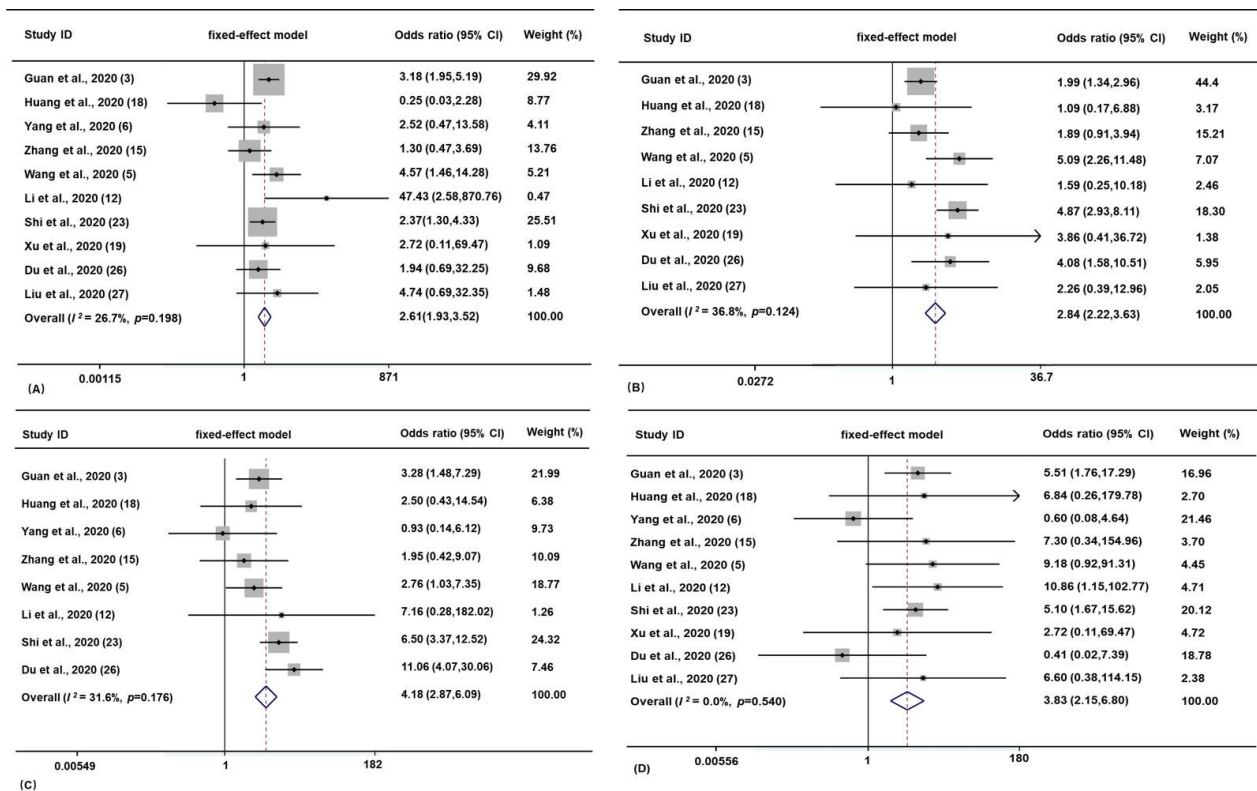


Figure 3. Correlation between comorbid chronic diseases and severe COVID-19 in SARS-CoV-2 infected patients. Forest plot showing the effects of comorbid diabetes (A), hypertension (B), CAD/CVD (C), and chronic pulmonary disease (D) on the risk of severe COVID-19 in SARS-CoV-2-infected patients. In this figures, the horizontal lines indicate the lower and upper limits of the 95% CI, and the size of the squares reflects the relative weight of each study in the meta-analysis. Weights were calculated from fixed-effects model analyses. Heterogeneity analysis was carried out using Q test and among-studies variation (I^2 index).

Publication bias

Begg’s test (all $Pr > 0.05$) and Egger’s regression test (all $P > 0.05$) suggest no significant publication bias (Supplementary Fig. 2, inserts A-H).

DISCUSSION

Recent studies had confirmed that SARS-CoV-2 infection can bring human-to-human transmission and lead to a serious of respiratory, enteric, hepatic, and neurologic damage [32]. SARS-CoV-2 is one type of coronaviruses

that belongs to the β -coronavirus cluster. It causes the third kind of zoonotic coronavirus disease after SARS and Middle East respiratory syndrome (MERS) [32]. Both MERS-CoV and SARS-CoV have much higher case fatality rates (40% and 10%, respectively). Though the current SARS-CoV-2 shares 79% of its genome with SARS-CoV, it appears to be much more transmissible [32-33].

The COVID-19 caused a pandemic all over the world. The sex ratio (male to female) was 1.62 observed in the 10948 cases examined in our study. It shows that male was more susceptible to COVID-19. And both sexes exhibited clinical presentations similar in symptomatology. These generally include fever, cough, fatigue or myalgia, breathing difficulty, and diarrhea (Table 1). According to the results of meta-analysis, the top four symptoms of patients with COVID-19 were fever, cough, fatigue or myalgia, and shortness of breath or dyspnea. Diarrhea only occurred among a small number of patients (7.0%, 95% CI 5.0% to 9.0%). However, a recent study reported that diarrhoea was observed in 21% patients with COVID-19, and patients with diarrhoea were older and more likely to have comorbid chronic diseases than patients without diarrhoea [34]. It showed that diarrhoea may be a risk factor for disease severity. Meta-analysis also suggests that people aged more than 50 years occurred 59.0% (95% CI 49.0% to 68.0%) during patients with COVID-19 (Table 1). Another meta-analysis showed that elderly people had the highest risk of death during both seasonal and pandemic influenza seasons; in contrast, children and young people aged less than 18 years had a significantly reduced risk of death compared with non-elderly adults during pandemics [35].

Meta-analysis of the data extracted from the included studies (Fig. 2) suggested that diabetes and CAD/CVD were prevalent in 10.0% and 8.0% of the patients, respectively. The proportion of hypertension (20.0%) was much higher than that of chronic pulmonary disease (3.0%) in COVID-19 patients. In April 2016, a study showed that about one-third (32.5%) of Chinese adults had hypertension [35]. The incidence of diabetes, coronary artery disease, and chronic pulmonary disease in China was 10.4%, 1.02%, and 8.0% according to the latest epidemiological data. In conclusion, because hypertension has a much higher prevalence in the population, the incidence of hypertension in patients with COVID-19 was also significantly higher than other comorbid chronic diseases. However, the possible another reason for the low incidence of chronic pulmonary disease in COVID-19 patients is that patients with chronic pulmonary disease may pay more attention to themselves or that virus deposition in the lung could be inhibited by the long-term use of inhaled hormones during patients

with asthma. However, another study [36] noted that, patients with chronic pulmonary disease were more likely to need for ICU treatment and ventilator support once they infected pandemic influenza. Our meta-analysis also found that chronic pulmonary disease was a risk factor for increased disease severity in SARS-CoV-2 infected patients. This suggests that the underlying lesions of the lungs in chronic pulmonary disease patients make them more likely to develop into severe cases of influenza or COVID-19. Our finding is consistent with the conclusion of a meta-analysis [37] published a few days ago which included six literatures and found that chronic obstructive pulmonary disease (COPD) was associated with increased disease severity in COVID-19 patients. The sample size included in our present study was larger and the results may be more convincing. Alaa Badawi et al. [38] reported that diabetes and hypertension were equally prevalent in approximately 50%, and CAD/CVD was present in 30% of the severe MERS patients. We also found that the prevalence of diabetes in two studies [24, 29] (cases were from America) was much higher than other 22 studies [3-6, 8, 12-23, 25-28, 30] (cases were from China, Italy, and France) included in our final meta-analysis. However, these could be a reflection of the prevalence of chronic diseases in different regions and races.

In our analysis, we also found that preexisting chronic diseases were strongly correlated with the increased disease severity and increased admittance to ICU. To our surprise, our analysis revealed that preexisting chronic diseases were not significantly correlated with COVID-19 mortality. The possible reason may be the limited literatures. Though there were 24 articles included in our final analysis, only 3 reported the death numbers in COVID-19 patients based on whether there were comorbid chronic diseases. Among the three studies, two studies revealed that compared to COVID-19 patients with no preexisting chronic diseases, COVID-19 patients who present with chronic diseases have a higher rate for mortality; another one study revealed that there was no significant difference in mortality between the two groups. Next, we need more high-quality literatures to confirm the conclusion. The significance of this result is that SARS-CoV-2 infected patients who have preexisting chronic diseases should be hospitalized earlier and get more medical intervention such as ICU admission and mechanical ventilation therapy.

Another study [35] noted that severe pandemic influenza occurred significantly more often in those who were obese (OR 2.74, 95% CI 1.56 to 4.80) and in those who had cardiovascular disease (OR 2.92, 95% CI 1.76 to 4.86), hypertension (OR 1.49, 95% CI 1.10 to 2.01) and neuromuscular disease (OR 2.68, 95% CI 1.91 to 3.75). The comorbid chronic diseases influencing the COVID-19 outcomes may have similar effects in severe MERS

and other respiratory illnesses such as influenza H1N1 [39-40]. Common chronic conditions during older people such as diabetes, hypertension, and CAD/CVD, together with their predisposing conditions, may be linked etiologically to the pathogenesis of COVID-19. Chronic diseases share several common features with infectious disorders and their complications, such as endothelial dysfunction, the pro-inflammatory state, and alterations in the innate immune response [41-43]. For example, diabetes and hyperglycemia increase systemic oxidative stress and vascular inflammation. Excessive vascular oxidative stress and vascular inflammation are central characteristics of phenotypical endothelial dysfunction. Chronic diseases associated vascular endothelial dysfunction relates to local vascular inflammation as well as to systemic inflammation. Research also delineate novel roles for elements of both innate and adaptive immune responses in regulating endothelial function under hypertensive conditions. Activation of innate immunity's complement pathway may negatively impact vascular endothelial function in hypertension [44], whereas increased anti-inflammatory interleukin-10 expression from the adaptive immune response blunts the adverse effects on endothelial function of angiotensin II-associated hypertension [45].

Diabetes mellitus is closely related to the occurrence of severe viral pneumonia and death. For example, in 2003, the mortality of SARS-infected patients who had diabetes mellitus was 3.0-3.3 times higher than that of patients without diabetes mellitus [46, 47]. In 2009, the number of being admitted to ICU in H1N1-infected patients who had diabetes was 4.29 times higher than that of patients without diabetes [48]. Diabetes is also a high risk factor for developing severe MERS in 2014 [48]. Due to abnormal immune functions such as decreased CD3⁺ T cells, imbalance of CD4⁺/CD8⁺ T cells and decreased natural killer T cell activity, the immune response ability of the body is decreased [49]. Therefore, preexisting diabetes is a predictive factor for virus infection. On the other hand, angiotensin converting enzyme 2 (ACE2), the functional receptor of SARS-CoV, is also expressed in the islets of the pancreas, so the virus may destroy the islets and aggravate diabetes during infection [50]. SARS-CoV-2 virus can also bind to ACE2 on cells [51]. Virus infection may interact with diabetes, causing SARS-CoV-2 infected patients who had diabetes to be more susceptible to developing severe cases and death.

Strengths and Limitations of Study

The present study has several limitations. First, the included studies showed a wide variance among studies in the proportion of diabetes, hypertension, CAD/CVD, and chronic pulmonary disease, which may have contributed

to the observed significant heterogeneity. Additional sources of heterogeneity may relate to the large variation among studies in the sample size (24 to 5700 patients). Second, most of the studies were from China. These factors may cause some limitations on the estimated contribution of comorbid chronic diseases to COVID-19 cases. Further investigations are needed to examine the nature and extent of coexistence between COVID-19 and non-communicable diseases.

Despite these limitations, our study also has notable strengths. First, this analysis was obtained by pooling data from a number of clinical studies which significantly increased the statistical power of the analysis compared to a single study. Second, the included studies originated from different countries and included different ethnic backgrounds, allowing for the generalization of our results. In conclusion, patients with preexisting chronic diseases may have a higher risk for developing severe COVID-19 and should be given close attention.

Acknowledgments

This study was supported by the National Natural Science Foundation of China (Grant 81670815), Guangdong Basic and Applied Basic Research Foundation (Grant 2020A1515010124) and Special fund for innovation strategy of science and technology plan of Guangdong province (2019A030317011). We acknowledge all health-care workers involved in the diagnosis and treatment of COVID-19 patients.

Conflict of Interest

The authors declare no conflict of interest.

Supplementary Materials

The Supplementanry data can be found online at: www.aginganddisease.org/EN/10.14336/AD.2020.0502.

References

- [1] The L (2020). Emerging understandings of 2019-nCoV. *Lancet*, 395:311.
- [2] Lu H, Stratton CW, Tang YW (2020). Outbreak of pneumonia of unknown etiology in Wuhan, China: The mystery and the miracle. *J Med Virol*, 92:401-402.
- [3] Guan W-J, Ni Z-Y, Hu Y, Liang W-H, Ou C-Q, He J-X, et al. (2020). Clinical Characteristics of Coronavirus Disease 2019 in China. *New Engl J Med*, in press.
- [4] Chen N, Zhou M, Dong X, Qu J, Gong F, Han Y, et al. (2020). Epidemiological and clinical characteristics of 99 cases of 2019 novel coronavirus pneumonia in Wuhan, China: a descriptive study. *Lancet*, 395:507-513.
- [5] Wang D, Hu B, Hu C, Zhu F, Liu X, Zhang J, et al. (2020).

- Clinical Characteristics of 138 Hospitalized Patients With 2019 Novel Coronavirus-Infected Pneumonia in Wuhan, China. *JAMA*, in press.
- [6] Yang X, Yu Y, Xu J, Shu H, Xia Ja, Liu H, et al. (2020). Clinical course and outcomes of critically ill patients with SARS-CoV-2 pneumonia in Wuhan, China: a single-centered, retrospective, observational study. *Lancet Resp Med*, in press.
- [7] Tian S, Hu N, Lou J, Chen K, Kang X, Xiang Z, et al. (2020). Characteristics of COVID-19 infection in Beijing. *J Infection*, in press.
- [8] Liu K, Fang Y-Y, Deng Y, Liu W, Wang M-F, Ma J-P, et al. (2020). Clinical characteristics of novel coronavirus cases in tertiary hospitals in Hubei Province. *Chin Med J*, in press.
- [9] Ren LL, Wang YM, Wu ZQ, Xiang ZC, Guo L, Xu T, et al. (2020). Identification of a novel coronavirus causing severe pneumonia in human: a descriptive study. *Chin Med J (Engl)*, in press.
- [10] Chen H, Guo J, Wang C, Luo F, Yu X, Zhang W, et al. (2020). Clinical characteristics and intrauterine vertical transmission potential of COVID-19 infection in nine pregnant women: a retrospective review of medical records. *Lancet*, in press.
- [11] Liu Y, Yang Y, Zhang C, Huang F, Wang F, Yuan J, et al. (2020). Clinical and biochemical indexes from 2019-nCoV infected patients linked to viral loads and lung injury. *Sci China Life Sci*, in press.
- [12] Li K, Wu J, Wu F, Guo D, Chen L, Fang Z, et al. (2020). The Clinical and Chest CT Features Associated with Severe and Critical COVID-19 Pneumonia. *Invest Radiol*, in press.
- [13] Yang W, Cao Q, Qin L, Wang X, Cheng Z, Pan A, et al. (2020). Clinical characteristics and imaging manifestations of the 2019 novel coronavirus disease (COVID-19): A multi-center study in Wenzhou city, Zhejiang, China. *J Infection*, in press.
- [14] Hu Z, Song C, Xu C, Jin G, Chen Y, Xu X, et al. (2020). Clinical characteristics of 24 asymptomatic infections with COVID-19 screened among close contacts in Nanjing, China. *Sci China Life Sci*, in press.
- [15] Zhang J-J, Dong X, Cao Y-Y, Yuan Y-D, Yang Y-B, Yan Y-Q, et al. (2020). Clinical characteristics of 140 patients infected with SARS-CoV-2 in Wuhan, China. *Allergy*, in press.
- [16] Wu J, Liu J, Zhao X, Liu C, Wang W, Wang D, et al. (2020). Clinical Characteristics of Imported Cases of COVID-19 in Jiangsu Province: A Multicenter Descriptive Study. *Clin Infec Dis*, in press.
- [17] Huang Y, Tu M, Wang S, Chen S, Zhou W, Chen D, et al. (2020). Clinical characteristics of laboratory confirmed positive cases of SARS-CoV-2 infection in Wuhan, China: A retrospective single center analysis. *Travel Med Infect Dis*, 27:101606.
- [18] Huang C, Wang Y, Li X, Ren L, Zhao J, Hu Y, et al. (2020). Clinical features of patients infected with 2019 novel coronavirus in Wuhan, China. *Lancet (London, England)*, 395:497-506.
- [19] Xu XW, Wu XX, Jiang XG, Xu KJ, Ying LJ, Ma CL, et al. (2020). Clinical findings in a group of patients infected with the 2019 novel coronavirus (SARS-Cov-2) outside of Wuhan, China: retrospective case series. *BMJ*, 368:m606.
- [20] Song F, Shi N, Shan F, Zhang Z, Shen J, Lu H, et al. (2020). Emerging 2019 Novel Coronavirus (2019-nCoV) Pneumonia. *Radiol*, 295:210-217.
- [21] Xu X, Yu C, Qu J, Zhang L, Jiang S, Huang D, et al. (2020). Imaging and clinical features of patients with 2019 novel coronavirus SARS-CoV-2. *Eur J Nucl Med Mol Imaging*, in press.
- [22] Shi H, Han X, Jiang N, Cao Y, Alwalid O, Gu J, et al. (2020). Radiological findings from 81 patients with COVID-19 pneumonia in Wuhan, China: a descriptive study. *Lancet Infec Dis*, in press.
- [23] Shi S, Qin M, Shen B, Cai Y, Liu T, Yang F, et al. (2020). Association of Cardiac Injury With Mortality in Hospitalized Patients With COVID-19 in Wuhan, China. *JAMA Cardiol*, in press.
- [24] Bhatraju PK, Ghassemieh BJ, Nichols M, Kim R, Jerome KR, Nalla AK, et al. (2020). Covid-19 in Critically Ill Patients in the Seattle Region - Case Series. *New Engl J Med*, in press.
- [25] Feng Y, Ling Y, Bai T, Xie YS, Huang J, Li J, et al. (2020). COVID-19 with different severity: A multi-center study of clinical features. *American Thoracic Society*, in press.
- [26] Du RH, Liang LR, Yang CQ, Wang W, Cao TZ, Li M, et al. (2020). Predictors of mortality for patients with COVID-19 pneumonia caused by SARS-CoV-2: a prospective cohort study. *Eur Respir J*, in press.
- [27] Liu W, Tao ZW, Wang L, Yuan ML, Liu K, Zhou L, et al. (2020). Analysis of factors associated with disease outcomes in hospitalized patients with 2019 novel coronavirus disease. *Chinese Med J*, in press.
- [28] Grasselli Giacomo, Zangrillo Alberto, Zanella Alberto, Antonelli Massimo, Cabrini Luca, Castelli Antonio, et al. (2020). Baseline Characteristics and Outcomes of 1591 Patients Infected With SARS-CoV-2 Admitted to ICUs of the Lombardy Region, Italy. *JAMA*, in press.
- [29] Richardson Safiya, Hirsch Jamie, Narasimhan Mangala, Crawford James, McGinn Thomas, Davidson Karina, et al. (2020). Presenting Characteristics, Comorbidities, and Outcomes Among 5700 Patients Hospitalized With COVID-19 in the New York City Area. *JAMA*, in press.
- [30] Simonnet Arthur, Chetboun Mikael, Poissy Julien, Raverdy Violeta, Noulette Jerome, Duhamel Alain, et al. (2020). High prevalence of obesity in severe acute respiratory syndrome coronavirus-2 (SARS-CoV2) requiring invasive mechanical ventilation. *Obesity (Silver Spring)*, in press.
- [31] Melsen WG, Bootsma MCJ, Rovers MM, Bonten MJM (2014). The effects of clinical and statistical heterogeneity on the predictive values of results from meta-analyses. *Clin Microbiol Infect*, 20:123-129.
- [32] Jiang F, Deng L, Zhang L, Cai Y, Cheung CW, Xia Z (2020). Review of the Clinical Characteristics of Coronavirus Disease 2019 (COVID-19). *J Gen Intern Med*, in press.
- [33] de Wit E, van Doremalen N, Falzarano D, Munster VJ (2016). SARS and MERS: recent insights into emerging coronaviruses. *Nat Rev Microbiol*, 14:523-534.

- [34] Wan Y, Li J, Shen L, Zou Y, Hou L, Zhu L, et al. (2020). Enteric involvement in hospitalised patients with COVID-19 outside Wuhan. *Lancet Gastroenterol Hepatol*, in press.
- [35] Mertz D, Kim TH, Johnstone J, Lam P-P, Science M, Kuster SP, et al. (2013). Populations at risk for severe or complicated influenza illness: systematic review and meta-analysis. *BMJ*, 347: f5061.
- [36] Lewington S, Lacey B, Clarke R, Guo Y, Kong XL, Yang L, et al. (2016). The burden of hypertension and association risk for cardiovascular mortality in China. *JAMA Intern Med*. 176:524-532.
- [37] Wang B, Li RB, Lu Z, Huang Y (2020). Does comorbidity increase the risk of patients with COVID-19: evidence from meta-analysis. *Aging*, in press.
- [38] Badawi A, Ryoo SG (2016). Prevalence of comorbidities in the Middle East respiratory syndrome coronavirus (MERS-CoV): a systematic review and meta-analysis. *Int J Infect Dis*, 49:129-133.
- [39] Suryaprasad A, Redd JT, Hancock K, Branch A, Steward-Clark E, Katz JM, et al. (2013). Severe acute respiratory infections caused by 2009 pandemic influenza A (H1N1) among American Indians—southwestern United States, May 1–July 21, 2009. *Influenza Other Respi Viruses*, 7:1361-1369.
- [40] Kuznierz G, Uboldi A, Sosa G, Torales S, Colombo J, Moyano C, et al. (2013). Clinical features of the hospitalized patients with 2009 pandemic influenza A (H1N1) in Santa Fe, Argentina. *Influenza Other Respi Viruses*, 7:410-417.
- [41] Htun NSN, Odermatt P, Eze IC, Boillat-Blanco N, D'Acremont V, Probst-Hensch N (2015). Is diabetes a risk factor for a severe clinical presentation of dengue?—review and meta-analysis. *PLoS Negl Trop Dis*, 9:e0003741.
- [42] Limonta D, Torres G, Capó V, Guzmán MG (2008). Apoptosis, vascular leakage and increased risk of severe dengue in a type 2 diabetes mellitus patient. *Diab Vasc Dis Res*, 5:213-214.
- [43] Dharmashankar K, Widlansky ME (2010). Vascular endothelial function and hypertension: insights and directions. *Curr Hypertens Rep*, 12:448-455.
- [44] Magen E, Feldman A, Cohen Z, Alon DB, Linov L, Mishal J, et al. (2010). Potential link between C3a, C3b and endothelial progenitor cells in resistant hypertension. *Ame J Med Sci*, 339:415-419.
- [45] Didion SP, Kinzenbaw DA, Schrader LI, Chu Y, Faraci FM (2009). Endogenous interleukin-10 inhibits angiotensin II-induced vascular dysfunction. *Hypertension*, 54:619-624.
- [46] Booth CM, Matukas LM, Tomlinson GA, Rachlis AR, Rose DB, Dwosh HA, et al. (2003). Clinical features and short-term outcomes of 144 patients with SARS in the greater Toronto area. *JAMA*, 289:2801-2809.
- [47] Yang JK, Feng Y, Yuan MY, Yuan SY, Fu HJ, Wu BY, et al. (2006). Plasma glucose levels and diabetes are independent predictors for mortality and morbidity in patients with SARS. *Diabet Med*, 23:623-628.
- [48] Allard R, Leclerc P, Tremblay C, Tannenbaum T-N (2010). Diabetes and the severity of pandemic influenza A (H1N1) infection. *Diabetes Care*, 33:1491-1493.
- [49] van den Brand JM, Smits SL, Haagmans BL (2015). Pathogenesis of Middle East respiratory syndrome coronavirus. *J Pathol*, 235:175-184.
- [50] Yang J-K, Lin S-S, Ji X-J, Guo L-M (2010). Binding of SARS coronavirus to its receptor damages islets and causes acute diabetes. *Acta Diabetol*, 47:193-199.
- [51] Wu F, Zhao S, Yu B, Chen Y-M, Wang W, Song Z-G, et al. (2020). A new coronavirus associated with human respiratory disease in China. *Nature*, 579:265-269.