

Lawrence Berkeley National Laboratory

LBL Publications

Title

LBL Computing Newsletter Vol 25 No 2

Permalink

<https://escholarship.org/uc/item/0nh4x0dm>

Author

Lawrence Berkeley National Laboratory

Publication Date

1988-02-01

Copyright Information

This work is made available under the terms of a Creative Commons Attribution License, available at <https://creativecommons.org/licenses/by/4.0/>

DISCLAIMER

This document was prepared as an account of work sponsored by the United States Government. While this document is believed to contain correct information, neither the United States Government nor any agency thereof, nor the Regents of the University of California, nor any of their employees, makes any warranty, express or implied, or assumes any legal responsibility for the accuracy, completeness, or usefulness of any information, apparatus, product, or process disclosed, or represents that its use would not infringe privately owned rights. Reference herein to any specific commercial product, process, or service by its trade name, trademark, manufacturer, or otherwise, does not necessarily constitute or imply its endorsement, recommendation, or favoring by the United States Government or any agency thereof, or the Regents of the University of California. The views and opinions of authors expressed herein do not necessarily state or reflect those of the United States Government or any agency thereof or the Regents of the University of California.

PUB-429

Volume 25, Number 2
February 1988

**L B L
COMPUTING
NEWSLETTER**

TABLE OF CONTENTS

NAMES & NUMBERS TO KNOW 2

Schedules for Computer Classes 3

LBLNET NEWS 4

LBLnet Activity Map - December 1987 4

LBLnet Overview - Block Diagram 5

POSTMASTER'S CORNER 6

HELP DESK 7

NFS System Mount Policy 7

Reminder: Major Update of IMSL Libraries on CSA Cluster 7

NAG, Mark 12, Up Soon on UX1 and UX3 7

IMSL, Version 10.0, is Up on UX1 and UX3 8

Graphics Products to be Moved From CSA2 to CSA1 8

Current Prices for UX1 and UX3 8

NOTES FROM TROUBLE MAIL 9

THE WORKSTATION SCENE 14

RECEIVED
 FEB 17 1988
 Pub file
 LBL LIBRARY

FEBRUARY 1988

PUB-429

NAMES & NUMBERS TO KNOW

From on-site, dial <xxxx> From off-site, dial (415) 486-<xxxx> From FTS line, dial 451-<xxxx>

INFORMATION & COMPUTING SCIENCES DIVISION

Acting Head: Sandy Merola (AXMerola)7440 50B - 2232C

COMPUTING AND COMMUNICATIONS RESOURCES

Head: Ken Wiley (KGWiley)7083 50B - 2258E

Office of Computing Resources:

Dave Stevens (DFStevens)7344 50B - 2258F

LBLnet Manager: Sig Rogers (SGRogers)6713 50B - 2258G

Telephone Services: Sam Gibson (FSGibson) .4234 80A - 103

ADVANCED DEVELOPMENT PROJECTS

Head: Dennis Hall (DEHall)605350B - 3238

WORKSTATION GROUP

Group Leader: Richard LaPierre (RLLaPierre)....4692.....50B - 2245

Software Evaluation & Acquisition.....6858 50B - 2231

COMPUTING SERVICES

Head: Marv Atchley (FMAtchley)5455 50F - 104

Asst.Head: Serge Polevitzky (SIPolevitzky) ..4389 50F - 142

Central Office.....5871,2 50F - 106

VMS SYSTEM

Eric Beals (ERBeals)5351 50F - 143

System Manager (GPJohnson)6211 50B - 1225

UNIX SYSTEM

Dave Cleveland (DHCleveland)5336 50F - 115

System Manager (RJCocharan)5565 50F - 127

DISTRIBUTED PRINTING

Bob Rendler (RERendler)562950F - 119

System Manager (RJCocharan)5565 50F - 127

USER RESOURCES

Jerry Borges (JTBorges)5568 50F - 144

Accounting.....7008 50B - 1232A

HELP DESK.....5981 50B - 1272

Math Libraries4749 50F - 114

Library/ Document Sales.....6919 50B - 1232C

Opening a New Account (PSBean).....7008 50B - 1232B

UNIX and Cluster

Software Evaluation & Acquisition.....5568 50F - 144

COMPUTING FACILITIES

Connecting a Remote Terminal (ACHart)....7444 50B - 2249A

Graphics6945 50F - 126

Network Coordinator (WDJaquith)4388 50F - 109

COMPUTING FACILITIES (Continued)

Operations Area6211 50B - 1215

Develcon Problems & Terminal Repair

(PGMurray).....5354 50B - 2259

COMPUTING APPLICATIONS

Applications Group

Head: Jerry Borges (JTBorges).....5568 50F - 144

CENTRAL ELECTRONIC MAIL FACILITY

FIRST INITIAL-MIDDLE INITIAL-LAST NAME is the standard recipient format in Lab-wide mailing address.

Examples: VMS: lbl:JASmith

UNIX: JASmith@lbl.gov

Software Tools: JASmith@lbl.gov

DEVELCON

DEVELCON Access Names

[VAX 8650's (GENERIC)CSA]

VAX 8650 (VMS)CSA1

VAX 8650 (VMS)CSA2

VAX 8650 (VMS)CSA3

VAX 8650 (VMS)CSA4

VAX 8650 (VMS)CSA5

SUN-3 / 280 (UNIX1).....UX1

SUN-3 / 180 (UNIX3).....UX3

Dial-up Access Numbers

All Machines - 300 BPS 486-4959

All Machines - 1200 BPS 486-4979

All Machines - 2400 BPS 486-4969

Local TYMNET Access Numbers for DEVELCON

	1200 bps	2400 bps
Oakland	430-2900	633-1896
Walnut Creek/Concord	935-0370	935-1507
San Francisco	974-1300	543-0691
Santa Clara	408-980-8100	986-0646
Palo Alto	415-366-1092	361-8701
Vallejo	707-644-1192	
Antioch	754-8222	
Fremont	490-7366	
Pleasanton	462-2101	

MFE Consulting Number is 422-1544

This document was prepared as an account of work sponsored by the United States Government. Neither the United States Government nor any agency thereof, nor The Regents of the University of California, nor any of their employees, makes any warranty, express or implied, or assumes any legal liability or responsibility for the accuracy, completeness, or usefulness of any information, apparatus, product, or process disclosed, or represents that its use would not infringe privately owned rights. Reference herein to any specific commercial products process, or service by its trade name, trademark, manufacturer, or otherwise, does not necessarily constitute or imply its endorsement, recommendation, or favoring by the United States Government or any agency thereof, or The Regents of the University of California. The views and opinions of authors expressed herein do not necessarily state or reflect those of the United States Government or any agency thereof or The Regents of the University of California and shall not be used for advertising or product endorsement purposes.

SCHEDULES FOR COMPUTER CLASSES

IN THE TRAINING ROOM, BLDG. 50B, RM. 1237

or

IN THE BUILDING 50F CONFERENCE ROOM

Jerry Borges

The following computer classes are to be offered by Computing Services. There is no charge for these classes. To enroll, obtain your supervisor's approval and then contact Pat Bean (x7008).

If you have questions about what's being offered, or suggestions for other computer-oriented topics, contact Jerry Borges (x5568).

DATE	TIME	DESCRIPTION	INSTRUCTOR
Feb 18, 25	1 - 3 PM	Introduction to VAX/VMS	Marty Gelbaum
Feb 11	11 AM - NOON	Electronic Mail: Comprehensive	William Jaquith
March 9, 11, 16, 18	1 - 3 PM	C Programming	Marty Gelbaum

IN THE MAC TRAINING ROOM, BLDG. 50B, RM. 1229

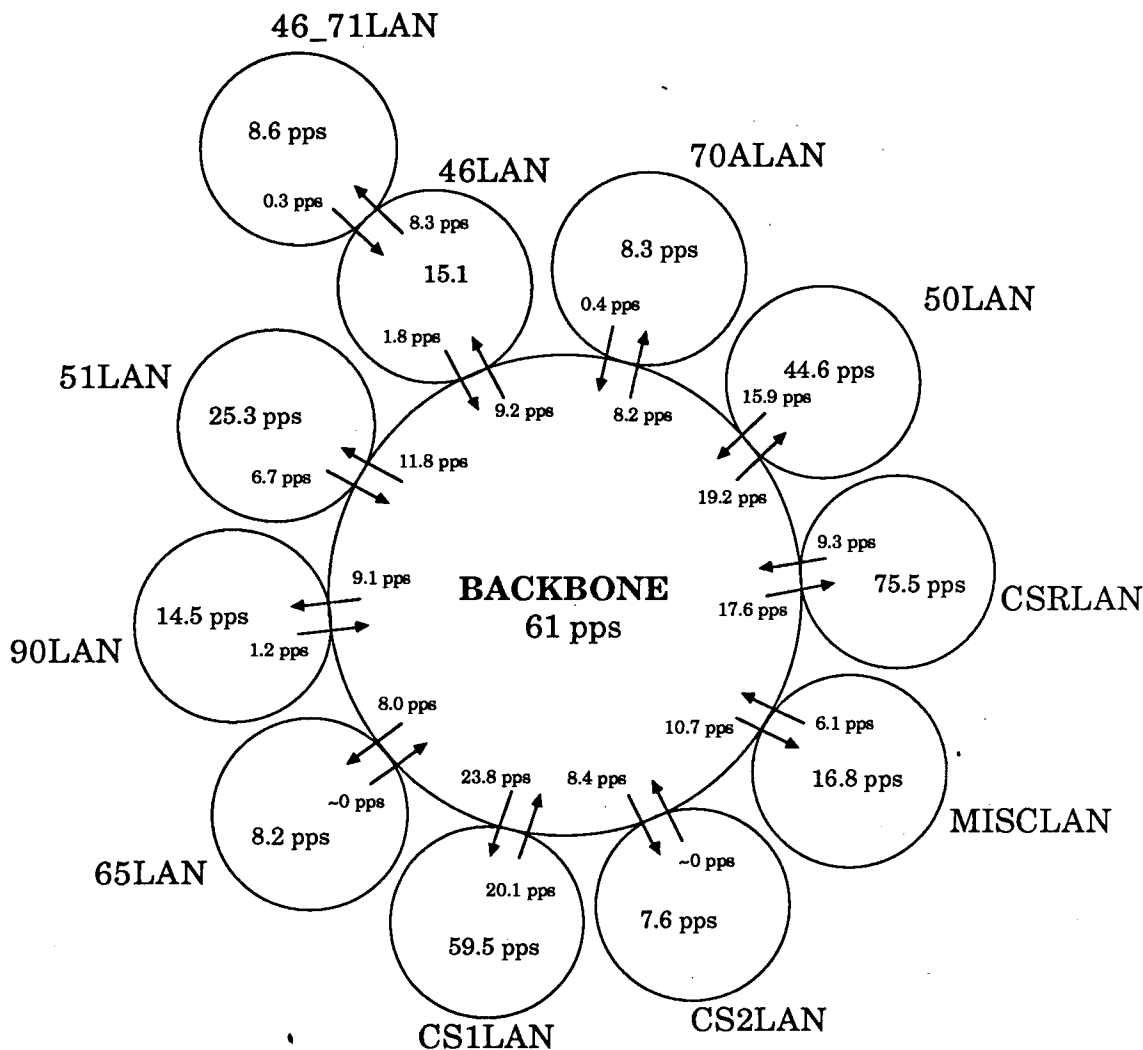
Carole Casaretto

The following computer classes will be offered by the Workstation Group. There is no charge for these classes. To enroll, obtain your supervisor's approval and then contact Carole Casaretto, (x6858). Those classes with asterisks (*) appended are already full.

Call now to sign up for classes later in the year. For more information, see THE WORKSTATION SCENE in this Newsletter. If you have any questions regarding these classes or suggestions for other computer-oriented topics, contact Richard LaPierre (x4692).

DATE	TIME	DESCRIPTION	INSTRUCTORS
Feb 8, 10, 12	1 - 3 PM 3 - 5 PM	Beginning Excel Spreadsheet	Nancy Travis, Carole Casaretto Claudia Madison, Dana Conant
Feb 16, 18, 23, 25	1 - 2:30 PM 3 - 4:30 PM	Beginning MS WORD 3.01*	Karla Savage, Carole Casaretto Claudia Madison, Jean Wolslegel
Feb 17	10 AM - NOON	Using Your MAC as a Terminal	Cliff Stoll
Feb 24	10 AM - 11 AM	Introduction to HyperCard	Bill Brown
Mar 16	1 - 3 PM	Beginning Excel Charts	Nancy Travis
Mar 22, 24, 29, 31	1 - 2:30 PM 3 - 4:30 PM	Beginning MS WORD 3.01*	Karla Savage, A.Soulsburg Claudia Madison, Jean Wolslegel
Apr 12, 14, 19, 21	1 - 2:30 PM 3 - 4:30 PM	Beginning MS WORD 3.01	Karla Savage, Carole Casaretto Claudia Madison, Jean Wolslegel

LBLNET NEWS



pps = packets per second; all figures are monthly averages

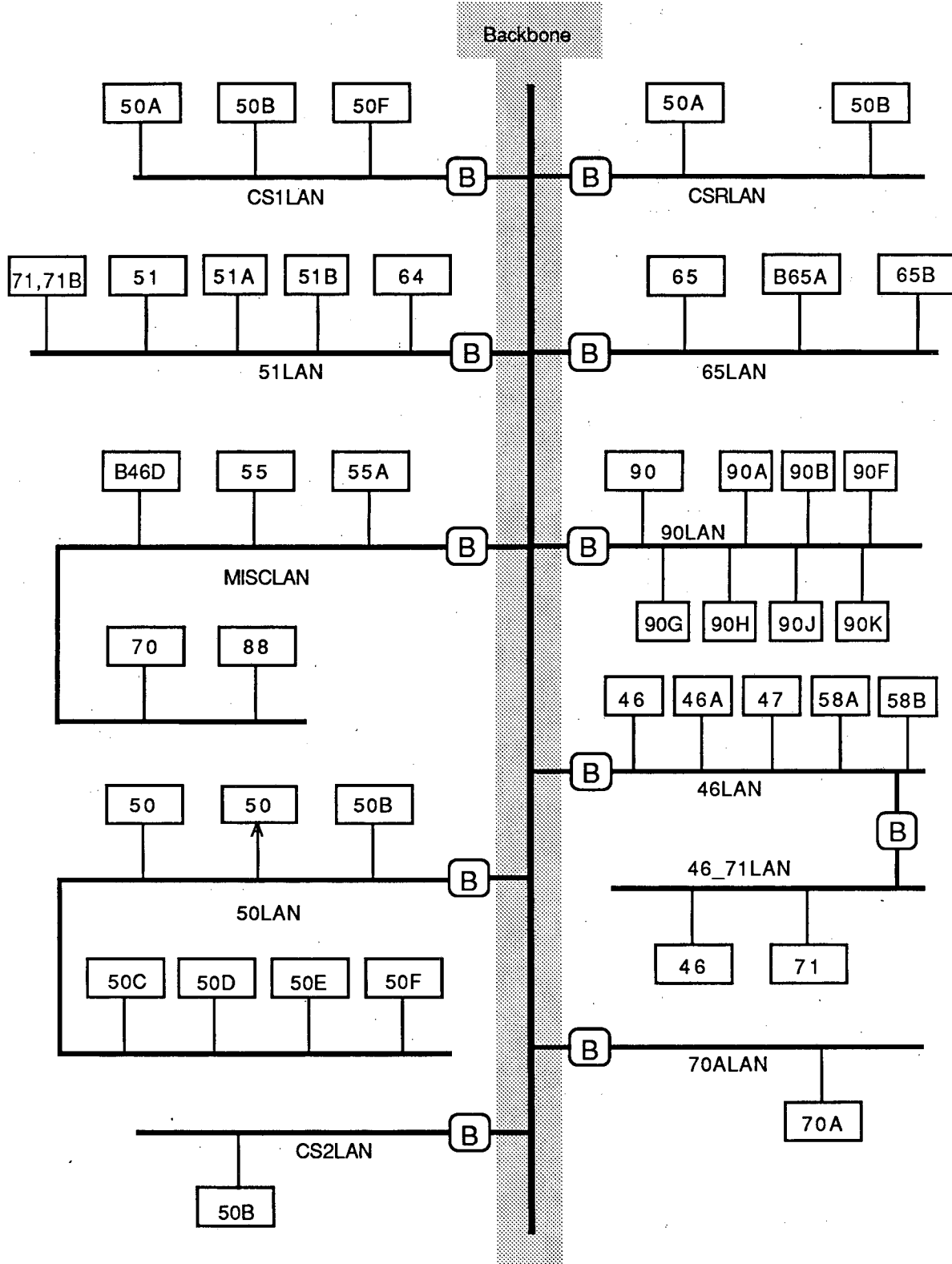
arrows represent packet flow through a LanBridge from one LAN to another

Note: Each ellipse shown above is a separate Ethernet that is interconnected to the others via Digital LanBridge-100 devices that provide forwarding of packets based on a learning algorithm that minimizes traffic between networks to those packets addressed to computers on another Ethernet.

LBLnet Activity December 1987

ICSD/CCR Fink/Rogers

LBLNET NEWS



B DEC LAN Bridge 100

Lawrence Berkeley Laboratory - LBLnet
Overview - Block Diagram
 Ted Sopher / CCR
 January 15, 1987

POSTMASTER'S CORNER

William Jaquith

This is the Postmaster's Corner. We'll answer frequently-asked Electronic Mail questions here.

You can also get answers to your Electronic mail questions by sending them to Postmaster or PostOffice on the CSA cluster.

This month there will be one Electronic Mail class offered. (See Page 3 of this Newsletter). The first part of it is introductory and the second part will cover further topics.

Q UESTION: Where can I find information and help about the electronic mail facilities available at LBL?

A NSWER: There is a free document in the Computing Services Library for LBL electronic mail users. Ask for "Electronic Mail - Class Notes". This document will give you a step-by-step introduction to the three principal Computing Services mail systems: VMS Mail, Software Tools - MSG, and UNIX Mail.

Each mail system has HELP available on-line.

VMS MAIL

There is HELP at the DCL level. Look at the following topics:

-- MAIL -- offering help on the standard VMS Mail utility. Type

CSA> help mail

-- Mail_Local -- answering questions about different networks that are available, what addresses to use, how to forward mail, etc. Type

CSA> help Mail_Local

When you are inside VMS Mail (at the MAIL> prompt) you can also get HELP. Type

MAIL> help

MSG (Software Tools Mail)

HELP can be found using HELP at the DCL level. Also there is a MANual entry for MSG. At DCL issue the 'man msg' command for HELP.

CSA> help msg or

CSA> man msg

When you are in the MSG (at the -> prompt), there is HELP available by typing a '?'.
-> ?

UNIX MAIL

HELP can be found using the MAN command and by typing a question mark when in the Mail Utility. Recall that UNIX mail does not have a prompt.

UX1> man mail

?

N OTA BENE: Users of the file \$forward., (used to move mail from MSG to VMS Mail or to forward mail to a different computer) should remember that the file can include only one entry (a second entry can be made but will not be used). The entry to move mail from MSG to VMS Mail is

+userid (For example, +robert)

If you are using the entry to forward mail to another computer the entry should be

userid@computer.network

Here are some examples:

kris@ux1.lbl.gov

tony@bevax.hepnet

smithson@ucbcmsa.bitnet

- o There should be no "+" signs in the entry,
- o there should be no spaces or tabs, and
- o only one entry is used (I have included several examples for information).
- o Domains should be used for reliable delivery.

... Hermes - PostMaster

Forward comments or queries to William Jaquith (x4388) or

VMS Mail: lbl::Registrar

UNIX or

Software Tools Mail:

Registrar@lbl.gov

HELP DESK

NFS SYSTEM MOUNT POLICY

Dave Cleveland

We are unable at this time to export our NFS file systems to other Divisions' UNIX systems. Such an action would create serious security problems.

If Sun Microsystems, Inc. provides additional security features for its operating system, we will investigate the possibility of exporting our NFS file system to remote systems at that time.

Forward comments and questions to Marv Atchley (x5545) or

VMS Mail: lbl::FMAtchley
 UNIX or
 Software Tools Mail: FMAtchley@lbl.gov

REMINDER: MAJOR UPDATE OF IMSL LIBRARIES ON CSA CLUSTER

Marty Gelbaum

As noted in the January 1988 LBL Computing Newsletter, the CSA cluster copy of the IMSL Fortran mathematical and statistics libraries has been updated to Version 10.0. Please note that the new library uses a **NEW SUBPROGRAM NAMING** convention **AND** that the **LINK** command is different. See the on-line HELP article **MATH_LIBRARIES IMSL** for details.

NOTA BENE: as stated in the January newsletter, the old version of IMSL will **NOT** be available **AFTER** February 11, 1988. Any programs that were **LINKED** with the old library will continue to run; if they have to be re-linked, you will have to use the new version 10.0 library.

Forward comments and questions to Marty Gelbaum, (x4749), or

VMS Mail: lbl::M_Gelbaum
 UNIX or
 Software Tools Mail: M_Gelbaum@lbl.gov

NAG, MARK 12, UP SOON ON UX1 AND UX3

Marty Gelbaum

UX1 and UX3 currently have Mark 11 of the NAG library; this will soon be updated to Mark 12, which is already installed on the CSA cluster. However, the link command shown below will be the same for Mark 12.

The NAG library has been compiled with the **-ffpa** option to generate in-line code for the Sun Floating-point Accelerator. To link to the NAG library, type

```
% f77 -ffpa [-options] filename.f ... -lnag
```

DOCUMENTATION

NAG Fortran Library Manual (Mark 11) explains how each of the subroutines in the library is used. The manual is available in loose-leaf binders.

You can order the NAG reference manual from the Computing Services Library (Bldg. 50B, Rm. 1245, x4242). One copy is available for reading at the **HELP DESK** (Bldg. 50B, Rm. 1232, x5981). An extensive effort has been made to test NAG on the SUNs. However, if you encounter problems executing your programs, send mail to:

trouble

or contact the **HELP DESK**.

Forward comments and questions to Marty Gelbaum, (x4749), or

VMS Mail: lbl::M_Gelbaum
 UNIX or
 Software Tools Mail: M_Gelbaum@lbl.gov

IMSL, VERSION 10.0, IS UP ON UX1 AND UX3

Marty Gelbaum

Version 10.0 of the IMSL library of FORTRAN mathematical and statistical subprograms has been installed on UX1 and UX3.

This is the same version as on the VMS CSA cluster. The IMSL library has been compiled with the `-ffpa` option to generate in-line code for the Sun Floating-Point Accelerator. To link to the IMSL library, type

```
f77 -ffpa [-options] filename.f ... -limsl
```

for BOTH the single and double precision libraries.

You can order the IMSL reference manual from the Computing Services Library (Bldg. 50B, Rm. 1245, x4242). One copy is available for reading at the HELP DESK (Bldg. 50B, Rm. 1232, x5981),

or contact the HELP DESK.

An extensive effort has been made to test IMSL on the SUNs. However, if you encounter problems executing your programs, send mail to:

trouble

or contact the HELP DESK.

... *DISSPLA, TELL-A-GRAF, etc.*

GRAPHICS PRODUCTS TO BE MOVED FROM CSA2 TO CSA1

Marty Gelbaum

TELL-A-GRAF, DISSPLA, and other graphics products supplied by Computer Associates (formerly ISSCO) will be moved to CSA1 from CSA2 on March 1, 1988.

This means that

- users can compile, link and run programs that use DISSPLA only on CSA1 -- and
- the FOCUS-to-TELL-A-GRAF interface will now be available on both CSA1 and CSA4.

Forward questions and comments to Claudette Lederer (x6945) or

VMS Mail: **lbl::CELederer**
 UNIX or
 Software Tools Mail: **CELederer@lbl.gov**

CURRENT PRICES FOR UX1 & UX3

Lam Hing Wong

Following are the latest charges for UX1 and UX3 -- the two new Sun UNIX systems.

UNIX CPU COMMITTED PRICES

	UX1	UX3 ¹
Prime Time		
Interactive	\$90/hr	\$45/hr
Background	\$90/hr	\$45/hr
Non-Prime		
Interactive	\$45/hr	\$27/hr
Background	\$ 5/hr	\$ 3/hr

UNIX CPU UNCOMMITTED PRICES

	UX1	UX3
Prime Time		
Interactive	\$144/hr	\$72/hr
Background	\$144/hr	\$72/hr
Non-Prime		
Interactive	\$72/hr	\$36/hr
Background	\$ 8/hr	\$ 4/hr

DISK	Committed	Uncommitted
	\$12/MB/Month	\$24/MB/Month

Note that committed users are given a favorable rate.

Forward comments and questions to Lam Hing Wong (x4786) or

VMS Mail: **lbl::LHWong**
 UNIX or
 Software Tools Mail: **LHWong@lbl.gov**

¹ Differences in charges are related to speed of machine. UX1 is twice as fast as UX3.

NOTES FROM TROUBLE MAIL

Maggie Morley

Starting with this issue, we are including a sampling of typical exchanges from our on-line UNIX and VMS trouble mail facilities.

MESSAGE: Is CSnet available on these machines, and if so, how can we access it?

RESPONSE: CSNET is available as a domain in the internet community. The address will be

xxx@relay.cs.net or
userid%site@relay.cs.net

I would have to see an address to know how to send mail there.

MESSAGE: I wish to receive a long computer program via bitnet, from an associate in Germany. He is ready to send it, but I don't want the program to arrive into my mail facility all broken up into 20-line hunks with Vax-inserted messages saying "press return, etc." (i.e., I would like to receive it as a completely unmolested file, exactly as transmitted from beginning to end.) How should this be sent? What should I tell my German friend, (special instructions?). What, if any, special preparations do I need to make to my system? (I know that my allotted Vax file space is adequate). Thanks.

P.S.: maybe the file is received all OK? Maybe the "press returns" are inserted only when I read my mail on a 20-lined terminal? So maybe there's nothing special to do?

RESPONSE: The Bitnet provides for 2 services: one is mail and the second is file transfer. The choice of services used is based on how the person at the initiating side uses Bitnet. A VMS Bitnet site can use `bsend/file` (or `send/file`) or VMS Mail, `jnet%"..."`, (or `sndmsg` here at LBL) and send a file or send mail.

IBM sites have similar choices (sometimes `NOTE` for mail and `SEND` for files).

Mail messages DO NOT have the 20-line spacing and other commands embedded in them if you move them to your file space for printing or editing. `NOTE`: the mail system will use Internet services which have a size limitation of 100 Kbytes. Files can be sent in the Bitnet. They can ONLY be sent and received on the CSA2 computer (where the JNET software is installed). `NOTE`: the Bitnet asks for a size limitation of 300 Kbytes.

MESSAGE: groff does not work on UX1????
I thought it had been fixed????

RESPONSE: I called the user; the problem was that she was using a non-standard path that did NOT include `/usr/localhost`, as should all paths on the SUN UNIX machines. She fixed her `.cshrc` files and she's happy again.

MESSAGE: I'm trying to format a file with LaTeX, and the job is not completed because the program runs out of memory. The program tells me at the end that "if you really absolutely need more capacity, you can ask a wizard to enlarge me". Can you help me?

RESPONSE: Please let me know the name and location of the LaTeX file that's giving trouble and I'll try to help you.

You should look at pages 125-128 of the LaTeX User's Guide and Reference Manual by Leslie Lamport; these pages contain excellent tips on how to pinpoint the problem when you see such error messages. For example, there is a limit of 300 characters for the text of captions, as explained by in the LaTeX guide, page 177; if you exceed it, you'll see error messages like the one you describe.

MESSAGE: I am having trouble activating image MONITOR -- no privilege for attempted operation. Has something broken? Or am I doing something wrong when I type in something like:

```
$ monitor cluster
$ monitor system
$ monitor process/topcpu
ETC?
```

Thanks . . .

RESPONSE: You've been accustomed to the MONITOR facility -- it displays several operating system parameters on a VT-100 style terminal.

We have disabled Monitor because it gives misleading information in a variety of circumstances. It's been replaced with the CSALOAD facility, which gives essentially the same information.

CSALOAD will tell you how many folks are logged into each of the five LBL Vaxes, how many batch processes are running, the average job priorities, and the average loads on each Vax. These averages are computed and displayed for

*the past one minute, five minutes, and 15 minutes.
Try it -- you may be surprised how useful it is. Cheers!*

MESSAGE: Hello. I am often interested in finding out when a user has recently logged-on. This utility is provided in 'finger' on regular Unix machines. I have tried using a similar utility on CSA-VMS system but the information of last login is always wrong. Is there an alternative?

RESPONSE: *Such a program is not currently available on the CSA cluster, so far as I know. I'd suggest direct communication with your friends to find out when they last logged in.*

MESSAGE: I have a microVAX workstation with a large screen. I often login to the CSA machines and edit remote files, etc. When using the keypad editor, I cannot seem to take advantage of the large screen size I have.

That is, though I may have 54 lines or more on my terminal, the keypad editor insists on limiting me to 24. is there any way to inform the keypad editor of the size of my terminal screen?

RESPONSE: *The EDIT/TPU and LSE editors can make use of larger pages and widths. You must use SET TERM/PAGE=nn/WIDTH=nnn before entering these editors. If you still are having a problem give me a call. I also have a VAXstation with a large screen and regularly use page sizes of 54 and 64 lines.*

MESSAGE: Marty, Could we get macpr or its equivalent on UX1?

RESPONSE: *macpr is now available on UX1.*

P.S. If you wish to use it, TeX is available on UX1 too.

MESSAGE: Why do I get notices, at login, of new software tools messages, when, in fact, there are no new messages. In the past I believe reading a message changed its status from new to old. As it is now, valuable time is wasted checking for real new messages following every login.

RESPONSE: *You are getting the notification of new mail because messages 50-60 in your MYMAIL file are marked as NEW.*

Reading the message changes the status from NEW to OLD, but you must exit MSG gracefully to update the status stored in the MYMAIL file. My guess is that you have been using the 'Q'uit command (which does not update the file) instead of the 'E'xit command, which does

update the file.

MESSAGE: Does kermit reside on unix1?

RESPONSE: *Yes. I used it to transfer a text file between my Macintosh and UX1; the file transfer worked fine in both directions.*

MESSAGE: Do we have a fortran-to-C translator on the cluster? Thanks.

RESPONSE: *I don't know of anything on the cluster to translate Fortran to C. There is a commercial product -- FORTRIX -- available from Rapitech Systems; it costs \$6480 for a VAX 8650.*

MESSAGE: Hi! I recently received a message from a colleague at the High Energy Group at the University of Rochester -- it was on Bitnet via LBL. I have not been able to send a reply. All my messages come back. I presume the problem is because the University of Rochester is on Hepnet and I don't have the correct address format to access them. I didn't have much luck sending iot straight to URHEP either. I wonder if you could tell me how to send a message to them. Regards. . .

RESPONSE: *There is a machine on the BITNET named UORHEP that the table describes as University of Rochester High Energy Physics. You should be able to send mail to that machine just as you send mail to other BITNET sites.*

MESSAGE: Dear Sir: I've drawn some figures using DISSPLA. Could you tell me how to get hardcopies of these figures, either by IMAGEN or TALARIS. Thanks for your earliest attention . . .

RESPONSE: *If you have already made up a Fortran program that successfully links with DISSPLA, I'd suggest the following:*

- *Get the most modern version of DISSPLA by invoking SETUP_NEWPLA (After you have used the command ISSCO).*
- *Put the Fortran statement*
CALL IMA300 (for the IMAGEN)
or
CALL TALARS (for the TALARIS)
(Yes, use the word TALARS, NOT TALARIS) in your Fortran program BEFORE you call any other DISSPLA routines.

- Then, after you compile your program with FORTRAN, link it by
LINK PROGRAM, 'DISSPLA'
- Then, run the program.
- If you called IMA300, the program will generate a file IMAGEN.IMP, which you can print on an IMAGEN (say, IP2) by
IPR -pip2 imagen.imp
- If you called TALARS, the program will generate a file TALARIS.DAT, which you can print on a TALARIS by
PRINT TALARIS.DAT

MESSAGE: Dear Trouble, Could you please provide me with a file access proxy from THISUSER to CSA. I have an account on the CSA cluster. My username is THATUSER. I want to be able to set host THISUSER. What else do you need to know?

RESPONSE: I guess we have a misunderstanding about some of the network services. If you have an account on THISUSER, you can SET HOST THISUSER without any additional SYSTEM information or entries.

Other network services allow easy modification of files from the remote node. This service requires an entry in a SYSTEM database and is referred to as PROXY FILE ACCESS. If you have Proxy File access established, the remote user can Read, Write, and Delete your files without having to use a 'fully qualified access control' string. That is, with Proxy File access, you do not have to specify a username and password. It is for this service that I need the remote node and username on that node and then the username on the CSA node.

MESSAGE: What is the maximum size of a mail file? I am using the VAX/VMS mail. When I received too long a file, it shows up in the main directory with an incredibly long file name!!! Thanks . . .

RESPONSE: VMS Mail is limited only by your disk quota.

The files that you are seeing with the name MAIL\$.MAI are files that are greater than 3 blocks in length. VMS Mail is stored as an indexed file when less than 3 blocks in length; if a mail message is greater than 3 blocks, it is stored as a sequential file and renamed as you see.

The recommended way to move these long files from your top-level directory is to use the command

```
SET MAIL_DIRECTORY [MAIL]
```

from within VMS Mail. This command will move all your mail messages down into a sub-directory and you will not see them. The mail messages are STILL all available to you in VMS Mail.

There is help available on-line from within VMS Mail. The December issue of the Computing Services NEWSLETTER also discusses this question. See also the VAX/VMS Mail Utility Reference Manual, Pg. 15.

Some mail systems do have size limits: MSG is 100k bytes; the Bitnet is 300k bytes.

MESSAGE: I often want to use the "talk" command with my logged-in pals on the same Unix. I recently discovered that "talk" works between ux1 and ux3. However, the standard "who" command does not list the people on the opposite machine. Is there some way to get a more universal "who" to cover both machines?

RESPONSE: This may not be the most elegant solution but it will work:
finger @ux1 @ux3

MESSAGE Could you please increase my disk quota for printing on the imagen? I think 2Kb would be enough. Thank you.

RESPONSE: Sir: Nobody has a "disk quota" for the Imagen. However, I'm sure you mean that you want to print 2Kb-size files on some Imagen. Please let me know the name of the Imagen - IP5 or whatever. Further, I want confirm that "2Kb" means 2 thousand VMS blocks or 1 Megabyte. Please correct me if that's wrong. Thanks.

MESSAGE: We are one of MHEPNET(PHYSNET) node. But we have no BITNET node address. Sometimes we received mail sent by BITNET user via LBL. I wonder if the reverse is also true. Is there a way for us to send mail to users of BITNET nodes. Could you tell us whether it is possible or not, and, if so, how to realize it?

RESPONSE: If you use the REPLY command you should be able to reply to the BITNET mail you receive. To send BITNET mail, use a VMSmail address like LBL: "username@nodename.BITNET".

Please note that this service is only provided to members of the HEP community, and do not abuse it for large file transfer, etc.

MESSAGE: HI, WOULD YOU SEND ME INFO ON BEVAX1 SYSTEM COMMANDS TO SAVE, COMPILE, RUN TEX FILES? I HAVE THE BASIC MANUALS BUT THEY ARE NON-SPECIFIC IN THIS REGARD. THANKS,

RESPONSE: I have forwarded your message to the system manager of the BEVAX computer so that he or she can give you how to use TeX on the BEVAX computers. On the CSA computers, you can type

HELP TEX

to get information on how to compile and print TeX files on the CSA cluster. However, that information does not necessarily apply to the BEVAX computers, which are configured and managed by a different group of people. Good luck.

MESSAGE: I got a command execution ACCESS DENIED MSG when I tried to query to see if someone was logged-in at LBL. I wrote a node query exec which tells me if a friend is logged-on at another node. It works for other nodes, but I get that weird msg when I query johnuser at LBL. Can I get access, or could you tell me the problem? Thank you.

RESPONSE: LBL has elected to turn off the acceptance of arbitrary commands from network/Bitnet sites. This is due to hackers/abusers out in the network using these type of services to find valid userid's and then coming back and attempting to break into user accounts. Exceptions to this rule are made for valid users with needs to run network commands here at LBL.

MESSAGE: Hi: Could you tell me how often my files are backed up and/or where I can find this information? Thank you.

RESPONSE: Your files are ****NEVER**** backed up. Use the local command

CSA> diskpace

to find your disk storage allotment and class. You have elected to use the NEVER backed up service. There are two other classes of disk backup service: DAILY and WEEKLY. Many people elect to use a combination of all three services to economically insure their file existence.

MESSAGE: Is ADA available on the cluster anywhere? If not, might it be available soon?

RESPONSE: Hi! We do not now support ADA on the cluster; you are the first to request it. The VAX ADA License costs \$57,519 for a Vax 8650. [By contrast, the Fortran compiler costs \$7,161]. Sad to say, it's hard to

get this kind of cash together.

If you think we should be getting ADA, contact your CSAC representative, or tell us more about it (why should we get it? How many people will use it at LBL? Which projects will benefit? Are there alternatives? Is it likely to be heavily used in the next few years? etc).

We're trying to give our users the best support possible, and to spread our few software license dollars where they'll do the most good. We're always interested in new languages & tools. When there's a demand for ADA, we'll do our darndest to get it. Cheers!

P.S. By the way, ADA on the SUN Unix systems costs \$5,000.

MESSAGE: There used to be an entry in the help file that would tell you which imagen printers (Bldg and Room number) corresponded to what ip#s.

Could you replace that entry or give me list of the imagen printers, numbers and locations?

RESPONSE: See the VMS HELP article LASER-PRINTER, as noted in the USER INTRO to the LBL Central Computing Facility, page 9. "LASER-PRINTER" was chosen because we now have many Apple LaserWriters and will probably obtain other non-IMAGEN laserprinters in the future.

Sorry for any inconvenience.

P.S. The VMS HELP article LASERPRINTER has been on-line for close to one year.

MESSAGE: I tried to send a VMS mail message to freduser@msuncl.bitnet. Someone told me I should use the address "csa2::st%"freduser@msuncl.bitnet"". I get a parsing error message. What am I doing wrong? Is there a write up on mail systems at LBL that you can send me?

RESPONSE: Mail can be sent to Bitnet addresses from the CSA cluster:

MSG Mail - freduser@msuncl.bitnet

VMS Mail - st%"freduser@msuncl.bitnet"

The address that was suggested to you would work from a node outside of the CSA cluster.

Please check with the Computer Services Library for the handout on electronic mail. There is on-line information available in VMS HELP Local_Mail.

MESSAGE: I just heard about the Notes facility today and tried to use it. I was immediately informed that my TPU section must be rebuilt. After an hour or so involving using Vax Notes on the Fermilab Vax I have determined that it is the main system EVE TPU section that needs to be rebuilt. The release notes also indicate this. I have no idea how to do it, but I am sure that SYSPRV is needed to rebuild the system wide EVE TPU section.

To summarize: I can use Notes on the FNAL Vax, but it bombs out here.

RESPONSE: *Hello fellow Notes user! Seems that when you tried Vax Notes, you got the message, "TPU Section needs rebuilding" or somesuch. Foo. I'll bet you a bag of microwaved popcorn that the Notes facility will work properly for you if you try it from CSA3. It looks like the notes interface dumps you into TPU from the other cluster nodes.*

Basically, here's the problem: we can only afford the license fee for Notes on one of our cluster nodes (it's about \$5,000 or \$10,000 per node). It's licensed and installed on CSA3. It looks like we hiccupped when we re-installed the package, since it should be completely unavailable on the other nodes, rather than available and broken, as it is now.

We'll check this out and see what can be done. Meanwhile, try Notes from CSA3 and tell us your reaction. Cheers!

If you want wider distribution of your comments or questions, we encourage you to send them to trouble since it is seen by a wide range of people, including Divisional management.

To use TROUBLE, enter the VMS, Software Tools, or UNIX mail system and send mail to the address

trouble <cr>

We won't, of course, include any user's name in the exchanges. . . . Ed.

THE WORKSTATION SCENE

[25.2.1].....

• WORKSTATION GROUP ELECTRONIC MAIL

Workstation Group members can now be reached from the VMS cluster or the Computing Division's UNIX machines by sending mail to

VMS Mail: lbl::WKSG

UNIX or
Software Tools Mail: WKSG@lbl.gov

We hope this alternative (to the telephone) will be of assistance to users who have problems or would like to forward helpful hints.

[25.2.2].....

• WE WELCOME YOUR INPUT

If you are a regular reader of the Workstation Scene you already know that we print lots of newsy items -- announcements, evaluations, critiques, helpful hints, warnings -- sent to us by Workstation users. It goes without saying that you (our readers/correspondents) are a valuable resource. We'd like to see more of your contributions to this section.

We encourage you to send us (to one of the electronic addresses above) any Workstation-related news items you'd like to share with fellow users.

Remember, folks, this is a family show. The more you contribute, the more everybody profits.

[25.2.3].....

• YET ANOTHER FORMS PROGRAM

... from Mike Bell, Electronics, Engineering Division

FORMWORX is easy to use and comes with several sample forms. It runs under IBM DOS and prints on the LaserJet as well as on dot matrix printers. There is a current update that allows both input of user data and form setup data at the same time. Form data can also be set up to merge directly into a database type program.

For more info, contact Mike Bell (x6181).

[25.2.4].....

• PC VIRUS LOOSE

Several articles have appeared lately in the local papers talking about a Christmas greeting program which caused considerable problems when it saturated an IBM mainframe network worldwide. While it did no real damage to data, there is a program recently discovered in the PC world which, unfortunately, does do real damage. It is called a

virus because, like a real virus, it replicates itself before destroying its host. It can hide effectively until it has managed to copy itself four times to other disks, either hard or floppy, after which it destroys ALL data (files, directories, FAT tables and Boot tracks) on all writeable disk drives on the machine it is on. None of the data can be recovered by any use of Norton or Mace utilities - it is GONE forever. The program with the virus hidden inside is "command.com". This program is on every bootable PC disk (and many other ones as well). The 'infected' version has been found at several universities in the East but has the potential to spread wildly through user groups and even over networks. It can be identified in two ways.

- First, when it copies itself to another disk, the copy has the current date instead of the original date. (Size remains the same as the original).
- Second, since it tries to copy itself, thereby infecting a new disk, any read operation (TYPE, COPY, DIR, etc.) that results in a WRITE PROTECT ERROR on a write-protected disk is a giveaway that something strange is being attempted.

Be warned! Be careful with unknown floppy disks, especially if they're retrieved from Bulletin Boards. This program is one of the worst ones we have heard about. For more information, contact the Workstation Group (x6858).

[25.2.5].....

• MOVING DATA BETWEEN IBM AND MACINTOSH

Users often need to move files between MACs and PCs. The Workstation Group recommends these two good ways to do this.

- We have a 5.25 inch 360K IBM type floppy drive attached to a MAC II. You can easily copy ASCII files from one to the other.
- We have a program called TOPS running over an Appletalk network. You can copy low- or high-density diskettes on the IBM to or from the MAC pretty easily. For more information or a demonstration, contact the Workstation Group at X6858.

[25.2.6].....

• TOPS USERS ALERT

CENTRAM is now shipping TOPS, V2.0. Upgrades will be sent to registered owners. Note: all TOPS users on a network must run V2.0.

For more info, contact the Workstation Group (x6858).

[25.2.7].....

● MICROSOFT QUICK C NOW AVAILABLE

The next battle in the software war between Borland International (Turbo Pascal, Turbo C, Turbo Basic, etc.) and Microsoft is underway with the recent release of Microsoft's Quick C compiler. Quick C is a direct competitor to Turbo C in the low cost C compiler marketplace. A comparison of features between Turbo C and Quick C seems to give the advantage to Quick C for providing EGA and mouse support, for debugging and for providing conditional compilation. Quick C also uses Microsoft's full C's very good Run-Time Library.

Turbo C optimizes for size and Quick C optimizes for speed. Both are limited to 64K code modules but may have much larger total program sizes and data areas.

For more information, contact Workstation Group member Dan Van Zile (x5589). To check out either compiler for evaluation, contact the Workstation Group (x6858). Copies of recent evaluations are also available. The cost of Quick C is a most reasonable \$39.60, charged to your LBL account.

[25.2.8].....

● IBM PS/2 PROBLEMS AND FIXES

We've seen some different problems identified with early production models of IBM's new PS/2 machines (remember the AT's hard disk problems early on!). Four of the problems may affect LBL-owned machines. These are:

- o Model 30s with the optional 8087 co-processor - all-black chips - may have a "tendency to fail" and should be replaced.
- o Models 50, 60 and 80 floppy disk drives: If the lower left rear corner of the drive is labeled DO1, DO2, DO3, DO4 or DO5 AND the bar code label begins with "B1BAO", the drive should be replaced.
- o Model 60 with serial numbers between 8000500 and 8009000 should have their speaker/battery assembly units and system boards replaced.
- o Model 50 and 60 fixed disk adapter cards - Model 50-021 with serial numbers between 8001514 and 8023318 and model 60-041 with serial numbers between 8001342 and 8009651 may need their fixed disk adapter cards replaced.

If your new IBM PS/2 is one of these affected units and you need help with identification and/or correction, contact the Workstation Group (x6858).

[25.2.9].....

● IBM PC SOFTWARE GOODIES

(A) MICROSOFT EXCEL FOR THE PC

Excel, the darling of the Macintosh, has a new PC

incarnation. PC Magazine, December 22, 1987, reviews the product so I'll just say here that Excel on the PC is every bit as lovely as the MAC version. Maybe more lovely. It's in color. And it allows linked worksheets and charts, has intelligent recalculation, a slew of functions (131), macro-recorder, and on and on. It supports transfer of files to and from Lotus & dBase and to and from Excel on the MAC. (These transfers are not flawless, however. What transfers are?) The very best news is that MAC Excel users already know PC Excel. The two are not identical, but nearly so, and with a mouse on the PC the interface is almost a dead ringer.

Before I get too carried away, however, let me warn that when we're talking about Excel for the PC we're talking about configuration with a big "C": at minimum an AT or 386 machine, 640 K RAM, hard disk, and DOS 3.0 or later. Most definitely recommended are expanded memory, EGA, and a mouse. It comes with a run-time version of Microsoft Windows.

List price is \$495.

The Workstation has a copy for evaluation, or see me (Claudia Madison, Bldg. 50B, Rm. 2239A - x6858) for a demo of an already-configured system. The documentation weighs 9 pounds.

(B) LOTUS DEVELOPMENTS

Lotus has not been idle the last few years, adding graphics packages compatible with and add-ins attached to good old 1-2-3. Lotus has announced--but is not yet selling--an all-new version of 1-2-3 to run under OS/2 with the Presentation Manager. For those of us who won't be going to OS/2 any time soon, though, the current selection of add-ins and work-withs makes for a lot of functionality.

(C) SPEED-UP and LEARN:

Free add-ins from Lotus are available from the Workstation Group to LBL Lotus users.

- Speed-up. does intelligent re-calc.
- Learn is a macro recorder.

My test of Speed-up on a 386 resulted in no appreciable performance improvement, but the test was not very strenuous and the machine is lightning fast to begin with. Learn could be useful to those of us who find daunting the collection of slashes and braces that is 1-2-3 macro syntax. Don't be put off by the ridiculously-detailed instructions Lotus distributes for installing these two add-ins.

(D) FREELANCE PLUS and GRAPHWRITER II:

These are Graphics programs in their own right, not add-ins, which share the familiar 1-2-3 interface.

- Graphwriter II extends the repertoire of chart

formats, links charts to 1-2-3 worksheets, has a batch facility for outputting a series of charts, and allows more customizing than the 1-2-3 charting facility provides.

- **Freelance Plus** is a drawing tool (freehand, shapes, and so forth). Its nifty feature: you can import a 1-2-3 chart for graphics editing.

The list price for Freelance Plus is \$495; Graphwriter II costs about \$395. Both take lots of disk space. The Workstation Group has evaluation copies.

(E) INWORD, a non-Lotus add-in for 1-2-3:

From Funk Software, this is a memory-resident word processor to pop up from 1-2-3. It's not a full-featured word processor, to be sure, but **InWord** (or one of the other programs of its ilk) may be useful for its capacity to link a document to a worksheet (or to more than one worksheets). Workers who output standard documents, based on—for example—monthly figures from 1-2-3 worksheets, would not have to transfer data from worksheet to document every month. Another potentially useful feature: merge-print of data from worksheets. Cost: \$99.95. The Workstation Group has an evaluation copy.

See PC Magazine, January 26, 1988, for a look at lots of Lotus add-ins, including **InWord**.

A warning about add-ins: They take up program space in memory. Depending on what other programs are resident, a few add-ins might run a machine out of RAM. Having a scad of expanded memory won't help. None of the add-ins (not even those distributed by Lotus itself) support the most recent expanded memory standard which allows programs (rather than data) to occupy expanded memory. For now, programs are relegated to the standard 640K.

(F) HOW ABOUT A 3-D SPREADSHEET ?

Actually, some people don't consider **Javelin Plus** a spreadsheet at all. It is a modeling program, but it does not use row and column labels; radical idea-- it assigns each piece of data a meaningful name. Its date handling is sophisticated in the extreme—it understands quarters, for example. Major attractions: linked worksheets and support for multiple views—notes, diagram, formula. It was reviewed in PC Magazine, October 27, 1987. Cost: \$249 for the standalone version. The Workstation Group has a demo.

(G) GENIFER -- for dBase developers

Genifer is an application generator for dBase. It goes well beyond the Appgen utility bundled with dBaseIII+ but outputs essentially the same kind of product: code for a menu-driven application to maintain a data base and print some limited number of pre-designed reports. Screen and report design is

accomplished by plunking words and lines on a screen using any text editor, a somewhat less sophisticated method than that used by dBASEIII+. Where **Genifer** might shine for some applications developers is in the facility with which multiple files can be linked. Mercy! Fields from multiple files can be displayed on a single screen, a programming task which in dBase is tedious to the max. Cost is \$249. The Workstation Group has a demo disk.

(H) FINALLY (does the woman never stop?) . . .

The Workstation Group has a copy of the latest "IBM PC & COMPATIBLES Technical Word Processor Review Summary", a scintillating read detailing the features of twenty products for doing technical word processing on PC's. Aside from product specifics, the document is a good description of the issues involved in technical typing. Also available for \$2.57 plus tax, at Kinko's on southside, UCB Computer Center Document MIC 3.1.3.

[25.2.10].....

• MAC II SECURITY

At last, we have received our first shipment of **Vaultec Keypers** for the **MAC II**.

The **Keyper** is a wrap-around device similar to the type we have been using on IBM PCs and ATs for several years. It is far stronger than cable devices and also prevents the **MAC II** case from being opened without a key. Since a major portion of the cost and value is inside the **MAC II** case in the form of hard disks, extra memory and video adapters, the best security devices should prevent the case from being easily opened.

Cost is \$244. Contact the Workstation Group (x6858) to arrange delivery.

[25.2.11].....

• CRICKET GRAPH FAST FORMAT FILE

Problem: A program on the VAX generates lots of data points and you want to plot it with **Cricket Graph** on a **MAC**.

Solution: Write a VAX fortran utility that reads your ASCII data and puts it in a **Cricket Graph "Fast Format"** file. Use **Kermit** (binary) to transfer the file to the **MAC**; read the file into **Cricket Graph** and plot.

The object of preprocessing your data into **Cricket Graph fast format file** rather than regular ASCII file format is speed. With 2400 data points, fast format file loads in 30 seconds, otherwise in 7 minutes & 55 seconds.

For additional information, contact **Mehry Yazdanian**, Applied Science Department, Building Science Division (x4701).

[25.2.12].....

•WORKSTATION SOFTWARE LENDING LIBRARY

The Macintosh and IBM PC software listed below can be borrowed for one week for evaluation but is not to be copied!! Call Bruce Burkhart (x6858) to reserve a software package. The WorkStation Group allows you to keep these packages for one week at no charge. If not returned after the 8th day, there will be a \$100 charge plus the software cost recharged to your account.

	Apple Macintosh	IBM PC-XT-AT
Communications	Kermit v0.8 Red Ryder v9.4 ** TOPS for the MAC * VersaTerm v3.10	DECnet DOS v1.1 Kermit v2.29 PC-VT v8.4 ** TOPS for the PC
Compilers	* Aztec C Compiler v3.40B Lightspeed C v2.01 Turbo Pascal v1.0 by Borland	* MS Fortran v4.0 * MS C Compiler v5.0 MS Quick Basic v3.0 Q-DOSII RM Fortran v2.0 Turbo Pascal v3.0 Borland
CAD/CAM	* MiniCad v3.15	
Database	4th Dimension v1.0 FileMaker Plus v1.0	dBaseIII PLUS
Graphics and Design	* Cricket Draw v1.1 * Cricket Graph v1.0 * Fontographer v2.3.2 FullPaint Illustrator v1.0 * MacDraft v1.2b 9/26/87 MacDraw v1.9.5 * MacEqn v2.1 MacPaint v1.0 PowerPoint v1.0 SuperPaint v1.0	HP Charting/Drawing Gallery v1.0 MS Mouse PS/2 MS Paintbrush MS Show Partner Pizazz v1.0 Pizazz Utility Disk v1.01 * Lotus Freelance * Lotus GraphWriter II v1.0
Instructional Utilities	Personal Training Systems: Audio Cassette & Disk "Learn Excel v1.04" (9 courses) "Learn HyperCard v1.0" (3 cou.) "Learn Pagemaker v2.0"(3 cou.) "Learn Word v3.0" (3 courses)	ATI Teach Yourself: Lotus 1-2-3 Release 2 Cdex Training Program: Lotus 1-2-3 v1a PC Tutor
Miscellaneous/ Utilities	* HFS Backup v2.02 Printworks for the MAC * QuickKeys v1.0 SmartScrap & The Clipper Thesaurus for WORD 3.0 * Tempo v1.2	Carousel v1.0 Double DOS JetSet (Lotus/HP Laser Jet) * MS Windows v2.0 * MS Windows/386 Norton Utilities v4.0 * Polaris Forms v1.0 SideView v1.0 Software Bridge v1.0
Organizational Tools	More!	TimeLine v1.0
Page Processor/ Layout	* PageMaker v2.0A PageMaker Templates v2.0 * Quark XPress v1.1 * Ready-Set-Go! 4	* PageMaker v1.0a Xerox Ventura Publisher v1.1
Spreadsheet	Excel v1.04 101 Macro's for Excel	* Excel v2.0 Lotus 1-2-3 v2.01 * InWord v1.0 Lotus HAL & Lotus Metro * "Learn and Speed Up" Program
Word Processor/ Editors	* MacWrite v4.6 MindWrite v1.12 QUED/M Textures v1.0 WriteNow v1.0 Word v3.01	DisplayWrite4 v1.0 PC/VI v1.11 Lotus Manuscript v1.0 Volkswriter 3 * WordPerfect v4.2 w/speed up * Word v4.0
Demo Programs	dBase Mac; VersaCad (Mac SE) Parameter Manager Plus MathType; FullWrite Professional	Lotus Agenda Javelin PLUS GENIFER: The Smart Software System

* Update or New Listing. ** WKSG Lab Demo Only.

[25.2.13].....

● WHERE MICROSOFT HAS DARED NOT TREAD

LBL's own Steve Derenzo has written a bare-bones, no-nonsense program that automatically numbers references, equations, and figures and inserts reference citations from a master file—all of this accomplished on Macintosh WORD 3.01 files.

Steve's program, WORD3AID, is written in Lightspeed C. It works as a post-processor, which means that after a WORD document is created, with mark-up code typed in to indicate where references, etc., are to appear, the WORD document is saved using the RTF format option. The WORD3AID program can then be run to create a new output document with numbers, citations, and so forth inserted.

There is a minimal user interface to this program. The WORD document has to have a specific name, IN.RTF, and the WORD3AID program returns a file named OUT.RTF. Steve has documented all of this very well. Should others wish to enhance the program with a fancier interface, the code is available.

Bring a formatted disk to the Workstation Group for a copy of the WORD3AID program, the documentation, and the code.

THE QUESTION IS...

Why does a user of this Rolls-Royce of WYSIWYG programs have to insert mark-up code and then run a document through a post-processing mill in order to do simple sequential numbering? Microsoft, please!

And, while we're at it—more questions for that friendly software giant in Redmond (Ho. Ho.)

- Why can't we insert the file name into the header/footer in Word the way we can in Excel?
- And when, oh when, will there be some function key support for the extended keyboard?

[25.2.14].....

● AVOIDING MULTIPLE SYSTEM FOLDER COPIES

... from Workstation Group Member Carole Casaretto

If you are using a Macintosh with a Hard Disk Drive, it is important to only have one copy of the System File on your MAC. The System File should be placed **only** in the System Folder.

The Macintosh System should only be updated when a newer version, such as the Macintosh System Software Update Version 5.0 is being installed in the System Folder.

Collecting multiple versions is easy because most application packages come with a copy of the Macintosh System File. To avoid this, do not copy the System File icon when installing the new software package. If you install a new application by dragging the

floppy disk icon onto the desktop, a new folder is created and copies of all programs including the system file are copied into the folder. You should immediately open the new folder and put the system file into the trash.¹

An alternate approach: create a new folder, open the floppy disk, and select all but the system to be copied onto the new folder.

- To find multiple copies on your hard disk, pull down the apple menu and choose Find File.
- To search for a file, type its name, (in this case "System"), then click the Go button or press return.
- To see information about a file that has been found, select the file by clicking on its name in the list. Note the location of each System File that is not in the System Folder.
- Close the Find File Dialog Box.
- Locate and select each System File not in the system folder and put in the trash.

[25.2.15].....

● MICROSOFT SOFTWARE

The Workstation Group has a limited supply of Apple and Microsoft software products available to the LBL staff on a recharge basis. MAC products currently on hand include MS Word v3.01 and Excel v1.04. Apple products include Multifinder v5 and Hypercard. Users are reminded that other Microsoft products (for both MAC and PC-DOS) may be ordered through WKSG at substantial price reductions.

[25.2.16].....

● FELIX

Can you imagine a MAC input device other than a Mouse or Trackball? Well, Lightgate Technologies has come up with Felix (meow!). Felix combines optical tablet and mouse technology to produce a device with full-screen cursor control within an active motion area of one square inch. It's like holding a pen or pencil in your finger tips. Move it fast and the cursor moves fast, move it slow for precision and accuracy. Really different. Suggested retail price, about \$149. Contact Bruce Burkhardt at the Workstation for additional information (x6858).

¹ Beware, though. Some Desk Accessories and fonts are distributed as part of the system file. Use Font-DA Mover to transfer them from the distribution disk to your hard disk system file.

[25.2.17].....

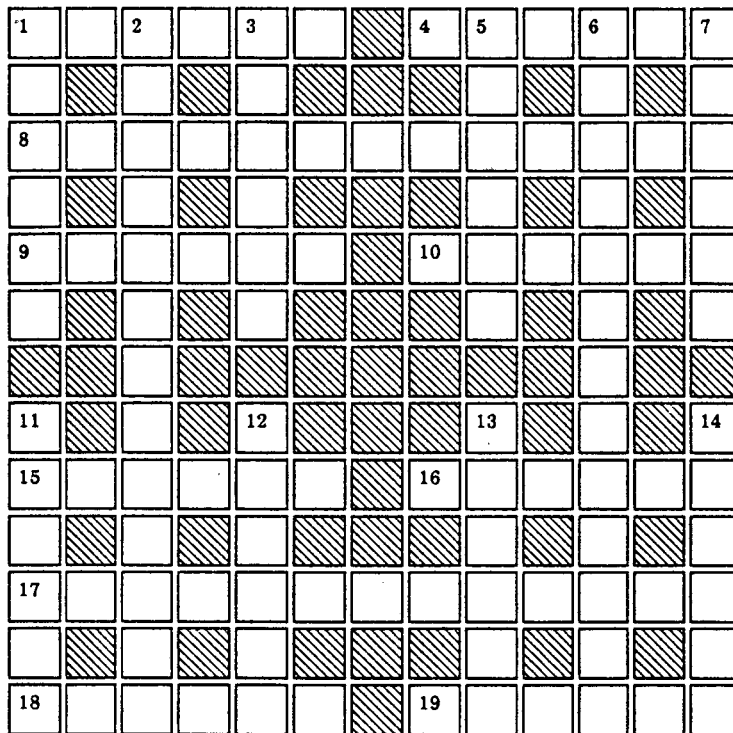
● HYPERCARD STACKS

HyperCard as a Desk Accessory? Symmetry Corporation is now shipping HyperDA, retailing at \$69. This Desk Accessory is a browse-only tool, meaning there are some limitations on the full power of HyperCard. However, many of the normal features will be accessible while running another application.

Really into HyperCard? The WKSG Lab has lots of the Berkeley Macintosh User's Group (BMUG) HyperCard stacks. These stacks contain a wide variety of utility and other subjects. Drop by the Lab and browse through our catalog; bring blank floppies for copies.

If you want to know more about HyperCard, the WKSG Lending Library has a brand new self-training set of audio/disk programs for it. The four sets are: *Using HyperCard*, *Creating Cards & Stacks*, *Basic Scripting*, and *Advanced Scripting*.

If you don't have a copy of HyperCard yet, WKSG has a limited supply available for LBL staffers. Contact Bruce Burkhardt of the Workstation Group (x6858).



#8701 -- Word-Ladder

D. F. Stevens

(After Ximenes and Afrit)

Words corresponding to numbers 1-31 form a ladder: Each rung has exactly five of its six letters in common with the next rung, e.g., MISTER, HERMIT, WRITHE. Only odd-numbered rungs are to be entered into the diagram; they have no clues and are to be deduced from the ladder and cross letters. Clues are provided for even-numbered rungs, which do not appear in the diagram, and for the four words of the diagram that do not participate in the ladder. The solutions to the non-ladder words will provide one letter towards each diagram rung. A cross-reference key from the diagram to the ladder is provided. One diagram rung is a geographical proper name.

The Ladder

- 1. 15 across 2. Note: Recycle trash in burrows. 3. 14 down
- 4. British surgeon is one to catalogue the plow. 5. 3 down 6. After bed, the French snuggle.
- 7. 7 down 8. Expressions of contempt never seen on board ship. 9. 13 down
- 10. Grooms present detailed mixture 11. 10 across 12. This slope is pure torture. 13. 16 across
- 14. Pincers left in the pillars. 15. 1 across 16. Overblown and profane in rank. 17. 9 across
- 18. Cater to GI cop in cutback 19. 11 down 20. Animal craft found among men. 21. 4 across
- 22. Wandering back, about to speak wildly. 23. 1 down 24. Miller's right away from center.
- 25. 18 across 26. Sallied forth without me, as arranged. 27. 5 down
- 28. Note: The Russian has come back to join. 29. 19 across 30. Solver confuses amatory pair. 31. 12 down

Non-Ladder Words

- 2. Pious caprices constructed of acute mental vision. (13)
- 6. Shakes derange mussel tonsure. (13)
- 8. Duty intervenes between a strayed priest and one of the dance. (13)
- 17. Proclamation for solidifying sentence structure? (13)

A little exercise for the puzzle addicts in our readership. Executed on a XEROX Star.

Cross-Reference Key from Diagram to Ladder

Across: 1 = 15	15 = 1	Down: 1 = 23	11 = 19
4 = 21	16 = 13	3 = 5	12 = 31
9 = 17	18 = 25	5 = 27	13 = 9
10 = 11	19 = 29	7 = 7	14 = 3

YES I would like to receive the Computing Newsletter

NAME

FIRM.....

CITY

STATE

ZIP

PHONE

COMMENTS.....

.....

.....

.....

Return to:.....Newsletter - MS 50F
Lawrence Berkeley Laboratory - University of California
Berkeley, CA 94720
Attention: NL MAILING LIST

PUB-429 2-88/1600

Newsletter Closing Date is Tuesday, February 16, 1988 . . . and no later.

Address all communications for the Newsletter to login news on UX1.

Prepared for the U.S. Department of Energy under Contract DE-AC03-76SF00098

Lawrence Berkeley Laboratory is an Equal Opportunity Employer

Lawrence Berkeley Laboratory is located in the hills above the UC Berkeley Campus. The (chocolate-colored) Building 50 Complex is located across from the red-and-white shuttle bus stop. You can get a free ride to the Laboratory on the shuttle bus. Pickup point is at Shattuck and Center in downtown Berkeley.

SIGN UP FOR THE NEWSLETTER

Attention LBL employees: If you use the Computer Center's UNIX or VMS system, or if you are a owner or user of a PC or a MAC, you should sign up to receive the Laboratory's Computing Newsletter. It contains useful information about our systems and has a helpful **Workstation News** section (supported by the Information and Computing Sciences Division's Workstation Group), offering support and helpful hints for PC users. This is also a place for you to send questions and comments. To add your name to the Newsletter Mailing List, contact Maggie Morley, x5529, or

VMS Mail: lbl::MAMorley

UNIX or
Software Tools Mail: MAMorley@lbl.gov

Lawrence Berkeley Laboratory
Computer Center Library
MS 50F
University of California
Berkeley CA 94720