

UC Berkeley

UC Berkeley Previously Published Works

Title

Sorghum biomass production in the continental United States and its potential impacts on soil organic carbon and nitrous oxide emissions

Permalink

<https://escholarship.org/uc/item/0pm229f4>

Journal

GCB Bioenergy, 12(10)

ISSN

1757-1693

Authors

Gautam, Sagar
Mishra, Umakant
Scown, Corinne D
et al.

Publication Date



2020-10-01

DOI

10.1111/gcbb.12736

Peer reviewed

Sorghum biomass production in the continental United States and its potential impacts on soil organic carbon and nitrous oxide emissions

Sagar Gautam^{1,2}  | Umakant Mishra^{1,2} | Corinne D. Scown^{2,3,4}  | Yao Zhang⁵

¹Environmental Science Division, Argonne National Laboratory, Lemont, IL, USA

²Joint BioEnergy Institute, Lawrence Berkeley National Laboratory, Emeryville, CA, USA

³Energy Analysis & Environmental Impact Division, Lawrence Berkeley National Laboratory, Berkeley, CA, USA

⁴Biological Systems and Engineering Division, Lawrence Berkeley National Laboratory, Berkeley, CA, USA

⁵Natural Resource Ecology Laboratory, Colorado State University, Fort Collins, CO, USA

Correspondence

Sagar Gautam, Environmental Science Division, Argonne National Laboratory, Lemont, IL 60439, USA.
Email: sgautam@anl.gov

Funding information

US Department of Energy, Grant/Award Number: DE-AC02-05CH11231

Abstract

National scale projections of bioenergy crop yields and their environmental impacts are essential to identify appropriate locations to place bioenergy crops and ensure sustainable land use strategies. In this study, we used the process-based Daily Century (DAYCENT) model with site-specific environmental data to simulate sorghum (*Sorghum bicolor* L. Moench) biomass yield, soil organic carbon (SOC) change, and nitrous oxide emissions across cultivated lands in the continental United States. The simulated rainfed dry biomass productivity ranged from 0.8 to 19.2 Mg ha⁻¹ year⁻¹, with a spatiotemporal average of 9.7^{+2.1}_{-2.4} Mg ha⁻¹ year⁻¹, and a coefficient of variation of 35%. The average SOC sequestration and direct nitrous oxide emission rates were simulated as 0.79^{+0.38}_{-0.45} Mg CO₂e ha⁻¹ year⁻¹ and 0.38^{+0.04}_{-0.06} Mg CO₂e ha⁻¹ year⁻¹, respectively. Compared to field-observed biomass yield data at multiple locations, model predictions of biomass productivity showed a root mean square error (RMSE) of 5.6 Mg ha⁻¹ year⁻¹. In comparison to the multi State ($n = 21$) NASS database, our results showed RMSE of 5.5 Mg ha⁻¹ year⁻¹. Model projections of baseline SOC showed RMSE of 1.9 kg/m² in comparison to a recently available continental SOC stock dataset. The model-predicted N₂O emissions are close to 1.25% of N input. Our results suggest 10.2 million ha of cultivated lands in the Southern and Lower Midwestern United States will produce >10 Mg ha⁻¹ year⁻¹ with net carbon sequestration under rainfed conditions. Cultivated lands in Upper Midwestern states including Iowa, Minnesota, Montana, Michigan, and North Dakota showed lower sorghum biomass productivity (average: 6.9 Mg ha⁻¹ year⁻¹) with net sequestration (average: 0.13 Mg CO₂e ha⁻¹ year⁻¹). Our national-scale spatially explicit results are critical inputs for robust life cycle assessment of bioenergy production systems and land use-based climate change mitigation strategies.

KEYWORDS

biomass, DAYCENT, emissions, sequestration, soil organic carbon, sorghum

The submitted manuscript has been created by UChicago Argonne, LLC, Operator of Argonne National Laboratory ("Argonne"). Argonne, a U.S. Department of Energy Office of Science laboratory, is operated under Contract No. DE-AC02-06CH11357. The U.S. Government retains for itself, and others acting on its behalf, a paid-up nonexclusive, irrevocable worldwide license in said article to reproduce, prepare derivative works, distribute copies to the public, and perform publicly and display publicly, by or on behalf of the Government. The Department of Energy will provide public access to these results of federally sponsored research in accordance with the DOE Public Access Plan. <http://energy.gov/downloads/doe-public-access-plan>

This is an open access article under the terms of the Creative Commons Attribution License, which permits use, distribution and reproduction in any medium, provided the original work is properly cited.

© 2020 The Authors. *GCB Bioenergy* Published by John Wiley & Sons Ltd

1 | INTRODUCTION

Bioenergy crops can help mitigate anthropogenic greenhouse gas (GHG) emissions as the carbon emitted during combustion of biofuels is balanced by the uptake from atmosphere through photosynthesis (Hughes, Lloyd, Huntingford, Finch, & Harding, 2010; Mishra, Torn, & Fingerman, 2013). Prior studies have estimated that biomass can be used to meet 15%–20% of the global predicted energy demand by 2050 (Beringer, Lucht, & Schaphoff, 2011), and about 25% by 2100 (Dale et al., 2014). The US Energy Independence and Security Act (EISA) of 2007 mandates an increase in the production of clean renewable fuels through the Renewable Fuel Standard, which requires 36 billion gallons of biofuels to be used in transportation fuel per year by 2022. Meeting the EISA goals requires substantial changes in land use patterns across the United States, which can impact the energy balance and biogeochemical cycles. Quantifying changes in soil organic carbon (SOC) and GHG emissions due to adoption of bioenergy crops at large spatial scales remain as grand challenges in conducting robust life cycle assessment of biofuels (McKone et al., 2011). National scale simulation of the bioenergy landscape using agroecosystem models capable of incorporating management practice and environmental effect can help (a) identify suitable locations to cultivate bioenergy crops; (v) assess soil- and site-specific environmental impacts of cultivating bioenergy crops at large spatial scales; and (c) reduce modeling uncertainties in downstream analysis such as life cycle assessments of biofuels and bioproducts.

Bioenergy sorghum [*Sorghum bicolor* (L.) Moench] is a promising bioenergy crop because it is a drought-tolerant and high-yielding forage sorghum (Liu, Ren, Spiertz, Zhu, & Xie, 2015). Bioenergy sorghum maintains high biomass productivity under a wide range of environmental conditions and low inputs (Cui, Kavvada, Huntington, & Scown, 2018; Rooney, Blumenthal, Bean, & Mullet, 2007). Bioenergy sorghum can also be grown on marginal lands under constraints such as soil water deficits, soil salinity, and alkalinity without competing with food production (Dalla Marta et al., 2014; Regassa & Wortmann, 2014). High biological productivity, lower input requirements, and a wider range of adaptability to environmental conditions make sorghum an attractive feedstock option compared to other candidate annual bioenergy crops (Yu, XuZhang, & Tan, 2008).

Despite substantial research investments in developing sorghum as a bioenergy feedstock (e.g., the US Department of Energy ARPA-E TERRA program), little is known about the regional scale impact of sorghum cultivation on SOC change and nitrous oxide (N₂O) emissions. Field studies focused on identifying the optimal nitrogen application and

crop residue removal rates to optimize the biomass yield and minimize soil GHG emissions. Storlien, Hons, Wight, and Heilman (2014) reported that nitrogen addition significantly increased N₂O emissions, and incorporation of 50% sorghum crop residues to soil increased cumulative CO₂ emissions. The studies that focused on simulating sorghum biomass production using process models are limited to the field scale (Dou, Wight, Wilson, Storlien, & Hons, 2014; Wang et al., 2017), or used a coarse-scale land surface model that lacks a robust representation of the bioenergy crop and crop management conditions (Lee et al., 2018). More recently, a data-driven machine learning approach has been applied to predict the sorghum biomass productivity (Huntington, Cui, Mishra, & Scown, 2020). In this study, we quantify potential changes in SOC and N₂O emissions due to cultivation of biomass sorghum across cultivated lands of continental United States using a process-based model. Our findings may help to identify suitable lands across continental United States to place bioenergy sorghum where economic biomass yield can be harvested with lower environmental impacts. Our results can also be used as input to life cycle assessments for biofuels to understand the net climate impacts of bioenergy production systems (McKone et al., 2011; Scown et al., 2012).

A wide range of process-based models are used to predict biogeochemical processes as a function of land management, soil properties, and climatic conditions to understand the SOC dynamics and GHG emissions from agricultural systems (Brilli et al., 2017; Coleman et al., 1997; Farina et al., 2011; Giltrap, Li, & Saggar, 2010). We used the Daily Century (DAYCENT) agroecosystem model (Del Grosso et al., 2001), which allows for a robust representation of diverse agricultural management practices while projecting biogeochemical changes both spatially and temporally. DAYCENT has been widely implemented to simulate the biomass yield, SOC changes, and GHG emissions from agricultural systems (Del Grosso et al., 2002, 2006, 2008). However, most of the DAYCENT model applications are limited to field scales due to the extensive data and computational power needed to run the model at large spatial scales. We applied the DAYCENT model over the continental United States at a 4 km grid resolution to understand the environmental impacts of cultivating bioenergy sorghum in the croplands and pasture and grass lands over the continental United States. The major objective of this study is to identify optimal locations in continental United States to cultivate sorghum with higher biomass yield and lower environmental impacts. The specific objectives of this study were to (a) predict the rainfed biomass productivity of sorghum on US cultivated lands; (b) quantify the potential changes in direct N₂O emissions and SOC stocks due to sorghum adoption; and (c) identify the cultivated lands where sorghum adoption will provide economic

biomass yields and net carbon sequestration under rainfed conditions.

2 | MATERIALS AND METHODS

2.1 | DAYCENT model description

DAYCENT is a daily time step process-based agroecosystem model designed to simulate the biogeochemical cycles at a point scale (Del Grosso et al., 2001). DAYCENT is the extended daily version of the CENTURY model (Parton, Hartman, Ojima, & Schimel, 1998). It has the capability to simulate exchange of carbon and soil nutrients (nitrogen, phosphorus, and sulfur) between the atmosphere and terrestrial ecosystem, and other processes including soil water and soil temperature dynamics (Schimel et al., 2001). DAYCENT has been widely used to predict SOC change, GHG emissions, and plant productivity. Model inputs include climatic inputs; daily temperature and precipitation datasets, soil factors; texture, pH, hydraulic properties, and agricultural management; historic details on land use; and fertilizer, tillage, and other management activities. The DAYCENT model simulates decomposition and nutrient mineralization of plant litter and soil organic matter. The crop submodule in DAYCENT simulates plant growth and phenology, net primary productivity and its allocation to different compartments (grain, root, and shoots), and the C:N ratio of these plant compartments. The growing degree-day approach is used for management scheduling. This approach enables scheduling agricultural management as a function of surface air temperature, known as the heat unit approach. The heat unit for the plant is determined in the model based on long-term climate data and the crop-specific base temperature.

2.2 | Study area, weather, and soil input

We included three land cover types (croplands, pastures, and grasslands; hereafter “cultivated” lands) based on the National Land Cover Database (Yang et al., 2018) that could be converted to bioenergy crop production in the continental United States. The model simulation was conducted at a 4 km grid scale and limited to areas where the land cover type in each grid is more than 50% cropland, grassland, and/or pasture (Figure S1). The 30 year (1989–2018) daily precipitation and minimum and maximum air temperature data were extracted from the Global Historical Climatology Network (GHCN) datasets of National Centers for Environment Information and used for weather input to the model (Menne, Durre, Vose, Gleason, & Houston, 2012). There are over 4,161 weather stations with 30 year datasets

across the continental United States. The average annual daily temperature and average annual precipitation during 1989–2018 are presented in Figure S2. The weather generator-simulated weather data based on 30 year historic data were used for the long-term historic simulation of the native vegetation. For assigning the weather station data to each grid, the nearest weather station based on haversine distance from the centroid of the grid was used. The major soil parameters for the model include the multilayer soil texture, bulk density, soil moisture characteristics curve data, hydraulic conductivity, soil organic matter, and soil pH. The Soil Survey Geographic (SSURGO) database was used to build the model input database, and calculations were made for the soil water characteristics curve data (wilting point and field capacity) using the pedotransfer function (Saxton & Rawls, 2006; Soil Survey Staff, 2015). A summary of the data types and the sources used in this study is presented in Table S1.

2.3 | Regional simulation, land use, and DAYCENT model setup

The study area was divided into 4 km grid cells, and the simulations were conducted at the centroid of the grid cell. The DAYCENT model is designed to explicitly run at a point scale with no horizontal connections among the cells. Considering the number of available GHCN weather stations and computational efficiency for processing the daily timescale regional input/output of the model, this study was conducted at a 4 km grid, which is common across the environmental modeling community for regional scale applications (Daly et al., 2000; Oubeidillah, Kao, Ashfaq, Naz, & Tootle, 2014). The DAYCENT model was run for 4,000 years to achieve the steady-state values for soil carbon and nitrogen pools to reflect the natural conditions of land prior to start of agriculture (Basso et al., 2011). Region-specific grass types were used for the equilibrium run based on the data used in the US Environmental Protection Agency Inventory of US GHG emissions and sinks (USEPA, 2015). Land use and management history for the past and present were compiled from different data sources. Historical management from initial tillage to the modern agricultural period was simulated with crop rotation and a management scheme compiled at the Major Land Resource Area level from different historical data sources (Ogle et al., 2010). Modern day agriculture management representation was based on the multiyear National Land Cover Database analysis. The historical database was used to represent the average annual nitrogen fertilizer rates for each of the agricultural crops (USEPA, 2005). Bioenergy sorghum was cultivated in 2008 to study the impact of decade-long cultivation of the bioenergy crop. The assumptions for

large-scale cultivation of sorghum included (a) use of heat unit-based agricultural management; (b) the same cultivar of sorghum across the study area; (c) rainfed conditions; (d) common fertilizer application rate of 120 kg N/ha; and (e) an aboveground biomass removal rate of 90%. Sorghum is commonly grown in Southern region of United States, as a result, agricultural management data across continental United States were not available. The fertilizer rate that we applied was based on the recommendation for economic yield of sorghum for southern region, and this rate will not limit the crop growth in other regions of United States (Contreras-Govea, Lauriault, Marsalis, Angadi, & Puppala, 2009; Cotton, Burow, Acosta-Martinez, & Moore-Kucera, 2013; Han et al., 2012). We used uniform agricultural management and model parameters across the study region to understand the variability in sorghum biomass productivity across region as a function of land use history, weather, and soil properties.

The model setup was automated using an R script (R Core Team, 2018), which enabled reading the weather data from the GHCN database and generating weather files, reading the data from the SSURGO database and generating the soil data files and updating the site-specific and crop parameters for each grid cell across the study area. The results are presented as the spatial mean with prediction range due to interannual climate variability and soil properties represented as the first and the third quartile.

2.4 | Model calibration and parameterization

Model calibration for bioenergy sorghum has been conducted in an earlier study for simulating field-scale measurement of water content, SOC, and soil temperature (Wang et al., 2017). In our study, the crop parameters were changed to represent the field-scale sorghum biomass yield for the multiple locations. Manual calibration was preferred over autocalibration, as DAYCENT parameter sensitivity and ranges were well understood based on previous studies of sorghum (Duval et al., 2013; Duval, Ghimire, Hartman, & Marsalis, 2018; Wang et al., 2017). We attempted to represent the variability in sorghum yield due to change in environmental factors (soil properties, temperature, precipitation, and solar radiation) across the study domain. The observed yield from a 5 year study (2008–2012) under multiple rainfed locations with standard agronomic practices was used for the model calibration (Gill et al., 2014). Our DAYCENT predictions were validated using sorghum yield values from the literature (Chaganti et al., 2020; Wang et al., 2017; Wight et al., 2012). The geographic distribution of the validation sites represents major rainfed sorghum growing regions in the continental United States.

Furthermore, the predicted biomass yield was compared with the time series multi State sorghum biomass yield data from the National Agricultural Statistics Services (NASS) survey dataset (NASS, 2018). Model performance was evaluated using root-mean-square error (RMSE). RMSE is a square root of the average of squared differences between the observation and model prediction values.

The baseline SOC prediction of the DAYCENT model was compared with observed SOC data points ($n = 654$) across continental United States using Rapid Carbon Assessment database (West, Wills, & Loecke, 2013). Due to a lack of experimental data on trace gas fluxes on fields growing bioenergy sorghum, we validated our N_2O emission predictions based on the biomass productivity and SOC. This approach has been well documented to provide reliable validation of gas fluxes (Adler, Grosso, & Parton, 2007; Del Grosso et al., 2002, 2006; Duval et al., 2013). After calibration, the model was updated with a calibrated set of parameters and simulation was executed in the nine-node, 324-core cluster computing system at Argonne's Laboratory Computing Resource Center in the parallel environment. Parallel execution was implemented in R (<https://www.r-project.org/>) using the parallel package. The schematic for implementation of the entire modeling steps is presented in Figure 1.

The objective function of the model parameterization was to reduce the RMSE of the sorghum dry biomass prediction across the calibration sites to find representative sets of parameter combination. A list of the model parameters with default values and selected values is provided in Table S2. The model parameters which control the crop production due to solar radiation and the water stress multipliers were the two most sensitive parameters regulating the biomass yield (Table S2). The crop-specific energy-biomass conversion factor (PRDX (1)) represents the genetic potential of the crop, PRDX (1) was adjusted to 3.0 to represent the higher yield potential of bioenergy sorghum (Table S2). The crop-specific energy-biomass conversion factor was a sensitive parameter for biomass yield prediction. Other parameters (PPDF (1) and PPDF (2)) relating to the curve defining temperature were also found to be sensitive to biomass yield. The parameter to represent the water stress coefficient on potential growth was decreased to 0.2 to fit the water stress curve for sorghum to the relationship described in the FAO Irrigation and Drainage paper no. 56 (Allen, Pereira, Raes, & Smith, 1998). Zhang, Hansen, Trout, Nielsen, and Paustian (2018) demonstrated that the crop-specific water stress coefficients in the FAO 56 method can be used for deriving the DAYCENT parameters. This parameter resulted in the yield difference between the eastern and western regions of the United States where rainfall patterns are different, regulating the biomass yield.

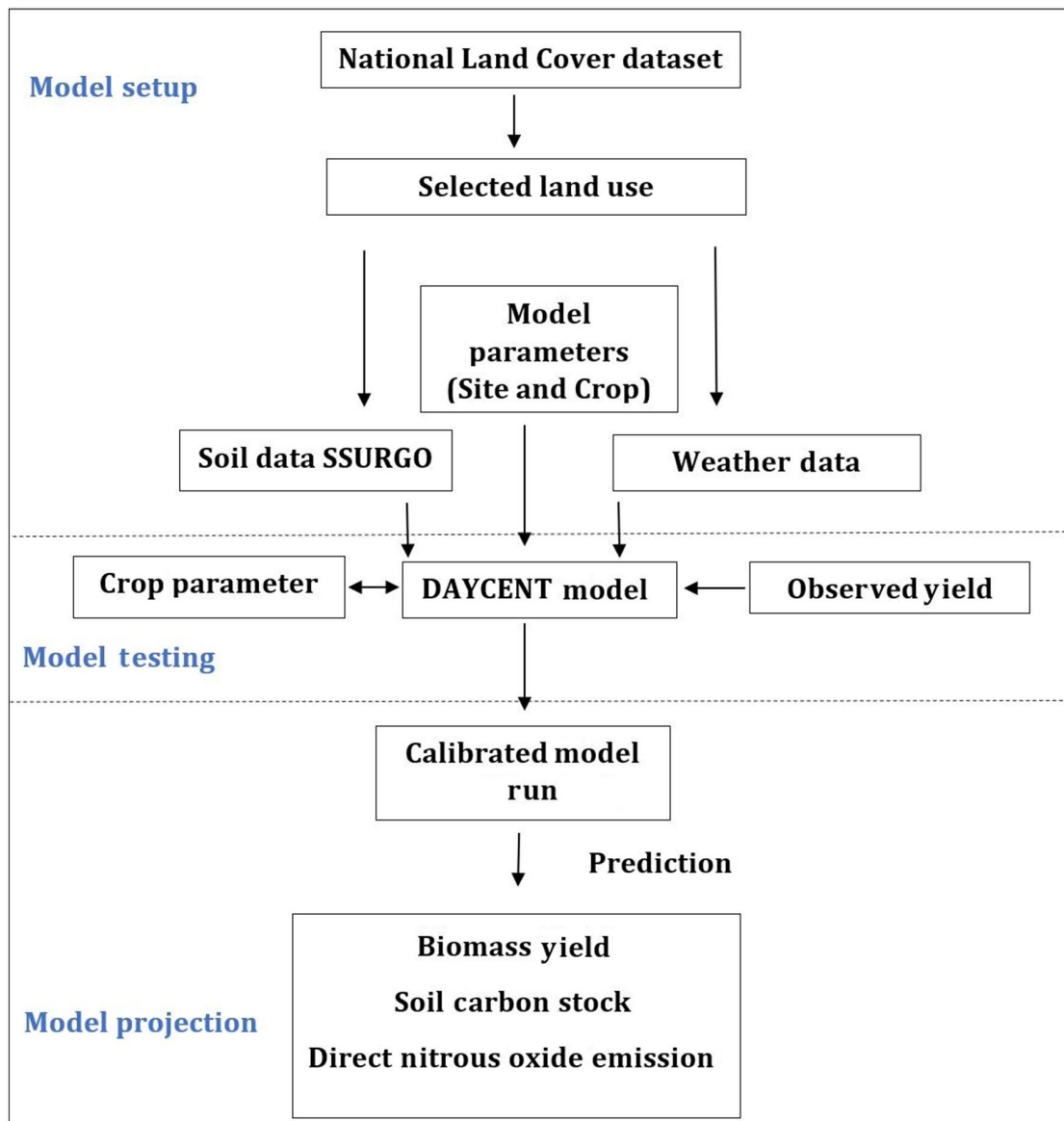


FIGURE 1 Schematic showing steps included for large-scale application of Daily Century (DAYCENT) model

3 | RESULTS

3.1 | Biomass yield prediction

The simulated rainfed dry biomass yield (hereafter referred to as biomass) values for continental United States ranged from 0.8 to 19.2 Mg ha⁻¹ year⁻¹, with a spatiotemporal average of 9.7^{+2.1}_{-2.4} Mg ha⁻¹ year⁻¹ and a coefficient of variation of 35% (Figure 2). The positive and negative values in the upper- and lowercases represent uncertainty ranges based on an interquartile range of predictions. The range of simulated yields, including first (Q1) and third quartile (Q3) of the yield map based on 10 year simulations, is presented in Figure S3. The spatial variations in the projected yields are attributed to the environmental conditions of the study area. The yield response was primarily governed by

precipitation and temperature (Figure S2). Cultivated lands in the Southern United States and Kansas have higher daily average annual temperature and precipitation, and thus are projected to have higher average sorghum biomass yield (12.5^{+2.0}_{-2.3} Mg ha⁻¹ year⁻¹). The comparison of simulated and observed biomass yield across multiple years is presented in Figure 3a. The model was able to represent year-to-year variability in yield and multiyear average yield for each of the six locations. The RMSE value for the projected biomass yield for the selected year is 5.6 Mg ha⁻¹ year⁻¹. Model predictions are close to observed yields in the validation data for the average yearly yield across all locations. In 2009, the average yearly predicted yield across all locations was 13.1 compared to observed yield of 15 Mg ha⁻¹ year⁻¹ (Figure 3a). For individual locations, the average yearly yield is well aligned to the validation data for all locations

FIGURE 2 Rainfed biomass yield of sorghum across the continental United States simulated using the Daily Century model; locations of the Regional Feedstock Partnership Partnership Trails (black triangles) used for validation

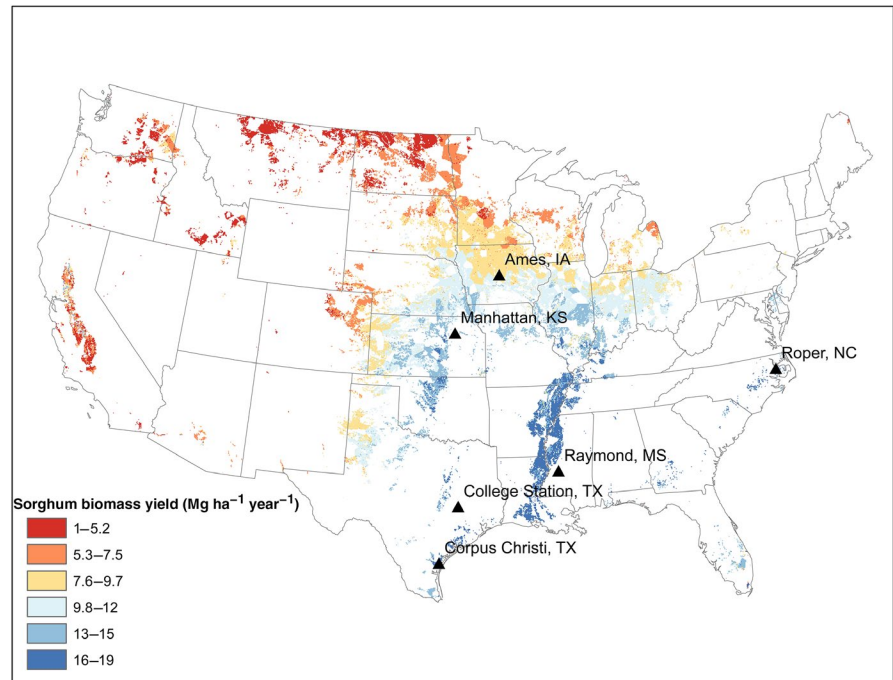
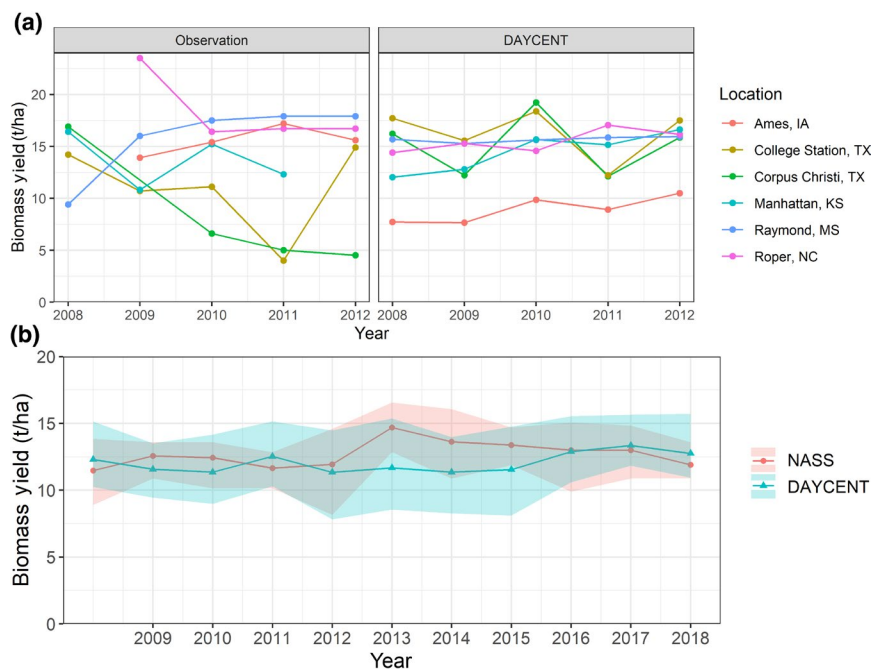


FIGURE 3 Comparison of the Daily Century (DAYCENT) model sorghum biomass yield with (a) multilocation bioenergy field trail (Gill et al., 2014) and (b) multi State ($n = 21$) National Agricultural Statistics Services (NASS) Sorghum yield datasets (NASS, 2018)



except Corpus Christi, Texas. In Corpus Christi, the model over-predicted biomass yield compared to the observed yield; however, the model was able to simulate the year with a higher biomass yield (Figure 3a). The model was unable to predict the wide range of observed variability in biomass yield for Texas. The model underpredicted the yield for Ames, IA. The model prediction closely represented the observed multiyear yield trend in biomass for all other four locations (Figure 3a). The time series comparison of DAYCENT yield with NASS dataset shows close year-to-year match in ensemble mean and range of predictions with

RMSE of $5.5 \text{ Mg ha}^{-1} \text{ year}^{-1}$ (Figure 3b). The comparison statistics of the NASS yield and DAYCENT prediction are presented in Table S3.

3.2 | Soil organic carbon change, direct nitrous oxide emissions, and hotspot analysis

The DAYCENT model was set up to simulate the SOC dynamics for the topsoil (0.2 m). The baseline SOC prediction of DAYCENT model showed r^2 of .43 and RMSE of 1.9 kg/

m^2 when compared with 654 observed point across continental United States (Figure 4).

Simulated SOC change for the continental United States ranged from -0.76 to $3.0 \text{ Mg CO}_2\text{e ha}^{-1} \text{ year}^{-1}$ with a spatial mean of $0.79^{+0.38}_{-0.45} \text{ Mg CO}_2\text{e ha}^{-1} \text{ year}^{-1}$ for decade-long sorghum cultivation (Figure 5). The spatial mean SOC

sequestration for the Southern region plus Kansas was $1.54^{+0.33}_{-0.27} \text{ Mg CO}_2\text{e ha}^{-1} \text{ year}^{-1}$. A few states in the Upper Midwest showed net soil carbon emissions resulting from long-term sorghum cultivation (Table S4). The SOC map before and after decade-long cultivation of bioenergy sorghum is presented in Figure S4. The spatiotemporal average

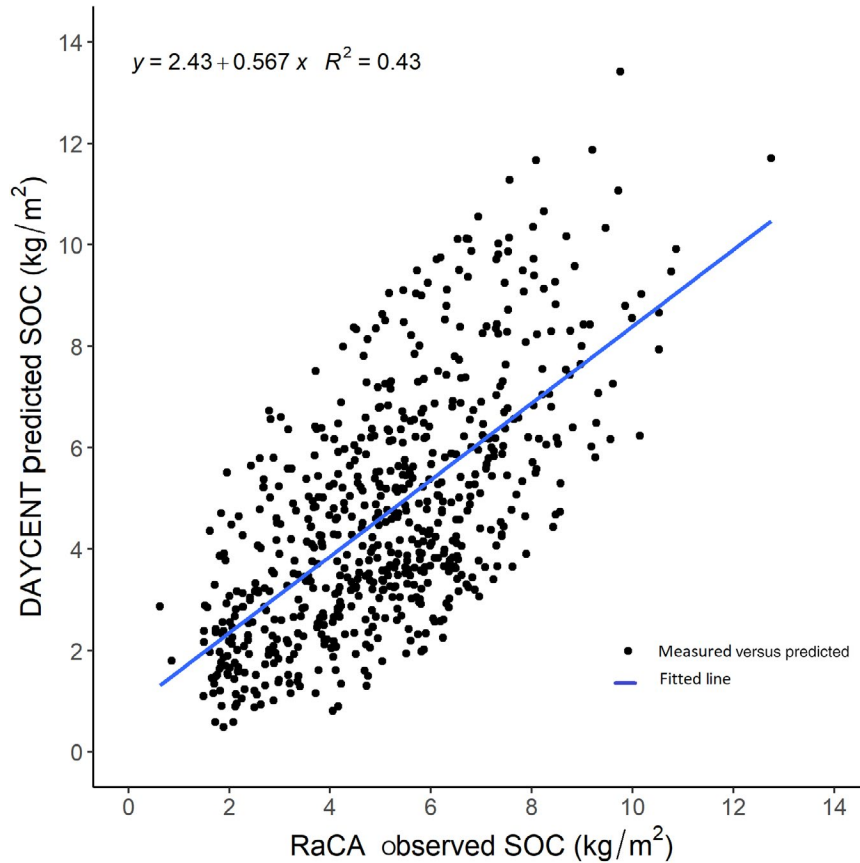


FIGURE 4 Comparison of Daily Century (DAYCENT) predicted baseline soil organic carbon (SOC) stocks with Rapid Carbon Assessment (RaCA) SOC database (West et al., 2013) across continental United States

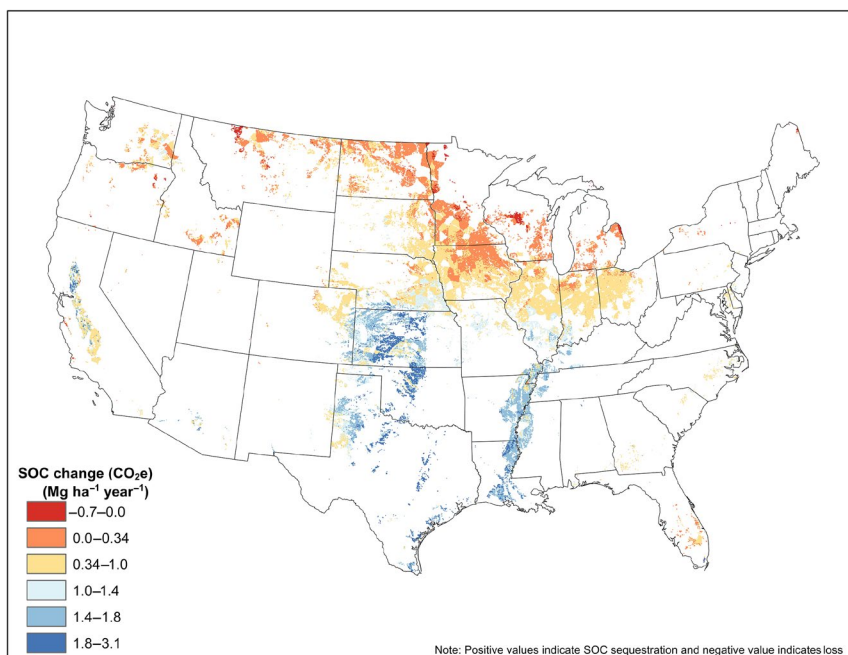


FIGURE 5 Simulated mean soil organic carbon stock change for topsoil (0.2 m) due to decade-long (2009–2018) sorghum cultivation across the continental United States

direct N_2O emission due to sorghum cultivation was simulated as $0.38^{+0.04}_{-0.06}$ $\text{Mg CO}_2\text{e ha}^{-1}$ (Figure 6). The range of direct N_2O emissions including the first (Q1) and third quartile (Q3) of the emission map based on decade-long simulations is presented in Figure S5. Higher N_2O emissions are simulated in the states of Arkansas, Louisiana, Mississippi, and Missouri (Table S4). Simulated direct N_2O emissions are lower for the Western states, intermediate for Midwestern states, and highest for the Southeastern states. We also compared N_2O emission values with bulk density data from the data basin project (<https://databasin.org/maps/>)

which uses the National Resources Conservation Service soil water holding capacity and soil texture data to predict the soil bulk density. The croplands with a bulk density range of $1.29\text{--}1.36$ g/cm^3 showed more N_2O emissions. Lower N_2O emissions were predicted in the areas where bulk density ranged from 1.37 to 1.55 g/cm^3 .

Results based on overlay of productivity and emission maps showed that the states including Lower Midwest and Southern US states can produce more than 10 Mg/ha dry rainfed biomass with net carbon sequestration (Figure 7). The area with economic biomass yield had simulated biomass

FIGURE 6 Simulated mean emission of direct nitrous oxide as carbon dioxide equivalent during decade-long (2009–2018) sorghum cultivation across the continental United States

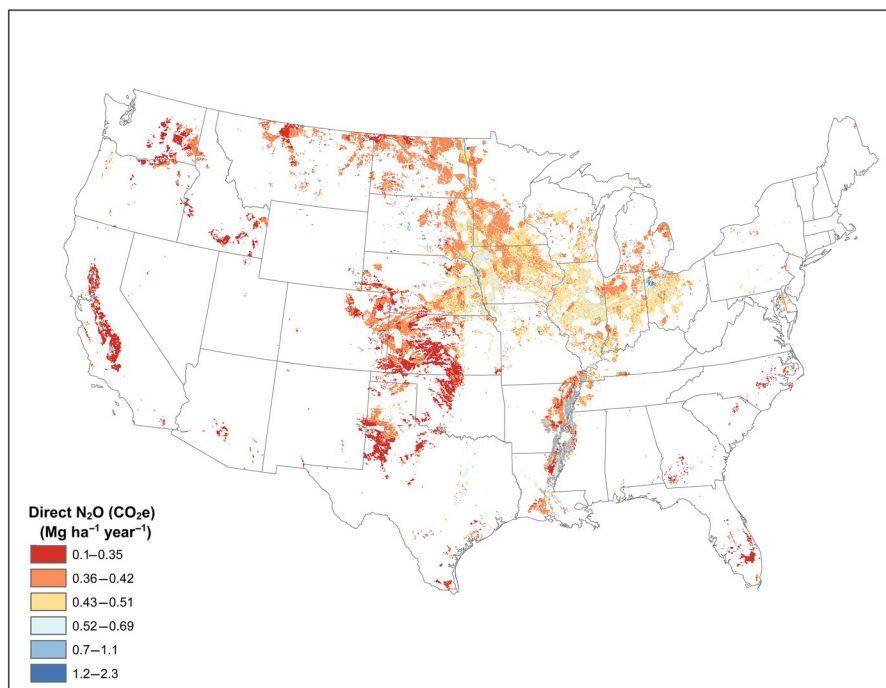
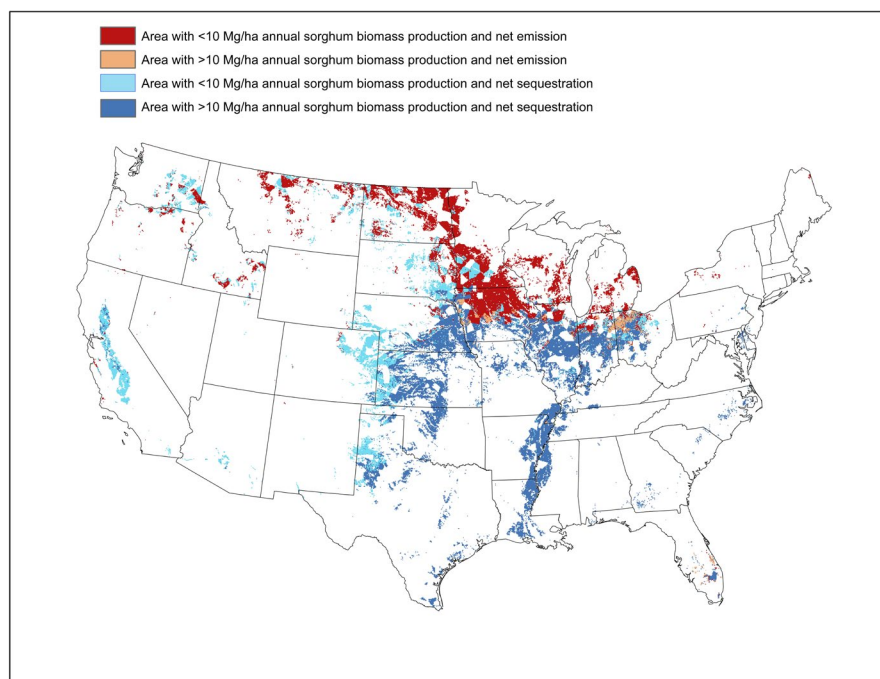


FIGURE 7 Cultivated lands of the continental United States that will produce different sorghum biomass yields with net carbon sequestration and emission; different classification criteria are defined in the legend



yield and net carbon sequestration of $11.9^{+2.3}_{-1.9}$ Mg ha⁻¹ year⁻¹ and $1.2^{+0.4}_{-0.4}$ Mg CO₂e ha⁻¹ year⁻¹, respectively. The Upper Midwest states showed less than 10 Mg/ha biomass yield with net carbon emission, and Western states showed lower biomass yield with net carbon sequestration (Figure 7). Our results suggest that 10.2 million ha of cultivated lands of the Southern and Lower Midwestern states will produce sorghum biomass yield >10 Mg/ha with net carbon sequestration. The spatial average biomass yield, SOC change, and N₂O emissions of all the simulated states are presented in Table S4.

4 | DISCUSSION

We generated spatially explicit estimates of potential biomass sorghum productivity, SOC change, and N₂O emissions across cultivated lands of the United States. The point scale process model was scaled up using detailed environmental, soil, and management representations to identify suitable locations for production of biomass sorghum across the continental United States. Our national-scale results are critical inputs to life cycle assessments, which require full GHG accounting and form the basis of important biofuel policies including the Low Carbon Fuel Standard and Renewable Fuel Standard. Yield predictions are also crucial for techno-economic analyses, as the tonnage-normalized cost of farming inputs and average transportation from the field to the biorefinery are all dependent on feedstock yields.

Sorghum biomass yield is sensitive to crop parameters relating to the radiation use efficiency, temperature, water stress, and carbon-to-nitrogen ratio. Our findings are consistent with the findings of earlier studies (Dou et al., 2014; Field, Marx, Easter, Adler, & Paustian, 2016; Necpálová et al., 2015; Stehfest, Heistermann, Priess, Ojima, & Alcamo, 2007; Wang et al., 2017). Earlier studies predicted sorghum biomass yields ranging from 1 to 25 Mg ha⁻¹ year⁻¹, with higher yields in the Southeastern United States. Our predicted average sorghum biomass yield and its spatial distribution are consistent with the observations/predictions of (Dou et al., 2014; Lee et al., 2018). Lower yield predictions in the Western United States are due to water-limiting conditions (Lee et al., 2012). The yield variability is higher in sorghum, and our predictions also represent those yield variabilities. The county-level data show a 69% coefficient of variation in rainfed sorghum yield (Kukul & Irmak, 2018); our results predict a 35% coefficient of variation in predicted biomass yield. The greater variability in sorghum biomass yield in the drier regions under rainfed conditions is due to variability in soil moisture availability for crop growth, which is very common in the Western United States (Gill et al., 2014). The model simulates crop production based on incoming photosynthetic radiation and the radiation use efficiency of a crop, where water stress based on available

water and potential evapotranspiration represents biomass yield decline. In this study, parameters for higher genetic potential dominated the yield response in the Southern region with optimum temperature, precipitation, and solar radiation. Biomass productivity in the Upper Midwestern United States was lower due to lower temperature and shorter growing seasons. The optimum temperature requirement for the vegetative growth and development of sorghum ranges from 26 to 34°C (Maiti, 1996). A previous experimental study documented a decrease in growth rate of sorghum under lower temperature treatments (Lyons, 2012). An earlier study has also documented the sensitivity of sorghum to chilling temperature, making sorghum cultivation challenging in higher latitude (Ercoli, Mariotti, Masoni, & Arduini, 2004). Chilling significantly affects plant growth in early spring, resulting in reductions in sorghum biomass yields. The yields in the Southeastern states are higher and correlated to higher temperature and precipitation in the region (Lee et al., 2018; Regassa & Wortmann, 2014). Lower biomass yield in the croplands of Western states is due to a lack of sufficient precipitation to support optimal crop growth. The model representation for high-yielding varieties and the yield response to extreme weather events need to be further improved to better represent new advancements in the genetic engineering. The average yield of $12.5^{+2.0}_{-2.3}$ Mg ha⁻¹ year⁻¹ in the Southern states can produce ethanol yields up to around 2,856–3,920 L ha⁻¹ year⁻¹ (Tang, Li, Li, & Xie, 2018).

The spatial pattern of the SOC stock predicted from our study across cultivated lands in the continental United States represents the general observed spatial pattern of SOC in the agricultural region of the United States (Tifafi, Guenet, & Hatté, 2018). SOC increased after decade-long cultivation of sorghum in most of study locations except in very few locations at higher latitudes. Bioenergy sorghum favors SOC sequestration due to higher root biomass (15%–20% of total biomass) resulting in increased annual input of organic matter to soil (Olson et al., 2012). Carbon flux from soils is sensitive to variability in temperature and precipitation (Lucht et al., 2002; Poulter et al., 2014; Schwalm et al., 2012). Temperature and precipitation are the major drivers governing yield response which defines the carbon sequestration.

Our predicted mean N₂O emission over continental United States is close to 1.25% of N input, which is consistent with IPCC recommendations (IPCC, 2006). In addition, our model projection shows variation in N₂O emission across study region due to variation in soil texture. Direct N₂O is produced from the nitrogen cycle due to denitrification and nitrification of the organic nitrogen. DAYCENT simulates the nitrification process based on soil ammonium concentration, volumetric soil water content, relative saturation, soil temperature, soil pH, and soil bulk density. The denitrification process is simulated based on the soil

nitrate concentration, labile C, O₂, and soil texture. Soil moisture is the major driver of N₂O emissions, as it defines the availability of oxygen in soil (Butterbach-Bahl, Baggs, Dannenmann, Kiese, & Zechmeister-Boltenstern, 2013). In the croplands with high moisture (more than 60% of water-filled pore space), the end product of denitrification is N₂ gas (Bouwman, 1998). Our predictions of N₂O emissions are also correlated with the soil bulk density. The bulk density can also be related to the soil moisture, and studies have used bulk density to predict soil moisture (Vereecken, Maes, Feyen, & Darius, 1989). In other words, the croplands with fine-textured soil resulted in higher N₂O emissions in comparison to croplands with coarse textured soil. Our findings of the soil texture dependence of N₂O emissions are consistent with findings of earlier studies which also reported higher N₂O emission from fine-textured soil compared to coarse-textured soil (Gaillard, Duval, Osterholz, & Kucharik, 2016). Del Grosso et al. (2006) reported 2%–2.5% N₂O emissions for fine-textured clay soil in comparison to 0.8%–1% for coarse-textured sand soil. DAYCENT model assumes higher SOC in fine-textured soil slows decomposition of plant residue compared to coarse texture soil. The higher SOC provides the C for denitrifying microbes leading to increased N₂O emission (Bouwman, Boumans, & Batjes, 2002).

Our study comes with some limitations and assumptions. Sorghum is dominantly grown in Southern United States as a result, there is lack of data on agricultural management for sorghum over continental United States. We used a constant fertilizer application rate of 120 kg N/ha based on the recommendation for the economic yield of dryland sorghum cultivation (Ogunlela, 1988; Restelatto, Pavinato, Sartor, Einsfeld, & Baldicera, 2015). Other limitations of this study include the use of constant phenotype and parameter representation over space and time.

In summary, our study made reasonable predictions of the average annual biomass sorghum yield across cultivated lands of the continental United States. The spatial average of simulated biomass sorghum yield for the continental United States was $9.7^{+2.1}_{-2.4}$ Mg ha⁻¹ year⁻¹. The spatial average of simulated biomass sorghum production for locations with economic productivity and net carbon sequestration was $11.9^{+2.3}_{-1.9}$ Mg ha⁻¹ year⁻¹. The productivity of biomass sorghum was found to be sensitive to temperature and precipitation; sorghum yield was lower in the upper latitude due to the sensitivity of sorghum to chilling temperature. The cultivated lands of Southern and Lower Midwest states with higher daily average annual temperature and precipitation are projected to have higher sorghum biomass yield. Our results of SOC sequestration showed the suitability of Southern states for sorghum cultivation with a net carbon sequestration of $1.54^{+0.33}_{-0.27}$ Mg CO₂e ha⁻¹ year⁻¹. Our

result predicts higher N₂O emissions for the locations with fine-texture soils. Based on the biomass yield and the emission trends of N₂O, the Southern states excluding the locations with fine-textured soils are ideal places for cultivating sorghum. Midwestern states including Kansas, Missouri, and Illinois predicted sorghum yield benefits with lower N₂O emissions. Overall, our results indicate that an area of 10.2 million ha of cultivated lands of the Southern and Lower Midwestern states can sustain economic biomass sorghum yield with net carbon sequestration under rain-fed conditions. Future studies on biomass sorghum productivity and its environmental impacts should focus on region-specific sorghum genotype and crop management representations.

ACKNOWLEDGEMENTS

This work conducted by the Joint BioEnergy Institute was supported by the Office of Science, Office of Biological and Environmental Research, of the US Department of Energy under contract no. DE-AC02-05CH11231. The authors thank Stephen Ogle and Ernie Marx from Colorado State University for technical support in accessing the soil data.

DATA AVAILABILITY STATEMENT

The data that support the findings of this study are available in the Supporting Information of this article. Additional data and code can be obtained from the corresponding author upon reasonable request.

ORCID

Sagar Gautam <https://orcid.org/0000-0002-0828-1631>

Corinne D. Scown <https://orcid.org/0000-0003-2078-1126>

REFERENCES

- Adler, P. R., Grosso, S. J. D., & Parton, W. J. (2007). Life-cycle assessment of net greenhouse-gas flux for bioenergy cropping systems. *Ecological Applications*, 17(3), 675–691. <https://doi.org/10.1890/05-2018>
- Allen, R. G., Pereira, L. S., Raes, D., & Smith, M. (1998). *Crop evapotranspiration – Guidelines for computing crop water requirements. FAO irrigation and drainage paper 56* (Vol. 300, Issue 9). Rome, Italy: FAO, D05109.
- Basso, B., Gargiulo, O., Paustian, K., Robertson, G. P., Porter, C., Grace, P. R., & Jones, J. W. (2011). Procedures for initializing soil organic carbon pools in the DSSAT-CENTURY model for agricultural systems. *Soil Science Society of America Journal*, 75(1), 69–78. <https://doi.org/10.2136/sssaj2010.0115>
- Beringer, T., Lucht, W., & Schaphoff, S. (2011). Bioenergy production potential of global biomass plantations under environmental and agricultural constraints. *GCB Bioenergy*, 3(4), 299–312. <https://doi.org/10.1111/j.1757-1707.2010.01088.x>
- Bouwman, A. (1998). Environmental science: Nitrogen oxides and tropical agriculture. *Nature*, 392(6679), 866–867. <https://doi.org/10.1038/31809>

- Bouwman, A., Boumans, L., & Batjes, N. (2002). Modeling global annual N_2O and NO emissions from fertilized fields. *Global Biogeochemical Cycles*, *16*(4), 28–21–28–29. <https://doi.org/10.1029/2001gb001812>
- Brilli, L., Bechini, L., Bindi, M., Carozzi, M., Cavalli, D., Conant, R., ... Bellocchi, G. (2017). Review and analysis of strengths and weaknesses of agro-ecosystem models for simulating C and N fluxes. *Science of the Total Environment*, *598*, 445–470. <https://doi.org/10.1016/j.scitotenv.2017.03.208>
- Butterbach-Bahl, K., Baggs, E. M., Dannenmann, M., Kiese, R., & Zechmeister-Boltenstern, S. (2013). Nitrous oxide emissions from soils: How well do we understand the processes and their controls? *Philosophical Transactions of the Royal Society B: Biological Sciences*, *368*(1621), 20130122. <https://doi.org/10.1098/rstb.2013.0122>
- Chaganti, V. N., Ganjgunte, G., Niu, G., Ulery, A., Flynn, R., Enciso, J. M., ... Kiniry, J. R. (2020). Effects of treated urban wastewater irrigation on bioenergy sorghum and soil quality. *Agricultural Water Management*, *228*, 105894. <https://doi.org/10.1016/j.agwat.2019.105894>
- Coleman, K., Jenkinson, D. S., Crocker, G. J., Grace, P. R., Klír, J., Körschens, M., ... Richter, D. D. (1997). Simulating trends in soil organic carbon in long-term experiments using RothC-26.3. *Geoderma*, *81*(1–2), 29–44. [https://doi.org/10.1016/S0016-7061\(97\)00079-7](https://doi.org/10.1016/S0016-7061(97)00079-7)
- Contreras-Govea, F. E., Lauriault, L. M., Marsalis, M., Angadi, S., & Puppala, N. (2009). Performance of forage sorghum-legume mixtures in southern High Plains, USA. *Forage and Grazinglands*, *7*(1). <https://doi.org/10.1094/FG-2009-0401-01-RS>
- Cotton, J., Burow, G., Acosta-Martinez, V., & Moore-Kucera, J. (2013). Biomass and cellulosic ethanol production of forage sorghum under limited water conditions. *BioEnergy Research*, *6*(2), 711–718. <https://doi.org/10.1007/s12155-012-9285-0>
- Cui, X., Kavvada, O., Huntington, T., & Scown, C. D. (2018). Strategies for near-term scale-up of cellulosic biofuel production using sorghum and crop residues in the US. *Environmental Research Letters*, *13*(12), 124002. <https://doi.org/10.1088/1748-9326/aae6e3>
- Dale, B. E., Anderson, J. E., Brown, R. C., Csonka, S., Dale, V. H., Herwick, G., ... Wang, M. Q. (2014). Take a closer look: Biofuels can support environmental, economic and social goals. *Environmental Science & Technology*, *48*(13), 7200–7203. <https://doi.org/10.1021/es5025433>
- Dalla Marta, A., Mancini, M., Orlando, F., Natali, F., Capocchi, L., & Orlandini, S. (2014). Sweet sorghum for bioethanol production: Crop responses to different water stress levels. *Biomass and Bioenergy*, *64*, 211–219. <https://doi.org/10.1016/j.biombioe.2014.03.033>
- Daly, C., Taylor, G., Gibson, W., Parzybok, T., Johnson, G., & Pasteris, P. (2000). High-quality spatial climate data sets for the United States and beyond. *Transactions of the ASAE*, *43*(6), 1957–1962. <https://doi.org/10.13031/2013.3101>
- Del Grosso, S., Halvorson, A., & Parton, W. (2008). Testing DAYCENT model simulations of corn yields and nitrous oxide emissions in irrigated tillage systems in Colorado. *Journal of Environmental Quality*, *37*(4), 1383–1389. <https://doi.org/10.2134/jeq2007.0292>
- Del Grosso, S., Ojima, D., Parton, W., Mosier, A., Peterson, G., & Schimel, D. (2002). Simulated effects of dryland cropping intensification on soil organic matter and greenhouse gas exchanges using the DAYCENT ecosystem model. *Environmental Pollution*, *116*, S75–S83. [https://doi.org/10.1016/S0269-7491\(01\)00260-3](https://doi.org/10.1016/S0269-7491(01)00260-3)
- Del Grosso, S., Parton, W., Mosier, A., Hartman, M., Brenner, J., Ojima, D., & Schimel, D. (2001). Simulated interaction of carbon dynamics and nitrogen trace gas fluxes using the DAYCENT model. *Modeling Carbon and Nitrogen Dynamics for Soil Management*, 303–332. Boca Raton, FL: CRC Press.
- Del Grosso, S. J., Parton, W. J., Mosier, A. R., Walsh, M. K., Ojima, D. S., & Thornton, P. E. (2006). DAYCENT national-scale simulations of nitrous oxide emissions from cropped soils in the United States. *Journal of Environmental Quality*, *35*(4), 1451–1460. <https://doi.org/10.2134/jeq2005.0160>
- Dou, F., Wight, J. P., Wilson, L. T., Storlien, J. O., & Hons, F. M. (2014). Simulation of biomass yield and soil organic carbon under bioenergy sorghum production. *PLoS One*, *9*(12), e115598. <https://doi.org/10.1371/journal.pone.0115598>
- Duval, B. D., Anderson-Teixeira, K. J., Davis, S. C., Keogh, C., Long, S. P., Parton, W. J., & DeLucia, E. H. (2013). Predicting greenhouse gas emissions and soil carbon from changing pasture to an energy crop. *PLoS One*, *8*(8), e72019. <https://doi.org/10.1371/journal.pone.0072019>
- Duval, B. D., Ghimire, R., Hartman, M. D., & Marsalis, M. A. (2018). Water and nitrogen management effects on semiarid sorghum production and soil trace gas flux under future climate. *PLoS One*, *13*(4), e0195782. <https://doi.org/10.1371/journal.pone.0195782>
- Ercoli, L., Mariotti, M., Masoni, A., & Arduini, I. (2004). Growth responses of sorghum plants to chilling temperature and duration of exposure. *European Journal of Agronomy*, *21*(1), 93–103. [https://doi.org/10.1016/S1161-0301\(03\)00093-5](https://doi.org/10.1016/S1161-0301(03)00093-5)
- Farina, R., Seddaiu, G., Orsini, R., Steglich, E., Roggero, P. P., & Francaviglia, R. (2011). Soil carbon dynamics and crop productivity as influenced by climate change in a rainfed cereal system under contrasting tillage using EPIC. *Soil and Tillage Research*, *112*(1), 36–46. <https://doi.org/10.1016/j.still.2010.11.002>
- Field, J. L., Marx, E., Easter, M., Adler, P. R., & Paustian, K. (2016). Ecosystem model parameterization and adaptation for sustainable cellulosic biofuel landscape design. *GCB Bioenergy*, *8*(6), 1106–1123. <https://doi.org/10.1111/gcbb.12316>
- Gaillard, R., Duval, B. D., Osterholz, W. R., & Kucharik, C. J. (2016). Simulated effects of soil texture on nitrous oxide emission factors from corn and soybean agroecosystems in Wisconsin. *Journal of Environmental Quality*, *45*(5), 1540–1548. <https://doi.org/10.2134/jeq2016.03.0112>
- Gill, J. R., Burks, P. S., Staggenborg, S. A., Odvody, G. N., Heiniger, R. W., Macoon, B., ... Rooney, W. L. (2014). Yield results and stability analysis from the sorghum regional biomass feedstock trial. *BioEnergy Research*, *7*(3), 1026–1034. <https://doi.org/10.1007/s12155-014-9445-5>
- Giltrap, D. L., Li, C., & Sagar, S. (2010). DNDC: A process-based model of greenhouse gas fluxes from agricultural soils. *Agriculture, Ecosystems & Environment*, *136*(3–4), 292–300. <https://doi.org/10.1016/j.agee.2009.06.014>
- Han, K. J., Pitman, W. D., Alison, M. W., Harrell, D. L., Viator, H. P., McCormick, M. E., ... Day, D. F. (2012). Agronomic considerations for sweet sorghum biofuel production in the south-central USA. *BioEnergy Research*, *5*(3), 748–758. <https://doi.org/10.1007/s12155-012-9185-3>
- Hughes, J., Lloyd, A., Huntingford, C., Finch, J., & Harding, R. (2010). The impact of extensive planting of Miscanthus as an energy crop on future CO_2 atmospheric concentrations. *GCB Bioenergy*, *2*(2), 79–88. <https://doi.org/10.1111/j.1757-1707.2010.01042.x>

- Huntington, T., Cui, X., Mishra, U., & Scown, C. D. (2020). Machine learning to predict biomass sorghum yields under future climate scenarios. *Biofuels, Bioproducts and Biorefining*, 14(3), 566–577. <https://doi.org/10.1002/bbb.2087>
- IPCC. (2006). IPCC guidelines for national greenhouse gas inventories. In *Intergovernmental panel On climate* (Vol. 3). Hayama, Japan: Institute for Global Environmental Strategies.
- Kukul, M. S., & Irmak, S. (2018). Climate-driven crop yield and yield variability and climate change impacts on the U.S. Great Plains agricultural production. *Scientific Reports*, 8(1), 3450. <https://doi.org/10.1038/s41598-018-21848-2>
- Lee, D. K., Aberle, E., Anderson, E. K., Anderson, W., Baldwin, B. S., Baltensperger, D., ... Owens, V. (2018). Biomass production of herbaceous energy crops in the United States: Field trial results and yield potential maps from the multiyear regional feedstock partnership. *GCB Bioenergy*, 10(10), 698–716. <https://doi.org/10.1111/gcbb.12493>
- Lee, J., Pedroso, G., Linquist, B. A., Putnam, D., van Kessel, C., & Six, J. (2012). Simulating switchgrass biomass production across ecoregions using the DAYCENT model. *GCB Bioenergy*, 4(5), 521–533. <https://doi.org/10.1111/j.1757-1707.2011.01140.x>
- Liu, H., Ren, L., Spiertz, H., Zhu, Y., & Xie, G. H. (2015). An economic analysis of sweet sorghum cultivation for ethanol production in North China. *GCB Bioenergy*, 7(5), 1176–1184. <https://doi.org/10.1111/gcbb.12222>
- Lucht, W., Prentice, I. C., Myneni, R. B., Sitch, S., Friedlingstein, P., Cramer, W., ... Smith, B. (2002). Climatic control of the high-latitude vegetation greening trend and Pinatubo effect. *Science*, 296(5573), 1687–1689. <https://doi.org/10.1126/science.1071828>
- Lyons, J. (2012). *Low temperature stress in crop plants: The role of the membrane*. Amsterdam, The Netherlands: Elsevier.
- Maiti, R. (1996). *Sorghum science*. Enfield, NH: Science Publishers Inc.
- McKone, T., Nazaroff, W., Berck, P., Auffhammer, M., Lipman, T., Torn, M., ... Mishra, U. (2011). Grand challenges for life-cycle assessment of biofuels. *Environmental Science & Technology*, 45(5), 1751–1756.
- Menne, M. J., Durre, I., Vose, R. S., Gleason, B. E., & Houston, T. G. (2012). An overview of the global historical climatology network-daily database. *Journal of Atmospheric and Oceanic Technology*, 29(7), 897–910. <https://doi.org/10.1175/JTECH-D-11-00103.1>
- Mishra, U., Torn, M. S., & Fingerman, K. (2013). Miscanthus biomass productivity within US croplands and its potential impact on soil organic carbon. *GCB Bioenergy*, 5(4), 391–399. <https://doi.org/10.1111/j.1757-1707.2012.01201.x>
- NASS. (2018). *Sorghum database – National Agriculture Statistics Services*. Retrieved from <https://quickstats.nass.usda.gov/>
- Necpálová, M., Anex, R. P., Fienen, M. N., Del Grosso, S. J., Castellano, M. J., Sawyer, J. E., ... Barker, D. W. (2015). Understanding the DayCent model: Calibration, sensitivity, and identifiability through inverse modeling. *Environmental Modelling Software*, 66, 110–130. <https://doi.org/10.1016/j.envsoft.2014.12.011>
- Ogle, S. M., Breidt, F. J., Easter, M., Williams, S., Killian, K., & Paustian, K. (2010). Scale and uncertainty in modeled soil organic carbon stock changes for US croplands using a process-based model. *Global Change Biology*, 16(2), 810–822. <https://doi.org/10.1111/j.1365-2486.2009.01951.x>
- Ogunlela, V. (1988). Growth and yield responses of dryland grain sorghum to nitrogen and phosphorus fertilization in a ferruginous tropical soil (Haplustalf). *Fertilizer Research*, 17(2), 125–135. <https://doi.org/10.1007/BF01050273>
- Olson, S. N., Ritter, K., Rooney, W., Kemanian, A., McCarl, B. A., Zhang, Y., ... Mullet, J. (2012). High biomass yield energy sorghum: Developing a genetic model for C₄ grass bioenergy crops. *Biofuels, Bioproducts and Biorefining*, 6(6), 640–655. <https://doi.org/10.1002/bbb.1357>
- Oubeidillah, A. A., Kao, S.-C., Ashfaq, M., Naz, B. S., & Tootle, G. (2014). A large-scale, high-resolution hydrological model parameter data set for climate change impact assessment for the conterminous US. *Hydrology and Earth System Sciences*, 18(1), 67–84. <https://doi.org/10.5194/hess-18-67-2014>
- Parton, W. J., Hartman, M., Ojima, D., & Schimel, D. (1998). DAYCENT and its land surface submodel: Description and testing. *Global and Planetary Change*, 19(1–4), 35–48. [https://doi.org/10.1016/S0921-8181\(98\)00040-X](https://doi.org/10.1016/S0921-8181(98)00040-X)
- Poulter, B., Frank, D., Ciais, P., Myneni, R. B., Andela, N., Bi, J., ... van der Werf, G. R. (2014). Contribution of semi-arid ecosystems to interannual variability of the global carbon cycle. *Nature*, 509(7502), 600–603. <https://doi.org/10.1038/nature13376>
- R Core Team. (2018). *R: A language and environment for statistical computing*. Vienna, Austria: R Foundation for Statistical Computing. Retrieved from <http://www.R-project.org>
- Regassa, T. H., & Wortmann, C. S. (2014). Sweet sorghum as a bioenergy crop: Literature review. *Biomass and Bioenergy*, 64, 348–355. <https://doi.org/10.1016/j.biombioe.2014.03.052>
- Restelatto, R., Pavinato, P. S., Sartor, L. R., Einsfeld, S. M., & Baldicera, F. P. (2015). Nitrogen efficiency and nutrient absorption by a sorghum-oats forage succession. *Advances in Agriculture*, 2015, 1–12. <https://doi.org/10.1155/2015/702650>
- Rooney, W. L., Blumenthal, J., Bean, B., & Mullet, J. E. (2007). Designing sorghum as a dedicated bioenergy feedstock. *Biofuels, Bioproducts and Biorefining*, 1(2), 147–157. <https://doi.org/10.1002/bbb.15>
- Saxton, K. E., & Rawls, W. J. (2006). Soil water characteristic estimates by texture and organic matter for hydrologic solutions. *Soil Science Society of America Journal*, 70(5), 1569–1578. <https://doi.org/10.2136/sssaj2005.0117>
- Schimel, D., Ojima, D., Hartman, M., Parton, W., Brenner, J., Mosier, A., ... Ma, L. (2001). *Simulated interaction of carbon dynamics and nitrogen trace gas fluxes using the DAYCENT model*. Boca Raton, FL: CRC Press.
- Schwalm, C. R., Williams, C. A., Schaefer, K., Baldocchi, D., Black, T. A., Goldstein, A. H., ... Scott, R. L. (2012). Reduction in carbon uptake during turn of the century drought in western North America. *Nature Geoscience*, 5(8), 551–556. <https://doi.org/10.1038/ngeo1529>
- Scown, C. D., Nazaroff, W. W., Mishra, U., Strogen, B., Lobscheid, A. B., Masanet, E., ... McKone, T. E. (2012). Lifecycle greenhouse gas implications of US national scenarios for cellulosic ethanol production. *Environmental Research Letters*, 7(1), 014011. <https://doi.org/10.1088/1748-9326/7/1/014011>
- Soil Survey Staff. (2015). *Natural Resources Conservation Service, United States Department of Agriculture. Soil Survey Geographic (SSURGO) database*. Retrieved from <https://sdmdataaccess.sc.egov.usda.gov>
- Stehfest, E., Heistermann, M., Priess, J. A., Ojima, D. S., & Alcamo, J. (2007). Simulation of global crop production with the ecosystem model DayCent. *Ecological Modelling*, 209(2–4), 203–219. <https://doi.org/10.1016/j.ecolmodel.2007.06.028>
- Storlien, J. O., Hons, F. M., Wight, J. P., & Heilman, J. L. (2014). Carbon dioxide and nitrous oxide emissions impacted by

- bioenergy sorghum management. *Soil Science Society of America Journal*, 78(5), 1694–1706. <https://doi.org/10.2136/sssaj2014.04.0176>
- Tang, C., Li, S., Li, M., & Xie, G. H. (2018). Bioethanol potential of energy Sorghum grown on marginal and arable lands. *Frontiers in Plant Science*, 9, 440. <https://doi.org/10.3389/fpls.2018.00440>
- Tifafi, M., Guenet, B., & Hatté, C. (2018). Large differences in global and regional total soil carbon stock estimates based on SoilGrids, HWSD, and NCSCD: Intercomparison and evaluation based on field data from USA, England, Wales, and France. *Global Biogeochemical Cycles*, 32(1), 42–56. <https://doi.org/10.1002/2017GB005678>
- USEPA. (2005). *Inventory of U.S. greenhouse gas emissions and sinks: 1990–2003*. Washington, DC: USEPA.
- USEPA. (2015). *Inventory of U.S. greenhouse gas emissions and sinks: 1990–2014*. Cincinnati, OH: U.S. Environmental Protection Agency.
- Vereecken, H., Maes, J., Feyen, J., & Darius, P. (1989). Estimating the soil moisture retention characteristic from texture, bulk density, and carbon content. *Soil Science*, 148(6), 389–403. <https://doi.org/10.1097/00010694-198912000-00001>
- Wang, Y., Dou, F., Storlien, J. O., Wight, J. P., Paustian, K. H., Del Grosso, S. J., & Hons, F. M. (2017). Simulating impacts of bioenergy Sorghum residue return on soil organic carbon and greenhouse gas emissions using the DAYCENT model. In *Global soil security*, Progress in Soil Science, (pp. 167–180). Cham, Switzerland: Springer.
- West, L., Wills, S., & Loecke, T. (2013). *Rapid assessment of US Soil Carbon (RaCA) for climate change and conservation planning: Summary of soil carbon stocks for the conterminous United States*. Washington, DC: U.S. Department of Agriculture, Natural Resources Conservation Service.
- Wight, J., Hons, F., Storlien, J., Provin, T., Shahandeh, H., & Wiedenfeld, R. (2012). Management effects on bioenergy sorghum growth, yield and nutrient uptake. *Biomass and Bioenergy*, 46, 593–604. <https://doi.org/10.1016/j.biombioe.2012.06.036>
- Yang, L., Jin, S., Danielson, P., Homer, C., Gass, L., Bender, S. M., ... Xian, G. (2018). A new generation of the United States National Land Cover Database: Requirements, research priorities, design, and implementation strategies. *ISPRS Journal of Photogrammetry and Remote Sensing*, 146, 108–123. <https://doi.org/10.1016/j.isprsjprs.2018.09.006>
- Yu, J., XuZhang, & Tan, T. (2008). Ethanol production by solid state fermentation of sweet sorghum using thermotolerant yeast strain. *Fuel Processing Technology*, 89(11), 1056–1059. <https://doi.org/10.1016/j.fuproc.2008.04.008>
- Zhang, Y., Hansen, N., Trout, T., Nielsen, D., & Paustian, K. (2018). Modeling deficit irrigation of maize with the DayCent model. *Agronomy Journal*, 110(5), 1754–1764. <https://doi.org/10.2134/agronj2017.10.0585>

SUPPORTING INFORMATION

Additional supporting information may be found online in the Supporting Information section.

How to cite this article: Gautam S, Mishra U, Scown CD, Zhang Y. Sorghum biomass production in the continental United States and its potential impacts on soil organic carbon and nitrous oxide emissions. *GCB Bioenergy*. 2020;12:878–890. <https://doi.org/10.1111/gcbb.12736>