

UCLA
Contemporary Music Score Collection

Title

Contracorriente

Permalink

<https://escholarship.org/uc/item/0r20j0z5>

Author

Segali, Max

Publication Date

2020

CONTRACORRIENTE

DUO

ALTO SAX &
prepared CELLO

Max Segali

2019

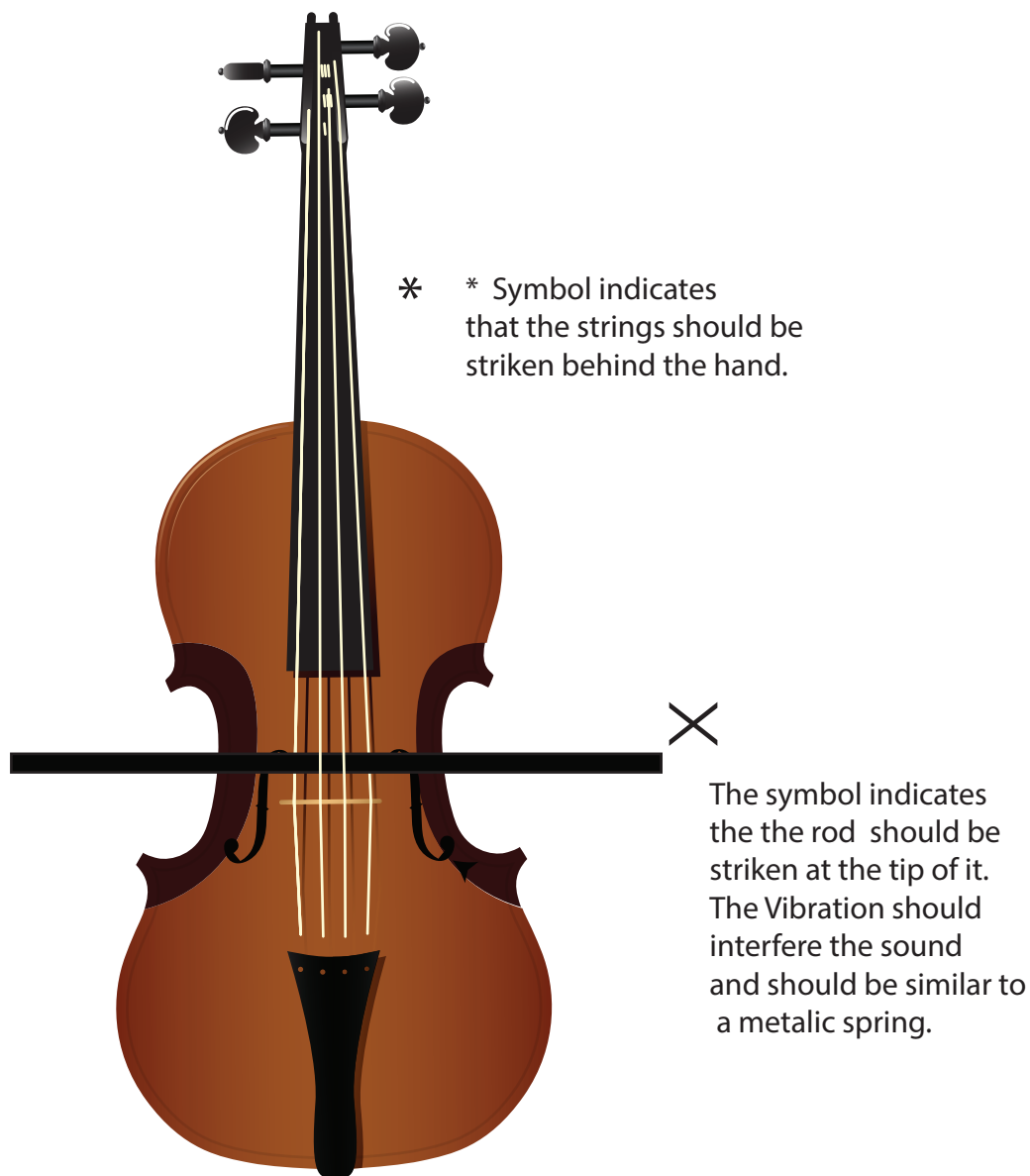
Aprox. 6 min.

“Diamonds know their value, that is why they hide deep
where few can find them”

Matshona Dhliwayo

Preparation instructions:

Place a soft, light piece of wood (dowel or rod) of about 50 cm long and 0.5 mm thick max), beneath strings 2 and 3 and above strings 1 and 4. The piece of wood must be stable when in place and when pulsated (at the tip of it) must vibrate. The rod must be place approximately at an inch and a half to the bridge.



Play with the intention of discover the beauty hidden among the noise.

CONTRACORRIENTE

Aprox. 6 min.

Score in C

Max Leonardo Duerto Segali
2019

for Cello: ROD placed
at aprox 1,5 inches
of the bridge

♩ = 150

Alto Sax

Use Rod to bow,
make as much as continuous
sound as possible

NO BOW

ppp *mp ppp*

con molta espressione

Cello

p

A. Sax.

Ce.

mp *ddd* *mp* *ddd*

A. Sax.

Ce.

mp *pp*

mf *mf* *mf*

Contracorriente

2

A. Sx.

Musical score for A. Sx. measures 14-17. The top staff is in treble clef with a 4/8 time signature. It features a melodic line with triplets and slurs. Dynamics include *mp pp* and *mp*. The bottom staff is in bass clef with a 4/8 time signature, providing a harmonic accompaniment with chords and slurs.

A. Sx.

Musical score for A. Sx. measures 18-20. The top staff is in treble clef with a 4/8 time signature. It features a melodic line with triplets and slurs. Dynamics include *mp* and *mf*. The bottom staff is in bass clef with a 4/8 time signature, providing a harmonic accompaniment with chords and slurs.

A. Sx.

Musical score for A. Sx. measures 21-23. The top staff is in treble clef with a 4/8 time signature. It features a melodic line with triplets and slurs. Dynamics include *mp*, *p*, and *mf*. A box labeled 'B' is positioned above the staff. The bottom staff is in bass clef with a 4/8 time signature, providing a harmonic accompaniment with chords and slurs.

Contracorriente

A. Sx. 24

Ce. 24

mf

A. Sx. 26

p *mf* *mf*

Ce. 26

mf

A. Sx. 28

mf *p* *p*

C

Ce. 28

sfz *mf* *sfz*

Contracorriente

4

D

$\text{♩} = 75$

A. Sx.

mf

Ce.

sfz

A. Sx.

f

Ce.

sfz

A. Sx.

mf

f

Ce.

sfz

A. Sx.

mf

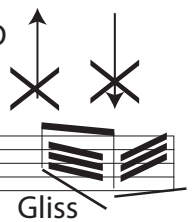
f

Ce.

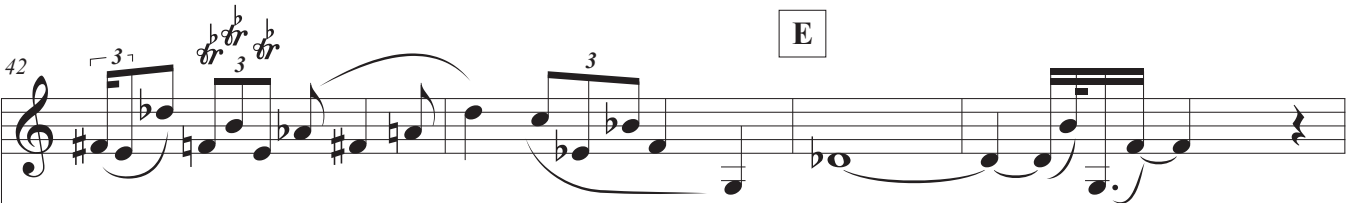
mf

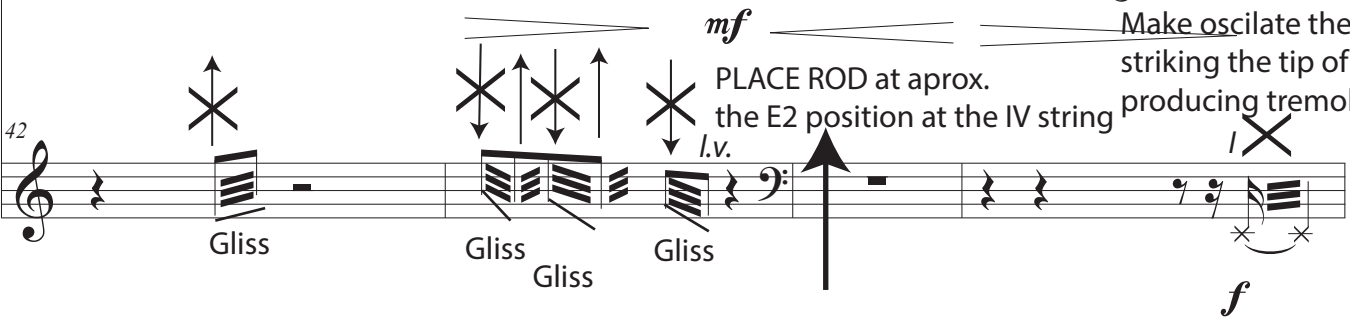
p

Make Gliss. with ROD simultaneously with pizz.



Contracorrente

A. Sx. 


Ce. 


mf Make oscilate the rod striking the tip of it producing tremollo

Gliss Gliss Gliss

PLACE ROD at aprox. the E2 position at the IV string

f

A. Sx. 

Ce. 

mf Press Rod to get pitch

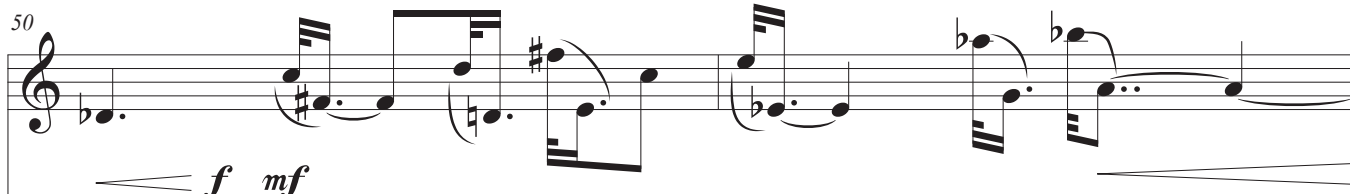
Pizz. Pizz. Pizz. Pizz.


f

A. Sx. 

Ce. 

mf Pizz. Pizz.

A. Sx. 

Ce. 

f *mf*

Contracorriente

6

A. Sx. *f*

Ce. *mp*

reposition ROD at C3 (String IV)

A. Sx. *mf*

Ce. *mp* *mf*

reposition ROD at 1,5 inches of the bridge

A. Sx. *mf*

Ce. *mf*

Contracorriente

59 A. Sx.

mf

59 Ce.

3

62 A. Sx.

sfz *sfz* *mf*

62 Ce.

mf pizz. X pizz. X

63 A. Sx.

F *sfz* *mf* tr 3 3

63 Ce.

pizz. X pizz. 3 pizz. X

Contracorriente

8

65

A. Sx.

mf *f* *mp*

Create the rythm struming fingers downward like a guitar, the presence of the rod will produce a metallic percussive sound added to the pitch

Ce.

G

A. Sx.

ord.
(WITH THE BOW) ARCO

Bow between the rod and the bridge

Ce.

H

A. Sx.

ff

Strike the rod's tip with left hand at the same time of bowing with right hand producing a loud tremollo

Ce.

Contracorriente

A. Sx. 72 *f* *mf* *mf* *mf* *mf*

Ce. 72 *mf* *mf* *mf* *mf* *mf*

con molta espressione ad. lib.

A. Sx. 75 *mf* *mf* *mf*

Ce. 75 *mf* *mf* *mf*

A. Sx. 77 *f*

Ce. 77 *mf* *mf* *mf*

Contracorriente

10

I

A. Sx.

Musical notation for A. Sx. and Ce. measures 79-80. A. Sx. has a treble clef, 4/4 time, and contains eighth notes with slurs and triplets. Ce. has a bass clef, 4/4 time, and contains a sustained low note with an 'X' mark above it. Dynamics include *mf* and *mf*.

mf

mf

mf

J

A. Sx.

Musical notation for A. Sx. and Ce. measures 81-82. A. Sx. has a treble clef, 4/4 time, and contains eighth notes with slurs and triplets. Ce. has a bass clef, 4/4 time, and contains a sustained low note with an 'X' mark and 'Gliss' text. Dynamics include *fz* and *f*.

fz

f

81

X Gliss

+ Interrupt the the note with the A# lateral key

A. Sx.

Musical notation for A. Sx. and Ce. measures 82-83. A. Sx. has a treble clef, 4/4 time, and contains eighth notes with slurs and triplets. Ce. has a bass clef, 4/4 time, and contains a sustained low note with an 'X' mark and 'Gliss.' text. Dynamics include *mf*.

Make glissandi simultaneously with striking of the ROD

82

X Gliss.

X Gliss.

mf

83

A. Sx.

+ + Ord

Ce.

mf

Gliss

mf sfz

Detailed description: This system covers measures 83 and 84. The A. Sx. staff features a melodic line starting with a triplet of eighth notes. Above the staff, four '+' marks are placed above the first four notes. The word 'Ord' is written above the staff between the second and third '+' marks. The Ce. staff shows a glissando line with 'X' marks at the beginning and end of the glissando segments, and the word 'Gliss' written above the line. Dynamics include 'mf' (mezzo-forte) and 'sfz' (sforzando).

84

A. Sx.

3

Ce.

mf

Gliss

Gliss

Detailed description: This system covers measures 84 and 85. The A. Sx. staff features a melodic line starting with a triplet of eighth notes, indicated by the number '3' above the staff. The Ce. staff shows a glissando line with 'X' marks and the word 'Gliss' written above the line. The dynamic 'mf' is indicated at the beginning of the Ce. staff.

+ Interrupt the the note with the A# lateral key

85

A. Sx.

+ + + + +

Ce.

Gliss

Gliss out of the tastò

Detailed description: This system covers measures 85 and 86. The A. Sx. staff features a melodic line with five '+' marks above it. The Ce. staff shows a glissando line with 'X' marks and the word 'Gliss' written above the line. The phrase 'Gliss out of the tastò' is written above the line between the second and third 'X' marks. The dynamic 'mf' is indicated at the beginning of the Ce. staff.

Contracorriente

12 Interrupt the the note with the A# lateral key

Aprox. pitch

K

A. Sx.

86 + + + + + + +

f *f*

Ce.

86

p

reduce the BOW speed progressively producing a sound similar to the guttural sound of the sax

A. Sx.

89

f *sfz*

Guttural sound, pitchless, flutter of the throat, change sound with random keys

Very Slow bow, strike softly the rod

Ce.

89

pp

A. Sx.

94 ord.

mf

Ce.

94

mf

A. Sx. 97

p

Ce. 97

A. Sx. 101

mf

Ce. 101

A. Sx. 105

mf

Ce. 105

ord.
Pizz.
l.v.

mf

Contracorriente

14

A. Sx.

107

p

Ce.

107

A. Sx.

109

Ce.

109

A. Sx.

110

Ce.

110

pizz. X

pizz.

pizz. X

pizz. X

Contracorriente

112

A. Sx.

Ce.

mf

pizz. l.v.

pizz. l.v.

pizz.

pizz. l.v.

* Guitar pizz behind left hand

116

A. Sx.

Ce.

116

* * * *

* * * *

3

* * *

120

A. Sx.

Ce.

120

pizz. l.v.

Guitar pizz.

* Guitar pizz behind left hand

l.v.

A. Sx. *mf*

Guitar pizz. l.v. * Guitar pizz behind left hand l.v. ord. pizz. *p*

Ce. *mf*

A. Sx. *mf*

Ce. *mf* *f*

Guitar pizz. l.v. pizz. *f*

A. Sx. *p*

Ce. *p* *ARCO*

ord. pizz. *p*

slapping ad lib. on string I with the very tip of the bow using the hairy part of it to get a percussive effect, bow between rod and bridge

A. Sx. *p* *ppp*

Subtones

Gliss. ad lib, JETÉ and bow slapping

Ce. *pp* *ppp*

Increase the amount of air per pitch