

UCSF

UC San Francisco Previously Published Works

Title

Fine-mapping the genetic association of the major histocompatibility complex in multiple sclerosis: HLA and non-HLA effects.

Permalink

<https://escholarship.org/uc/item/0rw1t103>

Journal

PLoS Genetics, 9(11)

Authors

Patsopoulos, Nikolaos

Barcellos, Lisa

Hintzen, Rogier

et al.

Publication Date

2013-11-01

DOI

10.1371/journal.pgen.1003926

Peer reviewed

Fine-Mapping the Genetic Association of the Major Histocompatibility Complex in Multiple Sclerosis: HLA and Non-HLA Effects

Nikolaos A. Patsopoulos^{1,2,3,4}, Lisa F. Barcellos^{5,6}, Rogier Q. Hintzen⁷, Catherine Schaefer⁶, Cornelia M. van Duijn⁸, Janelle A. Noble⁹, Towfique Raj^{1,3,4}, IMSGC[¶], ANZgene[¶], Pierre-Antoine Gourraud¹⁰, Barbara E. Stranger^{11,12}, Jorge Oksenberg¹⁰, Tomas Olsson¹³, Bruce V. Taylor¹⁴, Stephen Sawcer¹⁵, David A. Hafler^{4,16}, Mary Carrington^{17,18}, Philip L. De Jager^{1,3,4,9*}, Paul I. W. de Bakker^{2,3,4,19,20,9*}

1 Program in Translational NeuroPsychiatric Genomics, Institute for the Neurosciences, Department of Neurology, Brigham & Women's Hospital, Boston, Massachusetts, United States of America, **2** Division of Genetics, Department of Medicine, Brigham & Women's Hospital, Harvard Medical School, Boston, Massachusetts, United States of America, **3** Harvard Medical School, Boston, Massachusetts, United States of America, **4** Broad Institute of Harvard and Massachusetts Institute of Technology, Cambridge, Massachusetts, United States of America, **5** Division of Epidemiology, Genetic Epidemiology and Genomics Laboratory, School of Public Health, University of California, Berkeley, Berkeley, California, United States of America, **6** Kaiser Permanente Division of Research, Oakland, California, United States of America, **7** Department of Neurology, MS Centre ErasMS, Erasmus MC, Rotterdam, The Netherlands, **8** Genetic Epidemiology Unit, Department of Epidemiology and Biostatistics and Clinical Genetics, Erasmus MC, Rotterdam, The Netherlands, **9** Children's Hospital Oakland Research Institute, Oakland, California, United States of America, **10** Department of Neurology, University of California at San Francisco, San Francisco, California, United States of America, **11** Section of Genetic Medicine, Department of Medicine, University of Chicago, Chicago, Illinois, United States of America, **12** Institute for Genomics and Systems Biology, University of Chicago, Chicago, Illinois, United States of America, **13** Department of Clinical Neuroscience CMM, Karolinska Institutet, Stockholm, Sweden, **14** Menzies Research Institute Tasmania, University of Tasmania, Hobart, Australia, **15** University of Cambridge, Department of Clinical Neuroscience, Addenbrooke's Hospital, Cambridge, United Kingdom, **16** Department of Neurology and Department of Immunobiology, Yale University, School of Medicine, New Haven, Connecticut, United States of America, **17** Cancer and Inflammation Program, Laboratory of Experimental Immunology, SAIC Frederick, Frederick National Laboratory for Cancer Research, Frederick, Maryland, United States of America, **18** Ragon Institute of MGH, MIT, and Harvard, Charlestown, Massachusetts, United States of America, **19** Department of Medical Genetics, Division of Biomedical Genetics, University Medical Center, Utrecht, The Netherlands, **20** Julius Center for Health Sciences and Primary Care, University Medical Center, Utrecht, The Netherlands

Abstract

The major histocompatibility complex (MHC) region is strongly associated with multiple sclerosis (MS) susceptibility. *HLA-DRB1*15:01* has the strongest effect, and several other alleles have been reported at different levels of validation. Using SNP data from genome-wide studies, we imputed and tested classical alleles and amino acid polymorphisms in 8 classical human leukocyte antigen (HLA) genes in 5,091 cases and 9,595 controls. We identified 11 statistically independent effects overall: 6 *HLA-DRB1* and one *DPB1* alleles in class II, one *HLA-A* and two *B* alleles in class I, and one signal in a region spanning from *MICB* to *LST1*. This genomic segment does not contain any HLA class I or II genes and provides robust evidence for the involvement of a non-HLA risk allele within the MHC. Interestingly, this region contains the *TNF* gene, the cognate ligand of the well-validated *TNFRSF1A* MS susceptibility gene. The classical HLA effects can be explained to some extent by polymorphic amino acid positions in the peptide-binding grooves. This study dissects the independent effects in the MHC, a classical region for MS susceptibility that harbors multiple risk alleles.

Citation: Patsopoulos NA, Barcellos LF, Hintzen RQ, Schaefer C, van Duijn CM, et al. (2013) Fine-Mapping the Genetic Association of the Major Histocompatibility Complex in Multiple Sclerosis: HLA and Non-HLA Effects. *PLoS Genet* 9(11): e1003926. doi:10.1371/journal.pgen.1003926

Editor: Greg Gibson, Georgia Institute of Technology, United States of America

Received: April 23, 2013; **Accepted:** September 13, 2013; **Published:** November 21, 2013

This is an open-access article, free of all copyright, and may be freely reproduced, distributed, transmitted, modified, built upon, or otherwise used by anyone for any lawful purpose. The work is made available under the Creative Commons CC0 public domain dedication.

Funding: This investigation was supported (in part) by a Postdoctoral Fellowship from the National Multiple Sclerosis Society to NAP, and by R01NS049477, R01NS026799, NIH/NINDS R01NS049510, R01NS0495103, NIH/NIAID R01AI076544, Dutch MS Research foundation, Bibbi and Niels Jensens Foundation, The Swedish Brain Foundation and Swedish research council, Stockholm County Council (562183), Swedish Council for Working life and Social Research, Knut and Alice Wallenbergs foundation, MS research Australia (MSRA), John T. Reid Charitable Trusts, Trish MS Research Foundation and the Australian Research Council, under the Linkage Projects Scheme (LP0776744), the Cambridge NIHR Biomedical Research Centre. This project has been funded in whole or in part with federal funds from the Frederick National Laboratory for Cancer Research, under Contract No. HHSN261200800001E. The content of this publication does not necessarily reflect the views or policies of the Department of Health and Human Services, nor does mention of trade names, commercial products, or organizations imply endorsement by the U.S. Government. This Research was supported in part by the Intramural Research Program of the NIH, Frederick National Lab, Center for Cancer Research. PLDJ is a Harry Weaver neuroscience scholar of the National MS Society (JF2138A1). PIWdB is the recipient of a VIDJ Award from the Netherlands Organization for Scientific Research (NWO project 016.126.354). The funders had no role in study design, data collection and analysis, decision to publish, or preparation of the manuscript.

Competing Interests: The authors have declared that no competing interests exist.

* E-mail: pdejager@rics.bwh.harvard.edu (PLDJ); pdebakker@umcutrecht.nl (PIWdB)

¶ These authors contributed equally to this work.

¶ Membership of IMSGC and ANZgene is provided in the Acknowledgments.

Author Summary

Multiple sclerosis (MS) is an inflammatory and neurodegenerative disease with a heritable component. Although it has been known for a long time that the strongest MS risk factor maps to the major histocompatibility complex (MHC) on chromosome 6, there are still many unresolved questions as to the identity and the nature of the risk variants within the MHC. Because the MHC has a complex structure, systematic investigation across this region has been challenging. In this study, we used state-of-the-art imputation methods coupled to statistical regression to query variants in the human leukocyte antigen (HLA) class I and II genes for a role in MS risk. Starting from available SNP genotype data, we replicated the strongest risk factor, the *HLA-DRB1*15:01* allele, and were able to identify 11 independent effects in total. Functional studies are now needed to understand their mechanism in MS etiology.

Introduction

Across the entire human genome, the major histocompatibility complex (MHC) on chromosome 6 makes the single largest contribution to multiple sclerosis (MS) susceptibility. The classical *HLA-DRB1*15:01* allele has been documented as the strongest association to MS risk, and its role has been studied and replicated extensively [1]. Numerous other HLA alleles have been suggested to be associated with MS susceptibility, but the complex structure of the MHC has made it challenging to unequivocally pinpoint variants that play a causal role in MS [1,2]. For example, it has been suggested that *DQB1*06:02*, an MHC class II allele in strong linkage disequilibrium (LD) with *DRB1*15:01*, either has no independent effect [3] or acts in an extended haplotype with *DRB1*15:01*, the *DRB1*15:01—DQB1*06:02* haplotype, or the *DRB1*15:01—DQA1*01:02—DQB1*06:02* haplotype [4,5]. The ambiguity and the lack of replication for many of the MHC associations can be attributed to the extended LD structure of the MHC [6], the limited number of HLA loci analyzed, and the relatively small sample size of previous studies.

Thanks to a large sample size and a novel procedure to impute classical HLA alleles from SNP data, a recent study described independent MHC effects for *DRB1*15:01*, **03:01* and **13:03* as well as *HLA-A*02:01* and rs9277535 [7]. In the present study we sought to test not only the role of classical HLA alleles but also of

potentially functional variation within the HLA genes. To this end, we imputed classical alleles as well as their corresponding amino acid sequences in 8 HLA genes in a large population of 5,091 MS cases and 9,595 healthy controls, with genome-wide data (GWAS), following a recently described imputation protocol [8]. Both the samples and the imputation method used were independent of recent efforts exploring MHC associations to MS susceptibility [7].

Results

We have successfully imputed 3,613 SNPs, 202 amino acid positions, 78 classical HLA alleles at two-digit resolution, and 99 classical HLA alleles at four-digit resolution (Figure S1). Given the number of hypotheses that are tested in this analysis, we set, *a priori*, $p < 1 \times 10^{-5}$ as the threshold for statistical significance. This threshold accounts for 5,000 independent tests, assuming a study-wide type 1 error rate (α) of 5%. Overall, we analyzed 5,091 MS cases and 9,595 healthy controls from eight different GWAS data sets (Table 1).

Multi-allelic nature of association at HLA-DRB1

The most statistically significant variant in the univariate analysis (see Material and Methods for details) was *HLA-DRB1*15:01* (odds ratio [OR] = 2.92, $p = 1.4 \times 10^{-234}$, Figure 1A). Looking at each category of variants (SNPs, two-digit HLA alleles, four-digit HLA alleles and amino acid positions), the amino acid position with the smallest p-value was position -5 in the leader peptide of *DQB1* ($p = 7.6 \times 10^{-231}$), and the most statistically significant SNP was at position 32,742,280 (OR for the A allele = 2.96, $p = 5.1 \times 10^{-229}$). An equivalent effect was observed for *HLA-DQB1*06:02* (OR = 2.96, $p = 5.4 \times 10^{-229}$). We first tested whether the *DRB1*15:01* effect could be explained by *DQB1*. Adjusting for *DQB1* variants, we observed that *DRB1*15:01* always had a residual effect ($p < 10^{-6}$). Conversely, adjusting for *DRB1*15:01*, the effect of *DQB1* variants were accounted for ($p > 0.8$), suggesting that *DRB1*15:01* had a non-equivalent and more statistically significant effect than the *DQB1* variants. Furthermore, the extended *DRB1*15:01—DQB1*06:02* haplotype ($p = 7.5 \times 10^{-231}$) did not improve upon the association of *DRB1*15:01* alone. Similarly, the classical *DQA1*01:02* allele—that was suggested to contribute to the effect of the haplotype—was strongly associated ($p = 4.8 \times 10^{-178}$), but its effect could be entirely explained by *DRB1*15:01*. These observations strengthen the hypothesis that the primary MHC effect in MS is mediated by *DRB1*15:01* and not by variants in the *DQB1* or *DQA1* loci.

The *DRB1* locus (all four-digit alleles in one model) had a p-value of 4.0×10^{-263} in the initial analysis (Figure 1B). After adjusting for *DRB1*15:01*, the residual *DRB1* locus effect (due to all remaining *DRB1* four-digit alleles) was still statistically significant ($p = 3.1 \times 10^{-37}$), indicating the presence of multiple independent *DRB1* effects. Applying a forward stepwise strategy (see Materials and Methods for details), we established statistical independence for 5 additional *DRB1* alleles: **03:01*, **13:03*, **04:04*, **04:01*, and **14:01* (Table S1). After controlling for the effects of all 6 significant *DRB1* alleles (including **15:01*), there was no evidence for a residual signal ($p = 1.5 \times 10^{-05}$). We also applied several other variant selection approaches to test the robustness of these findings; all approaches identified the same six alleles (Table S1).

HLA-A*02:01 has an independent protective effect

Having analyzed the effects at *HLA-DRB1*, we tested all other variation across the MHC while correcting for the six statistically independent *DRB1* alleles, namely *DRB1*15:01*, *DRB1*03:01*,

Table 1. Descriptive characteristic of analyzed data sets.

GWAS	Cases	Controls	%males	Genomic inflation factor
GeneMSA DU	219	225	39%	1.020
GeneMSA US	437	402	32%	1.021
GeneMSA SW	239	190	30%	1.018
IMSGC	790	1677	43%	1.030
BWH	821	2705	51%	1.058
ANZgene	1582	1949	33%	1.054
Rotterdam	459	1938	41%	1.030
Kaiser Permanente	544	513	19%	1.003

IMSGC: International Multiple Sclerosis Genetics Consortium; BWH: Brigham & Women's Hospital; ANZ: Australia and New Zealand genetic study; DU: Netherlands; US: United States; SW: Switzerland.
doi:10.1371/journal.pgen.1003926.t001

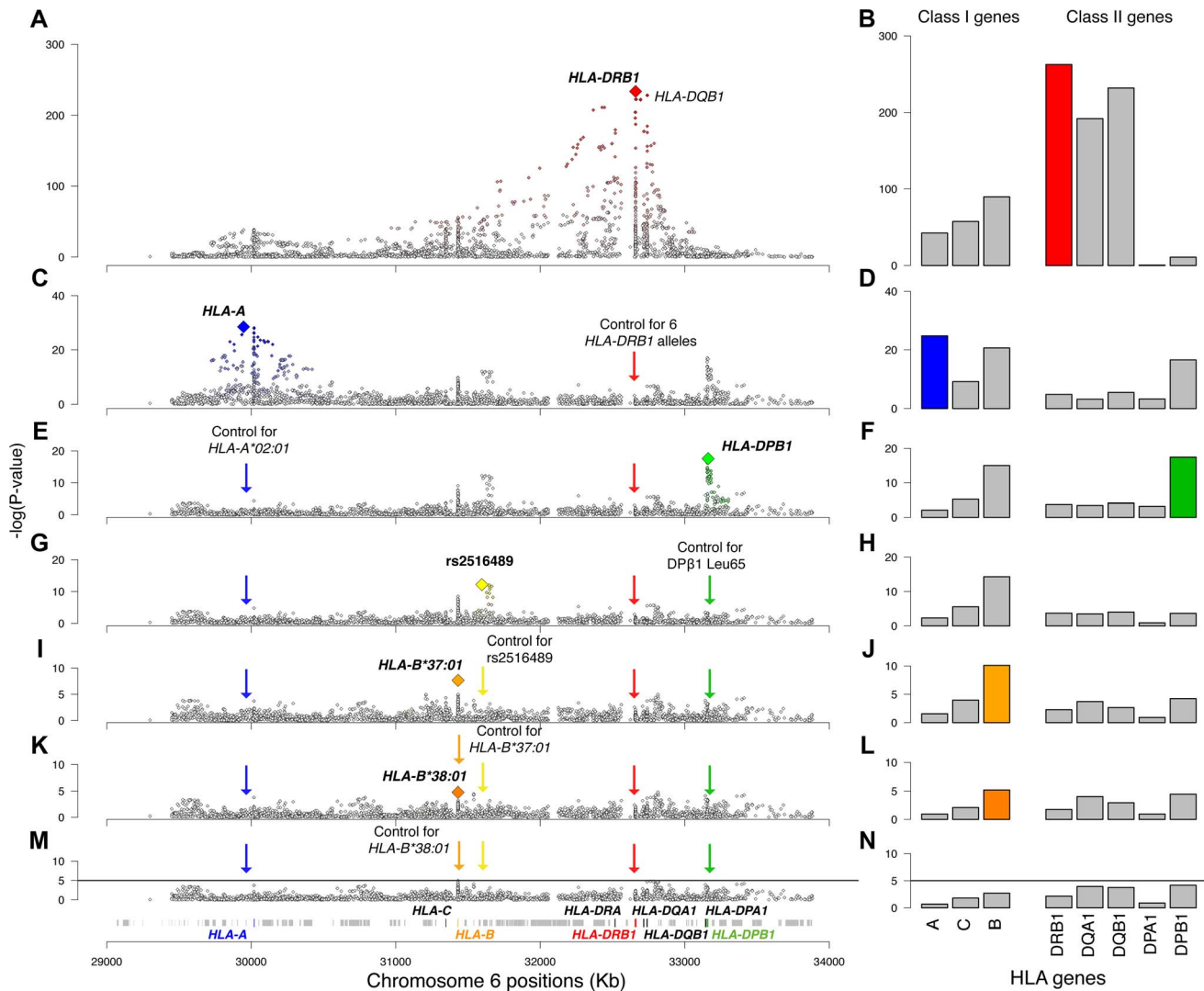


Figure 1. Association plots for the analyzed variants and HLA genes. Panels on the left are regional association plots for all variants in the MHC region; each diamond is a polymorphism evaluated in the analysis (SNP, HLA type, amino acid). The index variant that best captures the effect of each locus is highlighted with a larger diamond. Variants that are in LD with the index variant are colored, with the intensity of the color being proportional to the extent of LD. The panels on the right plot the $-\log_{10}(p\text{-value})$ of the eight analyzed HLA genes. The order of the genes is based on their position on chromosome 6. The rows represent univariate analysis (A, B), conditioning on six *HLA-DRB1* alleles (**15:01*, **03:01*, **13:03*, **04:04*, **04:01*, and **14:01*) (C, D), conditioning on the above and *HLA-A*02:01* (E, F), conditioning on the above and the *DPB1* effect (G, H), conditioning on the above and rs2516489 (I, J), conditioning on the above and *B*37:01* (K, L), conditioning on the above and *B*38:01* (M, N). In panels M and N the solid black line marks the threshold of statistical significance in the study. doi:10.1371/journal.pgen.1003926.g001

*DRB1*13:03*, *DRB1*04:04*, *DRB1*04:01*, and *DRB1*14:01*. The most statistically significant variant was SNP rs2844821 near *HLA-A* (OR for G allele = 0.70, $p = 3.2 \times 10^{-29}$, Figure 1C). Due to LD, this SNP effect is statistically equivalent to the effect of *HLA-A*02:01* (OR = 0.70, $p = 7.4 \times 10^{-29}$) and amino acid Val at position 95 in the peptide-binding groove of the *HLA-A* protein (OR = 0.70, $p = 9.6 \times 10^{-29}$, Figure 2). Controlling for this effect, there were no other *HLA-A* associations.

The DPB1 association with MS susceptibility

Controlling for the 6 *DRB1* alleles and the *HLA-A* effect, the next most statistically significant variant was SNP rs9277489 (OR for C = 1.31, $p = 2.6 \times 10^{-18}$). This SNP is in the intronic region of *HLA-DPB1* gene and in perfect LD ($r^2 = 1$, based on HapMap Phase II) with rs9277535 that was previously associated with MS

susceptibility [7,9]. The most statistically significant HLA allele was *DPB1*03:01* ($p = 3.6 \times 10^{-15}$), but the effect of rs9277489 cannot be explained by *DPB1*03:01* alone ($p = 1.7 \times 10^{-06}$ for rs9277489 in the presence of *DPB1*03:01*). The most statistically significant amino acid mapped to position 65 of *HLA-DPB1* (OR for Leu vs. Ile = 1.37, $p = 3.7 \times 10^{-18}$), which explained the effect of rs9277489 ($p = 0.003$ for rs9277489 in the presence of Leu65 in *HLA-DPB1*). This amino acid is also located in the peptide-binding groove of *HLA-DPB1* (Figure 2). After controlling for rs9277489, there was no residual effect at the *DPB1* locus ($p > 1.0 \times 10^{-5}$).

A non-classical MHC association in MICB-LST1

Adjusting also for the *DPB1* effect, we identified rs2516489 as the next most statistically significant variant (OR for T = 1.31,

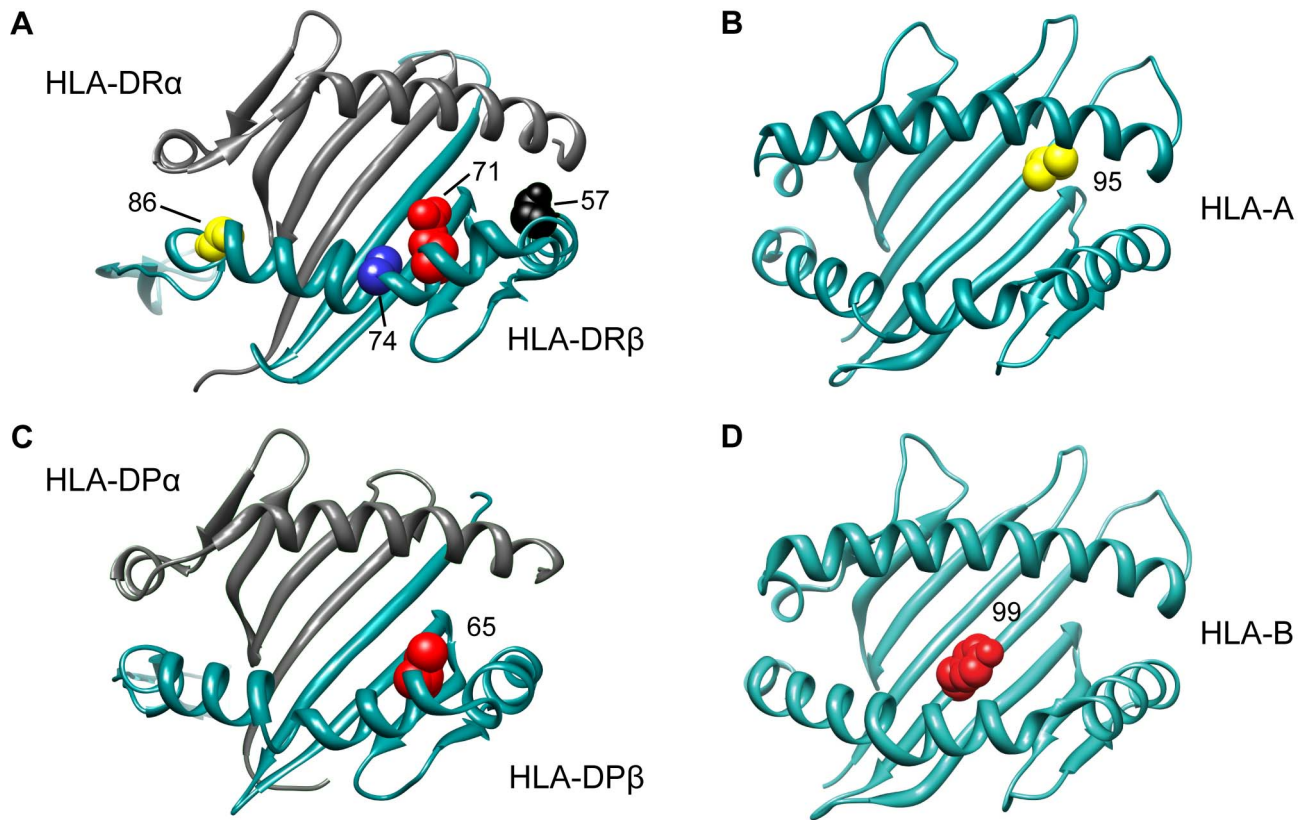


Figure 2. 3D ribbon models for HLA DR, HLA A, HLA DP and HLA B. All structures are positioned to accommodate the view of the peptide-binding groove and the associated amino acid residues. The Protein Data Bank entries 3pdo, 1a1m, 3lqz, and 2bvp were used to produce the 3D structures, respectively, using UCSF Chimera [49].
doi:10.1371/journal.pgen.1003926.g002

$p = 6.7 \times 10^{-13}$, Figure 1G, Figure S2B). This SNP tags a region of extended LD containing several non-classical MHC class I, class III and cytokine genes, i.e. *MICB*, *DDX39B* (*BAT1*), *NFKBIL1*, *TNF*, *LTA*, *LTB*, and *LST1* (Figure 3). We note that this region had no substantial effect in the univariate analysis (Figure 1A, Figure S2A), but it became genome-wide significant once the *DRB1*15:01* effect was accounted for (Table S2). There was no evidence of interaction either with *DRB1*1501* (Table S2) or any other of the identified effects. To explore this phenomenon further, we stratified the samples according to the presence of *DRB1*15:01* into carriers (heterozygous and homozygous) and non-carriers. Univariate analysis in these two strata revealed a consistent but modest effect (OR ~ 1.2) for the associated SNP in both *DRB1*15:01* carriers and non-carriers (Table S2, Figure S3). This phenomenon can likely be explained by Simpson's paradox, where two subgroups share the same association but the overall population shows no association (or even a reversed one) [10]. This analysis therefore returns, for the first time, robust evidence supporting the role of non-HLA genes within the MHC.

To explore any functional consequences of the SNPs in the *MICB-LST1* region we tested these SNPs for *cis*-eQTL (expression quantitative trait loci) effects in peripheral blood mononuclear cells (PBMCs) of 213 MS subjects [11] as well as CD4+ T cells and CD14+ monocytes of 211 healthy controls (Table S3). None of the associated SNPs had a strong *cis*-eQTL effect ($p > 1 \times 10^{-5}$); the strongest effect in this region is the relation of rs2516489 to *LST1* expression ($p = 1.91 \times 10^{-5}$) in the CD4+ T cells of healthy individuals. The next strongest effect also involved rs2516489 but was seen in relation to *HCG18* ($p = 3.19 \times 10^{-5}$) in the PBMCs of

MS subjects. None of the SNPs had a statistically significant *cis*-eQTL effect on any of the class I or II classical HLA genes (Table S3). Leveraging the publicly available Encyclopedia of DNA Elements (ENCODE) [12] and NIH Epigenomics Roadmap [13] for immune cells and cell lines it is evident that the region has an abundance of functional elements (Figure 3). Of specific interest is the non-coding naturally occurring read-through transcription between the neighboring *ATP6V1G2* (ATPase, H+ transporting, lysosomal 13 kDa, V1 subunit G2) and *DDX39B* (DEAD box polypeptide 39B) genes. Two SNPs, rs2523512 and rs2251824, tag this element that has a strong signal in the DNase hypersensitivity assay in all immune cell types, suggesting that it is an active *cis*-regulatory region. The histone markers for promoters, enhancers and active elongation also support these data, while this region is identified as an active transcription start site using chromatin states [14]. Other candidates are the *TNF* and *LTB* genes. Rs2516489, the SNP with the best (but not statistically significant) *cis*-eQTL effects, lies within a region of heterochromatin, with no indication of regulatory potential in the available data.

Independent HLA-B effects

Adjusting for 6 classical *DRB1* alleles, *HLA-A*02:01*, rs9277489 (*HLA-DPB1* effect) and rs2516489, we observed another novel signal emerging from the *HLA-B* locus ($p = 7.9 \times 10^{-11}$). The most statistically significant variants were *HLA-B*37*, *HLA-B*37:01*, amino acid Ser at position 99 in HLA-B (Figure 2) and a SNP in position 31,431,006 (hg18) (Figure 1I, J). All of these variants had statistically equivalent effects (OR = 1.75, $p = 2.2 \times 10^{-08}$). Accounting for the effect of *HLA-B*37:01*, no other variant in *HLA-B* exceeded our *a*

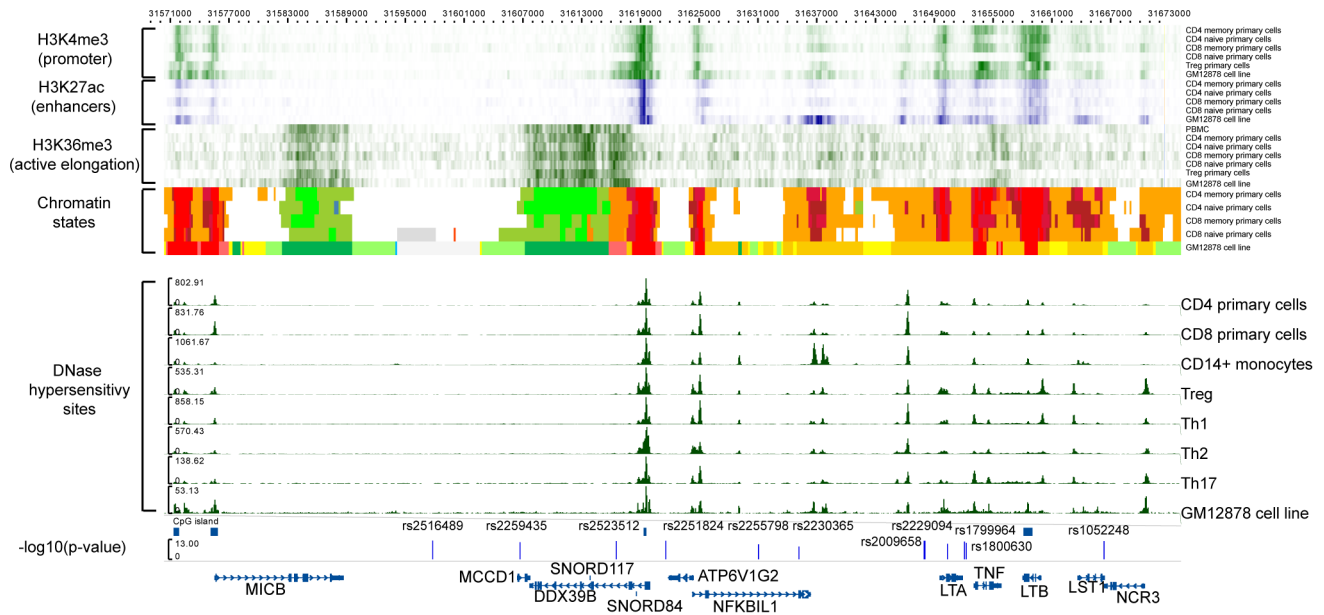


Figure 3. Functional annotation of the *MICB-LST1*. The first 6 rows are H3K4me3 (green) data for CD4 memory primary cells, CD4 naïve primary cells, CD8 memory primary cells, CD8 naïve primary cells, Treg primary cells, and GM12878 cell line (B-lymphocyte, lymphoblastoid, International HapMap Project - CEPH/Utah - European Caucasian, Epstein-Barr Virus). The next 5 rows display H3K27ac (blue) data for CD4 memory primary cells, CD4 naïve primary cells, CD8 memory primary cells, CD8 naïve primary cells, Treg primary cells, and GM12878 cell line. The chromatin states displayed are for CD4 memory primary cells, CD4 naïve primary cells, CD8 memory primary cells, CD8 naïve primary cells, Treg primary cells, and GM12878 cell line. The DNase hypersensitivity sites are for CD4 primary cells, CD8 primary cells, CD14+ monocytes, Treg, Th1, Th2, Th17 and GM12878 cell line, respectively. The detailed colorscheme of the chromatin states is listed in the Supplementary material. Briefly, red corresponds to transcription start sites (TSSs) and/or active promoters, orange/yellow to enhancers, green to transcription, and white/grey to heterochromatin. All data are publicly available data from ENCODE and NIH Roadmap. The last row displays the $-\log_{10}(p)$ of the SNPs in the LD block after adjustment with the *HLA-DRB1*15:01* effect. doi:10.1371/journal.pgen.1003926.g003

priori defined threshold, although the residual effect at the *HLA-B* locus due to all remaining classical *HLA-B* alleles was still statistically significant in our analysis ($p = 6.5 \times 10^{-6}$, Figure 1L). This residual association could be accounted for by *HLA-B*38:01* (OR = 0.55; $p = 4.1 \times 10^{-5}$). After adding *HLA-B*38:01* to the model, there was no longer evidence for a residual effect of classical *HLA-B* alleles ($p > 0.002$) or elsewhere across the MHC. No amino acid position in HLA-B could explain the *HLA-B*38:01* effect.

Amino acid residues in DRβ1

Next, we set out to assess whether a specific set of amino acids within the HLA-DR molecule could explain the collective effect of the six classical *DRB1* alleles identified above. To this end, we tested each polymorphic amino acid position using an omnibus test (a regression model with all but one amino acids carried by a given position), adding all amino acids (but one) of the most statistically significant position to the model in a forward stepwise fashion. The most significant amino acid position in DRβ1 mapped to position 71 ($p = 1.2 \times 10^{-227}$, Figure S4A), which carries 4 possible alleles: Ala, Arg, Glu, and Lys. Controlling for the alleles at position 71 ($df = 3$), there was still a strong residual signal for *DRB1*15:01* ($p = 5.8 \times 10^{-13}$), indicating that amino acid position 71 alone does not explain the *DRB1*15:01* effect. Adjusting for the alleles at position 71, position 74 was the next most statistically significant ($p = 1.2 \times 10^{-16}$, Figure S4B). This position harbors five possible alleles: Arg, Leu, Glu, Ala and Gln. Controlling for positions 71 and 74, position 57 (with four alleles: Asp, Ser, Val or Ala) was the next most statistically significant association ($p = 4.9 \times 10^{-11}$, Figure S4C). Controlling for positions 71, 74 and 57, we found position

86 as the most statistically significant association (OR = 1.35 for Val vs. Gly, $p = 1.0 \times 10^{-6}$, Figure S4D). After controlling for these four positions, no other amino acid position exceeded our significance threshold (Figure S4E), although *HLA-DRB1*15:01* still showed a residual association signal ($p = 10^{-5}$). The model with the four DRβ1 amino acid positions could explain the data better than a model with only *DRB1*15:01* ($p = 2.6 \times 10^{-26}$ in favor of the DRβ1 amino acid positions), but it was slightly worse than the model with the six *DRB1* alleles ($p = 0.001$ in favor of the 6 *DRB1* alleles). All four amino acid positions reside in the peptide-binding groove of the HLA-DR molecule (Figure 2; Table S4 lists the correspondence between the amino acids at these positions and the six associated classical *DRB1* alleles).

Variance explained

Integrating all of the results, *HLA-DRB1*15:01* accounted for 10% of the phenotypic variance in the data, whereas all 6 independent *HLA-DRB1* alleles explained 11.6%. A model with all identified statistically independent effects (*HLA-DRB1*15:01*, *HLA-DRB1*03:01*, *HLA-DRB1*13:03*, *HLA-DRB1*04:04*, *HLA-DRB1*04:01*, *HLA-DRB1*14:01*, *HLA-A*02:01*, rs9277489/Leu65 in HLA-DPβ1, rs2516489, *HLA-B*37:01*, and *HLA-B*38:01*) accounted for 14.2% of the total variance in MS susceptibility.

Discussion

We have imputed classical alleles of HLA genes, their corresponding amino acids and SNPs across the MHC, and tested all variants for association in a large case-control collection.

Our analysis corroborates the effects of *DRB1* alleles other than the well-known *DRB1*15:01* association. Classical alleles *DRB1*03:01*, **13:03*, **04:04*, **04:01*, and **14:01* display robust, independent associations in our data. The *DQB1* and *DQ41* genes have been suggested to form extended haplotypes with *DRB1* alleles, mostly **15:01* [4]. In our hands, the effect of *DQB1*06:02* does not explain the effect of *DRB1*15:01*. Furthermore, the *DRB1*15:01—DQB1*06:02* haplotype does not appear to explain the data as well as the effect of *DRB1*15:01* alone. Based on these results, *DRB1*15:01* and the remaining *DRB1* alleles are better candidates than *DQB1* variants for a causal role in MS susceptibility, a hypothesis that agrees with the MHC analysis of MS subjects with African origin [3]. We note that this interpretation counters evidence in favor of *DQB1* from certain murine models that capture elements of human inflammatory demyelination by triggering experimental autoimmune encephalomyelitis induced with myelin-associated oligodendrocytic basic protein [15] or proteolipid protein [16].

A number of studies have highlighted the importance of class I HLA alleles in MS susceptibility, with *HLA-A*02:01* being the most prominent allele [17–20]. Here, we replicated the *HLA-A*02:01* association and attributed it to an amino acid polymorphism at position 95 in the peptide-binding groove of the HLA-A molecule. We also replicated the recently proposed *DPB1*03:01* association, and identified a more statistically significant effect at amino acid position 65 in the peptide binding groove of HLA-DPB1 [7,9]. Although our study has overlapping samples with the first study to identify an independent *HLA-DPB1* effect [9], these account for only 24% of the present sample set. The evidence of an *HLA-DPB1* effect is strengthened by the fact that the second study reporting such a signal [7] has no overlapping samples with our study. Furthermore, we confirmed the presence of statistically independent *HLA-B* effects [21,22]. Our analysis fine-mapped these to *B*37:01* and *B*38:01*. Of these, *B*37:01* can be explained by amino acid Ser99 of the HLA-B protein, which is also in this molecule's peptide-binding groove. The *HLA-C* locus demonstrated no convincing evidence for a statistically independent effect, suggesting that previous results may have tagged untested *HLA-A* or *HLA-B* effects across the class I region [23]. Although some of the above associations could be explained by specific amino acid polymorphisms in the corresponding HLA proteins, the picture at *HLA-DRB1* however appears to be more complex as there was no single model based on amino acids that could explain the entire locus effect (including the specific effect due to *DRB1*15:01*). At this stage, our conservative interpretation of these results is that the implicated amino acids allow new hypotheses to be formulated for future functional studies.

An interesting finding in our analysis was the association of the region spanning from *MICB* to *LST1*, which contains several important class I, class III and cytokine-related genes. Although the identified SNPs were not significant in the initial (univariate) analysis, we established that these reached significance after adjusting for the strong *DRB1*15:01* effect. One small study previously examined *MICB* along with *DRB1*15* and had found evidence for an independent association [24]. Another study reported that variation in *TNF* can modify the effect of *DRB1*15:01* [25]. We did not obtain evidence for statistical interaction between this locus and the other MHC variants, indicating that the MHC susceptibility variants we have catalogued likely act independently and additively in terms of MS susceptibility. Overall, we offer robust evidence for the role of a specific MS susceptibility haplotype in this region of the MHC. This region harbors evidence for association with several other diseases, e.g. Crohn's disease and ulcerative colitis [26], rheumatoid arthritis

[27], Sjogren's syndrome [28], and hepatitis C virus-associated dilated cardiomyopathy [29]. However, the identity of the causal gene(s) within this associated region remains unclear at this time, but it is intriguing that three of the genes (*TNF*, *LTA* and *LTB*) are ligands for one of the validated MS susceptibility genes, *TNFRSF1A* [30]. We did not observe any evidence of statistical interaction ($p > 0.5$) with this non-MHC locus in our data. Our preliminary analysis using *cis*-eQTL data in healthy individuals and MS subjects as well as the publicly available genomic data from the ENCODE and NIH Epigenomics Roadmap did not identify a single variant/gene as the likely causal one. From this information it seems that several genes have functional potential, but more detailed functional studies will be needed to unravel the causal variants and genes.

Leveraging genome-wide genotype data, the collection of analyses presented here provides a well-powered investigation of thousands of genotyped and imputed SNPs, classical alleles of 8 class I and II HLA genes and amino acid sequence variation of these HLA proteins. The combination of the large sample size with additional variation types allowed us to present an enhanced dissection of the critical role of the MHC in MS susceptibility. Our results highlight a possible role for certain residues in the peptide-binding groove of HLA molecules associated with peptide antigen recognition. In HLA-DR β 1 we identified a set of four amino acids in positions 71, 74, 57 and 86 that capture most (but not all) of the *DRB1* association. Of these, Val86 has been associated previously with MS [31–33], and this residue appears to be important for the presentation of peptides from a putative target antigen in MS, myelin basic protein [34], and for the stability of the DR $\alpha\beta$ dimer [35]. Another study suggested an association at position 60 [36] and another one at position 13 [37], although these were not replicated in the present study. Interestingly, the HLA-DR β 1 amino acids in positions 71 and 74 were recently also associated with susceptibility to rheumatoid arthritis [38]. Overall, consistent with the known biology of MS, it appears that disease-associated variants in *HLA-DRB1* primarily influence the structural characteristics of the peptide-binding groove and presumably lead to alterations of the T cell repertoire that enhance the likelihood of an inflammatory demyelinating process. However, the MHC also harbors at least one other risk allele that does not directly affect an antigen-presenting molecule: the robust evidence supporting a risk haplotype in the vicinity of *MICB* will have a different mechanism, one that is likely to affect the function of one or perhaps several cytokines.

This study displays an effective strategy for in-depth characterization of this complex region of the human genome. Increasing study sample sizes and more complete reference panels are likely to continue to provide a more detailed perspective on the architecture of genetic susceptibility in this region. The identified amino acid residues may help prioritize the identification of binding peptides and investigations of other potential roles that these susceptibility alleles might have in the biology of MS susceptibility aside from antigen presentation.

Materials and Methods

Samples

We used data from 8 genome-wide association studies (GWAS) of European ancestry (Table 1): (a) three GWAS of the GeneMSA [30,39] with samples from the Netherlands (GeneMSA DU), Switzerland (GeneMSA SW), and the United States (GeneMSA US); (b) an early GWAS from the IMSGC [30,39,40] with samples from the United States (ISMGIC US) and the United Kingdom (ISMGIC UK), that was collapsed in one stratum removing the UK cases; (c) a GWAS with cases from the Brigham and Women's

Hospital and controls from the MIGEN study (BWH) [30,39]; (d) the Australia and New Zealand Multiple Sclerosis Genetics Consortium (ANZgene) [41]; (e) an unpublished GWAS set from Erasmus Medical Center in Rotterdam, the Netherlands; and (f) an unpublished GWAS collection from the Kaiser Permanente MS Research Program (Kaiser Permanente). All the above GWAS data sets were filtered with the same quality control criteria as part of an ongoing meta-analysis of Multiple Sclerosis GWAS. In each of these data sets we performed principal components analysis (PCA) to identify population outliers and to calculate covariates to control for population stratification between cases and controls.

Imputation of classical HLA type I and II alleles and respective amino acid sequences

From each GWAS we extracted SNPs within the extended MHC region (chr6:29,299,390 to 33,883,424; hg18) to impute classical alleles for class I HLA genes (*HLA-A*, *HLA-B*, and *HLA-C*) and class II HLA genes (*HLA-DPA1*, *HLA-DPB1*, *HLA-DQA1*, *HLA-DQB1*, and *HLA-DRB1*), their corresponding amino acid sequences and SNPs not captured in the genotypic platforms used. The imputation was performed with the software BEAGLE [42] using a collection of 2,767 individuals of the Type 1 Diabetes Genetics Consortium (T1DGC) with 4-digit classical allele genotyping for the above HLA genes as the reference panel. This method and reference panel have been used for fine-mapping MHC associations in HIV control [8] and seropositive rheumatoid arthritis [38]. Cases and controls from each GWAS dataset were imputed together. All variants in the reference panel were coded as biallelic markers (presence vs. absence), allowing us to use BEAGLE for the imputation. Post-imputation we excluded variants with minor allele frequency less than 1% from the analysis. Table S5 lists the imputation quality for the identified variants.

Statistical analysis

We analyzed each variant using a logistic regression model, assuming alleles have an additive effect on the log-odds scale. We also assumed the genetic effects were fixed across all eight GWAS. In each model we included the top 5 principal components to control for within-GWAS population stratification and 7 dummy variables to account for between-GWAS specific effects. Throughout the text we refer to such a model as *univariate* (M_u), even if several covariates were included in the model, reflecting the fact that only one MHC-specific variant is included in the model. This is the representation of the univariate model:

$$y = \beta_{0,i} + \sum_{j=1}^{p-1} \beta_{i,j} x_{i,j} + \sum_{l=1}^5 \beta_{l,i} x_l + \sum_{k=1}^{n-1} \beta_{k,i} x_k \quad (1)$$

M_u , Univariate logistic regression model

where y is the log(odds) for the case-control status, β_0 is the logistic regression intercept and $\beta_{i,j}$ is the log-additive effect for the allele j of the variant i with p alleles. In this paper, the term variant is used for any type of SNP (biallelic, triallelic, etc), two-digit HLA allele, four-digit HLA allele and amino acid position. In any case we included $p-1$ alleles, with the one excluded being the reference allele. Where possible we tried to select the most frequent variant in the controls as the reference allele. The five included principal components are represented in the model as l and the last block in the model represents the dummy variables included for the n studies ($n-1$ parameters added in the model).

To calculate an omnibus p-value for the variant, regardless of the number of alleles included in the univariate model, we used

using a log-likelihood ratio test (2) comparing the likelihood L_0 of the null model (3) against the likelihood L_l of the fitted model:

$$D = -2 \ln \frac{L_0}{L_l}, D \sim \chi^2(k) \quad (2)$$

Log-likelihood ratio test

where D is the log-likelihood test value, also known as deviance. D follows an approximate chi-square distribution with k degrees of freedom, where k is the difference of the regressed parameters between the two models. Representation of the null model:

$$y = \beta_{0,i} + \sum_{l=1}^5 \beta_{l,i} x_l + \sum_{k=1}^{n-1} \beta_{k,i} x_k \quad (3)$$

M_0 , Null logistic regression model

Besides testing variants for association, i.e. SNPs, HLA alleles and amino acids, we also fitted models that estimated the overall effect of each of the eight HLA genes. We did so, by fitting all respective four-digit alleles of a given HLA gene in the same model. The respective p-values reflect the overall significance of the gene.

Framework for identification of statistically independent effects

In order to identify the statistically independent effects, we first tested all variants under a univariate logistic regression model and ranked them based on the p-value of the log-likelihood test. Next, in a forward stepwise fashion, we included in the logistic regression model the most statistically significant variant as a covariate, analyzed all remaining variants and ranked them based on the new p-value of the respective log-likelihood test. The models that included at least one variant as covariate are referred to as *conditional* throughout the text. In each iteration the null model used in the log-likelihood test was the original null model (3) with the variants that were used as covariates. We repeated the same steps until no variant or no HLA gene reached the level of statistical significance, which we *a priori* set to be 10^{-5} . This statistical significance threshold accounts of 5,000 independent tests using Bonferroni correction. Although most of the variants analyzed are correlated, we chose this threshold to account also for the multiple stepwise fitted models. If no variant reached the level of significance but an HLA gene did, we kept adding variants in the overall model until the HLA gene p-value was larger than 10^{-5} .

To compare the effects of two (or more variants), e.g. A and B, we fitted the following models: M_A model with variant A, M_B model with variant B, and M_{AB} model with both variants A and B. All three models included the same other covariates. Then we used the log-likelihood test to compare M_{AB} vs. M_B and M_{AB} vs. M_A . These two comparisons represent the effects of variants A and B, respectively, in the presence of the other variant, i.e. B and A. For these comparisons we used the nominal ($\alpha = 0.05$) level of statistical significance.

Statistically independent effects in the DRB1 locus

After adjusting for the most statistically significant variant, *DRB1*15:01*, the residual effect of the DRB1 locus, i.e. the effect of all alleles besides **15:01*, was still the most statistically significant of any of the remaining variants. This led us to the hypothesis that several other DRB1 alleles could explain the overall DRB1 locus effect, already conditioning on *DRB1*15:01*. To identify such effects inside the DRB1 locus, we applied the above forward

stepwise logistic regression approach to the four-digit DRB1 alleles. To test the robustness of the results from the forward stepwise regression, we also applied four other statistical methods for variant selection: i) lasso, [43] ii) elastic net, [44] iii) least angle regression, [45] and iv) forward Stagewise regression. [46] For the lasso and elastic net we selected the largest value of lambda (λ_j) after 10-fold cross-validation, such that error was within 1 standard error of the minimum mean cross-validated error. In the respective results section, we illustrate that all methods reached the same conclusion independently.

DRB1*15:01:DQB1*06:02 extended haplotypes (diplotypes)

It has been proposed that extended *DRB1*15:01-DQB1*06:02* haplotypes confer the risk for MS rather than individual HLA alleles. To test this hypothesis, we used the post-imputation phased data to estimate the *DRB1*15:01-DQB1*06:02* diplotypes. Then we fitted a logistic regression that estimated the effect of the diplotype under a per-allelic model. Since this approach used phased data, rather than post-imputation probabilities, the imputation uncertainty is not properly accounted for. Thus, we expect the respective p-values to be slightly inflated.

Functional analysis of the MICB-LST1 region

To investigate the functional potential of the *MICB-LST1* region we queried:

- in-house cis-eQTL (expression quantitative trait loci) in PBMCs of 213 MS subjects [11] and CD4+ T cells and CD14+ monocytes of 211 healthy individuals. The PBMCs gene expression levels were quantified with mRNA derived from of 213 subjects of European ancestry with relapsing remitting (RR) multiple sclerosis (MS) via an Affymetrix Human Genome U133 Plus 2.0 Array. The expression levels were adjusted for confounding factors, such as subject's use of immunomodulatory drugs, age, gender, and batch effects via principle components analysis. Associations between SNP genotypes and adjusted expression residual traits were conducted by Spearman rank correlation (SRC). For the *cis* analysis, we considered only SNPs within a 2 Mbps window from the transcript start site (TSS) of genes. Furthermore, we also explored any possible effect to the expression of class I and II HLA classical genes, regardless of their physical distance. Significance of the nominal p-values was determined by comparing the distribution of the most significant p values generated by permuting expression phenotypes 10,000 times independently for each gene. We call a *cis*-eQTL significant if the nominal association p-value is greater than the 0.05 tail of the minimal p-value distribution resulting from the permuted associations, which corresponds to a p-value of 1×10^{-05} . Similar methods were used to evaluate the *cis*-regulatory effects in CD4+ T lymphocytes and CD14+ monocytes data sets consisting of 211 healthy individuals of European ancestry. These analyses were conducted under the auspices of a protocol approved by the institutional review board of Partners Healthcare.
- publicly available data from the ENOCDE [12] and NIH Epigenomics Roadmap [13]. Specifically we perused data for functional potential from CD4 memory primary cells (H3K4me3, H3K27ac, H3K36me3, chromatin states), CD4 naïve primary cells (H3K4me3, H3K27ac, H3K36me3, chromatin states), CD8 memory primary cells (H3K4me3, H3K27ac, H3K36me3, chromatin states), CD8 naïve primary cells (H3K4me3, H3K27ac, H3K36me3, chromatin

states), CD4 primary cells (DNase hypersensitivity sites), CD8 primary cells (DNase hypersensitivity sites), Treg primary cells (H3K4me3, H3K36me3, DNase hypersensitivity sites), Th1 (DNase hypersensitivity sites), Th2 (DNase hypersensitivity sites), Th17 (DNase hypersensitivity sites) and GM12878 cell line (B-lymphocyte, lymphoblastoid, International HapMap Project - CEPH/Utah - European Caucasian, Epstein-Barr Virus; H3K4me3, H3K27ac, H3K36me3, chromatin states, DNase hypersensitivity sites).

Variance explained

We used Nagelkerke's pseudo-R [47] to estimate the variance explained

$$R^2 = \frac{1 - \left\{ \frac{L_0}{L_1} \right\}^{2/N}}{1 - L_0^{2/N}}, \quad (4)$$

Nagelkerke's pseudo-R²

where L_0 and L_1 are the likelihoods of the null model and fitted model respectively, and N is the number of individuals.

Software

We used PLINK for the initial analysis of the data and to estimate minor allele frequencies and imputation quality metrics, i.e. INFO score. [48] We fitted all models in R using the glm function and package lars and glmnet.

Ethics statement

This investigation has been approved by the Institutional Review Board of Partners Healthcare; the reference number is 2002p000434.

Supporting Information

Figure S1 Scatter plots of minor allele frequency (MAF) and INFO score for the imputed variants. INFO score is an imputation quality metric and is defined as the ratio of the variance observed over the variance expected. On average genotyped SNPs have a value ~ 1 .

(PDF)

Figure S2 Regional associational plots for the non-classical HLA region spanning MICB-LST1. The figure displays the minus logarithmic p-values ($-\log_{10}P$) for the SNPs in the MHC region that includes class I and class III non-classical MHC genes. Panel A has the $-\log_{10}P$ for the univariate analysis, and panel B the $-\log_{10}P$ adjusting for *DRB1*15:01* in the model. Shades of red represent the r^2 between the SNPs and the best marker, i.e. rs2516489.

(PDF)

Figure S3 *DRB1*15:01*-stratified analysis for the SNPs tagging the non-classical HLA LD haplotype. The y-axis lists the SNPs in positional order. The x-axis displays the respective Odds Ratios and 95% confidence intervals of these SNPs while analyzing with a univariate model: a) all individuals [cases: 5,091; controls: 9,595] (black color), b) *DRB1*15:01* carriers [cases: 2,794; controls: 2,392] (green color), and c) non-carriers of *DRB1*15:01* [cases: 2,367; controls: 7,204] (red color). Asterisks indicate associations with a p-value less than 1×10^{-05} .

(PDF)

Figure S4 Analysis of amino acid residues in DRB1. The univariate analysis results are in the first row. Each next one plots the $-\log_{10}(\text{p-value})$ of the amino acid positions conditioning on the amino acid residues if the previous rows. The solid black line marks the threshold of statistical significance in the study. The rows represent univariate analysis (A), conditioning on position 71 (B), conditioning on the above and position 74 (C), conditioning on the above and position 57 (D), conditioning on the above and position 86 (E). (PDF)

Table S1 Statistically independent effects of the DRB1 locus considering four digit resolution alleles. In all cells Odds Ratios are listed. P-values are listed in parentheses for the forward stepwise regression. The order of the DRB1 alleles is according to the forward stepwise regression (primary analysis). The stopping rule was the residual DRB1 locus effect to have a $\text{p-value} > 1.0e^{-05}$. * For the regression-based methods the step number in which the allele was included in the model is displayed. Effect sizes (and p-values) per variants are for the respective step in the forward stepwise regression and for the final model in the least angle and forward stagewise regressions. § For the lasso and elastic net the Odds Ratios are displayed, since both methods provide the best solution. The largest value of l_1 regularization parameter such that error is within 1 standard error of the minimum l_1 regularization parameter was used to identify the best solution. Both the lasso and elastic net also identified *01:01 in their best solution, with OR of 0.99 and 0.97, respectively. This allele comes up in step 7 in all regression methods. (DOC)

Table S2 Proof of statistical independence of rs2516489 and HLA-DRB1*15:01. The interaction term of the two variants cannot explain either of the two effects. Especially in the saturated model (both variants and the interaction term) the interaction term is not statistically significant, even at the nominal level. The stratification of the samples, based on *HLA-DRB1*15:01* carrier status, reveals the effect of rs2516489 in both strata. The numbers listed are the Odds Ratio (OR), followed by the p-value. In all models principal components and dummy variable for studies were used as covariates. (DOC)

Table S3 Cis-eQTL effects ($\text{p-value} < 0.05$) of the SNPs in MICB-LST1 in PBMCs of MS subjects, CD4+ T cells of healthy individuals and CD14+ monocytes of healthy individuals. This table is included

References

- Ramagopalan SV, Knight JC, Ebers GC (2009) Multiple sclerosis and the major histocompatibility complex. *Curr Opin Neurol* 22: 219–225.
- Fernando MM, Stevens CR, Walsh EC, De Jager PL, Goyette P, et al. (2008) Defining the role of the MHC in autoimmunity: a review and pooled analysis. *PLoS Genet* 4: e1000024.
- Oksenberg JR, Barcellos LF, Cree BA, Baranzini SE, Bugawan TL, et al. (2004) Mapping multiple sclerosis susceptibility to the HLA-DR locus in African Americans. *Am J Hum Genet* 74: 160–167.
- Stewart GJ, Teutsch SM, Castle M, Heard RN, Bennetts BH (1997) HLA-DR, -DQA1 and -DQB1 associations in Australian multiple sclerosis patients. *Eur J Immunogenet* 24: 81–92.
- Marrosu MG, Murru MR, Costa G, Murru R, Muntoni F, et al. (1998) DRB1-DQA1-DQB1 loci and multiple sclerosis predisposition in the Sardinian population. *Hum Mol Genet* 7: 1235–1237.
- de Bakker PI, McVean G, Sabeti PC, Miretti MM, Green T, et al. (2006) A high-resolution HLA and SNP haplotype map for disease association studies in the extended human MHC. *Nat Genet* 38: 1166–1172.
- Sawcer S, Hellenthal G, Pirinen M, Spencer CC, Patsopoulos NA, et al. (2011) Genetic risk and a primary role for cell-mediated immune mechanisms in multiple sclerosis. *Nature* 476: 214–219.
- Pereyra F, Jia X, McLaren PJ, Telenti A, de Bakker PI, et al. (2010) The major genetic determinants of HIV-1 control affect HLA class I peptide presentation. *Science* 330: 1551–1557.
- Field J, Browning SR, Johnson LJ, Danoy P, Varney MD, et al. (2010) A polymorphism in the HLA-DPB1 gene is associated with susceptibility to multiple sclerosis. *PLoS One* 5: e13454.
- Simpson EH (1951) The Interpretation of Interaction in Contingency Tables. *J R Stat Soc Series B* 13: 238–241.
- Raj T, Kuchroo M, Replogle JM, Raychaudhuri S, Stranger BE, et al. (2013) Common risk alleles for inflammatory diseases are targets of recent positive selection. *Am J Hum Genet* 92: 517–529.
- Bernstein BE, Bimney E, Dunham I, Green ED, Gunter C, et al. (2012) An integrated encyclopedia of DNA elements in the human genome. *Nature* 489: 57–74.
- Roadmap Epigenomics Project. <http://www.roadmapepigenomics.org>.
- Ernst J, Kellis M (2012) ChromHMM: automating chromatin-state discovery and characterization. *Nat Methods* 9: 215–216.
- Kaushansky N, Altmann DM, Ascough S, David CS, Lassmann H, et al. (2009) HLA-DQB1*0602 determines disease susceptibility in a new “humanized” multiple sclerosis model in HLA-DR15 (DRB1*1501;DQB1*0602) transgenic mice. *J Immunol* 183: 3531–3541.
- Kaushansky N, Altmann DM, David CS, Lassmann H, Ben-Nun A (2012) DQB1*0602 rather than DRB1*1501 confers susceptibility to multiple sclerosis-like disease induced by proteolipid protein (PLP). *J Neuroinflammation* 9: 29.
- Brynedal B, Duvefelt K, Jonasdottir G, Roos IM, Akesson E, et al. (2007) HLA-A confers an HLA-DRB1 independent influence on the risk of multiple sclerosis. *PLoS One* 2: e664.

in the accompanied xls entitled “Supplementary_Table_3.xls”. None of the cis-eQTLs reached statistical significance ($\text{p-value} < 1 \times 10^{-5}$). (XLS)

Table S4 Association of the six identified DRB1 alleles and the amino acid changes in the four associated DRB1 positions. Amino acids that predispose to MS susceptibility are indicated with bold. The rest are either protective or neutral. *DRB1* alleles in bold predispose to MS and the rest are protective. (DOC)

Table S5 Imputation quality scores for the identified variants. (DOC)

Text S1 Supplementary text explaining the chromatin states coloring scheme. (DOC)

Acknowledgments

Members of the International Multiple Sclerosis Genetics Consortium (IMSGC) strategy group:

Lisa Barcellos, Luisa Bernardinelli, David Booth, Manuel Comabella, Alastair Compston, Sandra D’Alfonso, Philip De Jager, Bertrand Fontaine, An Goris, David Hafler, Jonathan Haines, Hanne Harbo, Steve Hauser, Clive Hawkins, Bernhard Hemmer, Rogier Hintzen, Adrian Ivinson, Christina Lill, Roland Martin, Filippo Martinielli-Boneschi, Jorge Oksenberg, Tomas Olsson, Annette Oturai, Aarno Palotie, Margaret Pericak-Vance, Janna Saarela, Stephen Sawcer, Graeme Stewart, Bruce Taylor, Frauke Zipp.

Members of the ANZgene consortium:

Rodney J Scott, Jeannette Lechner-Scott, Pablo Moscato, David R Booth, Graeme J Stewart, Robert N Heard, Deborah Mason, Lyn Griffiths, Simon Broadley, Matthew A Brown, Mark Slee, Simon J Foote, Jim Stankovich, Bruce V Taylor, James Wiley, Melanie Bahlo, Victoria Perreau, Judith Field, Helmut Butzkueven, Trevor J Kilpatrick, Justin Rubio, Mark Marriott, William M Carroll, Allan G Kermod.

Author Contributions

Conceived and designed the experiments: NAP PLDJ PIWdB. Performed the experiments: LFB RQH CS CMvD JAN PAG JO TO BVT SS DAH PLDJ. Analyzed the data: NAP. Contributed reagents/materials/analysis tools: LFB RQH CS CMvD JAN PAG BES TR JO TO BVT SS DAH PLDJ PIWdB. Wrote the paper: NAP MC PLDJ PIWdB. Interpretation of the results: NAP LFB RQH CS CMvD JAN PAG JO TO BVT SS DAH MC PLDJ PIWdB. Revised the manuscript critically for important intellectual content: LFB RQH CS CMvD JAN PAG JO TO BVT SS DAH.

18. Fogdell-Hahn A, Ligiers A, Gronning M, Hillert J, Olerup O (2000) Multiple sclerosis: a modifying influence of HLA class I genes in an HLA class II associated autoimmune disease. *Tissue Antigens* 55: 140–148.
19. Bergamaschi L, Ban M, Barizzone N, Leone M, Ferrante D, et al. (2011) Association of HLA class I markers with multiple sclerosis in the Italian and UK population: evidence of two independent protective effects. *J Med Genet* 48: 485–492.
20. Cree BA, Rioux JD, McCauley JL, Gourraud PA, Goyette P, et al. (2010) A major histocompatibility Class I locus contributes to multiple sclerosis susceptibility independently from HLA-DRB1*15:01. *PLoS One* 5: e11296.
21. Healy BC, Liguori M, Tran D, Chitnis T, Glanz B, et al. (2010) HLA B*44: protective effects in MS susceptibility and MRI outcome measures. *Neurology* 75: 634–640.
22. Rioux JD, Goyette P, Vyse TJ, Hammarstrom L, Fernando MM, et al. (2009) Mapping of multiple susceptibility variants within the MHC region for 7 immune-mediated diseases. *Proc Natl Acad Sci U S A* 106: 18680–18685.
23. Yeo TW, De Jager PL, Gregory SG, Barcellos LF, Walton A, et al. (2007) A second major histocompatibility complex susceptibility locus for multiple sclerosis. *Ann Neurol* 61: 228–236.
24. Fernandez-Morera JL, Rodriguez-Rodero S, Tunon A, Martinez-Borra J, Vidal-Castineira JR, et al. (2008) Genetic influence of the nonclassical major histocompatibility complex class I molecule MICB in multiple sclerosis susceptibility. *Tissue Antigens* 72: 54–59.
25. Allcock RJ, de la Concha EG, Fernandez-Arquero M, Vigil P, Conejero L, et al. (1999) Susceptibility to multiple sclerosis mediated by HLA-DRB1 is influenced by a second gene telomeric of the TNF cluster. *Hum Immunol* 60: 1266–1273.
26. Glas J, Marín K, Brunnler G, Kopp R, Folwaczny C, et al. (2001) MICA, MICB and C1_4_1 polymorphism in Crohn's disease and ulcerative colitis. *Tissue Antigens* 58: 243–249.
27. Lopez-Arbesu R, Ballina-Garcia FJ, Alperi-Lopez M, Lopez-Soto A, Rodriguez-Rodero S, et al. (2007) MHC class I chain-related gene B (MICB) is associated with rheumatoid arthritis susceptibility. *Rheumatology (Oxford)* 46: 426–430.
28. Bolstad AI, Le Hellard S, Kristjansdottir G, Vasaitis L, Kvarnstrom M, et al. (2012) Association between genetic variants in the tumour necrosis factor/lymphotoxin alpha/lymphotoxin beta locus and primary Sjogren's syndrome in Scandinavian samples. *Ann Rheum Dis* 71: 981–988.
29. Shichi D, Kikkawa EF, Ota M, Katsuyama Y, Kimura A, et al. (2005) The haplotype block, NFKBIL1-ATP6V1G2-BAT1-MICB-MICA, within the class III-class I boundary region of the human major histocompatibility complex may control susceptibility to hepatitis C virus-associated dilated cardiomyopathy. *Tissue Antigens* 66: 200–208.
30. De Jager PL, Jia X, Wang J, de Bakker PI, Ottoboni L, et al. (2009) Meta-analysis of genome scans and replication identify CD6, IRF8 and TNFRSF1A as new multiple sclerosis susceptibility loci. *Nat Genet* 41: 776–782.
31. Allen M, Sandberg-Wollheim M, Sjogren K, Erlich HA, Petterson U, et al. (1994) Association of susceptibility to multiple sclerosis in Sweden with HLA class II DRB1 and DQB1 alleles. *Hum Immunol* 39: 41–48.
32. Saruhan-Direskeneli G, Esin S, Baykan-Kurt B, Ornek I, Vaughan R, et al. (1997) HLA-DR and -DQ associations with multiple sclerosis in Turkey. *Hum Immunol* 55: 59–65.
33. Teutsch SM, Bennetts BH, Buhler MM, Heard RN, Stewart GJ (1999) The DRB1 Val86/Val86 genotype associates with multiple sclerosis in Australian patients. *Hum Immunol* 60: 715–722.
34. Wucherpfennig KW, Sette A, Southwood S, Oseroff C, Matsui M, et al. (1994) Structural requirements for binding of an immunodominant myelin basic protein peptide to DR2 isotypes and for its recognition by human T cell clones. *J Exp Med* 179: 279–290.
35. Verreck FA, Termijtelen A, Koning F (1993) HLA-DR beta chain residue 86 controls DR alpha beta dimer stability. *Eur J Immunol* 23: 1346–1350.
36. Barcellos LF, Sawcer S, Ramsay PP, Baranzini SE, Thomson G, et al. (2006) Heterogeneity at the HLA-DRB1 locus and risk for multiple sclerosis. *Hum Mol Genet* 15: 2813–2824.
37. Ramagopalan SV, McMahon R, Dyment DA, Sadovnick AD, Ebers GC, et al. (2009) An extension to a statistical approach for family based association studies provides insights into genetic risk factors for multiple sclerosis in the HLA-DRB1 gene. *BMC Med Genet* 10: 10.
38. Raychaudhuri S, Sandor C, Stahl EA, Freudenberg J, Lee HS, et al. (2012) Five amino acids in three HLA proteins explain most of the association between MHC and seropositive rheumatoid arthritis. *Nat Genet* 44: 291–296.
39. Patsopoulos NA, Esposito F, Reichl J, Lehr S, Bauer D, et al. (2011) Genome-wide meta-analysis identifies novel multiple sclerosis susceptibility loci. *Ann Neurol* 70: 897–912.
40. Hafler DA, Compston A, Sawcer S, Lander ES, Daly MJ, et al. (2007) Risk alleles for multiple sclerosis identified by a genomewide study. *N Engl J Med* 357: 851–862.
41. (ANZgene) AaNZMSGC (2009) Genome-wide association study identifies new multiple sclerosis susceptibility loci on chromosomes 12 and 20. *Nat Genet* 41: 824–828.
42. Browning BL, Browning SR (2009) A unified approach to genotype imputation and haplotype-phase inference for large data sets of trios and unrelated individuals. *Am J Hum Genet* 84: 210–223.
43. Tibshirani R (1996) Regression shrinkage and selection via the lasso. *J Royal Statist Soc B* 58: 267–288.
44. Zou HH, T. (2005) Regularization and variable selection via the elastic net. *J R Stat Soc Series B Stat Methodol* 67: 301–320.
45. Efron BH, T; Johnstone, I ; Tibshirani, R (2012) Least angle regression. *Ann Stat* 32: 407–499.
46. Hastie TT, J; Tibshirani, R; Walther, G (2007) Forward stagewise regression and the monotone lasso. *Electron J Stat* 1: 1–29.
47. Nagelkerke N (1991) A note on a general definition of the coefficient of determination. *Biometrika* 78: 691–692.
48. Purcell S, Neale B, Todd-Brown K, Thomas L, Ferreira MA, et al. (2007) PLINK: a tool set for whole-genome association and population-based linkage analyses. *Am J Hum Genet* 81: 559–575.
49. Pettersen EF, Goddard TD, Huang CC, Couch GS, Greenblatt DM, et al. (2004) UCSF Chimera—a visualization system for exploratory research and analysis. *J Comput Chem* 25: 1605–1612.