

UCLA
Contemporary Music Score Collection

Title

Seis piezas breves

Permalink

<https://escholarship.org/uc/item/0s49d46c>

Author

Valverde, Manuel

Publication Date

2020

Seis piezas breves

For Flute in C, Saxophone alto, Piano, Violin and Cello

Manuel Valverde

Notation and Performance

Score written in real notes.

General performance:

- The work is divided into 6 (six) pieces that must be played in the order indicated in the score. There should never be an *attacca* between pieces; on the contrary, in all cases, there should be a “body relaxation” that demonstrates the completion of each one. The time between each piece will be at the decision of the conductor.
- In all cases, the fingerings provided should be considered as recommendations.

Signs:



+ $\frac{3}{4}$ tone



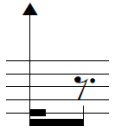
+ $\frac{1}{4}$ tone



- $\frac{3}{4}$ tone



- $\frac{1}{4}$ tone



Highest note of the instrument

For the Strings



Bartok Pizz.



Glissando.



Air Sound. Rub the bow on the bridge so as to produce a white noise as stable as possible.

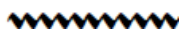
For the Saxophone and Flute



Air Sound.



Glissando.



Bisbigliando

I

♩=48

¹ w.t

Fl. *pp*

Sax. Alto *sfz*

Vln. *sfz*

Vc. *sffz*

Pno. *sffz*

8va

8vb

1. unstable whisper tones.

♩=60

II

Fl. 6

Sax. Alto

Vln.

Vc.

Pno.

p

p

p

mp

p

pp

c.l.b

ricochet c.l.b

15^{ma}

1

p

p

p

pp

Ped.

1. Bow on the bridge.
2. Bisbigliando
3. Col Legno Battuto

III

9 $\text{♩} = 52$

Fl. *p* *mp* *p*

Sax. Alto *p sempre*

Vln. *pizz.* *8va* *mf* *mf* *mf* *8va*

Vc. *p sempre*

Pno. *15* *p sempre* *ppp sempre*

Detailed description: This is a page of a musical score for a chamber ensemble. It features five staves: Flute (Fl.), Saxophone Alto (Sax. Alto), Violin (Vln.), Viola (Vc.), and Piano (Pno.). The score is divided into four measures. The first measure is in 4/4 time, the second and third are in 5/4 time, and the fourth is in 4/4 time. The Flute part includes a tempo marking of quarter note = 52 and dynamic markings of *p*, *mp*, and *p*. The Saxophone Alto part is marked *p sempre*. The Violin part includes a *pizz.* marking, an *8va* (octave) marking, and dynamic markings of *mf*. The Viola part is marked *p sempre*. The Piano part includes a measure number of 15 and dynamic markings of *p sempre* and *ppp sempre*. There are also some performance instructions like '1' and arrows above the Flute staff.

1. Regular tremolo, always in fusas

12

Fl. *f* *R* *pp*

Sax. Alto *(p)*

Vln. *8va*

Vc. *8va*

Pno. 15

Detailed description: This musical score page features five staves. The Flute staff (top) begins at measure 12 with a forte (*f*) dynamic and a trill marked 'R'. It transitions to a piano-piano (*pp*) dynamic in the second measure. The Saxophone Alto staff plays a phrase starting at measure 12 with a piano (*p*) dynamic. The Violin staff has two measures of music, each marked with an 8va dynamic and an accent (>). The Viola staff has two measures of music, each marked with an 8va dynamic and an accent (>). The Piano staff begins at measure 15, with the right hand playing a chord and the left hand playing a bass line. The score is divided into two systems by a bar line. The first system covers measures 12-14, and the second system covers measures 15-17. The time signature changes from 4/4 to 5/4 at measure 14 and returns to 4/4 at measure 17.

14

Fl.

Sax. Alto

Vln.

Vc.

Pno.

15

mf *pp* *mf*

pp *mf*

arco *mp* *mf*

(p)

(p) *(pp)*

Detailed description: This page of a musical score covers measures 14 and 15. It features five staves: Flute (Fl.), Saxophone Alto (Sax. Alto), Violin (Vln.), Viola (Vc.), and Piano (Pno.).
- **Flute (Fl.)**: Starts at measure 14 with a melodic line in 4/4 time, marked *mf*. It transitions to 5/4 time in measure 15, marked *pp*.
- **Saxophone Alto (Sax. Alto)**: Remains mostly silent in measure 14, then plays a few notes in measure 15, marked *pp*.
- **Violin (Vln.)**: Plays a long note in measure 14, marked *mp*, and continues into measure 15, marked *mf*.
- **Viola (Vc.)**: Plays a long note in measure 14, marked *(p)*, and continues into measure 15.
- **Piano (Pno.)**: Features a complex accompaniment in the right hand, marked *(p)*, and a bass line in the left hand, marked *(pp)*.
- **Tempo/Style**: The score includes an 'arco' marking for the violin and various dynamic markings such as *mf*, *pp*, *mp*, and *(p)*.

♩=90

IV

Fl. 17 *f sempre*

Sax. Alto *f sempre*

Vln. *f sempre*

Vc. *f sempre*

Pno. *f*

15^{ma} 8^{va} 5 8^{vb} *fff*

15^{ma} 8^{vb} *fff*

Detailed description of the musical score: The score is for a section titled 'IV' and is marked with a tempo of ♩=90. It consists of 17 measures. The instruments are Flute (Fl.), Saxophone Alto (Sax. Alto), Violin (Vln.), Viola (Vc.), and Piano (Pno.). The Flute part starts at measure 17 and is marked *f sempre*. The Saxophone Alto part has a *f sempre* marking in measure 17. The Violin and Viola parts are marked *f sempre*. The Piano part is marked *f* and features complex rhythmic patterns with triplets and sixteenth notes. Performance markings include *15^{ma}* (15th measure), *8^{va}* (8va), *8^{vb}* (8vb), and *fff* (fortississimo) in the lower piano part.

♩=70

22

Fl.

Sax. Alto

Vln.

Vc.

Pno.

f *sempre*

f

ff

3

15^{ma}

(8)

Detailed description: This is a page of a musical score for a chamber ensemble. It features five staves: Flute (Fl.), Saxophone Alto (Sax. Alto), Violin (Vln.), Viola (Vc.), and Piano (Pno.). The score is in 4/4 time, with a tempo marking of quarter note = 70. The key signature has one sharp (F#). The piece begins at measure 22. The Flute part has a melodic line with triplets and accents, marked *f* *sempre*. The Saxophone Alto, Violin, and Viola parts are mostly silent, with rests. The Piano part has a complex accompaniment with triplets in the right hand and a bass line with a triplet in the left hand, marked *ff*. A 15^{ma} (fifteenth measure) bracket spans the first five measures of the piano accompaniment. The score ends with a circled number 8.

27

Fl.

Sax. Alto

Vln.

Vc.

Pno.

f sempre

pizz.

Detailed description of the musical score: The score is for measures 27-30 in 4/4 time. The Flute part is silent. The Alto Saxophone, Violin, and Viola parts play a rhythmic pattern of eighth notes with accents, marked *f sempre* and *pizz.* The Piano part plays a sequence of chords in the right hand, marked *f sempre*, while the left hand is silent.

V

$\text{♩} = 48$

1 w.t

30

Fl. pp

Sax. Alto fff

Vln. p arco

Vc. fff

Pno. fff

1. Whisper tones
2. Bow on the bridge.

VI

♩=66

33

Fl. *f sempre*

Sax. Alto *p* *ff* *p* *ff*

Vln. *ppp sempre*

Vc. *ppp sempre*

15 Pno. *f sempre*

The score is for measures 33-36. It features five staves: Flute (Fl.), Saxophone Alto (Sax. Alto), Violin (Vln.), Viola (Vc.), and Piano (Pno.). The Flute and Piano parts have fingerings indicated above the notes. The Saxophone Alto part includes a key signature change from one sharp (F#) to one flat (Bb) between measures 34 and 35. The Violin and Viola parts are marked *sul tasto* and play sustained notes with long slurs. The Piano part has a dynamic marking of *f sempre*. The tempo is marked as quarter note = 66.

This musical score page, numbered 11, features five staves: Flute (Fl.), Saxophone Alto (Sax. Alto), Violin (Vln.), Viola (Vc.), and Piano (Pno.). The music is in 4/4 time and consists of measures 38 through 45. The Flute part begins with a series of sixteenth-note runs in measures 38-41, marked with accents (>). The Saxophone Alto part features a melodic line with dynamics ranging from piano (*p*) to forte (*f*). The Violin and Viola parts play sustained notes with dynamic markings from *ppp* to *mp*. The Piano part includes sixteenth-note runs in both hands, with fingering numbers (IV, VI) indicated above and below the notes. The score includes various time signature changes (4/4, 6/4, 3/4) and dynamic markings such as *mf*, *p*, *f*, *ppp*, and *mp*.