

# UC Berkeley

## UC Berkeley Previously Published Works

### Title

Response

### Permalink

<https://escholarship.org/uc/item/0t3615v9>

### Journal

CHEST Journal, 160(3)

### ISSN

0012-3692

### Authors

Lee, Augustine S  
Scofield, R Hal  
Hammit, Katherine Morland  
et al.

### Publication Date

2021-09-01

### DOI

10.1016/j.chest.2021.04.030

Peer reviewed

# Consensus Guidelines for Evaluation and Management of Pulmonary Disease in Sjögren's



Augustine S. Lee, MD; R. Hal Scofield, MD; Katherine Morland Hammitt, MA; Nishant Gupta, MD; Donald E. Thomas, MD; Teng Moua, MD; Kamonpun Ussavarungsi, MD; E. William St Clair, MD; Richard Meehan, MD; Kieron Dunleavy, MD; Matt Makara, MPH; Steven E. Carsons, MD; Nancy L. Carteron, MD, in collaboration with the Consensus Expert Panel (CEP) Members\*

**BACKGROUND:** Pulmonary disease is a potentially serious yet underdiagnosed complication of Sjögren's syndrome, the second most common autoimmune rheumatic disease. Approximately 16% of patients with Sjögren's demonstrate pulmonary involvement with higher mortality and lower quality of life.

**RESEARCH QUESTION:** Clinical practice guidelines for pulmonary manifestations of Sjögren's were developed by the Sjögren's Foundation after identifying a critical need for early diagnosis and improved quality and consistency of care.

**STUDY DESIGN AND METHODS:** A rigorous and transparent methodology was followed according to American College of Rheumatology guidelines. The Pulmonary Topic Review Group (TRG) developed clinical questions in the PICO (Patient, Intervention, Comparison, Outcome) format and selected literature search parameters. Each article was reviewed by a minimum of two TRG members for eligibility and assessment of quality of evidence and strength of recommendation. Guidelines were then drafted based on available evidence, expert opinion, and clinical importance. Draft recommendations with a clinical rationale and data extraction tables were submitted to a Consensus Expert Panel for consideration and approval, with at least 75% agreement required for individual recommendations to be included in the final version.

**RESULTS:** The literature search revealed 1,192 articles, of which 150 qualified for consideration in guideline development. Of the original 85 PICO questions posed by the TRG, 52 recommendations were generated. These were then reviewed by the Consensus Expert Panel and 52 recommendations were finalized, with a mean agreement of 97.71% (range, 79%-100%). The recommendations span topics of evaluating Sjögren's patients for pulmonary manifestations and assessing, managing, and treating upper and lower airway disease, interstitial lung disease, and lymphoproliferative disease.

**INTERPRETATION:** Clinical practice guidelines for pulmonary manifestations in Sjögren's will improve early identification, evaluation, and uniformity of care by primary care physicians, rheumatologists, and pulmonologists. Additionally, opportunities for future research are identified.

CHEST 2021; 159(2):683-698

**KEY WORDS:** guideline; lung; pulmonary; Sjögren; Sjögren's

**ABBREVIATIONS:** ACR = American College of Rheumatology; CEP = Consensus Expert Panel; CTD = connective tissue disease; DLCO = diffusing capacity of the lung for carbon monoxide; EULAR = European League Against Rheumatism; HRCT = high-resolution CT; ILD =

interstitial lung disease; MALT = mucosa-associated lymphoid tissue; NYHA = New York Heart Association; PFT = pulmonary function test; PICO = Patient, Intervention, Comparison, Outcome; TRG = Topic Review Group; UIP = usual interstitial pneumonia

Clinical practice guidelines for the diagnosis, management, and treatment of pulmonary manifestations of Sjögren's were developed by the Sjögren's Foundation after identifying a critical need for early diagnosis and improved quality and consistency of care. Pulmonary disease is a potentially serious yet underdiagnosed complication of Sjögren's syndrome, a chronic autoimmune disease with substantial disease morbidity and burden as well as reduced quality of

---

**AFFILIATIONS:** From the Division of Pulmonary, Allergy and Sleep Medicine, Department of Internal Medicine (A. Lee), Mayo Clinic, Jacksonville, FL; Arthritis and Clinical Immunology Program (R. Scofield), Oklahoma Medical Research Foundation, Oklahoma City, OK; Department of Medicine (R. Scofield), University of Oklahoma Health Sciences Center, Oklahoma City, OK; Medical and Research Services (R. Scofield), Oklahoma City Department of Veterans Affairs Medical Center, Oklahoma City, OK; Sjögren's Foundation (K. Hammitt and M. Makara), Reston, VA; Division of Pulmonary Critical Care and Sleep Medicine, University of Cincinnati and Medical Service, VA Medical Center (N. Gupta), Cincinnati, OH; Uniformed Services University of the Health Sciences (D. Thomas), Bethesda, MD; Arthritis and Pain Associates of Prince George's County (D. Thomas), MD; Department of Pulmonary Medicine, Mayo Clinic (T. Moua), Rochester, MN; Division of Pulmonary, Critical Care and Occupational Medicine, University of Iowa Health Care (K. Ussavarungsi), Carver College of Medicine, Iowa City, IA; Division of Rheumatology and Immunology, (E. St. Clair), Duke University Medical Center, Durham, NC; National Jewish Health (R. Meehan), Denver, CO; George Washington University Cancer Center (K. Dunleavy), Washington, DC; Division of Rheumatology, Allergy and Immunology (S. Carsons), New York University Winthrop Hospital and NYU Langone Health, New York, NY; and Division of Rheumatology (N. Carteron), University of California, San Francisco, CA; and School of Optometry (N. Carteron), Sjögren's Clinic, University of California, Berkeley, CA. \*Consensus Expert Panel (CEP) Members are listed in the Acknowledgments.

An abstract on the formation of the Topic Review Group and areas to be covered was presented in a poster format at the 2018 International Symposium on Sjögren's Syndrome, April 18-21, 2018, Washington, DC. A poster was accepted for the May 2020 ATS annual meeting, which was rescheduled as a virtual meeting. An updated poster was uploaded on July 30, 2020, for the later meeting.

**DISCLAIMER:** The Sjögren's Foundation developed these Clinical Practice Guidelines with an expert group of rheumatologists and pulmonologists and an oncologist to help guide ALL health-care providers in managing and treating pulmonary manifestations of Sjögren's patients. They are not intended to prescribe care for individual patients and may not apply to certain clinical scenarios or take into account the nuances of clinical care. These guidelines are intended for Sjögren's and lung disease and may not apply to those with other systemic autoimmune disorders. Clinicians are asked to weigh various factors, including unique patient-specific nuances, patient preferences, and cost, in their decision-making when considering these Recommendations.

**FUNDING/SUPPORT:** The Sjögren's Foundation Clinical Practice Guidelines are supported by the Foundation with no industry funding. No compensation was paid for study participation.

**CORRESPONDENCE TO:** Katherine Morland Hammitt, MA; e-mail: [khammitt@sjogrens.org](mailto:khammitt@sjogrens.org)

Copyright © 2020 The Authors. Published by Elsevier Inc under license from the American College of Chest Physicians. This is an open access article under the CC BY-NC-ND license (<http://creativecommons.org/licenses/by-nc-nd/4.0/>).

**DOI:** <https://doi.org/10.1016/j.chest.2020.10.011>

life.<sup>1,2</sup> Sjögren's not occurring with another autoimmune disease has a prevalence second only to rheumatoid arthritis among the inflammatory rheumatic illnesses,<sup>3</sup> and although the disease can be observed in children and men,<sup>4</sup> it is most prevalent in women.<sup>5</sup>

Approximately 10% to 20% of Sjögren's patients demonstrate pulmonary involvement with an associated higher mortality and lower quality of life.<sup>6-11</sup> In addition, up to 65% of asymptomatic Sjögren's patients will have abnormal pulmonary imaging,<sup>7</sup> emphasizing the need for provider awareness of pulmonary manifestations and education on evaluation, monitoring, and treatment. Pulmonologists are encouraged to consider the possibility of Sjögren's in patients with pulmonary disease who have not previously been diagnosed as having Sjögren's. As such, pulmonologists can play an important role in Sjögren's diagnosis and ensure that nonpulmonary complications of Sjögren's are addressed by the appropriate specialists.

---

## Materials and Methods

A rigorous and transparent methodology was followed according to the American College of Rheumatology (ACR) guidelines.<sup>12</sup> The methodology employed for these guidelines was first developed and used by the Foundation for recommendations for rheumatologic management in Sjögren's<sup>13</sup> and included direction from the ACR as well as other guidelines methodology consultants.<sup>14</sup> The Pulmonary Topic Review Group (TRG) included equal parts rheumatologists and pulmonologists (n = 4 each) and one hematologist-oncologist as well as participation and oversight by a rheumatologist chair for all Foundation guidelines and a rheumatology/systemic symptoms guidelines chair. The TRG defined systematic review parameters and end points (e-Appendix 1), including MEDLINE/PubMed peer-reviewed articles in English between January 1, 1990, and February 1, 2020, and studies with Sjögren's patients classified or diagnosed by any published set of criteria. Although currently either the 2002 American-European Consensus Group<sup>15</sup> or the 2016 ACR/European League Against Rheumatism (EULAR)<sup>16</sup> classification criteria for primary Sjögren's are utilized most often, a number of criteria have been used historically.

An outline with clinical questions was developed based on the PICO (Patient, Intervention, Comparison, Outcome) format (e-Appendix 2). For the systematic review, literature search terms were compiled by the TRG, and the searches were executed by a librarian (e-Appendix 1). Each article was reviewed by a minimum of two TRG members for eligibility and assessment of quality of evidence. Full data were extracted into four tables: Study Characteristics, Sample and Disease, Evidence, and Quality (<https://www.sjogrens.org/researchers-providers/clinical-practice-guidelines>). The Quality table rated the overall quality of each study according to criteria related to study design and the risk of bias used in recommendation development.

Guidelines were drafted based on available evidence using a strength of the evidence rating (e-Appendix 3), the expertise of the TRG and Consensus Expert Panel (CEP) members who reviewed the recommendations, and clinical importance. Each recommendation also was rated for the strength of the recommendation, which was gauged by the TRG based on a combination of available evidence as

well as the confidence level that the recommendation offers the best current guidance for practice.

Draft recommendations and strength of the recommendation were submitted to the CEP for consideration and approval, with at least 75% agreement required for inclusion in the manuscript. A clinical rationale for each recommendation and data extraction tables for articles used in developing the recommendations also were provided. The CEP, composed of 68 members (including 40 rheumatologists, 21 pulmonologists, and seven additional members, all of whom were Sjögren's patients or family of patients [e-Appendix 4]), voted on each recommendation using a six-point Likert scale, the strength of the recommendation (rating), and provided commentary for TRG

## Results

The TRG originally developed 85 topics/questions in the PICO format that spanned epidemiology, evaluation, diagnostics, and therapeutics of Sjögren's-related pulmonary manifestations, including upper and lower airway disorders, interstitial lung diseases, pulmonary vascular disease, and lymphoproliferative disorders. The number of questions was reduced after TRG members ranked all clinical questions as Primary, Secondary, or Minor in terms of the question's importance for recommendation development, and final selection was determined by TRG leadership when consensus was lacking. Following the literature search, some PICO questions were determined to be irrelevant and/or not suited to recommendations for a pulmonary condition or to be within the scope of this paper.

Medical literature searches utilizing the predefined search terms and search criteria (e-Appendix 1) identified 1,192 articles, of which 178 abstracts were selected and 150 of those deemed qualified for data extraction and use in guideline development. Abstracts identified by the literature search but eliminated by the TRG were excluded for the following reasons: not relevant to guidelines (such as unrelated to Sjögren's and/or pulmonary), article type (commentary, editorial, letter to the editor), case studies that provided no unique information, or were not in English (e-Appendix 1, Quorum Diagram).

The TRG then generated 52 recommendations along with a rating on the strength of each recommendation that was submitted to the CEP. A clinical rationale for each recommendation (e-Appendix 5), and all references with data extracted were provided in support of the recommendations. Consensus agreement on the 102 questions used to form the recommendations and ratings exceeded the required 75% threshold after one round, with a range of agreement between 79% to 100% and an average of nearly 98%. The CEP results are provided in e-Appendix 4. Additionally, commentaries

review. If the consensus threshold was not met, the recommendation would be adjusted by the TRG until the consensus threshold was met. The commentary provided by the CEP was considered in the final wording of the recommendations and clinical rationales. Recommendations were again evaluated by the CEP following minor wording changes to better align with standard guideline language.

The formal consensus process was deemed especially critical in view of the lack of high-quality evidence. The guidelines committee utilized principles of the American Society of Clinical Oncology, Grading of Recommendations Assessment, Development and Evaluation, Agency for Health Research and Quality, and the US Preventive Services Task Force to formulate the methodology.

provided by the CEP were reviewed by the TRG and led to rewording 12 recommendations and 13 clinical rationales without altering their substance. Because these recommendations were intended to be wide-reaching and used across multiple specialties, the authors preferred to make firm recommendations and avoided vaguer terms such as "may be considered" when reasonable.

### Evaluation for Lung Involvement

Consensus recommendations on evaluating Sjögren's patients for potential pulmonary signs and symptoms and the use of imaging, full (complete) pulmonary function tests (PFTs), which includes spirometry, diffusing capacity of the lung for carbon monoxide (DLCO), and lung volumes ideally measured by body plethysmography, and bronchoscopy are listed in Table 1 and Figure 1. In addition, we have provided practical clinical guides to assist in the history taking and symptom detection for evaluation purposes in e-Appendix 6. An additional consideration that was borne out of the literature review was that Sjögren's is often diagnosed after a pulmonary disorder is initially recognized. These include patients with airway disorders (eg, refractory cough, small airway disease), indeterminate interstitial lung diseases (ILD), and pulmonary lymphoproliferative disorders (eg, mucosa-associated lymphoid tissue [MALT]-type lymphoma). Table 2 provides a list of Sjögren's symptoms for the clinician to consider when the etiology of a patient's pulmonary condition remains undiagnosed.

Since lung involvement is common in Sjögren's, a baseline chest radiograph is recommended. If concern is high for lung involvement, however, a high-resolution CT (HRCT) scan may be preferred due to its higher sensitivity and specificity.<sup>17,18</sup> Full PFTs as described above may additionally identify patients with subclinical Sjögren's lung disease.<sup>19</sup> Although few outcomes data exist, a baseline chest radiograph and full PFTs were

**TABLE 1 ] Recommendations for Evaluating Patients With Sjögren's**

Recommendation	Strength of Evidence	Strength of Recommendation
<b>Recommendations: Evaluating asymptomatic Sjögren's patients for pulmonary complications</b>		
1. Serologic biomarkers must not be employed to evaluate for pulmonary involvement in patients with established Sjögren's disease.	INTERMEDIATE	STRONG
2. Due to the prevalence of respiratory involvement in Sjögren's, clinicians must obtain a detailed medical history inquiring about respiratory symptoms in all Sjögren's patients at the initial and every subsequent visit.	HIGH	STRONG
3. In Sjögren's patients without respiratory symptoms, a baseline two-view chest radiograph may be performed. The baseline chest radiograph can (1) help identify pulmonary involvement despite the absence of symptoms, (2) identify alternate etiologies of sicca symptoms such as sarcoidosis, vasculitis, and lymphoma, and (3) serve as a baseline for future comparisons.	INTERMEDIATE	WEAK
4. In Sjögren's patients who have no respiratory symptoms, baseline complete PFTs may be considered to evaluate for the presence of underlying pulmonary manifestations. PFTs should include pre- and post-bronchodilator spirometry, lung volumes, and diffusing capacity of the lung for carbon monoxide. Abnormalities identified may require further corroboration with advanced testing.	INTERMEDIATE	WEAK
5. In asymptomatic Sjögren's patients, routine echocardiogram is not recommended.	INTERMEDIATE	STRONG
<b>Recommendations: Evaluating Sjögren's patients with pulmonary symptoms</b>		
1A. In Sjögren's patients with chronic cough and/or dyspnea, complete PFTs and HRCT should be done to evaluate for pulmonary involvement.	INTERMEDIATE	MODERATE
1B. In a Sjögren's patient with respiratory symptoms, the interval for repeat HRCT and PFTs must be determined on a case-by-case basis and individualized according to the nature and severity of the underlying pulmonary abnormality and the degree of symptoms and functional impairment.	INSUFFICIENT	STRONG
2. In a Sjögren's patient with dyspnea, an echocardiogram is recommended in the following circumstances: a) In patients with suspected pulmonary hypertension b) In patients with unexplained dyspnea after pulmonary etiologies (asthma, small airway disease, bronchiectasis, ILD) have been excluded c) In patients with suspected cardiac involvement	HIGH	STRONG
3. In a Sjögren's patient with respiratory symptoms, a CTPA to look for pulmonary embolism must not be performed routinely in all patients but rather dictated by clinical suspicion for pulmonary embolism in individual circumstances. If clinically concerned about a pulmonary embolism, CTPA is the confirmatory test of choice. Ventilation-perfusion scan should only be considered in the following circumstances: a) To rule out chronic thromboembolic pulmonary hypertension in patients with pulmonary hypertension b) When clinical concern for pulmonary embolism exists, and a physician is unable to do a CTPA because of patient allergy to contrast or renal insufficiency	LOW	STRONG
<b>Recommendations: Evaluating for Sjögren's in patients with lung disease</b>		
1. In patients who have an uncharacterized ILD, diffuse cystic lung disease, or pulmonary lymphoma, clinical and serologic evaluation for Sjögren's is recommended.	HIGH	STRONG
<b>Recommendations: Use of bronchoscopy</b>		
1. In a Sjögren's patient with respiratory symptoms, bronchoscopy with BAL must not be performed routinely but determined on a case-by-case basis and limited to special circumstances, such as the need to: a) Rule out infectious etiologies, especially in patients on immune suppression b) Rule out endobronchial abnormalities such as amyloidosis in patients with chronic cough not otherwise responsive to treatment c) Distinguish between other etiologies of sicca symptoms such as sarcoidosis	LOW	STRONG
2. In a Sjögren's patient with respiratory symptoms, use of bronchoscopy with endobronchial biopsies and transbronchial lung biopsy are not recommended for routine use.	INSUFFICIENT	STRONG

CTPA = CT pulmonary angiogram; ILD = interstitial lung diseases; PFTs = pulmonary function tests.

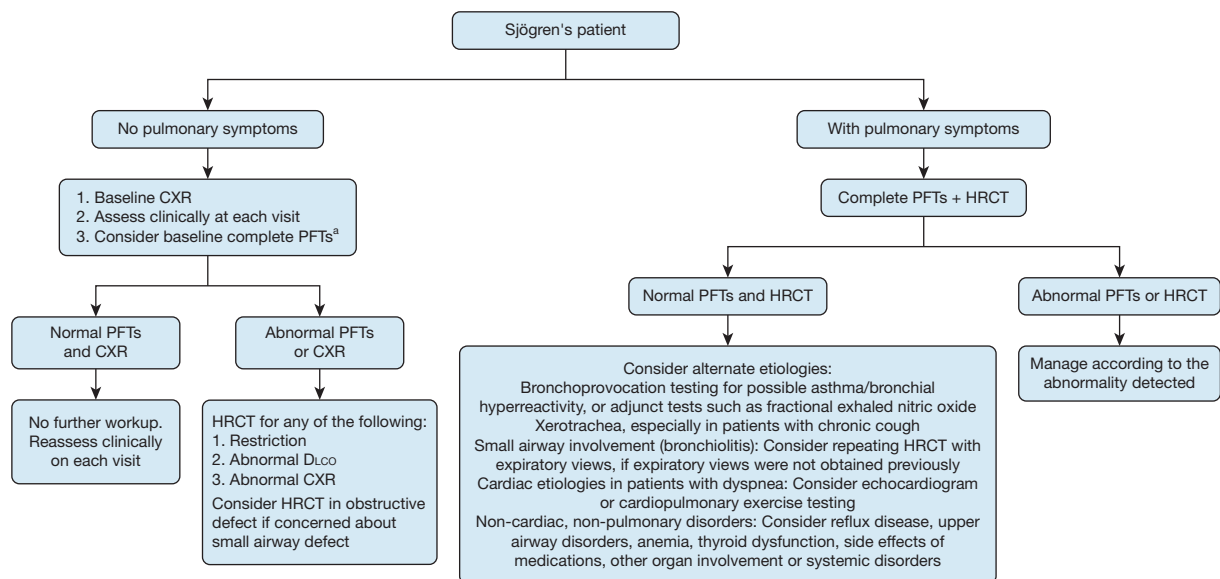


Figure 1 – Respiratory evaluation for Sjögren’s patients. <sup>a</sup>The benefit of obtaining baseline PFTs in asymptomatic Sjögren’s patients regarding long-term outcomes is not clear. This paucity of evidence and the potential costs of the test should be taken into account and discussed with individual patients prior to proceeding with PFTs. Complete PFTs includes spirometry, DLCO, and lung volumes, ideally measured by body plethysmography. CXR = chest radiograph; DLCO = diffusing capacity of the lung for carbon monoxide; HRCT = high-resolution CT; PFTs = pulmonary function tests.

recommended by the TRG and the CEP when weighing the risks and benefits, as these tests are likely to aid in identifying subclinical disease, in future comparisons when symptoms develop, and in guiding the timing of any specific interventions.

In general, all symptomatic patients should have serial clinical and PFT monitoring. However, monitoring

strategy depends on the clinician’s consideration of the specific condition, its severity, the patient’s symptoms and functional status, and the pace of clinical deterioration. While no specific guidance regarding intervals for repeat testing can be given, the majority of TRG members repeat PFTs at least every 6 to 12 months to better understand longitudinal disease trajectory. Typically, spirometry is performed as the main

TABLE 2 ] Evaluating for Potential Sjögren’s in Patients with Pulmonary Symptoms

Symptom	Questions to Ask Patient
Oral symptoms	<ul style="list-style-type: none"> <li>• Does your mouth feel dry?</li> <li>• Do you need liquids to swallow dry foods?</li> <li>• Do you frequently sip/drink water?</li> <li>• Do you have a burning sensation in the mouth?</li> <li>• Do you have painful sores or red patches at the corners of the mouth (angular cheilitis)?</li> <li>• Do you get frequent dental cavities, particularly gumline cavities?</li> <li>• Do your teeth tend to chip, crack, and/or erode on the surfaces?</li> <li>• Do you suffer from gum inflammation or receding gums (gingivitis)?</li> </ul>
Ocular symptoms	<ul style="list-style-type: none"> <li>• Do your eyes frequently feel dry, irritated, itchy, or painful?</li> <li>• Do you have a sensation that there might be a foreign body in your eye?</li> <li>• Are your eyes light sensitive?</li> <li>• Do you frequently use eye drops for irritation or dryness?</li> <li>• Is your vision frequently blurry, or do you have unexplained vision changes?</li> </ul>
Other symptoms	<ul style="list-style-type: none"> <li>• Have you noticed gland swelling in your face or along the jaw line (swollen parotid and/or submandibular glands)?</li> <li>• Do you suffer dryness of the vagina (is intercourse painful?) or skin (is your skin itchy or flaking?)?</li> <li>• Do your feet, legs, or hands ever feel numb, have a change in sensation, or have burning pain (peripheral neuropathy)?</li> <li>• Do you suffer from extreme fatigue?</li> <li>• Do your joints or muscles ache when you are not sick (arthralgias, myalgias)?</li> <li>• Do you ever notice your fingers turning pale or blue in the cold (Raynaud’s disease)?</li> </ul>

Symptoms should prompt the physician to engage in further serologic evaluation and/or rheumatology consultation.



**TABLE 3 ] Recommendations for Assessment and Management of Upper and Lower Airway Disease in Sjögren's Patients**

Recommendations: Assessment and Management of Upper and Lower Airway Disease in Sjögren's Patients	Strength of Evidence	Strength of Recommendation
1. In Sjögren's patients with symptomatic vocal cord cystic lesions ("bamboo nodules"), less aggressive interventions, including voice therapy, inhaled corticosteroids, or intra-lesional corticosteroid injection, should be tried first. Surgical resection should be considered if initial measures fail, with consultation by a laryngologist with experience in Sjögren's.	LOW	MODERATE
2. Sjögren's patients with dry bothersome cough and documented absence of lower airway or parenchymal lung disease must be assessed for treatable or preventable etiologies other than xerotrachea, including gastroesophageal reflux, postnasal drip, and asthma.	INTERMEDIATE	STRONG
3. In a Sjögren's patient with dry, nonproductive cough, humidification, secretagogues, and guaifenesin may be empirically initiated after exclusion of other causes.	INSUFFICIENT	WEAK
4. The use of humidification for improving positive airway pressure tolerance and compliance may be recommended in Sjögren's patients.	INSUFFICIENT	WEAK
5. Smoking cessation is recommended in all Sjögren's patients.	INTERMEDIATE	STRONG
6A. In Sjögren's patients with symptomatic small airway disease, bronchoscopic biopsy is not recommended as part of routine assessment or evaluation.	INSUFFICIENT	STRONG
6B. In Sjögren's patients with symptomatic small airway disease, complete pulmonary function testing must be performed to assess severity of small airway disease, and high-resolution CT imaging with additional expiratory views can be helpful in suggesting its presence.	INSUFFICIENT	STRONG
7. In Sjögren's patients with small airway disease, time-limited empiric therapy in newly diagnosed and previously untreated disease may include: <ul style="list-style-type: none"> <li>• A short course of systemic steroids for 2-4 weeks with a repeat spirometry to determine reversibility, especially if uncontrolled asthma is suspected</li> <li>• Nebulized or inhaled short or long-acting bronchodilators and/or inhaled corticosteroids if there is physiological obstruction</li> <li>• Short course (ie, 2-3 months) of empiric macrolide antibiotics (most commonly azithromycin 250 mg 3 days a week) for persistent, nonreversible, symptomatic bronchiolitis</li> </ul>	LOW	WEAK
8. It is recommended that Sjögren's patients with clinically relevant bronchiectasis be treated similarly to those with primary or secondary bronchiectasis of other etiologies and may include any of the following: <ul style="list-style-type: none"> <li>• Mucolytic agents/expectorants</li> <li>• Nebulized saline or hypertonic saline</li> <li>• Oscillatory positive expiratory pressure</li> <li>• Postural drainage</li> <li>• Mechanical high-frequency chest wall oscillation therapies</li> <li>• Chronic macrolides in those without non-tuberculous mycobacterium colonization or infection</li> </ul>	LOW	STRONG

monitoring test at each interval, with complete PFTs, which include lung volumes and DLCO performed at longer intervals.

### Upper and Lower Airway Disorders

Upper and lower airway disease reported in association with or as a result of Sjögren's includes xerotrachea, dysphagia, laryngopharyngeal reflux, vocal cord cystic lesions ("bamboo nodules"), OSA, bronchiectasis, bronchiolitis, obstructive lung disease, and reactive airway disease. Approximately 38% of Sjögren's patients

have chronic cough.<sup>20</sup> Interestingly, among patients without an initial Sjögren's diagnosis, an unexplained cough associated with dry eyes led to confirmation of Sjögren's in 36%.<sup>21</sup> An evaluation is warranted in a Sjögren's patient with chronic cough (> 8 weeks), starting with an assessment for common causes (eg, asthma, gastroesophageal reflux disease, upper airway cough syndrome, non-asthmatic eosinophilic bronchitis),<sup>22</sup> followed by evaluation for pulmonary complications of Sjögren's, including xerotrachea, ILD, bronchiolitis, bronchiectasis, and pulmonary lymphoma.

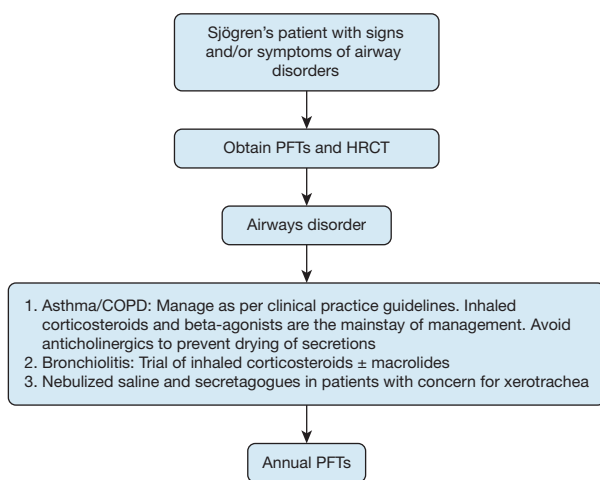


Figure 2 – Evaluation and management of patients with Sjögren's who exhibit symptoms and/or physical examination signs of airway disorders.<sup>25,26</sup> Details regarding PFTs and HRCT examination are given in Figure 1. HRCT = high-resolution CT; pulmonary function tests.

Small airway disease in the setting of Sjögren's may represent histopathologic follicular or constrictive bronchiolitis.<sup>23</sup> Although there is often overlap on imaging and physiology, these distinctive histologic findings have variable types of inflammation (neutrophilic, lymphocytic, eosinophilic, fibroblast) and bronchiolocentric fibrosis. Bronchiectasis is characterized radiographically by the atypical dilation of the airways larger than the accompanying bronchial artery, or visible to 1 cm of the costal pleural margin. Inhaled corticosteroids, while possibly increasing the risk for candidiasis, have been recommended for inflammatory airway disease by the 2020 EULAR recommendations for managing Sjögren's.<sup>24</sup> Bronchodilators may be tried empirically. And, while no broadly accepted criteria exist for xerotrachea, following exclusion of other causes of cough, empirical humidification in all Sjögren's patients with chronic cough is recommended along with consideration of an empiric trial of a secretagogue and/or guaifenesin. Most of these and other recommendations as listed in Table 3 largely draw upon experience from related airway disorders outside of the specific context of Sjögren's. Figure 2 is a suggested clinical pathway based on these recommendations.<sup>25,26</sup>

### Interstitial Lung Disease

Most Sjögren's patients who have ILD exhibit pulmonary symptoms such as shortness of breath, cough, sputum production, or chest pain.<sup>6</sup> Symptom severity varies from asymptomatic to minimal dyspnea on exertion to severe. The onset of ILD increases over

time, with one study showing a prevalence of 10% within the first year of diagnosis and 20% after 5 years.<sup>8</sup> Among Sjögren's patients with ILD, specific subtypes that have been reported include: nonspecific interstitial pneumonia 45%, respiratory bronchiolitis 25%, usual interstitial pneumonia (UIP) 16%, lymphoid interstitial pneumonia 15%, organizing pneumonia 7%, amyloid 6%, and lymphoma 4%.<sup>6</sup>

Cystic lung disease is found more commonly in Sjögren's compared with the other connective tissue diseases (CTDs). Martinez-Balzano et al<sup>27</sup> reported that cystic lung disease was associated with older age, a diagnosis of secondary Sjögren's, and elevated anti-SSA (or Ro) antibody, whereas Lechtman et al<sup>28</sup> reported a higher frequency of anti-SSB (or La) antibody. Pulmonary function testing was nonspecific, and no significant radiographic progression was noted (n = 12) after a median follow-up of 4 years. Two patients had secondary infections complicating the cysts, but pneumothoraces appeared to be an uncommon presentation of cystic lung disease. The prognosis of cystic lung disease in Sjögren's depends on the specific histopathologic findings. Cystic lung disease in Sjögren's is most commonly secondary to lymphoid interstitial pneumonia/follicular bronchiolitis but might also suggest the presence of amyloid or MALT lymphoma, especially if associated with concomitant nodules.<sup>29</sup>

A large proportion of the ILDs in Sjögren's tend to follow an indolent course. However, ILD with a UIP pattern in Sjögren's can be progressive and portend a worse prognosis.<sup>30,31</sup> Acute exacerbations of nonspecific interstitial pneumonia and UIP have been reported and can precipitate respiratory failure and death. Most cases do not require biopsy confirmation, as the diagnosis usually can be made based on HRCT and PFTs, and treatment is not always necessary.<sup>30</sup> Ito et al<sup>32</sup> reported that mortality is associated with decreased baseline PaO<sub>2</sub> and presence of microscopic honeycombing. A large retrospective cohort from Taiwan<sup>33</sup> of 4,954 Sjögren's patients reported that the incidence of respiratory failure was higher than in non-Sjögren's patients, regardless of sex, age, and comorbidities. Respiratory failure in primary Sjögren's was most commonly attributed to ILD (25%), followed by small airway disease (22%), desiccation of upper respiratory tract (17%), and large airway obstruction (8%).

When obtaining baseline PFTs, it should be noted that discordance between PFT abnormalities, degree of symptoms, and HRCT findings can occur.<sup>7,34,35</sup> Additionally, patients with ILD have variable natural



**TABLE 4 ] Recommendations for ILD in Sjögren’s Patients**

Recommendation	Strength of Evidence	Strength of Recommendation
<b>Recommendations: ILD—diagnosis, evaluation, and management</b>		
1. In a Sjögren’s patient with suspected ILD, an HRCT with expiratory views is recommended.	HIGH	STRONG
2. In a Sjögren’s patient with suspected ILD, oximetry testing is recommended as part of a patient’s initial evaluation.	HIGH	STRONG
3. Baseline PFTs must be performed in all Sjögren’s patients with suspected or established ILD and followed initially at 3- to 6-month intervals for at least 1 year. Subsequent testing requires consideration of the type of ILD, the clinical course, and the pace of change noted on the serial PFTs. The baseline PFTs should include lung volumes by body plethysmography, spirometry, diffusing capacity, and oxygen saturations at rest and exercise.	LOW	STRONG
4. In a Sjögren’s patient with ILD, a surgical lung biopsy is not routinely recommended. A lung biopsy may be considered following a multidisciplinary review where a biopsy may have significant management implications, such as in: <ul style="list-style-type: none"> <li>• Neoplastic and non-neoplastic lymphoproliferative disorder</li> <li>• Other cancers</li> <li>• Amyloid</li> <li>• Progressive deterioration and a suspected infection failing empiric therapies where less invasive testing proved nondiagnostic</li> </ul>	INTERMEDIATE	STRONG
5. If a Sjögren’s-ILD patient is asymptomatic for lung disease or demonstrates minimal impairment on PFTs or HRCT, serial monitoring by PFTs is recommended every 3-6 months to establish disease trajectory and initiation of pharmacotherapy only if serial studies document a significant decline in lung function.	INTERMEDIATE	STRONG
<b>Recommendations: ILD—nonpharmacological and other management</b>		
1. Vaccination: All Sjögren’s patients must be immunized against influenza and pneumococcal infection (Pneumovax and Prevnar) in accordance with Centers for Disease Control and Prevention guidelines.	HIGH	STRONG
2. Pneumothorax and cystic lung disease: Because a Sjögren’s patient with cystic lung disease might have an increased risk of pneumothorax, patients and caregivers/family must be educated about signs and symptoms of pneumothorax and instructed to seek immediate medical attention if they experience signs or symptoms.	INTERMEDIATE	STRONG
3. Pulmonary rehabilitation and ILD: In a symptomatic Sjögren’s patient with ILD and impaired pulmonary function, referral for pulmonary rehabilitation is recommended.	INTERMEDIATE	STRONG
4. Oxygen and ILD: In a Sjögren’s patient with suspected ILD and clinically significant resting hypoxemia (defined by resting oxygen saturation < 88%, PaO <sub>2</sub> < 55 mm Hg or < 60 mm Hg with complication of chronic hypoxemia such as cor pulmonale), long-term oxygen therapy is recommended.	INTERMEDIATE	STRONG
5A. Air travel and ILD: In a Sjögren’s-ILD patient considering air travel, the need for supplemental oxygen should be evaluated by a physician.	INTERMEDIATE	MODERATE
5B. Air travel and ILD: In a Sjögren’s patient with ILD, discouraging air travel is not recommended unless the patient develops signs and symptoms of pneumothorax or new onset/unexplained chest pain or dyspnea prior to boarding.	INTERMEDIATE	STRONG
6. Lung transplant and ILD: In a Sjögren’s patient with ILD whose condition is advanced with resting hypoxia or whose lung function is rapidly deteriorating, lung transplant evaluation is recommended.	INTERMEDIATE	STRONG
<b>Recommendations: ILD—pharmacological interventions</b>		
1A. Symptomatic/moderate-severe ILD—systemic corticosteroids: In Sjögren’s patients with symptomatic ILD with moderate to severe impairment on lung function, imaging, or in gas-exchange and especially in organizing pneumonia, systemic steroids should be considered as a first-line treatment at a dosage	INTERMEDIATE	MODERATE

(Continued)

**TABLE 4 ] (Continued)**

Recommendation	Strength of Evidence	Strength of Recommendation
<p>based on the clinical context and disease severity, with standard dosage being 0.5-1.0 mg/kg.</p>		
<p><b>1B. Cautions for systemic corticosteroids:</b> In a Sjögren’s patient with ILD or a related disorder, providers must be aware of the following risks/potential harms:            Potential short-term side effects<sup>a</sup>:</p> <ul style="list-style-type: none"> <li>● Glucose intolerance</li> <li>● Avascular necrosis</li> <li>● Mineralocorticoid effect, leading to potential fluid retention and/or hypertension</li> <li>● Myopathy</li> <li>● Psychological, including hyperactivity, insomnia, psychosis</li> <li>● Pancreatitis</li> <li>● Hypertension</li> <li>● Truncal obesity</li> <li>● Acne</li> <li>● Hematopoietic, including leukocytosis</li> <li>● Ecchymosis</li> <li>● Acanthosis nigricans</li> </ul> <p>Potential long-term side effects:</p> <ul style="list-style-type: none"> <li>● Osteoporosis</li> <li>● Diabetes</li> <li>● Adrenal insufficiency</li> <li>● GI symptoms, including peptic ulcer, hepatic steatosis</li> <li>● Ophthalmological, including glaucoma, cataract</li> <li>● Hyperlipidemia</li> <li>● Congenital malformation in utero exposure (very rare)</li> <li>● Growth suppression (only in pediatrics)</li> </ul>	HIGH	STRONG
<p><b>2A. Symptomatic/moderate-severe ILD—MMF or azathioprine:</b> In a Sjögren’s patient with symptomatic ILD with moderate to severe impairment as determined by lung function testing, imaging, or gas-exchange, MMF or azathioprine should be considered when long-term steroid use is contemplated and steroid-sparing immunosuppressive therapy is required.</p>	INTERMEDIATE	MODERATE
<p><b>2B. Cautions for azathioprine:</b> In a Sjögren’s patient with ILD or related disorder and considering use of azathioprine, patients and health-care providers must be aware of potential risks for drug-induced pneumonitis, GI upset, hepatotoxicity, bone marrow suppression, rash, and hypersensitivity syndrome. Testing for thiopurine methyltransferase activity or genotype before initiating azathioprine is recommended to reduce the risk of severe, life-threatening leukopenia due to complete lack of thiopurine methyltransferase activity.<sup>a</sup></p>	HIGH	STRONG
<p><b>2C. Cautions for MMF:</b> In a Sjögren’s patient with ILD or related disorder and considering use of MMF, patients and health-care providers must be aware of potential side effects, including nausea, diarrhea, hepatotoxicity, and bone marrow suppression.<sup>a</sup></p>	HIGH	STRONG
<p><b>3. Symptomatic/moderate-severe ILD—maintenance therapies:</b> Following initial treatment for Sjögren’s patients with ILD who are symptomatic and in whom PFTs or HRCT demonstrated moderate-severe impairment, first-line maintenance drugs should be either MMF or azathioprine.</p>	LOW	MODERATE
<p><b>4A. Symptomatic/ moderate-severe ILD—second-line therapies:</b> If initial treatment with MMF or azathioprine is insufficient or not tolerated in Sjögren’s patients with ILD who are symptomatic and in whom PFTs or HRCT demonstrated moderate-severe impairment, subsequent second-line maintenance drugs may include rituximab and calcineurin inhibitors, cyclosporine, or tacrolimus.</p>	LOW	WEAK

(Continued)

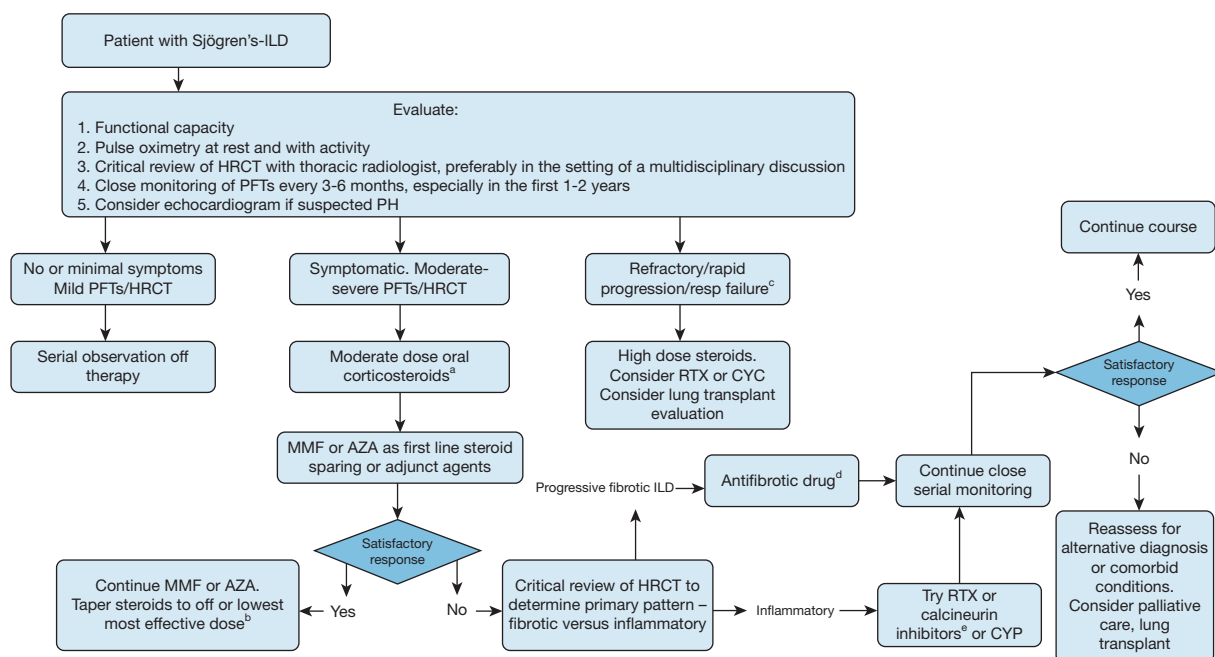
**TABLE 4 ] (Continued)**

Recommendation	Strength of Evidence	Strength of Recommendation
<p><b>4B. Cautions for rituximab:</b> In a Sjögren’s patient with ILD considering use of rituximab, patients and health-care providers must be aware of the following potential risks/harms, although rare<sup>a</sup>:</p> <ul style="list-style-type: none"> <li>● Pneumonitis</li> <li>● Worsening of ILD</li> <li>● Infusion reactions</li> <li>● Tumor lysis syndrome in those with NHL</li> <li>● Bacterial, viral, or fungal infections including:               <ul style="list-style-type: none"> <li>● Hepatitis B reactivation with possible fulminant hepatitis</li> <li>● Progressive multifocal leukoencephalopathy</li> </ul> </li> <li>● Hypogammaglobulinemia</li> <li>● Cytopenias</li> <li>● Severe mucocutaneous reactions</li> <li>● Bowel obstruction and perforation</li> <li>● Cardiac arrhythmias and angina</li> <li>● In pregnancy and nursing, risk vs benefit must be carefully considered</li> <li>● Avoid live vaccines with rituximab</li> </ul>	HIGH	STRONG
<p><b>5. Symptomatic/moderate-severe Sjögren’s-ILD—antifibrotic drugs<sup>b</sup>:</b> The use of antifibrotic therapy such as nintedanib should be tried as a second-line maintenance therapy either alone or in combination with immunomodulatory agents in Sjögren’s patients with progressive fibrotic ILD who are symptomatic and in whom PFTs or HRCT demonstrated moderate-severe impairment.</p>	LOW	MODERATE
<p><b>6. Rapidly progressive or exacerbating ILD—IV steroids:</b> In Sjögren’s patients with ILD who are rapidly progressive or present with acute respiratory failure, a trial of high-dose corticosteroids (such as IV methylprednisolone) is recommended. Alternative etiologies, such as infections or lymphoproliferative disorders, must be considered.</p>	INTERMEDIATE	STRONG
<p><b>7A. Symptomatic/refractory, rapidly progressive, or exacerbating ILD—cyclophosphamide:</b> In a Sjögren’s patient with ILD who has acute or subacute hypoxic respiratory failure requiring hospitalization, despite initial therapies, rituximab or cyclophosphamide should be considered in addition to high-dose corticosteroids.</p>	LOW	MODERATE
<p><b>7B. Cautions for cyclophosphamide:</b> In Sjögren’s with ILD when cyclophosphamide is considered, the significant risks must be assessed<sup>a</sup> and <i>Pneumocystis jirovecii</i> prophylaxis provided. Risk of bladder cancer can be greatly reduced with IV vs oral route.</p>	INTERMEDIATE	STRONG
<p><b>8. Drug-induced lung disease:</b> Clinicians and patients must be aware of pulmonary complications associated with medications used in Sjögren’s and related CTDs, particularly when patients are progressive or refractory to therapies. Complications may include infections, malignancies, bronchospasm, and drug-induced ILD, and may require bronchoscopy, biopsy, and/or withdrawal of the medication. In addition to medication withdrawal, corticosteroids may be used if significant symptoms and respiratory impairment are present. While the risk is low for most agents (approximately 1%), health-care providers should keep in mind that medications used to treat Sjögren’s have been associated with drug-induced ILD, including:</p> <ul style="list-style-type: none"> <li>● TNF-alpha inhibitors</li> <li>● Sulfasalazine</li> <li>● Cyclophosphamide</li> <li>● Rituximab</li> <li>● Leflunomide</li> <li>● Methotrexate</li> <li>● Sulfonamides</li> </ul>	INTERMEDIATE	STRONG

CTDs = connective tissue diseases; HRCT = high-resolution CT; ILD = interstitial lung diseases; MMF = mycophenolate mofetil; NHL = non-Hodgkin lymphoma; PFTs = pulmonary function tests; TNF = tumor necrosis factor.

<sup>a</sup>Refer to the US Food and Drug Administration label for additional information.

<sup>b</sup>The antifibrotic, nintedanib, was US Food and Drug Administration-approved for progressive fibrotic ILD just as these recommendations went to consensus. This factor, in addition to the authors’ awareness of minimal experience with antifibrotics in autoimmune disease, precluded inclusion of a Recommendation listing cautions for antifibrotics. Please consult the Physicians’ Desk Reference for potential risks and side effects.



**Figure 3 – Evaluation and management of patients with Sjögren’s who exhibit symptoms and/or physical examination signs of interstitial lung disease.** Details regarding PFTs and HRCT examinations are given in [Figure 1](#). <sup>a</sup>The dose and duration of corticosteroids in Sjögren’s-ILD is not standardized. The panel proposes a dose not to exceed 60 mg daily of prednisone with a slow taper over weeks-months. In rapidly progressive ILD, or acute respiratory failure, consider pulse dose IV corticosteroids or high-dose oral corticosteroids up to 60 mg daily of prednisone. <sup>b</sup>In patients who are not able to successfully taper off corticosteroids, or experience unfavorable adverse effects, or in patients where the length of corticosteroid therapy is predicted to be long-term, steroid-sparing agents should be initiated as maintenance therapy. <sup>c</sup>Condition rapidly deteriorates and requires hospitalization. <sup>d</sup>Nintedanib is approved by the US Food and Drug Administration for progressive fibrotic lung disease phenotype. <sup>e</sup>Calcineurin inhibitors can be considered in patients who are intolerant to the initial maintenance therapy; no evidence to support the superiority in patients who fail the first-line therapy. AZA = azathioprine; CYP = cyclophosphamide; HRCT = high-resolution CT; ILD = interstitial lung disease; MMF = mycophenolate mofetil; PFTs = pulmonary function tests; PH = pulmonary hypertension; RTX = rituximab.

history of disease progression. While evidence is unavailable on the frequency or duration of PFTs in Sjögren’s-ILD, TRG members typically perform full PFTs at the time of the initial evaluation followed by repeat assessment every 3 to 6 months, especially in the first 1 to 2 years. The frequency of subsequent testing is dictated by an individual patient’s pace of disease progression.

Many of the pharmacological interventions are based on the severity of the Sjögren’s-ILD. While no standard definition exists for staging, the panel bases severity on the pulmonary domain disease activity defined by EULAR Sjögren’s Syndrome Disease Activity Index, which uses symptoms defined by the New York Heart Association (NYHA) Functional Classification, imaging, and PFT results.<sup>36</sup> In general, moderate and severe/high disease activity is gauged as follows:

- Moderate: shortness of breath on exercise (NYHA II) or PFTs restricted to FVC between 60% and 80% predicted or DLCO between 40% and 70% predicted.

- Severe/high: shortness of breath at rest (NYHA III, IV) or PFTs with FVC < 60% predicted or DLCO < 40% predicted.

Close follow-up is required for all pharmacological treatments. Additionally, the TRG and CEP recognized the paucity of specific clinical trials dedicated to Sjögren’s-ILD as a significant and high priority research gap. The recommendations ([Table 4](#)) and the clinical pathway ([Fig 3](#)) are based on extrapolation of current guidelines and literature on non-Sjögren’s ILD, including important recent clinical trials on the potential role of antifibrotic therapies (eg, nintedanib) in CTD-ILD.<sup>37</sup>

Therapies reported for Sjögren’s-ILD along with their mechanism of action, common side effects, and level and strength of recommendation are summarized in [e-Appendix 7](#). Nintedanib, an antifibrotic, was recently approved for “progressive” fibrotic ILD phenotypes, which may also include those associated with Sjögren’s and other CTDs. Common side effects include diarrhea or loose stools and GI upset, the former commonly

**TABLE 5 ] Recommendations for Lymphoproliferative Disease in Sjögren's Patients**

Diagnosis, Evaluation, and Management for Lymphoproliferative Disease in Sjögren's Patients	Strength of Evidence	Strength of Recommendation
1. The possibility of lymphoma must be further investigated in a Sjögren's patient with symptoms such as unexplained weight loss, fevers, night sweats, and/or the presence of head and neck lymphadenopathy and/or parotitis.	HIGH	STRONG
2. All Sjögren's patients must be clinically monitored for signs and symptoms of pulmonary lymphoproliferative disorders, including lymphoma and amyloid.	HIGH	STRONG
3. In Sjögren's patients suspected of having lymphoproliferative complications, a HRCT chest scan should be considered more appropriate than a baseline CXR at the time of initial diagnosis.	INTERMEDIATE	MODERATE
4. In a Sjögren's patient with pulmonary lesions (nodules > 8 mm, consolidations, or lymphadenopathy) in whom a neoplasm is suspected, a PET scan should be considered.	INTERMEDIATE	MODERATE
5. In Sjögren's patients with lymphadenopathy, growing lung nodules, and/or progressive cystic lung disease, a biopsy should be recommended. Clinical and radiographic observation may be appropriate in select patients with incidental subcentimeter nodules, stable cysts, and isolated PET-negative subcentimeter lymphadenopathy.	INTERMEDIATE	MODERATE
6. In a Sjögren's patient in whom a neoplasm has been confirmed or suspected, multidisciplinary review involving rheumatologist/primary care physician, pulmonologist, pathologist, radiologist, and hematologist/oncologist is recommended.	LOW	STRONG

CXR = chest radiograph; HRCT = high-resolution CT.

treated with loperamide. Medication monitoring involves assessing for drug-induced liver injury with baseline and serial evaluation of transaminases and total bilirubin.

### Lymphoproliferative Disease

Six recommendations were developed on lymphoproliferative disease in Sjögren's (Table 5). Concerns for lymphoma development in Sjögren's, which ranges from 5% to 18%, are delineated in numerous papers.<sup>38-42</sup> Lymphoproliferative involvement of the lungs can present as non-resolving consolidations, focal nodules (particularly in the presence of parotitis), lymphadenopathy, and cystic lesions accompanied by adjacent nodules and may be asymptomatic.

Examination findings of importance include lymphadenopathy and parotitis, particularly when PET-avid parotitis (standardized uptake value  $\geq 4.7$ ) is accompanied by lung nodules.<sup>43,44</sup> Focal lung nodules and consolidations are present in approximately one-third of Sjögren's patients with pulmonary lymphoma vs 3% without lymphoma.<sup>43</sup> Multiple sub-centimeter lung nodules accompanied by adjacent cystic lesions (typically < 1 cm in size in peribronchovascular and subpleural distributions) may further indicate a MALT lymphoma with focal amyloidosis.<sup>45</sup> Presence of ILD does not appear to indicate a higher risk for lymphoma.<sup>43</sup>

Sjögren's patients are at a higher risk for both non-neoplastic (eg, nodular lymphoid hyperplasia, follicular bronchiolitis, lymphoid interstitial pneumonia) and neoplastic monoclonal lymphoproliferative disorders. Approximately 6% of Sjögren's-associated lymphomas may directly involve the lungs and are most commonly of the MALT type, manifesting as focal nodules, consolidations, and/or masses.<sup>32,43,46</sup> Cystic lesions in the lungs due to amyloid involvement can be associated with Sjögren's, as well as MALT lymphomas and are highly suggestive of Sjögren's.<sup>45</sup> Given the prevalence and increased risk for lymphoproliferative disorders, active clinical surveillance for pulmonary lymphoproliferative complications in Sjögren's is recommended, especially for Sjögren's patients who are at high risk for lymphoma. Known risk factors include persistent salivary gland swelling, vasculitis and palpable purpura, lymphadenopathy, laboratory findings of low complements (C3 or C4), monoclonal gammopathy, cryoglobulins, anti-SSA (or Ro) and/or anti-SSB (or La), rheumatoid factor, anemia, leukopenia, lymphopenia, neutropenia, thrombocytopenia, elevated serum beta<sub>2</sub>-microglobulin, and/or B-cell activating factor.<sup>41</sup>

HRCT and PET scan abnormalities are common in Sjögren's with or without lymphomatous complications.<sup>7,43</sup> Multidisciplinary review with oncology can aid in diagnosis and management.

MALT lymphomas as well as cystic lung disease associated with Sjögren's often have an indolent course and can be managed conservatively.<sup>27,28,47</sup> Frequency of HRCT monitoring will be variable based on cyst size/appearance and clinical presentation. Accessibility to PET, costs, and insurance coverage should be considered. Many US clinicians may have difficulty obtaining payor authorization for a PET scan if it is not ordered by an oncologist or if malignancy is not yet diagnosed by histopathologic confirmation.

## Conclusions

Pulmonary involvement due to Sjögren's is common and frequently involves upper and lower airway disease, parenchymal or interstitial lung disease, and associated lymphoproliferative disease. A common theme for all of these recommendations, and endorsed by the TRG, is the need for a multidisciplinary approach in the care of Sjögren's patients with suspected or confirmed pulmonary complications, including a rheumatologist, primary care physician, pulmonologist, pathologist, radiologist, and, when appropriate, an oncologist.

While most of the evidence would be considered of low quality due to the lack of randomized, placebo-controlled clinical trials, our recommendations and strength of the recommendations incorporate Sjögren's-specific expertise in pulmonology, rheumatology, and hematology/oncology. Thirty-five recommendations were rated as strong, indicating the extent of agreement that these recommendations reflect best practice, while 11 were rated as moderate and six as weak. The lowest level of agreement for any recommendation was 79% for the weak recommendation to consider performing PFTs to detect underlying pulmonary manifestations in asymptomatic Sjögren's patients. CEP comments primarily cited the burden and expense of obtaining PFTs as well as an improbability of non-pulmonologists ordering such tests due to inadequate awareness of and appreciation for pulmonary manifestations in Sjögren's. Overall, the CEP provided a high level of agreement for the recommendations and strength of the recommendations, with 76 of the 102 questions provided for voting receiving higher than 98% agreement.

Clinical practice guidelines for pulmonary manifestations in Sjögren's may improve early identification, evaluation, and uniformity of care by primary care physicians, rheumatologists, and pulmonologists. Full clinical

rationales and references developed by the TRG for these recommendations may be viewed in [e-Appendix 5](#). The guidelines process also has led to identification of high priorities for future research ([e-Appendix 8](#)). These priorities include epidemiological and risk analyses, blood-based and noninvasive biomarkers, quantitative imaging tools, optimal frequency of repeat PFTs and HRCT testing for each pattern of pulmonary disease, studies on etiology and treatment, and specifically on antifibrotics for Sjögren's-ILD.

## Acknowledgments

**Financial/nonfinancial disclosures:** The authors have reported to *CHEST* the following: E. W. S. C. reports a relationship with AbbVie, BMS, Viela Bio, and Rheos Medicines. K. D. reports a relationship with AbbVie, AstraZeneca, Amgen, Celgene, Pharmacyclics, Adaptive, Seattle Genetics, Kite, Janssen, and MorphoSys. S. E. C. reports a relationship with Novartis and Roche. N. L. C. reports a relationship with BMS, Gilead, and Medtronic. R. H. S. reports National Institutes of Health [Grant GM104938] that provides partial salary support. None declared (A. S. L., K. M. H., N. G., D. E. T., T. M., K. U., R. M., M. M.).

**Role of sponsors:** The sponsor had no role in the design of the study, the collection and analysis of the data, or the preparation of the manuscript.

**\*Consensus Expert Panel (CEP) Members:** Rheumatology: Senada Arabelovic, DO, Assistant Professor of Medicine, Division of Rheumatology, Tufts University School of Medicine; Alan Baer, MD, Director, Jerome L. Greene Sjögren's Syndrome Clinic, Professor of Medicine, Johns Hopkins University School of Medicine; Matthew C. Baker, MD, MS, Clinical Chief, Division of Immunology and Rheumatology, Co-Director, Stanford Multidisciplinary Sarcoidosis Program, Clinical Assistant Professor, Department of Medicine, Stanford University; Donald Bloch, MD, Associate Professor of Medicine, Harvard Medical School, Director, Sjögren's Syndrome Clinic, Massachusetts General Hospital; Philip Cohen, MD, Professor of Medicine and Microbiology/Immunology (Emeritus), Lewis Katz School of Medicine at Temple University; Stamatina J. Danielides, MD, Assistant Professor, Department of Internal Medicine, Division of Rheumatology, Allergy and Immunology, Virginia Commonwealth University School of Medicine; Maria Danila, MD, MSc, MSPH, Associate Professor, Division of Clinical Immunology and Rheumatology, University of Alabama at Birmingham; Paul F. Dellaripa, MD, Associate Professor, Harvard Medical School, Division of Rheumatology, Immunology and Allergy, Brigham and Women's Hospital; Theresa Lawrence Ford, MD, Chair, Sjögren's Foundation Medical and Scientific Advisors, Medical Director, North Georgia Rheumatology Group; Robert I. Fox, MD, PhD, Scripps Memorial Hospital and Research Center; Thomas Grader-Beck, MD, Assistant Professor, Johns Hopkins School of Medicine; Chadwick R. Johr, MD, Co-Director, Penn Sjögren's Center, Associate Program Director, Combined Internal Medicine and Pediatrics Residency Program, Assistant Professor of Clinical Medicine, Division of Rheumatology, Perelman School of Medicine at the University of Pennsylvania; Stuart Kassan, MD, Distinguished Clinical Professor of Medicine, University of Colorado, Denver School of Medicine; Tamiko Katsumoto, MD, Clinical Assistant Professor, Stanford University; Apostolos Kontzias, MD, Associate Professor of Clinical Medicine, Stony Brook Medicine; Kirsten Koons, MD, Chief Resident, Department of Internal Medicine, University of Virginia; Vasileios C. Kytaris, MD, Assistant Professor of Medicine, Harvard Medical School Director, Rheumatology Training Program Beth Israel Deaconess Medical Center; Janet Lewis, MD, Associate Professor Medicine, Division of Rheumatology, University of Virginia; Scott M. Lieberman, MD, PhD, Associate Professor of



Pediatrics, Division of Rheumatology, Allergy and Immunology, Carver College of Medicine, University of Iowa; Sara S. McCoy, MD, MS, Assistant Professor, Department of Medicine, Division of Rheumatology, University of Wisconsin – Madison; Timothy Niewold, MD, Judith and Stewart Colton Professor of Medicine and Pathology, Director, Colton Center for Autoimmunity, NYU Grossman School of Medicine; Ghaith Noaish, MD, Associate Professor of Medicine, Division of Allergy, Clinical Immunology, & Rheumatology, Department of Internal Medicine, The University of Kansas Medical Center; Thomas G. Osborn, MD, Rheumatology Department, Mayo Clinic, Rochester, MN; Scharless Culpepper Pace, MD, Faculty, University of Miami, Division of Rheumatology; Ruben Peredo-Wende, MD, Assistant Professor, Chief of the Division of Rheumatology, Director of the Rheumatology Fellowship Program, Albany Medical College; Stanley Pillemer, MD, President, American Biopharma Corporation; W. Neal Roberts Jr, MD, Professor of Medicine, University of Kentucky; Elliot Rosenstein, MD, Professor of Medicine, Sidney Kimmel Medical College at Thomas Jefferson University, Director, Institute for Rheumatic & Autoimmune Diseases, Overlook Medical Center, Atlantic Health System; Amit Sachdev, MD, Assistant Professor, Director of the Division of Neuromuscular Medicine, Michigan State University; Nora Sandorf, MD, Associate Professor of Clinical Medicine, Perelman School of Medicine at the University of Pennsylvania; Barbara Segal, MD, Rheumatologist, Inland Hospital Saint Paul, MN; Chokkalingam Siva, MD, Associate Professor, Fellowship Program Director, University of Missouri School of Medicine; Daniel Small, MD, MMSc, Chair, Department of Rheumatology, Mayo Clinic Healthcare System, Mayo Franciscan, La Crosse, WI; Robert F. Spiera, MD, Director, Scleroderma and Vasculitis Program, Hospital for Special Surgery, Attending Rheumatologist, Hospital for Special Surgery, Professor of Clinical Medicine, Weill Cornell Medical College, Attending Physician, NewYork-Presbyterian Hospital, Weill Cornell Medical Center; James Topilow, MD, Resident, Department of Internal Medicine, University of Virginia; Edward L. Treadwell, MD, Professor of Medicine/ Rheumatology-Immunology, Department of Internal Medicine, Brody School of Medicine-East Carolina University; Frederick B. Vivino, MD, Chief, Rheumatology, Penn Presbyterian Medical Center, Director, Penn Sjögren's Center, Professor of Clinical Medicine, Perelman School of Medicine at the University of Pennsylvania; Elizabeth Volkmann, MD, MS, Assistant Professor, Co-Director, CTD-ILD Program, Division of Rheumatology, Department of Medicine, University of California, Los Angeles, CA; Daniel J. Wallace, MD, Associate Director, Rheumatology Fellowship Program, Board of Governors, Cedars-Sinai Medical Center, Professor of Medicine, Cedars-Sinai Medical Center, David Geffen School of Medicine Center at UCLA, in affiliation with Attune Health; Scott Zashin, MD, Dallas Rheumatology, Presbyterian Hospitals, and University of Texas Southwestern Medical School, Dallas, TX. Pulmonology: Rahul Gupta Argula, MBBS, MPH, Associate Professor of Medicine, Director, Pulmonary Vascular Disease Clinic Medical Director, Respiratory Therapy Services, Division of Pulmonary, Allergy, Critical Care and Sleep Medicine, Medical University of South Carolina; Joseph Barney, MD, MSPH, Associate Professor, Pulmonary and Critical Care Medicine, University of Alabama at Birmingham; Ryan Boente, MD, Assistant Professor of Clinical Medicine, Associate Fellowship Program Director, Division of Pulmonary, Critical Care, Allergy, and Occupational Medicine, Indiana University School of Medicine; Charles D. Burger, MD, Professor of Medicine, Consultant, Division of Pulmonary Medicine, Department of Medicine, Mayo Clinic, Jacksonville, FL; Gregory P. Downey, MD, Professor, Executive Vice President, Academic Affairs, Department of Medicine, Division of Pulmonary, Critical Care & Sleep Medicine, National Jewish Health; James Gagermeier, MD, Associate Professor, Pulmonary and Critical Care Medicine, Medical Director, Pulmonary Medicine, Loyola University Medical Center; Richard A. Helmers, MD, Pulmonologist, Mayo Clinic Health System, Eau Claire, WI; Justin C. Hewlett, MD, Assistant Professor of Medicine, Department of Medicine, Division of Allergy, Pulmonary and Critical Care Medicine, Vanderbilt University Medical Center; Rebecca C. Keith, MD, Assistant Professor, Department of Medicine, Division of Pulmonary, Critical Care & Sleep

Medicine, Interstitial Lung Disease Program, Autoimmune Lung Center, National Jewish Health; Matthew Koslow, MD, Assistant Professor, Department of Medicine, Division of Pulmonary, Critical Care & Sleep Medicine, National Jewish Health; Robert Kotloff, MD, Professor of Clinical Medicine, Director, Harron Lung Centers, University of Pennsylvania Health System; Rachana Krishna, MD, Assistant Professor, College of Medicine, Medical University of South Carolina; Tracy R. Luckhardt, MD, MS, Associate Professor, Pulmonary, Allergy and Critical Care Division, University of Alabama at Birmingham; Keith Robinson, MD, MS, Medical Director, Syneus Health, Miami/Fort Lauderdale, FL; Jay H. Ryu, MD, Professor of Medicine, Consultant, Division of Pulmonary and Critical Care Medicine, Department of Internal Medicine, Mayo Clinic, Rochester, MN; Adrian Shifren, MD, Associate Professor, Medicine, Pulmonary and Critical Care Medicine, Director, Rare Lung Diseases Clinic, Director, Respiratory Therapy, Washington University School of Medicine in St. Louis; Gerald Staton Jr, MD, Professor Emeritus of Medicine, Pulmonary and Critical Care Medicine, Emory School of Medicine; Jeff Swigris, DO, MS, Professor of Medicine, Director, Interstitial Lung Disease Program, National Jewish Health; Robert Vassallo, MD, Professor of Medicine, Consultant, Division of Pulmonary and Critical Care Medicine, Department of Internal Medicine, Consultant, Department of Physiology & Biomedical Engineering, Mayo Clinic, Rochester, MN; Kristen L. Veraldi, MD, PhD, University of Pittsburgh School of Medicine, Division of Pulmonary, Allergy and Critical Care Medicine, Simmons Center for Interstitial Lung Disease at UPMC, VA Pittsburgh Healthcare System; Robert W. Ward, MD, Pulmonologist, University of North Carolina Health, Carolina Lung and Sleep at Pardee, Hendersonville, NC. Patients & Family of Patients: Evelyn J Bromet, PhD, Distinguished Professor, Department of Psychiatry, Stony Brook University; Jeanne Dale, Winetka, IL; Judith A. Furlong, MD, Family Medicine, ProMedica Physicians Family Medicine; Kerry L. Neall, MD, Emergency Medicine, Orlando Health, South Lake Hospital, Orlando, FL; Lynn M. Petruzzi, RN, MSN, Formerly, West Shore Surgery Center, Mechanicsburg, PA; Sarah Schafer, MD, Public Health and General Preventive Medicine, Oakland, CA; Heidi Kukla, RN, BSN, CCRN, Critical Care, Elliot Hospital, Manchester, NH.

**Other contributions:** The authors extend special thanks to former TRG participants: Herbert S. B. Baraf, MD, Arthritis and Rheumatism Associates, P.C., and George Washington University and University of Maryland; and Joseph P. Lynch, MD, Department of Medicine, David Geffen School of Medicine at UCLA; Rebecca Landau, MLS, Librarian, and formerly, Health Sciences Library, Penn Presbyterian Medical Center; the American Society of Clinical Oncology and especially Patricia Hurley, MSc, CPHQ, for identifying a hematologist/oncologist for the TRG and providing methodology materials; and the American College of Rheumatology and especially Amy Miller Turner for guidance on methodology and guidelines review.

**Additional information:** The e-Appendixes can be found in the Supplemental Materials section of the online article. A full list of references is available in e-Appendix 9.

## References

1. Vivino FB. Sjögren's syndrome: clinical aspects. *Clin Immunol*. 2017;182:48-54.
2. Lackner A, Ficjan A, Stradner MH, et al. It's more than dryness and fatigue: the patient perspective on health-related quality of life in primary Sjögren's syndrome—a qualitative study. *PLoS One*. 2017;12(2):e0172056.
3. Helmick CG, Felson DT, Lawrence RC, et al. Estimates of the prevalence of arthritis and other rheumatic conditions in the United States. Part I. *Arthritis Rheum*. 2008;58(1):15-25.
4. Patel R, Shahane A. The epidemiology of Sjögren's syndrome. *Clin Epidemiol*. 2014;6:247-255.
5. Whitacre CC. Sex differences in autoimmune disease. *Nat Immunol*. 2001;2(9):777-780.

6. Ramos-Casals M, Brito- Zerón P, Seror R, et al. Characterization of systemic disease in primary Sjögren's syndrome: EULAR-SS Task Force recommendations for articular, cutaneous, pulmonary and renal involvements. *Rheumatology (Oxford)*. 2015;54(12):2230-2238.
7. Uffman M, Kiener HP, Bankier AA, Baldt MM, Zontsich T, Herold CJ. Lung manifestation in asymptomatic patients with primary Sjogren syndrome: assessment with high resolution CT and pulmonary function tests. *J Thorac Imaging*. 2001;16(4):282-289.
8. Nannini C, Jebakumar AJ, Crowson CS, Ryu JH, Matteson EL. Primary Sjögren's syndrome 1976-2005 and associated interstitial lung disease: a population-based study of incidence and mortality. *BMJ Open*. 2013;3(11):e003569.
9. Lohrmann C, Uhl M, Warnatz K, et al. High-resolution CT imaging of the lung for patients with primary Sjögren's syndrome. *Eur J Radiol*. 2004;52(2):137-143.
10. Manfredi A, Sebastiani M, Cerri S, et al. Prevalence and characterization of non-sicca onset primary Sjögren syndrome with interstitial lung involvement. *Clin Rheumatol*. 2017;36(6):1261-1268.
11. Constantopoulos SH, Papadimitriou CS, Moutsopoulos HM. Respiratory manifestations in primary Sjögren's syndrome. A clinical, functional, and histologic study. *Chest*. 1985;88(2):226-229.
12. American College of Rheumatology policy and procedure manual for clinical practice guidelines. American College of Rheumatology website. [https://www.rheumatology.org/Portals/0/Files/ACR%20Guideline%20Manual\\_Appendices\\_updated%202015.pdf](https://www.rheumatology.org/Portals/0/Files/ACR%20Guideline%20Manual_Appendices_updated%202015.pdf). Accessed January 6, 2016.
13. Carsons SE, Vivino FB, Parke A, et al. Treatment guidelines for rheumatologic manifestations of Sjögren's: use of biologics, management of fatigue & inflammatory musculoskeletal pain. *Arthritis Care Res (Hoboken)*. 2017;69(4):517-527.
14. Somerfield MR, Bohlke K, Browman GP, et al. Innovations in American Society of Clinical Oncology Practice Guideline Development. *J Clin Oncol*. 2016;34(26):3213-3220.
15. Vitali C, Bombardieri S, Jonsson R, et al. Classification criteria for Sjögren's syndrome: a revised version of the European criteria proposed by the American-European Consensus Group. *Ann Rheum Dis*. 2002;61(6):554-558.
16. Shiboski CH, Shiboski SC, Seror R, et al. 2016 American College of Rheumatology/European League Against Rheumatism Classification Criteria for Primary Sjögren's syndrome: a consensus and data-driven methodology involving three international patient cohorts. *Arthritis Rheumatol*. 2017;76(1):9-16.
17. Raghu G, Remy-Jardin M, Myers JL, et al. Diagnosis of idiopathic pulmonary fibrosis. An official ATS/ERS/JRS/ALAT clinical practice guideline. *Am J Respir Crit Care Med*. 2018;198(5):e44-e68.
18. Lynch DA, Sverzellati N, Travis WD, et al. Diagnostic criteria for idiopathic pulmonary fibrosis: a Fleischner Society White Paper. *Lancet Respir Med*. 2018;6(2):138-153.
19. Kelly C, Gardiner P, Pal B, Griffiths I. Lung function in primary Sjögren's syndrome: a cross sectional and longitudinal study. *Thorax*. 1991;46(3):180-183.
20. Doğru G, Balkarli A, Dogru A. Chronic non-productive cough in patients with primary Sjögren's syndrome. *Arch Rheumatol*. 2017;32(4):303-308.
21. Koslow M, Kivity S, Vishnevskia-Dai V, Ben-Dov I. Unexplained cough: it is time to rule out Sjögren's syndrome. *Clin Rheumatol*. 2018;37(5):1215-1222.
22. Irwin RS, French CL, Chang AB, Altman KW; CHEST Expert Cough Panel. Classification of cough as a symptom in adults and management algorithms: CHEST Guideline and Expert Panel Report. *Chest*. 2018;153(1):196-209.
23. Nakanishi M, Fukuoka J, Tanaka T, et al. Small airway disease associated with Sjögren's syndrome: clinico-pathological correlations. *Respir Med*. 2011;105:1931-1938.
24. Ramos-Casals M, Brito- Zerón P, Bombardieri S, et al. EULAR recommendations for the management of Sjögren's syndrome with topical and systemic therapies. *Ann Rheum Dis*. 2020;79(1):3-18.
25. National Asthma Education and Prevention Program. Expert Panel Report 3 (EPR-3): Guidelines for the Diagnosis and Management of Asthma-Summary Report 2007. *J Allergy Clin Immunol*. 2007;120(suppl 5):S94-S138.
26. Qaseem A, Wilt TJ, Weinberger SE, et al. Diagnosis and management of stable chronic obstructive pulmonary disease: a clinical practice guideline update from the American College of Physicians, American College of Chest Physicians, American Thoracic Society, and European Respiratory Society. *Ann Intern Med*. 2011;155(3):179-191.
27. Martinez-Balzano CD, Touray S, Kopec S. Cystic lung disease among patients with Sjogren syndrome: frequency, natural history, and associated risk factors. *Chest*. 2016;150(3):631-639.
28. Lechtman S, Debray MP, Crestani B, et al. Cystic lung disease in Sjögren's syndrome: an observational study. *Joint Bone Spine*. 2017;84(3):317-321.
29. Baqir M, Kluka EM, Aubry MC, et al. Amyloid-associated cystic lung disease in primary Sjogren's syndrome. *Respir Med*. 2013;107(4):616-621.
30. Parambil JG, Myers JL, Lindell RM, Matteson EL, Ryu JH. Interstitial lung disease in primary Sjogren syndrome. *Chest*. 2006;130(5):1489-1495.
31. Zhang T, Yuan F, Xu L, Sun W, Liu L, Xue J. Characteristics of patients with primary Sjögren's syndrome associated interstitial lung disease and relevant features of disease progression. *Clin Rheumatol*. 2020;39(5):1561-1568.
32. Ito I, Nagai S, Kitachi M, et al. Pulmonary manifestations of primary Sjogren's syndrome: a clinical, radiologic, and pathologic study. *Am J Respir Crit Care Med*. 2005;171(6):632-638.
33. Yeh JJ, Chen HJ, Li TC, et al. Association between Sjögren's syndrome and respiratory failure: put airway, interstitia, and vessels close together: a national cohort study. *PLoS One*. 2014;9(10):e110783.
34. Taouli B, Brauner MW, Mourey I, Lemouchi D, Grenier PA. Thin-section chest CT findings of primary Sjögren's syndrome: correlation with pulmonary function. *Eur Radiol*. 2002;12(6):1504-1511.
35. Salaffi F, Manganelli P, Carotti M, et al. A longitudinal study of pulmonary involvement in primary Sjögren's syndrome: relationship between alveolitis and subsequent lung changes on high-resolution computed tomography. *Br J Rheumatol*. 1998;37(3):263-269.
36. Seror R, Bowman SJ, Brito-Zeron P, et al. EULAR Sjögren's syndrome disease activity index (ESSDAI): a user guide. *RMD Open*. 2015;1(1):e000022.
37. Flaherty KR, Wells AU, Cottin V, et al. Nintedanib in progressive fibrosing interstitial lung diseases. *N Engl J Med*. 2019;381(18):1718-1727.
38. Theander E, Henriksson G, Ljungberg O, Mandl T, Manthorpe R, Jacobsson LT. Lymphoma and other malignancies in primary Sjögren's syndrome: a cohort study on cancer incidence and lymphoma predictors. *Ann Rheum Dis*. 2006;65(6):796-803.
39. Ekström Smedby KE, Vajdic CM, Falster M, et al. Autoimmune disorders and risk of non-Hodgkin lymphoma subtypes: a pooled analysis within the InterLymph Consortium. *Blood*. 2008;111(8):4029-4038.
40. Voulgarelis M, Ziakas PD, Papageorgiou A, Baimpa E, Tzioufas AG, Moutsopoulos HM. Prognosis and outcome of non-Hodgkin lymphoma in primary Sjogren syndrome. *Medicine (Baltimore)*. 2012;91(1):1-9.
41. Brito-Zerón P, Kostov B, Fraile G, et al. Characterization and risk estimate of cancer in patients with primary Sjögren syndrome. *J Hematol Oncol*. 2017;10(1):90.
42. Vasaitis L, Nordmark G, Theander E, et al. Comparison of patients with and without pre-existing lymphoma at diagnosis of primary Sjögren's syndrome. *Scand J Rheumatol*. 2019;48(3):207-212.

43. Keraen J, Blanc E, Besson FL, et al. Usefulness of <sup>18</sup>F-labeled fluorodeoxyglucose-positron emission tomography for the diagnosis of lymphoma in primary Sjögren's syndrome. *Arthritis Rheumatol*. 2019;71(7):1147-1157.
44. Fragkioudaki S, Mavragani CP, Moutsopoulos HM. Predicting the risk for lymphoma development in Sjogren syndrome: an easy tool for clinical use. *Medicine (Baltimore)*. 2016;95(25):e3766.
45. Zamora AC, White DB, Sykes AM, et al. Amyloid-associated cystic lung disease. *Chest*. 2016;149(5):1223-1233.
46. Voulgarelis M, Dafni UG, Isenberg DA, Moutsopoulos HM. Malignant lymphoma in primary Sjögren's syndrome: a multicenter, retrospective, clinical study by the European Concerted Action on Sjögren's Syndrome. *Arthritis Rheum*. 1999;42(8):1765-1772.
47. Kim JH, Lee SH, Park J, et al. Primary pulmonary non-Hodgkin's lymphoma. *Jpn J Clin Oncol*. 2004;34(9):510-514.