

UC Irvine

UC Irvine Previously Published Works

Title

Language-general and -specific white matter microstructural bases for reading

Permalink

<https://escholarship.org/uc/item/0t87q6kj>

Authors

Zhang, Mingxia
Chen, Chuansheng
Xue, Gui
et al.

Publication Date

2014-09-01

DOI

10.1016/j.neuroimage.2014.04.080

Peer reviewed

Published in final edited form as:

Neuroimage. 2014 September ; 98: 435–441. doi:10.1016/j.neuroimage.2014.04.080.

Language-general and -specific white matter microstructural bases for reading

Mingxia Zhang^{1,*}, Chuansheng Chen², Gui Xue¹, Zhong-lin Lu³, Leilei Mei², Hongli Xue¹, Miao Wei⁴, Qinghua He⁴, Jin Li¹, and Qi Dong¹

¹National Key Laboratory of Cognitive Neuroscience and Learning, Beijing Normal University, Beijing, 100875, China

²Department of Psychology and Social Behavior, University of California, Irvine, CA 92697, USA

³Center for Cognitive and Behavioral Brain Imaging, Department of Psychology, Ohio State University, Columbus, OH 43210, USA

⁴Department of Psychology, University of Southern California, Los Angeles, CA 90089, USA

Abstract

In the past decade, several studies have investigated language-general and -specific brain regions for reading. However, very limited research has examined the white matter that connects these cortical regions. By using diffusion tensor imaging (DTI), the current study investigated the common and divergent relationship between white matter integrity indexed by fractional anisotropy (FA) and native language reading abilities in 89 Chinese and 93 English speakers. Conjunction analysis revealed that for both groups, reading ability was associated with the FA of seven white matter fiber bundles in two main anatomical locations in the left hemisphere: the dorsal corona radiate/corpus callosum/superior longitudinal fasciculus which might be for phonological access, and the ventral uncinate fasciculus/external capsule/inferior fronto-occipital fasciculus which might be for semantic processing. Contrast analysis showed that the FA of the left temporal part of superior longitudinal fasciculus contributed more to reading in English than in Chinese, which is consistent with the notion that this tract is involved in grapheme-to-phoneme conversion for alphabetic language reading. These results are the first evidence of language-general and -specific white matter microstructural bases for reading.

Introduction

There are over 6000 languages in the world. It is believed that an unimpaired person can theoretically learn any language because humans are equipped with universal mechanisms for language acquisition. Similarly, reading any language should involve similar cognitive

© 2014 Elsevier Inc. All rights reserved.

*Correspondence should be sent to: Mingxia Zhang: zhangmingxia1002@163.com, Phone: 86-10-58807615, Fax: 86-10-58807615.

Publisher's Disclaimer: This is a PDF file of an unedited manuscript that has been accepted for publication. As a service to our customers we are providing this early version of the manuscript. The manuscript will undergo copyediting, typesetting, and review of the resulting proof before it is published in its final citable form. Please note that during the production process errors may be discovered which could affect the content, and all legal disclaimers that apply to the journal pertain.

processes in the brain (Yang et al., 2009; Yang, 2013), namely, to integrate signals from visual, phonological, semantic and other linguistic processing (Price, 2000; Schlaggar and McCandliss, 2007; Turkeltaub et al., 2002; Vigneau et al., 2006; Wandell, 2011). Given the vast differences in writing systems (e.g., alphabetic and logographic languages), however, reading different languages may require unique neural circuits to map visual materials to sounds (Perfetti et al., 2005; Siok et al., 2008; Siok et al., 2004).

In the past decade, several studies have identified common cortical regions for reading across different languages as well as cortical regions that are only activated by alphabetic or logographic language reading. For example, the left occipitotemporal region, anterior part of superior temporal gyrus and superior posterior part of inferior frontal gyrus were found to be involved in reading different languages (Bolger et al., 2005; Thuy et al., 2004; Zhang et al., 2013a). These regions might be for language-general visual analysis, phonological identification of word form and semantic processing (Bolger et al., 2005). The left middle frontal cortex and the right occipitotemporal cortex are involved specifically in logographic Chinese reading whereas the left posterior part of superior temporal gyrus and temporoparietal area are relevant to alphabetic languages reading (Bolger et al., 2005; Sakurai et al., 2000; Siok et al., 2008; Tan et al., 2005). The former regions might be recruited because of the greater visual analysis of spatial information when reading logographic Chinese and the latter regions might be responsible for grapheme-to-phoneme conversion which is more important for reading alphabetic languages.

Previous cross-linguistic imaging research on reading has relied almost exclusively on functional MRI studies. Little attention has been paid to white matter that connects the cortical regions. Intriguingly, several recent studies have discovered that white matter properties could be the efficient neural markers for reading abilities (for a reviews see Ben-Shachar et al., 2007; Vandermosten et al., 2012). Using DTI, studies revealed significant associations between reading skills and white matter integrity, mostly indexed by fractional anisotropy (FA) of superior longitudinal fasciculus, corona radiate and inferior fronto-occipital fasciculus (temporo-parietal region and fronto-temporal regions) (Beaulieu et al., 2005; Deutsch et al., 2005; Klingberg et al., 2000; Niogi and McCandliss, 2006; Steinbrink et al., 2008; Yeatman et al., 2011) as well as other white matter tracts (e.g., corpus callosum) (Cummine and Boliek, 2013; Dougherty et al., 2007; Frye et al., 2008; Lebel et al., 2013) in the left hemisphere.

These findings of FA-reading ability relationships have important implications for understanding the white matter pathway for reading. However, all these studies focused on native readers of alphabetic languages. Only one study tested the relationship between white matter maturation and Chinese reading and revealed an association between reading and FA of the internal capsule (Qiu et al., 2008), which was recently confirmed by a study of English readers (Lebel et al., 2013). Thus far, no study has directly evaluated the relationship between white matter connectivity and reading abilities across different writing systems.

Using tract-based spatial statistics (TBSS) of DTI, we investigated how white matter connectivity (indexed by FA) was associated with individual differences in native language

reading abilities in alphabetic English and logographic Chinese speakers. To directly compare the FA-reading ability relationship between the two groups, we recruited two samples of college students, administered reading tests with the same format and conducted DTI scans. Conjunction and contrast analyses were conducted to identify the white matter connections that were associated with reading performance for both English and Chinese readers or for either of them.

Method

Subjects

Data for this study came from two samples. The American sample included 93 college students (age range: 18-30 years, mean age=20.8, SD=2.2; 54 females and 39 males) from the University of California, Irvine and the University of Southern California. The Chinese sample included 89 college students (age range: 19-25 years, mean age=21.7, SD=1.7; 45 females and 44 males) from Beijing Normal University. Because second-language is a requirement in secondary schools and colleges in both China and the United States of America, all students had learned a second language to some level of proficiency. For the American sample, because their second language varied greatly (e.g., Spanish, Chinese, Armenian, Russian, and French), we did not test their second language reading level. Based on participants' self-report, some participants (n=12) viewed their fluency in their second-language so low that they considered themselves as monolingual, whereas the remaining participants (n = 81) had a moderate reading level. The average second language reading level was 3.3 on a 7 point scale (1: only a little; 7: native-level proficiency). For the Chinese sample, all participants learned English as their second language starting in elementary school and passed the college entrance examination of English. We used a standardized English reading ability test (TOWRE-SWE, see the detailed description of this test in the section of Behavioral assessment) to measure the second language reading level of Chinese subjects. Their mean score was 72.8 (approximately equivalent to the level of native English-speaking 5th graders (Torgesen, 1999)). All subjects had normal or corrected-to-normal vision, with no previous history of neurological or psychiatric disease and were strongly right-handed as judged by Snyder and Harris's Handedness Inventory (Snyder PJ, 1993). Informed written consent was obtained from the subjects before the experiment. This study was approved by the IRBs of the University of California, Irvine, the University of Southern California, and the National Key Laboratory of Cognitive Neuroscience and Learning at Beijing Normal University.

Behavioral assessment

English reading ability of the American sample was assessed using the Sight Word Efficiency subtest (SWE, Form A) of the Test of Word Reading Efficiency (TOWRE), a nationally normed measure of word reading accuracy and fluency in America for individuals from 6 to 24 years of age (Torgesen, 1999). (The other subtest of TOWRE, Pseudoword Decoding Efficiency [PDE], was not used because there are no pseudowords [pronounceable but illegal words] in logographic Chinese). Reading ability was indexed by the number of printed real words (out of 104 words) that were accurately read within 45 seconds. Test items were arranged in order of difficulty from easy to difficult items. For subjects who

accurately read all 104 items in less than 45s, the reading scores were calculated as $(104/\text{time in s}) \times 45$ (i.e., estimated number of words that would have been read if they used all 45s).

Native reading ability of Chinese subjects was measured by the Chinese Character Reading Efficiency Test (CCRET). This test was developed in the format of TOWRE-SWE. There are also 104 items in the CCRET selected from the Chinese character psycholinguistic norms (Liu et al., 2007) with word frequency ranging from 4 to 5636 (mean=196), number of strokes ranging from 2 to 14 (mean =7.3), and number of units ranging from 1 to 5 (mean= 2.4). Reading ability was indexed by the number of printed Chinese characters that were accurately read in 45 seconds. Test items were also arranged in order of difficulty from easy to difficult items. Again, for subjects who accurately read all 104 items in less than 45s, the reading scores were calculated as $(104/\text{time in s}) \times 45$ (i.e., estimated number of words that would have been read if they used all 45s). Both tests (TOWRE-SWE and CCRET) have been used in our previous studies that examined the structure and resting state functional connectivity correlates of reading skills (Zhang et al., 2013a; Zhang et al., 2013b). Because American and Chinese subjects took reading tests in their native languages, their scores could not be directly compared. Instead, we used the standardized reading scores within each sample for correlational analyses with the DTI data.

To identify reading-specific correlates, a non-verbal reasoning (or intelligence) test, Raven's Advanced Progressive Matrices, was also used in the current study and regressed out in the group-level of DTI data analysis. This test has been widely used in previous studies (e.g., Zhu, 2010). Table 1 shows subjects' basic demographic information and test scores.

DTI data acquisition

DTI data of the Chinese and American subjects were acquired in the Brain Imaging Center at Beijing Normal University and the Dana and Dornsife Cognitive Brain Imaging Center at University of Southern California, respectively. Both samples were scanned with the same type of scanner (3.0T Siemens Magnetom Trio with TIM) equipped with a standard head coil. Data collection from both samples was performed for about 11 min using echo-planar spin echo, with the same imaging parameters: 70 axial slices, slice thickness = 2 mm with no interslice gap, TE = 100 ms, TR =10000 ms, 64 diffusion directions with $b = 1000 \text{ s/mm}^2$, and an additional image without diffusion weighting (i.e., $b = 0 \text{ s/mm}^2$), acquisition matrix = 128×128 , FOV = $256 \text{ mm} \times 256 \text{ mm}$, average = 1, parallel imaging = GRAPPA (acceleration factor 2).

DTI data analysis

Data preprocessing—Image preprocessing was carried out using FSL (version 4.1.8) (FMRIB Software Library, <http://www.fmrib.ox.ac.uk/fsl>). First, diffusion images were corrected for eddy-current distortion and head motion (Jenkinson and Smith, 2001). B-vectors were also rotated according to the log file generated from the eddy-current correction procedure. Then, a binary brain mask (Smith, 2002) was extracted from the no-diffusion image for subsequent diffusion tensor fitting. Finally, using dtifit, original diffusion images: V1 (first eigenvector), V2 (second eigenvector), V3 (third eigenvector),

L1 (first eigenvalue), L2 (second eigenvalue), L3 (third eigenvalue), FA, MD (mean diffusivity), and S0 (raw T2 signal with no diffusion weighting) were created in the brain mask by fitting a tensor model to the corrected data (Behrens et al., 2003). The preprocessing steps were repeated for each subject.

Tract-based spatial statistics (TBSS)—FA images from the preprocessing step were then analyzed by the standard protocol of TBSS (v1.2) (Smith et al., 2006), which is part of FSL. Using the TBSS script, we first eroded the FA images slightly and zeroed the end slices (to remove likely outliers from the diffusion tensor fitting). Then, the FA data were aligned into a $1 \times 1 \times 1$ mm standard space using the nonlinear registration tool FNIRT (Andersson, 2007a, 2007b), which resulted in a standard-space version of each subject's FA image. Because the current study involved subjects from two countries who might have different overall brain morphology, we contrasted the degree of warping (indexed by mean squared displacement of the brain) between subjects in America and China to detect potential differences in fiber tracts' locations. No group difference in warping was found. Next, the standard-space FA images of all subjects were merged and averaged to create a single mean FA image. This mean image was fed into the FA skeletonisation program to create a skeleton that only included voxels that were identified as white matter. Finally, a threshold of $FA > 0.2$ was applied to the skeleton and the resulting binary skeleton mask defined the set of voxels used in all subsequent cross-subject statistics.

Three sets of statistical analyses were conducted in the whole skeleton from TBSS (with age and Raven's score as the covariates). First, we correlated skeletonized FA with reading abilities in American and Chinese subjects separately by using the nonparametric permutation test with a correction for multiple comparisons (5000 times, $p < 0.05$) (randomize in FSL) (Nichols and Holmes, 2002). This resulted in maps of white matter fiber tracts whose FA was associated with reading abilities in the two samples. Second, to establish the *language-general* white matter fiber tracts, we conducted a conjunction analysis, in which the significant maps of white matter fiber tracts were binarized (significant white matter fiber tracts in the last step became $z = 1$ maps) and summed. The common white matter fiber tracts were then created at the threshold of $z = 2$. Finally, to determine *language-specific* white matter fiber tracts, we conducted direct statistical comparisons on the tracts showing either FA-reading ability relationship in Americans (Americans minus Chinese) or Chinese (Chinese minus Americans.), again, by using the nonparametric permutation test with a correction for multiple comparisons (5000 times, $p < 0.05$) (Nichols and Holmes, 2002).

Interscanner reliability analysis—Because of the use of two separate scanners, we wanted to ascertain interscanner reliability for white matter integrity. Six additional subjects (Chinese adults, age range: 29-35 yrs., mean age=31; 2 females, 4 males) were scanned in *both* machines using the same acquisition protocol as used for the study (see above for details). The same preprocessing and TBSS analysis were conducted (also see above for details). Each subject's mean FA values of white matter clusters in the whole brain were extracted. Using Cronbach's α test on these FA values (Beyer et al., 2013; Morey et al.,

2010), we found excellent inter-scanner reliability: $\alpha = .93$ for mean FA in clusters of the whole brain.

Reading and other diffusion properties—Besides FA, several previous studies investigated reading and other diffusion properties such as tangential (the first eigenvalue), radial (the second and third eigenvalues) and mean diffusivity (Cummine and Boliek, 2013; Dougherty et al., 2007; Frye et al., 2008; Lebel et al., 2013; Qiu et al., 2008; Steinbrink et al., 2008; Yeatman et al., 2011). We also explored the utility of these properties in predicting reading proficiency in our study. Results and discussion are presented in the supplementary materials.

Results

As shown in Table 2, FA in five white matter fiber bundles was positively associated with reading abilities of American subjects. They are located in the corpus callosum, bilateral external (internal) capsule, inferior longitudinal fasciculus, inferior fronto-occipital fasciculus, superior longitudinal fasciculus, corona radiate and left uncinate fasciculus (see Figure 1, the blue tracts). For Chinese subjects, FA in 11 white matter fiber bundles was positively associated with reading ability. They are located in the corpus callosum, bilateral corona radiate, left thalamic radiation, external (internal) capsule, cerebral peduncle, uncinate fasciculus, superior longitudinal fasciculus, inferior fronto-occipital fasciculus and right corticospinal tract (see Figure 1, red). There was no negative FA-reading ability relationship in any white matter cluster in either American or Chinese subjects.

Further conjunction analysis revealed that the FA of seven white matter fiber bundles in two main anatomical locations in the left hemisphere was commonly associated with reading abilities in both American and Chinese subjects (see Table 3, also see Figure 1, green, emphasized via TBSS command `tbss_fill`). One is the left superior corona radiate/body of the corpus callosum/superior longitudinal fasciculus (CR/CC/SLF) located in the parietal-frontal region (278 voxels, MNI coordinates) and the other is the left uncinate fasciculus/external capsule/inferior fronto-occipital fasciculus (UF/EC/IFO) located in the insular area (149 voxels). Direct comparisons (Americans minus Chinese) on the tracts that showed FA-reading ability relationship in Americans revealed that the FA of one white matter fiber bundle located in the left SLF (temporal part) was more strongly associated with reading in English than in Chinese (77 voxels, $x=-46$, $y=-28$, $z=-10$) (see Figure 2, red, emphasized via TBSS command `tbss_fill`). Direct comparisons (Chinese minus Americans) on the tracts showing FA-reading ability relationship in Chinese did not find any significant results.

Discussion

The primary purpose of the current study was to test language-general and -specific white matter microstructural bases for reading. The conjunction analysis identified white matter fiber bundles in two locations in the left hemisphere whose FA was associated with reading abilities in both English and Chinese speakers and the contrast analysis revealed one white matter fiber bundle in the left hemisphere whose FA specifically contributed to English reading.

One white matter fiber bundle for language-general FA-reading ability relationship was located in the left CR/CC/SLF. The CR/CC/SLF has been the focus of many previous studies of FA-reading relationship. Kingberg et al. (2000) firstly reported a positive correlation between the FA in left temporo-parietal area and reading ability ($x=-28$, $y=-20$, $z = 28$ in Talairach coordinates). Subsequent studies have generally confirmed their findings of FA differences between good and poor readers in the temporo-parietal areas (Beaulieu et al., 2005; Carter et al., 2009; Deutsch et al., 2005; Lebel et al., 2013; Niogi and McCandliss, 2006; Odegard et al., 2009; Rimrodt et al., 2010; Steinbrink et al., 2008), although studies disagreed in terms of the specific tracts for this effect. Kingberg et al. found most voxels of this effect exhibited anterior–posterior orientation and suggested that they were within the arcuate fasciculus (a component of the SLF), the main pipeline between language regions of Wernicke's and Broca's areas. Other studies, however, placed this effect mainly in the CR oriented in the superior–inferior direction (Beaulieu et al., 2005; Deutsch et al., 2005; Niogi and McCandliss, 2006) or within the callosal pathways (CC) between left and right hemispheres (Ben-Shachar et al., 2007; Dougherty et al., 2007). The CR connects the cerebellum, thalamus, brainstem, and spinal cord with dorsal cortical motor and somatosensory regions. However, given the complexity of white matter tracts (e.g., different tracts may interdigitate), Beaulieu et al. (2005) also suggested that “other relevant white matter fibers crossing at this level, such as the adjacent SLF, could be responsible for the correlation with reading ability” (Beaulieu et al., 2005).

The other fiber bundle that exhibited common FA-reading ability relationship in both English and Chinese speakers was located in the left UF/EC/IFO (the insular area). This tract has been described in several previous tractography reports of reading (or language) pathways (Anwander et al., 2007; Frey et al., 2008; Parker et al., 2005; Saur et al., 2008). It was suggested that, in addition to the dorsal pathway (the “phonological stream” of reading) that connects the posterior temporal lobe via the SLF through the parietal region to Broca's area (in particular BA 44) (as described in the classical model[Geschwind, 1970, 1972]), there was a more ventrally located route (the “semantic stream” of reading) connecting anterior superior temporal gyrus via UF/EC to Broca's area (in particular BA 45) (It should be noted that there may be more than one dorsal and ventral pathways, but the sub-dorsal and -ventral pathways are not reliably separable with the current technique, thus are beyond the scope of the current study) (for a review see Friederici, 2009).

Although the anatomy of UF/EC as part of the dual-route pathway of reading has been well-described in the literature, its role in reading is still unclear. Some patient studies have implicated this tract in language processing. For example, consistent with the dual-route theory, semantic dementia patients showed lower FA in UF and patients with UF removal showed worse semantic processing than did normal controls (Agosta et al., 2010; Lu et al., 2002). However, other studies did not find a semantic knowledge deficit in patients with partial UF removal, although these patients were worse at other aspects of language processing (e.g., retrieval of word form, word production) (Nomura et al., 2012; Papagno et al., 2011). This result might have been due to the different functions of the sub-regions of this tract (Duffau et al., 2009). To our knowledge, no previous study has examined the association between this tract's FA and reading ability in normal subjects.

Our findings about the two white matter fiber bundles whose integrity contributed to reading in both alphabetic and logographic languages seem to fit the current thinking about white matter pathways for reading (for a review see Friederici, 2009). We speculate that the CR/CC/SLF might be part of the dorsal pathway responsible for phonological processing, consistent with functional imaging evidence implicating the parietal-frontal region in phonology store and production (Turkeltaub et al., 2002; Vigneau et al., 2006). The UF/EC/IFO might be part of the ventral pathway responsible for semantic processing. It should be noted that the current study acquired the anatomical location information of tracts from the standard atlas, not from tracking the white matter fibers of the subjects. We thus discussed our results in terms of the dorsal and ventral pathways based on previous studies. Future research should use other techniques such as tractography to further verify the speculation of the dual reading pathways in the current study.

The tract that showed a specific association with English reading was located in the left temporal part of the SLF. Although the left SLF pathway has received the most attention for language processing for more than 100 years, the specific function and connectivity of the SLF and its subcomponents remain unclear (Dick and Tremblay, 2012). Although no previous study has examined cross-linguistic differences in white matter correlates of reading abilities, functional imaging studies have revealed greater activation in posterior superior temporal gyrus for English and other alphabetic languages than for logographic Chinese. Researchers have attributed this difference to this brain region's role in grapheme-to-phoneme conversion (GPC in assembled phonology) (Bolger et al., 2005; Tan et al., 2005). The tract identified in the current study (SLF) is under the posterior superior temporal cortex. Thus, we speculate that the temporal part of the SLF might be the white matter fiber that connects posterior superior temporal gyrus with other reading areas. The stronger association of the FA in the temporal part of the SLF for readers of an alphabetic language than that for readers of a logographic language suggested that this tract might play a critical role in GPC. Future research is needed to replicate this finding and to test specifically the role of this tract in GPC with designs that can rule out the confounds of other linguistic and nonlinguistic differences between English and Chinese (e.g., visual analysis, lexical processing and language production). In sum, by comparing the FA-reading ability relationships across languages and identifying two language-general white matter fiber bundles and one alphabetic language-specific white matter fiber tract, the current study extended previous cross-language research on functional neuroanatomical correlates of reading to white matter microstructural bases. Our results have important implications for understanding white matter pathway of reading different languages.

Supplementary Material

Refer to Web version on PubMed Central for supplementary material.

Acknowledgments

This research was supported by the 111 Project (B07008) from the Ministry of Education of China, the National Science Foundation (grant numbers BCS 0823624 and BCS 0823495) and the National Institute of Health (grant number HD057884-01A2). We thank all the members in the laboratory who helped with the data collection.

References

- Agosta F, Henry RG, Migliaccio R, Neuhaus J, Miller BL, Dronkers NF, Brambati SM, Filippi M, Ogar JM, Wilson SM, Gorno-Tempini ML. Language networks in semantic dementia. *Brain*. 2010; 133:286–299. [PubMed: 19759202]
- Andersson, J.; Jenkinson, M.; Smith, SM. Non-linear optimisation FMRIB Analysis Group Technical Reports. Oxford: University of Oxford; 2007a. TR07JA1
- Andersson, J.; Jenkinson, M.; Smith, SM. Non-linear registration, aka Spatial normalisation FMRIB Analysis Group Technical Reports. Oxford: University of Oxford; 2007b. Vol.TR07JA2
- Anwander A, Tittgemeyer M, von Cramon DY, Friederici AD, Knosche TR. Connectivity-Based Parcellation of Broca's Area. *Cereb Cortex*. 2007; 17:816–825. [PubMed: 16707738]
- Beaulieu C, Plewes C, Paulson LA, Roy D, Snook L, Concha L, Phillips L. Imaging brain connectivity in children with diverse reading ability. *Neuroimage*. 2005; 25:1266–1271. [PubMed: 15850744]
- Behrens TE, Woolrich MW, Jenkinson M, Johansen-Berg H, Nunes RG, Clare S, Matthews PM, Brady JM, Smith SM. Characterization and propagation of uncertainty in diffusion-weighted MR imaging. *Magn Reson Med*. 2003; 50:1077–1088. [PubMed: 14587019]
- Ben-Shachar M, Dougherty RF, Wandell BA. White matter pathways in reading. *Curr Opin Neurobiol*. 2007; 17:258–270. [PubMed: 17379499]
- Beyer MK, Alves G, Hwang KS, Babakchian S, Bronnick KS, Chou YY, Dalaker TO, Kurz MW, Larsen JP, Somme JH, Thompson PM, Tysnes OB, Apostolova LG. Cerebrospinal Fluid Abeta Levels Correlate With Structural Brain Changes in Parkinson's Disease. *Mov Disord*. 2013
- Bolger DJ, Perfetti CA, Schneider W. Cross-cultural effect on the brain revisited: universal structures plus writing system variation. *Hum Brain Mapp*. 2005; 25:92–104. [PubMed: 15846818]
- Carter JC, Lanham DC, Cutting LE, Clements-Stephens AM, Chen X, Hadzipasic M, Kim J, Denckla MB, Kaufmann WE. A dual DTI approach to analyzing white matter in children with dyslexia. *Psychiatry Res*. 2009; 172:215–219. [PubMed: 19346108]
- Cummine J, Boliek CA. Understanding white matter integrity stability for bilinguals on language status and reading performance. *Brain Struct Funct*. 2013; 218:595–601. [PubMed: 23097036]
- Deutsch GK, Dougherty RF, Bammer R, Siok WT, Gabrieli JD, Wandell B. Children's reading performance is correlated with white matter structure measured by diffusion tensor imaging. *Cortex*. 2005; 41:354–363. [PubMed: 15871600]
- Dick AS, Tremblay P. Beyond the arcuate fasciculus: consensus and controversy in the connective anatomy of language. *Brain*. 2012; 135:3529–3550. [PubMed: 23107648]
- Dougherty RF, Ben-Shachar M, Deutsch GK, Hernandez A, Fox GR, Wandell BA. Temporal-callosal pathway diffusivity predicts phonological skills in children. *Proc Natl Acad Sci U S A*. 2007; 104:8556–8561. [PubMed: 17483487]
- Duffau H, Gatignol P, Moritz-Gasser S, Mandonnet E. Is the left uncinate fasciculus essential for language? A cerebral stimulation study. *J Neurol*. 2009; 256:382–389. [PubMed: 19271103]
- Frey S, Campbell JS, Pike GB, Petrides M. Dissociating the human language pathways with high angular resolution diffusion fiber tractography. *J Neurosci*. 2008; 28:11435–11444. [PubMed: 18987180]
- Friederici AD. Pathways to language: fiber tracts in the human brain. *Trends Cogn Sci*. 2009; 13:175–181. [PubMed: 19223226]
- Frye RE, Hasan K, Xue L, Strickland D, Malmberg B, Liederman J, Papanicolaou A. Splenium microstructure is related to two dimensions of reading skill. *Neuroreport*. 2008; 19:1627–1631. [PubMed: 18806688]
- Geschwind N. The organization of language and the brain. *Science*. 1970; 170:940–944. [PubMed: 5475022]
- Geschwind N. Language and the brain. *Sci Am*. 1972; 226:76–83. [PubMed: 5014017]
- Jenkinson M, Smith S. A global optimisation method for robust affine registration of brain images. *Med Image Anal*. 2001; 5:143–156. [PubMed: 11516708]

- Klingberg T, Hedehus M, Temple E, Salz T, Gabrieli JD, Moseley ME, Poldrack RA. Microstructure of temporo-parietal white matter as a basis for reading ability: evidence from diffusion tensor magnetic resonance imaging. *Neuron*. 2000; 25:493–500. [PubMed: 10719902]
- Lebel C, Shaywitz B, Holahan J, Shaywitz S, Marchione K, Beaulieu C. Diffusion tensor imaging correlates of reading ability in dysfluent and non-impaired readers. *Brain Lang*. 2013
- Liu Y, Shu H, Li P. Word naming and psycholinguistic norms: Chinese. *Behav Res Methods*. 2007; 39:192–198. [PubMed: 17695344]
- Lu LH, Crosson B, Nadeau SE, Heilman KM, Gonzalez-Rothi LJ, Raymer A, Gilmore RL, Bauer RM, Roper SN. Category-specific naming deficits for objects and actions: semantic attribute and grammatical role hypotheses. *Neuropsychologia*. 2002; 40:1608–1621. [PubMed: 11985843]
- Morey RA, Selgrade ES, Wagner HR 2nd, Huettel SA, Wang L, McCarthy G. Scan-rescan reliability of subcortical brain volumes derived from automated segmentation. *Hum Brain Mapp*. 2010; 31:1751–1762. [PubMed: 20162602]
- Nichols TE, Holmes AP. Nonparametric permutation tests for functional neuroimaging: a primer with examples. *Hum Brain Mapp*. 2002; 15:1–25. [PubMed: 11747097]
- Niogi SN, McCandliss BD. Left lateralized white matter microstructure accounts for individual differences in reading ability and disability. *Neuropsychologia*. 2006; 44:2178–2188. [PubMed: 16524602]
- Nomura K, Kazui H, Tokunaga H, Hirata M, Goto T, Goto Y, Hashimoto N, Yoshimine T, Takeda M. Possible roles of the dominant uncinate fasciculus in naming objects: A case report of intraoperative electrical stimulation on a patient with a brain tumour. *Behav Neurol*. 2012
- Odegard TN, Farris EA, Ring J, McColl R, Black J. Brain connectivity in non-reading impaired children and children diagnosed with developmental dyslexia. *Neuropsychologia*. 2009; 47:1972–1977. [PubMed: 19428430]
- Papagno C, Miracapillo C, Casarotti A, Romero Lauro LJ, Castellano A, Falini A, Casaceli G, Fava E, Bello L. What is the role of the uncinate fasciculus? Surgical removal and proper name retrieval. *Brain*. 2011; 134:405–414. [PubMed: 20959310]
- Parker GJ, Luzzi S, Alexander DC, Wheeler-Kingshott CA, Ciccarelli O, Lambon Ralph MA. Lateralization of ventral and dorsal auditory-language pathways in the human brain. *Neuroimage*. 2005; 24:656–666. [PubMed: 15652301]
- Perfetti CA, Liu Y, Tan LH. The lexical constituency model: some implications of research on Chinese for general theories of reading. *Psychol Rev*. 2005; 112:43–59. [PubMed: 15631587]
- Price CJ. The anatomy of language: contributions from functional neuroimaging. *J Anat*. 2000; 197(Pt 3):335–359. [PubMed: 11117622]
- Qiu D, Tan LH, Zhou K, Khong PL. Diffusion tensor imaging of normal white matter maturation from late childhood to young adulthood: voxel-wise evaluation of mean diffusivity, fractional anisotropy, radial and axial diffusivities, and correlation with reading development. *Neuroimage*. 2008; 41:223–232. [PubMed: 18395471]
- Rimrod SL, Peterson DJ, Denckla MB, Kaufmann WE, Cutting LE. White matter microstructural differences linked to left perisylvian language network in children with dyslexia. *Cortex*. 2010; 46:739–749. [PubMed: 19682675]
- Sakurai Y, Momose T, Iwata M, Sudo Y, Ohtomo K, Kanazawa I. Different cortical activity in reading of Kanji words, Kana words and Kana nonwords. *Brain Res Cogn Brain Res*. 2000; 9:111–115. [PubMed: 10666563]
- Saur D, Kreher BW, Schnell S, Kummerer D, Kellmeyer P, Vry MS, Umarova R, Musso M, Glauche V, Abel S, Huber W, Rijntjes M, Hennig J, Weiller C. Ventral and dorsal pathways for language. *Proc Natl Acad Sci U S A*. 2008; 105:18035–18040. [PubMed: 19004769]
- Schlaggar BL, McCandliss BD. Development of neural systems for reading. *Annu Rev Neurosci*. 2007; 30:475–503. [PubMed: 17600524]
- Siok WT, Niu Z, Jin Z, Perfetti CA, Tan LH. A structural-functional basis for dyslexia in the cortex of Chinese readers. *Proc Natl Acad Sci U S A*. 2008; 105:5561–5566. [PubMed: 18391194]
- Siok WT, Perfetti CA, Jin Z, Tan LH. Biological abnormality of impaired reading is constrained by culture. *Nature*. 2004; 431:71–76. [PubMed: 15343334]

- Smith SM. Fast robust automated brain extraction. *Hum Brain Mapp.* 2002; 17:143–155. [PubMed: 12391568]
- Smith SM, Jenkinson M, Johansen-Berg H, Rueckert D, Nichols TE, Mackay CE, Watkins KE, Ciccarelli O, Cader MZ, Matthews PM, Behrens TE. Tract-based spatial statistics: voxelwise analysis of multi-subject diffusion data. *Neuroimage.* 2006; 31:1487–1505. [PubMed: 16624579]
- Snyder PJ, H L. Handedness, sex, and familial sinistrality effects on spatial tasks. *Cortex.* 1993; 29:115–134. [PubMed: 8472549]
- Steinbrink C, Vogt K, Kastrup A, Muller HP, Juengling FD, Kassubek J, Riecker A. The contribution of white and gray matter differences to developmental dyslexia: insights from DTI and VBM at 3.0 T. *Neuropsychologia.* 2008; 46:3170–3178. [PubMed: 18692514]
- Tan LH, Laird AR, Li K, Fox PT. Neuroanatomical correlates of phonological processing of Chinese characters and alphabetic words: a meta-analysis. *Hum Brain Mapp.* 2005; 25:83–91. [PubMed: 15846817]
- Thuy DH, Matsuo K, Nakamura K, Toma K, Oga T, Nakai T, Shibasaki H, Fukuyama H. Implicit and explicit processing of kanji and kana words and non-words studied with fMRI. *Neuroimage.* 2004; 23:878–889. [PubMed: 15528088]
- Torgesen, JK.; Wagner, RK.; Rashotte, CA. *TOWRE: Test of Word Reading Efficiency. PRO-ED;* Austin, TX: 1999.
- Turkeltaub PE, Eden GF, Jones KM, Zeffiro TA. Meta-analysis of the functional neuroanatomy of single-word reading: method and validation. *Neuroimage.* 2002; 16:765–780. [PubMed: 12169260]
- Vandermosten M, Boets B, Wouters J, Ghesquiere P. A qualitative and quantitative review of diffusion tensor imaging studies in reading and dyslexia. *Neurosci Biobehav Rev.* 2012; 36:1532–1552. [PubMed: 22516793]
- Vigneau M, Beaucousin V, Herve PY, Duffau H, Crivello F, Houde O, Mazoyer B, Tzourio-Mazoyer N. Meta-analyzing left hemisphere language areas: phonology, semantics, and sentence processing. *Neuroimage.* 2006; 30:1414–1432. [PubMed: 16413796]
- Wandell BA. The neurobiological basis of seeing words. *Ann N Y Acad Sci.* 2011; 1224:63–80. [PubMed: 21486296]
- Yang J, McCandliss BD, Shu H, Zevin JD. Simulating Language-specific and Language-general Effects in a Statistical Learning Model of Chinese Reading. *J Mem Lang.* 2009; 61:238–257. [PubMed: 20161189]
- Yang SH, McCandliss BD, Zevin JD. Orthographic influences on division of labor in learning to read Chinese and English: Insights from computational modeling. *Bilingualism: Language and Cognition.* 2013; 16:356–366.
- Yeatman JD, Dougherty RF, Rykhlevskaia E, Sherbondy AJ, Deutsch GK, Wandell BA, Ben-Shachar M. Anatomical properties of the arcuate fasciculus predict phonological and reading skills in children. *J Cogn Neurosci.* 2011; 23:3304–3317. [PubMed: 21568636]
- Zhang M, Li J, Chen C, Mei L, Xue G, Lu Z, He Q, Wei M, Dong Q. The contribution of the left mid-fusiform cortical thickness to Chinese and English reading in a large Chinese sample. *Neuroimage.* 2013a; 65:250–256. [PubMed: 23022094]
- Zhang M, Li J, Chen C, Xue G, Lu Z, Mei L, Xue H, Xue F, He Q, Wei M, Dong Q. Resting-state functional connectivity and reading abilities in first and second languages. *Neuroimage.* 2013b; 84C:546–553. [PubMed: 24055555]
- Zhu B, Chen C, Loftus EF, Lin C, He Q, Li H, Xue G, Lu Z, Dong Q. Individual differences in false memory from misinformation: cognitive factors. *Memory.* 2010; 18:543–555. [PubMed: 20623420]

Research Highlights

- We test fractional anisotropy (FA) and reading abilities
- Common and divergent FA-reading relationship in Chinese and English reading
- Language-general and –specific white matter microstructural bases for reading

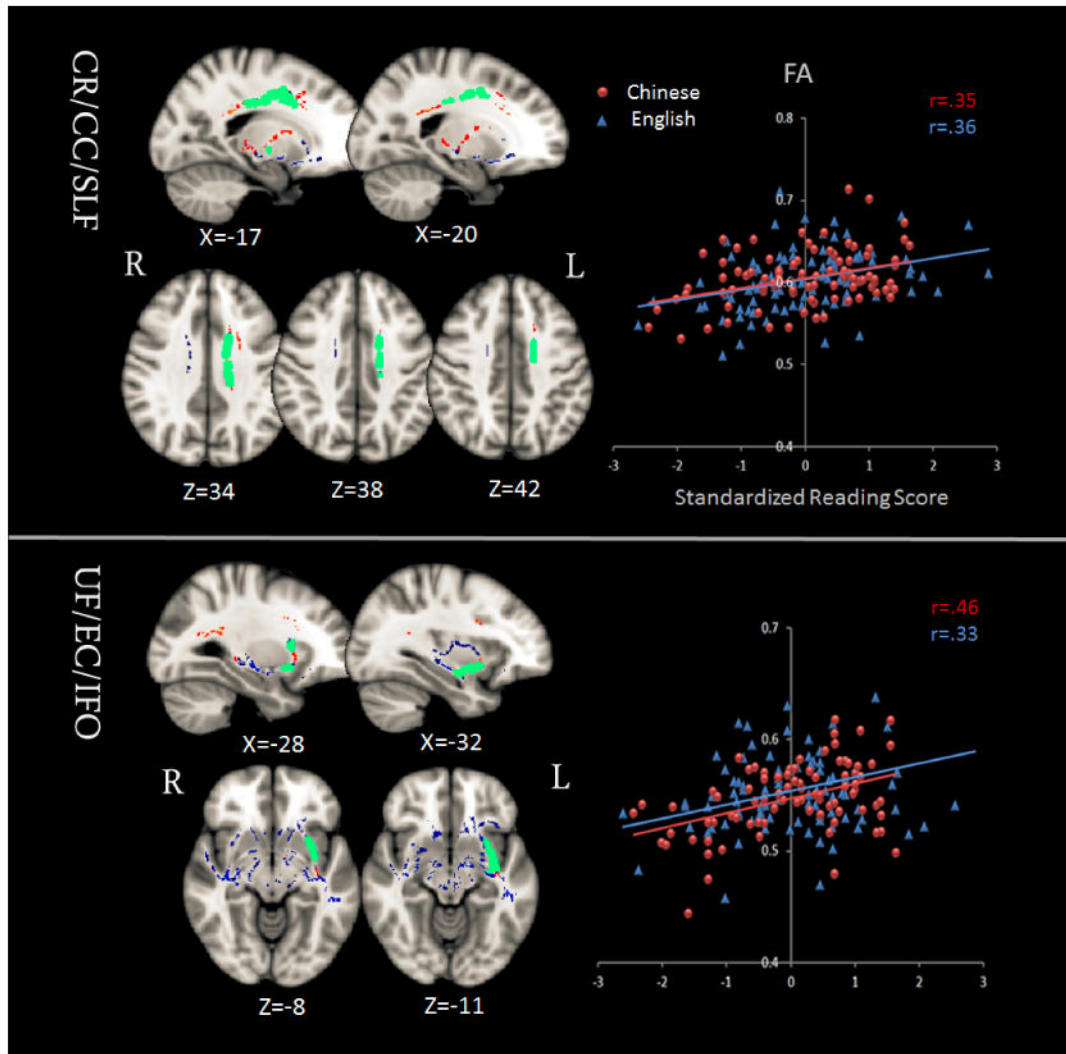


Figure 1.

Tracts whose FA was related to reading abilities of Americans (blue) or Chinese (red) or both (green, emphasized via TBSS command `tbss_fill`) (corrected $p < .05$) and the scatter plot of associations between reading and FA of two main anatomical locations in left hemisphere (dorsal CR/CC/SLF and ventral UF/EC/IFO). L, left hemisphere; R, right hemisphere; CR, superior corona radiate; CC, body of corpus callosum; SLF, superior longitudinal fasciculus; UF, uncinate fasciculus; EC, external capsule; IFO, inferior fronto-occipital fasciculus.

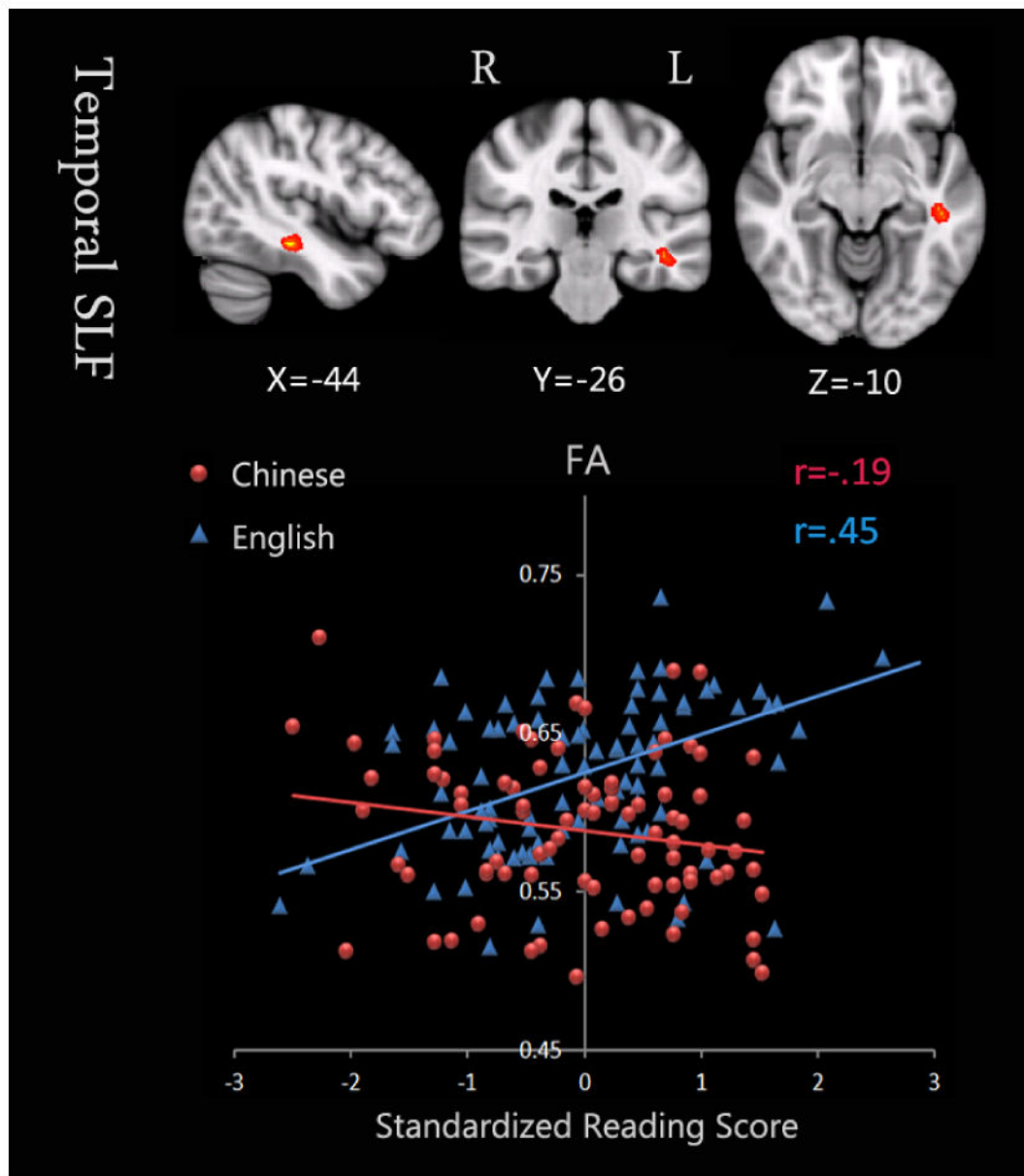


Figure 2.

Tract whose FA was specifically related to reading abilities of Americans (red, emphasized via TBSS command `tbss_fill`) (corrected $p < .05$) and the scatter plot of associations between reading and FA of this tract (the left temporal SLF). L, left hemisphere; R, right hemisphere; SLF, superior longitudinal fasciculus.

Table 1
Characteristics of the subjects

	U.S. subjects	Chinese subjects
Age (years)	20.8(2.2) [18 - 30]	21.7(1.7) [19 - 25]
Gender (F/M)	54/39	45/44
Handedness	All right-handed	All right-handed
Raven' Progressive Matrices		
<i>Scores</i>	26.7(3.9) [17 - 35]	27.8(3.8) [18 - 35]
<i>Time (minutes)</i>	31.7(6.9) [14 - 40]	32.3(7.1) [13 - 40]
Reading ability		
<i>Raw scores</i>	104.8(14.5) [67 - 146]	83.9(13.1) [51 - 104]
<i>Standardized Scores</i>	0(1.0) [-2.61 - 2.86]	0(1.0) [-2.50 - 1.52]

Note: Standard deviations are shown in parentheses and ranges in brackets

Table 2
Fiber clusters whose FA showed significant associations with reading abilities of
American and Chinese subjects

Sample	Voxels in cluster	Peak (MNI)	Anatomical location of cluster (>5% probability on these tracts)	P value
<i>American</i>	3970	-3, -24, -22	L external(internal) capsule/inferior longitudinal fasciculus/inferior fronto-occipital fasciculus/ superior longitudinal fasciculus/anterior corona radiate/uncinate fasciculus	.02
	2853	36, -5, -22	R external(internal) capsule/inferior longitudinal fasciculus/inferior fronto-occipital fasciculus/superior longitudinal fasciculus	.02
	1158	13, 22, 20	R superior corona radiate/body(genu) of corpus callosum	.04
	340	-11, 24, 18	L superior corona radiate/body(genu) of corpus callosum	.04
	122	9, 30, 6	R genu of corpus callosum/anterior corona radiate/	.05
<i>Chinese</i>	1479	-23, -53, 9	L posterior(superior/anterior) corona radiate/body (splenium) of corpus callosum / posterior thalamic radiation/inferior fronto-occipital fasciculus	.02
	885	-40, -8, -23	L anterior(superior) corona radiate/external capsule/uncinate fasciculus/superior longitudinal fasciculus	.03
	312	-9, -3, -7	L internal capsule	.04
	77	-17, -23, -6	L cerebral peduncle	.05
	29	-10, 24, 15	L genu of corpus callosum	.05
	18	-14, -23, -3	L anterior thalamic radiation	.05
	17	20, -25, 49	R corticospinal tract	.05
	17	-12, -26, -5	Unclassified	.05
	13	27, -42, 25	R posterior corona radiate	.05
	11	21, -29, 48	R corticospinal tract	.05
10	-8, -21, 1	L anterior thalamic radiation	.05	

L, left hemisphere; R, right hemisphere

Table 3

Common positive FA-reading ability relationship in both American and Chinese subjects.

Voxels in cluster	Centre of gravity(MNI)	Anatomical location of cluster (>5% probability on these tracts)	Pathways		
x	Y	Z			
142	-18	4	34	L CR/CC	Dorsal
104	-34	-5	-12	L UF/EC/IFO	Ventral
65	-17	-11	37	L unclassified	Dorsal
61	-15	-20	32	L SLF	Dorsal
27	-30	9	-9	L UF/IFO	Ventral
18	-27	13	10	L IFO/UF	Ventral
16	-14	3	30	L CC	Dorsal

L, left hemisphere; R, right hemisphere; CR, corona radiate; CC, corpus callosum; SLF, superior longitudinal fasciculus; UF, uncinate fasciculus; EC, external capsule; IFO, inferior fronto-occipital fasciculus