

UC Riverside

UC Riverside Previously Published Works

Title

Sortin2 enhances endocytic trafficking towards the vacuole in *Saccharomyces cerevisiae*

Permalink

<https://escholarship.org/uc/item/0vh4m9tp>

Journal

Biological Research, 48(1)

ISSN

0716-9760

Authors

Vásquez-Soto, Beatriz

Manríquez, Nicolás

Cruz-Amaya, Mirna

et al.

Publication Date

2015-12-01

DOI

10.1186/s40659-015-0032-9

Copyright Information

This work is made available under the terms of a Creative Commons Attribution License, available at <https://creativecommons.org/licenses/by/4.0/>

Peer reviewed

RESEARCH ARTICLE

Open Access



Sortin2 enhances endocytic trafficking towards the vacuole in *Saccharomyces cerevisiae*

Beatriz Vásquez-Soto¹, Nicolás Manríquez¹, Mirna Cruz-Amaya¹, Jan Zouhar², Natasha V Raikhel³ and Lorena Norambuena^{1*}

Abstract

Background: A highly regulated trafficking of cargo vesicles in eukaryotes performs protein delivery to a variety of cellular compartments of endomembrane system. The two main routes, the secretory and the endocytic pathways have pivotal functions in uni- and multi-cellular organisms. Protein delivery and targeting includes cargo recognition, vesicle formation and fusion. Developing new tools to modulate protein trafficking allows better understanding the endomembrane system mechanisms and their regulation. The compound Sortin2 has been described as a protein trafficking modulator affecting targeting of the vacuolar protein carboxypeptidase Y (CPY), triggering its secretion in *Saccharomyces cerevisiae*.

Results: A reverse chemical-genetics approach was used to identify key proteins for Sortin2 bioactivity. A genome-wide Sortin2 resistance screen revealed six yeast deletion mutants that do not secrete CPY when grown at Sortin2 condition where the parental strain does: *met18*, *sla1*, *clc1*, *dfg10*, *dpl1* and *yjl175w*. Integrating mutant phenotype and gene ontology annotation of the corresponding genes and their interactome pointed towards a high representation of genes involved in the endocytic process. In wild type yeast endocytosis towards the vacuole was faster in presence of Sortin2, which further validates the data of the genome-wide screen. This effect of Sortin2 depends on structural features of the molecule, suggesting compound specificity. Sortin2 did not affect endocytic trafficking in Sortin2-resistant mutants, strongly suggesting that the Sortin2 effects on the secretory and endocytic pathways are linked.

Conclusions: Overall, the results reveal that Sortin2 enhances the endocytic transport pathway in *Saccharomyces cerevisiae*. This cellular effect is most likely at the level where secretory and endocytic pathways are merged. Them Sortin2 specificity over the endomembrane system places it as a powerful biological modulator for cell biology.

Keywords: Endocytosis, Sortin2, Trafficking modulator, *Saccharomyces cerevisiae*

Background

Eukaryotes have developed an intricate system of protein delivery to various cellular compartments, based on highly regulated trafficking of cargo vesicles. Cargo recognition, vesicle formation and fusion represent the core of endomembrane system processes and form two main routes, the secretory and the endocytic pathways. These two pathways have pivotal functions in uni- and multi-cellular organisms. New discoveries have highlighted the role of the endomembrane system in diverse cellular

processes such as cell polarity, signaling, development and response to environmental challenges [1, 2]. Therefore, new and innovative tools to manipulate endomembrane trafficking are of great interest.

Chemical genomics is a powerful tool to discover such new biomodulators. It employs large diverse collections of compounds to identify small bioactive molecules in order to manipulate biological pathways in a similar fashion to classical genetics [3, 4]. The bioactive compound may be used as an instrumental tool to manipulate biological processes even when the cognate target(s) is(are) still unknown. The identification of the members of drug-sensitive pathways may aid in the identification and characterization of novel intracellular networks. Successful

*Correspondence: Inorambuena@uchile.cl

¹ Plant Molecular Biology Centre, Department of Biology, Faculty of Sciences, University of Chile, Las Palmeras 3425 Ñuñoa, Santiago, Chile
Full list of author information is available at the end of the article

approaches for such duty have included biochemical and genetic analysis [5, 6].

Genetic approaches are usually carried out by genome-wide screens that involve searching through collections of mutants for those with altered sensitivities to the drug, i.e., hypersensitivity or resistance. The most used model to carry out such screenings has been *Saccharomyces cerevisiae* deletion mutant collections, which have led to the identification of several novel components of cellular networks [7–9].

Drugs that impair vacuolar trafficking in *S. cerevisiae* have been identified and called sorting inhibitors (Sortins) [10]. These compounds mimic the phenotype of *vacuolar protein sorting (vps)* mutants [11–13] suggesting that they modify components of the endomembrane trafficking pathway. A genome-wide hypersensitivity screen showed that Sortin2 affects primarily components within the endomembrane system in yeast [14]. This analysis identified 217 Sortin2 hypersensitive *Saccharomyces* deletion mutants in where the mutated genes are enrichment on genes products involved on protein trafficking and localized particularly in endosomes [14]. Therefore the Sortin2 mode of action and the proteins involved on it are interesting subjects of study especially for further uses of the drug.

In order to identify proteins that are critical for the mode of action of Sortin2, we used a reverse chemical-genetics approach; we performed a Sortin2-resistant genome-wide screening using a *S. cerevisiae* haploid deletion library. We found six ORFs whose deletion caused Sortin2 resistance. Mutant phenotypes, GO annotation and the interactome of the corresponding genes indicated endocytosis as the principal GO process. Consistently, Sortin2 treatment enhanced trafficking of the endocytic tracer FM4-64 toward the vacuole. Analysis of structure–bioactivity relationships suggested that Sortin2 effects on endocytosis toward the vacuole depend on Sortin2 structural features. Genetic and chemical analog analysis strongly suggests that the effect of Sortin2 on the secretory pathway is linked to its effect on endocytosis.

Results

Sortin2 resistance genome-wide screen

In order to find important molecular component(s) for Sortin2 bioactivity in yeast, a screen for mutants resistant to Sortin2 was performed using a loss-of-function mutant collection of 4,800 haploid deletion *S. cerevisiae* strains. It was anticipated that this resistance screening would identify proteins required for Sortin2 bioactivity that were not codified by an essential gene. The parental strain secretes CPY when grown with 10 μ M Sortin2 [14]. The primary screen was performed with Sortin2 47 μ M that is almost five times higher of the minimal concentration

that trigger CPY secretion in the wild type strain. Therefore the screening could identify the strong resistance to Sortin2. Out of the entire collection, 36 putative resistant strains were identified (Additional file 1: Table S1). These strains were retested with different concentrations of Sortin2 to confirm the resistant phenotype. The threshold to consider a strain resistant to Sortin2 was 10 μ M because that was the concentration that trigger secretion of CPY in the wild type strain using peroxidase detection. Mutant strains that did not secrete CPY with 10 μ M Sortin2 were considered as Sortin2-resistant mutants. Out of the 36 primary screen hits, 6 mutants were confirmed as resistant to Sortin2 by this dosage dependence analysis (Figure 1; Additional file 1: Table S1). The results showed that *sla1*, *met18* and *clc1* were resistant to up to 40 μ M Sortin2. Furthermore *dfg10* and *dpl1* were resistant to Sortin2 up to 20 μ M as well as the dubious mutant *yjl175w*. Sortin2 did not inhibit growth performance of the Sortin2-resistant mutants, which was evaluated by growing them in 47 μ M of Sortin2 for 10 h (Additional file 2: Figure S1). Sortin2 does not inhibit the growth neither the viability of five of the Sortin2-resistant mutants when they grown for 72 h with 20 μ M of the chemical (Additional file 3: Figure S2). Therefore, the observed resistance to Sortin2 of *met18*, *sla1*, *clc1*, *dfg10* and *dpl1* was not due to cell growth impairment but rather to changes in trafficking machinery that resulted in reduced secretion of CPY. In the case of *yjl175w*, which deletion affects a dubious gene, this condition of treatment inhibits its growth (Additional file 3: Figure S2). Therefore the lack of CPY secretion resistance to Sortin2 could be due to a lower amount of cells and CPY detection limits. Interestingly Sortin2 increases the viability of *met18* and *dpl1* suggesting than this compound improve cell performance (Additional file 3: Figure S2).

CPY is a vacuolar soluble protein that is secreted to the extracellular medium under certain chemical or genetic conditions [10, 15, 16]. Therefore, the Sortin2 resistance observed in *sla1*, *met18* and *clc1* could be due to general defects in the secretory pathway in the mutant background. To test this hypothesis, Sortin1, which also induces secretion of CPY [10], was evaluated for its effect on CPY trafficking in identified resistant mutants. Sortin1 was able to trigger CPY secretion in the *sla1*, *met18* and *clc1* strains (Figure 1), suggesting that the mutants have a functional secretion pathway. Although Sortin1 triggers CPY secretion in *sla1* in much less extension than the parental strain the sensitivity of *sla1* to three different CPY-secretion triggering compounds confirms its ability to secrete CPY (Additional file 4: Figure S3). Importantly, Sortin1 treatment induced CPY-mistargeting in Sortin2-resistant mutants, indicating that the corresponding deletion confers resistance to certain

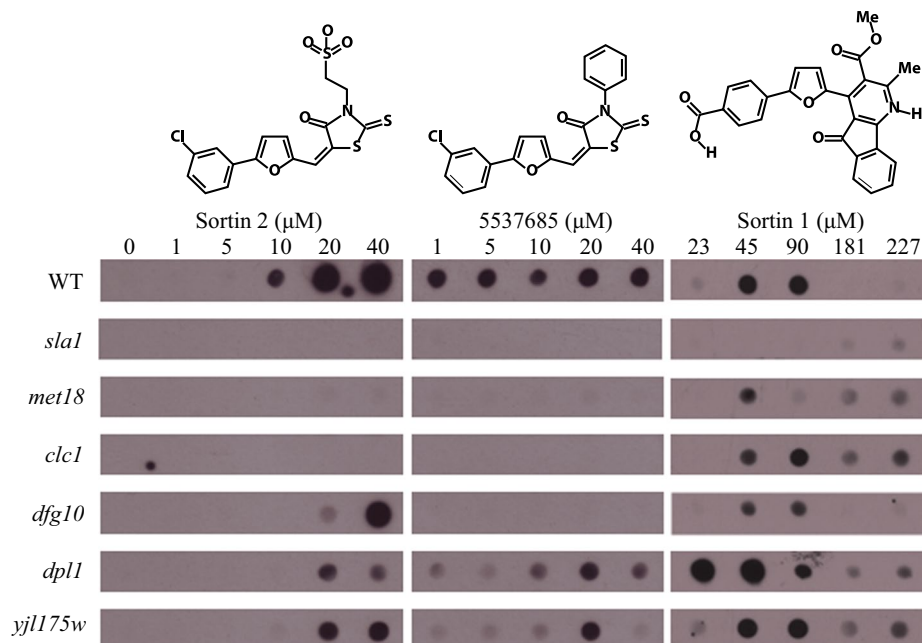


Figure 1 Sortin2 *S. cerevisiae* resistance is specific to Sortin2-related structures. Mutant and parental (WT) strains were grown in YPD medium supplemented with the indicated concentrations of Sortin2 (μM), compound 5537685 and Sortin1. The control condition (0 μM Sortin2) contained 1% DMSO, which is present in all conditions since it is the solvent for the three compounds. The presence of CPY was analyzed on the growth medium by dot-blot using a CPY monoclonal antibody. The experiment was performed three times.

structural determinants of Sortin2. Furthermore, *sla1*, *met18*, *clc1* and *dfg10* were also resistant to the Sortin2 structural analog 5537685, revealing that Sortin2 resistance is specific for Sortin2-related structures in these strains (Figure 1). On the contrary, *dpl1* and *yjl175w* were sensitive to 5537685 although their secretion was much weaker than the parental line. Therefore the Sortin2 resistance of these two mutants could be due to structural differences between Sortin2 and 5537685 (Figure 1).

We further analyzed the gene ontology term representation for genes whose deletion provokes resistance to Sortin2. According to the GO annotation available in the *S. cerevisiae* database (SDG, <http://www.yeastgenome.org/>), four of those genes encode proteins that are related to endomembrane trafficking: CLC1, SLA1, DFG10 and DPL1 (Table 1). This finding is consistent with the specific mode of action of Sortin2 on the yeast endomembrane system [14]. The CLC1 and SLA1 genes encode a clathrin light chain and an actin binding protein, respectively, and are directly involved in endocytosis [17, 24]. In addition, *sla1*, *met18*, *dfg10* and *yjl175w* mutants show endocytosis defects, indicating that the encoding proteins are important for this cellular process [39]. The YJL175W gene corresponds to a dubious ORF but its deletion also affects endocytosis [39]. Therefore among the genes that encode proteins required for Sortin2 bioactivity, five out of six genes participate in the endocytosis process.

Sortin2 enhances endocytic trafficking toward the vacuole in *S. cerevisiae*

Due to the functional characteristics of gene products affected in Sortin2-resistant mutants, the effect of Sortin2 in the endocytic route was analyzed. Internalization of the endocytic tracer FM4-64 [40] was analyzed by confocal microscopy (Figure 2a). In wild type *S. cerevisiae* (control), the FM4-64 dye reached the vacuole in approximately 40 min (Figure 2b, c). However, in cells treated with Sortin2, FM4-64 reached the vacuole in 25 min (Figure 2b, c), while in wild type cells the FM4-64 was still localized to endosome structures (Figure 2b). This result indicates that Sortin2 likely enhances endocytic trafficking towards the vacuole in *S. cerevisiae*.

To determine the specificity of the Sortin2 impact on endocytosis, the effect of compounds structurally related to Sortin2 was analyzed. The results showed that chemicals 5529640 and 5537685 speed up the FM4-64 endocytic pathway similarly to Sortin2 (Figure 3, Additional file 5: Figure S4). Therefore changing the sulfonate group in Sortin2 did not have an impact in its effect on endocytosis. Importantly, both 5670647 and 6269701 compounds had no effect on endocytosis timing, indicating that functional groups on both ends of Sortin2 molecule are important for Sortin2 bioactivity (Figure 3, Additional file 5: Figure S4). This result is consistent with the lack

Table 1 Gene ontology (GO) of genes whose deletion provokes resistance to Sortin2 in *S. cerevisiae*

Gene/ORF	GO function	GO process	GO component	References
SLA1 YBL007C	Protein binding, bridging ¹ Ubiquitin binding ² Actin binding ³ Cytoskeletal protein binding ⁴ Identical protein binding ⁴	Actin cortical patch assembly ⁵ Endocytosis ⁶ Fungal-type cell wall organization ⁵	Actin cortical patch ⁷ Cell cortex ¹ Nucleus ⁸ Mating projection tip ⁹ Cytoskeleton ³ Endosome membrane ³ Plasma membrane ³	¹ Warren et al. [17] ² Stamenova et al. [18] ³ UniProt-GOA [19] ⁴ DDB et al. [20] ⁵ Pruyne and Bretscher [21] ⁶ Howard et al. [22] ⁷ Ayscough et al. [23] ⁸ Gardiner et al. [24] ⁹ Narayanaswamy et al. [25]
CLC1 YGR167W	Structural molecule activity ¹ Calmodulin binding ² Structural molecule activity ³	Endocytosis ⁴ Vesicle-mediated Transport ^{1,3} Intracellular protein transport ³	Clathrin vesicle coat ¹ Clathrin coat of coated pit ³ Clathrin coat of trans-Golgi network vesicle ³	¹ Pishvae et al. [26] ² UniProt-GOA [19] ³ DDB et al. [20] ⁴ Newpher and Lemmon [27]
MET18 YIL128W	Binding ⁵	Methionine metabolic process ¹ Nucleotide-excision repair ² Transcription from RNA polymerase II promoter ³ DNA repair ⁶ Response to DNA damage stimulus ⁶ Transcription, DNA-dependent ⁶	Cytoplasm ⁴ Nucleus ⁶	¹ Masselot and De Robichon-Szulmajster [28] ² Kou et al. [29] ³ Lauder et al. [30] ⁴ Huh et al. [31] ⁵ DDB et al. [20] ⁶ UniProt-GOA [19]
DFG10 YIL049W	3-Oxo-5- α -steroid 4-dehydrogenase activity ¹ Oxidoreductase activity, acting on the CH-CH group of donors ⁵	Dolichol biosynthetic process ¹ Pseudohyphal growth ² Lipid metabolic process ⁵	Integral to membrane ^{3,4,5} Endoplasmic reticulum membrane ⁴	¹ Cantagrel et al. [32] ² Mosch and Fink [33] ³ De Hertogh et al. [34] ⁴ UniProt-GOA [19] ⁵ DDB et al. [20]
DPL1 YDR294C	Sphinganine-1-phosphate aldolase activity ¹ Carboxy-lyase activity ⁶ Pyridoxal phosphate binding ⁶	Calcium-mediated signaling ² Cellular response to starvation ³ Sphingolipid metabolic process ¹ Carboxylic acid metabolic process ⁶	Endoplasmic reticulum ^{4,5}	¹ Saba et al. [35] ² Birchwood et al. [36] ³ Gottlieb et al. [37] ⁴ Mukhopadhyay et al. [38] ⁵ Huh et al. [31] ⁶ DDB et al. [20]
YJL175W YJL175W	Unknown	Unknown	Integral to membrane ¹	¹ De Hertogh et al. [34]

Biological process, molecular function and cellular component GO are shown for each ORF.

of activity of 5670647 and very low potency of 6269701 regarding CPY secretion [14].

Sortin2 does not alter endocytic trafficking in Sortin2 resistant mutants

It has been demonstrated that Sortin2 not only impairs trafficking of CPY to the vacuole [10, 14] but also modifies the kinetics of endocytic trafficking in *Saccharomyces cerevisiae*. In order to test if the two phenotypes are linked, we analyzed whether Sortin2-resistant mutants were also resistant to the Sortin2 effect in endocytic trafficking toward the vacuole. Due to the size of the *met18* mutant cells and subsequent difficulties in assessing their subcellular phenotypes, the *met18* strain was not tested. Other Sortin2 resistant mutants were treated with Sortin2 at a concentration that made FM4-64 trafficking to the vacuole faster in the parental line (Figure 4). At 25 min FM4-64 labeled solely endosomes in all mutants treated with Sortin2, as in control conditions (Figure 4), indicating that mutations that confer Sortin2 resistance

also suppressed the enhanced endocytosis phenotype observed for the wild-type strain. FM4-64 did not reach the vacuole at 25 min in any of the Sortin2-treated mutants. However, after 40 min of internalization FM4-64 was localized in the vacuole membrane, indicating that the lack of Sortin2 effect was not due to mutant impairment of endocytosis (Additional file 6: Figure S5).

Interactome of proteins required for Sortin2 bioactivity

In order to determine whether identified gene products required for Sortin2 bioactivity are directly or indirectly involved in endocytic pathways, their interactome network was determined using OSPREY software [41]. We used the six gene products as query to build the interactome of physical and genetic interactions. The resulting network contained 273 nodes with edges representing physical or genetic interactions (data not shown). These nodes were classified according to their location and cell function using CellLoc and FunCat tools (<http://www.mips.gsf.de>), respectively. The Sortin2 resistance

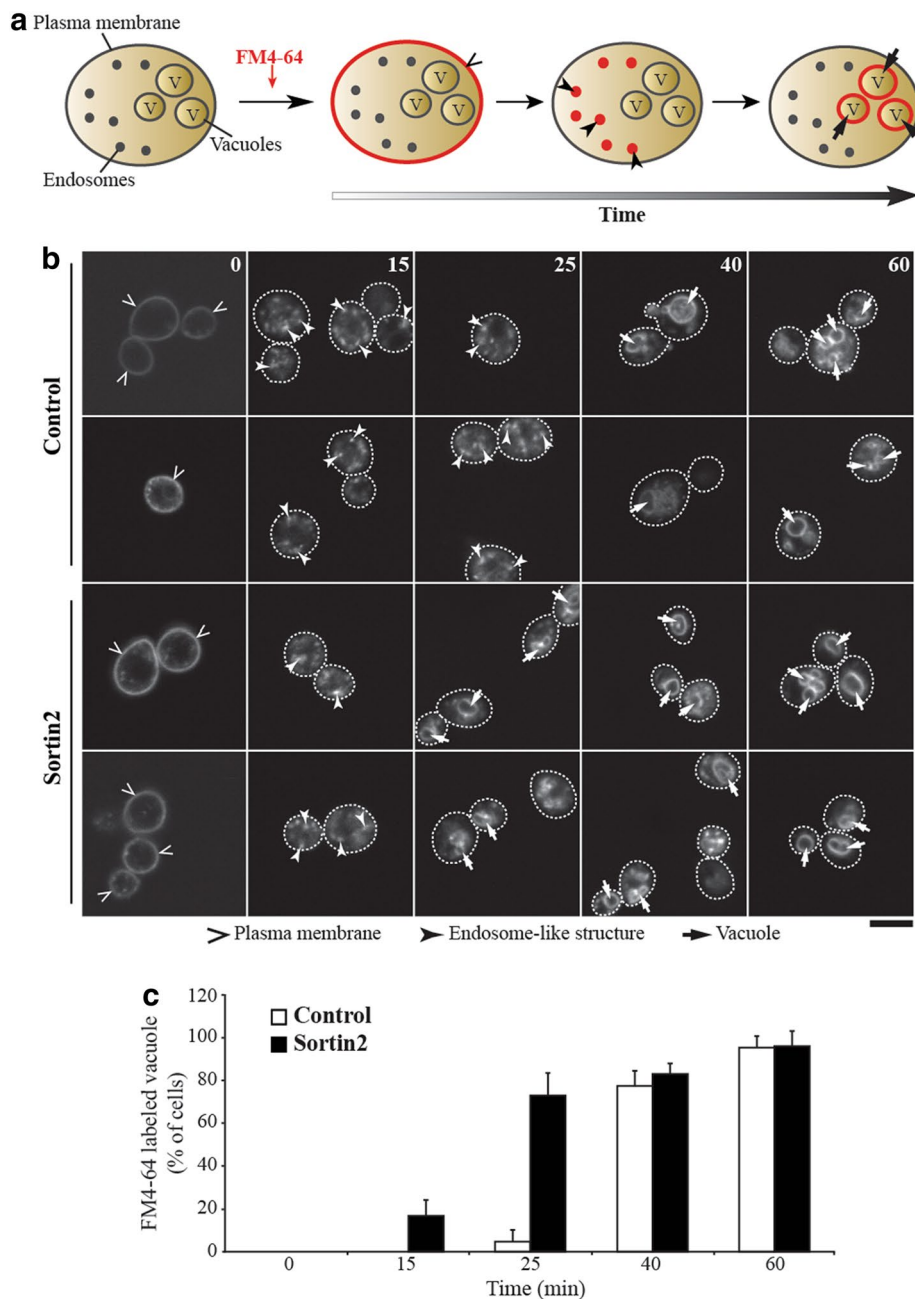


Figure 2 Sortin2 enhances internalization of FM4-64. **a** Diagram of FM4-64 endocytosis labeling. Cells were incubated with 24 μ M FM4-64 for 30 min at 4°C for plasma membrane FM4-64 binding. Then turned to 28°C (time 0) to be imaged subsequently at different times of incubation by confocal microscopy. Progressively FM4-64 is progressively trafficking to intracellular compartments by endocytosis. **b** *S. cerevisiae* parental line was grown on YPD 1% DMSO (control) and YPD supplemented with 20 μ M Sortin2. Two representative images of approximately 25 cells are shown in each condition. The experiment was performed three times. Scale bar represents 5 μ m. **c** Cells with FM4-64 labeled vacuoles were scored in each condition on **b**. The percentage of cells with FM4-64 labeled vacuoles is informed with standard deviation.

interactome analysis showed genes involved in different cellular process. The largest enrichment processes were “Cell fate” and “Cell type differentiation” followed by “Cell cycle and DNA processing” and “Cellular communication/signal transduction mechanism” with 3.5,

3.3, 2.4 and 2.4 fold enrichment on the Sortin2-resistance interactome, respectively (Table 2). However, when more specific granular terms were analyzed, the results showed that the processes of “Regulation of DNA processing” and “Endocytosis” had the highest enrichment,

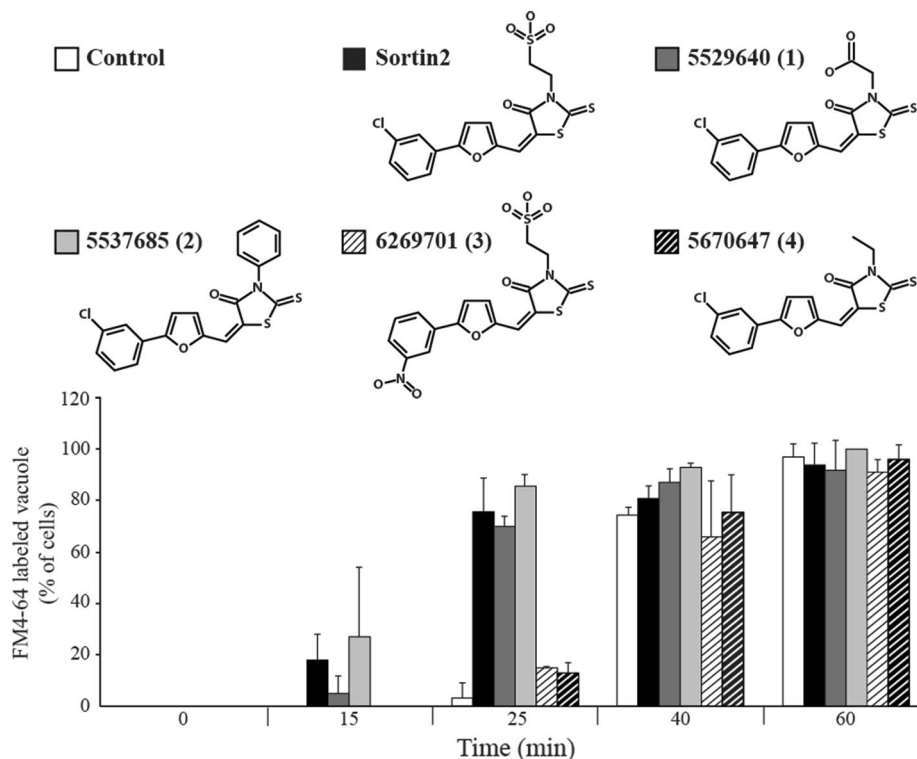


Figure 3 Enhancing of endocytic trafficking depends on Sortin2 structural features. *S. cerevisiae* parental line was grown on YPD 1% DMSO (control) and YPD supplemented with 20 μ M of different Sortin2-structural analogs. Afterwards cells were incubated with 24 μ M FM4-64 for 30 min at 4°C. Then turned to 28°C to be imaged subsequently by confocal microscopy at different incubation times. Cells with FM4-64 labeled vacuoles were scored. The number of cells with labeled vacuoles relative to the total scored population (N = 30 cells) in different times of FM4-64 incubation is informed with standard deviation.

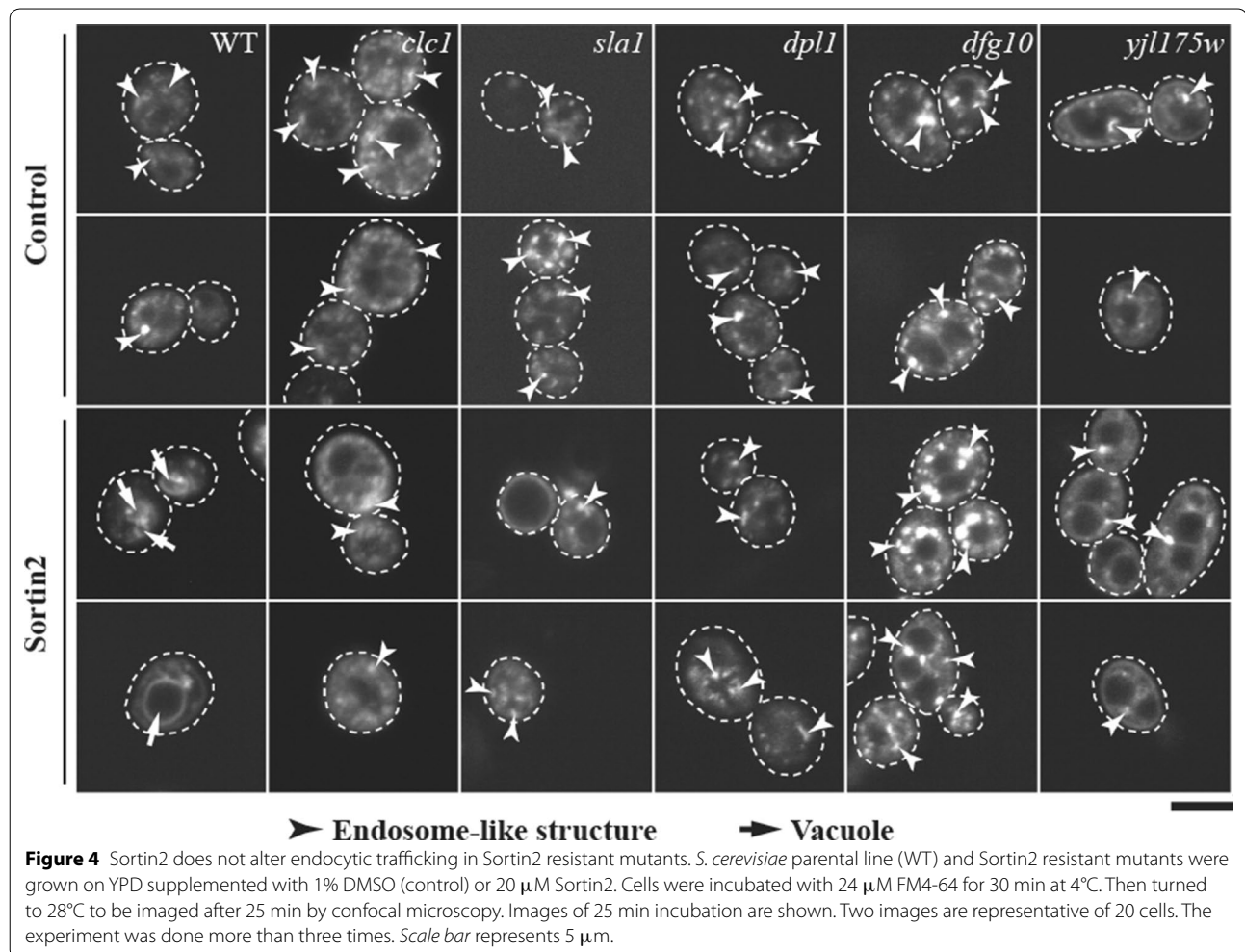
with values of 11.1- and 8.3-fold, respectively (Additional file 7: Table S2). Moreover, the “Transcription elongation”, “Actin cytoskeleton” and “G2/M transition of mitotic cell cycle” processes were also highly enriched (more than 5-fold, Additional file 7: Table S2). Regarding the cell location of the Sortin2 resistance interactome members, CellLoc categorization showed that the highest over-represented categories were “Cytoskeleton”, “Transport vesicles” and “Punctate composite” (3.9-, 2.5- and 2.7-fold, respectively; Table 2). The enrichment of the “Cytoskeleton” category corresponded mainly to the “Actin cytoskeleton” category, which was enriched nine-fold in the Sortin2-resistance interactome (Table 2).

Discussion

Using a reverse chemical genetics approach six *S. cerevisiae* mutants were identified that did not show a CPY sorting defect when treated with Sortin2. This reverse chemical screen confirmed the specificity of the effect of Sortin2 within the endomembrane system as suggested previously for genes identified in Sortin2 hypersensitive screen [14]. The most enriched biological process among

Sortin2-resistant mutants was endocytosis, and importantly, this compound affects the speed of internalization of an endocytic tracer towards the vacuole. These results show the power and consistency of genetic screens to unravel the effects of a bioactive compound and its specificity.

Sortin2-resistant mutants treated with Sortin2 did not show either CPY mistargeting or enhancing of the endocytic pathway that was observed in the wild type. This genetic evidence suggests that the Sortin2 effects of trafficking to the vacuole through the secretory system and endocytosis are linked. The Sortin2 structure–activity relationship analysis consistently supports this connection, since the Sortin2 effect on endocytosis depends on the same chemical features (see below) that have been shown for CPY trafficking [14]. As the endocytic pathway converges on the same organelle, it is foreseeable that both observed phenotypes might be due to higher trafficking rate towards to vacuole at late endosome level. Sortin2-CPY secretion could be explained by lower abundance of CPY receptor at the TGN due to its higher anterograde trafficking rate. This is consistent with the



faster traffic of FM4-64 endocytosis towards to vacuole due to Sortin2. We were unable to define precisely whether the alteration of both pathways shares the same molecular mode of action. Data from Sortin2-hypersensitive screen [14] together with the link between endocytosis and secretory pathway support that Sortin2 cellular target is located at late endosomal trafficking events.

Since *clc1*, *sla1* and *met18* resistance is observed at any tested chemical concentration the mode of action of Sortin2 could involve its binding to the missing gene product in the corresponding mutant. However the possibility that these proteins are involved in Sortin2 intracellular availability could not be rule out. In the case that the gene products interact with the bioactive molecule they may do so with the two part of Sortin2 since their loss of function mutants were resistant to 5537685 as well. In this scenario how Sortin2 affects both endocytic and secretory pathways is undetermined. Clc1 is a structural protein that allows generation of clathrin-coated vesicles (CCVs) from plasma membrane (PM) and TGN

for endocytic and secretory pathways respectively [42]. Also Sla1 has a function in endocytic CCVs formation as is present at clathrin-coated pits at plasma membrane [43]. Interestingly it has been proposed a role of SLA1 in late endosome-to-vacuole trafficking likely related to clathrin function as well [44, 45]. Based on the close functional relationship between Clc1 and Sla1 it is plausible that Sortin2 is interacting with the entire structure at the clathrin pit enhancing vesicle trafficking. In addition Met18 genetically interacts with Sla1 suggesting a related function however still unknown [46].

On the other hand, it is unlikely that YJL175W, DFG10 and DPL1 gene products would correspond to the molecular targets of Sortin2 since its deletions mutants are sensitive to Sortin2 (20 μ M and higher) on its effect on CPY trafficking. Likely in this case the lack of gene products induces a perturbation of endomembrane system which compensates the effect of Sortin2. Dfg10 participates in dolichol biosynthesis and its loss of function mutant has defects on CPY N-glycosylation [32] that could affect

Table 2 Functional and locational gene product categorization of the interactome network of genes whose deletion provokes resistance to Sortin2 in *S. cerevisiae*

	Representation on dataset			
	Sortin2 interactome (%)	Genome (%)	p-value	Enrichment in dataset (fold)
<i>Functional category</i>				
Cell fate	15.5	4.5	1.77E−13	3.5
Cell type differentiation	24.2	7.4	1.90E−19	3.3
Cell cycle and DNA processing	39.1	16.5	2.32E−20	2.4
Cellular communication/signal transduction mechanism	9.1	3.8	4.38E−05	2.4
Biogenesis of cellular components	31.1	14.0	6.35E−14	2.2
Cell rescue, defense and virulence	19.2	9.0	6.05E−08	2.1
Protein fate (folding, modification, destination)	38.0	18.8	1.55E−14	2.0
Interaction with the environment	15.2	7.6	7.12E−06	2.0
Protein with binding function or cofactor requirement (structural or catalytic)	27.5	17.1	6.42E−06	1.6
Cellular transport, transport facilities and transport routes	25.3	16.9	1.82E−04	1.5
Transcription	23.5	17.5	5.99E−03	1.3
<i>Locational category</i>				
Cytoskeleton	13.0	3.3	6.31E−13	3.9
Actin cytoskeleton	8.0	0.9	3.55E−16	9.0
Punctate composite	6.2	2.3	1.63E−04	2.7
Transport vesicles	5.8	2.3	5.50E−04	2.5
Cytoplasm	61.2	46.3	2.91E−07	1.3
Nucleus	46.3	34.8	3.46E−05	1.3

Category representation of the abundance within the Sortin2-resistance interactome network (dataset 273 genes) and the *S. cerevisiae* genome (6131 genes). The p-value was calculated using the hypergeometric distribution as the statistical test. $p < 0.005$ was considered as significant.

its secretion. Thus, Dfg10 deficiency could cause slower rate of CPY secretion therefore higher dose of Sortin2 is required to trigger the same effect. Furthermore the partial resistance of *dpl1* could be explained by compensation effect on protein trafficking. *dpl1* accumulates phytosphingosine-1-phosphate (PHS1P) which is the substrate Dpl1 metabolizes [35]. PHS1P has a signaling role in the cell affecting gene transcriptional level, which includes genes involved in protein sorting and targeting cellular process [47]. Therefore, the lack of Dpl1 could alter transcription levels of protein trafficking genes compensating Sortin2 effect over trafficking pathways mediated by PHS1P accumulation.

The physical and genetic interactome analysis revealed that one of the most enriched GO processes was “vesicular cellular import” (8.3-fold enrichment) in which all genes belong to the term “endocytosis”. This result supports our observations of FM4-64 internalization and confirms that most likely the still undetermined molecular targets of Sortin2 are related to the cellular trafficking pathways. Moreover, interactome GO component classification revealed that of all possible cellular components, only five locations had significant representation on the

Sortin2-resistance dataset. Three of these are involved in or related to endomembrane system components; cytoskeleton, punctate composite and transport vesicles. The high representation of “DNA processing and transcription elongation GO function” is consistent with the presence of MET18 within genes whose deletion confers resistance to Sortin2. In addition, high representation of these cellular functions correlates with the GO component, showing that nuclear location is represented in the dataset. However how these types of GO molecular processes and MET18 function are related to protein trafficking still remains unclear. Interestingly, several proteins involved in the endocytic process have been also related to chromatin remodeling, transcription and cell division functions supporting that those processes are somehow related [48, 49]. These findings may provide an explanation for highly represented processes in our interactome analysis and support that Sortin2 is affecting mainly endocytosis and/or endocytic-related processes.

Analyzing the structure–bioactivity relationship of Sortin2 provided insight into the molecular mechanism of its mode of action. The Sortin2 analog that lacks the sulfonate group on Sortin2 causes no effect in the endocytosis time

frame. Replacing the sulfonate group with a group with a dense electron cloud such the benzoic ring or carboxyl group restituted Sortin2 effect on endocytosis. However, compound 6269701 did not affect the endocytosis, showing the importance of the chloride in the chlorobenzene ring. It is possible that rather than chloride itself being important, the lack of bioactivity is due to steric hindrance of the nitro group. Therefore, the effect of Sortin2 on endocytosis depends on these two parts of the molecule, the sulfonate group and the chlorobenzene ring.

Interestingly, for both biological effects of Sortin2 on endomembrane trafficking, the same structural features of Sortin2 are required. For triggering the secretion of CPY, it was shown that both structural features of Sortin2, the sulfonate and the chlorobenzene ring are equally necessary [14]. Consistently, chemical 6269701 was also inactive for CPY trafficking [14]. Overall, the analysis of Sortin2 functional structure features strongly support a link between its effect on trafficking to the vacuole and the endocytic pathway.

Regarding Sortin2 as a tool for research, we would like to stress that this novel compound has a distinct biological value since it activates specifically the endocytic trafficking towards the vacuole while many discovered drugs block or inhibit cellular processes within endomembrane system. This compound is also very specific, affecting a restrictive set of cellular components. The power of using such a biological modulator has been proved by the extensive use of bioactive compounds in cell biology.

Conclusions

Critical *S. cerevisiae* proteins for the mode of action of Sortin2 have been identified by means of reverse chemical-genetics approach. Endocytosis is the principal biological process targeted by Sortin2 base on mutant phenotypes, GO annotation and the interactome of the six ORFs whose deletion caused Sortin2 resistance. In fact Sortin2 treatment enhanced trafficking of the endocytic tracer FM4-64 toward the vacuole supporting the consistence of the genetic data. Overall the link of the Sortin2 effect of on the secretory pathway and its effect on endocytosis is supported by the genetic, cellular and chemical data in *S. cerevisiae*.

Methods

Chemical treatments

Sortin2 and its related structures were obtained from ChemBridge (San Diego, CA, USA); the latter are referred to here by the identification numbers assigned by the manufacturer. *S. cerevisiae* were grown in regular Yeast Peptone Dextrose (YPD) liquid or solid (1.5% agar). Single yeast colonies were picked from YPD-agar plates, inoculated in liquid YPD and grown for 48 h at

28°C with constant shaking to generate an initial culture for the assays. Chemical treatments were performed in medium supplemented with the designated compounds or 1% DMSO as a negative control. Cultures were grown with the chemical compound for 72 h at 28°C. To evaluate the effect of Sortin2 on yeast growth performance, Sortin2-resistant strain cultures at equal initial optical density ($OD_{600} = 0.2$) were grown in YPD supplemented with 20 μ M Sortin2 or 1% DMSO at 28°C. Subsequently OD_{600} was measured at different times. For evaluating cell viability, a fraction of cells grown in these conditions for 72 h were diluted 1 to 100,000 and plated on YPD on triplicates. Colony-forming unit (CFU) were scored after 2 days. The assay was repeated twice.

Sortin2 resistance screening

The primary screen was performed using the *S. cerevisiae* haploid deletion library that contains 4,800 yeast strains generated from the BY4742 parental strain (MAT α *his3 Δ 1 leu2 Δ 0 lys2 Δ 0 ura3 Δ 0*; Open Biosystems, Huntsville, AL, USA). The strains ($OD_{600} = 0.2$) were grown in darkness in YPD liquid medium supplemented with 47 μ M Sortin2 and 1% DMSO, in a microplate format. After 72 h, growth medium was collected and analyzed for secreted CPY as described previously [10] using alkaline phosphatase labeled secondary antibody. All the deletion strains that did not secrete CPY due to Sortin2 in the primary screen were analyzed for CPY secretion at increasing concentrations of Sortin2 (5, 10, 20 and 40 μ M). This assay was performed using peroxidase labeled secondary antibody to enhance its sensitivity and it was repeated three times. Mutants were considered as resistant to Sortin2 if CPY secretion was not detected at concentrations less than or equal to 10 μ M because this was the concentration that trigger secretion of CPY in the wild type strain using peroxidase detection.

FM4-64 endocytosis assay

Yeast cultures ($OD_{600} = 0.2$) were grown with 20 μ M of chemical compound and 1% DMSO for 72 h at 28°C in darkness with constant shaking. Cell cultures were centrifuged at 5,000 rpm for 4 min and re-suspended in fresh growth medium. Cells were incubated with 24 μ M FM4-64 (Invitrogen) at 4°C for 30 min. Subsequently, the FM4-64-containing medium was replaced with fresh YPD medium and cultures was incubated at 28°C. To observe FM4-64 distribution, 5 μ l of the suspension were placed on a slide pretreated with 1 mg/ml Concanavalin A. Endocytosis of FM4-64 was examined at 0, 15, 25, 40 and 60 min at 28°C using Zeiss LSM 510 confocal microscope with a 543 nm emission filter. Approximately 25 cells were observed for each condition. The experiment was repeated three times; representative images are shown.

Bioinformatic analysis

To retrieve information about gene annotation, gene products, gene ontology (GO) and mutant phenotypes of each ORF, the *Saccharomyces* Genome Database (SGD, <http://www.yeastgenome.org/>) was queried. The interactome network was obtained by submitting the query gene products to the OSPREY 1.2.0 software platform [41]. Function and localization of gene products of the interactome network were categorized using the FunCat and CellLoc classification systems from The Munich Information Center for Protein Sequences (MIPS, <http://www.mips.gsf.de>).

Additional files

Additional file 1: Table S1. *Saccharomyces* deletion strains selected on the Sortin 2 primary screen. All the 36 deletion mutants selected as Sortin2 resistant in the primary screen are listed. They were tested on a secondary screen for Sortin2 resistance classifying them as according wild type behavior (Wt) and resistant to Sortin2 (R). Results on the secondary screen were judged based on the behavior of experimental repetitions (Number of repetitions).

Additional file 2: Figure S1. Sortin2 short time treatment does not inhibit growth of Sortin2 resistant mutants. *S. cerevisiae* parental line (WT) and Sortin2 resistant mutants were grown on YPD supplemented with 1% DMSO (control) and YPD supplemented with 47 μ M Sortin2 (Sortin2). Growth performance was evaluated by OD₆₀₀ at different incubation times. The assay was repeated twice with experimental triplicates.

Additional file 3: Figure S2. Sortin2 does not affect viability of Sortin2 resistant mutants. *S. cerevisiae* parental line (WT) and Sortin2 resistant mutants were grown on YPD supplemented with 1% DMSO (control) and YPD supplemented with 20 μ M Sortin2 (Sortin2) for 72 h. Number of cells were evaluated by measuring OD₆₀₀ (A). A fraction of cells in every condition were plated in YPD medium to analyze viability. The results were expressed as colony-forming unit (CFU) for every 10⁸ cells (B) as well as a percentage of viability (C). Statistical significance was evaluated with Student's *t* test (**p* < 0.05, ***p* < 0.01).

Additional file 4: Figure S3. *sla1* is sensitive to three different CPY-secretion triggering compounds. Parental (WT) and *sla1* strains were grown in YPD medium supplemented with the indicated concentrations of Sortin2, furan, Brefeldin A and Endosidin1. The control condition (0 μ M Sortin2) contained 1% DMSO. The presence of CPY was analyzed on the growth medium by dot-blot using a CPY monoclonal antibody.

Additional file 5: Figure S4. Figure 3. Enhancing of endocytic trafficking depends on Sortin2 structural features. *S. cerevisiae* parental line was grown on YPD 1% DMSO (control) and YPD supplemented with 20 μ M of different Sortin2-structural analogs. Afterwards cells were incubated with 24 μ M FM4-64 for 30 min at 4°C. Then turned to 28°C to be imaged subsequently by confocal microscopy at different incubation times. Images of twenty-five min incubation are shown. Two images are representative of 20 cells. The experiment was performed more than 3 times. Scale bar represents 5 μ m.

Additional file 6: Figure S5. FM4-64 reaches the vacuole in Sortin2 resistant mutants. *S. cerevisiae* parental line (WT) and Sortin2 resistant mutants were grown on YPD (control) and YPD supplemented with 20 μ M Sortin2. Cells were incubated with 24 μ M FM4-64 for 30 min at 4°C. After 40 (A) and 60 (B) min at 28°C, cells were imaged by confocal microscopy. Images are representative of 20 cells. Scale bar represents 5 μ m.

Additional file 7: Table S2. Functional and locational gene product categorization of interactome network of genes whose deletion provokes resistance to Sortin2 in *S. cerevisiae*. Category representation of the abundance within the Sortin2-resistance interactome network dataset (273 genes) and the *S. cerevisiae* genome (6,131 genes). *p* < 0.005 was considered as significant.

Authors' contributions

JZ and LN performed the *S. cerevisiae* Sortin2 resistant screening. BV-S, NM, MC-A and LN carried out the cellular experiments of the effect of Sortin2 and its analogs on wild type as well in Sortin2 resistant mutants. They also contributed on critically manuscript reviewing. BV-S was primary in charge of writing the manuscript along with LN. JZ and NVR have been involved on designing the chemical genetics strategy, drafting the manuscript and critically reviewing it. All authors read and approved the final manuscript.

Author details

¹ Plant Molecular Biology Centre, Department of Biology, Faculty of Sciences, University of Chile, Las Palmeras 3425 Ñuñoa, Santiago, Chile. ² Centro de Biotecnología y Genómica de Plantas, Universidad Politécnica de Madrid, Madrid, Spain. ³ Center for Plant Cell Biology, Department of Botany and Plant Sciences, University of California, Riverside, CA 92521, USA.

Acknowledgements

We thank Drs. Daniela C. Urbina and Glenn R. Hicks for helpful discussion and critical reading of the manuscript. We acknowledge for helpful discussions all the members of the Plant Molecular Laboratory, University of Chile.

Compliance with ethical guidelines

Competing interests

The authors declare that they have no competing interests.

Funding

FONDECYT 11080240 and 1120289 (to BV-S, NM, MC-A and LN), PCB-MN P006-065-F (to NM and LN) and NSF MCB0515963 (to JZ and NVR).

Received: 5 February 2015 Accepted: 14 July 2015

Published online: 25 July 2015

References

- Surpin M, Raikhel N. Traffic jams affect plant development and signal transduction. *Nat Rev Mol Cell Biol*. 2004;5:100–9.
- Emery G, Knoblich JA. Endosome dynamics during development. *Curr Opin Cell Biol*. 2006;18(4):407–15.
- Schreiber SL. Chemical genetics resulting from a passion for synthetic organic chemistry. *Bioorg Med Chem*. 1998;6:1127–52.
- Lokey RS. Forward chemical genetics: progress and obstacles on the path to a new pharmacopoeia. *Curr Opin Chem Biol*. 2003;7:91–6.
- Rix U, Superti-Furga G. Target profiling of small molecules by chemical proteomics. *Nat Chem Biol*. 2009;5:616–24.
- Roemer T, Davies J, Giaever G, Nislow C. Bugs, drugs and chemical genomics. *Nat Chem Biol*. 2012;8:46–56.
- Chan TF, Carvalho J, Riles L, Zheng XF. A chemical genomics approach toward understanding the global functions of the target of rapamycin protein (TOR). *Proc Natl Acad Sci USA*. 2000;97:13227–32.
- Giaever G, Flaherty P, Kumm J, Proctor M, Nislow C, Jaramillo DF, et al. Chemogenomic profiling: identifying the functional interactions of small molecules in yeast. *Proc Natl Acad Sci USA*. 2004;101:793–8.
- Butcher RA, Schreiber SL. Identification of Ald6p as the target of a class of small-molecule suppressors of FK506 and their use in network dissection. *Proc Natl Acad Sci USA*. 2004;101:7868–73.
- Zouhar J, Hicks GR, Raikhel NV. Sorting inhibitors (Sortins): chemical compounds to study vacuolar sorting in Arabidopsis. *Proc Natl Acad Sci USA*. 2004;101:9497–501.
- Rothman JH, Howald I, Stevens TH. Characterization of genes required for protein sorting and vacuolar function in the yeast *Saccharomyces cerevisiae*. *EMBO J*. 1989;8:2057–65.
- Roberts CJ, Nothwehr SF, Stevens TH. Membrane protein sorting in the yeast secretory pathway: evidence that the vacuole may be the default compartment. *J Cell Biol*. 1992;119:69–83.
- Bowers K, Stevens TH. Protein transport from the late Golgi to the vacuole in the yeast *Saccharomyces cerevisiae*. *Biochim Biophys Acta*. 2005;1744:438–54.

14. Norambuena L, Zouhar J, Hicks GR, Raikhel NV. Identification of cellular pathways affected by Sortin2, a synthetic compound that affects protein targeting to the vacuole in *Saccharomyces cerevisiae*. *BMC Chem Biol*. 2008;8:1.
15. Raymond CK, Howald-Stevenson I, Vater CA, Stevens TH. Morphological classification of the yeast vacuolar protein sorting mutants: evidence for a prevacuolar compartment in class E vps mutants. *Mol Biol Cell*. 1992;3:1389–402.
16. Bonangelino CJ, Nau JJ, Duex JE, Brinkman M, Wurmser AE, Gary JD, et al. Osmotic stress-induced increase of phosphatidylinositol 3,5-bisphosphate requires Vac14p, an activator of the lipid kinase Fab1p. *J Cell Biol*. 2002;156:1015–28.
17. Warren DT, Andrews PD, Gourlay CW, Ayscough KR. Sla1p couples the yeast endocytic machinery to proteins regulating actin dynamics. *J Cell Sci*. 2002;115:1703–15.
18. Stamenova SD, French ME, He Y, Francis SA, Kramer ZB, Hicke L. Ubiquitin binds to and regulates a subset of SH3 domains. *Mol Cell*. 2007;25:273–84.
19. UniProt-GOA. Gene Ontology annotation based on manual assignment of UniProtKB keywords in UniProtKB/Swiss-Prot entries. *Saccharomyces Genome Database*. 2011.
20. DDB, FB, MGI, GOA, ZFIN curators. Gene Ontology annotation through association of InterPro records with GO terms. *Personal Communication to Saccharomyces Genome Database*. 2001.
21. Pruyne D, Bretscher A. Polarization of cell growth in yeast. *J Cell Sci*. 2000;113(Pt 4):571–85.
22. Howard JP, Hutton JL, Olson JM, Payne GS. Sla1p serves as the targeting signal recognition factor for NPFX(1,2)D-mediated endocytosis. *J Cell Biol*. 2002;157:315–26.
23. Ayscough KR, Eby JJ, Lila T, Dewar H, Kozminski KG, Drubin DG. Sla1p is a functionally modular component of the yeast cortical actin cytoskeleton required for correct localization of both Rho1p-GTPase and Sla2p, a protein with talin homology. *Mol Biol Cell*. 1999;10:1061–75.
24. Gardiner FC, Costa R, Ayscough KR. Nucleocytoplasmic trafficking is required for functioning of the adaptor protein Sla1p in endocytosis. *Traffic*. 2007;8:347–58.
25. Narayanaswamy R, Moradi EK, Niu W, Hart GT, Davis M, McGary KL, et al. Systematic definition of protein constituents along the major polarization axis reveals an adaptive reuse of the polarization machinery in pheromone-treated budding yeast. *J Proteome Res*. 2009;8:6–19.
26. Pishvaei B, Munn A, Payne GS. A novel structural model for regulation of clathrin function. *EMBO J*. 1997;16:2227–39.
27. Newpher TM, Lemmon SK. Clathrin is important for normal actin dynamics and progression of Sla2p-containing patches during endocytosis in yeast. *Traffic*. 2006;7:574–88.
28. Masselot M, De Robichon-Szulmajster H. Methionine biosynthesis in *Saccharomyces cerevisiae*. I. Genetical analysis of auxotrophic mutants. *Mol Gen Genet*. 1975;139:121–32.
29. Kou H, Zhou Y, Gorospe RM, Wang Z. Mms19 protein functions in nucleotide excision repair by sustaining an adequate cellular concentration of the TFIIH component Rad3. *Proc Natl Acad Sci USA*. 2008;105:15714–9.
30. Lauder S, Bankmann M, Guzder SN, Sung P, Prakash L, Prakash S. Dual requirement for the yeast MMS19 gene in DNA repair and RNA polymerase II transcription. *Mol Cell Biol*. 1996;16:6783–93.
31. Huh WK, Falvo JV, Gerke LC, Carroll AS, Howson RW, Weissman JS, et al. Global analysis of protein localization in budding yeast. *Nature*. 2003;425:686–91.
32. Cantagrel V, Lefeber DJ, Ng BG, Guan Z, Silhavy JL, Bielas SL, et al. SRD5A3 is required for converting polyprenol to dolichol and is mutated in a congenital glycosylation disorder. *Cell*. 2010;142:203–17.
33. Mosch HU, Fink GR. Dissection of filamentous growth by transposon mutagenesis in *Saccharomyces cerevisiae*. *Genetics*. 1997;145:671–84.
34. De Hertogh B, Carvajal E, Talla E, Dujon B, Baret P, Goffeau A. Phylogenetic classification of transporters and other membrane proteins from *Saccharomyces cerevisiae*. *Funct Integr Genomics*. 2002;2:154–70.
35. Saba JD, Nara F, Bielawska A, Garrett S, Hannun YA. The BST1 gene of *Saccharomyces cerevisiae* is the sphingosine-1-phosphate lyase. *J Biol Chem*. 1997;272:26087–90.
36. Birchwood CJ, Saba JD, Dickson RC, Cunningham KW. Calcium influx and signaling in yeast stimulated by intracellular sphingosine 1-phosphate accumulation. *J Biol Chem*. 2001;276:11712–8.
37. Gottlieb D, Heideman W, Saba JD. The DPL1 gene is involved in mediating the response to nutrient deprivation in *Saccharomyces cerevisiae*. *Mol Cell Biol Res Commun*. 1999;1:66–71.
38. Mukhopadhyay D, Howell KS, Riezman H, Capitani G. Identifying key residues of sphinganine-1-phosphate lyase for function in vivo and in vitro. *J Biol Chem*. 2008;283:20159–69.
39. Burston HE, Maldonado-Baez L, Davey M, Montpetit B, Schluter C, Wendland B, et al. Regulators of yeast endocytosis identified by systematic quantitative analysis. *J Cell Biol*. 2009;185:1097–110.
40. Vida TA, Emr SD. A new vital stain for visualizing vacuolar membrane dynamics and endocytosis in yeast. *J Cell Biol*. 1995;128:779–92.
41. Breitkreutz BJ, Stark C, Tyers M. Osprey: a network visualization system. *Genome Biol*. 2003;4:R22.
42. Brodsky FM, Chen CY, Knuehl C, Towler MC, Wakeham DE. Biological basket weaving: formation and function of clathrin-coated vesicles. *Annu Rev Cell Dev Biol*. 2001;17:517–68.
43. Carroll SY, Stimpson HE, Weinberg J, Toret CP, Sun Y, Drubin DG. Analysis of yeast endocytic site formation and maturation through a regulatory transition point. *Mol Biol Cell*. 2012;23(4):657–68.
44. Gabrieli G, Kama R, Gerst JE. Involvement of specific COPI subunits in protein sorting from the late endosome to the vacuole in yeast. *Mol Cell Biol*. 2007;27(2):526–40.
45. Jarmoszewicz K, Łukasiak K, Riezman H, Kaminska J. Rsp5 ubiquitin ligase is required for protein trafficking in *Saccharomyces cerevisiae* COPI mutants. *PLoS One*. 2012;7(6):e39582.
46. Collins SR, Miller KM, Maas NL, Roguev A, Fillingham J, Chu CS, et al. Functional dissection of protein complexes involved in yeast chromosome biology using a genetic interaction map. *Nature*. 2007;446(7137):806–10.
47. Cowart LA, Shotwell M, Worley ML, Richards AJ, Montefusco DJ, Hannun Y, et al. Revealing a signaling role of phytosphingosine-1-phosphate in yeast. *Mol Syst Biol*. 2010;6:349.
48. Pilecka I, Banach-Orłowska M, Miaczynska M. Nuclear functions of endocytic proteins. *Eur J Cell Biol*. 2007;86:533–47.
49. Scita G, Di Fiore PP. The endocytic matrix. *Nature*. 2010;463:464–73.

Submit your next manuscript to BioMed Central and take full advantage of:

- Convenient online submission
- Thorough peer review
- No space constraints or color figure charges
- Immediate publication on acceptance
- Inclusion in PubMed, CAS, Scopus and Google Scholar
- Research which is freely available for redistribution

Submit your manuscript at
www.biomedcentral.com/submit

