

UCLA
Contemporary Music Score Collection

Title

Blue Ridge

Permalink

<https://escholarship.org/uc/item/0vj8z3bc>

Author

Gray, Alex

Publication Date

2020

alex ring gray

BLUE RIDGE

for orchestra

2019



SIDEREAL MESSENGER MUSIC

*STILL and calm,
In purple robes of kings,
The low-lying mountains sleep at the edge of the world.
The forests cover them like mantles;
Day and night
Rise and fall over them like the wash of waves.*

*Asleep, they reign.
Silent, they say all.
Hush me, O slumbering mountains—
Send me dreams.*

—Harriet Monroe, “The Blue Ridge”

INSTRUMENTATION

2 Flutes
Oboe
Cor Anglais
Clarinet in B \flat
Bass Clarinet in B \flat
Bassoon
Contrabassoon

4 Horns in F
2 Trumpets in C
2 Trombones
Tuba

Percussion:
1 – Mountain Dulcimer, Crotales
2 – Mandolin, Vibraphone
3 – Banjo, Marimba, Concert Bass Drum
4 – Guitar, Timpani

Harp
Piano

Strings

duration: c. 13'

PERFORMANCE NOTES

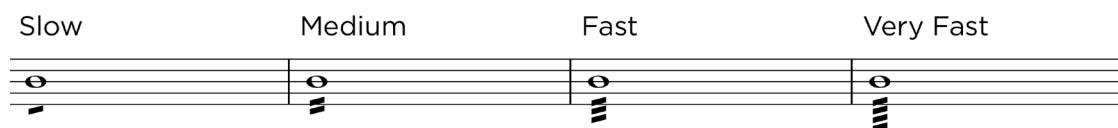
Percussion - Appalachian String Instruments

Appalachian string instruments should be amplified with a pickup or microphone, and locally placed speakers. The instruments should lie upon trap tables, and never *need* to be picked up. However, the players may opt to hold them traditionally when strumming and picking. They are bowed for a large portion of the piece.

Percussionists are never asked to perform fretted notes — the few specified pitches are all open strings or their natural harmonics. There is no need to learn the note positions on the neck.

Tremolo

All tremolo should be performed unmeasured and unsynchronized among sections. Tremolos are broken into four categories: *slow*, *medium*, *fast*, and *very fast*. This corresponds to the number of slashes on the given note(s), as such:



Aleatoric Open String Pizzicato

Sections marked “open strings at random” should be played unsynchronized among sections and without a sense of pulse.

Feathered Beaming

Feathered beams indicate a gradual increase or decrease in speed. These should be performed unmeasured, and unsynchronized among sections.



Open String Arpeggio with Glissando

A continuous glissando on one string while continuing to arpeggiate across all 4 strings, three of which are open. The sliding string features headless-stems with occasional reference points, as such:



Timed Figures

The conductor will cue any change of material in figures measured in seconds. In figure F, there are numbered cues for each change.

BLUE RIDGE

I. clingmans dome

ALEX RING GRAY

The score is divided into two sections: a 10-measure section and a 20-measure section. Percussion 1 (Mountain Dulcimer) and Percussion 2 (Mandolin) enter in the 20-measure section. Percussion 3 (Banjo) and Percussion 4 (Acoustic guitar) enter in the 10-measure section. The Piano part features a steady eighth-note accompaniment in the left hand and a sustained chord in the right hand.

Percussion 1: Mountain Dulcimer
Bow open strings, droning; unsynchronized with section
pp

Percussion 2: Mandolin
Bow open strings, droning; unsynchronized with section
pp

Percussion 3: Banjo
Bow open strings, droning; unsynchronized with section
pp

Percussion 4: Acoustic guitar (steel string)
Bow open strings, droning; unsynchronized with section
pp

Piano
♩ = 90
pp
Ped. sustain pedal depressed for entirety of piece

A ♩ = 90

Flute 1

Flute 2

Oboe

English Horn in F

Clarinet in B \flat

Bass Clarinet in B \flat

Bassoon

Contrabassoon

Horn in F 1.3

Horn in F 2.4

Trumpet in C 1.2

Trombone 1.2

Tuba

A ♩ = 90

Timpani

Percussion 1

Percussion 2

Percussion 3

Percussion 4

Piano *pp*

Harp

A ♩ = 90

Violin I

Violin II

Viola

Violoncello *sul tasto* *pp*

Contrabass

7

Perc. 1

Perc. 2

Perc. 3

Perc. 4

Pno.

Hp.

Vc.

Cb.

pp

11

B

B. Cl.

Bsn.

Cbsn.

legato

pp

B

Perc. 1

Perc. 2

Perc. 3

Perc. 4

Pno.

Hp.

B

Vln. II

Vla.

Vc.

Cb.

sul tasto

pp

15

Fl. 1

Fl. 2

Ob.

E. H.

Cl.

B. Cl.

Bsn.

Cbsn.

Perc. 1

Perc. 2

Perc. 3

Perc. 4

Pno.

Hp.

Vln. I

Vln. II

Vla.

Vc.

Cb.

legato 3 *pp* 3 3 3 3

legato 5 *pp* 5 5 5 5

pp 3

p *p*

pp *sul tasto* *pp* *ord.* *sul pont.*

79

Fl. 1 *legato*

Fl. 2 *legato* *mp*

Ob. *legato* *pp* *mp*

E. H. *3*

Cl. *5*

B. Cl.

Bsn. *3*

Cbsn.

Perc. 1 *p*

Perc. 2

Perc. 3

Perc. 4 *mp*

Harmonic slide up and down neck

Pno. *mp*

Hp.

Vln. I

Vln. II

Vla.

Vc.

Cb. *ord.*

23

Fl. 1 *pp*

Fl. 2 *pp*

Ob. *mp* *pp*

E. H. *mp* *pp*

Cl. *mp*

B. Cl. *mp*

Bsn. *mp*

Cbsn.

Perc. 1

Perc. 2 *mp*

Perc. 3 *mp*

Perc. 4

Pno.

Hp. *mp*

Vln. I *mp* *ord.* *pp* *sul tasto*

Vln. II *mp* *ord.* *pp* *sul tasto*

Vla. *mp* *ord.*

Vc. *mp* *ord.*

Cb. *ord.*

This page of a musical score contains the following parts and markings:

- Flutes:** Fl. 1 and Fl. 2, both playing a steady eighth-note pattern.
- Woodwinds:**
 - Ob.**: Octave G major scale with a *7* fingering.
 - E. H.**: Triplet eighth-note patterns.
 - Cl.**: Quintuplet eighth-note patterns.
 - B. Cl.**: *pp* dynamic, playing a steady eighth-note pattern.
 - Bsn.**: Triplet eighth-note patterns, with *mp* and *pp* markings.
 - Cbsn.**: *mp* dynamic, playing a steady eighth-note pattern.
- Percussion:**
 - Perc. 1**: *mp* and *p* dynamics, playing a pattern of two pairs of mallets.
 - Perc. 2**: *To Vibraphone (soft mallets)*.
 - Perc. 3**: *To Marimba (soft mallets)*.
 - Perc. 4**: *p* dynamic, playing a complex mallet pattern.
- Piano (Pno.)**: Playing a steady eighth-note accompaniment.
- Harp (Hp.)**: Playing a steady eighth-note accompaniment.
- Violins:** Vln. I and Vln. II, playing a steady eighth-note accompaniment.
- Viola (Vla.)**: *pp* dynamic, playing a steady eighth-note accompaniment.
- Violoncello (Vc.)**: *pp* dynamic, playing a steady eighth-note accompaniment.
- Double Bass (Cb.)**: *mp* dynamic, playing a steady eighth-note accompaniment. Includes markings for *sul pont.* and *ord.*

31

Fl. 1

Fl. 2

Ob.

E. H.

Cl.

B. Cl.

Bsn.

Cbsn.

Perc. 1

Perc. 2

Perc. 3

Perc. 4

Pno.

Hp.

Vln. I

Vln. II

Vla.

Vc.

Cb.

pp

mp

ord.

poco accel. **C** ♩=100

35

Fl. 1

Fl. 2

Ob.

E. H.

Cl.

B. Cl.

Bsn.

Cbsn.

legato

legato

p

poco accel. **C** ♩=100

Perc. 1

Perc. 2

Perc. 3

Perc. 4

mp

pp

pp

mp

pp

mp

To Timpani

Pno.

Hp.

pp

pp

poco accel. **C** ♩=100

Vln. I

Vln. II

Vla.

Vc.

Cb.

mp

pp

sul pont.

ord.

3

39

Fl. 1

Fl. 2

Ob.

E. H.

Cl.

B. Cl.

Bsn.

Cbsn.

Perc. 1

Perc. 2

Perc. 3

Pno.

Hp.

Vln. I

Vln. II

Vla.

Vc.

Cb.

legato

p

mp

pp

ord.

Detailed description of the musical score: This page contains measures 39 through 42 of a symphonic score. The woodwind section includes Flutes 1 and 2 (resting), Oboe (resting), English Horn (triplets in measure 42), Clarinet (legato line with a fifth fingering in measures 40-42), Bass Clarinet (legato line, piano), Bassoon (triplets, piano), and Contrabassoon (quarter notes). The percussion section consists of three parts: Perc. 1 (triangles), Perc. 2 (cymbals, dynamic mp to pp), and Perc. 3 (tom-toms, dynamic pp to mp). The piano (Pno.) and harp (Hp.) play a continuous sixteenth-note accompaniment. The string section (Vln. I, Vln. II, Vla., Vc., Cb.) features a rhythmic pattern of eighth notes with slurs, and the Violin I and II parts include dynamic markings (p) and 'ord.' (ordine) markings in measure 42.

43

Fl. 1

Fl. 2

Ob.

E. H.

Cl.

B. Cl.

Bsn.

Cbsn.

Perc. 1

Perc. 2

Perc. 3

Pno.

Hp.

Vln. I

Vln. II

Vla.

Vc.

Cb.

legato

p

mf

pp

mp

ord.

Detailed description of the musical score: This page contains the musical score for measures 43-46. The woodwind section includes Flute 1 (resting), Flute 2 (legato eighth-note pattern), Oboe (legato eighth-note pattern with 7-measure slurs), English Horn (piano triplet eighth-note pattern), Clarinet (5-measure slurs), Bass Clarinet, Bassoon (3-measure slurs), and Contrabassoon. The percussion section features three parts: Perc. 1 (mf, triangle pattern), Perc. 2 (mp, pp, mp, p, tom patterns), and Perc. 3 (pp, mp, pp, mp, tom patterns). The piano part consists of a continuous eighth-note accompaniment in both hands. The harp part features a similar eighth-note accompaniment. The string section includes Violin I and II (sixteenth-note patterns), Viola (piano, with 'ord.' marking), Violoncello (piano, with 'ord.' marking), and Contrabass (triplet eighth-note pattern).

D

legato

47

Fl. 1 *mf* *p*

Fl. 2 *mf* *p*

Ob. *mf* *p*

E. H. *mf* *p*

Cl. *mf*

B. Cl. *mf*

Bsn. *mf*

Cbsn.

Hn. 1.3 *mf*

Hn. 2.4 *mf*

C Tpt. *mf*

Tbn. 1.2 *mf* 1. 2.

Tba. *mf*

D

Timp. *mf*

Perc. 1 *(maintain overpressure)*

Perc. 2 *mf p mf p mf*

Perc. 3 *p mf p mf p*

Pno. *mf*

Hp. *mf*

D

Vln. I *mf*

Vln. II *mf*

Vla. *mf*

Vc. *mf*

Cb. *mf*

56

Fl. 1

Fl. 2

Ob.

E. H.

Cl.

B. Cl.

Bsn.

Cbsn.

Hn. 1.3
3. legato
p

Hn. 2.4
4. legato
p

C Tpt.

Tbn. 1.2
1. legato

Tba.
legato

Timp.

Perc. 1

Perc. 2
p

Perc. 3
mf

Pno.

Hp.

Vln. I

Vln. II

Vla.

Vc.

Cb.
3

59

Fl. 1
Fl. 2
Ob.
Hn. 1.3
Hn. 2.4
C Tpt.
Tbn. 1.2
Tba.
Timp.
Perc. 1
Perc. 2
Perc. 3
Pno.
Hp.
Vln. I
Vln. II
Vla.
Vc.
Cb.

p
mf
p
mf
p
mf
p
mf
p
mf
p
mf
p
mf
p
mf
p
mf
p
mf
p
mf

3.
4.
1.
2.
3.

sul tasto
sul tasto

Detailed description of the musical score: This page contains the musical score for measures 59 through 62. The instrumentation includes Flute 1 and 2, Oboe, Horns (1, 2, 3, 4), Trumpet, Trombone, Tuba, Timpani, three types of Percussion (Perc. 1, 2, 3), Piano, Harp, Violins I and II, Viola, Violoncello, and Contrabass. Measures 59 and 60 feature a complex rhythmic pattern with triplets and sixteenth notes in the woodwinds and brass. The Percussion section has a dynamic pattern of *mf*, *p*, *mf*, *p* across the four measures. The Piano and Harp play a continuous sixteenth-note accompaniment. The string section (Violins, Viola, Cello, and Double Bass) plays a sixteenth-note texture, with Violins I and II marked *p* and *sul tasto* starting in measure 61.

63 E

Hn. 1.3

Hn. 2.4

C Tpt.

Tbn. 1.2

Tba.

To Guitar E

Timp.

Perc. 1 *p* Open strings

Perc. 2 *mf* *p* *mf* *p*

Perc. 3 *p* *mf* *p* *mf*

Pno.

Hp.

Vln. I E

Vln. II

Vla. *p* *→ sul tasto*

Vc. *p* *→ sul tasto*

Cb. *p* *→ sul tasto*

67

Perc. 1 *l.v.*

Perc. 2 *mf*

Perc. 3 *p* *mf*

To Mandolin

To Banjo

Pno.

Hp. *p* *l.v.*

Vln. I

Vln. II

Vla.

Vc.

Cb.

71

Perc. 1

Pno.

Hp. *l.v.*

Vln. I

Vln. II

Vla.

Vc.

Cb.

75 *poco rit.*

Perc. 1

Perc. 3

Perc. 4

Pno.

Vla.

Vc.

Cb.

Pluck open strings at random

p

poco rit.

ord.

78

Perc. 1

Perc. 2

Perc. 3

Perc. 4

Pno.

Cb.

Pluck open strings at random

p

l.v.

♩ = 90

II. mount craig

F1 *free* 5" **F2** 5"

82

Perc. 1

Perc. 2

Perc. 3

Perc. 4

Hp. *p* *Pluck strings at random (all natural)*

Vln. I *free* *Open string pizz. at random* *p*

Cb.



F3 5" **F4** 5"

86

Perc. 1

Perc. 2

Perc. 3

Perc. 4

Hp.

Vln. I

Vln. II *Open string pizz. at random* *p*

Vla. *Open string pizz. at random* *p*

F5

8"

F6

5"

90

Perc. 1

Perc. 2

Perc. 3

Perc. 4

Hp.

Vln. I

Vln. II

Vla.

Vc.

Cb.

Open string pizz. at random

p

Open string pizz. at random

p

G ♩ = 90

95

Fl. 1

Fl. 2

Ob.

E. H.

Cl.

B. Cl.

Bsn.

Cbsn.

G ♩ = 90

Perc. 1

Perc. 2

Perc. 3

Perc. 4

At random (all natural)

Pno.

Hp.

G ♩ = 90

Vln. I

Vln. II

Vla.

Vc.

Cb.

99

Fl. 1 *mp* *mf*

Fl. 2 *mp* *mf*

Ob. *mp*

E. H. *mp*

Cl. *p* *mp*

B. Cl. *p* *mp*

Bsn. *p*

Cbsn. *p*

Perc. 1 *mp*

Perc. 2 *mp*

Perc. 3 *mp* *mf*

Perc. 4 *mp* *mf*

Natural Harmonics

Pno. *mf*

Hp. *mf*

Vln. I *p* arco sul tasto

Vln. II *p* arco sul tasto

Vla. *p* arco sul tasto

Vc.

Cb.

Detailed description: This page of a musical score covers measures 99 to 103. It features a woodwind section with Flutes 1 and 2, Oboe, English Horn, Clarinet, Bass Clarinet, Bassoon, and Contrabassoon. The percussion section includes four different parts, with some marked for 'Natural Harmonics'. The piano and harp parts provide harmonic support. The string section includes Violins I and II, Viola, Violoncello, and Contrabass. Dynamics range from piano (*p*) to mezzo-forte (*mf*). Performance instructions like 'arco sul tasto' are present for the violins and viola.

105

This page contains the musical score for measures 105 through 108. The score is arranged in a standard orchestral format with the following parts:

- Flutes (Fl. 1, Fl. 2):** Fl. 1 has a melodic line starting at measure 105 with a *mf* dynamic. Fl. 2 has a similar line starting at measure 106 with a *f* dynamic.
- Oboe (Ob.):** Enters at measure 105 with a *mf* dynamic.
- English Horn (E. H.):** Enters at measure 105 with a *mf* dynamic.
- Clarinets (Cl., B. Cl.):** Cl. has a melodic line starting at measure 105 with a *mf* dynamic. B. Cl. enters at measure 106 with a *mf* dynamic.
- Bassoon (Bsn.):** Enters at measure 106 with a *mp* dynamic.
- Contrabassoon (Cbsn.):** Enters at measure 105 with a *mp* dynamic.
- Percussion (Perc. 1-4):** Perc. 1 and 2 play a rhythmic pattern starting at measure 105 with a *mf* dynamic. Perc. 3 and 4 play a similar pattern. Perc. 3 has a *f* dynamic at measure 108. Perc. 4 has a *f* dynamic at measure 107. A box labeled "Natural Harmonics" is present in Perc. 2 at measure 107.
- Piano (Pno.):** Enters at measure 105 with a *f* dynamic.
- Harpsichord (Hp.):** Enters at measure 105 with a *f* dynamic.
- Violins (Vln. I, Vln. II):** Vln. I has a melodic line starting at measure 106 with a *mp* dynamic and is marked "ord.". Vln. II has a similar line starting at measure 107 with a *mp* dynamic and is marked "ord.".
- Viola (Vla.):** Enters at measure 106 with a *mp* dynamic.
- Violoncello (Vc.):** Enters at measure 105 with a *p* dynamic, marked "arco sul tasto".
- Double Bass (Cb.):** Enters at measure 105 with a *p* dynamic, marked "non-divisi arco, sul pont.".

H

109

Fl. 1
Fl. 2
Ob.
E. H.
Cl.
B. Cl.
Bsn.
Cbsn.

Hn. 1.3
Hn. 2.4
C Tpt.
Tbn. 1.2
Tba.

H

Natural Harmonics

Perc. 1
Perc. 2
Perc. 3
Perc. 4

Pno.

Hp.

H

Vln. I
Vln. II
Vla.
Vc.
Cb.

Musical score for orchestra and strings, page 25. The score is divided into several systems:

- Woodwinds:** Flute 1 (Fl. 1), Flute 2 (Fl. 2), Oboe (Ob.), English Horn (E. H.), Clarinet (Cl.), Bass Clarinet (B. Cl.), Bassoon (Bsn.), and Contrabassoon (Cbsn.).
- Brass:** Horn 1 & 3 (Hn. 1.3), Horn 2 & 4 (Hn. 2.4), Trumpet (C Tpt.), Trombone 1 & 2 (Tbn. 1.2), and Tuba (Tba.).
- Percussion:** Perc. 1, Perc. 2, Perc. 3, and Perc. 4.
- Piano and Harp:** Piano (Pno.) and Harp (Hp.).
- Strings:** Violin I (Vln. I), Violin II (Vln. II), Viola (Via.), Violoncello (Vc.), and Contrabass (Cb.).

The score includes various dynamic markings such as *mp* (mezzo-piano), *mf* (mezzo-forte), *f* (forte), and *p* (piano). It also features performance directions like *sul pont.* (sul ponticello) for the strings and *a 2* (second endings) for the horns. The piece is marked with *113* at the beginning of the first system.

117

Fl. 1

Fl. 2

Ob.

E. H.

Cl.

B. Cl.

Bsn.

Cbsn.

Hn. 1.3

Hn. 2.4

C Tpt.

Tbn. 1.2

Tba.

Perc. 1

Perc. 2

Perc. 3

Perc. 4

Pno.

Hp.

Vln. I

Vln. II

Vla.

Vc.

Cb.

mp

p

mf

fp

f

molto sul pont.

mf

p

f

121

Fl. 1

Fl. 2

Ob.

E. H.

Cl.

B. Cl.

Bsn.

Cbsn.

Hn. 1.3

Hn. 2.4

C Tpt.

Tbn. 1.2

Tba.

Perc. 1

Perc. 2

Perc. 3

Perc. 4

Pno.

Hp.

Vln. I

Vln. II

Vla.

Vc.

Cb.

p

mp

f

mf

p

molto sul pont.

sul pont.

Detailed description: This page of a musical score, numbered 121, contains 27 staves. The woodwind section includes Flutes 1 and 2, Oboe, English Horn, Clarinet, Bass Clarinet, Bassoon, and Contrabassoon. The brass section includes Horns 1.3 and 2.4, Trumpets, Trombones, and Tuba. Percussion includes four parts. Piano and Harp are also present. The string section includes Violins I and II, Viola, Violoncello, and Contrabass. The score features various dynamics such as *p*, *mp*, *f*, and *mf*, and performance instructions like *molto sul pont.* and *sul pont.* The music is written in a common time signature with a key signature of one flat.

126

Cl.

Bsn.

Cbsn.

Hn. 1.3

Hn. 2.4

C Tpt.

Tbn. 1.2

Tba.

Perc. 1

Perc. 2

Perc. 3

Perc. 4

Pno.

Hp.

Vln. I

Vln. II

Vla.

Vc.

Cb.

mf

f

mp

p

mf

f

mf

f

mp

mp

mp

mp

p

mp

f

mf

mf

mf

f

ord.

mf

sul pont.

mf

sul pont.

mf

p

f

p

131

Brass Section:
Hn. 1.3: *mp*
Hn. 2.4: *mp*
C Tpt.: *p*
Tbn. 1.2: *mf*
Tba.: *mf*

Woodwinds:
Vln. I: *mf*
Vln. II: *mp*
Vla.: *mp*
Vc.: *mf*
Cb.: *mf*

Percussion:
Perc. 1: *p*
Perc. 2: *p*
Perc. 3: *p*
Perc. 4: *p*

Piano:
Pno.: *mf*

Harp:
Hp.: *mf*

Measure 131: Horns 1.3 and 2.4 play a half note G4. Horn 2.4 has a *mp* dynamic. Horn 1.3 has a *mp* dynamic. Horn 2.4 has a *mp* dynamic. Horn 1.3 has a *mp* dynamic. Horn 2.4 has a *mp* dynamic. Horn 1.3 has a *mp* dynamic. Horn 2.4 has a *mp* dynamic. Horn 1.3 has a *mp* dynamic. Horn 2.4 has a *mp* dynamic.

Measure 132: Horns 1.3 and 2.4 play a half note G4. Horn 2.4 has a *mp* dynamic. Horn 1.3 has a *mp* dynamic. Horn 2.4 has a *mp* dynamic. Horn 1.3 has a *mp* dynamic. Horn 2.4 has a *mp* dynamic. Horn 1.3 has a *mp* dynamic. Horn 2.4 has a *mp* dynamic. Horn 1.3 has a *mp* dynamic. Horn 2.4 has a *mp* dynamic.

Measure 133: Horns 1.3 and 2.4 play a half note G4. Horn 2.4 has a *mp* dynamic. Horn 1.3 has a *mp* dynamic. Horn 2.4 has a *mp* dynamic. Horn 1.3 has a *mp* dynamic. Horn 2.4 has a *mp* dynamic. Horn 1.3 has a *mp* dynamic. Horn 2.4 has a *mp* dynamic. Horn 1.3 has a *mp* dynamic. Horn 2.4 has a *mp* dynamic.

Measure 134: Horns 1.3 and 2.4 play a half note G4. Horn 2.4 has a *mp* dynamic. Horn 1.3 has a *mp* dynamic. Horn 2.4 has a *mp* dynamic. Horn 1.3 has a *mp* dynamic. Horn 2.4 has a *mp* dynamic. Horn 1.3 has a *mp* dynamic. Horn 2.4 has a *mp* dynamic. Horn 1.3 has a *mp* dynamic. Horn 2.4 has a *mp* dynamic.

135

Hn. 1.3 *p*

Hn. 2.4 *p*

C Tpt. *p*

Tbn. 1.2 *mp*

Tba. *mp*

Perc. 1

Perc. 2

Perc. 3

Perc. 4

Pno.

Hp. *mp*

Vln. I *p* *f* *sul pont.*

Vln. II *p* *f* *sul pont.*

Vla.

Vc. ord. *mp*

Cb. *mp*

Detailed description: This page of a musical score covers measures 135, 136, and 137. The score is arranged in a standard orchestral format. The woodwind section includes Horns 1.3 and 2.4, C Trumpet, and Trombones 1.2 and Tuba, all playing sustained notes with dynamics ranging from *p* to *mp*. The percussion section consists of four parts, with various rhythmic patterns and accents. The piano part features a steady eighth-note accompaniment with triplets in both hands. The harp part provides a sustained accompaniment, marked *mp*. The string section includes Violin I and II, Viola, Violoncello (ord.), and Contrabass. Violin I and II have dynamic markings of *p* and *f*, with a *sul pont.* instruction for the first violin. The cello and contrabass parts are marked *mp*.

138

Hn. 1.3 *p*

Hn. 2.4

C Tpt.

Tbn. 1.2 *p*

Tba. *mp*

Perc. 1

Perc. 2

Perc. 3

Perc. 4

Pno.

Hp. *p*

Vln. I *p* *sul tasto, non-vib.*

Vln. II

Vla. *p* *f* *sul pont.*

Vc. *p* *f* *sul pont.*

Cb.

142

Hn. 1.3

Hn. 2.4

C Tpt.

Tbn. 1.2

Tba.

Perc. 1

Perc. 2

Perc. 3

Perc. 4

Pno.

Hp.

Vln. I

Vln. II

Vla.

Vc.

Cb.

p

p

p

pizz.

p

p

f

molto sul pont.

sul tasto, non-vib.

145 Play 4x

Perc. 1: *3*

Perc. 2: *3*

Perc. 3: *5*

Perc. 4: *ord.* *6*

Pno. *p*

Hp.

Vln. I

Vln. II

Vla.

Vc.

To Bass Drum

To Timpani

J



149 To Crotales

Perc. 1: *3*

Perc. 2: To Vibraphone

Perc. 3: *3*

Pno.

Hp.

Vla.

Vc.

6/4

III. new river gorge

K
153 **Soft, Restrained** (♩=90)

Hn. 1.3
Hn. 2.4
Tbn. 1.2
Tba.
Timp.
Perc. 3
Pno.

Soft, Restrained (♩=90)

mp
mp
mp
mp
mf
f
mp
mp
mf

Like a broken record

L
160 ♩=72 1. 3. ♩=100 1. 3. ♩=72

Hn. 1.3
Hn. 2.4
Tbn. 1.2
Tba.
Timp.
Perc. 1
Perc. 2
Perc. 3
Pno.

mp
mp
mp
mp
mf
p
mf
mf
mf

bowed
bowed
Ped.

166 (4 + 3) *accel.* .. $\text{♩} = 100$

Hn. 1.3 *mf* 1. 3. 1.

Hn. 2.4 4. 2. 4.

Tbn. 1.2

Tba.

Timp. *mf* *accel.* .. $\text{♩} = 100$

Perc. 1

Perc. 2

Perc. 3 *mf* *mf*

Pno.

172 **M** $\text{♩} = 72$ $\text{♩} = 100$ (3 + 4) $\text{♩} = 72$ $\text{♩} = 100$

Hn. 1.3 3. 1. 3. 1.

Hn. 2.4 2. 4. 2.

Tbn. 1.2

Tba.

Timp. *mf* *mf*

Perc. 1 *mp*

Perc. 2

Perc. 3 *mf*

Pno.

N

179 $\text{♩} = 72$ $(4 + 3)$ *molto rit.* $\text{♩} = 40$

Hn. 1.3 3. 1. a2 *f p*

Hn. 2.4 4. 2. a2 *mf f*

Tbn. 1.2 *f f*

Tba. *f f*

$\text{♩} = 72$ $\text{♩} = 40$ To Guitar

Timp. *mf f*

Perc. 1 To Dulcimer *mf*

Perc. 2 To Mandolin *mf*

Perc. 3 To Banjo *mf f mp*

Pno. *f*

N

$\text{♩} = 72$ *molto rit.* $\text{♩} = 40$

Vln. I *sul tasto*

Vln. II *p arco sul tasto*

Vla. *p arco sul tasto*

Vc. *p arco sul tasto*

IV. mount mitchell

♩ = 60
sul tasto
legato, medium tremolo

187

Vln. I *mp* *p*

Vln. II *legato*
mp *p*

Vla. *legato, slow tremolo*

Vc. *p* *mf* *p*

192

Vln. I *mp* *p* *fast tremolo*

Vln. II *very fast tremolo*
mf *p* *medium tremolo*

Vla. *mp* *p* *mf*

Vc. *mf*

accel. **P** ♩ = 100

197

Vln. I *mf* *mp*

Vln. II *mf* *p*

Vla. *p* *mp*

Vc. *p*

Cb. *arco*
sul tasto
p

202

Vln. I

Vln. II

Vla.

Vc.

Cb.

mp

medium tremolo

206

Vln. I

Vln. II

Vla.

Vc.

Cb.

fast tremolo

slow tremolo

mf *mp*

210

Vln. I

Vln. II

Vla.

Vc.

Cb.

fast tremolo

mf

Q

214

Fl. 1

Fl. 2

Ob.

E. H.

Pno.

Hp.

p

p

p

p

p

mp

Q

Vln. I

Vln. II

Vla.

Vc.

Cb.

p

mf

218

Fl. 1 *mp* *mf*

Fl. 2 *mp*

Ob. *mp*

E. H. *mp*

Cl. *p*

B. Cl. *p*

Bsn. *p*

Perc. 1 *mf*

Perc. 2 *mf*

Perc. 3 *mf*

Pno. *mp*

Hp. *mf*

Vln. I *mf*

Vln. II *mf*

Vla. *mf*

Vc. *medium tremolo* *slow tremolo*

Cb. *f*

Bow open harmonics, droning; unsynchronized with section

222

Fl. 1. *f*

Fl. 2. *mf* *f*

Ob. *mf* *f*

E. H. *mf* *f*

Cl. *mp* *mf*

B. Cl. *mp*

Bsn. *mp*

Cbsn. *p* *mp*

Perc. 1. *f*

Perc. 2.

Perc. 3.

Perc. 4. *mf*

Pno. *mf*

Hp. *f*

Vln. I. *f*

Vln. II. *f*

Vla. *f*

Vc. *f* ord.

Cb. *mf* *f*

Detailed description: This page of a musical score covers measures 222 to 225. It features a large ensemble of instruments. The woodwind section includes Flute 1 (Fl. 1), Flute 2 (Fl. 2), Oboe (Ob.), English Horn (E. H.), Clarinet (Cl.), Bass Clarinet (B. Cl.), Bassoon (Bsn.), and Contrabassoon (Cbsn.). The percussion section consists of four parts (Perc. 1-4). The piano (Pno.) and harp (Hp.) are also present. The string section includes Violin I (Vln. I), Violin II (Vln. II), Viola (Vla.), Violoncello (Vc.), and Contrabass (Cb.). The score shows various dynamics such as *mf* (mezzo-forte), *f* (forte), *mp* (mezzo-piano), and *p* (piano). The woodwinds and strings play sustained notes and chords, while the piano and harp play rhythmic patterns. The percussion parts are marked with *mf* and *f*. The strings play a complex rhythmic pattern with many triplets and accents. The Cb. part has a long note with a *f* dynamic.

227

Fl. 1 *ff*

Fl. 2 *ff*

Ob. *ff*

E. H. *ff*

Cl. *mf*

B. Cl. *mf* *f*

Bsn. *mf* *f*

Cbsn. *mf*

Perc. 1

Perc. 2 *f*

Perc. 3

Perc. 4

Pno. *f*

Hp.

Vln. I

Vln. II *ord.* *3*

Vla. *3*

Vc. *3*

Cb. *mf*

Detailed description: This page of a musical score covers measures 227 to 230. It features a woodwind section with Flute 1 (Fl. 1) and Flute 2 (Fl. 2) playing fortissimo (ff) in the first two measures, while Oboe (Ob.), English Horn (E. H.), Clarinet (Cl.), Bass Clarinet (B. Cl.), Bassoon (Bsn.), and Contrabassoon (Cbsn.) play mezzo-forte (mf) or forte (f). The Percussion section (Perc. 1-4) has a dynamic of forte (f) in the second measure. The Piano (Pno.) and Harp (Hp.) play forte (f). The Violin I (Vln. I) and Violin II (Vln. II) parts feature a melodic line with accents and a 'ord.' (order) marking above a triplet in the second measure. The Viola (Vla.), Violoncello (Vc.), and Contrabass (Cb.) parts also play triplets. The Cb. part has a dynamic of mezzo-forte (mf) in the second measure.

231

Fl. 1
Fl. 2
Ob.
E. H.
Cl.
B. Cl.
Bsn.
Cbsn.
Tbn. 1, 2
Tba.

f
ff
f
ff
f
ff

Detailed description: This section of the score covers measures 231 to 234. It includes staves for Flute 1, Flute 2, Oboe, English Horn, Clarinet, Bass Clarinet, Bassoon, Contrabassoon, Trumpets 1 & 2, and Trombones. The woodwinds and brass play sustained notes, often with dynamic markings of *f* or *ff*. The brass instruments have long, curved lines indicating sustained notes.

Perc. 1
Perc. 2
Perc. 3
Perc. 4
Pno.
Hp.

f

Detailed description: This section covers measures 231 to 234. It includes staves for four different percussion instruments (Perc. 1-4), Piano (Pno.), and Harp (Hp.). The percussion instruments play sustained notes with long, curved lines. The piano and harp play rhythmic patterns of eighth notes.

Vln. I
Vln. II
Vla.
Vc.
Cb.

f
ord.

Detailed description: This section covers measures 231 to 234. It includes staves for Violin I, Violin II, Viola, Violoncello, and Contrabass. The strings play rhythmic patterns of eighth notes, often with triplets. The Viola part has a marking 'ord.'.

235

Fl. 1. *mf*

Fl. 2. *mf*

Ob. *mf*

E. H. *f*

Cl. *mf*

B. Cl. *f*

Bsn. *p*

Cbsn.

Hn. 1.3 *f*

Hn. 2.4 *f*

Tbn. 1.2

Tba.

Perc. 1.

Perc. 2.

Perc. 3.

Perc. 4.

Pno.

Hp.

Vln. I.

Vln. II.

Vla.

Vc.

Cb. *ff* *f*

Detailed description: This page of a musical score covers measures 235 to 238. It features a large ensemble of instruments. The woodwind section includes Flute 1 (starting at *mf*), Flute 2 (starting at *mf*), Oboe (starting at *mf*), English Horn (starting at *f*), Clarinet (starting at *mf*), Bass Clarinet (starting at *f*), Bassoon (starting at *p*), and Contrabassoon. The brass section includes Horns 1.3 and 2.4 (both starting at *f*), Trumpets 1.2, and Trombones. The percussion section consists of four parts (Perc. 1-4). The piano (Pno.) and harp (Hp.) parts feature rhythmic patterns with triplets. The string section includes Violins I and II, Viola, Violoncello (Vc.), and Contrabass (Cb.), with the Cb. part starting at *ff* and moving to *f*. The score is written in a standard musical notation with various dynamics and articulations.

♩ = 144

239

Fl. 1 *mp* *p*

Fl. 2 *mp* *p*

Ob. *mp* *p*

E. H. *mp*

Cl. *mf*

B. Cl. *f* *mf*

Bsn. *f* *mf*

Cbsn. *f* *mf*

Hn. 1,3 (stagger breathe as needed)

Hn. 2,4 (stagger breathe as needed)

C Tpt. *p*

Tbn. 1,2 (stagger breathe as needed)

Tba.

Perc. 1

Perc. 2

Perc. 3

Perc. 4 *f*

Pno.

Hp.

♩ = 144

ord.

Vln. I

Vln. II

Vla.

Vc.

Cb. *ff* *f*

S

244

Fl. 1 *p*

Fl. 2 *p*

Ob. *p*

E. H. *p*

Cl. *mp*

B. Cl. *mp*

Bsn. *mp*

Cbsn. *mp*

Hn. 1.3

Hn. 2.4

C Tpt. *f*

Tbn. 1.2

Tba. *f* *ff* *f*

Perc. 1

Perc. 2

Perc. 3

Perc. 4 *Strummed tremolo*

Pno.

Hp.

Vln. I *Open string arpeggio with glissandi*

Vln. II

Vla. *ff*

Vc. *ff*

Cb.

Strummed tremolo

Finger picking freely

250

Fl. 1
Fl. 2
Ob.
E. H.
Cl.
B. Cl.
Bsn.
Cbsn.
Hn. 1.3
Hn. 2.4
C Tpt.
Tbn. 1.2
Tba.
Perc. 1
Perc. 2
Perc. 3
Perc. 4
Pno.
Hp.
Vln. I
Vln. II
Vla.
Vc.
Cb.

mp
mf
mp
mp
p
ff
f
Strummed tremolo
ff
ff

T

256

Fl. 1 *f* *ff*

Fl. 2 *f* *ff*

Ob. *mf* *f* *ff*

E. H. *mf* *f* *ff*

Cl. *mp* *mf* *f*

B. Cl. *mp* *mf* *f*

Bsn. *mp* *mf*

Cbsn. *mp* *mf*

Hn. 1, 3

Hn. 2, 4

C Tpt. *ff*

Tbn. 1, 2

Tba. *ff* *f*

Perc. 1, 2, 3, 4

Pno.

Harp

Vln. I, II

Vla.

Vc.

Cb.

262

This page contains the musical score for measures 262-267. The instrumentation includes:

- Flutes 1 and 2 (Fl. 1, Fl. 2)
- Oboe (Ob.)
- English Horn (E. H.)
- Clarinet (Cl.)
- Bass Clarinet (B. Cl.)
- Bassoon (Bsn.)
- Contrabassoon (Cbsn.)
- Horn 13 (Hn. 1.3)
- Horn 24 (Hn. 2.4)
- Trumpets 3 (C Tpt.)
- Trombones 12 (Tbn. 1.2)
- Tuba (Tba.)
- Percussion 1-4 (Perc. 1, Perc. 2, Perc. 3, Perc. 4)
- Piano (Pno.)
- Harp (Hp.)
- Violins I and II (Vln. I, Vln. II)
- Viola (Via.)
- Violoncello (Vc.)
- Double Bass (Cb.)

The score features various dynamics such as *ff* (fortissimo) and *f* (forte), and includes numerous triplets and sixteenth-note patterns. The percussion parts are marked with *ff*. The string parts (Vln. I, Vln. II, Via., Vc., Cb.) play a rhythmic triplet pattern throughout the measures.

U

268

This page contains the musical score for measures 268 through 273. The score is arranged in a standard orchestral format with the following parts:

- Flutes (Fl. 1, Fl. 2):** Fl. 1 plays a melodic line with triplets and quintuplets. Fl. 2 plays a similar line with quintuplets and triplets.
- Oboe (Ob.):** Plays a melodic line with triplets and a forte dynamic.
- English Horn (E. H.):** Plays a melodic line with triplets, starting forte and moving to mezzo-forte.
- Clarinets (Cl., B. Cl.):** Cl. plays a melodic line starting forte. B. Cl. plays a rhythmic line starting forte and moving to mezzo-piano.
- Bassoons (Bsn., Cbsn.):** Bsn. plays a rhythmic line starting forte and moving to mezzo-piano. Cbsn. plays a rhythmic line starting mezzo-forte and moving to piano.
- Horns (Hn. 1.3, Hn. 2.4):** Hn. 1.3 plays a rhythmic line with dynamics of mezzo-forte, fortissimo, and mezzo-forte. Hn. 2.4 plays a melodic line with dynamics of mezzo-forte, fortissimo, and mezzo-forte.
- Trumpets (C Tpt.):** Plays a melodic line with triplets, starting fortissimo and moving to fortissimo.
- Trombones (Tbn. 1.2, Tba.):** Tbn. 1.2 plays a melodic line with fortissimo dynamics. Tba. plays a melodic line with fortissimo and fortississimo dynamics.
- Percussion (Perc. 1-4):** Perc. 1 and 2 play rhythmic patterns. Perc. 3 and 4 play complex rhythmic patterns with dynamics of piano and fortissimo.
- Piano (Pno.):** Plays a rhythmic accompaniment.
- Hammond Organ (Hp.):** Plays a rhythmic accompaniment.
- Violins (Vln. I, Vln. II):** Play a melodic line with triplets, starting fortissimo.
- Viola (Via.):** Plays a melodic line with triplets, starting fortissimo.
- Violoncello (Vc.):** Plays a melodic line with triplets, starting fortissimo.
- Double Bass (Cb.):** Plays a melodic line with triplets, starting fortissimo.

274

Fl. 1
Fl. 2
Ob.
E. H.
Cl.
B. Cl.
Bsn.
Cbsn.
Hn. 1.3
Hn. 2.4
C Tpt.
Tbn. 1.2
Tba.
Perc. 1.
Perc. 2.
Perc. 3.
Perc. 4.
Pno.
Hp.
Vln. I
Vln. II
Vla.
Vc.
Cb.

f *mf* *mp* *p* *ff* *fff*

280 V

Fl. 1
Fl. 2
Ob.
E. H.
Cl.
B. Cl.
Bsn.
Cbsn.
Hn. 1.3
Hn. 2.4
C Tpt.
Tbn. 1.2
Tba.
Perc. 1.
Perc. 2.
Perc. 3. (bass drum)
Perc. 4.
Pno.
Hp.
Vln. I
Vln. II
Vla.
Vc.
Cb.

mf *ff* *mf* *mf* *ff* *mf*
mf *ff* *mf* *mf* *ff* *mf*
ff *ff* *ff* *ff* *ff* *ff*
ff *fff* *ff*

sul pont.
fff
sul pont.
fff

292

This musical score page contains measures 292 through 297. The instruments and parts are as follows:

- Flutes (Fl. 1, Fl. 2):** Fl. 1 plays a melodic line with triplets and quintuplets. Fl. 2 plays a similar line with triplets. Dynamics include *fff*.
- Woodwinds:** Oboe (Ob.), English Horn (E. H.), Clarinet (Cl.), Bass Clarinet (B. Cl.), Bassoon (Bsn.), and Contrabassoon (Cbsn.) all play rhythmic patterns, primarily eighth notes and sixteenth notes, with various dynamics like *fff* and *mf*.
- Brass:** Horns 1 & 3 (Hn. 1.3) and Horns 2 & 4 (Hn. 2.4) play melodic lines with dynamics ranging from *mf* to *ff*. Trumpets (Tpt.) and Trombones (Tbn. 1, 2) play sustained notes or rhythmic patterns, with *fff* dynamics. Tuba (Tba.) plays a low, sustained note.
- Percussion:** Four percussion parts (Perc. 1-4) play complex rhythmic patterns using various instruments like snare, cymbals, and tom-toms.
- Piano (Pno.):** Plays a rhythmic accompaniment with chords and single notes.
- Harpsichord (Hp.):** Plays a melodic line with a dynamic wedge.
- Strings:** Violins I & II (Vln. I, Vln. II), Viola (Via.), Violoncello (Vc.), and Contrabass (Cb.) all play a consistent rhythmic pattern of eighth notes with triplets.

298

Fl. 1
Fl. 2
Ob.
E. H.
Cl.
B. Cl.
Bsn.
Cbsn.
Hn. 1.3
Hn. 2.4
C Tpt.
Tbn. 1.2
Tba.
Perc. 1.
Perc. 2.
Perc. 3.
Perc. 4.
Pno.
Hp.

Detailed description: This section of the score covers measures 298 to 303. It includes parts for woodwinds (Flutes 1 & 2, Oboe, English Horn, Clarinet, Bass Clarinet, Bassoon, Contrabassoon), brass (Horn 1.3, Horn 2.4, Trumpet, Trombone 1.2, Tuba), and percussion (Percussion 1-4, Piano, and Harp). The woodwinds and brass parts feature complex rhythmic patterns with triplets and sixteenth notes. The percussion parts consist of various rhythmic patterns. The piano and harp parts provide harmonic support. Dynamics range from *mf* to *ffff*. The tempo is marked *molto rit.*

molto sul pont.

Vln. I
Vln. II
Via.
Vc.
Cb.

As high as you can reach

Detailed description: This section of the score covers measures 304 to 309. It includes parts for strings (Violin I, Violin II, Viola, Violoncello, and Contrabass). The string parts feature a rhythmic pattern of eighth notes with triplets. The dynamics are marked *ffff*. The tempo is marked *molto sul pont.*. The instruction "As high as you can reach" is written above the Violin I part.