

UCLA

Contemporary Music Score Collection

Title

Four preludes and a coda

Permalink

<https://escholarship.org/uc/item/0x86868x>

Author

Chlebek, Katarzyna

Publication Date

2024-09-03

TERMS AND SYMBOLS



hit the keys of the saxophone while blowing soundlessly

son-eol

aeolian sounds (sounds with air)



molto vibrato, con la bocca, quasi tremolo (vibrato achieved with the mouth. resembling a tremolo sound)

lascia vibrare

allow the sound to continue/vibrate until the next phrase

singing lower note

voxax (singing lower notes while playing upper ones)

slap

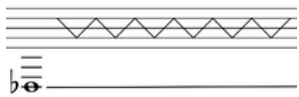
slap tongue

detache-slap

after the initial slap attack, sounds played détaché



highest note possible



overblowing, glissando on overtones of the harmonic series of a given sound

growl

hoarse sound, simultaneous playing and throat wheezing

Cztery preludia i koda

Katarzyna Chlebek

I. Lento, misterioso

1) hit the keys of the saxophone while blowing soundlessly

Sassofono alto

Piano

8

ppp

red.

9

Sass. a.

son-eol

pp

p

P-no

8

red.

15

Sass. a.

son-eol

pp

pp

P-no

8

red.

son-eol
molto vibrato
con la bocca,
quasi tremolo

21

Sass. a.

8

P-no

Red.

p

26

Sass. a.

8

P-no

(Red.)

II. Ampliamente e profondamente

27 $\text{♩} = 100$

Sass. a. *mf*

P-no *mf*

33 *mf*

Sass. a. *mf*

P-no *mf*

38 *f*

Sass. a. *f*

P-no *f*

43 *slow vibrato*

Sass. a. *slow vibrato*

P-no *slow vibrato*

vibrato gradual from slow to fast -----

48

Sass. a. *ff* *sfp* *f*

P-no *ff* *mp* *mp* *sf* *mp*

53

Sass. a. *pp*

P-no *f* *pp* *pp*

rit. ----- $\text{♩} = 200$

58

Sass. a. *p* *mf* *f* vibrato vibrato

P-no *p* *mf* *f* *ff* *mf* *f*

♩ = 100

64

Sass. a.

P-no

ff *pp* *ppp*

Lascia vibrare

2) singing lower note

69

Sass. a.

P-no

p *mf* *sf* *p*

71

Sass. a.

P-no

mf *fff*

p *fff*

III. Capriccioso

74 $\text{♩} = 120$

Sass. a. *slap* *detache-slap* *slap* *simile* 3

P-no *pp* *f* *mp*

77 3 *tr* *tr*

Sass. a. *mf* *ff*

P-no *mp* *p* *fff*

3) overblowing,
glissando on overtones of the
harmonic series of a given sound

80

Sass. a.

P-no *mp* *mf* *sf* *p*

p *sff* *p* *mf* *p*

83 3)

Sass. a.

P-no *pp* *fff* *mf*

p *ff* *pp* *sff* *p*

86 3)

Sass. a.

P-no

pp *fff* *mp* *ff* *p* *sff* *mf* *f*

89

Sass. a.

P-no

slap detache-slap slap

mf *ff* *pp* *fff* *sff* *pp*

92 simile

Sass. a.

P-no

mf *ff* *pp* *sff* *ff* *p* *pp* *sff* *ff*

95

Sass. a.

P-no

ff *ff*

98

Sass. a.

P-no

ff

101

Sass. a.

P-no

mp *sf* **allarg.**

ff *ff*

mp *sf* **allarg.** *ff* *ff*

104 **a tempo**

Sass. a.

P-no

pp *ff*

pp *ff*

pp *ff*

pp *ff*

106

Sass. a.

P-no

pp *mf*

pp

pp *mf*

pp

108

Sass. a.

sfp *mf*

P-no

f *p*

ppp *p*

Detailed description: This system covers measures 108 and 109. The saxophone part (Sass. a.) begins in measure 108 with a dynamic of *sfp* and moves to *mf* in measure 109. The piano part (P-no) has a right-hand part starting at *f* in measure 108 and *p* in measure 109, and a left-hand part starting at *ppp* in measure 108 and *p* in measure 109.

110

Sass. a.

pp

P-no

fff *mp*

fff *mp*

Detailed description: This system covers measures 110 and 111. The saxophone part (Sass. a.) has a dynamic of *pp* throughout. The piano part (P-no) has a right-hand part starting at *fff* in measure 110 and *mp* in measure 111, and a left-hand part starting at *fff* in measure 110 and *mp* in measure 111.

112

Sass. a.

p *ff*

P-no

mp *ff* *pp*

f *ff* *pp*

Detailed description: This system covers measures 112 and 113. The saxophone part (Sass. a.) has a dynamic of *p* in measure 112 and *ff* in measure 113. The piano part (P-no) has a right-hand part with dynamics *mp*, *ff*, and *pp* across measures 112 and 113, and a left-hand part with dynamics *f*, *ff*, and *pp* across measures 112 and 113.

114

Sass. a.

pp *sff* *pp*

P-no

sff *sff* *pp*

sff *sff* *pp*

Detailed description: This system covers measures 114 and 115. The saxophone part (Sass. a.) has dynamics *pp*, *sff*, and *pp* across measures 114 and 115. The piano part (P-no) has a right-hand part with dynamics *sff*, *sff*, and *pp* across measures 114 and 115, and a left-hand part with dynamics *sff*, *sff*, and *pp* across measures 114 and 115.

116 *ff*

Sass. a.

ff

P-no

ff

The image shows a musical score for measures 116, 117, and 118. The score is for Saxophone (Sass. a.) and Piano (P-no). Both instruments are marked with a fortissimo (*ff*) dynamic. The key signature has one flat (B-flat). Measure 116 starts with a treble clef and a key signature change to B-flat. The saxophone part features a melodic line with slurs and accents, while the piano accompaniment consists of a steady eighth-note pattern in the bass clef. Measure 117 continues the piano accompaniment with a melodic line in the treble clef. Measure 118 concludes the passage with a final chord in the piano part and a whole rest in the saxophone part. The score ends with a double bar line.

118 **IV. ad libitum** growl *tr* **Andante misterioso**

Sass. a. *n* < *mf* > *pp* < *f* > *p* < *ff* >

P-no *mp*

127 growl

Sass. a. *f* *mp* 3

P-no *ppp* *ppp*

132 3 3 growl

Sass. a. 8 15

P-no *fff* *pp*

136 growl 3

Sass. a. *f* *f* *mp*

P-no *mp* *p* *mp*

141

Sass. a. *pp* *growl* *f*

P-no *ppp* *f* *p*

146

Sass. a. *tr* *growl* *f* *mp*

P-no *mf* *f* *ff*

151

Sass. a. *p* *growl* *tr* *f*

P-no *mf* *ppp*

154 V. Adagio, corale

Sass. a.

legatissimo

mp *mf* *pp* *mp*

P-no

mp *mf* *pp*

Detailed description: This system covers measures 154 to 159. The Saxophone part (Sass. a.) is mostly silent, with a few notes in measures 155 and 159. The Piano part (P-no) features a complex texture of chords and arpeggios. Dynamics range from mezzo-piano (mp) to pianissimo (pp). The instruction 'legatissimo' is written above the piano part.

Sass. a.

mp *f*

P-no

mf *mf* *ppp* *f*

Detailed description: This system covers measures 160 to 165. The Saxophone part (Sass. a.) has a few notes in measures 160 and 162. The Piano part (P-no) continues with dense chordal textures. Dynamics include mezzo-forte (mf), pianissimo (ppp), and forte (f).

166 **allarg.**

Sass. a.

mp *mp*

P-no

mp *mp*

Detailed description: This system covers measures 166 to 170. The tempo is marked 'allarg.' (ritardando). The Saxophone part (Sass. a.) has a few notes in measures 166 and 169. The Piano part (P-no) features a more open texture with fewer notes. Dynamics are mezzo-piano (mp).