

UC Davis

UC Davis Previously Published Works

Title

Acceleration-Based Estimation of Vertical Ground Reaction Forces during Running: A Comparison of Methods across Running Speeds, Surfaces, and Foot Strike Patterns.

Permalink

<https://escholarship.org/uc/item/0xm44995>

Journal

Diversity, 23(21)

Authors

Kiernan, Dovin

Ng, Brandon

Hawkins, David

Publication Date

2023-10-25

DOI

10.3390/s23218719


Copyright Information

This work is made available under the terms of a Creative Commons Attribution License, available at <https://creativecommons.org/licenses/by/4.0/>

Peer reviewed

Article

Acceleration-Based Estimation of Vertical Ground Reaction Forces during Running: A Comparison of Methods across Running Speeds, Surfaces, and Foot Strike Patterns

Dovin Kiernan ^{1,*} , Brandon Ng ² and David A. Hawkins ^{1,3} ¹ Biomedical Engineering Graduate Group, University of California, Davis, Davis, CA 95616, USA² Department of Biomedical Engineering, University of California, Davis, Davis, CA 95616, USA³ Department of Neurobiology, Physiology, & Behavior, University of California, Davis, Davis, CA 95616, USA

* Correspondence: dkiernan@ucdavis.edu; Tel.: +1-240-938-9467

Abstract: Twenty-seven methods of estimating vertical ground reaction force first peak, loading rate, second peak, average, and/or time series from a single wearable accelerometer worn on the shank or approximate center of mass during running were compared. Force estimation errors were quantified for 74 participants across different running surfaces, speeds, and foot strike angles and biases, repeatability coefficients, and limits of agreement were modeled with linear mixed effects to quantify the accuracy, reliability, and precision. Several methods accurately and reliably estimated the first peak and loading rate, however, none could do so precisely (the limits of agreement exceeded $\pm 65\%$ of target values). Thus, we do not recommend first peak or loading rate estimation from accelerometers with the methods currently available. In contrast, the second peak, average, and time series could all be estimated accurately, reliably, and precisely with several different methods. Of these, we recommend the ‘Pogson’ methods due to their accuracy, reliability, and precision as well as their stability across surfaces, speeds, and foot strike angles.

Keywords: wearables inertial measurement units (IMUs); in-field kinetics; over-ground gait biomechanics; machine learning



Citation: Kiernan, D.; Ng, B.; Hawkins, D.A. Acceleration-Based Estimation of Vertical Ground Reaction Forces during Running: A Comparison of Methods across Running Speeds, Surfaces, and Foot Strike Patterns. *Sensors* **2023**, *23*, 8719. <https://doi.org/10.3390/s23218719>

Academic Editors: Emre Sariyildiz and Winson Lee

Received: 7 September 2023

Revised: 18 October 2023

Accepted: 23 October 2023

Published: 25 October 2023



Copyright: © 2023 by the authors. Licensee MDPI, Basel, Switzerland. This article is an open access article distributed under the terms and conditions of the Creative Commons Attribution (CC BY) license (<https://creativecommons.org/licenses/by/4.0/>).

1. Introduction

Ground reaction forces (GRFs) are external reaction forces created with equal magnitude and opposite sense to the force that the foot applies to the ground with each step. Quantifying GRFs is fundamental to running biomechanics research because: (1) per Newton’s second law, GRFs dictate center of mass (COM) acceleration and can therefore be used to study whole-body motion; (2) this whole-body motion both causes, and is caused by, muscle activity and thus GRF provides insight into that activity [1]; (3) in combination with this muscle activity, GRF contributes to the internal loads experienced by structures within the body (e.g., bone, ligament, tendon, cartilage), leading to its frequent (though much contested) investigation as a risk-factor for injury [2–10]; (4) the magnitude and sense of GRF is used to assess running performance [11–14]; finally, (5) because GRFs are critical to inverse dynamics calculations, allowing for the estimation of joint forces and moments and more advanced analysis of behavior. Thus, accurate quantification of GRF during running is an important goal.

Accurate quantification of GRF is relatively easy with a force plate or instrumented treadmill, however, this equipment is generally ‘captive’ to lab environments that may not represent the actual conditions that runners experience. To increase ecological validity, previous research has attempted to replicate field conditions within the lab [15–19]. Even with such attempts, however, spatial constraints may cause participants to alter their gait on a treadmill or short running track [20], and temporal constraints still limit the duration and volume of data collection. Thus, lab measured GRFs may not accurately represent

the millions of GRFs that occur over many long bouts of running in the field, limiting our understanding of GRF and its relation to other variables.

Some of these constraints have been overcome through the advancement of force sensing insoles [21–26], wearable load cells [27–29], and instrumented shoes [30–32]. However, this equipment still suffers from issues with durability, comfort, changing the mechanical properties of a shoe (i.e., making it more rigid) and interfering with the foot–ground (or foot–shoe) interface. Consequently, biomechanists remain largely reliant on ‘captive’ technology to measure GRF, decreasing the ecological validity and volume of available data.

Accelerometers offer a promising alternative to overcome this reliance on ‘captive’ technology. These small, low-cost wearable devices may allow the capture of greater volumes of more ecologically valid data than traditional ‘captive’ equipment. Sets of multiple wearables can estimate GRFs during walking [33–36] and running [37–39] and several methods have been proposed that truly capitalize on the advantages of accelerometers (minimizing system complexity, preparation time, participant discomfort, and costs) by estimating GRFs with a single accelerometer. These single-accelerator methods often place the accelerometer on the shank or locations intended to approximate whole body COM such as the hip, lower back, or upper back (other locations such as the wrist have also been investigated but show poor correlations with GRFs [40,41]).

Researchers attempting to estimate GRFs from shank accelerations build on observations that shank acceleration and GRF signals are closely related [42–44] and therefore should allow for the estimation of one from the other [45–47]. Furthermore, some argue that forces applied at the ground are damped as they travel up the body and thus, measuring accelerations at the shank better reflects GRFs than more proximal mounting locations [48]. Researchers also point to similarities in the timing of peaks in the tibial acceleration and GRF signals [49] (cf. [50]) and argue for a mechanical coupling of these peaks [51].

Relations between GRF and accelerometers mounted on the approximate COM have also been explored [40,52]. Use of COM locations is based on Newton’s second law that states that whole body acceleration is inversely proportional to the mass of a body and proportional to the net forces acting on that body [53–56]. Given a constant mass, if forces other than GRF are relatively small (e.g., air resistance), then COM acceleration is a function of gravitational force and GRF. A limitation of this ‘COM’ approach is the assumption that a single accelerometer with a static position can capture whole body COM acceleration even though the COM location can move during running (due to limb movements and changes in posture). Despite this movement, previous research supports this assumption and demonstrates that a sacrum-mounted accelerometer captures whole body COM acceleration during running fairly well [57–61].

Based on these arguments, there have been many attempts to estimate GRF from acceleration at these two mounting locations [62]. However, only one study has conducted a head-to-head comparison of methods and that study only compared two of the many methods available [63]. Thus, there are no comprehensive recommendations to guide users on which method to use for a given application. To overcome this gap in the literature, methods to estimate GRF from a single accelerometer were replicated and compared. Methods were required to be non-participant or -trial specific (cf. [64]), non-proprietary (cf. [50,65,66]), report promising results (cf. [67]), and be capable of providing stance-by-stance estimates of at least one feature of the vertical GRF (first peak, loading rate, second peak, average, or time series) (cf. [56]) using only easy-to-measure anthropometrics and/or features of an acceleration input signal (cf. [16,56,68,69]) from a single sensor on the shank or COM (cf. [37–39,70–72]). In total, 27 methods derived from 13 publications met these criteria. The 13 original publications are described in Table 1 while the methods derived from those publications and the vertical GRF feature they are capable of estimating are described in Table 2.

Table 1. Thirteen publications met our inclusion criteria and presented one or more methods to estimate at least one feature of the vertical GRF (first peak, loading rate, second peak, average, or time series) from a single accelerometer on the shank or approximate COM (hip, sacrum, lower back, or upper back).

| Publication | Sample | Foot-Strike | Speed | Surface | Placement | Signals | Range and Frequency | Targets | Ground Truth | Sync |
|-------------------------------|--|-------------|--------------------------------------|-----------------------------------|--|--|--|--|--------------------------------|---|
| Neugebauer 2012, 2014 [73,74] | n = 35 (20 F 15 M) children [73] n = 39 (20 F 19 M) injury free adults [74] | NR | 2.2–3.9 m/s [73] 2.2–4.1 m/s [74] | 90 [73] and 15 m [74] over-ground | Right iliac crest | α_{WCSres} [73] $\alpha_{WCSx,y}$ [74] | NR 40 Hz [73] ± 6 g 100 Hz [74] | $F_{y,max}$ | Force plate 1000 Hz | Average 30 [73] or 10 s [74] |
| Charry 2013 [75] | n = 3 | NR | 1.7–7.2 m/s | Overground | Medial mid-tibia | α_{WCSy} | ± 24 g 100 Hz | $F_{y,second}$ | Force plate 300 Hz | Video |
| Wundersitz 2013 [54] | n = 17 (5 F 12 M) uninjured team sport | NR | 2.5–7.4 m/s | 10 m over-ground | 2nd Thoracic vertebra | $\alpha_{WCSy,res}$ | ± 8 g 100 Hz | $F_{y,max}$ | Force plate 100 Hz | Video |
| Meyer 2015 [76] | n = 13 (3 F 10 M) moderately active children | NR | 1.7–2.8 m/s | 10 m over-ground | Hip | α_{WCSy} | ± 8 g 100 Hz | $F_{y,max}$ | Force plate 2400 Hz | Average 8–15 steps |
| Gurchiek 2017 [55] | n = 15 (3 F 12 M) | NR | Sprinting and cutting | Overground | Sacrum | $\alpha_{GCSx,y,z}$ | ± 24 g 450 Hz | $F_{y,t}$ $F_{y,average}$ | Force plate 1000 Hz | Counter-movement jumps |
| Thiel 2018 [48] | n = 3 elite sprinters | NR | Sprint | Overground | Above medial malleolus | $\alpha_{WCSx,y,z}$ | ± 16 g 250 Hz | $F_{y,max}$ | Force plates 1000 Hz | LED flash |
| Kiernan 2020 [77] | n = 40 (NR) | NR | NR | 25 m Overground | Sacrum; iliac crest | α_{SCSy} | ± 100 g 1000 Hz | $F_{y,first}$ $F_{y,second}$ | Force plate 1000 Hz | TTL pulses |
| Kim 2020 [78] | n = 7 (0 F 7 M) | NR | 2.9 m/s | Treadmill | Sacrum | $\alpha_{WCSx,y,z}$ | 200 Hz | $F_{y,t}$ | Force plate 400 Hz | NR |
| Pogson 2020 [79] | n = 15 (5 F 10 M) team sport players | NR | 2.0–8.0 m/s | Overground | Back of upper torso | $\alpha_{WCSx,y,z}$ | ± 16 g 100 Hz | $F_{y,t}$ | Force plate 3000 Hz | Synchronous recording |
| Day 2021 [80] | n = 30 (21 F 9 M) NCAA Div 1 cross country | NR | 3.8–5.4 m/s | Treadmill | Posterior waistband | $\alpha_{WCSx,y,z}$ | 500 Hz | $F_{y,t}$ $F_{y,max}$ | Instrumented treadmill 500 Hz | Average 10 s (jump) |
| Higgins 2021 [40] | n = 30 (15 F 15 M) healthy | NR | ~1.8–5.0 m/s | 23 m over-ground | Superior to lateral malleolus; hip | $\alpha_{WCSy,res}$ | ± 8 g 100 Hz | $F_{y,first}$ $\frac{dy}{dx} F_{y,first}$ | Force plate 1000 Hz | Vertical jumps |
| Veras 2022 [63] | n = 131 (52 F 79 M) adults | NR | 1.9–3.9 m/s | Treadmill | Superior to lateral malleolus; iliac crest; sacrum | $\alpha_{WCSy&res}$ | ± 16 g 100 Hz | $\frac{dy}{dx} F_{y,first}$ $F_{y,max}$ | Instrumented treadmill 1000 Hz | Manual correction and cross-correlation |

M—male; F—female; NR—not reported; α —acceleration; SCS—segment coordinate system; WCS—wearable coordinate system; GCS—global coordinate system (coordinate conventions defined below); $F_{y,first}$ —first (or ‘impact’) peak; $\frac{dy}{dx} F_{y,first}$ —loading rate to first peak; $F_{y,second}$ —second (or ‘active’) peak; $F_{y,max}$ —maximum, assumed to correspond to the second (or ‘active’) peak; $F_{y,t}$ —time series.

Table 2. Twenty-seven methods were derived or adapted from the 13 publications in Table 1. Methods are sorted by accelerometer placement location. Methods that originally placed accelerometers on the lumbar or thoracic spine have been adapted to the sacrum. Not all methods could estimate all potential vertical GRF features. If a method was originally designed to estimate a feature, it is specified as ‘designed’ and highlighted in blue. If a method was designed to estimate a time series, all discrete vertical GRF features were then derived from that time series. These are marked ‘derived’ and highlighted pink.

| | | Estimated Force Variable | | | | |
|-----------------|-----------------|--------------------------|--------------|-------------|---------|-------------|
| Sensor Location | Method | First Peak | Loading Rate | Second Peak | Average | Time Series |
| Shank | Charry | | | designed | | |
| | Thiel | | | designed | | |
| | Veras shank res | | designed | designed | | |
| | Veras shank y | | designed | designed | | |
| | Higgins shank | designed | designed | | | |
| Hip | Neugebauer | | | designed | | |
| | Meyer | | | designed | | |
| | Kiernan hip | designed | | designed | | |
| | Veras hip res | | designed | designed | | |
| | Veras hip y | | designed | designed | | |
| | Higgins hip | designed | designed | | | |

Table 2. Cont.

| Sensor Location | Method | Estimated Force Variable | | | | |
|-----------------|------------------|--------------------------|--------------|-------------|----------|-------------|
| | | First Peak | Loading Rate | Second Peak | Average | Time Series |
| Sacrum | Gurchiek | derived | derived | derived | designed | designed |
| | Kim acceleration | derived | derived | derived | derived | designed |
| | Kim displacement | derived | derived | derived | derived | designed |
| | Kiernan sacrum | designed | | designed | | |
| | Veras sacrum res | | designed | designed | | |
| | Veras sacrum y | | designed | designed | | |
| | Day 5 Hz | derived | derived | designed | derived | designed |
| | Day 10 Hz | derived | derived | designed | derived | designed |
| | Day 30 Hz | derived | derived | designed | derived | designed |
| | Wundersitz 10 Hz | | | designed | | |
| | Wundersitz 15 Hz | | | designed | | |
| | Wundersitz 20 Hz | | | designed | | |
| | Wundersitz 25 Hz | | | designed | | |
| | Wundersitz raw | | | designed | | |
| | Pogson | derived | derived | derived | derived | designed |
| | Pogson xynormed | derived | derived | derived | derived | designed |

To evaluate which of these 27 methods provides the most accurate, reliable, and precise estimate of the vertical GRF first peak, loading rate, second peak, average, and/or time series, errors were calculated relative to a gold-standard force plate. For each method, errors were compared across a range of speeds, foot strike angles, and running surfaces to explore whether the method's performance varied across these conditions. The results demonstrate the best method to estimate vertical GRF parameters from a single accelerometer under given surface, foot strike, and running speed conditions. Code to automatically execute each of the methods on stance-segmented accelerometer data is provided at https://github.com/DovinKiernan/MTFBWY_running_vGRF_from_a, accessed on 12 September 2023.

2. Methods

Data from this study were first reported in a separate analysis [15], but methods are repeated here for convenience.

2.1. IMU Calibration

Adapting methods from Coolbaugh et al. [81], tri-axial IMUs (ProMove MINI, Inertia Technology, Enschede, The Netherlands; ± 16 g primary, ± 100 g secondary, ± 34.91 rad/s, 1000 Hz; see <https://inertia-technology.com/wp-content/uploads/2022/02/ProMove-mini-datasheet.pdf>, (accessed on 11 Oct 2023) for further details on device specifications and operation) were calibrated with a centrifuge (ClearPath MCVC, Teknic, Victor, NY, USA) and custom 3D printed jigs (SOLIDWORKS 2019, Dassault Systèmes, Vélizy-Villacoublay, France). After calibration, IMU primary accelerometer errors were $\leq 0.01 \pm 0.04$ g, secondary accelerometer errors were $\leq 0.05 \pm 0.07$ g, and gyroscope errors were $\leq 0.01 \pm 0.01$ rad/s (Supplement SA.1).

2.2. Participants

Seventy-seven participants were recruited from the University of California, Davis, local running clubs, and the community at large. Participants were ≥ 18 years old and reported running ≥ 16.09 km per week for ≥ 6 months. Three participants were excluded from the analysis due to movement of an IMU ($n = 2$) or inability to complete the protocol as instructed ($n = 1$), leaving a final sample of 74 (32 males; 42 females; 0 non-binary; age 28 ± 12 years; Figure 1). All participants provided written informed consent, and procedures were approved by the University of California, Davis Institutional Review Board.

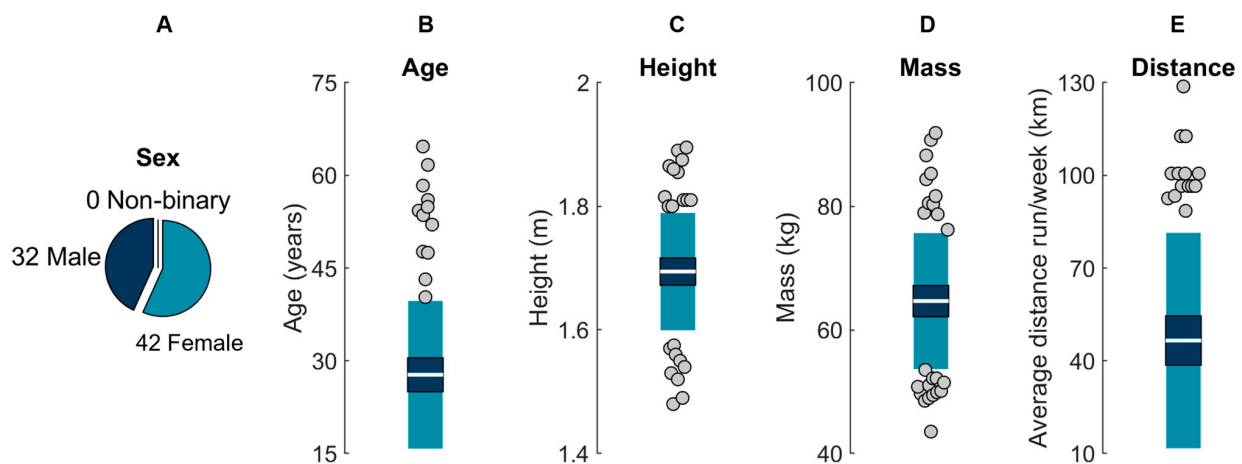


Figure 1. Participant (A) sex, (B) age, (C) height, (D) mass, and (E) self-reported average distance run per week. The white horizontal line represents the mean; dark blue represents $\pm 95\%$ confidence interval (± 1.96 SEM) around the mean; and light blue represents ± 1 SD around the mean. Gray dots represent participants outside ± 1 SD.

2.3. Protocol

Participant mass, height, and distance of the left and right lateral malleolus, fibular head, lateral epicondyle, and superior aspect of greater trochanter from the ground were measured. Using adhesive-bonded hook-and-loop fasteners, IMUs were attached to neoprene belts with anti-slip silicone inners, then wrapped with elastic straps as tightly as possible, within the limit of participant comfort. IMUs were placed anterior and superior to the lateral malleoli (*shank*), on the superior aspect of the iliac crests in line with the greater trochanter (*hip*), and on the superior aspect of the sacrum in line with the spine (*sacrum*) (Figure 2).

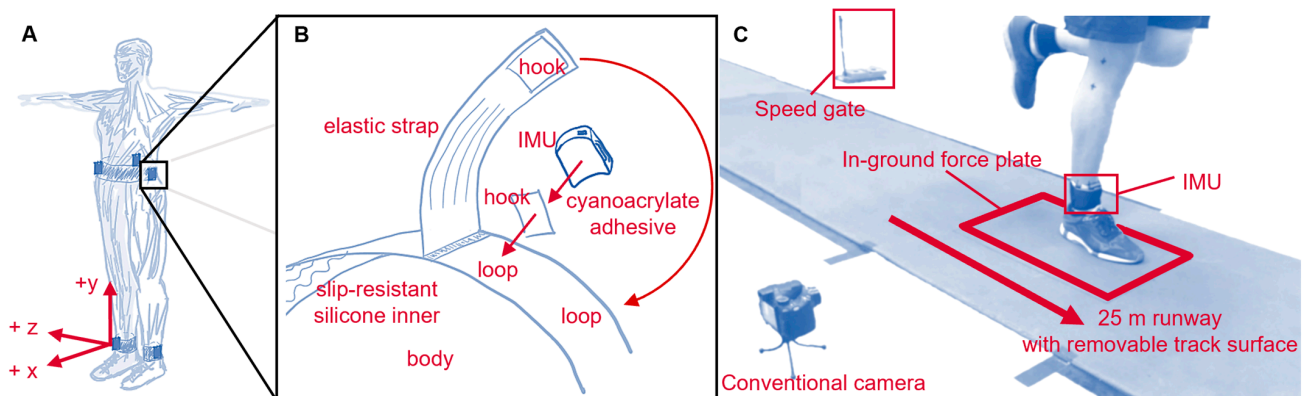


Figure 2. (A) IMU placement and coordinate conventions. For consistency, different conventions used across methods have been standardized to ISB conventions [82]: Segment coordinate systems (SCS) were defined as anterior (+x), proximal (+y), and medial-lateral (with right defined as +z); wearable coordinate systems (WCS) were defined square to the IMU housing, which was roughly aligned with the direction of progression (+x), longitudinal axis (+y proximal), and right (+z); tilt-corrected coordinate systems (TCCS) were defined as vertical (+y) and the projections of direction of progression (+x) and the medial-lateral axis (+z right) onto the horizontal plane. (B) Belt design and IMU fixation. (C) Experimental setup.

Participants wore their own shoes and ran a 25 m runway with an embedded force plate (Kistler 9281, Kistler Group, Winterthur, Switzerland; 1000 Hz). The running speed was recorded using two custom-built laser speed gates, placed 2.5 m on each side of force

plate center. Participants warmed up and practiced striking the force plate three times per side at their *slowest* (“the slowest pace you would use on a run”), *typical* (“the pace you use for the majority of your running”), and *fastest* (“the fastest pace you would use on a run”) self-selected speeds (Figure 3). During this warmup, markers on the lateral calcaneus and base of the fifth metatarsal were recorded using a conventional video camera (Exilim EX-FH25, Casio, Shibuya City, Tokyo, Japan; 120 Hz). Foot strike angle was calculated by subtracting a neutral standing foot angle from the foot angle at initial contact (Kinovea 0.9.5). Positive values indicate a more dorsiflexed foot at initial contact with values > 0.14 radians corresponding to rear-foot strike, -0.03 to 0.14 radians to mid-foot strike, and < -0.03 radians to forefoot strike [83]. After warm-up, five stances per side were collected at each speed for two surface conditions: (1) with a *track* surface covering the runway and force plate, and (2) with no covering on the hardwood *floor* of a basketball court. Participants always progressed from their slowest to fastest speeds, but the order of foot and surface was pseudo-randomized.

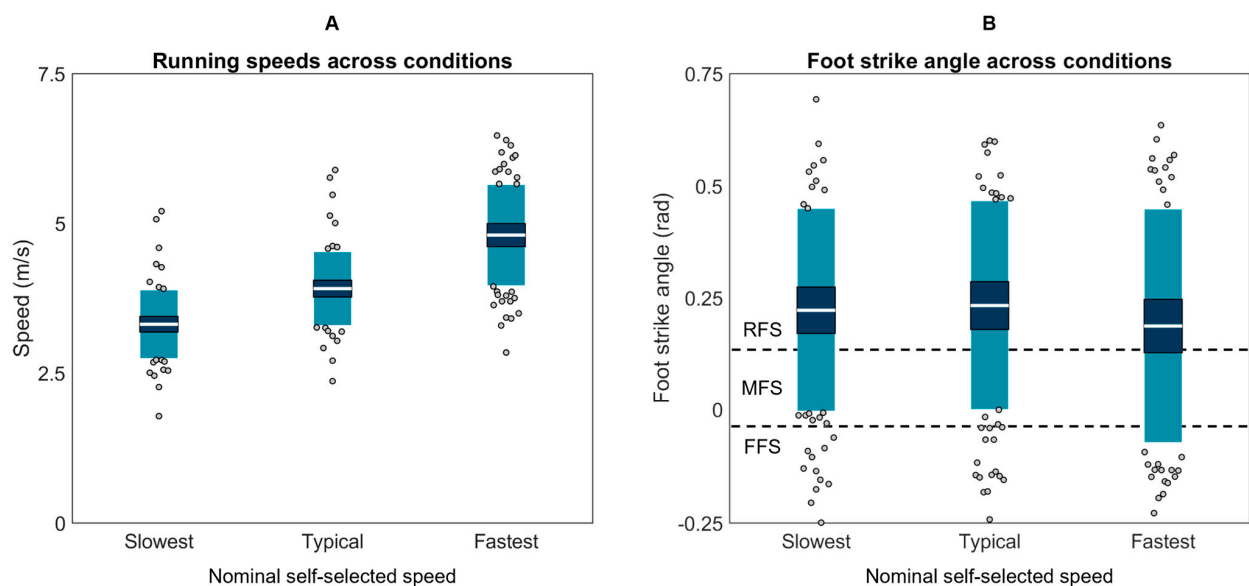


Figure 3. (A) Mean speeds and (B) foot strike angles used by each participant across the slowest, typical, and fastest running speed conditions. The white horizontal line represents the mean; dark blue represents $\pm 95\%$ confidence interval (± 1.96 SEM) around the mean; and light blue represents ± 1 SD around the mean. Gray dots represent participants outside ± 1 SD. RFS is rear foot strike, MFS is mid foot strike, and FFS is fore foot strike.

IMU data were synchronized within 100 ns of each other with a wireless network hub (Advanced Inertia Gateway, Inertia Technology, Enschede, The Netherlands). This hub sent voltage pulses that were synchronously recorded by IMU software (Inertia Studio v3.5.0, Inertia Technology, Enschede, The Netherlands) and a custom MATLAB script that simultaneously recorded speed and force data (R2018b, MathWorks, Natick, MA, USA). Pulse trains were cross correlated to synchronize signals. During data processing, we observed small timing discrepancies caused by the initialization of discrete MATLAB data acquisitions and small variances between the sampling rates of the IMU and MATLAB systems. Although extremely small, these discrepancies could accumulate over the course of the ~ 60 min data collection, leading to timing differences between the first and last synch events of a data collection (on the order of 10 s of ms). To ensure the input acceleration data were perfectly matched with the target force data, a conservative approach was used and only trials containing a synch event were analyzed (642 of 4440 trials). All other trials were discarded to ensure millisecond-level accuracy.

2.4. IMU Data Processing

Calibration matrices were applied to the IMU data. Quiet periods were identified (angular velocity < 0.5 rad/s and jerk < 0.01 m/s³ for at least 100 ms) and used to remove biases. Saturated frames from the primary accelerometer ($|a| > 15.5$ g) were replaced with corresponding frames from the secondary accelerometer. Data were filtered with a 4th-order 50-Hz low-pass Butterworth filter. Angular velocity was drift-corrected using a Madgwick filter [84–87]. Starting at each quiet period, accelerations were used to estimate the IMU position in the inertial reference frame, then angular velocities were used to estimate frame-by-frame changes in IMU orientation and remove the gravity component from accelerations [88]. Data were then expressed in a segment coordinate system based on the principal component that explained the most variance in angular velocity during running (the medial-lateral axis) and the gravity vector during quiet standing [89,90]. IMU data during stance were extracted based on the instant the time-synchronized vertical force crossed a 10 N threshold. For more detailed IMU processing, see Supplement SA.

2.5. Force Data Processing

Force data were filtered with a 4th-order 50-Hz low-pass Butterworth filter. A vertical force threshold of 10 N was used to define the start and end of stance. The first (or ‘impact’) peak was identified by performing a Fourier transform on the vertical GRF, then reconstructing a time domain signal from the ≥ 10 Hz high frequency (‘HiF’) components with an inverse Fourier transform [91]. First peak magnitude was defined as the magnitude of the original vertical GRF signal at the time when the HiF signal achieved its earliest peak occurring after 5% of stance duration. The loading rate was calculated from 20 to 80% of stance onset to first peak [92]. The second (or ‘active’) peak was defined as the maximum magnitude of the vertical GRF (or the magnitude of the second peak if two peaks were present). The average was also calculated across stance. These methods are depicted for a single stance in Figure 4.

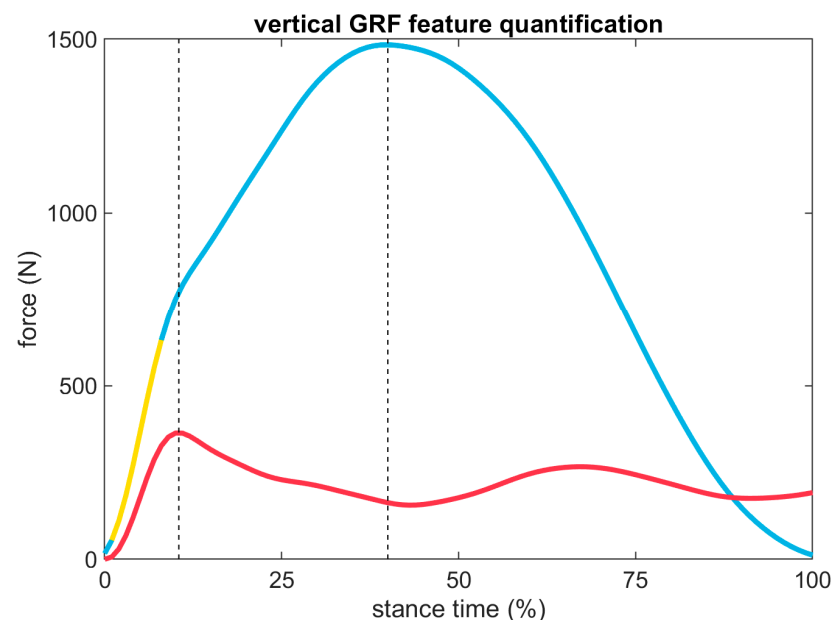


Figure 4. Vertical GRF (blue) and HiF reconstruction (red) for an example stance. Vertical dashed lines indicate the timing of first and second vertical GRF peaks. Note, although the first peak is difficult to visually identify in the original signal (blue), a consistent point in the HiF signal can still be identified (red). The yellow highlighted region from 20 to 80% of the first peak was used to calculate the loading rate.

2.6. Analysis

The first peak, loading rate, second peak, average force, and force time series were estimated with each capable method (Table 2). For methods that required a model to be built (see Supplement SB), these features were estimated using a leave one out analysis where 74 models were iteratively trained with data from 73 participants, then used to estimate features for the single participant the model was not trained on. Errors were calculated by subtracting the ground truth force plate value from the estimated value (for first peak, loading rate, second peak, or average) or by calculating the RMSE (for time series).

One sample *t*-tests were used to compare each method's error to the gold standard (0 error). Significance was set at $p \leq 0.05$ with a false discovery rate (FDR) procedure to correct for multiple comparisons.

To account for the non-independence of the data (642 trials from 74 participants) and ensure proper estimation of variance, an adaptation of the Bland–Altman method was used [93]. Errors were entered into linear mixed-effects models in R (v4.2.2; R Foundation for Statistical Computing, Indianapolis, IN, USA) as described in Carstensen et al.'s approach to linked replicates [94,95]:

$$y_{method,participant,trial} = a_{method} + b_{participant} + C_{method,participant} + D_{participant,trial} + \varepsilon_{method,participant,trial} \quad (1)$$

where y corresponds to the model estimated error, lower case terms correspond to fixed effects, upper case terms correspond to random effects, and ε corresponds to error. Model assumptions of independence, normality, and homoscedasticity were validated by plotting within-participant variances against within-participant means, histograms of residuals, residuals for each level of random effect, and residuals as a function of fitted value. Method-specific variance components were extracted using the 'MethComp' package for R [96]:

$$C_{method,participant} \sim N(0, \tau_{method}^2) \quad (2)$$

$$\varepsilon_{method,participant,trial} \sim N(0, \sigma_{method}^2) \quad (3)$$

where the values of C and ε are normally distributed about zero with variances of τ_{method}^2 and σ_{method}^2 for each method. This allowed for the estimation of: (1) method biases that quantify accuracy (mean error); (2) repeatability coefficients (RC) that quantify the largest absolute difference predicted between two measurements on the same participant under identical circumstances; and (3) limits of agreement (LOA) that quantify precision (limits within which 95% of future errors for a given method are expected to fall), using the equations:

$$RC_{method} = \pm 2.83\sigma_{method} \quad (4)$$

$$LOA_{method} = \pm 1.96\sqrt{\tau_0^2 + \tau_{method}^2 + \sigma_0^2 + \sigma_{method}^2} \quad (5)$$

where τ_0^2 and σ_0^2 correspond to variances for the gold standard.

To evaluate if any potential explanatory variables affected error, a second set of linear mixed effects models was developed for each method. These models added surface, speed, and foot strike angle as fixed effects. A $p \leq 0.05$ for any fixed effect was interpreted as that fixed effect accounting for a significant amount of a method's error (i.e., model-estimated force was significantly affected by the running surface, speed, and/or foot strike angle).

3. Results

3.1. First Peak

Using Carstensen's method for linked replicates [94], biases, RCs, and LOAs were calculated for each method capable of first peak estimation (Figure 5; Table 3). First peak magnitude was estimated at the shank by one method, which was among the best perform-

ing (biases < 200 N): ‘Higgins shank’ (+16.46 ± 879.51 N or +1.35 ± 72.23%; bias ± LOA). At the hip by ‘Kiernan hip’ (−43.18 ± 957.18 N or −3.55 ± 78.61%) and ‘Higgins hip’ (+16.46 ± 906.02 N or +1.35 ± 74.41%). At the sacrum by nine methods, with four among the best performing: ‘Kim displacement’ (−132.74 ± 823.12 N or −10.90 ± 67.60%), ‘Kiernan sacrum’ (−33.81 ± 961.22 N or −2.78 ± 78.94%), ‘Pogson’ (−101.25 ± 839.57 N or −8.32 ± 68.95%), and ‘Pogson xynorm’ (−115.06 ± 850.78 N or −9.45 ± 69.87%).

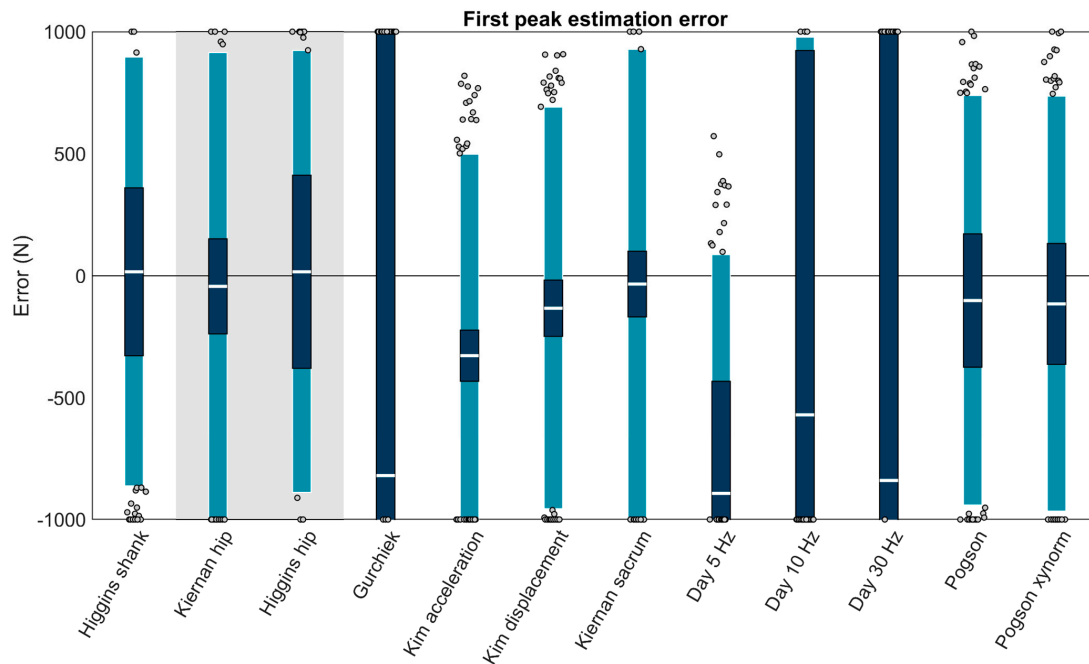


Figure 5. Bias (white bar), ±RC (dark blue), and ±LOA (light blue) in first peak estimation for each capable method. Gray dots represent trials falling outside the LOA. Values outside ± 1000 N are plotted at the axis limits. A value of 0 represents perfect agreement with the force plate. Positive values indicate the method overestimated the first peak. Negative values indicate the method underestimated the first peak. The method with a white background on the left is for accelerometers on the shank, methods with a gray background are for the hip, and methods with a white background on the right are for the sacrum.

Table 3. Best performing first peak estimation methods. Overall performance shown as biases (accuracy), RCs (repeatability), and LOAs (precision) color-coded from the absolute minimum (green) to absolute maximum (purple) values observed within-column. Biases that significantly differed from 0 ($p \leq 0.05$ with FDR correction) marked *. Performance across conditions shown as coefficients for the intercept of surface (added to model-estimated error for the track condition but not the floor condition) and slopes for running speed (in m/s) and foot strike angle (in radians). If surface, speed, or foot strike explains a significant ($p \leq 0.05$) amount of error it is highlighted pink and marked *.

| Method | Overall Performance | | | Performance across Conditions | | |
|------------------|---------------------|--------|----------|-------------------------------|---------|-------------|
| | Bias (N) | RC (N) | LOAs (N) | Speed | Surface | Foot Strike |
| Higgins shank | +16.46 | 343.88 | 879.51 | −83.70 * | 11.89 | −243.59 * |
| Kiernan hip | −43.18 * | 194.73 | 957.18 | −191.48 * | −5.69 | −300.01 * |
| Higgins hip | +16.46 | 395.53 | 906.02 | −131.03 * | −1.19 | −231.61 * |
| Kim displacement | −132.74 * | 115.26 | 823.12 | −181.87 * | −12.86 | −387.83 * |
| Kiernan sacrum | −33.81 * | 134.60 | 961.22 | −183.19 * | −11.26 | −312.66 * |
| Pogson | −101.25 * | 273.04 | 839.57 | −135.50 * | −14.55 | −535.86 * |
| Pogson xynormed | −115.06 * | 247.59 | 850.78 | −170.00 * | 2.42 | −427.28 * |

column [min] column [max]

A second set of linear mixed effects models were performed on each of the best performing methods (biases < 200 N) to examine the role of running speed, surface, and foot strike angle as potential explanatory variables. These models revealed that error in each of the best performing methods was significantly explained by running speed and foot strike angle (p values ≤ 0.05) but not by running surface (p values > 0.05) (Table 3). To illustrate these effects, model-predicted biases were plotted as a function of speed and foot strike angle (Figure 6). Yellow, red, and purple colors in these plots correspond to overestimations (positive errors where the estimate has a greater magnitude than the gold standard), while darker blue colors correspond to underestimations (negative errors where the estimate has a smaller magnitude than the gold standard). All methods showed the same general pattern with overestimates at low speeds and foot strike angles, and underestimates at high speeds and foot strike angles.

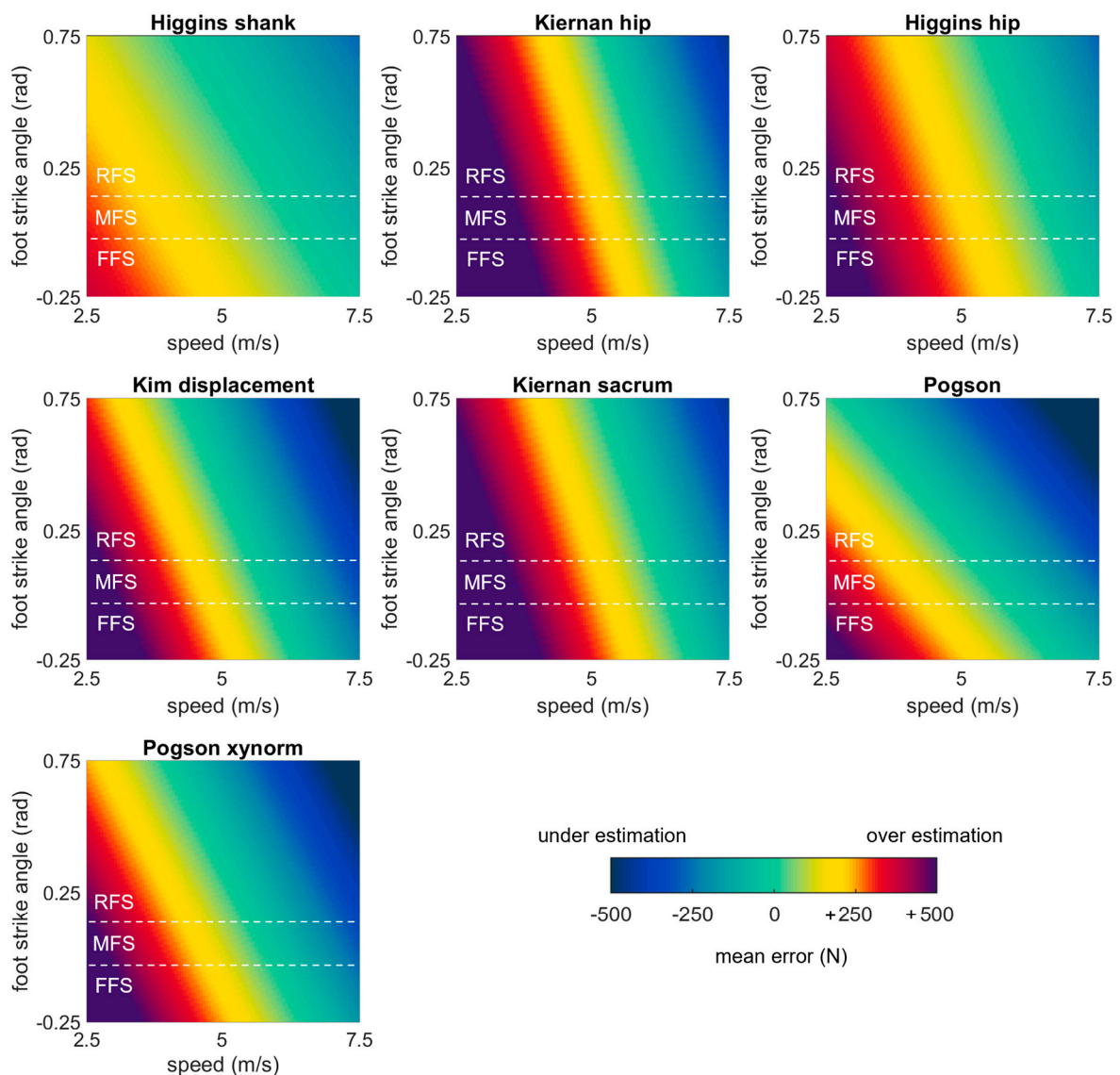


Figure 6. Bias in first peak estimates predicted by mixed effects models for each of the best performing methods, plotted as a function of speed and foot strike angle. Green values represent perfect agreement with the gold standard; yellow, red, and purple values represent positive biases (overestimates); darker blue values represent negative biases (underestimates). Foot strike angles corresponding to rear-, mid-, and fore-foot strike patterns are labelled (RFS, MFS, and FFS) and divided with dashed white lines.

3.2. Loading Rate

Three methods were capable of estimating loading rate from shank accelerations and were among the best performing methods (biases < 10 kN/s): ‘Veras shank res’ ($+4.37 \pm 62.56$ kN/s or $+8.26 \pm 118.16\%$; bias \pm LOA), ‘Veras shank y’ (-3.25 ± 59.96 kN/s or $-6.13 \pm 113.25\%$), and ‘Higgins shank’ (-1.71 ± 56.69 kN/s or $-3.23 \pm 107.08\%$). Three were capable of estimating loading rate from hip acceleration but only ‘Higgins hip’ was among the best performing ($+0.02 \pm 52.36$ kN/s or $+0.04 \pm 98.90\%$). Ten methods were capable of estimating loading rate from sacrum acceleration, of these, the best performing were: ‘Kim displacement’ (-6.34 ± 50.52 kN/s or $-11.98 \pm 95.43\%$), ‘Veras sacrum res’ (-1.95 ± 49.34 kN/s or $-3.68 \pm 93.19\%$), ‘Veras sacrum y’ (-1.04 ± 50.52 kN/s or $-1.96 \pm 95.42\%$), ‘Pogson’ (-5.32 ± 51.82 kN/s or $-10.04 \pm 97.87\%$), and ‘Pogson xynorm’ (-7.83 ± 51.21 kN/s or $-14.80 \pm 96.73\%$) (Figure 7).

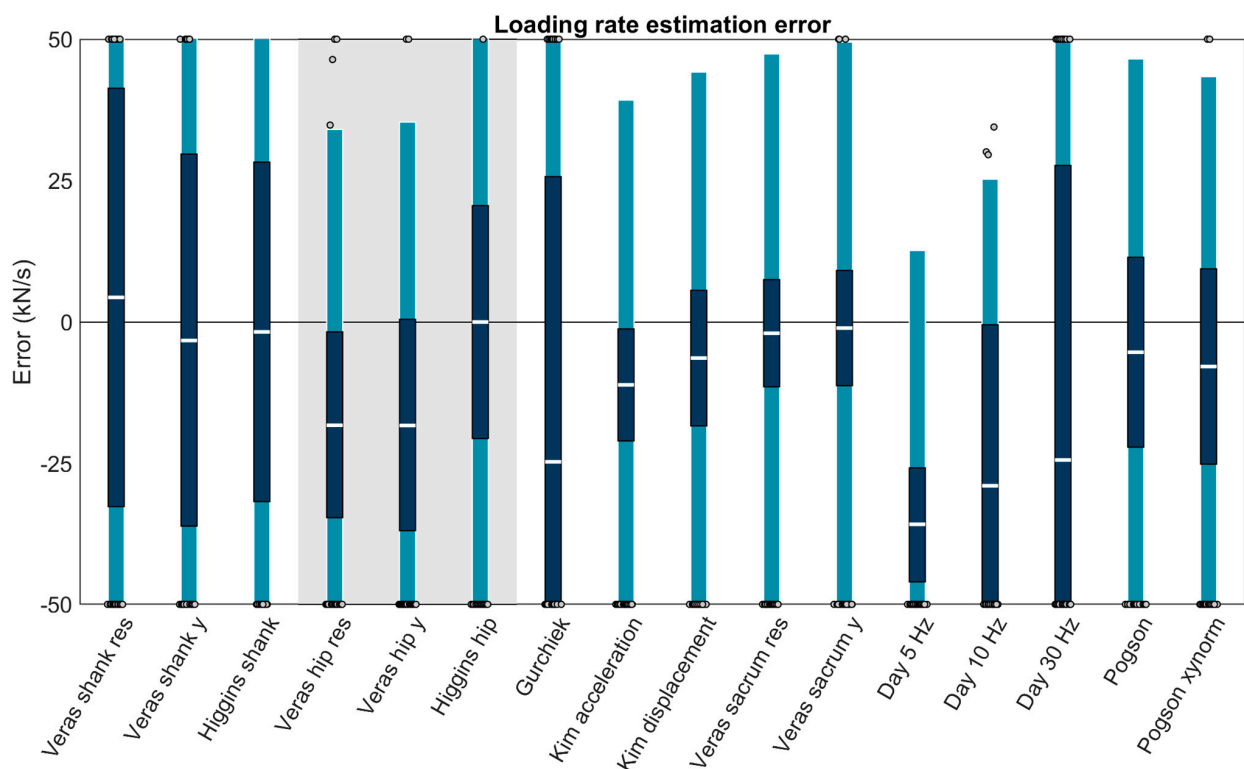



Figure 7. Bias (white bar), \pm RC (dark blue), and \pm LOA (light blue) in the loading rate for each capable method. Gray dots represent trials falling outside the LOA. Values outside ± 50 kN/s are plotted at the axis limits. A value of 0 represents perfect agreement with the force plate. Positive values indicate the method overestimated loading rate. Negative values indicate the method underestimated loading rate. Methods with a white background on the left are for accelerometers on the shank, methods with a gray background are for the hip, and methods with a white background on the right are for the sacrum.

The linear mixed effects models examining the role of running speed, surface, and foot strike angle on the best performing methods (biases < 10 kN/s) revealed that error in all methods was significantly explained by running speed and foot strike angle (p values ≤ 0.05) but not by running surface (p values > 0.05) (Table 4). All methods showed a similar pattern of overestimating loading rates at low speeds and foot strike angles and underestimating at high speeds and foot strike angles (Figure 8).

Table 4. Best performing loading rate estimation methods. Overall performance shown as biases (accuracy), RCs (repeatability), and LOAs (precision) color-coded from the absolute minimum (green) to absolute maximum (purple) values observed within-column. Biases that significantly differed from 0 ($p \leq 0.05$ with FDR correction) are marked *. Performance across conditions shown as coefficients for the intercept of surface (added to model-estimated error for the track condition but not the floor condition) and slopes for running speed (in m/s) and foot strike angle (in radians). If surface, speed, or foot strike explains a significant ($p \leq 0.05$) amount of error, it is highlighted pink and marked *.

| Method | Overall Performance | | | Performance across Conditions | | |
|------------------|---------------------|-----------|-------------|-------------------------------|---------|-------------|
| | Bias (kN/s) | RC (kN/s) | LOAs (kN/s) | Speed | Surface | Foot Strike |
| Veras shank res | +4.37 * | 36.96 | 62.56 | -8.28 * | -0.29 | -36.00 * |
| Veras shank y | -3.25 * | 32.96 | 59.96 | -9.14 * | -0.52 | -33.12 * |
| Higgins shank | -1.71 | 29.99 | 56.69 | -3.47 * | 0.92 | -16.17 * |
| Higgins hip | +0.02 | 20.58 | 52.36 | -10.66 * | -0.61 | -21.41 * |
| Kim displacement | -6.34 * | 11.98 | 50.52 | -6.90 * | -1.45 | -37.74 * |
| Veras sacrum res | -1.95 | 9.47 | 49.34 | -12.36 * | -0.96 | -22.08 * |
| Veras sacrum y | -1.04 | 10.18 | 50.52 | -13.83 * | -0.96 | -27.55 * |
| Pogson | -5.32 * | 16.78 | 51.82 | -5.98 * | -1.04 | -40.57 * |
| Pogson xynorm | -7.83 * | 17.25 | 51.21 | -5.99 * | -1.03 | -42.16 * |

column |min|  column |max|

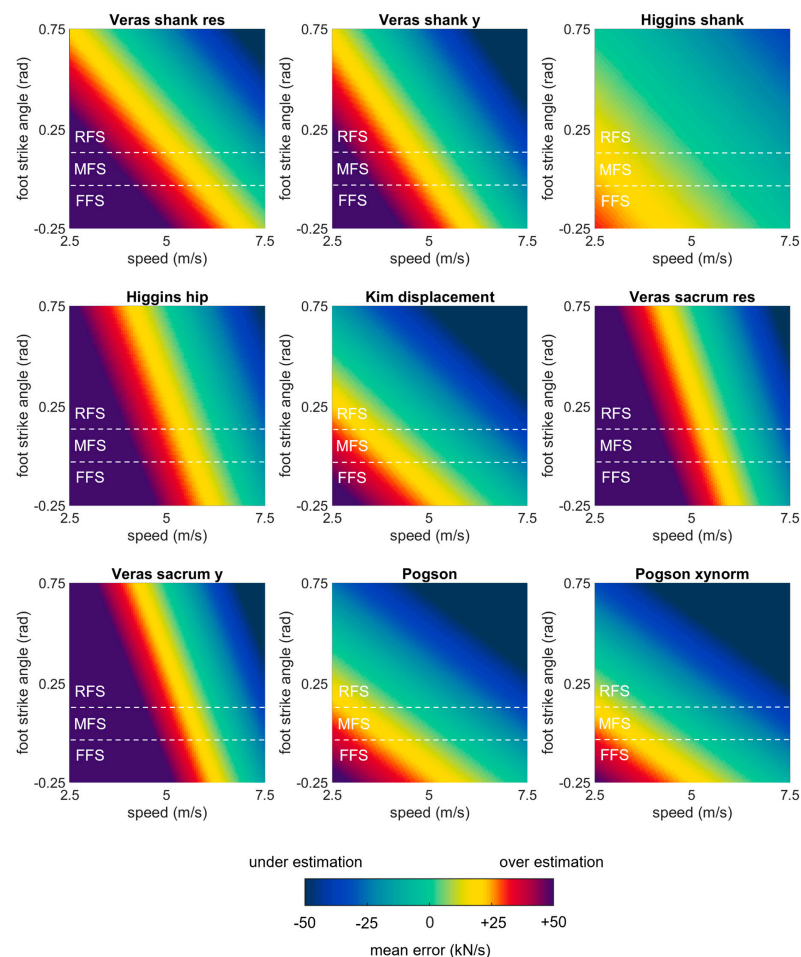


Figure 8. Bias in loading rate estimates predicted by mixed effects models for each of the best performing methods, plotted as a function of speed and foot strike angle. Green values represent perfect agreement with the gold standard; yellow, red, and purple values represent positive biases (overestimates); darker blue values represent negative biases (underestimates). Foot strike angles corresponding to rear-, mid-, and fore-foot strike patterns are labelled (RFS, MFS, and FFS) and divided with dashed white lines.

3.3. Second Peak

Four methods could estimate second peak from shank accelerations, all were among the best performing methods (biases < 100 N): ‘Charry’ (+58.48 ± 478.42 N or +3.53 ± 28.85%; bias ± LOA), ‘Thiel’ (−90.32 ± 1162.97 N or −5.45 ± 70.12%), ‘Veras shank res’ (−98.67 ± 470.96 N or −5.95 ± 28.40%), and ‘Veras shank y’ (−88.75 ± 471.45 N or −5.35 ± 28.43%). Five methods could estimate second peak from hip accelerations, with two among the best performing: ‘Neugebauer’ (+14.04 ± 488.09 N or +0.85 ± 29.43%) and ‘Kiernan hip’ (−7.56 ± 572.04 N or −0.46 ± 34.49%). At the sacrum, 16 methods could estimate second peak, with seven among the best performing: ‘Kim acceleration’ (−27.21 ± 721.47 N or −1.64 ± 43.50%), ‘Kim displacement’ (+20.68 ± 696.86 N or +1.25 ± 42.02%), ‘Kiernan sacrum’ (−4.20 ± 563.80 N or −0.25 ± 33.99%), ‘Veras sacrum y’ (−74.18 ± 492.08 N or −4.47 ± 29.67%), ‘Wundersitz 20 Hz’ (+34.19 ± 1089.85 N or +2.06 ± 65.71%), ‘Pogson’ (+25.36 ± 745.01 N or +1.53 ± 44.92%), and ‘Pogson xynorm’ (−2.39 ± 730.18 N or −0.14 ± 44.02%) (Figure 9).

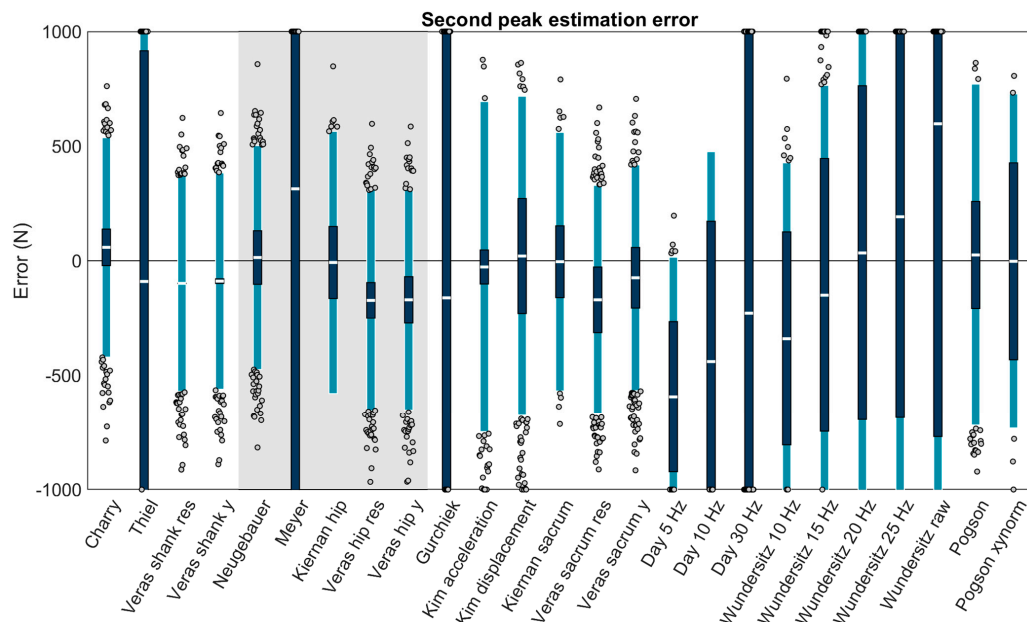


Figure 9. Bias (white bar), ± RC (dark blue), and ± LOA (light blue) in the second peak estimation for each capable method. Gray dots represent trials falling outside the LOA. Values outside ± 1000 N are plotted at the axis limits. A value of 0 represents perfect agreement with the force plate. Positive values indicate the method overestimated second peak. Negative values indicate the method underestimated second peak. Methods with a white background on the left are for accelerometers on the shank, methods with a gray background are for the hip, and methods with a white background on the right are for the sacrum.

The linear mixed effects models examining the role of running speed, surface, and foot strike angle on the best performing methods revealed that error in all methods was significantly explained by running speed (p values ≤ 0.05). Foot strike angle also significantly explained error in eight of 13 methods (p values ≤ 0.05) but not in ‘Kim acceleration’, ‘Kim displacement’, ‘Wundersitz 20 Hz’, ‘Pogson’, and ‘Pogson xynorm’ (p values > 0.05). Surface explained significant variation in only one method: ‘Wundersitz 20 Hz’ (all other p values > 0.05) (Table 5). Most methods showed the same general pattern with overestimates at low speeds and high foot strike angles. There were two exceptions: ‘Thiel’ had underestimates at low speeds and foot strike angles and overestimates at high speeds and foot strike angles, while ‘Pogson’ showed generally stable performance with a small (but significant) increase in error at faster speeds (Figure 10).

Table 5. Best performing second peak estimation methods. Overall performance shown as biases (accuracy), RCs (repeatability), and LOAs (precision) color-coded from the absolute minimum (green) to absolute maximum (purple) values observed within-column. Biases that significantly differed from 0 ($p \leq 0.05$ with FDR correction) are marked *. Performance across conditions shown as coefficients for the intercept of surface (added to model-estimated error for the track condition but not the floor condition) and slopes for running speed (in m/s) and foot strike angle (in radians). If surface, speed, or foot strike explains a significant ($p \leq 0.05$) amount of error, it is highlighted pink and marked *.

| Method | Overall Performance | | | Performance across Conditions | | |
|------------------|---------------------|---------|----------|-------------------------------|---------|-------------|
| | Bias (N) | RC (N) | LOAs (N) | Speed | Surface | Foot Strike |
| Charry | 58.48 * | 79.70 | 478.42 | -20.20 * | 4.46 | 200.08 * |
| Thiel | -90.32 * | 1006.17 | 1162.97 | 192.97 * | 17.93 | 484.50 * |
| Veras shank res | -98.67 * | 0.53 | 470.96 | -30.82 * | 3.04 | 182.12 * |
| Veras shank y | -88.75 * | 10.07 | 471.45 | -29.67 * | 3.88 | 178.48 * |
| Neugebauer | 14.04 | 116.89 | 488.09 | -23.53 * | 1.69 | 244.81 * |
| Kiernan hip | -7.56 | 157.16 | 572.04 | -44.59 * | 9.34 | 113.21 * |
| Kim acceleration | -27.21 * | 74.26 | 721.47 | -39.70 * | 0.25 | 102.31 |
| Kim displacement | 20.68 | 250.96 | 696.86 | -61.10 * | 1.81 | 75.90 |
| Kiernan sacrum | -4.20 | 156.73 | 563.80 | -60.27 * | 8.40 | 138.82 * |
| Veras sacrum y | -74.18 * | 132.12 | 492.08 | -22.25 * | 4.19 | 268.09 * |
| Wundersitz 20 Hz | 34.19 | 729.30 | 1089.85 | -51.84 * | 63.98 * | 205.90 |
| Pogson | 25.36 | 233.50 | 745.01 | 28.92 * | 2.74 | -27.38 |
| Pogson xynorm | -2.39 | 429.45 | 730.18 | -23.62 * | 18.74 | 93.89 |

column |min| column |max|

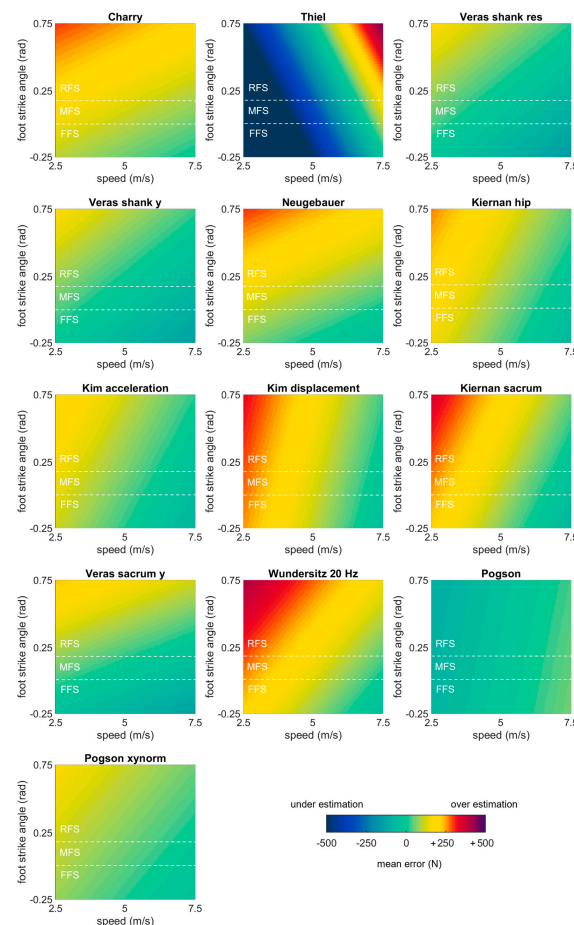


Figure 10. Bias in second peak estimates predicted by mixed effects models for each of the best performing methods, plotted as a function of speed and foot strike angle. Green values represent perfect agreement with the gold standard; yellow, red, and purple values represent positive biases (overestimates); darker blue values represent negative biases (underestimates). Foot strike angles corresponding to rear-, mid-, and fore-foot strike patterns are labelled (RFS, MFS, and FFS) and divided with dashed white lines.

3.4. Average Force

Eight sacrum methods could calculate the average force from an estimated time series, the four best performing (biases < 100 N) were: ‘Kim acceleration’ (-67.76 ± 381.52 N or $-6.87 \pm 38.68\%$; bias \pm LOA), ‘Kim displacement’ ($+7.66 \pm 394.37$ N or $+0.78 \pm 39.98\%$), ‘Pogson’ (-3.18 ± 367.81 N or $-0.32 \pm 37.29\%$), and ‘Pogson xynorm’ (-4.87 ± 278.80 N or $-0.49 \pm 28.26\%$) (Figure 11).

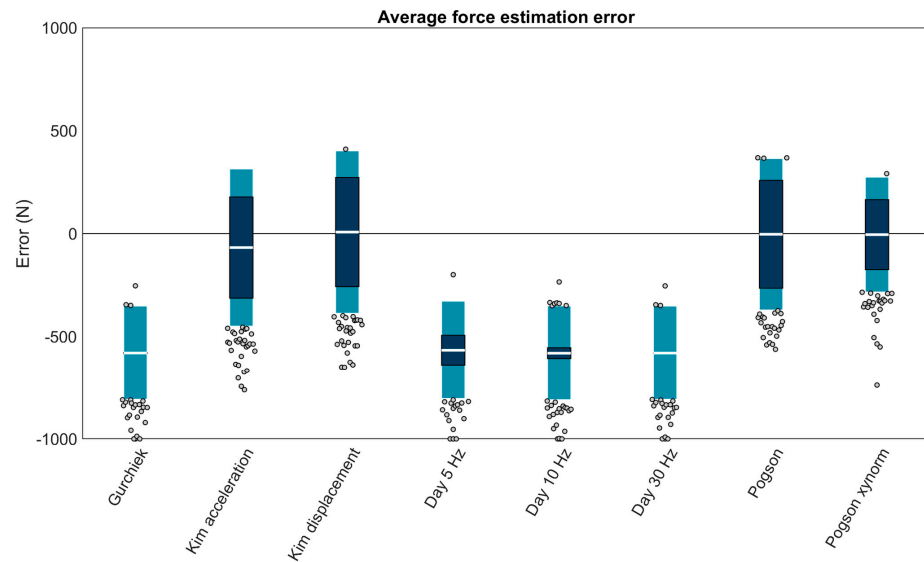



Figure 11. Bias (white bar), \pm RC (dark blue), and \pm LOA (light blue) in average force estimation for each capable method. Gray dots represent trials falling outside the LOA. Values outside ± 1000 N are plotted at the axis limits. A value of 0 represents perfect agreement with the force plate. Positive values indicate the method overestimated the average force. Negative values indicate the method underestimated the average force. All methods were for the sacrum.

The linear mixed effects models examining the role of running speed, surface, and foot strike angle on each of the best performing methods revealed that error in all methods except ‘Pogson’ was significantly explained by running speed (p values ≤ 0.05). Foot strike angle significantly explained error in only ‘Pogson’ (all other p values > 0.05). Surface significantly explained error in only ‘Pogson xynorm’ (all other p values > 0.05) (Table 6). Three methods showed the same general pattern with overestimates at low speeds. ‘Pogson’ was an exception, showing generally stable performance with a small (but significant) increase in error at lower foot strike angles (Figure 12).

Table 6. Best performing average force estimation methods. Overall performance shown as biases (accuracy), RCs (repeatability), and LOAs (precision) color-coded from the absolute minimum (green) to absolute maximum (purple) values observed within-column. Biases that significantly differed from 0 ($p \leq 0.05$ with FDR correction) are marked *. Performance across conditions shown as coefficients for the intercept of surface (added to model-estimated error for the track condition but not the floor condition) and slopes for running speed (in m/s) and foot strike angle (in radians). If surface, speed, or foot strike explains a significant ($p \leq 0.05$) amount of error, it is highlighted pink and marked *.

| Method | Overall Performance | | | Performance across Conditions | | |
|------------------|---------------------|--------|----------|-------------------------------|---------|-------------|
| | Bias (N) | RC (N) | LOAs (N) | Speed | Surface | Foot Strike |
| Kim acceleration | -67.76^* | 245.71 | 381.52 | -66.45^* | 3.96 | -24.06 |
| Kim displacement | 7.66 | 265.11 | 394.37 | -67.73^* | 5.20 | -36.48 |
| Pogson | -3.18 | 261.96 | 367.81 | -5.48 | 3.68 | -59.42^* |
| Pogson xynorm | -4.87 | 169.92 | 278.80 | -54.79^* | 14.12* | -24.00 |

column |min|  column |max|

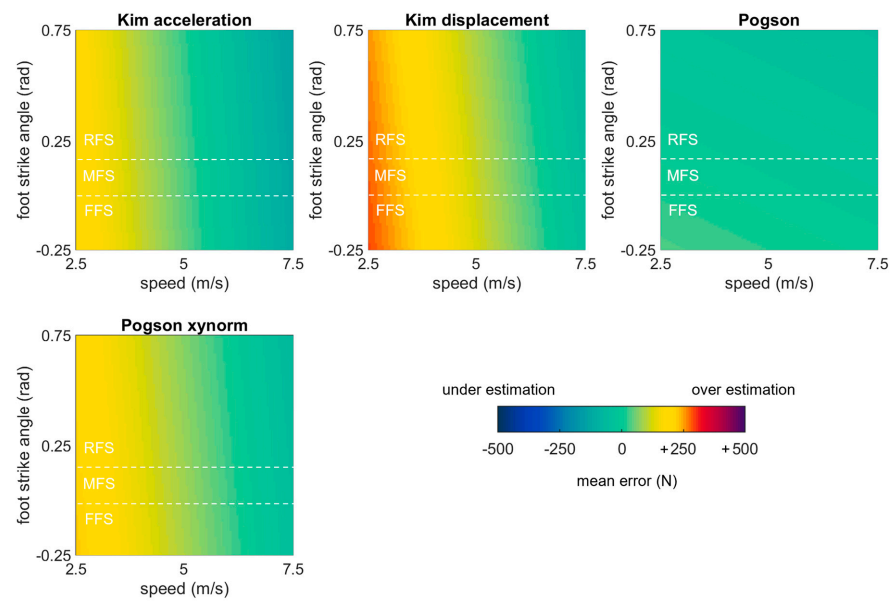


Figure 12. Bias in average force estimates predicted by mixed effects models for each of the best performing methods, plotted as a function of speed and foot strike angle. Green values represent perfect agreement with the gold standard; yellow, red, and purple values represent positive biases (overestimates); darker blue values represent negative biases (underestimates). Foot strike angles corresponding to rear-, mid-, and fore-foot strike patterns are labelled (RFS, MFS, and FFS) and divided with dashed white lines.

3.5. Time Series

Eight sacrum methods could estimate force time series, of these the four best performing (RMSEs < 250 N) were: ‘Kim acceleration’ (245.69 ± 212.85 N or $24.91 \pm 21.58\%$; mean \pm LOA), ‘Kim displacement’ (240.43 ± 215.57 N or $24.37 \pm 21.85\%$), ‘Pogson’ (237.33 ± 218.09 N or $+24.06 \pm 22.11\%$), and ‘Pogson xynorm’ (180.32 ± 230.62 N or $18.28 \pm 23.38\%$) (Figure 13).

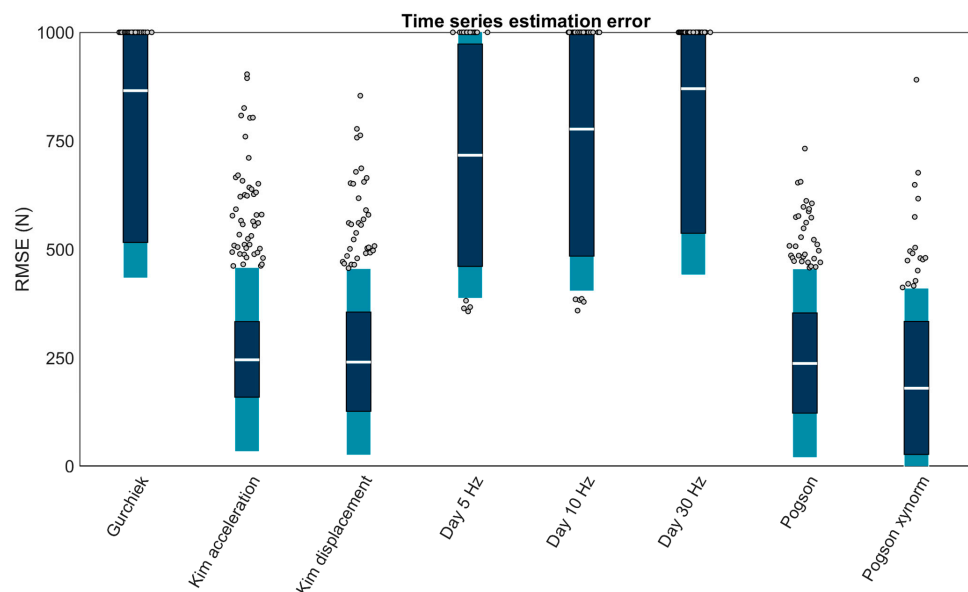



Figure 13. Mean RMSE (white bar), \pm RC (dark blue), and \pm LOA (light blue) in time series estimation for each capable method. Gray dots represent trials falling outside the LOA. Values > 1000 N are plotted at the axis limit. A value of 0 represents perfect agreement with the force plate. Positive values indicate larger errors. All methods were for the sacrum.

The linear mixed effects models examining the role of running speed, surface, and foot strike angle on each of the best performing methods (RMSEs < 250 N) revealed that error in all methods was significantly explained by running speed (p values ≤ 0.05) but not by foot strike angle or running surface (p values > 0.05) (Table 7). All methods showed the same general pattern with higher predicted RMSEs at higher speeds but ‘Pogson xynorm’ had lower predicted mean RMSEs than any other method across its entire range (Figure 14).

Table 7. Best performing force time series estimation methods. Overall performance shown as biases (accuracy), RCs (repeatability), and LOAs (precision) color-coded from the absolute minimum (green) to absolute maximum (purple) values observed within-column. RMSEs that significantly differed from 0 ($p \leq 0.05$ with FDR correction) are marked *. Performance across conditions shown as coefficients for the intercept of surface (added to model-estimated error for the track condition but not the floor condition) and slopes for running speed (in m/s) and foot strike angle (in radians). If surface, speed, or foot strike explains a significant ($p \leq 0.05$) amount of error, it is highlighted pink and marked *.

| Method | Overall Performance | | | Performance across Conditions | | |
|------------------|---------------------|--------|----------|-------------------------------|---------|-------------|
| | RMSE (N) | RC (N) | LOAs (N) | Speed | Surface | Foot Strike |
| Kim acceleration | 245.69 * | 88.18 | 212.85 | 36.30 * | −3.45 | −32.21 |
| Kim displacement | 240.43 * | 115.29 | 215.57 | 11.64 * | 4.84 | −10.52 |
| Pogson | 237.33 * | 116.38 | 218.09 | 16.84 * | −4.09 | −40.05 |
| Pogson xynorm | 180.32 * | 153.83 | 230.62 | 34.94 * | 0.31 | −0.85 |

column |min|  column |max|

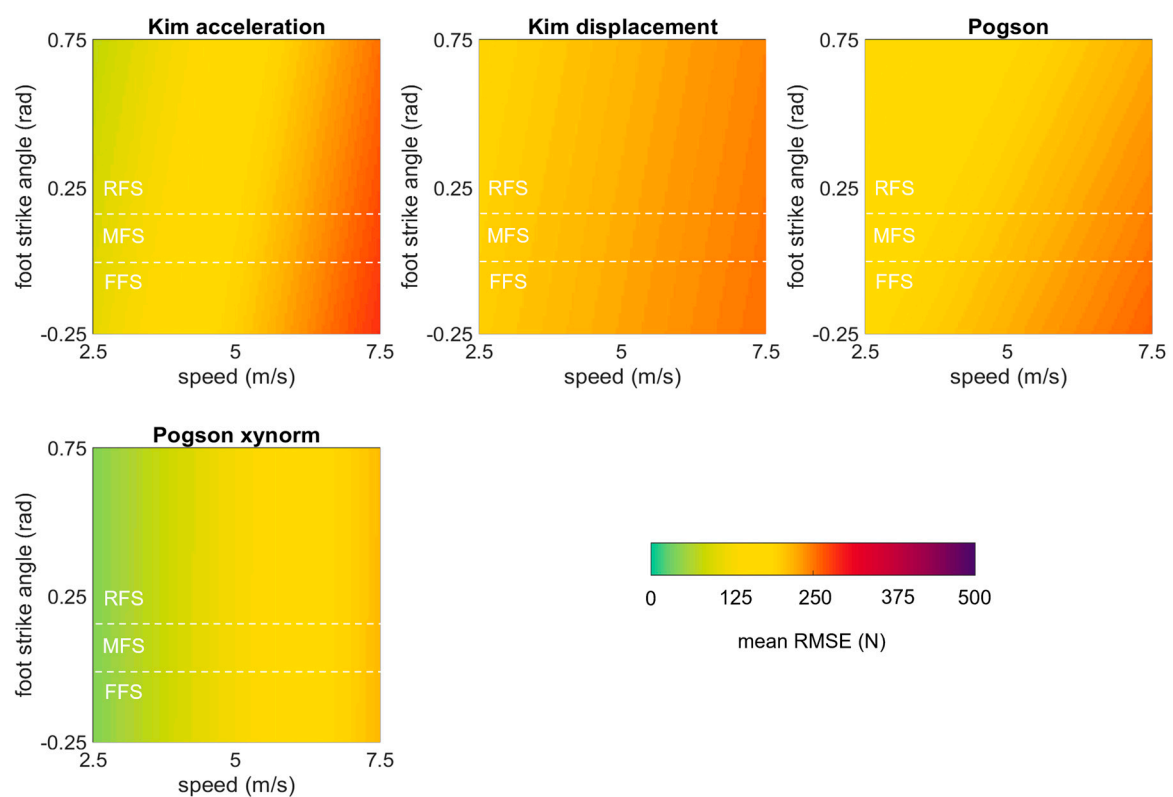


Figure 14. Mean RMSE in the estimated force time series predicted by mixed effects models for each of the best performing methods, plotted as a function of speed and foot strike angle. Green values represent perfect agreement with the gold standard; yellow, red, and purple values represent higher predicted mean RMSEs. Foot strike angles corresponding to rear-, mid-, and fore-foot strike patterns are labelled (RFS, MFS, and FFS) and divided with dashed white lines.

The ‘Kim acceleration’ and ‘Kim displacement’ methods produced highly stereotyped time series with little variation (i.e., regardless of the input acceleration, the output force estimate was similar) (Figure 15). This caused relatively large errors, particularly at the locations of the first and second peak. In contrast, ‘Pogson xynorm’ had much more variation in its estimated values and better fit the data (lower errors), however, errors remained high around the first peak.

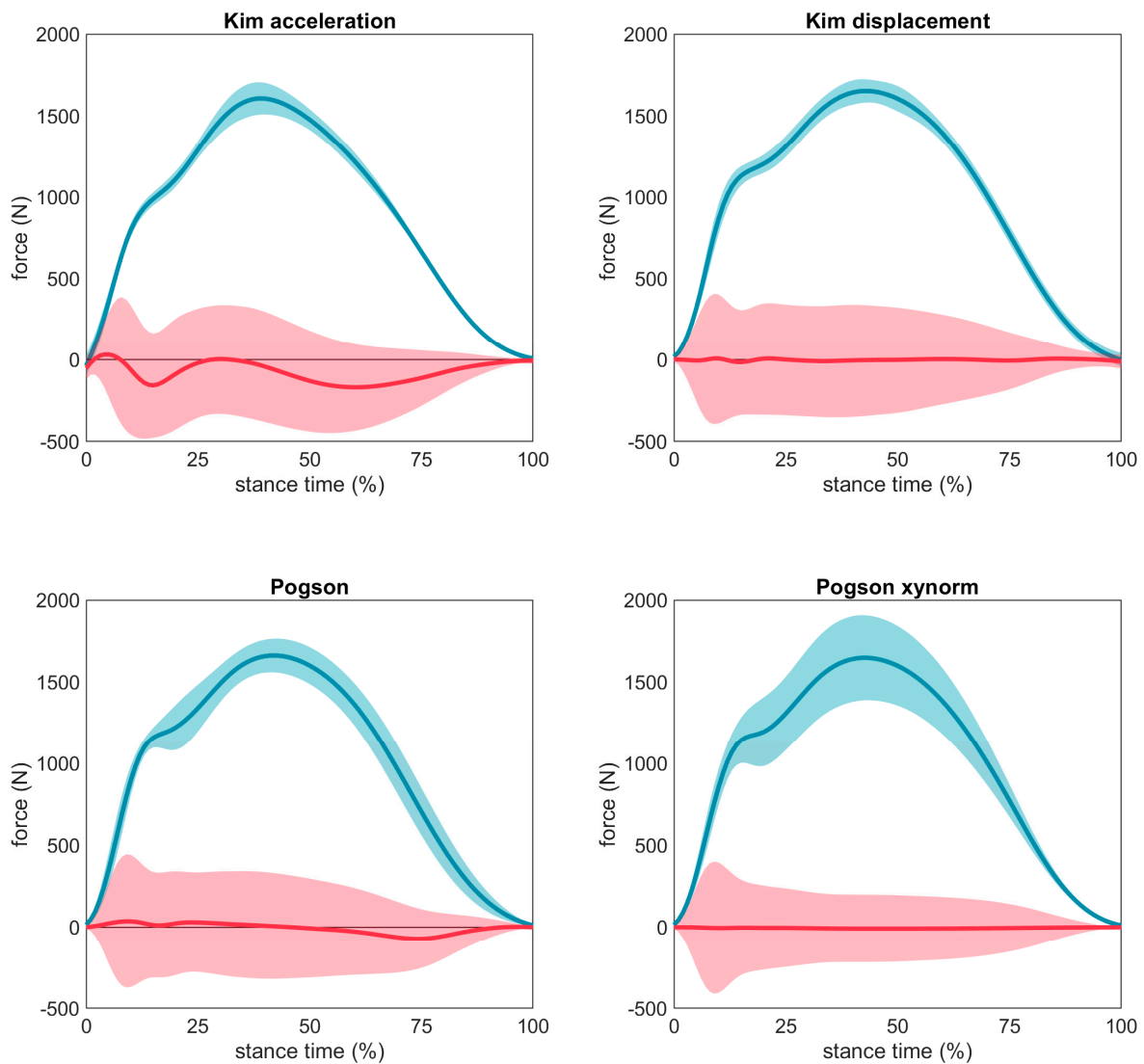


Figure 15. Mean time series estimated by each method (dark blue line) ± 1 SD (light blue shading) and the error between the gold standard time series (dark red line) ± 1 SD (light red shading). A red line at 0 indicates perfect agreement with the force plate, values above 0 indicate an overestimation of force at that time point, values below 0 indicate an underestimation of force at that time point.

4. Discussion

Performance was evaluated for 27 methods of estimating vertical GRF during running from a single wearable accelerometer on the shank or approximate COM. For each method, forces were estimated from 74 runners across two different surfaces (wood floor, running track), three self-selected speeds (slowest, typical, fastest), and a range of foot strike angles (including fore-, mid-, and rear-foot strike patterns). Errors were quantified as the difference between the estimated and ground truth forces.

Based on the observed errors, we recommend the ‘Pogson’ or ‘Pogson xynorm’ methods for several reasons: First, these methods use a single accelerometer on the sacrum to

estimate bilateral forces. This is advantageous over shank and hip methods that either (a) do not allow for the estimation of bilateral forces, (b) require an assumption of bilateral symmetry, or (c) require two accelerometers. Second, in contrast to most other methods, these methods can estimate every feature of the vertical GRF investigated here (first peak, loading rate, second peak, average, and time series). Third, these methods had relatively stable performance across speeds, foot strike angles, and running surfaces. Fourth, these methods were consistently high performers (had low biases, RCs, and LOAs) for the second peak, average, and time series estimation. Potential users should, however, balance their own design needs when choosing a method. For example, if estimating the second peak under known speed and foot strike conditions, other methods may have similar accuracy but better reliability and precision (e.g., the 'Neugebauer', 'Kim', or 'Kiernan' methods).

For first peak and loading rate estimation, the 'Pogson' methods were outperformed by other methods (e.g., 'Higgins', 'Kiernan', or 'Veras'). However, this does not affect our overall recommendation due to the high LOAs observed for the first peak and loading rate estimation: Even the best performing methods had LOAs exceeding ± 67.60 and $\pm 93.19\%$ of first peak and loading rate target magnitudes. These LOAs are likely larger than any potential between-group effects or within-participant changes, suggesting that first peak and loading rate cannot be estimated with sufficient precision with any of the methods investigated here. Given these results, we do not currently recommend the estimation of first peak or loading rate from accelerometers.

Despite the poor results for first peak and loading rate estimation, the observed biases for all estimated vertical GRF features were at or below those originally reported for nine of the 13 publications from which methods were derived [48,54,63,73,75–79]. Some of the error we did observe was attributable to speed, surface, and foot strike angle. Thus, one approach to decrease error may be to include these explanatory variables as model inputs. For example, Alcantara et al. [16] added speed, slope of the running surface, and foot strike pattern to their force prediction model and reported RMSEs of 106.78 N (or 6.4%) for time series estimation. These results are an improvement over the methods recommended here (although direct comparison is difficult as Alcantara et al. included the prediction of zero forces during swing in their RMSE calculations, which may have reduced their errors relative to our analysis of stance phase only when forces are non-zero) (see also: [56,68,79]). Thus, including speed, foot strike angle, and surface may improve the performance of future methods, provided that these variables can be quantified precisely and accurately in the field (e.g., [97–99]).

The inclusion of other explanatory variables may also improve performance. Thirteen of the 27 methods investigated here estimated force using linear regressions that included anthropometrics (mass, height, and/or leg length), sex, and/or age as explanatory variables [40,48,63,73,77–79]. Although these methods did not receive our final recommendation, many had very reasonable results. These results are particularly salient in contrast to the poor performance of methods that estimated force by simply multiplying acceleration by mass without additional explanatory variables [54,55,75,80]. This performance difference suggests that including explanatory variables improved the performance and may be warranted in future models.

Reductions in error could also be achieved by fitting participant-specific models. For example, Kiernan et al. [79] reported that including a random effect of participants reduced the error in their model by ~40% (see also: [40,63,78]). Thus, participant-specific models likely offer more accuracy, reliability, and precision than participant-general models and should be used when time and resources allow. Participant-specific models were not examined here to ensure that the methods studied were broadly applicable and accessible. This design choice maximizes their in-field utility and allows them to be applied to novel participants without the necessity of taking gold-standard measurements in-lab and using computational resources to develop a model for each participant.

Conversely, the choice to use acceleration data that were time synchronized to target force data with millisecond accuracy stands in contrast to the goal of applying these

methods in-field. This choice was made to ensure that errors in accelerometer-based stance identification did not affect our results and lead to erroneous conclusions. When taking measures outside the lab, however, the use of time synchronized force plate data is not available. Currently, even the best methods to identify stance have errors of -30.4 ± 118.8 and -2.8 ± 149.9 ms (bias \pm LOA) for initial and terminal contact, respectively [15]. These errors may interfere with accurate segmentation of acceleration data during stance and thus, until more exact acceleration-based stance identification is possible, acceleration signals will vary in duration relative to their target force signals. It is likely that the regression methods that used peak acceleration values to estimate discrete force variables are more robust to these discrepancies in duration [40,48,63,73,77–79]. The peaks used by these methods tend to be greater than the acceleration values immediately pre- or proceeding the initial and terminal contact and tend to be ~mid-stance, so are unlikely to be removed accidentally (see Supplement SB). In contrast, methods attempting to estimate continuous force time series are likely vulnerable to errors in input data duration.

To explore this, errors for the recommended ‘Pogson xynorm’ method were recalculated using acceleration input data that were stance-segmented based on acceleration signal features instead of a force plate threshold (using the ‘Auvinet’ stance identification method [100] as implemented by Kiernan et al. [15]) In contrast to the expectation that errors would increase, they were comparable to those observed when segmenting based on the time synchronized force signal (first peak: -104.75 ± 876.71 N; loading rate: -4.71 ± 53.31 kN/s; second peak: -5.03 ± 683.64 N; average: -5.83 ± 341.02 N; time series: 178.25 ± 207.58 N;). Model performance may have been maintained due to providing a more stereotyped input (i.e., acceleration data segmented based on acceleration features) and/or due to providing a larger set of training data (since millisecond accuracy was not required, all 4440 trials were used vs. the 642 exactly synchronized trials available for the other methods). In any case, the ‘Pogson_Auvinet’ method’s performance demonstrates the promise of current methods to estimate vertical GRF second peak, average, and time series in the field.

Before applying these force estimation methods in the field, potential users should consider the conditions and participants used to develop and validate these methods. It should not be assumed that these methods will work under other conditions or for other participants. For example, only over-ground running on two level surfaces was quantified here, so it should not be assumed that results will hold for incline/decline running, treadmill running, or running on other surfaces (e.g., sand, grass/turf, asphalt, concrete). That said, consistent with previous findings that changes in surface do not affect vertical GRF [101], results demonstrated that surface rarely explained error, suggesting that the estimated forces were robust to changes in surface. Potential users should also consider that the current sample represents a relatively homogenous group of runners (Figure 1). Thus, if studying participants drawn from different populations, these results may not be representative, and the included code/models may not produce estimations with the accuracy, reliability, and precision reported here.

Careful consideration should also be given to any differences in acceleration processing and/or coordinate conventions as any differences in acceleration inputs could affect force outputs. For example, the ‘Wundersitz’, ‘Meyer’, ‘Gurchiek’, and ‘Day’ methods [54,55,75,80] all used the same general approach of multiplying acceleration by mass to estimate force. Despite this common approach, results differed across these methods due to differences in acceleration processing. Expressing accelerations in different coordinate systems will also change the input and affect the output. All but two of the publications the methods were derived from used a WCS (Table 1). These coordinate systems assume alignment with segments or the inertial vector and may be particularly prone to altering acceleration inputs. For example, an accelerometer placed on the sacrum could deviate from its assumed inertial alignment due to lumbosacral curvature and adiposity or a participant leaning forward during running [102,103]. Any discrepancies in the placement of an accelerometer could also change the data. More consistent data may be obtained with

SCS and TCCS. Thus, all analyses in this paper are presented in the SCS. Although not included here, analyses were repeated in the WCS and TCCS. In contrast to the *a priori* expectation that SCS and TCCS would outperform the WCS, a systematic effect of coordinate system was only found in methods that multiplied acceleration by mass with no other coefficients [54,55,75,80]. When unique model coefficients, weights, and/or biases were calculated for each coordinate system, there were no systematic differences between them (Supplement SC). This result should, however, be interpreted with caution: each of the IMUs in this study was placed by the same experimenter, their positions were monitored throughout data collection, and any movement of the IMU led to elimination of a participant ($n = 2$). Thus, the WCS in this study is likely more consistent than under field conditions, where wearables may be placed across many repeated data collections by individuals with little training, leading to misalignment and inconsistency. Thus, we still caution against the use of a WCS.

5. Conclusions and Practical Applications

We recommend the ‘Pogson’ methods to estimate vertical ground reaction force second peak, average, and time series. We do not currently recommend the estimation of first peak or loading rate due to the large observed limits of agreement for these variables. For each method, code to automatically process stance-segmented accelerometer data is available at https://github.com/DovinKiernan/MTFBWY_running_vGRF_from_a, accessed on 12 September 2023. This code should be applied with careful consideration of the sample it was developed and validated on and the data processing applied to the acceleration inputs used to train the models. Future research should investigate whether the inclusion of anthropometrics, sex, age, field measures of speed and foot strike angle, or other explanatory variables can improve model performance. The results reported here should be used as a benchmark for the performance of future models and details on accuracy, reliability, and precision should be reported.

Supplementary Materials: The following supporting information can be downloaded at: <https://www.mdpi.com/article/10.3390/s23218719/s1>. References [104–109] are cited exclusively in Supplementary Materials.

Author Contributions: Conceptualization, D.K., B.N. and D.A.H.; Methodology, D.K. and B.N.; Software, D.K. and B.N.; Formal analysis, D.K.; Resources, D.A.H.; Data curation, D.K.; Writing—original draft, D.K.; Writing—review and editing, B.N. and D.A.H.; Visualization, D.K.; Supervision, D.A.H.; Project administration, D.A.H.; Funding acquisition, D.K. and B.N. All authors have read and agreed to the published version of the manuscript.

Funding: This research was funded in part by the American College of Sports Medicine Foundation Doctoral Student Research Grant (18-00671) and the Sigma Xi Scientific Research Honor Society Grant-in-Aid of Research (G2018031595024439). The APC was funded by the University of California Davis Library’s Open Access Fund. DK was supported by a scholarship from the Natural Sciences and Engineering Research Council of Canada (CGSD3-502358-2017), the Maury L Hull Endowed Fellowship for Musculoskeletal Biomechanics Research, and a University of California Davis Professors for the Future Fellowship.

Institutional Review Board Statement: The study was conducted according to the guidelines of the Declaration of Helsinki and approved by the Institutional Review Board of the University of California, Davis (protocol code 1280504-3 approved 23 September 2019).

Informed Consent Statement: Informed consent was obtained from all subjects involved in the study.

Data Availability Statement: Data are not publicly available due to stipulations in the IRB protocol, however, all software has been made publicly available at https://github.com/DovinKiernan/MTFBWY_running_vGRF_from_a accessed on 12 September 2023.

Conflicts of Interest: The authors declare no conflict of interest. No sponsor had any role in the design, execution, interpretation, or writing of the study.

References

1. Nigg, B.M.; Liu, W. The effect of muscle stiffness and damping on simulated impact force peaks during running. *J. Biomech.* **1999**, *32*, 849–856. [\[CrossRef\]](#)
2. Bredeweg, S.W.; Kluitenberg, B.; Bessem, B.; Buist, I. Differences in kinetic variables between injured and noninjured novice runners: A prospective cohort study. *J. Sci. Med. Sport* **2013**, *16*, 205–210.
3. Crossley, K.; Bennell, K.L.; Wrigley, T.; Oakes, B.W. Ground reaction forces, bone characteristics, and tibial stress fracture in male runners. *Med. Sci. Sport. Exerc.* **1999**, *31*, 1088–1093. [\[CrossRef\]](#)
4. van der Worp, H.; Vrielink, J.W.; Bredeweg, S.W. Do runners who suffer injuries have higher vertical ground reaction forces than those who remain injury free? A systematic review and meta-analysis. *Br. J. Sports Med.* **2016**, *50*, 450–457.
5. Zadpoor, A.A.; Nikooyan, A.A.; Kottner, J.; Black, J.; Call, E.; Gefen, A.; Santamaria, N. The relationship between lower extremity stress fractures and the ground reaction force: A systematic review. *Clin. Biomech.* **2011**, *26*, 23–28.
6. Malisoux, L.; Gette, P.; Delattre, N.; Urhausen, A.; Theisen, D. Spatiotemporal and Ground-Reaction Force Characteristics as Risk Factors for Running-Related Injury: A Secondary Analysis of a Randomized Trial Including 800+ Recreational Runners. *Am. J. Sports Med.* **2022**, *50*, 537–544. [\[CrossRef\]](#) [\[PubMed\]](#)
7. Kiernan, D.; Hawkins, D.A.; Manoukian, M.A.; McKallip, M.; Oelsner, L.; Caskey, C.F.; Coolbaugh, C.L. Accelerometer-based prediction of running injury in National Collegiate Athletic Association track athletes. *J. Biomech.* **2018**, *73*, 201–209. [\[CrossRef\]](#) [\[PubMed\]](#)
8. Ceysens, L.; Vanelderden, R.; Barton, C.; Malliaras, P.; Dingenen, B. Biomechanical Risk Factors Associated with Running-Related Injuries: A Systematic Review. *Sports Med.* **2019**, *49*, 1095–1115. [\[CrossRef\]](#) [\[PubMed\]](#)
9. Pohl, M.B.; Hamill, J.; Davis, I.S. Biomechanical and anatomic factors associated with a history of plantar fasciitis in female runners. *Clin. J. Sport Med.* **2009**, *19*, 372–376. [\[PubMed\]](#)
10. Kuhman, D.J.; Paquette, M.R.; Peel, S.A.; Melcher, D.A. Comparison of ankle kinematics and ground reaction forces between prospectively injured and uninjured collegiate cross country runners. *Hum. Mov. Sci.* **2016**, *47*, 9–15. [\[CrossRef\]](#)
11. Nagahara, R.; Mizutani, M.; Matsuo, A.; Kanehisa, H.; Fukunaga, T. Association of Sprint Performance With Ground Reaction Forces During Acceleration and Maximal Speed Phases in a Single Sprint. *J. Appl. Biomech.* **2016**, *34*, 104–110. [\[CrossRef\]](#)
12. Morin, J.-B.; Slawinski, J.; Dorel, S.; de Villarreal, E.S.; Couturier, A.; Samozino, P.; Brughelli, M.; Rabita, G. Acceleration capability in elite sprinters and ground impulse: Push more, brake less? *J. Biomech.* **2015**, *48*, 3149–3154. [\[CrossRef\]](#)
13. GRabita, G.; Dorel, S.; Slawinski, J.; Sáez-De-Villarreal, E.; Couturier, A.; Samozino, P.; Morin, J.-B. Sprint mechanics in world-class athletes: A new insight into the limits of human locomotion. *Scand. J. Med. Sci. Sports* **2015**, *25*, 583–594. [\[CrossRef\]](#) [\[PubMed\]](#)
14. Dos'Santos, T.; Thomas, C.; Jones, P.A.; Comfort, P. Mechanical Determinants of Faster Change of Direction Speed Performance in Male Athletes. *J. Strength Cond. Res.* **2017**, *31*, 696–705. [\[CrossRef\]](#) [\[PubMed\]](#)
15. Kiernan, D.; Dunn Siino, K.; Hawkins, D.A. Unsupervised Gait Event Identification with a Single Wearable Accelerometer and/or Gyroscope: A Comparison of Methods across Running Speeds, Surfaces, and Foot Strike Patterns. *Sensors* **2023**, *23*, 5022. [\[CrossRef\]](#)
16. Alcantara, R.S.; Edwards, W.B.; Millet, G.Y.; Grabowski, A.M. Predicting continuous ground reaction forces from accelerometers during uphill and downhill running: A recurrent neural network solution. *PeerJ* **2022**, *10*, e12752. [\[CrossRef\]](#)
17. Voloshina, A.S.; Ferris, D.P. Biomechanics and energetics of running on uneven terrain. *J. Exp. Biol.* **2015**, *218*, 711–719.
18. Kipp, S.; Taboga, P.; Kram, R. Ground reaction forces during steeplechase hurdling and waterjumps. *Sports Biomech.* **2017**, *16*, 152–165. [\[CrossRef\]](#)
19. Whiting, C.S.; Allen, S.P.; Brill, J.W.; Kram, R. Steep (30°) uphill walking vs. running: COM movements, stride kinematics, and leg muscle excitations. *Eur. J. Appl. Physiol.* **2020**, *120*, 2147–2157. [\[CrossRef\]](#)
20. Johnson, C.D.; Outerleys, J.; Jamison, S.T.; Tenforde, A.S.; Ruder, M.; Davis, I.S. Comparison of Tibial Shock during Treadmill and Teal-World Running. *Med. Sci. Sport. Exerc.* **2020**, *52*, 1557–1562.
21. Davis, B.L.; Perry, J.E.; Neth, D.C.; Waters, K.C. A Device for Simultaneous Measurement of Pressure and Shear Force Distribution on the Plantar Surface of the Foot. *J. Appl. Biomech.* **1998**, *14*, 93–104. [\[CrossRef\]](#)
22. Razian, M.A.; Pepper, M.G. Design, development, and characteristics of an in-shoe triaxial pressure measurement transducer utilizing a single element of piezoelectric copolymer film. *IEEE Trans. Neural Syst. Rehabil. Eng.* **2003**, *11*, 288–293. [\[CrossRef\]](#)
23. Koch, M.; Lunde, L.-K.; Ernst, M.; Knardahl, S.; Veiersted, K.B. Validity and reliability of pressure-measurement insoles for vertical ground reaction force assessment in field situations. *Appl. Ergon.* **2016**, *53*, 44–51. [\[CrossRef\]](#)
24. Price, C.; Parker, D.; Nester, C. Validity and repeatability of three in-shoe pressure measurement systems. *Gait Posture* **2016**, *46*, 69–74. [\[CrossRef\]](#)
25. Cordero, A.F.; Koopman, H.; van der Helm, F. Use of pressure insoles to calculate the complete ground reaction forces. *J. Biomech.* **2004**, *37*, 1427–1432. [\[CrossRef\]](#) [\[PubMed\]](#)
26. Burns, G.T.; Zandler, J.D.; Zernicke, R.F. Wireless insoles to measure ground reaction forces: Step-by-step validity in hopping, walking, and running. *ISBS Proc. Arch.* **2017**, *35*, 255.
27. Liu, T.; Inoue, Y.; Shibata, K.; Shiojima, K.; Han, M.M. Triaxial joint moment estimation using a wearable three-dimensional gait analysis system. *Measurement* **2014**, *47*, 125–129. [\[CrossRef\]](#)
28. Fong, D.T.-P.; Chan, Y.-Y.; Hong, Y.; Yung, P.S.-H.; Fung, K.-Y.; Chan, K.-M. Estimating the complete ground reaction forces with pressure insoles in walking. *J. Biomech.* **2008**, *41*, 2597–2601. [\[CrossRef\]](#) [\[PubMed\]](#)

29. Jung, Y.; Jung, M.; Lee, K.; Koo, S. Ground reaction force estimation using an insole-type pressure mat and joint kinematics during walking. *J. Biomech.* **2014**, *47*, 2693–2699. [[CrossRef](#)]
30. Faber, G.S.; Kingma, I.; Schepers, H.M.; Veltink, P.H.; van Dieën, J.H. Determination of joint moments with instrumented force shoes in a variety of tasks. *J. Biomech.* **2010**, *43*, 2848–2854. [[CrossRef](#)] [[PubMed](#)]
31. Liedtke, C.; Fokkenrood, S.A.; Menger, J.T.; van der Kooij, H.; Veltink, P.H. Evaluation of instrumented shoes for ambulatory assessment of ground reaction forces. *Gait Posture* **2007**, *26*, 39–47.
32. Liu, T.; Inoue, Y.; Shibata, K. A wearable ground reaction force sensor system and its application to the measurement of extrinsic gait variability. *Sensors* **2010**, *10*, 10240–10255. [[CrossRef](#)] [[PubMed](#)]
33. Guo, Y.; Storm, F.; Zhao, Y.; Billings, S.A.; Pavic, A.; Mazzà, C.; Guo, L.-Z. A New Proxy Measurement Algorithm with Application to the Estimation of Vertical Ground Reaction Forces Using Wearable Sensors. *Sensors* **2017**, *17*, 2181. [[CrossRef](#)] [[PubMed](#)]
34. Lim, H.; Kim, B.; Park, S. Prediction of Lower Limb Kinetics and Kinematics during Walking by a Single IMU on the Lower Back Using Machine Learning. *Sensors* **2020**, *20*, 130. [[CrossRef](#)] [[PubMed](#)]
35. Leporace, G.; Batista, L.A.; Nadal, J. Prediction of 3D ground reaction forces during gait based on accelerometer. *Res. Biomed. Eng.* **2018**, *34*, 211–216.
36. Karatsidis, A.; Schepers, M. Estimation of Ground Reaction Forces and Moments During Gait Using Only Inertial Motion Capture. *Sensors* **2016**, *17*, 75. [[CrossRef](#)]
37. Wouda, F.J.; Giuberti, M.; Bellusci, G.; Maartens, E.; Reenalda, J.; van Beijnum, B.-J.F.; Veltink, P.H. Estimation of vertical ground reaction forces and sagittal knee kinematics during running using three inertial sensors. *Front. Physiol.* **2018**, *9*, 218. [[CrossRef](#)] [[PubMed](#)]
38. Dorschky, E.; Nitschke, M.; Martindale, C.F.; Bogert, A.J.v.D.; Koelewijn, A.D.; Eskofier, B.M. CNN-Based Estimation of Sagittal Plane Walking and Running Biomechanics From Measured and Simulated Inertial Sensor Data. *Front. Bioeng. Biotechnol.* **2020**, *8*, 604.
39. Johnson, W.R.; Mian, A.; Robinson, M.A.; Verheul, J.; Lloyd, D.G.; Alderson, J.A. Multidimensional Ground Reaction Forces and Moments From Wearable Sensor Accelerations via Deep Learning. *IEEE Trans. Biomed. Eng.* **2021**, *68*, 289–297. [[CrossRef](#)] [[PubMed](#)]
40. Higgins, S.; Higgins, L.Q.; Vallabhajosula, S. Site-specific Concurrent Validity of the ActiGraph GT9X Link in the Estimation of Activity-related Skeletal Loading. *Med. Sci. Sports Exerc.* **2021**, *53*, 951–959. [[CrossRef](#)]
41. Stiles, V.H.; Griew, P.J.; Rowlands, A.V. Use of Accelerometry to Classify Activity Beneficial to Bone in Premenopausal Women. *Med. Sci. Sports Exerc.* **2013**, *45*, 2353–2361. [[CrossRef](#)]
42. Denoth, J. Load on the locomotor system and modeling. In *Biomechanics of Running Shoes*; Human Kinetics: Champaign, IL, USA, 1986; pp. 78–84.
43. Hennig, E.M.; Lafortune, M.A. Relationships between Ground Reaction Force and Tibial Bone Acceleration Parameters. *Int. J. Sport Biomech.* **1991**, *7*, 303–309. [[CrossRef](#)]
44. Hennig, E.M.; Milani, T.L.; Lafortune, M.A. Use of Ground Reaction Force Parameters in Predicting Peak Tibial Accelerations in Running. *J. Appl. Biomech.* **1993**, *9*, 306–314. [[CrossRef](#)] [[PubMed](#)]
45. Greenhalgh, A.; Sinclair, J.; Protheroe, L.; Chockalingam, N. Predicting Impact Shock Magnitude: Which Ground Reaction Force Variable Should We Use? *Int. J. Sport. Sci. Eng.* **2012**, *6*, 225–231.
46. Zhang, J.H.; An, W.W.; Au, I.P.; Chen, T.L.; Cheung, R.T. Comparison of the correlations between impact loading rates and peak accelerations measured at two different body sites: Intra- and inter-subject analysis. *Gait Posture* **2016**, *46*, 53–56. [[CrossRef](#)]
47. Berghe, P.V.D.; Six, J.; Gerlo, J.; Leman, M.; De Clercq, D. Validity and reliability of peak tibial accelerations as real-time measure of impact loading during over-ground rearfoot running at different speeds. *J. Biomech.* **2019**, *86*, 238–242. [[CrossRef](#)] [[PubMed](#)]
48. Thiel, D.V.; Shepherd, J.; Espinosa, H.G.; Kenny, M.; Fischer, K.; Worsey, M.; Matsuo, A.; Wada, T. Predicting Ground Reaction Forces in Sprint Running Using a Shank Mounted Inertial Measurement Unit. *Proceedings* **2018**, *2*, 199.
49. Tenforde, A.S.; Hayano, T.; Jamison, S.T.; Outerleys, J.; Davis, I.S. Outerleys and I. Davis. Tibial Acceleration Measured from Wearable Sensors Is Associated with Loading Rates in Injured Runners. *PMR* **2020**, *12*, 679–684. [[CrossRef](#)] [[PubMed](#)]
50. Raper, D.P.; Witchalls, J.; Philips, E.J.; Knight, E.; Drew, M.K.; Waddington, G. Use of a tibial accelerometer to measure ground reaction force in running: A reliability and validity comparison with force plates. *J. Sci. Med. Sport* **2017**, *21*, 84–88. [[CrossRef](#)]
51. Bobbert, M.F.; Schamhardt, H.C.; Nigg, B.M. Calculation of vertical ground reaction force estimates during running from positional data. *J. Biomech.* **1991**, *24*, 1095–1105. [[CrossRef](#)]
52. Rowlands, A.; Stiles, V. Accelerometer counts and raw acceleration output in relation to mechanical loading. *J. Biomech.* **2012**, *45*, 448–454. [[CrossRef](#)] [[PubMed](#)]
53. Cavagna, G.A.; Komarek, L.; Mazzoleni, S. The mechanics of sprint running. *J. Physiol.* **1971**, *217*, 709–721. [[CrossRef](#)]
54. Wundersitz, D.W.T.; Netto, K.J.; Aisbett, B.; Gastin, P.B. Validity of an upper-body-mounted accelerometer to measure peak vertical and resultant force during running and change-of-direction tasks. *Sports Biomech.* **2013**, *12*, 403–412. [[CrossRef](#)] [[PubMed](#)]
55. Gurchiek, R.D.; McGinnis, R.S.; Needle, A.R.; McBride, J.M.; van Werkhoven, H. The use of a single inertial sensor to estimate 3-dimensional ground reaction force during accelerative running tasks. *J. Biomech.* **2017**, *61*, 263–268. [[CrossRef](#)] [[PubMed](#)]
56. Alcantara, R.S.; Day, E.M.; Hahn, M.E.; Grabowski, A.M. Sacral acceleration can predict whole-body kinetics and stride kinematics across running speeds. *PeerJ* **2021**, *9*, e11199. [[CrossRef](#)] [[PubMed](#)]

57. Napier, C.; Jiang, X.; MacLean, C.L.; Menon, C.; Hunt, M.A. The use of a single sacral marker method to approximate the centre of mass trajectory during treadmill running. *J. Biomech.* **2020**, *108*, 109886. [[CrossRef](#)]
58. Gard, S.A.; Miff, S.C.; Kuo, A.D. Comparison of kinematic and kinetic methods for computing the vertical motion of the body center of mass during walking. *Hum. Mov. Sci.* **2004**, *22*, 597–610. [[CrossRef](#)] [[PubMed](#)]
59. Gullstrand, L.; Halvorsen, K.; Tinmark, F.; Eriksson, M.; Nilsson, J. Measurements of vertical displacement in running, a methodological comparison. *Gait Posture* **2009**, *30*, 71–75. [[CrossRef](#)]
60. Ranavolo, A.; Don, R.; Cacchio, A.; Serrao, M.; Paoloni, M.; Mangone, M.; Santilli, V. Comparison between Kinematic and Kinetic Methods for Computing the Vertical Displacement of the Center of Mass during Human Hopping at Different Frequencies. *J. Appl. Biomech.* **2008**, *24*, 271–279. [[CrossRef](#)]
61. Whittle, M.W. Three-dimensional motion of the center of gravity of the body during walking. *Hum. Mov. Sci.* **1997**, *16*, 347–355. [[CrossRef](#)]
62. Ancillao, A.; Tedesco, S.; Barton, J.; O’flynn, B. Indirect Measurement of Ground Reaction Forces and Moments by Means of Wearable Inertial Sensors: A Systematic Review. *Sensors* **2018**, *18*, 2564. [[CrossRef](#)]
63. Veras, L.; Diniz-Sousa, F.; Boppre, G.; Resende-Coelho, A.; Moutinho-Ribeiro, E.; Devezas, V.; Santos-Sousa, H.; Preto, J.; Vilas-Boas, J.P.; Machado, L.; et al. Mechanical loading prediction through accelerometry data during walking and running. *Eur. J. Sport Sci.* **2022**, *23*, 1518–1527. [[CrossRef](#)] [[PubMed](#)]
64. Bach, M.M.; Dominici, N.; Daffertshofer, A. Predicting vertical ground reaction forces from 3D accelerometry using reservoir computers leads to accurate gait event detection. *Front. Sport. Act. Living* **2022**, *4*, 1037438. [[CrossRef](#)]
65. Janz, K.F.; Rao, S.; Baumann, H.J.; Schultz, J.L. Measuring Children’s Vertical Ground Reaction Forces with Accelerometry during Walking, Running, and Jumping: The Iowa Bone Development Study. *Pediatr. Exerc. Sci.* **2003**, *15*, 34–43. [[CrossRef](#)]
66. Garcia, A.W.; Langenthal, C.R.; Angulo-Barroso, R.M.; Gross, M.M. A Comparison of Accelerometers for Predicting Energy Expenditure and Vertical Ground Reaction Force in School-Age Children. *Meas. Phys. Educ. Exerc. Sci.* **2004**, *8*, 119–144. [[CrossRef](#)]
67. Nedergaard, N.J.; Verheul, J.; Drust, B.; Etchells, T.; Lisboa, P.; Robinson, M.A.; Vanrenterghem, J. The feasibility of predicting ground reaction forces during running from a trunk accelerometry driven mass-spring-damper model. *PeerJ* **2018**, *6*, e6105. [[CrossRef](#)]
68. Derie, R.; Robberechts, P.; Berghe, P.V.D.; Gerlo, J.; De Clercq, D.; Segers, V.; Davis, J. Tibial Acceleration-Based Prediction of Maximal Vertical Loading Rate During Overground Running: A Machine Learning Approach. *Front. Bioeng. Biotechnol.* **2020**, *8*, 33. [[CrossRef](#)] [[PubMed](#)]
69. Sharma, D.; Davidson, P.; Müller, P.; Piché, R. Indirect Estimation of Vertical Ground Reaction Force from a Body-Mounted INS/GPS Using Machine Learning. *Sensors* **2021**, *21*, 1553. [[CrossRef](#)]
70. Ngoh, K.J.H.; Gouwanda, D.; Gopalai, A.A.; Chong, Y.Z. Estimation of vertical ground reaction force during running using neural network model and uniaxial accelerometer. *J. Biomech.* **2018**, *76*, 269–273. [[CrossRef](#)] [[PubMed](#)]
71. Donahue, S.R.; Hahn, M.E. Estimation of gait events and kinetic waveforms with wearable sensors and machine learning when running in an unconstrained environment. *Sci. Rep.* **2023**, *13*, 2339. [[CrossRef](#)] [[PubMed](#)]
72. Davidson, P.; Virekunnas, H.; Sharma, D.; Piché, R.; Cronin, N. Continuous Analysis of Running Mechanics by Means of an Integrated INS/GPS Device. *Sensors* **2019**, *19*, 1480. [[CrossRef](#)] [[PubMed](#)]
73. Neugebauer, J.M.; Hawkins, D.A.; Beckett, L. Estimating youth locomotion ground reaction forces using an accelerometer-based activity monitor. *PLoS ONE* **2012**, *7*, e48182. [[CrossRef](#)]
74. Neugebauer, J.M.; Collins, K.H.; Hawkins, D.A. Ground reaction force estimates from ActiGraph GT3X+ hip accelerations. *PLoS ONE* **2014**, *9*, e99023. [[CrossRef](#)] [[PubMed](#)]
75. Charry, E.; Hu, W.; Umer, M.; Ronchi, A.; Taylor, S. Study on Estimation of Peak Ground Reaction Forces using Tibial Accelerations in Running. In Proceedings of the IEEE 8th International Conference on Intelligent Sensors, Sensor Networks and Information Processing, Melbourne, Australia, 2–5 April 2013.
76. Meyer, U.; Ernst, D.; Schott, S.; Riera, C.; Hattendorf, J.; Romkes, J.; Granacher, U.; Göpfert, B.; Kriemler, S. Validation of two accelerometers to determine mechanical loading of physical activities in children. *J. Sports Sci.* **2015**, *33*, 1702–1709. [[CrossRef](#)] [[PubMed](#)]
77. Kiernan, D.; Hawkins, D. May the force be with you: Acceleration-based estimates of vertical ground reaction forces during running. *Med. Sci. Sports Exerc.* **2020**, *52*, 216. [[CrossRef](#)]
78. Kim, B.; Park, S. *Estimation of 3D GRF during Running from a Single Sacral Measurement Using Artificial Neural Network*; Dynamic Walking; Hawley, PA, USA, 2020.
79. Pogson, M.; Verheul, J.; Robinson, M.A.; Vanrenterghem, J.; Lisboa, P. A neural network method to predict task- and step-specific ground reaction force magnitudes from trunk accelerations during running activities. *Med. Eng. Phys.* **2020**, *78*, 82–89. [[CrossRef](#)]
80. Day, E.M.; Alcantara, R.S.; McGeehan, M.A.; Grabowski, A.M.; Hahn, M.E. Low-pass filter cutoff frequency affects sacral-mounted inertial measurement unit estimations of peak vertical ground reaction force and contact time during treadmill running. *J. Biomech.* **2021**, *119*, 110323. [[CrossRef](#)]
81. Coolbaugh, C.L.; Hawkins, D.A. Standardizing accelerometer-based activity monitor calibration and output reporting. *J. Appl. Biomech.* **2014**, *30*, 594–597. [[CrossRef](#)]
82. Wu, G.; Cavanagh, P.R. ISB recommendations for standardization in the reporting of kinematic data. *J. Biomech.* **1995**, *28*, 1257–1261. [[CrossRef](#)]

83. Altman, A.R.; Davis, I.S. Prospective comparison of running injuries between shod and barefoot runners. *Br. J. Sports Med.* **2016**, *50*, 476–480. [[CrossRef](#)]
84. Madgwick, S.O.H.; Harrison, A.J.L.; Vaidyanathan, R. Estimation of IMU and MARG orientation using a gradient descent algorithm. In Proceedings of the IEEE International Conference on Rehabilitation Robotics, Zurich, Switzerland, 29 June–1 July 2011.
85. Madgwick, S. *An Efficient Orientation Filter for Inertial and Inertial/Magnetic Sensor Arrays*; x-io: Bristol, UK, 2010.
86. Ludwig, S.; Burnham, K. Comparison of Euler Estimate using Extended Kalman Filter, Madgwick and Mahony on Quadcopter Flight Data. In Proceedings of the International Conference on Unmanned Aircraft Systems, Dallas, TX, USA, 12–15 June 2018.
87. Ludwig, S.A.; Burnham, K.D.; Jiménez, A.R.; Touma, P.A. Comparison of attitude and heading reference systems using foot mounted MIMU sensor data: Basic, Madgwick, and Mahony. In *Sensors and Smart Structures Technologies for Civil, Mechanical, and Aerospace Systems 2018*; SPIE: Bellingham, WA, USA, 2018.
88. McGinnis, R.S.; Perkins, N.C. A Highly Miniaturized, Wireless Inertial Measurement Unit for Characterizing the Dynamics of Pitched Baseballs and Softballs. *Sensors* **2012**, *12*, 11933–11945. [[CrossRef](#)]
89. Cain, S.M.; McGinnis, R.S.; Davidson, S.P.; Vitali, R.V.; Perkins, N.C.; McLean, S.G. Quantifying performance and effects of load carriage during a challenging balancing task using an array of wireless inertial sensors. *Gait Posture* **2016**, *43*, 65–69. [[CrossRef](#)]
90. Cain, S.M. IMUs (Inertial Measurement Units): Unboxing the black box. In Proceedings of the 41st Annual Meeting of the American Society of Biomechanics, Boulder, CO, USA, 8–11 August 2017.
91. Blackmore, T.; Willy, R.W.; Creaby, M.W. The high frequency component of the vertical ground reaction force is a valid surrogate measure of the impact peak. *J. Biomech.* **2016**, *49*, 479–483. [[CrossRef](#)] [[PubMed](#)]
92. Milner, C.E.; Ferber, R.; Pollard, C.D.; Hamill, J.; Davis, I.S. Biomechanical factors associated with tibial stress fracture in female runners. *Med. Sci. Sports Exerc.* **2006**, *38*, 323–328. [[CrossRef](#)] [[PubMed](#)]
93. Bland, J.; Altman, D. Measuring agreement in method comparison studies. *Stat. Methods Med. Res.* **1999**, *8*, 135–160. [[CrossRef](#)] [[PubMed](#)]
94. Carstensen, B.; Simpson, J.; Gurrin, L.C. Statistical Models for Assessing Agreement in Method Comparison Studies with Replicate Measurements. *Int. J. Biostat.* **2008**, *4*, 16. [[CrossRef](#)]
95. Carstensen, B. Replicate Measurements. In *Comparing Clinical Measurement Methods: A Practical Guide*; John Wiley & Sons. Ltd: Hoboken, NJ, USA, 2010; pp. 49–65.
96. Carstensen, B.; Gurrin, L.; Ekstrom, C.; Figurski, M.; Package ‘MethComp’. 12 October 2022. Available online: <https://cran.r-project.org/web/packages/MethComp/MethComp.pdf> (accessed on 23 August 2023).
97. Falbriard, M.; Soltani, A.; Aminian, K. Running Speed Estimation Using Shoe-Worn Inertial Sensors: Direct Integration, Linear, and Personalized Model. *Front. Sport. Act. Living* **2021**, *3*, 585809. [[CrossRef](#)] [[PubMed](#)]
98. Yang, S.; Mohr, C.; Li, Q. Ambulatory running speed estimation using an inertial sensor. *Gait Posture* **2011**, *34*, 462–466. [[CrossRef](#)]
99. Shiang, T.-Y.; Hsieh, T.-Y.; Lee, Y.-S.; Wu, C.-C.; Yu, M.-C.; Mei, C.-H.; Tai, I.-H. Determine the Foot Strike Pattern Using Inertial Sensors. *J. Sensors* **2016**, *2016*, 4759626. [[CrossRef](#)]
100. Auvinet, B.; Gloria, E.; Renault, G.; Barrey, E. Runner’s stride analysis: Comparison of kinematic and kinetic analyses under field conditions. *Sci. Sports* **2002**, *17*, 92–94. [[CrossRef](#)]
101. Miltko, A.; Milner, C.E.; Powell, D.W.; Paquette, M.R. The influence of surface and speed on biomechanical external loads obtained from wearable devices in rearfoot strike runners. *Sports Biomech.* **2022**, *10*, 1–15. [[CrossRef](#)]
102. Norasteh, A.; Hajihosseini, E.; Emami, S.; Mahmoudi, H. Assessing Thoracic and Lumbar Spinal Curvature Norm: A Systematic Review. *Phys. Treat. Specif. Phys. Ther. J.* **2019**, *9*, 183–192. [[CrossRef](#)]
103. Keller, T.S.; Weisberger, A.M.; Ray, J.L.; Hasan, S.S.; Shiavi, R.G.; Spengler, D.M. Relationship between vertical ground reaction force and speed during walking, slow jogging, and running. *Clin. Biomech.* **1996**, *11*, 253–259. [[CrossRef](#)] [[PubMed](#)]
104. United States Geological Survey. Gravity Anomaly Map of the Continental United States. Available online: <https://mrdata.usgs.gov/gravity/map-us.html#home> (accessed on 5 June 2019).
105. National Geodetic Survey. NGS Surface Gravity Prediction. National Oceanic and Atmospheric Administration. Available online: https://www.ngs.noaa.gov/cgi-bin/grav_pdx.prl (accessed on 5 June 2019).
106. Lafortune, M. Three-dimensional acceleration of the tibia during walking and running. *J. Biomech.* **1991**, *24*, 877–886. [[CrossRef](#)] [[PubMed](#)]
107. Kalman, R. A new approach to linear filtering and prediction problems. *Trans. ASME-J. Basic Eng.* **1960**, *82*, 35–45. [[CrossRef](#)]
108. Mahony, R.; Hamel, T.; Pflimlin, J. Nonlinear complementary filters on the special orthogonal group. *IEEE Trans. Autom. Control* **2008**, *53*, 1203–1218. [[CrossRef](#)]
109. Neugebauer, J.; Lafiandra, M. Predicting Ground Reaction Force from a Hip-Borne Accelerometer during Load Carriage. *Med. Sci. Sports Exerc.* **2018**, *50*, 2369–2374. [[CrossRef](#)] [[PubMed](#)]

Disclaimer/Publisher’s Note: The statements, opinions and data contained in all publications are solely those of the individual author(s) and contributor(s) and not of MDPI and/or the editor(s). MDPI and/or the editor(s) disclaim responsibility for any injury to people or property resulting from any ideas, methods, instructions or products referred to in the content.