

# UC Irvine

## UC Irvine Previously Published Works

### Title

Pharmacokinetic and pharmacodynamic properties of aerosolized (“vaped”) THC in adolescent male and female rats

### Permalink

<https://escholarship.org/uc/item/0z11c556>

### Journal

Psychopharmacology, 238(12)

### ISSN

0033-3158

### Authors

Ruiz, CM  
Torrens, A  
Lallai, V  
[et al.](#)

### Publication Date

2021-12-01

### DOI

10.1007/s00213-021-05976-8

Peer reviewed



Published in final edited form as:

*Psychopharmacology (Berl)*. 2021 December ; 238(12): 3595–3605. doi:10.1007/s00213-021-05976-8.

## Pharmacokinetic and Pharmacodynamic Properties of Aerosolized ('Vaped') THC in Adolescent Male and Female Rats

CM Ruiz<sup>1,\*</sup>, A Torrens<sup>2,\*</sup>, V Lallai<sup>1,\*</sup>, E Castillo<sup>1</sup>, L Manca<sup>1</sup>, MX Martinez<sup>1</sup>, DN Justeson<sup>1</sup>, CD Fowler<sup>1</sup>, D Piomelli<sup>2</sup>, SV Mahler<sup>1</sup>

<sup>1</sup>Department of Neurobiology & Behavior, University of California Irvine. 2205 McGaugh Hall, Irvine CA 92697

<sup>2</sup>Department of Anatomy & Neurobiology, University of California Irvine. 1244 Gillespie Hall, Irvine CA 92697

### Abstract

**Rationale:** Adolescent exposure to <sup>9</sup>-tetrahydrocannabinol (THC), the psychotropic constituent of cannabis, might affect brain development and in rodent models leads to long-term behavioral and physiological alterations. Yet the basic pharmacology of this drug in adolescent rodents, especially when ingested via ecologically relevant routes like aerosol inhalation, commonly referred to as 'vaping', is still poorly characterized. Moreover, sex differences exist in THC metabolism, kinetics and behavioral effects, but these have not been rigorously examined after vapor dosing in adolescents.

**Objectives:** We investigated the pharmacokinetics and pharmacodynamics of aerosolized THC (30 min inhalation exposure, 25 or 100 mg/ml) in adolescent Wistar rats of both sexes.

**Methods:** Liquid chromatography/mass spectrometry analysis of THC and its major metabolites was conducted on blood plasma and brain tissue at 5, 30, 60, and 120 min following a 30 min aerosol dosing session. Effects on activity in a novel environment for 120 min after aerosol, and temperature, were measured in separate rats.

**Results:** We found sex-dependent differences in the pharmacokinetics of THC and its active (11-OH-THC) and inactive (11-COOH-THC) metabolites in blood and brain, along with dose- and sex-dependent effects on anxiety-like and exploratory behaviors, namely greater 11-OH-THC levels accompanied by greater behavioral effects in females at the low dose, but similar hypothermic effects in both sexes at the high dose.

**Conclusions:** These results provide a benchmark for dosing adolescent rats with aerosolized (or 'vaped') THC, which could facilitate adoption by other labs of this potentially human-relevant THC exposure model to understand cannabis effects on the developing brain.

Corresponding Author: Stephen V Mahler, mahlers@uci.edu, (ph) 949-824-6128, (fx) 949-824-2447.

\*Denotes equal effort

#### CONFLICT OF INTEREST STATEMENT

The authors declare no conflicts of interest, nor any circumstances that could be perceived as a potential conflict of interest.

## Keywords

THC; vapor; e-cigarette; inhalation; pharmacokinetics; pharmacodynamics; anxiety; locomotion; blood; brain

---

## INTRODUCTION

Availability of legal cannabis has rapidly spread throughout North America. At the same time, stigma around cannabis use has declined, including in potentially vulnerable populations like adolescents and pregnant women (Bayrampour et al. 2019; Carliner et al. 2017). This is alarming, because human association studies suggest that early-age cannabis use is linked to negative outcomes later in life on cognition, memory, and emotional regulation (Chadwick et al. 2013; Rubino and Parolaro 2015a; Spear 2016; Volkow et al. 2014; Volkow et al. 2016). However, it is unclear whether early cannabis use causes later-life deficits, or rather if an underlying pathology leads to both early cannabis use and negative long-term outcomes.

Animal experiments are thus essential for addressing whether THC might affect the adolescent brain in a persistent manner. Supporting the epidemiological data, these experiments have shown that in adolescent rodents THC and other cannabinoid receptor agonists, especially when administered at high doses, do in fact produce persistent changes in cognition, emotion, and reward sensitivity, including to other drugs of abuse (Abela et al. 2019; Bruijnzeel et al. 2019; Chadwick et al. 2013; De Gregorio et al. 2020; Friedman et al. 2019; Gibula-Tarłowska et al. 2020; Gomes et al. 2015; Kruse et al. 2019; Lecca et al. 2020; Lecca et al. 2019; Miller et al. 2019; Nguyen et al. 2020; Orihuel et al. 2021; Pouliat et al. 2020; Renard et al. 2016; Rubino et al. 2012; Schneider 2008; Schoch et al. 2018; Stringfield and Torregrossa 2021). In addition, the persistent effects of THC frequently emerge differentially in male and female rodents (Cooper and Craft 2018; Craft et al. 2013; Dukes et al. 2020; Orihuel et al. 2021; Pouliat et al. 2020; Rubino and Parolaro 2011; 2015b; Silva et al. 2016; Stringfield and Torregrossa 2021). In part, this may be due to differences in the biotransformation of THC into its active (11-OH-THC) and inactive (11-COOH-THC) metabolites, with markedly greater persistence of both metabolites in female, relative to male adult (Tseng et al. 2004; Wiley and Burston 2014) and adolescent rats (Ruiz et al. 2021). Importantly, this sex difference in THC metabolism seems also to be present in humans (Nadulski et al. 2005). We therefore contend that such basic pharmacology studies, conducted in both sexes, will be critical for interpreting results of THC administration studies in adolescent rodents, and for selecting doses relevant to persons who use cannabis.

Animal models of adolescent THC use are only useful insofar as they realistically model the human condition. In addition to matching overall rodent dosing with THC blood levels achieved by humans after cannabis (Cooper and Haney 2009; Huestis et al. 1992), it is important to consider the role played by route of administration in THC pharmacology. In rodents, systemic intraperitoneal THC allows precise dosing and yields pharmacokinetic and metabolic profiles that largely, albeit incompletely, mimic those observed in human cannabis smokers (Torrens et al. 2020; Ruiz et al. 2021). However, humans consume legal cannabis

products through a variety of routes, including aerosol inhalation (also known as “vaping”) and ingestion, but little is known about how these different routes impact pharmacokinetic and pharmacodynamic properties of THC.

In the present study, we adapted previously published whole-body drug aerosol dosing models (Freels et al. 2020; Gilpin et al. 2008; Gilpin et al. 2014; Glodosky et al. 2020; Hamidullah et al. 2021; Hlozek et al. 2017; Kallupi and George 2017; Manwell and Mallet 2015; Nguyen et al. 2016; Nguyen et al. 2020; Nguyen et al. 2019; Smith et al. 2020; Taffe et al. 2014; Weimar et al. 2020) in adolescent male and female Wistar rats, in order to characterize THC aerosol inhalation dosing via blood and brain measurements of THC and its main metabolites over time, as well as effects on behavior and body temperature.

## MATERIALS AND METHODS

All procedures were approved by the University of California Irvine IACUC, and are in accord with the NIH guide for the Care and Use of Laboratory Animals.

### Subjects:

Male and female Wistar rats were purchased from Charles River, and arrived in our vivarium at postnatal day (PD) 25. Animals were group housed (4/cage) on a 12-hr reverse light/dark cycle (testing in the dark phase), with ad libitum food and water in the home cage.

### General Protocol:

At PD31 or PD32 (day was counterbalanced across testing conditions/ groups), rats received 30 min THC aerosol exposure (general protocol shown in Fig. 1). Rats used for pharmacokinetic analyses (n=40 male, n=40 female) were removed from the chambers ~3 min after the 30 min session and placed into their home cages. They were then anesthetized via inhalation of isoflurane at set time points, namely 5, 15, 60, 120 min. 2–3 ml of blood was collected from the heart and centrifuged for 10 min at  $500 \times g$ , and plasma was collected and then centrifuged again at  $2000 \times g$  for 10 min to remove any trace of residual cells, which was stored at  $-80^{\circ}\text{C}$  until analysis. Brains were rapidly removed, flash-frozen in methylbutane, and stored at  $-80^{\circ}\text{C}$  until analyses.

Rats used for pharmacodynamic experiments (n=30 male, n=33 female) were implanted on PD30 with an intraperitoneal temperature programmable microchip (UCT-2112,  $2.1 \times 13$  mm; Unified Information Devices, Lake Villa, Illinois), allowing abdominal body temperature measurement before and after vapor exposure. On test day, male and female rats differed slightly in weight, as expected ( $m \pm \text{SEM}$  grams; males =  $106.63 \pm 1.88$ ; females =  $88.33 \pm 1.01$ ). Following 30 min aerosol exposure, rats were immediately placed into  $43 \times 43 \times 30.5$  cm novel locomotor testing boxes, in a room with white lighting. Horizontal activity (distance travelled) was automatically tracked for 2 hrs via ceiling-mounted cameras and Ethovision behavioral tracking software (Vs15.0). Videos were also scored by an experimenter blind to treatment condition for vertical rearing behavior (number of rears onto the hind legs). Anxiety-like behavior was inferred by analysis of time spent in the center or surround of the chamber during the first 5 min of the session; the arena was divided into 36 equivalent squares ( $6 \times 6$ ; each  $51.37 \text{ cm}^2$ ): the 16 center squares were designated

as a “center zone” and the 20 squares around the edges were designated as the “surround zone.” Temperature was measured immediately before vapor exposure, and again after the 2 hr locomotor test (150 min after the start of vapor exposure).

#### **THC Preparation:**

THC in ethanol solvent was generously provided by the NIDA Drug Distribution Program. Ethanol was first evaporated under nitrogen, then dissolved in propylene glycol to dose (25 or 100 mg/ml) while heating to 37°C, and sonicating for 15 min. Vaporizer tanks (Smok TFV8 Baby) were filled with 3–4 ml of the THC solution immediately before testing.

#### **Aerosol Exposure Equipment:**

‘Vaping’ equipment was designed and manufactured by La Jolla Alcohol Research Inc (LJARI; San Diego, CA), and were controlled by MedPC hardware and software. LJARI aerosol generators were 4<sup>th</sup> generation, model 0004–100W, which rapidly heated the stainless steel coil in the tanks at 61.1W, 0.4Ω, to 232.2°C during the 5 sec puff deliveries. Chambers consisted of a 52.7 × 58.4 × 48.8 cm clear, air-tight acrylic box, capable of holding four 22.9 × 21.0 × 43.8 cm clear plastic tub cages with wire tops. Two ports delivered aerosol into the chamber at the upper and lower levels, and four outlet ports allowed a vacuum pump (1.42 psi air compressor) to pull air and aerosol out of the chamber at a steady rate of 1 L/min (achieved via a regulator and flow gauge), resulting in clearing of aerosol from the chamber approximately 3 min after completion of a puff. Exhaust was filtered through a Whatman HEPA-CAP filter and routed to a fume hood for safe clearance.

#### **Aerosol Exposure Procedure:**

For THC aerosol exposure, rats were placed in pairs (with a cage mate) into tub cages with bedding, on the lower shelf of the larger aerosol containment chambers. They then received aerosolized 25 mg/ml, or 100 mg/ml THC, dissolved in propylene glycol vehicle. Ten, 5 sec puffs were delivered during the 30 min session, one every 175 sec. Approximately 1 ml of each THC solution was aerosolized in the 30 min session using this procedure.

#### **LC/MS Analysis of Blood and Brain Levels of THC:**

**Chemicals and Solvents:** [<sup>2</sup>H<sub>3</sub>]-<sup>9</sup>-THC, [<sup>2</sup>H<sub>3</sub>]-11-OH-THC, and [<sup>2</sup>H<sub>3</sub>]-11-COOH-THC were purchased from Cerilliant (Round Rock, TX). All analytical solvents were of the highest grade, and were obtained from Honeywell (Muskegon, MI) or Sigma-Aldrich (Saint Louis, MO). Formic acid was from Thermo Fisher (Houston, TX).

**Sample Preparation:** Samples were prepared as previously described (Vozella et al. 2019, Ruiz et al. 2021), with minor modifications. Briefly, plasma (0.1 mL) was transferred into 8 mL glass vials (Thermo Fisher) and proteins were precipitated by addition of 0.5 mL ice-cold acetonitrile containing 1% formic acid and the following internal standards (ISTD): [<sup>2</sup>H<sub>3</sub>]-<sup>9</sup>-THC, [<sup>2</sup>H<sub>3</sub>]-11-OH-THC, and [<sup>2</sup>H<sub>3</sub>]-11-COOH-THC, 50 pmol each. Half-brains were homogenized in 7 mL ice-cold acetonitrile containing 1% formic acid. The homogenates (0.3 mL) were collected and spiked with 50 pmol ISTD. Plasma and brain samples were stirred vigorously for 30 sec and centrifuged at 2800×g at 4°C for 15

min. After centrifugation, the supernatants were loaded onto Captiva-Enhanced Matrix Removal (EMR)-Lipid cartridges (Agilent Technologies, Santa Clara, CA) and eluted under vacuum (3–5 mmHg). For brain fractionation, EMR cartridges were pre-washed with water/acetonitrile (1:4, v/v). No pretreatment was necessary for plasma fractionation. Tissue pellets were rinsed with water/acetonitrile (1:4, v/v; 0.2 mL), stirred for 30 sec, and centrifuged at  $2800\times g$  at 4°C for 15 min. The supernatants were collected, transferred onto EMR cartridges, eluted, and pooled with the first eluate. The cartridges were washed again with water/acetonitrile (1:4, v/v; 0.2 mL), and vacuum pressure was increased gradually to 10 mmHg to ensure maximal analyte recovery. Eluates were dried under  $N_2$  and reconstituted in 0.1 mL of methanol containing 0.1% formic acid. Samples were transferred to deactivated glass inserts (0.2 mL) placed inside amber glass vials (2 mL; Agilent Technologies).

**Liquid Chromatography/Mass Spectrometry (LC-MS/MS) Analyses:** LC separations were carried out using a 1200 series LC system (Agilent Technologies), consisting of a binary pump, degasser, temperature-controlled autosampler and column compartment coupled to a 6410B triple quadrupole mass spectrometric detector (MSD; Agilent Technologies) (Vozella et al. 2019). Analytes were separated on an Eclipse XDB C18 column (1.8  $\mu m$ , 3.0  $\times$  50.0 mm; Agilent Technologies). The mobile phase consisted of water containing 0.1% formic acid as solvent A and methanol containing 0.1% formic acid as solvent B. The flow rate was 1.0 mL/min. The gradient conditions were as follows: starting 75% B to 89% B in 3.0 min, changed to 95% B at 3.01 min, and maintained till 4.5 min to remove any strongly retained materials from the column. Equilibration time was 2.5 min. The column temperature was maintained at 40°C and the autosampler at 9°C. The total analysis time, including re-equilibrium, was 7 min. The injection volume was 5  $\mu L$ . To prevent carry over, the needle was washed in the autosampler port for 30 sec before each injection using a wash solution consisting of 10% acetone in water/methanol/isopropanol/acetonitrile (1:1:1:1, v/v). The MS was operated in the positive electrospray ionization (ESI) mode, and analytes were quantified by multiple reaction monitoring (MRM) of the following transitions:  $^9\text{-THC } 315.2 > 193.0 m/z$ ,  $[^2\text{H}_3]\text{-}^9\text{-THC } 318.2 > 196.1 m/z$ ,  $11\text{-OH-THC } 331.2 > 313.1 m/z$ ,  $[^2\text{H}_3]\text{-}11\text{-OH-THC } 334.2 > 316.1 m/z$ ,  $11\text{-COOH-THC } 345.2 > 299.2 m/z$ ,  $[^2\text{H}_3]\text{-}11\text{-COOH-THC } 348.2 > 302.2 m/z$ . In select experiments, we further verified the identity of  $^9\text{-THC}$  by monitoring the transition  $315.2 > 135.0 m/z$ . The capillary voltage was set at 3500 V. The source temperature was 300°C and gas flow was set at 12.0 L/min. Nebulizer pressure was set at 40 psi. Collision energy and fragmentation voltage were set for each analyte as reported (Vozella et al. 2019). The MassHunter software (Agilent Technologies) was used for instrument control, data acquisition, and data analysis.

**Statistical Analyses:** Sex-dependent differences in pharmacokinetic parameters ( $C_{\max}$  and area under the curve; AUC) were assessed using Student's unpaired *t*-tests. Behavioral data were analyzed with ANOVAs including THC Dose and Sex as between subjects variables, and time as a within subjects variable when relevant, or Student's unpaired *t*-tests. Oneway ANOVAs in each sex with Tukey post hoc tests were used to determine the nature of main effects and interactions.

## RESULTS

### Pharmacokinetic Profile of <sup>9</sup>-THC in Rat Plasma:

Fig. 2 shows the plasma pharmacokinetic profiles for THC and its two main first-pass metabolites, 11-OH-THC and 11-COOH-THC, in adolescent (PND 31 or 32) male and female rats after a 30 min aerosol exposure to 25 or 100 mg/mL THC. Table 1 reports the peak concentration values ( $C_{\max}$ ) in plasma, the time at which  $C_{\max}$  was attained ( $T_{\max}$ ), the half-life time ( $t_{1/2}$ ) of elimination for THC, and the total exposure (area under the curve, AUC) for each of the three analytes.

In male rats, THC reached a  $C_{\max}$  of 35 and 67 pmol/mL at 5 min for 25 and 100 mg/mL, respectively. The AUC for THC was 667 pmol/min/mL at 25 mg/mL and 1,653 pmol/min/mL at 100 mg/mL.  $C_{\max}$  values for 11-OH-THC were <LOD (5 pmol/mL) at 25 mg/mL and 6 pmol/mL (<LOQ, 20 pmol/mL) at 100 mg/mL. The AUC for 11-OH-THC at 100 mg/mL was 380 pmol/min/mL. For males, 11-COOH-THC values for both doses were below the LOD.

The plasma pharmacokinetic profile of THC was similar in adolescent female rats, compared to males (Fig. 2 and Table 1). At both 25 and 100 mg/mL, the  $C_{\max}$  values were comparable between the two sexes (Table 1). AUC values for THC were significantly higher or trended to be higher in females for males at both exposures (1329 vs 667 pmol/min/mL,  $t_8=2.497$ ;  $p=0.037$  at 25 mg/mL and 2,333 vs 1,653 pmol/min/mL,  $t_8=0.9581$ ;  $p=0.37$  at 100 mg/mL). Although not statistically robust, plasma concentrations for THC metabolites trended higher in female than male rats. For example, at 100 mg/mL, the  $C_{\max}$  for 11-OH-THC was 3 times higher (17 vs 6 pmol/mL,  $t_6=2.292$ ;  $p=0.06$ ) and the AUC was 2.3 times higher (862 vs 380 pmol/min/mL,  $t_8=1.425$ ; *n.s.*). 11-COOH-THC also reached greater  $C_{\max}$  and AUC at both exposures in females compared to males (Fig. 2C and F, Table 1).

### Pharmacokinetic Profile of <sup>9</sup>-THC in Rat Brain:

The pharmacokinetic profiles of THC and its metabolites in the brain of adolescent male and female rats are illustrated in Fig. 3. Key pharmacokinetic parameters are reported in Table 2. In male rats at 100 mg/mL the  $C_{\max}$  for <sup>9</sup>-THC was 170 pmol/g at 5 min, the AUC was 12,366 pmol/min/g, and the brain-to-plasma ratio was 2.6 (Tables 2 and 3). 11-OH-THC reached a  $C_{\max}$  value of 49 pmol/g at 15 min and the AUC was 3,222 pmol/min/g with a brain-to-plasma ratio of 7.5 (Tables 2 and 3). 11-COOH-THC was undetectable in the brain at both exposures and in both sexes.

In comparison, at 100 mg/mL, female rats exhibited slightly lower but not significantly different  $C_{\max}$  values for THC (152 vs 170 pmol/g;  $t_6=0.50$ ; *n.s.*). At 25 mg/mL  $C_{\max}$  values for <sup>9</sup>-THC were comparable between sexes (129 vs 125 pmol/g at 5 min). The AUC values for THC were also slightly but not significantly higher compared to males at 25 mg/mL and slightly but not significantly lower at 100 mg/mL (7,545 vs 6,834 pmol/min/mg  $t_8=0.41$  for 25 mg/mL, and 10,372 vs 12,366 pmol/min/mg  $t_8=0.54$  for 100 mg/mL;  $ps>0.5$ ). However,  $C_{\max}$  and AUC values for the active metabolite, 11-OH-THC, were significantly higher in females compared to males at both exposures (66 vs 36 pmol/g,  $t_6=3.64$ ,  $p=0.01$  and 5931 vs 2849 pmol/min/g,  $t_8=2.96$ ,  $p=0.02$  for 25 mg/mL; 90 vs 50 pmol/g,  $t_6=2.72$ ,  $p=0.035$

and 8282 vs 3222 pmol/min/g,  $t_8=2.78$ ,  $p=0.02$  for 100 mg/mL). Lastly, the brain-to-plasma ratios for THC and 11-OH-THC were similar in females and males for both exposures (Table 3).

### Pharmacodynamic Profile of THC:

**Body Temperature:** Prior to aerosol exposure, rats did not differ in body temperature (assigned THC dose:  $F_{2,57}=0.6$ ,  $p=0.55$ ; sex:  $F_{1,57}=3.27$ ,  $p=0.076$ ). THC lowered temperature in both sexes similarly but did so significantly only at the higher dose [Dose (0, 25, 100 mg/ml)  $\times$  Time (pre-vape, 120 min post-aerosol) ANOVA; main effect of Dose:  $F_{2,57}=4.18$ ,  $p=0.02$ ; Tukey post hoc on doses versus Veh: 25 mg/ml:  $p=0.09$ , 100 mg/ml:  $p=0.019$ ; no Dose  $\times$  Sex interaction:  $F_{2,57}=0.43$ ,  $p=0.65$ ; Fig 4A]. When change in temperature from pre-aerosol to 120 min post-aerosol measurement was examined, again a main effect of THC ( $F_{2,57}=4.55$ ,  $p=0.015$ ) was seen, without clear sex differences (no Sex  $\times$  Dose interaction:  $F_{2,57}=0.27$ ,  $p=0.76$ ; Fig 4B).

**Anxiety-Like Behavior:** THC suppressed the percentage of time spent in the exposed center of a novel environment during the first 5 min of the session (main effect of Dose:  $F_{2,57}=6.04$ ,  $p=0.004$ ; 25 mg/ml:  $p=0.01$ , 100 mg/ml:  $p=0.015$ ), implying a generally anxiogenic effect of aerosolized THC at both doses, with similar effects in both sexes (no main effect of Sex:  $F_{2,56}=1.84$ ,  $p=0.18$ ; nor a Dose  $\times$  Sex interaction;  $F_{2,57}=2.1$ ,  $p=0.13$ ; Fig 4C). This said, when percent center time data were examined separately in each sex, THC suppressed center time in females, but only at the low dose ( $F_{2,30}=4.16$ ,  $p=0.025$ ; 25 mg/ml:  $p=0.02$ ; 100 mg/ml:  $p=0.49$ ; Fig 4C). In contrast, only high dose THC significantly suppressed center time in males ( $F_{2,27}=3.75$ ,  $p=0.037$ ; 25 mg/ml:  $p=0.15$ ; 100 mg/ml:  $p=0.034$ ). In this first 5 min period, locomotion was also suppressed in males but not females (Sex  $\times$  Dose interaction:  $F_{2,56}=3.39$ ,  $p=0.04$ ; females:  $F_{2,30}=2.2$ ,  $p=0.13$ ; males:  $F_{2,27}=3.32$ ,  $p=0.05$ ), though post hoc comparisons in males showed that neither dose reached statistical significance (25 mg/ml:  $p=0.98$ ; 100 mg/ml:  $p=0.068$ ; Fig. 4D, top). Rearing in this initial 5 min period was suppressed by low, but not high dose THC aerosol (main effect of Dose:  $F_{2,56}=3.4$ ,  $p=0.04$ ; 25 mg/ml:  $p=0.039$ ; 100 mg/ml:  $p=0.16$ ), an effect that was similar in both sexes (no Sex  $\times$  Dose interaction:  $F_{2,56}=1.73$ ,  $p=0.19$ ; Fig. 4D, bottom).

**Locomotor Behavior and Rearing:** High dose (100 mg/ml) THC aerosol suppressed novel environment locomotion overall (main effect of Dose:  $F_{2,57}=4.76$ ,  $p=0.012$ ; 25 mg/ml:  $p=0.11$ ; 100 mg/ml:  $p=0.01$ ; Fig. 5A). However, these effects again differed by sex (Sex  $\times$  Dose interaction:  $F_{2,57}=3.47$ ,  $p=0.038$ ), in that only the low dose significantly suppressed locomotion in females ( $F_{2,30}=3.59$ ,  $p=0.04$ ; 25 mg/ml:  $p=0.036$ ; 100 mg/ml:  $p=0.18$ ), while only the high dose did so in males ( $F_{2,27}=5.65$ ,  $p=0.009$ ; 25 mg/ml:  $p=0.98$ ; 100 mg/ml:  $p=0.025$ ; Fig. 5A). This dose-dependent THC-induced locomotor suppression was consistent across the entire 2-hr locomotor testing period (no Dose  $\times$  Time interaction:  $F_{6,171}=1.01$ ,  $p=0.42$ ; Fig. 5B).

THC effects on vertical exploration (rearing) were similar to those on horizontal locomotion (Main effect of Dose:  $F_{2,57}=3.6$ ,  $p=0.03$ ; 25 mg/ml:  $p=0.11$ ; 100 mg/ml:  $p=0.035$ ), again



with stronger effects of the low dose in females, and the high dose in males (Sex  $\times$  Dose interaction:  $F_{2,57}=3.1$ ,  $p=0.05$ ; Dose main effect in females:  $F_{2,30}=3.32$ ,  $p=0.05$ ; 25 mg/ml:  $p=0.04$ ; 100 mg/ml:  $p=0.33$ ; Dose main effect in males:  $F_{2,27}=3.63$ ,  $p=0.04$ ; 25 mg/ml:  $p=1.0$ , 100 mg/ml:  $p=0.07$ ; Fig. 5C). This dose-dependent suppression of rearing was also consistent over the 2-hr session (no Dose  $\times$  Time interaction:  $F_{6,171}=1.27$ ,  $p=0.27$ ; Fig. 5D).

## DISCUSSION

The present results provide the first thorough characterization of the pharmacokinetics of aerosolized THC (commonly referred to as ‘vaping’) inhaled by adolescent male and female Wistar rats. As seen with i.p. administration (Ruiz et al. 2021; Torrens et al. 2020), females exhibited higher concentrations of the bioactive metabolite 11-OH THC in blood and brain than did males, which might explain why the same THC dose inhibits locomotion and induces anxiety-like avoidance of an open space at the lower 25 mg/ml concentration tested here in females, but not in males. In males, only the higher 100 mg/ml aerosol suppressed locomotion and produced anxiety-like behavior. At the higher concentration, THC also suppressed body temperature, and did so similarly in both sexes—showing that THC’s effects are not uniform, but instead depend on the outcome being measured as well as on sex and dosage. Together, these findings will serve as a benchmark for aerosol inhalation dosing in adolescent rats, facilitating well-characterized, translationally relevant future studies on the acute and persistent effects of THC on the developing adolescent brain.

The results presented here demonstrate that aerosol inhalation yields significant plasma concentrations of THC and THC metabolites in adolescent rats, comparable to those achieved by low dose i.p. administration of the drug [0.5 mg/kg; (Ruiz et al. 2021; Torrens et al. 2020)]. As expected, inhalation dosing led to a more rapid rise in THC blood than did i.p. dosing in prior work (Ruiz et al. 2021), with maximum plasma concentrations observed 5 min after the 30-min session in both sexes and at both doses. Also as expected, THC blood concentrations were higher after high-dose, relative to low-dose THC aerosol. No major sex differences were seen in THC blood levels, though females trended toward higher values at the low THC aerosol dose, as previously observed after low-concentration THC aerosol inhalation in adolescent rats (Nguyen et al. 2020). We note that experimenters desiring even higher THC blood levels [e.g. those more similar to a moderate 5 mg/kg i.p. THC dose; (Ruiz et al. 2021)] can likely achieve this by adjusting parameters such as the duration or frequency of delivered aerosol puffs, or by increasing the duration of the exposure period (Nguyen et al. 2016; Nguyen et al. 2020; Taffe et al. 2021).

In brain, THC concentrations were near-maximal 5 min after aerosol exposure in both sexes, and unlike in blood, brain levels of the drug remained at this high level for at least 30 min, indicating sequestration of the drug to the lipid-rich brain. Again, no sex differences were observed in brain THC levels. Of note, the  $T_{max}$  for THC in brain was faster (5 min *vs* 60 min) and the brain-to-plasma ratio for THC was higher (4.02 *vs* 2.02 for males; 3.10 *vs* 2.65 for females) after inhalation than after i.p. administration of a dose (0.5 mg/kg) that produced comparable plasma levels (Ruiz et al. 2021), suggesting that inhalation might afford greater access to the central nervous system than does i.p. injection.

As we and others have previously shown with i.p. THC dosing, there was a major sex difference in blood and brain concentrations of THC metabolites, with females having greater concentrations of bioactive, behaviorally-potent (Craft et al. 2017; Gill and Jones 1972; Tseng et al. 2004) 11-OH THC in blood and brain, and also of inactive 11-COOH THC in blood. Importantly, this sex difference in blood 11-OH-THC is also observed in humans ingesting THC via the oral route (Nadulski et al. 2005). A surprising result was that the  $C_{\max}$  of 11-OH-THC in the female brain exceeded the  $C_{\max}$  measured in blood, and it was achieved at a shorter  $T_{\max}$ . A plausible explanation for this finding, which will require further testing, is that THC may be metabolized in female rat brain tissue, as previously suggested (Watanabe et al. 1988). However, we cannot exclude the possibility that liver-generated 11-OH-THC might enter the CNS more readily than THC does.

Prior data from our labs and others support the notion that sex differences in THC metabolism, and especially the female-specific accumulation of the active THC metabolite 11-OH THC, may in part explain the drug's generally stronger behavioral effects in females relative to males (Craft et al. 2017; Ruiz et al. 2021; Tseng and Craft 2001; Tseng et al. 2004; Wiley and Burston 2014). The present data also supports this hypothesis, with pronounced effects of low-dose 25 mg/ml THC in females only on locomotion and anxiety-like behaviors. In males, only the higher 100 mg/ml THC dose suppressed locomotion and induced anxiety—potentially suggesting that a higher THC dose is necessary to achieve equivalent behavioral effects in males to those achieved by a considerably lower dose in females. However, high-dose THC aerosol decreased body temperature equivalently in both sexes, suggesting that not all THC effects are equally sensitive to interactions between dose and sex.

Finally, we point out that our studies were conducted in relatively small numbers of adolescent rats, and the pharmacokinetics of THC differs somewhat across rodent species, sexes, and ages (Craft et al. 2019; Rubino and Parolaro 2015b; Ruiz et al. 2021; Schneider 2008; Torrens et al. 2020; Tseng et al. 2004; Wiley et al. 2021). Fortunately, it seems that THC aerosol dosing is likely equivalent across rat strains, as Wistar and Sprague Dawley rats show similar blood THC levels after comparable aerosol dosing using a similar system to ours (Moore et al. 2021; Taffe et al. 2021). We also note that acute 'vaping' which often occurs in humans may also yield distinct effects from repeated inhalation over 30 min, as tested here in rats.

In conclusion, the present results provide benchmark validation data for the adolescent THC aerosol administration model in female and male adolescent rats. By providing a rigorous characterization of the pharmacokinetic and pharmacodynamic profiles of aerosolized THC, these findings will help to assess the translational relevance of this exposure model. In doing so, we expect that we will progress toward increasingly translationally relevant animal models of adolescent THC exposure.

## Acknowledgements:

We thank Maury Cole at La Jolla Alcohol Research, Inc for advice on vapor equipment design. These studies were funded by NIH P50 DA044118 and R01 DA051831, and State of California Tobacco-Related Disease Research Program grants T31IR1767, T29IR0618 and T30FT0967.

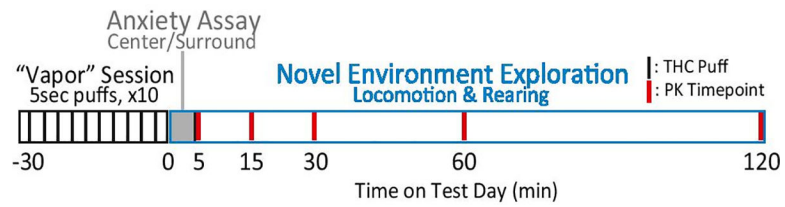
## REFERENCES

- Abela AR, Rahbarnia A, Wood S, Le AD, Fletcher PJ (2019) Adolescent exposure to Delta9-tetrahydrocannabinol delays acquisition of paired-associates learning in adulthood. *Psychopharmacology (Berl)* 236: 1875–1886. [PubMed: 30694374]
- Bayrampour H, Zahradnik M, Lisonkova S, Janssen P (2019) Women's perspectives about cannabis use during pregnancy and the postpartum period: An integrative review. *Prev Med* 119: 17–23. [PubMed: 30552948]
- Bruijnzeel AW, Knight P, Panunzio S, Xue S, Bruner MM, Wall SC, Pompilus M, Febo M, Setlow B (2019) Effects in rats of adolescent exposure to cannabis smoke or THC on emotional behavior and cognitive function in adulthood. *Psychopharmacology (Berl)* 236: 2773–2784. [PubMed: 31044291]
- Carliner H, Brown QL, Sarvet AL, Hasin DS (2017) Cannabis use, attitudes, and legal status in the U.S.: A review. *Prev Med* 104: 13–23. [PubMed: 28705601]
- Chadwick B, Miller ML, Hurd YL (2013) Cannabis Use during Adolescent Development: Susceptibility to Psychiatric Illness. *Front Psychiatry* 4: 129. [PubMed: 24133461]
- Cooper ZD, Craft RM (2018) Sex-Dependent Effects of Cannabis and Cannabinoids: A Translational Perspective. *Neuropsychopharmacology* 43: 34–51. [PubMed: 28811670]
- Cooper ZD, Haney M (2009) Comparison of subjective, pharmacokinetic, and physiological effects of marijuana smoked as joints and blunts. *Drug Alcohol Depend* 103: 107–13. [PubMed: 19443132]
- Craft RM, Britch SC, Buzitis NW, Clowers BH (2019) Age-related differences in Delta(9)-tetrahydrocannabinol-induced antinociception in female and male rats. *Exp Clin Psychopharmacol* 27: 338–347. [PubMed: 31120286]
- Craft RM, Haas AE, Wiley JL, Yu Z, Clowers BH (2017) Gonadal hormone modulation of (9)-tetrahydrocannabinol-induced antinociception and metabolism in female versus male rats. *Pharmacol Biochem Behav* 152: 36–43. [PubMed: 27670094]
- Craft RM, Marusich JA, Wiley JL (2013) Sex differences in cannabinoid pharmacology: a reflection of differences in the endocannabinoid system? *Life Sci* 92: 476–81. [PubMed: 22728714]
- De Gregorio D, Dean Conway J, Canul ML, Posa L, Bambico FR, Gobbi G (2020) Effects of chronic exposure to low doses of Delta9- tetrahydrocannabinol in adolescence and adulthood on serotonin/norepinephrine neurotransmission and emotional behaviors. *Int J Neuropsychopharmacol*.
- Dukes AJ, Fowler JP, Lallai V, Pushkin AN, Fowler CD (2020) Adolescent Cannabinoid and Nicotine Exposure Differentially Alters Adult Nicotine Self-Administration in Males and Females. *Nicotine Tob Res* 22: 1364–1373. [PubMed: 32396625]
- Freels TG, Baxter-Potter LN, Lugo JM, Glodosky NC, Wright HR, Baglot SL, Petrie GN, Yu Z, Clowers BH, Cuttler C, Fuchs RA, Hill MN, McLaughlin RJ (2020) Vaporized Cannabis Extracts Have Reinforcing Properties and Support Conditioned Drug-Seeking Behavior in Rats. *J Neurosci* 40: 1897–1908. [PubMed: 31953372]
- Friedman AL, Meurice C, Jutkiewicz EM (2019) Effects of adolescent Delta9-tetrahydrocannabinol exposure on the behavioral effects of cocaine in adult Sprague-Dawley rats. *Exp Clin Psychopharmacol* 27: 326–337. [PubMed: 30932503]
- Gibula-Tarlowska E, Wydra K, Kotlinska JH (2020) Deleterious Effects of Ethanol, Delta(9)-Tetrahydrocannabinol (THC), and Their Combination on the Spatial Memory and Cognitive Flexibility in Adolescent and Adult Male Rats in the Barnes Maze Task. *Pharmaceutics* 12.
- Gill EW, Jones G (1972) Brain levels of 1 -tetrahydrocannabinol and its metabolites in mice-- correlation with behaviour, and the effect of the metabolic inhibitors SKF 525A and piperonyl butoxide. *Biochem Pharmacol* 21: 2237–48. [PubMed: 4674983]
- Gilpin NW, Richardson HN, Cole M, Koob GF (2008) Vapor inhalation of alcohol in rats. *Curr Protoc Neurosci* Chapter 9: Unit 9 29.
- Gilpin NW, Whitaker AM, Baynes B, Abdel AY, Weil MT, George O (2014) Nicotine vapor inhalation escalates nicotine self-administration. *Addict Biol* 19: 587–92. [PubMed: 23240929]
- Glodosky NC, Cuttler C, Freels TG, Wright HR, Rojas MJ, Baglot SL, Hill MN, McLaughlin RJ (2020) Cannabis vapor self-administration elicits sex- and dose-specific alterations in stress reactivity in rats. *Neurobiol Stress* 13: 100260. [PubMed: 33344714]

- Gomes FV, Guimaraes FS, Grace AA (2015) Effects of pubertal cannabinoid administration on attentional set-shifting and dopaminergic hyper-responsivity in a developmental disruption model of schizophrenia. *Int J Neuropsychopharmacol* 18.
- Hamidullah S, Lutelmowski CD, Creighton SD, Luciani KR, Frie JA, Winters BD, Khokhar JY (2021) Effects of vapourized THC and voluntary alcohol drinking during adolescence on cognition, reward, and anxiety-like behaviours in rats. *Prog Neuropsychopharmacol Biol Psychiatry* 106: 110141. [PubMed: 33069816]
- Hlozek T, Uttl L, Kaderabek L, Balikova M, Lhotkova E, Horsley RR, Novakova P, Sichova K, Stefkova K, Tyls F, Kuchar M, Palenicek T (2017) Pharmacokinetic and behavioural profile of THC, CBD, and THC+CBD combination after pulmonary, oral, and subcutaneous administration in rats and confirmation of conversion in vivo of CBD to THC. *Eur Neuropsychopharmacol* 27: 1223–1237. [PubMed: 29129557]
- Huestis MA, Henningfield JE, Cone EJ (1992) Blood cannabinoids. I. Absorption of THC and formation of 11-OH-THC and THCCOOH during and after smoking marijuana. *J Anal Toxicol* 16: 276–82. [PubMed: 1338215]
- Kallupi M, George O (2017) Nicotine Vapor Method to Induce Nicotine Dependence in Rodents. *Curr Protoc Neurosci* 80: 8 41 1–8 41 10.
- Kruse LC, Cao JK, Viray K, Stella N, Clark JJ (2019) Voluntary oral consumption of Delta(9)-tetrahydrocannabinol by adolescent rats impairs reward-predictive cue behaviors in adulthood. *Neuropsychopharmacology* 44: 1406–1414. [PubMed: 30965351]
- Lecca D, Scifo A, Pisanu A, Valentini V, Piras G, Sil A, Cadoni C, Di Chiara G (2020) Adolescent cannabis exposure increases heroin reinforcement in rats genetically vulnerable to addiction. *Neuropharmacology* 166: 107974. [PubMed: 32007624]
- Lecca S, Luchicchi A, Scherma M, Fadda P, Muntoni AL, Pistis M (2019) Delta(9)-Tetrahydrocannabinol During Adolescence Attenuates Disruption of Dopamine Function Induced in Rats by Maternal Immune Activation. *Frontiers in behavioral neuroscience* 13: 202. [PubMed: 31551729]
- Manwell LA, Mallet PE (2015) Comparative effects of pulmonary and parenteral Delta(9)-tetrahydrocannabinol exposure on extinction of opiate-induced conditioned aversion in rats. *Psychopharmacology (Berl)* 232: 1655–65. [PubMed: 25395060]
- Miller ML, Chadwick B, Dickstein DL, Purushothaman I, Egervari G, Rahman T, Tessereau C, Hof PR, Roussos P, Shen L, Baxter MG, Hurd YL (2019) Adolescent exposure to Delta(9)-tetrahydrocannabinol alters the transcriptional trajectory and dendritic architecture of prefrontal pyramidal neurons. *Mol Psychiatry* 24: 588–600. [PubMed: 30283037]
- Moore CF, Davis CM, Harvey EL, Taffe MA, Weerts EM (2021) Appetitive, antinociceptive, and hypothermic effects of vaped and injected Delta-9-tetrahydrocannabinol (THC) in rats: exposure and dose-effect comparisons by strain and sex. *Pharmacol Biochem Behav* 202: 173116. [PubMed: 33493547]
- Nadulski T, Pragst F, Weinberg G, Roser P, Schnelle M, Fronk EM, Stadelmann AM (2005) Randomized, double-blind, placebo-controlled study about the effects of cannabidiol (CBD) on the pharmacokinetics of Delta9-tetrahydrocannabinol (THC) after oral application of THC verses standardized cannabis extract. *Ther Drug Monit* 27: 799–810. [PubMed: 16306858]
- Nguyen JD, Aarde SM, Vandewater SA, Grant Y, Stouffer DG, Parsons LH, Cole M, Taffe MA (2016) Inhaled delivery of Delta(9)-tetrahydrocannabinol (THC) to rats by e-cigarette vapor technology. *Neuropharmacology* 109: 112–20. [PubMed: 27256501]
- Nguyen JD, Creehan KM, Kerr TM, Taffe MA (2020) Lasting effects of repeated (9)-tetrahydrocannabinol vapour inhalation during adolescence in male and female rats. *Br J Pharmacol* 177: 188–203. [PubMed: 31478558]
- Nguyen JD, Grant Y, Creehan KM, Hwang CS, Vandewater SA, Janda KD, Cole M, Taffe MA (2019) Delta(9)-tetrahydrocannabinol attenuates oxycodone self-administration under extended access conditions. *Neuropharmacology* 151: 127–135. [PubMed: 30980837]
- Orihuel J, Gomez-Rubio L, Valverde C, Capellan R, Roura-Martinez D, Ucha M, Ambrosio E, Higuera-Matas A (2021) Cocaine-induced Fos expression in the rat brain: Modulation by prior Delta(9)-tetrahydrocannabinol exposure during adolescence and sex-specific effects. *Brain Res* 1764: 147480. [PubMed: 33861997]

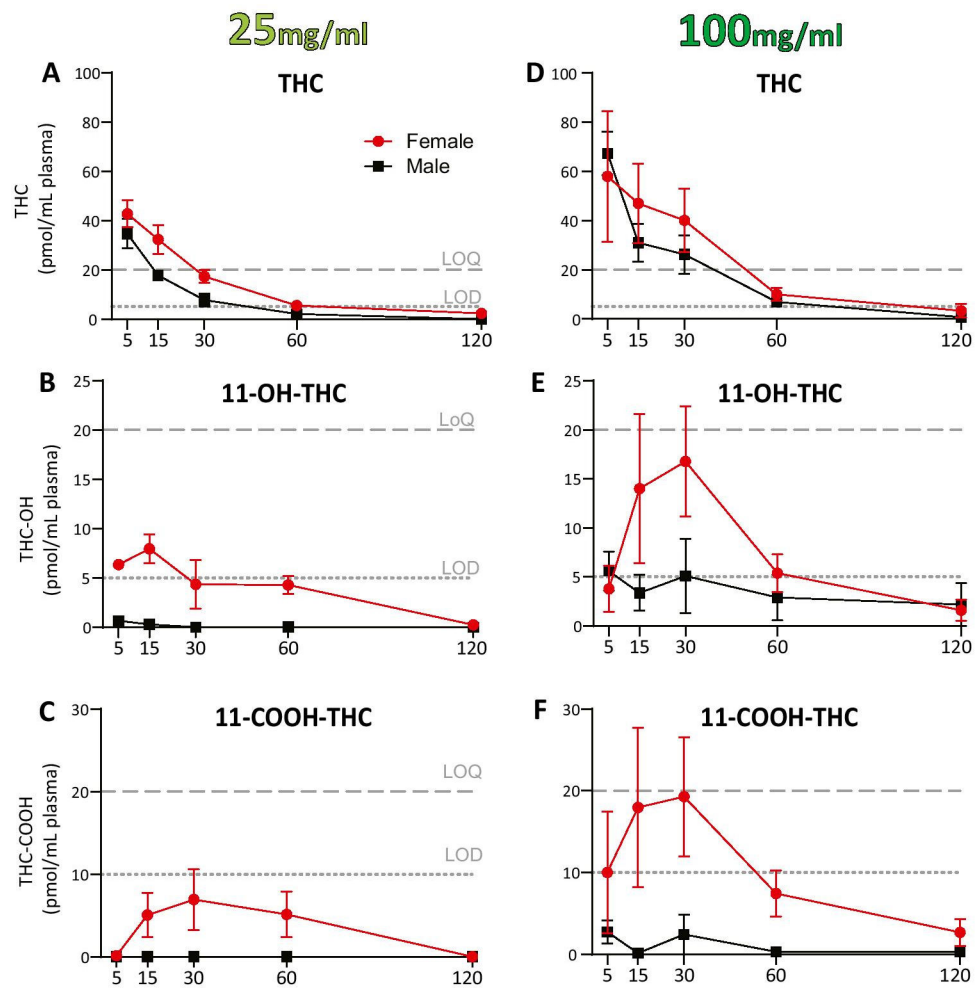
- Pouliat N, Delis F, Brakatselos C, Lekkas P, Kokras N, Dalla C, Antoniou K (2020) Escalating low-dose Delta(9)-tetrahydrocannabinol exposure during adolescence induces differential behavioral and neurochemical effects in male and female adult rats. *Eur J Neurosci* 52: 2681–2693. [PubMed: 31626712]
- Renard J, Rosen LG, Loureiro M, De Oliveira C, Schmid S, Rushlow WJ, Laviolette SR (2016) Adolescent Cannabinoid Exposure Induces a Persistent Sub-Cortical Hyper-Dopaminergic State and Associated Molecular Adaptations in the Prefrontal Cortex. *Cereb Cortex*.
- Rubino T, Parolaro D (2011) Sexually dimorphic effects of cannabinoid compounds on emotion and cognition. *Frontiers in behavioral neuroscience* 5: 64. [PubMed: 21991251]
- Rubino T, Parolaro D (2015a) The Impact of Exposure to Cannabinoids in Adolescence: Insights from Animal Models. *Biol Psychiatry*.
- Rubino T, Parolaro D (2015b) Sex-dependent vulnerability to cannabis abuse in adolescence. *Front Psychiatry* 6: 56. [PubMed: 25941498]
- Rubino T, Zamberletti E, Parolaro D (2012) Adolescent exposure to cannabis as a risk factor for psychiatric disorders. *J Psychopharmacol* 26: 177–88. [PubMed: 21768160]
- Ruiz CM, Torrens A, Castillo E, Perrone CR, Cevallos J, Inshishian VC, Harder EV, Justeson DN, Huestis MA, Swarup V, Piomelli D, Mahler SV (2021) Pharmacokinetic, behavioral, and brain activity effects of Delta(9)-tetrahydrocannabinol in adolescent male and female rats. *Neuropsychopharmacology* 46: 959–969. [PubMed: 32927465]
- Schneider M (2008) Puberty as a highly vulnerable developmental period for the consequences of cannabis exposure. *Addict Biol* 13: 253–63. [PubMed: 18482434]
- Schoch H, Huerta MY, Ruiz CM, Farrell MR, Jung KM, Huang JJ, Campbell RR, Piomelli D, Mahler SV (2018) Adolescent cannabinoid exposure effects on natural reward seeking and learning in rats. *Psychopharmacology (Berl)* 235: 121–134. [PubMed: 29022083]
- Silva L, Black R, Michaelides M, Hurd YL, Dow-Edwards D (2016) Sex and age specific effects of delta-9-tetrahydrocannabinol during the periadolescent period in the rat: The unique susceptibility of the prepubescent animal. *Neurotoxicol Teratol*.
- Smith LC, Kallupi M, Tieu L, Shankar K, Jaquish A, Barr J, Su Y, Velarde N, Sedighim S, Carrette LLG, Klodnicki M, Sun X, de Guglielmo G, George O (2020) Validation of a nicotine vapor self-administration model in rats with relevance to electronic cigarette use. *Neuropsychopharmacology* 45: 1909–1919. [PubMed: 32544927]
- Spear LP (2016) Consequences of adolescent use of alcohol and other drugs: Studies using rodent models. *Neurosci Biobehav Rev* 70: 228–243. [PubMed: 27484868]
- Stringfield SJ, Torregrossa MM (2021) Intravenous self-administration of delta-9-THC in adolescent rats produces long-lasting alterations in behavior and receptor protein expression. *Psychopharmacology (Berl)* 238: 305–319. [PubMed: 33111197]
- Taffe MA, Aarde SM, Cole M (2014) Development and validation of a device for the intrapulmonary delivery of cannabinoids and stimulants to rats Society for Neuroscience Annual Meeting, Chicago, IL
- Taffe MA, Creehan KM, Vandewater SA, Kerr TM, Cole M (2021) Effects of Delta(9)-tetrahydrocannabinol (THC) vapor inhalation in Sprague-Dawley and Wistar rats. *Exp Clin Psychopharmacol* 29: 1–13. [PubMed: 32297788]
- Torrens A, Vozella V, Huff H, McNeil B, Ahmed F, Ghidini A, Mahler SV, Huestis MA, Das A, Piomelli D (2020) Comparative Pharmacokinetics of Delta(9)-Tetrahydrocannabinol in Adolescent and Adult Male Mice. *J Pharmacol Exp Ther* 374: 151–160. [PubMed: 32345621]
- Tseng AH, Craft RM (2001) Sex differences in antinociceptive and motoric effects of cannabinoids. *Eur J Pharmacol* 430: 41–7. [PubMed: 11698061]
- Tseng AH, Harding JW, Craft RM (2004) Pharmacokinetic factors in sex differences in Delta 9-tetrahydrocannabinol-induced behavioral effects in rats. *Behav Brain Res* 154: 77–83. [PubMed: 15302113]
- Volkow ND, Baler RD, Compton WM, Weiss SR (2014) Adverse health effects of marijuana use. *N Engl J Med* 370: 2219–27. [PubMed: 24897085]

- Volkow ND, Swanson JM, Evins AE, DeLisi LE, Meier MH, Gonzalez R, Bloomfield MA, Curran HV, Baler R (2016) Effects of Cannabis Use on Human Behavior, Including Cognition, Motivation, and Psychosis: A Review. *JAMA Psychiatry* 73: 292–7. [PubMed: 26842658]
- Vozella V, Zibardi C, Ahmed F, Piomelli D (2019) Fast and Sensitive Quantification of Delta(9)-Tetrahydrocannabinol and Its Main Oxidative Metabolites by Liquid Chromatography/Tandem Mass Spectrometry. *Cannabis Cannabinoid Res* 4: 110–123. [PubMed: 31236476]
- Watanabe K, Tanaka T, Yamamoto I, Yoshimura H (1988) Brain microsomal oxidation of delta 8- and delta 9-tetrahydrocannabinol. *Biochem Biophys Res Commun* 157: 75–80. [PubMed: 2848522]
- Weimar HV, Wright HR, Warrick CR, Brown AM, Lugo JM, Freels TG, McLaughlin RJ (2020) Long-term effects of maternal cannabis vapor exposure on emotional reactivity, social behavior, and behavioral flexibility in offspring. *Neuropharmacology* 179: 108288. [PubMed: 32860776]
- Wiley JL, Barrus DG, Farquhar CE, Lefever TW, Gamage TF (2021) Sex, species and age: Effects of rodent demographics on the pharmacology of (9)-tetrahydrocannabinol. *Prog Neuropsychopharmacol Biol Psychiatry* 106: 110064. [PubMed: 32810571]
- Wiley JL, Burston JJ (2014) Sex differences in Delta(9)-tetrahydrocannabinol metabolism and in vivo pharmacology following acute and repeated dosing in adolescent rats. *Neurosci Lett* 576: 51–5. [PubMed: 24909619]



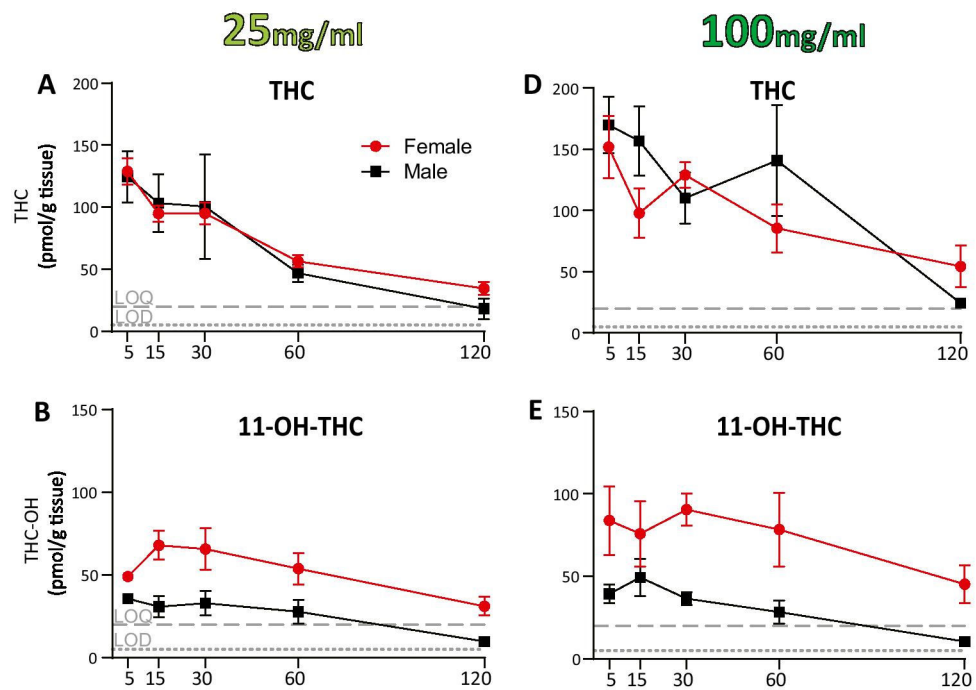
**Figure 1: Aerosol Apparatus and Experimental Timeline**

The experimental timeline is shown, with aerosol ('vapor') exposure in occurring over 30 min (ten 5-sec THC puffs at regular intervals). Rats used for pharmacokinetic (PK) experiments were killed at the timepoints indicated by red lines. Rats used for pharmacodynamic experiments were placed in a novel environment for 2 hrs following aerosol dosing; the first 5 min was analyzed for center/surround time, and locomotion/rearing was measured for the remainder of the 2 hr test.

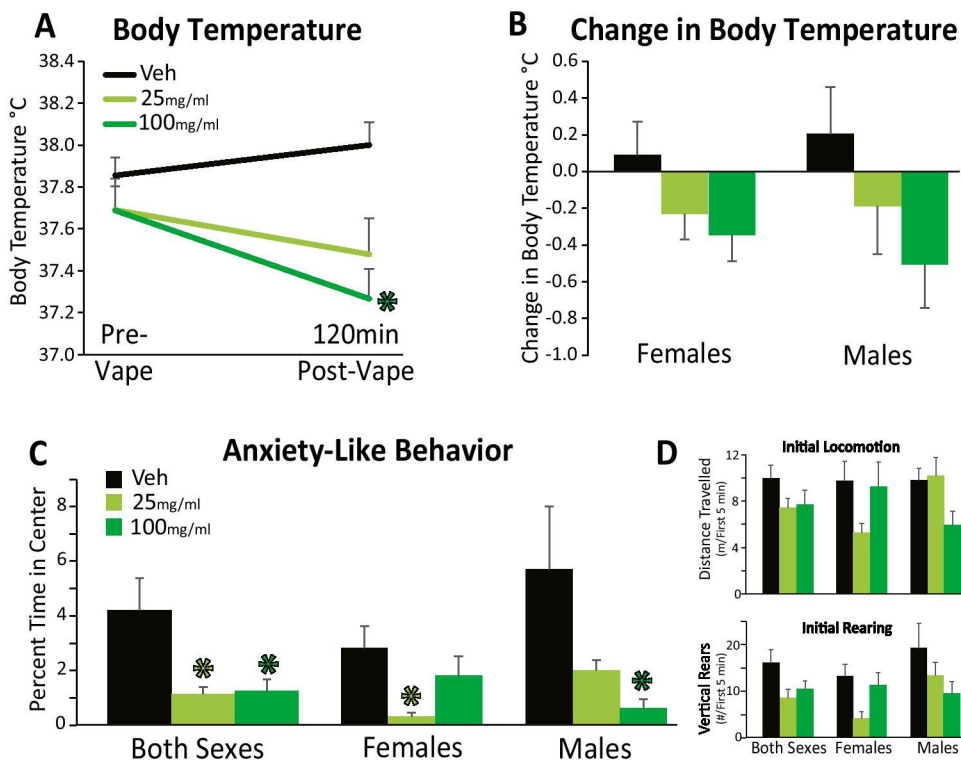


**Figure 2.** Plasma concentrations of  $^9$ -THC and its first-pass metabolites, 11-OH-THC and 11-COOH-THC, after 30 min ( $t = 0$ ) aerosol exposure of  $^9$ -THC. (A-C) show the lower, 25 mg/mL dose, (D-F) show the higher 100 mg/mL dose in male (black squares) or female (red circles) adolescent rats. Symbols represent the mean  $\pm$  SEM,  $n = 4-5$ . Dashed line represents limit of quantification (LOQ; 20 pmol/mL), dotted line represents limit of detection (LOD; 5 or 10 pmol/mL) for each analyte respectively.

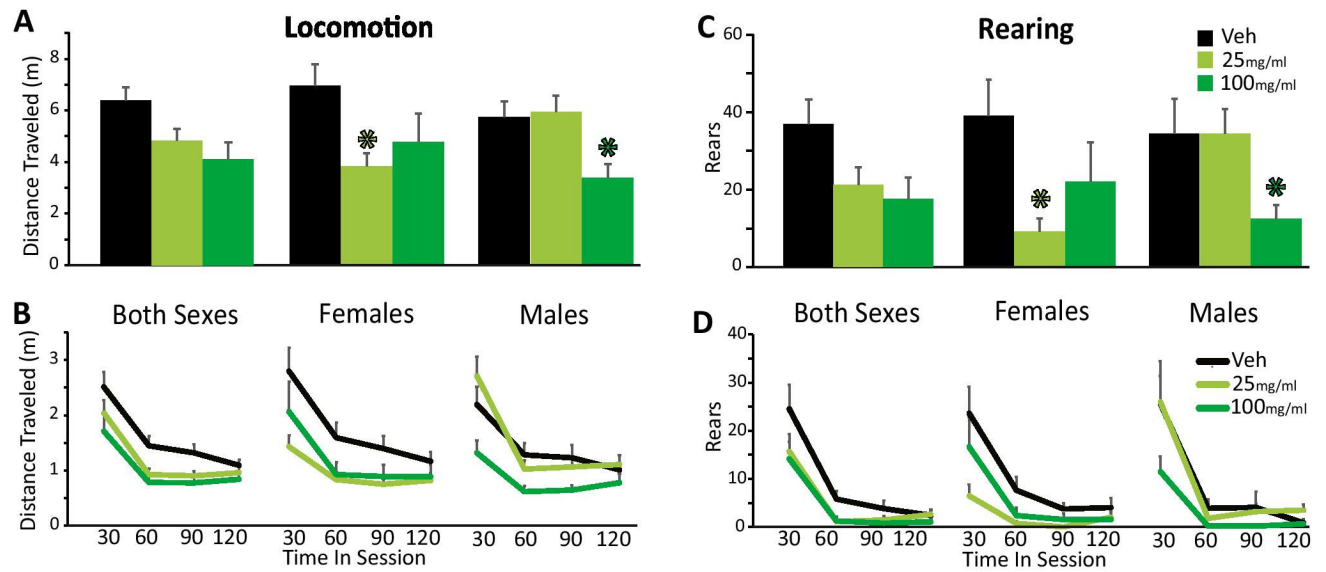




**Figure 3.** Brain concentrations of  $^9$ -THC and its active first-pass metabolite, 11-OH-THC, after 30 min ( $t = 0$ ) aerosol exposure of  $^9$ -THC. A) and B) show the lower, 25 mg/mL dose, B) and C) show the higher 100 mg/mL dose in male (black squares) or female (red circles) adolescents. Symbols represent the mean  $\pm$  SEM,  $n = 4-5$ . Dashed line represents LOQ (20 pmol/mL), dotted line represents LOD (5 pmol/mL) for each analyte respectively. At both exposure levels, 11-COOH-THC was undetectable in brain tissue.



**Figure 4: Aerosolized THC Reduces Temperature and Increases Anxiety-Like Behavior:**  
 A) Body temperature prior to aerosol exposure and after the 120min locomotor session held immediately after aerosol exposure is shown, with significant reductions present at the 100mg/ml (dark green) but not 25mg/ml dose. B) Change in body temperature from pre-aerosol to post locomotor testing is shown separately in females and males. No significant sex difference in THC vapor-induced hypothermia was observed. C) Percent time in the first 5min of exposure to a novel locomotor testing chamber spent in the exposed center of the chamber, an inverse assay of anxiety-like behavior is shown for both sexes, and each sex separately. D) Locomotor behavior (top) and rearing (bottom) during this initial 5 min period in which center-surround behavior was analyzed is depicted. \* $p < 0.05$  compared to vehicle.



**Figure 5: Aerosolized THC Suppresses Locomotion and Rearing:**

A) Locomotion, as measured by distance travelled in the 2hr locomotor test, is shown in both sexes, as well as separately for females and males. B) The time course of locomotion is depicted in 30min bins across the 2hr session. Vertical rearing is shown using the same scheme, for C) the entire 2hr session, and D) in 30min bins. \* $p < 0.05$  compared to vehicle.

Maximal concentration ( $C_{max}$ ) values in plasma, time at which maximal concentration was reached ( $T_{max}$ ), half-life of elimination ( $t_{1/2}$ ), and area under the curve (AUC) for  $^9$ -THC and its metabolites in adolescent male and female rats after 30 min aerosol exposure of  $^9$ -THC (25 or 100 mg/mL).

**Table 1.**

Analyte	Exposure $^9$ -THC (mg/mL)	Male				Female			
		$C_{max}$ (pmol/mL)	$T_{max}$ (min)	$t_{1/2}$ (min)	AUC (pmol • min/mL)	$C_{max}$ (pmol/mL)	$T_{max}$ (min)	$t_{1/2}$ (min)	AUC (pmol • min/mL)
$^9$ -THC	25	35	5.00	23.9	667	43	5.00	16.7	1329*
	100	58	5.00	18.6	1653	67	5.00	24.2	2333
11-OH-THC	25	< LOD	N/A	-	N/A	6	5.00	-	431
	100	6	5.00	-	380	17*	30.00	-	862
11-COOH-THC	25	< LOD	N/A	-	N/A	7	30.00	-	451
	100	< LOD	N/A	-	N/A	19	30.00	-	1124

\*  $P < 0.5$ . Student's *t*-test,  $n = 4-5$ .

Maximal concentration values ( $C_{\max}$ ) in brain, time at which maximal concentration was reached ( $T_{\max}$ ), half-life of elimination ( $t_{1/2}$ ), and area under the curve (AUC) for  $^9$ -THC and its active metabolite, 11-OH-THC, in adolescent male and female rats after 30 min aerosol exposure of  $^9$ -THC (25 or 100 mg/mL). 11-COOH-THC was undetectable in brain tissue.

**Table 2.**

Analyte	Exposure $^9$ -THC (mg/mL)	Male				Female			
		$C_{\max}$ (pmol/mL)	$T_{\max}$ (min)	$t_{1/2}$ (min)	AUC (pmol • min/mL)	$C_{\max}$ (pmol/mL)	$T_{\max}$ (min)	$t_{1/2}$ (min)	AUC (pmol • min/mL)
$^9$ -THC	25	125	5.00	17.3	6834	129	5.00	17.9	7545
	100	170	5.00	15.7	12366*	152	5.00	19.9	10372
11-OH-THC	25	36	5.00	-	2849	68*	15.00	-	5931*
	100	49	5.00	-	3222	90*	30.00	-	8282*

\*  $P < 0.5$ . Student's *t*-test,  $n = 4-5$ .

**Table 3.**

Brain-to-plasma ratio for  $\Delta^9$ -THC and its metabolite, 11-OH-THC, in adolescent male and female rats after 30 min aerosol exposure of  $\Delta^9$ -THC (25 or 100 mg/mL). Student's *t*-test, n = 4–5, no significance detected.

Analyte	Exposure $\Delta^9$ -THC (mg/mL)	Brain:Plasma	
		Male	Female
$\Delta^9$ -THC	25	4.02	3.10
	100	2.57	2.09
11-OH-THC	25	N/A	9.12
	100	7.47	7.36

Author Manuscript

Author Manuscript

Author Manuscript

Author Manuscript