

**UCLA**

**UCLA Previously Published Works**

**Title**

Making sense of sensory behaviors in vector-borne helminths.

**Permalink**

<https://escholarship.org/uc/item/0zd6q25n>

**Journal**

Trends in Parasitology, 38(10)

**Authors**

Wheeler, Nicolas  
Zamanian, Mostafa  
Hallem, Elissa

**Publication Date**

2022-10-01

**DOI**

10.1016/j.pt.2022.07.003

Peer reviewed



## Making sense of sensory behaviors in vector-borne helminths

Nicolas J. Wheeler<sup>1</sup>, Elissa A. Hallem<sup>2</sup>, Mostafa Zamanian<sup>1,\*</sup>

<sup>1</sup>Department of Pathobiological Sciences, University of Wisconsin-Madison, Madison, WI USA

<sup>2</sup>Department of Microbiology, Immunology & Molecular Genetics and Molecular Biology Institute, University of California, Los Angeles, Los Angeles, CA USA

### Abstract

Migrations performed by helminths are impressive and diverse, and accumulating evidence shows that many are controlled by sophisticated sensory programs. The migrations of vector-borne helminths are particularly complex, requiring precise, stage-specific regulation. We review the contrasting states of knowledge on snail-borne schistosomes and mosquito-borne filarial nematodes. Rich observational data exist for the chemosensory behaviors of schistosomes, while the molecular sensory pathways in nematodes are well described. Recent investigations on the molecular mechanisms of sensation in schistosomes and filarial nematodes have revealed some features conserved within their respective phyla, but adaptations correlated with parasitism are pronounced. Technological developments are likely to extend these advances, and we forecast how these technologies may be applied.

### Keywords

vector-borne helminths; sensory behaviors; chemoreceptors; chemosensation

## Sensory behaviors are critical to the success of vector-borne helminths

The survival and reproductive success of many helminths hinge on their ability to actively seek out competent hosts, penetrate host tissues, and perform complex intra-host migrations. The extent to which these behaviors are guided by specific sensory modalities remains poorly understood, especially for vector-borne parasitic nematodes and flatworms. Deciphering sensory behaviors that are critical to the transmission and development of vector-borne helminths will lead to a better understanding of the host-parasite interaction and may reveal new considerations for disease control.

\*Correspondence: mzamanian@wisc.edu (M. Zamanian).

**Publisher's Disclaimer:** This is a PDF file of an unedited manuscript that has been accepted for publication. As a service to our customers we are providing this early version of the manuscript. The manuscript will undergo copyediting, typesetting, and review of the resulting proof before it is published in its final form. Please note that during the production process errors may be discovered which could affect the content, and all legal disclaimers that apply to the journal pertain.

Declaration of Interests

The authors declare no competing interests.

Associating sensory processing with migratory behaviors in vector-borne helminths has been historically challenging. First, it is often unclear how well sensory behaviors observed in the laboratory reflect meaningful activity in nature. Survivorship bias in the mapping of parasite migrations can cause stochastic processes to be understood as precisely coordinated sensory events. For most helminths, we lack statistical resolution of how frequently parasites invade aberrant hosts or migrate in non-canonical ways within compatible hosts. Second, little is known about how the sensation of chemical, mechanical, thermal, geophysical, and photo stimuli interact to determine or refine locomotory outcomes. Third, sensory structures, receptors, and neural and molecular signaling pathways that transduce environmental cues in vector-borne helminths are poorly defined. Finally, it remains a matter of speculation how intraspecific and interspecific variations in parasite and host genetics affect parasite migration and therefore parasite-host compatibility and host range.

Headway is being made in these areas of investigation. We focus this review on recent progress in the understanding of sensory behaviors in mosquito-borne nematodes that cause human lymphatic filariasis and the snail-borne flatworms that cause human schistosomiasis. We use these systems to explore phylum- and species-specific aspects of sensory biology and to identify potential sensory behaviors and their molecular basis. We highlight unique facets of development within arthropod and molluscan intermediate hosts and contrasting states of knowledge about cues and molecular pathways that govern taxis in these important vector-borne helminths. While the literature describing taxis phenotypes in schistosomes runs deeper than in filarial nematodes, the signal transduction pathways that underlie nematode sensory biology are better understood. Lastly, we discuss how research in this arena will be enriched by recent technological advancements.

## Sensation in human schistosomes

Schistosomiasis is a snail-borne neglected tropical disease (NTD, see Glossary) that infects over 200 million people throughout much of the developing world [1]. Pathology results from egg-induced inflammation in the preferred locales of paired male and female worms - the mesenteric vasculature of the liver and intestines (*Schistosoma mansoni* and *S. japonicum*) and the urogenital system (*S. haematobium*). Schistosomes are transmitted by freshwater snail species belonging to genera including *Biomphalaria*, *Bulinus*, and *Oncomelania*. Schistosomes perform aquatic, intra-molluscan, and intra-mammalian migrations, each of which is coordinated in response to external chemical cues.

Miracidia hatch from human host-excreted eggs upon exposure to light and water (Figure 1A). Miracidia are non-feeding and have approximately 6–12 hours to find a suitable snail host before depletion of their glycogen stores [2]. Miracidia initially disperse along straight trajectories, guided by positive phototaxis, negative geotaxis, and chemical cues [3–5]. Miracidia respond to chemical cues that result in the accumulation of larvae near snail hosts or snail conditioned water (SCW), though the movement patterns differ by species [6–10].

Fractionation of SCW identified macromolecules that stimulate these behaviors in miracidia of *S. mansoni* and other schistosomes, including glycoconjugates and proteins [6,8]. Sensation of these macromolecules increases the rate of change of direction and the

turnback response, and stimulates repeated investigation, attachment, and penetration of the host after contact [7]. Other simpler cues, such as salt ions, produce a similar behavior [11], but it is hypothesized that macromolecule recognition is the dominant stimulus for miracidial taxis [6]. Recently, multiple SCW-derived peptides were shown to recapitulate these chemosensory behaviors, although it is unclear if these are the same cues described in earlier studies [9,10].

*S. mansoni* miracidia penetrate snail hosts nearly indiscriminately along the exposed tissues [12]. After penetrating, miracidia shed their ciliated plates and begin to develop into mother sporocysts (mSps). The musculature of mSps degenerates within 48 hours of penetration, limiting migratory capacity, but their daughter sporocysts (dSp) show directed migration through the loose connective tissue to the hepatopancreas [12]. Aberrant migrations do occur, resulting in degenerate dSps that yield few developing cercariae [12]. *S. mansoni* cercariae emerging from dSps can be found in several hemolymph-filled sinuses and veins, much less frequently in arteries and other ducts, and they preferentially emerge from the pseudobranch and mantle collar [12]. Thus, dSps and cercariae show intramolluscan migratory preferences that may involve sensory behaviors, but the experimental intractability of these stages has hindered study of migratory processes.

Cercariae shed from the snail tissue into fresh water, after which they employ a complex mixture of strategies to find a mammalian host. Like miracidia, cercariae do not feed and rely on 24–36 hours' worth of glycogen stores [13]. *S. mansoni* cercariae will naturally alternate between an active phase involving tail-first upward swimming and a passive phase involving downward sinking with the tail slowing its speed [14]. A combination of this bimodal motility with thermotaxis, phototaxis, and geotaxis enables cercariae to maintain a preferred vertical position in the water column [15,16]. *S. mansoni* cercariae are stimulated to attach to a surface by physical cues associated with large mammals moving through water – namely, increased water flow and shadows – in addition to chemical cues. Fatty acids, L-arginine, peptides, ceramides, glucosylceramides, and phospholipids associated with host tissue all play a role in stimulating the complex behaviors that cercariae exhibit during host identification and penetration [16].

Cercariae shed their tails during penetration of the mammalian host and transform into juvenile schistosomula. *S. mansoni* schistosomula burrow through the epidermis and dermis by negative phototaxis (in stark contrast to the positive phototaxis of cercariae) and attraction to glucose, L-arginine, and peptides [17,18]. The vast majority of *S. mansoni* schistosomula enter the vasculature through dermal venules (although aberrant migration through lymphatics and lymph nodes does occur) and passively traverse through venous blood flow to the lungs, through the pulmonary veins into the systemic circulation, and finally via several possible routes to the hepatic portal system [19,20]. It seems that no directed taxis is needed once in the systemic circulation, and entrance into the hepatic portal system occurs by chance, as an individual schistosomulum can traverse the pulmonary-systemic circuit multiple times and will passively arrive at the liver over the range of several weeks post-infection [19,20].

Schistosomes are unique among the trematodes in that they are gonochoristic, and male and female adults must physically pair to produce offspring. Opposite-sex worms pair in hosts experimentally infected with only three cercariae, emphasizing a remarkable ability to locate compatible mates [21]. Schistosomes can readily pair with other species, which has led to the proliferation of hybrid species in the wild, but some species show homospecific mate preference and heterospecific pairs will change partners to accommodate homospecific pairs [22,23]. Further, laterally bisected male carcasses can pair with viable females, stimulating oocyte maturation and embryogenesis [24,25]. Recent investigations have revealed the long-sought molecular controller of this male-dependent development – the dipeptide  $\beta$ -alanyl-tryptamine, produced by a nonribosomal peptide synthetase (NRPS) that is induced by the transcription factor GLI1 after pairing [118]. NRPS is synthesized in ciliated sensory neurons in the gynecophoral canal of paired male schistosomes, but the initial sensory stimulant, whether it be mechanical, chemical, or other, has yet to be uncovered [118]. Adult *S. mansoni* exhibit “chemo-orientation” and attraction toward each other or toward excretion/secretion products [26–31]. These observations suggest that pairing and development are regulated by both mechanical and chemical cues. Once paired, adult *S. mansoni* migrate through the mesenteric circulation in a manner that appears to be guided by the males [21,32].

## Sensation in filarial nematodes

Lymphatic filariasis (LF) is a mosquito-borne NTD that affects over 30 million people throughout 81 countries [1]. High worm burdens and chronic infection lead to physical disfigurement and disability resulting from the swelling and thickening of limbs (lymphedema) and scrotal tissues (hydrocele). These clinical manifestations result from dysfunction of the lymphatics, where adult worms reside. The etiological agents of lymphatic filariasis in humans include the clade III nematodes *Wuchereria bancrofti*, *Brugia malayi*, and *Brugia timori*. Although *B. malayi* accounts for less than 10% of global LF infections, it serves as the primary experimental model for human lymphatic filariasis, as the entire *B. malayi* life cycle can be maintained in the laboratory using jirds and susceptible sub-strains of *Aedes aegypti*.

Microfilariae of *Wuchereria* and *Brugia* spp. circulate in peripheral blood and are ingested by female mosquitoes during blood feeding (Figure 1A). In susceptible mosquito strains, these sheathed pre-L1 larvae passively move through the esophagus and arrive in the midgut. Within a few hours, microfilariae escape the blood and traverse the midgut epithelium to invade the hemocoel [33]. Although there are no studies of the sensory potential of *Brugia* spp. and *W. bancrofti* microfilariae, microfilariae of other filarial species have been shown to sense vector saliva [34]. It is possible that microfilariae move toward the midgut epithelium through sensing of epithelium-derived molecules or tactile cues that differentiate blood, midgut lumen, and the epithelial barrier. Indeed, sensory dysregulation of *Brugia* microfilariae resulted in fewer larvae establishing a successful mosquito infection [35]. The potential sensory crosstalk between microfilaria and mosquito microbiome constituents, in addition to endogenous host cues, has not been explored but presents an intriguing ecological question that could have ramifications for vector competence and host-parasite interactions [117].

The likelihood that midgut escape of *Wuchereria* and *Brugia* microfilariae is sensory driven is strengthened by contrasting their migration paths with that of the dog heartworm *Dirofilaria immitis* (Figure 1B). *D. immitis* microfilariae do not leave the mosquito alimentary canal, but instead migrate to the Malpighian tubules. Microfilariae of all three genera are approximately the same size but follow different migration routes within the same *Ae. aegypti* strain (Figure 1B) [36,37], strongly suggesting that the microfilariae actively migrate to distinct microenvironments. In addition, *D. immitis* moves against the flow of tubule contents and shows a preference for the distal tip, again suggesting that migration into the Malpighian tubules is driven by active taxis. Further, filaria larvae tend not to occupy all tubules, increasing the odds of mosquito survival and perhaps indicative of a sensory preference (B. Christensen, personal communication). However, alternative explanations for the differences between migratory routes of microfilariae could involve differences in enzyme secretions that promote midgut penetration in *Brugia/Wuchereria* but not *Dirofilaria*, the fact that *Dirofilaria* microfilariae are unsheathed and possibly incapable of puncturing the midgut, or differences in the cuticular surface of the microfilariae that lead to unique biochemical or immunological interactions with the host [38].

In susceptible mosquitoes, microfilariae ascend into the indirect flight muscles of the thorax, where *Brugia* spp. show a preference for the dorsal-longitudinal fibers and undergo intracellular development [39]. Confined within single muscle cells, larvae molt twice and grow to reach the human-infective L3 stage. L3s break out of the muscles and migrate to the lumen of the mouthparts. Migration through the body cavity to the head and proboscis begins roughly 8 days post-infection and represents the final journey within the mosquito [40]. Most L3s will accumulate in the head region, but larvae can still be found in other regions within the mosquito body cavity [40]. These large and motile L3s move throughout the hemocoel, and it is probable that their preference for the head is mediated by an anterior-posterior chemical gradient.

The mechanisms by which L3s exit from the head of the mosquito onto the skin of the mammalian host are poorly understood. Large numbers of larvae rapidly escape the mouthparts during the act of mosquito probing and blood feeding [41]. It is hypothesized that parasite release is mainly stimulated by the mechanical bending of the mosquito labium, with other factors such as temperature, humidity, and components of host blood playing a minor role [42]. Both *Brugia* and *Dirofilaria* L3s will emerge from infected mosquitoes when submersed in warm, nutrient rich media [116], suggesting that mechanical bending of the labium is not necessary for proboscis escape. However, the relative importance of mechanical bending, thermal cues, and chemical cues during a blood meal are unknown. L3s that escape from the proboscis are dropped onto the skin in a small volume of hemolymph and must then actively penetrate host skin [43–45]. Both chemosensory and thermosensory cues appear to be important for the process of skin penetration. For example, exposure of *B. pahangi* L3s to mammalian serum results in chemotaxis toward the serum and skin-penetration behavior [46,47], and this phenotype is inhibited by chemical treatment or reverse genetics against putative sensory effectors [35]. In the case of *Brugia*, L3s exhibit a mixture of aversive and attractive responses to a panel of vector and skin-associated cues, and exposure to human skin cells increases larval motility [48–52]. Host body temperature also stimulates increased L3 motility in *B. pahangi*, *W. bancrofti* and *D. immitis* as well as

positive thermotaxis in *D. immitis* [35,43,53]. These results strongly suggest that orientation toward and penetration into skin are active sensory-driven processes. A plausible model for L3 sensation during penetration proposes sodium ions from blood as the primary attractant, supplemented by thermal cues and amino acids such as arginine [50].

After infection of the human host, larvae migrate to the lymphatics, where they develop into sexually dimorphic adult worms over the course of months. A recent investigation of the route of infection of the filarial parasite *Litomosoides sigmodontis* in rodents carefully tracked the early migrations of larvae [54]. Unlike *Brugia* and *Wuchereria*, which remain in the lymphatics, *L. sigmodontis* enters the lymphatics and continues to the pleural cavity. *L. sigmodontis* larvae mechanically break the basement membrane of lymphatic collectors and use their tail to push off lymphatic walls and valves to achieve translational motion. Larvae travel in the same direction as fluid flow *in vitro*, respond positively to this flow, and progress through a microfluidic chamber in a way that cannot be explained by fluid flow alone. Interestingly, free-living nematodes are also able to invade and translate down the lymphatics, and the lymphatics are a known route for systemic dissemination for non-filarial nematode parasites such as *Strongyloides stercoralis* [54]. It is clear that larvae are active during this process, but unclear how much of that activity is coordinated by sensory cues.

A role for sensory processes in mating and copulation in filarial nematodes has not been investigated. Clade V nematodes synthesize and secrete ascarosides, which are involved in chemoreceptor-mediated mate attraction [55], but ascarosides have yet to be isolated in filarial nematodes and they are notably absent from another clade III nematode (*Ascaris suum*) [56]. Sensory neurons expressing chemoreceptors and mechanoreceptors are present in the caudal regions near the sexual organs of some male nematodes, and some chemoreceptors are expressed in the posterior portion of *B. malayi* males [35,57]. Extracellular recordings from *B. pahangi* adults revealed that they show increased neural activity in the presence of fetal calf serum and glutathione, suggesting that adults are capable of responding to host chemosensory cues [58].

## Sensory structures and molecular pathways

Descriptions of schistosome sensory behaviors have been aided by the ability to observe the aquatic stages in laboratory contexts that better reflect natural environments, while the host-restriction of the filarial nematode life cycle complicates such investigations. In contrast, much more is known about nematode sensory structures and pathways, largely owing to the extensive study of sensory biology in the model nematode *Caenorhabditis elegans*. While observational studies and information gleaned from model systems set a foundation, the molecular pathways and physical structures that control sensory behaviors in schistosomes and filarial nematodes are an open area of investigation.

### Schistosomes

Schistosomes undergo significant morphological changes during development, and sensory structures are not well characterized. However, schistosomes contain many types of papillae that are spread throughout the body but often concentrated on the anterior portion. These structures contain nerve endings, cilia, and/or tegumental openings, and likely provide

sensory function [59–63]. Recently, staining of the secreted protein SmK77 in cercariae was found to specifically demarcate the peripheral nervous system, which included bulbous sensory endings on the apical surface [64]. Similar markers of sensory structures in other stages have yet to be identified.

There are a few leads regarding the schistosome receptors and effectors involved in described sensory responses (Figure 2). Several kinases (ERK/MAPK, FES, and PKC) have been implicated in larval responses to different environmental stimuli, suggesting that receptor tyrosine kinases and G protein-coupled receptors (GPCRs) may serve as upstream receptors [65,66]. SmHSP70 may be involved in the skin-attachment response of cercariae, and the second messenger cAMP is important in miracidia motility and chemokinesis [67,68].

Flatworms express a clade of GPCRs, the Platyhelminth-specific Rhodopsin-like Orphan Family (PROF), that show taxon-restriction, expansion relative to other GPCR families, and neuropeptide receptor-like features [69,70]. PROFs are structurally similar to the nematode chemosensory GPCR family *srw* [71,72], but whether this similarity reflects a conserved chemosensory function is unknown. The implication of L-arginine, peptides, and intracellular cAMP in miracidial and cercarial sensory behaviors point to peptide-sensing GPCRs as potential chemosensory pathway initiators [67]. Trematodes also express opsin-like GPCRs that are likely to be involved in the phototaxis of cercariae and miracidia [69,70].

Transient Receptor Potential (TRP) channels are another potential player in sensory behavior, as in other animal systems. TRP channels have been studied in schistosomes as putative drug targets and as a molecular target for the antischistosomal drug praziquantel [73–75]. Schistosomes have lost the TRPV family that is associated with sensation in nematodes and other metazoans, but it is possible that these functions have been co-opted by other TRP subfamilies. For instance, mammalian TRPV1 agonists have effects on SmTRPA and ShTRPA, which are TRPA1-like channels, and agonists including host-derived compounds significantly increased *in vitro* motility of schistosomula and adults and activated these channels when heterologously expressed [76,77]. In *Schmidtea mediterranea*, a free-living flatworm, *Smed-TRPA1* functions in noxious heat and chemical avoidance, but it is unclear if this function is shared in schistosomes [78].

### Filarial nematodes

The canonical nematode nervous system is substantially different from that of flatworms, and more is known about its function. Like all nematodes, filarial parasitic nematodes have sensory amphids [49]. These organs contain ciliated neurons with dendrites extended into pores, where they receive environmental cues. The neuroanatomical structure of amphids is incredibly conserved across nematode clades, with *Ascaris* (a clade III intestinal parasite related to filarial nematodes) containing positional homologs of most of the *C. elegans* amphid neurons [79]. Other somatosensory neurons are found along the body wall, and some nematodes, including *Brugia*, contain phasmids at the cephalic end. The phasmid neurons of *C. elegans* are polymodal, responding to temperature, chemicals, osmolarity, and touch.



The chemosensory transduction pathways of *C. elegans* are well-studied (Figure 2). Emerging evidence suggests that the primary components of these pathways - GPCRs, ion channels such as TRP channels and cyclic nucleotide-gated (CNG) channels, and guanylyl cyclases (GCs) - are shared among diverse parasitic and free-living nematodes [80–82]. For instance, filarial nematodes share most of the key CNG channels and TRP channels such as TAX-2/TAX-4 and OSM-9/OCR-2 [35]. However, the chemoreceptive GPCRs are greatly diverged in parasites, including filaria, and parasites in general have fewer chemoreceptors than their free-living counterparts [35,83,84]. Indeed, there is a strong correlation between the number of chemoreceptive GPCRs in a nematode's genome and the amount of time it spends in a free-living, terrestrial state during its life cycle [35]. While *osm-9* and *tax-4* have been linked to chemosensory and thermosensory transduction in filarial nematodes, the chemoreceptive GPCRs have yet to be studied experimentally [35].

Other nematode sensory modalities (e.g., thermal and mechanical) often employ the same or similar components as the chemosensory pathway, allowing integration of multiple stimuli [85]. For example, GCs, which can operate downstream of chemoreceptors, can receive thermal cues directly and synthesize cGMP to activate TAX-2/TAX-4 [82,86], and TRPs can be primary mechanosensory receptors [87,88].

### Sensory-mediated migration as a unique target for parasite control

Current strategies for treatment and transmission control of both schistosomiasis and lymphatic filariasis rely almost entirely on chemotherapeutics, primarily through mass drug administration (MDA). Vector control of mosquitoes and snails has been attempted in some regions and has been lauded as a key effort for elimination of both diseases, but success thus far has been sporadic [89,90]. Inhibiting or disorienting sensation, on the other hand, has not been considered as an exploitable behavior. In fact, overlooking the ability of schistosomes to host seek has resulted in at times misguided efforts for parasite control through the introduction of decoy snails.

Some successful non-MDA strategies that focus on prevention may be instructive and provide a foundation for developing schemes targeting sensation. In veterinary medicine, canine heartworm is prevented by the regular administration of small molecules that inhibit the development of larval filaria after transmission from the mosquito to the definitive host [91]. Routine disbursement of the drugs active against early larvae ensures that disease is never established, and adult worms do not develop and reproduce. Dysregulation of early-infective processes that require sensation, such as larval invasion and migration to the blood/lymphatics, in a strategy analogous to the control of heartworm disease could be employed. While such a strategy would not be feasible using MDA given the requirement of drug administration at precise developmental time points, it may be pertinent in hotspots that have proven to be recalcitrant to MDA, or as one part of a combination therapy.

Schistosomiasis hotspots may also be areas in which an alternative sensation-targeting strategy might prove to be effective. In these areas, snail population reduction via molluscicide treatment, habitat reduction, or gene drives has been encouraged by public investigators, and chemical-based snail control is a strong recommendation in the WHO's

2022 guidelines on control and elimination of human schistosomiasis [92–95]. A better understanding of the process by which miracidia seek and infect snails could lead to the discovery and development of compounds that block these processes. Alternatively, if transgenesis and gene drives in snails come to fruition, it may be possible to generate “odorless” snails, imperceptible to miracidia. Indeed, studies suggest that a major attractive component of snail secretions is a glycoprotein, which could conceivably be knocked-out via genetic strategies [9,10].

## Technological advancements will allow deeper understanding of sensation in vector-borne helminths

CRISPR/Cas9-mediated targeted mutagenesis has recently been applied to filarial nematodes and schistosomes to study non-sensory processes [96,97]. This approach has already been used to study the molecular basis of chemosensation and thermosensation in the skin-penetrating gastrointestinal nematode *Strongyloides stercoralis* [98]. In the first such studies, the role of the *S. stercoralis tax-4* gene in driving the host-seeking behaviors of infective larvae was investigated. Like *C. elegans tax-4*, *Ss-tax-4* is required for temperature- and odorant-driven host seeking [35,81,99,100]. Thus, sensory-driven host seeking in some parasitic nematodes occurs at least in part through the use of sensory pathways that are conserved in free-living nematodes [35,81,99,100]. It remains to be seen if new approaches for targeted mutagenesis can be leveraged in schistosomes and filarial nematodes to functionally characterize additional sensory effectors. These approaches would focus on life stages that have readily deployable *in vitro* sensory assays (L3s in filarial nematodes, aquatic stages in schistosomes), and would therefore require adaptation of current knock-out strategies to make mutations heritable (not yet demonstrated in schistosomes) or allow for propagation of the mutants through the vector (not yet performed in filarial nematodes).

Even amid exciting developments in genome editing of vector-borne helminths, transient gene knockdown strategies like RNA interference (RNAi) remain crucial and exhibit certain advantages over permanent gene knockout. RNAi has been employed recently in larval stages of schistosomes and filariae to investigate sensory behaviors [35, 66]. The transient nature of RNAi enables the study of genes that may be essential in other life stages and thus unamenable to permanent knockout. This limitation in genome editing is especially important to note for studies of sensory behaviors, which are integral to parasite success. Indeed, *S. stercoralis* infective larvae with a homozygous deletion of *tax-4* do not activate or exit developmental arrest upon exposure to host sensory cues [81]. In the case of *Strongyloides* species, mutations in genes such as *tax-4* that are essential for progression through the entire life cycle can be maintained in the lab by propagating the worms through mammalian hosts as heterozygotes and then mating heterozygous free-living adults to generate homozygous infective larvae [119]. However, this approach may not be feasible for helminths that lack a free-living generation. An inducible knockout approach like the auxin-inducible degron system in *C. elegans* could also circumnavigate this limitation and provide temporal control of protein expression, but such a system has not yet been adapted to parasitic helminths [115].

These functional genomic tools can also be used to knock out potential sensory stimulants emitted by the vectors. Genome editing and RNAi is routine in mosquitoes and continues to be further developed in mollusks. Since most putative chemical stimulants of parasite sensory behaviors are not proteins, this approach would require targeting biosynthetic pathway components rather than the sensory cue itself. However, *S. mansoni* miracidia are highly responsive to a snail peptide, and RNAi could be used to knock down its expression [9,10].

Microfluidic devices will also benefit the study of the sensory behaviors of both schistosomes and filarial parasites by increasing reproducibility and throughput. The only chemotaxis assay that exists for filarial nematodes is restricted to the L3 stage and relies on agarose plates that do not resemble the environments that infective larvae naturally encounter [47], and those used for aquatic stages of schistosomes are not easily scalable [9,101,102]. Microfluidic devices can be used to present aqueous environments and physical surfaces that can better scaffold parasite motility [54]. Designs can be extended to generate simple chambers to create stable gradients and measure parasite translational movement toward an attractant or away from a repellent [103]. Alternatively, devices can restrain the body of the parasite while allowing free swinging and choice of the head [104]. Chemosensory choice chambers could be readily adapted for schistosome miracidia and cercaria, which are small and motile in aquatic environments, but filarial larvae and larger adult stages will likely necessitate more complex approaches. The pairing of high-content phenotypic assays with functional genomic tools such as CRISPR will enable the discovery of pathways that underlie the critical chemosensory behaviors of these important vector-borne parasites.

Most sensory assays rely on manual tallying of experimental subjects in regions of interest followed by the calculation of single metrics such as the chemotaxis index. Video recording of assay chambers with aqueous environments has been performed, but measurement of behaviors from these videos do not always provide readily interpretable quantitative outputs, and video platforms often capture only part of the chamber. While many trackers have been utilized for worms that readily crawl on an agarose plate (e.g., [100,105]), these have not been easily translated to either filarial nematodes or schistosomes. Advancements in imaging now allow for the unmagnified, high-resolution recordings of assay chambers in precisely controlled environments [106,107]. Paired with object tracking and machine learning, these platforms show great promise in capturing, annotating, and quantifying complex sensory behaviors.

Finally, new technologies will also enable the identification of sensory cells in vector-borne helminths. Recently, single-cell atlases of adult and juvenile *S. mansoni* have been generated, enabling the annotation of transcriptionally distinct clusters of cell types [108–110]. These data identified clusters of ciliated neurons in adult *S. mansoni* that display structural features consistent with sensory function. Probing neuronal clusters show that PROF receptors are mainly expressed in neurons, but none are enriched in ciliated neurons. In contrast, a TRP channel (*Smp\_130890*) was highly enriched in ciliated neurons [111]. Interestingly, this TRPM protein is the protein most closely related to a target of praziquantel, TRPM<sub>PZQ</sub> [112]. Deeper analyses of these cells' transcriptomes will likely

uncover additional putative chemoreceptors, and experimental selection for neuronal cells or integration with spatial information will greatly enrich these studies [113,114].

## Concluding remarks

Vector-borne helminths engage in sensory-driven behaviors at multiple stages of their life cycle, both inside and outside the host. Recent functional genomic advances across parasitic helminths have begun to illuminate the molecular mechanisms that drive these behaviors. Many questions remain about the underlying neural mechanisms and the potential for translating knowledge of these behaviors into real opportunities for parasite control (see Outstanding Questions). Even if not directly exploited in control strategies, understanding the basic biology of vector-borne helminth sensation could better inform mathematical modeling efforts that explore infection dynamics and the potential results of altered treatment and control regimens. New technologies for probing the functions of genes, neurons, and circuits in parasitic helminths hold great promise for answering these questions in the coming years. Though sensory behaviors in the wild often occur in macroscopic spatial contexts, miniaturized assays could be developed that enable high-content approaches, providing a means by which sensation can be examined with greater throughput and resolution. A toolkit that includes high-resolution neural and behavioral analyses, experimental frameworks that accurately mimic *in vivo* sensory stimuli, and a panoramic perspective that places parasites in the context of their real-world hosts will cooperate to build a comprehensive model of these host-parasite interactions.

## Acknowledgments

We are grateful to Bruce Christensen for providing information regarding microfilariae migration in mosquitoes. This work was supported by National Institutes of Health NIAID grant R01 AI151171 to M.Z; an NIH Ruth Kirschstein NRSA fellowship F32 AI152347 to NJW; and a Burroughs-Wellcome Fund Investigators in the Pathogenesis of Disease Award, a Howard Hughes Medical Institute Faculty Scholar Award, and National Institutes of Health R01 DC017959 to E.A.H.

## Glossary

### **Cercaria**

The third larval stage of schistosomes; swims in water and infects humans

### **CRISPR/Cas9-mediated targeted mutagenesis**

A technology that allows for the introduction of precise mutations in a genome

### **Cyclic nucleotide-gated channel**

Ion channels that are activated by cyclic nucleotides; often involved the transduction of sensory signals

### **ERK/MAPK**

Widely conserved kinases typically involved in intracellular signaling initiated by an extracellular cue

### **FES**

Tyrosine kinase conserved throughout animals

**G protein-coupled receptor**

Large superfamily of cell-surface receptors; seven transmembrane-domains; some function as chemoreceptors in nematodes and other metazoa

**Gene drive**

A technology that drives a selfish genetic element through a population; can be used to replace or suppress populations of disease vectors

**Gonochoristic**

Two sexes

**Guanylyl cyclase**

Enzyme that produces cyclic guanosine monophosphate, a second messenger that is often downstream of a cell-surface receptor's activation; some nematode GCs are direct receptors for sensory stimuli

**Malpighian tubules**

The mosquito's functional analog of the kidney, involved in regulation of water and ions

**Microfilaria**

The mosquito-infectious, blood-dwelling stage of filarial nematodes

**Microfluidic devices**

Polydimethylsiloxane (PDMS) chips that precisely control the flow of fluid, used in a diverse range of bioengineering approaches

**Miracidia**

The first larval stage of schistosomes; swims in water and infects snails

**Neglected tropical disease**

Infectious diseases categorized by the WHO as "neglected" due to a lack of economic incentive for research investment

**Opsin**

Conserved type of GPCR that primarily senses photons

**PKC**

Serine/threonine kinase often activated by calcium or diacylglycerol downstream of a G protein-coupled receptor

**Platyhelminth-specific, Rhodopsin-like Orphan Family (PROF)**

a family of G protein-coupled receptors that have unknown function but have been hypothesized to be involved in chemosensation

**Receptor tyrosine kinase**

Single transmembrane domain receptor that has an intracellular kinase domain

**Schistosomula**

The fourth larval stage of schistosomes; resides in humans and migrates through blood

**Sporocyst**

The second larval stage of schistosomes; resides in snails, where mother sporocysts asexually reproduce to generate daughter sporocysts

**Transient receptor potential channel**

Ion channels that are activated by diverse mechanisms, often involved in sensory detection

**References**

1. GBD 2016 Disease and Injury Incidence and Prevalence Collaborators (2017) Global, regional, and national incidence, prevalence, and years lived with disability for 328 diseases and injuries for 195 countries, 1990–2016: a systematic analysis for the Global Burden of Disease Study 2016. *Lancet* 390, 1211–1259 [PubMed: 28919117]
2. Tielens AG et al. (1991) The aerobic energy metabolism of *Schistosoma mansoni* miracidia. *Mol. Biochem. Parasitol* 46, 181–184 [PubMed: 1852172]
3. Mason PR and Fripp PJ (1977) The reactions of *Schistosoma mansoni* miracidia to light. *J. Parasitol* 63, 240–244 [PubMed: 404417]
4. Chernin E and Dunavan CA (1962) The Influence of Host-Parasite Dispersion upon the Capacity of *Schistosoma Mansoni* Miracidia to Infect *Australorbis Glabratus*\*. *Am. J. Trop. Med. Hyg* 11, 455–471 [PubMed: 13878745]
5. Saladin KS (1979) Behavioral parasitology and perspectives on miracidial host-finding. *Z. Parasitenkd* 60, 197–210 [PubMed: 396728]
6. Haberl B et al. (1995) *Schistosoma mansoni* and *S. haematobium*: miracidial host-finding behaviour is stimulated by macromolecules. *Int. J. Parasitol* 25, 551–560 [PubMed: 7635633]
7. Haberl B and Haas W (1992) Miracidium of *Schistosoma mansoni*: A macromolecular glycoconjugate as signal for the behaviour after contact with the snail host. *Comp. Biochem. Physiol. A Physiol* 101, 329–333
8. Dissous C et al. (1986) Stimulation of *Schistosoma mansoni* miracidia by a 80 kDa glycoprotein from *Biomphalaria glabrata*. *Mol. Biochem. Parasitol* 21, 203–209 [PubMed: 3807942]
9. Wang T et al. (2019) A *Biomphalaria glabrata* peptide that stimulates significant behaviour modifications in aquatic free-living *Schistosoma mansoni* miracidia. *PLoS Negl. Trop. Dis* 13, e0006948 [PubMed: 30668561]
10. Phan P, Liang D, Zhao M, Wyeth RC, Fogarty C, Duke MG, et al. Analysis of rhodopsin G protein-coupled receptor orthologs reveals semiochemical peptides for parasite (*Schistosoma mansoni*) and host (*Biomphalaria glabrata*) interplay. *Sci Rep*. 2022 May 17;12(1):8243. [PubMed: 35581232]
11. Stibbs HH et al. (1976) Magnesium emitted by snails alters swimming behaviour of *Schistosoma mansoni* miracidia. *Nature* 260, 702–703 [PubMed: 1264241]
12. Pan CT (1965) Studies on the host-parasite relationship between *Schistosoma mansoni* and the snail *Australorbis glabratus*. *Am. J. Trop. Med. Hyg* 14, 931–976 [PubMed: 5840648]
13. Ruth Lawson J and Wilson RA (1980) The survival of the cercariae of *Schistosoma mansoni* in relation to water temperature and glycogen utilization. *Parasitology* 81, 337–348 [PubMed: 7443297]
14. Graefe G et al. (1967) Forked Tail of the Cercaria of *Schistosoma mansoni*—a Rowing Device. *Nature* 215, 207 [PubMed: 6049130]
15. Saladin KS (1982) *Schistosoma mansoni*: cercarial responses to irradiance changes. *J. Parasitol* 68, 120–124 [PubMed: 7077438]
16. Haeberlein S and Haas W (2008) Chemical attractants of human skin for swimming *Schistosoma mansoni* cercariae. *Parasitol. Res* 102, 657–662 [PubMed: 18157547]
17. Grabe K and Haas W (2004) Navigation within host tissues: *Schistosoma mansoni* and *Trichobilharzia ocellata* schistosomula respond to chemical gradients. *Int. J. Parasitol* 34, 927–934 [PubMed: 15217731]

18. Grabe K and Haas W (2004) Navigation within host tissues: cercariae orientate towards dark after penetration. *Parasitol. Res* 93, 111–113 [PubMed: 15118907]
19. Miller P and Wilson RA (1980) Migration of the schistosomula of *Schistosoma mansoni* from the lungs to the hepatic portal system. *Parasitology* 80, 267–288 [PubMed: 7367042]
20. Miller P and Wilson RA (1978) Migration of the schistosomula of *Schistosoma mansoni* from skin to lungs. *Parasitology* 77, 281–302 [PubMed: 748837]
21. Pellegrino J and Coelho PM (1978) *Schistosoma mansoni*: wandering capacity of a worm couple. *J. Parasitol* 64, 181–182 [PubMed: 627964]
22. Tchuem Tchuente LA et al. (1995) Change of mate and mating competition between males of *Schistosoma intercalatum* and *S. mansoni*. *Parasitology* 110, 45–52 [PubMed: 7845711]
23. Leger E and Webster JP (2017) Hybridizations within the Genus *Schistosoma*: implications for evolution, epidemiology and control. *Parasitology* 144, 65–80 [PubMed: 27572906]
24. Wang J et al. (2019) Systematically improved in vitro culture conditions reveal new insights into the reproductive biology of the human parasite *Schistosoma mansoni*. *PLoS Biol.* 17, e3000254 [PubMed: 31067225]
25. Popiel I and Basch PF (1984) Reproductive development of female *Schistosoma mansoni* (Digenea: Schistosomatidae) following bisexual pairing of worms and worm segments. *J. Exp. Zool* 232, 141–150 [PubMed: 6502090]
26. Eveland LK et al. (1982) *Schistosoma mansoni*: adult worm chemoattraction, with and without barriers. *Exp. Parasitol* 54, 271–276 [PubMed: 7128720]
27. Eveland LK et al. (1983) *Schistosoma mansoni*: adult worm chemoattraction with barriers of specific molecular weight exclusions. *Exp. Parasitol* 56, 255–258 [PubMed: 6684590]
28. Childs JE et al. (1986) IN VITRO ORIENTATION OF MALE *Schistosoma mansoni* TO EXTRACTS DERIVED FROM FEMALE SCHISTOSOMES. *J. Chem. Ecol* 12,
29. Imperia PS et al. (1980) Pheromonal attraction of *Schistosoma mansoni* females toward males in the absence of worm-tactile behavior. *J. Parasitol* 66, 682–684 [PubMed: 7420249]
30. Haseeb MA and Eveland LK (1991) *Schistosoma mansoni*: a chemoattractive factor released by males and its receptor in females. *Experientia* 47, 970–974 [PubMed: 1915782]
31. Ghaleb AM et al. (2006) A 3 kDa peptide is involved in the chemoattraction in vitro of the male *Schistosoma mansoni* to the female. *Microbes Infect.* 8, 2367–2375 [PubMed: 16849041]
32. Standen OD (1953) The relationship of sex in *Schistosoma mansoni* to migration within the hepatic portal system of experimentally infected mice. *Ann. Trop. Med. Parasitol* 47, 139–145 [PubMed: 13080976]
33. Christensen BM and Sutherland DR (1984) *Brugia pahangi*: exsheathment and midgut penetration in *Aedes aegypti*. *Transactions of the American at* <<https://www.jstor.org/stable/3226478>>
34. Stallings T et al. (2002) Orientation of *Onchocerca lienalis* stiles (Filarioidea: Onchocercidae) microfilariae to black fly saliva. *J. Med. Entomol* 39, 908–914 [PubMed: 12495191]
35. Wheeler NJ et al. (2020) Genetic and functional diversification of chemosensory pathway receptors in mosquito-borne filarial nematodes. *PLoS Biol.* 18, e3000723 [PubMed: 32511224]
36. Taylor AE (1960) The development of *Dirofilaria immitis* in the mosquito *Aedes aegypti*. *J. Helminthol* 34, 27–38 [PubMed: 13775556]
37. Lindsay SW (1986) The migration of infective larvae of *Brugia pahangi* within the mosquito, *Aedes aegypti*. *Parasitology* 92, 369–378 [PubMed: 3714302]
38. Agudelo-Silva F and Spielman A (1985) Penetration of mosquito midgut wall by sheathed microfilariae. *J. Invertebr. Pathol* 45, 117–119 [PubMed: 3968443]
39. Beckett EB and Macdonald WW (1970) The distribution of larvae of *Brugia malayi* and *Brugia pahangi* in the flight muscle fibres of *Aedes aegypti* and *Mansonia uniformis*. *Parasitology* 61, 211–218 [PubMed: 4394923]
40. Erickson SM et al. (2009) Mosquito infection responses to developing filarial worms. *PLoS Negl. Trop. Dis* 3, e529 [PubMed: 19823571]
41. Lavoipierre MM and Ho BC (1973) Studies on filariasis. II. *Brugia pahangi*: the escape of infective larvae from the mosquito. *J. Helminthol* 47, 339–352 [PubMed: 4775754]

42. Lavoipierre MM and Ho BC (1966) Studies on filariasis. I. The migration of the infective larvae of *Brugia pahangi* in *Aedes togoi* and their loss from the mosquito under experimental conditions. *J. Helminthol* 40, 343–362 [PubMed: 5962368]
43. Menon TB et al. (1941) The behaviour of the infective larvae of *Wuchereria bancrofti* with special reference to their mode of escape and penetration of skin. *Indian J. Med. Res* 29,
44. Ewert A (1967) Studies on the transfer of infective *Brugia pahangi* larvae from vector mosquitoes to the mammalian host. *Trans. R. Soc. Trop. Med. Hyg* 61, 110–113 [PubMed: 6031937]
45. McGreevy PB et al. (1974) Studies on filariasis. III. *Dirofilaria immitis*: emergence of infective larvae from the mouthparts of *Aedes aegypti*. *J. Helminthol* 48, 221–228 [PubMed: 4448885]
46. Gunawardena NK et al. (2003) Chemotactic response of *Brugia pahangi* infective larvae to jird serum in vitro. *Parasitol. Res* 90, 337–342 [PubMed: 12695907]
47. Kusaba T et al. (2008) In vitro chemotaxis of *Brugia pahangi* infective larvae to the sera and hemolymph of mammals and lower animals. *Parasitol. Int* 57, 179–184 [PubMed: 18243775]
48. Kassis T et al. (2014) An integrated in vitro imaging platform for characterizing filarial parasite behavior within a multicellular microenvironment. *PLoS Negl. Trop. Dis* 8, e3305 [PubMed: 25412444]
49. Fraser LM et al. (2018), Chemosensory structure and function in the filarial nematode, *Brugia malayi*. *bioRxiv*, doi:10.1101/427229
50. Mitsui Y et al. (2021) Chemotactic responses of *Brugia pahangi* infective third-stage larvae to tris(hydroxymethyl)aminomethane-related compounds and amino acids. *J. Helminthol* 95, e72 [PubMed: 34879884]
51. Mitsui Y et al. (2018) Chemoattractant activity of tris-(hydroxymethyl)aminomethane for *Brugia pahangi* infective third-stage larvae. *J. Helminthol* 92, 317–321 [PubMed: 28735573]
52. Mitsui Y et al. (2012) In vitro chemotactic responses of *Brugia pahangi* infective larvae to sodium ions. *J. Helminthol* 86, 406–409 [PubMed: 22030560]
53. Mok M et al. (1986) Thermotaxis in third and fourth-stage *Dirofilaria immitis* larvae. *J. Helminthol* 60, 61–64 [PubMed: 3701022]
54. Kilarski WW et al. (2019) Inherent biomechanical traits enable infective filariae to disseminate through collecting lymphatic vessels. *Nat. Commun* 10, 2895 [PubMed: 31263185]
55. Choe A et al. (2012) Sex-specific mating pheromones in the nematode *Panagrellus redivivus*. *Proc. Natl. Acad. Sci. U. S. A* 109, 20949–20954 [PubMed: 23213209]
56. Choe A et al. (2012) Ascarside signaling is widely conserved among nematodes. *Curr. Biol* 22, 772–780 [PubMed: 22503501]
57. Vidal B et al. (2018) An atlas of *Caenorhabditis elegans* chemoreceptor expression. *PLoS Biol.* 16, e2004218 [PubMed: 29293491]
58. Rolfe RN et al. (2001) Electrophysiological analysis of responses of adult females of *Brugia pahangi* to some chemicals. *Parasitology* 122, 347–357 [PubMed: 11289071]
59. Collins JJ 3rd et al. (2011) An atlas for *Schistosoma mansoni* organs and life-cycle stages using cell type-specific markers and confocal microscopy. *PLoS Negl. Trop. Dis* 5, e1009 [PubMed: 21408085]
60. Dorsey CH et al. (2002) Ultrastructure of the *Schistosoma mansoni* cercaria. *Micron* 33, 279–323 [PubMed: 11742750]
61. Pan SC (1980) The fine structure of the miracidium of *Schistosoma mansoni*. *J. Invertebr. Pathol* 36, 307–372 [PubMed: 7452064]
62. Basch PF and Basch N (1982) *Schistosoma mansoni*: scanning electron microscopy of schistosomula, adults and eggs grown in vitro. *Parasitology* 85 (Pt 2), 333–338 [PubMed: 7145475]
63. Short RB and Gagné HT (1975) Fine structure of possible photoreceptor in cercariae of *Schistosoma mansoni*. *J. Parasitol* 61, 69–74 [PubMed: 1117374]
64. Parker-Manuel SJ and Wilson RA (2022) An atlas of the germ ball-cercaria-schistosomulum transition in *Schistosoma mansoni*, using confocal microscopy and in situ hybridisation. *Current Research in Parasitology & Vector-Borne Diseases*



65. Ressurreição M et al. (2015) Sensory Protein Kinase Signaling in *Schistosoma mansoni* Cercariae: Host Location and Invasion. *J. Infect. Dis* 212, 1787–1797 [PubMed: 26401028]
66. Tavares NC et al. (2020) *Schistosoma mansoni* FES Tyrosine Kinase Involvement in the Mammalian Schistosomiasis Outcome and Miracidia Infection Capability in *Biomphalaria glabrata*. *Front. Microbiol* 11, 963 [PubMed: 32595609]
67. Matsuyama H et al. (2004) THE INVOLVEMENT OF CYCLIC ADENOSINE MONOPHOSPHATE IN THE CONTROL OF SCHISTOSOME MIRACIDIUM CILIA. *J. Parasitol* 90, 8–14 [PubMed: 15040661]
68. Ishida K and Jolly ER (2016) Hsp70 May Be a Molecular Regulator of Schistosome Host Invasion. *PLoS Negl. Trop. Dis* 10, e0004986 [PubMed: 27611863]
69. Zamanian M et al. (2011) The repertoire of G protein-coupled receptors in the human parasite *Schistosoma mansoni* and the model organism *Schmidtea mediterranea*. *BMC Genomics* 12, 596 [PubMed: 22145649]
70. Hahnel S et al. (2018) Tissue-specific transcriptome analyses provide new insights into GPCR signalling in adult *Schistosoma mansoni*. *PLoS Pathog.* 14, e1006718 [PubMed: 29346437]
71. Krishnan A et al. (2014) Insights into the origin of nematode chemosensory GPCRs: putative orthologs of the *Srw* family are found across several phyla of protostomes. *PLoS One* 9, e93048 [PubMed: 24663674]
72. Saberi A et al. (2016) GPCRs Direct Germline Development and Somatic Gonad Function in Planarians. *PLoS Biol.* 14, e1002457 [PubMed: 27163480]
73. Bais S and Greenberg RM (2016) TRP channels in schistosomes. *Int. J. Parasitol. Drugs Drug Resist* 6, 335–342 [PubMed: 27496302]
74. Babes R-M et al. (2017) The anthelmintic drug praziquantel is a selective agonist of the sensory transient receptor potential melastatin type 8 channel. *Toxicol. Appl. Pharmacol* 336, 55–65 [PubMed: 29054683]
75. Bais S et al. (2017) Atypical TRP Channel Pharmacology in Schistosomes. *Biophys. J* 112, 406a–407a
76. Bais S et al. (2018) Atypical pharmacology of schistosome TRPA1-like ion channels. *PLoS Negl. Trop. Dis* 12, e0006495 [PubMed: 29746471]
77. Bais S et al. (2015) Evidence for Novel Pharmacological Sensitivities of Transient Receptor Potential (TRP) Channels in *Schistosoma mansoni*. *PLoS Negl. Trop. Dis* 9, e0004295 [PubMed: 26655809]
78. Arenas OM et al. (2017) Activation of planarian TRPA1 by reactive oxygen species reveals a conserved mechanism for animal nociception. *Nat. Neurosci* 20, 1686–1693 [PubMed: 29184198]
79. Schafer W (2016) Nematode nervous systems. *Curr. Biol* 26, R955–R959 [PubMed: 27780068]
80. Gang SS and Hallem EA (2016) Mechanisms of host seeking by parasitic nematodes. *Mol. Biochem. Parasitol* 208, 23–32 [PubMed: 27211240]
81. Gang SS et al. (2020) Chemosensory mechanisms of host seeking and infectivity in skin-penetrating nematodes. *Proc. Natl. Acad. Sci. U. S. A* 117, 17913–17923 [PubMed: 32651273]
82. Bryant AS et al. (2022) The neural basis of heat seeking in a human-infective parasitic worm. *Curr. Biol* DOI: 10.1016/j.cub.2022.04.010
83. Bernot JP et al. (2020) Transcriptomic analysis of hookworm *Ancylostoma ceylanicum* life cycle stages reveals changes in G-protein coupled receptor diversity associated with the onset of parasitism. *Int. J. Parasitol* DOI: 10.1016/j.ijpara.2020.05.003
84. Langeland A et al. (2021) NemChR-DB: a database of parasitic nematode chemosensory G-protein coupled receptors. *Int. J. Parasitol* 51, 333–337 [PubMed: 33275943]
85. Ghosh DD et al. (2017) Multisensory integration in *C. elegans*. *Curr. Opin. Neurobiol* 43, 110–118 [PubMed: 28273525]
86. Aoki I and Mori I (2015) Molecular biology of thermosensory transduction in *C. elegans*. *Curr. Opin. Neurobiol* 34, 117–124 [PubMed: 25840145]
87. Kang L et al. (2010) *C. elegans* TRP family protein TRP-4 is a pore-forming subunit of a native mechanotransduction channel. *Neuron* 67, 381–391 [PubMed: 20696377]

88. Kindt KS et al. (2007) Caenorhabditis elegans TRPA-1 functions in mechanosensation. *Nat. Neurosci* 10, 568–577 [PubMed: 17450139]
89. Sokolow SH et al. (2018) To reduce the global burden of human schistosomiasis, use “old fashioned” snail control. *Trends Parasitol.* 34, 23–40 [PubMed: 29126819]
90. Bockarie MJ et al. (2009) Role of vector control in the global program to eliminate lymphatic filariasis. *Annu. Rev. Entomol* 54, 469–487 [PubMed: 18798707]
91. American Heartworm Society (2020) Current Canine Guidelines for the Prevention, Diagnosis, and Management of Heartworm (*Dirofilaria immitis*) Infection in Dogs,
92. Lo NC et al. (2018) Impact and cost-effectiveness of snail control to achieve disease control targets for schistosomiasis. *Proc. Natl. Acad. Sci. U. S. A* 115, E584–E591 [PubMed: 29301964]
93. Maier T et al. (2019) Gene drives for schistosomiasis transmission control. *PLoS Negl. Trop. Dis* 13, e0007833 [PubMed: 31856157]
94. Grewelle RE et al. (2021) Modeling the efficacy of CRISPR gene drive for schistosomiasis control., *bioRxiv*, doi:10.1101/2021.10.29.466423
95. World Health Organization (2022) WHO guideline on control and elimination of human schistosomiasis, World Health Organization.
96. Liu C et al. (2020) CRISPR-mediated Transfection of *Brugia malayi*. *PLoS Negl. Trop. Dis* 14, e0008627 [PubMed: 32866158]
97. Ittiprasert W et al. (2019) Programmed genome editing of the omega-1 ribonuclease of the blood fluke, *Schistosoma mansoni*. *Elife* 8,
98. Gang SS et al. (2017) Targeted mutagenesis in a human-parasitic nematode. *PLoS Pathog.* 13, e1006675 [PubMed: 29016680]
99. Komatsu H et al. (1996) Mutations in a cyclic nucleotide-gated channel lead to abnormal thermosensation and chemosensation in *C. elegans*. *Neuron* 17, 707–718 [PubMed: 8893027]
100. Bryant AS et al. (2018) A Critical Role for Thermosensation in Host Seeking by Skin-Penetrating Nematodes. *Curr. Biol* 28, 2338–2347.e6 [PubMed: 30017486]
101. Laidemitt MR et al. (2022) Host preference of field-derived *Schistosoma mansoni* is influenced by snail host compatibility and infection status. *Ecosphere* 13,
102. Marszewska A et al. (2020) The chemotactic swimming behavior of bird schistosome miracidia in the presence of compatible and incompatible snail hosts. *PeerJ* 8, e9487 [PubMed: 32742786]
103. Albrecht DR and Bargmann CI (2011) High-content behavioral analysis of *Caenorhabditis elegans* in precise spatiotemporal chemical environments. *Nat. Methods* 8, 599–605 [PubMed: 21666667]
104. McCormick KE et al. (2011) Microfluidic devices for analysis of spatial orientation behaviors in semi-restrained *Caenorhabditis elegans*. *PLoS One* 6, e25710 [PubMed: 22022437]
105. Chavez IN et al. (2021) Skin-penetrating nematodes exhibit life-stage-specific interactions with host-associated and environmental bacteria. *BMC Biol.* 19, 221 [PubMed: 34620172]
106. McDermott-Rouse A et al. (2021) Behavioral fingerprints predict insecticide and anthelmintic mode of action. *Mol. Syst. Biol* 17, e10267 [PubMed: 34031985]
107. Barlow IL et al. (2022) Megapixel camera arrays enable high-resolution animal tracking in multiwell plates. *Communications Biology* 5, 1–13 [PubMed: 34987157]
108. Li P et al. (2021) Single-cell analysis of *Schistosoma mansoni* identifies a conserved genetic program controlling germline stem cell fate. *Nat. Commun* 12, 485 [PubMed: 33473133]
109. Wendt G et al. (2020) A single-cell RNA-seq atlas of *Schistosoma mansoni* identifies a key regulator of blood feeding. *Science* 369, 1644–1649 [PubMed: 32973030]
110. Diaz Soria CL et al. (2020) Single-cell atlas of the first intra-mammalian developmental stage of the human parasite *Schistosoma mansoni*. *Nat. Commun* 11, 6411 [PubMed: 33339816]
111. Wendt GR et al. (2021) SchistoCyte Atlas: A Single-Cell Transcriptome Resource for Adult Schistosomes. *Trends Parasitol.* 37, 585–587 [PubMed: 33975779]
112. Park S-K et al. (2019) The anthelmintic drug praziquantel activates a schistosome transient receptor potential channel. *J. Biol. Chem* 294, 18873–18880 [PubMed: 31653697]
113. Taylor SR et al. (2021) Molecular topography of an entire nervous system. *Cell* 184, 4329–4347.e23 [PubMed: 34237253]

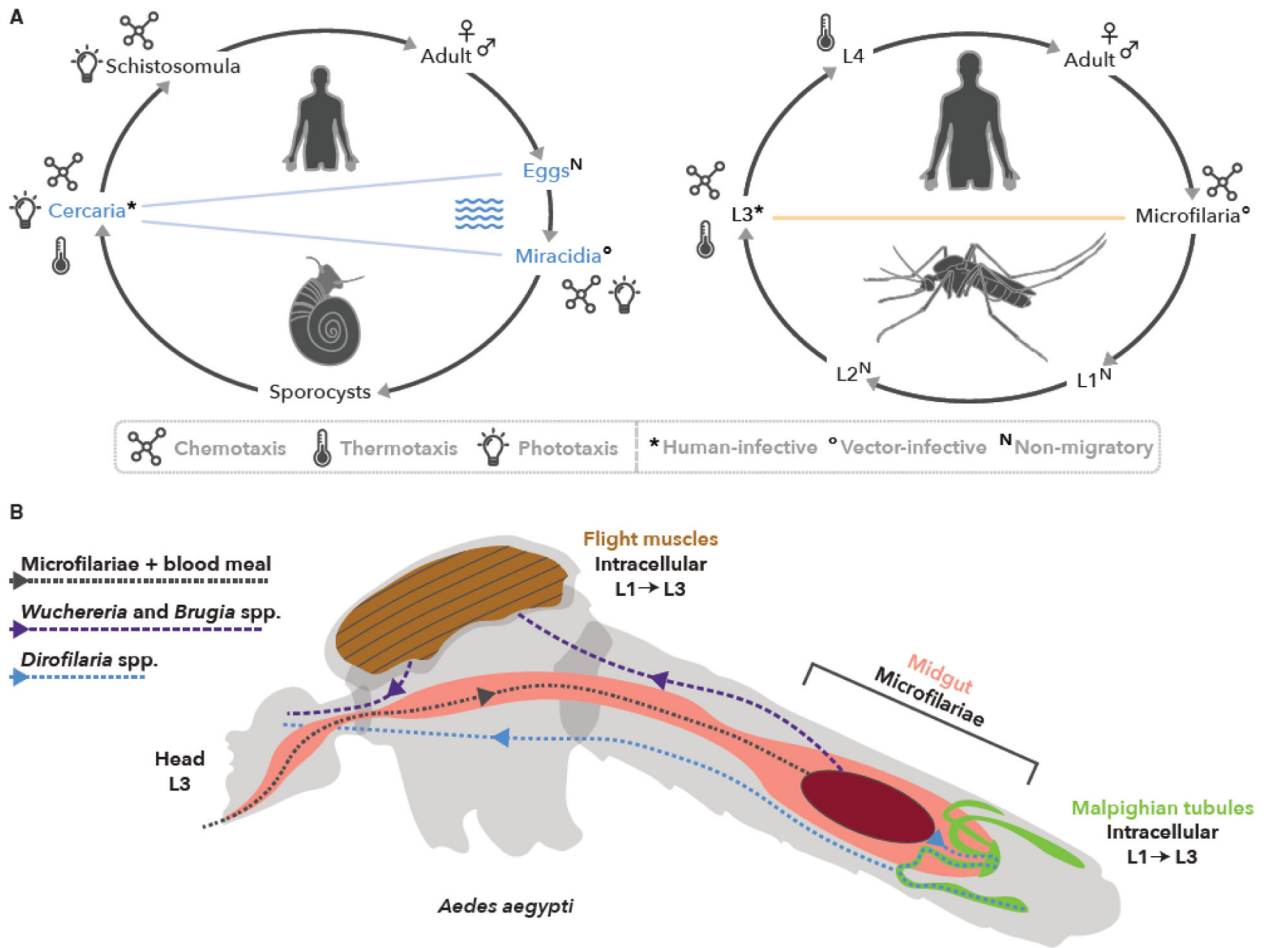
114. Airs PM et al. (2022) Spatial transcriptomics reveals antiparasitic targets associated with essential behaviors in the human parasite *Brugia malayi*. *PLoS Pathog.* 18, e1010399 [PubMed: 35390105]
115. Ashley GE et al. (2021) An expanded auxin-inducible degenon toolkit for *Caenorhabditis elegans*. *Genetics* 217,
116. McCrea AR et al. (2021) A novel assay to isolate and quantify third-stage *Dirofilaria immitis* and *Brugia malayi* larvae emerging from individual *Aedes aegypti*. *Parasit. Vectors* 14, 30 [PubMed: 33413579]
117. Cansado-Utrilla C et al. (2021) The microbiome and mosquito vectorial capacity: rich potential for discovery and translation. *Microbiome* 9, 111 [PubMed: 34006334]
118. Chen R et al. (2022) A male-derived nonribosomal peptide pheromone controls female schistosome development. *Cell* 185, 1506–1520.e17 [PubMed: 35385687]
119. Castelletto ML et al. (2020) Recent advances in functional genomics for parasitic nematodes of mammals. *J. Exp. Biol* 223.

### Outstanding Questions

- What are the molecular and neural pathways that mediate flatworm sensory behaviors?
- To which host-derived cues do filarial nematodes respond in the natural course of infection and migration?
- Can sensory assays used to study vector-borne helminths be developed to enable high-content behavioral assays that better reflect their natural environments?
- Is sensation an exploitable process for parasite control and treatment?

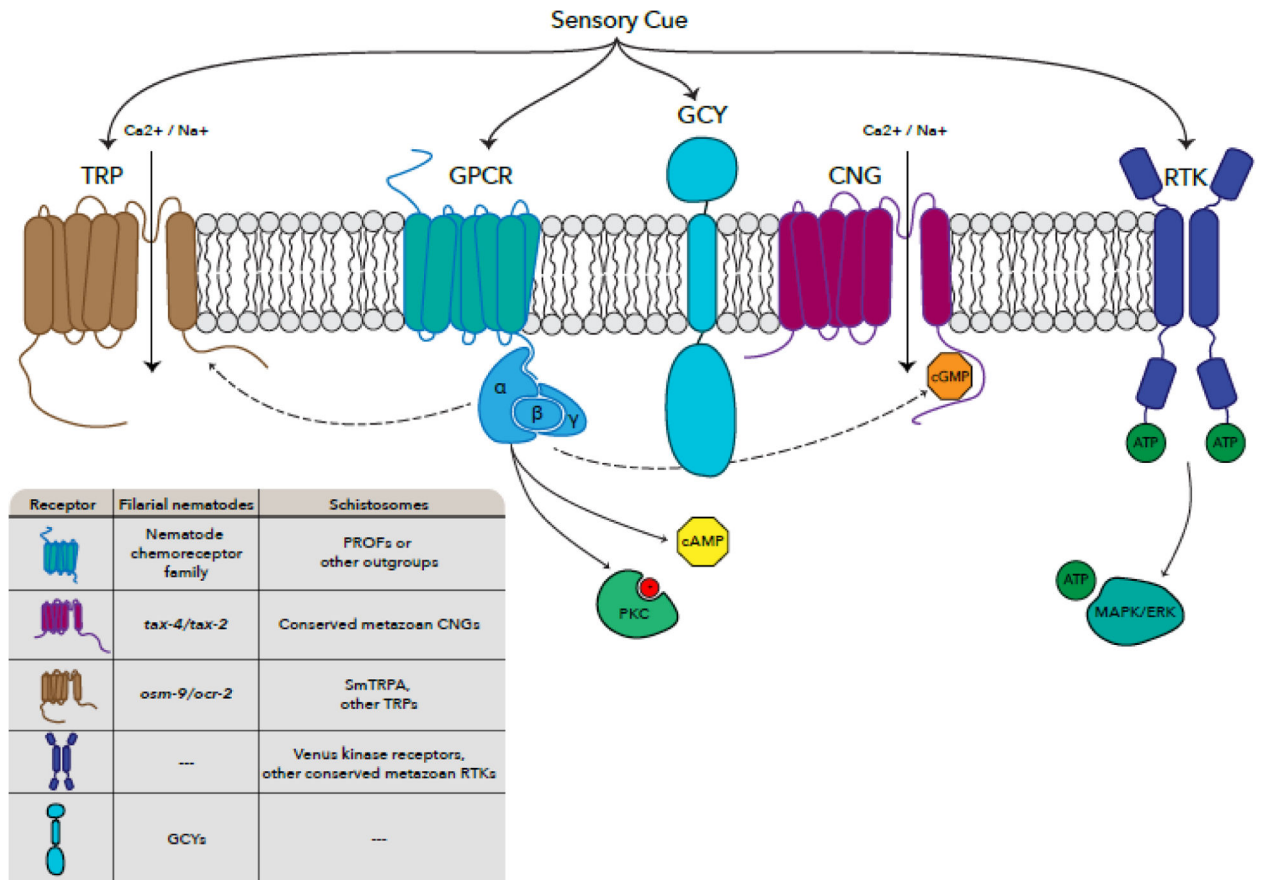
### Highlights

- Sensory behaviors are employed during parasite development and transmission.
- The sensory behaviors of schistosomes are well documented, and new phenotyping platforms promise to reveal the molecular effectors behind these behaviors.
- Sensory signal transduction pathways in parasitic nematodes have been established from free-living models, but mosquito-borne filarial nematodes have unique adaptations that enable sensory reception of host-derived cues.
- Approaches for parasite control that exploit sensory behaviors could be implemented in hotspots, or regions recalcitrant to mass drug administration.
- Recent technological advances in single-cell genomics, microfluidics, microscopy, and image processing enable more comprehensive profiling of sensory cells and tissues and the development of higher-throughput and more reproducible sensory assays.



**Figure 1. Vector-borne helminths exhibit stage-specific migratory patterns that are influenced by environmental signals.**

(A) The life cycles of human schistosomes (left) and mosquito-borne human filarial parasites (right) with non-migratory stages annotated. Environmental signals known to be sensed by each stage are symbolized. (B) Different species of mosquito-borne filarial nematodes show divergent migrations within the same mosquito host (*Aedes aegypti*), suggesting the nematodes rely on sensory-driven navigation for intra-host migration.



**Figure 2. Molecular sensory signaling pathways in vector-borne helminths.**

The pathways in nematodes are better modeled, but only the CNGs and TRPs (bold and italic) have been definitely shown to function in sensation in filarial nematodes. The sensory effectors in schistosomes are hypothetical and require experimental validation.