

UC Berkeley

UC Berkeley Previously Published Works

Title

Spin disorder control of topological spin texture

Permalink

<https://escholarship.org/uc/item/1228m774>

Journal

Nature Communications, 15(1)

ISSN

2041-1723

Authors

Zhang, Hongrui

Shao, Yu-Tsun

Chen, Xiang

et al.

Publication Date

2024

DOI

10.1038/s41467-024-47715-5

Peer reviewed

Spin disorder control of topological spin texture

Received: 24 January 2024

Accepted: 10 April 2024

Published online: 07 May 2024

 Check for updates

Hongrui Zhang ^{1,2,18} ✉, Yu-Tsun Shao ^{3,4,18}, Xiang Chen ^{2,5,6,18} ✉, Binhua Zhang ^{7,8,18}, Tianye Wang ⁵, Fanhao Meng ^{1,2}, Kun Xu ⁹, Peter Meisenheimer ¹, Xianzhe Chen ^{1,2}, Xiaoxi Huang¹, Piush Behera¹, Sajid Husain ^{1,2}, Tiancong Zhu ^{2,5}, Hao Pan ¹, Yanli Jia¹, Nick Settineri², Nathan Giles-Donovan⁵, Zehao He ^{2,5}, Andreas Scholl¹⁰, Alpha N'Diaye ¹⁰, Padraic Shafer ¹⁰, Archana Raja ¹¹, Changsong Xu ^{7,8} ✉, Lane W. Martin ^{1,2,12,13,14,15}, Michael F. Crommie ^{2,5}, Jie Yao ^{1,2}, Ziqiang Qiu ⁵, Arun Majumdar ⁹, Laurent Bellaiche ¹⁶, David A. Muller ^{4,17}, Robert J. Birgeneau ^{2,5} & Ramamoorthy Ramesh ^{1,2,5,12,14,15} ✉

Stabilization of topological spin textures in layered magnets has the potential to drive the development of advanced low-dimensional spintronics devices. However, achieving reliable and flexible manipulation of the topological spin textures beyond skyrmion in a two-dimensional magnet system remains challenging. Here, we demonstrate the introduction of magnetic iron atoms between the van der Waals gap of a layered magnet, Fe₃GaTe₂, to modify local anisotropic magnetic interactions. Consequently, we present direct observations of the order-disorder skyrmion lattices transition. In addition, non-trivial topological solitons, such as skyrmioniums and skyrmion bags, are realized at room temperature. Our work highlights the influence of random spin control of non-trivial topological spin textures.

Spin textures in magnetic materials result from the competition of magnetic exchange interaction, magnetic anisotropy, Dzyaloshinskii-Moriya interaction (DMI), and dipolar interaction¹⁻⁴. The spin Hamiltonian in a perpendicular magnetic anisotropy (PMA) system can be approximated as:

$$H = -J \sum_{n,n'} \vec{s}_i \cdot \vec{s}_j - K_{\perp} \sum_i s_{iz}^2 + \sum_{n,n'} \vec{D}_{ij} \cdot (\vec{s}_i \times \vec{s}_j) + \Omega \sum_{\langle i,j \rangle} \left(\frac{\vec{s}_i \cdot \vec{s}_j - 3(\vec{s}_i \cdot \vec{r}_{ij})(\vec{s}_j \cdot \vec{r}_{ij})}{|\vec{r}_{ij}|^3} \right) \quad (1)$$

where J is the coefficient of exchange coupling, K_{\perp} is the coefficient of perpendicular uniaxial anisotropy, D_{ij} is the local vector of DMI, Ω is the coefficient of magnetic dipole-dipole interaction. \vec{r}_{ij} is the position vector from i_{th} atom to j_{th} atom, and \vec{r}_{ij} is the unit vector along \vec{r}_{ij} . Spin textures such as skyrmions can be formed under a set of interaction parameters^{1,2}. For example, through symmetry design in magnetic crystals or stacking configurations in magnetic multilayer films, DMI can be established, leading to the formation of ordered Bloch-type skyrmions^{5,6}, Néel-type skyrmions^{7,8}, and even antiskyrmions^{9,10}. Compared to conventional skyrmions ($Q = \frac{1}{4\pi} \int M \cdot (\partial_x M \times \partial_y M) dx dy$, where Q is the topological number and M is the unit vector in the direction of the local magnetization, $Q=1$), designing new types of topological spin textures ($Q \neq 1$) remains challenging with only current global parameter tuning. This limitation impedes the development of topological spin texture-based spintronic devices.

A full list of affiliations appears at the end of the paper. ✉ e-mail: hongruizhang@berkeley.edu; chenx889@mail.sysu.edu.cn; csxu@fudan.edu.cn; ramesh@berkeley.edu

Theory and simulations suggest that the introduction of random disorder or frustration, leading to complex competition among various isotropic or anisotropic magnetic interactions with different energy scales, could potentially give rise to exotic topological spin textures beyond skyrmions^{11–17}. As in relaxor ferroelectrics, the compositional inhomogeneity can be explicitly mapped into the three-dimensional (3D) Heisenberg model with cubic anisotropy in the presence of random electric fields¹⁸. This model is intrinsically unstable with the random local dipolar fields driving the system to breakup into nanodomains. Designing such nanodomains can give rise to extraordinary dielectric susceptibilities, energy storage, and piezoelectric performances^{19–21}. These examples provide us with an illumination that the control of nano-magnetic domains may be achieved through the introduction of inhomogeneous spins, which can be employed to induce local anisotropic magnetic interaction in the system^{22–24}. The Hamiltonian account for the contribution from the random spins can be written as:

$$\Delta H = \sum_i \vec{\phi}_i \cdot \vec{s}_i + \sum_i \psi_i \left(\vec{s}_i \cdot \hat{u}_i \right)^2 + \sum_{n.n.} \vec{D}'_{ij} \cdot \left(\vec{s}_i \times \vec{s}_j \right) \quad (2)$$

where the first term is a linear random field term, and the second term is a second-order random anisotropy term. $\vec{\phi}_i$ is the on-site random field, \hat{u}_i is the unit vector of on-site random uniaxial anisotropy. ψ_i is the strength of the on-site random anisotropy. The third term is a second-order random DMI term. \vec{D}'_{ij} is the random local DMI vector. The introduction of these energy terms allows for random non-collinear spins, potentially favoring the stabilization of unique spin textures. Here, we demonstrate that the intercalation of spin-active species into a two-dimensional (2D) magnetic framework is a practical pathway to create an inhomogeneous spin distribution, which facilitates the coexistence of ordered/disordered magnetic domains and skyrmion lattices. Importantly, these intercalated random spins can assist the formation of rare topological solitons, such as skyrmioniums and skyrmion bags, even at room temperature.

Results

2D magnets with intercalated random spins

Fe_3GeTe_2 is a well-known layered ferromagnet with a strong PMA^{25,26} that hosts topological spin textures^{27–32}. The intercalated iron atoms (Fe^{int}) between the vdW gaps were reported in this system, albeit the total iron concentration is typically lower than its stoichiometric number^{32,33}. The Fe_3GaTe_2 compound was regarded to have a similar crystal structure but possesses a higher Curie temperature (T_c) than Fe_3GeTe_2 ^{34,35}. Each unit cell of Fe_3GaTe_2 has AA' stacked two sublayers (Fig. 1a), which consists of a Fe_3Ga layer sandwiched by two tellurium layers in each sublayer. The iron atoms within the sublayer occupy two inequivalent Wyckoff positions, labeled as Fe^{top} (Fe^{bot}) and Fe^{mid} . Fe^{int} is located at the octahedral intercalated sites within the vdW gaps. Here, we focus on the model system, Fe_3GaTe_2 , and use Co-substituted Fe_5GeTe_2 without any measurable Fe^{int} and Fe_3GeTe_2 with intercalated Fe^{int} as references.

High-quality Fe_3GaTe_2 single crystals with several Fe^{int} concentrations were synthesized via a self-flux method. (see Methods) The element ratios were investigated via energy-dispersive X-ray spectroscopy. The iron ratio in Fe_3GaTe_2 can exceed 3, and excess iron atoms are considered as Fe^{int} atoms. The single-crystal X-ray diffraction (XRD) data determined the crystal structure of Fe_3GaTe_2 and revealed the existence of Fe^{int} between the vdW gap. (Supplementary Fig. 1) Atomic-resolution, integrated differential phase contrast (iDPC)-scanning transmission electron microscopy (STEM) imaging was performed on cross-sectioned samples (Fig. 1b), directly confirming the atomic structure model obtained by the single-crystal XRD measurement. The Fe^{int} atoms were randomly distributed within the vdW gap in Fe_3GaTe_2

with two different intercalation levels: 8.5% (Fig. 1c) and 65.3% Fe^{int} (Fig. 1d). The peak intensities of Fe^{top} , Fe^{bot} , and Fe^{int} in the iDPC-STEM image (Fig. 1c) are quantitatively analyzed. The intensity line profile of the Fe^{bot} (Fe^{top}) site indicates its uniform distribution (green or blue line, Fig. 1e). On the contrary, the non-uniform and low-intensity line profile of the Fe^{int} site (brown line, Fig. 1e) suggests a partial, random occupation of Fe^{int} . (Supplementary Fig. 2) Thus, both the single-crystal XRD and STEM measurements clearly demonstrate the existence of the randomly self-intercalated Fe^{int} in Fe_3GaTe_2 .

The random intercalation of Fe^{int} pronouncedly affects the macroscopic magnetic properties in Fe_3GaTe_2 , as evidenced by the macroscopic magnetization and magneto-transport measurements. Firstly, Fe_3GaTe_2 with Fe^{int} manifests a ferromagnetic state with an enhanced T_c above room temperature. (Supplementary Figs. 3–5) Further, the disordered spins induce a bifurcation between the zero-field cooling (ZFC) and field cooling (FC) magnetization-temperature (M-T) curves (Fig. 1f) with a spin-freezing temperature (T_f)²². As a comparison, faint bifurcation is observed in $\text{Fe}_{2.5}\text{Co}_{2.5}\text{GeTe}_2$ without Fe^{int} . (Supplementary Fig. 3) It is worth noting that both in-plane and out-of-plane M-T curves for the Fe_3GaTe_2 exhibit additional kink-like features at T_f (Supplementary Fig. 3), which are likely the results of antiferromagnetically coupled, disordered spins. This picture is supported by the observation of a spin-flop transition and the exchange-bias behavior in the low-temperature magneto-transport measurements. (Supplementary Figs. 4,6) Interestingly, the virgin anomalous Hall curves for the Fe_3GaTe_2 with Fe^{int} after ZFC lie outside the primary hysteresis loops (Fig. 1g and Supplementary Fig. 7). A stronger magnetic field is required to align the frozen antiferromagnetic coupling implies the existence of strong pinning effect in the system. Lastly, the T_c of Fe_3GaTe_2 with Fe^{int} systems increases as the Fe^{int} concentration increases (Fig. 1h), similar to the Fe_3GeTe_2 with Fe^{int} system³³; T_f also follows the same trend. (Fig. 1i and Supplementary Fig. 7) Therefore, from the above structural and macroscopic magnetic characterization, Fe^{int} can introduce disordered spins into the system and modify the magnetic couplings, altering the magnetic properties, such as the magnetic transition temperatures.

Microscopic picture of disordered spins

To understand the nature of the disordered spins in Fe_3GaTe_2 , we performed density-functional theory (DFT) calculations (see Methods) with a tunable level of Fe^{int} -site occupancy. We analyzed the magnetic couplings between the iron atoms and between sublayers separately. As expected, a strong ferromagnetic coupling is preferred among the nearest neighbor iron atoms within the Fe_3Ga sublayer. (Supplementary Fig. 8) However, the third-nearest neighbor interaction ($\text{Fe}^{\text{mid}}\text{-Fe}^{\text{mid}}$ within the layer) favors an antiferromagnetic coupling with $J^{\text{mm}} = 4.3$ meV in Fe_3GaTe_2 without Fe^{int} . Once Fe^{int} is introduced, J^{mm} increases to 7.93 meV. Furthermore, the $\text{Fe}^{\text{int}}\text{-Fe}^{\text{int}}$ interaction favors a stronger antiferromagnetic coupling with $J^{\text{ii}} = 17.3$ meV. These antiferromagnetically coupled iron atoms are located in triangle lattices, inducing spin frustration. On the other hand, quantitatively, the ground-state energies of the representative magnetic states with out-of-plane spins, namely, interlayer ferromagnetic and antiferromagnetic coupled states, are calculated as a function of the Fe^{int} concentration. The DFT calculation shows that the ferromagnetic order is preferred regardless of the Fe^{int} concentration from 0% (i.e., Fe_3GaTe_2) to 100% (i.e., Fe_4GaTe_2) (Supplementary Fig. 8); however, at low concentration levels (e.g. 8.5% Fe^{int} in Fe_3GaTe_2), the ground-state energies of the representative magnetic states are close and accessible due to the relatively small energy barriers (<10 meV/Fe) (Supplementary Fig. 8). Considering that the system cools down from above T_c , thermal fluctuations might be sufficient to overcome the energy barrier(s) to access the less-favored antiferromagnetic states. (Supplementary Note 1 and Supplementary Figs. 9–13) A corresponding Monte Carlo simulation supports the coexistence of antiferromagnetic and

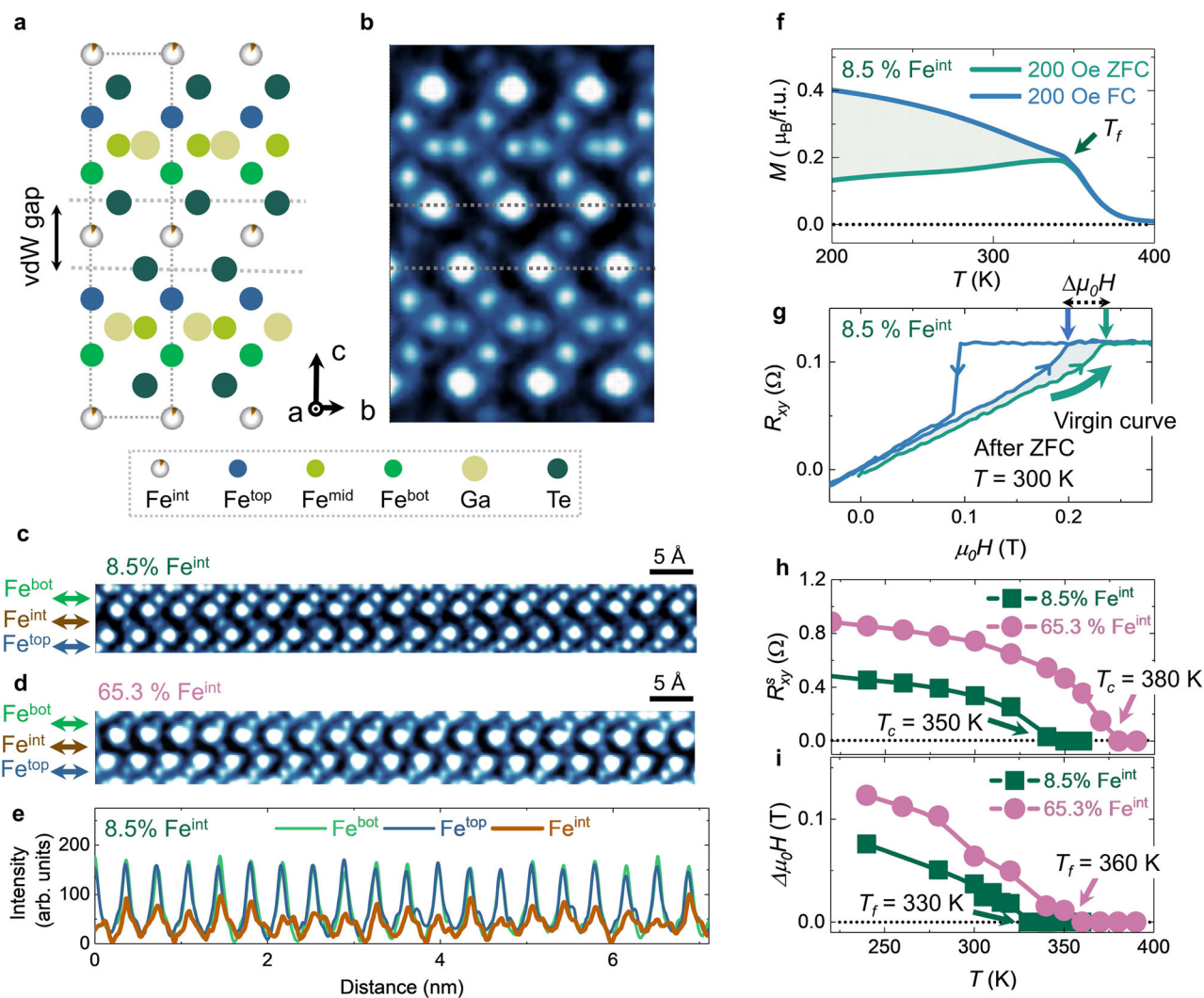


Fig. 1 | Structural and magnetic characterization of Fe_3GaTe_2 with Fe^{int} . **a** Side view of the atomic structural schematic image of Fe_3GaTe_2 with Fe^{int} . The Fe^{int} and tellurium layers can be treated as a hexagonal FeTe_2 -type structure. The Fe^{int} atoms occupy the octahedral intercalated sites. **b** Atomic resolution cross-section iDPC-STEM image of Fe_3GaTe_2 with Fe^{int} . The atomic resolution cross-section iDPC-STEM image of vdWs gap for Fe_3GaTe_2 with 8.5% (**c**) and 65.3% (**d**) Fe^{int} . **e** Intensity line profiles of the Fe^{bot} , Fe^{int} , and Fe^{top} atoms in Fig. 1c are shown in green, brown, and blue curves, respectively. The Fe^{bot} and Fe^{top} profiles are nearly uniform, while the

Fe^{int} is non-uniform. **f** M-T curves were measured after zero-field cooling (ZFC) and field cooling (FC). The dark green arrow marks the spin-freezing temperature (T_f). **g** The anomalous Hall curve for the Fe_3GaTe_2 nanoflake with 8.5% Fe^{int} is measured at room temperature after ZFC. The dark blue curve refers to the virgin curve. Temperature dependence of saturated anomalous Hall resistance (R_{xy}^s , **h**) and delta saturated field ($\Delta\mu_0 H$, **i**) were measured for Fe_3GaTe_2 nanoflakes with 8.5% and 65.3% Fe^{int} concentrations.

ferromagnetic phases below T_f (Supplementary Fig. 14) Thus, the spins of iron can be antiferromagnetically coupled both between the sublayers and between Fe^{int} atoms below T_f , introducing random disorder and frustration to the system.

Imaging the effect of disordered spins

One direct impact of the disordered spins of Fe^{int} on the system is reflected on the magnetic domains, which can be imaged by conducting magnetic force microscopy (MFM) measurements (see Methods) on the Fe_3GaTe_2 nanoflakes with various Fe^{int} concentrations at room temperature after ZFC. As a reference, $\text{Fe}_{2.5}\text{Co}_{2.5}\text{GeTe}_2$ nanoflake (with no Fe^{int}) exhibits stripe domains in these measurements (Fig. 2a), with an approximately uniform wavevector of the magnetic modulation (q -vector). In contrast, disordered magnetic domains are observed in Fe_3GaTe_2 with the introduction of Fe^{int} . Specifically, in Fe_3GaTe_2 nanoflakes with 5.0% (Fig. 2b) and 8.5% (Fig. 2c and Supplementary Fig. 15) Fe^{int} , numerous dislocations are surrounded by stripes with different q -vector directions. As the Fe^{int} concentration reaches up

to 65.3% Fe^{int} (Fig. 2d and Supplementary Fig. 15), the domain pattern exhibits a complex labyrinthine domain without any stripe domains. These results indicate that the disorder spins can directly cause increased magnetic domain chaos. Such experimental observation can be closely reproduced by the micromagnetic simulation (see Fig. 2e–g, supplementary Fig. 16 and Methods). The random magnetic anisotropy of various densities is introduced into the system, and then the evolution of the magnetic domain is simulated as the temperature cools down from near T_c , exactly following the experimental process. As the fraction of defects increases, the magnetic domain pattern transitions from stripe domains (Fig. 2e) to complex labyrinthine domains (Fig. 2g). At a defect density of 20%, the system exhibits the formation of various domain patterns, including bubble, target, ring-shaped, and net-shaped domains (Fig. 2g).

Noticeably, there is another feature in the Fe^{int} concentration evolution of the domain structure, namely, the MFM contrast in Fe_3GaTe_2 with lower Fe^{int} concentrations is non-uniform. In comparison, a uniform contrast is recorded in the nanoflakes with 65.3% Fe^{int}

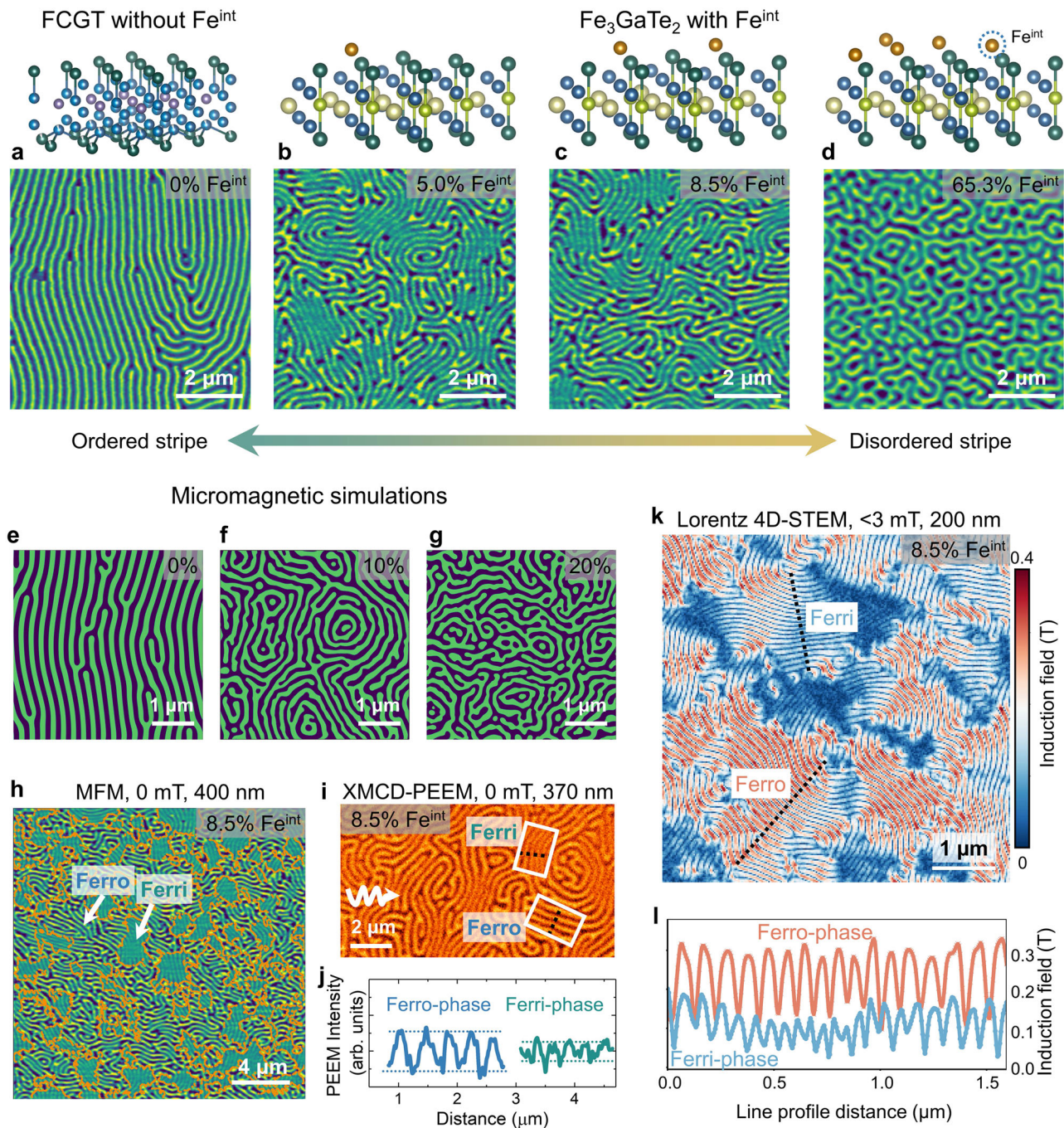


Fig. 2 | Imaging the effect of disordered spins at room temperature. The MFM images of the $\text{Fe}_{2.5}\text{Co}_{2.5}\text{GeTe}_2$ without Fe^{int} (a) and Fe_3GaTe_2 with various Fe^{int} concentrations (b, 5.0%, c, 8.5%, and d, 65.3%) nanoflakes were measured at room temperature after ZFC. The thickness of the nanoflakes here is 200–400 nm. The up panels display the schematic images of Fe^{int} concentrations. e–g Simulated magnetic domain images as the density of random anisotropy increases. (Supplementary Fig. 16). h The MFM image of a 400-nm-thick nanoflake at room temperature under zero field shows two different regions with strong (Ferro-phase) and weak (Ferri-phase) frequency contrasts, demonstrating the micrometer-scale phase separation. The orange lines denote the phase boundaries between the Ferro-phase and Ferri-phase. i The XMCD-PEEM image of the magnetic domains for

a 370 nm thick flake at room temperature. The white arrow represents the projection of the 60° off-normal incident direction of the X-ray. j The line profiles across two-phase regions in the PEEM image in the white box in Fig. 2i. k The 4D-LSTEM mapping of a 200-nm-thick Fe_3GaTe_2 with 8.5% Fe^{int} nanoflake shows the details of the induction field around the spin textures collected at room temperature under zero field. l Line profiles of the two-phase regions in the 4D-LSTEM image along the black dotted lines in Fig. 2k. The induction fields of the Ferro-phase (dark red) and Ferri-phase (light blue) regions are about 0.3 T and 0.15 T, respectively. Notably, since the 4D-LSTEM technique is only sensitive to the domain walls, the periodicity of the line profiles is doubled compared to that of the MFM and XMCD-PEEM images.

concentration. For example, the non-uniform contrast is more apparent in the MFM image of a 400 nm nanoflake of Fe_3GaTe_2 with 8.5% Fe^{int} (Fig. 2h), where there is an intricate pattern consisting of two distinctly contrasting regions: a stripe domain region with weaker contrast and a brighter domain region with numerous magnetic stripe

dislocations. The antiferromagnetic domains that can be accessible in the lower Fe^{int} concentration system based on the DFT calculations do not contribute to the intensity in MFM images. Consequently, the weak contrast regions (Fig. 2h) can be assumed to be the consequence of the coexistence of interlayer antiferromagnetism with a ferromagnetic

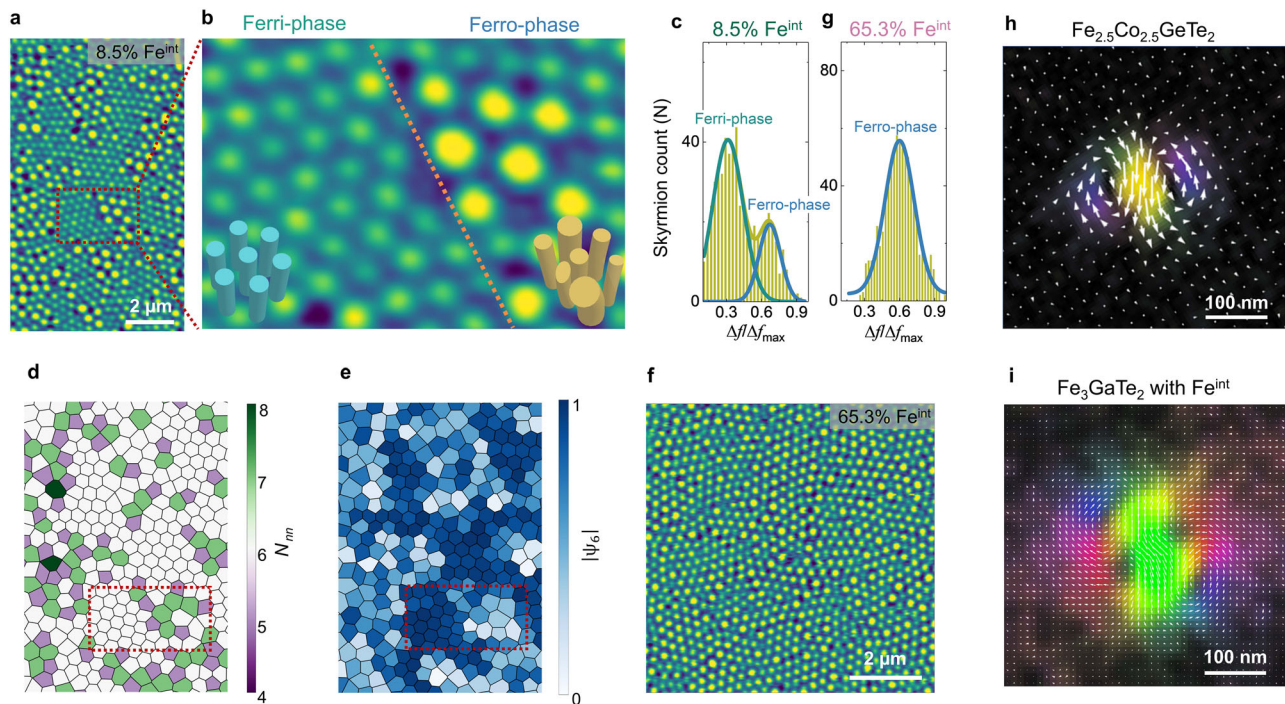


Fig. 3 | Skyrmion ordering. **a** The MFM image of a Fe_3GaTe_2 with 8.5% Fe^{int} nanoflake at room temperature and zero field exhibits two distinct skyrmion lattices. **b** Zoom in on the dark red box in Fig. 3a. The orange dotted line denotes the skyrmionic phase boundary. The contrast frequency shift of the disordered skyrmion lattice (Ferro-phase) is typically higher than that of the ordered skyrmions (Ferri-phase). Also, the disordered skyrmion size is non-uniform compared to the relatively uniform size of the ordered skyrmions. **c** Statistical histogram of skyrmion counts as a function of the contrast frequency shift in Fig. 3a. The dark yellow curve is the overall fit of the Gaussian function in Fig. 3c. The high-frequency contrast range (blue curve) refers to the Ferro-phase, while the low-frequency contrast range (dark green curve) corresponds to the Ferri-phase. **d**, **e** Nearest neighbor (N_{nn}) and bond orientational ($|\psi_6|$) maps of the zoom in Fig. 3a. Statistical

analysis was conducted following the same methodology as in the previous reference⁴⁰. **f** The MFM image of a Fe_3GaTe_2 with 65.3% Fe^{int} nanoflake at room temperature and zero field shows a disordered skyrmion lattice. **g** Statistical histogram of skyrmion counts as a function of the contrast frequency shift in Fig. 3f. Only one peak fits the curve well, indicating single-phase skyrmions. **h** The induction field mapping of a typical ordered Néel-type skyrmion, observed in $\text{Fe}_{2.5}\text{Co}_{2.5}\text{GeTe}_2$ (190 nm) with a global breaking inversion symmetry at room temperature, is composed of clockwise and counterclockwise spin curl. **i** The induction field mapping of a disordered skyrmion in a 200-nm-thick Fe_3GaTe_2 with 8.5% Fe^{int} nanoflake at room temperature displays a more complex feature, likely reflecting a 3D spin texture.

background (labeled as Ferri-phase), while the strong contrast regions (Fig. 2h) correspond to the predominant ferromagnetic domains without antiferromagnetically coupled spin domains (labeled as Ferro-phase).

A similar pattern with distinct contrast is also observed in surface sensitive (~5 nm) X-Ray Magnetic Circular Dichroism-photoemission electron microscopy (XMCD-PEEM, see Methods) image for a Fe_3GaTe_2 with 8.5% Fe^{int} nanoflake (Fig. 2i). Under identical imaging conditions, the intensity of the Ferro-phase is about 2X higher than that of the Ferri-phase, as presented in the line profile in Fig. 2j. To further quantitatively map the magnetic induction fields of two phases in Fe_3GaTe_2 with 8.5% Fe^{int} , we employed four-dimensional (4D) Lorentz-STEM (LSTEM) coupled with an electron microscopy pixel array detector (EMPAD; see Methods)^{36,37}. The magnetic induction field can be derived by quantitatively measuring the deflection angles of the electron beam in each diffraction pattern. The results show the absolute magnitude of the magnetic induction fields (Fig. 2k), which clearly exhibit two regions of distinct contrast. The induction fields around the spin textures in the Ferro- and Ferri-phases (Fig. 2l) are ~0.3 T and ~0.15 T, respectively, as guided by the line profiles along the black dotted lines (Fig. 2k). It is worth mentioning that similar behavior is also observed in Fe_3GeTe_2 nanoflakes with 6.7% Fe^{int} . (Supplementary Fig. 17) Thus, both bulk- and surface-sensitive probes, including MFM, XMCD-PEEM, and 4D-LSTEM real-space imaging techniques, directly corroborate the coexistence of two-phase magnetic domains in Fe_3GaTe_2 nanoflakes with a lightly intercalated Fe^{int} .

Formation of ordered/disordered skyrmion lattices

Having established the formation of different magnetic domains through random spins, we further explored the stabilization of topological skyrmion lattices based on the order/disorder magnetic domain. Zero-field skyrmions in nanoflakes were stabilized at room temperature using the local stray fields generated by the MFM tip^{38,39}. (Supplementary Fig. 18) A triangle-ordered Néel-type skyrmion lattice can be stabilized in the $\text{Fe}_{2.5}\text{Co}_{2.5}\text{GeTe}_2$ nanoflake⁴⁰. Interestingly, a distinct contrast of the skyrmion lattices in the Fe_3GaTe_2 nanoflakes with 8.5% Fe^{int} is present (Fig. 3a,b), corresponding to magnetic domain-phase separation (Fig. 2h). Due to the weaker stray field of the Ferri-phase, its skyrmions are smaller than those of the Ferro-phase³. We present a statistical analysis of the MFM image (Fig. 3a) wherein two distinct regimes are identified by carrying out a Gaussian fitting of the image intensity distribution (Fig. 3c), corresponding to the Ferri- and Ferro-phase skyrmions. In the Ferri-phase regions, the number of nearest neighbors (N_{nn}) is approximately 6 in Fig. 3d, and the bond orientational parameter ($|\psi_6|$) is close to 1 in Fig. 3e, indicating a solid-phase skyrmion lattice⁴⁰. In contrast, the presence of numerous 5-7 pairs caused by the stripe dislocations and the $|\psi_6|$ parameter significantly below 1 suggests a liquid-phase skyrmion lattice in the Ferro-phase regions. Similarly, a single Ferro-phase skyrmion lattice in the Fe_3GaTe_2 nanoflake with 65.3% Fe^{int} (Fig. 3f), confirmed by Gaussian fitting of the image intensity distribution (Fig. 3g), shows no long-range ordering of skyrmions.

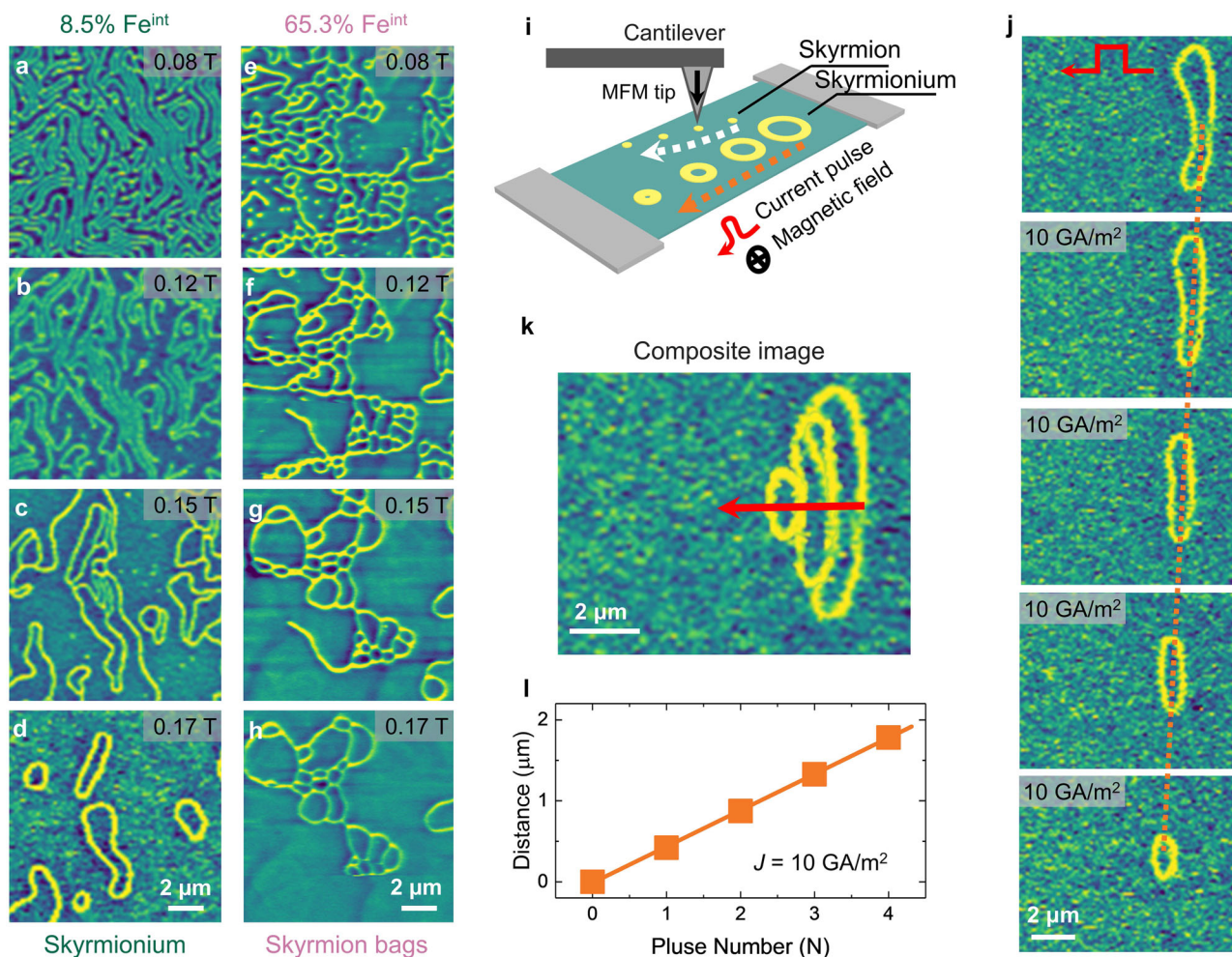


Fig. 4 | Manipulation of topological number and skyrmionium dynamics. The magnetic field dependence of MFM images for the Fe_3GaTe_2 nanoflakes with 8.5% Fe^{int} (a–d) and 65.3% Fe^{int} (e–h) were obtained at room temperature. The MFM contrast in Fig. a becomes uniform under the magnetic field in panels b–d, indicating that the antiferromagnetic domains transition into the ferromagnetic domains. i, Schematics of current-induced skyrmion and skyrmionium motion. j Sequential MFM images showing skyrmionium displacement after

injecting 1 current pulse with 10 GA/m^2 amplitude. The orange dashed lines are included as visual guides of skyrmionium motion. k Skyrmionium trajectories of the current-induced motion. The red arrows refer to the motion direction, which is along the current pulse direction. l The current pulse-dependent motion distance indicates the velocity of the skyrmionium is -0.42 m/s at room temperature under a current density of 10 GA/m^2 .

The character of the domain wall in the Fe_3GaTe_2 with Fe^{int} system remains of the Néel-type (Supplementary Fig. 19), similar to the $\text{Fe}_{2.5}\text{Co}_{2.5}\text{GeTe}_2$ without Fe^{int} ^{39,41}. The skyrmion contrast in the LSTEM/MFM image cannot distinguish any difference between $\text{Fe}_{2.5}\text{Co}_{2.5}\text{GeTe}_2$ and Fe_3GaTe_2 nanoflakes with Fe^{int} . To investigate the impact of random spins on the ordering of the skyrmion lattice, the magnetic induction fields of these skyrmions were studied using 4D-LSTEM coupled with an EMPAD. (see Methods) The induction field around a model Néel-type skyrmion tube in $\text{Fe}_{2.5}\text{Co}_{2.5}\text{GeTe}_2$ with a broken crystallographic inversion symmetry is composed of both clockwise and counterclockwise curls (Fig. 3h). Remarkably, the detailed curling of the induction field around a Ferro-phase skyrmion in Fe_3GaTe_2 with 8.5% Fe^{int} (Fig. 3i) exhibits more complex features. It does not resemble that of a simple 2D Néel-type skyrmion tube structure or a skyrmion with a higher topological number as theoretically predicted in Fe_3GeTe_2 ⁴² and other frustrated system^{14,43}. This discrepancy is resolved if the disordered skyrmion observed is considered to be a 3D twisted/bent spin texture^{44–46}. Thus, the random repulsive interactions among non-uniform distorted skyrmions disrupt the densest hexagonal packing, resulting in a disordered skyrmion lattice.

Stabilization of skyrmionium and skyrmion ‘bags’

Applying a global magnetic field can further amplify the effect of the disordered spins on the system, as monitored by the magnetic field-dependent MFM measurements conducted at room temperature in the Fe_3GaTe_2 nanoflake with 8.5% Fe^{int} (Fig. 4a–d) and 65.3% Fe^{int} (Fig. 4e–h). As the out-of-plane magnetic field increases, in the Fe_3GaTe_2 nanoflake 8.5% Fe^{int} , the contrast of the MFM image becomes uniform, as depicted in Fig. 4a, b and Supplementary Fig. 20. Then, the stripe domains reverse one by one due to the strong perpendicular anisotropy energy [Supplementary Fig. 3, $K_u(T=300 \text{ K}) = 4.0 \times 10^5 \text{ J/m}^3$] of Fe_3GaTe_2 at room temperature. The $\text{Fe}_{2.5}\text{Co}_{2.5}\text{GeTe}_2$ system [$K_u(T=300 \text{ K}) = 2.4 \times 10^5 \text{ J/m}^3$, $K_u(T) - M_S^3(T)$] also shows similar behavior at low temperatures³⁹. Intriguingly, the ring-shaped dislocations, composed of two opposite directions of edge dislocations, transform into isolated skyrmioniums ($Q=0$) (Fig. 4d). The size of the skyrmioniums is on the order of micrometers. Finally, the skyrmioniums shrink, collapse, and then transition into a ferromagnetic state. Other edge dislocations and short stripe domains either shrink to skyrmions ($Q=\pm 1$) or disappear (Fig. 4c, d). In the Fe_3GaTe_2 nanoflake with 65.3% Fe^{int} , high-density edge dislocations intersect to stabilize a net-shaped domain instead

of a ring-shaped domain (Fig. 4e). Such net-shaped domain can be regarded as the composition of an outer skyrmion and an arbitrary number of inner skyrmions, i.e., skyrmion ‘bags’. The number of the inner skyrmions (S) determines the topological number [$Q = \pm (S-1)$]. As the magnetic field increases, some of the inner skyrmions melt, resulting in a reduction of the topological number. When the magnetic field reaches the saturation field, the system transitions into a single-domain state. Thus, in Fe_3GaTe_2 with Fe^{int} system, the density of edge dislocations fundamentally determines the formation of isolated skyrmion, skyrmionium, or skyrmion ‘bags’, leading to the manipulation of various topological numbers. Under a moderate magnetic field, due to the strong pinning effect facilitated by the introduced random disorder, these non-trivial topological spin textures are more likely to exist and survive. In comparison, in the $\text{Fe}_{2.5}\text{Co}_{2.5}\text{GeTe}_2$ without Fe^{int} system, only a few isolated skyrmions survive at low temperatures in the initial magnetization process³⁹, possibly originating from the smaller pinning effect from some structural defects/disorder.

Skyrmionium dynamics

The non-trivial topological spin textures, such as skyrmioniums, have their unique characteristics and the potential for racetrack memory applications^{47–52}. It is well known that the lateral motion of a magnetic skyrmion driven by pulse current (Supplementary Fig. 21), caused by the skyrmion Hall effect^{53–55}, imposes severe limitations on the practical use in racetrack memory applications⁵⁶. Encouragingly, skyrmionium can move without the skyrmion Hall effect by the pulse current due to the opposite Magnus forces acting on the skyrmion components with $Q = +1$ and $Q = -1$. To verify this, we performed the current-induced skyrmionium motion at room temperature. The experimental image is illustrated (Fig. 4i). An external magnetic field (-0.194 T) was applied to a 195 nm thick nanoflake to stabilize an individual skyrmionium (Fig. 4j). Each image was acquired after injecting one current pulse with a current density of 10 GA/m^2 and a duration of 1 ms. As expected, the skyrmionium measurably moves forward without deflection (Fig. 4j, k). Meanwhile, it shrinks as the pulse number increases, possibly due to the decrease in domain wall energy caused by thermal or spin-orbit torque effects. The threshold current density for the skyrmionium motion is smaller than that of the skyrmion (Supplementary Fig. 21), aligning with the findings of the micromagnetic simulation^{15,57}. The distance moved after each pulse current is uniform (Fig. 4l). The calculated velocity of the skyrmionium at room temperature is -0.42 mm/s under a current density of 10 GA/m^2 .

Discussion

As in classical ferromagnets, the domain pattern arises from the competition between short-range magnetic and long-range dipolar interactions^{1,3}. The intercalated magnetic Fe^{int} can introduce random local magnetic interactions, e.g., the pinning effect, which was simulated by a random local magnetic anisotropy. (Fig. 2e–g and Supplementary Fig. 16) These intercalated spins can result in stripe dislocations and labyrinthine domains as the temperature decreases from T_c . In the Ferro-phase state, the number of stripe dislocations increases with the concentration of Fe^{int} . However, in the Ferri-phase state, due to the lower magnetic dipole-dipole interaction, the domain wall energy dominates, and it remains stripe domains. (Supplementary Note 2).

Although the crystal structure of Fe_3GaTe_2 with/without Fe^{int} has a centrosymmetric space group ($P6_3/mmc$) and, thus, in principle, should not exhibit a global DMI. (Supplementary Fig. 22) The existence of a surface oxidized layer²⁹ or inhomogeneous Fe^{mid} ³² might lead to a global DMI, resulting in a Néel-type character of the domain wall. In addition, the random disorder through intercalation in vdW magnets promotes the formation of phase-separated magnetic domains. By applying the stray field of MFM tips, the stripe domain region forms an ordered skyrmion lattice, and the labyrinthine domain region forms a

disordered skyrmion lattice. Furthermore, the ring- or net-shaped domains host a lower barrier energy due to the strong pinning effect, which can be regarded as the seed of the various intriguing topological spin textures. The strong PMA of Fe_3GaTe_2 at room temperature allows the stripe domain to reverse rather than breaking into bubbles under a magnetic field. Thus, pinned ring- or net-shaped domains prefer to survive and form isolated skyrmions, skyrmioniums, or skyrmion bags. Ultimately, the density of edge dislocation induced by the random spins in the system determines the nature of topological spin textures.

Our study establishes the role of disordered spins induced by the intercalated iron atoms in controlling the spin textures in a layered ferromagnet Fe_3GaTe_2 . Such random spin disorder enables the tuning of local magnetic interactions, allowing the manipulation of the order of the skyrmion lattice at a macro scale, even at room temperature. More strikingly, various unusual topological spin textures, including 3D distorted skyrmions, skyrmioniums, and skyrmion ‘bags’ can be realized by varying the level of intercalation. Our work highlights the significant impact of random spins residing in the vdW gaps in shaping unconventional topological spin textures. This method is likely promising for broad applications in other vdW magnets as well.

Methods

Sample synthesis

Single crystals of Fe_3GaTe_2 were grown by the self-flux method. Starting materials comprised of elemental iron granules (99.99%), gallium chunks (99.99%), and tellurium shots (99.999%) with a nominal molar ratio of 1: 1: 2 were fully mixed together inside the glovebox. The starting mixture was then evacuated and sealed inside a quartz tube. The sealed quartz tube was positioned horizontally inside a muffle furnace during the growth process. The reaction temperature was maintained at 900 °C under isothermal conditions for a duration of 6 days. The single crystals were obtained by quenching the furnace at 750 °C. Higher self-intercalated Fe_3GaTe_2 crystals were obtained by a slightly different growth method: a nominal molar ratio of iron: gallium: tellurium = 3: 1: 2 were fully mixed; then the raw materials were subjected to a higher growth temperature at 1000 °C, which were later slowly cooled down to 900 °C, before quenching to room temperature in the last step of synthesis.

Energy-dispersive X-ray spectroscopy (EDS)

A Quanta 3D field emission gun (FEG) scanning electron microscope (SEM) was used in this research. Energy dispersive spectroscopy (EDS) was carried out on multiple single crystals of Fe_3GaTe_2 mounted with carbon tape using an Oxford EDS attached to the SEM. The atomic ratio of iron, gallium, and tellurium from the multiple sites of each sample is consistent and averaged as 3.08(2): 0.96(2): 2, which is very close to the 3:1:2 stoichiometry. On the other hand, the EDS measurements on the flakes from the high self-intercalated crystals, which display strong ferromagnetism from the MFM measurements, indicate a higher self-intercalated Fe level with 3.65(8): 1: 1.92(4). In Fe_3GaTe_2 with higher Fe^{int} concentrations, there exist tellurium and gallium vacancies, which could lead to a slight overestimation of Fe^{int} concentration.

Single crystal X-ray diffraction (XRD)

Single crystal XRD measurements of the Fe_3GaTe_2 samples were carried out using the same conditions as outlined in the reference⁴¹. A solution was found using ShelXT2 in space group $P6_3/mmc$ (No. 194) with lattice parameters $a = b = 4.080$ Å, $c = 16.138$ Å, $\alpha = \beta = 90^\circ$, $\gamma = 120^\circ$. Although the space group is the same as that of either $\text{Fe}_{3-x}\text{GeTe}_2$ or $\text{Ni}_{3-x}\text{GeTe}_2$, the solution indicates that a small percentage of iron (labeled as Fe^{int} site) is inserted between the van der Waals layers, similar to the case of $\text{Ni}_{3-x}\text{GeTe}_2$ ⁵⁸. During the initial refinements of the data, the site occupancy of all atoms was free to vary. It was found that the Te and $\text{Fe}^{\text{top(bot)}}$ sites were very stable and close to 1, while the site occupancy of gallium was slightly less than 1 and close to 0.96. After fixing the site occupancy

of tellurium, Fe^{top(bot)}, and gallium to 1, 1, and 0.96, respectively, further refinement shows the site occupancy of Fe^{mid} (within the same horizontal plane as gallium) and Fe^{int} (inserted between the van der Waals layers) were 0.925 and 0.085, respectively. Therefore, from the refinement of the data, the best solution of the atomic ratio of iron, gallium, and tellurium equals 3.01: 0.96: 2, which is close to the elemental composition observed by the EDS measurements.

(Lorentz) scanning transmission electron microscopy

Cross-section TEM specimens were prepared from the Fe₃GaTe₂ nanoflakes using a Thermo Fisher Helios G4 UX focused ion beam. The preparation involved an initial milling with a Ga⁺ ion beam of 30 and 5 keV, followed by a final polishing step at 2 keV to minimize ion beam damage. Carbon and platinum protective layers were deposited before milling to protect the surface. Simultaneous HAADF- and iDPC-STEM were acquired by using a Cs-corrected Thermo Fisher Scientific “Kraken” Spectra 300 operated at 300 keV, with a probe semi-convergence angle of 30 mrad, and a beam current of 15 pA. The intensity line profiles across the Te-Fe^{int}-Te atomic planes were obtained by identifying the atomic column positions with Gaussian 2D peak fitting using a custom Python script and the Atomap package³⁹. Four-dimensional (4D) Lorentz scanning transmission electron microscopy (LSTEM) experiments were conducted under the same conditions as described in the references^{39,41}.

Magnetization measurements

Magnetization of the single crystals was carried out with a superconducting quantum interference device magnetometer (Quantum Design, 2-400 K, 7 T), with the magnetic fields applied along both the out-of-plane and in-plane directions of the crystal.

Transport measurements

Electronic transport measurements were performed in a Cryogen Free Measurement System from Cryogenic Ltd., using a Keithley 2400 source and 2182 nanometer. The applied current was fixed to 100 μ A.

DFT Calculations

DFT calculations were performed using the Vienna Ab initio Simulation Package (VASP) with the projector augmented wave (PAW) method. The local density approximation to the exchange-correlation functional without a Hubbard U correction was employed; this has previously been shown to describe the structural properties of isomorphous Fe₃GeTe₂ well. The plane wave energy cutoff was set at 400 eV. A vacuum layer of ≈ 20 Å was adopted to avoid the interaction between periodic images. The Hellmann–Feynman forces were taken to be converged when they became smaller than 0.001 eV Å⁻¹ on each ion. The Brillouin zone was sampled by a 15 \times 15 \times 1 k-point mesh for the monolayer unit cell. The four-state energy mapping method was performed to obtain magnetic parameters from DFT total energies, for which the 3 \times 3 \times 1 supercell and 5 \times 5 \times 1 mesh were adopted. In calculating DMI and single-ion anisotropy (SIA), the spin-orbit coupling was included. Our Monte Carlo (MC) simulations were performed using the calculated magnetic exchange interactions. The 100 \times 100 \times 1 supercells were adopted in the study. For each configuration, 10,000 and 100 000 MC steps per site were performed for equilibrating the system and statistical averaging, respectively.

MFM measurements

The MFM images of Fe₃GaTe₂ flakes on a SiO₂/Si wafer were measured at room temperature using an Asylum Research MFP-3D Origin⁺ scanning probe microscope. The zero-field skyrmion lattices were induced by an MFM tip with a strong stray field. A low stray field of MFM tips was used to measure the MFM image to avoid magnetic interactions of the tip with the sample or an applied field. The spatial magnetic resolution was better than 25 nm. We used a two-step method in frequency-

modulation mode to measure the MFM images. The distance between the sample surface and the MFM tip was fixed at 50 nm.

XMCD and PEEM

XMCD measurements were conducted at room temperature at Beamline 6.3.1 of the Advanced Light Source by alternating the magnetization parallel and antiparallel to the direction of circularly polarized X-rays at normal incidence. PEEM images were obtained at room temperature at Beamline 11.0.1 of the Advanced Light Source using left- and right-circular polarized X-rays with 60° off-normal incidence and a photon energy of 706.8 eV, corresponding to the Fe L₃ edge. The circularly polarized X-ray is incident at 60° off-normal angle onto the sample surface from the left of Fig. 2f, which has contributions from the in-plane component of the magnetization. The uniform contrast among stripe regions along different directions indicates little to no in-plane magnetization component in the domains.

Micromagnetic simulation

Micromagnetic simulation of the labyrinth and stripe domains was performed using the open-source software MuMax3⁶⁰. To simulate the nucleation and evolution of magnetic domains of Fe₃GaTe₂ as the temperature decreases from near T_c in each simulation, we set the saturation magnetization M_s to increase step by step from 0.05 to 1.0 of the maximum value 3.76×10^5 A/m, and let the system evolve (relax) until stable at each step. The magnetizations were initialized with a randomized state before the first step in each simulation. The phenomenological power law of the dependence of magnetic parameters on the saturation magnetization are set as follows: $A(m_s) = A_0 m_s^2$, $K_u(m_s) = K_{u0} m_s^3$, $D(m_s) = D_0 m_s^2$, where m_s is the magnetization ratio coefficient from 0.05 to 1.0 with steps of 0.05, A is the exchange stiffness, K_u is the perpendicular uniaxial magnetic anisotropy energy constant, and D is the DMI strength. The cubic power of m_s in K_u is to represent the lower magnetic anisotropy energy at high temperatures compared to magnetic dipole-dipole interaction, which is proportional to m_s^2 . Different densities of defects are simulated by random 50 nm-sized grains with larger magnetic anisotropy to simulate the local pinning effect. Magnetic parameters of the defect-free regions are $A_0 = 7.5 \times 10^{-12}$ J/m, $D_0 = 0.6$ mJ/m², $K_{u0} = 2 \times 10^5$ J/m³, and the defect regions host a three times of magnetic anisotropy K_{u0} . The simulations were run with a range of defect densities from 0% to 20%.

Reporting summary

Further information on research design is available in the Nature Portfolio Reporting Summary linked to this article.

Data availability

The data that support the figures and other findings of this study are available from the corresponding authors upon reasonable request.

References

- Fert, A., Reyren, N. & Cros, V. Magnetic skyrmions: advances in physics and potential applications. *Nat. Rev. Mater.* **2**, 17031 (2017).
- Tokura, Y. & Kanazawa, N. Magnetic Skyrmion materials. *Chem. Rev.* **121**, 2857–2897 (2021).
- Büttner, F., Lemesh, I. & Beach, G. S. D. Theory of isolated magnetic skyrmions: From fundamentals to room temperature applications. *Sci. Rep.* **8**, 4464 (2018).
- Göbel, B., Mertig, I. & Tretiakov, O. A. Beyond skyrmions: Review and perspectives of alternative magnetic quasiparticles. *Phys. Rep.* **895**, 1–28 (2021).
- Yu, X. Z. et al. Near room-temperature formation of a skyrmion crystal in thin-films of the helimagnet FeGe. *Nat. Mater.* **10**, 106–109 (2011).
- Mühlbauer, S. et al. Skyrmion lattice in a chiral magnet. *Science* **323**, 915–919 (2009).

7. Kézsmárki, I. et al. Néel-type skyrmion lattice with confined orientation in the polar magnetic semiconductor GaV₄S₈. *Nat. Mater.* **14**, 1116–1122 (2015).
8. Heinze, S. et al. Spontaneous atomic-scale magnetic skyrmion lattice in two dimensions. *Nat. Phys.* **7**, 713–718 (2011).
9. Nayak, A. K. et al. Magnetic antiskyrmions above room temperature in tetragonal Heusler materials. *Nature* **548**, 561–566 (2017).
10. Peng, L. et al. Controlled transformation of skyrmions and antiskyrmions in a non-centrosymmetric magnet. *Nat. Nanotech* **15**, 181–186 (2020).
11. Wei, W.-S., He, Z.-D., Qu, Z. & Du, H.-F. Dzyaloshinsky–Moriya interaction (DMI)-induced magnetic skyrmion materials. *Rare Met.* **40**, 3076–3090 (2021).
12. Sutcliffe, P. Skyrmion Knots in Frustrated Magnets. *Phys. Rev. Lett.* **118**, 247203 (2017).
13. Zhang, Y. et al. Emergence of skyrmionium in a two-dimensional CrGe(Se,Te)₃ Janus monolayer. *Phys. Rev. B* **102**, 241107 (2020).
14. Leonov, A. O. & Mostovoy, M. Multiply periodic states and isolated skyrmions in an anisotropic frustrated magnet. *Nat. Commun.* **6**, 8275 (2015).
15. Zhang, X. et al. Control and manipulation of a magnetic skyrmionium in nanostructures. *Phys. Rev. B* **94**, 094420 (2016).
16. Proctor, T. C., Garanin, D. A. & Chudnovsky, E. M. Random Fields, Topology, and the Imry-Ma Argument. *Phys. Rev. Lett.* **112**, 097201 (2014).
17. Rybakov, F. N. et al. Magnetic hopfions in solids. *APL Mater.* **10**, 111113 (2022).
18. Stock, C. et al. Universal static and dynamic properties of the structural transition in PbZn_{1/3}Nb_{2/3}O₃. *Phys. Rev. B* **69**, 094104 (2004).
19. Li, F. et al. Giant piezoelectricity of Sm-doped Pb(Mg_{1/3}Nb_{2/3})O₃-PbTiO₃ single crystals. *Science* **364**, 264–268 (2019).
20. Pan, H. et al. Ultrahigh-energy density lead-free dielectric films via polymorphic nanodomain design. *Science* **365**, 578–582 (2019).
21. Kim, J. et al. Ultrahigh capacitive energy density in ion-bombarded relaxor ferroelectric films. *Science* **369**, 81–84 (2020).
22. Binder, K. & Young, A. P. Spin glasses: Experimental facts, theoretical concepts, and open questions. *Rev. Mod. Phys.* **58**, 801–976 (1986).
23. Harris, R., Plischke, M. & Zuckermann, M. J. New model for amorphous magnetism. *Phys. Rev. Lett.* **31**, 160–162 (1973).
24. Fert, A. & Levy, P. M. Role of anisotropic exchange interactions in determining the properties of spin-glasses. *Phys. Rev. Lett.* **44**, 1538–1541 (1980).
25. Tan, C. et al. Hard magnetic properties in nanoflake van der Waals Fe₃GeTe₂. *Nat. Commun.* **9**, 1554 (2018).
26. May, A. F., Calder, S., Cantoni, C., Cao, H. & McGuire, M. A. Magnetic structure and phase stability of the van der Waals bonded ferromagnet Fe_{3-x}GeTe₂. *Phys. Rev. B* **93**, 014411 (2016).
27. Ding, B. et al. Observation of magnetic Skyrmion Bubbles in a van der Waals Ferromagnet Fe₃GeTe₂. *Nano Lett.* **20**, 868–873 (2020).
28. Wu, Y. et al. Néel-type skyrmion in WTe₂/Fe₃GeTe₂ van der Waals heterostructure. *Nat. Commun.* **11**, 3860 (2020).
29. Birch, M. T. et al. History-dependent domain and skyrmion formation in 2D van der Waals magnet Fe₃GeTe₂. *Nat. Commun.* **13**, 3035 (2022).
30. Yang, M. et al. Creation of skyrmions in van der Waals ferromagnet Fe₃GeTe₂ on (Co/Pd)_n superlattice. *Sci. Adv.* **6**, eabb5157 (2020).
31. Powalla, L. et al. Seeding and emergence of composite Skyrmions in a van der Waals Magnet. *Adv. Mater.* **35**, 2208930 (2023).
32. Chakraborty, A. et al. Magnetic Skyrmions in a thickness tunable 2D Ferromagnet from a defect driven Dzyaloshinskii–Moriya interaction. *Adv. Mater.* **34**, 2108637 (2022).
33. Wu, Y. et al. Fe-intercalation dominated ferromagnetism of van der Waals Fe₃GeTe₂. *Adv. Mater.* **35**, 2302568 (2023).
34. Zhang, G. et al. Above-room-temperature strong intrinsic ferromagnetism in 2D van der Waals Fe₃GeTe₂ with large perpendicular magnetic anisotropy. *Nat. Commun.* **13**, 5067 (2022).
35. Wu, H. et al. Spectral evidence for local-moment ferromagnetism in van der Waals Metals Fe₃GeTe₂ and Fe₃GeTe₂. *Phys. Rev. B* **109**, 104410 (2024).
36. Tate, M. W. et al. High dynamic range pixel array detector for scanning transmission electron microscopy. *Microsc. Microanal.* **22**, 237–249 (2016).
37. Philipp, H. T. et al. Very-high dynamic range, 10,000 frames/second pixel array detector for electron microscopy. *Microsc. Microanal.* **28**, 425–440 (2022).
38. Zhang, S. et al. Direct writing of room temperature and zero field skyrmion lattices by a scanning local magnetic field. *Appl. Phys. Lett.* **112**, 132405 (2018).
39. Zhang, H. et al. Room-temperature skyrmion lattice in a layered magnet (Fe_{0.5}Co_{0.5})₅GeTe₂. *Sci. Adv.* **8**, eabm7103 (2022).
40. Meisenheimer, P. et al. Ordering of room-temperature magnetic skyrmions in a polar van der Waals magnet. *Nat. Commun.* **14**, 3744 (2023).
41. Zhang, H. et al. A room temperature polar magnetic metal. *Phys. Rev. Mater.* **6**, 044403 (2022).
42. Xu, C. et al. Assembling diverse Skyrmionic phases in Fe₃GeTe₂ monolayers. *Adv. Mater.* **34**, 2107779 (2022).
43. Zhang, X. et al. Skyrmion dynamics in a frustrated ferromagnetic film and current-induced helicity locking-unlocking transition. *Nat. Commun.* **8**, 1717 (2017).
44. Zheng, F. et al. Magnetic skyrmion braids. *Nat. Commun.* **12**, 5316 (2021).
45. Wolf, D. et al. Unveiling the three-dimensional magnetic texture of skyrmion tubes. *Nat. Nanotech.* **17**, 250–255 (2022).
46. Seki, S. et al. Direct visualization of the three-dimensional shape of skyrmion strings in a noncentrosymmetric magnet. *Nat. Mater.* **21**, 181–187 (2022).
47. Fert, A., Cros, V. & Sampaio, J. Skyrmions on the track. *Nat. Nanotechnol.* **8**, 152–156 (2013).
48. Parkin, S. & Yang, S.-H. Memory on the racetrack. *Nat. Nanotechnol.* **10**, 195–198 (2015).
49. Tang, J. et al. Magnetic skyrmion bundles and their current-driven dynamics. *Nat. Nanotechnol.* **16**, 1086–1091 (2021).
50. Yu, X. et al. Realization and current-driven dynamics of fractional Hopfions and their ensembles in a Helimagnet FeGe. *Adv. Mater.* **35**, 2210646 (2023).
51. Yang, S. et al. Reversible conversion between skyrmions and skyrmioniums. *Nat. Commun.* **14**, 3406 (2023).
52. Zheng, F. et al. Hopfion rings in a cubic chiral magnet. *Nature* **623**, 718–723 (2023).
53. Jiang, W. et al. Direct observation of the skyrmion Hall effect. *Nat. Phys.* **13**, 162–169 (2017).
54. Zang, J., Mostovoy, M., Han, J. H. & Nagaosa, N. Dynamics of Skyrmion crystals in metallic thin films. *Phys. Rev. Lett.* **107**, 136804 (2011).
55. Litzius, K. et al. Skyrmion Hall effect revealed by direct time-resolved X-ray microscopy. *Nat. Phys.* **13**, 170–175 (2017).
56. Reichhardt, C., Reichhardt, C. J. O. & Milošević, M. V. Statics and dynamics of skyrmions interacting with disorder and nanostructures. *Rev. Mod. Phys.* **94**, 035005 (2022).
57. Göbel, B., Schäffer, A. F., Berakdar, J., Mertig, I. & Parkin, S. S. P. Electrical writing, deleting, reading, and moving of magnetic skyrmioniums in a racetrack device. *Sci. Rep.* **9**, 12119 (2019).
58. Drachuck, G. et al. Effect of nickel substitution on magnetism in the layered van der Waals ferromagnet Fe₃GeTe₂. *Phys. Rev. B* **98**, 144434 (2018).
59. Nord, M., Vullum, P. E., MacLaren, I., Tybell, T. & Holmestad, R. Atomap: a new software tool for the automated analysis of atomic

- resolution images using two-dimensional Gaussian fitting. *Adv. Struct. Chem. Imag.* **3**, 9 (2017).
60. Vansteenkiste, A. et al. The design and verification of MuMax3. *AIP Adv.* **4**, 107133 (2014).

Acknowledgements

Work at Lawrence Berkeley National Laboratory was primarily supported by the U.S. Department of Energy, Office of Science, Office of Basic Energy Sciences, Materials Sciences and Engineering Division under Contract No. DE-AC02-05CH11231 within the Quantum Materials Program (No. KC2202) and U.S. Department of Energy, Office of Science, Office of Basic Energy Sciences, Materials Sciences and Engineering Division under Contract No. DE-AC02-05-CH11231 (Codesign of Ultra-Low-Voltage Beyond CMOS Microelectronics (MicroelecLBLRamesh)) for the development of materials for low-power microelectronics. H.Z. and R.R. acknowledge the Air Force Office of Scientific Research 2D Materials and Devices Research program through Clarkson Aerospace Corp under Grant No. FA9550-21-1-0460. Y.T.S. and D.A.M. acknowledge financial support from the Department of Defense, Air Force Office of Scientific Research under Grant No. FA9550-18-1-0480. Z.Q. and T.W. acknowledge the U.S. Department of Energy, Office of Science, Office of Basic Energy Sciences, Materials Sciences and Engineering Division under Contract No. DE-AC02-05CH11231 (van der Waals heterostructures program, KCWF16). Z.Q. acknowledges the Future Materials Discovery Program through the National Research Foundation of Korea (No. 2015M3D1A1070467), Science Research Center Program through the National Research Foundation of Korea (No. 2015R1A5A1009962), King Abdullah University of Science and Technology (KAUST) under Award No. ORA-CRG10-2021-4665. C.X. acknowledges financial support from the National Key R&D Program of China (No. 2022YFA1402901), NSFC (No. 12274082), Shanghai Science and Technology Committee (Grant No. 23ZR1406600), Shanghai Pilot Program for Basic Research-FuDan University 21TQ1400100 (23TQ017). B.Z. acknowledges the support from the China Postdoctoral Science Foundation (Grant No. 2022M720816). F.M. and J.Y. acknowledge support from the U.S. Department of Energy, Office of Science, Office of Basic Energy Sciences, Materials Sciences and Engineering Division under contract DE-AC02-05-CH11231 (Organic-Inorganic Nanocomposites KC3104). L.B. thanks the support of the MURI ETHOS Grant No. W911NF-21-2-0162 from the Army Research Office (ARO), the Vannevar Bush Faculty Fellowship (VBFF) Grant No. N00014-20-1-2834 from the Department of Defense and award no. DMR-1906383 from the National Science Foundation Q-AMASE-i Program (MonArk NSF Quantum Foundry). H.P. acknowledges support from the Army Research Laboratory via the Collaborative for Hierarchical Agile and Responsive Materials (CHARM) under cooperative agreement W911NF-19-2-0119. Y.T.S. acknowledges additional financial support from the startup funding at University of Southern California. This research used resources of the Advanced Light Source, which is a DOE Office of Science User Facility under contract no. DE-AC02-05CH11231. K.X. and A.M. acknowledge cryo-EM support from the US Department of Energy, Office of Basic Energy Sciences, Division of Materials Science and Engineering under contract DE-AC02-76SF00515. P.B. and R.R. acknowledge the support of the Army Research Office under the ETHOS MURI via cooperative agreement W911NF-21-2-0162. The devices for transport measurements were fabricated in the UC Berkeley Marvell Nanofabrication Laboratory. The electron microscopy studies were performed at the Cornell Center for Materials Research, a National Science Foundation (NSF) Materials Research Science and Engineering Centers program (DMR-1719875, NSF-MRI-1429155). The microscopy work at Cornell was supported by the NSF PARADIM (DMR-2039380), with additional support from Cornell

University, the Weill Institute and the Kavli Institute at Cornell. The authors acknowledge M. Thomas, J. G. Grazul, and M. Silvestry Ramos for technical support and careful maintenance of the instruments.

Author contributions

H.Z., X.C., R.J.B. and R.R. conceived the project and designed experiments; X.C. synthesized the crystals and performed the magnetization measurements, assisted by N.G.; N.S. performed single-crystal XRD; H.Z. carried out MFM measurements and electric transport measurements; Y.T.S. and K.X. conducted the STEM measurements under the supervision of D.A.M. and A.M.; Y.T.S. performed the LTEM measurements under the supervision of D.A.M.; B.Z. did the DFT calculations under the supervision of C.X. and L.B.; T.W. and H.Z. performed the XMCD and PEEM measurements assisted by Z.Q., A.S., A.N.D. and P.S.; T.W. performed the micromagnetic simulation assisted by H.Z.; F.M., X.H., Y.J. and H.Z. fabricated the devices with assistance from X.Z.C., S.H. and H.P.; P.M. implemented statistical analysis; T.Z. and Z.H. carried out the STM measurements under the supervision of M.F.C.; P.B. performed the SHG measurements under the supervision of A.R.; J.Y. and L.W.M. gave suggestions and commented on the manuscript. H.Z., X.C. and R.R. wrote the manuscript. All authors discussed the results and commented on the manuscript.

Competing interests

The authors declare no competing interests.

Additional information

Supplementary information The online version contains supplementary material available at <https://doi.org/10.1038/s41467-024-47715-5>.

Correspondence and requests for materials should be addressed to Hongrui Zhang, Xiang Chen, Changsong Xu or Ramamoorthy Ramesh.

Peer review information *Nature Communications* thanks the anonymous reviewer(s) for their contribution to the peer review of this work. A peer review file is available.

Reprints and permissions information is available at <http://www.nature.com/reprints>

Publisher's note Springer Nature remains neutral with regard to jurisdictional claims in published maps and institutional affiliations.

Open Access This article is licensed under a Creative Commons Attribution 4.0 International License, which permits use, sharing, adaptation, distribution and reproduction in any medium or format, as long as you give appropriate credit to the original author(s) and the source, provide a link to the Creative Commons licence, and indicate if changes were made. The images or other third party material in this article are included in the article's Creative Commons licence, unless indicated otherwise in a credit line to the material. If material is not included in the article's Creative Commons licence and your intended use is not permitted by statutory regulation or exceeds the permitted use, you will need to obtain permission directly from the copyright holder. To view a copy of this licence, visit <http://creativecommons.org/licenses/by/4.0/>.

© The Author(s) 2024

¹Department of Materials Science and Engineering, University of California, Berkeley, CA 94720, USA. ²Materials Sciences Division, Lawrence Berkeley National Laboratory, Berkeley, CA 94720, USA. ³Mork Family Department of Chemical Engineering and Materials Science, University of Southern California, Los Angeles, CA 90089, USA. ⁴School of Applied and Engineering Physics, Cornell University, Ithaca, NY 14853, USA. ⁵Department of Physics, University of California, Berkeley, CA 94720, USA. ⁶Center for Neutron Science and Technology, School of Physics, Sun Yat-Sen University, Guangzhou, Guangdong 510275, China. ⁷Key Laboratory of Computational Physical Sciences (Ministry of Education), Institute of Computational Physical Sciences, State Key Laboratory of Surface Physics, and Department of Physics, Fudan University, Shanghai 200433, China. ⁸Shanghai Qi Zhi Institute, Shanghai 200030, China. ⁹Department of Mechanical Engineering, Stanford University, Stanford, CA, USA. ¹⁰Advanced Light Source, Lawrence Berkeley National Laboratory, Berkeley, CA 94720, USA. ¹¹Molecular Foundry, Lawrence Berkeley National Laboratory, Berkeley, CA 94720, USA. ¹²Department of Materials Science and NanoEngineering, Rice University, Houston, TX 77005, USA. ¹³Department of Chemistry, Rice University, Houston, TX 77005, USA. ¹⁴Department of Physics and Astronomy, Rice University, Houston, TX 77005, USA. ¹⁵Rice Advanced Materials Institute, Rice University, Houston, TX 77005, USA. ¹⁶Physics Department and Institute for Nanoscience and Engineering, University of Arkansas, Fayetteville, AR 72701, USA. ¹⁷Kavli Institute at Cornell for Nanoscale Science, Cornell University, Ithaca, NY 14853, USA. ¹⁸These authors contributed equally: Hongrui Zhang, Yu-Tsun Shao, Xiang Chen, Binhua Zhang.

✉ e-mail: hongruizhang@berkeley.edu; chenx889@mail.syu.edu.cn; csxu@fudan.edu.cn; ramesh@berkeley.edu