

UC Irvine

UC Irvine Previously Published Works

Title

Seizure phenotype and underlying cellular defects in Drosophila knock-in models of DS (R1648C) and GEFS+ (R1648H) SCN1A epilepsy

Permalink

<https://escholarship.org/uc/item/1767v8gc>

Journal

eNeuro, 8(5)

ISSN

2373-2822

Authors

Roemmich, Alexa Joanna

Vu, Thy

Lukacsovich, Tamas

et al.

Publication Date

2021-09-01

DOI

10.1523/eneuro.0002-21.2021

Copyright Information

This work is made available under the terms of a Creative Commons Attribution License, available at <https://creativecommons.org/licenses/by/4.0/>

Peer reviewed

Disorders of the Nervous System

Seizure Phenotype and Underlying Cellular Defects in *Drosophila* Knock-In Models of DS (R1648C) and GEFS+ (R1648H) *SCN1A* Epilepsy

Alexa Joanna Roemmich,¹ Thy Vu,¹ Tamas Lukacsovich,² Charlesice Hawkins,³ Soleil S. Schutte,⁴ and Diane K. O'Dowd¹

<https://doi.org/10.1523/ENEURO.0002-21.2021>

¹Department of Developmental and Cell Biology, University of California, Irvine, Irvine, California 92697, ²Faculties of Medicine and Natural Sciences, Brain Research Institute, University of Zürich, CH-8057 Zürich, Switzerland, ³Office of Intramural Training and Education, National Institutes of Health, Bethesda, Maryland 20892, and ⁴Department of Anesthesiology, University of Florida, Gainesville, Florida 32610

Abstract

Mutations in the voltage-gated sodium channel gene *SCN1A* are associated with human epilepsy disorders, but how most of these mutations alter channel properties and result in seizures is unknown. This study focuses on two different mutations occurring at one position within *SCN1A*. R1648C (R-C) is associated with the severe disorder Dravet syndrome, and R1648H (R-H), with the milder disorder GEFS+. To explore how these different mutations contribute to distinct seizure disorders, *Drosophila* lines with the R-C or R-H mutation, or R1648R (R-R) control substitution in the fly sodium channel gene *para* were generated by CRISPR-Cas9 gene editing. The R-C and R-H mutations are homozygous lethal. Animals heterozygous for R-C or R-H mutations displayed reduced life spans and spontaneous and temperature-induced seizures not observed in R-R controls. Electrophysiological recordings from adult GABAergic neurons in R-C and R-H mutants revealed the appearance of sustained neuronal depolarizations and altered firing frequency that were exacerbated at elevated temperature. The only significant change observed in underlying sodium currents in both R-C and R-H mutants was a hyperpolarized deactivation threshold at room and elevated temperature compared with R-R controls. Since this change is constitutive, it is likely to interact with heat-induced changes in other cellular properties to result in the heat-induced increase in sustained depolarizations and seizure activity. Further, the similarity of the behavioral and cellular phenotypes in the R-C and R-H fly lines, suggests that disease symptoms of different severity associated with these mutations in humans could be due in large part to differences in genetic background.

Key words: *Drosophila*; electrophysiology; epilepsy; *SCN1A*; sodium channel

Significance Statement

Knock-in *Drosophila* lines were generated by CRISPR-Cas9 gene editing to explore how the R1648C (R-C) and R1648H (R-H) mutations in the *SCN1A* sodium channel gene contribute to distinct epilepsy disorders, Dravet syndrome, and GEFS+, respectively. *Drosophila* heterozygous for the R-C or R-H mutation displayed spontaneous seizures exacerbated at high temperature. GABAergic neurons in both mutants exhibited sustained depolarizations, interrupting neuronal firing, that increased in incidence at elevated temperature. A hyperpolarized deactivation threshold in R-C and R-H sodium currents was constitutive, implicating interaction with other heat-sensitive processes to alter firing properties. The similarity of the behavioral and cellular phenotypes in the R-C and R-H fly lines suggests that disorders of different severity in humans could be due in large part to differences in genetic background.

Introduction

Mutations in voltage-gated sodium channels are implicated in a range of human seizure disorders (Escayg and Goldin, 2010). In the sodium channel gene *SCN1A*, there are >1250 dominantly inherited mutations identified in patients with epilepsy. Though the loci of these mutations are known, how individual mutations lead to patient symptoms is largely unknown.

The Na_v1.1 sodium channel, encoded for by *SCN1A*, is composed of four homologous domains (I–IV), each with six transmembrane-spanning segments (termed S1–S6; Catterall, 2017). The fourth segment of each domain (S4) has conserved positively charged amino acids at every third position, notably arginines, which are important in activating the channel in response to depolarizing membrane potential (Shen et al., 2017; Pan et al., 2018). The S4 segment in domain IV is unique in that its movement is slower, and the movement uncovers a binding site for the inactivation loop in the pore (Chen et al., 1996; Chanda and Bezanilla, 2002; Goldschen-Ohm et al., 2013). In this study, we focused on two mutations in the S4 segment of domain IV, R1648H (R-H) and R1648C (R-C). Although the mutations occur at the same amino acid location within the channel, they lead to different forms of epilepsy. R1648H causes generalized epilepsy with febrile seizures plus (GEFS+) in patients (Baulac et al., 1999), while R1648C leads to Dravet syndrome (DS; Ohmori et al., 2002; Striano et al., 2008). GEFS+ is usually a moderate form of epilepsy, characterized by febrile seizures that persist beyond the age of 6 years. DS is generally more severe and is characterized by delayed development and impaired motor functions in addition to seizures. Both types of epilepsy feature febrile as well as spontaneous seizures. In addition, patients with these types of epilepsy are frequently resistant to anticonvulsant drugs (Ogiwara et al., 2007; Escayg and Goldin, 2010). As the connection between individual mutations and patient symptoms remains largely unknown, we aim to model patient-specific epilepsies in the laboratory.

Studies of isolated sodium currents in oocytes, HEK cells, and computational models found that the R1648H mutation

resulted in a decreased use dependence and faster recovery from inactivation. In addition, both R1648H and R1648C mutant sequences resulted in large persistent sodium currents during sustained depolarization not seen in the wild-type channels (Spampanato et al., 2001; Lossin et al., 2002; Rhodes et al., 2004; Vanoye et al., 2006; Kahlig et al., 2010). Later studies using a knock-in mouse model of R1648H demonstrated that this mutation resulted in animals that displayed reduced threshold to heat-induced seizures. Analysis of isolated neurons indicated decreased repetitive firing selectively in bipolar inhibitory neurons, which has been attributed to reduced sodium currents with slower recovery from inactivation and increased use dependence inactivation (Tang et al., 2009; Martin et al., 2010). Surprisingly, there were no changes in persistent current levels, which had been a key result from heterologous expression system studies. These findings demonstrate that a single mutation can result in distinct underlying mechanisms of cellular dysfunction in heterologous expression systems and excitable cells. However, since there is no R1648C mouse model to date, it has not been possible to explore similarities and differences in changes associated with R-H versus R-C in mouse neurons. In addition, it is unknown how temperature affects channel function for either mutation.

To evaluate the effect of the same mutation at a single locus in excitable cells, and to explore the effects of temperature on both cellular and behavioral phenotypes, we used the *Drosophila* model. One advantage of using *Drosophila* is that they have only a single sodium channel gene compared with mammals, which have multiple genes encoding voltage-gated sodium channels including three that are highly expressed in the adult brain (*SCN1A*, *SCN2A*, and *SCN8A*; Escayg and Goldin, 2010). The *Drosophila* voltage-gated sodium channel gene (*para*) encodes a protein (Para) similar in structure and function to Na_v1.1 (Loughney et al., 1989; O'Dowd et al., 1989). Previous studies showed that knock-in animals homozygous for the *SCN1A* mutation K1270T causing GEFS+ or S1231R causing DS displayed heat-induced seizure phenotypes with distinct properties in the two mutant lines that were not seen in the controls (Sun et al., 2012; Schutte et al., 2014, 2016). It was also noted that the mutations caused distinct alterations to sodium channel activity in homozygous neurons. In the present study, CRISPR-Cas9 gene editing was used to insert R1648C, R1648H, or R1648R (R-R) into the *Drosophila* sodium channel gene. Behavioral and electrophysiological studies were performed on R-C and R-H heterozygous mutants and R-R controls.

Materials and Methods

Drosophila generation

A plasmid expressing the DsRed marker fused to an eye-specific promoter and flanked by worm sequences and two arms (2 and 1.4 kb) homologous to *para*, as well as plasmids expressing guide RNA (gRNA), were injected into fly embryos that expressed Cas9 under the germ cell promoter *vas*. Successfully transformed adults were selected based on DsRed expression in their eyes. The *para*

Received January 1, 2021; accepted August 14, 2021; First published September 2, 2021.

The authors declare no competing financial interests.

Author contributions: A.J.R., T.L., S.S.S., and D.K.O. designed research; A.J.R., T.V., and C.H. performed research; A.J.R. and T.V. analyzed data; A.J.R., S.S.S., and D.K.O. wrote the paper.

This work was supported by the National Institutes of Health Grant R01-NS-083009 (D.K.O.), the Graduate Assistant in Areas of National Need Grant P200A120207, and a Graduate Dean's Dissertation Fellowship, Graduate Division, University of California, Irvine (to A.J.R.).

Acknowledgements: We thank Dr. Debra Mauzy-Melitz for the GAANN (Graduate Assistance in Areas of National Need) program that supported A.J.R.

Correspondence should be addressed to Diane K. O'Dowd at dkodowd@uci.edu.

<https://doi.org/10.1523/ENEURO.0002-21.2021>

Copyright © 2021 Roemmich et al.

This is an open-access article distributed under the terms of the Creative Commons Attribution 4.0 International license, which permits unrestricted use, distribution and reproduction in any medium provided that the original work is properly attributed.

gene is located on the X chromosome in *Drosophila*, so disruption of the *para* gene in DsRed flies resulted in lethality in hemizygous males and homozygous females. The line was maintained by balancing the mutant X chromosome with FM7.

In the second step, a plasmid that expresses gRNA targeted to the worm sequences flanking DsRed, along with a plasmid containing the *para* gene exon 30 containing a point mutation, were injected into *vas*-Cas9 embryos. The repair template carried at the 1648 aa codon position either the desired mutation R-C (CGA to TGT) and R-H (CGA to CAT) or a silent mutation R-R (CGA to CGT) that serves as our control. Injected fly embryos that matured may produce eggs with the restored but mutated *para* gene. Females were crossed with FM7/Y males.

For the R-C and R-R transformation, the presence of the mutated *para* gene rescued male lethality, so males with non-bar-shaped eyes (expressing mutated *para* on the manipulated X chromosome) were used as founders for line propagation and then were sequenced for genotype verification. For the R-H transformation, male lethality was not rescued. Female flies were screened for the loss of DsRed, then were used as founders and sequenced. Sequencing of ~1.7 kb of DNA surrounding the targeted mutation site and gRNA cut sites confirmed the presence of the predicted base pair change in each line with no additional mutations, other than a few silent mutations where two different codons for the same amino acid were present in the population. Multiple, independent lines were obtained, backcrossed for five generations on a UAS-GFP; w+ background, and maintained. R-C and R-H mutations are homozygous lethal, so all lines are maintained as heterozygous stocks over the X chromosome balancer FM7.

Seizure behavior test

To simulate febrile conditions that induce seizures in individuals with GEFS+ and DS, flies 1 d posteclosion were placed in groups of five in empty vials that were then immersed in a water bath, first at room temperature and then at high temperature for 2 min. An external bath temperature of 40°C was selected as it was the lowest temperature that induced clear seizure-like behavior in all mutant flies within the 2 min trial period. The maximum temperature inside the vial after 2 min was ~33°C (see Fig. 2B). Video recordings of the assay were evaluated, and the number of flies seizing in each vial at 20 s intervals was determined. A seizure was defined as a fly exhibiting a whole-body twitch or jump, or falling onto its back or side, often accompanied by leg twitching or wing flapping. Researchers were blinded to genotype during analysis. Data from multiple experiments were used to determine the average probability of seizure for a fly of a certain genotype at any second during the assay.

Life-span assay

Three groups of 10 newly eclosed female flies from both mutant lines, R1648C and R1648H, as well as the control line R1648R, were separated by genotype and

placed in vials laid horizontally containing standard cornmeal-based food. The flies were housed under a 12 h light/dark cycle at 23°C. Fatalities were recorded every 1–3 d, and food vials were changed twice weekly. Survival curves were created using the Kaplan–Meier estimate and analyzed using the Mantel–Cox log-rank test.

Electrophysiology

Whole-brain dissections were conducted on adult female mutant or control flies 2 d posteclosion. Briefly, the fly was anesthetized on ice for 1 min, then decapitated. The eyes were cut and mouth parts removed, and the rest of the head was placed into an external solution (described below) also containing a papain suspension. After 5 min, the brain was removed from the cuticle and connective tissue was removed. Neurons targeted for recording were located in the dorsal antennal lobe. Local neurons (LNs) were distinguished from projection neurons based on the soma size (~10 vs 6 μm) and action potential amplitude (~30–40 vs 2–5 mV).

Whole-cell sodium currents and depolarization-evoked action potentials were recorded with whole-cell pipettes of 9–11 M Ω . Sodium currents were recorded using a pipette solution containing the following (in mM): 102 CsOH, 102 D-gluconic acid, 17 NaCl, 0.085 CaCl₂, 1.7 MgCl₂, 8.5 HEPES, 0.94 EGT, and 25 ATP. The pH was adjusted to 7.2 with CsOH, and the osmolarity was adjusted to 232–230 mOsm. The external solution contained the following (in mM): 122 NaCl, 3.0 KCl, 1.8 CoCl₂, 0.8 MgCl₂, 5.0 glucose, and 10 HEPES. It also contained 2.5 mM tetraethylammonium (TEA), 1.0 mM 1-aminopyridine (4-AP), 20 μM (+)-tubocurarine, and 10 μM picrotoxin. The pH was adjusted to 7.2 with NaOH, and the osmolarity was adjusted to 250–255 mOsm/L. Evoked action potentials were recorded using the same internal solution, replacing the CsOH with 102 mM potassium gluconate, and the D-gluconic acid was removed. The external solution was the same except that the CoCl₂ was replaced by CaCl₂ and the TEA and 4-AP were removed. Spontaneous action potentials were recorded using the same internal and external solutions as for evoked action potentials, without the presence of blockers. The chamber was continuously perfused at 0.75–1.0 ml/min, and the temperature in the chamber was controlled and monitored using a CL-100 Bipolar Temperature Controller (Harvard Apparatus). Data were acquired with an Axopatch 200B amplifier (Molecular Devices), a Digidata 1322A digital-to-analog converter (Molecular Devices), a Dell computer (Dimension 8200), and pClamp9 software (Molecular Devices).

For evoked electrophysiological recordings, baseline activity was recorded at 22°C, activity at elevated temperature was recorded at 30°C, and activity postcooling was recorded after the chamber had returned to 22°C for 5 min. Spontaneous burst characteristics were analyzed for each trace at sample intervals 90–110, 190–210, and 290–310 s for baseline 22°C data, and 690–710, 790–810, and 890–910 s for postcooling 22°C data. For elevated temperature, 60 s of data during heating was analyzed, starting at 26°C for each cell and reaching an average of 29.5°C at the end of the 60 s.

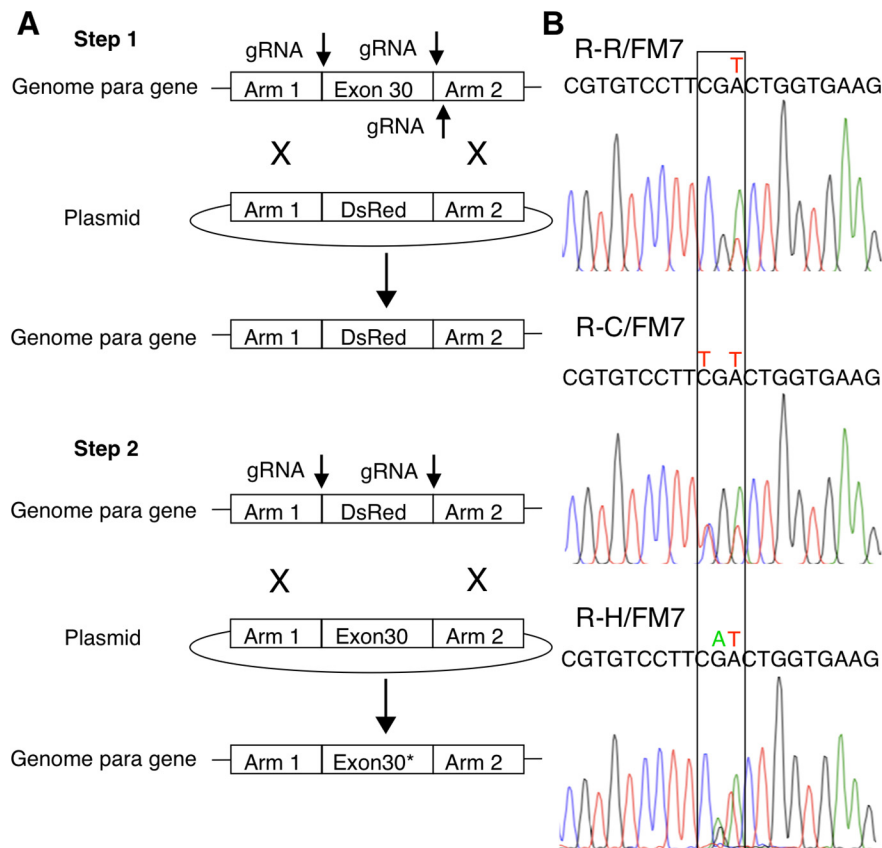


Figure 1. CRISPR strategy and validation. **A**, Scheme of the two-step CRISPR-Cas9-mediated genome editing for targeting the mutations to the *Drosophila para* gene. **B**, Mutant *Drosophila* lines were confirmed by Sanger sequencing. The wild-type codon is CGA. Step 2 repair plasmids carried the silent mutation CGT for R-R controls, TGT for R-C mutants, and CAT for R-H mutants.

Statistics

Statistical significance was determined using ANOVA with Tukey's *post hoc* test for multiple experimental groups. Paired *t* tests were used to determine significance between room temperature and high-temperature data within a single genotype. Data are shown as the mean \pm SE.

Results

CRISPR-Cas9 generation of *Drosophila* carrying epilepsy-causing mutations

To create flies expressing patient-specific epilepsy-causing mutations, a two-step CRISPR-Cas9-mediated genome-editing strategy was used. In the first step, exon 30 of the *para* sodium channel gene, where the target missense mutations are located, was replaced by a DsRed marker flanked by arms including *Caenorhabditis elegans* sequences (Fig. 1A). In the second step, using gRNA targeted to the worm sequences, the DsRed marker and worm sequences were replaced by exon 30 of the *para* gene containing either the desired mutation R-C (CGA to TGT) and R-H (CGA to CAT), or a silent mutation R-R (CGA to CGT) that serves as the control (Fig. 1A). Sequencing of \sim 1.7 kb of DNA surrounding the targeted mutation site and gRNA cut sites (Fig. 1B) confirmed the

presence of the predicted base pair change in each line with no additional mutations. Multiple, independent lines were obtained, each resulting from a unique CRISPR insertion of R-C, R-H, or R-R. Both R-C and R-H mutations are homozygous lethal, so all lines were maintained as heterozygous stocks over the X-chromosome balancer FM7. Flies with these mutations are heterozygous, so all experiments were performed on heterozygous females.

Mutants display seizure-like behavior and reduced life span

As individuals with DS and GEFS+ frequently have febrile-induced seizures in addition to spontaneous seizures, three fly lines heterozygous for the R-C mutation and four lines heterozygous for the R-H mutation were monitored for the presence of spontaneous and/or heat-induced seizure behavior. Groups of five flies were collected 1 d post-eclosion and placed in a vial. A 2 min video was recorded immediately following immersion of the vial into a water bath, first at room temperature (22°C) and then at high temperature (40°C). Videos were later evaluated for seizure activity. A seizure was defined as the fly exhibiting a whole-body twitch or jump, or falling onto its back or side, often accompanied by leg twitching or wing flapping. Analysis was conducted blinded with respect to genotype.

Results are reported as the average probability of seizure for a fly of a certain genotype at any point in time during the assay. The four R-R control fly lines did not exhibit seizure activity in water baths at room temperature or high temperature (Fig. 2A). In contrast, both R-C and R-H heterozygous flies had a significantly increased seizure probability at room temperature compared with the R-R/FM7 control. At high temperature, seizure probability increased significantly in both R-C and R-H when compared with their behavior at room temperature, and with control R-R flies at high temperature (Fig. 2A; $p < 0.05$, ANOVA, Tukey's *post hoc* test). There was no difference in seizure probability between lines with the same mutation. These data indicate that the seizure activity is associated with the introduced mutations, either R-C or R-H, and is not influenced significantly by the specific insertion events during the CRISPR process that resulted in the generation of each line.

To evaluate the time course of heat-induced seizure activity associated with the different mutations, multiple flies in single R-H, R-C, and R-R lines were examined at 20 s intervals over a 2 min period following immersion of the vial in water bath of 40°C. The actual temperature inside the vial was continuously monitored during heating, reaching a temperature of 33°C at 2 min (Fig. 2Bi). The onset of heat-induced seizures was similar in the R-C and R-H lines, with maximal seizure probability occurring between 100 and 120 s (Fig. 2B). The similarity in the spontaneous and heat-induced seizure phenotypes in the R-C and R-H lines was unexpected since the R-C mutation is associated with the more severe seizure disorder Dravet syndrome, while R-H is associated with GEFS+.

Our initial observations suggested that the mutant lines were more difficult to maintain over time than the control lines. Since seizure activity in humans can be associated with premature death and homozygous knock-in mice with the R-H mutation have reduced life span (Tang et al., 2009; Martin et al., 2010), this property was evaluated in the R-C, R-H, and R-R lines maintained at 22°C. Since individual lines from the same genotype displayed similar seizure phenotypes, one line from each genotype was chosen and was used exclusively for the life-span assay and the remainder of the studies. Both the heterozygous R-H and R-C flies display a markedly decreased median survival time of ~60 d when compared with R-R flies with a median survival of 73 d (Fig. 2C; $p < 0.05$, Mantel-Cox log-rank test). This similarity in severity between R-C and R-H was again unexpected because the R-H mutation is associated with the less severe GEFS+ seizure disorder.

Constitutive and heat-induced alterations in firing properties in R1648C and R1648H inhibitory neurons

Although behavioral studies facilitate an exploration of organismal dysfunction in the presence of R1648C and R1648H sodium channel mutations, studying neuronal firing and sodium current activity directly in the neurons of mutated flies is necessary to establish the underlying cellular mechanisms of dysfunction. In both mouse and fly knock-in models of *SCN1A* epilepsy, alterations in sodium currents and excitability have been primarily

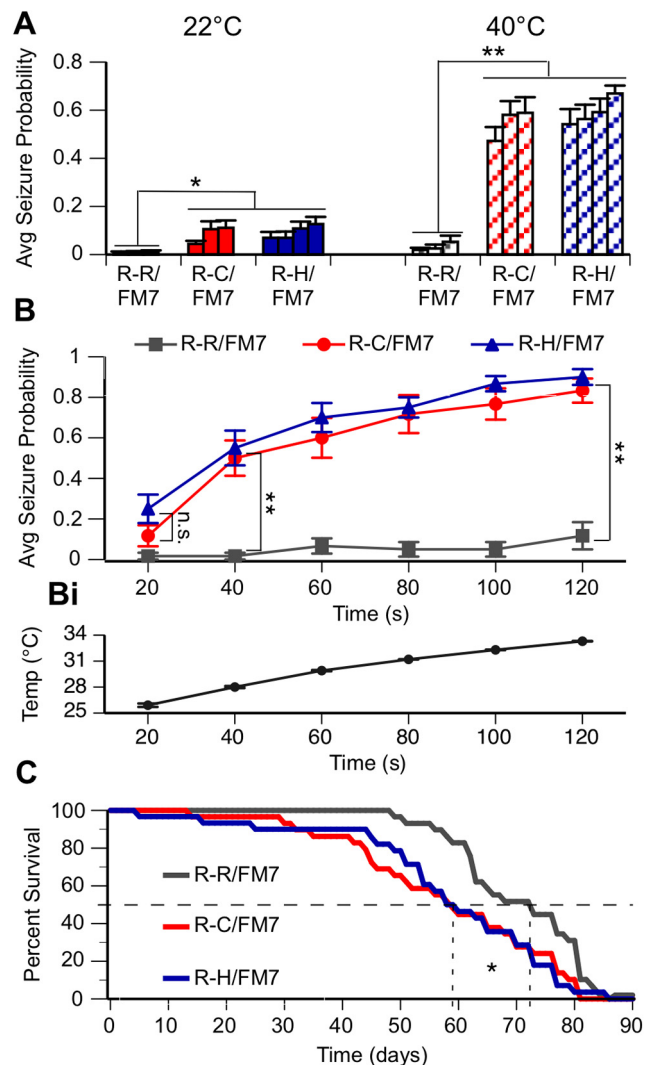


Figure 2. R-C and R-H mutants display seizure-like behavior and reduced life span. **A**, Average seizure probability at any point in a 2 min trial for each independent line (3 R-R/FM7, 3 R-C/FM7, 4 R-H/FM7). **B**, Average seizure probability for each genotype shown at 40°C over time. At both 22°C and 40°C, R-C and R-H mutants have a significantly greater average seizure probability compared with R-R controls. Comparisons between R-C and R-H flies or between lines of one genotype are not significant: * $p < 0.05$; ** $p < 0.01$; two-way ANOVA, Tukey's *post hoc* test. $n > 12$ trials/group. **Bi**, Average temperature inside vial over time of vial in 40°C bath. **C**, Kaplan-Meier survival curve estimates of R-R, R-C, and R-H flies over time. Median survival (50%) line is shown. Median percentage of survival analyzed using the Mantel-Cox log-rank test. Life span is significantly longer in R-R flies compared with R-C and R-H flies. * $p < 0.05$. $n = 30$ flies/genotype.

observed in inhibitory neurons (Ogiwara et al., 2007; Schutte et al., 2016). Therefore, we focused on evaluating the effects of R-C and R-H mutations in inhibitory neurons. Though the site of seizure generation in flies is unknown, LNs in the fly antennal lobes are a readily accessible population of GABAergic inhibitory neurons in the important and well characterized olfactory circuit within the *Drosophila* brain (Seki et al., 2010). To observe

Table 1: Properties of evoked firing in R-R, R-C, and R-H LNs

	R-R/FM7	R-C/FM7	R-H/FM7
Input resistance, G Ω	0.64 \pm 0.02	0.59 \pm 0.10	0.56 \pm 0.05
Cell capacitance, pF	20.32 \pm 2.13	17.72 \pm 2.01	21.13 \pm 4.31
Action potential threshold, mV	22 $^{\circ}$ C: -52.45 \pm 1.99 30 $^{\circ}$ C: -42.71 \pm 3.63 22 $^{\circ}$ C: -50.25 \pm 1.94	22 $^{\circ}$ C: -50.05 \pm 3.81 30 $^{\circ}$ C: -44.50 \pm 5.26 22 $^{\circ}$ C: -51.45 \pm 4.88	22 $^{\circ}$ C: -50.68 \pm 3.68 30 $^{\circ}$ C: -46.40 \pm 2.30 22 $^{\circ}$ C: -50.13 \pm 2.01
Action potential amplitude, mV	22 $^{\circ}$ C: 38.59 \pm 2.70 30 $^{\circ}$ C: 27.41 \pm 3.58 22 $^{\circ}$ C: 33.78 \pm 3.40	22 $^{\circ}$ C: 33.65 \pm 3.02 30 $^{\circ}$ C: 23.32 \pm 3.32 22 $^{\circ}$ C: 35.67 \pm 3.69	22 $^{\circ}$ C: 42.99 \pm 2.91 30 $^{\circ}$ C: 27.08 \pm 3.87 22 $^{\circ}$ C: 38.76 \pm 4.19
Half-width, ms	22 $^{\circ}$ C: 3.0 \pm 0.1 30 $^{\circ}$ C: 2.2 \pm 0.1 22 $^{\circ}$ C: 2.6 \pm 0.1	22 $^{\circ}$ C: 3.2 \pm 0.2 30 $^{\circ}$ C: 2.7 \pm 0.3 22 $^{\circ}$ C: 3.3 \pm 0.3	22 $^{\circ}$ C: 2.8 \pm 0.1 30 $^{\circ}$ C: 2.6 \pm 0.2 22 $^{\circ}$ C: 3.1 \pm 0.2
Max slope	22 $^{\circ}$ C: 24.78 \pm 2.82 30 $^{\circ}$ C: 27.97 \pm 4.67 22 $^{\circ}$ C: 22.18 \pm 3.39	22 $^{\circ}$ C: 22.45 \pm 4.17 30 $^{\circ}$ C: 23.96 \pm 4.88 22 $^{\circ}$ C: 23.72 \pm 5.91	22 $^{\circ}$ C: 29.32 \pm 4.07 30 $^{\circ}$ C: 26.27 \pm 3.75 22 $^{\circ}$ C: 25.31 \pm 3.66
Adaptation ratio (ISI _{first} /ISI _{final} at half-maximal firing)	22 $^{\circ}$ C: 0.49 \pm 0.07 30 $^{\circ}$ C: 0.27 \pm 0.05 22 $^{\circ}$ C: 0.45 \pm 0.06	22 $^{\circ}$ C: 0.44 \pm 0.09 30 $^{\circ}$ C: 0.33 \pm 0.08 22 $^{\circ}$ C: 0.52 \pm 0.09	22 $^{\circ}$ C: 0.56 \pm 0.09 30 $^{\circ}$ C: 0.33 \pm 0.08 22 $^{\circ}$ C: 0.64 \pm 0.06
Peak instantaneous frequency, Hz	22 $^{\circ}$ C: 104.7 \pm 12.4 30 $^{\circ}$ C: 205.3 \pm 22.8 22 $^{\circ}$ C: 81.7 \pm 10.5	22 $^{\circ}$ C: 111.5 \pm 8.3 30 $^{\circ}$ C: 237.8 \pm 42.4 22 $^{\circ}$ C: 90.7 \pm 10.2	22 $^{\circ}$ C: 97.6 \pm 9.2 30 $^{\circ}$ C: 206.8 \pm 35.6 22 $^{\circ}$ C: 83.6 \pm 10.2

Values are the mean \pm SE at 22 $^{\circ}$ C (during the 5 min preheating), at elevated temperature 30 $^{\circ}$ C, and again at 22 $^{\circ}$ C (during the 5 min postcooling). ISI, Interstimulus interval.

neuronal firing and sodium channel activity in these neurons, the whole brain was dissected out of adult flies (Roemmich et al., 2018), dorsal lateral local neurons were identified by their location and morphology, and whole-cell electrophysiological recordings were performed.

Evoked firing was evaluated by subjecting each cell to a series of depolarizing current steps, first at 22 $^{\circ}$ C, following an increase in bathing solution temperature to 30 $^{\circ}$ C, and finally after return of the bath solution to 22 $^{\circ}$ C. A temperature of 30 $^{\circ}$ C was chosen for high-temperature electrophysiology recordings as a temperature at which mutant flies exhibited seizure-like behavior during the water bath assay (Fig. 2Bi), and as the highest recording temperature at which quality cell recordings could be maintained. We measured the threshold, amplitude, half-width, and maximum rise slope for the first evoked action potential in each cell, the spike frequency adaption ratio (at half-maximal firing, first interspike interval over final interspike interval), and peak instantaneous firing frequency at a baseline of 22 $^{\circ}$ C, during heating to 30 $^{\circ}$ C, and after cooling back to 22 $^{\circ}$ C for each genotype (Table 1). There were no significant differences between genotypes for any of these characteristics.

Before heating, the majority of neurons in all three genotypes fired action potentials throughout the 600 ms current step (Fig. 3A,3B,3C). While a similar firing pattern persisted in the control LNs (Fig. 3Ai) at 30 $^{\circ}$ C, heating resulted in sustained depolarizations and cessation of action potential firing in R-C and R-H neurons. In some cases, depolarizations persisted after the current step (poststimulus depolarization; Fig. 3Bi,Ci). Quantitative analysis of these events demonstrates that at 22 $^{\circ}$ C preheating, sustained depolarizations and poststimulus depolarizations occurred in a minority of mutant neurons but were never seen in control neurons (Fig. 3D,E). At 30 $^{\circ}$ C, the incidence of sustained depolarizations increased

dramatically in the mutant neurons such that nearly all of the R-C and R-H neurons exhibited these events (Fig. 3D). In contrast, there was no evidence of sustained depolarization or poststimulus depolarization in the control R-R neurons even at elevated temperature. Poststimulus sustained depolarization incidence increased as well, seen in the majority of mutant neurons at elevated temperature (Fig. 3E). The incidence of sustained depolarizations and poststimulus sustained depolarizations decreased postcooling, and there are no significant differences in these measures between genotypes at the return to 22 $^{\circ}$ C. Importantly, the reversal of the temperature-induced changes in firing demonstrate that these alterations are associated with the mutation and are not simply a result of irreversible damage to the cell induced by heating. There were also differences in the firing frequency and response to temperature increase observed between control and mutant neurons. In control LNs, the firing frequency increased with higher current inputs at both 22 $^{\circ}$ C and 30 $^{\circ}$ C (Fig. 3F,G). At 22 $^{\circ}$ C, R-C LNs displayed increased firing frequency compared with controls. However, for R-C and R-H LNs the firing frequency increased with higher current inputs only at 22 $^{\circ}$ C. At 30 $^{\circ}$ C, particularly for R-H LNs, the firing frequency began to decrease at the larger current steps corresponding with the appearance of sustained depolarizations in which the firing of action potentials stopped but the cell remained depolarized, either for the remainder of the stimulus, or even after the current injection was over (poststimulus sustained depolarizations; Fig. 3F,G; $p < 0.05$, two-way ANOVA).

Although evoked firing frequency in mutant LNs is generally comparable to that in controls, the presence of sustained depolarizations in the mutants could cause overall decreased excitability in interneurons. Therefore, we evaluated the spontaneous activity in LNs in the absence of

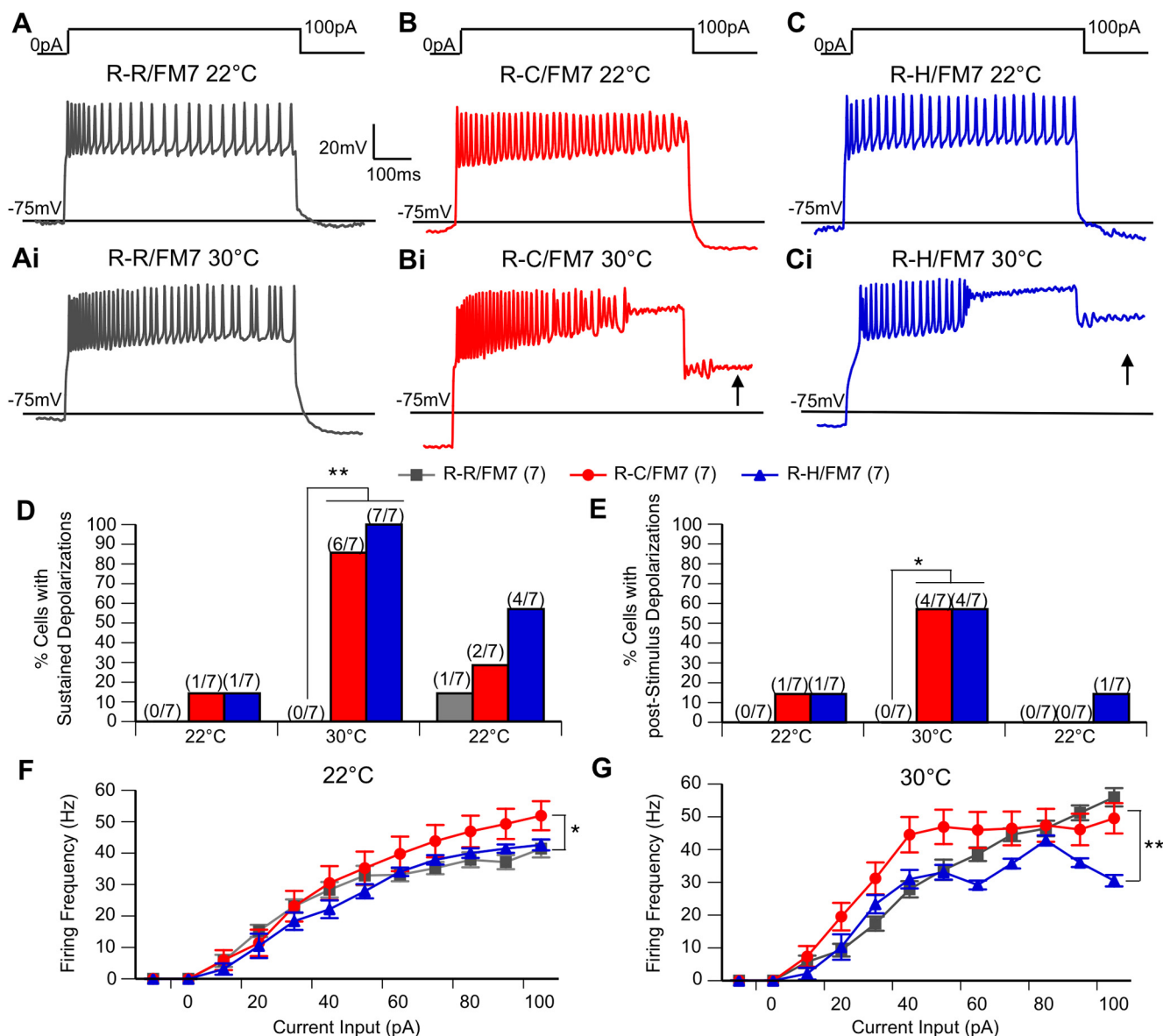


Figure 3. R-C and R-H mutants display sustained depolarizations during evoked firing, even after stimulus has ended. **A–C*i***, Representative trains of action potentials evoked by illustrated stimulus protocol at 22°C (**A,B,C**) and 30°C (**Ai,Bi,Ci**). Arrow indicates the appearance of poststimulus depolarization. **D, E**, Percentage of cells in each genotype with sustained depolarizations during stimulus (**D**) and poststimulus depolarizations (**E**) at 22°C, at 30°C, and after cooling back to 22°C. R-C and R-H mutants have increased the incidence of SDs and poststimulus SDs at 30°C. * $p < 0.05$, ** $p < 0.01$, χ^2 test. Any differences before or after heating are not significant. **F, G**, Average spike frequency shown as a function of current input at ambient temperature (**F**) and elevated temperature (**G**). At 22°C, R-Cs have generally increased firing frequency. At 30°C, R-Hs have generally decreased firing frequency compared with R-Cs. $n = 7$ groups/genotype. * $p < 0.05$; ** $p < 0.01$, two-way ANOVA, with Tukey's *post hoc* test.

any current injection. To explore the effect of temperature, spontaneous neuronal activity in each cell was recorded continuously for 14 min, as follows: 5 min at 22°C, 4 min during heating to 30°C, and 5 min during cooling back down to 22°C. The long traces in [Figure 4A,4B,4C](#) represent typical responses to the heating curve from each of the three genotypes. Demonstrated by the expanded timescale in [Figure 4Ai](#), the traces consist of underlying oscillations in membrane potential with action potentials that fire at the peak of each oscillation. Both control and mutant neurons exhibited a regular burst firing pattern at

22°C ([Fig. 4Ai,4Bi,4Ci](#)) that ceased during heating at ~30°C ([Fig. 4Aii,Bii,Cii](#)). Elevated temperature data were thus taken during the minute of heating between 26°C and 29°C ([Fig. 4D–F](#)). Burst firing similar to that seen before heating resumed following the return to 22°C, as illustrated in [Figure 4A,B,C](#) and [Aiii,Biii,Ciii](#).

There were no differences in the average frequency of bursts, action potential threshold, action potential amplitude, or average number of action potentials within these bursts between genotypes ([Table 2](#)). There was also no significant effect of temperature on any of these properties.

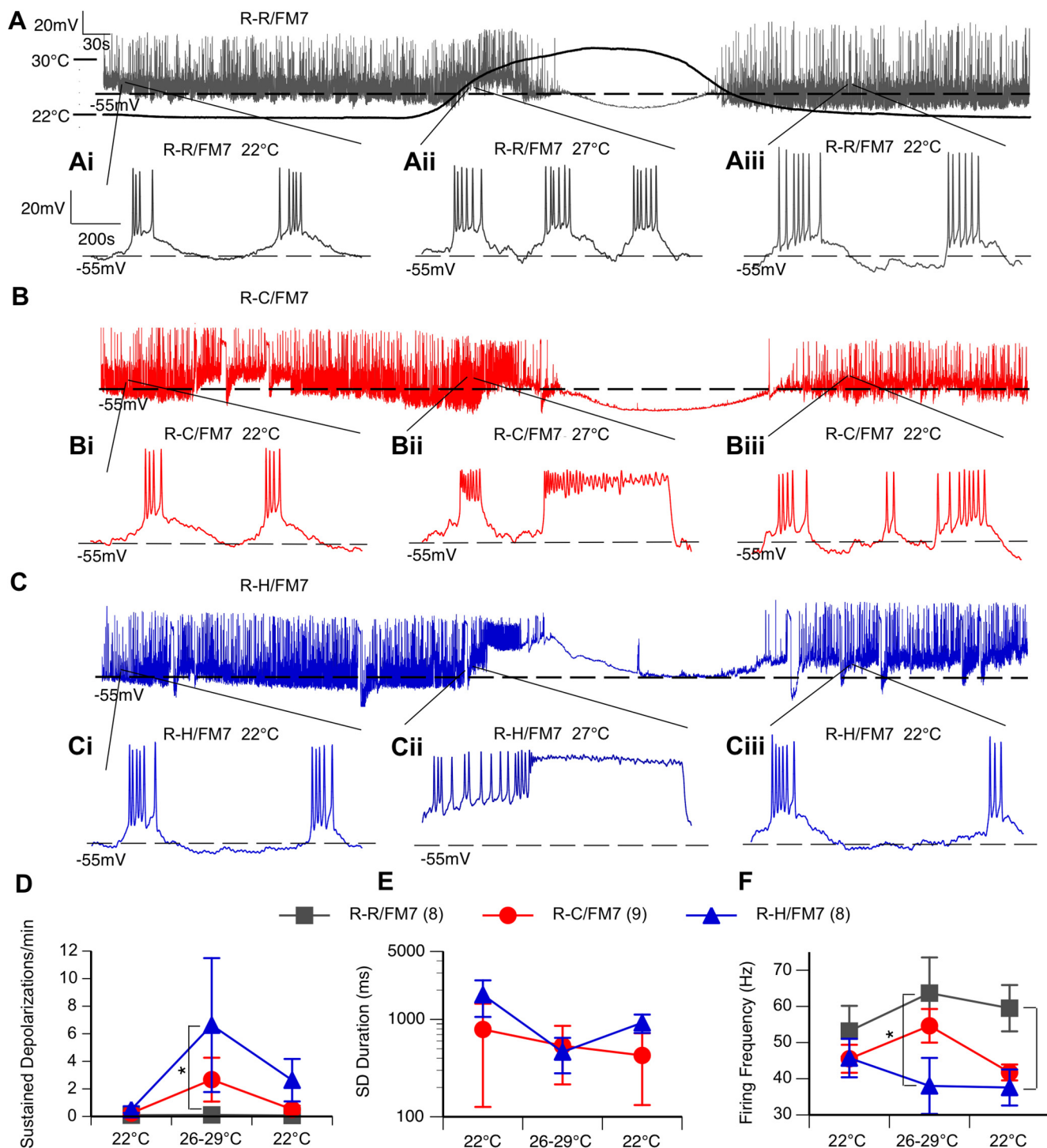


Figure 4. R-C and R-H mutants display spontaneous sustained depolarizations and reduced inhibitory firing frequency at elevated temperatures. **A, B, C,** Representative continuous recording of neuron subjected to heating protocol. Chamber temperature over heating protocol shown on **A. Ai–Aiii, Bi–Biii, Ci–Ciii.** The 1.1 s interval within the labeled part of the temperature curve at 22°C pre-heating (**Ai, Bi, Ci**), 27°C mid-heating (**Aii, Bii, Cii**), and 22°C postcooling (**Aiii, Biii, Ciii**). **D–F,** Average frequency and duration of sustained depolarizations (**D, E**) and firing frequency of action potentials (**F**) during baseline (22°C), heating (26–29°C), and cooling (22°C). $n = 8–9$ cells/genotype. $*p < 0.05$, one-way ANOVA, with Tukey’s *post hoc* test.

However, the occurrence of spontaneous sustained depolarizations (>100 ms in duration) was a characteristic of both mutant lines (Fig. 4Ai–Cii,D,E). While both R-C and R-H mutants occasionally exhibited sustained depolarizations at

room temperature (Fig. 4E), the average frequency of sustained depolarizations was increased at elevated temperatures in both mutants, but the increase was only significantly different in the R-H mutants compared with controls (Fig. 4D;

Table 2: Properties of spontaneous burst firing in R-R, R-C, and R-H LNs

	R-R/FM7	R-C/FM7	R-H/FM7
Burst frequency, Hz	22°C: 0.70 ± 0.24	22°C: 0.90 ± 0.26	22°C: 0.70 ± 0.24
	27°C: 0.63 ± 0.26	27°C: 0.57 ± 0.17	27°C: 0.63 ± 0.26
	22°C: 0.57 ± 0.20	22°C: 0.37 ± 0.16	22°C: 0.57 ± 0.20
Action potential threshold, mV	22°C: -37.77 ± 1.48	22°C: -37.48 ± 1.83	22°C: -38.00 ± 2.45
	27°C: -36.74 ± 1.36	27°C: -37.06 ± 1.77	27°C: -33.81 ± 3.10
	22°C: -36.79 ± 1.66	22°C: -35.95 ± 2.08	22°C: -36.17 ± 2.40
Action potential amplitude, mV	22°C: 35.34 ± 2.35	22°C: 32.27 ± 3.83	22°C: 28.18 ± 5.16
	27°C: 28.29 ± 2.34	27°C: 23.16 ± 3.19	27°C: 23.33 ± 3.87
	22°C: 34.27 ± 3.81	22°C: 28.52 ± 2.57	22°C: 31.33 ± 4.16
Action potentials per burst	22°C: 5.27 ± 0.39	22°C: 5.24 ± 0.56	22°C: 4.79 ± 0.35
	27°C: 5.46 ± 0.38	27°C: 5.05 ± 0.56	27°C: 4.34 ± 0.87
	22°C: 6.17 ± 0.50	22°C: 5.31 ± 0.39	22°C: 5.23 ± 0.49
Resting membrane potential, mV	22°C: -57.1 ± 2.2	22°C: -54.2 ± 2.0	22°C: -54.0 ± 2.6
	27°C: -55.9 ± 1.8	27°C: -52.1 ± 1.3	27°C: -47.8 ± 3.2*
	30°C: -57.4 ± 2.4	30°C: -58.3 ± 4.0	30°C: -47.9 ± 1.9*
	22°C: -54.9 ± 3.2	22°C: -49.5 ± 2.1	22°C: -49.8 ± 1.8

Values are the mean ± SE at 22°C (during the 5 min preheating), "27°C" (during the minute of heating from 26°C to 29°C), and again at 22°C (during the 5 min postcooling).

* R-H mutants have depolarized RMP at elevated temperatures compared with R-R controls; $p < 0.05$, two-way ANOVA.

$p < 0.05$, two-way ANOVA). The duration of the sustained depolarizations was similar in the two mutants, and the duration did not further increase with temperature (Fig. 4E). These prolonged sustained depolarizations contributed to decreased firing frequency within bursts for R-H neurons, particularly at elevated temperature (Fig. 4E; $p < 0.05$, two-way ANOVA).

At elevated temperatures, resting membrane potential (RMP) first depolarized, then hyperpolarized above 30°C as cells ceased firing. While RMP did not fully recover over the length of the recording, R-H neurons displayed a significant depolarizing shift in resting membrane potential at elevated temperatures (Table 2; two-way ANOVA).

Alterations in sodium currents in R1648C and R1648H inhibitory neurons

To evaluate changes in the underlying sodium currents, voltage-clamp recordings were conducted on inhibitory neurons in R-R, R-C, and R-H flies at both ambient and elevated temperatures. Sodium currents were activated by holding the cell below firing threshold at -75 mV and applying a depolarizing voltage step in increasing 5 mV steps. The sodium current waveform is similar in all three cell lines with an initial transient current (INaT) and a smaller persistent current at both 22°C and 30°C (Fig. 5A). The significant delay between the stimulus onset and sodium current activation at all recording temperatures is because of the recording electrode being located on the LN cell body, which is electronically distant from the sodium channels located on the distal axonal segments in fly neurons (Ravenscroft et al., 2020). While there were no genotype- or temperature-induced changes in latency between stimulus and response onset, this recording configuration prohibits adequate space clamp, preventing accurate assessment of the time course of activation and inactivation. Additionally, the transient sodium current amplitude in many neurons showed a decrease during the heating regime (Fig. 5A-C) that did not recover when cooled (Fig. 5D). Therefore, we did not further evaluate

the potential effects of the mutation on peak current amplitude. In contrast, the average activation threshold, defined as the least depolarized voltage step that activates the first current, was stable throughout the recording. This property was significantly more hyperpolarized in R-H compared with R-C and R-R, but there was no effect of temperature (Fig. 5E; $p < 0.05$, two-way ANOVA).

To examine the current deactivation properties, a multistep protocol was used. The cell was first depolarized to a fixed voltage of -5 mV to activate sodium currents and then returned to different resting potentials that varied in 10 mV steps between -95 and -25 mV (Fig. 6A-Ci). Deactivation threshold was defined as the least negative voltage step resulting in current returning to baseline at the end of the stimulus. Both the R-C and R-H neurons had a significant hyperpolarizing shift in deactivation threshold (-55 mV) compared with that of R-R control neurons (-40 mV; Fig. 6D; $p < 0.05$, two-way ANOVA). There was no effect of temperature on the deactivation. The deactivation data indicate that mutant sodium channels in inhibitory neurons are open over a wider voltage range, resulting in increased influx of sodium ions for the same stimulus in mutants compared with controls. However, unlike the abnormal firing properties, the sodium current alterations in deactivation were present at similar levels at both room temperature and high temperature.

Discussion

For patients with genetic epilepsy, the connection between a specific mutation and behavioral symptoms is largely unknown. Our study focused on *SCN1A*-mediated genetic epilepsies that arise from mutations at the same amino acid position (1648). The R-C mutation is associated with the more severe disorder Dravet syndrome, while the R-H mutation is associated with the milder disorder GEFS+ (Baulac et al., 1999; Ohmori et al., 2002; Striano et al., 2008; Escayg and Goldin, 2010). This leads

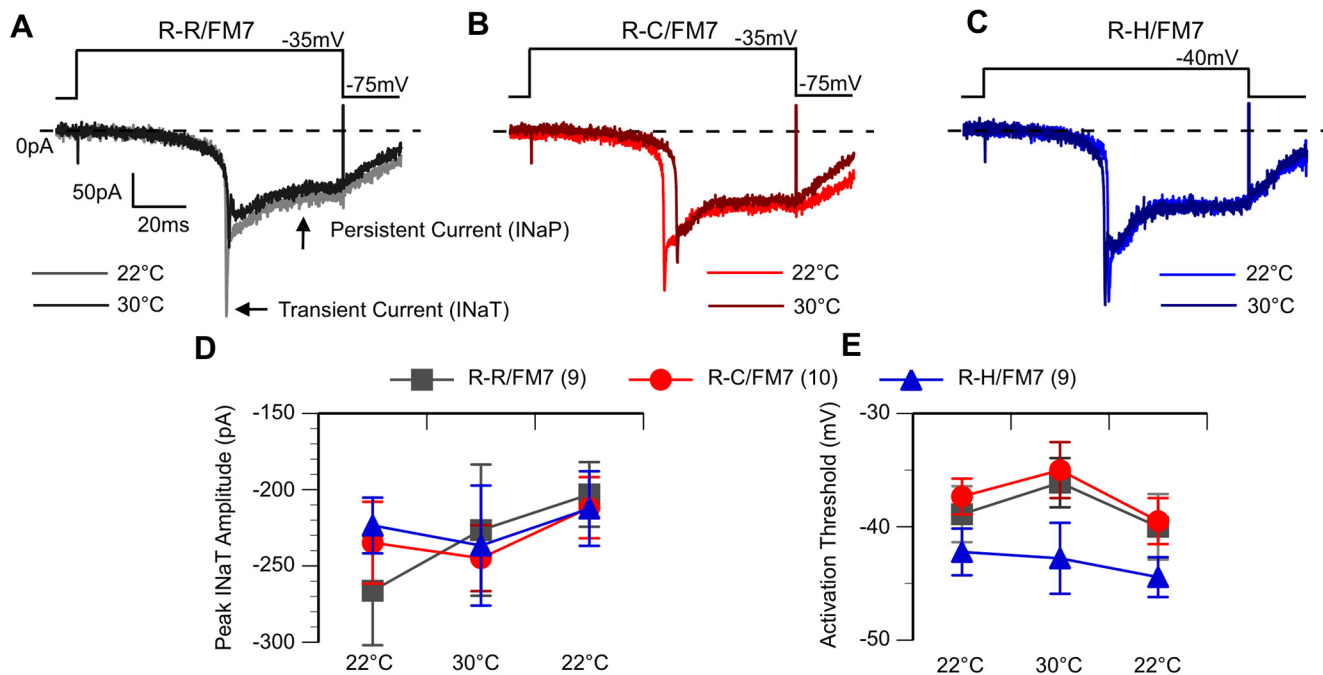


Figure 5. R-H neurons exhibit hyperpolarized sodium current activation threshold. **A–C**, Voltage step-elicited currents at 22°C and 30°C. The first voltage step to elicit current shown. Cells exhibit both an initial transient and then a persistent current. **D**, Average peak INaT amplitude. **E**, Average activation threshold at 22°C, 30°C, and following cooling (second threshold at 22°C). R-H mutants have an average activation threshold hyperpolarized to R-C and R-R, but no effect by temperature. * $p < 0.05$, two-way ANOVA, with Tukey's *post hoc* test.

to the question of whether the differences in severity arise from distinct changes in channel function in the two mutants or whether similar channel changes result in different behavioral outcomes depending on genetic background. Using independently generated *Drosophila* lines carrying either the R-H or R-C mutation, we were able to compare the effects of the mutations on cellular physiology and organismal behavior in an identical genetic background. We observed that both R1648C and R1648H mutations resulted in largely similar spontaneous and temperature-sensitive seizure activity, decreased life span, and several patterns of cellular dysfunction. This suggests that it is likely that genetic background contributes to difference in severity in patients with these mutations.

While animal behavior was essentially indistinguishable between R-C and R-H lines, there were instances of significant electrophysiological alterations in one, but not both, mutant lines. R-C mutants displayed increased evoked firing frequency at ambient temperatures. R-H mutants displayed decreased evoked firing frequency at elevated temperatures, decreased spontaneous firing frequency at elevated temperatures, depolarized resting membrane potential at elevated temperatures, and a constitutively hyperpolarized sodium channel activation threshold. While R-H local neurons displayed more significant differences from controls than R-C local neurons, these cellular changes surprisingly did not result in a more severe behavioral profile. It seems that the changes shared by both mutant lines—a hyperpolarized sodium current deactivation threshold and increased incidence of sustained depolarizations seen

most clearly with evoked firing—have the greatest effect on the behavioral phenotypes in R-C and R-H *SCN1A Drosophila*.

Additionally, many of the changes attributed to the mutation were observed in only a minority of mutant neurons, such as the appearance of sustained depolarizations in only one of seven LNs in each of the mutant lines at 22°C. This is most likely because of this being a low-frequency event in any one neuron at this temperature. Thus, there is a low probability that an event will be detected during the one or two trials during which the data are collected. If this were true, then increasing the number of trials in each cell at 22°C would increase the percentage of LNs in which at least one event was detected. At high temperature, the majority of neurons in both mutant lines exhibit these events, demonstrating that the alteration that leads to these existed in all the neurons but was only manifest at high temperature. It is possible that larger sample sizes could even out some of these smaller changes between R-C and R-H mutants. It is also possible that there are different subclasses of LNs with distinct distributions of sodium channels in the cell, such that some are more susceptible to the mutation resulting in sustained depolarizations at 22°C.

Given that the R-C DS mutation did not result in increased behavioral severity in *Drosophila*, and, given that several smaller changes in R-H sodium channel physiology did not result in increased seizures in *Drosophila*, there could be other background alterations that contribute to disease phenotype in humans. A role for genetic background in contributing to disease phenotype is not

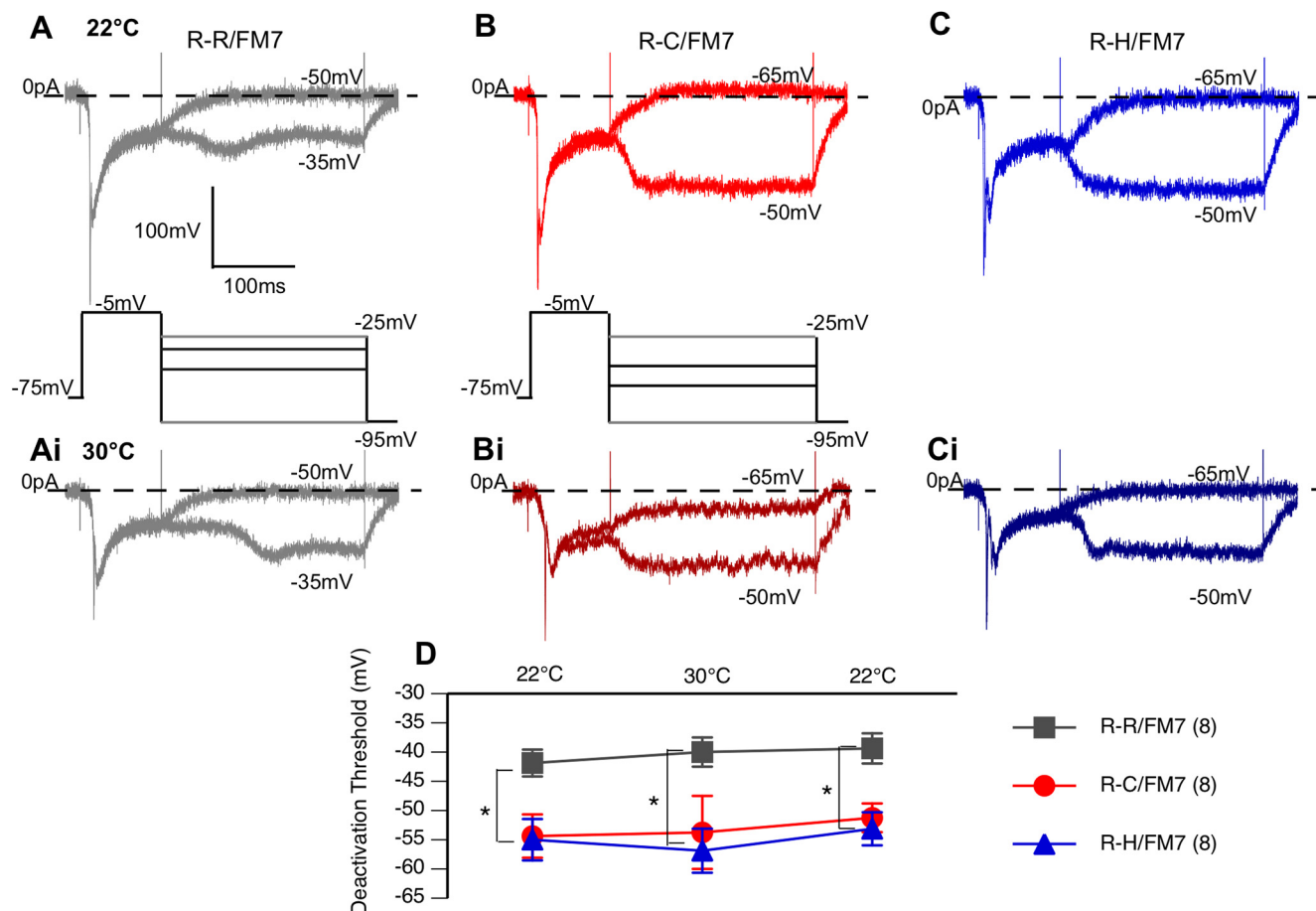


Figure 6. R-C and R-H neurons exhibit hyperpolarized sodium current deactivation threshold. **A–Ci**, Voltage-step sodium channel currents for deactivation at room temperature (22°C; **A, B, C**) and high temperature (30°C; **Ai, Bi, Ci**), with the current steps in bold. Cells subjected to a multistep protocol, as shown. Selected sweeps shown to illustrate differences in deactivation properties. **D**, Average deactivation threshold at 22°C, 30°C, and after cooling back to 22°C. R-C and R-H mutants had hyperpolarized deactivation threshold compared with R-Rs. * $p < 0.05$, two-way ANOVA, with Tukey's *post hoc* test.

inconsistent with clinical data indicating that the severity of seizure disorders can vary even between individuals with the same *SCN1A* mutation. For example, in a single multigenerational French family, R1648H was identified in 13 individuals whose symptoms ranged from experiencing a few febrile seizures in early childhood to intractable epilepsy throughout adulthood associated with moderate or severe intellectual disability (Baulac et al., 1999). This suggests that interplay between the mutation and other factors are involved in determining disease severity. This could include genetic background or environmental/developmental differences. Recent studies in human induced pluripotent stem cell-derived neurons demonstrate that the GEFS+ causing the K1270T mutation has differential effects on sodium currents and neuronal firing properties in different genetic backgrounds (Xie et al., 2020). Transgenic *Drosophila* will be valuable in assessing the interaction between specific epilepsy causing missense mutations and genetic background in manifestation not only of cellular dysfunction but also of behavioral phenotypes.

Previous studies using mice have been important in understanding cellular mechanisms associated with several epilepsy-causing sodium channel mutations,

including a knock-in model of the missense mutation R1648H (Tang et al., 2009; Martin et al., 2010). While the phylogenetic distance between humans and flies is greater than that between humans and mice, there are some distinct advantages to conducting parallel studies in *Drosophila*. The DNA sequences that encode voltage-gated sodium channels are highly conserved between flies and mammals, but *Drosophila* has only one voltage-gated sodium channel gene (*para*; Loughney et al., 1989; O'Dowd et al., 1989). In contrast, there are nine different voltage-gated sodium channel α -subunit isoforms in mice and other mammals, three of which are highly expressed in the nervous system (*SCN1A*, *SCN2A*, and *SCN8A*; Catterall, 2017). These isoforms can and do interact in models of patient epilepsies. For example, mice that were double heterozygous mutants for *SCN1A* and *SCN8A* had restored seizure susceptibility and life span compared with mice heterozygous for only *SCN1A* (Martin et al., 2007). In addition, creation and maintenance of multiple different mouse lines carrying distinct missense mutations in different genetic backgrounds is a time- and resource-intensive proposition. In the present study, the transgenic flies used were created using a two-step CRISPR/Cas9

gene-editing method that involved introducing a visible marker in the first step. This resulted in efficient detection of multiple founder flies with the desired mutations in an identical genetic background. In addition, the low cost of maintaining multiple lines, including control substitutions in addition to the mutants, was an attractive reason to use *Drosophila*. While there is only one sodium channel gene in flies, worm sequences not present elsewhere in the genome flanked the replacement sequence in the first step targeted for excision in the second step. Sequencing through the excision sites revealed identical sequences where additional mutations were most likely to be introduced, decreasing any concerns about off-target effects. Further confirmation of the specificity of mutants could be done by determining whether a genetic rescue, such as using CRISPR to replace the mutation in the R-C or R-H lines, restores wild-type function.

Analysis of two previous *Drosophila* knock-in models of *SCN1A* missense mutations, one causing Dravet syndrome (S1231R) and one causing GEFS+ (K1270T) exhibited alterations in sodium current and firing properties only in animals homozygous for the mutations (Schutte et al., 2016). Heterozygotes exhibited moderate seizure behavior at high temperatures but no obvious alterations in neuronal activity (Sun et al., 2012; Schutte et al., 2014). Therefore, the finding that fly lines homozygous for the R-C or R-H mutations were lethal, and that heterozygotes displayed significant seizure activity and reduced life span, was somewhat unexpected. The location of the 1648 mutation on the voltage-sensing region of *SCN1A*, which is particularly crucial for inactivation, may explain this increased level of severity compared with the previously examined DS (S1231R) and GEFS+ (K1270T) mutations. The R-C mutation substitutes a neutral amino acid for a positive gating charge. R-H conserves charge, but adds steric hindrance. Interestingly, in a study investigating the effects of an R-H mutation in the S4 segment of domain IV of a human skeletal sodium channel expressed in HEK cells, changing the pH to protonate the histidine did not change the functional alterations of the mutation (mixed inactivation defects; Alekov et al., 2000). This suggests that the steric effects of the histidine side chain may be the primary molecular culprit behind the phenotype associated with the R1648H mutation. Changing the size and/or charge of one of the gating charges on the S4 segment in domain IV likely affects its ability to exchange ion-binding partners with the environment. Given our observations that R1648H or R1648C mutations in inhibitory neurons result in sustained depolarizations and require repolarization to more negative voltages to deactivate the sodium current, both mutations likely impact the ability of the S4 segment in domain IV to move back into place, closing the channel (Ahern et al., 2016). The S4 segment in domain IV of *SCN1A* may therefore play a previously undescribed role in deactivation, as well as inactivation.

The R-C and R-H inhibitory neurons exhibited heat-induced alterations in neuronal firing properties including the appearance of sustained depolarizations, poststimulus sustained depolarizations, and decreased firing frequency during both evoked and spontaneous activity.

The temperature-dependent aspect of these changes suggests that they are likely to contribute to the heat-induced increases in seizure activity. Analysis of the underlying sodium currents in mutant neurons revealed a hyperpolarized deactivation threshold in R-C and R-H neurons even at room temperature. This is consistent with the R-H and R-C sodium channels being more difficult to close once activated, which would result in increased ion flow because of longer channel openings and/or channel opening to a greater extent. Dravet syndrome has most often been attributed to loss-of-function mutations, as was the case in the previous S1231R Dravet syndrome knock-in model in *Drosophila*. The current result indicates that mutations resulting in increased sodium influx can also contribute to Dravet syndrome. However, unlike the abnormal firing properties, mutant sodium current alterations were present at both room temperature and high temperature. This suggests that the increased inward flow of sodium ions is not sufficient to trigger the sustained depolarizations and reduced firing frequency seen at high temperature by themselves but through an interaction with a different and as yet unidentified heat-induced change.

One heat-induced aspect of cellular physiology that could be involved are calcium currents. Previous studies have found that calcium currents exhibit increased conductance at elevated temperature in rat brain slices (Radzicki et al., 2013). Previous studies have shown that calcium currents also contribute to membrane depolarization in *Drosophila* neurons, including in the neurons located in the adult fly brain (Peng and Wu, 2007; Gu et al., 2009). In projection neurons in the adult antennal lobes, the calcium currents have both a transient and sustained component. The *alpha1T* gene encodes a Ca_v3 -type calcium channel mediating the transient current (Iniguez et al., 2013), and the *cac* gene encodes a Ca_v2 -type calcium channel mediating the sustained current (Gu et al., 2009). If similar calcium currents are present in antennal lobe LNs, it is possible that potassium currents are sufficient in most cases for repolarizing the action potential, even with the increased sodium conductance in the mutants because of hyperpolarized deactivation of the channels at room temperature, resulting only rarely in sustained depolarizations. However, at high temperature an increased magnitude of calcium currents, in conjunction with an increased magnitude of the sodium currents in the mutants, could more severely impede the ability of potassium currents to repolarize effectively, resulting in more sustained depolarizations. Future studies, taking advantage of both forward and reverse genetic approaches that are relatively easy to perform in *Drosophila*, will be important in identifying the interacting variables associated with the heat-induced change in firing properties.

In the mouse model, the primary effect of the R1648H mutation is on inhibitory neurons, where a decrease in inhibitory neuron activity can lead to unbalanced overexcitability in the brain and seizures (Martin et al., 2010). The present study focused exclusively on LNs, inhibitory neurons in the antennal lobe that process olfactory information in *Drosophila*. While the para sodium channel in

Drosophila undergoes extensive alternative splicing (Loughney et al., 1989; Lin et al., 2009), the R1648 amino acid is located in an obligate exon, so mutations at this site will be present in all neurons (Lin et al., 2009; Ravenscroft et al., 2020). Therefore, it will be interesting in future studies to also evaluate the effect of this mutation on excitatory neurons in the same antennal lobe circuit.

Together, the results of the present study demonstrate that R1648C and R1648H *SCN1A* mutations result in improper deactivation in inhibitory neuron sodium channels in *Drosophila*. The incomplete closing and/or extended opening of the sodium channels could cause an inappropriate influx of sodium ions, which in turn causes impaired inhibitory neuron firing. Neuronal network activity is based on a balance between inhibitory and excitatory activity, and with the impaired firing of inhibitory neurons, the balance is tilted in favor of overexcitation, which can lead to seizures. CRISPR-generated *Drosophila* lines represent low-cost platforms that can be used to elucidate neuronal mechanisms of seizure generation and guide the development of new patient-specific therapies for epilepsy. Patient-specific studies using model organisms, including *Drosophila*, will be an important tool in our quest to improve our mechanistic understanding of genetic epilepsy and develop better patient-specific treatments.

References

- Ahern CA, Payandeh J, Bosmans F, Chanda B (2016) The hitchhiker's guide to the voltage-gated sodium channel galaxy. *J Gen Physiol* 147:1–24.
- Alekov A, Rahman MM, Mitrovic N, Lehmann-Horn F, Lerche H (2000) A sodium channel mutation causing epilepsy in man exhibits subtle defects in fast inactivation and activation in vitro. *J Physiol* 529:533–540.
- Baulac S, Gourfinkel-An I, Picard F, Rosenberg-Bourgin M, Prud'homme JF, Baulac M, Brice A, LeGuern E (1999) A second locus for familial generalized epilepsy with febrile seizures plus maps to chromosome. *Am J Hum Genet* 65:1078–1085.
- Catterall WA (2017) Forty years of sodium channels: structure, function, pharmacology, and epilepsy. *Neurochem Res* 42:2495–2504.
- Chanda B, Bezanilla F (2002) Tracking voltage-dependent conformational changes in skeletal muscle sodium channel during activation. *J Gen Physiol* 120:629–645.
- Chen LQ, Santarelli V, Horn R, Kallen RG (1996) A unique role for the S4 segment of domain 4 in the inactivation of sodium channels. *J Gen Physiol* 108:549–556.
- Escayg A, Goldin AL (2010) Sodium channel *SCN1A* and epilepsy: mutations and mechanisms. *Epilepsia* 51:1650–1658.
- Goldschen-Ohm MP, Capes DL, Oelstrom KM, Chanda B (2013) Multiple pore conformations driven by asynchronous movements of voltage sensors in a eukaryotic sodium channel. *Nat Commun* 4:1350.
- Gu H, Jiang SA, Campusano JM, Iniguez J, Su H, Hoang AA, Lavian M, Sun X, O'Dowd DK (2009) Cav2-type calcium channels encoded by *cac* regulate AP-independent neurotransmitter release at cholinergic synapses in adult *Drosophila* brain. *J Neurophysiol* 101:42–53.
- Iniguez J, Schutte SS, O'Dowd DK (2013) Ca_v3-type α 1T calcium channels mediate transient calcium currents that regulate repetitive firing in *Drosophila* antennal lobe PNs. *J Neurophysiol* 110:1490–1496.
- Kahlig KM, Lepist I, Leung K, Rajamani S, George AL Jr (2010) Ranolazine selectively blocks persistent current evoked by epilepsy-associated Na_v1.1 mutations. *Br J Pharmacol* 161:1414–1426.
- Lin WH, Wright DE, Muraro NI, Baines RA (2009) Alternative splicing in the voltage-gated sodium channel *DmNav* regulates activation, inactivation, and persistent current. *J Neurophysiol* 102:1994–2006.
- Lossin C, Wang DW, Rhodes TH, Vanoye CG, George AL (2002) Molecular basis of an inherited epilepsy. *Neuron* 34:877–884.
- Loughney K, Kreber R, Ganetzky B (1989) Molecular analysis of the para locus, a sodium channel gene in *Drosophila*. *Cell* 58:1143–1154.
- Martin MS, Tang B, Papale LA, Yu FH, Catterall WA, Escayg A (2007) The voltage-gated sodium channel *Scn8a* is a genetic modifier of severe myoclonic epilepsy of infancy. *Hum Mol Genet* 16:2892–2899.
- Martin MS, Dutt K, Papale LA, Dubé CM, Dutton SB, de Haan G, Shankar A, Tufik S, Meisler MH, Baram TZ, Goldin AL, Escayg A (2010) Altered function of the *SCN1A* voltage-gated sodium channel leads to γ -aminobutyric acid-ergic (GABAergic) interneuron abnormalities. *J Biol Chem* 285:9823–9834.
- O'Dowd DK, Germeraad SE, Aldrich RW (1989) Alterations in the expression and gating of *Drosophila* sodium channels by mutations in the para gene. *Neuron* 2:1301–1311.
- Ogiwara I, Miyamoto H, Morita N, Atapour N, Mazaki E, Inoue I, Takeuchi T, Itohara S, Yanagawa Y, Obata K, Furuichi T, Hensch TK, Yamakawa K (2007) Na_v1.1 localizes to axons of parvalbumin-positive inhibitory interneurons: a circuit basis for epileptic seizures in mice carrying an *Scn1a* gene mutation. *J Neurosci* 27:5903–5914.
- Ohmori I, Ouchida M, Ohtsuka Y, Oka E, Shimizu K (2002) Significant correlation of the *SCN1A* mutations and severe myoclonic epilepsy in infancy. *Biochem Biophys Res Comm* 295:17–23.
- Pan X, Li Z, Zhou Q, Shen H, Wu K, Huang X, Chen J, Zhang J, Zhu X, Lei J, Xiong W, Gong H, Xiao B, Yan N (2018) Structure of the human voltage-gated sodium channel Na_v1.4 in complex with β 1. *Science* 362:eaau2486.
- Peng IF, Wu CF (2007) *Drosophila* cacophony channels: a major mediator of neuronal Ca²⁺ channels and a trigger for K⁺ channel homeostatic regulation. *J Neurosci* 27:1072–1081.
- Ravenscroft TA, Janssens J, Lee P-T, Tepe B, Marcogliese PC, Makhzami S, Holmes TC, Aerts S, Bellen HJ (2020) *Drosophila* voltage-gated sodium channels are only expressed in active neurons and are localized to distal axonal initial segment-like domains. *J Neurosci* 40:7999–8024.
- Radzicki D, Yau HJ, Pollema-Mays SL, Mlsna L, Cho K, Koh S, Martina M (2013) Temperature-sensitive Cav1.2 calcium channels support intrinsic firing of pyramidal neurons and provide a target for the treatment of febrile seizures. *J Neurosci* 33:9920–9931.
- Rhodes TH, Lossin C, Vanoye CG, Wang DW, George AL Jr (2004) Noninactivating voltage-gated sodium channels in severe myoclonic epilepsy of infancy. *Proc Natl Acad Sci U S A* 101:11147–11152.
- Roemmich AJ, Schutte SS, O'Dowd DK (2018) Ex vivo whole-cell recordings in adult *Drosophila* brain. *Bio Protoc* 8:e2467.
- Schutte RJ, Schutte SS, Algara J, Barragan EV, Gilligan J, Staber C, Savva YA, Smith MA, Reenan R, O'Dowd DK (2014) Knock-in model of Dravet syndrome reveals a constitutive and conditional reduction in sodium current. *J Neurophysiol* 112:903–912.
- Schutte SS, Schutte RJ, Barragan EV, O'Dowd DK (2016) Model systems for studying cellular mechanisms of *SCN1A*-related epilepsy. *J Neurophysiol* 115:1755–1766.
- Seki Y, Rybak J, Wicher D, Sachse S, Hansson BS (2010) Physiological and morphological characterization of local interneurons in the *Drosophila* antennal lobe. *J Neurophysiol* 104:1007–1019.
- Shen H, Zhou Q, Pan X, Li Z, Wu J, Yan N (2017) Structure of a eukaryotic voltage-gated sodium channel at near-atomic resolution. *Science* 355.
- Spampanato J, Escayg A, Meisler MH, Goldin AL (2001) Functional effects of two voltage-gated sodium channel mutations that cause

- generalized epilepsy with febrile seizures plus type 2. *J Neurosci* 21:7481–7490.
- Striano P, Striano S, Minetti C, Zara F (2008) Refractory, life-threatening status epilepticus in a 3-year-old girl. *Lancet Neurol* 7:278–284.
- Sun L, Gilligan J, Staber C, Schutte RJ, Nguyen V, O'Dowd DK, Reenan R (2012) A knock-in model of human epilepsy in *Drosophila* reveals a novel cellular mechanism associated with heat-induced seizure. *J Neurosci* 32:14145–14155.
- Tang B, Dutt K, Papale L, Rusconi R, Shankar A, Hunter J, Tufik S, Yu FH, Catterall WA, Mantegazza M, Goldin AL, Escayg A (2009) A BAC transgenic mouse model reveals neuron subtype-specific effects of a generalized epilepsy with febrile seizures plus (GEFS+) mutation. *Neurobiol Dis* 35:91–102.
- Vanoye CG, Lossin C, Rhodes TH, George AL Jr (2006) Single-channel properties of human $Na_v1.1$ and mechanism of channel dysfunction in *SCN1A*-associated epilepsy. *J Gen Physiol* 127:1–14.
- Xie Y, Ng NN, Safrina OS, Ramos CM, Ess KC, Schwartz PH, Smith MA, O'Dowd DK (2020) Isogenic human iPSC pairs reveal a neuronal subtype-specific and genetic background-independent mechanism of *SCN1A* epilepsy. *Neurobiol Dis* 134:104627.