

# Lawrence Berkeley National Laboratory

## Recent Work

### Title

COURSE IN THE THEORY AND DESIGN OF PARTICLE ACCELERATORS - LECTURE IV

### Permalink

<https://escholarship.org/uc/item/17w2b6n6>

### Authors

Brobeck, W.M.  
Callahan, O.  
Chesterman, A.

### Publication Date

1952-11-26

## **DISCLAIMER**

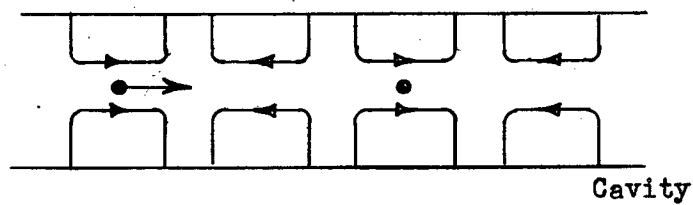
This document was prepared as an account of work sponsored by the United States Government. While this document is believed to contain correct information, neither the United States Government nor any agency thereof, nor the Regents of the University of California, nor any of their employees, makes any warranty, express or implied, or assumes any legal responsibility for the accuracy, completeness, or usefulness of any information, apparatus, product, or process disclosed, or represents that its use would not infringe privately owned rights. Reference herein to any specific commercial product, process, or service by its trade name, trademark, manufacturer, or otherwise, does not necessarily constitute or imply its endorsement, recommendation, or favoring by the United States Government or any agency thereof, or the Regents of the University of California. The views and opinions of authors expressed herein do not necessarily state or reflect those of the United States Government or any agency thereof or the Regents of the University of California.

Course in the Theory and  
Design of Particle Accelerators

LECTURE IV  
November 26, 1952

W. M. Brobeck  
(Notes by: O. Callahan and A. Chesterman)

Standing Wave Electron Linear Accelerator



The machine at Massachusetts Institute of Technology is driven at 3,000 Mega-cycles frequency and the problem of driving and phasing the cavity has been great.

Alternate Schemes of Building Synchrotrons

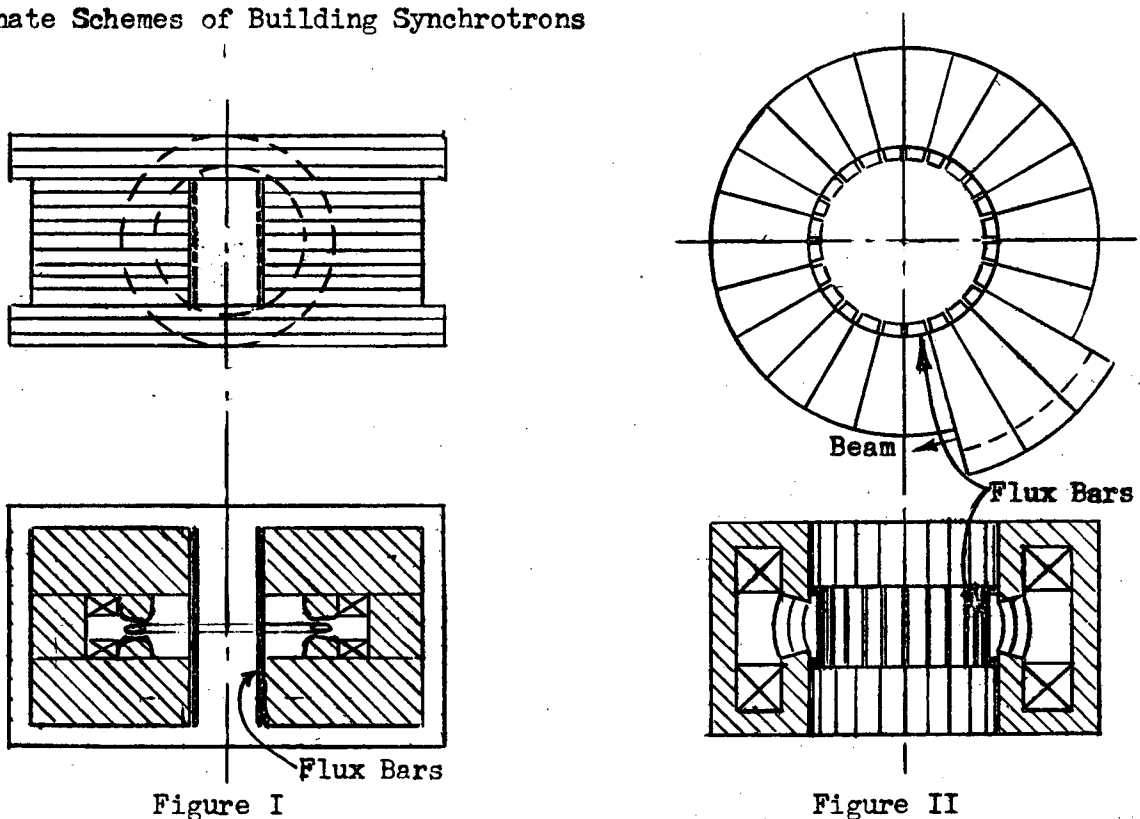
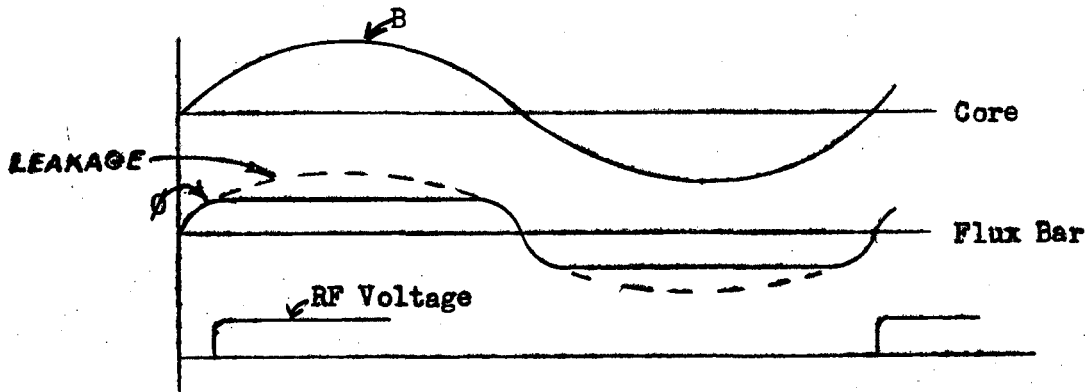


Figure I

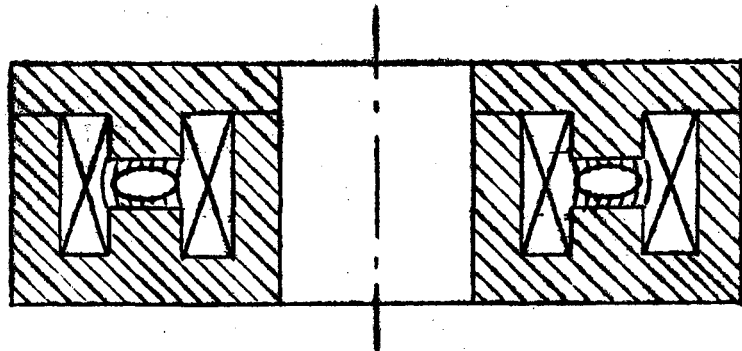
Figure II

The synchrotron at Berkeley is as shown in Figure 1, and although less economical to build than the one of Figure 2, it does present less of a problem of getting out the beam since the sides are open. Lengthening some segments of the magnet in Figure 2 leaves a gap through which the beam could be fed. This type being used at M.I.T., Cornell, and Purdue University.

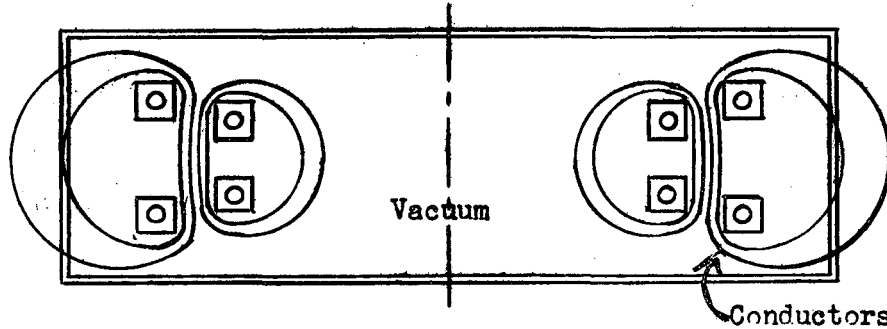
Betatron Injection into Synchrotron is generally used to accelerate from 100 KV to 2 MEV energy. The flux through the flux bars must be in the same direction as that through the core.



Frequency Modulated Synchrotron at University of Michigan



Synchrotron without Iron Core. General Electric Company.

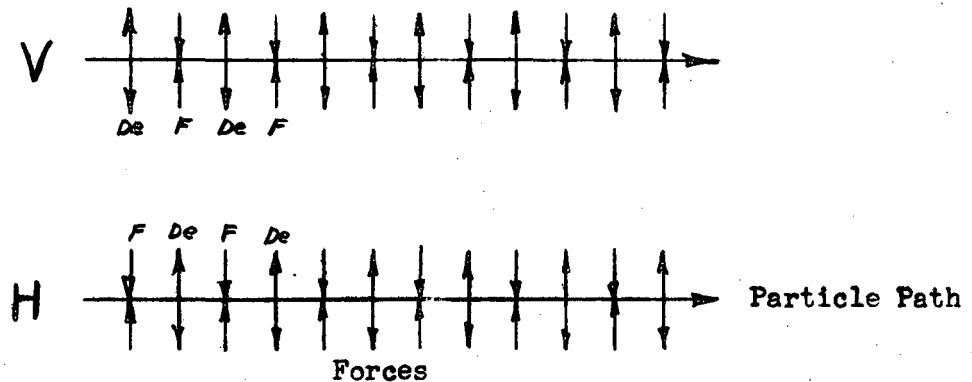


Chief difficulty with this type is that the mechanical forces on the conductors are high and present a problem in supporting them.

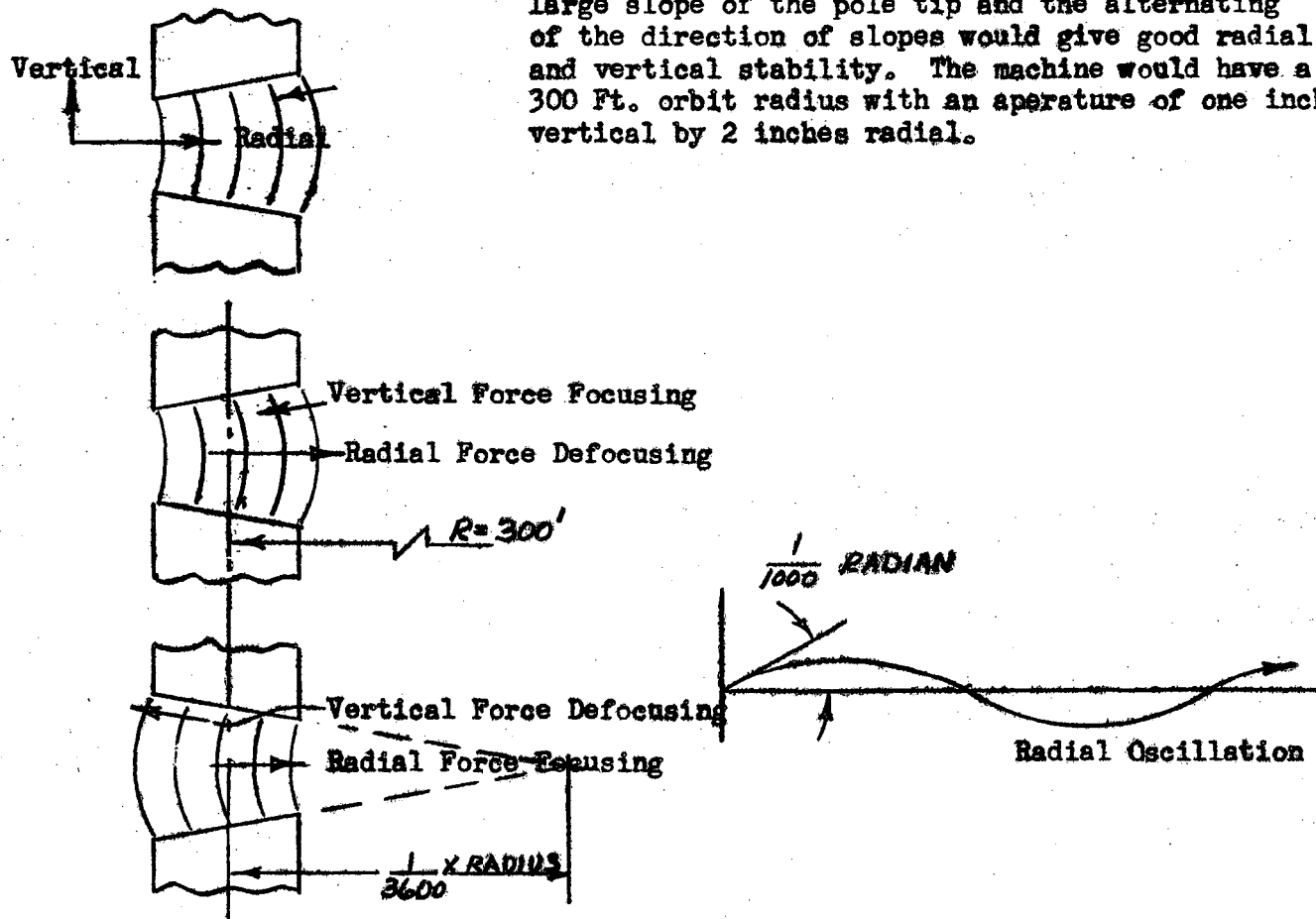
Strong Focusing Synchrotron as proposed by Brookhaven Institute.

Since the mass of the machine varies approximately as the cube of the radius of particle orbit and the energy varies approximately with the radius, it becomes apparent that a machine in the Billion Electron Volt range will be quite large. One method of reducing its cost would be to use a small aperture. The machine at Berkeley has a 1' x 4' aperture because of the weakness of focusing. A smaller aperture would reduce the amount of iron in the magnet. The aperture size is some percent of the wave length of lateral oscillations, and by reducing the amplitude and wave length of these oscillations, the aperture can be reduced. This is accomplished by use of strong focusing.

Strong focusing is accomplished by alternating forces of the magnetic field due to alternating slopes of the pole tips.

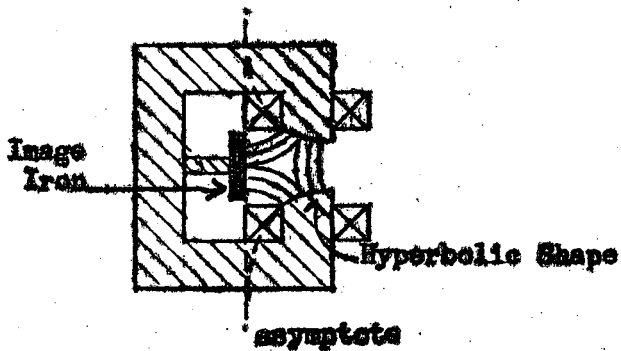


Limit of pole tip slope in an ordinary synchrotron is when the magnetic lines start to become spherical. At this point, the field starts to drop off too fast radially. This results in good vertical stability but poor radial stability. The proposed strong focus machine would require a large slope of the pole tip and the alternating of the direction of slopes would give good radial and vertical stability. The machine would have a 300 Ft. orbit radius with an aperture of one inch vertical by 2 inches radial.

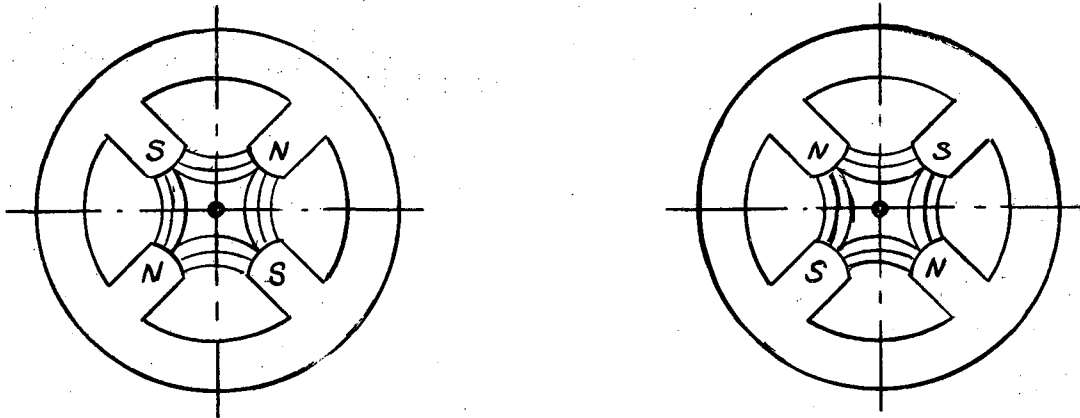


With such a small aperture, the acceleration must occur during the linear accelerator phase stable region at low energy and the synchrotron phase stable region at high energy.

The magnet would use image iron to give a constant field with approximately 20,00 gauss at minimum gap and approximately 11,000 gauss average field.

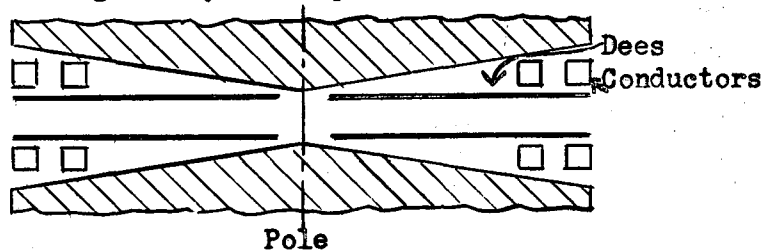


A scheme has been proposed for using separate focusing magnets for passing through the critical energy at which phase stability transition occurs, i.e., from linear accelerator to synchrotron phase stability. The focusing magnets would give on the average a zero field and the turning of the particle would have to be done with another field between the focusing magnets. When the unstable energy is nearly reached, the focusing magnet strength would be reduced while the turning magnet field was held constant. This would reduce the unstable energy below the particle energy and acceleration could continue in the synchrotron phase stable region.

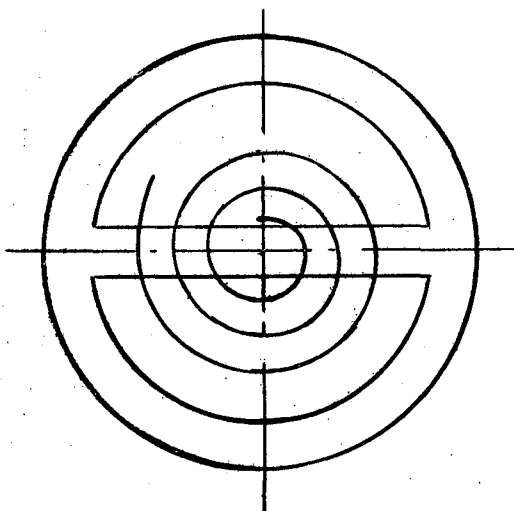


Cyclo Synchrotron--Australian

This machine uses a Cyclotron Magnet and Dees but has a pulsed magnetic field at outer radius. The pulsed magnetic field comes from pulsed current in large circumferential conductors energized by a Homopolar Generator.



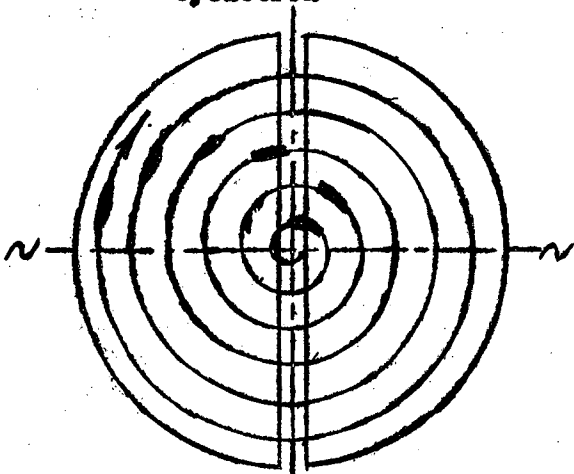
Microtron (Electron Cyclotron)--Canada



The rotation time increases one cycle for each half turn of the particle. This machine operates at very high frequency and in the relativistic region only. No electron source is needed other than discharge from the Dees.

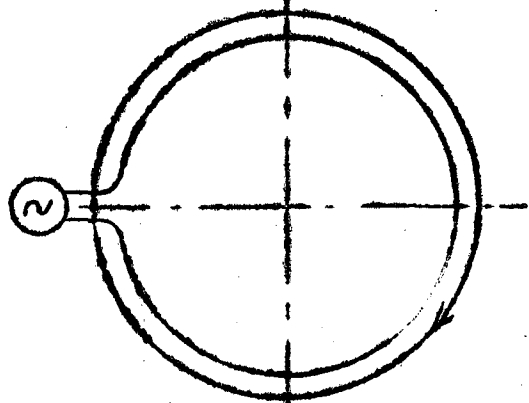
Drawing showing particle distribution at any instant in the various machines.

Constant Frequency  
Cyclotron



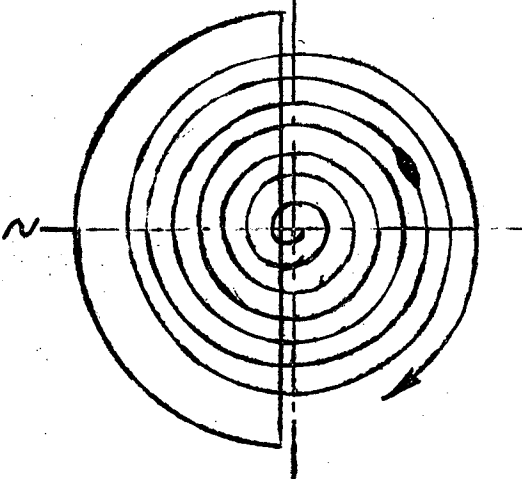
Bunches at  
all radii

Betatron



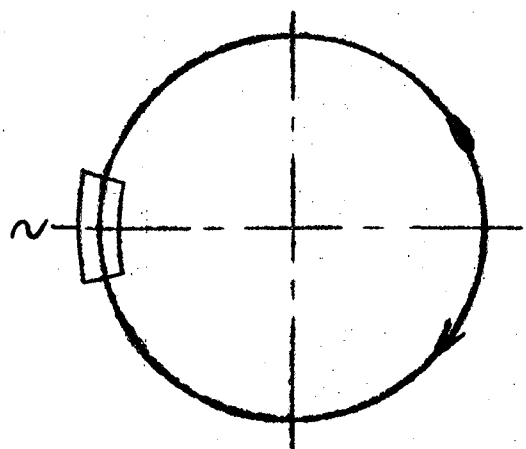
Uniform around  
Circumference

Synchro-cyclotron



One Bunch Spiralling  
out

Synchrotron



One Bunch



Below is the first of several problems which will be given for outside study. Anyone who wishes to have his solutions to the problems corrected, may turn them into the Engineering Dept. Office where they will be corrected and returned.

Problem 1.

Prepare a table listing all the types of accelerators discussed and comparing them according to the following characteristics:

Path shape--straight, circle or spiral  
Accelerating force--electric or magnetic  
Guiding force--electric or magnetic  
Accelerating field, DC, RF or AC (low frequency)  
Quantities varying during acceleration,  
    Radius, Guide field, Frequency  
Approximate energy range  
Particles accelerated  
Velocity range as non-relativistic--constant mass  
                  relativistic--changing mass and velocity, or  
                  relativistic--constant velocity.

LEGAL NOTICE

This report was prepared as an account of Government sponsored work. Neither the United States, nor the Commission, nor any person acting on behalf of the Commission:

A. Makes any warranty or representation, expressed or implied, with respect to the accuracy, completeness, or usefulness of the information contained in this report, or that the use of any information, apparatus, method, or process disclosed in this report may not infringe privately owned rights; or

B. Assumes any liabilities with respect to the use of, or for damages resulting from the use of any information, apparatus, method or process disclosed in this report.

As used in the above, "person acting on behalf of the Commission" includes any employee or contractor of the commission, or employee of such contractor, to the extent that such employee or contractor of the Commission, or employee of such contractor prepares, disseminates, or provides access to, any information pursuant to his employment or contract with the Commission, or his employment with such contractor.