

UCSF

UC San Francisco Previously Published Works

Title

Survival of Recipients of Livers From Donation After Circulatory Death Who Are Relisted and Undergo Retransplant for Graft Failure

Permalink

<https://escholarship.org/uc/item/18d1w8zd>

Journal

American Journal of Transplantation, 14(5)

ISSN

1600-6135

Authors

Allen, AM
Kim, WR
Xiong, H
[et al.](#)

Publication Date

2014-05-01

DOI

10.1111/ajt.12700

Peer reviewed



Published in final edited form as:

Am J Transplant. 2014 May ; 14(5): 1120–1128. doi:10.1111/ajt.12700.

Survival of Recipients of Livers from Donation after Circulatory Death

AM Allen, MD¹, WR Kim, MD^{1,2}, H Xiong, MS², J Liu, PhD², PG Stock, MD, PhD^{2,3}, JR Lake, MD⁴, S Chinnakotla, MD⁵, JJ Snyder, PhD^{2,6}, AK Israni, MD, MS^{2,6,7}, and BL Kasiske, MD^{2,7}

¹Department of Gastroenterology and Hepatology, Mayo Clinic, Rochester, Minnesota

²Scientific Registry of Transplant Recipients, Minneapolis Medical Research Foundation, Minneapolis, Minnesota

³Department of Surgery, University of California, San Francisco, California

⁴Department of Medicine, Division of Gastroenterology, Hepatology, and Nutrition, University of Minnesota, Minneapolis, Minnesota

⁵Department of Surgery, University of Minnesota, Minneapolis, Minnesota

⁶Department of Epidemiology and Community Health, University of Minnesota, Minneapolis, Minnesota

⁷Department of Medicine, Hennepin County Medical Center, University of Minnesota, Minneapolis, Minnesota

Abstract

Use of donation after circulatory death (DCD) as a strategy to increase the pool of transplantable livers has been limited due to poorer recipient outcomes compared with donation after brain death (DBD). We examined outcomes of failed DCD grafts regarding wait-list mortality after relisting and patient and graft survival after retransplant. From the Scientific Registry of Transplant Recipients database, we identified 1820 adults who underwent first deceased donor liver transplant January 1, 2004–June 30, 2011, and were relisted due to graft failure; 12.7% were DCD recipients. Compared with DBD recipients, DCD recipients had better wait-list survival (90-day mortality: 8%, DCD recipients; 14%–21%, DBD recipients). Of 950 retransplant patients, 14.5% were prior DCD recipients. Graft survival after second liver transplant was similar for prior DCD (28% graft failure within 1 year) and DBD recipients (30%). Patient survival was slightly better for prior DCD (25% death within 1 year) than DBD recipients (28%). Despite higher graft failure and morbidity rates, survival of prior DCD recipients who were selected for relisting and retransplant was not worse than survival of DBD recipients.

Corresponding author: W. Ray Kim, MD, William J von Liebig Transplant Center, Mayo Clinic, 200 First Street SW, Rochester, MN 55905, kim.ray@mayo.edu.

Disclosure

The authors of this manuscript have no conflicts of interest to disclose as described by the American Journal of Transplantation.

Keywords

Graft survival; liver transplantation; outcomes; patient survival; wait-list mortality

Introduction

Although liver transplant outcomes have improved significantly over the past decades, organ shortage remains a major problem; in the recent past, more than 12,000 patients were awaiting an organ at any given time (1). In 2003, federal policies endorsed increasing the use of donation after circulatory death (DCD) as a strategy to enlarge the donor pool (2). Consequently, the proportion of DCD donors surged from 1.6% in 2002 to 5.2% in 2007 (3). However, enthusiasm was tempered around 2007 after a growing body of evidence indicated that transplant outcomes after DCD were inferior compared with outcomes of grafts obtained from donation after brain death (DBD), and the number of DCD transplants has been stagnant since (1,4).

DCD grafts are procured after a variable period of ischemia following withdrawal of life support; hence, they are prone to ischemic cholangiopathy, reported in 15%–37% of patients (5,6), and subsequent non-anastomotic biliary strictures or biliary cast syndrome (7–9). Consequently, DCD transplants are associated with higher morbidity, longer hospital stays, increased costs (10), higher graft failure rates, and higher mortality (11). Simultaneous with documentation of these limitations of DCD grafts, discard rates of DCD livers have increased in recent years. Between 2004 and 2010, the proportion of discarded livers that were DCD livers increased from 8.7% to 28.4%, a 4-fold increase in a multivariable analysis (4).

Although the extent to which this rising trend of discarded DCD livers is attributable to concerns about their inferior outcomes is unclear, DCD remains the fastest growing potential source of transplanted livers. Clearly, appropriate use of DCD livers should be encouraged to increase the number of transplantable organs. A strategy to achieve that end may involve granting exception scores to recipients of DCD livers that fail, in order to facilitate retransplant and remove disincentives to use DCD livers (6,8,12). Such a policy should be based on an objective analysis that accounts for not only rates of graft failure and patient survival after DCD transplant, but also for associated morbidity leading to suffering and poor quality of life. As the current guiding principle for liver allocation is risk of mortality, the extent to which patient morbidity and poor quality of life should be considered in transplant allocation remains to be determined. An important barrier to this consideration is lack of data that allow appropriate translation between quantity and quality of life in DCD recipients whose grafts are failing. While morbidity data continue to accumulate for specific patient groups, registry data remain useful for analysis of mortality data in patients with failed grafts, an integral part in this consideration.

We studied patients who, after receiving a primary DCD graft, experienced graft failure and were selected to be relisted for repeat transplant, compared with patients who were relisted after failure of DBD grafts. The aims of the study were to compare (i) wait-list mortality after relisting and (ii) graft and patient survival after retransplant. An important caveat of

this analysis is that, by definition, it did not include patients with failing grafts who were not re-registered on the waiting list for reasons such as too low a model for end-stage liver disease (MELD) score or being too sick to be considered for transplant.

Materials and Methods

This study used data from the Scientific Registry of Transplant Recipients (SRTR). The SRTR data system includes data on all donors, wait-listed candidates, and transplant recipients in the US, submitted by the members of the Organ Procurement and Transplantation Network (OPTN), and has been described elsewhere (13). The Health Resources and Services Administration (HRSA), US Department of Health and Human Services, provides oversight to the activities of the OPTN and SRTR contractors.

Study Population

The study population included all adults included in the SRTR database who underwent first deceased donor liver transplant between January 1, 2004, and June 30, 2011, and were relisted for graft failure. Recipients of multi-organ transplants were excluded from the analysis.

In analyzing wait-list survival after relisting, we identified DCD and DBD recipients who were registered on the OPTN waiting list after initial graft survival of at least 14 days. This time frame was chosen to eliminate early graft failure from catastrophic events such as primary nonfunction. DBD and DCD graft failure rates are parallel during the first 20 days post-transplant and diverge thereafter; failure rates for DCD grafts continue to increase up to 180 days posttransplant (6). Thus, excluding graft failures in the first 14 days allowed our analysis to reflect the difference in graft failure patterns between the two graft types. Sensitivity analysis including all patients relisted at any time was subsequently performed to evaluate whether the outcomes differed after removing this exclusion criterion. Patients were followed forward from the date of relisting until the first of retransplant, death, or study end (November 1, 2011). Deaths that occurred after removal from the waiting list were also counted as deaths. For this analysis, patients were divided into three groups: 1) DCD recipients who were relisted for any reason (DCD group), 2) DBD recipients who were relisted due to vascular thrombosis or biliary tract complications (DBD-1 group), and 3) DBD recipients who were relisted for any other reason (DBD-2 group).

The analysis of survival after retransplant included all DCD and DBD recipients who underwent second transplant more than 30 days after the primary transplant. Again, this time frame was chosen to eliminate early retransplants in an attempt to focus our analysis on longer-term graft failure from complications such as biliary strictures. Sensitivity analysis including patients who underwent retransplant any time after the initial transplant was subsequently performed. We explored whether outcomes changed over time by comparing outcomes in the first half of the study period (era 1, primary transplant January 1, 2004, through December 31, 2007) with outcomes in the second half (era 2, primary transplant January 1, 2008, through June 30, 2011).

Data Analysis

For the wait-list analysis, the outcome of primary interest was 90-day mortality after relisting, censoring retransplants that occurred within 90 days. This time frame was based on the convention of assessing the 90-day wait-list mortality by the model for end-stage liver disease (MELD) score and other indicators of mortality, and on the fact that a majority of wait-list outcomes tend to occur within 90 days. To test the robustness of the results, we conducted sensitivity analysis evaluating wait-list mortality beyond 90 days.

In the analysis of graft and patient survival after retransplant, we examined 1-year mortality. One year is a sufficiently long time interval to allow most influences of pretransplant conditions to materialize. For the graft survival analysis, patients were followed from the second transplant date to the earliest date of all-cause graft failure including death or a third transplant. Patient survival was analyzed for the period from the date of the second transplant to death.

Survival was estimated by the Kaplan-Meier method and compared by the log-rank test. Cox proportional hazard regression models adjusted for covariates were used to estimate hazard ratios (HRs) and 95% confidence intervals (CIs) for patient and graft survival for DCD and DBD recipients. The covariates considered for model adjustment consisted of variables included in risk adjustment models for 1-year adult graft survival for the liver program-specific reports. They included donor characteristics: age, height, race/ethnicity, ABO compatibility, malignancy, hepatitis C virus (HCV), metabolic disease, history of cancer, cocaine use, hypertension, Centers for Disease Control and Prevention high-risk indicator, receipt of inotropic agents, desmopressin, and diuretics; recipient characteristics: age, race/ethnicity, albumin, international normalized ratio, creatinine, receipt of dialysis, life support, split/partial graft, functional status, medical condition, portal vein thrombosis, previous abdominal surgery, previous liver transplant, previous malignancy, and insurance coverage; and transplant characteristics: donor and recipient geography, cold ischemia time, and interaction between diagnosis of HCV by donor age. Backwards variable selection with P value = 0.10 was employed to limit the model to relevant covariates.

Results

Wait-List Survival after Graft Failure in DCD versus DBD Recipients

In all, 1820 patients were included in the analysis; 231 (12.7%) were previous DCD recipients, 428 (23.5%) DBD-1 patients, and 1161 (63.8%) DBD-2 patients. Table 1 compares the characteristics of the three groups. Notably, DCD recipients overall were listed with lower biological MELD scores than their counterparts (approximately 58% of DCD recipients were relisted with MELD scores < 20, compared with 48% of DBD-1 and 35% of DBD-2 patients). DBD recipients were sicker than DCD recipients, with higher need for life support and hemodialysis and poorer functional status. Comorbid conditions such as diabetes, hepatocellular carcinoma, or increased albumin levels did not differ significantly between the three groups (data not shown).

Wait-list outcome data were available for 1722 (95%) of the 1820 included patients; the remainder of patients were administratively censored at study end. Of patients with available

wait-list outcome data, 1264 (73.4%) were removed within 90 days after relisting (896 due to transplant, 192 due to death, 176 due to other reasons); the remaining 458 patients (26.6%) remained on the waiting list for more than 90 days after relisting. Wait-list deaths occurred in 19 DCD recipients (8%), 58 DBD-1 patients (14%), and 240 DBD-2 patients (21%) (Figure 1). DCD recipients survived longer compared with either DBD group (log-rank test P value < 0.001). Regarding the two eras, wait-list survival rates were poorer in era 2 than in era 1 for DBD-1 patients (those relisted for graft failure due to vascular thrombosis or biliary complications).

Adjusted mortality hazards were significantly higher for both the DBD-1 and DBD-2 groups than for the DCD group (Table 2). Adjusted HRs were 2.32 (95% CI 1.36–3.97) for the DBD-1 group and 2.88 (95% CI 1.77–4.67) for the DBD-2 group. Other variables affecting wait-list mortality included recipient age, HCV diagnosis, renal function, functional status, and cold ischemic time. Results of the wait-list mortality analysis extended beyond 90 days did not change: HRs were 2.07 (95% CI 1.36–3.15) for the DBD-1 group and 2.44 (95% CI 1.70–3.51) for the DBD-2 group. When the study period was split into two eras, wait-list survival remained better for DCD versus DBD-1 recipients (HRs 1.77 for era 1 and 2.92 for era 2) and DBD-2 recipients (HRs 2.54 for era 1 and 3.17 for era 2).

Sensitivity analysis of all relisted patients (after removing the exclusion criterion of the first 14 days after primary transplant) included an additional 97 DCD, 222 DBD-1, and 708 DBD-2 recipients. Compared with failed DCD grafts, wait-list mortality risk for the DBD-1 group remained higher but was no longer significant (HR 1.12, 95% CI 0.76–1.67), while that of DBD-2 group remained significantly higher (HR 1.84, 95% CI 1.33–2.56).

Patient and Graft Survival after Second Liver Transplant

Of 950 patients included in the survival analysis following retransplant, 138 (14.5%) were DCD recipients and 812 (85.5%) were DBD recipients. The DCD patients had lower biological MELD scores, better functional status, fewer HCV diagnoses, and less intensive unit care, and they required less life support (Table 3). In contrast, although the differences were not statistically significant, DBD recipients seemed to receive better retransplant donor organs (less cold ischemia time; less donor history of cancer, hypertension, or desmopressin use; more local donors).

We sought to determine the degree to which MELD exception scores at retransplant influenced graft allocation for DCD and DBD recipients. The distribution of biological and match MELD scores for the two groups are listed in supplementary Table S1. Compared with DBD recipients, more DCD recipients received exception scores at retransplant, but the difference did not reach statistical significance (17% versus 24%, $P = 0.07$). However, comparing the means and distributions of additional MELD exception scores, DBD recipients received more MELD exception points than DCD recipients (mean additional points, 14.9 and 11.3, respectively).

Graft survival after second liver transplant was comparable for prior DCD recipients (28% graft failures) and prior DBD recipients (30% graft failures) (Figure 2). Patient survival after retransplant was also similar in the two groups (Figure 3). Retransplant recipient survival

was slightly better when the initial graft was from DCD (25% of initial DCD recipients died) than when it was from DBD (28% of initial DBD recipients died), with the trend more notable more recently.

After adjustment for relevant covariates, a primary DCD graft had no effect on second graft survival (HR 1.04, 95% CI 0.73–1.49, $P = 0.81$; Table 4). After adjustment for patient characteristics, prior DCD graft had no effect on patient survival after retransplant (HR 0.95, 95% CI 0.65–1.40, $P = 0.80$; Table 5).

In a sensitivity analysis including patients who underwent retransplant at any time (including the first 30 days) after initial transplant, the effect of primary DCD graft on graft and patient survival after retransplant remained non-significant (HRs 0.98 and 1, respectively).

Discussion

Previous studies (6,14,15), including a recent SRTR analysis (16), have shown that recipients of DCD livers are more likely to experience graft failure than recipients of DBD livers. After adjustment for factors that affect graft survival and other relevant variables, DCD was associated with a 40% increase in graft failure and a 15% increase in death (16). In contrast to the overall outcome after DCD transplant, this analysis, based on patients selected to be relisted and undergo retransplant, showed that patient and graft survival was not worse for primary DCD than for primary DBD recipients.

Our initial hypothesis was that outcomes are worse for DCD than for DBD recipients whose grafts fail. However, results of this analysis indicate that wait-list and post-retransplant survival of primary DCD recipients was not inferior to survival of primary DBD recipients once they were relisted or underwent retransplant. In fact, our data show that DCD patients fared better than DBD patients on the waiting list, and this difference seems to have increased in the more recent era. In the multivariable analysis, DBD recipients with vascular or biliary complications were associated with an adjusted HR of 1.8 ($P = 0.002$) in era 1 (2004–2007), which increased to 2.9 ($P = 0.004$) in era 2 (2008–2011). A similar trend was seen in the analysis of retransplant outcomes. In multivariable models (Tables 4 and 5), there was no evidence that outcomes after retransplant were inferior for prior DCD recipients compared with prior DBD recipients. Adjusting for covariates in multivariable models tended to increase the HRs associated with prior DCD, consistent with DCD recipients tending to be healthier. While the multiple covariates considered in our multivariable analysis were designed to adjust for systematic differences between the patient categories, those variables may not have identified subtle differences. However, the magnitude of the HRs in the multivariable analyses suggests that it is unlikely that unaccounted variables could negate the observed difference.

A previous analysis by Selck et al. (6) showed that failure patterns differ for DCD and DBD grafts. DCD organs tend to fail as a result of biliary and vascular complications via a protracted course of gradual decline in graft function. Patients often endure significant reduction in quality of life due to frequent biliary complications, commonly with

percutaneous indwelling biliary drainage catheters, and they often experience recurrent infections and multiple hospitalizations. These events are not identified in registry databases. Severe hepatic parenchymal malfunction occurs late; hence, MELD scores tend not to reflect the complexity of the morbidity and risk of mortality specific to biliary sepsis. Both our and Selck's analyses showed that DCD retransplant candidates appear less sick at relisting (Table 1). Similarly, at retransplant, DCD recipients had lower frequency of very high MELD scores, better functional status, and lower likelihood of requiring life support or hemodialysis compared with DBD recipients who experience graft failure (Table 3).

One potential limitation of these wait-list analyses is that the threshold at which transplant physicians/surgeons list patients for repeat transplant may differ for prior DCD and prior DBD recipients. Transplant physicians/surgeons may be more aggressive in ensuring that recipients of "marginal" organs initially are given a chance for repeat transplant over recipients of more optimal organs initially. These efforts may be reflected in the proportion of patients who received MELD exception scores, which tended to be higher for DCD than for DBD recipients (24% versus 17%). We emphasize that this analysis included patients who were selected to be relisted and to undergo retransplant; our data should not be extrapolated to all DCD recipients or to DCD recipients with graft dysfunction in general.

Within the current allocation constructs, access to retransplant for patients who receive an organ from a DCD donor may partially compensate for the decreased longevity and the morbidity associated with DCD grafts. A system that incentivizes primary liver candidates to opt for a DCD organ may offer a retransplant soon after the original graft fails and not subject the patient to a long waiting period. While the current analysis of mortality is an important element in this policy consideration, it does not preclude a system that grants exception scores for DCD recipients with graft failure, in recognition of the fact that their acceptance of a DCD organ contributed to expansion of the donor pool and that their morbidity is not taken into account in the current MELD system. We believe that further discussion and exploration of data, including standardized reproducible measures of biliary complications and resulting decreased quality of life and suffering, are needed to consider a system that provides appropriate incentives to increase use of DCD organs while not disadvantaging either DCD or DBD recipients.

In summary, in this analysis of liver transplant recipients who were selected to be relisted and undergo retransplant, wait-list mortality for DCD recipients was not higher than for DBD recipients relisted due to vascular thrombosis, biliary tract complications, or other reasons. On the contrary, there is some evidence that wait-list survival for relisted DCD recipients is higher than for relisted DBD recipients. Of patients who received a second graft, prior DCD recipients fared at least as well as prior DBD recipients regarding both graft and patient survival. These results, along with data unavailable in registration data sets, are helpful in policy considerations to promote optimal use of all available organs, including DCD organs.

Supplementary Material

Refer to Web version on PubMed Central for supplementary material.

Acknowledgments

This work was conducted under the auspices of the Minneapolis Medical Research Foundation, contractor for the Scientific Registry of Transplant Recipients, as a deliverable under contract no. HSH250201000018C (US Department of Health and Human Services, Health Resources and Services Administration, Healthcare Systems Bureau, Division of Transplantation). As a US Government-sponsored work, there are no restrictions on its use. The views expressed herein are those of the authors and not necessarily those of the US Government. The authors thank Scientific Registry of Transplant Recipients colleagues Delaney Berrini, BS, for manuscript preparation, and Nan Booth, MSW, MPH, ELS, for manuscript editing.

Abbreviations

CI	confidence interval
DBD	donation after brain death
DCD	donation after circulatory death
HR	hazard ratio
MELD	model for end-stage liver disease
OPTN	Organ Procurement and Transplantation Network
SRTR	Scientific Registry of Transplant Recipients

Reference List

1. Organ Procurement and Transplantation Network Data. [Accessed July 9, 2013] Available from: <http://optn.transplant.hrsa.gov/data>
2. Shafer TJ, Wagner D, Chessare J, Schall MW, McBride V, Zampello FA, et al. US organ donation breakthrough collaborative increases organ donation. *Crit Care Nurs Q.* 2008; 31:190–210. [PubMed: 18574367]
3. Berg CL, Steffick DE, Edwards EB, Heimbach JK, Magee JC, Washburn WK, et al. Liver and intestine transplantation in the United States 1998–2007. *Am J Transplant.* 2009; 9 (4 Pt 2):907–931. [PubMed: 19341415]
4. Orman ES, Barritt AS, Wheeler SB, Hayashi PH. Declining liver utilization for transplantation in the United States and the impact of donation after cardiac death. *Liver Transpl.* 2013; 19:59–68. [PubMed: 22965893]
5. Abt P, Crawford M, Desai N, Markmann J, Olthoff K, Shaked A. Liver transplantation from controlled non-heart-beating donors: an increased incidence of biliary complications. *Transplantation.* 2003; 75:1659–1663. [PubMed: 12777852]
6. Selck FW, Grossman EB, Ratner LE, Renz JF. Utilization, outcomes, and retransplantation of liver allografts from donation after cardiac death: implications for further expansion of the deceased-donor pool. *Ann Surg.* 2008; 248:599–607. [PubMed: 18936573]
7. Bellingham JM, Santhanakrishnan C, Neidlinger N, Wai P, Kim J, Niederhaus S, et al. Donation after cardiac death: a 29-year experience. *Surgery.* 2011; 150:692–702. [PubMed: 22000181]
8. Skaro AI, Jay CL, Baker TB, Wang E, Pasricha S, Lyuksemburg V, et al. The impact of ischemic cholangiopathy in liver transplantation using donors after cardiac death: the untold story. *Surgery.* 2009; 146:543–552. [PubMed: 19789011]
9. Taner CB, Bulatao IG, Willingham DL, Perry DK, Sibulesky L, Pungpaong S, et al. Events in procurement as risk factors for ischemic cholangiopathy in liver transplantation using donation after cardiac death donors. *Liver Transpl.* 2012; 18:100–111. [PubMed: 21837741]
10. Jay CL, Skaro AI, Ladner DP, Wang E, Lyuksemburg V, Chang Y, et al. Comparative effectiveness of donation after cardiac death versus donation after brain death liver transplantation: Recognizing who can benefit. *Liver Transpl.* 2012; 18:630–640. [PubMed: 22645057]

11. Jay C, Ladner D, Wang E, Lyuksemburg V, Kang R, Chang Y, et al. A comprehensive risk assessment of mortality following donation after cardiac death liver transplant - an analysis of the national registry. *J Hepatol.* 2011; 55:808–813. [PubMed: 21338639]
12. de Vera ME, Lopez-Solis R, Dvorchik I, Campos S, Morris W, Demetris AJ, et al. Liver transplantation using donation after cardiac death donors: long-term follow-up from a single center. *Am J Transplant.* 2009; 9:773–781. [PubMed: 19344466]
13. Leppke S, Leighton T, Zaun D, Chen SC, Skeans M, Israni AK, et al. Scientific Registry of Transplant Recipients: collecting, analyzing, and reporting data on transplantation in the United States. *Transplant Rev.* 2013; 27:50–56.
14. Abt PL, Desai NM, Crawford MD, Forman LM, Markmann JW, Olthoff KM, et al. Survival following liver transplantation from non-heart-beating donors. *Ann Surg.* 2004; 239:87–92. [PubMed: 14685105]
15. Merion RM, Pelletier SJ, Goodrich N, Englesbe MJ, Delmonico FL. Donation after cardiac death as a strategy to increase deceased donor liver availability. *Ann Surg.* 2006; 244:555–562. [PubMed: 16998364]
16. Kim WR, Stock P, Xiong H, et al. Geographic heterogeneity in use and outcome of DCD livers. *Am J Transplant.* 2013; 13 (S5):514.

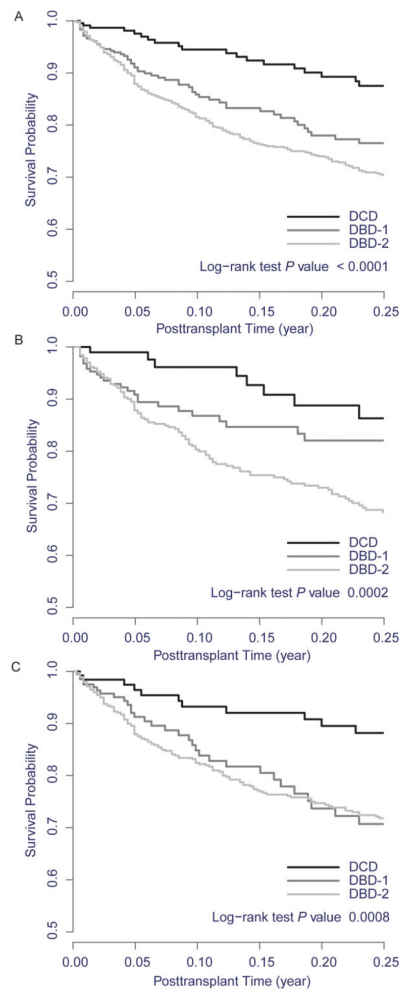


Figure 1.

Wait-list patient survival curves for the three groups for (panel A) the entire study period, 2004–2011 (panel B), era 1, 2004–2007, and (panel C) era 2, 2008–2011. The log-rank test result showed that survival was better for DCD liver recipients than for the other two groups. DBD-1, donation after brain death recipient relisted due to vascular thrombosis or biliary tract complications; DBD-2, donation after brain death recipient relisted due to any other causes; DCD, relisted donation after circulatory death recipient.

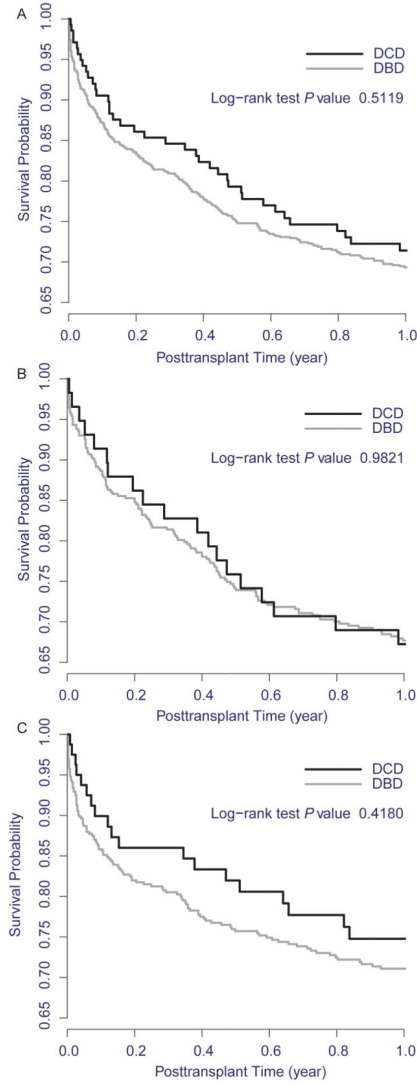


Figure 2.

Graft survival after second liver transplant for (panel A) the entire study period, 2004–2011 (panel B), era 1, 2004–2007, and (panel C) era 2, 2008–2011. Graft survival appeared to be better for the prior DCD group, overall and for the recent era, but the differences were not statistically significant. No difference was seen for the early era. DBD, donation after brain death; DCD, donation after circulatory death.

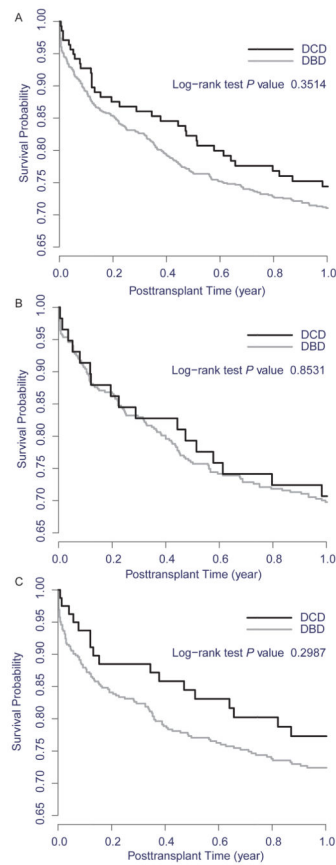


Figure 3. Patient survival after second liver transplant for (panel A) the entire study period, 2004–2011 (panel B), era 1, 2004–2007, and (panel C) era 2, 2008–2011. Patient survival appeared to be better for the prior DCD group, overall and for the recent era, but the differences were not statistically significant. No difference was seen for the early era. DBD, donation after brain death; DCD, donation after circulatory death.

Table 1

Characteristics of the Study Population at Relisting

Characteristics	Study Group			P
	DCD	DBD-1	DBD-2	
<i>n</i>	231	428	1161	
Age (years)	52.5 (10.1)	51.4 (10.5)	50.5 (10.6)	0.01
Height (cm)- mean (SD)	172.9 (11.2)	173 (10.1)	173 (10.6)	0.91
Race/ethnicity				0.18
White	163 (70.6)	318 (74.3)	791 (68.1)	
Black or African American	6 (2.6)	12 (2.8)	32 (2.8)	
Hispanic/Latino	24 (10.4)	39 (9.1)	167 (14.4)	
Asian/Native Hawaiian or other Pacific Islander	36 (15.6)	53 (12.4)	154 (13.3)	
Multi-racial/American Indian or Alaska Native	2 (0.9)	6 (1.4)	17 (1.5)	
Time from original transplant to relisting (months)*	9.7 (13.0)	8.2 (11.3)	16.1 (17.8)	< 0.01
Medical urgency status at listing				< 0.01 [†]
Status 1/1A	6 (2.6)	19 (4.4)	44 (3.8)	
MELD 6–10 [‡]	15 (6.5)	39 (9.1)	75 (6.5)	
MELD 11–14 [‡]	34 (14.7)	60 (14.0)	92 (7.9)	
MELD 15–20 [‡]	81 (35.1)	97 (22.7)	226 (19.5)	
MELD 21–30 [‡]	64 (27.7)	134 (31.3)	395 (34.0)	
MELD 31–40 [‡]	31 (13.4)	79 (18.5)	329 (28.3)	
Serum creatinine	1.2 (0.7)	1.4 (1)	1.4 (1)	0.37
Hepatitis C virus	108 (46.8)	175 (40.9)	670 (57.7)	< 0.01
Hepatocellular carcinoma	75 (32.5)	109 (25.5)	305 (26.3)	0.12
Dialysis 2 times/week in prior week	5 (2.2)	19 (4.4)	67 (5.8)	0.06
On life support	7 (3.0)	23 (5.4)	83 (7.2)	0.04
Functional status				0.01
No assistance	125 (54.1)	209 (48.8)	585 (50.4)	
Some assistance	59 (25.5)	96 (22.4)	230 (19.8)	
Total assistance	36 (15.6)	98 (22.9)	238 (20.5)	
Missing	11 (4.8)	25 (5.8)	108 (9.3)	
Portal vein thrombosis prior to primary transplant	11 (4.8)	42 (9.8)	55 (4.7)	< 0.01
Previous abdominal surgery	82 (35.5)	159 (37.2)	386 (33.3)	0.33
Donor age (years)	39.5 (14.5)	48.2 (17.1)	48.2 (17.7)	< 0.01
Donor race/ethnicity				< 0.01
White	195 (84.4)	259 (60.5)	741 (63.8)	
Black or African American	18 (7.8)	101 (23.6)	202 (17.4)	
Hispanic/Latino	16 (6.9)	53 (12.4)	179 (15.4)	
Asian/Native Hawaiian or other Pacific Islander	2 (0.9)	11 (2.6)	33 (2.8)	
Multi-racial/American Indian or Alaska Native	0 (0)	4 (0.9)	6 (0.5)	
Donor and candidate geography				0.14

Characteristics	Study Group			P
	DCD	DBD-1	DBD-2	
In same OPO	137 (59.3)	285 (66.6)	783 (67.4)	
In same region but not same OPO	67 (29.0)	109 (25.5)	270 (23.3)	
Not in same region or OPO	27 (11.7)	34 (7.9)	108 (9.3)	
Partial or split liver	0	5 (1.1)	12 (1)	0.28
Cold ischemia time, hours				0.03
Less than 9	151 (65.4)	274 (64.0)	787 (67.8)	
9 to 11	39 (16.9)	83 (19.4)	227 (19.6)	
12 or more	20 (8.7)	48 (11.2)	75 (6.5)	
Missing	21 (9.1)	23 (5.4)	72 (6.2)	

Note: Unless otherwise indicated, values are mean (standard deviation) or *n* (percent).

DBD-1, donation after brain death recipient relisted due to vascular thrombosis or biliary tract complications; DBD-2, donation after brain death recipient relisted due to any other causes; DCD, relisted donation after circulatory death recipient; MELD, model for end-stage renal disease; OPO, organ procurement organization.

* Time to relisting for all patients (including those listed within 14 days) was: DCD, 74 days; DBD-1, 31 days, and DBD-2, 63 days.

† The chi-square test excluded status 1/1A patients.

‡ Calculated MELD score without additional adjustment or exception points.

Table 2

Cox Models Adjusted for Patient Mortality after Relisting*

Variables	HR (95% CI)	P
DBD-1 (ref: DCD)	2.32 (1.36–3.97)	< 0.01
DBD-2 (ref: DCD)	2.88 (1.77–4.67)	< 0.01
Cold ischemia time		
9–11 hours	0.72 (0.53–0.99)	0.04
12 hours	0.83 (0.53–1.30)	0.42
Diagnosis of HCV	1.40 (1.10–1.78)	< 0.01
Functional status		
Some assistance	1.36 (1.01–1.84)	0.04
Total assistance	1.52 (1.12–2.07)	< 0.01
Portal vein thrombosis	1.44 (0.94–2.20)	0.10
Previous abdominal surgery	1.27 (1.00–1.61)	0.048
Candidate age at first transplant (year)	1.02 (1.01–1.03)	< 0.01
Candidate height (cm)	0.99 (0.98–1.00)	0.07
Candidate race (ref: white)		
Black or African American	0.80 (0.37–1.74)	0.57
Hispanic/Latino	1.74 (1.27–2.39)	< 0.01
Asian	0.98 (0.70–1.37)	0.89
Candidate serum creatinine (Ln)	1.26 (1.02–1.57)	0.03
Candidate dialysis (2x/week) in prior week	1.68 (1.09–2.59)	0.02

* All patient characteristics included in risk-adjustment models for 1-year adult graft survival for the liver program-specific reports were considered for model adjustment.

CI, confidence interval; DBD-1, donation after brain death recipient relisted due to vascular thrombosis or biliary tract complications; DBD-2, donation after brain death recipient relisted due to any other causes; DCD, relisted donation after circulatory death recipient; HCV, hepatitis C virus; HR, hazard ratio.

Table 3

Patient and Donor Characteristics at Retransplant

Characteristics	Recipients		P
	DCD	DBD	
<i>n</i>	138	812	
Recipient age (yr.)	52.3 (10.1)	51.6 (10.1)	0.38
Recipient height (cm)- mean (SD)	172.9(11.2)	173.4(11.1)	0.91
Recipient race/ethnicity			0.15
White	100 (72.46)	593 (73.0)	
Black or African American	2 (1.45)	23 (2.8)	
Hispanic/Latino	12 (8.70)	96 (11.8)	
Asian/Native Hawaiian or Other Pacific Islander	24 (17.39)	92 (11.3)	
Multi-racial, American Indian or Alaska Native	0 (0)	8 (1.0)	
Time between first and second liver transplant (mo.)	13.6 (15.2)	15.6 (16.7)	0.17
Medical urgency status at second liver transplant			< 0.01*
Status 1/1A	1 (0.7)	31 (3.8)	
MELD 6–10 [†]	9 (6.5)	49 (6.0)	
MELD 11–14 [†]	11 (8.0)	47 (5.8)	
MELD 15–20 [†]	35 (25.4)	113 (14.0)	
MELD 21–30 [†]	58 (42.0)	305 (37.6)	
MELD 31–40 [†]	24 (17.4)	267 (32.8)	
Recipient serum creatinine - mean (SD)	1.5 (1)	1.7 (1.1)	< 0.01
Recipient INR - mean (SD)	1.5 (0.6)	1.7 (0.8)	< 0.01
Recipient albumin - mean (SD)	2.9 (0.7)	2.8 (0.7)	0.08
Recipient diagnosis of hepatitis C	35 (25.4)	306 (37.7)	< 0.01
Recipient metabolic liver disease	10 (7.3)	23 (2.8)	0.02
Recipient dialysis 2 times/week in prior week	6 (4.4)	83 (10.2)	0.04
Recipient in intensive care unit	12 (8.7)	175 (21.6)	< 0.01
Recipient on life support	3 (2.2)	92 (11.3)	< 0.01
Recipient functional status			0.02
No assistance	44 (31.9)	208 (25.6)	
Some assistance	42 (30.4)	183 (22.5)	
Total assistance	48 (34.8)	378 (46.6)	
Missing	4 (2.9)	43 (5.3)	
Recipient previous portal vein thrombosis	5(3.6)	70 (8.6)	0.07
Donor age (year)	40.0 (15.3)	36.9 (15.4)	0.03
Donor risk index	1.4 (0.4)	1.4(0.3)	0.06
Donor race/ethnicity			0.68
White	92 (66.7)	508 (62.6)	
Black or African American	21 (15.2)	167 (20.6)	
Hispanic/Latino	19 (13.8)	109 (13.4)	

Characteristics	Recipients		P
	DCD	DBD	
Asian/Native Hawaiian or other Pacific Islander	5 (3.6)	24 (3.0)	
Multi-Racial, American Indian or Alaska Native	1 (0.7)	4 (0.5)	
Donor received desmopressin	34 (24.6)	156 (19.2)	< 0.01
Donor and recipient geography			0.62
In same OPO	92 (66.7)	569 (70.1)	
In same region but not same OPO	38 (27.5)	208 (25.6)	
Not in same region or OPO	8 (5.8)	35 (4.3)	
Second liver transplant with DCD	1 (0.7)	12 (1.5)	0.76
Partial or split liver	0	1 (0.1)	1.00
Cold ischemia time (hr.)			0.53
Less than 9	89 (64.5)	574 (70.7)	
9 to 11	29 (21.0)	139 (17.1)	
12 or more	10 (7.3)	47 (5.8)	
Missing	10 (7.3)	52 (6.4)	

Note: Unless otherwise indicated, values are mean (standard deviation) or *n* (percent).

DBD, donation after brain death; DCD, donation after circulatory death; MELD, model for end-stage renal disease; OPO, organ procurement organization.

* The chi-square test excluded status 1/1A patients.

† Calculated MELD score without additional adjustment or exception points.

Table 4

Factors and Effects in the Adjusted Model for Graft Loss after Second Liver Transplant*

Variable	HR (95% CI)	P
Primary transplant donor type: DCD (ref: DBD)	1.04 (0.73–1.49)	0.81
Diagnosis of HCV	1.30 (1.02–1.66)	0.03
Recipient metabolic liver disease	2.08 (1.22–3.54)	< 0.01
Donor age (year)	1.01 (1.00–1.01)	0.12
Donor received desmopressin	0.65 (0.47–0.90)	< 0.01
Regional sharing	1.29 (1.00–1.68)	0.05
National sharing	2.09(1.32–3.31)	< 0.01
Functional status		
Some assistance	1.86 (1.25–2.78)	< 0.01
Total assistance	2.01 (1.39–2.92)	< 0.01
Recipient in intensive care unit	1.83 (1.31–2.56)	< 0.01
Recipient age (year)	1.01 (1.00–1.02)	0.06
Recipient albumin (Ln)	0.68 (0.43–1.07)	0.09
Recipient life support	1.57 (1.06–2.33)	0.02

* All patient characteristics included in risk-adjustment models for 1-year adult graft survival for the liver program-specific reports were considered for model adjustment.

CI, confidence interval; DBD, donation after brain death; DCD, donation after circulatory death; HCV, hepatitis C virus; HR, hazard ratio.

Table 5

Factors and Effects in the Adjusted Model for Patient Mortality after Second Liver Transplant*

Variable	HR (95% CI)	P
Primary transplant donor type: DCD (ref: DBD)	0.95 (0.65–1.40)	0.80
Diagnosis of HCV	1.26 (0.97–1.64)	0.097
Regional sharing	1.31 (0.99–1.74)	0.05
National sharing	2.12 (1.28–3.51)	< 0.01
Recipient age (year)	1.02 (1.00–1.03)	0.01
Recipient albumin (Ln)	0.62 (0.38–1.01)	0.05
Recipient height (cm)	0.99 (0.98–1.00)	0.03
Recipient INR (Ln)	1.44 (1.02–2.03)	0.03
Recipient life support	2.36 (1.68–3.32)	< 0.01

* All patient characteristics included in risk-adjustment models for 1-year adult patient survival for the liver program-specific reports were considered for model adjustment.

DBD, donation after brain death; DCD, donation after circulatory death; CI, confidence interval; HCV, hepatitis C virus; HR, hazard ratio; INR, international normalized ratio.

Author Manuscript

Author Manuscript

Author Manuscript

Author Manuscript