

UC Irvine

UC Irvine Previously Published Works

Title

Pressure-induced ferromagnetism with strong Ising-type anisotropy in YbCu₂Si₂

Permalink

<https://escholarship.org/uc/item/19h0m498>

Journal

Physical Review B, 89(3)

ISSN

2469-9950

Authors

Tateiwa, Naoyuki
Matsuda, Tatsuma D
Haga, Yoshinori
[et al.](#)

Publication Date

2014

DOI

10.1103/physrevb.89.035127

Copyright Information

This work is made available under the terms of a Creative Commons Attribution License, available at <https://creativecommons.org/licenses/by/4.0/>

Peer reviewed

Pressure-induced ferromagnetism with strong Ising-type anisotropy in YbCu_2Si_2 *

Naoyuki Tateiwa^{1,†}, Tatsuma D. Matsuda^{1,2}, Yoshinori Haga¹, and Zachary Fisk^{1,3}

¹*Advanced Science Research Center,
Japan Atomic Energy Agency, Tokai,
Naka, Ibaraki 319-1195, Japan*

²*Department of Physics, Tokyo Metropolitan University,
Hachioji, Tokyo 192-0397, Japan*

³*University of California, Irvine, California 92697, USA*

(Dated: March 5, 2014)

We report dc magnetic measurements on YbCu_2Si_2 at pressures above 10 GPa using a miniature ceramic anvil cell. YbCu_2Si_2 shows a pressure-induced transition from the non-magnetic to a magnetic phase at 8 GPa. We find a spontaneous dc magnetization in the pressure-induced phase above 9.4 GPa. The pressure dependence of the ferromagnetic transition temperature T_C and the spontaneous magnetic moment μ_0 at 2.0 K have been determined. The value of μ_0 in the present macroscopic measurement is less than half of that determined via Mössbauer experiment. The difference may be attributed to spatial phase separation between the ferromagnetic and paramagnetic phases. This separation suggests that the pressure-induced phase boundary between the paramagnetic and ferromagnetic states is of first order. Further, we have studied the magnetic anisotropy in the pressure-induced ferromagnetic state. The effect of pressure on the magnetization with magnetic field along the magnetic easy c -axis is much larger than for field along the hard a -axis in the tetragonal structure. The pressure-induced phase has strong Ising-type uniaxial anisotropy, consistent with the two crystal electric field (CEF) models proposed for YbCu_2Si_2 .

PACS numbers: 74.62.Fj, 75.30.Kz, 71.20.Eh

I. INTRODUCTION

In recent years there has been growing interest in strongly correlated electron systems of rare earth and actinide compounds located at or close to a magnetic quantum critical point (QCP)[1]. The electronic state of such systems can often be tuned with pressure or magnetic field. Unconventional superconductivity and non-Fermi liquid behavior have been observed near pressure-induced magnetic to non-magnetic phase boundaries in many cerium compounds such as CeIn_3 [2]. The novel physical phenomena have been studied from the view point of the quantum criticality. Such phenomena might be expected in ytterbium compounds since the Yb is considered to be a “hole” equivalent of Ce. Indeed, anomalous physical properties have been reported and extensively studied in YbRh_2Si_2 and $\beta\text{-YbAlB}_4$ [3, 4].

Application of pressure tends to drive the Yb ion from nonmagnetic Yb^{2+} ($4f^{14}$) to magnetic Yb^{3+} ($4f^{13}$) states. A magnetic ordered state is stabilized at higher pressures. A pressure-induced magnetic phase has been reported in a number of Yb compounds. In most cases the pressure-induced magnetic phase has been detected via ac magnetic susceptibility measurements. There have been few studies of detailed magnetic properties of a pressure-induced phase using dc magnetization measurements. This is due to the common experimental con-

straint that the maximum pressure is only 1.5 GPa for the most commonly used piston cylinder type cell in a commercial superconducting quantum interference device (SQUID)[8].

Recently, we have developed a miniature ceramic anvil cell (mCAC) for magnetic measurements at pressures above 10 GPa with use of the SQUID magnetometer[9–11]. Thanks to the simplicity of cell structure, the mCAC can detect the ferromagnetic ordered state whose spontaneous magnetic moment is significantly less than 1.0 μ_B per a magnetic ion. The cell enables us to make a quantitative study of the pressure-induced phases in Yb compounds. We report here a study of the anisotropic magnetic properties of the pressure-induced phase in YbCu_2Si_2 .

YbCu_2Si_2 crystallizes in the tetragonal ThCr_2Si_2 -structure. This is a paramagnetic compound with a moderately high value of the linear specific heat coefficient $\gamma \simeq 135 \text{ mJK}^{-2}\text{mol}^{-1}$ [12, 13]. Previous high pressure studies suggested a pressure-induced, possibly ferromagnetic ordered state above 8 GPa from ac magnetic susceptibility measurements and Mössbauer experiment[14–17]. It is therefore important to detect the ferromagnetic component from dc magnetic measurement at high pressure. In this study we have measured the magnetization of YbCu_2Si_2 with our mCAC.

II. EXPERIMENTAL

Single crystals of YbCu_2Si_2 were grown from Sn flux[12, 13]. We have used our miniature ceramic-anvil

*Phys. Rev. B **89**, 035127 (2014).

†Electronic address: tateiwa.naoyuki@jaea.go.jp

high-pressure cell mCAC with the 0.6 mm culet anvils[9–11]. The Cu-Be gasket was preindented to 0.08 mm from the initial thickness of 0.30 mm. The diameter of the sample space in the gasket was 0.20 mm. To study the anisotropy of the magnetic properties in YbCu_2Si_2 , two single crystals were measured with magnetic field applied parallel to the magnetic easy c -axis (the [001] direction) and the hard a -axis ([100] direction) in the tetragonal crystal structure. The sizes of the single crystal samples were $0.11 \times 0.09 \times 0.03 \text{ mm}^3$ and $0.10 \times 0.09 \times 0.02 \text{ mm}^3$ for magnetic measurements with magnetic field along the c -axis and the a -axis, respectively. The sample and a Pb pressure sensor were placed in the sample space filled with glycerin as pressure-transmitting medium[18]. The pressure values at low temperatures were determined by the pressure dependence of the superconducting transition temperature of Pb[19–21]. The pressure medium glycerin solidifies at 5 GPa at room temperature. The pressure inhomogeneity was estimated as $\Delta P \sim 1 \text{ GPa}$ above 10 GPa. The demagnetization effect needs to be taken into account in the pressure-induced ferromagnetic state. The internal field values H_{int} were determined by subtracting the demagnetizing field given by $H_{int} = H_{appl} - DM$. Here, H_{appl} is the external magnetic field and D is the demagnetizing factor. Error bars in Figure 1 (b) indicate possible errors in the estimation of the magnetization.

III. RESULTS AND DISCUSSIONS

Figure 1 shows (a) temperature dependence of the magnetic susceptibility χ in a magnetic field of 1 kOe applied along the magnetic easy c -axis ($H \parallel [001]$) and (b) magnetic field dependence of the magnetization measured at 2.0 K and at 1 bar, 2.5, 3.1, 5.2, 7.2, 9.4, 10.5, and 11.5 GPa. At 1 bar, χ shows an almost temperature independent value of $\chi = 0.03 \text{ emu/mole}$ below 10 K and the magnetization increases linearly with increasing magnetic field, consistent with the previous study[12]. Application of pressure above 5 GPa induces a low temperature upturn in χ and a non-linear increase of the magnetization in low fields. At 9.4, 10.5, and 11.5 GPa, the magnetization shows typical ferromagnetic behavior with the magnetic susceptibility, diverging at low temperatures. These results indicate that the pressure-induced magnetic transition in YbCu_2Si_2 is ferromagnetic.

The spontaneous magnetic moment μ_0 is determined above 9.4 GPa from the Arrott-plot shown in Fig.1 (c). The values of μ_0 at 2.0 K are estimated as 0.16 ± 0.08 , 0.30 ± 0.08 , and $0.42 \pm 0.05 \mu_B/\text{Yb}$ at 9.4, 10.2, and 11.5 GPa, respectively. The ferromagnetic transition temperatures T_C at 9.4, 10.5, and 11.5 GPa are estimated as 3.5 ± 0.5 , 4.3 ± 0.5 , and $4.7 \pm 0.5 \text{ K}$, respectively, from the peak position in the temperature derivative of the magnetic susceptibility $\partial\chi/\partial T$.

Figure 2 shows the pressure dependences of (a) the ferromagnetic transition temperature T_C and (b) the spon-

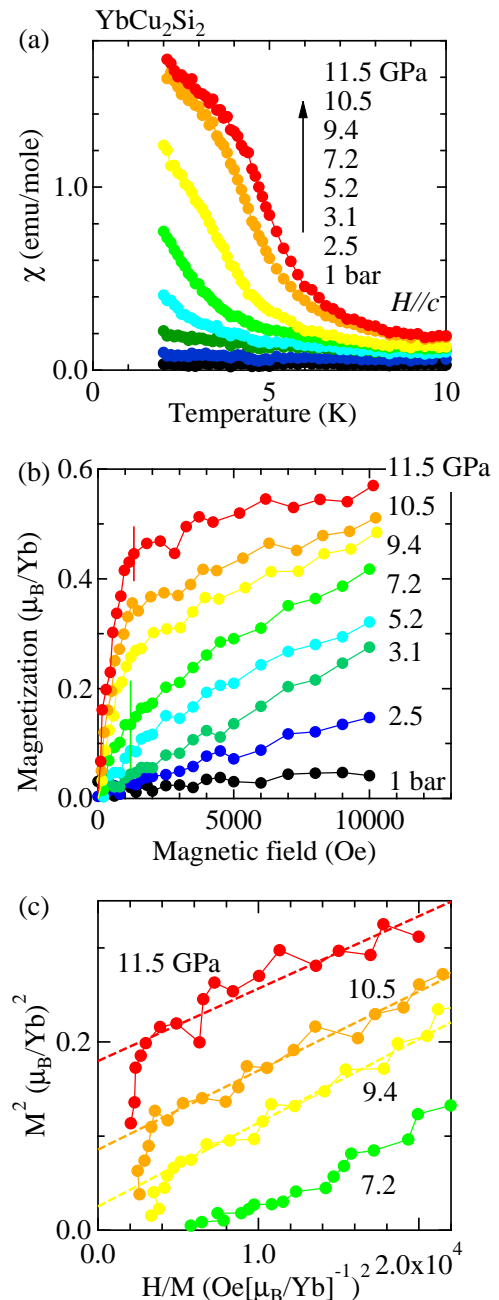


FIG. 1: (Color online)(a) Temperature dependence of the magnetic susceptibility χ under magnetic field of 1 kOe applied along the magnetic easy c -axis ($H \parallel [001]$). (b) magnetic field dependence of the magnetization and (c) Arrott-plots of the magnetization measured at 2.0 K and at 1 bar, 2.5, 3.1, 5.2, 7.2, 9.4, 10.5, and 11.5 GPa.

taneous magnetic moment μ_0 at 2.0 K in YbCu_2Si_2 . A ferromagnetic transition was not observed down to 2.0 K at 8.8 GPa (data not shown). The transition may occur below 2.0 K. The critical pressure P_c for the ferromagnetic state may be located between 8.0 and 8.5 GPa. Reference 17 reported that the pressure effect on T_C depends

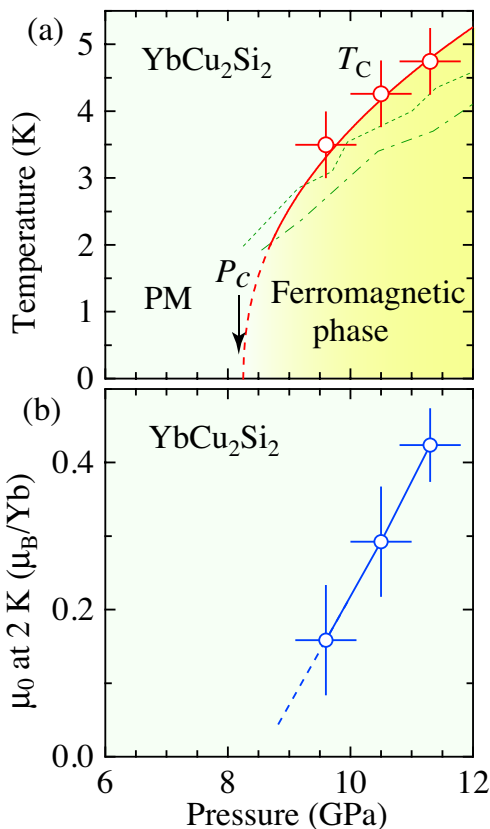


FIG. 2: (Color online)(a)Temperature-pressure phase diagram of YbCu₂Si₂. Circles indicate the ferromagnetic transition temperature T_C . Dotted and dashed-dotted lines indicate the pressure dependences of T_C for the sample with RRR = 200 in the previous study[17]. The former and the latter lines were determined by the ac magnetic susceptibility measurement and the ac calorimetry, respectively. (b) Pressure dependence of the spontaneous magnetic moment μ_0 determined at 2.0 K.

largely on the sample quality[17]. The present pressure dependence of T_C is consistent with those for samples with the similar quality (RRR = 200) in the previous study, shown as dotted and dashed-dotted lines in Fig. 2 (a). The former and the latter lines were determined by the ac magnetic susceptibility measurement and the ac calorimetry, respectively.

It has been established that, above critical pressure P_c , the transition to the ferromagnetic phase in YbCu₂Si₂ is of first order[16, 17]. Indeed, the ac magnetic susceptibility measurement showed a sudden appearance of the ferromagnetic transition above 1 K[17]. However, no sharp anomaly at T_C is observed in the temperature dependence of the magnetization at any pressure above 9.4 GPa, indicating a second order phase transition. We suggest that the ferromagnetic transition changes from the first to the second order phase transition at a somewhat higher pressure than P_c in YbCu₂Si₂. P_c may be a weakly first-order critical point. This may be a reason for absence of the Non-Fermi liquid behavior in the

resistivity ρ . It shows a typical Fermi liquid behavior $\rho = \rho_0 + AT^2$ down to 30 mK around P_c , where ρ_0 is the residual resistivity[14]. The value of A increases continuously as a function of the pressure but it does not show a divergent behavior around P_c . Several ferromagnets such as ZrZn₂[22], Co(S_{1-x}Se_x)₂[23], MnSi[24] and UGe₂[25] have a tricritical point where the paramagnet to ferromagnet transition changes from a second-order to a first order phase transition when driven toward the QCP by applying external pressure or chemical pressure. This seems to be a general property of ferromagnets as has been theoretically discussed[26].

We discuss the pressure-induced ferromagnetism in YbCu₂Si₂ from two points of views. There are two crystal electric field (CEF) models (I and I') proposed for YbCu₂Si₂ in previous studies[12]. The values of the magnetic moment expected from the doublet ground state are 2.70 and 2.29 μ_B /Yb for the CEF models I and I', respectively. We compare the values in the CEF models with that determined in the Mössbauer experiment (i) and that determined in the present macroscopic measurement (ii).

(i) The values of the magnetic moment in the CEF models are more than two times larger than that (1.25 μ_B /Yb) determined with the Mössbauer experiment at 8.9 GPa at 1.8 K[15]. The reduced magnetic moment in the Mössbauer experiment may be due to the Kondo effect. Resonant inelastic x-ray scattering measurement showed that the value of the Yb valence is 2.88 at 7 K near P_c [27]. Thus, ferromagnetism appears in the mixed valence state in YbCu₂Si₂. Contrary to cerium compounds, a magnetic ordering can appear in the intermediate valence state ($n_{4f} \ll 1$) of the Yb systems, where n_{4f} is the occupation number of the 4f level[5, 28, 29]. Differences in the magnetic properties between the Ce and Yb systems arise from differing hierarchies of the energy scales of the Kondo temperature T_K , the 4f-band width Δ_{4f} and the splitting energy between ground and first excited states in the CEF levels Δ_{CEF} [5, 28, 29]. T_K of Yb systems could be smaller or comparable to Δ_{CEF} because of the smaller Δ_{4f} in Yb systems than that in cerium systems. In YbCu₂Si₂, the electrical resistivity under high pressure suggests that T_K is less than 50 K at around P_c [14]. The value of T_K is lower than that of Δ_{CEF} in the model I and I'[12]. The linear specific heat coefficient γ is estimated as $\gamma \sim 1$ J/mol·K² at P_c from the coefficient A of the T^2 -term in the resistivity with the Kadowaki-Woods relation[14, 30]. The pressure-induced phase in YbCu₂Si₂ is a ferromagnetic heavy fermion system with the intermediate valence of the Yb ion. This is opposed to Ce-systems where the magnetic ordering or heavy fermion states are usually restricted to the trivalent configuration ($n_{4f} \sim 1.0$)[5, 28, 29].

(ii) In the present macroscopic magnetic measurement, the spontaneous magnetic moment μ_0 at 2.0 K and 9.4 GPa is less than half of that with the Mössbauer experiment[15]. This difference may be due to a spatial phase separation between the paramagnetic and ferro-

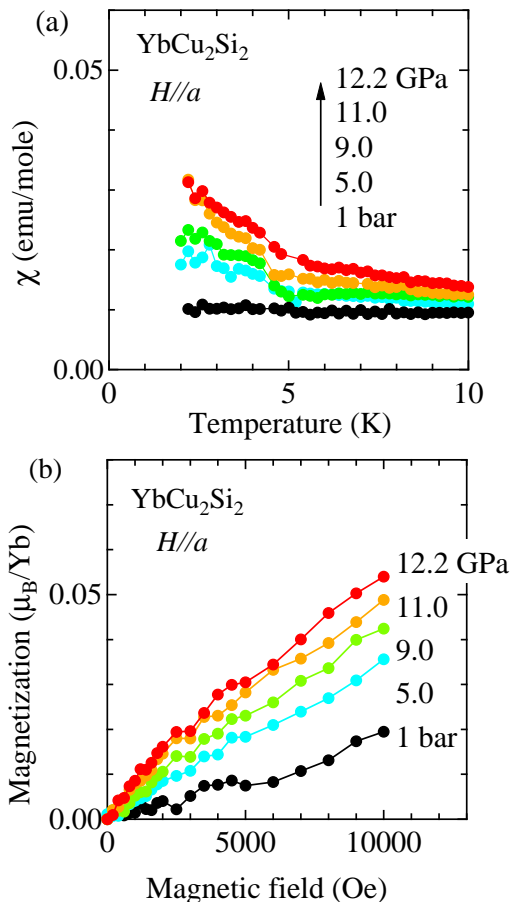


FIG. 3: (Color online)(a) Temperature dependence of the magnetic susceptibility χ under magnetic field of 1 kOe applied along the magnetic hard a -axis ($H \parallel [100]$) and (b) magnetic field dependence of the magnetization measured at 2.0 K and at 1 bar, 5.0, 9.0, 11.0, and 12.2 GPa.

magnetic states suggested in the Mössbauer spectrum. The value of μ_0 increases with increasing pressure. The continuous change in μ_0 around the critical pressure P_c is difficult to understand because the pressure induced change is of first order[16, 17]. We point out two possibilities. One is that the volume fraction of the ferromagnetic phase increases as a function of pressure and the other is that the pressure change of μ_0 reflects the increase of the Yb valence above P_c seen in the resonant inelastic x-ray scattering measurement[27]. The phase separation suggests a first order phase boundary between the paramagnetic and the ferromagnetic phases.

Figure 3 shows (a) temperature dependence of the magnetic susceptibility χ in magnetic field of 1 kOe applied along the magnetic hard a -axis ($H \parallel [100]$) and (b) magnetic field dependence of the magnetization measured at 2.0 K and at 1 bar, 5.0, 9.0, 11.0, and 12.2 GPa. Compared with the magnetization data for $H \parallel c$, the pressure effect on the magnetization for $H \parallel a$ is significantly smaller. The value of χ at 2.0 K is increased from

0.01 emu/mole at 1 bar to 0.03 emu/mole at 12.2 GPa. The magnetization curve does not show a ferromagnetic behavior at higher pressures. The magnetic field induced moment at 10 kOe is $0.038 \mu_B/\text{Yb}$ at 12.2 GPa, one order of magnitude smaller than that ($0.57 \mu_B/\text{Yb}$) with magnetic field applied along the easy c -axis at 11.5 GPa. The pressure-induced ferromagnetic phase has strong uniaxial anisotropy. The Ising character of the magnetic property is suggested from the two CEF models proposed for YbCu_2Si_2 [12].

The Ising-type magnetic fluctuation can induce the spin-triplet p -wave superconductivity around the ferromagnetic QCP[1]. A motivation for the previous high pressure studies on YbCu_2Si_2 was to search for the superconductivity around P_c . However, the superconductivity has not been found in resistivity measurements down to 30 mK[14]. Theoretically, the superconducting transition temperature for spin triplet p -wave pairing around the ferromagnetic QCP is largely lower than that of the spin singlet d -wave superconductivity around the antiferromagnetic QCP[31]. In Ce systems, CeIn_3 and CeRhIn_5 exhibit superconductivity under high pressure where T_{sc} attains maximum values of 0.2 K and 2.2 K, respectively[2, 32]. In uranium systems, the superconductivity appears in the ferromagnetic state of UGe_2 [33]. The value of T_{sc} is 0.8 K at 1.2 GPa. URhGe and UCoGe show the superconducting transition at $T_{sc} = 0.2$ and 0.7 K, respectively, at ambient pressure[34, 35]. The characteristic temperature of the electronic state in Yb systems is lower than those in Ce and U systems due to the smaller band width of $4f$ -band as mentioned before. If the superconductivity existed in YbCu_2Si_2 , the transition temperature would be very low. This may be a reason why the heavy fermion superconductivity of the $4f$ electrons is elusive in Yb systems. Also, spatial phase separation in YbCu_2Si_2 may be harmful for the appearance of the superconductivity.

The present study shows convincing evidence of ferromagnetism in the pressure-induced phase of YbCu_2Si_2 from dc magnetization measurements. Ferromagnetism has been found in a number of Yb compounds such as YbRhSb , YbInNi_4 , and YbNiSn at ambient pressure[36–38], YbInCu_4 and YbIr_2Si_2 at high pressure[39, 40]. On the other hand, there are only a few cerium based compounds such as CeRh_3B_2 and CeAg which show a ferromagnetic ground state[41, 42]. The origin of this difference is an interesting question. The hierarchies of the energy scales of T_K , Δ_{4f} and Δ_{CEF} in the Ce and Yb system are different as mentioned before[5, 28, 29]. This leads to the larger change of valence of Yb-ions from the non-magnetic $2+$ to magnetic $3+$ in real lattices, compared with that of the Ce ions. The resonant inelastic x-ray scattering experiment shows a wider valence change in YbCu_2Si_2 , compared with that in its Ce-counterpart CeCu_2Si_2 [27]. The valence transition or instability of the Yb ion has been detected by the X-ray absorption or emission spectroscopy in YbAgCu_4 [43], YbInCu_4 [44], and $\text{YbCu}_{5-x}\text{Al}_x$ [45]. Recently, new as-

pects in strongly correlated electron system originating from valence fluctuation of the rare earth ion have been theoretically discussed[6, 7]. Anomalous physical properties in β -YbAlB₄ and YbRh₂Si₂ have been re-considered from this point of view[7]. The theoretical study also shows a simultaneous divergence of the valence susceptibility and the uniform spin susceptibility at the quantum critical point of the valence transition under a magnetic field. This strengthens a ferromagnetic tendency in Yb systems under finite magnetic field. Careful future theoretical study is necessary for a realization of the ferromagnetism under zero magnetic field[46]. For the experimental point of view, comprehensive studies on the Yb systems should be done to reveal the valence state of the Yb ions in the wide temperature, magnetic field and pressure regions.

IV. CONCLUSION

In conclusion, dc magnetic measurements have been done to study the magnetic property of the pressure-induced phase in YbCu₂Si₂ with a miniature ceramic anvil high pressure cell. The ferromagnetic ordered state is confirmed from the observation of the dc spontaneous magnetization. The pressure dependences of the ferromagnetic transition temperature T_C and the spontaneous magnetic moment μ_0 at 2.0 K have been determined. The value of μ_0 in the present macroscopic measure-

ment is less than half of that determined via Mössbauer experiment, which may be attributed to spatial phase separation between the ferromagnetic and paramagnetic phases. Peculiar features in the pressure-induced ferromagnetic state are discussed in comparison with cerium compounds. The effect of pressure on the magnetization with magnetic field along the magnetic easy c -axis is much larger than for field along the hard a -axis in the tetragonal structure. The pressure-induced phase in YbCu₂Si₂ has strong Ising-type uniaxial anisotropy, consistent with the two crystal electric field (CEF) models proposed for YbCu₂Si₂.

V. ACKNOWLEDGMENTS

We would like to thank the anonymous reviewers for their valuable comments and suggestions to improve the quality of the paper. We also acknowledge Prof. S. Watanabe for critical reading of this paper and giving us useful comments. This work was supported by a Grant-in-Aid for Scientific Research on Innovative Areas “Heavy Electrons (Nos. 20102002 and 23102726), Scientific Research S (No. 20224015), A(No. 23246174), C (Nos. 21540373, 22540378 and 25400386), and Young Scientists (B) (No. 22740241) from the Ministry of Education, Culture, Sports, Science and Technology (MEXT) and Japan Society of the Promotion of Science (JSPS).

-
- [1] J. Flouquet, *Progress in Low Temperature Physics* **15**, p. 139 (Elsevier, Amsterdam, 2005).
- [2] N. D. Mathur, F. M. Grosche, S. R. Julian, I. R. Walker, D. M. Freye, R. K. W. Haselwimmer and G. G. Lonzarich: *Nature* **394**, 39 (1998).
- [3] P. Gegenwart, T. Westerkamp, C. Krellner, Y. Tokiwa, S. Paschen, C. Geibel, F. Steglich, E. Abrahams, and Q. Si, *Science* **315**, 969 (2007).
- [4] Y. Matsumoto, S. Nakatsuji, K. Kuga, Y. Karaki, N. Horie, Y. Shimura, T. Sakakibara, A. H. Nevidomsky, and P. Coleman, *Science* **331**, 316 (2011).
- [5] J. Flouquet and H. Harima: arXiv: 0910.3110; *Kotai Butsuri (Solid State Physics)* **47**, 47 (2012)[in Japanese].
- [6] S. Watanabe and K. Miyake, *Phys. Rev. Lett.* **105**, 186403 (2010).
- [7] S. Watanabe and K. Miyake, *J. Phys.: Condens. Matter* **24**, 294208 (2012).
- [8] J. Kamarád, Z. Machátová, Z. Arnold, *Rev. Sci. Instrum.* **75**, 5022 (2004).
- [9] N. Tateiwa, Y. Haga, Z. Fisk, and Y. Ōnuki, *Rev. Sci. Instrum.* **82**, 053906 (2011).
- [10] N. Tateiwa, Y. Haga, T. D. Matsuda and Z. Fisk, *Rev. Sci. Instrum.* **83**, 053906 (2012).
- [11] N. Tateiwa, Y. Haga, T. D. Matsuda, Z. Fisk, S. Ikeda, and H. Kobayashi, *Rev. Sci. Instrum.* **84**, 046105 (2013).
- [12] N. D. Dung, T. D. Matsuda, Y. Haga, S. Ikeda, E. Yamamoto, T. Ishikura, T. Endo, S. Tatsuoka, Y. Aoki, H. Sato, T. Takeuchi, R. Settai, H. Harima, and Y. Ōnuki, *J. Phys. Soc. Jpn.* **78**, 084711 (2009).
- [13] T. D. Matsuda, N. D. Dung, Y. Haga, S. Ikeda, E. Yamamoto, T. Ishikura, T. Endo, T. Takeuchi, R. Settai, and Y. Ōnuki, *Physica status solidi. B-A basic solid state physics* **247**, 757 (2010).
- [14] K. Alami-Yadri and D. Jaccard, *Eur. Phys. J. B* **6**, 5 (1998).
- [15] H. Winkelmann, M. M. Abd-Elmeguid, H. Micklitz, J. P. Sanchez, P. Vulliet, K. Alami-Yadri, and D. Jaccard, *Phys. Rev. B* **60**, 3324 (1999).
- [16] E. Colombier, D. Braithwaite, G. Lapertot, B. Salce, and G. Knebel, *Phys. Rev. B* **79**, 245113 (2009).
- [17] A. Fernandez-Pañella, D. Braithwaite, B. Salce, G. Lapertot, and J. Flouquet, *Phys. Rev. B* **84**, 134416 (2011).
- [18] N. Tateiwa and Y. Haga, *Rev. Sci. Instrum.* **80**, 123901 (2009).
- [19] T. F. Smith, C. W. Chu, and M. B. Maple, *Cryogenics* **9**, 53 (1969).
- [20] A. Eiling and J. S. Schilling, *J. Phys. F : Metal Phys.*, **11**, 623 (1981).
- [21] B. Bireckoven and J. Wittig, *J. Phys. E: Sci. Instrum.* **21**, 841 (1988).
- [22] M. Uhlarz, C. Pfleiderer, and J. Flouquet, *Phys. Rev. Lett.* **93**, 256404 (2004).
- [23] T. Goto, Y. Shindo, and H. Takahashi, *Phys. Rev. B* **56**, 14019 (1997).
- [24] C. Thessieu, C. Pfleiderer, and J. Flouquet, *Physica B*

- 237-238**, 467 (1997).
- [25] C. Pfeleiderer and A. D. Huxley, *Phys. Rev. Lett.* **89**, 147005 (2002).
- [26] D. Belitz, T. R. Kirkpatrick, and T. Vojta, *Rev. Mod. Phys.* **77**, 579 (2005).
- [27] A. Fernandez-Pañella, V. Balédent, D. Braithwaite, L. Paolasini, R. Verbeni, G. Lapertot, and J. -P. Rueff, *Phys. Rev. B* **86**, 125104 (2012).
- [28] J. Flouquet, A. Barla, R. Boursier, J. Derr, and G. Knebel, *J. Phys. Soc. Jpn.* **74**, 178 (2005).
- [29] A. Miyake, K. Kasano, T. Kagayama, K. Shimizu, R. Takahashi, Y. Wakabayashi, T. Kimura, and T. Ebihara, *J. Phys. Soc. Jpn.* **82**, 084706 (2013).
- [30] K. Kadowaki and S. B. Woods, *Solid State Commun.* **58**, 507 (1986).
- [31] Z. Wang, W. Mao, and K. Bedell, *Phys. Rev. Lett.* **87**, 257001 (2001).
- [32] H. Hegger, C. Petrovic, E. G. Moshopoulou, M. F. Hundley, J. L. Sarrao, Z. Fisk, and J. D. Thompson, *Phys. Rev. Lett.* **84**, 4986 (2000).
- [33] S. S. Saxena, P. Agarwal, K. Ahilan, F. M. Grosche, R. K. W. Haselwimmer, M. J. Steiner, E. Pugh, I. R. Walker, S. R. Julian, P. Monthoux, G. G. Lonzarich, A. Huxley, I. Sheikin, D. Braithwaite, and J. Flouquet, *Nature* **406**, 587 (2000).
- [34] D. Aoki, A. Huxley, E. Ressouche, D. Braithwaite, J. Flouquet, J.-P. Brison, E. Lhotel, and C. Paulsen, *Nature* **413**, 613 (2001).
- [35] N. T. Huy, A. Gasparini, D. E. de Nijs, Y. Huang, J. C. P. Klaasse, T. Gortenmulder, A. de Visser, A. Hamann, T. Görlach, and H. v. Löhneysen, *Phys. Rev. Lett.* **99**, 067006 (2007).
- [36] Y. Muro, Y. Haizaki, M. S. Kim, K. Umeo, H. Tou, M. Sera, and T. Takabatake, *Phys. Rev. B* **69**, 020401(R) (2004).
- [37] J. L. Sarrao, R. Modler, R. Movshovich, A. H. Lacerda, D. Hristova, A. L. Cornelius, M. F. Hundley, J. D. Thompson, C. L. Benton, C. D. Immer, M. E. Torelli, G. B. Martins, and Z. Fisk, and S. B. Oseroff, *Phys. Rev. B* **57**, 7785 (1998).
- [38] M. Kasaya, T. Tani, K. Kawate, T. Mizushima, Y. Isikawa, and K. Kiyoo, *J. Phys. Soc. Jpn.* **60**, 3145 (1991).
- [39] T. Mito, T. Koyama, M. Shimoide, S. Wada, T. Muramatsu, T. C. Kobayashi, and J. L. Sarrao, *Phys. Rev. B* **67**, 224409 (2003).
- [40] H. Q. Yuan, M. Nicklas, Z. Hossain, C. Geibel, and F. Steglich, *Phys. Rev. B* **74**, 212403 (2006).
- [41] S. K. Dhar, S. K. Malik, and R. Vijayaraghavan, *J. Phys. C: Solid State Phys.* **14**, L321 (1981).
- [42] A. L. Cornelius, A. K. Gangopadhyay, J. S. Schilling, and W. Assmus, *Phys. Rev. B* **55**, 14109 (1997).
- [43] T. Nakamura, Y. H. Matsuda, J.-L. Her, K. Kindo, S. Michimura, T. Inami, M. Mizumaki, N. Kawamura, M. Suzuki, B. Chen, H. Ohta, K. Yoshimura, and A. Kotani, *J. Phys. Soc. Jpn.* **81**, 114702 (2012).
- [44] Y. H. Matsuda, T. Inami, L. Ohwada, Y. Murata, H. Nojiri, Y. Murakami, H. Ohta, W. Zhang, and Y. Yoshimura, *J. Phys. Soc. Jpn.* **76**, 034702 (2007).
- [45] H. Yamaoka, I. Jarrige, N. Tsujii, N. Hiraoka, H. Ishii, and K.-D. Tsuei, *Phys. Rev. B* **80**, 035120 (2009).
- [46] S. Watanabe, privation communication.