

UC Irvine

UC Irvine Previously Published Works

Title

The Role of Foxg1 in the Development of Neural Stem Cells of the Olfactory Epithelium

Permalink

<https://escholarship.org/uc/item/1bp1x6dc>

Journal

Annals of the New York Academy of Sciences, 1170(1)

ISSN

0077-8923

Authors

Kawauchi, Shimako
Santos, Rosaysela
Kim, Joon
[et al.](#)

Publication Date

2009-07-01

DOI

10.1111/j.1749-6632.2009.04372.x

Copyright Information

This work is made available under the terms of a Creative Commons Attribution License, available at <https://creativecommons.org/licenses/by/4.0/>

Peer reviewed

Published in final edited form as:

Ann N Y Acad Sci. 2009 July ; 1170: 21–27. doi:10.1111/j.1749-6632.2009.04372.x.

The role of *Foxg1* in the development of neural stem cells of the olfactory epithelium

Shimako Kawauchi¹, Rosaysela Santos¹, Joon Kim^{1,2}, Piper L.W. Hollenbeck¹, Richard C. Murray³, and Anne L. Calof^{1,*}

¹Department of Anatomy & Neurobiology and the Center for Complex Biological Systems, University of California, Irvine, CA 92697-1275 USA

³ Biology Department, Hendrix College, Conway, AR 72032, USA

Abstract

The olfactory epithelium (OE) of the mouse is an excellent model system for studying principles of neural stem cell biology because of its well-defined neuronal lineage and its ability to regenerate throughout life. To approach the molecular mechanisms of stem cell regulation in the OE, we have focused on *Foxg1*, also known as brain factor-1, which is a member of the Forkhead transcription factor family. *Foxg1*^{-/-} mice show major defects in the OE at birth, suggesting that *Foxg1* plays an important role in OE development. We find that *Foxg1* is expressed in cells within the basal compartment of the OE, the location where OE stem and progenitor are known to reside. Since FoxG1 is known to regulate proliferation of neuronal progenitor cells during telencephalon development, we performed BrdU pulse-chase of *Sox2*-expressing neural stem cells during primary OE neurogenesis. We found the percentage of *Sox2*-expressing cells that retained BrdU was twice as high in *Foxg1*^{-/-} OE as in wildtypes, suggesting that these cells are delayed and/or halted in their development in the absence of *Foxg1*. Our findings suggest that the proliferation and/or subsequent differentiation of *Sox2*-expressing neural stem cells in the OE are regulated by *Foxg1*.

Keywords

Mouse; neurogenesis; olfactory epithelium; neuronal progenitor; neural stem cell; proliferation; Forkhead; transcription factor; BrdU; *Mash1*; *Ngn1*; *Sox2*; TGF- β ; FGF; olfactory receptor neuron

1. The OE neural stem cell

In the past decade, increasing attention has been paid to address the question of how cell-autonomous and non-autonomous molecular mechanisms interact to control neurogenesis 1–5. Such information is of particular importance for understanding the behavior of stem cells in the context of their use as a potential source of treatment for injured or diseased nervous system tissue.

In order to understand the basic principles that govern the generation and regeneration of neurons in the mammals, we have studied the molecular regulation of neurogenesis in a well-characterized neurogenic epithelium, the olfactory epithelium (OE) of the mouse 1–3. We use OE as a model system, both because of its capacity for continual neurogenesis 6,

*Correspondence to: Anne L. Calof Dept. of Anatomy & Neurobiology & the Center for Complex Biological Systems 364 Med Surge II University of California, Irvine Irvine, CA 92697-1275 Tel: 949-824-4616/-5745 Fax: 949-824-1104 alcalof@uci.edu.

²Present address: Department of Neurosciences, University of California, San Diego, La Jolla, CA 92093, USA

and because of several of its properties simplify the study of neurogenesis 1-3. The OE consists of one major type of neuron, the olfactory receptor neuron (ORN), as well as the stem and progenitor cells that give rise to it. Together, these cell types comprise the OE neuronal lineage, the stages of which can be clearly defined by molecular markers expressed by cells at different stages of neuronal differentiation. In addition, the OE contains an intrinsic glial cell population, the sustentacular cells, which recent evidence suggests may be derived from the same early stem cells as ORNs 1, 6-10.

Figure 1 shows a schematic cartoon of OE neurogenesis. This process begins with OE neural stem cells, which retain a self-renewing ability. These stem cells give rise to the first transit amplifying progenitors (TA progenitors), which express the *Mammalian Achte Scute Homolog 1* gene (*Mash1*; also known as *As11*), a proneural gene that encodes a basic helix-loop-helix (bHLH) transcription factor 11-16. *Mash1*-expressing progenitors in turn give rise to the second TA progenitors, immediate neuronal precursors (INPs), which express a different bHLH proneural gene, *Neurogenin1* (*Ngn1*) 15-17. INPs divide and give rise to daughter cells that undergo terminal differentiation into ORN, which express the neuronal cell adhesion molecule *Ncam* 18, 19, and subsequently mature to express the olfactory marker protein, *Omp* 18, 20.

Each stage of neurogenesis is defined both by the expression of particular marker genes and by a generally consistent histological arrangement of the cells within the OE, which becomes apparent after about day 14 of gestation in the mouse 21-23. Studies suggest that stem and TA progenitors are components of the so-called “globose” basal cell (GBC) population, and reside in the basal compartment of the OE atop the “horizontal” basal cells which are adjacent to the basal lamina 1, 5, 18, 24. Once TA progenitors commit to the ORN lineage and undergo postmitotic differentiation, the immature ORNs start migrating from the basal compartment toward a more apical position in the OE, and finally become the bipolar mature ORNs, extending dendrites to the nasal cavity and axons through the OE to the olfactory bulb (Figure 1).

The OE also provides a useful model for studying principles of stem cell maintenance and regeneration of the nervous system 1-5. The OE retains not only the ability to generate neurons throughout life (it has been estimated that ORN turnover rate is 3-12 months in rodents 25, 26), but also a distinct regenerative ability following injury. Studies have shown that, after surgical or chemical ablation the OE undergoes massive cell division and restores almost complete OE formation within two weeks 6, 11, 27. These characteristics strongly suggest that the OE maintains its neural stem cells not only during embryonic development, but also throughout adult life. Thus, unlike other regions of the nervous system, the OE provides a system in which it is possible to investigate neural stem cell behavior during regeneration in the adult nervous system, as well as during development.

Despite these advantages, the detailed molecular regulation of the expansion and differentiation of OE neural stem cells is not fully understood. To date, *Sox2* is the best molecular marker of the neuronal stem cell of the OE 3, 28. *Sox2* is an SRY transcription factor of the *SoxB1* family, and it is expressed in multipotent stem cells throughout the neural primordia 29-31. It has been shown that cells expressing *Sox2* are capable of both self-renewal and differentiation along different developmental pathways, suggesting that *Sox2* expression identifies a stem cell pool 32. *Sox2* is expressed in the OE as well, and importantly it is detected in the basal layer where stem cells are known to be resided 1, 3.

2. Role of *Foxg1* in OE stem cell development

To investigate the molecular regulation of stem cells in the OE, we have focused on *Foxg1* (also known brain factor-1), a member of the Forkhead or Fox proteins which comprise a

large family of “winged-helix” transcription factors that regulate diverse developmental processes in mammals 33. *Foxg1* has been shown to be important in regulating the development of numerous anterior neural structures, including the cerebral cortex, ventral telencephalon, retina, and OE 34-39.

In the OE, *Foxg1* expression is detected early during development when the olfactory placode is forming 39-40. In *Foxg1* null embryos, OE formation is initiated; however the OE is greatly reduced in size or absent by birth 39-41. Such findings suggest that *Foxg1* is expressed by early progenitors and/or stem cells of the ORN lineage, and that it plays a role in controlling their expansion. To test this hypothesis, we performed in situ hybridization (ISH) using a *Foxg1* cRNA probe at day 14.5 of gestation (E14.5) in wildtype mice OE (Figure 2). *Foxg1* expression in the OE is restricted to the basal layer, where early progenitors such as *Ngn1*-expressing INPs reside 2-15-16-42.

Several lines of study have demonstrated a decrease in proliferation of neuronal progenitor cells in *Foxg1*^{-/-} mice, and this is thought to contribute to the severe hypoplasia observed in the *Foxg1*^{-/-} telencephalon 37-43. Thus, we hypothesized that the early failure of OE development in *Foxg1*^{-/-} embryos is due to a reduction of stem cell proliferation and/or successive stages of differentiation, resulting in the loss of OE neuronal cells by birth.

To test this hypothesis, pulse-chase BrdU incorporation experiments were performed. We reasoned that if rapidly-dividing neural stem cells were blocked from dividing or differentiating in the OE of *Foxg1*^{-/-} mice, an increase in the number of BrdU-retaining cells would be observed in *Foxg1*^{-/-} OE, but not in the OE of wildtype littermates. BrdU was injected into pregnant dams at E10, when the olfactory pit has formed and cells at all stages of the lineage can be observed in the invaginating neuroepithelium (primary OE neurogenesis) 28. Embryos were collected 52 hours later, and processed for *Sox2* ISH and anti-BrdU immunofluorescence 44. We chose this paradigm because (1) OE neurogenesis initiates at E9-10 17-28; (2) OE neuronal progenitor cell-cycle length is estimated to be less than or equal to 17 hrs (with approximately 8 hours of S phase) in embryonic OE 19; and (3) the OE of *Foxg1*^{-/-} is already noticeably hypoplastic and much thinner than normal by E12.5 39-42. We quantified how many cells were double positive for *Sox2* ISH and BrdU immunofluorescence in the OE, as shown in Figure 3. When these cells were counted, it was found that the percentage of *Sox2*-expressing cells that retained BrdU in the pulse-chase paradigm was twice as high in *Foxg1*^{-/-} OE as in wildtype OE (Figure 3C). These results indicate that proliferation and/or differentiation of *Sox2*-expressing neural stem cells is reduced in the absence of *Foxg1*. The fact that subsequent neuronal cell stages fail to develop in *Foxg1*^{-/-} 42, further adds to the idea that absence of *Foxg1* results in an early block in OE neurogenesis.

3. Conclusions and future directions

Our laboratory's research focuses on understanding how interacting developmental signaling pathways govern OE neurogenesis. We have shown that multiple factors, including fibroblast growth factors (FGF) and TGF- β superfamily members are involved in regulating OE neurogenesis 16-19-28-45-46. FGFs are important proneurogenic factors for many cells of neuroectodermal origin. Among the FGFs, we have shown *Fgf8* to be expressed and involved in the maintenance of the OE neural stem cell population 28. *Fgf8* appears to exert its major neurogenic effect early in development, during the initial invagination of the olfactory pit and the establishment of the neuronal lineage during primary OE neurogenesis. In contrast, our studies indicate that TGF- β s are negative regulators of neurogenesis in the OE and other sensory epithelia, and that TGF- β s mediate feedback inhibition of stem and progenitor cell proliferation and/or fate choice in these tissues 16-44-47. One member of

the TGF- β superfamily, GDF11, is made by ORNs and INPs within the OE proper. GDF11 has the ability to inhibit OE neurogenesis by reversibly arresting the cell divisions of INPs, an effect that is accompanied by increased expression of the cyclin-dependent kinase inhibitor (CKI), p27Kip1. Moreover, *Gdf11* null mice show an increase in OE neurogenesis in vivo, with increased numbers of proliferating progenitors (INPs), as well as increased OE thickness and increased numbers of ORNs 16, 44.

Interestingly, FoxG1 has been shown to be involved in modulating both FGF and TGF- β signaling pathways. FoxG1 can be phosphorylated by FGF signaling, which promotes the nuclear exportation of FoxG1 and consequently promotes neuronal differentiation 48. FoxG1 has also been shown to interact with Smad-containing transcriptional complexes, which mediate canonical TGF- β signaling, and this can regulate the expression of downstream target genes such as the CKI, *p21Cip1* 49-51. From these studies, we hypothesize that stem and progenitor cell-specific intrinsic factors control and modulate extrinsic signals, to direct these cells in their choice of fates within their developmental niche. Currently, we are investigating the possibility that FoxG1 modulates these signaling pathways in OE development.

Materials and Methods

Animals

Foxg1^{cre/cre} mice, in which the *Foxg1* coding sequence is replaced by *Cre* 36, were obtained by intercrossing *Foxg1^{+/cre}* mice maintained on a Swiss Webster (Harlan) background. Because *Foxg1^{cre/cre}* mice have been used previously for studying *Foxg1*-null phenotypes, and show a phenotype identical to another *Foxg1* null allele, *Foxg1^{lacz/lacz}* 37, 52, *Foxg1^{cre/cre}* mice are designated *Foxg1^{-/-}* in the text of this paper. Midday of the day of vaginal plug detection was designated embryonic day 0.5 (E0.5). All protocols for animal use were approved by the Institutional Animal Care and Use Committee of the University of California, Irvine.

In Situ Hybridization (ISH)

Dissected tissues were fixed in 4 % paraformaldehyde (PFA)/phosphate buffered saline (PBS), cryoprotected in 30 % sucrose/PBS, and embedded as described 15. Embedded tissue was sectioned on a cryostat at 12-20 μ m, depending on the particular analysis. ISH using digoxigenin-labeled cRNA probes was performed according to published protocols 2. Probes used in this study were generated from: 2.0 kb of mouse *Ngn1* genomic DNA fragment containing ORF 53, 0.75 kb mouse *Sox2* partial cDNA (1281-2029 bp of Genbank X94127) 3; 1.3 kb mouse *Foxg1* cDNA (1391-2688 bp of Genbank NM_008241, gifted from Dr. E. Lai).

Detection of BrdU incorporation

For 52 hr BrdU pulse-chase experiment, pregnant mice were given two injections of BrdU (BrdU, Sigma, 50 μ g/gm body weight; 1 hour interval) at E10.0, and euthanized 52 hours later. Dissected embryo heads were fixed in 4 % PFA/PBS and cryoprotected in 30 % Sucrose/PBS. Embedded heads were sectioned on a cryostat at 12 μ m. Cryosections were processed for anti-BrdU immunoreactivity according to published methods 15. For the double staining, *Sox2* ISH was performed prior to BrdU immunostaining. BrdU⁺ cells were labeled with monoclonal rat anti-BrdU (clone BU1/75-ICR1; 1:1000 dilution of ascites fluid, Harlan), and detected with Texas Red-conjugated goat anti-rat IgG (1:100, Jackson ImmunoResearch). For intensity quantification, the pixel fluorescent intensity sum of individual cells was measured using Axio Vision software (Zeiss). The cells exhibiting more than 50% of the highest intensity of the field were scored.

Acknowledgments

We thank the Calof Lab members for the critical comments on the manuscript and Miss Michelle Hoang for technical support. We thank Drs. Jean Hebert and Susan McConnell for providing *Foxg1^{Cre}* mice. We thank Dr. Eseng Lai for the *Foxg1* probe. This work was funded by NIH grants DC03583 and P50 GM0-76516 to A.L.C. R.S. was supported by UCI Graduate Minority Biomedical Research Support Program, NIH grant GM55245.

Reference

1. Beites CL, et al. Identification and molecular regulation of neural stem cells in the olfactory epithelium. *Exp Cell Res.* 2005; 306:309–16. [PubMed: 15925585]
2. Calof AL, et al. Progenitor cells of the olfactory receptor neuron lineage. *Microsc Res Tech.* 2002; 58:176–88. [PubMed: 12203696]
3. Kawauchi S, et al. Molecular signals regulating proliferation of stem and progenitor cells in mouse olfactory epithelium. *Dev Neurosci.* 2004; 26:166–80. [PubMed: 15711058]
4. Murdoch B, Roskams AJ. Olfactory epithelium progenitors: insights from transgenic mice and in vitro biology. *J Mol Histol.* 2007; 38:581–99. [PubMed: 17851769]
5. Schwob JE. Neural regeneration and the peripheral olfactory system. *Anat Rec.* 2002; 269:33–49. [PubMed: 11891623]
6. Murray RC, Calof AL. Neuronal regeneration: lessons from the olfactory system. *Semin Cell Dev Biol.* 1999; 10:421–31. [PubMed: 10497099]
7. Chen X, Fang H, Schwob JE. Multipotency of purified, transplanted globose basal cells in olfactory epithelium. *J Comp Neurol.* 2004; 469:457–74. [PubMed: 14755529]
8. Huard JM, et al. Adult olfactory epithelium contains multipotent progenitors that give rise to neurons and non-neural cells. *J Comp Neurol.* 1998; 400:469–86. [PubMed: 9786409]
9. Iwai N, et al. Horizontal basal cells are multipotent progenitors in normal and injured adult olfactory epithelium. *Stem Cells.* 2008; 26:1298–306. [PubMed: 18308944]
10. Leung CT, Coulombe PA, Reed RR. Contribution of olfactory neural stem cells to tissue maintenance and regeneration. *Nat Neurosci.* 2007; 10:720–6. [PubMed: 17468753]
11. Gordon MK, et al. Dynamics of MASH1 expression in vitro and in vivo suggest a non-stem cell site of MASH1 action in the olfactory receptor neuron lineage. *Mol Cell Neurosci.* 1995; 6:363–79. [PubMed: 8846005]
12. Mumm JS, Shou J, Calof AL. Colony-forming progenitors from mouse olfactory epithelium: evidence for feedback regulation of neuron production. *Proc Natl Acad Sci U S A.* 1996; 93:11167–72. [PubMed: 8855327]
13. Calof AL, et al. The neuronal stem cell of the olfactory epithelium. *J Neurobiol.* 1998; 36:190–205. [PubMed: 9712304]
14. Guillemot F, et al. Mammalian achaete-scute homolog 1 is required for the early development of olfactory and autonomic neurons. *Cell.* 1993; 75:463–76. [PubMed: 8221886]
15. Murray RC, et al. Widespread defects in the primary olfactory pathway caused by loss of mash1 function. *J Neurosci.* 2003; 23:1769–80. [PubMed: 12629181]
16. Wu HH, et al. Autoregulation of neurogenesis by GDF11. *Neuron.* 2003; 37:197–207. [PubMed: 12546816]
17. Cau E, et al. Mash1 activates a cascade of bHLH regulators in olfactory neuron progenitors. *Development.* 1997; 124:1611–21. [PubMed: 9108377]
18. Calof AL, Chikaraishi DM. Analysis of neurogenesis in a mammalian neuroepithelium: proliferation and differentiation of an olfactory neuron precursor in vitro. *Neuron.* 1989; 3:115–27. [PubMed: 2482777]
19. DeHamer MK, et al. Genesis of olfactory receptor neurons in vitro: regulation of progenitor cell divisions by fibroblast growth factors. *Neuron.* 1994; 13:1083–97. [PubMed: 7946347]
20. Farbman AI, Margolis FL. Olfactory marker protein during ontogeny: immunohistochemical localization. *Dev Biol.* 1980; 74:205–15. [PubMed: 7350009]
21. Cuschieri A, Bannister LH. The development of the olfactory mucosa in the mouse: electron microscopy. *J Anat.* 1975; 119:471–98. [PubMed: 1141050]

22. Cuschieri A, Bannister LH. The development of the olfactory mucosa in the mouse: light microscopy. *J Anat.* 1975; 119:277–86. [PubMed: 1133096]
23. Smart IH. Location and orientation of mitotic figures in the developing mouse olfactory epithelium. *J Anat.* 1971; 109:243–51. [PubMed: 5558232]
24. Caggiano M, Kauer JS, Hunter DD. Globose basal cells are neuronal progenitors in the olfactory epithelium: a lineage analysis using a replication-incompetent retrovirus. *Neuron.* 1994; 13:339–52. [PubMed: 8060615]
25. Mackay-Sim A, Kittel PW. On the Life Span of Olfactory Receptor Neurons. *Eur J Neurosci.* 1991; 3:209–215. [PubMed: 12106197]
26. Hinds JW, Hinds PL, McNelly NA. An autoradiographic study of the mouse olfactory epithelium: evidence for long-lived receptors. *Anat Rec.* 1984; 210:375–83. [PubMed: 6542328]
27. Jang W, Youngentob SL, Schwob JE. Globose basal cells are required for reconstitution of olfactory epithelium after methyl bromide lesion. *J Comp Neurol.* 2003; 460:123–40. [PubMed: 12687701]
28. Kawauchi S, et al. Fgf8 expression defines a morphogenetic center required for olfactory neurogenesis and nasal cavity development in the mouse. *Development.* 2005; 132:5211–23. [PubMed: 16267092]
29. Wood HB, Episkopou V. Comparative expression of the mouse Sox1, Sox2 and Sox3 genes from pre- gastrulation to early somite stages. *Mech Dev.* 1999; 86:197–201. [PubMed: 10446282]
30. Uwanogho D, et al. Embryonic expression of the chicken Sox2, Sox3 and Sox11 genes suggests an interactive role in neuronal development. *Mech Dev.* 1995; 49:23–36. [PubMed: 7748786]
31. Graham V, et al. SOX2 functions to maintain neural progenitor identity. *Neuron.* 2003; 39:749–65. [PubMed: 12948443]
32. Avilion AA, et al. Multipotent cell lineages in early mouse development depend on SOX2 function. *Genes Dev.* 2003; 17:126–40. [PubMed: 12514105]
33. Carlsson P, Mahlapuu M. Forkhead transcription factors: key players in development and metabolism. *Dev Biol.* 2002; 250:1–23. [PubMed: 12297093]
34. Duggan CD, et al. Foxg1 is required for development of the vertebrate olfactory system. *J Neurosci.* 2008; 28:5229–39. [PubMed: 18480279]
35. Hanashima C, et al. Foxg1 suppresses early cortical cell fate. *Science.* 2004; 303:56–9. [PubMed: 14704420]
36. Hebert JM, McConnell SK. Targeting of cre to the Foxg1 (BF-1) locus mediates loxP recombination in the telencephalon and other developing head structures. *Dev Biol.* 2000; 222:296–306. [PubMed: 10837119]
37. Martynoga B, et al. Foxg1 is required for specification of ventral telencephalon and region-specific regulation of dorsal telencephalic precursor proliferation and apoptosis. *Dev Biol.* 2005; 283:113–27. [PubMed: 15893304]
38. Pratt T, et al. The winged helix transcription factor Foxg1 facilitates retinal ganglion cell axon crossing of the ventral midline in the mouse. *Development.* 2004; 131:3773–84. [PubMed: 15240555]
39. Xuan S, et al. Winged helix transcription factor BF-1 is essential for the development of the cerebral hemispheres. *Neuron.* 1995; 14:1141–52. [PubMed: 7605629]
40. Tao W, Lai E. Telencephalon-restricted expression of BF-1, a new member of the HNF-3/fork head gene family, in the developing rat brain. *Neuron.* 1992; 8:957–66. [PubMed: 1350202]
41. Hatini V, et al. Dynamics of placodal lineage development revealed by targeted transgene expression. *Dev Dyn.* 1999; 215:332–43. [PubMed: 10417822]
42. Kawauchi S, et al. Foxg1 promotes olfactory neurogenesis by antagonizing Gdf11. *Development.* 2009; 136:1453–1464. [PubMed: 19686101]. [PubMed: 19297409]
43. Hanashima C, et al. Brain factor-1 controls the proliferation and differentiation of neocortical progenitor cells through independent mechanisms. *J Neurosci.* 2002; 22:6526–36. [PubMed: 12151532]
44. Kim J, et al. GDF11 controls the timing of progenitor cell competence in developing retina. *Science.* 2005; 308:1927–30. [PubMed: 15976303]

45. Shou J, et al. Opposing effects of bone morphogenetic proteins on neuron production and survival in the olfactory receptor neuron lineage. *Development*. 2000; 127:5403–13. [PubMed: 11076761]
46. Shou J, Rim PC, Calof AL. BMPs inhibit neurogenesis by a mechanism involving degradation of a transcription factor [see comments]. *Nature Neuroscience*. 1999; 2:339–45.
47. Gokoffski, K., et al. 2008. submitted
48. Regad T, et al. The neural progenitor-specifying activity of FoxG1 is antagonistically regulated by CKI and FGF. *Nat Cell Biol*. 2007; 9:531–40. [PubMed: 17435750]
49. Dou C, et al. BF-1 interferes with transforming growth factor beta signaling by associating with Smad partners. *Mol Cell Biol*. 2000; 20:6201–11. [PubMed: 10938097]
50. Rodriguez C, et al. Functional cloning of the proto-oncogene brain factor-1 (BF-1) as a Smad-binding antagonist of transforming growth factor-beta signaling. *J Biol Chem*. 2001; 276:30224–30. [PubMed: 11387330]
51. Seoane J, et al. Integration of Smad and forkhead pathways in the control of neuroepithelial and glioblastoma cell proliferation. *Cell*. 2004; 117:211–23. [PubMed: 15084259]
52. Muzio L, Mallamaci A. Foxg1 confines Cajal-Retzius neuronogenesis and hippocampal morphogenesis to the dorsomedial pallium. *J Neurosci*. 2005; 25:4435–41. [PubMed: 15858069]
53. Ma Q, et al. Neurogenin1 and neurogenin2 control two distinct waves of neurogenesis in developing dorsal root ganglia. *Genes Dev*. 1999; 13:1717–28. [PubMed: 10398684]

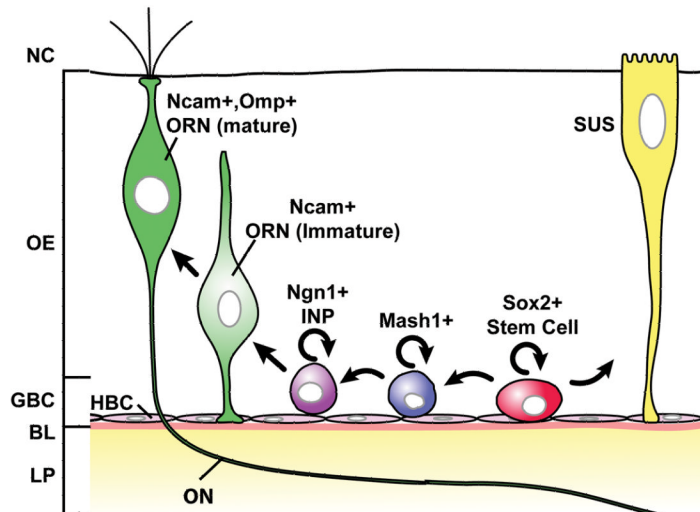


Figure 1.

Scheme of the neuronal differentiation pathway and histological arrangement of cells in the OE. Self-renewing neuronal stem cells (red) give rise to transit amplifying progenitors that express *Mash1* (blue) followed by immediate neuronal precursors (INP) that express *Ngn1* (purple). These cells are detected in the globose basal cell (GBC) layer. INPs divide and daughter cells differentiate into olfactory receptor neurons (ORN, green), which are distinguished by *Ncam* expression. ORNs subsequently mature to express *Omp*. OE stem cells also give rise to sustentacular cells (SUS, yellow; glial lineage). BL, basal lamina; HBC, horizontal basal cells; LP, lamina propria; NC, nasal cavity; OE, olfactory epithelium; ON, olfactory nerve (axons of ORNs).

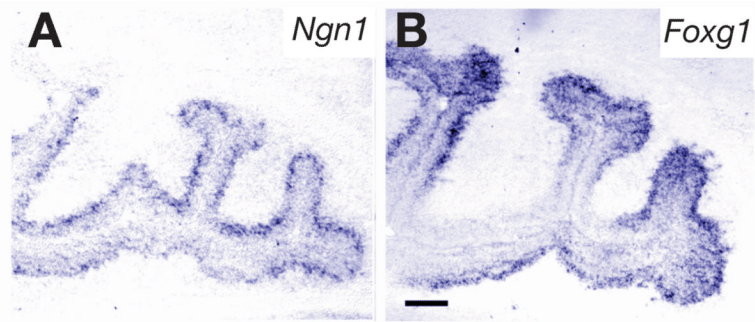


Figure 2. Expression of *Ngn1* and *Foxg1* in the OE at E14.5. ISH with (A) *Ngn1* probe and (B) *Foxg1* probe. *Ngn1* expression is detected in the basal compartment of the OE where the stem and progenitor cells reside. *Foxg1* expression is detected in the basal layer, similar to the *Ngn1* expression pattern. Scale bar = 100 μ m. (copyright 2002, Wiley, Hoboken, NJ, USA)

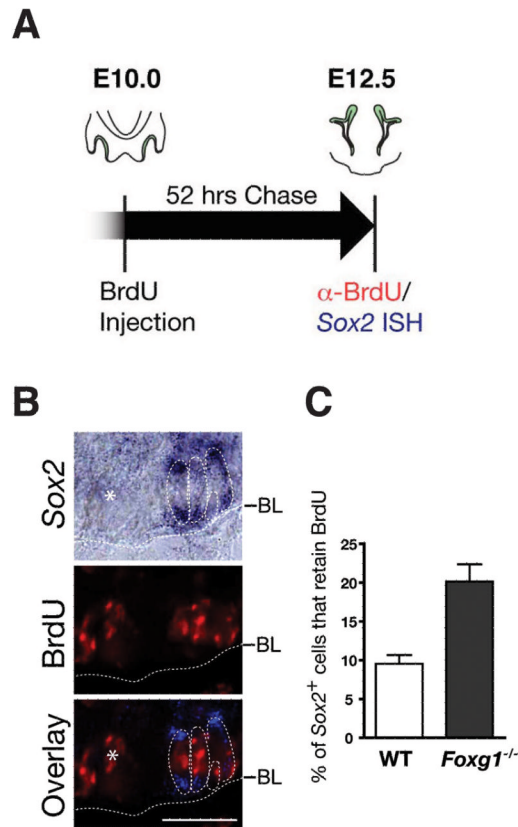


Figure 3.

BrdU 52hr pulse-chase experiment. (A) Scheme of analysis for BrdU pulse-chase experiment. BrdU is injected twice at a 1hr interval at E10.0, embryos are dissected 52 hrs later, and *Sox2* ISH and BrdU immunostaining is performed. (B) *Sox2* ISH and BrdU immuno double staining at E12.5. Images show representative staining. Overlay indicates BrdU image superimposed with digitally converted *Sox2* ISH image. Asterisk indicates BrdU positive, *Sox2* negative cells; *Sox2*/BrdU double positive cells are circled with white break line. BL, basal lamina. Scale bar: 10 μ m. (C) A greater percentage of *Sox2* positive cells retaining high levels of BrdU were observed in *Foxg1*^{-/-} animals when compared to wildtype littermates. Over 50% of fluorescent intensity for BrdU immuno reactivity between background and highest intensity points in the field were scored. Quantification results are illustrated as a histogram of mean \pm SEM (n=3 animals of each genotype).