

# UC San Diego

## UC San Diego Previously Published Works

### Title

Temporal and spatial effects and survival outcomes associated with concordance between tissue and blood KRAS alterations in the pan-cancer setting

### Permalink

<https://escholarship.org/uc/item/1bv394sq>

### Journal

International Journal of Cancer, 146(2)

### ISSN

0020-7136

### Authors

Mardinian, Kristina  
Okamura, Ryosuke  
Kato, Shumei  
[et al.](#)

### Publication Date

2020-01-15

### DOI

10.1002/ijc.32510

Peer reviewed

## **Temporal and Spatial Effects and Survival Outcomes Associated with Concordance between Tissue and Blood *KRAS* Alterations in the Pan-Cancer Setting**

Kristina Mardinian<sup>1\*</sup>, Ryosuke Okamura<sup>1\*</sup>, Shumei Kato<sup>1</sup>, and Razelle Kurzrock<sup>1</sup>

\*These authors contributed equally

### **Affiliations**

<sup>1</sup> Center for Personalized Cancer Therapy and Division of Hematology and Oncology, University of California San Diego Moores Cancer Center, La Jolla, CA, USA.

### **Correspondence**

Kristina Mardinian, MPH  
Center for Personalized Cancer Therapy and Division of Hematology and Oncology, University of California San Diego Moores Cancer Center  
3855 Health Sciences Drive, La Jolla, CA 92093  
[mardiniank@gmail.com](mailto:mardiniank@gmail.com)

### **Running Title**

Analysis of *KRAS* alterations from tissue and blood

### **Acknowledgment**

Funded in part by the Joan and Irwin Jacobs Fund and by National Cancer Institute grants P30 CA023100 (RK).

### **Data Availability**

The data that support the findings of this study are available upon request from the corresponding author. The data are not publicly available due to privacy or ethical restrictions.

### **Disclosures**

Shumei Kato serves as a consultant for Foundation Medicine. Razelle Kurzrock has research funding from Incyte, Genentech, Merck Serono, Pfizer, Sequenom, Foundation Medicine, Guardant Health, Grifols, and Konica Minolta, as well as consultant fees from LOXO, X-Biotech, Actuate Therapeutics, Genentech and NeoMed. She receives speaker fees from Roche, and has an ownership interest in IDbyDNA and Curematch, Inc.

### **Abbreviations**

Circulating tumor DNA (ctDNA), clinical Laboratory Improvement Amendment (CLIA), epidermal growth factor receptor antibody (EGFR antibody), hazard ratio (HR), next-generation sequencing

(NGS), mitogen-activated protein kinase (MAPK), overall survival (OS), variant allele fraction (VAF), variant of unknown significance (VUS).

## ABSTRACT

We investigated the impact of time interval, primary versus metastatic biopsy site, variant allele fraction (VAF), and histology on concordance of *KRAS* alterations in tissue versus circulating tumor DNA (ctDNA), and association of concordance with survival. Blood and tissue were evaluated by next-generation sequencing (NGS) in 433 patients with diverse cancers. Altogether, 101 patients (23.3%) had *KRAS* alterations: 56, ctDNA (12.9%); 81, tissue (18.7%); and 36, both (8.3%). The overall blood and tissue concordance rate for *KRAS* alterations was 85%, but was mainly driven by the large negative/negative subset. Therefore, specificity of one test for the other was high (88.1-94.3%), while sensitivity was not high (44.4-64.3%) and was lower still in patients with >6 versus  $\leq 2$  months between blood and tissue sampling (31.0-40.9% versus 51.2-84.0%) ( $P=0.14$  time interval-dependent sensitivity of blood for tissue;  $P=0.003$ , tissue for blood). Positive concordance rate for *KRAS* alterations was 57.1% versus 27.4% (colorectal versus non-colorectal cancer) ( $P=0.01$ ), but site of biopsy (primary versus metastatic) and VAF (%ctDNA) was not impactful. The presence of *KRAS* alterations in both tests was independently associated with shorter survival from diagnosis (hazard ratio, 1.72; 95% confidence interval, 1.04-2.86) and from recurrent/metastatic disease (1.70; 1.03-2.81). Positive concordance of *KRAS* alterations between ctDNA and tissue was negatively affected by a longer time period between blood and tissue sampling and was higher in colorectal cancer than in other malignancies. The presence of *KRAS* alterations in both tests was an independent prognostic factor for poor survival.

**Key words:** *KRAS*; circulating tumor DNA; next-generation sequencing; survival.

## **NOVELTY AND IMPACT**

Positive concordance between ctDNA and tissue DNA for *KRAS* alterations was inversely associated with time interval between blood and tissue sampling and was higher in colorectal versus non-colorectal cancer. In multivariate analysis, concordant *KRAS* alterations (versus discordant *KRAS* alteration status or no *KRAS* alterations) in blood and tissue correlated with shorter survival, suggesting complementary clinical utility for ctDNA and tissue DNA sequencing techniques in prognostication.

## INTRODUCTION

*KRAS* is a protein in the mitogen-activated protein kinase (MPAK) pathway that is responsible for various aspects of cell growth and regulation, including cell proliferation, apoptosis, and differentiation. Alterations in the *KRAS* oncogene occur frequently and play a major role in many human cancers.<sup>1, 2</sup> As an example, in pancreatic ductal adenocarcinoma, oncogenic *KRAS* is present in more than 90% of cases.<sup>2, 3</sup> *KRAS* is also present in 30%-40% of all colorectal cancer cases and is associated with decreased survival.<sup>1, 2</sup>

Investigation of molecular alterations in cancerous tumors has created a new wave of personalized cancer medicine that uses targeted cancer therapies matched to a patient's specific molecular alterations.<sup>4</sup> Recent research has shown that advancements in genomic testing has led to higher response rates to treatment in patients with advanced cancers.<sup>5</sup> With the availability of these multi-gene panels, malignant tissues have been found to harbor multiple alterations that may differ from patient to patient and, hence, require customized combination therapies.<sup>5</sup> In the case of *KRAS*, mutations may also serve as a negative marker, indicating a contraindication to epidermal growth factor receptor (EGFR) antibody therapy in colorectal cancer.<sup>6, 7</sup>

Interrogating blood-derived circulating tumor DNA (ctDNA) allows for the detection of genetic heterogeneity in cancer without the invasive nature of tissue biopsies. Solid tumors release ctDNA into the bloodstream. The amount present or absent in the blood may be an indicator of tumor burden.<sup>8-10</sup> This ctDNA is collected through a liquid biopsy (i.e., a blood draw) and sequenced in order to identify characterized somatic alterations. Blood-derived ctDNA may provide valuable molecular data as an adjunct to the tumor biopsy for the following reasons: (i) tumor biopsies can be complicated procedures with morbidity; (ii) some tumors are not readily accessible for biopsy; (iii) tissue biopsies can be expensive; (iv) as time elapses, the tissue that was biopsied may become less representative of the tumor, since cancers evolve; (v) genomics performed on a tissue biopsy reflects the alterations that are in the small tissue specimen, while genomics performed on ctDNA may reflect alterations found in shed DNA from multiple

metastatic sites; and (vi) dynamic changes in ctDNA can occur and reflect response to therapy or emergence of resistance. In addition, interrogating ctDNA before or after surgery may provide a predictive tool for risk of recurrence.<sup>11, 12</sup> There are also disadvantages to ctDNA as compared to tissue. For instance, ctDNA is found in only small amounts in the bloodstream, making it difficult to detect alterations. In addition, ctDNA carrying tumor-specific alterations may represent only a small fraction of the total genomic alterations in the tumor, since not all cancer-derived DNA may be shed into the bloodstream. Therefore, variability in concordance rates between blood-derived ctDNA samples and tissue samples can be due to temporal and spatial factors, as well as dynamic changes with therapy and disease evolution.

Several studies have investigated the concordance in molecular alterations between tissue and ctDNA samples. A study conducted in prostate cancer found that, in the majority of patients, a ctDNA assay was sufficient to identify all driver DNA alterations present in matched metastatic tissue.<sup>13</sup> Other studies demonstrated that, among various cancer types, concordance was variable with a range of ~70% to ~98%, depending on the gene(s) examined.<sup>8, 14, 15</sup> Several previous studies evaluated the concordance of *KRAS* alterations between tissue and ctDNA and found overall concordance to range 67-96%.<sup>6, 16-18</sup> These studies did not evaluate the impact of time interval between tissue biopsy and blood draw, nor did they examine the correlation with site of biopsy or the association with outcome for discordant versus concordant *KRAS* alterations.

For this present study, results from tumor biopsies and blood-derived ctDNA biopsies were used to investigate the level of concordance for altered *KRAS* among 433 patients with diverse cancer types in order to determine temporal and spatial effects on concordance across the spectrum of malignancies, as well as to ascertain the relationship between concordance and survival.

## METHODS

### Patients

The molecular profiles of both liquid and tissue biopsies from 433 consecutive eligible patients seen at the UC San Diego Moores Cancer Center starting in June 2014 were reviewed (**Supplemental Figure 1**). Demographics of each of these patients were provided by chart review, including, but not limited to age, gender, cancer diagnosis, tumor origin, date of biopsy report or blood test, date of diagnosis, and survival time. Patients included in the study were analyzed and consent obtained as appropriate in accordance with an internal review board-approved protocol (NCT02478931).

### Next-Generation Sequencing

The ctDNA molecular profiles came from patients with diverse cancers and were provided by Guardant Health Inc. (<http://www.guardanthealth.com/>); tissue testing was performed by Foundation Medicine (<https://www.foundationmedicine.com/genomic-testing#how-does-it-work>). Both laboratories are Clinical Laboratory Improvement Amendment (CLIA)-accredited.

***ctDNA testing:*** As reported in Lanman and colleagues, 5–30 ng of ctDNA was isolated from plasma (two 10 ml Streck tubes drawn for each patient) and sequencing libraries were made with custom in-line barcode molecular tagging and complete sequencing at 15,000× read depth.<sup>19</sup> The panels use hybrid capture followed by next-generation sequencing (NGS) of the crucial exons in a panel of 54–73 genes and report all four major types of genomic alterations (indels, fusions, point mutations, and copy number amplifications). Post-sequencing bioinformatics matches the complementary strands of each barcoded DNA fragment to remove false-positive results.<sup>19</sup> The variant allele fraction (%ctDNA) is calculated as the number of mutated DNA molecules divided by the total number (mutated plus wild type) of DNA fragments at that allele. We used the maximum %ctDNA if a patient had two different *KRAS* alterations, unless we referred to a specific *KRAS* alteration. The majority of cell-free DNA is wild type; hence, the



median %ctDNA of somatic alterations is <0.5%. The analytic sensitivity reaches detection of one to two single-mutant fragments from a 10-ml blood sample (0.1% limit of detection), and the analytic specificity is greater than 99.9999%.<sup>19</sup>

**Tissue NGS**: Tissue NGS was performed at Foundation Medicine with assay panels of 236 or 315 genes as previously described (Cambridge, MA, [www.foundationmedicine.com](http://www.foundationmedicine.com)).<sup>20</sup> Average depth of sequencing was greater than 250x, with 100x at > 99% of exons. This method of sequencing allows for detection of copy number alterations, gene rearrangements, and somatic mutations with 99% specificity and >99% sensitivity for base substitutions at  $\geq 5$  mutant allele frequency and >95% sensitivity for copy number alterations. A threshold of  $\geq 8$  copies for gene amplification was used.

**Variants of Unknown Significance**: Synonymous alterations and other variants of unknown significance (VUS) were excluded and only characterized alterations were included in the analysis.<sup>21</sup>

## **Defining Concordance**

Concordant alterations between ctDNA blood-derived biopsy samples and tissue biopsy samples were defined as a *KRAS* alteration being detected in both samples. If patients had more than one tissue or blood sample, the samples closest together were counted. Concordance between tissue DNA and ctDNA was assessed with overall concordance rate and the Kappa value. Kappa values were interpreted by commonly used agreement categories: 1 (perfect agreement) to 0 (no agreement [the same as would be expected by chance]).

## **Outcome Endpoints and Statistical Analysis**

Difference in overall concordance rate between two groups was compared with Fisher's exact test to assess statistical significance ( $P \leq 0.05$ ). Descriptive characteristics were reported

for all patients and the most common characterized alterations found in both liquid and tissue biopsies were highlighted. Patients were then categorized into groups based on whether they were diagnosed with colorectal cancer or non-colorectal cancers. Survival was examined by the method of Kaplan Meier; patients still alive at the last follow up were censored at that time. Survival time was calculated for three dates of interest; data of diagnosis, date of blood draw for ctDNA, and date of metastatic or recurrent disease. Data cutoff for survival analysis was February 22, 2018. Log-rank test was used to compare Kaplan Meier curves. In terms of the investigation of factors associated with overall survival (OS), variables with  $P$ -value  $<0.15$  in univariate analysis were included in the multivariate Cox-regression model. Statistical analyses were performed by coauthor RO using the IBM SPSS version 25.0.

## RESULTS

### Patients and molecular alterations

This study population consisted of 433 patients with diverse cancers who had both ctDNA and tissue NGS performed. Their median age at diagnosis was 59 years (range, 2 to 91 years) and 237 patients were women (54.7%) (**Table 1**). The most common types of cancers were gastrointestinal, lung, brain, and breast. All but 28 patients had advanced disease that was surgically unresectable, metastatic, or both.

In the 433 patients, the most common non-VUS alterations found in both ctDNA and tissue biopsies were *TP53* (ctDNA: 36.7% of patients, tissue: 49.7% of patients), *KRAS* (ctDNA: 12.9%, tissue: 18.7%), *CDKN2A/B* (ctDNA: 1.9%, tissue: 20.3%), and *EGFR* (ctDNA: 10.6%, tissue: 11.6%) (**Figure 1**).

The types of *KRAS* alterations seen were missense alterations in 70% and amplifications in 37% of patients (ctDNA) versus 91% and 9%, respectively, in tissue (**Supplemental Figure 2**). Altogether, 15 kinds of *KRAS* alterations were seen in this study (in ctDNA or tissue DNA): *KRAS* amplification (N=26); *KRAS* A59T (N=1); *KRAS* D33E (N=1); *KRAS* G12A (N=6); *KRAS* G12C (N=11); *KRAS* G12D (N=19); *KRAS* G12R (N=10); *KRAS* G12S (N=5); *KRAS* G12V (N=15); *KRAS* G13D (N=10); *KRAS* K117N (N=2); *KRAS* Q61H (N=1); *KRAS* Q61K (N=1); *KRAS* Q61R (N=1); and *KRAS* V14I (N=1).

Overall, 101 patients (23.3% of 433 tumors) harbored a *KRAS* alteration: 20 patients (4.6% of 433) had *KRAS* found only in ctDNA; 45 (10.3% of 433) had *KRAS* only in tissue; and 36 (8.3% of 433) in both (**Supplemental Figure 1**).

### Overall Concordance

**Temporal effects and overall concordance:** Overall concordance for *KRAS* alterations in blood ctDNA versus tissue was 85.0% (**Table 2**). When comparing the concordance rate between

the 165 patients who had both ctDNA and tissue biopsy within 2 months of each other versus the 199 patients with the time period being >6 months, the concordance rate was 85.5% versus 83.4% ( $P=0.67$ ) (**Table 2**). The concordance rate for subtypes of the more common *KRAS* alterations was consistently over 90% regardless of the time interval between tissue and ctDNA (**Supplemental Tables 1 and 2**) (keeping in mind that, because of the small numbers of patients with each *KRAS* alteration subtype, the ability to analyze statistical differences was limited).

**Spatial effects and overall concordance:** Concordance between ctDNA and tissue for *KRAS* alterations was not dependent on whether the tissue biopsy site was primary or metastatic disease (86.4% versus 83.4%;  $P=0.42$ ) (**Table 2**).

**Disease histology and overall concordance:** Concordance rates for *KRAS* alterations were not statistically different in patients with colorectal versus non-colorectal cancers (77.8% versus 86.0%;  $P=0.15$ ) (**Supplemental Table 3**).

**%ctDNA (variant allele frequency) and overall concordance:** Concordance rate also did not differ when dichotomized by %ctDNA (using the median (1.55%) %ctDNA for *KRAS* alterations): 84.2% versus 90%;  $P=0.66$  (**Supplemental Table 4**) (but only small numbers of patients were assessable).

### **Positive concordance (effects of temporal, spatial, and histologic factors as well as variant allele fraction)**

**Figure 2** shows that positive concordance was 35.6%. Positive concordance decreased from 46.7% to 21.4% when the time period between blood draw and tissue biopsy was  $\leq 2$  months versus over 6 months ( $P=0.02$ ) (**Table 2**). Positive concordance did not differ depending on whether the tissue biopsy was from the primary or metastatic site (29.5% versus 40.4%;  $P=0.30$ ) (**Table 2**). The positive concordance rate for *KRAS* alterations in colorectal cancer was higher than in non-colorectal cancer (57.1% versus 27.4%,  $P=0.01$ ) (**Figure 2, Supplemental**

**Table 3, and Supplemental Figure 3).** %ctDNA was not correlated with positive concordance (**Supplemental Table 4**); positive concordance was also similar (92.3% and 92.9%, respectively for %ctDNA <1.55% and  $\geq$ 1.55%) when only the 27 patients with  $\leq$ 6 months between tests were considered (data not shown).

### **Accuracy of ctDNA for tissue DNA for KRAS alterations and vice versa**

As mentioned earlier, the prevalence of *KRAS* alterations in ctDNA was 12.9% while the prevalence of *KRAS* alterations in tissue was 18.7%. **Supplemental Table 5** shows that the positive predictive power of ctDNA for tissue DNA positivity (which is equivalent to the sensitivity of tissue for ctDNA. **Supplemental Table 6**) for *KRAS* alterations was 64.3%. When comparing between the patients whose blood and tissue samples were  $\leq$ 2 months apart and those with the time period being >6 months, the value was 84% and 40.9% ( $P=0.003$ ). Also, the positive predictive power of tissue for ctDNA positivity (which is equivalent to the sensitivity of ctDNA for tissue) for *KRAS* alterations was 44.4%. The value for the patients whose blood and tissue samples were  $\leq$ 2 months apart versus >6 months apart was 51.2% versus 31%, respectively ( $P=0.14$ ).

In contrast, specificity and negative predictive power of ctDNA for tissue and vice versa were 94.3% and 88.1% , and did not differ regardless of the time interval between tests (**Supplemental Tables 5 and 6**).

### **Survival analysis**

**Patients with discordant or absent KRAS alterations live longer when compared to patients with concordant KRAS alterations (N = 433 patients):** Univariate and multivariate analyses were performed to determine factors associated with outcome. In multivariate analysis of all 433 patients, older age ( $\geq$ 60 years) and the presence of *KRAS*

alterations in both ctDNA and tissue (versus presence in one or the other or in neither) were associated with a shorter OS (**Table 3**). The multivariate hazard ratios (HRs) (95% confidence interval; *P* values) were 1.72 (1.04-2.86; *P*=0.04), 1.52 (0.94-2.46; *P*=0.09), and 1.70 (1.03-2.81; *P*=0.04) when OS was measured from diagnosis, time of blood sample for ctDNA analysis, and time of recurrent/metastatic disease, respectively. **Figure 3** further demonstrates that, regardless of whether survival is measured from diagnosis, from blood draw, or from time of advanced/metastatic disease, patients with concordant (*KRAS* alterations in both blood and tissue) versus discordant *KRAS* alterations (*KRAS* in blood or tissue but not both) live longer (all *P* values significant or trend). Patients with concordant versus no *KRAS* alterations also live longer. However, patients with discordant *KRAS* alterations show no difference in survival as compared with those with no *KRAS* alterations. The observations were analogous when only the 234 patients with  $\leq 6$  months between blood draw and tissue biopsy were evaluated (**Supplemental Figure 4**).

**In patients with *KRAS* alterations, those with discordant *KRAS* status live longer when compared to patients with concordant blood and tissue *KRAS* status (N = 101 patients):** The OS was significantly shorter (or trended to be shorter) (depending on the start point of survival analysis) in univariate and multivariate analysis of factors affecting OS in the 101 patients with *KRAS* alterations, when comparing those with *KRAS* alterations in both blood and tissue versus those with *KRAS* alterations in either blood or tissue, but not both (**Figure 3** and **Supplemental Table 7**). Kaplan Meier curves demonstrate that these trends persist when only the 59 patients with *KRAS* alterations and  $\leq 6$  months between blood draw and tissue sample were analyzed—patients with *KRAS* alterations in both blood and tissue versus only blood or only tissue had a trend toward shorter survival regardless of whether survival was measured from time of diagnosis, time of ctDNA blood draw or time of recurrent/metastatic disease (**Supplemental Figure 4: *P*=0.06, 0.06 and 0.16, respectively**).

## DISCUSSION

NGS has unveiled useful genomic biomarkers for predicting diagnosis, prognosis, and response to cancer treatment.<sup>22-27</sup> NGS can be performed on either tissue or blood-derived ctDNA; these technologies may be complementary. Herein, by using the data from 433 patients with diverse cancer types, we assessed the effect of temporal (time interval between tissue and blood sample) and spatial (tissue from primary versus metastatic site) factors on concordance of *KRAS* alterations in tissue and ctDNA, and their association with survival.

We found that 23.3% of diverse cancer patients had a *KRAS* alteration; 12.9% in ctDNA and 18.7% in tissue (8.3% in both). These percentages are consistent with a previous large-scale survey of over 78,000 tumor tissues showing *KRAS* alterations in 22% of cancers.<sup>28</sup> In our dataset, genomic alterations (in either blood, tissue or both) were also commonly seen in *TP53* (59.6% of patients), *CDKN2A/B* (20.6%), and *EGFR* (17.6%) (**Figure 1**). For the most part, alterations in ctDNA and tissue were found in a similar percentage of patients. However, *CDKN2A/B* loss was found in only 1.9% of patients in ctDNA, but in 20.3% of patients by tissue NGS; this discrepancy is most likely due to the failure to capture allelic loss in older panels of ctDNA sequencing.

In regard to pathogenic *KRAS* alterations, gene amplification and 14 kinds of mutation were seen. Further studies may be required to determine whether the impact of these alterations differs or not. Interestingly, a study in colorectal cancer showed that alterations that occurred in codons 59, 61, 117, and 146 had higher MAPK activity than those in codons 12 and 13 and that the mutations with higher MAPK activity were associated with a shorter survival.<sup>29</sup>

The overall concordance rate for *KRAS* alterations in ctDNA and tissue was 85.0% (**Table 2**). When assessed according to subtype of *KRAS* alteration, the concordance rate was over 90% for each subtype (**Supplemental Tables 1 and 2**). In terms of the temporal ( $\leq 2$  months versus  $> 6$  months between blood draw and tissue biopsy) and spatial (tissue biopsy site was primary tumor versus metastatic sites) effects on the overall concordance rate, no statistical differences

were observed (85.5% versus 83.4% [ $P=0.67$ ], and 86.4% versus 83.4% [ $P=0.42$ ], respectively). Further, overall concordance did not vary by %ctDNA (**Supplemental Table 4**). However, the overall concordance rates were largely impacted by the ctDNA-negative/tissue-negative population. In fact, when limited to the patients with *KRAS* alterations, the positive concordance rate (positive in both ctDNA and tissue divided by positive in ctDNA or positive in tissue or in both) was only 35.6% (**Figure 2**); further, *KRAS* alteration-positive concordance significantly decreased from 46.7% to 21.4% when the time period between blood draw and tissue biopsy was  $\leq 2$  months versus  $>6$  months ( $P=0.02$ ); there was however no statistical difference when tissue biopsy was from primary or metastatic site (**Table 2**). In comparison, a prior study in colorectal cancer also showed a high overall concordance rate ( $\sim 90\%$ ) for *RAS* alterations in ctDNA versus tissue<sup>18</sup>; although positive concordance was not formally analyzed, that study did demonstrate that some patients had discordant results, albeit at a lesser frequency than in our study, perhaps because the population was limited to colorectal cancer or because the blood and tissue samples were taken at time points close together. Indeed, in our patients, the positive concordance rate for *KRAS* alterations in colorectal cancer was higher than in non-colorectal cancer (57.1% versus 27.4%,  $P=0.01$ ) (**Figure 2**).

The positive predictive power of ctDNA for tissue DNA positivity (= the sensitivity of tissue for ctDNA) was 64.3% for detecting *KRAS* alterations (**Supplemental Tables 5 and 6**). This means that, of the *KRAS*-altered ctDNA tests, 64.3% were positive by tissue. The value was substantially lower when blood and tissue samples were  $>6$  months apart than when they were  $\leq 2$  months apart (40.9% versus 84.0%;  $P=0.003$ ). The positive predictive power of tissue for ctDNA positivity (= the sensitivity of ctDNA for tissue) was 44.4%. This means that, of the *KRAS*-altered tissue tests, 44.4% were positive by ctDNA. This value also showed a trend to be lower when blood and tissue samples were  $>6$  months apart than when they were  $\leq 2$  months apart (31.0% versus 51.2%;  $P=0.14$ ). Hence, substantial numbers of the *KRAS*-altered ctDNA tests were not picked up by tissue testing and vice versa; further, in each case, this dichotomy increased with greater time interval between the blood sample and tissue biopsy dates (albeit



the increase in discrepancy was only statistically significant for the ctDNA tests that were not picked up by tissue). In contrast, specificity and negative predictive power of ctDNA for tissue (= the negative predictive power and specificity of tissue for ctDNA, respectively) remained high (94.3% and 88.1%), regardless of the time interval between tests. These findings suggested that, if one test (ctDNA or tissue DNA) showed negative for *KRAS* alterations, the other would also show negative, regardless of the time interval.

In the multivariate analysis of all 433 patients, the presence of *KRAS* alterations in both ctDNA and tissue (versus not [“not” means the presence of *KRAS* alterations in tissue alone, blood alone, or neither]) was an independent poor prognostic factor for patients’ overall survival, even if the time interval between blood draw and tissue biopsy was considered as a confounder (**Table 3**). Interestingly, the survival of patients with no *KRAS* alterations did not differ from that of patients with discordant *KRAS* alterations, while the survival of patients with concordant *KRAS* alterations in ctDNA and tissue was significantly worse (**Figure 3**). A prior systematic review analyzing ctDNA results in diverse cancer patients showed that *KRAS* alterations were associated with a poorer overall survival (HR=2.02, 95%CI 1.63–2.51).<sup>30</sup> However, our findings suggested that *KRAS* alterations in both tests were more meaningful as a prognostic factor. In addition, even among 101 patients with *KRAS* alterations, the presence of *KRAS* alterations in both ctDNA and tissue (i.e., concordant) still tended to be a strong prognostic factor for poor survival (the HRs ranged 1.81 to 2.30 [*P*-values 0.02-0.13], **Figure 3** and **Supplemental Table 7**). It is unclear why concordant blood and tissue alterations are associated with poorer survival. Alterations were not more concordant with higher %ctDNA (**Supplemental Table 4**), which has previously been shown to be associated with poorer survival.<sup>8</sup> To our knowledge, this phenomenon is not previously reported and, hence, deserves additional investigation.

There were several limitations in this study. First, prior treatment type at time of blood draw or tissue biopsy was not considered. It was previously reported that *KRAS* status in ctDNA could be affected by specific therapeutic pressure such as administration of EGFR antibodies.<sup>31, 32</sup> Indeed, 7 out of 20 patients who had *KRAS* alterations only in ctDNA received anti-EGFR

therapies prior to their ctDNA analyses in this series. Moreover, 3 additional patients received systemic therapies with other targeted agents, which may lead to the emergence of *KRAS* alterations as a mechanism of acquired resistance. Second, the number of samples in each cancer type depended on the physician choice to examine ctDNA or tissue by NGS. Third, the tissue and ctDNA tests were performed by different vendors, though this could also be considered an advantage of the study in that it permitted a comprehensive comparison (which is a topic of interest to the liquid biopsy field). Finally, while %ctDNA was not associated with concordance, the number of patients evaluable was small (since, by definition, only patients positive for *KRAS* in ctDNA could be assessed) and may have precluded robust comparisons.

In conclusion, *KRAS* alterations were seen in 23.3% of pan-cancer patients and the overall concordance between ctDNA and tissue was 85.0%. Temporal and spatial effects did not impact the overall concordance of *KRAS* alterations. High overall concordance was mainly driven by the fact that, if either blood or tissue was negative for a *KRAS* alteration, the other was likely negative as well. In contrast, substantial numbers of the *KRAS*-altered ctDNA tests were not picked up by tissue testing and vice versa. Positive concordance was significantly higher when the time interval between blood draw and tissue biopsy was  $\leq 2$  months versus  $> 6$  months. This result is consistent with prior studies that show that tumors evolve over time.<sup>33</sup> Positive concordance was also higher in colorectal cancer versus other tumors. Importantly, concordance for *KRAS* alteration positivity between blood and ctDNA was an independent factor associated with a significantly worse survival as compared to patients with no *KRAS* alterations or with discordant *KRAS* alterations. Further studies are warranted to evaluate the prognostic impact of concordance between blood and tissue sequencing for other molecular alterations.

## REFERENCES

1. Arrington AK, Heinrich EL, Lee W, Duldulao M, Patel S, Sanchez J, Garcia-Aguilar J, Kim J. Prognostic and predictive roles of KRAS mutation in colorectal cancer. *International journal of molecular sciences* 2012;**13**: 12153-68.
2. Garrido-Laguna I, Hong DS, Janku F, Nguyen LM, Falchook GS, Fu S, Wheler JJ, Luthra R, Naing A, Wang X, Kurzrock R. KRASness and PIK3CAness in patients with advanced colorectal cancer: outcome after treatment with early-phase trials with targeted pathway inhibitors. *PloS one* 2012;**7**: e38033.
3. Eser S, Schnieke A, Schneider G, Saur D. Oncogenic KRAS signalling in pancreatic cancer. *British journal of cancer* 2014;**111**: 817-22.
4. Kurzrock R, Giles FJ. Precision oncology for patients with advanced cancer: the challenges of malignant snowflakes. *Cell cycle (Georgetown, Tex)* 2015;**14**: 2219-21.
5. Wheler JJ, Janku F, Naing A, Li Y, Stephen B, Zinner R, Subbiah V, Fu S, Karp D, Falchook GS, Tsimberidou AM, Piha-Paul S, et al. Cancer Therapy Directed by Comprehensive Genomic Profiling: A Single Center Study. *Cancer research* 2016;**76**: 3690-701.
6. Schmiegel W, Scott RJ, Dooley S, Lewis W, Meldrum CJ, Pockney P, Draganic B, Smith S, Hewitt C, Philimore H, Lucas A, Shi E, et al. Blood-based detection of RAS mutations to guide anti-EGFR therapy in colorectal cancer patients: concordance of results from circulating tumor DNA and tissue-based RAS testing. *Molecular oncology* 2017;**11**: 208-19.
7. Lievre A, Bachet JB, Le Corre D, Boige V, Landi B, Emile JF, Cote JF, Tomasic G, Penna C, Ducreux M, Rougier P, Penault-Llorca F, et al. KRAS mutation status is predictive of response to cetuximab therapy in colorectal cancer. *Cancer research* 2006;**66**: 3992-5.
8. Schwaederle M, Husain H, Fanta PT, Piccioni DE, Kesari S, Schwab RB, Patel SP, Harismendy O, Ikeda M, Parker BA, Kurzrock R. Use of Liquid Biopsies in Clinical Oncology: Pilot Experience in 168 Patients. *Clinical cancer research : an official journal of the American Association for Cancer Research* 2016;**22**: 5497-505.
9. Schwaederle M, Husain H, Fanta PT, Piccioni DE, Kesari S, Schwab RB, Banks KC, Lanman RB, Talasz A, Parker BA, Kurzrock R. Detection rate of actionable mutations in diverse cancers using a biopsy-free (blood) circulating tumor cell DNA assay. *Oncotarget* 2016;**7**: 9707-17.
10. Kidess-Sigal E, Liu HE, Triboulet MM, Che J, Ramani VC, Visser BC, Poultsides GA, Longacre TA, Marziali A, Vysotskaia V, Wiggin M, Heirich K, et al. Enumeration and targeted analysis of KRAS, BRAF and PIK3CA mutations in CTCs captured by a label-free platform: Comparison to ctDNA and tissue in metastatic colorectal cancer. *Oncotarget* 2016;**7**: 85349-64.
11. Sclafani F, Chau I, Cunningham D, Hahne JC, Vlachogiannis G, Eltahir Z, Lampis A, Braconi C, Kalaitzaki E, De Castro DG, Wotherspoon A, Capdevila J, et al. KRAS and BRAF mutations in circulating tumour DNA from locally advanced rectal cancer. *Scientific reports* 2018;**8**: 1445.
12. Mok T, Wu YL, Lee JS, Yu CJ, Sriuranpong V, Sandoval-Tan J, Ladrera G, Thongprasert S, Srimuninnimit V, Liao M, Zhu Y, Zhou C, et al. Detection and Dynamic Changes of EGFR Mutations from Circulating Tumor DNA as a Predictor of Survival Outcomes in NSCLC Patients Treated with First-line Intercalated Erlotinib and Chemotherapy. *Clinical cancer research : an official journal of the American Association for Cancer Research* 2015;**21**: 3196-203.
13. Wyatt AW, Annala M, Aggarwal R, Beja K, Feng F, Youngren J, Foye A, Lloyd P, Nykter M, Beer TM, Alumkal JJ, Thomas GV, et al. Concordance of Circulating Tumor DNA and Matched Metastatic Tissue Biopsy in Prostate Cancer. *Journal of the National Cancer Institute* 2017;**109**.

14. Danese E, Minicozzi AM, Benati M, Montagnana M, Paviati E, Salvagno GL, Lima-Oliveira G, Gusella M, Pasini F, Lippi G, Guidi GC. Comparison of genetic and epigenetic alterations of primary tumors and matched plasma samples in patients with colorectal cancer. *PLoS one* 2015;**10**: e0126417.
15. Schwaederle MC, Patel SP, Husain H, Ikeda M, Lanman RB, Banks KC, Talasz A, Bazhenova L, Kurzrock R. Utility of Genomic Assessment of Blood-Derived Circulating Tumor DNA (ctDNA) in Patients with Advanced Lung Adenocarcinoma. *Clinical cancer research : an official journal of the American Association for Cancer Research* 2017;**23**: 5101-11.
16. Bernard V, Kim DU, San Lucas FA, Castillo J, Allenson K, Mulu FC, Stephens BM, Huang J, Semaan A, Guerrero PA, Kamyabi N, Zhao J, et al. Circulating Nucleic Acids Are Associated With Outcomes of Patients With Pancreatic Cancer. *Gastroenterology* 2019;**156**: 108-18.e4.
17. Kato S, Okamura R, Baumgartner JM, Patel H, Leichman L, Kelly K, Sicklick JK, Fanta PT, Lippman SM, Kurzrock R. Analysis of Circulating Tumor DNA and Clinical Correlates in Patients with Esophageal, Gastroesophageal Junction, and Gastric Adenocarcinoma. *Clinical cancer research : an official journal of the American Association for Cancer Research* 2018;**24**: 6248-56.
18. Grasselli J, Elez E, Caratu G, Matito J, Santos C, Macarulla T, Vidal J, Garcia M, Vieitez JM, Paez D, Falco E, Lopez Lopez C, et al. Concordance of blood- and tumor-based detection of RAS mutations to guide anti-EGFR therapy in metastatic colorectal cancer. *Annals of oncology : official journal of the European Society for Medical Oncology* 2017;**28**: 1294-301.
19. Lanman RB, Mortimer SA, Zill OA, Sebisano D, Lopez R, Blau S, Collisson EA, Divers SG, Hoon DS, Kopetz ES, Lee J, Nikolinakos PG, et al. Analytical and Clinical Validation of a Digital Sequencing Panel for Quantitative, Highly Accurate Evaluation of Cell-Free Circulating Tumor DNA. *PLoS one* 2015;**10**: e0140712.
20. Frampton GM, Fichtenholtz A, Otto GA, Wang K, Downing SR, He J, Schnall-Levin M, White J, Sanford EM, An P, Sun J, Juhn F, et al. Development and validation of a clinical cancer genomic profiling test based on massively parallel DNA sequencing. *Nature biotechnology* 2013;**31**: 1023-31.
21. Schwaederle M, Daniels GA, Piccioni DE, Fanta PT, Schwab RB, Shimabukuro KA, Parker BA, Kurzrock R. On the Road to Precision Cancer Medicine: Analysis of Genomic Biomarker Actionability in 439 Patients. *Molecular cancer therapeutics* 2015;**14**: 1488-94.
22. Khagi Y, Goodman AM, Daniels GA, Patel SP, Sacco AG, Randall JM, Bazhenova LA, Kurzrock R. Hypermutated Circulating Tumor DNA: Correlation with Response to Checkpoint Inhibitor-Based Immunotherapy. *Clinical cancer research : an official journal of the American Association for Cancer Research* 2017;**23**: 5729-36.
23. Ikeda S, Schwaederle M, Mohindra M, Fontes Jardim DL, Kurzrock R. MET alterations detected in blood-derived circulating tumor DNA correlate with bone metastases and poor prognosis. *Journal of hematology & oncology* 2018;**11**: 76.
24. Schwaederle M, Zhao M, Lee JJ, Lazar V, Leyland-Jones B, Schilsky RL, Mendelsohn J, Kurzrock R. Association of Biomarker-Based Treatment Strategies With Response Rates and Progression-Free Survival in Refractory Malignant Neoplasms: A Meta-analysis. *JAMA oncology* 2016;**2**: 1452-9.
25. Kato S, Janku F. Cell-free DNA as a novel marker in cancer therapy. *Biomarkers in medicine* 2015;**9**: 703-12.
26. Schwaederle M, Chattopadhyay R, Kato S, Fanta PT, Banks KC, Choi IS, Piccioni DE, Ikeda S, Talasz A, Lanman RB, Bazhenova L, Kurzrock R. Genomic Alterations in Circulating Tumor DNA from Diverse Cancer Patients Identified by Next-Generation Sequencing. *Cancer research* 2017;**77**: 5419-27.
27. Kato S, Krishnamurthy N, Banks KC, De P, Williams K, Williams C, Leyland-Jones B, Lippman SM, Lanman RB, Kurzrock R. Utility of Genomic Analysis In Circulating Tumor DNA from Patients with Carcinoma of Unknown Primary. *Cancer research* 2017;**77**: 4238-46.
28. Prior IA, Lewis PD, Mattos C. A comprehensive survey of Ras mutations in cancer. *Cancer research* 2012;**72**: 2457-67.

29. Loree JM, Miron B, Holla V, Overman MJ, Pereira AAL, Lam M, Morris VK, Raghav KPS, Routbort M, Shaw KR, Burck N, Sharivkin R, et al. Not all RAS mutations created equal: Functional and clinical characterization of 80 different KRAS and NRAS mutations. *Journal of Clinical Oncology* 2017;**35**: 3589-.
30. Zhuang R, Li S, Li Q, Guo X, Shen F, Sun H, Liu T. The prognostic value of KRAS mutation by cell-free DNA in cancer patients: A systematic review and meta-analysis. *PloS one* 2017;**12**: e0182562.
31. Del Re M, Tiseo M, Bordi P, D'Incecco A, Camerini A, Petrini I, Lucchesi M, Inno A, Spada D, Vasile E, Citi V, Malpeli G, et al. Contribution of KRAS mutations and c.2369C > T (p.T790M) EGFR to acquired resistance to EGFR-TKIs in EGFR mutant NSCLC: a study on circulating tumor DNA. *Oncotarget* 2017;**8**: 13611-9.
32. Vidal J, Muinelo L, Dalmases A, Jones F, Edelstein D, Iglesias M, Orrillo M, Abalo A, Rodriguez C, Brozos E, Vidal Y, Candamio S, et al. Plasma ctDNA RAS mutation analysis for the diagnosis and treatment monitoring of metastatic colorectal cancer patients. *Annals of oncology : official journal of the European Society for Medical Oncology* 2017;**28**: 1325-32.
33. Swanton C. Intratumor heterogeneity: evolution through space and time. *Cancer research* 2012;**72**: 4875-82.

## FIGURE LEGENDS

**Figure 1.** Frequent alterations among blood-derived ctDNA and tissue biopsy (N=433).

Percentage denotes percent of patients with an alteration. Most common alterations in both ctDNA and tissue in 433 patients with diverse cancers who had both ctDNA and tissue biopsy are shown. VUS alterations were excluded. If two different samples were collected for a patient, only the tissue and blood samples closest together timewise were counted.

**Figure 2.** *KRAS* alterations among 433 patients, categorized by colorectal cancer and non-colorectal cancers for patients with  $\leq 2$  months, >2-6 months, and >6 months between blood draw and tissue biopsy.

If two different samples were collected for a patient, only the tissue and blood samples closest together timewise were counted. Numbers in parentheses represent number of patients.

**Figure 3.** Survival analysis among patients with concordant *KRAS* alterations, those with discordant *KRAS* alterations, and those with no *KRAS* alterations (N=433 patients).

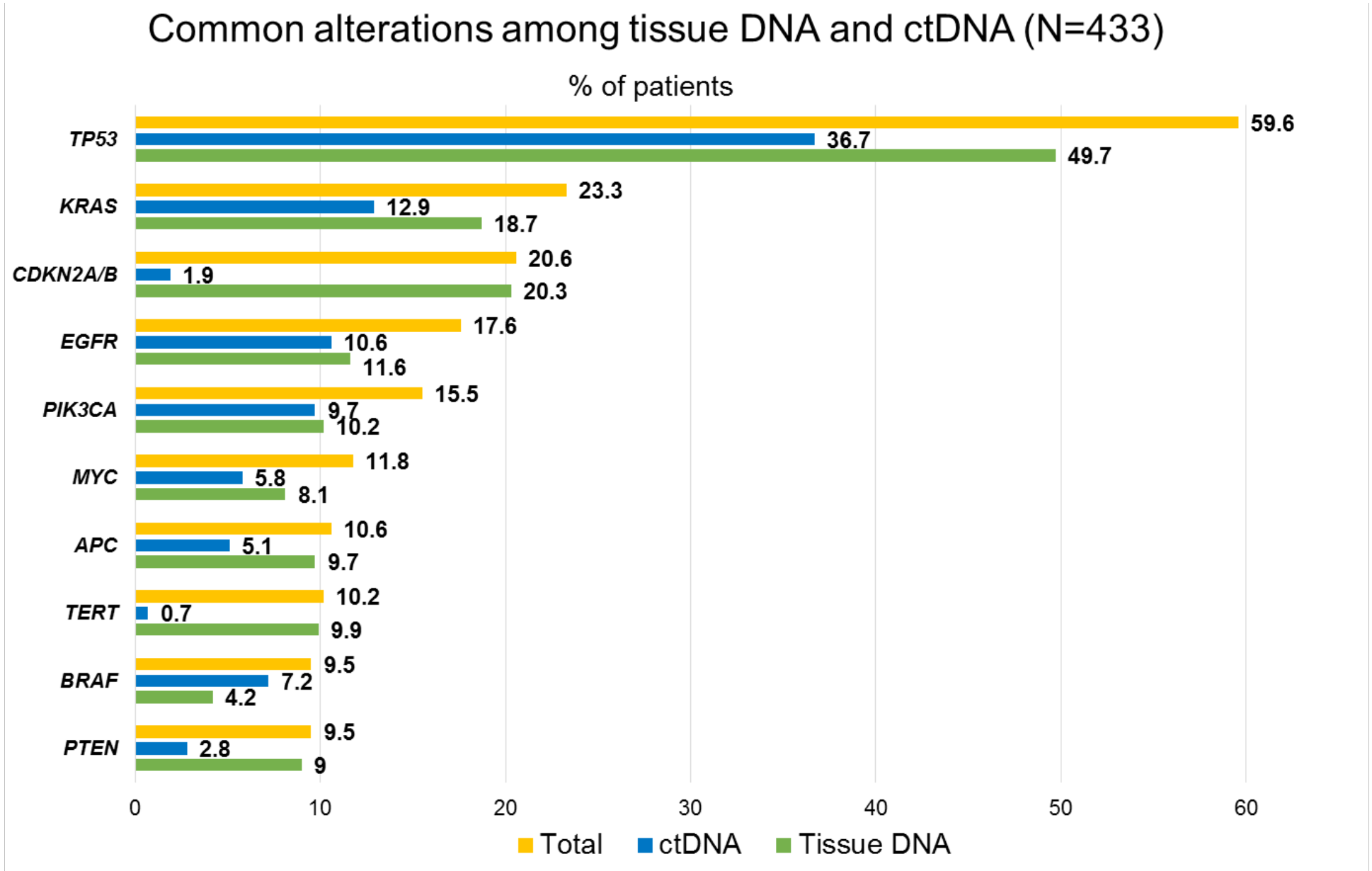
**Panel 3A.** Overall survival from date of diagnosis;

**Panel 3B.** Overall survival from date of blood draw for ctDNA test;

**Panel 3C.** Overall survival from date of metastatic or recurrent disease. \*Twenty-eight patients were excluded from this analysis because their disease was surgically resected.

## FIGURES

**Figure 1.** Frequent alterations among blood-derived ctDNA and tissue biopsy (N=433).



**Figure 2:** *KRAS* alterations among 433 patients, categorized by colorectal cancer and non-colorectal cancers for patients with  $\leq 2$  months,  $>2-6$  months, and  $>6$  months between blood draw and tissue biopsy (see also Supplemental Figure 3).



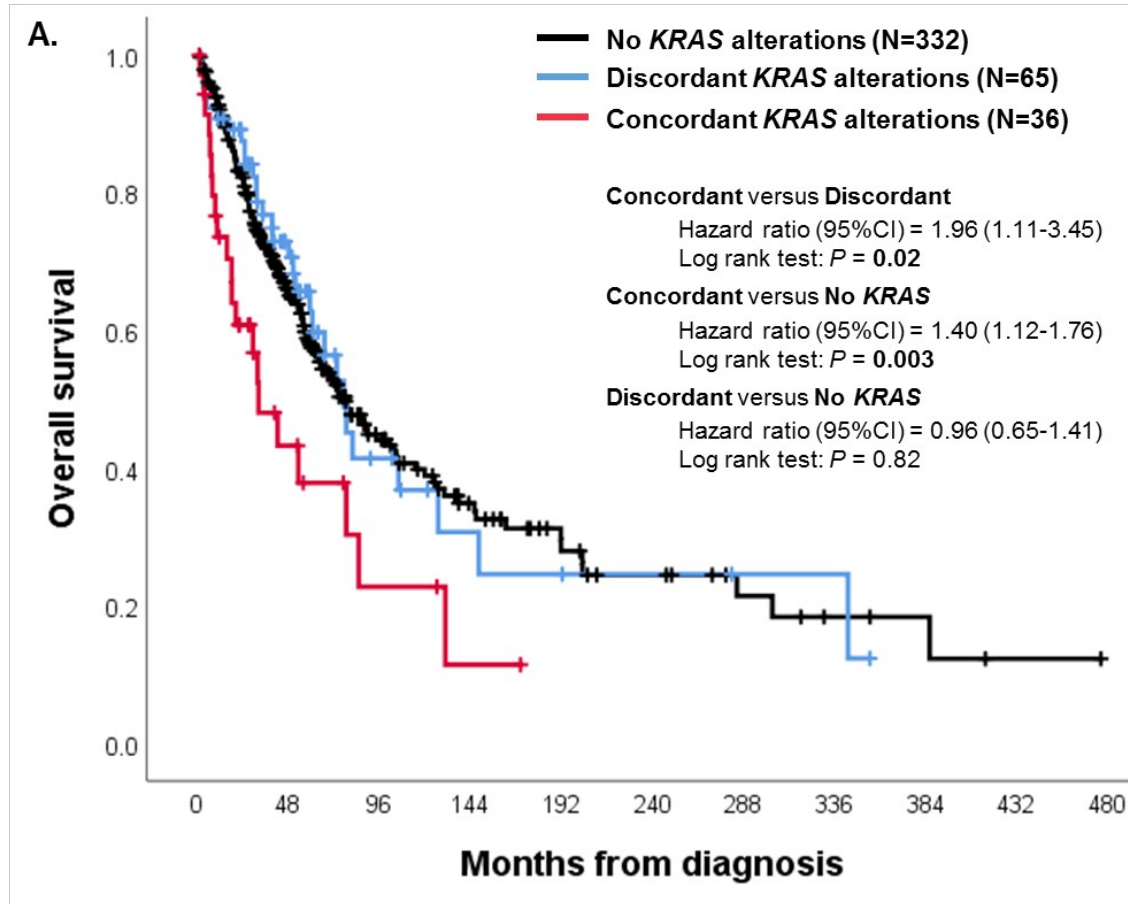
	Any time	Time between tissue biopsy and blood draw		
		≤2 months	>2-6 months	>6 months
<b>All types of cancer</b>				
	<b>KRAS alteration was detected in 101 of 433 patients (23.3%).</b>	<b>KRAS alteration was detected in 45 of 165 patients (27.3%).</b>	<b>KRAS alteration was detected in 14 of 69 patients (20.3%).</b>	<b>KRAS alteration was detected in 42 of 199 patients (21.1%).</b>
<b>Colorectal cancer vs. non-colorectal cancer</b>				
<b>Colorectal cancer patients</b>				
	<b>KRAS alteration was detected in 28 of 54 patients (51.9%).</b>	<b>KRAS alteration was detected in 12 of 22 patients (54.5%).</b>	<b>KRAS alteration was detected in 4 of 8 patients (50.0%).</b>	<b>KRAS alteration was detected in 12 of 24 patients (50.0%).</b>
<b>Non-colorectal cancer patients</b>				
	<b>KRAS alteration was detected in 73 of 379 patients (19.3%).</b>	<b>KRAS alteration was detected in 33 of 143 patients (23.1%).</b>	<b>KRAS alteration was detected in 10 of 61 patients (16.4%).</b>	<b>KRAS alteration was detected in 30 of 175 patients (17.1%).</b>
<span style="color: green;">●</span> KRAS alteration in tissue DNA <span style="color: darkblue;">●</span> KRAS alteration in both tissue DNA and ctDNA <span style="color: lightblue;">●</span> KRAS alteration in ctDNA				

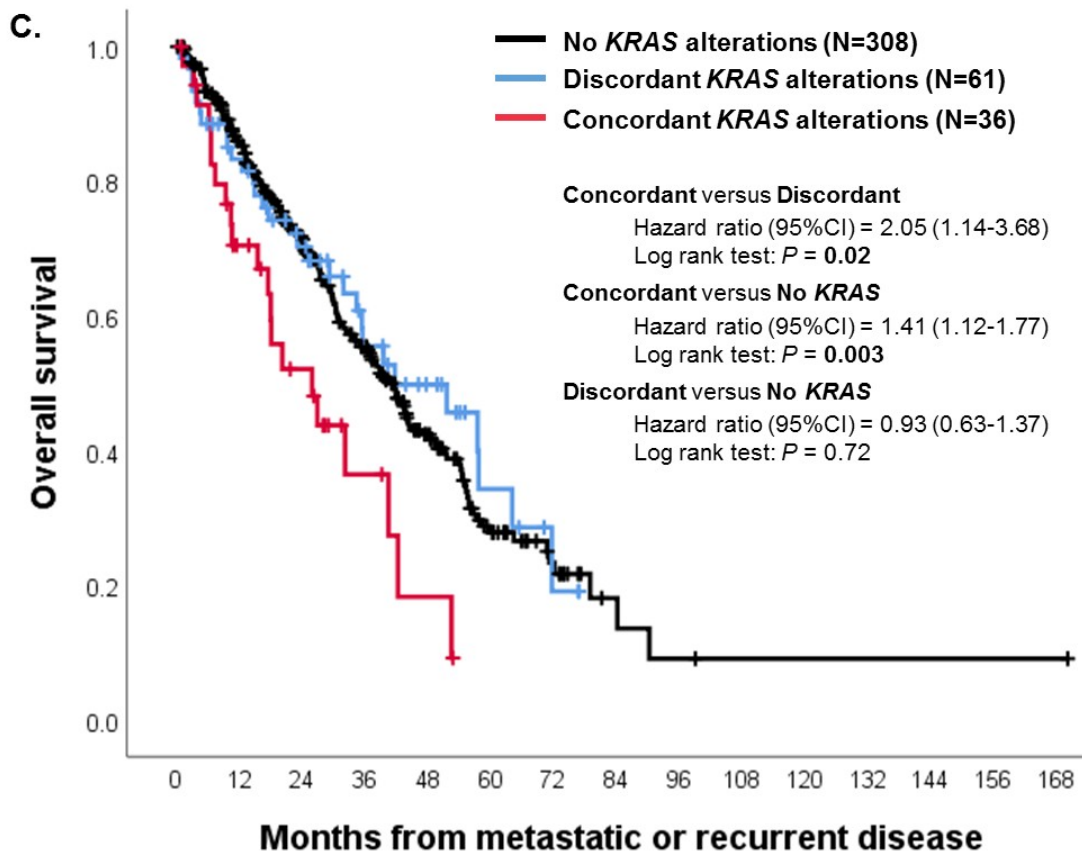
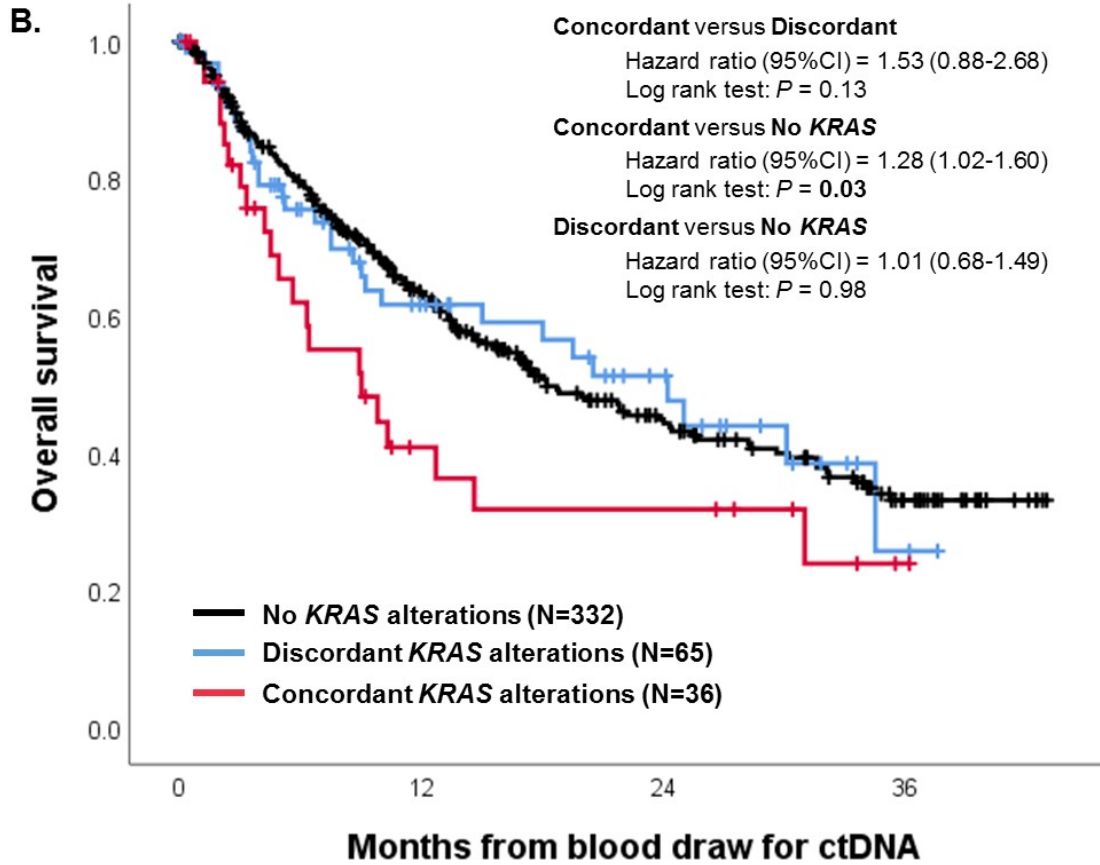
**Figure 3.** Survival analysis among patients with concordant *KRAS* alterations, those with discordant *KRAS* alterations, and those with no *KRAS* alterations (N=433 patients).

**Panel 3A.** Overall survival from date of diagnosis;

**Panel 3B.** Overall survival from date of blood draw for ctDNA test;

**Panel 3C.** Overall survival from date of metastatic or recurrent disease. \*Twenty-eight patients were excluded from this analysis because their disease was surgically resected.





## TABLES

**Table 1.** Patient characteristics among the 433 patients that had both blood-derived ctDNA and tissue testing done.

<b>Patient Characteristics</b>	<b>Total Patients N=433</b>
<b>Age at diagnosis (years: median, range)</b>	59 (2-91)
<b>Gender (N, %)</b>	
Women	237 (54.7%)
Men	196 (45.3%)
<b>Type of cancer (N, %)</b>	
Gastrointestinal*	104 (24.0%)
Lung	78 (18.0%)
Brain	56 (12.9%)
Breast	50 (11.5%)
Hepatic/pancreatic/biliary	40 (9.2%)
Head and neck	31 (7.2%)
Gynecologic	22 (5.1%)
Others**	52 (12.0%)
<b>Tissue Biopsy Site (N, %)</b>	
Liver	63 (14.5%)
Brain	59 (13.6%)
Lung	54 (12.5%)
Gastrointestinal	51 (11.8%)
Lymph node	18 (4.2%)
Breast	13 (3.0%)
Gynecologic	13 (3.0%)
Others	162 (37.4%)
<b>Time between tissue biopsy and blood draw for ctDNA</b>	
Median months (interquartile range)	5.0 (0.03-241)
Category (N, %)	
≤2 months	165 (38.1%)
>2-6 months	69 (15.9%)
>6 months	199 (46.0%)

\*Includes colorectal cancer (N=54), appendiceal cancer (N=20), gastric cancer (N=8), esophageal cancer (N=7), gastrointestinal stromal tumor (N=7), anal cancer (N=3), small bowel cancer (N=3), and neuroendocrine tumor (N=2).

\*\*Includes genitourinary/prostate cancers (N=16), cancers of unknown primary (N=10), soft tissue sarcoma (N=8), hematologic malignancies (N=7), mesothelioma/peritoneal carcinoma (N=5), skin carcinoma (N=4), and thymoma (N=2).

**Table 2.** Overall concordance of *KRAS* alterations in all patients (N=433) and positive concordance in patients with *KRAS* alterations (N = 101), both stratified by time between blood draw and tissue biopsy ( $\leq 2$ , 2-6, and  $> 6$  months) and by tissue biopsy site (primary tumor versus metastatic sites).

<b>All Patients (N=433)</b>									
		<b>Tissue DNA results</b>			<b>Overall concordance rate</b>	<b>Kappa (SE)</b>	<b>Positive concordance rate*</b>		
		<i>Positive</i>	<i>Negative</i>						
<b>ctDNA results</b>	<i>Positive</i>	36	20		85.0%	0.44 (0.06)	35.6%		
	<i>Negative</i>	45	332						
<b>Temporal and Spatial Effects on Concordance</b>									
		<b>Test results (ctDNA / tissue DNA)</b>			<b>Overall concordance</b>			<b>Positive concordance*</b>	
		(+/+)	(+/- plus +)	(-/-)	Rate	Kappa (SE)	P-value	Rate	P-value
<b>Time interval between blood draw and tissue biopsy (months)</b>	<b><math>\leq 2</math> months (N=165)</b>	21	24	120	85.5%	0.55 (0.08)	0.67 ( $\leq 2$ vs. $>6$ ) 0.42 ( $\leq 6$ vs. $>6$ )	46.7%	0.02 ( $\leq 2$ vs. $>6$ months) 0.02 ( $\leq 6$ vs. $>6$ months)
	<b><math>&gt;2-6</math> months (N=69)</b>	6	8	55	88.4%	0.53 (0.15)		42.9%	
	<b><math>&gt;6</math> months (N=199)</b>	9	33	157	83.4%	0.26 (0.09)		21.4%	
<b>Tissue biopsy site</b>	<b>Primary (N = 228)</b>	13	31	184	86.4%	0.38 (0.09)	0.42	29.5%	0.30
	<b>Metastatic (N=205)</b>	23	34	148	83.4%	0.48 (0.08)		40.4%	

$$*Positive\ concordance\ rate = \frac{(positive \in both\ ctDNA \wedge tissue\ DNA)}{(positive \in either\ ctDNA \vee tissue\ DNA \vee \bar{i} \wedge both)}$$

**Table 3.** Factors associated with survival from date of diagnosis, date of blood draw for ctDNA test, and from date of metastatic/recurrent disease (N = 433 patients).

Variables	Univariate			Multivariate*	
	Median OS (months)	HR (95% CI)	P-value	HR (95% CI)	P-value
<b>OS from date of diagnosis</b>					
<b>Age</b> ≥60 years (N=199) vs. <60 years (N=234)	57.6 vs. 103.8	1.84 (1.40 - 2.43)	< 0.001	1.99 (1.50 - 2.64)	< 0.001
<b>Gender</b> Women (N=237) vs. Men (N=196)	78.1 vs. 68.0	0.95 (0.72 - 1.24)	0.69	-	-
<b>Type of cancer</b> GI or HPB (N=144) vs. Not (N=289)	53.2 vs. 88.8	1.65 (1.24 - 2.18)	< 0.001	1.47 (1.08 - 1.99)	0.01
<b>Time interval between tissue biopsy and blood draw</b> ≤6 months (N=234) vs. >6 months (N=199)	65.1 vs. 85.1	1.41 (1.08 - 1.84)	0.01	1.43 (1.09 - 1.88)	0.009
<b>KRAS alteration seen in ctDNA and/or tissue DNA</b> Yes (N=101) vs. No (N=332)	73.5 vs. 78.1	1.21 (0.89 - 1.66)	0.23	-	-
<b>KRAS alteration seen in both ctDNA and tissue DNA</b> Yes (N=36) vs. Not (N=397)	32.2 vs. 78.1	1.98 (1.26 - 3.12)	0.003	1.72 (1.04 - 2.86)	0.04
<b>OS from date of blood draw for ctDNA test</b>					
<b>Age</b> ≥60 years (N=199) vs. < 60 years (N=234)	13.7 vs. 21.8	1.34 (1.03 - 1.75)	0.03	1.37 (1.05 - 1.80)	0.02
<b>Gender</b> Women (N=237) vs. Men (N=196)	18.0 vs. 21.8	1.05 (0.81 - 1.38)	0.71	-	-
<b>Type of cancer</b> GI or HPB (N=144) vs. Not (N=289)	13.3 vs. 18.8	1.31 (0.99 - 1.72)	0.06	1.21 (0.90 - 1.62)	0.21
<b>Time interval between tissue biopsy and blood draw</b>	17.2 vs. 18.8	1.07 (0.81 -	0.65	-	-

≤6 months (N=234) vs. >6 months (N=199)		1.39)			
<b>KRAS alteration seen in ctDNA and/or tissue DNA</b> Yes (N=101) vs. No (N=332)	15.0 vs. 18.2	1.19 (0.87 - 1.63)	0.27	-	-
<b>KRAS alteration seen in both ctDNA and tissue DNA</b> Yes (N=36) vs. Not (N=397)	9.0 vs. 18.8	1.61 (1.03 - 2.53)	<b>0.04</b>	1.52 (0.94 - 2.46)	0.09
<b>OS from date of metastatic or recurrent disease**</b>					
<b>Age</b> ≥60 years (N=185) vs. <60 years (N=220)	30.0 vs. 44.2	1.54 (1.18 - 2.02)	<b>0.001</b>	1.66 (1.26 - 2.18)	< <b>0.001</b>
<b>Gender</b> Women (N=222) vs. Men (N=183)	42.1 vs. 35.1	0.82 (0.63 - 1.08)	0.16	-	-
<b>Type of cancer</b> GI or HPB (N=137) vs. Not (N=268)	32.2 vs. 43.6	1.56 (1.18 - 2.06)	<b>0.002</b>	1.45 (1.07 - 1.96)	<b>0.02</b>
<b>Time interval between tissue biopsy and blood draw</b> ≤6 months (N=221) vs. >6 months (N=184)	34.9 vs. 43.4	1.46 (1.12 - 1.92)	<b>0.006</b>	1.48 (1.13 - 1.94)	<b>0.005</b>
<b>KRAS alteration seen in ctDNA and/or tissue DNA</b> Yes (N=97) vs. No (N=308)	35.5 vs. 40.7	1.19 (0.86 - 1.62)	0.29	-	-
<b>KRAS alteration seen in both ctDNA and tissue DNA</b> Yes (N=36) vs. Not (N=369)	25.9 vs. 41.7	1.98 (1.26 - 3.13)	<b>0.003</b>	1.70 (1.03 - 2.81)	<b>0.04</b>

\*P-values <0.15 in univariate were selected for multivariate analysis.

\*\*A total of 28 patients were excluded from the latter analysis because their disease was surgically resected.

**Abbreviations:** CI, confidence interval; GI, gastrointestinal; HPB, hepatic/pancreatic/biliary; HR, hazard ratio; NGS, next-generation sequencing; OS, overall survival.

### SUPPLEMENTRY FILES

**Supplemental Table 1.** Concordance between tissue DNA and ctDNA for *KRAS* amplification for patients with ≤2 months, >2-6 months, and >6 months between a tissue biopsy and blood-derived ctDNA.

<b>KRAS Amplification</b>		<b>(+/ +)</b>	<b>(-/- )</b>	<b>Overall concordance</b>	<b>Kappa (SE)</b>	<b>P-value</b>
<b>All patients (N=433)</b>		2	407	94.5%	0.12 (0.09)	
<b>Time interval between blood draw and tissue biopsy (months)</b>	<b>≤2 (N=165)</b>	1	157	95.8%	0.20 (0.19)	0.37 (≤2 vs. >6) 0.53 (≤6 vs. >6)
	<b>&gt;2-6 (N=69)</b>	1	64	94.2%	0.31 (0.25)	
	<b>&gt;6 (N=199)</b>	0	186	93.5%	0.01 (0.01)	



**Supplemental Table 2.** Concordance between tissue DNA and ctDNA for *KRAS G12D*, *G12V*, *G12C*, *G12R* and *G13D* alterations for patients  $\leq 2$  months, 2-6 months, and  $> 6$  months between a tissue biopsy and blood-derived ctDNA.\*

<b>KRAS G12D</b>		(+/ +)	(-/ -)	<b>Overall Concordance</b>	<b>Kappa (SE)</b>	<b>P-value</b>
<b>All patients (N=433)</b>		4	41 4	96.5%	0.34 (0.13)	
<b>Time interval between tissue biopsy and blood draw (months)</b>	$\leq 2$ (N=165)	3	15 4	95.2%	0.41 (0.16)	0.27 ( $\leq 2$ vs. $> 6$ months) 0.43 ( $\leq 6$ vs. $> 6$ months)
	$> 2-6$ (N=69)	0	67	97.1%	-	
	$> 6$ (N=199)	1	19 3	97.5%	0.28 (0.22)	
<b>KRAS G12V</b>		(+/ +)	(-/ -)	<b>Overall Concordance</b>	<b>Kappa (SE)</b>	<b>P-value</b>
<b>All patients (N=433)</b>		9	41 8	98.6%	0.74 (0.10)	
<b>Time interval between tissue biopsy and blood draw (months)</b>	$\leq 2$ (N=165)	2	15 8	97.0%	0.43 (0.21)	0.10 ( $\leq 2$ vs. $> 6$ months) 0.23 ( $\leq 6$ vs. $> 6$ months)
	$> 2-6$ (N=69)	2	67	100%	1.00 (0.00)	
	$> 6$ (N=199)	5	19 3	99.5%	0.91 (0.09)	
<b>KRAS G12C</b>		(+/ +)	(-/ -)	<b>Overall Concordance</b>	<b>Kappa (SE)</b>	<b>P-value</b>
<b>All patients (N=433)</b>		3	42 2	98.2%	0.42 (0.17)	
<b>Time interval between tissue biopsy and blood draw (months)</b>	$\leq 2$ (N=165)	3	16 0	98.8%	0.74 (0.17)	0.46 ( $\leq 2$ vs. $> 6$ months) 0.48 ( $\leq 6$ vs. $> 6$ months)
	$> 2-6$ (N=69)	0	68	98.6%	-	
	$> 6$ (N=199)	0	19 4	97.5%	0.01 (0.01)	
<b>KRAS G12R</b>		(+/ +)	(-/ -)	<b>Overall Concordance</b>	<b>Kappa (SE)</b>	<b>P-value</b>
<b>All patients (N=433)</b>		3	42 3	98.4%	0.46 (0.17)	

<b>Time interval between tissue biopsy and blood draw (months)</b>	<b>≤2 (N=165)</b>	3	16 0	98.8%	0.74 (0.17)	0.69 (≤2 vs. >6 months) 0.71 (≤6 vs. >6 months)
	<b>&gt;2-6 (N=69)</b>	0	68	98.6%	-	
	<b>&gt;6 (N=199)</b>	0	19 5	98.0%	-	
<b>KRAS G13D</b>		(+/ +)	(-/- )	<b>Overall Concordance</b>	<b>Kappa (SE)</b>	<b>P-value</b>
<b>All patients (N=433)</b>		6	42 3	99.1%	0.75 (0.12)	
<b>Time interval between tissue biopsy and blood draw (months)</b>	<b>≤2 (N=165)</b>	3	16 1	99.4%	0.85 (0.14)	0.63 (≤2 vs. >6 months) 0.34 (≤6 vs. >6 months)
	<b>&gt;2-6 (N=69)</b>	2	67	100%	1.00 (0.00)	
	<b>&gt;6 (N=199)</b>	1	19 5	98.5%	0.39 (0.28)	

**Supplemental Table 3.** Concordance for *KRAS* alterations in tissue versus ctDNA by type of cancer.

	Test results (ctDNA / tissue DNA)			Overall concordance			Positive concordance	
	(+/+)	(+/- plus -/+)	(-/-)	Rate	Kappa (SE)	<i>P</i> -value	Rate	<i>P</i> -value
<b>Colorectal cancer patients (N=54)</b>	16	12	26	77.8%	0.55 (0.11)	0.15	57.1 %	0.01
<b>Non-colorectal cancer patients (N=379)</b>	20	53	306	86.0%	0.35 (0.07)		27.4 %	

**Supplemental Table 4.** Concordance between tissue and blood *KRAS* alterations based on %ctDNA (dichotomized at median %ctDNA for *KRAS* alterations).\*

		Tissue DNA results		Overall concordance	Positive concordance	Kappa (SE)	P-value
		Positive	Negative				
<b>&lt;1.55% ctDNA (N=19)</b>							
<b>ctDNA results</b>	Positive	16	3	84.2%	84.2%	-	0.66
	Negative	0	0				
<b>≥1.55% ctDNA (N=20)</b>							
<b>ctDNA results</b>	Positive	18	2	90.0%	90.0%	-	
	Negative	0	0				

\*Among 56 patients with *KRAS* alterations in ctDNA, 39 patients were available for %ctDNA (17 patients had only *KRAS* amplifications and %ctDNA was not evaluated for amplifications). In these 39 patients, the median %ctDNA of *KRAS* alterations was 1.55% (range, 0.1% - 32.7%); the *Kappa* values could not be calculated due to 'ctDNA negative = 0'. Note that concordance may be biased in this analysis because, by definition, in this analysis, all patients had *KRAS* alterations in ctDNA.

**Supplemental Table 5.** Accuracy of ctDNA for tissue DNA results\*

Parameters	Generator	All patients (N=433)	Stratified by time interval		P-value
			≤2 months (N=165)	>6 months (N=199)	
<i>Sensitivity</i>	$A / (A + B)$	44.4%	51.2%	31.0%	0.14
<i>Positive predictive value</i>	$A / (A + C)$	64.3%	84.0%	40.9%	<b>0.003</b>
<i>Specificity</i>	$D / (C + D)$	94.3%	96.8%	92.4%	0.13
<i>Negative predictive value</i>	$D / (B + D)$	88.1%	85.7%	88.7%	0.50

\*The table below was used to generate the numbers in Supplemental Tables 5 and 6

		Tissue	
		Positive	Negative
ctDNA	Positive	A	C
	Negative	B	D

**Supplemental Table 6.** Accuracy of tissue DNA for ctDNA results\*

Parameters	Generator	All patients (N=433)	Stratified by time interval		P-value
			≤2 months (N=165)	>6 months (N=199)	
<i>Sensitivity</i>	$A / (A + C)$	64.3%	84.0%	40.9%	<b>0.003</b>
<i>Positive predictive value</i>	$A / (A + B)$	44.4%	51.2%	31.0%	0.14
<i>Specificity</i>	$D / (B + D)$	88.1%	85.7%	88.7%	0.50
<i>Negative predictive value</i>	$D / (C + D)$	94.3%	96.8%	92.4%	0.13

\*The table below was used to generate the numbers in Supplemental Tables 5 and 6

		Tissue	
		Positive	Negative
ctDNA	Positive	A	C
	Negative	B	D

**Supplemental Table 7.** Investigation of factors associated with overall survival from date of diagnosis, from date of blood draw for ctDNA test, and from date of metastatic or recurrent disease among 101 patients with *KRAS* alterations in either ctDNA or tissue DNA.

Variables	Univariate			Multivariate*	
	Median OS (months)	HR (95% CI)	P-value	HR (95% CI)	P-value
<b>OS from date of diagnosis</b>					
<b>Age</b> ≥60 years (N=46) vs. <60 years (N=55)	59.3 vs. 78.5	1.46 (0.84 - 2.56)	0.18	-	-
<b>Gender</b> Women (N=48) vs. Men (N=53)	78.5 vs.60.6	0.86 (0.49 - 1.50)	0.58	-	-
<b>Type of cancer</b> GI or HPB (N=64) vs. Not (N=37)	59.3 vs. 81.8	1.58 (0.86 - 2.90)	0.14	1.17 (0.58 - 2.38)	0.66
<b>Time interval between tissue biopsy and blood draw</b> ≤6 months (N=59) vs. >6 months (N=42)	53.2 vs. 73.5	1.16 (0.66 - 2.03)	0.61	-	-
<b>KRAS concordance between both ctDNA and tissue DNA</b> Concordant (N=36) vs. Discordant (N=65)	32.2 vs.77.2	1.96 (1.11 - 3.45)	<b>0.02</b>	1.81 (0.93 - 3.50)	0.08
<b>OS from date of blood draw for ctDNA test</b>					
<b>Age</b> ≥60 years (N=46) vs. <60 years (N=55)	10.0 vs. 19.5	1.42 (0.81 - 2.47)	0.22	-	-
<b>Gender</b> Women (N=48) vs. Men (N=53)	18.0 vs.14.6	0.93 (0.54 - 1.62)	0.81	-	-
<b>Type of cancer</b> GI or HPB (N=64) vs. Not (N=37)	19.5 vs. 9.2	0.77 (0.42 - 1.39)	0.38	-	-
<b>Time interval between tissue biopsy and blood draw</b> ≤6 months (N=59) vs. >6 months (N=42)	20.5 vs.10.0	0.77 (0.44 - 1.35)	0.36	-	-
<b>KRAS concordance between both ctDNA and</b>				-	-

<b>tissue DNA</b> Concordant (N=36) vs. Discordant (N=65)	9.0 vs.24.2	1.53 (0.88 - 2.68)	0.13		
<b>OS from date of metastatic or recurrent disease**</b>					
<b>Age</b> ≥60 years (N=45) vs. <60 years (N=52)	23.1 vs.40.5	1.52 (0.87 - 2.65)	0.14	1.93 (1.08 - 3.45)	<b>0.03</b>
<b>Gender</b> Women (N=47) vs. Men (N=50)	34.4 vs. 39.5	0.96 (0.55 - 1.66)	0.87	-	-
<b>Type of cancer</b> GI or HPB (N=61) vs. Not (N=36)	34.4 vs. 41.7	1.24 (0.69 - 2.24)	0.46	-	-
<b>Time interval between tissue biopsy and blood draw</b> ≤6 months (N=56) vs. >6 months (N=41)	26.9 vs. 41.7	1.60 (0.90 - 2.82)	0.11	1.49 (0.83 - 2.66)	0.18
<b>KRAS concordance between both ctDNA and tissue DNA</b> Concordant (N=36) vs. Discordant (N=61)	25.9 vs. 41.7	2.05 (1.14 - 3.68)	<b>0.02</b>	2.30 (1.23 - 4.30)	<b>0.009</b>

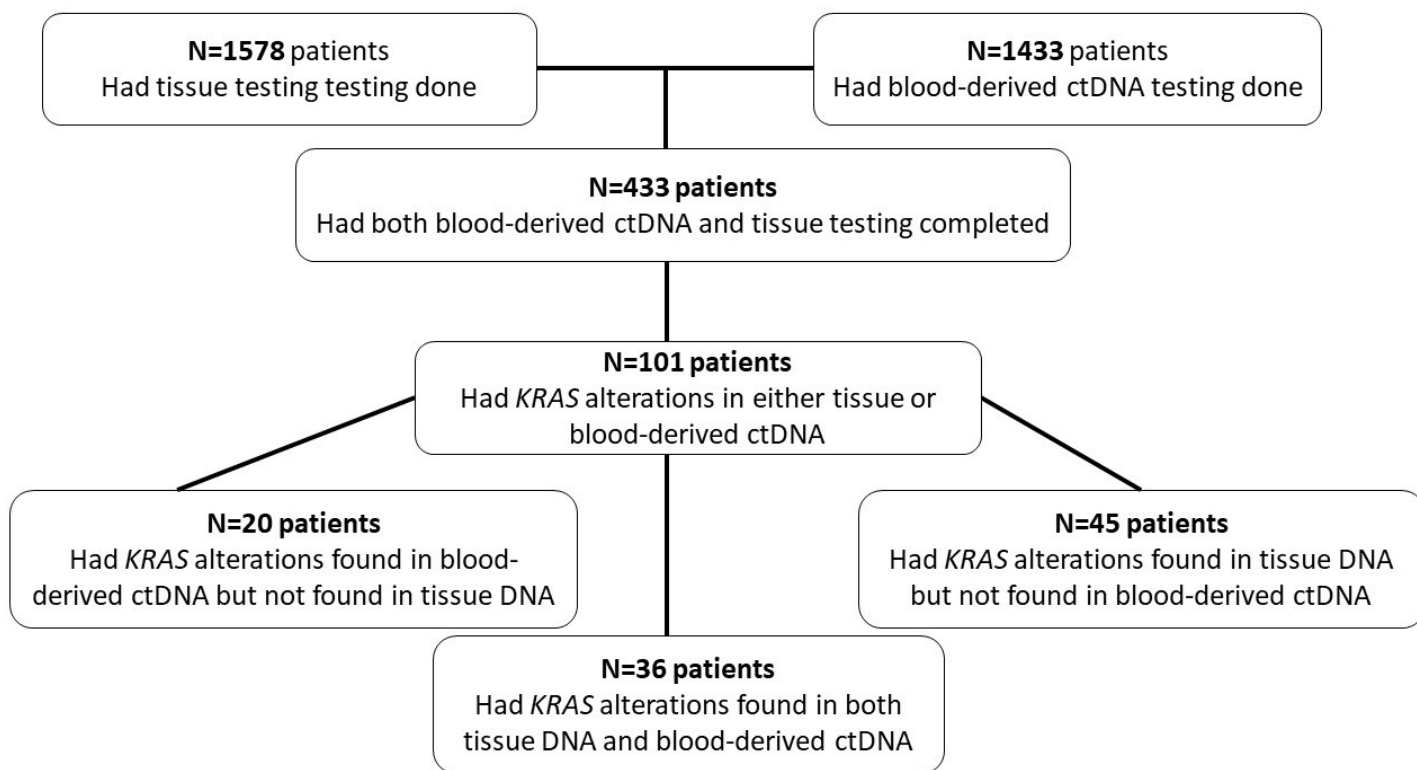
\*P values <0.15 in univariate were selected for multivariate analysis.

\*\*a total of four patients were excluded from this analysis because their disease was surgically resected.

**Abbreviations:** CI, confidence interval; GI, gastrointestinal; HPB, hepato-pancreato-biliary; HR, hazard ratio; NGS, next-generation sequencing; OS, overall survival.



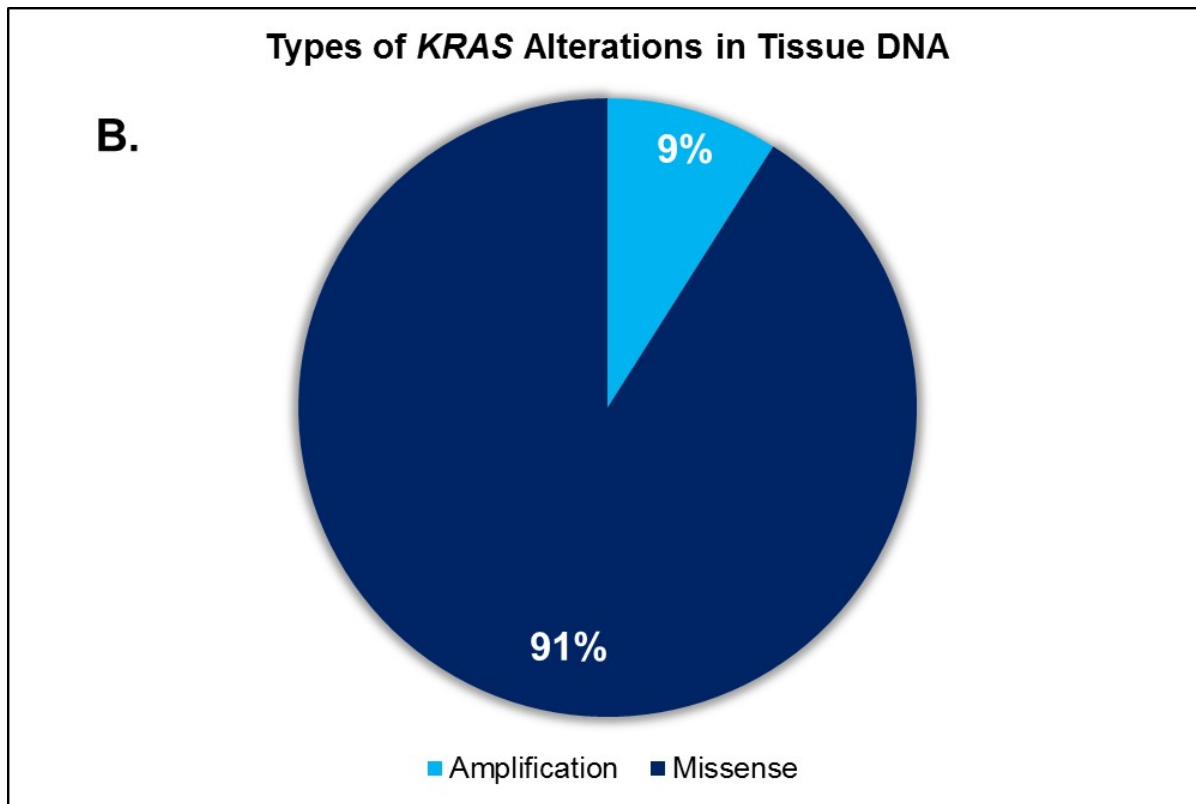
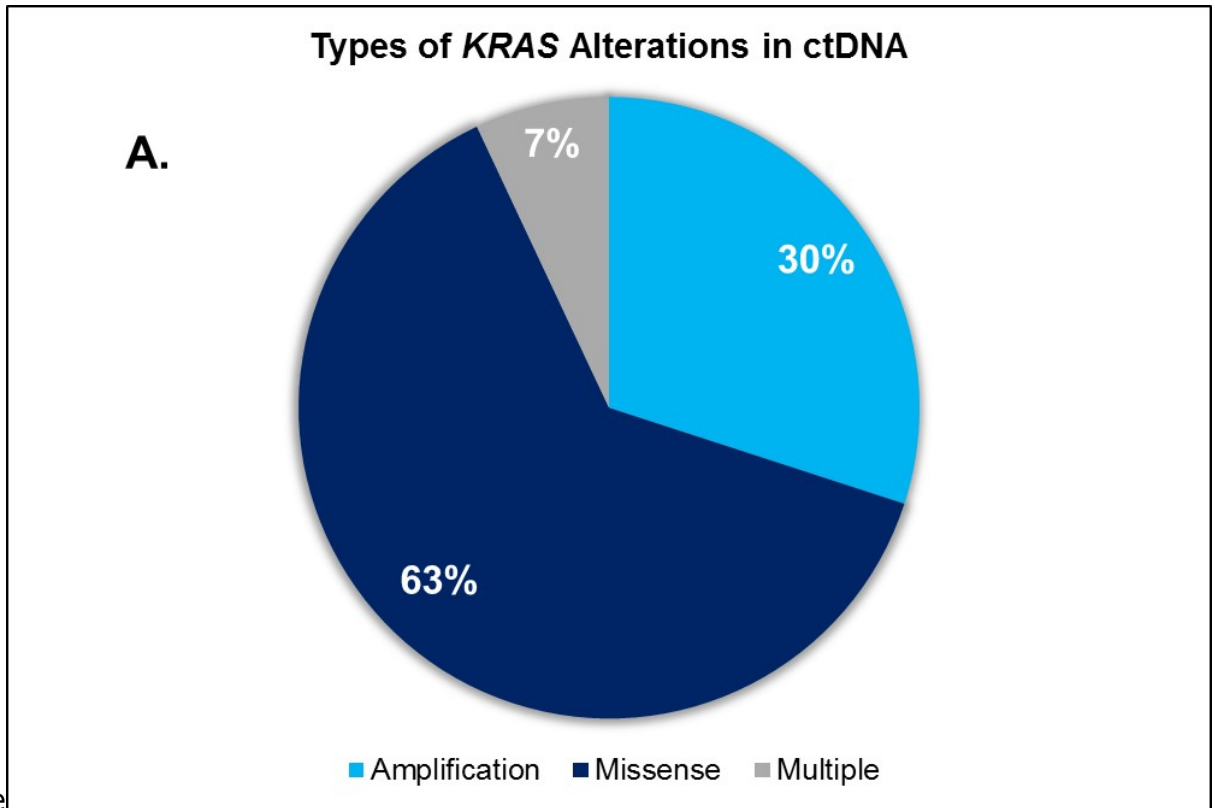
**Supplemental Figure 1.** Consort flow diagram that shows the detection of the *KRAS* alteration in both tissue and ctDNA tests among patients with diverse cancers at the UC San Diego Moores Cancer Center.



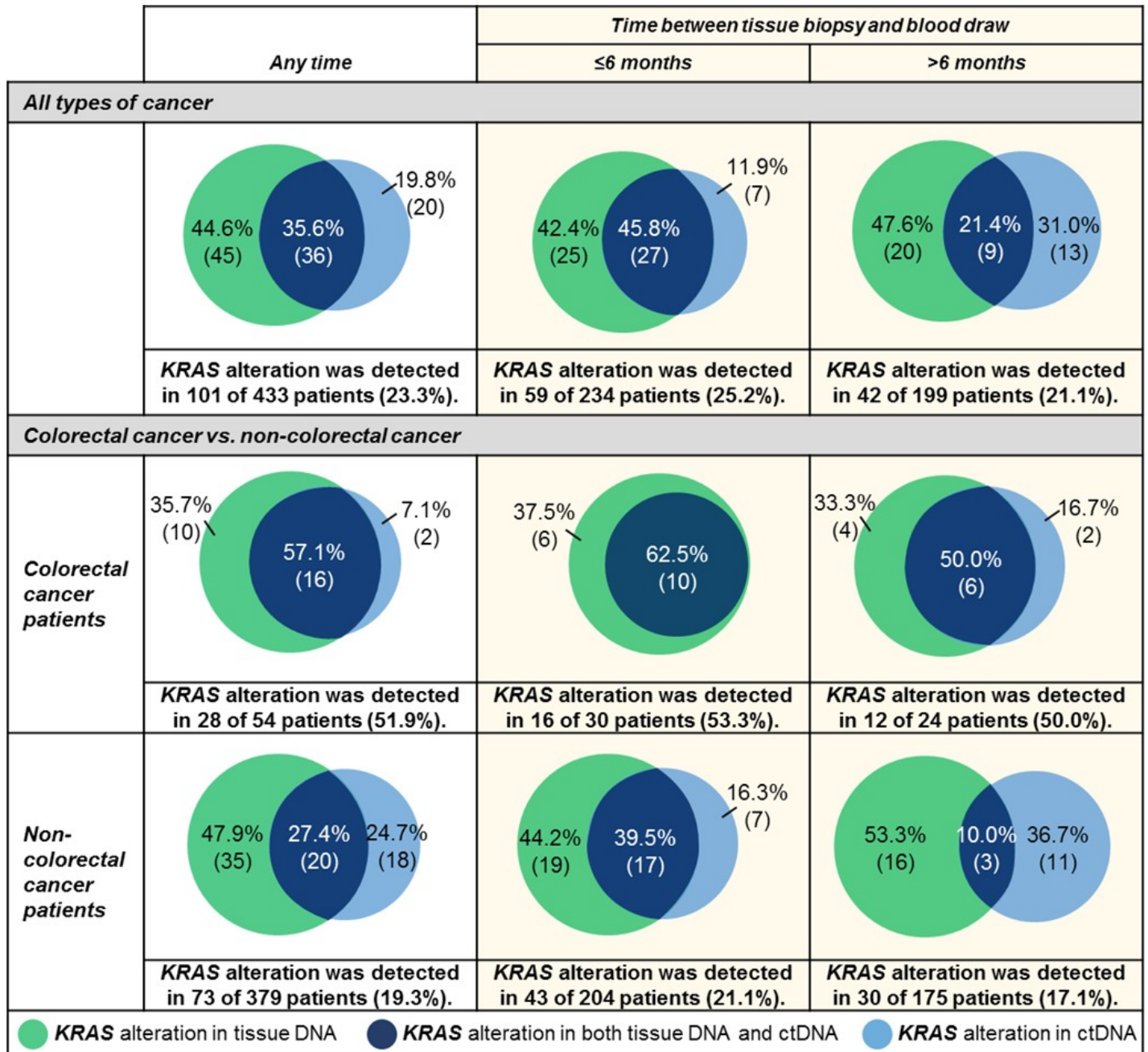
**Supplemental Figure 2.** Types of *KRAS* alteration. VUS alterations were excluded. If two different samples were collected for a patient, only the tissue and blood samples closest together timewise were counted.

**Panel 2A.** In ctDNA (N=56).

**Panel 2B.** In tissue DNA (N=81). Multiple alterations refers to both amplification and missense



**Supplemental Figure 3:** KRAS alterations among 433 patients, categorized by colorectal cancer and non-colorectal cancers for patients with  $\leq 6$  months and  $>6$  months between blood draw and tissue biopsy. If two different samples were collected for a patient, only the tissue and blood samples closest together timewise were counted. Numbers in parentheses represent number of patients.



**Supplemental Figure 4.** Survival analysis between patients with concordant *KRAS* alterations (N = 27), those with discordant *KRAS* alterations (N = 32), and those with no *KRAS* alterations (N = 175) among 234 patients with  $\leq 6$  months between blood draw and tissue sample.

**Panel 4A.** Overall survival from date of diagnosis;

**Panel 4B.** Overall survival from date of blood draw for ctDNA test;

**Panel 4C.** Overall survival from date of metastatic or recurrent disease. \*Thirteen patients were excluded from this analysis because their disease were surgically resected.

