

UC Irvine

UC Irvine Previously Published Works

Title

Growing scalp mass in an untreated man.

Permalink

<https://escholarship.org/uc/item/1j6920tx>

Journal

JAAD case reports, 6(9)

ISSN

2352-5126

Authors

Sharma, Ajay N
Dobry, Allison S
Doan, Linda
et al.

Publication Date

2020-09-01

DOI

10.1016/j.jdc.2020.05.038

Copyright Information

This work is made available under the terms of a Creative Commons Attribution License, available at <https://creativecommons.org/licenses/by/4.0/>

Peer reviewed

Growing scalp mass in an untreated man



Ajay N. Sharma, BS, Allison S. Dobry, MD, Linda Doan, MD, PhD, and Nathan W. Rojek, MD
Irvine, California



Figure by Ajay N. Sharma BS, Allison S. Dobry MD, Linda Doan MD, PhD, Nathan W. Rojek MD II

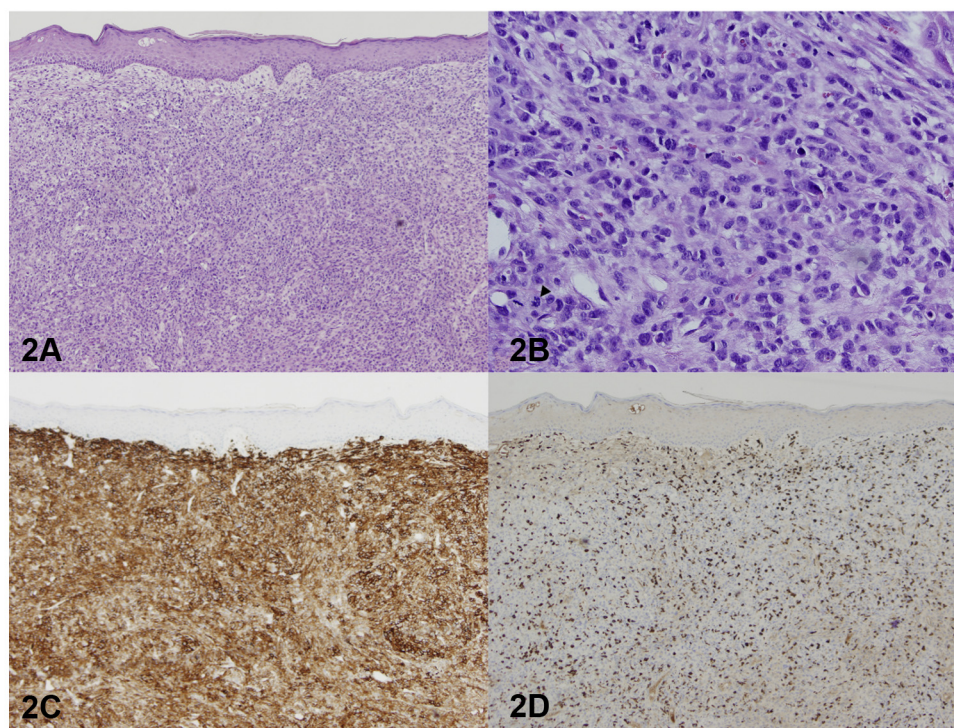


Figure by Ajay N. Sharma BS, Allison S. Dobry MD, Linda Doan MD, PhD, Nathan W. Rojek MD

From the Department of Dermatology, University of California, Irvine.

Funding sources: The authors have no funding sources to declare. Disclosures: The authors have no conflicts of interest to declare. IRB approval status: Not applicable.

Correspondence to: Nathan W. Rojek, MD, Assistant Professor, Department of Dermatology, 118 Medical Surge I, Irvine, CA 92697. E-mail: nrojek@uci.edu.

JAAD Case Reports 2020;6:956-7.
2352-5126

© 2020 by the American Academy of Dermatology, Inc. Published by Elsevier, Inc. This is an open access article under the CC BY-NC-ND license (<http://creativecommons.org/licenses/by-nc-nd/4.0/>).

<https://doi.org/10.1016/j.jdc.2020.05.038>

A 55-year-old Caucasian man presented with a painful scalp mass that had been growing untreated for the past 10 years. The mass was an 8.0 cm × 7.5 cm × 1.5 cm eroded tumor with a pearly, rolled border on the frontal scalp with scattered hemorrhagic crusting (Fig 1). Exam revealed a 1-cm palpable right preauricular lymph node, and CT scan demonstrated a large heterogeneous soft tissue mass with bony invasion of the calvarium. Biopsies of the mass revealed a densely cellular intradermal proliferation of atypical spindled and pleomorphic cells with numerous atypical mitotic figures (Fig 2).

What is the most likely diagnosis?

- A. Basal Cell Carcinoma
- B. Atypical Fibroxanthoma
- C. Pleomorphic Dermal Sarcoma
- D. Squamous Cell Carcinoma
- E. Leiomyosarcoma

Click [here](#) to view disclosures, take the quiz, and claim CME credit.