

# Lawrence Berkeley National Laboratory

## Recent Work

### Title

PROJECT WHITNEY ADMINISTRATIVE PROGRESS REPORT - FOR THE PERIOD ENDING DEC. 1953

### Permalink

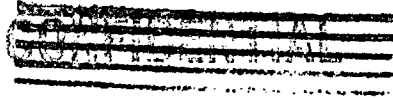
<https://escholarship.org/uc/item/1m82j2z4>

### Author

Lawrence Berkeley National Laboratory

### Publication Date

1954



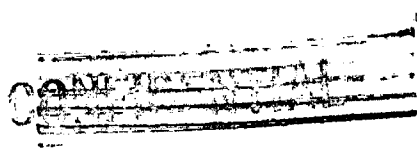
UNIVERSITY OF  
CALIFORNIA

*Radiation  
Laboratory*

TWO-WEEK LOAN COPY

*This is a Library Circulating Copy  
which may be borrowed for two weeks.  
For a personal retention copy, call  
Tech. Info. Division, Ext. 5545*

BERKELEY, CALIFORNIA



UCRL-2463  
e.2

## **DISCLAIMER**

This document was prepared as an account of work sponsored by the United States Government. While this document is believed to contain correct information, neither the United States Government nor any agency thereof, nor the Regents of the University of California, nor any of their employees, makes any warranty, express or implied, or assumes any legal responsibility for the accuracy, completeness, or usefulness of any information, apparatus, product, or process disclosed, or represents that its use would not infringe privately owned rights. Reference herein to any specific commercial product, process, or service by its trade name, trademark, manufacturer, or otherwise, does not necessarily constitute or imply its endorsement, recommendation, or favoring by the United States Government or any agency thereof, or the Regents of the University of California. The views and opinions of authors expressed herein do not necessarily state or reflect those of the United States Government or any agency thereof or the Regents of the University of California.



~~CONFIDENTIAL~~

UCRL-2463

UNIVERSITY OF CALIFORNIA

Radiation Laboratory

Contract No. W-7405-eng-48

Classification changed to ~~CONFIDENTIAL~~ **UNCLASSIFIED**  
 by authority of CG-UF-2 CG-URD-3 RUC  
 James T. Davis  
 SAN Classification Officer

PROJECT WHITNEY ADMINISTRATIVE PROGRESS REPORT

For the Period Ending December 31, 1953

Special Review of Declassified Reports January 18, 1954

Authorized by USDOE JK Bratton

Unclassified TWX P182206Z May 79

REPORT PROPERLY DECLASSIFIED

SPECIAL REREVIEW  
 FINAL DETERMINATION  
**UNCLASSIFIED**  
 NAME: LI BAKKEN  
 DATE: 3/28/80

J. GREEN 3/28/80  
 Authorized Derivative Classifier Date  
J. J. [Signature] 4/4/80  
 By Date

This material contains information affecting the National Defense of the United States within the meaning of the espionage laws, Title 18, U. S. C., Secs. 793 and 794, the transmission or revelation of which in any manner to an unauthorized person is prohibited by law.

Berkeley, California

~~CONFIDENTIAL~~

~~CONFIDENTIAL~~

UNIVERSITY OF CALIFORNIA RADIATION LABORATORY  
PROJECT WHITNEY ADMINISTRATIVE PROGRESS REPORT

For the Period Ending December 31, 1953

January 18, 1954

INTRODUCTION

Operations

The completion of almost all aspects of the stateside Castle program along with the holiday season combined to make the PW direct labor cost drop in December to the lowest level in six months. These costs will climb sharply in the months to come as more and more UCRL personnel are placed on an extended work-week while assigned to PPG.

A recruiting drive is being initiated now to obtain technical personnel for Livermore in order to build up the staff to the levels authorized by the F. Y. 1954 and the F. Y. 1955 budgets. This is planned as a smooth buildup of forces taking place in the six month period starting in March or April.

By now most of materials and services purchased by UCRL for the forthcoming test program have been received. However, PW costs to date do not reflect this fact because of the delay experienced by the Laboratory in receiving invoices from the suppliers or cost transfers from the AEC. There are roughly \$1,500,000 in outstanding commitments for the major procurement orders in this category.

Plant and Equipment

Preliminary discussions are underway with the Austin Company's architects regarding the layout and facilities required in the Design and Diagnostic Development Building.

Construction is being pushed on the Computer Building for the IBM-701 A. Unless the weather becomes impossible, there seems to be no question that the building will be ready and waiting for the machine.

Field trips are being made by the joint UCRL-AEC Site 300 Selection Committee to investigate properties found to be available by the Corps of Engineers real estate representative.

~~CONFIDENTIAL~~

## COST INFORMATION

Summary				
<u>Operations</u>	Labor	Material	Indirect	Total
December	268, 181	386, 005	351, 492	1, 005, 679
FY-1954 Cuml. to December 31	1, 827, 184	2, 410, 316	2, 263, 627	6, 501, 127
<u>Plant</u>	UCRL Labor	Material and Out- Side Con- tracts	Total	Outstanding Commitments
December	25, 012	140, 728	165, 730	117, 799
FY-1954 Cuml. to December 31	93, 320	1, 025, 605	1, 118, 925	
FY-1953 Total	132, 699	2, 286, 574	2, 419, 273	
Total cost to date	226, 019	3, 312, 179	3, 538, 198	117, 799

PROJECT WHITNEY PERSONNEL REPORT 12/31/53

Department	Berkeley			Livermore			UCRL	CR&D	Total
	Oper	P and E	Total	Oper.	P and E	Total	Total		
<b>ADMINISTRATIVE AND SERVICE</b>									
Director's Office	-	-	--	2	-	2	2	-	2
Business Office	5	-	5	14	-	14	19	-	19
Reproducing Office	-	-	--	5	-	5	5	-	5
Controller's Office	5	-	5	1	-	1	6	-	6
Personnel Office	8	-	8	4	-	4	12	-	12
Patent Office	-	-	-	-	-	-	-	-	-
Information	3	-	3	15	-	15	18	-	18
Purchasing	15	-	15	4	-	4	19	-	19
Inventory	2	-	2	9	-	9	11	-	11
Stores	20	-	20	27	-	27	47	-	47
Transportation-Materials	3	-	3	6	-	6	9	-	9
Radiation Protection	1	-	1	3	-	3	4	-	4
Security	2	-	2	8	-	8	10	51	61
Transportation-Personnel	-	-	-	3	-	3	3	-	3
Custodians	-	-	-	-	-	-	-	12	12
Facilities	-	-	-	19	-	19	19	-	19
Nurses	-	-	-	4	-	4	4	-	4
<b>Total</b>	<b>64</b>	<b>-</b>	<b>64</b>	<b>124</b>	<b>-</b>	<b>124</b>	<b>140</b>	<b>63</b>	<b>251</b>
<b>ENGINEERING AND SHOPS</b>									
Plant Engineering	-	5	5	6	6	12	17	-	17
Laborers	-	-	-	-	-	-	-	11	11
Maint. Machinists	-	-	-	23	-	23	23	-	23
Constr. Crafts	2	2	4	-	-	-	4	31	35
Elec. Engr.	5	6	11	56	1	57	68	-	68
Electronic Shops	9	2	11	72	2	74	85	-	85
Mechanical Engineering	2	10	12	53	2	55	67	-	67
Mechanical Shops	31	16	47	41	4	45	92	-	92
Mechanical Equipment	6	2	8	95	2	97	105	-	105
Health Chem. Engr.	10	-	10	9	-	9	19	-	19
<b>Total</b>	<b>65</b>	<b>43</b>	<b>108</b>	<b>355</b>	<b>17</b>	<b>372</b>	<b>480</b>	<b>42</b>	<b>522</b>
<b>RESEARCH</b>									
<b>Total</b>	<b>14</b>	<b>-</b>	<b>14</b>	<b>273</b>	<b>-</b>	<b>273</b>	<b>287</b>	<b>-</b>	<b>287</b>
<b>GRAND TOTAL</b>	<b>143</b>	<b>43</b>	<b>186</b>	<b>752</b>	<b>17</b>	<b>769</b>	<b>955</b>	<b>105</b>	<b>1,060</b>



PW EMPLOYEES - BY LOCATION OF EFFORT

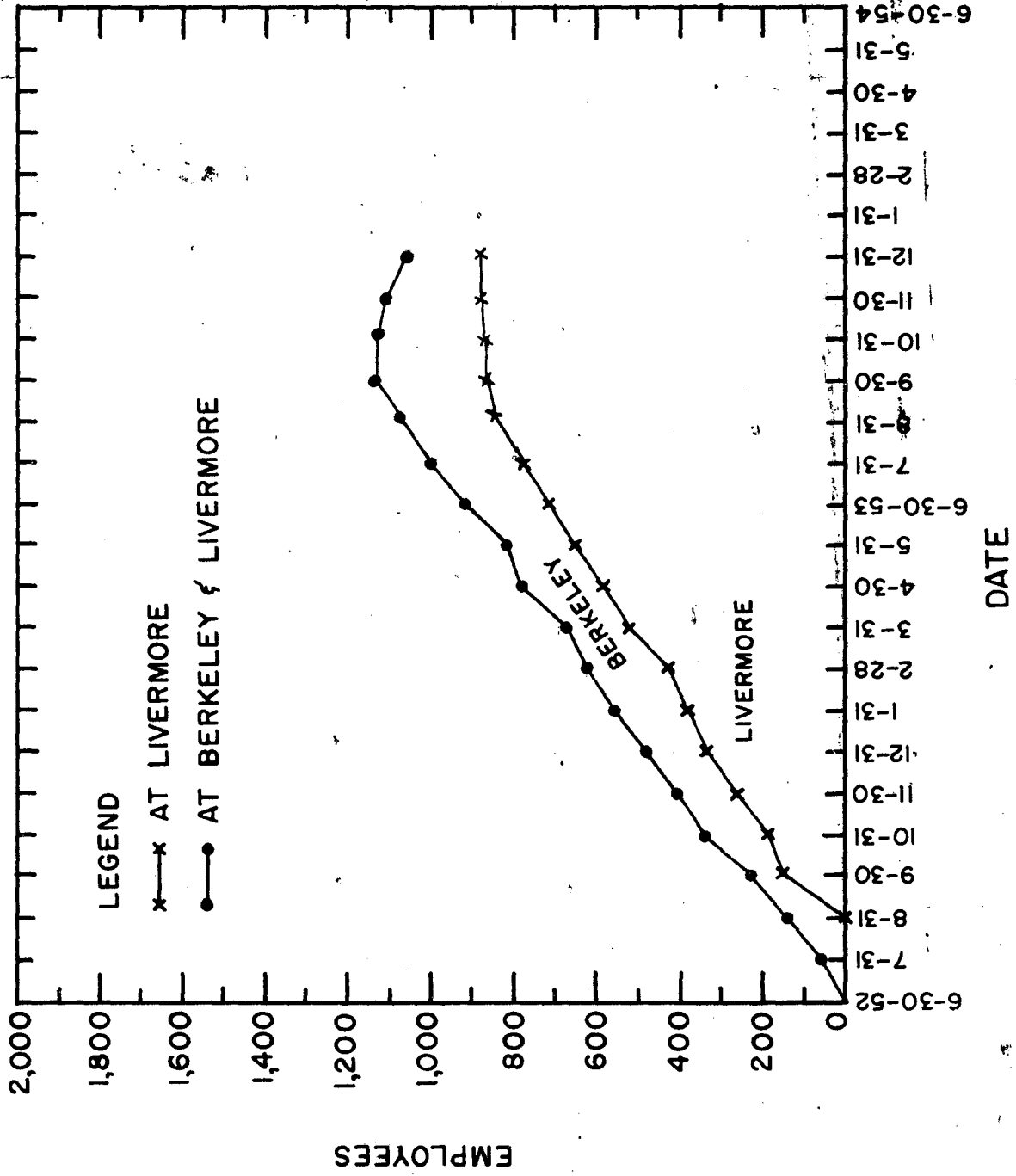


FIG. 1

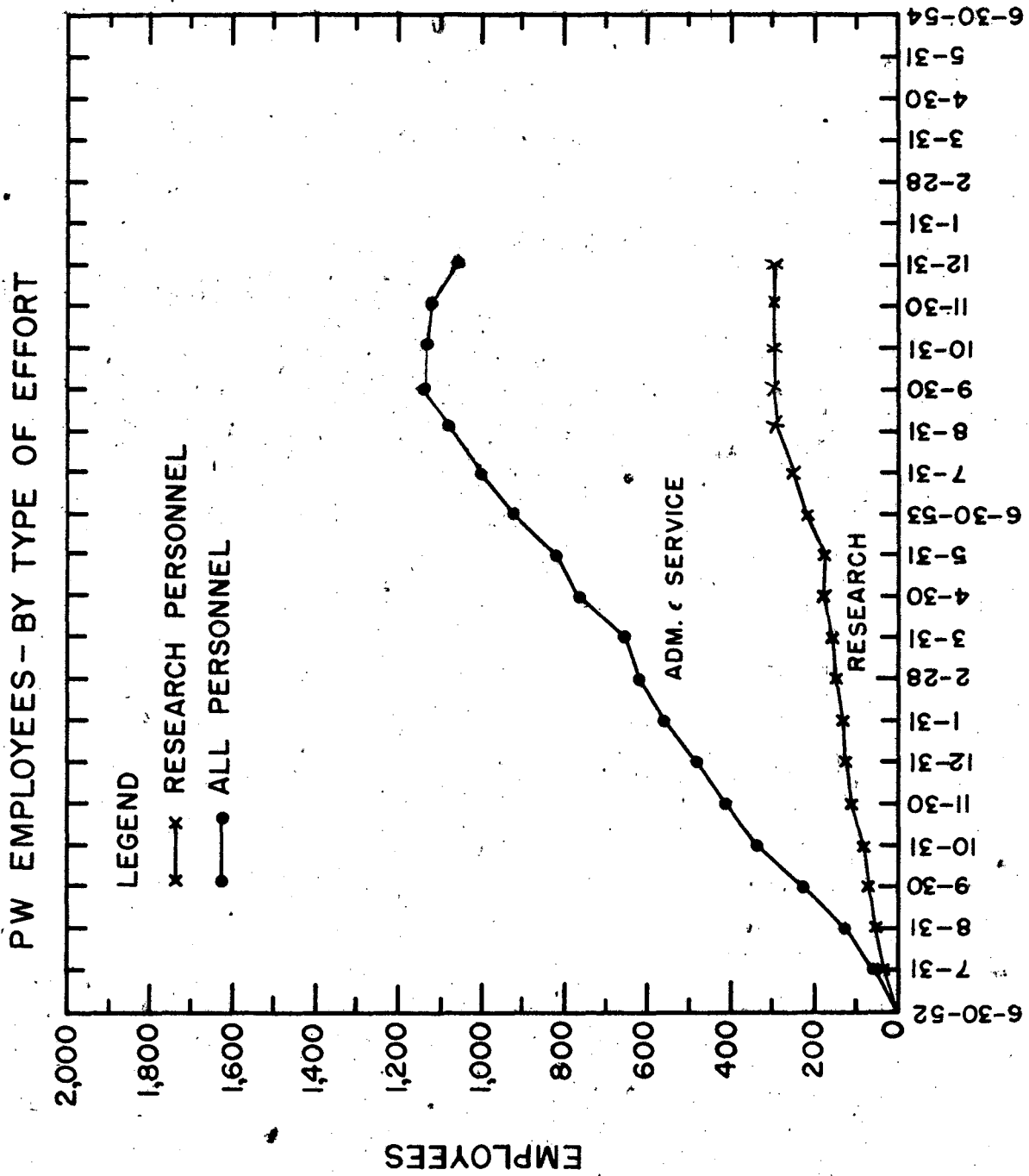


FIG. 2

CUMULATIVE OPERATING COSTS  
PROGRAM 3000 FY 1954

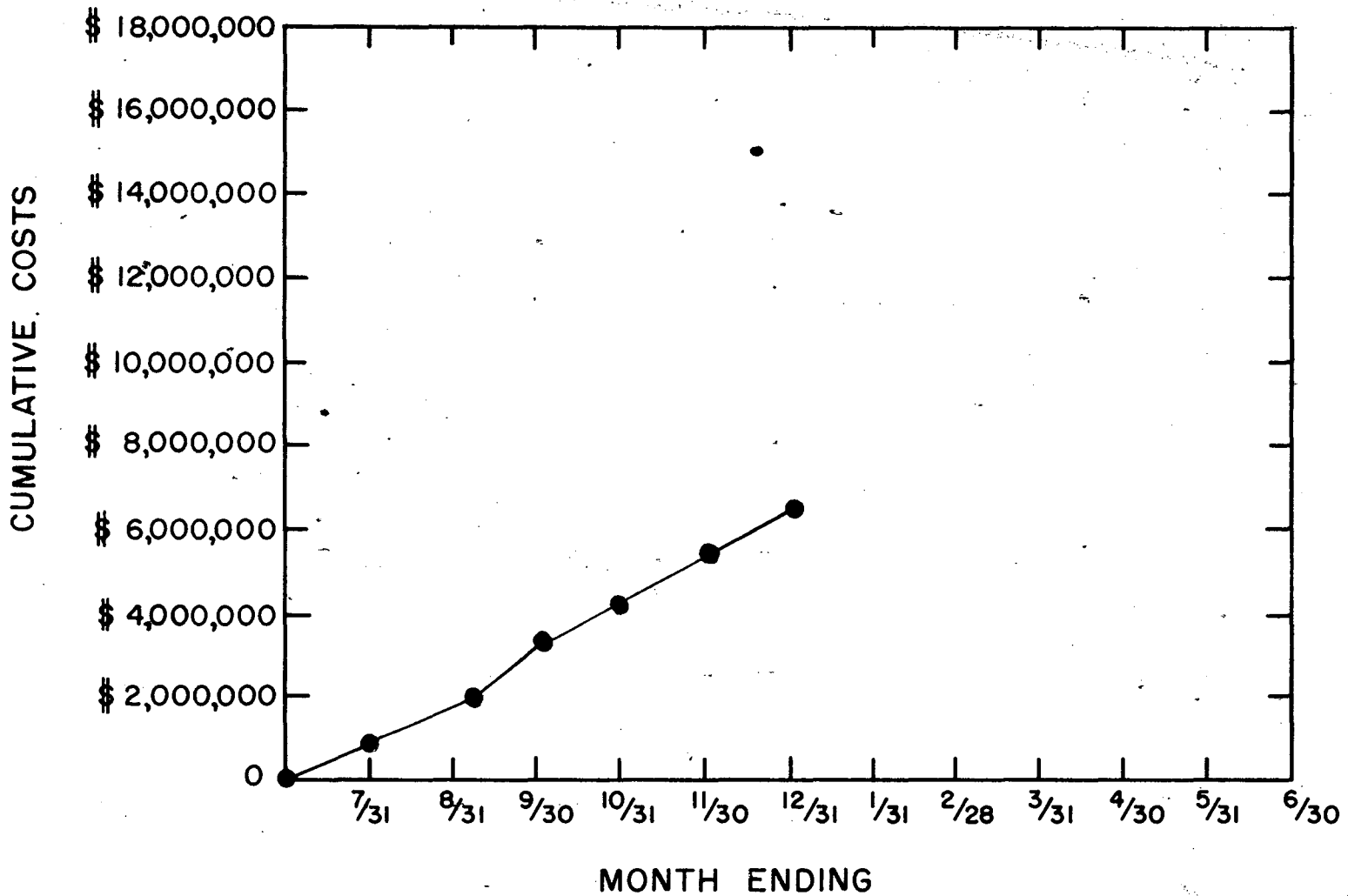


FIG. 3

CONFIDENTIAL

MONTHLY OPERATING COSTS  
PROGRAM 3000

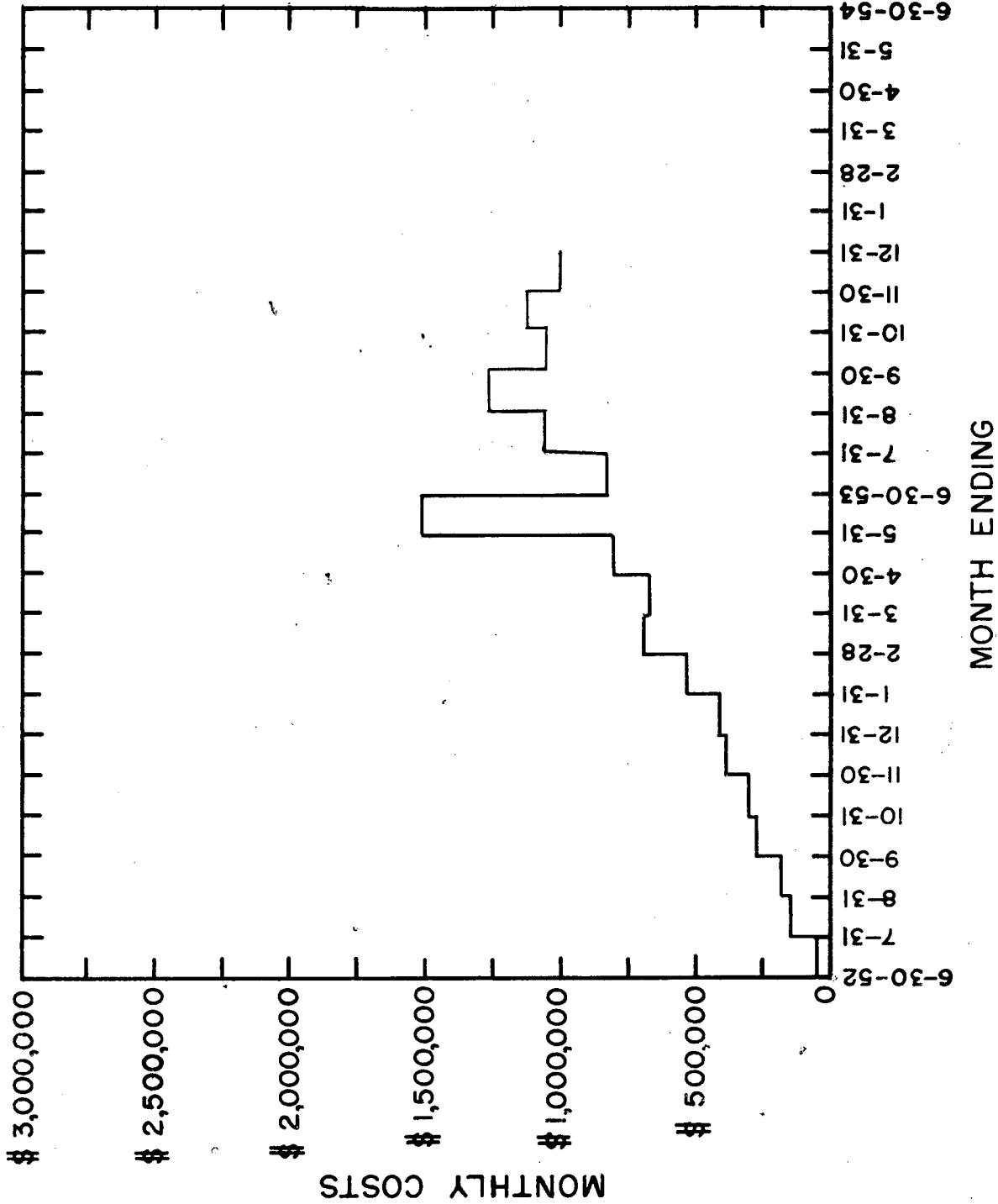


FIG. 4

CONFIDENTIAL

~~CONFIDENTIAL~~

~~CONFIDENTIAL~~