

UCSF

UC San Francisco Previously Published Works

Title

Phosphoinositide 3-kinase p110 $\delta$  promotes lumen formation through the enhancement of apico-basal polarity and basal membrane organization

Permalink

<https://escholarship.org/uc/item/1q58896k>

Journal

Nature Communications, 6(1)

ISSN

2041-1723

Authors

Peng, Juan

Awad, Aline

Sar, Sokhavuth

et al.

Publication Date

2015

DOI

10.1038/ncomms6937

Peer reviewed



# HHS Public Access

Author manuscript

*Nat Commun.* Author manuscript; available in PMC 2016 November 03.

Published in final edited form as:

*Nat Commun.* ; 6: 5937. doi:10.1038/ncomms6937.

## Phosphoinositide 3-kinase p110 $\delta$ promotes lumen formation through enhancement of apico-basal polarity and basal membrane organization

Juan Peng<sup>#1,2</sup>, Aline Awad<sup>#1,2</sup>, Sokhavuth Sar<sup>1,2</sup>, Ola Hamze Komaiha<sup>1,2</sup>, Romina Moyano<sup>1,2</sup>, Amel Rayal<sup>1,2</sup>, Didier Samuel<sup>1,2,3</sup>, Annette Shewan<sup>4</sup>, Bart Vanhaesebroeck<sup>5</sup>, Keith Mostov<sup>6</sup>, and Ama Gassama-Diagne<sup>1,2</sup>

<sup>1</sup> Univ Paris-Sud, UMR-S 785, Villejuif, F-94800, France;-Inserm

<sup>2</sup> Unité 785, Villejuif, F-94800, France

<sup>3</sup> AP-HP Hôpital Paul Brousse, Centre Hépatobiliaire, F-94800 Villejuif, France

<sup>4</sup> School of Chemistry and Molecular Biosciences, The University of Queensland, St Lucia, Brisbane, Queensland 4072, Australia

<sup>5</sup> Cell Signalling, UCL Cancer Institute, University College London, 72 Huntley Street London WC1E 6BT, UK

<sup>6</sup> Departments of Anatomy, and Biochemistry and Biophysics, University of California San Francisco, School of Medicine, 600 16th Street, San Francisco, CA 94143-2140

# These authors contributed equally to this work.

### Abstract

Signaling triggered by adhesion to the extracellular matrix plays a key role in the spatial orientation of epithelial polarity and formation of lumens in glandular tissues. Phosphoinositide 3-kinase signaling in particular is known to influence the polarization process during epithelial cell morphogenesis. Here, using Madin-Darby canine kidney epithelial cells grown in 3D culture, we show that the p110 $\delta$  isoform of phosphoinositide 3-kinase colocalizes with focal adhesion proteins at the basal surface of polarized cells. Pharmacological, siRNA- or kinase-dead mediated inhibition of p110 $\delta$  impair the early stages of lumen formation, resulting in inverted polarized cysts, with no laminin or type IV collagen assembly at cell/extracellular matrix contacts. p110 $\delta$  also regulates the organization of focal adhesions and membrane localization of dystroglycan. Thus, we uncover a previously unrecognized role for p110 $\delta$  in epithelial cells in the orientation of the apico-basal axis and lumen formation.

---

Correspondence: ama.gassama@inserm.fr.

#### Contributions

J.P and A.A contributed equally to the manuscript and performed most of the experimental work and editing of the manuscript; S.S, O.H.K, R.M, A.R participated in experimental procedures. D.S discussed the data A.S and B.V participated in the design of experiments, the writing and editing of the manuscript; K.M contributed to the conception of the project, the writing and editing of the manuscript. A.GD conceived and supervised the project, designed experiments and wrote the manuscript. All the authors contributed to discussion of the data and the revision of the manuscript.

#### Competing financial interests

BV is a consultant to Retroscreen (London, UK) and Karus Therapeutics (Oxford, UK).

## INTRODUCTION

Apical-basal polarity is a fundamental feature of epithelial cells required for structural and functional integrity of the epithelial tissue<sup>1-2</sup>. Conversely, disruption of polarity in epithelial cells is often associated with infectious diseases and cancer<sup>3</sup>. Apical-basal polarity is initiated by signaling from cell-cell and cell-to-extracellular matrix (ECM) contacts<sup>4-5</sup>. Events such as intracellular trafficking<sup>6</sup>, cytoskeletal organization<sup>7</sup> and actions of evolutionary conserved complexes mediate further development of the apical and basolateral membrane domains<sup>8</sup>. Several recent reports have demonstrated that mechanical factors are also important regulators of cell polarity<sup>9-10</sup>. Establishment of polarity in epithelial cells results in the segregation of plasma membrane in an apical domain facing the outside surface of the body, or the lumen of internal cavities, and the basolateral domain oriented away from the lumen<sup>11</sup>.

The phosphoinositide 3-kinase (PI3K) family of lipid kinases is divided into three different classes based on primary structure, regulation and lipid substrate specificity. The class I PI3Ks are the best characterized and are frequently deregulated in cancer<sup>12</sup>. Mammals have four Class I PI3K isoforms, all of which are heterodimeric PI3K enzymes consisting of a regulatory subunit in complex with a 110 kDa catalytic subunit, either p110 $\alpha$  (PI3K $\alpha$ ),  $\beta$  (PI3K $\beta$ ),  $\gamma$  (PI3K $\gamma$ ) or  $\delta$  (PI3K $\delta$ ). p110 $\alpha$  and p110 $\beta$  are ubiquitously expressed, whereas p110 $\gamma$  and p110 $\delta$  are enriched in cells of hematopoietic lineage<sup>13</sup>. All class I PI3Ks produce the phosphatidylinositol(3,4,5)-triphosphate (PtdIns(3,4,5)P<sub>3</sub>) lipid that controls a complex cellular signaling network, with crucial roles in regulation of apicobasal polarity and epithelial cell morphogenesis<sup>14-15-16-17-18</sup>. PtdIns(3,4,5)P<sub>3</sub> signals can be terminated through the action of the 3-phosphatase PTEN or the 5-phosphatases SHIP1/2 to produce PtdIns(4,5)P<sub>2</sub> and PtdIns(3,4)P<sub>2</sub>, respectively<sup>19-20</sup>. In polarized epithelial cells, PtdIns(3,4,5)P<sub>3</sub> and PI3Ks are mainly present on the basolateral membrane<sup>21</sup> while PTEN plays a central role in the formation of the apical membrane<sup>22</sup>. We have recently reported that SHIP2 is present at the basolateral membrane and regulates cell polarization<sup>23</sup>.

Although the involvement of PtdIns(3,4,5)P<sub>3</sub> has previously been established in the polarization of epithelial cells, the underlying mechanisms and the function of the specific PI3K isoforms in this process have not yet been addressed. Here, we demonstrate the presence of p110 $\delta$  at the basolateral membrane of polarized MDCK cysts. Our data also reveal that p110 $\delta$  is required to orient the apical-basal axis and lumen formation through both focal adhesions and basal membrane organization.

## RESULTS

### p110 $\delta$ activity controls apico-basal axis and lumen formation

All class I PI3K isoforms generate PtdIns(3,4,5)P<sub>3</sub> and thus the kinase activity of individual PI3K isoforms cannot be readily distinguished in cells by detection of their lipid product or by using broad spectrum PI3K inhibitors such as wortmannin and LY294002.

We therefore tested ATP-competitive isoform-selective inhibitors of PI3K<sup>24</sup> on apico-basal polarity of MDCK grown in 3D as a model system. These include PI-103, a multi-targeted inhibitor for p110 $\alpha$ / $\beta$ / $\delta$ / $\gamma$  which inhibits p110 $\alpha$  most efficiently but also targets p110 $\beta$  at 10 to 30-fold higher concentrations, and the isoform-selective inhibitors AS-605240, TGX-115 and IC87114 that target p110 $\gamma$ , p110 $\beta$ /p110 $\delta$  and p110 $\delta$  respectively. The specificity profile of these compounds was previously determined by measuring IC<sub>50</sub> values *in vitro* against purified PI3K family members<sup>24</sup>. We also used CAL-101, now called Idelalisib, a derivative of IC87114 with increased potency, that is in clinical trials for B-cell malignancies<sup>25-26</sup>.

To test these pharmacological inhibitors on apico-basal polarity, single MDCK cells were grown on matrigel to form cysts. Twenty-four hours after plating, cells were treated or not with the different PI3K inhibitors for 72 h, followed confocal microscopy analysis. In non-treated control cysts,  $\beta$ -catenin staining revealed a monolayer of polarized cells surrounding an open central lumen as visualized by the apical marker podocalyxin (PCX) (Fig. 1a, left panel). Following the localization of PCX enabled investigation of the impact of PI3K inhibition on the establishment of epithelial apico-basal polarity. The four major phenotypes (multi lumens, no lumen, small and inverted polarized cysts) obtained following treatments with the different inhibitors are represented in Fig. 1a. The percentages of each phenotype depending on the concentrations of inhibitors were gathered in the supplementary Fig. 1 and presented as pie charts in Fig. 1b. Cysts treated with PI-103 showed a dose-dependent change in lumen formation and cyst growth. At a concentration of 10  $\mu$ M, 62.33% of the cysts presented no lumen and were very small in size. AS-605240, a selective p110 $\gamma$  inhibitor, had effects similar as PI-103, even though the number of small cysts was reduced (36.68% at 10  $\mu$ M). Treatment of cysts with TGX115 led to the formation of cysts with multi lumens and no lumen. Moreover a small proportion (6.52% at 10  $\mu$ M) of cysts with inverted polarity was seen, detected via the persistence of PCX localized at the cyst periphery. Treatment with the p110 $\delta$  inhibitor IC87114 increased the number of cysts with inverted polarity significantly in a dose-dependent manner, from 3.14 % to 34.31 % at 0.1  $\mu$ M and 10  $\mu$ M of IC87114, respectively. These data were confirmed using CAL-101 (Idelalisib), another specific inhibitor of the p110 $\delta$ . Together these data indicated that all the isoforms of class I PI3K participate in the establishment of epithelial cell polarity. However, only inhibition of p110 $\delta$  elicited an inversion of apico-basal polarity in a population of cysts, which is suggestive of a specific role of the latter isoform of PI3K in the establishment of the apico-basal polarity axis.

To validate this proposition, we further investigated the effect of IC87114 at 10  $\mu$ M on the different stages of lumen formation (Fig. 2a) as described in a previous report<sup>27</sup>. As presented in the top panels of Fig. 2a when plating individual MDCK cells in 3D culture at the early stage of cyst formation, PCX initially localized at the ECM-contacting surface in early aggregates with  $\beta$ -catenin accumulating at cell-cell junctions. As cysts develop polarity, PCX is displaced at the center of the cell-cell contact at a site called the apical membrane initiation site (AMIS). The lumen then starts to develop at a site termed the 'pre-apical patch' (PAP) at 48 h of culture and becomes visible at 72 h and then continues to develop as seen at 96 h of culture (Fig. 2a). In striking contrast to control cysts, upon treatment with IC87114, PCX was found to remain at the ECM surface until 96 h, while the cells continued to proliferate and maintain cell-to-cell contacts as shown by  $\beta$ -catenin and

nuclei staining (Fig. 2a). We also analyzed the localization of the tight junction protein Zonula occludens protein 1 (ZO-1) at the early stages of lumen formation. As observed for PCX, treatment with IC87114 resulted in the inappropriate accumulation of ZO-1 at the cell periphery, while tight junctions formed at the apico-lateral boundary in control cysts (Fig. 2b). Statistical analysis of the impact of p110 $\delta$  inhibition on the observed lumen morphologies indicated a significant decrease in the proportion of cysts with a central lumen (or lumen precursor) regardless of days in culture (Fig. 2c). These data strongly suggest that the enzymatic activity of p110 $\delta$  is required to orient the apico-basal polarity axis and to drive the formation of AMIS, which is necessary for lumen formation.

### **p110 $\delta$ is expressed at the basolateral membrane**

The results described above indicated a crucial function of p110 $\delta$  in establishment of cell polarity. p110 $\delta$  is known to be mainly expressed in cells of hematopoietic lineage, and although several studies have reported expression in epithelial cells<sup>28-29</sup>, its possible role in epithelial morphogenesis has not been determined. Thus we decided to further characterize the p110 $\delta$  protein expression and localization in MDCK cells.

First we examined by immunoblot the expression of p110 $\delta$  in MDCK cells using as a positive control a lysate from HeLa cells, a non-leukocyte cells which is known to express a high level of p110 $\delta$ <sup>13-30</sup>. A 110 kDa protein was detected in both cell lines, however the intensity of the signal was very weak in MDCK cells (Supplementary Fig. 2a; the specific band is marked with an arrow) which is in line with qRT-PCR analysis for p110 $\delta$  mRNA abundance in these cells (Supplementary Fig. 2b). The amplified qRT-PCR product from MDCK cells presented a product of the same size as the product isolated from HeLa cells (Supplementary Fig. 2c) and with similarity to the p110 $\delta$  canine sequence, as shown in (Supplementary Fig. 2d). Then we examined the presence of the different class I PI3K isoforms in MDCK cells using qRT-PCR. Data presented in Supplementary Fig. 2e indicated that the p110 $\beta$  isoform was the most highly expressed. Together these results indicated the presence of the p110 $\delta$  in MDCK cells.

Next we validated the antibody and the subcellular localization of p110 $\delta$  in polarized MDCK cells through transfection of the cells with different p110 $\delta$  constructs. First, MDCK cells were transfected using an untagged p110 $\delta$  cDNA (UT-p110 $\delta$ ) and the efficiency of the transfection was validated by immunoblot analysis (Fig. 3a) using a p110 $\delta$ -specific antibody (sc: anti-p110 $\delta$ ). In transfected cells, we observed an intense signal at 110 kDa corresponding to the size of the signal observed in the lysate of HeLa cells, used here as a positive control. In parallel we assessed the subcellular localization of the exogenous p110 $\delta$  protein in transfected cells plated to form cysts in matrigel culture (Fig. 3b). Staining of the aforementioned cysts with one of the commercially available p110 $\delta$ -specific antibodies (sc: Anti-p110 $\delta$ ) revealed a basolateral signal in both control and the untagged p110 $\delta$  cDNA transfected cells, as expected. As anticipated based upon the results of the immunoblotting analysis using this antibody (Fig 3a), the signal was weaker in control cells when compared to the transfected cells (Supplementary Fig. 3). Similar results were obtained using a different commercial antibody raised against p110 $\delta$  (ab: anti-p110 $\delta$ ) (Supplementary Fig. 3; Fig. 3B). Based on these immunolocalisation data it was determined that the antibody

from abcam was more appropriate for downstream immunofluorescence studies because of the higher signal intensity achieved using this reagent in these cells. Next, we used Myc tagged-p110 $\delta$  cDNAs expressed from two different expression vectors (Myc1-p110 $\delta$ , Myc2-p110 $\delta$ , see methods). Immunoblot analysis revealed that the two exogenous proteins were detected with both p110 $\delta$  and Myc specific antibodies as shown in Fig. 3c and supplementary Fig.4a, respectively for Myc2-p110 $\delta$  and Myc1-p110 $\delta$ . Furthermore, we used the Myc tag and p110 $\delta$  antibodies to analyze by immunofluorescence the cysts from cells transfected or not (Ctrl) with Myc2-p110 $\delta$  cDNA. The two antibodies specifically labeled the Myc tagged-p110 $\delta$  protein at the basolateral membrane (Fig. 3d). The signal of p110 $\delta$  expression in the Myc2-p110 $\delta$  expressing cysts was measured by ImageJ analysis and compared to endogenous p110 $\delta$  signal (Fig. 3e). These data confirmed a significantly increased signal intensity of p110 $\delta$  upon enforced expression of exogenous protein (Fig. 3e). 3D reconstructions for Ctrl and Myc2-p110 $\delta$  cysts were presented in Fig. 3d. Basolateral localization was also observed for Myc1-tagged p110 $\delta$  (Supplementary Fig. 4b). Thus together these data indicated that p110 $\delta$ -specific antibodies detected both endogenous and the exogenous proteins. We concluded that the localization of exogenous p110 $\delta$  is similar to the subcellular distribution observed for the endogenous protein at the basolateral membrane. Co-staining of p110 $\delta$  in Myc2-p110 $\delta$  expressing cysts with  $\beta$ -catenin indicated that the distribution pattern of p110 $\delta$  is different to that of  $\beta$ -catenin which is mainly present in the lateral domain (Supplementary Fig. 4c).

### **p110 $\delta$ membrane localization depends on its enzymatic activity**

In subsequent experiments, we analyzed p110 $\delta$  protein cellular localization during cystogenesis (Fig. 4) and we confirmed its basolateral staining at the different stages of cyst formation (Fig. 4a). Treatment with IC87114 induced displacement of p110 $\delta$  from the membrane at the ECM contact site to the cytoplasm as demonstrated by analysis of the p110 $\delta$  staining signal using imageJ (see methods) (Fig. 4b, c). We next sought to evaluate the effect of IC87114 on the exogenous Myc tagged-p110 $\delta$  membrane localization (Fig. 4d). Similarly to the endogenous protein, IC87114 treatment significantly decreased the membrane signal of Myc with a concomitant shift into the cytoplasmic area (Fig. 4e).

Finally we used the kinase-dead mutant (R894P) of p110 $\delta$  (Myc-p110 $\delta$  kinase-dead) to validate the effects of the pharmacological inhibitors. MDCK cells were transfected with the corresponding cDNA and grown on matrigel to form cysts. Myc-p110 $\delta$  kinase-dead protein, revealed with Myc antibody, was significantly localized in the cytoplasm (Fig. 4d,e) demonstrating that membrane localization of p110 $\delta$  is dependent on its enzymatic activity. Of interest, these cells expressing the mutant protein formed inverted polarized cyst (about 29 %) with actin present at the cell periphery while in control cysts actin marks the central lumen (Fig. 4d). These data are analogous to those obtained with treatment of cells using CAL-101 or IC87114 (Fig. 1) and confirmed the requirement of active p110 $\delta$  to orient polarity and allow lumen formation.

PtdIns(3,4,5)P<sub>3</sub>, monitored using a specific antibody, was mainly observed at the basolateral membrane, in line with previous studies using the PH domain of Akt as a PtdIns(3,4,5)P<sub>3</sub> probe<sup>21</sup>. In accordance with the observations made for the p110 $\delta$  protein localization in

cysts (Supplementary Fig. 4d,e), inhibition of its activity significantly reduced the observed PtdIns(3,4,5)P<sub>3</sub> membrane localization with a concomitant shift of the immuno-reactive population to a cytoplasmic pool. Taken together, these results strongly suggest that localization of the majority of PtdIns(3,4,5)P<sub>3</sub> at the basal membrane in MDCK cysts is dependent on p110 $\delta$  kinase activity.

### **p110 $\delta$ controls Rac1 activation and BM assembly**

Cell contacts with the ECM trigger numerous signaling events that provide the initial cue to define the polarity axis. The laminins are major and important biologically active components of the basement membrane (BM), a thin layer of ECM underlying epithelial cells. Several publications have now reported the crucial role of laminins in orientation of apico-basal polarity axis through the activation of Rac1<sup>31-32-33-34</sup>. PI3Ks are important regulators of Rac1<sup>21-35</sup> and its implication in Rac1-mediated regulation of lumen formation has been evoked<sup>36</sup>.

Therefore and according to the observed effects of p110 $\delta$  inhibition on orientation of the apico-basal axis, we evaluated Rac1 activation and, importantly, it is increased with lumen formation. Rac1 activation was significantly reduced by treatment of cysts with IC87114 (supplementary Fig. 5), suggesting that p110 $\delta$  activity could affect activation of Rac1. Next we examined the possible role of p110 $\delta$  activity on laminin assembly. As presented on Fig. 5a, (the XZ section was presented below each picture and the 3D reconstruction was shown on the right part of the panel), laminin was visible at the cyst periphery and formed a prominent structure covering the control cysts that disappeared upon treatment of cells with IC87114, while laminin was still present in the culture gel. Under such conditions, PCX is externalized (red staining) and further confirms the inverted polarization of the IC87114 treated cysts. The treatment of cysts with CAL-101 led to data similar to those obtained using IC87114. Then we analyzed laminin staining in cysts from MDCK cells expressing the Myc-p110 $\delta$  kinase-dead mutant (Fig. 5b) and no laminin was found surrounding these cysts suggesting that the recruitment of laminin at the site of cell contact with the ECM required p110 $\delta$  activity. Along with laminins, type IV Collagen is a key ECM protein, essential to maintaining the structural integrity of BM<sup>37</sup>. Accordingly we also analyzed type IV Collagen assembly in the system. Of interest, the treatment of cysts with IC87114 or CAL-101 removed the layer of type IV Collagen underlying the cysts as observed in controls (Fig. 5c). Taken together, these results strongly suggested that p110 $\delta$  is necessary for assembly of the BM at the cell surface and that it probably fulfills this role by regulation of a signaling pathway that involved Rac 1 activation.

### **ECM regulates p110 $\delta$ expression**

To further characterize the interplay between PI3K and ECM, first MDCK cells were transfected with Myc-tagged p110 $\delta$  cDNA (Myc2-p110 $\delta$ ) and plated on matrigel to form cysts, then laminin and type IV Collagen distributions were assessed at the different stages of cystogenesis. As presented on Fig. 6a, laminin was visible at the cyst periphery and the signal significantly increased from AMIS stage (24 h of culture) to large lumen at 96 h of culture (Fig. 6a, b). The laminin layer surrounding the cysts became thicker whatever the stage of polarization due to the enforced expression of Myc 2-p110 $\delta$  (Fig. 6a, b). These data

are consistent with those obtained from the analysis type IV Collagen distribution in these cysts (Fig. 6c, d).

Next we examined the possible role of ECM in regulating the expression of p110 $\delta$ . To this end multiwell plates were either coated or not with various ECM components, including: type I collagen, laminin, fibronectin or poly-D-Lysine. MDCK cells were plated for 24 h on the different ECM-coated supports and analysis for the impact of different ECM components on p110 $\delta$  expression was performed by immunoblotting. P110 $\delta$  expression is increased in response to cell interactions with all ECM substrates analysed in comparison to expression levels of p110 $\delta$  expression detected on an untreated support (Ctrl) (Fig. 6e). Similar data were obtained using RTPCR analysis of p110 $\delta$  gene expression under these treatments (Fig. 6f). Moreover we demonstrated that p110 $\delta$  mRNA level increased significantly in cells grown on matrigel (Fig. 6g). Although there were no statistically significant differences between the effects of the different ECM proteins tested in our experimental conditions at the p110 $\delta$  protein level, collectively these data are supportive of a role for ECM components in positively regulating p110 $\delta$  expression,

### Depletion of p110 $\delta$ inverts polarity and impairs BM assembly

To validate the specificity of the observed effects with the pharmacological inhibitors of p110 $\delta$  we used three different siRNAs (si1, si2 and si3) that isoform-specifically reduced the abundance of the p110 $\delta$  transcript, since there was no effect of these siRNAs on the mRNA levels of p110 $\alpha$ ,  $\beta$  and  $\gamma$  (Fig. 7a). The mechanism by which PtdIns(3,4,5)P<sub>3</sub> regulates cellular signaling was first revealed for Akt<sup>38</sup>. Thus we analyzed the effects of p110 $\delta$  expression on the phosphorylation status of Akt. No significant change in pAkt was observed after depletion of p110 $\delta$  using each of the three different siRNAs and upon stimulation of cells with EGF (Supplementary Fig. 6). Consistent results were obtained upon overexpression of Myc-tagged p110 $\delta$ , strongly suggesting that p110 $\delta$  is not a key signaling molecule for Akt phosphorylation (Supplementary Fig. 6). Similar data were previously observed in endothelial cells<sup>39</sup>.

Next, MDCK cells treated or not with siRNA (si3) were grown on matrigel to form cysts. The specificity of si3 was further verified by immunoblot (Fig. 7b). In control cysts, p110 $\delta$  was found at the basal membrane (as described in Fig. 3) and the signal was profoundly reduced in cysts from siRNA treated cells confirming a specific signal for the antibody (Fig. 7c). Consistent with our inhibitors studies, PCX was located at the cyst periphery in siRNA-treated cysts as evidenced by the 3D reconstruction of the confocal data (Fig. 7c right panels). The tight junctions marker (ZO-1), normally present at the tip of  $\beta$ -catenin positive cell-cell contacts in control cysts was now found at the basal region of cysts formed from siRNA-treated cells (Supplementary Fig. 7). Analysis of confocal data indicated that 35 % ( $\pm 2.76$  %) of total cysts presented an inversion of polarity, with PCX present at the external surface (Fig. 7d). These data are consistent to those obtained upon treatment of cells with IC87114 or CAL-101 (Supplementary Fig. 1). The percentage of cysts with inverted polarity observed in our study is also consistent to the outcomes (30-50%) recently published in different studies<sup>34-40</sup>. Moreover in the p110 $\delta$  depleted and inverted polarized cysts, no laminin (Fig. 7e), or type IV collagen (Fig. 7f), was detected at the cyst periphery. Taken



together, these data confirmed that p110 $\delta$  is required for the orientation of the apico-basal axis, lumen formation, laminin and type IV Collagen assembly through an inside out signal.

### **p110 $\delta$ is required for focal adhesion stability**

The spatial cues from cell adhesion to the ECM are mediated primarily through integrins, an adhesion molecule superfamily of heterodimeric transmembrane proteins composed of  $\alpha$  and  $\beta$  subunits with variable affinities toward the different ECM proteins and specific roles in ECM assembly and remodeling<sup>41-42</sup>.  $\beta$ 1 integrins are widely expressed in epithelial cells and studies using both function-blocking antibodies and genetic deletion approaches have revealed that they control basement membrane deposition control basement membrane assembly and have a central role in establishing apico-basal polarity<sup>33-43</sup>. The integrin  $\beta$ 1 is involved in different combinations with many alpha subunits including  $\alpha_2$  and  $\alpha_5$  showing a preference for collagen and fibronectin receptors, respectively. The  $\alpha_2\beta$ 1 integrin combinations are also able to interact with laminin<sup>41</sup>. Therefore we analyzed the  $\beta$ 1,  $\alpha_2$  and  $\alpha_5$  integrins in p110 $\delta$  disrupted cells. In control cysts the staining of integrin  $\beta$ 1, integrin  $\alpha_2$  and integrin  $\alpha_5$  were mainly detected at the basolateral membrane of polarized cysts. Knock-down of p110 $\delta$  expression using siRNA as well as treatment of cells using CAL-101 dramatically reduced the staining for the different integrins and particularly of integrin  $\beta$ 1, where the signal was largely abolished (Supplementary Fig. 8).

The binding of integrins to ligand initiates the connection between the cytoskeleton and the ECM and contributes to the recruitment of additional cytoskeletal and signalling proteins such as talin, vinculin and paxillin that create focal adhesions and regulate cell shape and polarity<sup>1-44</sup>. Thus, to further characterize the effect of p110 $\delta$  on ECM signaling and focal adhesions we examined both paxillin and vinculin expression and organization. In control cysts paxillin was organized at the basolateral membrane adjacent to laminin, while the protein became more cytoplasmic and diffuse upon treatment of cysts with IC87114 (Fig. 8a, b). Similar observations were made for vinculin (Fig. 8c, d), indicating that p110 $\delta$  activity regulates paxillin and vinculin sub-cellular localization and partly colocalized with them (Supplementary Fig. 9).

We next investigated focal adhesions by growing cells on glass to better visualize these structures. Under such conditions vinculin localized at the ends of actin stress fibers whereas in cells treated with p110 $\delta$  siRNA vinculin formed smaller and punctuate foci dispersed in the cytoplasm (Fig. 8e). A prominent effect of p110 $\delta$  siRNA was also observed on paxillin distribution (Fig. 8f). The level of tyrosine phosphorylation of paxillin is known to positively correlate to dynamism of adhesion sites<sup>45</sup>. Decreased paxillin phosphorylation reduces the turnover of focal contacts and their stabilization, which is required for cell differentiation and polarization. Immunoblotting revealed a decrease in the phosphorylation of paxillin on tyrosine-118 (p-Paxillin) upon p110 $\delta$  overexpression (Fig. 8g), suggesting that p110 $\delta$  could promote the stabilization of focal contacts at the basal membrane.

### **p110 $\delta$ colocalizes with $\beta$ -DG and regulates its localization**

Although the most intensively studied receptors for ECM compounds are integrins, dystroglycan (DG) is another high-affinity laminin receptor, originally identified in studies

on muscular dystrophy<sup>46-47</sup>. DG is a heterodimeric glycoprotein that consists of a transmembrane  $\beta$ -subunit and a non-covalently associated, extracellular  $\alpha$ -subunit. The cytoplasmic domain is linked to the actin cytoskeleton, whereas the extracellular domain is implicated in laminin assembly and subsequently shown to play important roles in the cell-ECM interactions, BM assembly, cell polarity and morphogenesis<sup>48-49-50-51</sup>.

Consistent with the absence of ECM at the periphery of inverted polarized cysts, we hypothesised that dystroglycan could also be regulated by p110 $\delta$ . In control cysts,  $\beta$ -dystroglycan ( $\beta$ -DG) was clearly visible at the basal membrane at the ECM contacts and some colocalization with p110 $\delta$  was observed, which increased upon p110 $\delta$  overexpression (Fig 9a). In contrast siRNA mediated p110 $\delta$  knock-down strongly reduced  $\beta$ -DG membrane localization with a drastic reduction of the colocalization signal (Fig. 9a). Treatment of cysts with IC87114 yielded similar results to those observed using the isoform specific siRNA strategy (Fig. 9b). We further reinforced these observations by using CAL-101 to inhibit p110 $\delta$  enzymatic activity. As shown in 2D and 3D reconstructions, the  $\beta$ -DG signal that outlined cell periphery in un-treated cysts disappeared and instead accumulated at the bottom of the cysts (Fig. 9c). Collectively, these data emphasize the functional contribution of p110 $\delta$  in  $\beta$ -DG localization at the basolateral membrane. Next we investigated the existence of a feedback control loop of  $\beta$ -DG on p110 $\delta$  expression and localization. In concert with our predictions, siRNA mediated knock down of  $\beta$ -DG led to cysts exhibiting inversion of polarity and to the absence of laminin accumulation at the cyst periphery (Fig. 9 d,e). Under these experimental conditions p110 $\delta$  was found mostly in the cytoplasm (Fig. 9f). In conclusion, these data demonstrate that p110 $\delta$  localization at the basal membrane is also regulated by an outside in signal from the ECM via  $\beta$ -DG that drives the orientation of polarity axis.

## DISCUSSION

PI3Ks transmit signals from transmembrane receptors such as receptor tyrosine kinases (RTKs) and G-protein coupled receptors (GPCRs) to control a diverse array of signaling pathways through spatiotemporal recruitment of multiple effectors containing PIs specific binding domains. Thus they regulate key cellular processes including, cell migration, proliferation, differentiation and survival and as such are targeted for intensive research across the fields of inflammation, immunity, cancer and metabolic diseases<sup>12-38-52</sup>. PtdIns (3,4,5)P3, the major product of class I PI3K, plays a crucial role in the generation of epithelial polarity<sup>16</sup>. In line with these previous publications, our results indicate that all of the isoforms of class IA PI3Ks participate in MDCK cyst morphogenesis and the development of epithelial polarity (Figure 1). The different phenotypes observed using specific isoform inhibitors (Figure 1) suggested that each of the isoforms has a particular function at a different step of the intricate polarity program. Unexpectedly, only inhibition of the isoform delta, the least abundantly expressed isoform in MDCK cells, affects initiation of lumen formation and orientation of the apico-basal polarity axis.

Through the use of mice with inactivated p110 $\delta$  and also selective inhibitors, such as the IC87114 and CAL-101 compounds, the p110 $\delta$  isoform of PI3K has been extensively studied in leukocytes and is designated as a potential therapeutic target in immunity, inflammation,

and hematological malignancies<sup>53,54,55,56,57</sup>. Nevertheless mice lacking PI3K delta have thus far only been studied under basal conditions. Yet mice lacking PI3K delta have thickened intestinal mucosa with hyperplastic glands and mixed inflammatory infiltration of the lamina propria<sup>54</sup>. Even though these effects were attributed to neutrophilic inflammation, one couldn't exclude an effect on the epithelial cells which composed the mucosa. Thus further *in vivo* studies were required to determine the polarity defects associated with PI3K delta knock down *in vivo*. The preponderance of studies of p110 $\delta$  function in hematological systems has contributed to the dogma of a restricted role of p110 $\delta$  in cells of hematopoietic lineage. Of interest the development of PI3K isoform-selective inhibitors<sup>12-58-59-60-61</sup> and the determination of its crystal structure<sup>62</sup> has advanced the emerging studies of p110 $\delta$  function in non-hematopoietic cells. Still, most of these studies are related to p110 $\delta$  expression in cancer where p110 $\delta$  has been shown to be the predominant isoform expressed in different human solid tumor cells including; glioblastoma, neuroblastoma, prostate carcinoma and breast cancer<sup>63</sup>. A recent report indicated a somatic mutation in PI3K  $\delta$  that is associated with recurrent infections and airway damage<sup>70</sup>. Thus a better understanding of the regulation and function of p110 $\delta$  in non-hematopoietic cells and their connections to oncogenesis is both warranted and timely.

In the present study we provided important insights into the fundamental role of p110 $\delta$  in establishment of apico-basal polarity axis and lumen formation in MDCK cells. It is generally accepted that acquisition of epithelial polarity depends on signaling generated through cell interactions with neighboring cells and with the surrounding ECM<sup>4-5,31</sup>. Integrins are critical components of this signaling pathway and are known modulators of PI3K and PtdIns(3,4,5)P3 levels<sup>33,65</sup>. Integrin-mediated PI3K activation induces Rac1 activation and thereby organizes the actin cytoskeleton and recruitment of adaptor proteins within adhesion complexes (that contain a large set of proteins, including: paxillin and vinculin<sup>66</sup>). Our data revealed a role for p110 $\delta$  in the establishment of the apico-basal polarity axis acting via outside-in signaling cascade that is triggered by cell adhesion to the ECM where it acts to establish apico-basal polarity axis and lumen formation that are crucial to epithelial morphogenesis. Of note, previous studies have reported the contribution of other isoforms of PI3K, including p110 $\alpha$  and p110 $\beta$ , in the control of integrin signaling<sup>65,67</sup> and Rho GTPases<sup>68</sup>. Thus the contributions of the other PI3K isoforms in epithelial organization were not excluded.

We also demonstrated that inhibition of p110 $\delta$  activity or knock-down of its expression affected laminin and type IV collagen assembly at the cyst periphery. Moreover these treatments profoundly reduced integrin expression and impaired both paxillin and vinculin focal distribution, where instead these proteins were found diffuse in the cytoplasm (Fig. 8). . Furthermore we showed that different ECM proteins positively regulated p110 $\delta$  expression (Fig. 6e, f). Together these data also demonstrated a role for p110 $\delta$  in inside out signaling to control basal membrane organization. However, further investigations are necessary to establish the precise influence of the type of ECM component, the concentration and the stiffness of the ECM on p110 $\delta$  expression and on the cell polarization process in general.

Using a specific antibody we demonstrated the presence of PtdIns(3,4,5)P<sub>3</sub> at the basolateral membrane of polarized cysts as previously reported<sup>21</sup>. Interestingly, treatment of cysts with IC87114 strongly reduced PtdIns(3,4,5)P<sub>3</sub> accumulation at the membrane. It is noteworthy that the intensity of the staining for PtdIns(3,4,5)P<sub>3</sub> in the inhibitor treated cells was not impacted, which indicates that p110δ is not the only enzyme responsible for PtdIns(3,4,5)P<sub>3</sub> production in our system. However, the displacement of PtdIns(3,4,5)P<sub>3</sub> from the basal membrane upon treatment with IC87114 suggested that p110δ is the PI3K isoform activated at the site of ECM contact during initiation of the epithelial cell polarization process. These findings are in concordance with our previous description of PtdIns(3,4,5)P<sub>3</sub> as a compass for cell polarization and as a regulator of basolateral membrane formation<sup>21</sup>.

PI3K is a known effector of small family of GTPases including Rac1 and the contribution of PI3K downstream of the laminin signal in the regulation of cell polarity has been reported<sup>36</sup>. However, it must be noted that the majority of the previous studies were performed using the broad-spectrum inhibitors of class I PI3K, including LY294002 or wortmannin, and as such they do not enable identification of the specific PI3K isoform involved. Here we provide the first evidence that the p110δ isoform of PI3K regulates Rac1 activation in the context of apico-basal polarization in epithelia (Supplemental Fig. 5).

DG is another receptor for laminin that plays critical roles in basement membrane organization and epithelial polarity through the assembly of extracellular Laminin<sup>47-48-51</sup>. However, the underlying mechanisms remain poorly understood. This study revealed that p110δ regulated the maintenance of β-DG at the basal membrane and reciprocally β-DG controlled membrane localization of both p110δ and its lipid product PtdIns(3,4,5)P<sub>3</sub>. DG regulate actin organization and participate in Rac1 activation<sup>69</sup> suggesting that p110δ could act at the crossroads between integrin and DG mediated ECM signaling to drive cytoskeleton organization and Rac1 activation that are required for spatial orientation of polarity. However, Rac1 does not seem to be the only downstream effector of ECM/integrin signaling during cell polarization<sup>40</sup>. Understanding the source of this apparent discordance regarding the role of Rac1 requires further investigation. There are important changes in ECM composition according to the cell type and the differentiation stage<sup>69</sup>. Moreover, there are different receptors for the myriad ECM proteins and almost 100 different proteins are present in focal complexes, including signaling molecules and adaptors. The apparent complexity of cell-matrix adhesions suggests that only a subset of proteins participate in different signaling pathways, clearly indicating that more studies are required to elucidate the intricacies of the signaling pathways that link cell/ECM contacts to the polarization process.

PAR-1, a downstream target of the aPKC-PAR-3-PAR-6 complex, regulates the basolateral localization of the DG complex<sup>49</sup>. At the early stage of cyst formation, PCX is localized at the cell periphery in contact with the ECM. It was shown that membrane trafficking regulated by Rab proteins in cooperation with Par3–aPKC drives vesicles to the apical surface to initiate lumen formation<sup>27</sup>. We have shown here that inhibition of p110δ activity induced maintenance of podocalyxin at the cell periphery (Fig. 1, 3). Thus one could speculate that PI3Kδ signaling could play an important role in the targeting of these apical cargoes through determination of the polarity axis, although this remains to be determined.

In epithelial cells, dynamic remodeling of the ECM is essential for development and normal tissue homeostasis. However loss of polarity and uncontrolled ECM remodeling often leads to fibrotic diseases and cancer. Thus analysis of p110 $\delta$  in carcinoma, in particular those associated with fibrosis, will be of potential interest for cancer research.

## METHODS

### Inhibitors

TGX115, AS605240, PI-103 and IC87114 (Symansis) were from Kevan Shokat (University of California San Francisco, US) and CAL-101 was purchased from Selleck Chemicals. Stock solutions of the different inhibitors were prepared in dimethyl sulfoxide (DMSO) and the used concentrations were mentioned in the figure legends.

### Antibodies

Two primary antibodies were used for p110 $\delta$ , the rabbit anti p110 $\delta$  from Santa Cruz sc7176 (1:500 dilution is used for immunoblot and 1:50 dilution is used for immunofluorescence staining in Supplementary Fig. 3) and the anti-PI 3 Kinase p110 delta antibody from Abcam ab32401 (1:50 dilution is used for immunofluorescence only). For the other used antibodies were: Mouse anti PtdIns(3,4,5)P<sub>3</sub> (Echelon Biosciences (Tebu-Bio Z-G345), 1:50), mouse Anti  $\beta$ -dystroglycan (Abcam ab49515, 1:50 for immunofluorescence and 1:1000 for immunoblot), rabbit anti type IV collagen (Abcam ab6586, 1:100 for immunofluorescence), Rabbit anti  $\beta$ -catenin (Santa Cruz sc-7199, 1:100 for immunofluorescence), mouse anti integrin  $\beta$ 1 (Santa Cruz sc-18887, 1:50 for immunofluorescence), mouse anti paxillin (Cell Signaling 612642, 1:100 for immunofluorescence and 1:1000 for immunoblot), rabbit anti phospho paxillin Tyr118 (Cell Signaling 2541, 1:100 for immunofluorescence and 1:1000 for immunoblot), rabbit anti Laminin (Sigma L9393, 1:100), mouse anti Vinculin (Sigma 031M4818, 1:100), goat anti Actin (I-19) (Santa Cruz sc-1616, 1:2000), mouse Anti Myc (Sigma M4439 1:100 for immunofluorescence and 1:1000 for immunoblot), mouse anti integrin  $\alpha$ 2 (BD biosciences V75320, 1:50), and mouse anti integrin  $\alpha$ 5 (BD biosciences I55220, 1:50). The mouse anti PCX antibody (1:1000) was from George Ojakian (University of New York Downstate Medical Center), USA. Rat anti ZO-1 antibody (dilution 1:100) was from Bruce Stevenson (University of Alberta, Edmonton, AB, Canada). Secondary antibodies used were highly cross-absorbed anti mouse, anti rabbit or anti goat Alexa Fluor 546 and 488 (Invitrogen, 1:100). Actin was stained with Alexa Fluor 546 phalloidin (Invitrogen A22283, 1:100) and nuclei with Hoechst 34580 (Invitrogen H21486, 1:5000). Secondary HRP antibodies were anti Goat, anti rabbit, or anti mouse (Sigma, 1:2000).

### Cells and 3D culture

MDCK (Madin Darby Canine Kidney) cells (Keith Mostov, UCSF, San Francisco), were cultured in minimal essential medium (MEM) containing Earle's balanced salt solution supplemented with 5% fetal bovine serum and 1% of Penicillin/Streptomycin solution (10000 U/ml/10000  $\mu$ g/ml) at 37°C in 5% CO<sub>2</sub>, 95% air. For 3D culture MDCK cells were trypsinized as 15000 single cells/ml in 2% Matrigel (BD), 500  $\mu$ l of cells were plated in each well of 8-well Lab-Tek II chamber slides (Thermo Fisher Scientific) precovered with Matrigel and grown for 4 days until cysts with lumen formed. The human HeLa cells (from

ATCC) were cultured in Dulbecco's modified Eagle's Medium (DMEM) containing 4.5 g/l glucose supplemented with 10% heat-inactivated fetal bovine serum, 1% nonessential amino acids and 1% penicillin/streptomycin.

To analyze the effect of extra cellular matrix on p110 $\delta$ , MDCK cells were plated for 24 h on 8-well CultureSlides precovered with Fibronectin, poly-D-Lysine, type I Collagen, or Laminin (from BD Biosciences).

### SiRNA, plasmids and cell transfection

The specific p110 $\delta$  duplex RNAi used were: si1: 5'CAACAUCCAGCUAAACAAA[dT][dT]3' and 5'UUUGUUUAGCUGGAUGUUG[dT][dT]3', si2: 5'GAAUACAGUGAGAAUUU[dT][dT]3' and 5'AAAUUCUCACUGUUAUUC[dT][dT]3', si3: 5'CACUUUAUGCUGUGAUCGA[dT][dT]3' and 5'UCGAUCACAGCAUAAAGUG[dT][dT]3'.

The specific  $\beta$ -Dystroglycan duplex RNAi used were: si1: 5'CCUUCUAUGACCACGAGGA[dT][dT]3' and 5'UCCUCGUGUCAUAGAAGG[dT][dT]3', si2: 5'GGCAUUAUGCCAACAAGAA[dT][dT]3' and 5'UUCUUGUUGGCAUAUGCC[dT][dT]3', si3: 5'GUUUAUCUGCACACAGUCA[dT][dT]3' and 5'UGACUGUGUGUGCAGUAAAC[dT][dT]3'.

Human p110 $\delta$  cDNAs were from Bart Vanhaesebroeck, University College London, UK (MTA-1004.0-0-Acad-OUT-NB-4214), either pMT-SM-human p110 $\delta$ -WT-3Myc (Myc 1-p110 $\delta$ ), pCDNA3tk-human p110 $\delta$ -WT-3Myc (Myc 2-p110 $\delta$ ) or the untagged pMT-SM-human p110 $\delta$  (UT-p110 $\delta$ ). For transfection, MDCK cells seeded at low density ( $1 \times 10^4$  cells/cm $^2$ ) were transfected with 100 pmol of specific siRNA or 1  $\mu$ g cDNA using jetPRIME $^{\text{TM}}$  (Ozyme) according to the manufacturer's instructions. For 3D culture, 24 h after transfection, cells were detached with trypsin and plated on Matrigel for 4 days as indicated above.

### Immunofluorescent staining

MDCK cells were rinsed with ice cold Dulbecco's Phosphate Buffered Saline (DPBS) and fixed with 3.7% paraformaldehyde for 30min. Samples were permeabilized and saturated with DPBS supplemented with 0.7% fish gelatin and 0.025% saponin for 30 min at 37°C and then incubated with primary antibodies. After washes staining was performed with secondary fluorescent antibodies, phalloidin and Hoechst. Samples were observed with a Leica TCS SP5 AOBs tandem 30 confocal microscope. Images were collected as TIF files and analyzed with PhotoShop.

### Immunoblot

Cells were lysed in 1 $\times$  lysis buffer (20 mM Tris-HCl (pH 7.5), 100 mM NaCl, 1 mM EDTA, and 1% Triton X-100) containing 1 $\times$  complete protease and phosphatase inhibitor cocktail (Roche diagnostics). An aliquot of quantitated proteins was resolved on SDS-polyacrylamide gel electrophoresis and then electrotransferred onto PVDF membrane. After transfer, the membrane was saturated in DPBS containing 0.1% Tween 20 and 5% milk.

Primary antibodies were added overnight at 4°C. After washes in the presence of DPBS, appropriate secondary antibodies coupled with peroxidase were added. Immunoblotting was revealed with chemiluminescent peroxidase substrate (Chemiluminescent Peroxidase Substrate-3, Sigma-Aldrich) and exposure on Kodak Biomax Light film, or with Gbox. Blot scans are presented cropped in figures and at least one marker position is presented. Uncropped scans are supplied in Supplementary Fig. 10.

### **Rac1 activation assay**

Rac1 activation was quantified using G-LIZA Biochem Kit (luminescence based) from TEBU-BIO as described by the manufacturer. Briefly, cells lysates as described above for immunoblot (1 µg/µl for protein concentration) were incubated in the affinity wells for 30 min at 40°C. Antigen presenting buffer was added for 2 min. Primary and secondary antibodies were incubated for 45 min at room temperature. Intensity was measured by luminometer at 0.3 sec with HRP detection reagent. Cell lyses buffer was used as blank control (RLU = Relative Light Unit).

### **Quantitative reverse transcription-PCR (qRT-PCR)**

Total RNA was isolated using RNeasy Mini Kit 50 (QIAGEN) and applied to reverse transcription using RevertAid™ First Strand cDNA Synthesis Kit (Fermentas). The cDNA was analyzed by qPCR using Quanti Tect SYBR Green PCR Kit (QIAGEN) with 7500 Fast Real-Time PCR System (Applied Biosystems). Reaction parameters were 50°C for 30 min, 95°C for 15 min, followed by 45 cycles of 94°C for 15 sec, 55°C for 30 sec and 72°C for 30 sec. The triplicate mean values were calculated using GAPDH gene transcription as reference for normalization. The primers used are indicated in supplementary Table 1.

### **Image Analysis**

Images obtained by confocal microscopy were analyzed by Icy software for 3D reconstruction. For colocalisation analysis, images were treated by ImageJ software, the plugin “Intensity Correlation Analysis” was used. Colocalisation index was obtained via Pearson’s correlation coefficient (Rr). The values for Pearson’s coefficient range from 1 to -1. A value of 1 represents perfect correlation, -1 represents perfect exclusion and zero represents random localization. For intensity distribution in cells, the plugin “Radial profil” was used. For analysis of a cyst, a circle was defined at the periphery of each cell and the plugin produces a profile plot of normalized integrated intensities around concentric circles as a function of distance from a point in the image, considered here as the centre of the cell. The concentric circles were assembled in three circle bands with equal radius. The intensity in each band was calculated from the total integrated intensities around concentric circles present in the band.

### **Statistical analyses**

All values are expressed as mean ± s.e.m. Comparison of mean values was conducted with unpaired Student's t test. Statistical significance was determined at Asterisk indicates  $P < 0.05$ , double asterisks  $P < 0.001$  and triple asterisks  $P < 0.0001$ .

## Supplementary Material

Refer to Web version on PubMed Central for supplementary material.

## Acknowledgments

We thank Loyal El Khoury for her help with experiments using pharmacological inhibitors of PI3K. This work was supported by Grants from INSERM and Association pour la Recherche sur le Cancer (ARC) to AGD. National Institutes of Health (NIH) grants R01, grants DK074398 and DK091530 to KEM. We acknowledge support of the CNRS Lebanon for supporting AA. AMS is supported by a fellowship from the National Breast Cancer Foundation (NBCF), Australia.

## REFERENCES

1. Bryant DM, Mostov KE. From cells to organs: building polarized tissue. *Nat. Rev. Mol. Cell Biol.* 2008; 9:887–901. [PubMed: 18946477]
2. Nelson WJ. Remodeling epithelial cell organization: transitions between front-rear and apical-basal polarity. *Cold Spring Harb. Perspect. Biol.* 2009; 1:a000513. [PubMed: 20066074]
3. McCaffrey LM, Macara IG. Epithelial organization, cell polarity and tumorigenesis. *Trends Cell Biol.* 2011; 21:727–735. [PubMed: 21782440]
4. Wheelock MJ, Johnson KR. Cadherins as modulators of cellular phenotype. *Annu. Rev. Cell Dev. Biol.* 2003; 19:207–235. [PubMed: 14570569]
5. Nelson CM, Bissell MJ. Of extracellular matrix, scaffolds, and signaling: tissue architecture regulates development, homeostasis, and cancer. *Annu. Rev. Cell Dev. Biol.* 2006; 22:287–309. [PubMed: 16824016]
6. Mellman I, Nelson WJ. Coordinated protein sorting, targeting and distribution in polarized cells. *Nat. Rev. Mol. Cell Biol.* 2008; 9:833–845. [PubMed: 18946473]
7. Li R, Gundersen GG. Beyond polymer polarity: how the cytoskeleton builds a polarized cell. *Nat. Rev. Mol. Cell Biol.* 2008; 9:860–873. [PubMed: 18946475]
8. Goldstein B, Macara IG. The PAR proteins: fundamental players in animal cell polarization. *Dev. Cell.* 2007; 13:609–622. [PubMed: 17981131]
9. Asnacios A, Hamant O. The mechanics behind cell polarity. *Trends Cell Biol.* 2012; 22:584–591. [PubMed: 22980034]
10. Goehring NW, Grill SW. Cell polarity: mechanochemical patterning. *Trends Cell Biol.* 2013; 23:72–80. [PubMed: 23182746]
11. Gibson MC, Perrimon N. Apicobasal polarization: epithelial form and function. *Curr. Opin. Cell Biol.* 2003; 15:747–752. [PubMed: 14644201]
12. Vanhaesebroeck B, Vogt PK, Rommel C. PI3K: from the bench to the clinic and back. *Curr. Top. Microbiol. Immunol.* 2010; 347:1–19. [PubMed: 20549473]
13. Kok K, et al. Regulation of p110delta PI 3-kinase gene expression. *PLoS One.* 2009; 4:e5145. [PubMed: 19357769]
14. Di Paolo G, De Camilli P. Phosphoinositides in cell regulation and membrane dynamics. *Nature.* 2006; 443:651–657. [PubMed: 17035995]
15. Comer FI, Parent CA. Phosphoinositides specify polarity during epithelial organ development. *Cell.* 2007; 128:239–240. [PubMed: 17254962]
16. Gassama-Diagne A, Payrastre B. Phosphoinositide signaling pathways: promising role as builders of epithelial cell polarity. *Int. Rev. Cell Mol. Biol.* 2009; 273:313–343. [PubMed: 19215908]
17. Shewan A, Eastburn DJ, Mostov K. Phosphoinositides in cell architecture. *Cold Spring Harb. Perspect. Biol.* 2011; 3:a004796. [PubMed: 21576256]
18. Krahn MP, Wodarz A. Phosphoinositide lipids and cell polarity: linking the plasma membrane to the cytocortex. *Essays Biochem.* 2012; 53:15–27. [PubMed: 22928505]
19. Backers K, Blero D, Paternotte N, Zhang J, Erneux C. The termination of PI3K signalling by SHIP1 and SHIP2 inositol 5-phosphatases. *Adv. Enzyme Regul.* 2003; 43:15–28. [PubMed: 12791379]



20. Leslie NR, Batty IH, Maccario H, Davidson L, Downes CP. Understanding PTEN regulation: PIP2, polarity and protein stability. *Oncogene*. 2008; 27:5464–5476. [PubMed: 18794881]
21. Gassama-Diagne A, et al. Phosphatidylinositol-3,4,5-trisphosphate regulates the formation of the basolateral plasma membrane in epithelial cells. *Nat. Cell Biol.* 2006; 8:963–970. [PubMed: 16921364]
22. Martin-Belmonte F, et al. PTEN-mediated apical segregation of phosphoinositides controls epithelial morphogenesis through Cdc42. *Cell*. 2007; 128:383–397. [PubMed: 17254974]
23. Awad A, et al. SHIP2 regulates epithelial cell polarity through its lipid product, which binds to Dlg1, a pathway subverted by hepatitis C virus core protein. *Mol. Biol. Cell*. 2013; 24:2171–2185. [PubMed: 23699395]
24. Knight ZA, et al. A pharmacological map of the PI3-K family defines a role for p110alpha in insulin signaling. *Cell*. 2006; 125:733–747. [PubMed: 16647110]
25. Gopal AK, et al. PI3Kδ inhibition by idelalisib in patients with relapsed indolent lymphoma. *N. Engl. J. Med.* 2014; 370:1008–1018. [PubMed: 24450858]
26. Furman RR, et al. Idelalisib and rituximab in relapsed chronic lymphocytic leukemia. *N. Engl. J. Med.* 2014; 370:997–1007. [PubMed: 24450857]
27. Bryant DM, et al. A molecular network for de novo generation of the apical surface and lumen. *Nat. Cell Biol.* 2010; 12:1035–1045. [PubMed: 20890297]
28. Sawyer C, et al. Regulation of breast cancer cell chemotaxis by the phosphoinositide 3-kinase p110delta. *Cancer Res.* 2003; 63:1667–1675. [PubMed: 12670921]
29. Tzenaki N, et al. High levels of p110δ PI3K expression in solid tumor cells suppress PTEN activity, generating cellular sensitivity to p110δ inhibitors through PTEN activation. *FASEB J. Off. Publ. Fed. Am. Soc. Exp. Biol.* 2012; 26:2498–2508.
30. Whitehead MA, Bombardieri M, Pitzalis C, Vanhaesebroeck B. Isoform-selective induction of human p110δ PI3K expression by TNFα: identification of a new and inducible PIK3CD promoter. *Biochem. J.* 2012; 443:857–867. [PubMed: 22375552]
31. O'Brien LE, et al. Rac1 orientates epithelial apical polarity through effects on basolateral laminin assembly. *Nat. Cell Biol.* 2001; 3:831–838. [PubMed: 11533663]
32. Bissell MJ, Radisky DC, Rizki A, Weaver VM, Petersen OW. The organizing principle: microenvironmental influences in the normal and malignant breast. *Differ. Res. Biol. Divers.* 2002; 70:537–546.
33. Yu W, et al. Beta1-integrin orients epithelial polarity via Rac1 and laminin. *Mol. Biol. Cell.* 2005; 16:433–445. [PubMed: 15574881]
34. Monteleon CL, et al. Establishing epithelial glandular polarity: interlinked roles for ARF6, Rac1, and the matrix microenvironment. *Mol. Biol. Cell.* 2012; 23:4495–4505. [PubMed: 23051733]
35. Germena G, Hirsch E. PI3Ks and small GTPases in neutrophil migration: two sides of the same coin. *Mol. Immunol.* 2013; 55:83–86. [PubMed: 23137593]
36. Liu L, et al. Phosphorylation and inactivation of glycogen synthase kinase-3 by soluble kit ligand in mouse oocytes during early follicular development. *J. Mol. Endocrinol.* 2007; 38:137–146. [PubMed: 17242176]
37. Hohenester E, Yurchenco PD. Laminins in basement membrane assembly. *Cell Adhes. Migr.* 2013; 7:56–63.
38. Cantley LC. The phosphoinositide 3-kinase pathway. *Science*. 2002; 296:1655–1657. [PubMed: 12040186]
39. Cain RJ, Vanhaesebroeck B, Ridley AJ. The PI3K p110alpha isoform regulates endothelial adherens junctions via Pyk2 and Rac1. *J. Cell Biol.* 2010; 188:863–876. [PubMed: 20308428]
40. Akhtar N, Streuli CH. An integrin-ILK-microtubule network orients cell polarity and lumen formation in glandular epithelium. *Nat. Cell Biol.* 2013; 15:17–27. [PubMed: 23263281]
41. Humphries JD, Byron A, Humphries MJ. Integrin ligands at a glance. *J. Cell Sci.* 2006; 119:3901–3903. [PubMed: 16988024]
42. Campbell ID, Humphries MJ. Integrin structure, activation, and interactions. *Cold Spring Harb. Perspect. Biol.* 2011; 3

43. Lee JL, Streuli CH. Integrins and epithelial cell polarity. *J. Cell Sci.* 2014; 127:3217–3225. [PubMed: 24994933]
44. Boudreau NJ, Jones PL. Extracellular matrix and integrin signalling: the shape of things to come. *Biochem. J.* 1999; 339 ( Pt 3):481–488. [PubMed: 10215583]
45. Zaidel-Bar R, Milo R, Kam Z, Geiger B. A paxillin tyrosine phosphorylation switch regulates the assembly and form of cell-matrix adhesions. *J. Cell Sci.* 2007; 120:137–148. [PubMed: 17164291]
46. Ervasti JM, Campbell KP. Membrane organization of the dystrophin-glycoprotein complex. *Cell.* 1991; 66:1121–1131. [PubMed: 1913804]
47. Barresi R, Campbell KP. Dystroglycan: from biosynthesis to pathogenesis of human disease. *J. Cell Sci.* 2006; 119:199–207. [PubMed: 16410545]
48. Weir ML, et al. Dystroglycan loss disrupts polarity and beta-casein induction in mammary epithelial cells by perturbing laminin anchoring. *J. Cell Sci.* 2006; 119:4047–4058. [PubMed: 16968749]
49. Masuda-Hirata M, et al. Intracellular polarity protein PAR-1 regulates extracellular laminin assembly by regulating the dystroglycan complex. *Genes Cells Devoted Mol. Cell. Mech.* 2009; 14:835–850.
50. Zhang L, Seo-Mayer P, Caplan MJ. Dystroglycan and AMP kinase: polarity's protectors when the power goes out. *Dev. Cell.* 2009; 16:1–2. [PubMed: 19154710]
51. Bello V, Sirour C, Moreau N, Denker E, Darribère T. A function for dystroglycan in pronephros development in *Xenopus laevis*. *Dev. Biol.* 2008; 317:106–120. [PubMed: 18377887]
52. Wymann MP, Marone R. Phosphoinositide 3-kinase in disease: timing, location, and scaffolding. *Curr. Opin. Cell Biol.* 2005; 17:141–149. [PubMed: 15780590]
53. Clayton E, et al. A crucial role for the p110delta subunit of phosphatidylinositol 3-kinase in B cell development and activation. *J. Exp. Med.* 2002; 196:753–763. [PubMed: 12235209]
54. Okkenhaug K, et al. Impaired B and T cell antigen receptor signaling in p110delta PI 3-kinase mutant mice. *Science.* 2002; 297:1031–1034. [PubMed: 12130661]
55. Rommel C, Camps M, Ji H. PI3K delta and PI3K gamma: partners in crime in inflammation in rheumatoid arthritis and beyond? *Nat. Rev. Immunol.* 2007; 7:191–201. [PubMed: 17290298]
56. Rodon J, Dienstmann R, Serra V, Tabernero J. Development of PI3K inhibitors: lessons learned from early clinical trials. *Nat. Rev. Clin. Oncol.* 2013; 10:143–153. [PubMed: 23400000]
57. Vanhaesebroeck B, Khwaja A. PI3Kδ inhibition hits a sensitive spot in B cell malignancies. *Cancer Cell.* 2014; 25:269–271. [PubMed: 24651009]
58. Knight ZA, Shokat KM. Chemically targeting the PI3K family. *Biochem. Soc. Trans.* 2007; 35:245–249. [PubMed: 17371250]
59. Vanhaesebroeck B, Stephens L, Hawkins P. PI3K signalling: the path to discovery and understanding. *Nat. Rev. Mol. Cell Biol.* 2012; 13:195–203. [PubMed: 22358332]
60. Shugg RPP, et al. Effects of Isoform-Selective Phosphatidylinositol 3-Kinase Inhibitors on Osteoclasts: ACTIONS ON CYTOSKELETAL ORGANIZATION, SURVIVAL AND RESORPTION. *J. Biol. Chem.* 2013 doi:10.1074/jbc.M113.507525.
61. Juvin V, et al. Signaling via Class IA Phosphoinositide 3-Kinases (PI3K) in Human, Breast-Derived Cell Lines. *PloS One.* 2013; 8:e75045. [PubMed: 24124465]
62. Berndt A, et al. The p110 delta structure: mechanisms for selectivity and potency of new PI(3)K inhibitors. *Nat. Chem. Biol.* 2010; 6:117–124. [PubMed: 20081827]
63. Tzenaki N, Papakonstanti EA. p110δ PI3 kinase pathway: emerging roles in cancer. *Front. Oncol.* 2013; 3:40. [PubMed: 23459844]
64. Zeller KS, et al. PI3-kinase p110α mediates β1 integrin-induced Akt activation and membrane protrusion during cell attachment and initial spreading. *Cell. Signal.* 2010; 22:1838–1848. [PubMed: 20667469]
65. Zamir E, Geiger B. Molecular complexity and dynamics of cell-matrix adhesions. *J. Cell Sci.* 2001; 114:3583–3590. [PubMed: 11707510]
66. Schoenwaelder SM, et al. Phosphoinositide 3-kinase p110 beta regulates integrin alpha IIb beta 3 avidity and the cellular transmission of contractile forces. *J. Biol. Chem.* 2010; 285:2886–2896. [PubMed: 19940148]

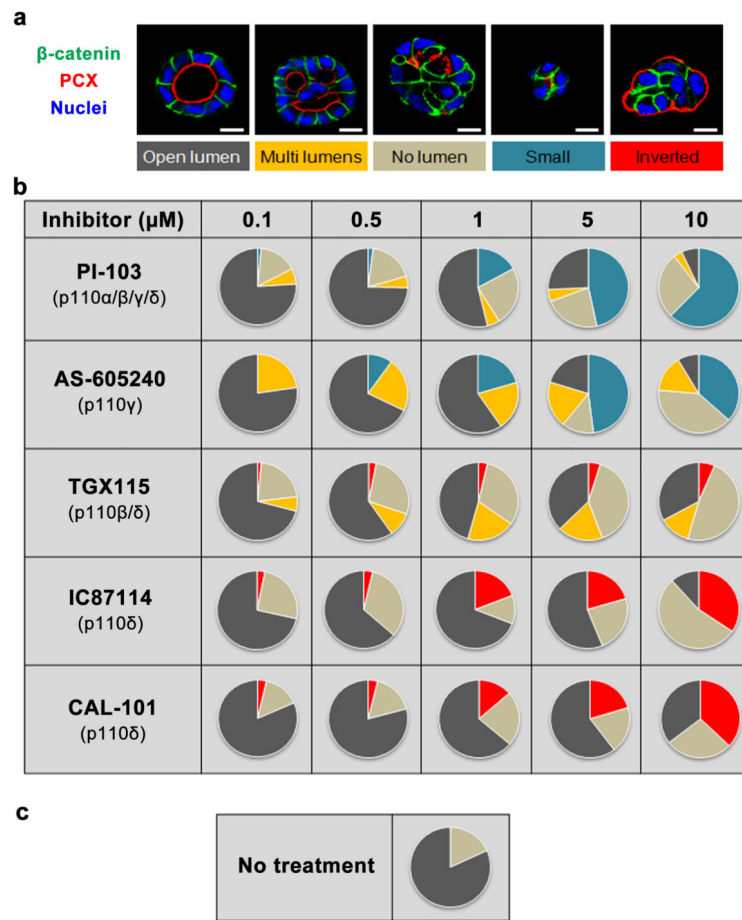
67. Fritsch R, et al. RAS and RHO families of GTPases directly regulate distinct phosphoinositide 3-kinase isoforms. *Cell*. 2013; 153:1050–1063. [PubMed: 23706742]
68. Constantin B. Dystrophin complex functions as a scaffold for signalling proteins. *Biochim. Biophys. Acta*. 2013 doi:10.1016/j.bbame.2013.08.023.
69. Lu P, Takai K, Weaver VM, Werb Z. Extracellular matrix degradation and remodeling in development and disease. *Cold Spring Harb. Perspect. Biol.* 2011; 3

Author Manuscript

Author Manuscript

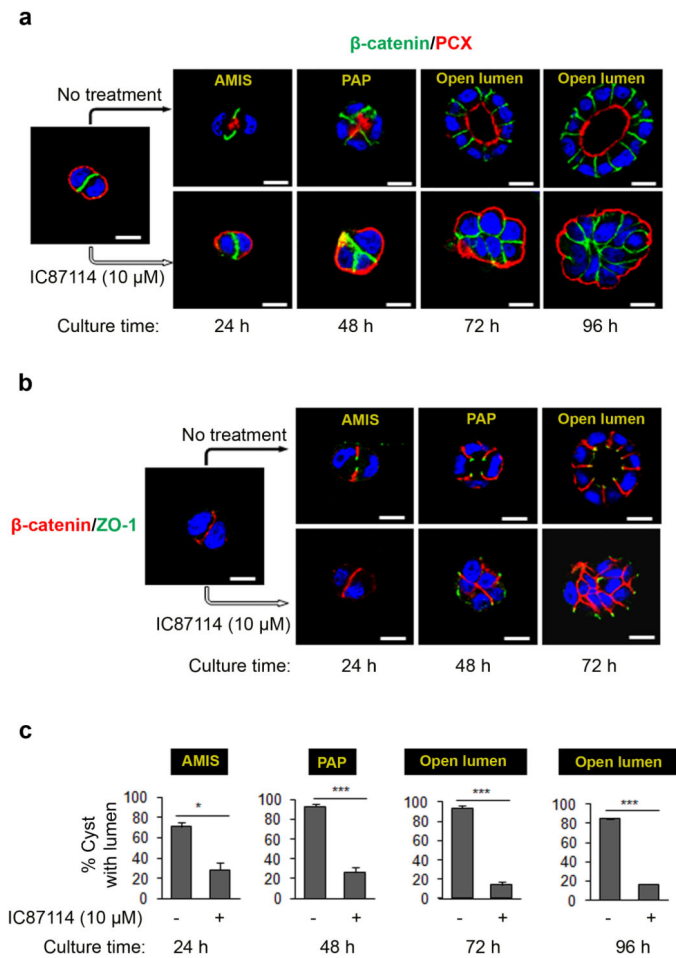
Author Manuscript

Author Manuscript



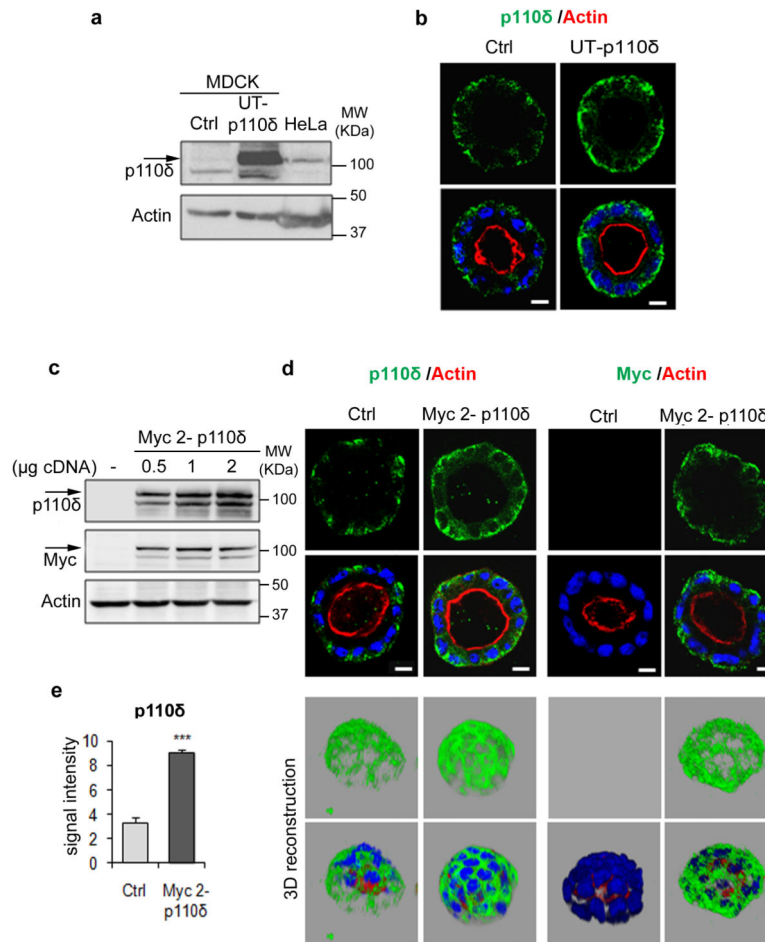
### Figure 1. p110 $\delta$ activity is required for polarity in MDCK cysts

(a) MDCK cells, plated on Matrigel to form cysts, were treated 24 h after plating with different p110 inhibitors: PI-103 (inhibitor of p110 $\alpha$ ,  $\beta$ ,  $\gamma$  and  $\delta$ ), AS-605240 (inhibitor of p110 $\gamma$ ), TGX115 (inhibitor of p110 $\beta$  and  $\delta$ ), IC87114 and CAL-101 (inhibitors of p110 $\delta$ ). Inhibitors were used at different concentrations (0-10  $\mu$ M). Cysts were grown for another 72 h with a daily change of the medium containing inhibitor. Cysts presented different phenotypes (Normal lumen, multi lumen, no lumen, small cysts with no lumen, and inverted polarity). These phenotypes were identified by staining  $\beta$ -catenin in green, podocalyxin (PCX) in red and Hoechst (blue) as indicated on the pictures. A confocal section through the middle of cyst is shown. The scale bar represents 10  $\mu$ m. (b) The table shows a schematic representation of phenotype at different concentration. Color for each phenotype in pie is corresponding to the color below pictures in (a). (c) The same representation as in (b) for no treated cells.



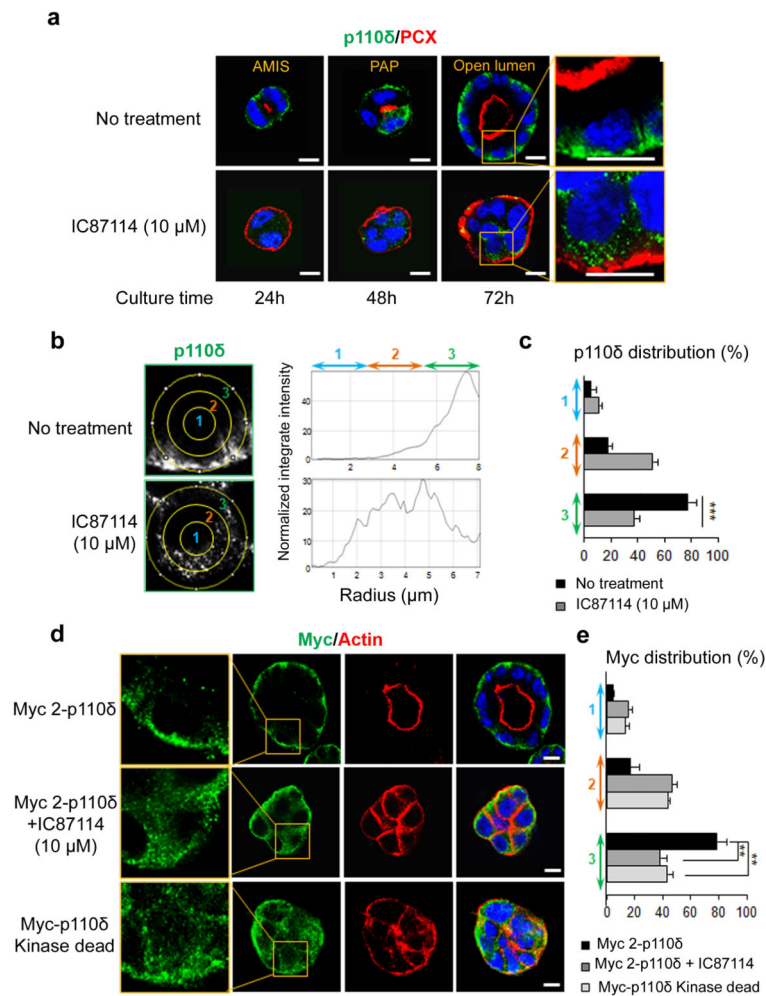
**Figure 2. p110 $\delta$  activity is required for lumen initiation in MDCK cysts**

(a) Time course analysis of polarity and lumen formation in MDCK cells, treated or not with 10  $\mu$ M of IC87114 and plated on Matrigel to form cysts, fixed and stained after 24, 48, 72 and 96 h of culture, corresponding to different stages of lumen formation: AMIS = Apical Membrane Initiation Site (AMIS). PAP = Pre-Apical Patch and open lumen. Cells were stained for  $\beta$ -catenin (green) and PCX (red) and a single confocal section through the middle of cyst is shown. The scale bar represents 10  $\mu$ m. (b) Cells were grown as in (a) and analyzed after 24, 48, and 72 h of culture and stained for  $\beta$ -catenin (red) and ZO-1 (green) and a single confocal section through the middle of cyst is shown. The scale bar represents 10  $\mu$ m. (c) Percentage of MDCK cysts with AMIS, PAP or open lumen from 3 independent experiments were presented in histograms. values are expressed as mean  $\pm$  s.e.m. Asterisk indicates student t test  $P < 0.05$ , triple asterisks indicate  $P < 0.0001$ .



**Figure 3. p110δ localization at the basolateral membrane of MDCK cysts**

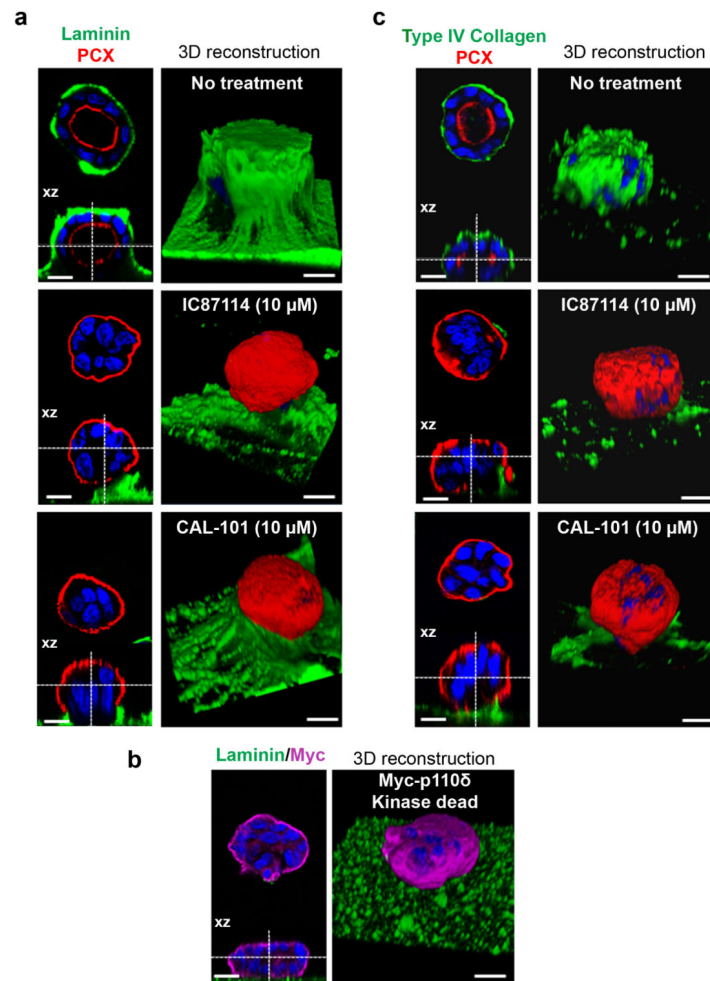
(a) Immunoblot analysis of p110δ in MDCK transfected or not with 1 μg of untagged p110δ cDNAs (UT-p110δ), using p110δ-specific antibody (sc7176). HeLa cells are positive control for p110δ and actin was used as a loading control. (b) MDCK cells in (a) were grown in Matrigel to form cysts and then stained for p110δ (green) using p110δ-specific antibody (ab32401), actin (red) and Hoechst (blue) as indicated on the pictures. Single confocal section through the middle of cyst is shown. The scale bar represents 10 μm. (c) Immunoblot analysis of MDCK transfected or not with different amounts (0.5, 1 and 2 μg) of Myc tagged-p110δ cDNA (Myc 2-p110δ) and revealed with p110δ (sc7176) and myc tag antibodies. Actin was used as a loading control. (d) Cells in (c) were grown in Matrigel to form cysts and then stained for p110δ using p110δ-specific antibody (ab32401) or Myc (green), actin (red) and Hoechst (blue) as indicated on the pictures. Single confocal section through the middle of a cyst is shown. The scale bar represents 10 μm. A 3D reconstruction from all XZ sections is presented in the bottom panel. (e) Quantification of p110δ intensity by ImageJ from 20 cysts from 3 independent experiments, values are expressed as mean ± s.e.m, triple asterisks indicate student t test  $P < 0.0001$ .



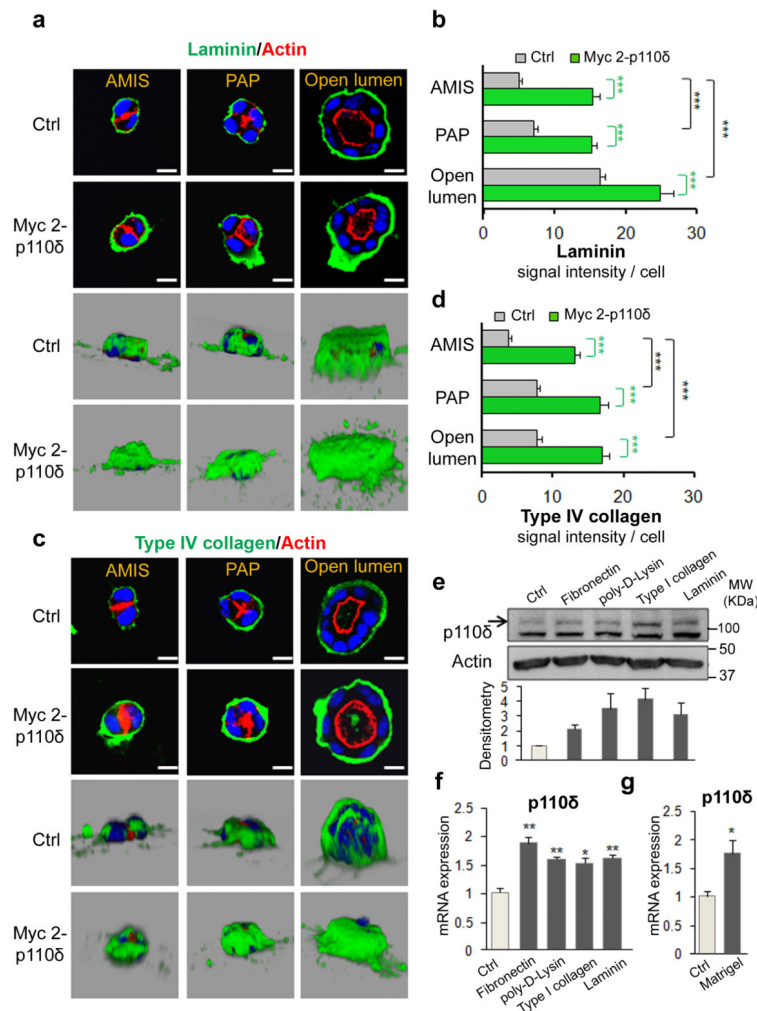
**Figure 4. p110 $\delta$  localization at the basolateral membrane of MDCK cysts depends on its activity**  
**(a)** Time course analysis of p110 $\delta$  in MDCK cells grown on Matrigel to form cysts and treated or not with IC87114 at 10  $\mu$ M. Cysts were fixed and stained after 24, 48 and 72 h of culture. Immunostaining was performed for p110 $\delta$  (green) using p110 $\delta$ -specific antibody (ab32401), PCX (red) and Hoechst (blue) as indicated on the pictures. Single confocal section through the middle of cyst is shown. The scale bar represents 10  $\mu$ m. A higher magnification of the data from 72 h of culture is presented in the right column. **(b)** The distribution of p110 $\delta$  signal was analyzed by ImageJ software in an individual cell from a cyst. A circle was defined at the periphery of each cell and the plugin produces a profile plot of normalized integrated intensities around concentric circles as a function of distance from a point in the image, considered here as the centre of the cell. The circle was divided in three bands (1, 2, 3) with equal radius. **(c)** The total intensity in each band was calculated from 20 cells and is represented as a histogram. values are expressed as mean  $\pm$  s.e.m Triple asterisks indicate student t test  $P < 0.0001$ . **(d)** MDCK cells transfected with 1  $\mu$ g of Myc 2-p110 $\delta$  cDNA were treated or not with 10  $\mu$ M of IC87114. MDCK cells were also transfected with 1  $\mu$ g of Myc-p110 kinase dead (KD) cDNA. Immunostaining was performed for Myc (green), actin (red) and Hoechst (blue) as indicated on the pictures. Single confocal section through the middle of the cyst is shown. A higher magnification of the data is presented in the right

column. The scale bar represents 10  $\mu\text{m}$ . **(e)** The distribution of Myc signal was analyzed by ImageJ software in an individual cell from a cyst as in **(b)**, and total intensity in each band calculated from 20 cells was represented as histogram. values are expressed as mean  $\pm$  s.e.m . Double asterisks indicate student t test  $P < 0.001$ .





**Figure 5. Laminin and type IV collagen assembly is dependent on p110 $\delta$  activity**  
**(a)** MDCK cells treated or not with 10  $\mu$ M of p110 $\delta$  inhibitors (IC87114 or CAL-101) were grown on matrigel for 4 days to form cysts and then fixed and stained with laminin (green), PCX (red) and Hoechst (blue) as indicated on the pictures. A confocal section through the middle of the cyst is shown and the XZ section is presented below each panel. The scale bar represents 10  $\mu$ m. 3D reconstruction from all XZ sections is presented in the right column.  
**(b)** MDCK cells transfected or not with 1  $\mu$ g of Myc-p110 $\delta$  KD were grown on matrigel for 4 days to form cysts and then fixed and stained with laminin (green), Myc (purple) and Hoechst (blue) as indicated on the pictures. A confocal section through the middle of cyst is shown and XZ section is presented below each panel. The scale bar represents 10  $\mu$ m. 3D reconstruction from all XZ sections is presented in the right column. **(c)** cells treated as in **(a)** stained with type IV collagen (green), PCX (red) and Hoechst (blue) as indicated on the pictures. A confocal section through the middle of the cyst is shown and the XZ section is presented below each panel. The scale bar represents 10  $\mu$ m. 3D reconstruction from all XZ sections is presented in the right column.



### Figure 6. ECM regulates p110δ expression

(a) MDCK cells transfected or not with 1  $\mu$ g of Myc 2-p110 $\delta$  were grown on matrigel and fixed after 24 h for AMIS, after 48 h for PAP and after 72 h for open lumen. Cells were stained with laminin (green), actin (red) and Hoechst (blue) as indicated on the pictures. A confocal section through the middle of cyst is shown. The scale bar represents 10  $\mu$ m. 3D reconstruction from all XZ sections is presented in a grey background. Laminin signal intensity of individual cell is analyzed with ImageJ software for 30 cells and represented as histogram in (b). Values are expressed as mean  $\pm$  s.e.m Triple asterisks indicate student t test  $P < 0.0001$ . (c) and (d) same as (a) and (b) respectively for type IV collagen staining (green) and signal intensity. (e) MDCK cells grown for 24h on fibronectin, poly-D-lysine, collagen or laminin coated coverglasses and non coated coverglass (ctrl) were analyzed by immunoblot for p110 $\delta$  expression using p110 $\delta$ -specific antibody (sc7176). Actin was used as a loading control. Relative densitometry analysis of p110 $\delta$  from 3 different experiments was analyzed and presented in histograms below. Values are expressed as mean  $\pm$  s.e.m (f) Total RNA from cells in (e) were analyzed by qRT-PCR for p110 $\delta$  expression, and normalized to GAPDH. Values from three independent experiments are expressed as mean  $\pm$  s.e.m asterisk indicates student t test  $P < 0.05$ . Double asterisk  $P < 0.001$ . (g) Total RNA from

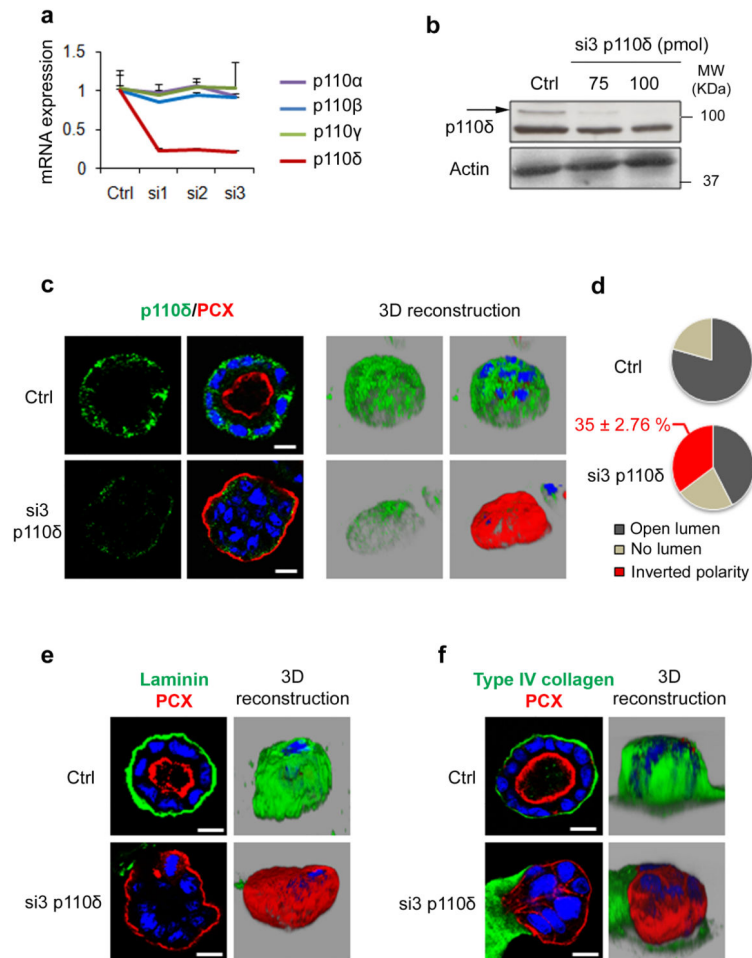
cells grown or not on Matrigel for 4 days were analyzed by qRT-PCR for p110 $\delta$  expression, and normalized to GAPDH (see Methods). Values from three independent experiments are expressed as mean  $\pm$  s.e.m asterisk indicates student t test  $P < 0.05$ .

Author Manuscript

Author Manuscript

Author Manuscript

Author Manuscript



**Figure 7. p110δ knock down alters laminin and type IV collagen assembly and leads to inverted polarized cyst formation**

(a) MDCK cells were transfected with 100 pmol of three different p110δ-specific siRNA (si1, si2 and si3) for 48 h. Total RNA was analyzed by qRT-PCR for p110δ, p110α, p110β and p110γ and normalized to GAPDH (see Methods). Control (Ctrl) corresponds to cells treated with transfection reagents only. values are expressed as mean ± s.e.m of four triplicate independent experiments. (b) Immunoblot analysis of p110δ using p110δ-specific antibody (sc7176), in MDCK cells transfected or not with 75 and 100 pmol of p110δ siRNA. Actin was used as a loading control. (c) MDCK transfected as in (a) with si3 or ctrl cells were grown in Matrigel for 96 h to form cysts and then stained for p110δ (green) using p110δ-specific antibody (ab32401), PCX (red) and Hoechst (blue). Single confocal section through the middle of the cyst is shown. The scale bar represents 10 μm. 3D reconstruction from all XZ sections is presented in the right column in grey background. (d) Quantification of open lumen, no lumen and inverted polarized cysts from 3 independent experiments was presented in pie. The percentage ± s.e.m. of inverted polarized cyst is indicated above the pie. (e) MDCK cysts in (c) were stained for laminin (green), PCX (red) and Hoechst (blue). A confocal section through the middle of cyst is shown. The scale bar represents 10 μm. 3D reconstruction from all XZ sections is presented in the right column in grey background. (f) MDCK cells in (c) were stained for type IV collagen (green), PCX (red) and Hoechst (blue).

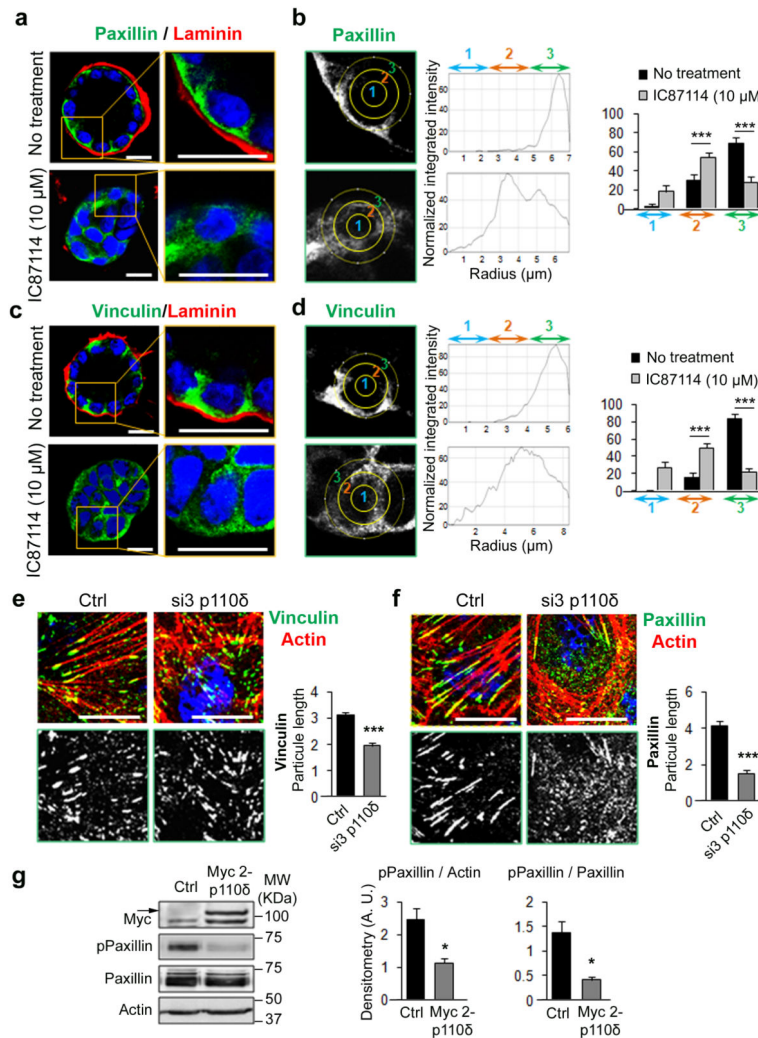
A confocal section through the middle of cyst is shown. The scale bar represents 10  $\mu\text{m}$ . 3D reconstruction from all XZ sections is presented in the right column in grey background.

Author Manuscript

Author Manuscript

Author Manuscript

Author Manuscript



**Figure 8. p110 $\delta$  regulates the membrane localization of paxillin and vinculin and focal adhesion organization**

(a) MDCK cells treated or not with 10  $\mu$ M of IC87114 were grown on Matrigel for 96h to form cysts, and stained for paxillin (a) and vinculin (c) (green), laminin (red) and Hoechst (blue). A confocal section through the middle of cyst is shown. The scale bar represents 10  $\mu$ m. A higher magnification of the data is presented in the right column. (b) (d) The distribution of paxillin (b) and vinculin (d) signal was analyzed by ImageJ software in an individual cell from a cyst as in Fig. 4b. The total intensity in each band was calculated from 20 cells was represented as histogram. Values are expressed as mean  $\pm$  s.e.m Triple asterisks indicate student t test  $P < 0.0001$ . (e) MDCK cells transfected with 100 pmol of p110 $\delta$ -specific siRNA (si3) or control (Ctrl) cells were grown for 48 h on coverglasses and stained for vinculin (green), actin (red) and Hoechst (blue) as indicated on the figures. The scale bar represents 10  $\mu$ m. Vinculin staining alone is presented in black and white in the bottom panels. Vinculin particle length is measured with ImageJ for 30 cells from 3 independent experiments and presented in histogram on the right part of the figure. Values are expressed as mean  $\pm$  s.e.m and triple asterisks indicate student t test  $p < 0.0001$ . (f) Same as in (e), for paxillin staining and analysis. (g) Paxillin and phosphorylated paxillin (pPaxillin) were

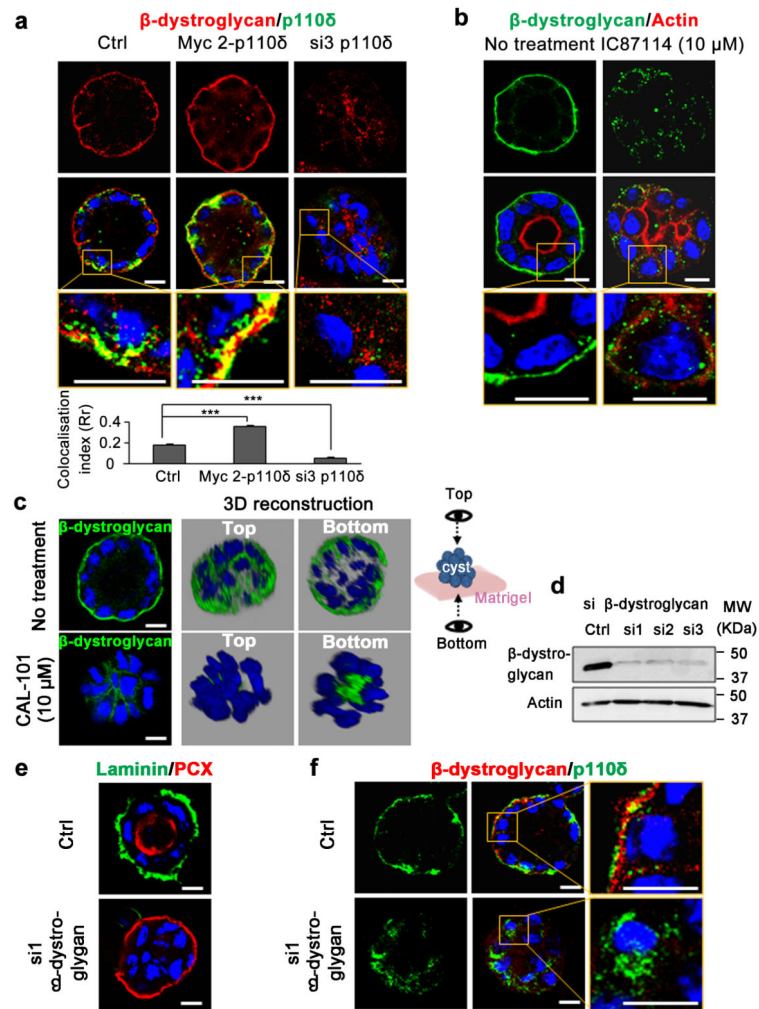
analyzed by immunoblot on lysates from cells transfected or not with 1  $\mu$ g of Myc2-p110 $\delta$ . Actin was used as loading control. Densitometry analysis of the ratio of pPaxillin to actin and pPaxillin to total Paxillin from 3 different experiments was analyzed and presented in histograms. Values are expressed as mean  $\pm$  s.e.m and asterisks indicate student t test  $P < 0.05$ .

Author Manuscript

Author Manuscript

Author Manuscript

Author Manuscript



### Figure 9. p110 $\delta$ is required for the membrane localization of $\beta$ -dystroglycan

(a) MDCK cells transfected with 1  $\mu$ g of Myc 2-p110 $\delta$  cDNA or 100 pmol of si3 were grown to form cysts, stained for  $\beta$ -dystroglycan (red), p110 $\delta$  (green) using p110 $\delta$ -specific antibody (ab32401), and Hoechst (blue) as indicated on the figures. Confocal section through the middle of a cyst is shown for  $\beta$ -dystroglycan (red) and the merged picture with p110 $\delta$ . A higher magnification of the merged picture is represented in the bottom rows. The scale bar represents 10  $\mu$ m. Data (mean  $\pm$  s.e.m.) for measure of colocalisation calculated from 15 cysts using ImageJ software as described in Methods section were indicated in histogram below the panels. (b) MDCK cysts, treated or not with 10  $\mu$ M of IC87114 for 72 h were stained for  $\beta$ -dystroglycan (green), actin (red) and Hoechst (blue) as indicated on the pictures. Confocal section through the middle of cyst is shown. A higher magnification is represented in the bottom row. The scale bar represents 10  $\mu$ m. (c) MDCK cells, treated or not with 10  $\mu$ M of CAL-101 for 72 h were grown on Matrigel to form cyst and stained for  $\beta$ -dystroglycan (green) and Hoechst (blue). Confocal section through the middle of cyst is shown, and 3D reconstruction from all XZ sections is presented in grey background. Two sides of view (top and bottom) were shown as illustrated at right. (d) Immunoblot of  $\beta$ -dystroglycan in MDCK cells transfected with 100 pmol of three different  $\beta$ -dystroglycan



specific siRNA (si1, si2 and si3) and control cells (Ctrl). Actin served as a loading control. **(e)** MDCK cells transfected for 24 h with si1  $\beta$ -dystroglycan as in **(d)** were grown in Matrigel for 96 h to form cysts and then stained for laminin (green), PCX (red) and Hoechst (blue). Single confocal section through the middle of cyst is shown. **(f)** MDCK cysts in **(e)** were stained for  $\beta$ -dystroglycan (red), p110 $\delta$  (green) using p110 $\delta$ -specific antibody (ab32401), and Hoechst (blue). Single confocal section through the middle of cyst is shown. A higher magnification is presented in the right panels. The scale bar represents 10  $\mu$ m.