

**UCLA**  
**Contemporary Music Score Collection**

**Title**

Eulogy

**Permalink**

<https://escholarship.org/uc/item/1rn0z40k>

**Author**

Ward, Julian

**Publication Date**

2020



**Julian Ward**

***Eulogy***

**-For Choir and Brass Quintet -**



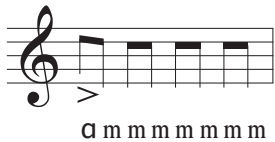


# Eulogy Key

## Vocal



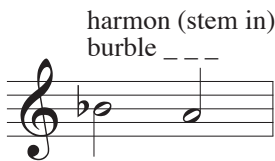
This is a pitch bend.



This indicates to make sounds that are significantly more airy than pitched. The "ɑ" is an accented open mouthed ah sound and the "m" is almost a hum.

Note: Lyrics outside of the text are written in IPA.

## Brass



This indicates to have a harmon mute in the bell of the instrument and then to put your hand on the end to create a sort of vibrato effect. The gesture should grow and die in frequency over its duration.



This is a flutter tongue.

Note: In the music there are written indications for when mutes are used and dropped.

## Eulogy

I hope you will understand,  
When I can't come back again,

I know you will have the strength when the time comes,  
To be yourself at all costs,  
Ah, to shed this burden  
These lies will at last be lost,

but,

What are you supposed to do,  
When life has come and gone?  
When you no longer can feel,  
The things that you have done?

Lilac lights paint a pale horizon,  
Near enough to touch yet so far away,  
To see those light blue blossoms once more,  
Feel how on the gentle wind they'd sway,

I was hoping that I'd finally won,  
When I mistook that light for the rising sun,  
The truth!  
Dawned on me with great pain and,  
I knew that I was there again,

Lilac lights paint a pale horizon,  
Near enough to touch yet so far away,  
To see those light blue blossoms once more,  
Feel how on the gentle wind they'd sway,

- Julian Ward -















25

B $\flat$  Tpt. 1

B $\flat$  Tpt. 2

Hn.

Tbn.

Tuba

Detailed description: This block contains the musical notation for five brass instruments: B $\flat$  Tpt. 1, B $\flat$  Tpt. 2, Hn., Tbn., and Tuba. Measures 25 through 28 are shown. In measures 25-28, the first four instruments (B $\flat$  Tpt. 1, B $\flat$  Tpt. 2, Hn., Tbn.) have whole rests. The Tuba part begins in measure 25 with a melodic line consisting of eighth and sixteenth notes, continuing through measure 28.

25

S

A

T

B

Detailed description: This block contains the musical notation for four vocal parts: Soprano (S), Alto (A), Tenor (T), and Bass (B). Measures 25 through 28 are shown. The Soprano and Alto parts have a melodic line with lyrics "du" followed by a horizontal line. The Tenor part has a rhythmic accompaniment of eighth notes with lyrics "a m m m m m m m". The Bass part has a rhythmic accompaniment of eighth notes with lyrics "du du du du du du du du".











45

B $\flat$  Tpt. 1

B $\flat$  Tpt. 2

Hn.

Tbn.

Tuba

45

S  
du \_\_\_\_\_

A  
du \_\_\_\_\_

T  
α m m m m m m m

B  
du du du du du du du du

senza

*p*

*mf*

*mp*

49

B $\flat$  Tpt. 1

B $\flat$  Tpt. 2

Hn.

Tbn.

Tuba

49

S

A

T

B

du du du du du du du du du du du du

senza vib.

vib. molto vib. senza vib.

*f* *p*

*p*

*ppp* *ppp*

rit.-----

53

B $\flat$  Tpt. 1 *senza vib.*----- *molto vib.*-----  
*p* ----- *f*

B $\flat$  Tpt. 2 *under voices*  
*mf* *3*

Hn. *molto vib.*----- *senza vib.*-----  
*f* ----- *p*

Tbn. *under voices*  
*mf* *3* *3* *3* *3* *3* *3* *3* *3*  
*p* ----- *f*

Tuba

53

S

A

T *mf*  
*mf* *3*  
 I hope you \_\_\_\_\_ will un - der - stand When I

B *mf* *3* *3* *3*  
 I hope you will un - der - stand \_\_\_\_\_ When I

♩ = 80

----- senza vib.

59 ♩ = 80

senza vib.

57

B♭ Tpt. 1 *p*

B♭ Tpt. 2 *mf* straight mute

Hn. *mf* stopped + + + +

Tbn. *p* senza vib.

Tuba *mf*

57

S

A

T *mp*  
8 can't go back a - gain

B *mp*  
can't go back a - gain

61

molto vib. senza vib.

B $\flat$  Tpt. 1

B $\flat$  Tpt. 2

Hn.

Tbn.

Tuba

S

A

T

B

*f* *p* *f* *p* *f* *p* *f* *p* *mp* *mp*

senza vib. molto vib. senza vib.

know know

8

Detailed description: This page of a musical score for 'Eulogy' features a brass ensemble and vocalists. The brass parts include B $\flat$  Trumpets 1 and 2, Horns, Trombones, and Tubas. The vocal parts are Soprano (S), Alto (A), Tenor (T), and Bass (B). The score begins at measure 61. The B $\flat$  Tpt. 1 part has a melodic line with dynamics *f* and *p*, and vibrato markings 'molto vib.' and 'senza vib.'. The B $\flat$  Tpt. 2 part has a melodic line with dynamic *f*. The Horn part has a melodic line with dynamic *f* and two '+' symbols above the first two notes. The Trombone part has a melodic line with dynamics *p*, *f*, and *p*, and vibrato markings 'senza vib.', 'molto vib.', and 'senza vib.'. The Tuba part has a melodic line with dynamic *f*. The Soprano and Alto parts have melodic lines with dynamics *f* and *p*. The Tenor and Bass parts have melodic lines with dynamic *mp* and the word 'know' written below the notes. The Tenor part has an '8' below the first note. The Bass part has an '8' below the first note. The score is written in a common time signature.

rit.-----

65

B $\flat$  Tpt. 1

B $\flat$  Tpt. 2

Hn.

Tbn.

Tuba

open

*mf*

*mf*

65

S

A

T

B

*mf* *p*

you will have \_\_\_ the strength when the time comes \_\_\_\_\_

*mf* *p*

you will have the strength when the time \_\_\_\_\_ comes

3 3

----- ♩ = 60 ♩ = 80 rit.----- a tempo

69

B♭ Tpt. 1

B♭ Tpt. 2

Hn.

Tbn.

Tuba

69

S

A

T

B

ah \_\_\_\_\_

ah \_\_\_\_\_

*p* solo *an introspective whisper*

To be your-self at all \_\_\_ cost\_\_\_

75

B $\flat$  Tpt. 1

B $\flat$  Tpt. 2

Hn.

Tbn.

Tuba

under voices

*p*

75

S

A

T

8

*p*

Ah, \_\_\_\_\_

B

*mp* *p* *pp*

3 3

Ah, \_\_\_\_\_ to shed this bur - den These lies \_\_\_\_\_ will at last be lost \_\_\_\_\_



79 under voices

B $\flat$  Tpt. 1

B $\flat$  Tpt. 2

Hn.

Tbn.

Tuba

79

S

A

T

B

— to shed this bur - den — These lies will at last —

*p*

8 Ah, — to shed this bur - den —

82

B $\flat$  Tpt. 1

B $\flat$  Tpt. 2

Hn.

Tbn.

Tuba

harmon (stem in)

*p*

harmon (stem in) burble

*p*

under voices

*p*

82

S

A

T

B

to shed

be lost

to shed

8

Ah, to shed this bur - den

a2

These lies will at last be lost to shed this

under voices

85

B $\flat$  Tpt. 1

B $\flat$  Tpt. 2

Hn.

Tbn.

Tuba

*p*

*mf*

*mf*

85

S

bur - den \_\_\_\_\_ and at last \_\_\_\_\_ be lost \_\_\_\_\_

*mf*

A

bur - den \_\_\_\_\_

*mf*

*mp*

T

the li - i - ies \_\_\_\_\_ will at last \_\_\_\_\_ be lost \_\_\_\_\_ but,

*mf*

B

bur - den \_\_\_\_\_ at last \_\_\_\_\_ be lost

88

B $\flat$  Tpt. 1

B $\flat$  Tpt. 2

Hn.

Tbn.

Tuba

88

S

A

T

B

*solo slightly more agitated*

— What are you sup - posed to do when life — has come and gone —

rit.----- a tempo  
straight mute

92

B $\flat$  Tpt. 1

under voices

B $\flat$  Tpt. 2

*p*

under voices

harmon (stem in)

*mf*

stopped

Hn.

*p*

harmon (stem in) burble-----

harmon (stem out)

Tbn.

*p*

Tuba

*f*

92 *mp*

S

When you no long<sup>3</sup>-er can feel the things that you have done

*mp*

A

When you no long<sup>3</sup>-er can feel the things that you have done

a2

8

T

When you no long - ger can feel the things that you have done

*mp*

B

When you no long - ger can feel the things that you have done

98 ♩ = 80

96

B♭ Tpt. 1

B♭ Tpt. 2

Hn.

Tbn.

Tuba

S

A

T

B

*ff*

*ff*

*ff*

*ff*

*ff*

*ff*

*ff*

*mf*

*mf*

*ff* > *p*

*ff* > *p*

no mute

*mf*

du du du du du du du du du du du du du du du du du

*mf* lacking pitch

a m m m m m m m a m m m m m m m











115 ♩ = 80

B♭ Tpt. 1

B♭ Tpt. 2

Hn.

Tbn.

Tuba

115

S

A

T

B

*p*

*p*

*f* *p*

*p sub.*

u u

dAt dAt dAt da da da dAt dAt da

dreams u u

i e i e i e i e i e i e i e i e i

119

B $\flat$  Tpt. 1

B $\flat$  Tpt. 2

Hn.

Tbn.

Tuba

harmon (stem in)

harmon (stem in) burble

119

S

A

T

B

a

a

da da da dAt dAt dAt da dAt dAt dAt dAt da dAt dAt dAt dAt da dAt dAt da\_

a

a

122

B $\flat$  Tpt. 1

B $\flat$  Tpt. 2

Hn.

Tbn.

Tuba

harmon (stem in)

*mf*

half-valve gliss.

*mf*

harmon (stem in) burble

harmon (stem in) burble

*mf*

122 *mf*

S

*mf*

A

*mf*

T

*mf*

B

u

u

u

dAt dAt dAt da da da da dAt dAt da da da da dAt dAt dAt da da dAt dAt dAt da

i e i e i e i e i e i e i e i e i

125

B $\flat$  Tpt. 1

B $\flat$  Tpt. 2

Hn.

Tbn.

Tuba

half-valve gliss.

*p*

no mute

*p*

125

S

A

T

B

*p*

u

dAt dAt dAt dAt da\_\_ dAt dAt da

*p sub.*

u

130

B $\flat$  Tpt. 1

B $\flat$  Tpt. 2

Hn.

Tbn.

Tuba

harmon (stem out)

*p*

harmon (stem out)

*p*

*fp* < *f*

130

S

A

T

B

*mp* *p sub.*

u

u

135

harmon (stem out)

harmon (stem out)

B $\flat$  Tpt. 1

B $\flat$  Tpt. 2

Hn.

Tbn.

Tuba

135

135

135

S

A

T

B

*pp*

135



144 ♩ = 80

142

B $\flat$  Tpt. 1

B $\flat$  Tpt. 2

Hn.

Tbn.

Tuba

S

A

T

B

*pp*

*pp*

*p*

*f*

*mf*

flutter-tongue

senza vib. . . . molto vib. . . .

senza

*p*

*f*

*f*

*mf*

no mute  
senza vib. ----- molto vib. ----- senza vib.

148

B $\flat$  Tpt. 1

*p* ----- *f* ----- *p*

B $\flat$  Tpt. 2

Hn.

vib. ----- molto vib. ----- senza vib.

*f* ----- *p*

Tbn.

senza vib.

*p*

Tuba

*f* ----- *mf*

148

S

A

T

B

154

B $\flat$  Tpt. 1

B $\flat$  Tpt. 2

Hn.

Tbn.

Tuba

S

A

T

B

senza vib. . . . . molto vib. . . . . senza vib.

*p* *f* *p*

senza vib. . . . . molto vib. . . . . senza vib.

*p* *f* *p*

*f* *p*

### Nostalgically

161 ♩ = 80

161 ♩ = 80

harmon (stem in) rit.-----

B $\flat$  Tpt. 1

B $\flat$  Tpt. 2

Hn.

Tbn.

Tuba

*rubato*

*mf* *p*

161

S

*p* solo *mp* *p*

nasally

Li-lac lights paint a pale hor-i-zen

A

T

*p* solo *mp* *p*

Li-lac Lights Paint a Pale Hor-i-zen

B

solo *dejectedly*

*mp* *p*

3

du du du

166 a tempo molto rit. ----- a tempo

B♭ Tpt. 1

B♭ Tpt. 2

Hn.

Tbn.

Tuba

under solo voice

*p*

under solo voice

*p*

*mp*

*mp*

*p*

166

S

Near e-nough to touch — yet so far a - way to see those light blue bloss-

A

T

Near e-nough to touch — yet so far a - way to see those light blue bloss-

B

du near — yet so far — A - way to see — blue bloss-

170

B $\flat$  Tpt. 1

B $\flat$  Tpt. 2

Hn.

Tbn.

Tuba

under solo voice

170

S

A

T

B

sseems once more Feel how on the wind they'd sway

sseems once more Feel how on the wind they'd sway

sseems once more Feel how on the wind they'd sway

a tempo

rit.-----

173

no mute

*mf* warmly

B $\flat$  Tpt. 1

no mute

*mf* warmly

B $\flat$  Tpt. 2

open

*mf* warmly

Hn.

*mf* warmly

Tbn.

*mf* warmly

Tuba

173

S

A

T

B

177 ♩ = 76

B♭ Tpt. 1

B♭ Tpt. 2

Hn.

Tbn.

Tuba

177 *pp* floating

S

du du

*pp* floating

A

du du

*pp* floating

T

8

du du

B





185

B $\flat$  Tpt. 1

B $\flat$  Tpt. 2

Hn.

Tbn.

Tuba

flutter-tongue

*mf*

185

S

du du

*mf sub.*

A

du du

*mf sub.*

T

8

du du

*mf sub.*

B

u u







199 203 ♩ = 76

**B $\flat$  Tpt. 1**  
199 *mp* *p*

**B $\flat$  Tpt. 2**  
*p* straight mute *p*

**Hn.**  
stopped + + *p*

**Tbn.**

**Tuba**  
*p*

**S**  
199 *> p*  
du du

**A**  
*> p*  
du du

**T**  
*> p*  
du du

**B**

206 straight mute

B $\flat$  Tpt. 1 *p*

B $\flat$  Tpt. 2

Hn. +

Tbn.

Tuba

under voices  
lip bend

*p*

206

S

A

T

B

*p*

I \_\_\_\_\_ was

*p*

I \_\_\_\_\_ was

213

B $\flat$  Tpt. 1

B $\flat$  Tpt. 2

Hn.

Tbn.

Tuba

*mp*

*mp*

*mp*

under voices

*mp*

*p*

*mp*

*p*

213

S

A

T

B

*mp*

*p*

I was hop - ing

*mp*

*p*

I was hop - ing

*mp*

*p*

hop - ing that i'd fin - a - lly won

*mp*

*p*

hop - ing that i'd fin - a - lly won





224

B $\flat$  Tpt. 1  
*f* *p*

B $\flat$  Tpt. 2  
*f* *p*

Hn.  
*f* *p*  
+ + + + +  
under voices

Tbn.  
*f* yelling!  
under voices *p* whisper

Tuba  
*f* yelling! *p* whisper

224 *f* yelling! *p* whisper

S  
the truth! \_\_\_\_\_ Dawned on me with great pain \_\_\_\_\_  
*f* yelling! *p* whisper

A  
the truth! \_\_\_\_\_ Dawned on me with great pain \_\_\_\_\_  
*f* yelling! *p* whisper

T  
8 the truth! \_\_\_\_\_ Dawned on me with great pain \_\_\_\_\_  
*f* yelling! *p* whisper

B  
the truth! \_\_\_\_\_ Dawned on me with great pain \_\_\_\_\_

230

B $\flat$  Tpt. 1

B $\flat$  Tpt. 2

Hn.

Tbn.

Tuba

under voices

whisper

under voices

whisper

230

S

A

T

B

whisper

and I knew that I was there a - gain

whisper

and I knew that I was there a - gain

whisper

and I knew that I was there a - gain

235

B $\flat$  Tpt. 1

B $\flat$  Tpt. 2

Hn.

Tbn.

Tuba

*pp*

*pp*

*pp*

*pp*

*pp*

+

+

senza vib. ----- molto vib.

*p*  $\longleftarrow$  *mf*  $\longrightarrow$

235

S

A

T

B

*pp*

*pp*

*pp*

242

B $\flat$  Tpt. 1

B $\flat$  Tpt. 2

Hn.

Tbn.

Tuba

senza vib. --- molto vib. --- senza vib. senza vib. --- molto vib. ---

*p* *mf* *p* *p*

242

S

A

T

B



Nostalgically

♩ = 80

256

B♭ Tpt. 1

B♭ Tpt. 2

Hn.

Tbn.

Tuba

S

A

T

B

senza vib.

*p*

senza vib. molto vib. senza vib.

*p* *mf* *p* *mf*

rubato

262 harmon (stem in) rit. a tempo molto rit.

B $\flat$  Tpt. 1 *mf* *p*

B $\flat$  Tpt. 2 *mf* *p*

Hn. stopped + *mf* *p*

Tbn. *p* under solo voice

Tuba *p* under solo voice

262 *p* solo *mp* *p*

S *nasally*  
Li-lac lights paint a pale hor-i-zen Near e-nough to touch

A

T *p* solo *mp* *p*  
8  
Li-lac Lights Paint a Pale Hor-i-zen Near e-nough to touch  
solo *dejectedly*

B *mp* *p*  
3  
do do do do near



266 ----- a tempo

B $\flat$  Tpt. 1

B $\flat$  Tpt. 2

Hn.

Tbn.

Tuba

S

266 *mp* *p*

— yet so far a - way to see those light blue blossoms once more

A

T

8 *mp* *p*

— yet so far a - way to see those light blue blossoms once more

B

*mp* *p*

— yet so far A - way to see blue blossoms once more

270

a tempo

no mute

B $\flat$  Tpt. 1

B $\flat$  Tpt. 2

Hn.

Tbn.

Tuba

under solo voice

*mf* warmly

*mf* warmly open

*mf* warmly

*mf* warmly

*mf* warmly

270 *mp* *p* *pp*

S

Feel how on the wind they'd sway

A

T

8 *mp* *p* *pp*

Feel how on the wind they'd sway

B

*mp* *p* *pp*

Feel how they'd sway

rit. ----- ♩ = 76

273

B♭ Tpt. 1

B♭ Tpt. 2

Hn.

Tbn.

Tuba

273

S

A

T

B

*pp* floating

*pp* floating

*pp* floating

du du du du du du du du

du du du du du du du du

du du du du du du du du





284

B $\flat$  Tpt. 1

B $\flat$  Tpt. 2

Hn.

Tbn.

Tuba

flutter-tongue

*mf*

284

S

du du du du du du du du du du du du du du du du du du

*mf sub.*

A

du du du du du du du du du du du du du du du du du du

*mf sub.*

T

du du du du du du du du du du du du du du du du du du

*mf sub.*

B

u u

287

B $\flat$  Tpt. 1

B $\flat$  Tpt. 2

Hn.

Tbn.

Tuba

*senza vib.*

*p*

*senza vib.*

*molto vib.*

*senza*

*p*

*f*

*p*

*senza vib.*

*molto vib.*

*senza vib.*

*p*

*f*

*p*

287

S

A

T

B

du du du du du du    du du du du du du    du du du du du du    du du du du du du du du

du du du du du du    du du du du du du du    du du du du du du    du du du du du du du du du

du du du du du du    du du du du du du du    du du du du du du    du du du du du du du du du

du du du du du du    du du du du du du du    du du du du du du    du du du du du du du du du

291 *molto vib.* ----- *senza vib.*

B $\flat$  Tpt. 1 *f* *p*

B $\flat$  Tpt. 2 *mf* *warmly*

Hn.

Tbn.

Tuba

291

S  
du du

A  
du du

T  
du du

B  
*mf* *warmly*  
u u u u u u u







