

UC Davis

UC Davis Previously Published Works

Title

Early Release - Guaroa Virus and Plasmodium vivax Co-Infections, Peruvian Amazon
- Volume 26, Number 4—April 2020 - Emerging Infectious Diseases journal - CDC

Permalink

<https://escholarship.org/uc/item/1t49824d>

Journal

Emerging Infectious Diseases, 26(4)

ISSN

1080-6040

Authors

Siles, Crystyan
Elson, William H
Vilcarrromero, Stalin
[et al.](#)

Publication Date

2020-04-01

DOI

10.3201/eid2604.191104

Copyright Information

This work is made available under the terms of a Creative Commons Attribution License, available at <https://creativecommons.org/licenses/by/4.0/>

Peer reviewed

Guaroa Virus and *Plasmodium vivax* Co-Infections, Peruvian Amazon

Crystyan Siles, William H. Elson, Stalin Vilcarrero, Amy C. Morrison, Robert D. Hontz, Freddy Alava, Hugo Valdivia, Vidal Felices, Carolina Guevara, Sarah Jenkins, Eugenio J. Abente, Julia S. Ampuero

During April–June 2014 in a malaria-endemic rural community close to the city of Iquitos in Peru, we detected evidence of Guaroa virus (GROV) infection in 14 febrile persons, of whom 6 also had evidence of *Plasmodium vivax* malaria. Cases were discovered through a long-term febrile illness surveillance network at local participating health facilities. GROV cases were identified by using a combination of seroconversion and virus isolation, and malaria was diagnosed by thick smear and PCR. GROV mono-infections manifested as nonspecific febrile illness and were clinically indistinguishable from GROV and *P. vivax* co-infections. This cluster of cases highlights the potential for GROV transmission in the rural Peruvian Amazon, particularly in areas where malaria is endemic. Further study of similar areas of the Amazon may provide insights into the extent of GROV transmission in the Amazon basin.

Since 1990 in Peru, the US Naval Medical Research Unit 6 (NAMRU-6), in collaboration with the Peruvian Ministry of Health, has conducted clinic-based passive surveillance of acute febrile illnesses in Iquitos, the largest city in the Peruvian Amazon. Iquitos is an urban locale in the heart of the Amazon rainforest; the climate is tropical with frequent heavy rainfall. It has a population of ≈400,000, is accessible only by river or air travel, and is situated 120 m above sea level at the confluence of the Nanay, Itaya, and Amazon Rivers in the Loreto Department of northeastern Peru. Iquitos comprises 4 districts: Iquitos, San Juan, Belen, and Punchana. The city and its surrounding periurban and rural areas are home to an abundance

of mosquito species and provide a suitable environment for arbovirus and *Plasmodium* spp. transmission. Since 1993, at least 13 arboviruses have been detected in this area, of which dengue virus (DENV), Zika virus, Mayaro virus, and Venezuelan equine encephalitis virus are considered to be of public health importance (1).

Guaroa virus (GROV; order *Bunyavirales*, family *Peribunyaviridae*, genus *Orthobunyavirus*) (2) is a known cause of febrile illness in tropical regions of Central and South America (3). It was first isolated from asymptomatic humans in Colombia in 1956 (4) and isolated from symptomatic humans in Brazil in 1964 (5). Recent phylogenetic analysis suggests that a common ancestor of GROV and Wyeomyia virus was introduced into South America in the Brazilian Amazon region ≈250 years ago, with subsequent southward spread of GROV to Peru within the past 60–70 years (6). A serologic survey in 1965 provided evidence of GROV transmission in Peru shortly after this time (7).

More recent antibody prevalence studies on samples collected in Iquitos in 2006 demonstrated an overall GROV seroprevalence of 13% (3). The increasing seroprevalence with age suggests that transmission occurred consistently in the region over several years (3). In addition to seroprevalence, this study also described 15 symptomatic GROV infections in Peru (including 3 in Iquitos) during 1995–2008, providing further evidence of GROV as a cause of symptomatic disease in the region (3).

The only confirmed vector of GROV is *Anopheles (Kerteszia) neivai* mosquitoes (8). This species is an important vector of human malaria in the Pacific lowlands of Colombia (9). After a successful elimination effort in the 1960s, malaria reemerged in the early 1990s in the Peruvian Amazon, coincident with the reintroduction of *An. darlingi* mosquitoes and is currently a leading cause of febrile illness (10). Subsequently, a resurgence of *P. falciparum* peaked in 1997,

Author affiliations: US Naval Medical Research Unit 6, Lima, Peru (C. Siles, S. Vilcarrero, R.D. Hontz, H. Valdivia, V. Felices, C. Guevara, S. Jenkins, E.J. Abente, J.S. Ampuero); University of California, Davis, Davis, California, USA (W.H. Elson, A.C. Morrison); Centro de Salud San Juan, Direccion Regional de Salud Loreto, Iquitos, Peru (F. Alava)

DOI: <https://doi.org/10.3201/eid2604.191104>

at which point *P. falciparum* prevalence decreased significantly. The *An. darlingi* mosquito is the primary vector of malaria in rural areas near Iquitos (11–13). There are numerous reports in the literature of arboviral and malarial co-infections, but reports of GROV and malaria co-infection are scarce, and only co-infection with *P. falciparum* has been reported (14,15). We describe the clinical and epidemiologic aspects of a GROV outbreak in the rural surroundings of Iquitos and report symptomatic co-infections with GROV and *P. vivax*.

Methods

We identified GROV cases through a passive febrile surveillance system at 12 health centers in urban, periurban, and rural areas in and around Iquitos, which were described previously (1). Inclusion criteria were age ≥ 5 years, oral or tympanic temperature $\geq 38^{\circ}\text{C}$ (or axillary $\geq 37.5^{\circ}\text{C}$), duration of symptoms ≤ 5 days, and no obvious focus of infection. All participants at these sites were initially screened for *Plasmodium* infection by thick smear and were then invited to undergo screening for arboviruses regardless of their smear results. In addition to serum samples obtained during the acute phase, serum samples were obtained during follow-up evaluations 20 days (± 10 days), 3 months (± 15 days), 6 months (± 15 days), and 12 months (± 30 days) after the initial sample. Serum

samples collected on day 20 were used to measure convalescent titers.

Of the 12 clinics, 2 are in rural communities with active malaria transmission (Zungarococha and Quistococha communities), and 3 urban clinics serve as catchment areas for communities with active malaria transmission (Bella Vista Nanay, 6 de Octubre, and San Juan). The GROV cases reported in this study were captured during April 5–June 26, 2014, from 3 malaria-endemic communities in the district of San Juan (Santo Tomas, Quistococha, and Zungarococha) (Figure).

We obtained approval for the study protocol (NMRCD.2010.0010) from the Institutional Review Board of NAMRU-6 in compliance with all applicable US federal regulations governing the protection of human subjects and from the Institutional Review Board of the Peruvian Ministry of Health. Adults ≥ 18 years of age provided written informed consent, and parents or legal guardians of participants ≤ 17 years of age provided assent.

Arboviral Testing

After a negative result by reverse transcription PCR (RT-PCR) for DENV (16), we attempted to isolate causative agents with *Aedes albopictus* (C6/36) and African green monkey kidney (Vero 76) cell cultures in combination with an immunofluorescence assay

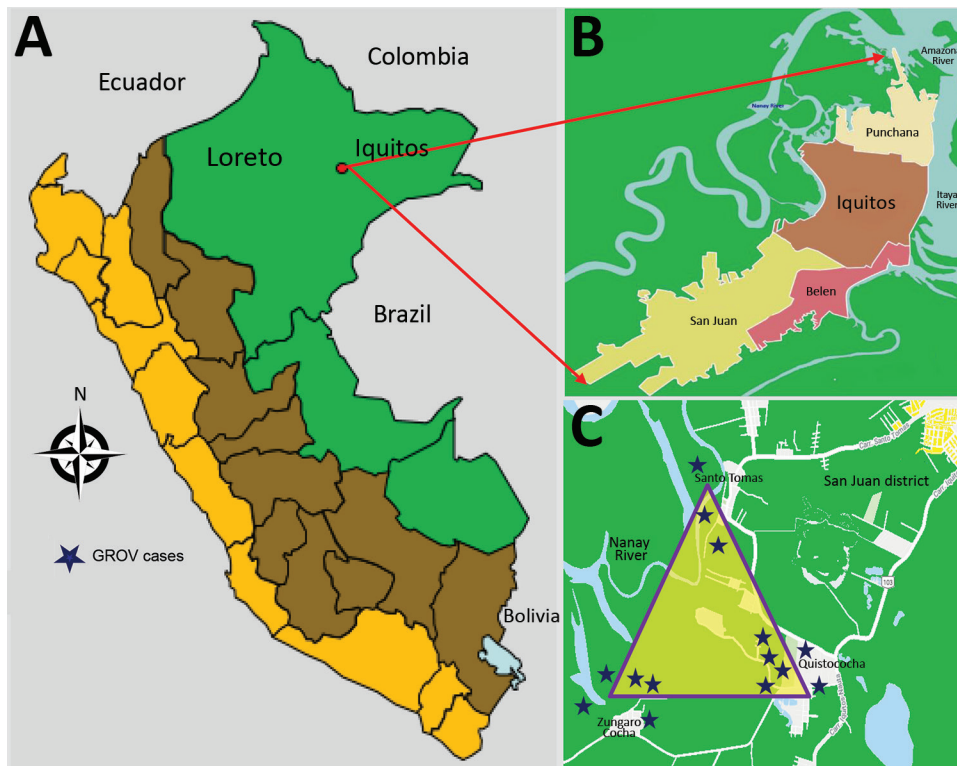


Figure. Geographic distribution of patients with Guaroa virus infection, April–June 2014. A) Peru. B) Iquitos districts. C) District of San Juan. Stars indicate locations of Guaroa virus cases.

using hyperimmune mouse ascitic fluid (HMAF) raised against flaviviruses, alphaviruses, and bunyaviruses. For bunyavirus detection, we used pooled HMAF against various bunyaviruses (Oropouche 172, Caraparu isolate from Peru, Guaroa isolate from Peru, Maguari R18134, Echarate isolate from Peru and California [EVBSF-283]), followed by the addition of fluorescein-conjugated goat antimouse IgG (1). We performed ELISA IgM capture assay with acute and convalescent serum samples for GROV and other endemic arboviruses (Mayaro virus, Venezuelan equine encephalitis virus, Oropouche virus, group C viruses, and DENV). Microtiter plates (96-well format) were coated with goat F(ab')₂ antihuman IgM (Jackson Immuno Research Laboratories Inc., <https://www.jacksonimmuno.com>) diluted 1:1,000 in phosphate-buffered saline and incubated overnight at 4°C. We diluted participant serum 1:100 and incubated in coated wells for 1 h at 37°C, then added viral antigen and incubated at 37°C for 1 h. We detected viral antigens with HMAF (produced by inoculation of mice with the respective viral strains), followed by horseradish peroxidase-conjugated goat antimouse IgM + IgG (H+L) (Thermo Fisher Scientific, <https://www.thermofisher.com>). After adding ABTS (2,2'-azino-bis-[3-ethylbenzthiazoline-6-sulfonic acid]) colorimetric substrate, we read plates at 410 nm with a Multiskan Microplate Photometer FC absorbance reader (ThermoFisher Scientific) (1). We retested samples with detectable IgM at 4-fold serial dilutions (1:100, 1:400, 1:1,600, and 1:6,400). We defined seroconversion as a ≥ 4 -fold increase in IgM between acute- and convalescent-phase samples and considered participants positive for GROV infection if virus was isolated by cell culture or if seroconversion was observed.

RNA Extraction, Sequencing, and Phylogenetic Analysis

We extracted RNA from 14 serum samples using the QIAamp Viral RNA Mini Kit (QIAGEN, <https://www.qiagen.com>), following the manufacturer's instructions. We performed reverse transcription and amplifications using the Access RT-PCR System kit (Promega) and previously described primers Bunya 1 (GTCACAGTAGTGTACTCCAC) and Bunya 2 (CTGACAGTAGTGTGCTCCAC), which amplify a 616-bp amplicon of the S (small) RNA segment. The amplicon covers 462/702 nt of the nucleocapsid coding sequence and 154/226 nt of the 5'-non-translated region of the viral RNA. We performed reverse transcription at 42°C for 1 h. PCR amplifications comprised 38 cycles of denaturation (94°C for 30 s), annealing (50°C for 40 s), and extension (72°C for 1.5 min) and a final extension at 72°C for 10 min.

We then purified amplicons with Centri-Sep columns (Invitrogen, <https://www.thermofisher.com>) and sequenced directly using the BigDye Terminator v3.1 Sequencing Kit (Applied Biosystems, <https://www.fishersci.com>), following the manufacturer's protocol. We conducted sequencing on a 3130 XL Genetic Analyzer (Applied Biosystems) platform and analyzed sequences using Sequencher software (Gene Codes Corporation); we queried individual sequences by using the nucleotide database with BLAST (17).

Malaria Testing

Microscopy was the primary method of *Plasmodium* identification conducted by the health centers as part of the Ministry of Health's surveillance. Microscopy was also used as part of our study, although to evaluate *Plasmodium* spp. infection more accurately in all GROV-positive cases, we also tested blood from acute-phase samples for *Plasmodium* by PCR regardless of their initial thick-smear results. DNA was extracted from whole blood samples using the DNeasy Blood & Tissue Kit (QIAGEN), following the manufacturer's protocol. *Plasmodium* DNA was amplified using a nested PCR protocol that targets the small subunit ribosomal RNA 18S gene (18). Both reactions were conducted in a volume of 50 μ L containing 1X Taq polymerase buffer (Invitrogen), 2 mmol/L MgCl₂, 125 μ mol/L dNTPs (Invitrogen), 0.25 μ mol/L of each primer, 1 unit of Taq DNA polymerase (Invitrogen), and 5 μ L of DNA sample. We ran both PCR reactions on a Verity Thermal Cycler (Applied Biosystems) as previously described (18). We used DNA from *P. falciparum* 3D7 and *P. vivax* Sal-I reference strains as positive controls and human DNA from a person from a non-malaria-endemic area as a negative control. We subsequently ran PCR products on a 2% agarose gel; a band of ≈ 205 -bp indicates the presence of *P. falciparum* DNA, and a PCR product of 120-bp indicates the presence of *P. vivax* DNA.

Results

During the 3-month period when GROV infections were detected, a total of 681 febrile patients were enrolled from all 12 participating clinics around Iquitos. All GROV-infected participants lived in the district of San Juan, in 1 of the 3 malaria-endemic communities: Santo Tomas, Quistococha, or Zungarococha. A total of 121 (18%) of 681 febrile persons resided in 1 of these 3 communities in San Juan. Of those, 14 (12%) tested positive for GROV infection, of whom 6 (43%) were co-infected with *P. vivax*. Of the 14 persons for whom GROV infection was confirmed, 3 were enrolled in urban health facilities, although these 3 persons

reside in the rural San Juan district (Figure). During the 3-month study period, 26 malaria cases were reported in the San Juan district, including the 6 with GROV co-infection.

All 14 GROV-infected persons seroconverted and were negative for all other examined arboviruses; 11 (79%) samples collected from these persons yielded GROV isolates in both Vero-76 and C6/36 (Table 1). Diagnosis of malaria in 6 GROV-infected persons was determined by positive thick smear in 4 cases, positive PCR and thick smear in 1 case, and positive PCR alone in 1 case.

Mean age of the 14 GROV-infected persons was 35.4 years (range 14–64 years). The mean age of the 8 GROV mono-infected persons was 40 years (range 40–64 years), and the mean age of co-infected persons was 29.2 years (range 17–35 years). Nine of the 14 GROV-positive case-patients were male.

Ten samples were positive for GROV by RT-PCR and were sequenced. A BLAST search determined that the DNA sequences had 99% identity with 3 GROV strain isolates collected in Peru during 2004–2008. Multiple alignment analysis of the 10 sequences analyzed showed they were nearly identical, with only 2 nt differences: a synonymous substitution at codon 151 of the nucleocapsid (TTT and TTC) and in the 5'-nontranslated region of the viral RNA at nucleotide position 31 (C and T; Appendix Figure, <https://wwwnc.cdc.gov/EID/article/26/4/19-1104-App1.pdf>).

All participants reported fever, chills, malaise, body pain, joint pain, and headache (Table 2). Myalgia, anorexia, nausea, and dysgeusia occurred in 8 patients. Only 2 patients reported a rash. Distinct symptom frequencies between persons with GROV mono-infection and co-infected persons were

conjunctival injection, dysgeusia, cough, and sore throat. These symptoms occurred more frequently in persons without malaria. These differences in symptoms were not statistically significant (χ^2 with Yates correction significance level 0.05).

Median fever duration for both GROV mono-infection and co-infected persons was 4.5 days. Symptoms with the longest median duration for all participants were body pain, joint pain, headache, and dizziness (all >5 days). Headache was reported during the convalescent phase and for up to 3 months during follow-up in 4 patients with a GROV mono-infection and 2 patients with GROV and malaria co-infection. Duration of symptoms between mono-infected and co-infected persons did not differ significantly. No patients were hospitalized, and all recovered without sequelae.

Discussion

The circulation of many arboviruses in the Peruvian Amazon is well documented, but most cases are not reported (1), possibly because the asymptomatic and mild self-limiting infections are common and do not usually result in treatment-seeking behavior (14). Other important factors are the absence of diagnostic facilities for detecting arboviruses in areas to which they are endemic, limited access to healthcare for at-risk persons in rural Amazonian populations, and the narrow window of opportunity to collect potentially diagnostic blood samples during the acute phase of the illness (15,19). Another factor limiting arboviral diagnosis and identification of co-infections with other pathogens is that once malaria is diagnosed, secondary diagnoses are rarely pursued (15). For example, in our study GROV infection was diagnosed in 3 patients after they returned to the same health

Table 1. Laboratory findings and serologic response expressed as inverse titers for patients with GROV infection, Peruvian Amazon, April–June 2014*

Patient	Thick smear malaria result	PCR result		Virus isolated	IgM				
		Malaria	GROV		Acute phase	Convalescent phase†	Month 3	Month 6	Month 12
1	<i>Plasmodium vivax</i>	Neg	Pos	GROV	0	1:6,400	0	0	0
2	<i>P. vivax</i>	Neg	Pos	GROV	0	0	1:1,600	0	0
3	Neg	Neg	Neg	Neg	1:400	1:1,600	0	VNC	VNC
4	Neg	Neg	Pos	GROV	0	1:1,600	0	0	0
5	Neg	Neg	Pos	GROV	0	1:1,600	0	0	0
6	<i>P. vivax</i>	Neg	Pos	GROV	0	1:6,400	0	0	0
7	<i>P. vivax</i>	<i>P. vivax</i>	Pos	GROV	0	1:6,400	1:400	1:100	0
8	Neg	Neg	Pos	GROV	0	1:6,400	0	0	0
9	<i>P. vivax</i>	Neg	Pos	GROV	0	1:6,400	0	0	0
10	Neg	Neg	Neg	GROV	0	1:6,400	0	0	0
11	Neg	<i>P. vivax</i>	Neg	Neg	1:100	1:1,600	VNC	VNC	VNC
12	Neg	Neg	Pos	GROV	0	1:400	0	0	0
13	Neg	Neg	Neg	Neg	0	1:1,600	VNC	VNC	VNC
14	Neg	Neg	Pos	GROV	0	1:6,400	1:400	0	0

*GROV, Guaroa virus; neg, negative; pos, positive; VNR, visit not complete.

†At follow-up 20 d after the acute phase.

Table 2. Clinical, epidemiologic, and demographic characteristics of patients confirmed to have GROV mono-infection and GROV–*Plasmodium* sp. co-infection, Amazonian Peru, April–June 2014*

Patient no.	Age, y/sex	Occupation	Day of illness at enrollment	Infection	Acute-phase clinical manifestations
1	40/F	Housewife	5	Co-infection	Constitutional (malaise, chills, retro-orbital pain, dizziness, headache), gastrointestinal (anorexia, dysgeusia, nausea), musculoskeletal (myalgia, bone pain, joint pain)
2	53/F	Housewife	4	Co-infection	Constitutional (malaise, chills, retro-orbital pain, conjunctivitis, headache), gastrointestinal (anorexia, nausea, abdominal pain), musculoskeletal (myalgia, bone pain, joint pain)
3	64/M	Farmer	3	GROV	Constitutional (malaise, chills, dizziness, retro-orbital pain, conjunctivitis, headache), gastrointestinal (anorexia, dysgeusia, abdominal pain, nausea), musculoskeletal (myalgia, bone pain, joint pain), cutaneous (exanthema)
4	38/M	Farmer	1	GROV	Constitutional (malaise, chills, dizziness, retro-orbital pain, conjunctivitis, headache), gastrointestinal (anorexia, dysgeusia, nausea), musculoskeletal (myalgia, bone pain, joint pain), respiratory (rhinorrhea, sore throat, cough)
5	51/F	Housewife	1	GROV	Constitutional (malaise, chills, retro-orbital pain, conjunctivitis, headache), gastrointestinal (anorexia, dysgeusia, diarrhea, abdominal pain), musculoskeletal (myalgia, bone pain, joint pain)
6	25/F	Housewife	2	Co-infection	Constitutional (malaise, chills, dizziness, retro-orbital pain, conjunctivitis, headache), gastrointestinal (anorexia, dysgeusia, abdominal pain, diarrhea, nausea), musculoskeletal (myalgia, bone pain, joint pain), cutaneous (exanthema), hemorrhagic (gingivorrhagia)
7	22/F	Housewife	2	Co-infection	Constitutional (malaise, chills, retro-orbital pain, headache), gastrointestinal (anorexia, dysgeusia, nausea), musculoskeletal (myalgia, bone pain, joint pain)
8	36/M	Farmer	2	GROV	Constitutional (malaise, chills, dizziness, retro-orbital pain, conjunctivitis, headache), gastrointestinal (anorexia, dysgeusia, nausea), musculoskeletal (myalgia, bone pain, joint pain), respiratory (rhinorrhea)
9	18/M	Army forces	1	Co-infection	Constitutional (malaise, chills, dizziness, retro-orbital pain, headache), gastrointestinal (anorexia, dysgeusia, abdominal pain), musculoskeletal (bone pain, joint pain)
10	29/M	Army forces	4	GROV	Constitutional (malaise, chills, dizziness, headache), gastrointestinal (dysgeusia, abdominal pain, diarrhea), musculoskeletal (myalgia, bone pain, joint pain)
11	17/M	Student	3	Co-infection	Constitutional (malaise, chills, dizziness, headache), gastrointestinal (anorexia, nausea), musculoskeletal (myalgia, bone pain, joint pain)
12	24/M	Student	1	GROV	Constitutional (malaise, chills, retro-orbital pain, conjunctivitis, headache), gastrointestinal (anorexia, dysgeusia), musculoskeletal (myalgia, bone pain, joint pain)
13	64/M	Farmer	5	GROV	Constitutional (malaise, chills, dizziness, retro-orbital pain, conjunctivitis, headache), gastrointestinal (anorexia, dysgeusia, abdominal pain, vomiting, diarrhea, nausea), musculoskeletal (myalgia, bone pain, joint pain), cutaneous (exanthema)
14	14/M	Student	1	GROV	Constitutional (malaise, chills, retro-orbital pain, conjunctivitis, headache), gastrointestinal (anorexia, dysgeusia, nausea), musculoskeletal (myalgia, bone pain, joint pain), respiratory (rhinorrhea, sore throat, cough)

*GROV, Guaroa virus.

center within 3 days after having tested positive for *P. vivax*. Because their febrile symptoms persisted despite treatment with antimalarial drugs, they provided additional samples that tested positive for GROV. Although previous exposure to antimalarial drugs might have affected our RT-PCR results for malaria and might have resulted in a false-negative result, only 2 patients were willing to provide blood samples for arbovirus testing during the same visit in which they tested positive for *P. vivax* by thick smear. The detection of viral and parasitic co-infection

demonstrates the value of actively looking for viral pathogens in malaria-positive patients at the time they seek medical care during the acute phase, when the probability of identifying a viral infection is highest.

Current knowledge about GROV as a human pathogen is limited, and little is known about its reservoir hosts and vectors, particularly in Peru. *Anopheles* mosquitoes have been implicated elsewhere as vectors for GROV (5,8,20), although few arbovirus are known to be transmitted by *Anopheles* mosquitoes, such as o'nyong-nyong virus, which is transmitted

in Africa by *An. funestus* and *An. gambiae* mosquitoes (21). It is possible that a co-infected mosquito could transmit both *Plasmodium* spp. and GROV; however, vector-competence studies of *An. darlingi* mosquitoes with GROV have not yet been published (22). The *An. darlingi* mosquito is the most common and competent malaria vector in the Peruvian Amazon (11–13,23,24). During 2014, the Peruvian Ministry of Health recorded 65,239 malaria cases in the entire country, most of which resulted from *P. vivax* (84%) and were detected in the Amazon region of Loreto ($\approx 90\%$) (23). The GROV infection reported in this study coincides temporally with the peak of this *P. vivax* outbreak observed in 2014 (25), increasing the chances of co-infected mosquitoes, probability of transmission to humans, or both.

Furthermore, malaria rates tend to be high along the Nanay River, located only a few kilometers from the southern Iquitos city limits (26). All the GROV cases observed in the present report came from rural communities in the district of San Juan Baustista bordering the Nanay River. Further investigation is needed to understand the nature of these co-infections because they could have occurred solely as a consequence of the elevated levels of circulating *P. vivax*, a possible peak in *Anopheles* populations, or subclinical/persistent malaria with fever caused by GROV infection. In addition, identification of nonhuman reservoirs for GROV is critical to clarify the epidemiology of the disease and distinguish GROV from other arboviruses circulating in and near Iquitos (27,28).

Consistent with a previous report (3), the clinical manifestations of GROV infection in this study were highly nonspecific, and persons co-infected with *P. vivax* were clinically indistinguishable from those with GROV infection alone. It was not possible to determine the relative contribution of malaria and GROV to the symptomatology of co-infected persons; however, 3 of the 5 patients with positive thick smears who were treated with antimalarial drugs returned to the same health center within 3 days after the initial diagnosis because of persistent fever. These symptoms could, at least in part, have been related to the GROV infection consistent with other clinical symptom reports (3). Understanding the origin of symptoms in co-infected persons is further complicated because both asymptomatic malaria and arboviral disease are common (14,29).

The cases of GROV fever we report may underrepresent the true number of total cases in Iquitos during the study period. GROV may be underreported because of overlapping symptoms between

pathogens, such as DENV and *Plasmodium* spp., that are more frequently targeted by diagnostic tests. Our study highlights the importance of the febrile surveillance system and its access to advanced diagnostic facilities that enabled detection of these cases. Continued surveillance is necessary not only to monitor the dynamics of well-studied diseases, such as dengue and malaria, but also to capture the emergence of potentially new pathogens with epidemic potential that pose a public health risk. In particular, examining malaria-endemic communities may provide an opportunity to better quantify the incidence of GROV and other endemic or enzootic pathogens.

Acknowledgments

We thank Nora Marin, Flora Vargas, Leslye Angulo, Guadalupe Florez, Christopher Cruz, and Maria Silva for invaluable support in the execution of the study and manuscript preparation. In addition, we thank the personnel of the Direccion Regional de Salud de Loreto for supporting our febrile illness surveillance study.

This study was supported by funding from the US Department of Defense Health Agency – Armed Forces Health Surveillance Branch (AFHSB) Global Emerging Infections Surveillance and Response System (GEIS), Work Unit no. 847705.82000.25GB.B0016. Period of Funding: 2014. ProMIS ID: P0144_20_N6.

About the Author

Dr. Siles is a physician who participates in the Surveillance and Etiology of Febrile Acute Diseases in Peru project at NAMRU-6 and the Peruvian Ministry of Health. His primary research interests include the clinical and epidemiologic aspects of bunyavirus, flavivirus, and alphavirus infections.

References

1. Forshey BM, Guevara C, Laguna-Torres VA, Cespedes M, Vargas J, Gianella A, et al.; NMRC D Febrile Surveillance Working Group. Arboviral etiologies of acute febrile illnesses in western South America, 2000–2007. *PLoS Negl Trop Dis*. 2010;4:e787. <http://doi.org/10.1371/journal.pntd.0000787>
2. Adams MJ, Lefkowitz EJ, King AMQ, Harrach B, Harrison RL, Knowles NJ, et al. Changes to taxonomy and the International Code of Virus Classification and Nomenclature ratified by the International Committee on Taxonomy of Viruses (2017). *Arch Virol*. 2017;162:2505–38. <http://doi.org/10.1007/s00705-017-3358-5>
3. Aguilar PV, Morrison AC, Rocha C, Watts DM, Beingolea L, Suarez V, et al. Guaroa virus infection among humans in Bolivia and Peru. *Am J Trop Med Hyg*. 2010;83:714–21. <http://doi.org/10.4269/ajtmh.2010.10-0116>
4. Groot H, Oya A, Bernal C, Barreto-Reyes P. Guaroa virus, a new agent isolated in Colombia, South America. *Am J*

- Trop Med Hyg. 1959;8:604–9. <http://doi.org/10.4269/ajtmh.1959.8.604>
5. Pinheiro F, Travassos da Rosa A, Vasconcelos P. Guaroa and other Bunyamwera group fevers. In: Beran G, editor. Handbook of zoonoses. Section B: viral zoonoses. Boca Raton (FL); CRC Press; 1994. p. 217–8.
 6. Groseth A, Wollenberg KR, Mampilli V, Shupert T, Weisend C, Guevara C, et al. Spatiotemporal analysis of Guaroa virus diversity, evolution, and spread in South America. *Emerg Infect Dis*. 2015;21:460–3. <http://doi.org/10.3201/eid2103.141351>
 7. Madalengoitia J, Flores W, Casals J. Arbovirus antibody survey of sera from residents of eastern Peru. *PAHO Bull*. 1973;7:25–34.
 8. Lee VH, Sanmartin C. Isolations of Guaroa virus from *Anopheles (Kerteszia) neivai* in the Pacific lowlands of Colombia. *Am J Trop Med Hyg*. 1967;16:778–81. <http://doi.org/10.4269/ajtmh.1967.16.778>
 9. Carvajal H, de Herrera MA, Quintero J, Alzate A, Herrera S. *Anopheles neivai*: a vector of malaria in the Pacific lowlands of Colombia. *Trans R Soc Trop Med Hyg*. 1989;83:609. [http://doi.org/10.1016/0035-9203\(89\)90372-6](http://doi.org/10.1016/0035-9203(89)90372-6)
 10. Aramburú Guarda J, Ramal Asayag C, Witzig R. Malaria reemergence in the Peruvian Amazon region. *Emerg Infect Dis*. 1999;5:209–15. <http://doi.org/10.3201/eid0502.990204>
 11. Branch O, Casapia WM, Gamboa DV, Hernandez JN, Alava FF, Roncal N, et al. Clustered local transmission and asymptomatic *Plasmodium falciparum* and *Plasmodium vivax* malaria infections in a recently emerged, hypoendemic Peruvian Amazon community. *Malar J*. 2005;4:27. <http://doi.org/10.1186/1475-2875-4-27>
 12. Fernández R, Vera H, Calderón G. Historical review of the distribution of *Anopheles (Nyssorhynchus) darlingi* (Diptera: Culicidae) in the Peruvian Amazon [in Spanish]. *Rev Peru Med Exp Salud Publica*. 2014;31:310–8. <http://doi.org/10.17843/rpmesp.2014.312.52>
 13. Vittor AY, Gilman RH, Tielsch J, Glass G, Shields T, Lozano WS, et al. The effect of deforestation on the human-biting rate of *Anopheles darlingi*, the primary vector of falciparum malaria in the Peruvian Amazon. *Am J Trop Med Hyg*. 2006;74:3–11. <http://doi.org/10.4269/ajtmh.2006.74.3>
 14. Sow A, Loucoubar C, Diallo D, Faye O, Ndiaye Y, Senghor CS, et al. Concurrent malaria and arbovirus infections in Kedougou, southeastern Senegal. *Malar J*. 2016;15:47. <http://doi.org/10.1186/s12936-016-1100-5>
 15. Vasconcelos P, Rosa A, Rosa J, Dégallier N. Concomitant infections by malaria and arboviruses in the Brazilian Amazon region. *Rev Latinoam Microbiol*. 1990;32:291–4.
 16. Lanciotti RS, Calisher CH, Gubler DJ, Chang G-J, Vorndam AV. Rapid detection and typing of dengue viruses from clinical samples by using reverse transcriptase-polymerase chain reaction. *J Clin Microbiol*. 1992;30:545–51. <http://doi.org/10.1128/JCM.30.3.545-551.1992>
 17. Altschul SF, Gish W, Miller W, Myers EW, Lipman DJ. Basic local alignment search tool. *J Mol Biol*. 1990;215:403–10. [http://doi.org/10.1016/S0022-2836\(05\)80360-2](http://doi.org/10.1016/S0022-2836(05)80360-2)
 18. Snounou G, Viriyakosol S, Zhu XP, Jarra W, Pinheiro L, do Rosario VE, et al. High sensitivity of detection of human malaria parasites by the use of nested polymerase chain reaction. *Mol Biochem Parasitol*. 1993;61:315–20. [http://doi.org/10.1016/0166-6851\(93\)90077-B](http://doi.org/10.1016/0166-6851(93)90077-B)
 19. Fukuda MM, Klein TA, Kochel T, Quandelacy TM, Smith BL, Villinski J, et al.; AFHSC-GEIS Malaria and Vector Borne Infections Writing Group. Malaria and other vector-borne infection surveillance in the U.S. Department of Defense Armed Forces Health Surveillance Center–Global Emerging Infections Surveillance program: review of 2009 accomplishments. *BMC Public Health*. 2011;11(Suppl 2):S9. <http://doi.org/10.1186/1471-2458-11-S2-S9>
 20. Peralta PH, Shelokov A. Isolation and characterization of arboviruses from Almirante, Republic of Panama. *Am J Trop Med Hyg*. 1966;15:369–78. <http://doi.org/10.4269/ajtmh.1966.15.369>
 21. LaBeaud AD, Banda T, Brichard J, Muchiri EM, Mungai PL, Mutuku FM, et al. High rates of O'nyong nyong and chikungunya virus transmission in coastal Kenya. *PLoS Negl Trop Dis*. 2015;9:e0003436. <http://doi.org/10.1371/journal.pntd.0003436>
 22. Groot H. Estudios sobre virus transmitidos por artrópodos en Colombia. *Revista de la Academia Colombiana de Ciencias Exactas. Físicas y Naturales*. 2017;41(supplement):12–33.
 23. Ministerio de Salud Perú-Dirección General de Epidemiología. Sala de Situación de Salud Perú: Semana epidemiológica no 01–2015. 2015 [cited 2019 Apr 22]. <http://www.dge.gob.pe/portal/docs/vigilancia/boletines/2014/24.pdf>
 24. Rosas-Aguirre A, Gamboa D, Manrique P, Conn JE, Moreno M, Lescano AG, et al. Epidemiology of *Plasmodium vivax* malaria in Peru. *Am J Trop Med Hyg*. 2016;95 (Suppl):133–44. <http://doi.org/10.4269/ajtmh.16-0268>
 25. Ministerio de Salud Perú-Dirección General de Epidemiología. Sala de Situación de Salud Perú: Semana epidemiológica no 05–2018. 2018 [cited 2019 Dec 16]. <http://www.dge.gob.pe/portal/docs/vigilancia/sala/2018/SE05/malaria.pdf>
 26. Bautista CT, Chan AS, Ryan JR, Calampa C, Roper MH, Hightower AW, et al. Epidemiology and spatial analysis of malaria in the northern Peruvian Amazon. *Am J Trop Med Hyg*. 2006;75:1216–22. <http://doi.org/10.4269/ajtmh.2006.75.1216>
 27. Morrison AC, Forshey BM, Notyce D, Astete H, Lopez V, Rocha C, et al. Venezuelan equine encephalitis virus in Iquitos, Peru: urban transmission of a sylvatic strain. *PLoS Negl Trop Dis*. 2008;2:e349. <http://doi.org/10.1371/journal.pntd.0000349>
 28. Turell MJ, O'Guinn ML, Jones JW, Sardelis MR, Dohm DJ, Watts DM, et al. Isolation of viruses from mosquitoes (Diptera: Culicidae) collected in the Amazon Basin region of Peru. *J Med Entomol*. 2005;42:891–8. <http://doi.org/10.1093/jmedent/42.5.891>
 29. Rovira-Vallbona E, Contreras-Mancilla JJ, Ramirez R, Guzmán-Guzmán M, Carrasco-Escobar G, Llanos-Cuentas A, et al. Predominance of asymptomatic and sub-microscopic infections characterizes the *Plasmodium gametocyte reservoir* in the Peruvian Amazon. *PLoS Negl Trop Dis*. 2017;11:e0005674. <http://doi.org/10.1371/journal.pntd.0005674>

Address for correspondence: Crystyan Siles, Pasaje Rosa Merino #30, Iquitos, Peru; email: crystyan.siles.ln@mail.mil