

UC Davis

UC Davis Previously Published Works

Title

Antimicrobial Resistance Profiles of Non-typhoidal Salmonella From Retail Meat Products in California, 2018

Permalink

<https://escholarship.org/uc/item/2172p9h1>

Authors

Lee, Katie Yen

Atwill, Edward Robert

Pitesky, Maurice

et al.

Publication Date

2022

DOI

10.3389/fmicb.2022.835699

Peer reviewed



Antimicrobial Resistance Profiles of Non-typhoidal *Salmonella* From Retail Meat Products in California, 2018

Katie Yen Lee^{1,2*}, Edward Robert Atwill¹, Maurice Pitesky¹, Anny Huang¹, Kurtis Lavelle², Maribel Rickard³, Marzieh Shafii³, Melody Hung-Fan³ and Xunde Li^{1,2*}

¹ Department of Population Health and Reproduction, School of Veterinary Medicine, University of California, Davis, Davis, CA, United States, ² Western Institute for Food Safety and Security, University of California, Davis, Davis, CA, United States, ³ Contra Costa County Public Health Laboratory, Martinez, CA, United States

OPEN ACCESS

Edited by:

Panagiotis Skandamis,
Agricultural University of Athens,
Greece

Reviewed by:

Orhan Sahin,
Iowa State University, United States
Guyue Cheng,
Huazhong Agricultural University,
China

*Correspondence:

Katie Yen Lee
kctlee@ucdavis.edu
Xunde Li
xdl@ucdavis.edu

Specialty section:

This article was submitted to
Food Microbiology,
a section of the journal
Frontiers in Microbiology

Received: 14 December 2021

Accepted: 10 January 2022

Published: 16 March 2022

Citation:

Lee KY, Atwill ER, Pitesky M, Huang A, Lavelle K, Rickard M, Shafii M, Hung-Fan M and Li X (2022) Antimicrobial Resistance Profiles of Non-typhoidal *Salmonella* From Retail Meat Products in California, 2018. *Front. Microbiol.* 13:835699. doi: 10.3389/fmicb.2022.835699

Non-typhoidal *Salmonella* remains a leading cause of foodborne illness in the United States, with food animal products serving as a key conduit for transmission. The emergence of antimicrobial resistance (AMR) poses an additional public health concern warranting better understanding of its epidemiology. In this study, 958 retail meat samples collected from January to December 2018 in California were tested for *Salmonella*. From multivariable logistic regression, there was a 6.47 (90% CI 2.29–18.27), 3.81 (90% CI 1.29–11.27), and 3.12 (90% CI 1.03–9.45) higher odds of contamination in samples purchased in the fall, spring, and summer than in winter months, respectively, and a 3.70 (90% CI 1.05–13.07) higher odds in ground turkey compared to pork samples. Fourteen distinct serotypes and 17 multilocus sequence types were identified among the 43 isolates recovered, with *S. Kentucky* (25.58%), *S. Reading* (18.60%), *S. Infantis* (11.63%), and *S. Typhimurium* (9.30%) comprising the top serotypes. High prevalence of resistance was observed in retail chicken isolates for streptomycin (12/23, 52.17%) and tetracycline (12/23, 52.17%), in ground turkey isolates for ampicillin (8/15, 53.34%), and in ground beef isolates for nalidixic acid (2/3, 66.67%). Fourteen (32.56%) were susceptible to all antimicrobials tested, 11 (25.58%) were resistant to one drug, and 12 (27.91%) were resistant to two drugs. The remaining six isolates (13.95%) were multidrug-resistant (MDR, ≥ 3 drug classes) *S. Infantis* ($n = 4$), *S. Reading* ($n = 1$), and *S. Kentucky* ($n = 1$). Whole-genome sequencing (WGS) identified 16 AMR genes and 17 plasmid replicons, including *bla*_{CTX-M-65} encoding ceftriaxone resistance and a D87Y mutation in *gyrA* conferring resistance to nalidixic acid and reduced susceptibility to ciprofloxacin. The IncFIB(pN55391) replicon previously identified in connection to the worldwide dissemination of pESI-like mega plasmid carriage in an emerged *S. Infantis* clone was detected in four of the six MDR isolates. Genotypes from WGS showed high concordance with phenotype with overall sensitivity

and specificity of 95.31% and 100%, respectively. This study provides insight into the AMR profiles of a diversity of *Salmonella* serotypes isolated from retail meat products in California and highlights the value of routine retail food surveillance for the detection and characterization of AMR in foodborne pathogens.

Keywords: non-typhoidal *Salmonella enterica* (NTS), antimicrobial resistance, retail meat, phenotype, whole-genome sequencing (WGS), resistance genes, plasmid, public health surveillance

INTRODUCTION

Salmonella enterica is a Gram-negative, facultative anaerobic bacteria part of the *Enterobacteriaceae* family and a pathogen imparting significant global health burdens (Andino and Hanning, 2015). In the United States, non-typhoidal *Salmonella* (NTS) is a leading cause for foodborne illness and responsible for 1.35 million cases, 26,500 hospitalizations, and 420 deaths each year (Centers for Disease Control and Prevention [CDC], 2021). While infections are typically self-limiting, they can progress to systemic infection requiring clinical treatment particularly in infants, older individuals, and immunocompromised people (Foley and Lynne, 2008; Antunes et al., 2016). Furthermore, the emergence of antimicrobial-resistant *Salmonella* underscores a significant public health concern, with drug-resistant infections resulting in increased morbidities and mortalities stemming from longer duration and severity of disease and reduced treatment efficacy (Kurtz et al., 2017; Nair et al., 2018; Jajere, 2019).

While *Salmonella* is present in a large diversity of natural reservoirs, the vast majority of human salmonellosis infections arise from handling and consumption of contaminated food animal products (Callaway et al., 2008; Foley and Lynne, 2008; Andino and Hanning, 2015), attributed by poultry and livestock serving as major sources (Crump et al., 2015; Heredia and García, 2018). Emerged resistance to traditional antimicrobial agents such as ampicillin and trimethoprim-sulfamethoxazole has reduced treatment options and led to the empirical use of critically important antimicrobial drugs (Frasson et al., 2016). Fluoroquinolones (e.g., ciprofloxacin) and third-generation cephalosporins (e.g., ceftriaxone) are currently the primary treatment options for invasive salmonellosis, with the latter being an important alternative first-line treatment for pediatric infections due to the limited number of FDA-approved indications for fluoroquinolones in children (Jackson et al., 2016). Notably, antibiotics in these same drug classes are employed in veterinary medicine for treatment of food animals. While fluoroquinolone drugs have been withdrawn for use in poultry (Food and Drug Administration [FDA], 2017), enrofloxacin is currently approved for use in cattle and swine commonly for the treatment of respiratory diseases (Food and Drug Administration [FDA], 2021a). Additionally, ceftiofur—a veterinary third-generation cephalosporin drug—is used for treatment of respiratory disease in various livestock, bacterial infections in poultry, and for treatment of subclinical and clinical mastitis in dairy cattle (Food and Drug Administration [FDA], 2021a). While antimicrobial agents vastly improve health outcomes in human and veterinary medicine alike,

the ubiquity and magnitude of their usage have raised concerns on the consequences of selective pressures imposed for the emergence and dissemination of multidrug-resistant (MDR) pathogens. Antimicrobial resistance (AMR) in food animals has long been implicated as a source for resistant infections in humans, and it has become a priority public health effort to monitor the persistence and dissemination of drug-resistant pathogens such as NTS and their carriage of associated genetic determinants on the farm-to-fork continuum (Karp et al., 2017).

In the United States, the National Antimicrobial Resistance Monitoring System (NARMS) monitors AMR in enteric bacteria from animals, food, and humans (Food and Drug Administration [FDA], 2020a), including retail meat, which serves as a major conduit for MDR *Salmonella*. The epidemiology of AMR is dynamic and complex; with respect to resistance in NTS, it has been observed to be variable on a multitude of factors including serotype, source, and geographic location (Hoelzer et al., 2010; Hong et al., 2016; Nyirabahizi et al., 2020; Yin et al., 2021). The objective of this study was to characterize and assess the AMR profiles of *Salmonella* isolates recovered from fresh retail chicken, ground turkey, ground beef, and pork chop samples purchased in California over a 1-year period as part of routine NARMS surveillance. This study also utilized whole-genome sequencing (WGS) with the goal to identify the diversity of AMR genes conferring drug resistance and the carriage of genetic elements of significant public health concern.

MATERIALS AND METHODS

Study Area and Sampling

Samples in this study were collected as part of the routine NARMS retail meat testing program. From January to December 2018, a total of 958 fresh samples consisting of 478 skin-on/bone-in chicken, 240 ground turkey, 120 pork chop, and 120 ground beef were purchased from retail stores in California twice each month. Sampling locations were selected based on randomization of grocery stores by zip codes in northern (City and County of San Francisco, Contra Costa County, and Alameda County) and southern California (West Los Angeles, East Los Angeles, Ontario, and Irvine). A variety of meat types and cuts from different brands were purchased at each store. Packaging of samples in this study included modified atmospheric packaging (MAP), plastic bag, vacuum sealed, chub, paper wrapped, and plastic film packaging. Samples were transported on ice to the laboratory, refrigerated, and processed within 72 h of purchase.

Sample Processing and Bacterial Isolation

Samples were processed per the NARMS Retail Meat Surveillance protocol. Briefly, 25 g of each sample in 250 ml buffered peptone water (Becton Dickinson, Franklin Lakes, NJ, United States) was hand massaged for 3 min or placed on a mechanical shaker at 200 rpm for 15 min. Fifty milliliters of rinsate was added to 50 ml of double-strength lactose broth (Becton Dickinson, Franklin Lakes, NJ, United States) and incubated at 35°C for 24 h. After overnight enrichment, 0.1 ml of lactose broth was transferred to 9.9 ml Rappaport-Vassiliadis R10 (RVR10) broth (Becton Dickinson, Franklin Lakes, NJ, United States) and incubated at 42°C for 16–20 h. The RVR10 enrichments were then streaked onto XLT-4 (Remel, Lenexa, KS, United States) and Hektoen Enteric (Becton Dickinson, Franklin Lakes, NJ, United States) agars and incubated at 35°C for 18–24 h. Up to two suspect *Salmonella* colonies based on colony morphology from each selective agar were then streaked to purity on blood agar plates. Isolates were shipped on dry ice to the FDA's Center for Veterinary Medicine (CVM) for antimicrobial susceptibility testing and WGS.

Antimicrobial Susceptibility Testing

Salmonella isolates were tested using a broth microdilution method for 14 antimicrobial drugs using the NARMS Gram-negative plates (Thermo Fisher Scientific, Waltham, MA, United States) per standard protocols (Food and Drug Administration [FDA], 2016). Minimum inhibitory concentration (MIC) values for each drug were used to classify isolates based on the Clinical and Laboratory Standards Institute (CLSI) guidelines. NARMS consensus interpretive criteria were used for streptomycin and azithromycin, due to unavailability of CLSI breakpoints for these two drugs (Food and Drug Administration [FDA], 2021b). Breakpoints used to classify resistant isolates for each antimicrobial drug were as follows: amoxicillin/clavulanate ($\geq 32/16$ $\mu\text{g/ml}$), ampicillin (≥ 32 $\mu\text{g/ml}$), azithromycin (≥ 32 $\mu\text{g/ml}$), cefoxitin (≥ 32 $\mu\text{g/ml}$), ceftriaxone (≥ 4 $\mu\text{g/ml}$), chloramphenicol (≥ 32 $\mu\text{g/ml}$), ciprofloxacin (≥ 1 $\mu\text{g/ml}$), gentamicin (≥ 16 $\mu\text{g/ml}$), meropenem (≥ 4 $\mu\text{g/ml}$), nalidixic acid (≥ 32 $\mu\text{g/ml}$), streptomycin (≥ 32 $\mu\text{g/ml}$), sulfisoxazole (≥ 512 $\mu\text{g/ml}$), tetracycline (≥ 16 $\mu\text{g/ml}$), and trimethoprim-sulfamethoxazole ($\geq 4/76$ $\mu\text{g/ml}$). Phenotypic resistance was presented as resistant isolates, with intermediate and susceptible isolates grouped together for analysis. Multidrug resistance was defined as resistance to ≥ 1 drug in ≥ 3 antimicrobial classes (Magiorakos et al., 2012). Due to the significance of ciprofloxacin for salmonellosis treatment and the expansion of CLSI criteria for its intermediate susceptibility range, reduced susceptibility to ciprofloxacin was also noted (≥ 0.12 $\mu\text{g/ml}$) (Food and Drug Administration [FDA], 2021b).

Whole-Genome Sequencing

Salmonella isolates were streaked to blood agar plates, and pure colonies were extracted from overnight cultures per manufacturer's protocol using the Qiagen DNeasy Blood & Tissue Kit (Qiagen, Valencia, CA, United States). DNA purity and quantification was assessed using the NanoDrop and Qubit

fluorometer, respectively. Libraries were prepared using the Illumina Nextera XT kit per manufacturer's protocol with quality control and quantification done on the Bioanalyzer and Qubit. Final libraries were sequenced using v2 chemistry for 2×250 -bp paired end reads on the Illumina MiSeq platform. Sequences were demultiplexed, and adapters were removed using MiSeq Reporter. Read trimming and assembly were conducted as previously described (Tyson et al., 2015), with *de novo* assembly done using the CLC Genomics Workbench and genome annotation using NCBI's Prokaryotic Genome Automated Pipeline (Tyson et al., 2015). Species confirmation and serotyping were determined from WGS data per the FDA NARMS Manual of Laboratory Methods (Food and Drug Administration [FDA], 2016); SeqSero1 and SeqSero2 were used for serotyping with any discrepant isolates additionally serotyped according to the Kauffmann–White scheme (Food and Drug Administration [FDA], 2016; Zhang et al., 2019). Serotypes used for analysis correspond to the final serotype determinations submitted to NCBI as attributes with whole-genome sequences, which are deposited under BioProject PRJNA292661 (Supplementary Table 1).

Identification of Resistance Genes, Quinolone Resistance-Determining Region Mutations, and Plasmid Replicons

Resistance genes were identified from assemblies by methods previously described (Tyson et al., 2015), with Perl scripts used to identify hits ($\geq 85\%$ amino acid identity and $\geq 50\%$ sequence length) from a reference database of compiled genes from the ResFinder (Center for Genomic Epidemiology, DTU), ARG-ANNOT (IHU Méditerranée Infection), and CARD (McMaster University) public databases. Additionally, quinolone resistance-determining region (QRDR) mutations were assessed through extraction and analysis of the *gyrA*, *gyrB*, *parC*, and *parE* genes using ClustalW in MEGA (McDermott et al., 2016). Plasmid replicons were identified using PlasmidFinder (Center for Genomic Epidemiology), with hits determined as having $\geq 95\%$ identity and $\geq 60\%$ coverage.

Multilocus Sequence Typing and Minimum Spanning Trees

To assess the relationship between *Salmonella* isolates in this study, the PubMLST database¹ was used to determine the sequence type (ST) from WGS data for each isolate based on the seven-gene legacy multilocus sequence typing (MLST) loci for *Salmonella*: *aroC*, *dnaN*, *hemD*, *hisD*, *purE*, *sucA*, and *thrA*. MLST data was then used to generate and visualize minimum spanning trees using the Global Optimal eBURST (goeBURST) algorithm (Francisco et al., 2009) with PHYLOViZ (Francisco et al., 2012).

Data Analysis

A total of 43 *Salmonella* isolates from 41 retail meat samples were included in the analysis. Two isolates from a ground turkey and two from a ground beef sample were included due to more

¹<https://pubmlst.org/>

than one unique AMR phenotype profile recovered from each of these samples. Descriptive statistics (prevalence of *Salmonella*, distribution of covariates, and antimicrobial susceptibility testing results) and logistic regression models were conducted using SAS 9.4. The outcome binary variable for logistic regression was designated as the presence or absence of *Salmonella*, and the covariates included region of sample collection (northern and southern California), season, meat type, packaging, and label claim (conventional and reduced antibiotic use). Categorization of reduced antibiotic use included samples with packaging claims of organic and/or no antibiotic usage. All other samples with absence of organic or antibiotic claims were categorized as conventional. Univariate logistic regression was performed to determine the crude associations between the outcome and each covariate. A multivariable logistic regression model was then fitted using candidate variables with $p < 0.25$ from univariate analysis. The significance of all two-way interactions was tested, and the final model was selected based on the lowest Akaike's Information Criterion (AIC). Variable selection for the final model was also guided by the literature where associations between *Salmonella* and factors such as meat source have been previously substantiated. Given the smaller sample sizes present in this study, a significance level of $\alpha = 0.10$ was used to reduce the probability of a type II error. Genotype was considered concordant with phenotype when an isolate with phenotypic resistance to a drug had known resistance genes or mutations conferring resistance to the corresponding drug (true positive, TP) or when an isolate with phenotypic susceptibility to a drug had absence of resistance genes or mutations conferring resistance to the corresponding drug (true negative, TN). False negatives (FN) were defined as isolates that were phenotypically resistant but genotypically susceptible, and false positives (FP) were defined as isolates that were phenotypically susceptible but genotypically resistant. Sensitivity was calculated as $TP/(TP + FN)$ and specificity as $TN/(TN + FP)$. Matrices were created for phenotypic antimicrobial testing results and the presence/absence of resistance genes and plasmid replicons. A heatmap and hierarchical clustering were performed using the heatmap3 package in R, with dissimilarity matrices constructed using the Manhattan distance algorithm and clustered using the UPGMA method.

RESULTS

Isolation of *Salmonella* From Raw Retail Meat Products in California

Out of 958 retail meat products, *Salmonella* was isolated from 41 (4.28%) samples, with the highest recovery in ground turkey (14/240, 5.83%) followed by chicken (23/478, 4.81%), ground beef (2/120, 1.67%), and pork chops (2/120, 1.67%) (Table 1).

Factors Associated With *Salmonella* Contamination of Raw Retail Meat Products in California

Region of sample purchase (northern and southern CA), packaging type, and label claim were not significantly associated

with the recovery of *Salmonella*, with the final multivariable logistic regression model including season and meat type as significant covariates. Odds of *Salmonella* isolation was 3.70 (90% CI 1.05–13.07) times higher in ground turkey when compared to pork chops, adjusting for season. Adjusting for meat type, samples collected in the fall, spring, and summer months had a 6.47 (90% CI 2.29–18.27), 3.81 (90% CI 1.29–11.27), and 3.12 (90% CI 1.03–9.45) times higher odds of *Salmonella* contamination compared to those collected in the winter months, respectively (Table 1).

Distribution of *Salmonella* Serotypes and Multilocus Sequence Typing Profiles

From serotyping and MLST analysis, 14 distinct serotypes and 17 STs were identified (Table 2). The most frequently isolated serotypes were *S. Kentucky* (11/43, 25.58%) and *S. Reading* (8/43, 18.60%), with all *S. Kentucky* isolates recovered from chicken samples and all *S. Reading* isolates recovered from ground turkey. The remaining 12 serotypes displayed distinctive source trends, with exceptions of *S. Infantis* being recovered from three different meat types—chicken, ground turkey, and ground beef—and *S. Schwarzengrund* recovered from chicken and ground turkey (Table 2). Each serotype was associated with one ST, with the exception of *S. Kentucky* isolates, which were distributed across four different STs (Figure 1A). By source, ST32 isolates were recovered across different retail meats (Figure 1B). The greatest serotype and ST diversity was observed in isolates from chicken samples (Figure 1B), though the wide distribution of isolates overall is indicative of a high degree of diversity in genetic profiles across all *Salmonella* isolates recovered in this study (Figure 1).

Phenotypic Antimicrobial Resistance Profiles

All 43 of the *Salmonella* isolates in this study were susceptible to azithromycin, meropenem, and trimethoprim-sulfamethoxazole; 32.56% (14/43) of isolates were susceptible to all antimicrobials tested, 25.58% (11/43) were resistant to one drug, 27.91% (12/43) to two drugs, and 13.95% (6/43) to three or more antimicrobial drugs tested. The highest resistance was observed for tetracycline (17/43, 39.53%), followed by streptomycin (15/43, 34.89%) and ampicillin (10/43, 23.26%). Resistance to aminoglycoside drugs—gentamicin and streptomycin—were observed in chicken and ground turkey isolates, with over half of the isolates from chicken samples displaying resistance to streptomycin (12/23, 52.17%). Resistance to sulfonamides—sulfisoxazole—was only detected in chicken and ground turkey isolates (Table 3).

Resistance to all three beta-lactam combination agent drugs tested (amoxicillin-clavulanic acid, cefoxitin, and ceftriaxone) was observed in one chicken isolate. This was a *S. Kentucky* isolate resistant to beta-lactam/combination, aminoglycoside, and penicillin drug classes and one of the six MDR isolates identified in this study. The other five MDR isolates included four *S. Infantis* isolates recovered from a ground turkey ($n = 2$), a ground beef ($n = 1$), and a chicken ($n = 1$) sample and a *S. Reading* isolate from a ground turkey sample. Notably, four of the six MDR isolates (all *S. Infantis*) displayed resistance to

TABLE 1 | Prevalence and logistic regression models of risk factors for *Salmonella* in retail meat products from California.

Variable	Univariate models			Multivariable model	
	<i>Salmonella</i> positive n/N (%)	OR (90% CI)	P-value	OR (90% CI)	P-value
Region					
Northern CA	17/478 (3.56%)	0.70 (0.41–1.19)	0.272	–	–
Southern CA	24/480 (5.00%)	1.00			
Season					
Spring	11/240 (4.58%)	3.80 (1.29–11.20)	0.043 ^a	3.81 (1.29–11.27)	0.042 ^b
Summer	9/238 (3.78%)	3.11 (1.03–9.39)	0.092 ^a	3.12 (1.03–9.45)	0.091 ^b
Fall	18/240 (7.50%)	6.41 (2.27–18.07)	0.003 ^a	6.47 (2.29–18.27)	0.003 ^b
Winter	3/240 (1.25%)	1.00		1.00	
Meat type					
Chicken	23/478 (4.81%)	2.98 (0.88–10.15)	0.142 ^a	3.01 (0.88–10.27)	0.140
Ground turkey	14/240 (5.83%)	3.66 (1.04–12.85)	0.090 ^a	3.70 (1.05–13.07)	0.088 ^b
Ground beef	2/120 (1.67%)	1.00 (0.19–5.25)	1.000	1.00 (0.19–5.27)	1.000
Pork chop	2/120 (1.67%)	1.00		1.00	
Packaging type					
MAP (modified atmospheric packaging)	25/554 (4.51%)	1.31 (0.61–2.80)	0.563	–	–
Plastic bag	7/95 (7.37%)	2.20 (0.86–5.64)	0.168 ^a	–	–
Other (vacuum, chub, or paper)	3/137 (2.19%)	0.62 (0.19–2.01)	0.504	–	–
Plastic film	6/172 (3.49%)	1.00			
Label claim					
Conventional	29/624 (4.65%)	1.31 (0.74–2.33)	0.444	–	–
Reduced antibiotic claim	12/334 (3.59%)	1.00			

^aA $p = 0.25$ cut-off from univariate analysis was used for selection of candidate variables for multivariable analysis.

^bStatistically significant at $\alpha = 0.10$.

nalidixic acid and reduced susceptibility to ciprofloxacin, and resistance to ceftriaxone was only observed in MDR isolates (Tables 3, 4).

Five distinct antibiogram profiles were observed in MDR isolates, with two *S. Infantis* isolates displaying the tetra-resistant pattern ampicillin, ceftriaxone, tetracycline, and nalidixic acid in addition to reduced susceptibility to ciprofloxacin. In non-MDR isolates, the most common resistance patterns observed were streptomycin and tetracycline (STR-TET, $n = 6$) followed by sulfisoxazole and tetracycline (FIS-TET, $n = 4$) (Table 4).

Detection of Antimicrobial Resistance Genes and Plasmid Replicons

Among the 43 *Salmonella* isolates, 16 distinct antimicrobial genes and 17 plasmid replicons were identified. Resistance genes encoding all three types of aminoglycoside-modifying enzymes (AMEs)—acetyltransferases (*aac(6′)-Iaa* and *aac(3′)-IVa*), nucleotidyltransferases (*ant(3′)-Ia*), and phosphotransferases (*aph(3′)-Ib*, *aph(6′)-Id*, *aph(3′)-Ia*, and *aph(4′)-Ia*)—were detected in this study. Beta-lactamase genes detected included *bla_{TEM-1C}* and extended spectrum beta-lactamase (ESBL) *bla_{CTX-M-65}* from class A and AmpC-type *bla_{CMY-33}* from class C. Quinolone resistance-mediating genes detected included a mutation of the QRDR of *gyrA* (D87Y). No plasmid-mediated quinolone resistance (PMQR) genes were detected. Other genes detected included those encoding resistance to tetracycline (*tetA* and *tetB*), sulfonamide (*sul1* and *sul2*), and florfenicol-chloramphenicol

(*floR*). Eighty-six percent (37/43) of isolates carried at least one plasmid replicon, 55.8% (24/43) carried two or more, and 39.5% (17/43) carried three or more. The most commonly detected plasmids were ColpVC (16/43, 37.21%), IncX1 (12/43, 27.91%), IncI1 (10/43, 23.26%), and IncFIB(AP001918) (9/43, 20.93%). The distribution of all AMR genes and plasmid replicons is presented in Figure 2.

Correlation Between Genotype and Phenotype

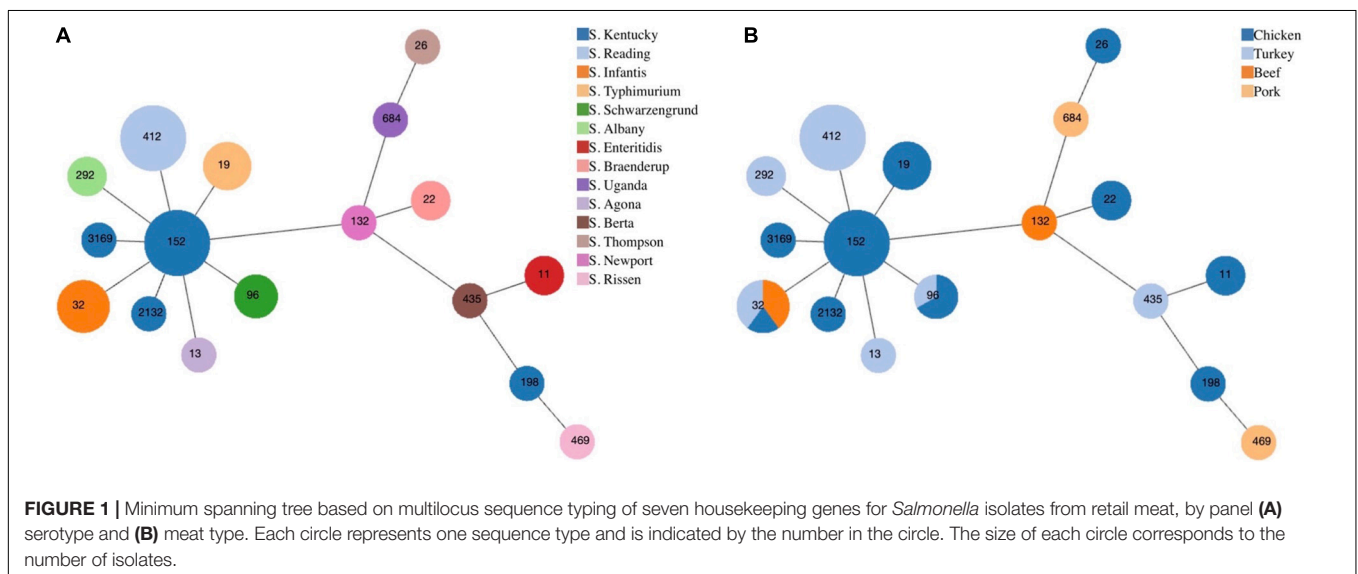
In this study, resistance genes identified from WGS correlated with phenotypic testing results with an overall sensitivity and specificity of 95.31% and 100%, respectively. Sensitivity was not calculated for azithromycin, meropenem, trimethoprim-sulfamethoxazole, and ciprofloxacin, due to the absence of resistant isolates to these drugs. Discrepancies were present in aminoglycosides, in which two of the three gentamicin-resistant isolates and one of the 15 streptomycin-resistant isolates did not carry resistance-conferring genes, resulting in a sensitivity of 33.33% and 93.33% respectively, for these drugs (Table 5).

Hierarchical Clustering of *Salmonella* Isolates by Phenotype, Genotype, and Plasmid Replicon Profiles

Hierarchical clustering of *Salmonella* isolates depicts the co-occurrence of specific AMR profiles and plasmid replicon

TABLE 2 | Distribution of serotypes and multilocus sequence typing patterns for *Salmonella* isolates ($n = 43$).

Serotype	Retail meat types (no. of isolates)				Total n/N (%)	MLST pattern							
	Chicken ($n = 23$)	Ground turkey ($n = 15$)	Ground beef ($n = 3$)	Pork ($n = 2$)		<i>aroC</i>	<i>dnaN</i>	<i>hemD</i>	<i>hisD</i>	<i>purE</i>	<i>sucA</i>	<i>thrA</i>	ST
<i>S. Agona</i>	0	1	0	0	1/43 (2.33%)	3	3	7	4	3	3	7	13
<i>S. Albany</i>	0	2	0	0	2/43 (4.65%)	104	100	54	78	104	9	48	292
<i>S. Berta</i>	0	1	0	0	1/43 (2.33%)	2	2	3	124	2	6	6	435
<i>S. Braenderup</i>	2	0	0	0	2/43 (4.65%)	12	2	15	14	11	14	16	22
<i>S. Enteritidis</i>	2	0	0	0	2/43 (4.65%)	5	2	3	7	6	6	11	11
<i>S. Infantis</i>	1	2	2	0	5/43 (11.63%)	17	18	22	17	5	21	19	32
<i>S. Kentucky</i>	8	0	0	0	11/43 (25.58%)	62	53	54	60	5	53	54	152
	1	0	0	0		62	53	54	60	636	53	54	3,169
	1	0	0	0		76	14	3	77	64	64	67	198
	1	0	0	0		62	53	54	60	508	53	54	2,132
<i>S. Newport</i>	0	0	1	0	1/43 (2.33%)	2	57	15	14	15	20	12	132
<i>S. Reading</i>	0	8	0	0	8/43 (18.60%)	11	10	25	13	10	58	4	412
<i>S. Rissen</i>	0	0	0	1	1/43 (2.33%)	92	107	79	156	64	151	87	469
<i>S. Schwarzengrund</i>	2	1	0	0	3/43 (6.98%)	43	47	49	49	41	15	3	96
<i>S. Thompson</i>	1	0	0	0	1/43 (2.33%)	14	13	18	12	14	18	1	26
<i>S. Typhimurium</i>	4	0	0	0	4/43 (9.30%)	10	7	12	9	5	9	2	19
<i>S. Uganda</i>	0	0	0	1	1/43 (2.33%)	147	13	15	123	15	19	17	684



types by serotype and source of isolates. The row dendrogram produced three notable clusters based on isolate-specific profiles. Cluster A corresponds to over half of the *S. Reading* isolates in this study, with the five isolates in this cluster all ampicillin resistant through carriage of a *bla*_{TEM-1C} gene and displaying intermediate resistance to amoxicillin-clavulanic acid. Three of the four *S. Typhimurium* isolates in this study were presented in cluster B, sharing chicken source and phenotypic resistance to sulfisoxazole and tetracycline conferred through *sul2* and *tetA* genes, respectively. Cluster C included the *S. Kentucky* isolates resistant to streptomycin and tetracycline ($n = 7$), with resistance conferred through *aph(3')-Ib* (*strA*) and *aph(6')-Id*

(*strB*), and the other tetracycline gene detected in this study, *tetB* (Figure 3).

Main clusters from the column dendrogram depict the co-occurrence of phenotypes, AMR genes, and plasmid replicons. Inc11, IncX1, and IncFIB(AP001918) replicons were detected primarily in tetracycline (*tetB*) and streptomycin (*aph(6')-Id* and *aph(3')-Ib*) resistant *S. Kentucky* isolates (cluster D). The Col440II and ColpVC replicons were detected in ampicillin-resistant and amoxicillin-clavulanic acid intermediate-resistant *S. Reading* isolates with carriage of *bla*_{TEM-1C} (cluster E). IncC and ColpHAD28 replicons were detected in tetracycline (*tetA*)

TABLE 3 | Percentage of *Salmonella* isolates resistant to antimicrobials from phenotypic susceptibility testing, by retail meat type.

CLSI class	Antimicrobial rank ^a	Antimicrobial agent	Chicken (n = 23)	Ground turkey (n = 15) ^b	Ground beef (n = 3) ^c	Pork (n = 2)	Total n/N (%)
Aminoglycosides	1	GEN	1 (4.35%)	2 (13.33%)	0	0	3/43 (6.88%)
	1	STR	12 (52.17%)	3 (20.00%)	0	0	15/43 (34.89%)
B-lactam combination agents	1	AMC	1 (4.35%)	0	0	0	1/43 (2.33%)
Cephems	2	FOX	1 (4.35%)	0	0	0	1/43 (2.33%)
Folate pathway antagonists	1	AXO	1 (4.35%)	2 (13.33%)	1 (33.33%)	0	4/43 (9.30%)
	2	FIS	5 (21.74%)	2 (13.33%)	0	0	7/43 (16.28%)
Macrolides	2	COT	0	0	0	0	0/43 (0%)
	1	AZI	0	0	0	0	0/43 (0%)
Penems	1	MER	0	0	0	0	0/43 (0%)
Penicillins	1	AMP	1 (4.35%)	8 (53.34%)	1 (33.33%)	0	10/43 (23.26%)
Phenicol	2	CHL	1 (4.35%)	0	0	0	1/43 (2.33%)
Quinolones	1	NAL	1 (4.35%)	2 (13.33%)	2 (66.67%)	0	5/43 (11.63%)
	1	CIP ^d	2 (8.70%) ^d	2 (13.33%) ^d	2 (66.67%) ^d	0	6/43 (13.95%) ^d
Tetracyclines	2	TET	12 (52.17%)	3 (20.00%)	1 (33.33%)	1 (50.0)	17/43 (39.53%)

Meat type with the highest percentage of resistant isolates for each drug is rendered in bold.

^aRank based on the WHO categorization of antimicrobials of critical importance to human medicine.

^bTwo isolates with different phenotypic profiles were included from one ground turkey sample.

^cTwo isolates with different phenotypic profiles were included from one ground beef sample.

^dResults presented for ciprofloxacin (CIP) are for intermediate susceptibility.

GEN, gentamicin; STR, streptomycin; AMC, amoxicillin-clavulanic acid; FOX, cefoxitin; AXO, ceftriaxone; FIS, sulfisoxazole; COT, trimethoprim-sulfamethoxazole; AZI, azithromycin; MER, meropenem; AMP, ampicillin; CHL, chloramphenicol; NAL, nalidixic acid; CIP, ciprofloxacin; TET, tetracycline.

and sulfisoxazole-resistant (*sul2*) *S. Typhimurium* isolates (cluster F). Lastly, the IncFIB(pN55391) plasmid replicon was detected in MDR *S. Infantis* isolates exhibiting third-generation cephalosporin (ceftriaxone, *bla*_{CTX-M-65}) and quinolone (nalidixic acid, *gyrA* mutation) resistance and fluoroquinolone reduced susceptibility (ciprofloxacin, *gyrA* mutation) (cluster G).

DISCUSSION

Despite improvements to regulatory and farm-to-fork practices in biosecurity, animal husbandry, and HACCP standards, NTS remains a leading pathogen responsible for foodborne illness in the United States. Control and elimination of *Salmonella* in retail meat products are challenging, with food animals serving as perpetual vectors and reservoirs through clinical disease and as asymptomatic carriers, contamination of farm environments, and vertical and horizontal transmission (Jajere, 2019). Though a high proportion of *Salmonella* isolates from food animal origins are pan susceptible, the presence of multiple drug-resistant phenotypes in these isolates remains comparably high relative to that in human clinical isolates, where resistance has remained relatively stable in the past decade (Food and Drug Administration [FDA], 2020b). The persisting recurrence of *Salmonella* outbreaks traced to food animal products and evidence for the emergence, evolution, and dissemination of drug-resistant strains emphasize the importance of active surveillance of AMR in foodborne pathogens. Here, we provide an insight on the presence of *Salmonella* in retail meat products purchased

in California and the corresponding AMR phenotypic and genotypic profiles.

Salmonella Contamination of Retail Meat Products

In this study, we observed similar frequencies of *Salmonella* contamination in fresh retail meat products purchased in California (4.3%) compared to the national average from routine NARMS surveillance in the same year (4.0%, 2018) (Food and Drug Administration [FDA], 2020b). A comparison of prevalence findings from different studies should be assessed with caution, as variability in sample collection methods, location, time, and isolation protocols may affect results. Nevertheless, our results here are consistent with previous findings of poultry products being more frequently contaminated with *Salmonella* than other meat types (Jørgensen et al., 2002; Hyeon et al., 2011; Kim et al., 2012; Li et al., 2020) due to the high-frequency colonization and carriage of *Salmonella* in the microbiome of healthy poultry animals (Antunes et al., 2016). The highest recovery of *Salmonella* in our study was in ground turkey (14/240, 5.83%) followed by chicken (23/478, 4.81%) samples, likely due to ground poultry counterparts requiring additional processing steps, which increase opportunities for cross-contamination.

The highest recovery of *Salmonella* from retail meats was observed in fall months in this study. While a previous study also found greater prevalence in fall months (Xu et al., 2020), overall findings have been inconsistent with respect to seasonality trends (Zhao et al., 2001; Zdragas et al., 2012; Wang et al., 2014; Erickson et al., 2018). It has been suggested that temporal trends may occur by year as opposed to season (Sivaramalingam et al., 2013)

TABLE 4 | Antimicrobial resistance (AMR) patterns of *Salmonella* serotypes resistant to one or more antimicrobial drugs from retail meat in California, 2018^{a-d}.

Serotype		Antimicrobial pattern (no. of isolates)
Name	No. of isolates n/N (%) ^b	
S. Albany	2/43 (4.65%)	GEN (<i>n</i> = 1) GEN-STR (<i>n</i> = 1)
S. Infantis	5/43 (11.63%)	NAL-CIP ^c (<i>n</i> = 1) ^e AMP-AXO-NAL-TET-CIP^c (<i>n</i> = 2)^{e,f} AMP-AXO-NAL-STR-FIS-TET-CIP^c (<i>n</i> = 1)^f CHL-GEN-NAL-STR-FIS-TET-CIP^c (<i>n</i> = 1)
S. Kentucky	9/43 (20.93%)	STR (<i>n</i> = 1) STR-TET (<i>n</i> = 6) STR-TET-CIP ^c (<i>n</i> = 1) AMC-AMP-FOX-AXO-STR (<i>n</i> = 1)
S. Reading	6/43 (13.95%)	AMP (<i>n</i> = 5) AMP-STR-FIS-TET (<i>n</i> = 1)
S. Rissen	1/43 (2.33%)	TET (<i>n</i> = 1)
S. Schwarzengrund	2/43 (4.65%)	STR (<i>n</i> = 2)
S. Typhimurium	4/43 (9.30%)	FIS-TET (<i>n</i> = 4)
Total	29/43 (67.44%)	–

Multidrug-resistant isolates are rendered in bold.

^aIsolates from the following serotypes not listed were susceptible to all 14 antibiotics tested: *S. Agona* (*n* = 1), *S. Berta* (*n* = 1), *S. Braenderup* (*n* = 2), *S. Enteritidis* (*n* = 2), *S. Kentucky* (*n* = 2), *S. Newport* (*n* = 1), *S. Reading* (*n* = 2), *S. Schwarzengrund* (*n* = 1), *S. Thompson* (*n* = 1), and *S. Uganda* (*n* = 1).

^bPercentages calculated as number of isolates resistant to one or more antimicrobial drugs to the total number of *Salmonella* isolates in the study.

^cCiprofloxacin (CIP) in antimicrobial patterns indicates intermediate susceptibility.

^dMultidrug resistance (MDR) was defined as resistance to ≥ 1 drug in ≥ 3 antimicrobial classes.

^eIsolates were recovered from the same ground beef sample.

^fIsolates were recovered from the same ground turkey sample.

GEN, gentamicin; STR, streptomycin; AMC, amoxicillin-clavulanic acid; FOX, cefoxitin; AXO, ceftriaxone; FIS, sulfisoxazole; COT, trimethoprim-sulfamethoxazole; AZI, azithromycin; MER, meropenem; AMP, ampicillin; CHL, chloramphenicol; NAL, nalidixic acid; CIP, ciprofloxacin; TET, tetracycline.

and that the discordances in observed seasonal contamination of *Salmonella* in food products are likely confounded by other contributing factors from production, processing, and distribution processes that serve as primary drivers of pathogen contamination and proliferation. From a food safety perspective, this contrasts with the seasonality trends observed in incidences of human salmonellosis, which has been associated with factors such as temperature and oscillations in human activity (e.g., increased consumption of meat products during certain times of the year) rather than differences in the frequency of retail meat contamination itself (Ravel et al., 2010).

Distribution of *Salmonella* Serotypes and Antimicrobial Resistance Profiles

An important facet to *Salmonella* epidemiology is the fluctuating significance, distribution, and AMR profiles of serotypes over time. *Salmonella* serotypes by nature display host specificity and varied pathogenicity for human and animal hosts depending on

their degree of adaptation (Jajere, 2019). Common serotypes that have been associated with foodborne disease have been broad-spectrum host adapted such as *S. Enteritidis*, *S. Typhimurium*, and the monophasic *S. Typhimurium* variant *S. 1,4,[5],12:i:-* (Yang et al., 2015; Antunes et al., 2016; Jajere, 2019; Mandilara et al., 2021).

The two *S. Enteritidis* and four *S. Typhimurium* isolates recovered in this study were all from retail chicken products, of which both *S. Enteritidis* isolates were susceptible to all 14 antibiotics tested and the four *S. Typhimurium* isolates displayed resistance to two drugs, tetracycline and sulfisoxazole. Tetracycline and sulfonamides are two major classes of antibiotics that have been conventionally utilized for prophylactic and therapeutic treatment of food animals (Granados-Chinchilla and Rodríguez, 2017). Tetracycline is a broad-spectrum bacteriostatic agent that was traditionally widely administered to poultry flocks through drinking water and feed (Chopra and Roberts, 2001). As of January 2017, its application in feed has been limited to therapeutic use through a requirement of the Veterinary Feed Directive (Granados-Chinchilla and Rodríguez, 2017). Despite this restriction, the highest frequency of resistance in our study was to tetracycline (17/43, 39.5%), driven by the proportionately large number of resistant chicken isolates (12/23, 52.2%). We observe a similar trend in streptomycin (15/43, 34.9%) due to the high level of resistance across all serotypes from chicken isolates (12/23, 52.2%). Streptomycin is another drug that is historically used in food-producing animals and serves as both an indicator for aminoglycoside resistance in the food supply chain (McDermott et al., 2016; Wang et al., 2019) and an epidemiologic marker for presence of penta resistance to ampicillin, chloramphenicol, streptomycin, sulfonamide, and tetracycline (ACSSuT), a pattern observed in widely disseminated virulent and MDR strains like *S. Typhimurium* DT104 and U302 (Yu et al., 2008). The third most frequent resistant drug observed in our study was ampicillin (10/43, 23.3%) attributed by ground turkey isolates (8/15, 53.3%), which is consistent to the routinely higher level of ampicillin resistance detected through NARMS surveillance in retail turkey isolates (35.5%, 2018) relative to those from retail chicken, beef, and pork (Food and Drug Administration [FDA], 2020b, 2021c; Singer et al., 2020). Lastly, the detection of four MDR *S. Infantis* isolates from retail chicken, ground turkey, and ground beef products in our study mirrors NARMS surveillance findings from the last few years in which the rise in MDR *Salmonella* from retail meats is attributed by a marked increase in MDR *S. Infantis* superseding other leading resistant serotypes (Food and Drug Administration [FDA], 2021c; Tyson et al., 2021).

Whole-Genome Sequencing for Prediction of Antimicrobial Resistance

Increasing affordability and improved turnaround time for WGS have vastly improved the resolution of foodborne bacteria profiling and allowed for its integration in routine surveillance efforts as done here in this study. In particular, its utility for identification of resistance mechanisms provides the genotypic basis for *in silico* predictions of phenotypic resistance including

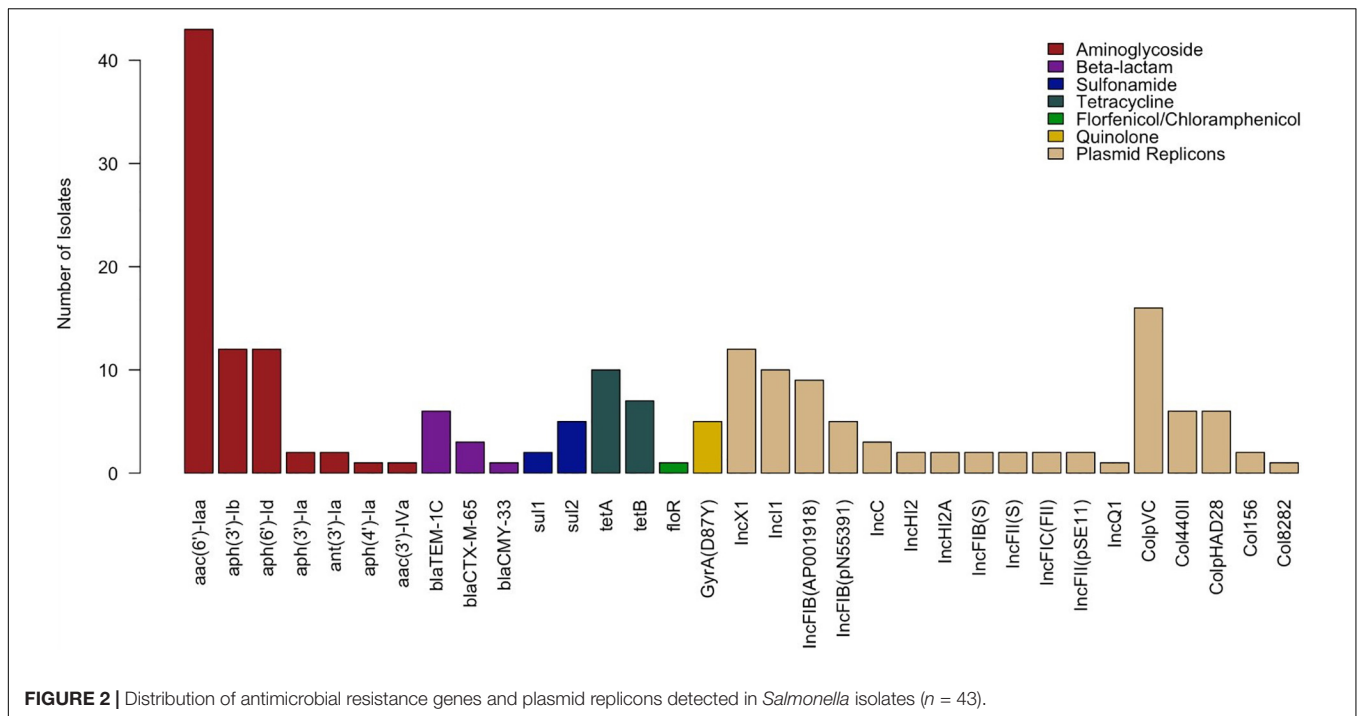


FIGURE 2 | Distribution of antimicrobial resistance genes and plasmid replicons detected in *Salmonella* isolates ($n = 43$).

TABLE 5 | Evaluation of genotype prediction of phenotypic resistance.

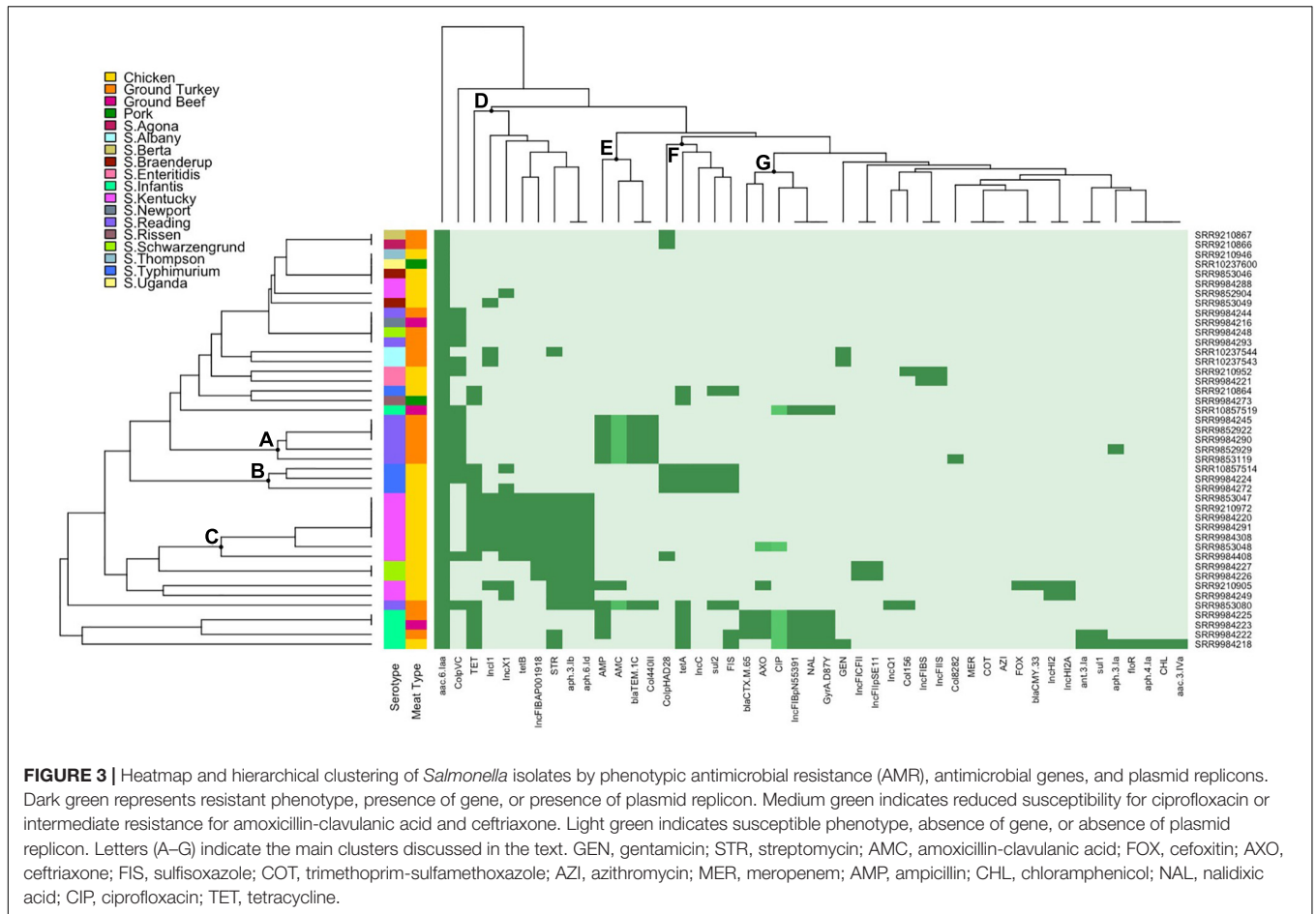
CLSI class	Antimicrobial agent	Phenotype: susceptible (no. of isolates)		Phenotype: resistant (no. of isolates)		Sensitivity ^b (%)	Specificity ^c (%)
		Genotype: resistant (FP) ^a	Genotype: susceptible (TN) ^a	Genotype: resistant (TP) ^a	Genotype: susceptible (FN) ^a		
Aminoglycosides	GEN	0	40	1	2	33.33	100
	STR	0	28	14	1	93.33	100
B-lactam combination agents	AMC	0	42	1	0	100	100
	FOX	0	42	1	0	100	100
Cephems	AXO	0	39	4	0	100	100
	FIS	0	36	7	0	100	100
Folate pathway antagonists	COT	0	43	0	0	N/A ^d	100
	AZI	0	43	0	0	N/A ^d	100
Macrolides	MER	0	43	0	0	N/A ^d	100
Penems	AMP	0	33	10	0	100	100
Phenicols	CHL	0	42	1	0	100	100
Quinolones	NAL	0	38	5	0	100	100
	CIP	0	43	0	0	N/A ^d	100
Tetracyclines	TET	0	26	17	0	100	100
Overall		0	538	61	3	95.31	100

^aFP, false positive; TN, true negative; TP, true positive; FN, false negative. ^bSensitivity was calculated as $TP/(TP + FN)$. ^cSpecificity was calculated as $TN/(TN + FP)$.

^dSensitivity could not be calculated because none of the isolates were resistant to these drugs. GEN, gentamicin; STR, streptomycin; AMC, amoxicillin-clavulanic acid; FOX, cefoxitin; AXO, ceftriaxone; FIS, sulfisoxazole; COT, trimethoprim-sulfamethoxazole; AZI, azithromycin; MER, meropenem; AMP, ampicillin; CHL, chloramphenicol; NAL, nalidixic acid; CIP, ciprofloxacin; TET, tetracycline.

resistance for drugs that are not included in routine testing (McDermott et al., 2016; Su et al., 2019; NIHR Global Health Research Unit on Genomic Surveillance of AMR, 2020). Despite the small number of isolates in this study and the large proportion that are susceptible, our findings here affirm

results from previous studies that demonstrated the robust capacity of WGS for prediction of phenotypic resistance in *Salmonella* and other bacterial species (Tyson et al., 2015, 2018; McDermott et al., 2016; Neuert et al., 2018). For the 43 *Salmonella* isolates here, WGS data predicted phenotypic



results with an overall sensitivity and specificity of 95.31% and 100%, respectively.

The three discordant isolates resulting in lowered sensitivity were observed for gentamicin and streptomycin, attributed by phenotypic resistance in the absence of detected resistance genes. One potential explanation is that genes may not have been present when a colony was sequenced at a different time from when phenotypic testing was performed, but moreover, the imperfect correlation observed here presents a few important considerations. First, concordant genotypic prediction of phenotypic resistance is reliant on the recommended breakpoints used for classification of isolates. False classification of phenotypic results can occur when MIC values fall just below or above a breakpoint and/or in instances where interpretation of MICs is based on alternative guidelines like NARMS consensus interpretative criteria in the absence of available CLSI criteria. This is a likely explanation for the discordant streptomycin results observed here and previous studies (Tyson et al., 2015, 2018; McDermott et al., 2016; Neuert et al., 2018; Pornsukarom et al., 2018), as streptomycin is a drug traditionally used for food animals but not in the treatment of enteric infections and therefore lacks defined CLSI clinical breakpoints (McDermott et al., 2016; Wang et al., 2019). Secondly, in instances where interpretative

criteria are available, alternative use of different breakpoints for classification can also affect concordance of WGS results with phenotype. For instance, specificity for ciprofloxacin in this study was fully concordant only when using CLSI breakpoints for resistance ($\geq 1 \mu\text{g/ml}$). The CLSI breakpoint for reduced ciprofloxacin susceptibility ($\geq 0.12 \mu\text{g/ml}$) is currently used as an alternative criterion for classification of resistance to capture emerging fluoroquinolone resistance (Food and Drug Administration [FDA], 2021b). Traditionally, resistance to fluoroquinolones is conferred through one or more chromosomal mechanisms mediated by mutations in the QRDRs of target enzymes DNA gyrase (*gyrA* and *gyrB*) and topoisomerase IV (*parC* and *parE*) (Hooper and Jacoby, 2016). For ciprofloxacin, resistance is observed to be conferred in combinations of mutations within both *gyrA* and *parC* (Redgrave et al., 2014; Neuert et al., 2018). Five isolates in this study exhibited reduced susceptibility, but classification of these isolates as resistant would have resulted in lowered specificity—88.37% (38/43) instead of 100%—as these isolates only carried a single *gyrA* mutation. Lastly, WGS predictions of phenotypic resistance are as robust as our ability to identify the genetic determinants that confer resistance. This highlights the impact of reference database(s) selection, importance of active curation and inclusion of novel genes to ensure database

comprehensiveness, and an unavoidable caveat of relying on WGS approaches when unknown resistance mechanisms cannot be detected.

Co-occurrence of Resistance Profiles and Plasmid Replicons by Serotype and Source

Although the significance of the associations between serotypes and the presence/absence of AMR genes and plasmid replicons could not be assessed due to the small number of isolates recovered for each serotype, results here are congruent with other studies that have reported co-occurrence of certain plasmid(s) and AMR genes with serotype (Mather et al., 2013; Pornsukarom et al., 2018; Zhao et al., 2020). It should be noted that while the presence of a plasmid replicon is likely indicative of the corresponding plasmid type, it is possible that the replicon type may have been chromosomally integrated or co-integrated on plasmids with multiple replicons (Johnson et al., 2007; McMillan et al., 2020). Such occurrences are considered rare, and the detection of plasmid replicons as done here presents a quick and efficient way to screen for the presence of putative plasmids.

In this study, we identified several plasmid replicons previously detected in *Salmonella* that are associated with resistance. IncX1 and IncI1 are two incompatibility groups frequently distributed in *Enterobacteriaceae*, with the latter frequently found in *Salmonella* from food animal sources (Kaldhone et al., 2019), as evident through the *S. Kentucky* isolates from chicken samples in this study. IncC (formerly grouped as IncA/C) plasmids are also frequently prevalent in pathogenic *Enterobacteriaceae* and are associated with *bla_{CMY}* and *bla_{NDM}* genes (Hancock et al., 2017; Ambrose et al., 2018), though here we observed their co-occurrence with *sul2* and *tetA* genes in *S. Typhimurium* isolates from chicken. In *S. Reading* turkey isolates from this study, we detected the Col440II replicon and *bla_{TEM-1C}*. Carriage of *bla_{TEM-1C}* on Col440II was first detected in a *S. Hadar* turkey isolate in 2007, where thereafter detection of this plasmid with *bla_{TEM-1C}* was reported in *S. Reading* in 2014, also from a turkey source (Miller et al., 2020). Recently, *S. Reading* isolates with this plasmid were identified in an emerged clade linked to United States and Canadian outbreaks from live turkeys and raw turkey products, including one which occurred during our 2018 study period (November 2017 to March 2019) (Centers for Disease Control and Prevention [CDC], 2019; Hassan et al., 2019; Miller et al., 2020). The genomic investigation of isolates from clinical, meat product, environmental, and animal sources from Miller et al. indicated that a novel clone of *S. Reading* emerged and disseminated across North America in parallel to expansion of commercial turkey production, likely through vertical transmission from a common source (Miller et al., 2020). Detection of turkey isolates with the distinguishing carriage of Col440II and *bla_{TEM-1C}* gene here supports their findings and highlights the value of integrated surveillance in detection and elucidation of emerging microbial hazards in the food supply chain.

Another public health concern to note from this study is the detection of the IncFIB(pN55391) plasmid replicon among four MDR *S. Infantis* isolates. The IncFIB(pN55391) plasmid was first detected in MDR, ESBL-producing *S. Infantis* strains in Israel, where thereafter rapid clonal expansion resulted in its worldwide dissemination (Franco et al., 2015; Hindermann et al., 2017; Alba et al., 2020; Garcia-Soto et al., 2020). To date, MDR ESBL-producing *S. Infantis* has been reported across the United States in humans, food animals, and—as evidenced here and in previous studies—retail meats (Tate et al., 2017; Brown et al., 2018; Alba et al., 2020; M'ikanatha et al., 2021; Tyson et al., 2021). In the past few years, NARMS surveillance has reported a rise in resistant *Salmonella* isolates from retail meats, which is attributed to increasing numbers of MDR *S. Infantis* (Tyson et al., 2021). Dissemination of *S. Infantis* with ESBL carriage on a large conjugative plasmid as indicated by four of the five isolates carrying *bla_{CTX-M-65}* in this study is concerning due to its potential to disseminate resistance genetic elements to other pathogens and the challenges in treating infections exhibiting resistance to penicillins, extended-spectrum cephalosporins, monobactams, and other drugs conferred through MDR status (Tate et al., 2017; M'ikanatha et al., 2021).

CONCLUSION

Despite the relatively low frequency of *Salmonella* contamination observed in retail meat products in this study, the diversity of serotypes and AMR profiles present in the isolates recovered highlights the risk of retail meat products as reservoirs and conduits for drug-resistant NTS. Findings here also demonstrate the complementary role of WGS with phenotypic testing for the high-resolution profiling of foodborne pathogens. Moreover, this study sheds light on the importance of surveillance for the assessment of emerging and circulating AMR hazards and the need to continue these efforts to best guide intervention measures for AMR mitigation across farm-to-fork interfaces.

DATA AVAILABILITY STATEMENT

The datasets presented in this study can be found in online repositories. The names of the repository/repositories and accession number(s) can be found in the article/Supplementary Material.

AUTHOR CONTRIBUTIONS

KL, EA, MP, and XL conceptualized the study. KL, AH, MR, MS, and MH-F performed the laboratory analysis. KL, AH, KLa, MR, MS, and MH-F curated the data. KL analyzed the data and contributed in the writing—original draft preparation. KL, EA, and XL performed the methodology. EA, MP, and XL gathered resources. MP, EA, AH, KLa, XL, MR, MS, and MH-F contributed in the writing—review and editing. All authors contributed to the article and approved the submitted version.

FUNDING

This work was made possible, in part, by the U.S. Food and Drug Administration through grants 1U01FD006248-01 and 5U01FD0005796-03. The Article Processing Charge (APC) was partially funded by the UC Davis Open Access Fund (UCD-OAF).

ACKNOWLEDGMENTS

We thank Alonna Wright and Jessica Vandeleest for their technical support; Alec Michael, Jennifer Chase, Sophie Zhu,

and Todd Kelman for their feedback; and the Center for Veterinary Medicine of the Food and Drug Administration for performing and sharing results from serotyping, antimicrobial susceptibility testing, and whole-genome sequencing of *Salmonella* isolates.

SUPPLEMENTARY MATERIAL

The Supplementary Material for this article can be found online at: <https://www.frontiersin.org/articles/10.3389/fmicb.2022.835699/full#supplementary-material>

REFERENCES

- Alba, P., Leekitcharoenphon, P., Carfora, V., Amoroso, R., Cordaro, G., Di Matteo, P., et al. (2020). Molecular epidemiology of *Salmonella* infantis in Europe. *Microb. Genom.* 6:e000365. doi: 10.1099/mgen.0.000365
- Ambrose, S. J., Harmer, C. J., and Hall, R. M. (2018). Evolution and typing of IncC plasmids contributing to antibiotic resistance in Gram-negative bacteria. *Plasmid* 99, 40–55. doi: 10.1016/j.plasmid.2018.08.001
- Andino, A., and Hanning, I. (2015). *Salmonella enterica*: survival, colonization, and virulence differences among serovars. *Sci. World J.* 2015:520179. doi: 10.1155/2015/520179
- Antunes, P., Mourão, J., Campos, J., and Peixe, L. (2016). Salmonellosis: the role of poultry meat. *Clin. Microbiol. Infect.* 22, 110–121. doi: 10.1016/j.cmi.2015.12.004
- Brown, A. C., Chen, J. C., Watkins, L. K. F., Campbell, D., Folster, J. P., Tate, H., et al. (2018). CTX-M-65 extended-spectrum β -Lactamase-producing *Salmonella enterica* Serotype Infantis, United States. *Emerg. Infect. Dis.* 24, 2284–2291. doi: 10.3201/eid2412.180500
- Callaway, T. R., Edrington, T. S., Anderson, R. C., Byrd, J. A., and Nisbet, D. J. (2008). Gastrointestinal microbial ecology and the safety of our food supply as related to *Salmonella*. *J. Anim. Sci.* 86(14 Suppl.), E163–E172. doi: 10.2527/jas.2007-0457
- Centers for Disease Control and Prevention [CDC] (2019). *Outbreak of Multidrug-Resistant Salmonella Infections Linked to Raw Turkey Products*. Available online at: <https://www.cdc.gov/salmonella/reading-07-18/index.html> (accessed July 27, 2021).
- Centers for Disease Control and Prevention [CDC] (2021). *Salmonella*. Available online at: <https://www.cdc.gov/salmonella/index.html> (accessed July 27, 2021).
- Chopra, I., and Roberts, M. (2001). Tetracycline antibiotics: mode of action, applications, molecular biology, and epidemiology of bacterial resistance. *Microbiol. Mol. Biol. Rev.* 65, 232–260. doi: 10.1128/MMBR.65.2.232-260.2001
- Crump, J. A., Sjölund-Karlsson, M., Gordon, M. A., and Parry, C. M. (2015). Epidemiology, clinical presentation, laboratory diagnosis, antimicrobial resistance, and antimicrobial management of invasive *Salmonella* infections. *Clin. Microbiol. Rev.* 28, 901–937. doi: 10.1128/CMR.00002-15
- Erickson, A. K., Murray, D. L., Ruesch, L. A., Thomas, M., Lau, Z., and Scaria, J. (2018). Genotypic and phenotypic characterization of *Salmonella* isolated from fresh ground meats obtained from retail grocery stores in the brookings, South Dakota, Area. *J. Food Prot.* 81, 1526–1534. doi: 10.4315/0362-028X.JFP-18-076
- Foley, S. L., and Lynne, A. M. (2008). Food animal-associated *Salmonella* challenges: pathogenicity and antimicrobial resistance. *J. Anim. Sci.* 86(14 Suppl.), E173–E187. doi: 10.2527/jas.2007-0447
- Food and Drug Administration [FDA] (2016). *The National Antimicrobial Resistance Monitoring System Manual of Laboratory Methods*. Available online at: <https://www.fda.gov/media/101423/download> (accessed July 27, 2021).
- Food and Drug Administration [FDA] (2017). *Withdrawal of Enrofloxacin for Poultry*. Available online at: <https://www.fda.gov/animal-veterinary/recalls-withdrawals/withdrawal-enrofloxacin-poultry> (accessed July 27, 2021).
- Food and Drug Administration [FDA] (2020a). *The National Antimicrobial Resistance Monitoring System*. Available online at: <https://www.fda.gov/animal-veterinary/antimicrobial-resistance/national-antimicrobial-resistance-monitoring-system> (accessed July 27, 2021).
- Food and Drug Administration [FDA] (2020b). *2018 NARMS Update: Integrated Report Summary*. Available online at: <https://www.fda.gov/animal-veterinary/national-antimicrobial-resistance-monitoring-system/2018-narms-update-integrated-report-summary-interactive-version> (accessed July 27, 2021).
- Food and Drug Administration [FDA] (2021a). *Extralabel Use and Antimicrobials*. Available online at: <https://www.fda.gov/animal-veterinary/antimicrobial-resistance/extralabel-use-and-antimicrobials> (accessed July 27, 2021).
- Food and Drug Administration [FDA] (2021b). *2021 NARMS Interpretive Criteria for Susceptibility Testing*. Available online at: <https://www.fda.gov/media/108180/download> (accessed July 27, 2021).
- Food and Drug Administration [FDA] (2021c). *NARMS Now: Integrated Data*. Available online at: <https://www.fda.gov/animal-veterinary/national-antimicrobial-resistance-monitoring-system/narms-now-integrated-data> (accessed July 27, 2021).
- Francisco, A. P., Bugalho, M., Ramirez, M., and Carriço, J. A. (2009). Global optimal eBURST analysis of multilocus typing data using a graphic matroid approach. *BMC Bioinform.* 10:152. doi: 10.1186/1471-2105-10-152
- Francisco, A. P., Vaz, C., Monteiro, P. T., Melo-Cristino, J., Ramirez, M., and Carriço, J. A. (2012). PHYLOViZ: phylogenetic inference and data visualization for sequence based typing methods. *BMC Bioinform.* 13:87. doi: 10.1186/1471-2105-13-87
- Franco, A., Leekitcharoenphon, P., Feltrin, F., Alba, P., Cordaro, G., Iurescia, M., et al. (2015). Emergence of a clonal lineage of multidrug-resistant ESBL-Producing *Salmonella* infantis transmitted from broilers and broiler meat to humans in Italy between 2011 and 2014. *PLoS One* 10:e0144802. doi: 10.1371/journal.pone.0144802
- Frasson, I., Bettanello, S., De Canale, E., Richter, S. N., and Palù, G. (2016). Serotype epidemiology and multidrug resistance patterns of *Salmonella enterica* infecting humans in Italy. *Gut Pathog.* 8:26. doi: 10.1186/s13099-016-0110-8
- García-Soto, S., Abdel-Ghil, M. Y., Tomaso, H., Linde, J., and Methner, U. (2020). Emergence of multidrug-resistant *Salmonella enterica* Subspecies *Enterica* Serovar infantis of multilocus sequence Type 2283 in German broiler farms. *Front. Microbiol.* 11:1741. doi: 10.3389/fmicb.2020.01741
- Granados-Chinchilla, F., and Rodríguez, C. (2017). Tetracyclines in food and feedingstuffs: from regulation to analytical methods, bacterial resistance, and environmental and health implications. *J. Anal. Methods Chem.* 2017:1315497. doi: 10.1155/2017/1315497
- Hancock, S. J., Phan, M. D., Peters, K. M., Forde, B. M., Chong, T. M., Yin, W. F., et al. (2017). Identification of IncA/C plasmid replication and maintenance genes and development of a plasmid multilocus sequence typing scheme. *Antimicrob. Agents Chemother.* 61:e01740-16. doi: 10.1128/AAC.01740-16
- Hassan, R., Buuck, S., Noveroske, D., Medus, C., Sorenson, A., Laurent, J., et al. (2019). Multistate Outbreak of *Salmonella* infections linked to raw Turkey products - United States, 2017-2019. *MMWR Morb. Mortal Wkly Rep.* 68, 1045–1049. doi: 10.15585/mmwr.mm6846a1
- Heredia, N., and García, S. (2018). Animals as sources of food-borne pathogens: a review. *Anim. Nutr.* 4, 250–255. doi: 10.1016/j.aninu.2018.04.006

- Hindermann, D., Gopinath, G., Chase, H., Negrete, F., Althaus, D., Zurfluh, K., et al. (2017). *Salmonella enterica* serovar Infantis from food and human infections, Switzerland, 2010–2015: poultry-related multidrug resistant clones and an emerging ESBL producing Clonal lineage. *Front. Microbiol.* 8:1322. doi: 10.3389/fmicb.2017.01322
- Hoelzer, K., Soyer, Y., Rodriguez-Rivera, L. D., Cummings, K. J., McDonough, P. L., Schoonmaker-Bopp, D. J., et al. (2010). The prevalence of multidrug resistance is higher among bovine than human *Salmonella enterica* serotype Newport, Typhimurium, and 4,5,12:i:- isolates in the United States but differs by serotype and geographic region. *Appl. Environ. Microbiol.* 76, 5947–5959. doi: 10.1128/AEM.00377-10
- Hong, S., Rovira, A., Davies, P., Ahlstrom, C., Muellner, P., Rendahl, A., et al. (2016). Serotypes and antimicrobial resistance in *Salmonella enterica* recovered from clinical samples from Cattle and Swine in Minnesota, 2006 to 2015. *PLoS One* 11:e0168016. doi: 10.1371/journal.pone.0168016
- Hooper, D. C., and Jacoby, G. A. (2016). Topoisomerase inhibitors: fluoroquinolone mechanisms of action and resistance. *Cold Spring Harb. Perspect. Med.* 6:a025320. doi: 10.1101/cshperspect.a025320
- Hyeon, J. Y., Chon, J. W. I., Hwang, G., Kwak, H. S., Kim, M. S., Kim, S. K. I., et al. (2011). Prevalence, antibiotic resistance, and molecular characterization of *Salmonella* serovars in retail meat products. *J. Food Prot.* 74, 161–166. doi: 10.4315/0362-028X.JFP-10-327
- Jackson, M. A., Schutze, G. E., and COMMITTEE ON INFECTIOUS DISEASES (2016). The use of systemic and topical fluoroquinolones. *Pediatrics* 138:e20162706. doi: 10.1542/peds.2016-2706
- Jajere, S. M. (2019). A review of *Salmonella enterica* with particular focus on the pathogenicity and virulence factors, host specificity and antimicrobial resistance including multidrug resistance. *Vet. World* 12, 504–521. doi: 10.14202/vetworld.2019.504-521
- Johnson, T. J., Wannemuehler, Y. M., Johnson, S. J., Logue, C. M., White, D. G., Doetkott, C., et al. (2007). Plasmid replicon typing of commensal and pathogenic *Escherichia coli* isolates. *Appl. Environ. Microbiol.* 73, 1976–1983. doi: 10.1128/AEM.02171-06
- Jørgensen, F., Bailey, R., Williams, S., Henderson, P., Wareing, D. R., Bolton, F. J., et al. (2002). Prevalence and numbers of *Salmonella* and *Campylobacter* spp. on raw, whole chickens in relation to sampling methods. *Int. J. Food Microbiol.* 76, 151–164. doi: 10.1016/S0168-1605(02)00027-2
- Kaldhone, P. R., Carlton, A., Aljahdali, N., Khajanchi, B. K., Sanad, Y. M., Han, J., et al. (2019). Evaluation of incompatibility Group II (IncII) plasmid-containing. *Front. Vet. Sci.* 6:298. doi: 10.3389/fvets.2019.00298
- Karp, B. E., Tate, H., Plumblee, J. R., Dessai, U., Whichard, J. M., Thacker, E. L., et al. (2017). National antimicrobial resistance monitoring system: two decades of advancing public health through integrated surveillance of antimicrobial resistance. *Foodborne Pathog. Dis.* 14, 545–557. doi: 10.1089/fpd.2017.2283
- Kim, M.-S., Lim, T.-H., Jang, J.-H., Lee, D.-H., Kim, B.-Y., Kwon, J.-H., et al. (2012). Prevalence and antimicrobial resistance of *Salmonella* species isolated from chicken meats produced by different integrated broiler operations in Korea. *Poult. Sci.* 91, 2370–2375. doi: 10.3382/ps.2012-02357
- Kurtz, J. R., Goggins, J. A., and McLachlan, J. B. (2017). *Salmonella* infection: interplay between the bacteria and host immune system. *Immunol. Lett.* 190, 42–50. doi: 10.1016/j.imlet.2017.07.006
- Li, Y., Yang, Q., Cao, C., Cui, S., Wu, Y., Yang, H., et al. (2020). Prevalence and characteristics of *Salmonella* isolates recovered from retail raw chickens in Shaanxi Province China. *Poult. Sci.* 99, 6031–6044. doi: 10.1016/j.psj.2020.07.038
- Magiorakos, A. P., Srinivasan, A., Carey, R. B., Carmeli, Y., Falagas, M. E., Giske, C. G., et al. (2012). Multidrug-resistant, extensively drug-resistant and pandrug-resistant bacteria: an international expert proposal for interim standard definitions for acquired resistance. *Clin. Microbiol. Infect.* 18, 268–281. doi: 10.1111/j.1469-0691.2011.03570.x
- Mandilara, G., Sideroglou, T., Chrysostomou, A., Rentifis, I., Papadopoulos, T., Polemis, M., et al. (2021). The rising burden of Salmonellosis caused by monophasic *Salmonella* Typhimurium (1,4,[5],12:i:-) in Greece and new food vehicles. *Antibiotics* 10:185. doi: 10.3390/antibiotics10020185
- Mather, A. E., Reid, S. W., Maskell, D. J., Parkhill, J., Fookes, M. C., Harris, S. R., et al. (2013). Distinguishable epidemics of multidrug-resistant *Salmonella* Typhimurium DT104 in different hosts. *Science* 341, 1514–1517. doi: 10.1126/science.1240578
- McDermott, P. F., Tyson, G. H., Kabera, C., Chen, Y., Li, C., Folster, J. P., et al. (2016). Whole-genome sequencing for detecting antimicrobial resistance in nontyphoidal *Salmonella*. *Antimicrob. Agents Chemother.* 60, 5515–5520. doi: 10.1128/AAC.01030-16
- McMillan, E. A., Jackson, C. R., and Frye, J. G. (2020). Transferable plasmids of *Salmonella enterica* associated with antibiotic resistance genes. *Front. Microbiol.* 11:562181. doi: 10.3389/fmicb.2020.562181
- M'ikanatha, N. M., Yin, X., Boktor, S. W., Dettinger, L. A., and Tewari, D. (2021). Integrated surveillance for antimicrobial resistance in *Salmonella* From Clinical and retail meat sources reveals genetically related isolates harboring quinolone and ceftriaxone resistant determinants. *Open Forum Infect. Dis.* 8:ofab213. doi: 10.1093/ofid/ofab213
- Miller, E. A., Elnekave, E., Flores-Figueroa, C., Johnson, A., Kearney, A., Munoz-Aguayo, J., et al. (2020). Emergence of a novel *Salmonella enterica* serotype reading clonal group is linked to its expansion in commercial Turkey production, resulting in unanticipated human illness in North America. *mSphere* 5:e056-20. doi: 10.1128/mSphere.00056-20
- Nair, D., Venkitanarayanan, K., and Kollanoor Johny, A. (2018). Antibiotic-resistant *Salmonella* in the food supply and the potential role of antibiotic alternatives for control. *Foods* 7:167. doi: 10.3390/foods7100167
- Neuert, S., Nair, S., Day, M. R., Doumith, M., Ashton, P. M., Mellor, K. C., et al. (2018). Prediction of phenotypic antimicrobial resistance profiles from whole genome sequences of non-typhoidal *Salmonella enterica*. *Front. Microbiol.* 9:592. doi: 10.3389/fmicb.2018.00592
- NIHR Global Health Research Unit on Genomic Surveillance of AMR (2020). Whole-genome sequencing as part of national and international surveillance programmes for antimicrobial resistance: a roadmap. *BMJ Glob. Health* 5:e002244. doi: 10.1136/bmjgh-2019-002244
- Nyirabahizi, E., Tyson, G. H., Tate, H., Kabera, C., Crarey, E., Ayers, S., et al. (2020). Northeastern U.S. *Salmonella* strains from retail meat are more prevalent and more resistant to antimicrobials. *J. Food Prot.* 83, 849–857. doi: 10.4315/JFP-19-549
- Pornsukarom, S., van Vliet, A. H. M., and Thakur, S. (2018). Whole genome sequencing analysis of multiple *Salmonella* serovars provides insights into phylogenetic relatedness, antimicrobial resistance, and virulence markers across humans, food animals and agriculture environmental sources. *BMC Genom.* 19:801. doi: 10.1186/s12864-018-5137-4
- Ravel, A., Smolina, E., Sargeant, J. M., Cook, A., Marshall, B., Fleury, M. D., et al. (2010). Seasonality in human salmonellosis: assessment of human activities and chicken contamination as driving factors. *Foodborne Pathog. Dis.* 7, 785–794. doi: 10.1089/fpd.2009.0460
- Redgrave, L. S., Sutton, S. B., Webber, M. A., and Piddock, L. J. (2014). Fluoroquinolone resistance: mechanisms, impact on bacteria, and role in evolutionary success. *Trends Microbiol.* 22, 438–445. doi: 10.1016/j.tim.2014.04.007
- Singer, R. S., Porter, L. J., Schrag, N. F. D., Davies, P. R., Apley, M. D., and Bjork, K. (2020). Estimates of on-farm antimicrobial usage in turkey production in the United States, 2013–2017. *Zoonoses Public Health* 67(Suppl. 1), 36–50. doi: 10.1111/zph.12763
- Sivaramalingam, T., McEwen, S. A., Pearl, D. L., Ojkic, D., and Guerin, M. T. (2013). A temporal study of *Salmonella* serovars from environmental samples from poultry breeder flocks in Ontario between 1998 and 2008. *Can. J. Vet. Res.* 77, 1–11.
- Su, M., Satola, S. W., and Read, T. D. (2019). Genome-based prediction of bacterial antibiotic resistance. *J. Clin. Microbiol.* 57:e01405-18. doi: 10.1128/JCM.01405-18
- Tate, H., Folster, J. P., Hsu, C. H., Chen, J., Hoffmann, M., Li, C., et al. (2017). Comparative analysis of extended-spectrum-β-Lactamase CTX-M-65-producing *Salmonella enterica* Serovar Infantis isolates from humans, food animals, and retail chickens in the United States. *Antimicrob. Agents Chemother.* 61:e0488-17. doi: 10.1128/AAC.00488-17
- Tyson, G. H., Li, C., Harrison, L. B., Martin, G., Hsu, C. H., Tate, H., et al. (2021). A multidrug-resistant *Salmonella* infantis clone is spreading and recombining in the United States. *Microb. Drug Resist.* 27, 792–799. doi: 10.1089/mdr.2020.0389
- Tyson, G. H., McDermott, P. F., Li, C., Chen, Y., Tadesse, D. A., Mukherjee, S., et al. (2015). WGS accurately predicts antimicrobial resistance in *Escherichia coli*. *J. Antimicrob. Chemother.* 70, 2763–2769. doi: 10.1093/jac/dkv186

- Tyson, G. H., Sabo, J. L., Rice-Trujillo, C., Hernandez, J., and McDermott, P. F. (2018). Whole-genome sequencing based characterization of antimicrobial resistance in *Enterococcus*. *Pathog. Dis.* 76:fty018. doi: 10.1093/femspd/fty018
- Wang, X., Biswas, S., Paudyal, N., Pan, H., Li, X., Fang, W., et al. (2019). Antibiotic resistance in *Salmonella* Typhimurium isolates recovered from the food chain through national antimicrobial resistance monitoring system between 1996 and 2016. *Front. Microbiol.* 10:985. doi: 10.3389/fmicb.2019.00985
- Wang, Y., Chen, Q., Cui, S., Xu, X., Zhu, J., Luo, H., et al. (2014). Enumeration and characterization of *Salmonella* isolates from retail chicken carcasses in Beijing, China. *Foodborne Pathog. Dis.* 11, 126–132. doi: 10.1089/fpd.2013.1586
- Xu, Z., Wang, M., Zhou, C., Gu, G., Liang, J., Hou, X., et al. (2020). Prevalence and antimicrobial resistance of retail-meat-borne *Salmonella* in southern China during the years 2009–2016: the diversity of contamination and the resistance evolution of multidrug-resistant isolates. *Int. J. Food Microbiol.* 333:108790. doi: 10.1016/j.ijfoodmicro.2020.108790
- Yang, X., Wu, Q., Zhang, J., Huang, J., Guo, W., and Cai, S. (2015). Prevalence and characterization of Monophasic *Salmonella* Serovar 1,4,[5],12:i:- of food Origin in China. *PLoS One* 10:e0137967. doi: 10.1371/journal.pone.0137967
- Yin, X., M'ikanatha, N. M., Nyirabahizi, E., McDermott, P. F., and Tate, H. (2021). Antimicrobial resistance in non-Typhoidal *Salmonella* from retail poultry meat by antibiotic usage-related production claims - United States, 2008–2017. *Int. J. Food Microbiol.* 342:109044. doi: 10.1016/j.ijfoodmicro.2021.109044
- Yu, C. Y., Chou, S. J., Yeh, C. M., Chao, M. R., Huang, K. C., Chang, Y. F., et al. (2008). Prevalence and characterization of multidrug-resistant (type ACSSuT) *Salmonella enterica* serovar Typhimurium strains in isolates from four gosling farms and a hatchery farm. *J. Clin. Microbiol.* 46, 522–526. doi: 10.1128/JCM.00709-07
- Zdragas, A., Mazaraki, K., Vafeas, G., Giantzi, V., Papadopoulos, T., and Ekateriniadou, L. (2012). Prevalence, seasonal occurrence and antimicrobial resistance of *Salmonella* in poultry retail products in Greece. *Lett. Appl. Microbiol.* 55, 308–313. doi: 10.1111/j.1472-765X.2012.03298.x
- Zhang, S., den Bakker, H. C., Li, S., Chen, J., Dinsmore, B. A., Lane, C., et al. (2019). SeqSero2: rapid and improved *Salmonella* serotype determination using whole-genome sequencing data. *Appl. Environ. Microbiol.* 85:e10746-19. doi: 10.1128/AEM.01746-19
- Zhao, C., Ge, B., De Villena, J., Sudler, R., Yeh, E., Zhao, S., et al. (2001). Prevalence of *Campylobacter* spp., *Escherichia coli*, and *Salmonella* serovars in retail chicken, turkey, pork, and beef from the Greater Washington, D.C., area. *Appl. Environ. Microbiol.* 67, 5431–5436. doi: 10.1128/AEM.67.12.5431-5436.2001
- Zhao, S., Li, C., Hsu, C. H., Tyson, G. H., Strain, E., Tate, H., et al. (2020). Comparative genomic analysis of 450 strains of *Salmonella enterica* isolated from diseased animals. *Genes* 11:1025. doi: 10.3390/genes11091025
- Author Disclaimer:** The views expressed in this article are those of the authors and do not necessarily reflect the official policies of the Department of Health and Human Services; nor does any mention of trade names, commercial practices, or organization imply endorsement by the United States Government.
- Conflict of Interest:** The authors declare that the research was conducted in the absence of any commercial or financial relationships that could be construed as a potential conflict of interest.
- Publisher's Note:** All claims expressed in this article are solely those of the authors and do not necessarily represent those of their affiliated organizations, or those of the publisher, the editors and the reviewers. Any product that may be evaluated in this article, or claim that may be made by its manufacturer, is not guaranteed or endorsed by the publisher.

Copyright © 2022 Lee, Atwill, Pitesky, Huang, Lavelle, Rickard, Shafii, Hung-Fan and Li. This is an open-access article distributed under the terms of the Creative Commons Attribution License (CC BY). The use, distribution or reproduction in other forums is permitted, provided the original author(s) and the copyright owner(s) are credited and that the original publication in this journal is cited, in accordance with accepted academic practice. No use, distribution or reproduction is permitted which does not comply with these terms.