

UC Davis

UC Davis Previously Published Works

Title

Corneal Refractive Procedures for the Treatment of Presbyopia

Permalink

<https://escholarship.org/uc/item/28t517mf>

Journal

The Open Ophthalmology Journal, 11(1)

ISSN

1874-3641

Authors

Moussa, Kareem

Jehangir, Naz

Mannis, Tova

et al.

Publication Date

2017-04-27

DOI

10.2174/1874364101711010059

Copyright Information

This work is made available under the terms of a Creative Commons Attribution License, available at <https://creativecommons.org/licenses/by/4.0/>

Peer reviewed



The Open Ophthalmology Journal

Content list available at: www.benthamopen.com/TOOPHTJ/

DOI: 10.2174/1874364101711010059



REVIEW ARTICLE

Corneal Refractive Procedures for the Treatment of Presbyopia

Kareem Moussa¹, Naz Jehangir², Tova Mannis³, Wai L. Wong¹ and Majid Moshirfar^{4,*}

¹Department of Ophthalmology, Francis I. Proctor Foundation, University of California San Francisco, San Francisco, CA 94143, USA

²Research Associate, Francis I. Proctor Foundation, University of California San Francisco, San Francisco, CA 94143, USA

³Clinical fellow, Francis I. Proctor Foundation, University of California San Francisco, San Francisco, CA 94143, USA

⁴Medical Director HDR Research Center, Hoopes Vision and Professor of Ophthalmology, Department of Ophthalmology and Visual Sciences, John A Moran Eye Center, University of Utah School of Medicine, Salt Lake City, UT, USA

Received: November 25, 2016

Revised: January 27, 2017

Accepted: February 06, 2017

Abstract:

Purpose:

Refractive surgery has been in use for a long time and is evolving at a fast pace with several new corneal procedures being used for the correction of presbyopia. The purpose of this article is to give a comprehensive review of the literature to evaluate the outcome and success of different corneal refractive surgical procedures in presbyopic patients.

Methods:

We performed a comprehensive search on PubMed to identify published reports of the various procedures utilized in the past and present to correct presbyopia. The outcomes of these procedures were recorded.

Results and conclusion:

We found that varying rates of success have been reported with these procedures. The results of our exhaustive search are presented in this report for review.

Keywords: Presbyopia, LASIK, PresbyLASIK, Corneal Inlays, Conductive Keratoplasty, INTRACOR.

INTRODUCTION

Presbyopia is the inevitable loss of lens accommodative power that is usually first noticed between the ages of 40 and 50. There are two main mechanisms that have been proposed to explain the physiologic changes that lead to presbyopia. According to the Helmholtz theory, ciliary muscle contraction results in decreased zonular tension, permitting the lens to take a more globular shape and increase its power [1]. As the lens ages, it loses its elastic properties and is unable to take on globular shape in response to ciliary muscle contraction, leading to loss of accommodation. The Schachar theory suggests that contraction of the longitudinal ciliary muscle results in reduced tension and subsequent relaxation of the anterior and posterior zonules, and increased tension on the equatorial zonules, which increases the power of the lens due to a decrease in the peripheral volume of the lens and an increase in the

* Address correspondence to this author at the Department of Ophthalmology, Francis I. Proctor Foundation, University of California San Francisco, 10 Koret Way, K101, San Francisco, CA 94143, USA; Tel: (415) 502-3321; Fax: (415) 476-0336; E-mails: Majid.moshirfar@ucsf.edu, cornea2020@icloud.com

central volume of the lens [2]. As the lens ages, the equatorial diameter increases and the peripheral volume increases, leading to an eventual loss of accommodative power. The age at which presbyopia becomes clinically significant is dependent on a host of factors, including accommodative ability, distance refraction, age, sex, ethnicity, and geographic location [3 - 10].

In 2005, it was estimated that 1.04 billion people suffer from presbyopia, 67% of whom live in the developing world [11]. Among individuals with presbyopia, 517 million do not have adequate correction. Studies report significant functional impairment as a direct result of presbyopia, particularly in the developing world; using their habitual spectacles, 70% of rural Tanzanians, 58% of Brazilians, and 53% of Indians report difficulty with near tasks. In the United States, a multicenter study reported an association between presbyopia and substantial negative effects on quality of life [12]. Worldwide, it is estimated that the presbyopic population will increase to 1.4 billion by 2020 and 1.8 billion by 2050, with uncorrected presbyopia afflicting 563 million people by 2020.

Spectacles are widely used to correct presbyopia. The high levels of patient satisfaction achieved with various refractive procedures to correct refractive errors have led to an interest in and the development of a number of surgical techniques to correct presbyopia and minimize or eliminate the need for spectacle wear. In this review, we specifically discuss corneal surgical techniques for the treatment of presbyopia.

MATERIALS AND METHODS

Using PubMed, an extensive literature search was performed to identify studies published from 1964 to May 2015 that evaluated outcomes of the various procedures described in this paper. We searched for articles in English and French. Keywords included presbyopia, accommodation, refractive surgery, LASIK, PRK, corneal inlays, Kamra inlay, Flexivue inlay, Raindrop inlay, conductive keratoplasty and IntraCor. The safety, efficacy and predictability of these refractive procedures are summarized in tables and graphs.

LASIK and PRK Monovision

Monovision is an attempt to provide acceptable distance and near vision that eliminates the need for spectacle wear by optimizing one eye for near vision, typically the non-dominant eye, and optimizing the other eye, typically the dominant eye, for distance vision. This is known as conventional monovision. Alternatively, optimizing the non-dominant eye for monovision is termed crossed monovision. Contact lens wear has been used to achieve monovision with a success rate of 76% [13].

Refractive surgery to induce permanent monovision has been extensively studied. In 2001, Jain *et al.* analyzed outcomes of 42 patients who had undergone photorefractive keratectomy (PRK), photoablative astigmatic refractive keratectomy (PARK), or laser in situ keratomileusis and PARK (LASIK-PARK) in one or both eyes with the goal of achieving conventional monovision, in which the non-dominant eye is corrected for near vision, or crossed monovision, in which the dominant eye is corrected for near vision [14]. They reported a satisfaction rate of 88%, suggesting that patient satisfaction after refractive surgery monovision is higher than that after contact lens monovision. Other studies have reported similar satisfaction rates, ranging from 85-98% (Table 1). While this is an encouraging outcome in the quest to eliminate spectacle or contact lens dependence, other studies suggested worse outcomes following LASIK with increasing age [15 - 21]. In 2007, Ghanem *et al.* evaluated LASIK outcomes in 511 myopic eyes and 199 hyperopic eyes subdivided into three groups of varying age (40-49 years old, 50-59 years old, and 60-69 years old) [22]. They found that while older patients had a trend toward worse final best spectacle-corrected visual acuity (BSCVA) and higher retreatment rates, these differences were not statistically significant, suggesting LASIK is a reasonably safe and efficacious procedure in the presbyopic age group.

Table 1. LASIK and PRK Monovision Outcomes in Presbyopic Patients. NR = Not Reported.

Refractive error	Author	Procedure	Number of patients	Follow-up in months	Postoperative Uncorrected Near Visual Acuity (UNVA)	Postoperative Uncorrected Distance Visual Acuity (UDVA)	1 Line Loss of Best-Corrected Visual Acuity (% of eyes)	2 Lines loss of Best-Corrected Visual Acuity (% of eyes)	Post-operative Spectacle Independence (% of pts)	Post-operative satisfaction (% of pts)	Re-treatment (Number/percentage of patients/eyes)
Myopia, Astigmatism, Emmetropia, Hyperopia	Falcon <i>et al.</i> [53]	LASIK.	173	1-28	98.84% ≤ J3	91.9% ≤ 20/20	NR	0.0058%	97.11%	93.64%	24 patients (13.87%)
Myopia, Astigmatism, Emmetropia, Hyperopia	Alarcon <i>et al.</i> [56]	LASIK.	25	3	More than 90% ≤ J1+	More than 90% ≤ 20/20	NR	NR	NR	92%	NR

(Table 1) contd....

Refractive error	Author	Procedure	Number of patients	Follow-up in months	Postoperative Uncorrected Near Visual Acuity (UNVA)	Postoperative Uncorrected Distance Visual Acuity (UDVA)	1 Line Loss of Best-Corrected Visual Acuity (% of eyes)	2 Lines loss of Best-Corrected Visual Acuity (% of eyes)	Post-operative Spectacle Independence (% of pts)	Post-operative satisfaction (% of pts)	Re-treatment (Number/percentage of patients/eyes)
Myopia	Levinger <i>et al.</i> [54]	LASIK	40	12	94.7% ≤ J1	92.1% ≤ 20/32	0%	0%	90.87%	85.22%	4 patients (10%) for distance correction.
Myopia	Reilly <i>et al.</i> [62]	LASIK	82	6	98.9% ≤ J2	100% ≤ 20/25	NR	NR	NR	97.6%	6 enhancements in near eyes (7%), 17 enhancements in distance eyes (21%)
Myopia, Astigmatism	Garcia-Gonzalez <i>et al.</i> [57]	LASIK	37	6	91.89% ≤ J3	97.30% ≤ 20/25	NR	NR	NR	NR	0%
Myopia	Reinstein <i>et al.</i> [58]	LASIK	136	12.5	96% = J2	99% = 20/20	7%	0.00%	NR	NR	52/272 eyes (19%) 27 eyes for distance. 25 eyes for near.
Myopia	Jain <i>et al.</i> [14]	PRK-,PARK or LASIK-PARK	42	7	Mean near vision spherical equivalent of -1.95 diopters.	Mean distance vision spherical equivalent of -0.04 diopters.	NR	NR	NR	88%	NR
Hyperopic astigmatism	Reinstein <i>et al.</i> [59]	LASIK	129	12.5	81% = J2	95% = 20/20	17%	0.00%	NR	NR	22% eyes of which 50% for near and 50% for distance.
Myopia and Hyperopia	Braun <i>et al.</i> [60]	LASIK	172	At least 1 month	93% ≤ J3	87.4% ≤ 20/40	NR	NR	NR	93%	61 patients (77 eyes, 35.5%) had enhancement. 48pts (27.9%) for distance. 17pts (9.9%) for near vision. 12 patients (7%) chose to forego monovision .
Myopia and Hyperopia	Levinger <i>et al.</i> [61]	LASIK	114	3	97% ≤ J2	79% ≤ 20/25	NR	NR	92% for distance, 76% for reading .	80%	NR
Myopia and Hyperopia	Miranda <i>et al.</i> [63]	LASIK	374	NR	NR	NR	NR	NR	NR	92.5%	NR
Myopia and Hyperopia	Goldberg <i>et al.</i> [64]	LASIK	114	6-28	87.7% ≤ J1	99% ≤ 20/20	NR	NR	70.7% for distance, 68.0% for reading	90.1% at level of 8 or higher (10 = most satisfied)	30/228 eyes (13.2%)
Emmetropia	Reinstein <i>et al.</i> [55]	LASIK.	148	12.9	99% ≤ J3	100% ≤ 20/32	12.8%	0%	NR	NR	35/296 eyes (11.8%). 14 eyes for distance. 21 eyes for near.

While monovision has proven to be a successful method of treating presbyopia, it does carry the risk of inducing anisometropia and reducing binocular visual acuity and stereopsis, which should be discussed pre-operatively [13].

PresbyLASIK

Accommodation is a dynamic, active process that is dependent on the elastic properties of the lens. The cornea, in comparison, is a static tissue that does not alter its shape to influence refractive power. Relative to the elastic lens, it has a low depth of field. Naturally, alterations in the cornea to enhance its depth of field may serve as a potential solution for presbyopia. This has led to recent interest in the development of a multifocal cornea via laser ablation for this purpose. LASIK has garnered more attention as the procedure of choice for corneal multifocality, as it avoids the potential problem of suboptimal epithelium growth over the ablated areas [23]. The various techniques to create a multifocal cornea have been named presbyLASIK techniques, of which there are three: transitional multifocality, peripheral presbyLASIK, and central presbyLASIK. The creation of a transitional multifocal cornea has been associated with significant vertical coma and has limited the popularity of this technique [23].

In peripheral presbyLASIK, peripheral cornea is ablated for near (Fig. (1), b= near vision) and the center is left for distance (Fig. (1), a= distance vision). In myopes undergoing peripheral presbyLasik, a significant amount of corneal tissue must be removed to create a hyper-negative ablation profile. Thus, peripheral presbyLASIK is typically performed in presbyopic hyperopes or presbyopic low myopes. In 2009, Uy *et al.* evaluated outcomes of presbyLASIK in 195 eyes with myopic presbyopia and 119 eyes with emmetropic or hyperopic presbyopia. 83% of the myopic presbyopes achieved both 20/30 or better uncorrected distance visual acuity (UDVA) and J3 or better uncorrected near visual acuity (UNVA) at three-month follow-up [24]. 87% of the emmetropic or hyperopic presbyopes achieved the same outcome. In a study evaluating monocular presbyLASIK in the non-dominant eye and monofocal refraction-based LASIK in the dominant eye in 75 presbyopic myopes and 28 presbyopic hyperopes, Epstein *et al.* reported complete spectacle independence in 92% of the myopes and 89% of the hyperopes at mean follow-up of 27.4 months [25]. These

findings lend support to the use of peripheral presbyLASIK for presbyopic correction, particularly in hyperopes and low myopes.

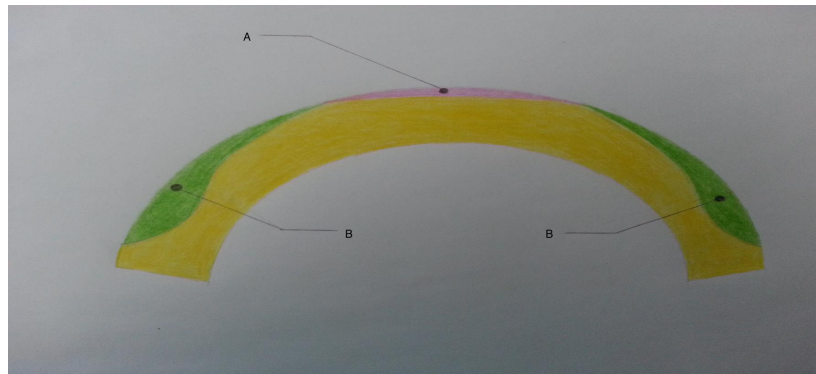


Fig. (1). Central/Peripheral PresbyLASIK.

In central presbyLASIK, the center of the cornea is corrected for near (Fig. (1), a= near vision) while the peripheral cornea (Fig. (1), b= distance vision) is left for distance. This technique is associated with only minimal corneal excision, thus it is suitable for both myopes and hyperopes. A study by Alio *et al.* in 2006 evaluated central presbyLasik in a hyperopic population and found that 64% of patients achieved UDVA of 20/20 or better, and 72% achieved UNVA of 20/40 or better at 6-month follow-up; however, 20% lost two lines of BSCVA, contrast sensitivity was reduced, the coefficients for coma increased, and the coefficients for spherical aberrations decreased [26]. In 2008, Jung *et al.* reported UDVA of 0.8 (20/25) or better and UNVA of 0.65 (J2 approx.) or better in 64.3% (9/14 patients) of hyperopic presbyopes who received central presbyLASIK treatment; no significant changes were found in contrast sensitivity or total higher order aberrations [27]. Another study of 26 eyes reported an improvement in mean UNVA from 0.15 (J11 approx.) to 0.68 (J2 approx.) following central PresbyLASIK; mean UDVA improved from 0.35 (20/60 approx.) to 0.8 (20/25) [28].

These studies validate central presbyLASIK as a technique to improve functional near vision, however the possibility of reduced quality of vision does exist. Satisfaction rates of presbyLASIK have ranged from 76% - 100% (Table 2).

Table 2. PresbyLASIK Outcomes in Presbyopic Patients. NR = Not Reported, CDVA= Corrected distance visual acuity. CNVA= corrected near visual acuity.

Refractive error	Author	Procedure	Number of patients	Follow-up in months	Postoperative Uncorrected Near Visual Acuity (UNVA)	Postoperative Uncorrected Distance Visual Acuity (UDVA)	1 Line Loss of Best-Corrected Visual Acuity (% of eyes)	2 Lines loss of Best-Corrected Visual Acuity (% of eyes)	Post-operative Spectacle Independence (% of patients)	Post-operative satisfaction (% of patients)	Re-treatment (Number /percentage of patients/eyes)
Hyperopia	Abrieu-Lacaille <i>et al.</i> [65]	Bilateral central presbyLASIK	29	6	Mean .18 logMAR (approx. J2)	Mean 0.02 logMAR (between 20/20 and 20/16)	NR	NR	86%	79%	NR
Hyperopia	Pinelli <i>et al.</i> [67]	Bilateral peripheral presbyLASIK	22	6	Mean 0.84 (between 20/25 and 20/20)	Mean 1.0 (20/20)	4.5% CDVA 4.5% CNVA	NR	NR	100%	6 eyes (12%) for distance vision.
Hyperopia	Alio <i>et al.</i> [26]	Bilateral central presbyLASIK	25	6	72% ≤ J3	64% ≤ 20/20	10% CDVA	20% CDVA 52% CNVA	72%	76%	6 eyes (12%) for distance vision.
Myopia, Hyperopia	Luger <i>et al.</i> [66]	Bilateral central presbyLASIK	31	12	84% ≤ J1	70% ≤ 20/25	33% lost one line of CDVA. 23% lost one line of CNVA.	3% lost 2 lines of CDVA. 8% lost 2 lines of CNVA.	72%	76%	NR
Myopia, Hyperopia	Epstein <i>et al.</i> [25]	Unilateral peripheral presbyLASIK on the non-dominant eye	103	27.4	71.4% ≤ J1+ (hyperopes) 65.3% ≤ J1+ (myopes)	67.9% ≤ 20/20 (hyperopes) 70.7% ≤ 20/20 (myopes)	14.3% hyperopic eyes 10.7% myopic eyes.	NR	91.3%	NR	20/75 myopic eyes (26.6%). 8/28 hyperopic eyes. (28.6%)

(Table 2) contd....

Refractive error	Author	Procedure	Number of patients	Follow-up in months	Postoperative Uncorrected Near Visual Acuity (UNVA)	Postoperative Uncorrected Distance Visual Acuity (UDVA)	1 Line Loss of Best-Corrected Visual Acuity (% of eyes)	2 Lines loss of Best-Corrected Visual Acuity (% of eyes)	Post-operative Spectacle Independence (% of patients)	Post-operative satisfaction (% of patients)	Re-treatment (Number /percentage of patients/eyes)
	Patel <i>et al.</i> [28]	Comparison of 2 IOLs and central presbyLASIK	13	6	Mean UNVA 0.68 (between 20/32 and 20/25)	Mean UDVA 0.80 (20/25)	NR	NR	NR	NR	NR
Hyperopia	Jung <i>et al.</i> [27]	Bilateral central presbyLASIK	27	6	64.3% ≤ 0.65 (between 20/32 and 20/25)	64.3% ≤ 20/25	NR	4% CDVA	NR	NR	NR
Myopia, Emmetropia and Hyperopia	Uy <i>et al.</i> [24]	Bilateral peripheral presbyLASIK	158	3	83% ≤ J3 (myopes) 87% ≤ J3 (hyperopes or emmetropes)	83% ≤ 20/30 (myopes) 87% ≤ 20/30 (hyperopes or emmetropes)	NR	NR	NR	NR	4 myopic eyes (2.1%). 1 emmetropic eye. (0.8%) 1 hypermetropic eye (0.8%)

Corneal Inlays

In 1964, Barraquer introduced keratophakia, a procedure in which a lamellar incision is made through the corneal stroma, and a lenticule is placed to augment the cornea’s refractive power, as a treatment for hyperopia and presbyopia [29]. While this procedure resulted in unpredictable results and has been largely abandoned, it led to the development of other intra-corneal inlays, some of which have also been met with unfortunate outcomes, including corneal necrosis and opacification [30 - 33]. In this article, we will be discussing the following four inlay designs.

1. Kamra Inlay

The Kamra inlay is a corneal inlay manufactured by AcuFocus Inc., in Irvine, California, for the treatment of presbyopia (Fig. 2). It is likely the most well-studied corneal inlay and as of April 2015, has earned approval from the U.S. Food and Drug Administration (FDA) for the surgical treatment of presbyopia in the U.S patients 45-60 years old who do not require distance correction, have not undergone cataract surgery, and require a near correction of +1.00 to +2.50 diopters. The Kamra corneal inlay, model ACI7000 in the studies mentioned below, is 10 μm thick, composed of polyvinylidene fluoride, with an outer diameter of 3.8 mm and a central aperture of 1.6 mm. The inlay has 1600 micro-perforations, each 25 μm in diameter, allowing nutrient flow through the cornea. The central aperture allows for an increased depth of focus to improve near and intermediate visual acuity, with minimal effects on distance visual acuity. The model of the Kamra inlay that is currently available is ACI7000PDT. It is thinner than the previous model, with a thickness of 5 μm, and has 8400 smaller micro-perforations ranging in size from 5 to 11 μm, which allow an average light transmission of 6.7%, a decrease from 7.1%; these changes are thought to reduce some of the visual symptoms experienced with the inlay, such as glare.

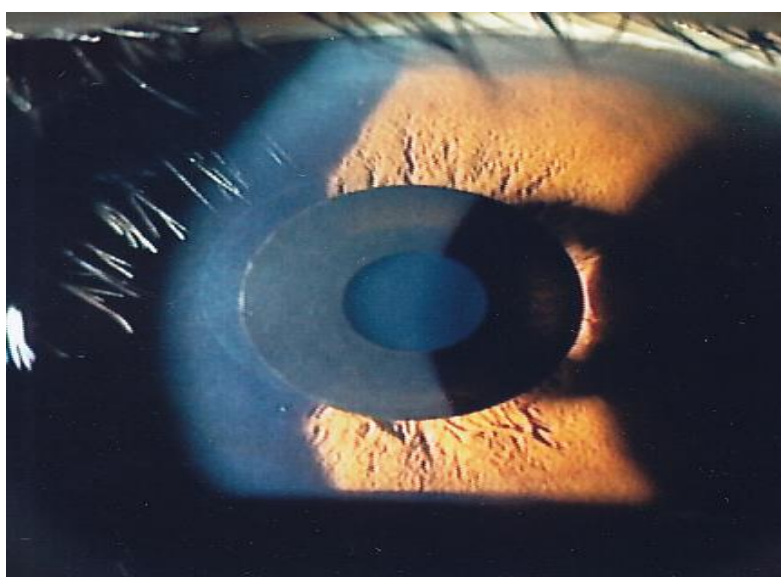


Fig. (2). Kamra inlay. Permission for use of this image was obtained from AcuFocus, Inc. Photocredits Dr Minoru Tomita.

A study evaluating the long-term outcomes of monocular Kamra implantation in emmetropic presbyopes reported an improvement in mean binocular UNVA from J6 to J2 and an improvement in mean uncorrected intermediate visual acuity (UIVA) from 20/32 to 20/25 at 60 months of follow-up [34]. Mean UDVA decreased slightly from 20/12.5 to 20/16. 74.2% of patients had UNVA of J3 or better, 87.1% had UIVA or 20/32 or better, and 93.5% had UDVA of 20/20 or better. Out of 32 inlays, one was removed due to patient dissatisfaction from a hyperopic shift in the operative eye; there was no loss of CDVA or CNVA 2 years after the removal. In a similar study that evaluated the long-term visual results of the Acufocus ACI7000 (now Kamra) intra-corneal inlay in 39 presbyopic emmetropic (naturally or post-LASIK) phakic patients, all 22 patients who presented for the 4-year follow-up visit gained at least 2 lines in UNVA with no significant loss in distance vision, with a final mean UNVA of J1 in the operative eye [35]. The mean gain in UNVA was 3.8 lines. The UDVA was 20/40 or better in all eyes at the 4-year follow-up visit, with a slight, statistically insignificant decrease from a mean UDVA of 20/20 pre-operatively to a mean UDVA of 20/25 postoperatively. Four inlays underwent explantation: one at six weeks due to a buttonhole flap, two due to refractive shifts (one myopic, -2.00D, and one hyperopic, +3.00D) with significant glare and halos, and one due to a thin flap of 58 μ M that was not noticed during surgery. All four eyes that underwent explantation returned to within ± 1.00 D of the preoperative refraction.

Other studies have reported encouraging results of Kamra implantation following Lasik surgery as well as in combination with Lasik surgery, with highest patient satisfaction reported in older patients; occasional postoperative symptoms include dry eyes, halo, and glare [36 - 38].

2. Raindrop Inlay

The Raindrop near vision inlay is a corneal inlay manufactured by Revision Optics in Lake Forest, California, that aims to alter the shape of the cornea to modify its refractive power. It has a 2.0 mm diameter with a central thickness of 32 to 36 μ M (Fig. 3). It is made of permeable hydrogel material that has the same refractive index as the cornea, but is thicker in the center and thinner at the edges. It is placed in the stromal bed underneath a keratotomy flap. A study of 20 emmetropic presbyopes who underwent monocular implantation of the Raindrop inlay in the non-dominant eye reported at least 20/40 UNVA in all eyes that underwent treatment at one-year follow-up [39]. There was minimal effect on UDVA, however one patient was dissatisfied with the resulting vision and underwent explantation of the inlay. Simultaneous monocular hydrogel inlay implantation in the non-dominant eye and bilateral Lasik treatment in hyperopic presbyopes also yielded positive results, with all eyes with the inlay achieving UNVA of 20/32 or better at one-year follow-up [40]. Mean binocular UDVA improved from 20/53 preoperatively to 20/19 postoperatively. Out of 16 inlays, one was explanted due to recurrent haze. Of the 14 patients analyzed at one-year follow-up, all reported being satisfied or very satisfied with near, distance, and overall vision.

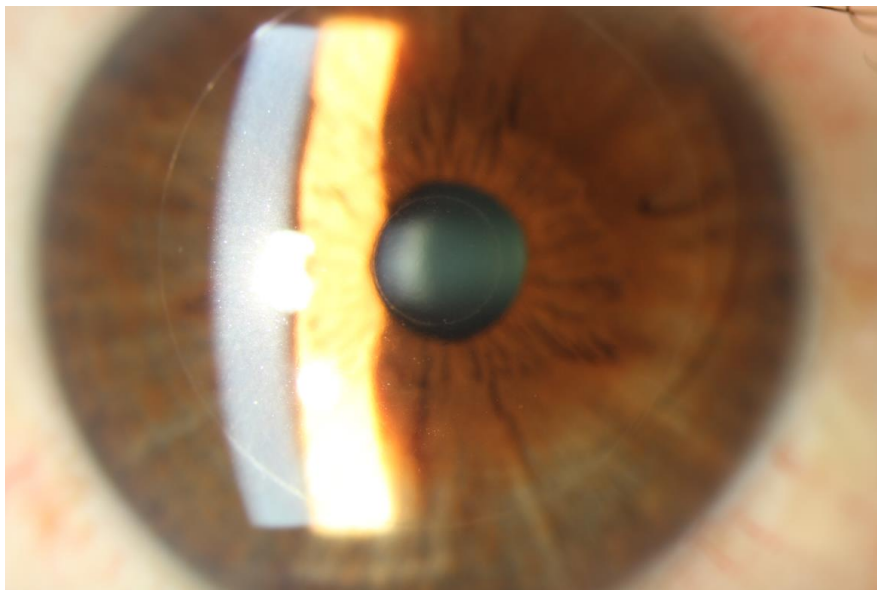


Fig. (3). Raindrop inlay, courtesy of Pf. Choun-Ki Joo, MD, PhD.JPG.

3. Flexivue Inlay

The Flexivue Microlens is a 3.0 mm diameter corneal inlay with a thickness of 15 μM , manufactured by Presbia Cooperatief in Amsterdam, Netherlands (Figs. 4 and 5). In a study of 47 emmetropic presbyopes who received the inlay in the non-dominant eye underneath a femtosecond laser flap, UNVA was 20/32 or better in 75% of operative eyes and UDVA decreased significantly from a mean of 20/20 to 20/50 at one-year follow-up [41]. 36% (17/47) of patients lost one line of CDVA in the operated eye, and there was an increase in higher order aberrations as well as a decrease in contrast sensitivity in the operated eye.

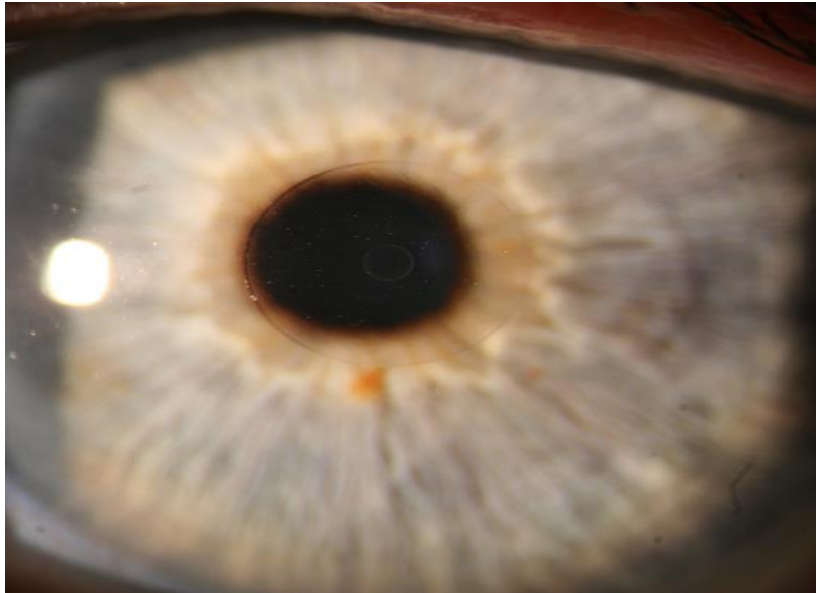


Fig. (4). Flexivue Lens. Permission for use of this image was obtained from Presbia Cooperatief, with courtesy Dr Crewe Brown.

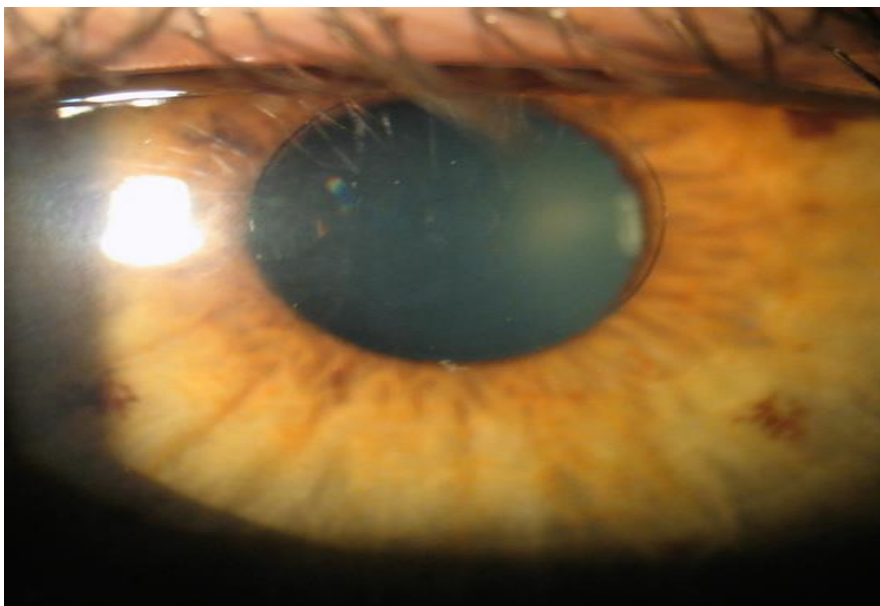


Fig. (5). Flexivue Lens. Permission for use of this image was obtained from Presbia Cooperatief, with courtesy Dr Prof Ioannis Pallikaris, Greece.

4. Icolens Inlay

The Icolens (Neoptics AG) is a 3.0mm corneal inlay with a 1.8mm central zone for distance and a 1.2mm peripheral positive refractive zone for near. There is a 150 μM central hole for nutrient flow. The inlay is composed of 2-hydroxyethyl methacrylate and methyl methacrylate, which have hydrogel properties. The power of the refractive zone

is dependent on the patient's near and distance visual acuities, refraction, pupil size and central corneal thickness. Results of a recent study evaluating its efficacy and safety are summarized in Table 3 along with the results of other studies of corneal inlays.

Table 3. Corneal Inlays Outcomes in Presbyopic Patients. NR = Not Reported.

Refractive error	Author	Type of Inlay	Number of patients	Follow-up in months	Postoperative Uncorrected Near Visual Acuity (UNVA)	Postoperative Uncorrected Distance Visual Acuity (UDVA)	1 Line Loss of Best-Corrected Visual Acuity (% of eyes)	2 Lines loss of Best-Corrected Visual Acuity (% of eyes)	Post-operative Spectacle Independence (% of patients)	Post-operative satisfaction (% of patients)	Re-treatment (Number/percentage of eyes/pts.)
Emmetropia	Limnopoulos et al. [41]	Flexivue	47	12	100% ≤ J3	Mean 20/50.	36%	0	93.75%	81.25%	NR
Emmetropia	Garza et al. [39]	Raindrop	20	12	100% ≤ 20/32 (approx. J2)	85% ≥ 20/40	NR	0%	84%	95%	1 patient explantation.
Hyperopia	Chayet et al. [40]	Raindrop inlay + hyperopic LASIK	16	12	100% ≤ 20/32 (approx. J2)	100% ≤ 20/19	NR	0%	NR	100%	1 patient explantation.
Myopia	Garza et al. [68]	Raindrop inlay + myopic LASIK.	30	12	100% ≤ 20/32 (approx. J2)	93% ≤ 20/40	NR	0%	98%	90%	0%
Emmetropia	Baily et al. [69]	Icolens	52	12	90% N8 or better (approximately J5)	98% ≤ 20/60	77%	NR	2.5%	90%	11 eyes explantation
Emmetropia	Dexl et al. [70]	Kamra inlay	24	12	92% ≤ J3	100% = 20/20	16.7%	4.2%	NR	mean score 4.9*	0%
Emmetropia	Dexl et al. [71]	Kamra inlay	32	24	Mean acuity 0.24 logRAD between J2 and J3)	Mean 20/16	3.1%	NR	NR	NR	0%.
Patients with phakic IOLs	Huseynova et al. [72]	Kamra inlay	3	3	Case 1 J2, Case 2 J4, Case 3 J5	Case 1 20/16, Case 2 20/20, Case 3 20/20	0%	0%	33%	NR	NR
Emmetropia	Seyeddain et al. [73]	Kamra inlay	24	24	96% ≤ 20/32 (approx. J2)	100% ≤ 20/32	16.7%	0%??	NR	NR	0%
Emmetropia	Seyeddain et al. [74]	Kamra inlay	32	24	96.9% ≤ J3	100% ≤ 20/20	40.6%	9.4%	12.5% completely independent, 75% reported occasional use.	75%	3 eyes
Emmetropia	Seyeddain et al. [75]	Kamra inlay	32	36	97% ≤ J3	100% ≤ 20/32	28.3%	3.1%	12.5% completely independent, 43.7% reported occasional use.	84.5%	3 eyes
Past history of LASIK	Tomita et al. [36]	Kamra inlay	223	6	83% ≤ J3	100% ≤ 20/20	14%	0%	Mean score 5.0**	NR	NR
Hyperopia, Emmetropia Myopia.	Tomita et al. [37]	Kamra inlay + bilateral LASIK	180	6	100% ≤ J3 (hyperopes and emmetropes) 95% ≤ J3 (myopes)	100% ≤ 20/40 (hyperopes, emmetropes) 93% ≤ 20/40 (myopes)	NR	CDVA*** 5% of myopes. CNVA**** 2% of myopes.		mean score 4.9 in the hyperopic group, 5.0 in emmetropic and myopic group.**	2 eyes (1.1%)
Emmetropes or post-LASIK	Yilmaz et al. [35]	Kamra inlay	39	52.2	96% ≤ J3	97% ≤ 20/32	27% lost more than 5 letters	5%	NR	Generally all patients were satisfied	4 eyes underwent explantation.
Emmetropes	Dexl et al. [34]	Kamra inlay	32	60	74.2% ≤ J3	93.5% ≤ 20/32	45.2%	22.6%	NR	83.9%	4 eyes (1/4 explantation).

* on a scale of 1 to 7 (1 = not satisfied, 7 = very satisfied) ** 1 = least satisfied/need reading glasses, 7 = most satisfied/do not need reading glasses
*** Corrected distance visual acuity **** Corrected near visual acuity

Overall, the use of corneal inlays to treat presbyopia has been met with positive results, however patients should be aware of the possible development of post-operative symptoms such as glare, halos and dry eyes, as well the possibility of decreased distance visual acuity. Despite these risks, patient satisfaction following inlay implantation is high and the demand for this procedure in the U.S is likely to increase following recent U.S FDA approval of the Kamra inlay.

Conductive Keratoplasty

Conductive keratoplasty (CK) is a non-ablative technique that uses radiofrequency energy to reshape the cornea, approved by the U.S FDA in 2002 for the treatment of previously untreated, low levels of spherical hyperopia (+0.75 to +3.00 diopters). A series of 8 to 32 spots are applied in up to three rings in the peripheral cornea stroma, resulting in shrinking of collagen between the spots and subsequent steepening of the central cornea. It is similar in concept to laser

thermal keratoplasty (LTK), which uses a holmium:YAG laser to mechanically steepen the cornea. While LTK gained significant attention in the 1990s, long-term studies showed suboptimal stability of effect [42]. It was hypothesized that the high amount of regression following LTK was due partly to its suboptimal penetration in corneal tissue. Approximately 350 μm of water, which accounts for 75% of the cornea's stromal mass, is penetrated by the holmium:YAG laser [43]. Based on a corneal thickness of 540 μm , this leads to approximately 65% penetration of corneal depth. CK, on the other hand, penetrates approximately 80% of the cornea's depth based on histology studies [44].

While CK has proven to be an effective procedure for the treatment of hyperopia, its effects are not permanent. Studies have shown a significant amount of regression in long-term follow-up [45, 46]. One study reported a change in the manifest spherical equivalent from +1.45D pre-operatively, to +0.295D at the 23-month follow-up visit, to +1.394D at mean final follow-up of 73 months; no eye lost more than 1 line of BSCVA [47].

Naturally, the use of CK as an effective, safe, although temporary, treatment for hyperopia led to the investigation of its use as a treatment for presbyopia. A prospective, multicenter, FDA clinical phase III trial evaluating CK's safety and efficacy in both emmetropic and hyperopic presbyopes found that 66% of the eyes treated for near had a manifest refractive spherical equivalent (MRSE) within 0.5D of the intended correction, 89% were within 1.0D, and 100% were within 2.0D at the six-month follow-up visit [48]. The MRSE mean change was 0.04D per month between months 1 and 3, and 0.06D per month between months 3 and 6. 76% of patients reported being satisfied or very satisfied with the procedure. The results of this study as well as others on the use of CK in the treatment of presbyopia are summarized in Table 4. In 2004, the U.S FDA granted approval for the use of CK in the treatment of presbyopia in non-dominant eyes with a goal target manifest refraction of -1.00 to -2.00D. While CK has a role in the treatment of presbyopia, the long-term stability of its effects in presbyopic eyes is uncertain. Given the well-documented regression of effect in hyperopic eyes treated with CK, it is likely that a similar effect is observed in presbyopic eyes. CK likely affords an efficacious yet temporary solution to presbyopia.

Table 4. Conductive Keratoplasty Outcomes in Presbyopic Patients. NR = Not Reported.

Study Group	Author	Number of patients	Follow-up in months	Postoperative Uncorrected Near Visual Acuity (UNVA)	Postoperative Uncorrected Distance Visual Acuity (UDVA)	1 Line Loss of Best-Corrected Visual Acuity (% of eyes)	2 Lines loss of Best-Corrected Visual Acuity (% of eyes)	Post-operative Spectacle Independence (% of pts.)	Post-operative satisfaction (% of pts.)	Re-treatment Number/% of eyes/pts.
Eyes with no previous surgery and eyes s/p LASIK	Tomita <i>et al.</i> [76]	38	12	Mean in the non-LASIK group: 0.71 logMAR (approx. 20/100). Mean in the LASIK group: 0.64 logMAR (between 20/80 and 20/100).	Mean in non-LASIK group: 0.28 logMAR (between 20/30 and 20/40). Mean in the LASIK group: 0.3 logMAR (20/40).	NR	NR	NR	NR	NR
Eyes with binocular monofocal IOL implantation	Ye <i>et al.</i> [77]	27	12	0.30 logMAR 100% \leq J5	0.37 logMAR(20/50 or better)	0%	0%	81.48%	81.48%	0%
Near plano	Stahl <i>et al.</i> [78]	10	36	78% \leq J3	78% \leq 20/20	0%	0%	77%	NR	NR
Hyperopia and Emmetropia	McDonald <i>et al.</i> [48]	143	6	85% \leq J3	85% \leq 20/25	NR	1%	NR	76%	0%

INTRACOR

INTRACOR is a recently developed procedure that delivers femtosecond laser energy entirely within the stroma to treat presbyopia and low levels of hyperopia. It utilizes the TECHNOLAS femtosecond laser system manufactured by Technolas Perfect Vision GmbH in Munich, Germany. This system delivers laser pulses in a customizable pattern from the posterior stroma to the anterior stroma without impacting the endothelium or Bowman's layer. This leads to central steepening of the cornea (Fig. 6). In 2009 Ruiz *et al.* reported an improvement in mean UNVA from 0.27 (20/80 approx.) pre-operatively to 1.0 (20/20) in presbyopic eyes with low amounts of hyperopia or myopia at the 12-month

follow-up visit; however, only 27% of eyes were followed for 12 months [49]. UDVA also improved, from 0.86 (20/25 approx.) to 1.07 (20/20 approx.). A mild myopic shift was observed in these eyes with a change in mean spherical equivalent refraction from +0.23 to -0.30. 2.4% of eyes lost 2 lines of CDVA at the 6-month follow-up; these eyes were not followed for 12 months so it is unknown if the lost lines were regained. Of the eyes that were followed for 12 months, none lost any lines. In 2011, Holzer *et al.* reported similar results in presbyopic eyes with mild hyperopia that underwent treatment with INTRACOR, with much better retention of patients (92%) at the 12-month follow-up visit [50]. Mean UNVA improved from 0.7 logMAR (20/100) pre-operatively to 0.2 logMAR (20/32). Mean UDVA remained stable at 0.1 logMAR (20/25). A median myopic shift of 0.5D was observed. 7.1% of patients had lost 2 lines of CDVA at the 12-month follow-up visit. 71.4% of patients were satisfied with the procedure. Based on a subjective questionnaire, glare and halos were felt to be mildly noticeable.

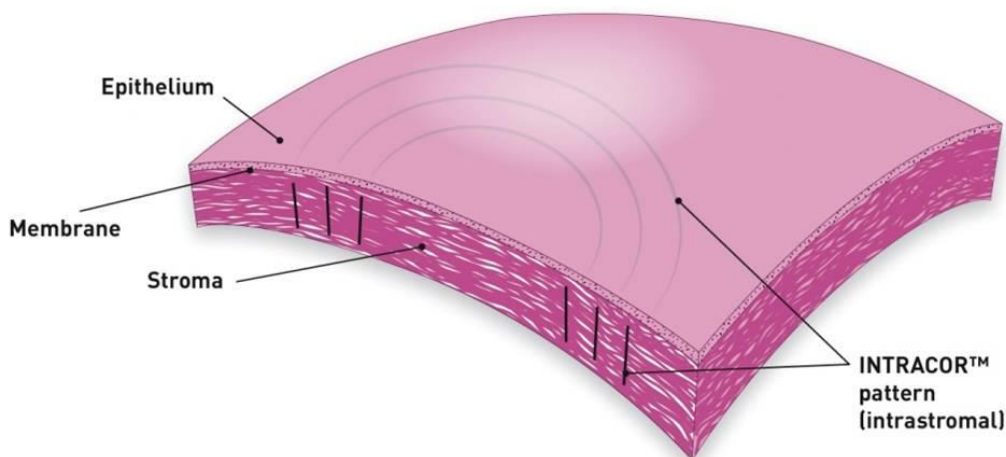


Fig. (6). INTRACOR. Permission for use of this image was obtained from Bausch + Lomb Technolas.

A recently published study by Khoramnia *et al.* evaluated a modified delivery of the laser pulses over six concentric rings instead of the standard five to test the assumption that a larger optical zone would result in even greater improvement of near visual acuity [51]. As expected, a greater improvement in UNVA was observed over a 36-month follow-up period, however a greater loss of CDVA was also observed compared to previously reported loss of CDVA in prior studies, leading the authors to recommend the standard five-ring laser pulse delivery technique.

The above studies demonstrate INTRACOR’s efficacy in the treatment of presbyopia with substantial improvements in UNVA with minimal effect on UDVA. Photopic side effects seem to be minimal, however the loss of CDVA does raise concerns regarding the safety of the procedure, particularly given its irreversible nature. In 2013, a case report was published describing the development of unilateral keratectasia in a patient who underwent unilateral INTRACOR treatment for presbyopia, further questioning the safety of this procedure [52]. While many patients have fared well with INTRACOR, its effects on corneal mechanical stability are uncertain at this time and merit further study. Table 5 summarizes the results of recent studies on INTRACOR as a treatment option for presbyopia.

Table 5. INTRACOR Outcomes in Presbyopic Patients. NR = Not Reported.

Study group	Author	Number of patients	Follow-up	Postoperative Uncorrected Near Visual Acuity (UNVA)	Postoperative Uncorrected Distance Visual Acuity (UDVA)	1 Line Loss of Best-Corrected Visual Acuity (% of eyes)	2 Lines loss of Best-Corrected Visual Acuity (% of eyes)	Post-operative Spectacle Independence (% of pts)	Post-operative satisfaction (% of pts)	Re-treatment Number/%of eyes/pts
Mild Hyperopes	Khoramnia <i>et al.</i> [51]	20	36	SDRG* 100% ≤ J1. MDRG** 82.5% ≤ J3. LDRG*** 80.0% ≤ J1.	SRDG: 100%: ≤ 20/32 MRDG: 80% ≤ 20/40. LRDG: 100% ≤ 20/40.	SRDG: 75.0%CDVA, 25.0%CNVA. MRDG: 20.0%CDVA, 40.0% CNVA. LRDG: 33.3%CDVA, 50.0%CNVA.	SRDG: 0.0%CDVA/CNVA. MRDG: 80.0% CDVA, 40.0% CNVA. LRDG: 0.0% CDVA, 16.7% CNVA.	NR	80%	NR

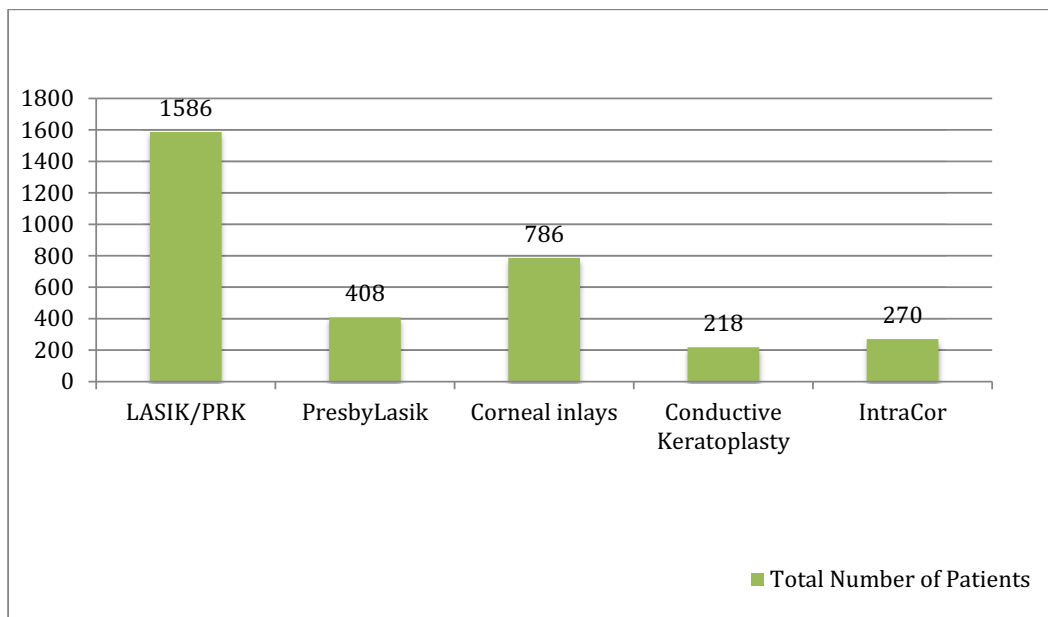
(Table 5) contd....

Study group	Author	Number of patients	Follow-up	Postoperative Uncorrected Near Visual Acuity (UNVA)	Postoperative Uncorrected Distance Visual Acuity (UDVA)	1 Line Loss of Best-Corrected Visual Acuity (% of eyes)	2 Lines loss of Best-Corrected Visual Acuity (% of eyes)	Post-operative Spectacle Independence (% of pts)	Post-operative satisfaction (% of pts)	Re-treatment Number/%of eyes/pts
Emmetropes	Thomas <i>et al.</i> [79]	20	12	Mean: 20/25 (J1).	Mean: 20/20.	45%	15.0%	NR	83%	NR
Mild hyperopes	Menassa <i>et al.</i> [80]	25	18	Median: 0.2 logMAR (approx J2).	Median: 0.201 logMAR	52.0%	26%	NR	NR	NR
Mild hyperopes	Holzer <i>et al.</i> [50]	63	12	70.7% ≤ J3	95.0% ≤ 20/40	21.4%	7.1%	NR	71.4%	NR
Emmetropes and mild hyperopes	Bohac <i>et al.</i> [81]	72	3	88.23% ≤ J3	mean 20/20	NR	NR	NR	98.0%	NR
Low hyperopes	Holzer <i>et al.</i> [82]	25	3	0.26 logMAR (between J3 and J2).	0.05 logMAR (between 20/20 and 20/25)	42%	8%	NR	NR	NR
Low myopia, emmetropia, low hyperopia	Ruiz <i>et al.</i> [49]	45	6-12	91.6 J2 or better	89.2% 20/25 or better	0%	0% at 1 year	0%	All patients were generally pleased with their results.	NR

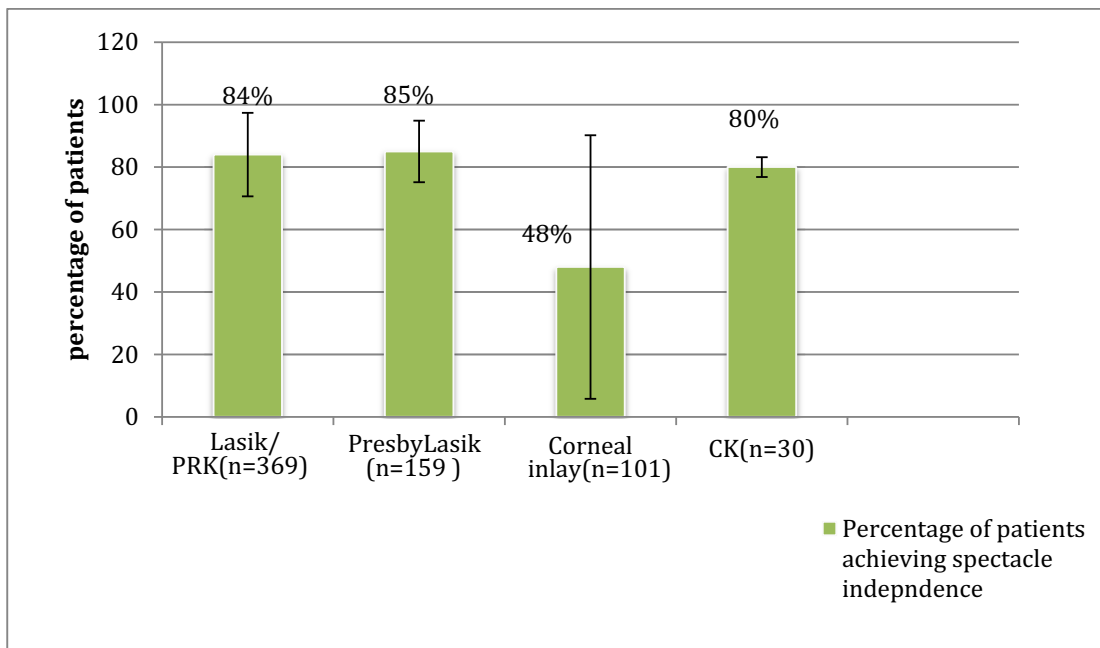
* Small ring diameter group ** Medium ring diameter group *** Large ring diameter group (Graph 1) Total Number of Patients Based on Literature Review. (Graph 2) Patients Achieving Spectacle Independence and Standard Deviation (Mean follow-up 16 months) (Graph 3) Patient Satisfaction After Surgery (Mean follow-up 14.5 months)

Collective Data Analysis

The total numbers of patients in all the studies included in this review article are shown in (Graph 1). Graph (2) shows the post-operative spectacle independence as a percentage of patients. Four studies in the LASIK/PRK group, four studies in the presbyLASIK group, seven studies in the corneal inlays group and two studies in the conductive keratoplasty group reported post-operative spectacle independence. In the LASIK/PRK group, an average of 84% of patients achieved post-operative spectacle independence with a standard deviation of ±13.35 (68%-97% range) and an average follow-up of 12 months. In the presbyLASIK group, 85% ±9.85 (72-91% range) achieved spectacle independence with an average follow-up of 13 months. In the corneal inlay group 48% ±42.2 (2.5-98% range, mean follow-up 16 months) achieved spectacle independence, showing a large amount of variability in the data. In the conductive keratoplasty group, 80% ±3.16 (77-81.5% range) achieved spectacle independence with an average follow-up of 24 months.

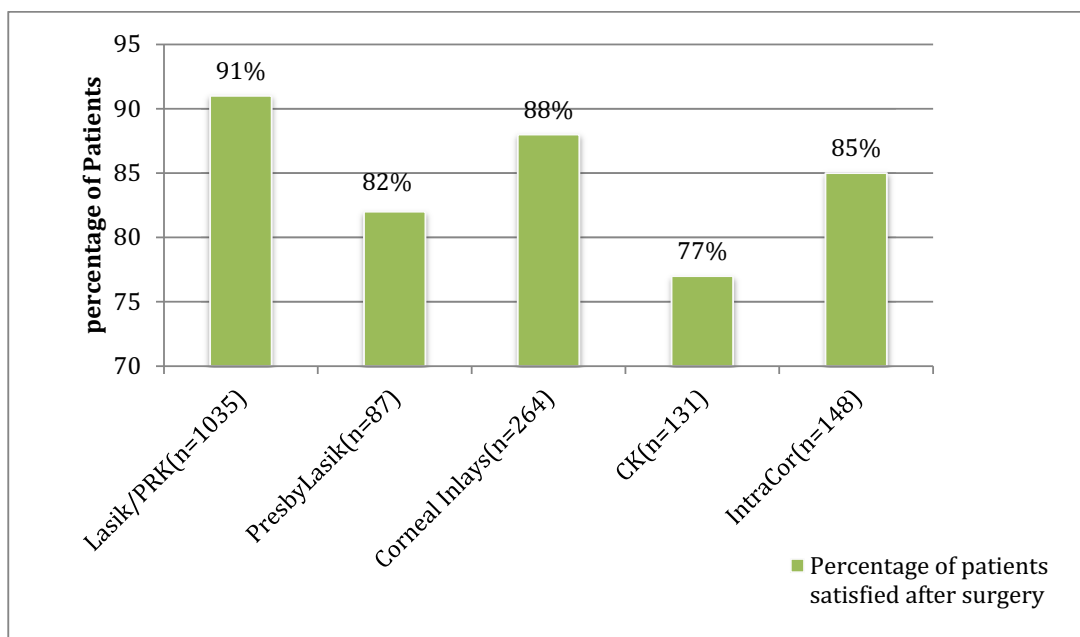


Graph (1). Total Number of Patients Based on Literature Review.



Graph (2). Patients Achieving Spectacle Independence and Standard Deviation (Mean follow-up 16 months).

The percentage of patients satisfied with the respective procedures is shown in (Graph 3). Nine studies in the LASIK/PRK group, four studies in the presbyLASIK group, eight studies in the corneal inlays group, two studies in the conductive keratoplasty group and four studies in the INTRACOR group reported post-operative patient satisfaction. In the LASIK/PRK group, an average of 91% of patients with a standard deviation ± 5.2 (80-94% range) were satisfied with the procedure and average follow-up was 8 months. In the presbyLASIK group, 82% ± 11.58 (76-100% range) were satisfied with the procedure and average follow-up was 7.5 months. In the corneal inlays group, 86% ± 7.9 (75-100% range) were satisfied with the procedure and average follow-up was 23 months. In the conductive keratoplasty group, 77% ± 3.9 (76-81.5% range) were satisfied post-operatively and average follow-up was 9 months. In the INTRACOR group, 85% ± 11 (71-98% range) were satisfied with the procedure and average follow-up was 16 months.



Graph (3). Patient Satisfaction After Surgery (Mean follow-up 14.5 months).

CONCLUSION

Modifications to existing corneal procedures and recent technological advances have led to the development of creative and efficacious corneal procedures for the treatment of presbyopia. A number of surgical options currently exist for patients who desire independence from spectacles. In determining the appropriate procedure for each individual patient, a detailed discussion should be held between surgeon and patient, with careful assessment of patient age, lifestyle, and occupational needs. Expectations should be clearly determined prior to any surgical intervention. While the above procedures have demonstrated high efficacy and show great promise, we look forward to further advances that aim to reliably re-create the lens's natural ability to accommodate with good efficacy to reach what has commonly been referred to as the "final frontier" of refractive surgery.

CONFLICT OF INTEREST

The authors confirm that this article content has no conflict of interest.

ACKNOWLEDGEMENTS

Declared none.

REFERENCES

- [1] Glasser A, Kaufman PL. The mechanism of accommodation in primates. *Ophthalmology* 1999; 106(5): 863-72. [[http://dx.doi.org/10.1016/S0161-6420\(99\)00502-3](http://dx.doi.org/10.1016/S0161-6420(99)00502-3)] [PMID: 10328382]
- [2] Schachar RA. Cause and treatment of presbyopia with a method for increasing the amplitude of accommodation. *Ann Ophthalmol* 1992; 24(12): 445-7, 452. [PMID: 1485739]
- [3] Spierer A, Shalev B. Presbyopia among normal individuals. *Graefes Arch Clin Exp Ophthalmol* 2003; 241(2): 101-5. [<http://dx.doi.org/10.1007/s00417-002-0606-4>] [PMID: 12605263]
- [4] Pointer JS. The presbyopic add. III. Influence of the distance refractive type. *Ophthalmic Physiol Opt* 1995; 15(4): 249-53. [[http://dx.doi.org/10.1016/0275-5408\(94\)00023-S](http://dx.doi.org/10.1016/0275-5408(94)00023-S)] [PMID: 7667017]
- [5] Abraham LM, Kuriakose T, Sivanandam V, Venkatesan N, Thomas R, Muliylil J. Amplitude of accommodation and its relation to refractive errors. *Indian J Ophthalmol* 2005; 53(2): 105-8. [<http://dx.doi.org/10.4103/0301-4738.16173>] [PMID: 15976465]
- [6] Miranda MN. The geographic factor in the onset of presbyopia. *Trans Am Ophthalmol Soc* 1979; 77: 603-21. [PMID: 545835]
- [7] Nirmalan PK, Krishnaiah S, Shamanna BR, Rao GN, Thomas R. A population-based assessment of presbyopia in the state of Andhra Pradesh, south India: the Andhra Pradesh Eye Disease Study. *Invest Ophthalmol Vis Sci* 2006; 47(6): 2324-8. [<http://dx.doi.org/10.1167/iovs.05-1192>] [PMID: 16723440]
- [8] Pointer JS. The presbyopic add. II. Age-related trend and a gender difference. *Ophthalmic Physiol Opt* 1995; 15(4): 241-8. [[http://dx.doi.org/10.1016/0275-5408\(94\)00022-R](http://dx.doi.org/10.1016/0275-5408(94)00022-R)] [PMID: 7667016]
- [9] Duarte WR, Barros AJ, Dias-da-Costa JS, Cattán JM. Prevalence of near vision deficiency and related factors: A population-based study. *Cad Saude Publica* 2003; 19(2): 551-9. [<http://dx.doi.org/10.1590/S0102-311X2003000200022>] [PMID: 12764471]
- [10] Hofstetter HW. Further data on presbyopia in different ethnic groups. *Am J Optom Arch Am Acad Optom* 1968; 45(8): 522-7. [<http://dx.doi.org/10.1097/00006324-196808000-00004>] [PMID: 5244428]
- [11] Holden BA, Fricke TR, Ho SM, *et al*. Global vision impairment due to uncorrected presbyopia. *Arch Ophthalmol* 2008; 126(12): 1731-9.
- [12] McDonnell PJ, Lee P, Spritzer K, Lindblad AS, Hays RD. Associations of presbyopia with vision-targeted health-related quality of life. *Arch Ophthalmol* 2003; 121(11): 1577-81.
- [13] Jain S, Arora I, Azar DT. Success of monovision in presbyopes: review of the literature and potential applications to refractive surgery. *Surv Ophthalmol* 1996; 40(6): 491-9. [[http://dx.doi.org/10.1016/S0039-6257\(96\)82015-7](http://dx.doi.org/10.1016/S0039-6257(96)82015-7)] [PMID: 8724641]
- [14] Jain S, Ou R, Azar DT. Monovision outcomes in presbyopic individuals after refractive surgery. *Ophthalmology* 2001; 108(8): 1430-3. [[http://dx.doi.org/10.1016/S0161-6420\(01\)00647-9](http://dx.doi.org/10.1016/S0161-6420(01)00647-9)] [PMID: 11470695]
- [15] Hersh PS, Steinert RF, Brint SF. Photorefractive keratectomy versus laser in situ keratomileusis: comparison of optical side effects. *Ophthalmology* 2000; 107(5): 925-33. [[http://dx.doi.org/10.1016/S0161-6420\(00\)00059-2](http://dx.doi.org/10.1016/S0161-6420(00)00059-2)] [PMID: 10811085]
- [16] Hersh PS, Fry KL, Bishop DS. Incidence and associations of retreatment after LASIK. *Ophthalmology* 2003; 110(4): 748-54. [[http://dx.doi.org/10.1016/S0161-6420\(02\)01981-4](http://dx.doi.org/10.1016/S0161-6420(02)01981-4)] [PMID: 12689897]

- [17] Hu DJ, Feder RS, Basti S, *et al.* Predictive formula for calculating the probability of LASIK enhancement. *J Cataract Refract Surg* 2004; 30(2): 363-8.
[[http://dx.doi.org/10.1016/S0886-3350\(03\)00611-4](http://dx.doi.org/10.1016/S0886-3350(03)00611-4)] [PMID: 15030825]
- [18] Netto MV, Wilson SE. Flap lift for LASIK retreatment in eyes with myopia. *Ophthalmology* 2004; 111(7): 1362-7.
[<http://dx.doi.org/10.1016/j.ophtha.2003.11.009>] [PMID: 15234138]
- [19] Perlman EM, Reinert SE. Factors influencing the need for enhancement after laser *in situ* keratomileusis. *J Refract Surg Thorofare NJ* 1995 2004; 20(6): 783-9.
- [20] Bailey MD, Mitchell GL, Dhaliwal DK, Boxer Wachler BS, Zadnik K. Patient satisfaction and visual symptoms after laser in situ keratomileusis. *Ophthalmology* 2003; 110(7): 1371-8.
[[http://dx.doi.org/10.1016/S0161-6420\(03\)00455-X](http://dx.doi.org/10.1016/S0161-6420(03)00455-X)] [PMID: 12867394]
- [21] Pop M, Payette Y. Risk factors for night vision complaints after LASIK for myopia. *Ophthalmology* 2004; 111(1): 3-10.
[<http://dx.doi.org/10.1016/j.ophtha.2003.09.022>] [PMID: 14711706]
- [22] Ghanem RC, de la Cruz J, Tobaigy FM, Ang LP, Azar DT. LASIK in the presbyopic age group: safety, efficacy, and predictability in 40- to 69-year-old patients. *Ophthalmology* 2007; 114(7): 1303-10.
[<http://dx.doi.org/10.1016/j.ophtha.2006.10.026>] [PMID: 17382397]
- [23] Alió JL, Amparo F, Ortiz D, Moreno L. Corneal multifocality with excimer laser for presbyopia correction. *Curr Opin Ophthalmol* 2009; 20(4): 264-71.
[<http://dx.doi.org/10.1097/ICU.0b013e32832a7ded>] [PMID: 19537363]
- [24] Uy E, Go R. Pseudoaccommodative cornea treatment using the NIDEK EC-5000 CXIII excimer laser in myopic and hyperopic presbyopes. *J Refract Surg (Thorofare NJ: 1995)* 2009; 25(1 Suppl): S148-55.
[PMID: 19248545]
- [25] Epstein RL, Gurgos MA. Presbyopia treatment by monocular peripheral presbyLASIK. *J Refract Surg Thorofare NJ* 1995 2009; 25(6): 516-23.
- [26] Alió JL, Chaubard JJ, Caliz A, Sala E, Patel S. Correction of presbyopia by technovision central multifocal LASIK (presbyLASIK). *J Refract Surg Thorofare NJ* 1995 2006; 22(5): 453-60.
- [27] Jung SW, Kim MJ, Park SH, Joo C-K. Multifocal corneal ablation for hyperopic presbyopes. *J Refract Surg Thorofare NJ* 1995 2008; 24(9): 903-10.
- [28] Patel S, Alió JL, Feinbaum C. Comparison of Acri. Smart multifocal IOL, crystalens AT-45 accommodative IOL, and Technovision presbyLASIK for correcting presbyopia. *J Refract Surg Thorofare NJ* 1995 2008; 24(3): 294-9.
- [29] Barraquer J. Queratomileusis para la correccion de la miopia. *Arch Soc Am Oftalmol Optom* 1964; (5): 27-48.
- [30] Reim M. Chirurgische Anatomie, Physiologie, Biochemie sowie Fragen der Inlay-Technik. *Ophthalmologe* 1992; 89(2): 109-18. [Surgical anatomy, physiology, biochemistry and questions on the inlay technique].
[PMID: 1600317]
- [31] Alió JL, Mulet ME, Zapata LF, Vidal MT, De Rojas V, Javaloy J. Intracorneal inlay complicated by intrastromal epithelial opacification. *Arch Ophthalmol (Chic Ill: 1960)* 2004; 122(10): 1441-6.
[<http://dx.doi.org/10.1001/archophth.122.10.1441>] [PMID: 15477454]
- [32] Deg JK, Binder PS. Histopathology and clinical behavior of polysulfone intracorneal implants in the baboon model. *Polysulfone lens implants. Ophthalmology* 1988; 95(4): 506-15.
[[http://dx.doi.org/10.1016/S0161-6420\(88\)33169-6](http://dx.doi.org/10.1016/S0161-6420(88)33169-6)] [PMID: 2459644]
- [33] Lane SL, Lindstrom RL, Cameron JD, *et al.* Polysulfone corneal lenses. *J Cataract Refract Surg* 1986; 12(1): 50-60.
[[http://dx.doi.org/10.1016/S0886-3350\(86\)80057-8](http://dx.doi.org/10.1016/S0886-3350(86)80057-8)] [PMID: 3083093]
- [34] Dextl AK, Jell G, Strohmaier C, *et al.* Long-term outcomes after monocular corneal inlay implantation for the surgical compensation of presbyopia. *J Cataract Refract Surg* 2015; 41(3): 566-75.
[<http://dx.doi.org/10.1016/j.jcrs.2014.05.051>] [PMID: 25726504]
- [35] Yılmaz OF, Alagöz N, Pekel G, *et al.* Intracorneal inlay to correct presbyopia: Long-term results. *J Cataract Refract Surg* 2011; 37(7): 1275-81.
[<http://dx.doi.org/10.1016/j.jcrs.2011.01.027>] [PMID: 21570249]
- [36] Tomita M, Kanamori T, Waring GO IV, Nakamura T, Yukawa S. Small-aperture corneal inlay implantation to treat presbyopia after laser in situ keratomileusis. *J Cataract Refract Surg* 2013; 39(6): 898-905.
[<http://dx.doi.org/10.1016/j.jcrs.2013.01.034>] [PMID: 23688876]
- [37] Tomita M, Kanamori T, Waring GO IV, *et al.* Simultaneous corneal inlay implantation and laser in situ keratomileusis for presbyopia in patients with hyperopia, myopia, or emmetropia: six-month results. *J Cataract Refract Surg* 2012; 38(3): 495-506.
[<http://dx.doi.org/10.1016/j.jcrs.2011.10.033>] [PMID: 22340607]
- [38] Tomita M, Waring GO IV. One-year results of simultaneous laser in situ keratomileusis and small-aperture corneal inlay implantation for hyperopic presbyopia: comparison by age. *J Cataract Refract Surg* 2015; 41(1): 152-61.
[<http://dx.doi.org/10.1016/j.jcrs.2014.05.037>] [PMID: 25532642]

- [39] Garza EB, Gomez S, Chayet A, Dishler J. One-year safety and efficacy results of a hydrogel inlay to improve near vision in patients with emmetropic presbyopia. *J Refract Surg Thorofare NJ* 1995 2013; 29(3): 166-72.
- [40] Chayet A, Barragan Garza E. Combined hydrogel inlay and laser in situ keratomileusis to compensate for presbyopia in hyperopic patients: one-year safety and efficacy. *J Cataract Refract Surg* 2013; 39(11): 1713-21. [<http://dx.doi.org/10.1016/j.jcrs.2013.05.038>] [PMID: 24021565]
- [41] Limnopoulou AN, Bouzoukis DI, Kymionis GD, *et al.* Visual outcomes and safety of a refractive corneal inlay for presbyopia using femtosecond laser. *J Refract Surg Thorofare NJ* 1995 2013; 29(1): 12-8.
- [42] Koch DD, Kohnen T, McDonnell PJ, Menefee R, Berry M. Hyperopia correction by noncontact holmium:YAG laser thermal keratoplasty: U.S. phase IIA clinical study with 2-year follow-up. *Ophthalmology* 1997; 104(11): 1938-47. [[http://dx.doi.org/10.1016/S0161-6420\(97\)30003-7](http://dx.doi.org/10.1016/S0161-6420(97)30003-7)] [PMID: 9373130]
- [43] Choi B, Kim J, Welch AJ, Pearce JA. Dynamic impedance measurements during radio-frequency heating of cornea. *IEEE Trans Biomed Eng* 2002; 49(12 Pt 2): 1610-6. [<http://dx.doi.org/10.1109/TBME.2002.805471>] [PMID: 12549743]
- [44] McDonald MB, Davidorf J, Maloney RK, Manche EE, Hersh P. Conductive keratoplasty for the correction of low to moderate hyperopia: 1-year results on the first 54 eyes. *Ophthalmology* 2002; 109(4): 637-49. [[http://dx.doi.org/10.1016/S0161-6420\(01\)01022-3](http://dx.doi.org/10.1016/S0161-6420(01)01022-3)] [PMID: 11927418]
- [45] McDonald MB. Conductive keratoplasty: a radiofrequency-based technique for the correction of hyperopia. *Trans Am Ophthalmol Soc* 2005; 103: 512-36. [PMID: 17057816]
- [46] Lin DY, Manche EE. Two-year results of conductive keratoplasty for the correction of low to moderate hyperopia. *J Cataract Refract Surg* 2003; 29(12): 2339-50. [<http://dx.doi.org/10.1016/j.jcrs.2003.09.022>] [PMID: 14709295]
- [47] Ehrlich JS, Manche EE. Regression of effect over long-term follow-up of conductive keratoplasty to correct mild to moderate hyperopia. *J Cataract Refract Surg* 2009; 35(9): 1591-6. [<http://dx.doi.org/10.1016/j.jcrs.2009.05.010>] [PMID: 19683158]
- [48] McDonald MB, Durrie D, Asbell P, Maloney R, Nichamin L. Treatment of presbyopia with conductive keratoplasty: six-month results of the 1-year United States FDA clinical trial. *Cornea* 2004; 23(7): 661-8. [<http://dx.doi.org/10.1097/01.icc.0000126321.13143.a0>] [PMID: 15448490]
- [49] Ruiz LA, Cepeda LM, Fuentes VC. Intrastromal correction of presbyopia using a femtosecond laser system. *J Refract Surg Thorofare NJ* 1995 2009; 25(10): 847-54.
- [50] Holzer MP, Knorz MC, Tomalla M, Neuhann TM, Auffarth GU. Intrastromal femtosecond laser presbyopia correction: 1-year results of a multicenter study. *J Refract Surg Thorofare NJ* 1995 2012; 28(3): 182-8.
- [51] Khoramnia R, Fitting A, Rabsilber TM, Thomas BC, Auffarth GU, Holzer MP. Intrastromal femtosecond laser surgical compensation of presbyopia with six intrastromal ring cuts: 3-year results. *Br J Ophthalmol* 2015; 99(2): 170-6. [<http://dx.doi.org/10.1136/bjophthalmol-2014-305642>] [PMID: 25185255]
- [52] Taneri S, Oehler S. Keratectasia after treating presbyopia with INTRACOR followed by SUPRACOR enhancement. *J Refract Surg Thorofare NJ* 1995 2013; 29(8): 573-6.
- [53] Falcon C, Norero Martínez M, Sancho Miralles Y. Laser Blended Vision for presbyopia: Results after 3 years. *J Fr Ophtalmol* 2015; 38(5): 431-9. [<http://dx.doi.org/10.1016/j.jfo.2015.02.002>] [PMID: 25910743]
- [54] Levinger E, Trivizki O, Pokroy R, Levartovsky S, Sholohov G, Levinger S. Monovision surgery in myopic presbyopes: visual function and satisfaction. *Optom Vis Sci* 2013; 90(10): 1092-7. [<http://dx.doi.org/10.1097/OPX.000000000000002>] [PMID: 24064524]
- [55] Reinstein DZ, Carp GI, Archer TJ, Gobbe M. LASIK for presbyopia correction in emmetropic patients using aspheric ablation profiles and a micro-monovision protocol with the Carl Zeiss Meditec MEL 80 and VisuMax. *J Refract Surg Thorofare NJ* 1995 2012; 28(8): 531-41.
- [56] Alarcón A, Anera RG, Villa C, Jiménez del Barco L, Gutierrez R. Visual quality after monovision correction by laser in situ keratomileusis in presbyopic patients. *J Cataract Refract Surg* 2011; 37(9): 1629-35. [<http://dx.doi.org/10.1016/j.jcrs.2011.03.042>] [PMID: 21752590]
- [57] Garcia-Gonzalez M, Teus MA, Hernandez-Verdejo JL. Visual outcomes of LASIK-induced monovision in myopic patients with presbyopia. *Am J Ophthalmol* 2010; 150(3): 381-6. [<http://dx.doi.org/10.1016/j.ajo.2010.03.022>] [PMID: 20542487]
- [58] Reinstein DZ, Archer TJ, Gobbe M. LASIK for myopic astigmatism and presbyopia using non-linear aspheric micro-monovision with the Carl Zeiss Meditec MEL 80 platform. *J Refract Surg Thorofare NJ* 1995 2011; 27(1): 23-37.
- [59] Reinstein DZ, Couch DG, Archer TJ. LASIK for hyperopic astigmatism and presbyopia using micro-monovision with the Carl Zeiss Meditec MEL80 platform. *J Refract Surg Thorofare NJ* 1995 2009; 25(1): 37-58.
- [60] Braun EH, Lee J, Steinert RF. Monovision in LASIK. *Ophthalmology* 2008; 115(7): 1196-202.

- [http://dx.doi.org/10.1016/j.opht.2007.09.018] [PMID: 18061266]
- [61] Levinger E, Geyer O, Baltinsky Y, Levinger S. Binocular function and patient satisfaction after monovision induced by laser in situ keratomileusis (lasik). *Harefuah* 2006; 145(3): 186-190, 246-247. [PMID: 16599313]
- [62] Reilly CD, Lee WB, Alvarenga L, Caspar J, Garcia-Ferrer F, Mannis MJ. Surgical monovision and monovision reversal in LASIK. *Cornea* 2006; 25(2): 136-8. [http://dx.doi.org/10.1097/01.ico.0000178722.19317.7b] [PMID: 16371770]
- [63] Miranda D, Krueger RR. Monovision laser in situ keratomileusis for pre-presbyopic and presbyopic patients. *J Refract Surg Thorofare NJ* 1995 2004; 20(4): 325-8.
- [64] Goldberg DB. Laser in situ keratomileusis monovision. *J Cataract Refract Surg* 2001; 27(9): 1449-55. [http://dx.doi.org/10.1016/S0886-3350(01)01001-X] [PMID: 11566531]
- [65] Abrieu-Lacaille M, Saib N, Rambaud C, et al. Management of presbyopic hyperopes by centered presbyLASIK. *J Fr Ophtalmol* 2014; 37(9): 682-8. [http://dx.doi.org/10.1016/j.jfo.2014.02.011] [PMID: 25262053]
- [66] Luger MH, Ewering T, Arba-Mosquera S. One-year experience in presbyopia correction with biaplectic multifocal central presbyopia laser in situ keratomileusis. *Cornea* 2013; 32(5): 644-52. [http://dx.doi.org/10.1097/ICO.0b013e31825f02f5] [PMID: 23086358]
- [67] Pinelli R, Ortiz D, Simonetto A, Bacchi C, Sala E, Alió JL. Correction of presbyopia in hyperopia with a center-distance, paracentral-near technique using the Technolas 217z platform. *J Refract Surg Thorofare NJ* 1995 2008; 24(5): 494-500.
- [68] Garza EB, Chayet A. Safety and efficacy of a hydrogel inlay with laser in situ keratomileusis to improve vision in myopic presbyopic patients: one-year results. *J Cataract Refract Surg* 2015; 41(2): 306-12. [http://dx.doi.org/10.1016/j.jcrs.2014.05.046] [PMID: 25661123]
- [69] Baily C, Kohnen T, OKeefe M. Preloaded refractive-addition corneal inlay to compensate for presbyopia implanted using a femtosecond laser: one-year visual outcomes and safety. *J Cataract Refract Surg* 2014; 40(8): 1341-8. [http://dx.doi.org/10.1016/j.jcrs.2013.11.047] [PMID: 25088635]
- [70] Dextl AK, Seyeddain O, Riha W, et al. One-year visual outcomes and patient satisfaction after surgical correction of presbyopia with an intracorneal inlay of a new design. *J Cataract Refract Surg* 2012; 38(2): 262-9. [http://dx.doi.org/10.1016/j.jcrs.2011.08.031] [PMID: 22138501]
- [71] Dextl AK, Seyeddain O, Riha W, Hohensinn M, Hitzl W, Grabner G. Reading performance after implantation of a small-aperture corneal inlay for the surgical correction of presbyopia: Two-year follow-up. *J Cataract Refract Surg* 2011; 37(3): 525-31. [http://dx.doi.org/10.1016/j.jcrs.2010.10.044] [PMID: 21262559]
- [72] Huseynova T, Kanamori T, Waring GO IV, Tomita M. Small-aperture corneal inlay in presbyopic patients with prior phakic intraocular lens implantation surgery: 3-month results. *Clin Ophthalmol* 2013; 7: 1683-6. [PMID: 24003304]
- [73] Seyeddain O, Bachernegg A, Riha W, et al. Femtosecond laser-assisted small-aperture corneal inlay implantation for corneal compensation of presbyopia: two-year follow-up. *J Cataract Refract Surg* 2013; 39(2): 234-41. [http://dx.doi.org/10.1016/j.jcrs.2012.09.018] [PMID: 23245507]
- [74] Seyeddain O, Riha W, Hohensinn M, Nix G, Dextl AK, Grabner G. Refractive surgical correction of presbyopia with the Acufocus small aperture corneal inlay: two-year follow-up. *J Refract Surg Thorofare NJ* 1995 2010; 26(10): 707-15.
- [75] Seyeddain O, Hohensinn M, Riha W, et al. Small-aperture corneal inlay for the correction of presbyopia: 3-year follow-up. *J Cataract Refract Surg* 2012; 38(1): 35-45. [http://dx.doi.org/10.1016/j.jcrs.2011.07.027] [PMID: 22018596]
- [76] Tomita M, Watabe M, Ito M, Tsuru T. Conductive keratoplasty for the treatment of presbyopia: comparative study between post- and non-LASIK eyes. *Clin Ophthalmol* 2011; 5: 231-7. [http://dx.doi.org/10.2147/OPHT.S16791] [PMID: 21386916]
- [77] Ye P, Xu W, Tang X, et al. Conductive keratoplasty for symptomatic presbyopia following monofocal intraocular lens implantation. *Clin Experiment Ophthalmol* 2011; 39(5): 404-11. [http://dx.doi.org/10.1111/j.1442-9071.2010.02464.x] [PMID: 21070548]
- [78] Stahl JE. Conductive keratoplasty for presbyopia: 3-year results. *J Refract Surg Thorofare NJ* 1995 2007; 23(9): 905-10.
- [79] Thomas BC, Fitting A, Auffarth GU, Holzer MP. Femtosecond laser correction of presbyopia (INTRACOR) in emmetropes using a modified pattern. *J Refract Surg Thorofare NJ* 1995 2012; 28(12): 872-8.
- [80] Menassa N, Fitting A, Auffarth GU, Holzer MP. Visual outcomes and corneal changes after intrastromal femtosecond laser correction of presbyopia. *J Cataract Refract Surg* 2012; 38(5): 765-73. [http://dx.doi.org/10.1016/j.jcrs.2011.11.051] [PMID: 22520302]
- [81] Bohac M, Gabrić N, Antić M, Draca N, Dekaris I. First results of Intracor procedure in Croatia. *Coll Antropol* 2011; 35(Suppl. 2): 161-6. [PMID: 22220426]

- [82] Holzer MP, Mannsfeld A, Ehmer A, Auffarth GU. Early outcomes of INTRACOR femtosecond laser treatment for presbyopia. *J Refract Surg* Thorofare NJ 1995 2009; 25(10): 855-61.

© 2017 Moussa *et al.*

This is an open access article distributed under the terms of the Creative Commons Attribution 4.0 International Public License (CC-BY 4.0), a copy of which is available at: <https://creativecommons.org/licenses/by/4.0/legalcode>. This license permits unrestricted use, distribution, and reproduction in any medium, provided the original author and source are credited.