

**UCLA**  
**Contemporary Music Score Collection**

**Title**

Unfading Echoes

**Permalink**

<https://escholarship.org/uc/item/28v8p8kq>

**Author**

Wu, Chao-Jung

**Publication Date**

2020

# Unfading Echoes

*for violin and tape*

2011

CHAO-JUNG WU

Duration: ca. 21 min.

# Notes

## Violin



Two violins are required; one normal tuned and another detuned as:

The piece starts with detuned violin; the violinist should change to specified violin when indicated.

If desired, the soloist may perform m.127~147 with tempo ad lib.; use Version [B] with separated sound-files.

\* In m.1~20, play on open strings as much as possible.

\* In m.10~20, finger the notes as if playing with normal-tuned violin.

## Tape

Version [A]: one stereo sound file, total length: ca. 20'36"

Version [B]: two stereo sound files: a sound engineer or a pedal (if tape is controlled by violinist) is needed to trigger the second clip.

Clip 1 (0'00"~10'00"): starts initially with violinist.

Clip 2 (13'12"~end): starts at m.127 with violinist's cue.

## Notation



(square notehead) use left hand tap on fingerboard



approx. pitch



highest pitch on indicated string



wide vibrato (if specified, vibrate with indicated pitch)



behind bridge (on string specified)



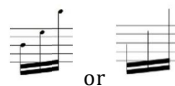
snap pizzicato (Bartók pizzicato)



ricochet



accel.



pitch ad lib

or



short gliss up/down after reach the pitch



longer gliss up/down after reach the pitch

♩ = 60  
Con sord.

Violin

*niente* *f* *mp* *fp* *f* *mp* *mf* *pp* *pp* *ppp* *mf* *p* *f*

Vln.

*mp* *pp* *sfz* *pp* *ff* *pp* *fp* *fp* *fp* *ff*

Vln.

*sfz* *mp* *f* *mf* *mp* *ff* *p* *pp* *f* *mp* *f* *mf* *p*

Time 1'00" 1'07"

Vln.

*ppp* *p* *mf* *niente* *niente* *mf*

Tape

*mp* *fp* *mf*

Tunings:

Time 1'14" 1'18" 1'22" 1'26"

Vln. 12

*f* *mp* *mf* *mp* *p* *mf* *p* *f* *p*

ord. .... sul ponticello

*mf* *mf* *niente* *fp* *niente* *mp*

1'16" (echo)

1'18"

Time 1'30" 1'35" 1'40"

Vln. 16

ord. *mp* *mf* *pp* *p* *f*

Con sord.

ord. .... sul tasto

ord.

*mf* *f* *p* *mp*

1'31" *mf* *f* *p* *mf*

8<sup>vb</sup>

Time 1'45" 1'49" 1'53" 1'57"

Vln. 19 Senza sord. *mf* *pp* niente *p* niente

Time 2'00" 2'04" 2'09" 2'14"

Vln. 23 \* Change to normal tuned violin pizz. *f* arco *f* *mf* *p* *f* *f* p

Time 2'21" | 2'28" | 2'34"

Vln. 27 arco *f* *sub. mp* *mf* *p* *f* *sub. mf* *p* *f*

gradually press hard ord. pizz.

2'22" *f* 3 (metallic)

2'35" *f* 2'38"

Time 2'40" | 2'46"

Vln. 30 arco *mf* *mp* *p* *mf* *f*

2'43" *mf* 3

2'47" *mf* (gliss down)

Time 2'52" 2'57" 3'01"

Vln. 32

*sub. mp* *f* *ff* (let ring) *pizz* *f*

258' *mp* 305' *f*

(gliss down) *p* *f*

Time 3'07" 3'13" 3'19"

Vln. 35

*f* *f* *f* *arco* *p* *mp* *f* *sub. mf* *fp*

321' *f*



Time 325" | 331"

Vln. 38

*mp* *mf* *f*

327" *mp* *fp* 337" *p*

335" *sfz*

Time 338" | 343" | 350" | 356"

Vln. 40

*mp* *p* *mf* *f* *p* *mf* *p* *f* *f* *f*

346" *mf* (sharp pizzicatos)

2'40" *sfz* 3'43" *fp*

pizz. *f*

Time 4'00" 4'05" 4'09"

Vln. *mf* arco *sub. p* *mp* *p* *mf* *f* *ord.* *mp* *pp* *sul ponticello*

Time 4'14" 4'21" 4'25"

Vln. *p* *mf* *fp* *mf* *f* *p*

*pp* (noises) *p* *f* (gliss down) *mp*

4'19" 4'28"

Time 4'29" | 4'33"

Vln. 50

*mp* *mf* *f* *mf* *fp*

4'30"

*p* *p* *mf*

Time 4'38" | 4'42"

Vln. 52

*mf* *p* *mp* *mf* *f*

*pizz.* *arco* *pizz.* *arco*

(noises)

*sfz* <sup>\*</sup>

Time 4:47" | 4:52" | 4:56"

Vln. 54

4:48" 4:50" 4:59"

*mp* *f* *pp* *mp* *f*

*p* *f* *mf*

Time 5:03" | 5:09"

Vln. 57

*mf* *f* *mf* *f* *mp* *f*

*mf* *mp* *mf* *f*

Time 5'16" | 5'21"

Vln. 59

*pizz.* *arco*

*mp* *mf* *p* *f* *f* *pp*

*f* *p*

(gliss up to C) *mf* *p*

Time 5'27" | 5'31" | 5'35"

Vln. 61

*mf* *mp* *pp* *f* *mf* *f*

*ppp*

*f* (self-gliss pitch) *mp*

Time 5'39" | 5'43" | 5'47"

Vln. 64

*p* *mf* *mp* *ppp* *f* *mf* *f* *mf*

*mf* *pp* *p* *mp*

8

Time 5'51" | 5'56" | 6'00"

Vln. 67

*f* *f* *f* *sub. pp* *f* *p*

*mf* *ppp* *p* *mp* *mf*

8

*f*

Time 6'05" 6'10" 6'14" 6'18" 6'22"

Vln. 70

*mf* *f* *sub. p* *p* *f* *mp* *p*

*pizz.* *arco*

*f* *p* *f* *mp* *p*

*mf* *mp*

6'07" *p*

6'24" *mf*

Time 6'26" 6'31" 6'37"

Vln. 75

*mf* *f* *f* *mp* *mf* *f* *mf* *sub. p* *f*

*pizz.* *arco*

*mf* *mp* *mf* *f* *mf* *sub. p* *f*

*mf* *mp* *mf* *mp* *mf* *mp*

5'33" *mf*

*pizz.* *mf* *mp*

*mf* *p*

Time 6'43" | 6'49" | 6'55"

Vln. 78

Con sord. *mp* *mf*  $\leftarrow$  *f* *p* *mf*  $\leftarrow$  *f* *pp*  $\leftarrow$  *mp*  $\leftarrow$

gradually press hard

ord.

6'44" *mp*

pizz. *mf* arco

6'57" *f* *sfz* *mp*

Time 7'00" | 7'06" | 7'12" | 7'17"

Vln. 81

Senza sord. *niente* *mf* *sub. p*  $\leftarrow$  *mf* *mf* *mp*  $\leftarrow$  *f*  $\leftarrow$  *mp*

ord. .... press hard .... ord.

7'10" *mf*

7'13" *mf*

7'14" *mf* (*gliss up*)

7'04" *mf* *mp*



Time 7:22" 7:26" 7:31" 7:36"

Vln. 85

*f* *pp ppp* *mf* *p* *f*

*mf* *mf* *mf* *f*

(gliss up) 7:41"

Time 7:42" 7:48" 7:55"

Vln. 89 arco

*mp* *f* *p* *mf* *fp p* *f* *ppp* *mp* *f* *mp*

*mf* *f* *mf* *mf* *f* *f*

7:45" pizz. *mf* *f* *mf* *f* *f*

7:50" *mf* *f*

(gliss up) *f*

Time 8'02" 8'09" 8'13" 8'19"

Vln. 92

ord. .... press hard .... ord.

*mf* *f* *sfz sub. mp* *ppp* *mp* *f* *p*

8'07" *mf* *f*

8'11" *mf* 3 *p*

8'14" *p*

*mf*

Time 8'23" 8'27" 8'31" 8'36"

Vln. 96

*f* *mf* *mf* *f* *f* *mp* *f* *fff* *f* *mp* *mf* *p*

*pizz.* *arco* *non Vibrato*

8'30" *ff* *pizz.* 5 *mf* *p*

8'33" *mf* *p*

*mf* *f*

3 5

Time 8'41" | 8'47" | 8'53"

Vln. 100

*p* *mp* *mf* *mp*

*pp* *p* *mp* *p*

*p* *mf*

8'48" 8'57"

Time 8'58" | 9'04" | 9'10"

Vln. 103

*mf* *f* *mp* *mf* *f* *f* *sub. mp* *p* *ff* *sub. mp*

*mf* *fp* *mf* *p* *mf* *mf* *p*

*mf* *fp* *mf* *p*

*mf*

9'12"

Time 9'14" 9'18" 9'23"

Vln. 106

9'16" 9'27"

*f* *mp* *mf* *mp* *mf*

*pp* *mp* *mf* *mp*

*mp*

8va -

9'32"

*f* *mp* *mf* *mf*

*f*

Detailed description: This system of musical notation covers the time interval from 9'14" to 9'23". It features a Violin (Vln.) part and a Piano accompaniment. The Violin part begins at measure 106 with a forte (*f*) dynamic, followed by a mezzo-piano (*mp*) section with a triplet of eighth notes, and then a mezzo-forte (*mf*) section. The Piano part includes a piano (*pp*) section with a triplet of eighth notes, followed by a mezzo-piano (*mp*) section with a triplet of eighth notes, and then a mezzo-forte (*mf*) section. The time signature changes from 5/4 to 4/4. A dynamic marking of *mp* is also present in the piano part at 9'27". A *8va -* marking is visible above the piano part. The system concludes at 9'32" with a forte (*f*) dynamic in the piano part.

Time 9'27" 9'33"

Vln. 109

*f* *p* *mp* *f* *mf* *f*

*mp* *mf* *mf*

*f*

Detailed description: This system of musical notation covers the time interval from 9'27" to 9'33". It features a Violin (Vln.) part and a Piano accompaniment. The Violin part begins with a forte (*f*) dynamic, followed by a piano (*p*) section with a triplet of eighth notes, and then a mezzo-piano (*mp*) section. The Piano part includes a mezzo-piano (*mp*) section with a triplet of eighth notes, followed by a mezzo-forte (*mf*) section. The time signature changes from 4/4 to 5/4. A dynamic marking of *f* is present in the piano part at 9'32". The system concludes at 9'33" with a forte (*f*) dynamic in the piano part.

Time 9'38"

Vln. 111

*mp* *sub. f* *mf* *mp* *f*

*8<sup>va</sup>*

*mp*

9'41" *f* 5

9'44" *mp*

6/4

Time 9'45" | 9'51" | 9'56"

Vln. 112

*f* *ff* *mp* *mf* *f* *ff* *mf* *f*

*3* *gradually press hard* *ord.* *(let ring)*

*8<sup>va</sup>*

9'49" *mp* *3* *mp*

10/4

Time 10'00" 10'10" 10'20"

Vln. 115

10/4 8/4 6/4

pizz. *mf*

Time 10'18" 10'24" 10'29"

Vln. 117

6/4 5/4 6/4

*mf* *p* *mf*

Time 10'34" 10'40" 10'48"

Vln. 120

6/4 8/4 12/4 8/4

*sfz*

Time 11'00" 11'08" 11'15" 11'22"

Vln. 123

8/4 7/4 8/4 6/4

*mf*

(white noise)

(white noise)

\*\*\*\*\*

Time (11'30<sup>u</sup>)

♩ = ca. 60  
tempo ad lib.

[127] (\* square notehead: left hand tap on fingerboard)

Vln. *sfz pp* *ff* *sfz pp* *ff* *ric. ....ord.* *mp* *f* *gradually press hard*

[130] *ord.* 5 *f* *sub. p* *ff* *f* *mp* *ff* *ord.* *mp* *f* *sul ponticello*

[132] *sub. p* 3 *mf* 7:4 *f* *ff* *mp* *mf* *sub. p* *ff* *gradually press hard* 3:2 5

[134] *ord.* *f* *wide vibrato* *ord.* 3 *mp* *f* *ric. ....ord.* *mf* *sub. p* *ord.*

[137] 3 *f* *sfz sub. pp* *sfz sub. p* *f* 3 3

[140] *sul tasto* *ric. ....ord.* *f* *sfz pp* *f* *pizz. (quick gliss down)* *f* *arco approx. pitch* *mp* 9:8 5 *fp*



Vln. 142

*ff* *mf* *mp* *mf* *p* *mf*

Vln. 143

*f* *mp* *ff* *ff* *ff* *fp* *ff*

Vln. 145

*f* *mp* *mf* *f* *mp*

Time Ver. [A] 13'12" | 13'17" | 13'24" | 13'27"  
 Ver. [B] 0'00" | 0'05" | 0'12" | 0'15"

Vln. 147

*sfz sub. p* *fp* *mp* *mf* *f* *mp* *f* *mp*

*mp* *mf* *mf* *p*

Time 13'32" 0'20" | 13'38" 0'26" | 13'42" 0'30"

Vln. 151

*fp* *f* *sub. mp* niente

*mf* *f* *mp* *f*

(metallic) *f*

Time 13'46" 0'34" | 13'53" 0'41"

Vln. 154

*fp* *fp* *mp* *mf* *f*

gradually wide vibrato

*f* *mp* *mp* *f*

Time 13'58" 0'46" 14'05" 0'53"

Vln. *ric. ...ord.* *ric. ...ord.* *sul ponticello* *ord.*

*ff* *ff* *f* *ff* *sfz* *mp* *p* *f*

14'01" 0'49" 14'06" 0'54" 14'08" 0'56"

*mf* *pizz* *mp* *mf*

*mf*

Time 14'13" 1'01" 14'19" 1'07" 14'26" 1'14"

Vln. *sul tasto* *ord.* *ord. .... sul ponticello*

*mp* *mp* *mp* *mf* *f* *ff* *pp*

*mf* *p* *mf* *p* *mp* *fp*

Time 14:30" 1:18" | 14:34" 1:22" | 14:37" 1:25" |

Vln. 161 pizz. *mf* *f* arco ord. *f* *mp* *mf* *pp* wide vibrato

14:35" 1:23" 14:41" 1:29"

*f* *mf* *mp* *f* *mp*

Time 14:43" 1:31" | 14:47" 1:35" | 14:52" 1:40" |

Vln. 164 *mp* *mf* *f* *p* (behind bridge) sul E *ff*

14:50" 1:38" (birds-like) *mp*

Time 14:57" 1:45" | 15:02" 1:50"

Vln. 167 pizz. arco

*mf* *f* *sub. mp* *f* *sub. p* *mf* *f*

*mp* *fp*

*mf* *mf* *fp*

15:07" 1:55" 3

Time 15:08" 1:56" | 15:13" 2:01" | 15:17" 2:05"

Vln. 169 pizz. arco

*f* *mf* *fp* *f* *mf* *f* *sub. p*

*mp* *p* *mp* *f*

*mp*

Time 15:23" 2:11" 15:30" 2:18"

Vln. 172

*f* *p* *p* *f* niente *mf*

15:25" 2:13" *mp*

15:29" 2:17" *mf* *p* *f*

*mf*

Time 15:34" 2:22" 15:39" 2:27" 15:43" 2:31"

Vln. 174

wide vibrato *mp* *mf* *p* gradually wide vibrato *mf* ord. *mp* *mf* niente <

15:35" 2:23" *mf* 3 3 *f* *mp*

15:42" 2:30" *f* 3 3

15:46" 2:34" *mf*

Time 15'49" 2'37" 15'55" 2'43"

Vln. 177 ord. .... sul tasto pizz. arco ord. 3

*f* *mp* *mf*

15'53" 2'31" *mf* 5

15'57" 2'45" *mp*

Time 16'02" 2'50" 16'07" 2'55" 16'13" 3'01"

Vln. 179 gradually press hard ord. 6

*p* *mf* *ff* *sub. p* *ppp* *f* *mp* *f*

pizz. 3 3 *mf* *f* *mp*

*sfz* *fp*

Time 16'20" 3'08" 16'24" 3'12" 16'31" 3'19" 16'36" 3'24"

Vln. 182

*mf* *f* *fp* *f* *mf*

*fp* *fp* *fp*

*p*

*fp*

16'35" 3'23"

Time 16'40" 3'28" 16'45" 3'33" 16'51" 3'39"

Vln. 186

*p* *f* *f* *sub. mp* *p* *fp*

*mp* *fp* *mf* *p* *f*

(gliss up)

16'50" 3'38"



Time 16'56" 3'44" 17'01" 3'49" 17'06" 3'54"

Vln. 189

ord. .... sul ponticello

ord. .... sul ponticello

ord.

*ff* *mf* *f* *sfz sub. p* *ff* *f*

17'09" 3'57" pizz. *f*

Time 17'11" 3'59" 17'16" 4'04" 17'21" 4'09"

Vln. 192

approx. pitch

wide vibrato (Eb)

*fp* *ff* *mf* *sub. pp*

*p* *f* *mp*

17'19" 4'07" *mf* *mp* *fp*

Time 17'26" 4'14" | 17'31" 4'19"

Vln. 195

wide vibrato (Ab) press hard .... ord.

*ff* *fp* *ff* *sub. mp* *sfz* *mp* *f* *f* niente

Time 17'36" 4'24" | 17'41" 4'29" | 17'46" 4'34"

Vln. 197

sul E (let ring)

*ff* *mp* *mf* *f* *ff* *mf* *p* *ff*

17'44" 4'32"

*f* *mf* *mp*

*f* *mf*

Time 17'52" 4'40" | 17'57" 4'45"

200

Vln. *sub. mp* *p* *mf* *fp* *ff*

ord. .... sul ponticello

Time 18'03" 4'51" | 18'09" 4'57" | 18'14" 5'02"

202

Vln. Ricochet *ff* *mf* *sfz sub. p* *f* *ff*

ord.

Time 18'17" 5'05" 18'23" 5'11" 18'29" 5'17" 18'35" 5'23"

Vln. 205 wide vibrato non vibrato (let ring)

*pp* *f* *ff*

*mf* *f* *mf* *mp* *p* *p* *mf*

18'32" 5'20"

*ff* *mf* *p* *mf*

Time 18'42" 5'30" 18'47" 5'35"

Vln. 209 \* Change to detuned violin.

*mf* *mp* *mf* *8va*

18'50" 5'38"

Time 18'53" 5'41" 19'00" 5'48" 19'05" 5'53"

211

Vln.

*pp* *fp* *f* *f* *pizz.* *f* *arco* *sub. p* *f* *f*

*mf* *ff* *mp* *mp* *mf* *pp* *mf* *mf*

19'02" 5'50"

*mp* *mp*

Time 19'11" 5'59" 19'15" 6'03" 19'19" 6'07" 19'24" 6'12"

214

Vln.

*ff* *mp* *f* *f* *sfz* *sub. mp*

*mf* *fp*

Time 19'28" 6'16" 19'35" 6'23" 19'40" 6'28"

218

sul tasto ..... ponticello ord.

ric. ...ord.

3 gradually press hard

Vln. *f* *sub. p* *f* *mf* *ff*

*p* *p* *mp*

*fp fp fp* *f*

Time 19'44" 6'32" 19'48" 6'36" 19'52" 6'40" 19'57" 6'45"

221

ord.

3 (gliss up after trill)

(highest pitch) (let ring)

Ricochet ord.

*f* *fff* *ff* (Roll from string I and II to III and IV.)

*mf*

*mp* *f*

Time 19'58" 6'46" 20'03" 6'51" 20'09" 6'57"

224

*ric. ....ord.*

*wide vibrato*

*pitch ad lib.*

*mf* *f* *p* *ff* *fp* *(ppp)* *mf* *ff* *sfz sub. p*

Vln.

Time 20'14" 7'02" 20'19" 7'07" 20'24" 7'12" 20'29" 7'17"

227

*p* *mf sub. p* *p* *ff* *mf* *mp* *ff*

Vln.

*(let ring)*