

# Lawrence Berkeley National Laboratory

## Biological Systems & Engineering

### Title

Correction: Lenarczyk et al. T Cells Contribute to Pathological Responses in the Non-Targeted Rat Heart following Irradiation of the Kidneys. *Toxics* 2022, 10, 797

### Permalink

<https://escholarship.org/uc/item/2c3738jm>

### Journal

*Toxics*, 11(2)

### ISSN

2305-6304

### Authors

Lenarczyk, Marek  
Alsheikh, Ammar J  
Cohen, Eric P  
[et al.](#)

### Publication Date

2023

### DOI

10.3390/toxics11020183




### Copyright Information

This work is made available under the terms of a Creative Commons Attribution License, available at <https://creativecommons.org/licenses/by/4.0/>

Peer reviewed

Correction

# Correction: Lenarczyk et al. T Cells Contribute to Pathological Responses in the Non-Targeted Rat Heart following Irradiation of the Kidneys. *Toxics* 2022, 10, 797

Marek Lenarczyk <sup>1</sup>, Ammar J. Alsheikh <sup>2</sup> , Eric P. Cohen <sup>3</sup>, Dörthe Schaeue <sup>4</sup> , Amy Kronenberg <sup>5</sup>, Aron Geurts <sup>2</sup>, Slade Klawikowski <sup>6</sup>, David Mattson <sup>7</sup> and John E. Baker <sup>1,\*</sup> 

<sup>1</sup> Radiation Biosciences, Medical College of Wisconsin, Milwaukee, WI 53226, USA

<sup>2</sup> Department of Physiology, Medical College of Wisconsin, Milwaukee, WI 53226, USA

<sup>3</sup> Department of Medicine, Division of Nephrology, New York University, New York, NY 10016, USA

<sup>4</sup> Department of Radiation Oncology, University of California at Los Angeles, Los Angeles, CA 90095, USA

<sup>5</sup> Biological Systems and Engineering, Lawrence Berkeley National Laboratory, Berkeley, CA 94720, USA

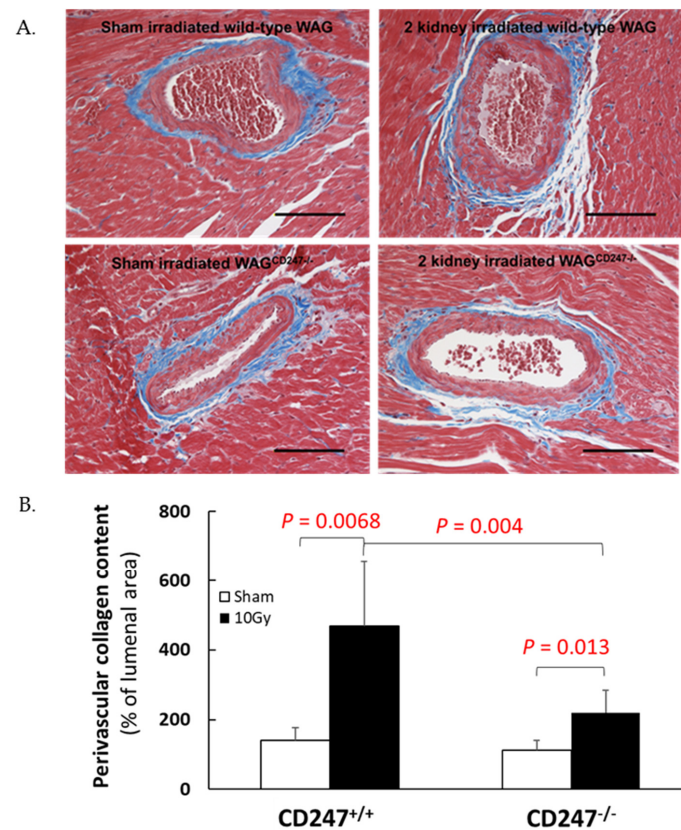
<sup>6</sup> Department of Radiation Oncology, Medical College of Wisconsin, Milwaukee, WI 53226, USA

<sup>7</sup> Department of Physiology, Medical College of Georgia, Augusta, GA 30912, USA

\* Correspondence: j baker@mcw.edu; Tel.: +1-414-955-8706

## 1. Error in Figure

In the original publication [1], there was a mistake in Figure 6 as published. “Cardiac fibrosis” should not be shown in Figure 6B. The corrected Figure 6 appears below.



**Figure 6.** Collagen deposition in heart after local irradiation of kidneys with 10 Gy of X-rays in wild-type and WAG<sup>CD247<sup>-/-</sup></sup> rats. (A) Trichrome staining of heart. The horizontal scale bar represents 100 microns. Images are representative data from 3–4 animals per group. (B). Quantification of perivascular cardiac collagen content in hearts of wild type and WAG<sup>CD247<sup>-/-</sup></sup> rats 120 days after the start of the study. Data are mean + SD, n = 6/group.



**Citation:** Lenarczyk, M.; Alsheikh, A.J.; Cohen, E.P.; Schaeue, D.; Kronenberg, A.; Geurts, A.; Klawikowski, S.; Mattson, D.; Baker, J.E. Correction: Lenarczyk et al. T Cells Contribute to Pathological Responses in the Non-Targeted Rat Heart following Irradiation of the Kidneys. *Toxics* 2022, 10, 797. *Toxics* 2023, 11, 183. <https://doi.org/10.3390/toxics11020183>

Received: 9 February 2023

Accepted: 9 February 2023

Published: 16 February 2023



**Copyright:** © 2023 by the authors. Licensee MDPI, Basel, Switzerland. This article is an open access article distributed under the terms and conditions of the Creative Commons Attribution (CC BY) license (<https://creativecommons.org/licenses/by/4.0/>).

## 2. Figure Legend

In the original publication, there was a mistake in the legend for Figure 7. A part of the text is missing at the beginning of the legend in Figure 7. The correct legend appears below.

**Figure 7.** Immune cells in cortex and medulla of kidney 40 days after local irradiation with 10 Gy of X-rays in A. wild-type WAG and B. WAG<sup>CD247<sup>-/-</sup></sup> rats. T cells (CD3<sup>+</sup>), natural killer cells (CD56<sup>+</sup>), macrophages (CD68<sup>+</sup>) and B cells (CD20<sup>+</sup>) appear as brown color. The horizontal scale bar represents 100 microns. Images are representative data from 3–4 animals per group. Quantification of immune cells in kidney. Data are mean + SEM.

The authors state that the scientific conclusions are unaffected. This correction was approved by the Academic Editor. The original publication has also been updated.

## Reference

1. Lenarczyk, M.; Alsheikh, A.J.; Cohen, E.P.; Schaue, D.; Kronenberg, A.; Geurts, A.; Klawikowski, S.; Mattson, D.; Baker, J.E. T Cells Contribute to Pathological Responses in the Non-Targeted Rat Heart Following Irradiation of the Kidneys. *Toxics* **2022**, *10*, 797. [[CrossRef](#)]

**Disclaimer/Publisher's Note:** The statements, opinions and data contained in all publications are solely those of the individual author(s) and contributor(s) and not of MDPI and/or the editor(s). MDPI and/or the editor(s) disclaim responsibility for any injury to people or property resulting from any ideas, methods, instructions or products referred to in the content.