

UC Davis

UC Davis Previously Published Works

Title

CYP19A1 fine-mapping and Mendelian randomization: estradiol is causal for endometrial cancer

Permalink

<https://escholarship.org/uc/item/2ck1c77q>

Journal

Endocrine Related Cancer, 23(2)

ISSN

1351-0088

Authors

Thompson, Deborah J
O'Mara, Tracy A
Glubb, Dylan M
et al.

Publication Date

2016-02-01

DOI

10.1530/erc-15-0386

Copyright Information

This work is made available under the terms of a Creative Commons Attribution License, available at <https://creativecommons.org/licenses/by/4.0/>

Peer reviewed

CYP19A1 fine-mapping and Mendelian randomization: estradiol is causal for endometrial cancer

Deborah J Thompson¹, Tracy A O'Mara², Dylan M Glubb², Jodie N Painter², Timothy Cheng³, Elizabeth Folkler⁴, Deborah Doody⁴, Joe Dennis¹, Penelope M Webb², for the Australian National Endometrial Cancer Study Group (ANECs)², Maggie Gorman³, Lynn Martin³, Shirley Hodgson⁵, for the National Study of Endometrial Cancer Genetics Group (NSECG)³, Kyriaki Michailidou¹, Jonathan P Tyrer⁶, Mel J Maranian⁶, Per Hall⁷, Kamila Czene⁷, Hatf Darabi⁷, Jingmei Li⁷, Peter A Fasching^{8,9}, Alexander Hein⁹, Matthias W Beckmann⁹, Arif B Ekici¹⁰, Thilo Dörk¹¹, Peter Hillemanns¹², Matthias Dürst¹³, Ingo Runnebaum¹³, Hui Zhao^{14,15}, Jeroen Depreeuw^{14,15,16}, Stefanie Schrauwen¹⁶, Frederic Amant¹⁶, Ellen L Goode¹⁷, Brooke L Fridley¹⁸, Sean C Dowdy¹⁹, Stacey J Winham¹⁷, Helga B Salvesen^{20,21}, Jone Trovik^{20,21}, Tormund S Njolstad^{20,21}, Henrica M J Werner^{20,21}, Katie Ashton^{22,23,24}, Tony Proietto²⁵, Geoffrey Otton²⁵, Luis Carvajal-Carmona^{26,27}, Emma Tham²⁸, Tao Liu²⁸, Miriam Mints^{28,29}, for RENOCAS²⁸, Rodney J Scott^{22,23,24,30}, Mark McEvoy³¹, John Attia^{22,31}, Elizabeth G Holliday^{22,31}, Grant W Montgomery², Nicholas G Martin², Dale R Nyholt^{2,32}, Anjali K Henders², John L Hopper³³, Nadia Traficante³⁴, for the AOCS Group², Matthias Ruebner⁹, Anthony J Swerdlow^{35,36}, Barbara Burwinkel^{37,38}, Hermann Brenner^{39,40,41}, Alfons Meindl⁴², Hiltrud Brauch^{41,43,44}, Annika Lindblom²⁸, Diether Lambrechts^{14,15}, Jenny Chang-Claude³⁸, Fergus J Couch^{17,45}, Graham G Giles^{33,46,47}, Vessela N Kristensen^{48,49,50}, Angela Cox⁵¹, Manjeet K Bolla¹, Qin Wang¹, Stig E Bojesen^{52,53}, Mitul Shah⁶, Robert Luben⁵⁴, Kay-Tee Khaw⁵⁵, Paul D P Pharoah⁶, Alison M Dunning⁶, Ian Tomlinson³, Mitch Dowsett⁴, Douglas F Easton^{1,6} and Amanda B Spurdle²

¹Department of Public Health and Primary Care, Centre for Cancer Genetic Epidemiology, University of Cambridge, Strangeways Research Laboratory, Worts Causeway, Cambridge, Cambridge CB1 8RN, UK

²Department of Genetics and Computational Biology, QIMR Berghofer Medical Research Institute, Brisbane, Queensland, 4006, Australia

³Wellcome Trust Centre for Human Genetics, University of Oxford, Oxford OX3 7BN, UK

⁴Academic Department of Biochemistry, Royal Marsden Hospital, London SW3 6JJ, UK

⁵Department of Clinical Genetics, St George's Hospital Medical School, London SW17 0RE, UK

⁶Department of Oncology, Centre for Cancer Genetic Epidemiology, University of Cambridge, Cambridge CB1 8RN, UK

⁷Department of Medical Epidemiology and Biostatistics, Karolinska Institutet, Stockholm SE-171 77, Sweden

⁸Department of Medicine, Division of Hematology/Oncology, David Geffen School of Medicine, University of California at Los Angeles, Los Angeles, California 90095, USA

⁹Department of Gynecology and Obstetrics, University Hospital Erlangen, Friedrich-Alexander-University Erlangen-Nuremberg, Erlangen 91054, Germany

¹⁰Institute of Human Genetics, University Hospital Erlangen, Friedrich-Alexander-University Erlangen-Nuremberg, Erlangen 91054, Germany

¹¹Gynaecology Research Unit, Hannover Medical School, Hannover 30625, Germany

¹²Clinics of Gynaecology and Obstetrics, Hannover Medical School, Hannover 30625, Germany

¹³Department of Gynaecology, Jena University Hospital – Friedrich Schiller University, Jena 07743, Germany

¹⁴Vesalius Research Center, Leuven 3000, Belgium

¹⁵Laboratory for Translational Genetics, Department of Oncology, University Hospitals Leuven, Leuven 3000, Belgium

- ¹⁶Department of Obstetrics and Gynecology, Division of Gynecologic Oncology, University Hospitals, KU Leuven – University of Leuven, Leuven 3000, Belgium
- ¹⁷Department of Health Sciences Research, Mayo Clinic, Rochester, Minnesota 55905, USA
- ¹⁸Department of Biostatistics, University of Kansas Medical Center, Kansas City, Kansas 66160, USA
- ¹⁹Department of Obstetrics and Gynecology, Division of Gynecologic Oncology, Mayo Clinic, Rochester, Minnesota 55905, USA
- ²⁰Centre for Cancerbiomarkers, Department of Clinical Science, The University of Bergen, Bergen 5020, Norway
- ²¹Department of Obstetrics and Gynecology, Haukeland University Hospital, Bergen 5021, Norway
- ²²Hunter Medical Research Institute, John Hunter Hospital, Newcastle, New South Wales 2305, Australia
- ²³Centre for Information Based Medicine, University of Newcastle, Newcastle, New South Wales 2308, Australia
- ²⁴School of Biomedical Sciences and Pharmacy, University of Newcastle, Newcastle, New South Wales 2308, Australia
- ²⁵School of Medicine and Public Health, University of Newcastle, Newcastle, New South Wales 2308, Australia
- ²⁶Grupo de investigación Citogenética, Filogenia y Evolución de Poblaciones, Universidad del Tolima, Ibagué, Tolima, Colombia
- ²⁷Genome Center and Department of Biochemistry and Molecular Medicine, University of California, Davis, California 95616, USA
- ²⁸Department of Molecular Medicine and Surgery, Karolinska Institutet, Stockholm SE-171 77, Sweden
- ²⁹Department of Women's and Children's Health, Karolinska Institutet, Karolinska University Hospital, Stockholm SE-171 77, Sweden
- ³⁰Hunter Area Pathology Service, John Hunter Hospital, Newcastle, New South Wales 2305, Australia
- ³¹Centre for Clinical Epidemiology and Biostatistics, School of Medicine and Public Health, University of Newcastle, New South Wales 2305, Australia
- ³²Institute of Health and Biomedical Innovation, Queensland University of Technology, Brisbane 4006, Australia
- ³³Centre for Epidemiology and Biostatistics, Melbourne School of Population and Global Health, The University of Melbourne, Melbourne, Victoria 3010, Australia
- ³⁴Peter MacCallum Cancer Center, The University of Melbourne, Melbourne 3002, Australia
- ³⁵Division of Genetics and Epidemiology, Institute of Cancer Research, London SM2 5NG, UK
- ³⁶Division of Breast Cancer Research, Institute of Cancer Research, London SM2 5NG, UK
- ³⁷Department of Gynecology and Obstetrics, Molecular Biology of Breast Cancer, University of Heidelberg, Heidelberg 69117, Germany
- ³⁸Division of Cancer Epidemiology, German Cancer Research Center, Heidelberg 69120, Germany
- ³⁹Division of Clinical Epidemiology and Aging Research, German Cancer Research Center (DKFZ), Heidelberg 69120, Germany
- ⁴⁰Division of Preventive Oncology, German Cancer Research Center (DKFZ), Heidelberg 69120, Germany
- ⁴¹German Cancer Consortium (DKTK) and German Cancer Research Center (DKFZ), Heidelberg 69120, Germany
- ⁴²Department of Obstetrics and Gynecology, Division of Tumor Genetics, Technical University of Munich, Munich 80333, Germany
- ⁴³Dr Margarete Fischer-Bosch-Institute of Clinical Pharmacology, Stuttgart 70376, Germany
- ⁴⁴University of Tübingen, Tübingen 72074, Germany
- ⁴⁵Department of Laboratory Medicine and Pathology, Mayo Clinic, Rochester, Minnesota 55905, USA
- ⁴⁶Cancer Epidemiology Centre, Cancer Council Victoria, Melbourne, Victoria 3004, Australia
- ⁴⁷Department of Epidemiology and Preventive Medicine, Monash University, Melbourne, Victoria, 3004, Australia
- ⁴⁸Department of Genetics, Institute for Cancer Research, The Norwegian Radium Hospital, Oslo 0310, Norway
- ⁴⁹The K.G. Jebsen Center for Breast Cancer Research, Institute for Clinical Medicine, Faculty of Medicine, University of Oslo, Oslo 0316, Norway
- ⁵⁰Department of Clinical Molecular Oncology, Division of Medicine, Akershus University Hospital, Lørenskog 1478, Norway
- ⁵¹Department of Oncology, Sheffield Cancer Research, University of Sheffield, Sheffield S10 2TN, UK
- ⁵²Faculty of Health and Medical Sciences, University of Copenhagen, Copenhagen 1165, Denmark
- ⁵³Department of Clinical Biochemistry, Herlev Hospital, Copenhagen University Hospital, Herlev 2730, Denmark
- ⁵⁴Department of Public Health and Primary Care, University of Cambridge, Cambridge CB1 8RN, UK
- ⁵⁵MRC Centre for Nutritional Epidemiology in Cancer Prevention and Survival (CNC), University of Cambridge, Cambridge CB1 8RN, UK

Correspondence
should be addressed
to D J Thompson
Email
djt25@medschl.cam.ac.uk

Abstract

Candidate gene studies have reported *CYP19A1* variants to be associated with endometrial cancer and with estradiol (E_2) concentrations. We analyzed 2937 single nucleotide polymorphisms (SNPs) in 6608 endometrial cancer cases and 37 925 controls and report the first genome wide-significant association between endometrial cancer and a *CYP19A1* SNP (rs727479 in intron 2, $P=4.8 \times 10^{-11}$). SNP rs727479 was also among those most strongly associated with circulating E_2 concentrations in 2767 post-menopausal controls ($P=7.4 \times 10^{-8}$). The observed endometrial cancer odds ratio per rs727479 A-allele (1.15, CI = 1.11–1.21) is compatible with that predicted by the observed effect on E_2 concentrations (1.09, CI = 1.03–1.21), consistent with the hypothesis that endometrial cancer risk is driven by E_2 . From 28 candidate-causal SNPs, 12 co-located with three putative gene-regulatory elements and their risk alleles associated with higher *CYP19A1* expression in bioinformatical analyses. For both phenotypes, the associations with rs727479 were stronger among women with a higher BMI ($P_{\text{interaction}}=0.034$ and 0.066 respectively), suggesting a biologically plausible gene-environment interaction.

Key Words

- ▶ endometrial cancer
- ▶ CYP19A1
- ▶ estradiol

Endocrine-Related Cancer
(2016) 23, 77–91

Introduction

Established risk factors for endometrial cancer include high BMI (IARC 2002), early menarche, late menopause, nulliparity, estrogen-only hormone replacement therapy (HRT) (Beral *et al.* 2005) and tamoxifen use (Cuzick *et al.* 2003), while cigarette smoking and the use of oral contraceptives or combined HRT (Beral *et al.* 2005) are associated with lower risks. It has been hypothesized that these factors alter endometrial cancer risk by increasing exposure to estrogens (Key & Pike 1988); indeed, higher concentrations of circulating estradiol (E_2) in post-menopausal women have been associated with an increased risk of endometrial cancer (Zeleniuch-Jacquotte *et al.* 2001, Lukanova *et al.* 2004, Allen *et al.* 2008).

After the cessation of ovarian estrogen production at menopause, endogenous estrogens are primarily synthesized from testosterone (T) in adipose tissue via aromatase, encoded by *CYP19A1*. Candidate gene studies have found levels of E_2 in pre-menopausal and post-menopausal women, and also in men, to be associated with genetic variants within or close to *CYP19A1* (Dunning *et al.* 2004, Paynter *et al.* 2005, Haiman *et al.* 2007, Ahn *et al.* 2009, Eriksson *et al.* 2009, Kidokoro *et al.* 2009, Travis *et al.* 2009, Beckmann *et al.* 2011, Lundin *et al.* 2012, Prescott *et al.* 2012, Flote *et al.* 2014). Candidate studies have also identified associations between several different *CYP19A1* variants and endometrial cancer (Paynter *et al.* 2005, Tao *et al.* 2007, Setiawan *et al.* 2009, Low *et al.* 2010), with some evidence of stronger associations in women with higher BMI (Setiawan *et al.* 2009).

None of the published studies have attempted a systematic assessment of all common *CYP19A1* variants in order to determine i) which are most likely to be causal for endometrial cancer and/or E_2 concentration, ii) whether multiple independent causal variants exist at this locus for either trait, and iii) whether the same variant or variants are responsible for both traits. The latter would help to address the question as to whether the reported association between E_2 and endometrial cancer seen in epidemiological studies is causal or a consequence of confounding (Fig. 1). If the association is causal, then variants causally associated with E_2 levels should also be associated with endometrial cancer, with a magnitude that can be predicted using a Mendelian randomization methodology (C-Reactive Protein Coronary Heart Disease

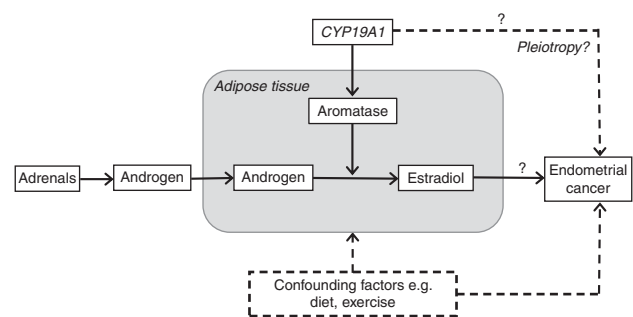


Figure 1

Factors potentially involved in the reported association between circulating post-menopausal E_2 and endometrial cancer risk. Question marks highlight the issues to be addressed in this study.

Genetics Collaboration *et al.* 2011, Interleukin-6 Receptor Mendelian Randomisation Analysis Consortium 2012), a form of instrumental variable analysis in which the instrument is a genetic variant(s) known to be associated with the biomarker in a particular direction.

To address the question of whether the same *CYP19A1* variant(s) are associated with E_2 levels and endometrial cancer with compatible effect sizes and directions, we used genotype information for 2937 single nucleotide polymorphisms (SNPs) across a 1.2 Mb region encompassing *CYP19A1* in 6608 endometrial cancer cases and 37 925 controls of European ancestry, 1733 of whom (all controls) were post-menopausal and had measured E_2 and T concentrations.

Materials and methods

Endometrial cancer case-control studies

The association between SNPs at the *CYP19A1* locus and endometrial cancer was tested using data from four separate case-control studies:

The ANECS, SEARCH, and NSECG genomewide association studies The results presented here are based on the ANECS, SEARCH, and NSECG genomewide association studies (GWAS) and country-matched datasets (McGregor *et al.* 1999, WTCCC 2007, Houlston *et al.* 2010, McEvoy *et al.* 2010, Painter *et al.* 2011, Spurdle *et al.* 2011), as shown in Supplementary Table 1A and B, see section on supplementary data given at the end of this article, and described in detail in (Painter *et al.* 2015). All cases and controls were of European ancestry.

The ECAC iCOGS study The fourth dataset comprised 4402 women of European ancestry with a confirmed diagnosis of endometrial cancer (3535 with confirmed endometrioid histology), recruited via 11 separate studies in seven countries in the Endometrial Cancer Association Consortium (ECAC; Painter *et al.* 2015) and 28 758 healthy female controls from the same countries, all participating in the Breast Cancer Association Consortium (BCAC; Michailidou *et al.* 2013) or the Ovarian Cancer Association Consortium (OCAC; Pharoah *et al.* 2013), plus 282 Norwegian blood donor controls (see Supplementary Information, Supplementary Table 1A and B, see section on supplementary data given at the end of this article). Cases and controls were genotyped for 211 155 SNPs using a custom Illumina Infinium iSelect array ('iCOGS'; Michailidou *et al.* 2013, Pharoah *et al.* 2013, Painter *et al.* 2015) designed by the Collaborative Oncological

Gene-environment Study ('COGS'). The iCOGS array includes 134 SNPs located within the ~1.2 Mb region of chromosome 15 between 50 899 000–52 095 000 surrounding *CYP19A1*, 22 of which had been specifically selected for the study of post-menopausal E_2 levels.

Post-genotyping quality control for all four studies was as described in (Spurdle *et al.* 2011) and (Painter *et al.* 2015). Individuals with <85% estimated European ancestry based on Identity-By-State (IBS) scores between study individuals and individuals in HapMap (<http://hapmap.ncbi.nlm.nih.gov/>) were excluded.

E_2 datasets

The EPIC Norfolk study Sex-hormone levels, including E_2 and T concentrations, were measured on subsets of the ~25 000 participants in the European Prospective Investigation of Cancer-Norfolk cohort study (see Day *et al.* (1999) for details). After recruitment, participants were invited to attend a first health check (HC1), at which a blood sample was taken. A second blood sample was taken from participants who attended the second health check (HC2), ~3 years after the first. For each set of blood samples, a subset were randomly selected for hormone level measurement from among the women who were considered to be post-menopausal based on being >55 years, not having menstruated in the last year, and having not taken HRT for at least 3 months before sampling (Supplementary Table 1C, see section on supplementary data given at the end of this article). The plasma and serum samples collected from these women had been stored at -70°C until analysis, and their whole blood samples had been stored at -30°C before DNA extraction. 2368 of the women for whom hormone levels had been measured had also been genotyped using the iCOGS array as BCAC control subjects (and thus were also controls in our iCOGS endometrial cancer analysis). Of these, 1333 women had hormones measured from their HC1 blood sample and 1536 from their HC2 sample, of whom 501 had hormones measured from both samples. Where two measurements existed, we chose the measurement from HC2, when women would be further from the menopause. After excluding women within 2 years of the menopause at blood draw or with missing E_2 levels or E_2 values >300 pmol/l (i.e., outside the possible range for a post-menopausal woman) our analysis was based on 1500 genotyped women with HC2 E_2 levels and 425 women with HC1 levels. Of the HC2 women, 1431 also had a valid T measurement (T was not measured as part of HC1).

Ethical approval was obtained from the Norwich Local Research Ethics Committee, LREC 98CN01. All study participants provided written informed consent.

The SIBS study Participants in the Sisters in Breast Screening study (SIBS) were identified through the National Health Service breast screening program in the UK (Prescott *et al.* 2012). A subset of 905 SIBS women who were aged over 55 years at recruitment, 2 or more years since their last menstrual period, and not currently using HRT at the time of blood collection were selected for hormone measurement (Prescott *et al.* 2012). After excluding women with missing or extreme E₂ levels (as above), 889 women were left, of whom 302 had been genotyped using the iCOGS array as BCAC control subjects (after quality control exclusions), and thus were also controls in our iCOGS endometrial cancer analysis (Supplementary Table 1C, see section on supplementary data given at the end of this article). All participants gave informed written consent. This study was approved by the Eastern Multicentre Research Ethics Committee (SIBS).

For the EPIC and SIBS studies, plasma E₂ concentrations were measured at The Royal Marsden Hospital (London, UK), using an in-house RIA using a highly specific rabbit antiserum which had been raised against an E₂-6-carboxymethyloxime-BSA conjugate and E₂-6-carboxymethyloxime-[2⁻¹²⁵I] iodohistamine (Dowsett *et al.* 1987). The detection limit was 3 pmol/l and values were replaced with this limit when they were reported as being undetectable. For the SIBS study, at a concentration of 25 pmol/l the within assay variation was 6.5% and the between assay variation was 16% (*n*=18). For the EPIC studies, at a concentration of 18 pmol/l the within assay and the between-batch coefficients of variation (CV) were 8.6 and 13% respectively.

Testosterone was measured in the EPIC and SIBS studies using a solid-phase RIA kit (Diagnostic Products, Gwynedd, UK), with within- and between-batch CV at a concentration of 3.1 nmol/l of 6.1 and 10% respectively and with a detection limit of 0.14 nmol/l.

Additional SIBS replication set To increase statistical power we genotyped all of the 889 SIBS women with E₂ measurements (described above) for rs727479 using a Custom Taqman Assay (Life Technologies, ThermoFisher Scientific, Waltham, MA, USA) according to manufacturer's instructions (details provided in Supplementary Table 5, see section on supplementary data given at the end of this article). After quality control exclusions described below, 813 women had measured E₂ measurements and genotypes

for rs727479, of whom 264 also had valid iCOGS genotyping i.e., 549 additional samples.

Regional imputation

We used IMPUTEv2 (Howie *et al.* 2009) to impute genotypes for SNPs in the 50 899 000–52 095 000 region of chromosome 15 in the 1000 Genomes dataset v3 (April 2012 release). We allowed the IMPUTE Software to select the most appropriate haplotypes from among the complete set of 1000 Genomes haplotypes (Howie *et al.* 2011). Imputation was conducted separately for the four datasets, and SNPs with imputation information score <0.7 and/or MAF <0.01 in any of the four studies were excluded.

Statistical analysis

The four imputed endometrial cancer datasets were analyzed separately using unconditional logistic regression with a per-allele (1 degree of freedom) model using SNPTEST v2 (Ferreira & Marchini 2011). For the iCOGS dataset, analyses were performed adjusting for country and for the first ten principal components, as in (Painter *et al.* 2015). The GWAS datasets were each analyzed as a single stratum, with adjustment for the first two (ANECs and NSECG) and three (SEARCH) principal components. Our ongoing genome-wide analyses have shown that the inclusion of these principal components is sufficient to control for population stratification (genomic control $\lambda=1.002-1.038$).

The endometrial cancer odds ratios (OR) for the four studies were combined using standard fixed-effects meta-analyses. The *I*² statistic (Higgins & Thompson 2002) was used to estimate the proportion of the variance due to between-study heterogeneity. SNPs with significant between-study heterogeneity (*P*<0.05) were excluded. Analyses for all SNPs were repeated adjusting for the most significant SNP to assess whether multiple independent causal variants were present. A statistical significance cut-off of *P* ≤ 10⁻⁴ was used for secondary and conditional analyses. To determine the most likely candidate causative SNPs, the log likelihoods of all tested SNPs were compared with that of the top SNP. SNPs with log-likelihood ratios of <1:100 of being the top SNP and which were correlated with the top SNP (linkage disequilibrium (LD) *r*²>0.2) were prioritized as potentially causal variants for follow-up in bioinformatic and functional analyses (Udler *et al.* 2010).

The analyses were repeated restricting the iCOGS and NSECG studies to those cases with endometrioid

or non-endometrioid histology (the ANECS and SEARCH GWAS sample sets contained only endometrioid histology cases).

Associations between SNPs and E_2 concentrations were tested using the natural logarithm transformed ratio of E_2 to T concentrations, adjusting for laboratory batch, study (EPIC HC2 or SIBS), age and BMI at blood draw, prior HRT use (yes or no) and menopausal status (2–5 years since menopause or >5 years since menopause) using ProbABEL software (Aulchenko et al. 2010). Given the family-based design of the SIBS study, we used the matrix of kinship coefficients to adjust for the non-independence of relatives. This approach is also expected to avoid the effects of population stratification (Chen & Abecasis 2007).

For the analysis including the additional genotyping in the SIBS samples, the data were re-analyzed for all 2767 women, using the sandwich variance estimator to obtain standard errors robust to familial clustering (in the absence of a kinship coefficient matrix for the complete set).

The associations between the most significant SNP and the two phenotypes (endometrial cancer and E_2 concentration) were repeated after stratifying the datasets according to quartiles of age diagnosis (cases) or interview (controls) or quartiles of BMI. These analyses were restricted to the iCOGS dataset (plus the SIBS replication set for the E_2 analysis), as BMI was not available for all cases and controls in the GWAS sets. Since T concentration had not been measured in the EPIC HC1 women, the analyses stratified by BMI and age were based on log-transformed E_2 concentrations uncorrected for T, in order to maximise the sample size and hence the statistical power. Quartiles were based on the variables' distributions in cases, to ensure roughly equivalent statistical power across the quartiles. The same categories were used for the E_2 analysis to allow direct comparisons between the two phenotypes.

We used a Mendelian randomization style approach to compare the observed association of the top SNP with endometrial cancer with that predicted based on a SNP's effect on E_2 levels. For this we re-estimated the effect of each effect allele on E_2 (β) adjusting only for study and laboratory batch. Using a published estimate of the endometrial cancer OR associated with a doubling of post-menopausal E_2 concentration (Lukanova et al. 2004), we multiplied the natural logarithm of this OR by the ratio ($\ln\beta/\ln 2$) to obtain a predicted endometrial cancer OR per effect allele. We then compared this predicted OR to that observed, to assess whether the observed association between the SNP and endometrial cancer is compatible

with a causal association between higher post-menopausal E_2 concentration and endometrial cancer. In the same way, we compared the predicted effect of the top SNP on breast cancer risk (based on a published estimate of the effect of doubling E_2 concentration on breast cancer risk (Key et al. 2002)) with that observed in the iCOGS BCAC study of 45 290 breast cancer cases and 41 880 controls of European ancestry (Michailidou et al. 2013).

All statistical analyses used R software unless otherwise stated, and all statistical tests were two-sided. The association plot was produced using LocusZoom (Pruim et al. 2010).

Results

The CYP19A1 association with endometrial cancer is explained by a single signal

Genetic imputation of the ~1.2 Mb region of chromosome 15 between 50 899 000–52 095 000 using the April 2012 release of the 1000 Genomes reference panel in four independent case–control sets yielded post-QC genotype information for 2937 SNPs in 6608 endometrial cancer cases and 37 925 controls (Supplementary Table 1A, see section on supplementary data given at the end of this article). Of these SNPs, 100 had been genotyped in the largest study (iCOGS), and 191, 201, and 187 in the three GWAS sets (SEARCH, ANECS, and NSECG GWASs respectively).

Combining results across the four studies, 171 SNPs had $P < 1 \times 10^{-4}$, compared with an expected number of less than one under the null hypothesis (Supplementary Table 2, see section on supplementary data given at the end of this article). Fifty SNPs were significant at the conventional GWAS threshold of 5×10^{-8} , of which rs727479 in intron 2 was the most significantly associated (OR per A allele = 1.15, CI = 1.11–1.21, $P = 4.81 \times 10^{-11}$, Table 1, Fig. 2A). This SNP was directly genotyped in all four studies, and the strength of the association did not differ among studies ($I^2 = 0.0\%$, $P_{\text{het}} = 0.92$). (Supplementary Table 2, see section on supplementary data given at the end of this article, Supplementary Fig. 1A). Conditioning on rs727479, no other SNPs reached $P < 10^{-4}$ (Supplementary Table 2).

These results suggest that rs727479, or a SNP correlated with it, is causally related to disease. Based on a likelihood ratio threshold of 1:100 (Udler et al. 2010), 28 SNPs remain as possible causal variants (Supplementary Table 2, see section on supplementary data given at the end of this article); all are correlated with rs727479

Table 1 SNP rs727479 A-allele associations with endometrial cancer and with circulating E₂ levels

	N _{cases} /N _{ctrls}	f _{case} /f _{ctrl}	OR (95% CI)	P value	P _{interaction}
Endometrial cancer	6608/37 925	0.688/0.651	1.15 (1.11, 1.21)	4.81 × 10 ⁻¹¹	
BMI Q1 (<24.3 kg/m ²)	715/5463	0.668/0.643	1.08 (0.95, 1.24)	0.25	
BMI Q2 (24.3–28.0 kg/m ²)	718/4372	0.677/0.648	1.12 (0.98, 1.29)	0.10	
BMI Q3 (28.0–33.2 kg/m ²)	702/2910	0.697/0.648	1.21 (1.04, 1.40)	0.012	
BMI Q4 (≥33.2 kg/m ²)	721/1254	0.709/0.651	1.25 (1.05, 1.49)	0.012	0.047
Age Q1 (<57.0 years)	1005/14 106	0.679/0.653	1.10 (1.00, 1.22)	0.060	
Age Q2 (57.0–63.0 years)	1079/5309	0.679/0.652	1.10 (0.98, 1.23)	0.10	
Age Q3 (63.0–69.0 years)	1145/4699	0.693/0.644	1.28 (1.15, 1.44)	1.73 × 10 ⁻⁵	
Age Q4 (≥69.0 years)	1081/2948	0.701/0.651	1.24 (1.08, 1.42)	0.0019	0.19
Histology:					
Endometrioid	5611/37 925	0.690/0.651	1.16 (1.11, 1.22)	1.12 × 10 ⁻¹⁰	
Non-endometrioid	887/37 925	0.678/0.651	1.08 (0.98, 1.20)	0.13	0.15
	N _{samples}	f	β (se)	P value	
E ₂ levels	2767	0.656	0.096 (0.018)	7.40 × 10 ⁻⁸	
BMI Q1 (<24.3 kg/m ²)	868	0.656	0.052 (0.032)	0.11	
BMI Q2 (24.3–28.0 kg/m ²)	985	0.650	0.097 (0.031)	0.0020	
BMI Q3 (28.0–33.2 kg/m ²)	664	0.671	0.122 (0.036)	8.45 × 10 ⁻⁴	
BMI Q4 (≥33.2 kg/m ²)	250	0.642	0.096 (0.058)	0.099	0.066
Age Q1 (<57.0 years)	287	0.656	0.095 (0.083)	0.25	
Age Q2 (57.0–63.0 years)	802	0.661	0.104 (0.030)	5.65 × 10 ⁻⁴	
Age Q3 (63.0–69.0 years)	789	0.653	0.080 (0.032)	0.013	
Age Q4 (≥69.0 years)	889	0.654	0.105 (0.031)	6.48 × 10 ⁻⁴	0.90

f, frequency of the rs727479 A allele; age is in years; Q1–Q4 are quartiles of the distribution of BMI or age in the endometrial cases. The endometrial cancer analysis by quartiles is adjusted for age. E₂ concentrations are log transformed and adjusted for laboratory batch, study, age at blood draw, BMI, HRT use and menopausal status.

at $r^2 > 0.2$, and five were genotyped in iCOGS (rs7175531, rs727479, rs17601876, rs12050767, and rs749292).

Considering only the 5611 endometrioid–histology cases, 41 SNPs had $P < 5 \times 10^{-8}$, of which rs727479 was the most significant (OR per A allele = 1.16, CI = 1.11–1.22, $P = 1.12 \times 10^{-10}$, Table 1). The effect estimate was somewhat smaller in the analysis restricted to the 887 non-endometrioid cases (OR = 1.08, CI = 0.98–1.20, $P = 0.13$), although the difference in allele frequencies between endometrioid and non-endometrioid cases was not significant ($P = 0.15$, Table 1). No SNPs reached $P < 1 \times 10^{-4}$ in the analysis restricted to the non-endometrioid histology cases ($n = 887$) (Supplementary Table 2, see section on supplementary data given at the end of this article).

Stronger associations between rs727479 and endometrial cancer in women of older age and higher BMI

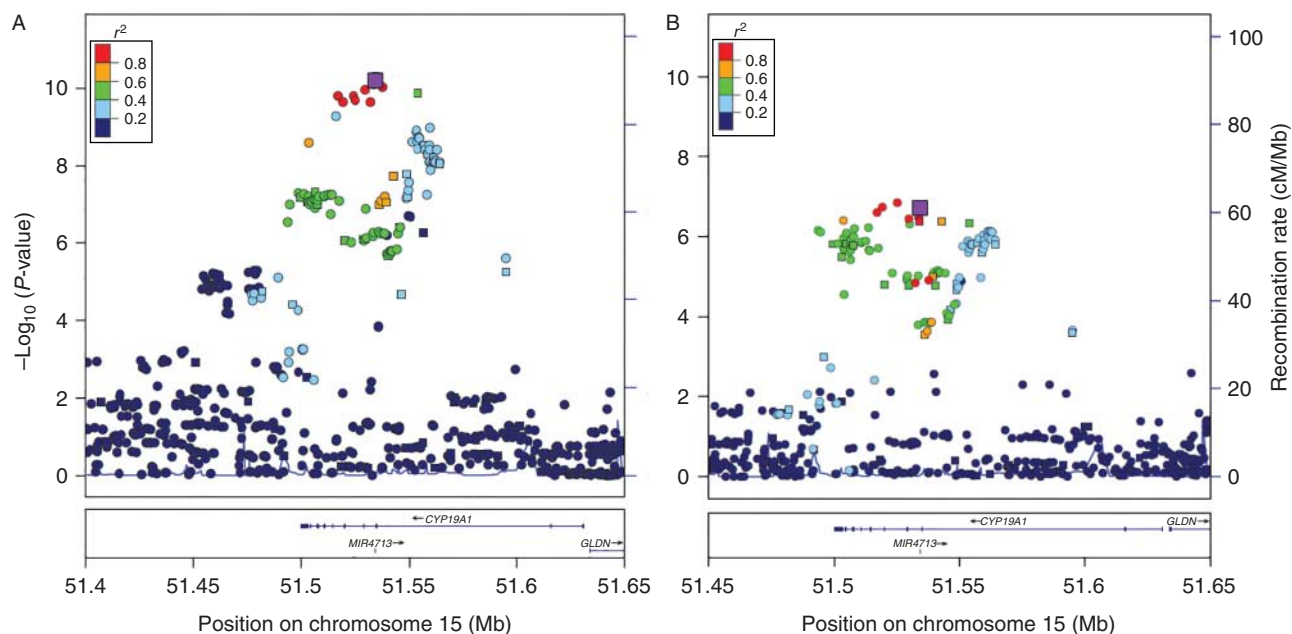
There was some suggestion of a stronger association between rs727479 and endometrial cancer among older women (OR = 1.28 (1.15–1.44) $P = 1.7 \times 10^{-5}$ and OR = 1.24 (1.08–1.42) $P = 1.9 \times 10^{-3}$ for the third and fourth quartiles of age respectively; Table 1), although the interaction between rs727479 and age was not significant ($P = 0.19$).

BMI was available for 2858 cases and 14 098 controls from the iCOGS studies. As expected, BMI was positively

associated with endometrial cancer risk (OR = 1.60 (1.54–1.66) per quartile, $P < 10^{-100}$). SNP rs727479 was not associated with BMI in previous analyses ($P = 0.94$ in the > 230 000 GIANT consortium participants (Locke et al. 2015)), *ENREF_24* nor in the iCOGS controls ($P = 0.31$). There was evidence of a stronger disease association for rs727479 among women with higher BMI (interaction $P = 0.034$, which was slightly attenuated when adjusted for age, $P = 0.047$), with the strongest association among women in the highest quartile (OR = 1.25 (1.05–1.49), $P = 0.012$, adjusting for age), (Table 1, Fig. 3A).

The set of correlated SNPs most significantly associated with endometrial cancer are all within the set of SNPs most significantly associated with the E₂:T ratio

T is the substrate for aromatization to E₂, and the ratio of E₂ to T concentrations, in essence, corrects for the variation in T levels. This correction would be expected to lead to a more direct relationship with aromatase activity, hence we used the E₂:T ratio as the hormonal phenotype in our initial fine-mapping of the *CYP19A1* region. Circulating E₂ and T concentrations were measured in 1733 healthy post-menopausal women from the EPIC Norfolk ($N = 1431$) and SIBS ($N = 302$) studies (Dunning et al. 2004, Prescott et al. 2012) who

**Figure 2**

Association of SNPs in the CYP19A1 region with (A) endometrial cancer and (B) E₂:T, highlighting rs727479. Each point indicates the statistical significance of the association between a SNP and endometrial cancer (Fig. 2A) or between a SNP and the E₂:T ratio (Fig. 2B). Squares denote SNPs directly

formed a subset of the controls in the iCOGS study. Imputation and post-imputation QC identical to that performed in the endometrial cancer analysis resulted in 1956 SNPs across the CYP19A1 region, of which 100 had been genotyped.

Adjusting for age, BMI, HRT use and menopausal status, 105 SNPs were associated with the E₂:T ratio at $P < 1 \times 10^{-4}$, including the lead endometrial cancer SNP rs727479 ($P = 2.06 \times 10^{-7}$). Two imputed SNPs had very slightly smaller P values than rs727479 (rs12592697, $P = 1.46 \times 10^{-7}$ and rs4775935, $P = 1.89 \times 10^{-7}$), both of which were in near-complete LD with rs727479 ($r^2 = 0.99$). Ninety four SNPs had odds of at least 1:100 compared with rs12592697 of being the causal E₂:T SNP, and also have $r^2 > 0.2$ with rs12592697 (Supplementary Table 2, see section on supplementary data given at the end of this article). Conditioning on rs12592697, no SNPs have $P < 1 \times 10^{-4}$; hence there is no evidence of a second signal for E₂:T in this region. The set of 95 SNPs contains all 28 non-excluded endometrial cancer candidate SNPs. Since rs727479 was the most significant of the genotyped SNPs and was statistically almost indistinguishable from the top two SNPs, rs727479 was used as the representative SNP for the set of 95 non-excluded SNPs. The rs727479 A allele was associated with higher E₂ concentration ($\beta = 0.092$,

$P = 3.80 \times 10^{-5}$) and, to a lesser extent, with lower T concentration ($\beta = -0.045$, $P = 0.057$).

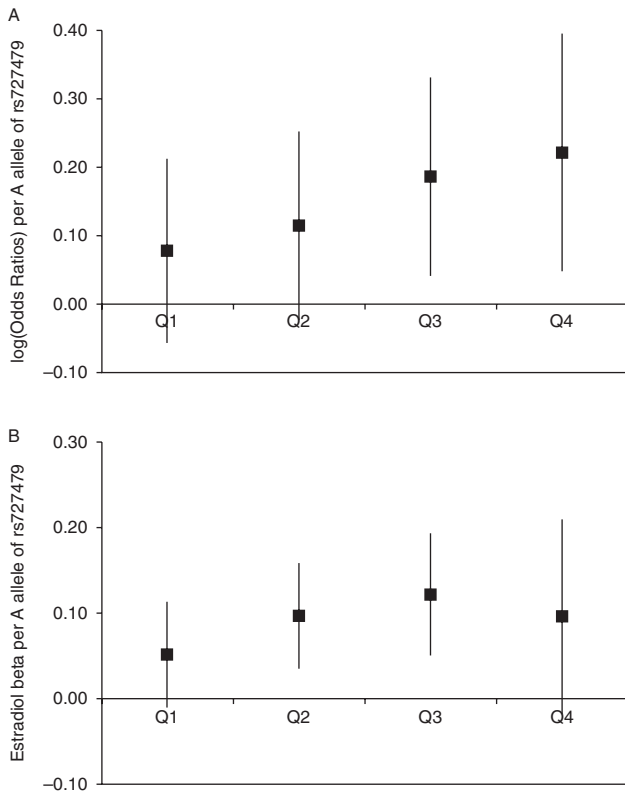
Including an additional 485 women from the EPIC-Norfolk cohort for whom E₂ but not T concentrations had been measured (and therefore the E₂:T ratio could not be computed), the association between rs727479 and E₂ became stronger ($\beta = 0.094$, $P = 3.1 \times 10^{-6}$). To further increase the statistical power we genotyped rs727479 in the remaining 549 SIBS samples for whom E₂ concentrations had been measured. In the full set of 2767 women, the association between E₂ concentrations and rs727479 approached the genome-wide significance threshold ($\beta = 0.096$, $P = 7.4 \times 10^{-8}$) (Table 1).

There was no evidence of a difference in the association between rs727479 and E₂ concentration with age ($P_{\text{interaction}} = 0.90$, Table 1). The rs727479-E₂ association was the strongest among women with the highest BMIs, with borderline significant evidence of an interaction ($P_{\text{interaction}} = 0.066$, Table 1, Fig. 3B).

Evidence that higher E₂ concentration is causal for endometrial cancer

Evidence that higher E₂ concentration is causal for endometrial cancer

Following a Mendelian randomization argument, if elevated E₂ concentration were causally associated with

**Figure 3**

Association of SNP rs727479 with (A) endometrial cancer and (B) E₂ levels, by quartile of BMI distribution. In Fig. 3A the log(OR) of endometrial cancer associated with each A allele of SNP rs727479 is shown for each quartile of the BMI distribution, adjusting for age. There is a borderline significant interaction between genotype and BMI quartile ($P=0.047$). Figure 3B shows the regression coefficient (β) for the association between each A allele of rs727479 and log-transformed E₂ levels (adjusted for laboratory batch, study, age at blood draw, BMI, HRT use and menopausal status), ($P_{\text{interaction}}=0.066$). For both plots, the error bars are 95% CI, and the quartiles are based on the BMI distribution in endometrial cancer cases, to allow for comparability between plots, and to ensure sufficient cases in each quartile.

endometrial cancer (as opposed to an association produced by confounding), then we would expect any SNP which raises E₂ to be proportionally associated with endometrial cancer. We observed an rs727429 per-A-allele increase in adjusted E₂ concentration of 10% (95% CI=6–14%, from the regression coefficient in Table 1 for log-transformed levels). Lukanova *et al.* (2004) estimated that the odds ratio for endometrial cancer associated with a doubling of post-menopausal E₂ concentration was 2.06 (CI=1.47–2.89; it was necessary to use an external estimate because hormone levels had only been measured in control subjects in our study). Based on this published estimate, the predicted per-allele OR for

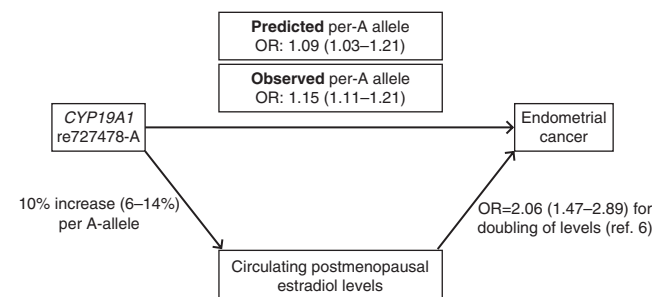
endometrial cancer would be 1.09 (CI=1.03–1.21), which is consistent with that observed in our study (OR=1.15, CI=1.11–1.21) (Fig. 4).

Candidate causal variants may regulate CYP19 expression

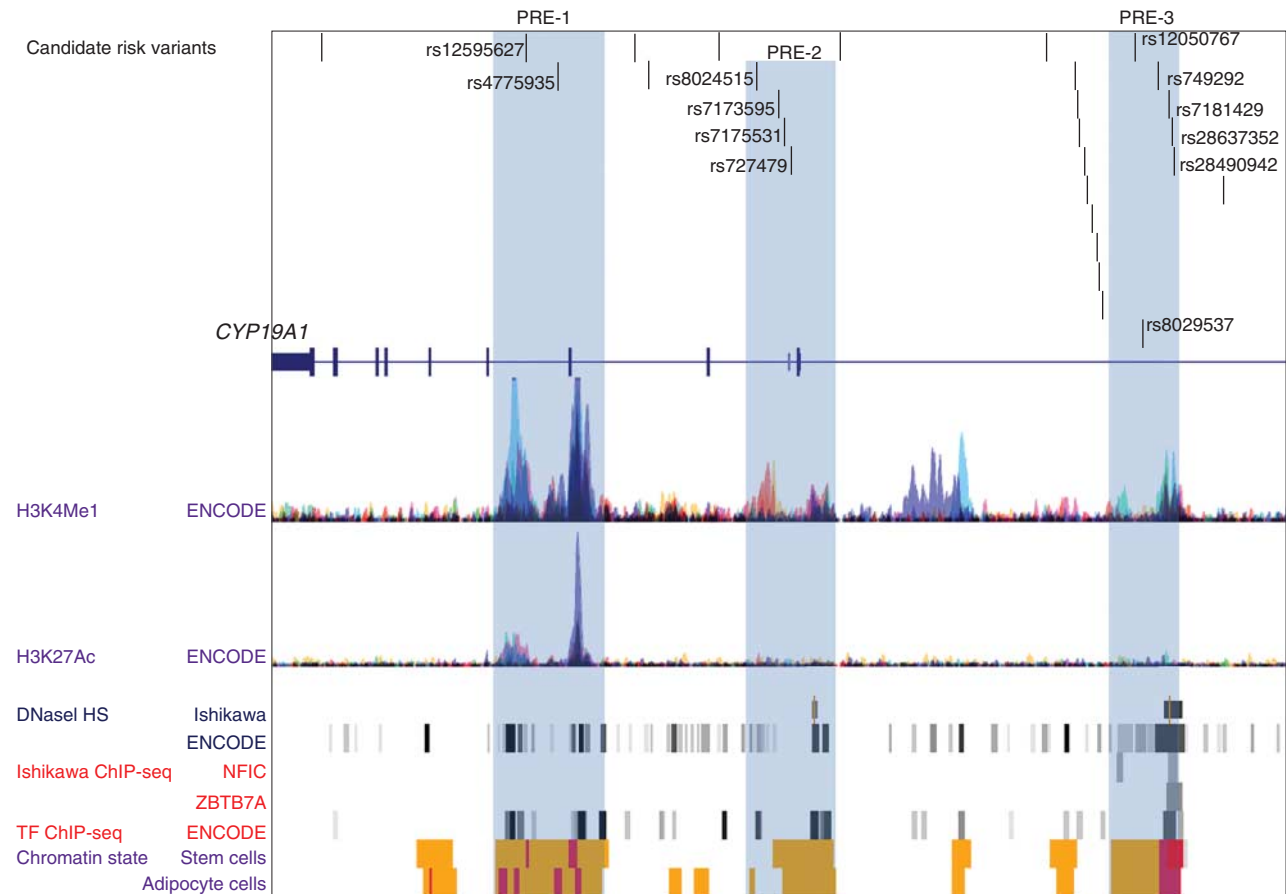
Bioinformatic analysis defined three putative regulatory elements (PREs) coincident with 12 of 28 candidate endometrial cancer causal variants prioritized by genetic analysis (Fig. 5). Altered binding of transcription factors was predicted for 10/12 candidates located within PREs, including top candidate rs727479 (Supplementary Table 3, see section on supplementary data given at the end of this article). For four of these (rs8024515, rs7181429, rs28637352, and rs28490942) there was experimental evidence for differential transcription factor (TF) binding in the cell types tested by ENCODE (Fig. 5) and SNPs rs7181429, rs28637352 overlap binding consensus sequences for NFIC and ZBTB7A in Ishikawa endometrial cancer cells (Fig. 5). Expression analysis identified nominal associations ($P<0.05$) between risk alleles for the 28 candidate causal variants and greater CYP19A1 expression in several tissues, with candidate SNP rs7181429's association with expression in blood passing a Bonferroni-corrected significance threshold ($P=6.0\times 10^{-5}$; corrected $P=1.62\times 10^{-4}$; Supplementary Table 4, see section on supplementary data given at the end of this article).

Discussion

We conducted the largest comprehensive genetic study to date of SNPs across the CYP19A1 hormone metabolism

**Figure 4**

The observed and predicted risks of endometrial cancer associated with each rs727479 A allele. The Observed per-A allele OR is that observed in this study of 6608 and 37 925 endometrial cancer cases and controls. The predicted per-A allele OR is estimated based on the observed association between rs727479 and E₂ levels in 2767 healthy post-menopausal women, and on the endometrial cancer OR associated with a doubling of post-menopausal E₂ levels reported by Lukanova *et al.* (2004).

**Figure 5**

Candidate endometrial risk variants coincide with three PREs. The 28 best candidate causal SNPs map towards the 3' end of the *CYP19A1* gene. The functional elements displayed were accessed through the UCSC Genome Browser and include: H3K4Me1 and H3K27Ac histone modifications measured by the Encyclopedia of DNA Elements (ENCODE) project in seven cell lines; open chromatin as delineated by DNaseI hypersensitivity sites (HS) in Ishikawa endometrial cancer cells (previously incorrectly named ECC-1)) and 125 other cell types; TF binding in Ishikawa cells and 91 cell lines within

ENCODE: 21/28 candidates are predicted to overlap TF binding sites.

Roadmap Epigenomics Project chromatin state segmentation of adipose-derived mesenchymal stem cells and adipocytes: orange bars represent enhancers and red bars represent regions flanking active transcription start sites. Twelve SNPs, marked by dbSNP rsIDs, are located in PREs: highlighted in blue. PREs were defined by the presence of histone modifications, DHS, TF binding and Roadmap enhancers.

gene and their associations with both endometrial cancer risk and circulating E_2 concentration. Using genotype information on nearly 3000 SNPs we have, for the first time, identified GWAS-level significant associations between SNPs in this region and endometrial cancer. Our finding that rs727479 is the most significantly associated SNP in this region confirms the findings of a previous candidate-SNP study (Setiawan *et al.* 2009) and provides a list of 28 SNPs which cannot be excluded as causal on the basis of statistical analyses. We found no evidence for further causal variants outside of this set. For example, rs749292, previously reported as a possible second signal (Setiawan *et al.* 2009), was not significantly associated with risk in our analysis after conditioning on

rs727479, given the number of SNPs included in the analysis ($P_{\text{cond}}=0.017$).

This is the first study to look at the *CYP19A1* endometrial cancer association by histology. The most significant risk SNP, rs727479, appears to be more strongly associated with endometrioid histology endometrial tumors than with the rarer and poorer prognosis non-endometrioid cancers. However, the confidence intervals for the two ORs are not incompatible, and there was no significant difference in allele frequencies between the women with endometrioid and non-endometrioid tumors ($P=0.15$). Despite the common description of non-endometrioid tumours as 'estrogen independent', recent work has shown that the two subtypes largely share

common risk factors, including those factors relating to endogenous or exogenous estrogen exposure (Setiawan *et al.* 2013), consistent with our findings.

We also confirmed at a borderline GWAS significance level ($P=7.4\times 10^{-8}$) the association between rs727479 and E_2 concentration previously reported in post-menopausal women (Haiman *et al.* 2007, Ahn *et al.* 2009, Beckmann *et al.* 2011, Prescott *et al.* 2012) and in males (Travis *et al.* 2009). It had been reported that rs749292 and rs727479 may act independently to alter levels (Haiman *et al.* 2007), but we found no association between rs749292 and E_2 concentration after conditioning on rs727479 ($P=0.20$). Our sample set partially overlaps with that included in the GWAS of hormone levels reported by Prescott *et al.* (2012), (the additional 549 SIBS women genotyped here for rs727479 had all been included in the Prescott *et al.* GWAS), but a combination of nearly 2000 extra subjects, denser genotyping in and around the *CYP19A1* gene and imputation to the 1000 Genomes reference panel allowed us to look in more detail at the region. Our results suggest the existence of a single causal variant in *CYP19A1* underlying both E_2 concentration and endometrial cancer, although we cannot exclude the possibility that there are instead multiple causal variants which are in sufficiently strong linkage disequilibrium that they are indistinguishable by epidemiological analysis.

We estimate that rs727479 accounts for 1.1% of the variance in post-menopausal E_2 concentration (in contrast, BMI accounts for 16% of the variance). Given that the estimated heritability of post-menopausal E_2 is around 40% (Varghese *et al.* 2012) it is clear that further genetic variants that affect E_2 concentration remain to be found.

The predominant source of circulating estrogens in post-menopausal women is adrenal androgens (T), which are converted to estrogens in peripheral adipose tissues, with the final stage of this process requiring aromatase, the enzyme encoded by the *CYP19A1* gene. Although E_2 concentrations and endometrial cancer risks are both higher in women with larger BMI regardless of *CYP19A1* genotype, there also appears to be a gene-environment interaction such that the associations of the rs727479 A allele with E_2 concentration and also with endometrial cancer risk increase according to BMI, with BMI presumably serving as a proxy for the amount of adipose tissue (Fig. 1). Whole body aromatization is known to be directly associated with BMI and the aromatization rate per cell has been found to increase with increasing age (Cleland *et al.* 1985). Together these data suggest that the

influence of the SNP may be more profound when the aromatization rate is already higher.

Twelve of the 28 candidate causal variants (including top candidate rs727429) lie in PREs. Further, the risk alleles of candidates located in PRE-3 associate with increased *CYP19A1* expression, and ENCODE and other data (Eeckhoute *et al.* 2006, Lee & Maeda 2012) indicate that the NFIC and ZBTB7A TFs may affect PRE-3 repressor activity in endometrial cancer cells. Taken together these lines of evidence indicate that candidate causal variants within PRE3 should have high priority for follow-up studies to test their effects on *CYP19A1* promoter activity through long-range chromatin interactions.

Using a Mendelian randomization argument with *CYP19A1* genotype as the instrumental variable, we have shown that the endometrial cancer OR per A-allele of rs727479 predicted on the basis of the per-allele effect on E_2 (1.09, CI=1.03–1.21) is in line with the directly observed effect of each A allele on endometrial cancer (OR=1.15, CI=1.11–1.21) (Fig. 4). Whereas previous epidemiological studies have observed a positive correlation between E_2 concentration and risk, it has not been possible to distinguish between a causal relationship and one produced by confounding. By exploiting the random allocation of alleles to individuals at conception, Mendelian randomization mimics a randomized control trial, thus removing possible confounding. We have therefore found good evidence that higher post-menopausal E_2 concentrations are indeed a causal risk factor for endometrial cancer, in line with other evidence such as the observed increase in risk associated with estrogen-only HRT but not with estrogen + progesterone HRT (Beral *et al.* 2005). Hence lowering E_2 levels has the potential to be a useful strategy for reducing risk. Ideally we would like to be able to test this hypothesis in a prospective study, whereby E_2 levels are measured at baseline for a cohort of healthy post-menopausal women who are then followed up for endometrial cancer incidence. However, such a study would need to be extremely large in order to accrue sufficient cancer cases within a reasonable time frame. It would also be interesting to repeat the study in a non-European setting in order to see whether the results are consistent across populations.

In Mendelian randomization, for a genetic variant to be a suitable instrument, in addition to being associated with the biomarker it must also be i) independent of the unobserved confounders of the biomarker-disease relationship and ii) associated with the disease only via the biomarker. Population stratification is the most obvious way in which condition i) can be violated.

To guard against this we restricted our study to subjects of European ancestry and adjusted for principal components. Condition ii) can be broken by pleiotropy, or similarly if the variant is in LD with a separate disease-associated variant. It is impossible to be certain that this condition has been met, and our finding that the observed association between rs727479 and endometrial cancer is slightly stronger than that predicted according to rs727479's effect on E_2 levels may in part be due to the SNP additionally acting on endometrial cancer risk via a pathway not involving circulating E_2 . A Mendelian randomization using an instrument consisting of multiple independent E_2 -associated SNPs, as and when they are reported (e.g., via larger GWAS) is one way to minimize the potential impact of pleiotropy on the results. We are confident that the results are not due to reverse causation, since E_2 measurements were all carried out in women from the control arm of the endometrial cancer study.

Despite higher endogenous E_2 concentration also being a known risk factor for breast cancer (Key et al. 2002), candidate SNP studies of *CYP19A1* have not reported an association with breast cancer (Haiman et al. 2007). Based on the 45 290 European-ancestry breast cancer cases and 41 880 controls from the BCAC iCOGS study, none of the 171 *CYP19A1* locus SNPs with $P < 10^{-4}$ for endometrial cancer were associated with breast cancer (Michailidou et al. 2013) (minimum $P = 0.0033$, data not shown). This may in part be because E_2 concentration is less strongly related to breast than to endometrial cancer; a doubling of E_2 concentration has been reported to be associated with an OR of 1.29 (CI = 1.15–1.44) for breast cancer (Key et al. 2002), from which we would predict a breast cancer OR of 1.03 (1.01–1.07) per A allele of rs727479. This predicted effect size is consistent with that observed for breast cancer in BCAC (OR = 1.02 (1.00–1.04); $P = 0.10$), but the effect size is too small to be confidently detected, even in a breast cancer study of this size.

In conclusion, we have confirmed at a genome-wide-level of significance the association between endometrial cancer and variants within the *CYP19A1* gene, and shown that all of the reported associations can be explained by a single risk peak. We have also provided evidence that the same set of variants is associated with higher E_2 concentration in post-menopausal women, supporting a causal role for E_2 in endometrial cancer. For both traits, the SNP associations were stronger in women with a higher BMI, suggesting a biologically plausible gene-environment interaction.

Supplementary data

This is linked to the online version of the paper at <http://dx.doi.org/10.1530/ERC-15-0386>.

Declaration of interest

The authors declare that there is no conflict of interest that could be perceived as prejudicing the impartiality of the research reported.

Funding

Fine-mapping analysis was supported by NHMRC project grant (ID#1031333) to A B Spurdle, D F Easton, and A M Dunning. A B Spurdle, P M Webb, G W Montgomery, and D R Nyholt are supported by the NHMRC Fellowship scheme. A M Dunning is supported by the Joseph Mitchell Trust. I Tomlinson is supported by Cancer Research UK and the Oxford Comprehensive Biomedical Research Centre. Funding for the iCOGS infrastructure came from: the European Community's Seventh Framework Programme under grant agreement no 223175 (HEALTH-F2-2009-223175) (COGS), Cancer Research UK (C1287/A10118, C1287/A 10710, C12292/A11174, C1281/A12014, C5047/A8384, C5047/A15007, C5047/A10692, C8197/A16565), the National Institutes of Health (CA128978), and Post-Cancer GWAS initiative (1U19 CA148537, 1U19 CA148065, and 1U19 CA148112 – the GAME-ON initiative), the Department of Defence (W81XWH-10-1-0341), the Canadian Institutes of Health Research (CIHR) for the CIHR Team in Familial Risks of Breast Cancer, Komen Foundation for the Cure, the Breast Cancer Research Foundation, and the Ovarian Cancer Research Fund. ANECS recruitment was supported by project grants from the NHMRC (ID#339435), The Cancer Council Queensland (ID#4196615) and Cancer Council Tasmania (ID#403031 and ID#457636). SEARCH recruitment was funded by a programme grant from Cancer Research UK (C490/A10124). Stage 1 2 case genotyping was supported by the NHMRC (ID#552402 and ID#1031333). This study makes use of data generated by the Wellcome Trust Case-Control Consortium (WTCCC). A full list of the investigators who contributed to the generation of the data is available from www.wtccc.org.uk. Funding for the project was provided by the Wellcome Trust under award 076113. We acknowledge use of DNA from the British 1958 Birth Cohort collection, funded by the Medical Research Council grant G0000934 and the Wellcome Trust grant 068545/Z/02 – funding for this project was provided by the Wellcome Trust under award 085475. NSECG was supported by the EU FP7 CHIBCHA grant and Wellcome Trust Centre for Human Genetics Grant 090532/Z/09Z, and CORGI by Cancer Research UK. Recruitment of the QIMR Berghofer controls was supported by the NHMRC. The University of Newcastle, the Gladys M Brawn Senior Research Fellowship scheme, The Vincent Fairfax Family Foundation, the Hunter Medical Research Institute, and the Hunter Area Pathology Service all contributed towards the costs of establishing the Hunter Community Study. The Bavarian Endometrial Cancer Study (BECS) was partly funded by the ELAN fund of the University of Erlangen. The Leuven Endometrium Study (LES) was supported by the Verelst Foundation for endometrial cancer. The Mayo Endometrial Cancer Study (MECS) and Mayo controls (MAY) were supported by grants from the National Cancer Institute of United States Public Health Service (R01 CA122443, P30 CA15083, P50 CA136393, and GAME-ON the NCI Cancer Post-GWAS Initiative U19 CA148112), the Fred C and Katherine B Andersen Foundation, the Mayo Foundation, and the Ovarian Cancer Research Fund with support of the Smith family, in memory of Kathryn Sladek Smith. MoMaTEC received financial support from a Helse Vest Grant, the University of Bergen, Melzer Foundation, The Norwegian Cancer Society (Harald Andersens legat), The Research Council of Norway and Haukeland University Hospital. The Newcastle Endometrial Cancer Study (NECS) acknowledges contributions from the University of Newcastle, The NBN Children's Cancer Research Group, Ms Jennie Thomas and the Hunter

Medical Research Institute. RENOCAS was supported through the regional agreement on medical training and clinical research (ALF) between Stockholm County Council and Karolinska Institutet (numbers: 20110222, 20110483, 20110141, and DF 07015), The Swedish Labor Market Insurance (number 100069) and The Swedish Cancer Society (number 11 0439). The Cancer Hormone Replacement Epidemiology in Sweden Study (CAHRES, formerly called The Singapore and Swedish Breast/Endometrial Cancer Study; SASBAC) was supported by funding from the Agency for Science, Technology and Research of Singapore (A*STAR), the US National Institutes of Health and the Susan G. Komen Breast Cancer Foundation. The Breast Cancer Association Consortium (BCAC) is funded by Cancer Research UK (C1287/A10118, C1287/A12014). The Ovarian Cancer Association Consortium (OCAC) is supported by a grant from the Ovarian Cancer Research Fund thanks to donations by the family and friends of Kathryn Sladek Smith (PPD/RPCI.07), and the UK National Institute for Health Research Biomedical Research Centres at the University of Cambridge. Additional funding for individual control groups is detailed in the [Supplementary Information](#), see section on [supplementary data](#) given at the end of this article. EPIC-Norfolk was funded by research programme grant funding from Cancer Research UK and the Medical Research Council with additional support from the Stroke Association, British Heart Foundation, Department of Health, Research into Ageing and Academy of Medical Sciences. The SIBS study was supported by program grant C1287/A10118 and project grants from Cancer Research UK (grant numbers C1287/8459).

Author contribution statement

A M Dunning, D F Easton, K-T Khaw, G W Montgomery, P D P Pharoah, A B Spurdle, I Tomlinson, and P M Webb obtained funding for the study. D F Easton and A B Spurdle designed the study and A B Spurdle and D J Thompson drafted the manuscript. D J Thompson conducted all statistical analyses and genotype imputation. D M Glubb and T A O'Mara conducted bioinformatic analyses. T A O'Mara and J N Painter co-ordinated the endometrial cancer iCOGS genotyping, and associated data management. J Dennis, K Michailidou and J P Tyrer co-ordinated quality control and data cleaning for the iCOGS control datasets, and K Michailidou provided quality control for the SEARCH GWAS control set. M K Bolla, Q Wang, M Shah, and R Luben were responsible for data management. T A O'Mara and A B Spurdle co-ordinated the ANECs GWAS genotyping; A M Dunning co-ordinated the SEARCH GWAS genotyping; I Tomlinson co-ordinated the NSECG GWAS genotyping. E Folklerd, D Doody, and M Dürst carried out the hormone measurements. The remaining authors were involved in the co-ordination and/or extraction of phenotypic information for contributing studies. All authors provided critical review of the manuscript.

Acknowledgements

The authors thank many individuals who participated in this study and numerous institutions and their staff who supported recruitment, detailed in full in the [Supplementary Text](#), which is linked to the online version of the paper at <http://dx.doi.org/10.1530/ERC-15-0386>.

References

- Ahn J, Schumacher FR, Berndt SI, Pfeiffer R, Albanes D, Andriole GL, Ardanaz E, Boeing H, Bueno-de-Mesquita B & Chanock SJ 2009 Quantitative trait loci predicting circulating sex steroid hormones in men from the NCI-Breast and Prostate Cancer Cohort Consortium (BPC3). *Human Molecular Genetics* **18** 3749–3757. (doi:10.1093/hmg/ddp302)
- Allen NE, Key TJ, Dossus L, Rinaldi S, Cust A, Lukanova A, Peeters PH, Onland-Moret NC, Lahmann PH, Berrino F *et al.* 2008 Endogenous sex hormones and endometrial cancer risk in women in the European Prospective Investigation into Cancer and Nutrition (EPIC). *Endocrine-Related Cancer* **15** 485–497. (doi:10.1677/ERC-07-0064)
- Aulchenko YS, Struchalin MV & van Duijn CM 2010 ProbABEL package for genome-wide association analysis of imputed data. *BMC Bioinformatics* **11** 134. (doi:10.1186/1471-2105-11-134)
- Beckmann L, Husing A, Setiawan VW, Amiano P, Clavel-Chapelon F, Chanock SJ, Cox DG, Diver R, Dossus L, Feigelson HS *et al.* 2011 Comprehensive analysis of hormone and genetic variation in 36 genes related to steroid hormone metabolism in pre- and postmenopausal women from the breast and prostate cancer cohort consortium (BPC3). *Journal of Clinical Endocrinology and Metabolism* **96** E360–E367. (doi:10.1210/jc.2010-0912)
- Beral V, Bull D & Reeves G & Million Women Study Collaborators 2005 Endometrial cancer and hormone-replacement therapy in the Million Women Study. *Lancet* **365** 1543–1551. (doi:10.1016/S0140-6736(05)66455-0)
- Chen WM & Abecasis GR 2007 Family-based association tests for genomewide association scans. *American Journal of Human Genetics* **81** 913–926. (doi:10.1086/521580)
- Cleland WH, Mendelson CR & Simpson ER 1985 Effects of aging and obesity on aromatase activity of human adipose cells. *Journal of Clinical Endocrinology and Metabolism* **60** 174–177. (doi:10.1210/jcem-60-1-174)
- C-Reactive Protein Coronary Heart Disease Genetics Collaboration, Wensley F, Gao P, Burgess S, Kaptoge S, Di Angelantonio E, Shah T, Engert JC, Clarke R & Davey-Smith G 2011 Association between C reactive protein and coronary heart disease: Mendelian randomisation analysis based on individual participant data. *British Medical Journal* **342** d548. (doi:10.1136/bmj.d548)
- Cuzick J, Powles T, Veronesi U, Forbes J, Edwards R, Ashley S & Boyle P 2003 Overview of the main outcomes in breast-cancer prevention trials. *Lancet* **361** 296–300. (doi:10.1016/S0140-6736(03)12342-2)
- Day N, Oakes S, Luben R, Khaw KT, Bingham S, Welch A & Wareham N 1999 EPIC-Norfolk: study design and characteristics of the cohort. European Prospective Investigation of Cancer. *British Journal of Cancer* **80** (Suppl 1) 95–103.
- Dowsett M, Goss PE, Powles TJ, Hutchinson G, Brodie AM, Jeffcoate SL & Coombes RC 1987 Use of the aromatase inhibitor 4-hydroxyandrostenedione in postmenopausal breast cancer: optimization of therapeutic dose and route. *Cancer Research* **47** 1957–1961.
- Dunning AM, Dowsett M, Healey CS, Tee L, Luben RN, Folklerd E, Novik KL, Kelemen L, Ogata S, Pharoah PD *et al.* 2004 Polymorphisms associated with circulating sex hormone levels in postmenopausal women. *Journal of the National Cancer Institute* **96** 936–945. (doi:10.1093/jnci/djh167)
- Eeckhoutte J, Carroll JS, Geistlinger TR, Torres-Arzayus MI & Brown M 2006 A cell-type-specific transcriptional network required for estrogen regulation of cyclin D1 and cell cycle progression in breast cancer. *Genes and Development* **20** 2513–2526. (doi:10.1101/gad.1446006)
- Eriksson AL, Lorentzon M, Vandenput L, Labrie F, Lindersson M, Syvanen AC, Orwoll ES, Cummings SR, Zmuda JM, Ljunggren O *et al.* 2009 Genetic variations in sex steroid-related genes as predictors of serum estrogen levels in men. *Journal of Clinical Endocrinology and Metabolism* **94** 1033–1041. (doi:10.1210/jc.2008-1283)
- Ferreira T & Marchini J 2011 Modeling interactions with known risk loci—a Bayesian model averaging approach. *Annals of Human Genetics* **75** 1–9. (doi:10.1111/j.1469-1809.2010.00618.x)
- Flote VG, Furberg A, McTiernan A, Frydenberg H, Ursin G, Iversen A, Lofteroed T, Ellison PT, Wist EA, Egeland T *et al.* 2014 Gene variations in oestrogen pathways, CYP19A1, daily 17 β -E2 and mammographic

- density phenotypes in premenopausal women. *Breast Cancer Research* **16** 499. (doi:10.1186/s13058-014-0499-2)
- Haiman CA, Dossus L, Setiawan VW, Stram DO, Dunning AM, Thomas G, Thun MJ, Albanes D, Altshuler D, Ardanaz E et al. 2007 Genetic variation at the CYP19A1 locus predicts circulating estrogen levels but not breast cancer risk in postmenopausal women. *Cancer Research* **67** 1893–1897. (doi:10.1158/0008-5472.CAN-06-4123)
- Higgins JP & Thompson SG 2002 Quantifying heterogeneity in a meta-analysis. *Statistics in Medicine* **21** 1539–1558. (doi:10.1002/sim.1186)
- Houlston RS, Cheadle J, Dobbins SE, Tenesa A, Jones AM, Howarth K, Spain SL, Broderick P, Domingo E, Farrington S et al. 2010 Meta-analysis of three genome-wide association studies identifies susceptibility loci for colorectal cancer at 1q41, 3q26.2, 12q13.13 and 20q13.33. *Nature Genetics* **42** 973–977. (doi:10.1038/ng.670)
- Howie BN, Donnelly P & Marchini J 2009 A flexible and accurate genotype imputation method for the next generation of genome-wide association studies. *PLoS Genetics* **5** e1000529. (doi:10.1371/journal.pgen.1000529)
- Howie B, Marchini J & Stephens M 2011 Genotype imputation with thousands of genomes. *G3* **1** 457–470. (doi:10.1534/g3.111.001198)
- Interleukin-6 Receptor Mendelian Randomisation Analysis (IL6R MR) Consortium 2012 The interleukin-6 receptor as a target for prevention of coronary heart disease: a mendelian randomisation analysis. *Lancet* **379** 1214–1224. (doi:10.1016/S0140-6736(12)60110-X)
- International Agency for Research on Cancer (IARC) Working Group on the Evaluation of Cancer-Preventive Strategies 2002 Weight control and physical activity. pp 1–315. Lyon, France: IARC Press.
- Key TJ & Pike MC 1988 The dose-effect relationship between 'unopposed' oestrogens and endometrial mitotic rate: its central role in explaining and predicting endometrial cancer risk. *British Journal of Cancer* **57** 205–212. (doi:10.1038/bjc.1988.44)
- Key T, Appleby P, Barnes I, Reeves G & Endogenous Hormones and Breast Cancer Collaborative Group 2002 Endogenous sex hormones and breast cancer in postmenopausal women: reanalysis of nine prospective studies. *Journal of the National Cancer Institute* **94** 606–616. (doi:10.1093/jnci/94.8.606)
- Kidokoro K, Ino K, Hirose K, Kajiyama H, Hosono S, Suzuki T, Kawase T, Hiraki A, Hamajima N, Tanaka H et al. 2009 Association between CYP19A1 polymorphisms and sex hormones in postmenopausal Japanese women. *Journal of Human Genetics* **54** 78–85. (doi:10.1038/jhg.2008.11)
- Lee SU & Maeda T 2012 POK/ZBTB proteins: an emerging family of proteins that regulate lymphoid development and function. *Immunological Reviews* **247** 107–119. (doi:10.1111/j.1600-065X.2012.01116.x)
- Locke AE, Kahali B, Berndt SI, Justice AE, Pers TH, Day FR, Powell C, Vedantam S, Buchkovich ML, Yang J et al. 2015 Genetic studies of body mass index yield new insights for obesity biology. *Nature* **518** 197–206. (doi:10.1038/nature14177)
- Low YL, Li Y, Humphreys K, Thalamuthu A, Li Y, Darabi H, Wedren S, Bonnard C, Czene K, Iles MM et al. 2010 Multi-variant pathway association analysis reveals the importance of genetic determinants of estrogen metabolism in breast and endometrial cancer susceptibility. *PLoS Genetics* **6** e1001012. (doi:10.1371/journal.pgen.1001012)
- Lukanova A, Lundin E, Micheli A, Arslan A, Ferrari P, Rinaldi S, Krogh V, Lenner P, Shore RE, Biessy C et al. 2004 Circulating levels of sex steroid hormones and risk of endometrial cancer in postmenopausal women. *International Journal of Cancer* **108** 425–432. (doi:10.1002/ijc.11529)
- Lundin E, Wirgin I, Lukanova A, Afanasyeva Y, Krogh V, Axelsson T, Hemminki K, Clendenen TV, Arslan AA, Ohlson N et al. 2012 Selected polymorphisms in sex hormone-related genes, circulating sex hormones and risk of endometrial cancer. *Cancer Epidemiology* **36** 445–452. (doi:10.1016/j.canep.2012.04.006)
- McEvoy M, Smith W, D'Este C, Duke J, Peel R, Schofield P, Scott R, Byles J, Henry D, Ewald B et al. 2010 Cohort profile: the hunter community study. *International Journal of Epidemiology* **39** 1452–1463. (doi:10.1093/ije/dyp343)
- McGregor B, Piftzner J, Zhu G, Grace M, Eldridge A, Pearson J, Mayne C, Aitken JF, Green AC & Martin NG 1999 Genetic and environmental contributions to size, color, shape, and other characteristics of melanocytic naevi in a sample of adolescent twins. *Genetic Epidemiology* **16** 40–53. (doi:10.1002/(SICI)1098-2272(1999)16:1<40::AID-GEPI4>3.0.CO;2-1)
- Michailidou K, Hall P, Gonzalez-Neira A, Ghoussaini M, Dennis J, Milne RL, Schmidt MK, Chang-Claude J, Bojesen SE & Bolla MK 2013 Large-scale genotyping identifies 41 new loci associated with breast cancer risk. *Nature Genetics* **45** 353–361, 361e351–352. (doi:10.1038/ng.2563)
- Painter JN, Anderson CA, Nyholt DR, Macgregor S, Lin J, Lee SH, Lambert A, Zhao ZZ, Roseman F, Guo Q et al. 2011 Genome-wide association study identifies a locus at 7p15.2 associated with endometriosis. *Nature Genetics* **43** 51–54. (doi:10.1038/ng.731)
- Painter JN, O'Mara TA, Batra J, Cheng T, Lose FA, Dennis J, Michailidou K, Tyrer JP, Ahmed S, Ferguson K et al. 2015 Fine-mapping of the HNF1B multicancer locus identifies candidate variants that mediate endometrial cancer risk. *Human Molecular Genetics* **24** 1478–1492. (doi:10.1093/hmg/ddu552)
- Paynter RA, Hankinson SE, Colditz GA, Kraft P, Hunter DJ & De Vivo I 2005 CYP19 (aromatase) haplotypes and endometrial cancer risk. *International Journal of Cancer* **116** 267–274. (doi:10.1002/ijc.21041)
- Pharoah PD, Tsai YY, Ramus SJ, Phelan CM, Goode EL, Lawrenson K, Buckley M, Fridley BL, Tyrer JP & Shen H 2013 GWAS meta-analysis and replication identifies three new susceptibility loci for ovarian cancer. *Nature Genetics* **45** 362–370, 370e361–362. (doi:10.1038/ng.2564)
- Prescott J, Thompson DJ, Kraft P, Chanock SJ, Audley T, Brown J, Leyland J, Folkerd E, Doody D, Hankinson SE et al. 2012 Genome-wide association study of circulating E2, T, and sex hormone-binding globulin in postmenopausal women. *PLoS ONE* **7** e37815. (doi:10.1371/journal.pone.0037815)
- Pruim RJ, Welch RP, Sanna S, Teslovich TM, Chines PS, Gliedt TP, Boehnke M, Abecasis GR & Willer CJ 2010 LocusZoom: regional visualization of genome-wide association scan results. *Bioinformatics* **26** 2336–2337. (doi:10.1093/bioinformatics/btq419)
- Setiawan VW, Doherty JA, Shu XO, Akbari MR, Chen C, De Vivo I, Demichle A, Garcia-Closas M, Goodman MT, Haiman CA et al. 2009 Two estrogen-related variants in CYP19A1 and endometrial cancer risk: a pooled analysis in the Epidemiology of Endometrial Cancer Consortium. *Cancer Epidemiology, Biomarkers & Prevention* **18** 242–247. (doi:10.1158/1055-9965.EPI-08-0689)
- Setiawan VW, Yang HP, Pike MC, McCann SE, Yu H, Xiang YB, Wolk A, Wentzensen N, Weiss NS, Webb PM et al. 2013 Type I and II endometrial cancers: have they different risk factors? *Journal of Clinical Oncology* **31** 2607–2618. (doi:10.1200/JCO.2012.48.2596)
- Spurdle AB, Thompson DJ, Ahmed S, Ferguson K, Healey CS, O'Mara T, Walker LC, Montgomery SB, Dermitzakis ET, Australian National Endometrial Cancer Study G et al. 2011 Genome-wide association study identifies a common variant associated with risk of endometrial cancer. *Nature Genetics* **43** 451–454. (doi:10.1038/ng.812)
- Tao MH, Cai Q, Zhang ZF, Xu WH, Kataoka N, Wen W, Xiang YB, Zheng W & Shu XO 2007 Polymorphisms in the CYP19A1 (aromatase) gene and endometrial cancer risk in Chinese women. *Cancer Epidemiology, Biomarkers & Prevention* **16** 943–949. (doi:10.1158/1055-9965.EPI-06-1012)
- Travis RC, Schumacher F, Hirschhorn JN, Kraft P, Allen NE, Albanes D, Berglund G, Berndt SI, Boeing H, Bueno-de-Mesquita HB et al. 2009 CYP19A1 genetic variation in relation to prostate cancer risk and circulating sex hormone concentrations in men from the Breast and Prostate Cancer Cohort Consortium. *Cancer Epidemiology, Biomarkers & Prevention* **18** 2734–2744. (doi:10.1158/1055-9965.EPI-09-0496)

- Udler MS, Tyrer J & Easton DF 2010 Evaluating the power to discriminate between highly correlated SNPs in genetic association studies. *Genetic Epidemiology* **34** 463–468. (doi:10.1002/gepi.20504)
- Varghese JS, Smith PL, Folkerd E, Brown J, Leyland J, Audley T, Warren RM, Dowsett M, Easton DF & Thompson DJ 2012 The heritability of mammographic breast density and circulating sex-hormone levels: two independent breast cancer risk factors. *Cancer Epidemiology, Biomarkers & Prevention* **21** 2167–2175. (doi:10.1158/1055-9965.EPI-12-0789)
- Wellcome Trust Case Control Consortium 2007 Genome-wide association study of 14,000 cases of seven common diseases and 3,000 shared controls. *Nature* **447** 661–678. (doi:10.1038/nature05911)
- Zeleniuch-Jacquotte A, Akhmedkhanov A, Kato I, Koenig KL, Shore RE, Kim MY, Levitz M, Mittal KR, Raju U, Banerjee S et al. 2001 Postmenopausal endogenous oestrogens and risk of endometrial cancer: results of a prospective study. *British Journal of Cancer* **84** 975–981. (doi:10.1054/bjoc.2001.1704)

Received in final form 22 October 2015

Accepted 16 November 2015

Made available online as an Accepted Preprint

16 November 2015