

UCLA

UCLA Previously Published Works

Title

Corrigendum to “Examination of scenarios introducing rubella vaccine in the Democratic Republic of the Congo” [Vaccine: X 9 (2021) 100127]

Permalink

<https://escholarship.org/uc/item/2fb131vf>

Authors

Cheng, Alvan
Frey, Kurt
Mwamba, Guillaume Ngoie
et al.

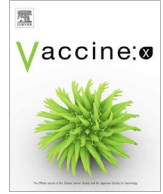
Publication Date

2022-12-01

DOI

10.1016/j.jvacx.2022.100215

Peer reviewed



Corrigendum

Corrigendum to “Examination of scenarios introducing rubella vaccine in the Democratic Republic of the Congo” [Vaccine: X 9 (2021) 100127]



Alvan Cheng^{a,1}, Kurt Frey^{b,*,1}, Guillaume Ngoie Mwamba^c, Kevin A. McCarthy^b, Nicole A. Hoff^a, Anne W. Rimoin^a

^a Department of Epidemiology, University of California, Los Angeles, CA, USA

^b Institute for Disease Modeling, Bill & Melinda Gates Foundation, Seattle, WA, USA

^c VillageReach, Ngaliema, Kinshasa, The Democratic Republic of the Congo

The authors regret age-specific fertility rates were incorrectly applied when determining burden of congenital rubella syndrome (CRS). Annual fertility rates, averaged over 3 years, were used as rate-per-3-years. Estimated CRS burden in all scenarios should be 3 times greater than indicated.

Corrected scales for the x-axis in Figs. 3 and 4 should be 0–6 (instead of 0–2 as depicted). Corrected scale for the y-axis in Fig. 5a should be 0–3 (instead of 0–1 as depicted), and the corrected scale for the x-axis in Fig. 5b should be 0–12 (instead of 0–4 as depicted).

Fig. 3:

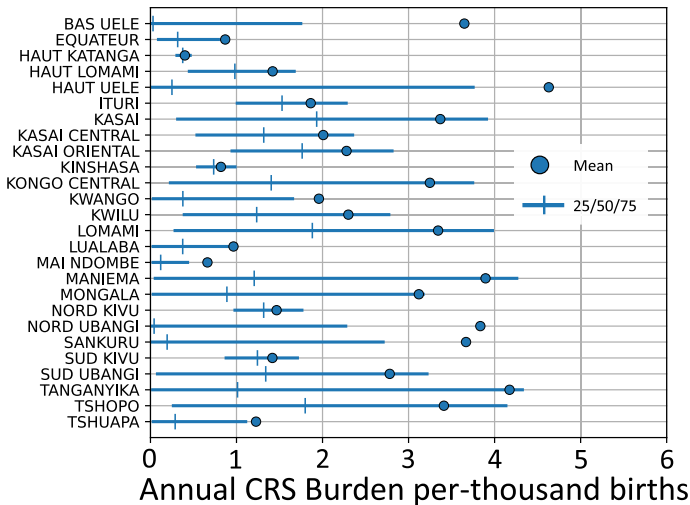
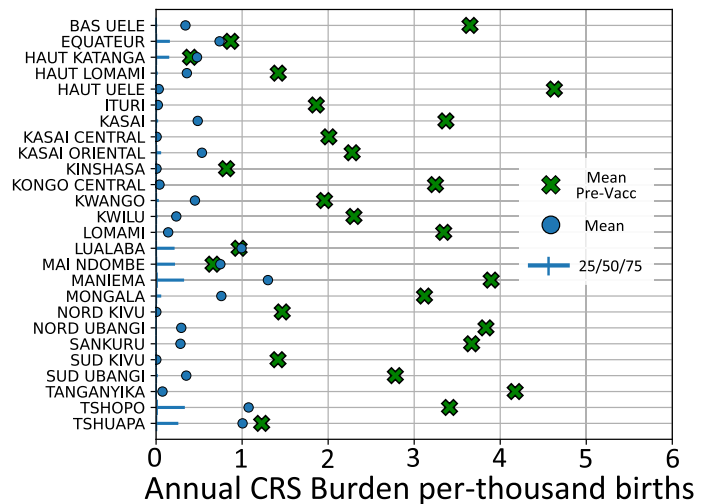


Fig. 4:



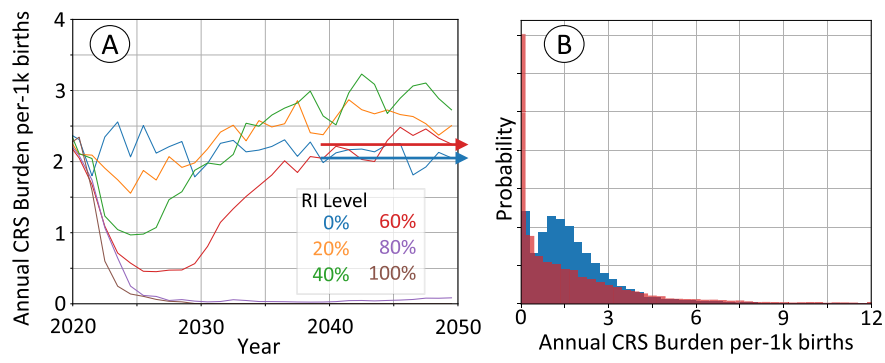
DOI of original article: <https://doi.org/10.1016/j.jvax.2021.100127>

* Corresponding author.

E-mail address: kfrey@idmod.org (K. Frey).

¹ Authors contributed equally.

Fig. 5:



The authors would like to apologise for any inconvenience caused.