

UC Davis

UC Davis Previously Published Works

Title

Complete plastome of *Coelastrum microporum* Nägeli (Scenedesmaceae, Sphaeropleales).

Permalink

<https://escholarship.org/uc/item/2gz1w4rm>

Journal

Mitochondrial DNA Part B: Resources, 8(9)

Authors

Lee, Chanhee
Cooper, Joshua
Moroni, Francesca
et al.

Publication Date

2023

DOI

10.1080/23802359.2023.2252941

Peer reviewed

Complete plastome of *Coelastrum microporum* Nägeli (Scenedesmaceae, Sphaeropleales)

Chanhee Lee^a, Joshua T. Cooper^b, Francesca Moroni^a, Ana M. Salim^a, Chaehee Lee^c, Trisha Spanbauer^d and Edward C. Theriot^e

^aPlant Biology Graduate Program, University of Texas at Austin, Austin, Texas, USA; ^bDepartment of Biological Sciences, Northern Kentucky University, Highland Heights, Kentucky, USA; ^cDepartment of Plant Sciences, University of California Davis, Davis, California, USA; ^dDepartment of Environmental Sciences and Lake Erie Center, University of Toledo, Toledo, Ohio, USA; ^eDepartment of Integrative Biology, University of Texas at Austin, Austin, Texas, USA

ABSTRACT

The genus *Coelastrum* Nägeli (Sphaeropleales; Scenedesmaceae) is a diverse genus of green algae with potential biotechnological applications. A sound understanding of its phylogeny will be a useful tool for predicting the distribution of traits that may enhance its utility, and may lead to a better understanding of its evolution and ecology. Here we present the plastome of *Coelastrum microporum*. Our exemplar was isolated from Gull Lake, Michigan and the complete plastome as assembled was 169,961 bp in length. The plastome contained 104 genes of which 68 were protein-coding genes (CDSs), 27 tRNA genes and three rRNA genes. The GC content of the plastome was 31.2%. The maximum likelihood phylogeny suggested that *C. microporum* was the sister group to a clade of single exemplars of three other genera in the Scenedesmaceae (*Tetrademus*, *Pectinodesmus* and *Coelastrella*).

ARTICLE HISTORY

Received 13 December 2022
Accepted 23 August 2023

KEYWORDS

Coelastrum; plastome;
Sphaeropleales; phylogeny

Introduction

Coelastrum microporum Nägeli, 1855 is a broadly distributed freshwater green alga with three-dimensional, spherical coenobia. This genus has recently been investigated for biotechnological applications such as bioremediation of wastewater, production of carotenoids, fatty acids, and biodiesel (Bhuyar et al. 2021; Liu et al. 2020; Maltsev et al. 2021). Understanding the plastome is known to be important to understanding synthesis and regulation of unsaturated fatty acids (He et al. 2020). Phylogenetic reconstructions have been attempted using marker genes such as ITS, and 18s rDNA regions (Goetze et al. 2020; Hegewald et al. 2010), with *Coelastrum* Nägeli itself recovered as monophyletic or not. The plastome of *C. microporum* has not been published previously. To help better understand evolutionary relationships of *Coelastrum*, we fully sequenced the plastome of *C. microporum* and compared it to available plastomes of other Sphaeropleales.



Materials and methods


Coelastrum microporum was collected from Gull Lake in southwest Michigan (42.403061 N; 85.414341 W) in July 2019. The isolated strain was cultured in WC artificial freshwater medium (Guillard 1975) at 14 °C (a temperature similar to lakes when samples were collected, which should be conducive for the



Figure 1. Light Micrograph of *Coelastrum microporum*, taken by the authors, from the strain deposited as UTEX 3178.

maximum growth and survival rate of most species (Thomas et al. 2016)). The strain used is available from the UTEX Culture Collection of Algae (<https://utex.org>, Dr. David Nobles, Curator and Director: dnobles@austin.utexas.edu) as *Coelastrum microporum* UTEX LB 3178. Light microscopy using morphological criteria were used for initial species identification, with the isolate (Figure 1) corresponding to morphological descriptions of *C. microporum* (Komárek and Fott 1983).

CONTACT Edward C. Theriot  etheriot@austin.utexas.edu  Department of Integrative Biology, University of Texas at Austin, Austin, TX 78705, USA

 Supplemental data for this article can be accessed online at <https://doi.org/10.1080/23802359.2023.2252941>.

© 2023 The Author(s). Published by Informa UK Limited, trading as Taylor & Francis Group. This is an Open Access article distributed under the terms of the Creative Commons Attribution-NonCommercial License (<http://creativecommons.org/licenses/by-nc/4.0/>), which permits unrestricted non-commercial use, distribution, and reproduction in any medium, provided the original work is properly cited. The terms on which this article has been published allow the posting of the Accepted Manuscript in a repository by the author(s) or with their consent.

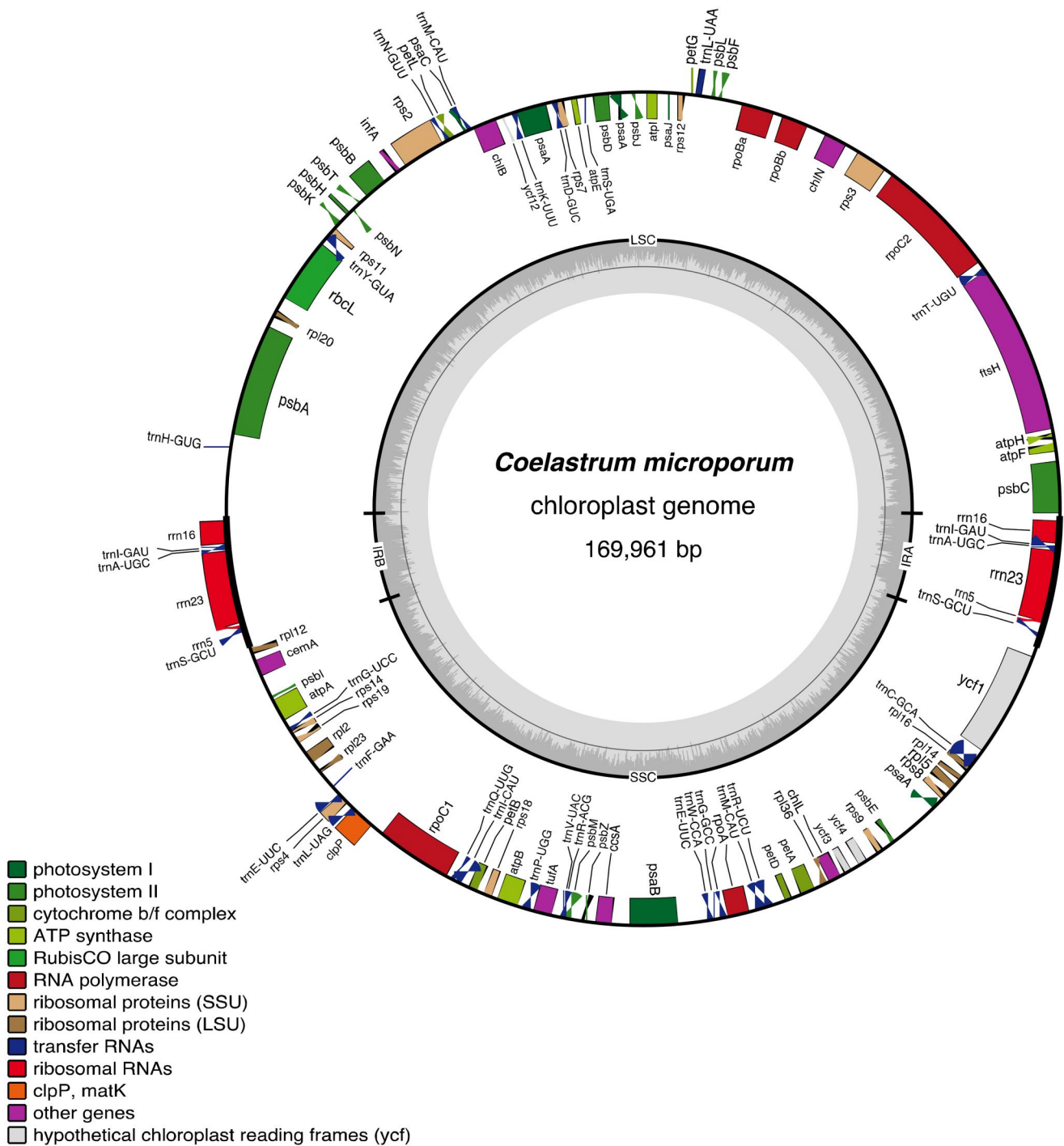


Figure 2. Gene map of *Coelastrum microporum* plastome. Inverted repeats (IRA and IRB) and two single-copy regions are indicated on the inner circle with G/C content (dark grey) and A/T content (light grey). colored gene boxes are indicated by functional group as shown in the key.

DNA was extracted using a DNeasy® Plant Mini Kit (Qiagen, Hilden, Germany) following the kit's protocol. Monoclonal cultures were sampled in late exponential phase after visual inspection in the light microscope of the culture for fungal hyphae and bacterial abundance. Approximately 30 million 150 bp paired-end reads were sequenced using Illumina HiSeq 4000 platform (Illumina, San Diego, CA) at the Genome Sequencing and Analysis Facility (GSAF) at the University of Texas at Austin. The raw reads were trimmed using BBDuk from the BBTools software package (<https://jgi.doe.gov/data-and-tools/bbtools/>), and assembled with NOVOPlasty v. 4.2.1

(Dierckxsens et al. 2017). The assembled contig was imported into Geneious 2020.2.4 (Biomatters Ltd., <http://www.geneious.com> (Kearse et al. 2012)), and compared to vouchered sequences from the NCBI database using BLAST (Altschul et al. 1990) to check for any possible contaminants. The contig was annotated with available complete plastomes of closely related species in Geneious. The plastome was mapped using Bowtie2 v.2 (Langmead and Salzberg 2012) with trimmed reads to determine sequence coverage and potential mis-assemblies. Verification of protein-coding genes was manually performed in Geneious, and tRNA genes were verified using tRNAscan-SE

extracted DNA; Chanhee Lee, Ana Salim, Chaehee Lee, and Francesca Moroni made substantial contributions to the acquisition and analysis of data; Chanhee Lee and Edward Theriot contributed substantially to authorship; all authors contributed to revision of the manuscript, and all approved the final version to be published. All authors agree to be accountable for all aspects of the work.

Disclosure statement

The authors report that there is no conflict of interest involved.

Geolocation

Gull Lake, Kalamazoo County, Michigan. 42.403061 N; 85.414341 W.

Research statement

Phytoplankton sampling and cell isolation was done following all local, state, and US Federal regulations, in the publicly accessible Gull Lake. To our knowledge there is no convention on ethical treatment of microalgae.

Funding

This work was supported by the USA National Science Foundation grant number 1754614.

Data availability statement

The genome sequence data that supported the findings of this study are openly available in GenBank of NCBI at (<https://www.ncbi.nlm.nih.gov/>) under the accession no. NC_068582. The associated BioProject, SRA, and Bio-Sample numbers are PRJNA909268, PRJNA909268, and SAMN32062636, respectively. The strain used is available from the UTEX Culture Collection of Algae (<https://utex.org>, Dr. David Nobles, Curator and Director: dno-bles@austin.utexas.edu) as *Coelastrum microporum* UTEX LB 3178.

References

- Altschul SF, Gish W, Miller W, Myers EW, Lipman DJ. 1990. Basic local alignment search tool. *J Mol Biol.* 215(3):403–410. doi:10.1016/S0022-2836(05)80360-2.
- Bhuyar P, Sundararaju S, Rahim MHA, Maniam GP, Govindan N. 2021. Enhanced productivity of lipid extraction by urea stress conditions on marine microalgae *Coelastrum* sp. for improved biodiesel production. *Bioresour Technol Rep.* 15:100696. doi:10.1016/j.biteb.2021.100696.
- Chan PP, Lowe TM. 2019. tRNAscan-SE: searching for tRNA Genes in Genomic Sequences. In: Kollmar, M. (Ed.), *Gene prediction: methods and protocols*. Springer New York, New York, NY, p. 1–14.
- de Cambiaire JC, Otis C, Lemieux C, Turmel M. 2006. The complete chloroplast genome sequence of the chlorophycean green alga *Scenedesmus obliquus* reveals a compact gene organization and a biased distribution of genes on the two DNA strands. *BMC Evol Biol.* 6(1):37. doi:10.1186/1471-2148-6-37.
- Dierckxsens N, Mardulyn P, Smits G. 2017. NOVOPlasty: *de novo* assembly of organelle genomes from whole genome data. *Nucl Acids Res.* 45(4): e18–e18. doi:10.1093/nar/gkw955.
- Fučíková K, Lewis PO, Lewis LA. 2016. Chloroplast phylogenomic data from the green algal order Sphaeropleales (Chlorophyceae, Chlorophyta) reveal complex patterns of sequence evolution. *Mol Phylogenet Evol.* 98:176–183. doi:10.1016/j.ympev.2016.01.022.
- Goecke F, Noda J, Paliocha M, Gislérød HR. 2020. Revision of *Coelastrrella* (Scenedesmaaceae, Chlorophyta) and first register of this green coccoid microalga for continental Norway. *World J Microbiol Biotechnol.* 36(10):149. doi:10.1007/s11274-020-02897-0.
- Guillard RRL. 1975. Culture of phytoplankton for feeding marine invertebrates. In: Smith, W.L., Chanley, M.H. (Eds.), *Culture of marine invertebrate animals*. Plenum Press, New York, p. 26–60.
- He M, Qin CX, Wang X, Ding NZ. 2020. Plant unsaturated fatty acids: biosynthesis and regulation. *Front Plant Sci.* 11:390. doi:10.3389/fpls.2020.00390.
- Hegewald E, Wolf M, Keller A, Friedl T, Krienitz L. 2010. ITS2 sequence-structure phylogeny in the Scenedesmaaceae with special reference to *Coelastrum* (Chlorophyta, Chlorophyceae), including the new genera *Comasiella* and *Pectinodesmus*. *Phycologia.* 49(4):325–335. doi:10.2216/09-61.1.
- Kalyaanamoorthy S, Minh BQ, Wong TK, Von Haeseler A, Jermini LS. 2017. ModelFinder: fast model selection for accurate phylogenetic estimates. *Nat Methods.* 14(6):587–589. doi:10.1038/nmeth.4285.
- Katoh K, Standley DM. 2013. MAFFT multiple sequence alignment software version 7: improvements in performance and usability. *Mol Biol Evol.* 30(4):772–780. doi:10.1093/molbev/mst010.
- Kearse M, Moir R, Wilson A, Stones-Havas S, Cheung M, Sturrock S, Buxton S, Cooper A, Markowitz S, Duran C, et al. 2012. Geneious Basic: an integrated and extendable desktop software platform for the organization and analysis of sequence data. *Bioinformatics.* 28(12): 1647–1649. doi:10.1093/bioinformatics/bts199.
- Komárek J, Fott B. 1983. Chlorophyceae (Grünalgen) Ordnung: chlorococcales. E. Schweizerbart'sche Verlagsbuchhandlung (Nägele u. Obermiller), Stuttgart.
- Langmead B, Salzberg SL. 2012. Fast gapped-read alignment with Bowtie 2. *Nat Methods.* 9(4):357–359. doi:10.1038/nmeth.1923.
- Lemieux C, Otis C, Turmel M. 2014. Chloroplast phylogenomic analysis resolves deep-level relationships within the green algal class Trebouxiophyceae. *BMC Evol Biol.* 14(1):211. doi:10.1186/s12862-014-0211-2.
- Lemieux C, Vincent AT, Labarre A, Otis C, Turmel M. 2015. Chloroplast phylogenomic analysis of chlorophyte green algae identifies a novel lineage sister to the Sphaeropleales (Chlorophyceae). *BMC Evol Biol.* 15(1):264. doi:10.1186/s12862-015-0544-5.
- Liu Z, Hou Y, He C, Wang X, Chen S, Huang Z, Chen F. 2020. Enhancement of linoleic acid content stimulates astaxanthin esterification in *Coelastrum* sp. *Bioresour Technol.* 300:122649. doi:10.1016/j.biortech.2019.122649.
- Maltsev Y, Krivova Z, Maltseva S, Maltseva K, Gorshkova E, Kulikovskiy M. 2021. Lipid accumulation by *Coelastrrella multistriata* (Scenedesmaaceae, Sphaeropleales) during nitrogen and phosphorus starvation. *Sci Rep.* 11(1):19818. doi:10.1038/s41598-021-99376-9.
- Maul JE, Lilly JW, Cui L, DePamphilis CW, Miller W, Harris EH, Stern DB. 2002. The *Chlamydomonas reinhardtii* plastid chromosome: islands of genes in a sea of repeats. *Plant Cell.* 14(11):2659–2679. doi:10.1105/tpc.006155.
- McManus HA, Fučíková K, Lewis PO, Lewis LA, Karol KG. 2018. Organellar phylogenomics inform systematics in the green algal family Hydrodictyaceae (Chlorophyceae) and provide clues to the complex evolutionary history of plastid genomes in the green algal tree of life. *Am J Bot.* 105(3):315–329. doi:10.1002/ajb2.1066.
- McManus HA, Sanchez DJ, Karol KG. 2017. Plastomes of the green algae *Hydrodictyon reticulatum* and *Pediastrum duplex* (Sphaeropleales, Chlorophyceae). *PeerJ.* 5:e3325. doi:10.7717/peerj.3325.
- Minh BQ, Schmidt HA, Chernomor O, Schrempf D, Woodhams MD, von Haeseler A, Lanfear R. 2020. IQ-TREE 2: new models and efficient methods for phylogenetic inference in the genomic era. *Mol Biol Evol.* 37(5):1530–1534. doi:10.1093/molbev/msaa015.
- Theriot EC, Cannone JJ, Gutell RR, Alverson AJ. 2009. The limits of nuclear-encoded SSU rDNA for resolving the diatom phylogeny. *Eur J Phycol.* 44(3):277–290. doi:10.1080/09670260902749159.
- Thomas MK, Kremer CT, Litchman E. 2016. Environment and evolutionary history determine the global biogeography of phytoplankton temperature traits. *Glob Ecol Biogeogr.* 25(1):75–86. doi:10.1111/geb.12387.