

UC San Diego

UC San Diego Previously Published Works

Title

An Optimal Sensor Network Design Framework for Structural Health Monitoring Using Value of Information

Permalink

<https://escholarship.org/uc/item/2jp2q6wt>

ISBN

978-3-031-04089-4

Authors

Chadha, Mayank
Hu, Zhen
Farrar, Charles R
et al.

Publication Date

2023

DOI

10.1007/978-3-031-04090-0_12

Peer reviewed

An optimal sensor network design framework for structural health monitoring using value of information

Mayank Chadha¹, Zhen Hu², Charles R. Farrar³, and Michael D. Todd⁴

^{1,4}Department of Structural Engineering, University of California San Diego, La Jolla, CA 92093, USA

²Department of Industrial and Manufacturing Systems Engineering, University of Michigan-Dearborn, Dearborn, MI 48128, USA

³Engineering Institute, Los Alamos National Laboratory, New Mexico 87545, USA

ABSTRACT

A structural health monitoring (SHM) system is essentially an information-gathering mechanism. The information accumulated via an SHM system is crucial in making appropriate maintenance decisions over the life cycle of the structure. An SHM system is feasible if it leads to a greater *expected reward* (by making data and risk-informed decisions) than the intrinsic cost (or *investment risk*) of the information acquiring mechanism incurred over the lifespan of the structure. In short, the *value of information* acquired through a feasible SHM system manifest into net positive expected cost savings over the lifecycle of the structure. Traditionally, the cost-benefit analysis of an SHM system is carried out through pre-posterior decision analysis that helps one evaluate the benefit of an information-gathering mechanism using the expected value of information (EVoI) metric. EVoI is a differential measure and can be mathematically expressed as a difference between the *expected reward* and *investment risk*. Therefore, by definition, EVoI fails to capture the compounded savings over the lifecycle of the structure (since it quantifies absolute savings). Unlike EVoI, we quantify the economic advantage of installing an SHM system for inference of the structural state by using a normalized expected-reward (benefit of using an SHM system) to investment-risk (cost of SHM over the lifecycle) ratio metric (also called a risk-adjusted reward in short) as the objective function to quantify the value of information (VOI). We consider monitoring of a miter gate as the demonstration example and focus on the inference of an unknown and uncertain state-parameter(s) (i.e., damage from loss of contact between gate and wall, the “gap”) from the acquired sensor data. This paper proposes a sensor optimization framework that maximizes the net expected compounded savings achieved as a result of making SHM system-acquired data-informed lifecycle management decisions. We also inspect the impact of various risk-intensities of decision-makers on the optimal sensor design.

Keywords: Value of information, Bayesian optimization, Behavioral psychology, Structural health monitoring, Sensor design

INTRODUCTION

This paper briefly describes a sensor optimization framework with a target of maximizing the net savings as a consequence of using an SHM system over the lifecycle of the structure. Conventionally, the cost-benefit analysis of an SHM system is carried out through pre-posterior decision analysis using the expected value of information (EVoI) metric (a differential metric). We use *Expected Value of Information* (EVoI) (a differential metric) and *risk-adjusted-reward* (a normalized metric) as an optimality criterion. Finally, the goal of this research is to obtain the optimal sensor network design that maximizes the Value of Information over the lifecycle of the structure.

VALUE OF INFORMATION METRIC

Consider an SHM based decision-making problem. Let the state of the structure at time $t \in \Omega_T$ be defined by an uncertain state-parameter vector denoted by $\Theta(t)$ with a realization $\theta(t) \in \Omega_{\Theta(t)}$. The data acquired by the SHM system $z \in \Omega_Z$ at time t is defined by a random variable $X_z(t)$, where $x_z(t) \in \Omega_{X_z(t)}$ denote an observed realization. The goal of an SHM system is to recommend a maintenance strategy selected from a set of predefined choices $\Omega_D = \{d_0, d_1, \dots, d_n\}$. For a risk-profile of the decision-maker parametrized by (γ, ξ) , let $L(d_i, \theta_{true}; \gamma, \xi)$ denote the consequence cost/regret/loss function that defines the total perceived loss as a

consequence of making the decision d_i when the true state of the structure is $\theta_{true}(t)$ at time t (see [1,2]). To obtain the benefit of an SHM system in the design phase, we require the following:

1. We need a probabilistic state-parameter evolution model (See [2]). Let $\Theta(t)$ denote a random variable representing the state-parameter at a time instance $t \in \Omega_T$. The prior state-parameter evolution model is then quantified by $f_{\Theta(t)}(\theta(t))$.
2. We need an inflation-adjusted cost function. The factor $(r(t)+1)^t$ adjusts for the future inflation, where $r(t)$ is the assumed future monthly rate of inflation at time t in months. We consider four types of costs:
 - **Cost A:** The inflation-adjusted consequence-cost of decision making at time t , denoted by $\tilde{L}(d_j, \theta_{true}(t), t; \gamma, \xi) = L(d_j, \theta_{true}(t); \gamma, \xi) \cdot (r(t)+1)^t$. The inspection and maintenance decisions are usually carried out at discrete time steps.
 - **Cost B and Cost C:** The maintenance (cost B) and operation (cost C) cost of the SHM system, denoted by $C_M(t) = C_M \cdot (r(t)+1)^t$ and $C_O(t) = C_O \cdot (r(t)+1)^t$ respectively. Here, C_M denotes the current estimated cost for one instance of maintenance of the system, and C_O denotes the currently estimated operation cost per month. We assume that the maintenance is done periodically.
 - **Cost D:** The cost of design and initial installation of an information gathering system $C(z)$. We assume this to be an initial cost and hence time-independent.

When new data/measurement $x_z(t) \in \Omega_{X_z(t)}$ is obtained, the state of the structure is updated by obtaining the posterior distribution of the state parameter, denoted by $f_{\Theta \vee X_z}(\theta \vee x_z)$, using Bayesian Inference (see [3]). The updated posterior state-parameter evolution model, denoted by $f_{\Theta(t) \vee X_z(t)}(\theta(t) | x_z(t))$, is obtained by using Bayesian inference utilizing the measurement data simulated by a finite element model that is assumed to be the ground truth.

The EVoI of the design z for a risk profile (γ, ξ) at a given time instance is defined as:

$$EVoI(z, t; \gamma, \xi) = C_{save}(z; \gamma, \xi) - C(z) \quad (1a)$$

$$C_{save}(z, t; \gamma, \xi) = E_{X_z(t)} \left[\min_{d_i} \tilde{L}(d_j, \theta_{true}(t), t; \gamma, \xi) \right] - \min_{d_i} E_{\Theta(t)} \left[\tilde{L}(d_j, \theta_{true}(t), t; \gamma, \xi) \right] \quad (1b)$$

Here, $C_{save}(z, t; \gamma, \xi)$ gives the expected cost saved by making a better decision based on newly acquired measurements through the mechanism z at time t for the risk profile (γ, ξ) . The EVoI over the life cycle for an SHM system z for the risk-profile (γ, ξ) , denoted by $EVoI_{LC}(z; \gamma, \xi)$, and the risk-adjusted reward, denoted by $\lambda_{LC}(z; \gamma, \xi)$ is then defined as (derived in Chadha et al. [3]):

$$EVoI_{LC}(z; \gamma, \xi) = C_{saveLC}(z; \gamma, \xi) - (C(z) + C_{M \wedge O}(z)) \quad (2a)$$

$$\lambda_{LC}(z; \gamma, \xi) = \frac{C_{saveLC}(z; \gamma, \xi)}{(C(z) + C_{M \wedge O}(z))} \quad (2b)$$

The quantity $C_{saveLC}(z; \gamma, \xi)$ denotes the expected savings over the lifecycle of the structure as a consequence of making data-informed decision making for the risk-profile (γ, ξ) , such that:

$$C_{saveLC}(z; \gamma, \xi) = \sum_{n=1}^{N_A} \left(\min_{d_i} E_{\Theta(t_{A_n})} \left[\tilde{L}(d_j, \theta_{true}(t_{A_n}), t_{A_n}; \gamma, \xi) \right] \right) - \sum_{n=1}^{N_A} \left(E_{X_z(t_{A_n})} \left[\min_{d_i} E_{\Theta(t_{A_n}) \vee X_z(t_{A_n})} \left[\tilde{L}(d_j \right. \right. \right. \quad (3)$$

An SHM system is feasible if it satisfies either of these equivalent conditions:

$$EVoI_{LC}(z) \geq 0, \vee \lambda_{LC}(z) \geq 1. \quad (4)$$

Among many SHM system designs, optimal designs z_{EVoI} and z_λ are obtained as:

$$z_{EVoI} = \arg \max_{z \in \Omega_z} EVoI_{LC}(z), \wedge z_\lambda = \arg \max_{z \in \Omega_z} \lambda_{LC}(z) \quad (5)$$

We obtain the optimal sensor design using $EVoI_{LC}(z)$ and $\lambda_{LC}(z)$ as the objective functional by deploying the Bayesian optimization algorithm described in Yang et al. [3].

APPLICATION TO MITER-GATES

Let the state of the miter gate be completely defined by the loss of boundary contact (or a ‘‘gap’’) between the gate and the concrete wall at the bottom of the gate, such that $\theta \in \Omega_\theta = \mathcal{I}$. Consider a binary decision-space $\Omega_D = \{d_0, d_1\}$, such that d_0 is a decision to not do specified maintenance and d_1 is a decision to perform some specified maintenance. Figure (1a) below shows the optimal sensor network design z_{EVoI} obtained using Eq. (5) and the optimization algorithm delineated in Yang et al. [3]. It was observed that the Bayesian algorithm picked two sensors close to the gap (encircled with red) leading to maximum $EVoI_{LC}(z_{EVoI})$. However, for comparison purposes, we consider the optimal design z_{EVoI} and the random design z_{random} to have 5 sensors. This shows that effectively, the optimal design would consist of a smaller number of sensors.

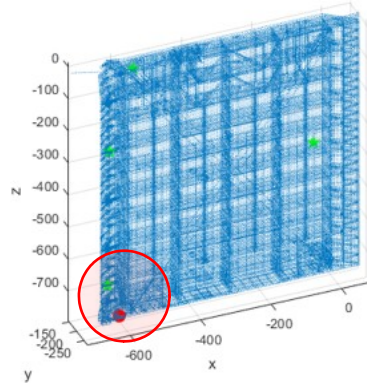


Fig 1a: Optimal sensor design z_{EVoI}

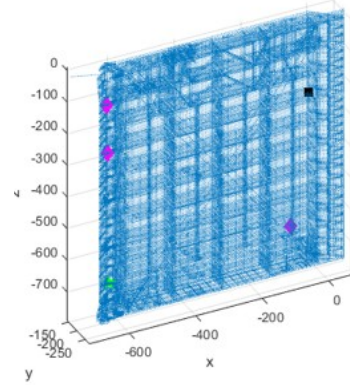


Fig 1b: Random design z_{random}

Fig 1: Miter-gate and the sensor network design considering conservative decision profile

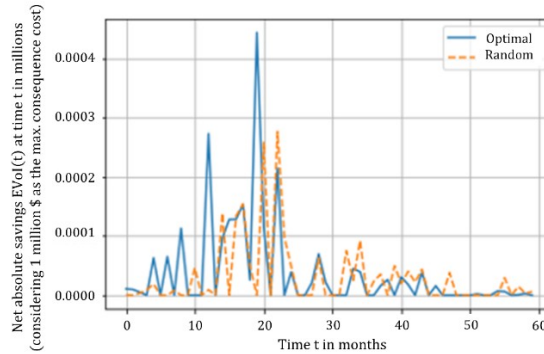


Fig 2: Comparison of $EVoI(z, t; \gamma, \xi)$ for optimal and random design at various time instances

We observe that the optimal sensor design leads to a higher Expected Value of Information at an intermediate time period (5-30 months). Beyond this time period, the structural damage is high enough that a conservative decision maker (the considered profile for the simulation) would recommend maintenance be carried out irrespective of the SHM design used to obtain the measurements. Therefore, for higher damage levels, decisions obtained using optimal design and random design are the same. The $EVoI(z, t; \gamma, \xi)$ is not smooth in Fig. (2) because lower particle numbers were used for Bayesian inference using the particle filter technique. This was done to reduce computational costs.

Conclusions:

This paper briefly details the mathematical formulation behind a sensor optimization framework that aims at maximizing the net cost saving over the lifecycle of the structure. The idea targets the core of an SHM system and attempts to come up with the most optimal data acquisition system design. This is currently ongoing research.

References:

- [1] Chadha, M., Ramancha M. K., Vega, M. A., Conte, J. P., Todd, M. D., “The role of risk profile in state determination of structures”, In proceedings 10th *International Conference on Structural Health Monitoring* (SHMII-10 conference), Porto, Portugal, June 30-July 2, 2021.
- [2] Chadha, M., Hu, Z., Todd, M. D., “An Alternative Quantification of the Value of Information in Structural Health Monitoring”, *Structural Health Monitoring: Value of Information perspective*, SAGE, 2021.
- [3] Yang, Y., Chadha, M., Hu, Z., Parno, M., Todd, M. D., “A probabilistic sensor design approach for structural health monitoring using risk-weighted f-divergence”, *Mechanical Systems and Signal Processing*, 2021.