



Crime In The City
(All You See |s)
Chamber Ensemble

Change
Request

Crime In The City (All You See Is)

Neal Gustafson

Lento

Flute

Effect Pedals

Clarinet in B \flat

Violoncello

Sound Effects

Percussion

Vibraphone

Piano

City Exterior

(swirl instrument around the microphone as to create breathes of echos)

reverse efx.

(gong: bowed)

(bowed)

(tymp. mal.)

l.v.

sim.

pp

p

pp

pp

mp

mp

g^{rb}

λ_{od}

6

Fl.

Ped.

Cl.

Vc.

Efx.

Perc.

Vib.

Pno.

8vb

8vb

Detailed description: This page of a musical score, numbered '2' at the top left and '6' at the top of the first staff, contains eight staves. The staves are labeled as follows: Fl. (Flute), Ped. (Pedal), Cl. (Clarinet), Vc. (Violoncello), Efx. (Effects), Perc. (Percussion), Vib. (Vibraphone), and Pno. (Piano). The Fl., Cl., and Vib. staves feature melodic lines with various articulations such as accents, slurs, and dynamic markings. The Ped., Vc., and Pno. staves contain sustained notes with slurs and dynamic markings. The Efx. and Perc. staves are empty, indicating no activity for these instruments in this section. The Pno. part includes two instances of an 8va (octave up) marking, indicated by a '+' sign and a dashed line.

A

a Tempo

11

Fl.

Musical staff for Flute (Fl.) showing a melodic line with a slur and a fermata over a half note. Below the staff are dynamic markings: > (accent), < (decrescendo), and > (crescendo).

Ped.

Musical staff for Pedal (Ped.) showing a sustained pedal point with a slur and a fermata over a half note. Below the staff are dynamic markings: > (accent), < (decrescendo), and > (crescendo).

Cl.

Musical staff for Clarinet (Cl.) showing a melodic line with a slur and a fermata over a half note. Below the staff are dynamic markings: > (accent), < (decrescendo), and > (crescendo).

Vc.

Musical staff for Violoncello (Vc.) showing a melodic line with a slur and a fermata over a half note. Below the staff are dynamic markings: > (accent), < (decrescendo), and > (crescendo).

Efx.

Musical staff for Effects (Efx.) showing a sustained effect with a slur and a fermata over a half note. Below the staff are dynamic markings: > (accent), < (decrescendo), and > (crescendo).

Radio Scanner:
use effects a piacere

Perc.

Musical staff for Percussion (Perc.) showing a rhythmic pattern with a slur and a fermata over a half note.

Vib.

Musical staff for Vibraphone (Vib.) showing a melodic line with a slur and a fermata over a half note. Below the staff are dynamic markings: > (accent), < (decrescendo), and > (crescendo).

A

a Tempo

Pno.

Musical staff for Piano (Pno.) showing a complex piano accompaniment with triplets and slurs. Includes dynamic markings: mp (mezzo-piano), and performance instructions: Red. (Reduction), * (Crescendo), and Red. (Reduction).

8vb

*

B

15 Rit.

a Tempo

Fl.

Musical notation for Flute (Fl.) in treble clef. It features a melodic line with slurs and accents. Dynamics include *p* and hairpins for crescendo and decrescendo.

Ped.

Musical notation for Pedal (Ped.) in bass clef. It shows a sustained note with a fermata and a series of 'o' marks above it. The label 'echo efx.' is present below the staff.

Cl.

Musical notation for Clarinet (Cl.) in treble clef. It features a melodic line with slurs and accents. Dynamics include *p* and hairpins for crescendo and decrescendo.

Vc.

Musical notation for Violin (Vc.) in bass clef. It shows a sustained note with a fermata. The dynamic *ppp* is indicated below the staff.

Efx.

Musical notation for Effects (Efx.) in bass clef. It shows a sustained note with a fermata.

Perc.

Musical notation for Percussion (Perc.) in bass clef. It shows a sustained note with a fermata. The label '(sus. cym.)' is above the staff, and the dynamic *ppp* is below.

Vib.

Musical notation for Viola (Vib.) in treble clef. It shows a sustained note with a fermata. The label '(bowed)' is above the staff.

B

Rit.

a Tempo

Pno.

Musical notation for Piano (Pno.) in grand staff. The right hand has a melodic line with slurs and accents, and the left hand has a bass line. Dynamics include *mf* and *p*. A fermata is present over the final notes.

Subito Andante

Fl.

Ped.

Cl.

Vc.

Efx.

Perc.

Vib.

Pno.

(gong: soft mal.)

p *mp* *mp*

23

Rit.

Fl.



Ped.



Cl.



Vc.



Efx.



Perc.



Vib.



Pno.

The piano score consists of two staves. The upper staff is in treble clef and the lower staff is in bass clef. The music begins with a series of notes and rests, marked with an asterisk (*). A **Rit.** (Ritardando) marking is placed above the upper staff. The score includes various note values, rests, and dynamic markings such as *p* (piano) and *(sus cym)* (sustained cymbal). The piece concludes with a final chord in the upper staff.

(sus cym)

p

Rit.

*

Rit.

D**Largo Chorale Grave**

25

Fl. *mp*

Ped.

Cl. *mp*

Vc. *mp*

Efx.

Perc. (cup gongs: bowed)

Vib. *p* *p*

D

Largo Chorale Grave

Pno. (timp. mal.) *mf* *mp* l.v. + +

8vb *8vb*

30

Rit.

Fl.

Ped.

Cl.

Vc.

Efx.

Perc.

Vib.

Rit.

Pno.

E

35

Adagio Rubato

Poco Accel.

Molto Accel.

Fl.

Ped.

Cl.

Vc.

Efx.

Perc.

Vib.

(crotales: bowed)

E

espressivo rubato
(con arrps., pedalings, accents, and dynamic nuances) a piacere

Adagio Rubato

Poco Accel.

Molto Accel.

Pno.

mf

8vb

*

F

39 **Rit.**

a Tempo

Fl. *pp* < > < > < > < > < > < >

Ped. long echo efx.

Cl. *pp* < > < > < > < > < > < >

Vc. *pp* < > < > < > < > < > < >

Efx.

Perc. (sus cym)
ppp

Vib.

F

Rit.

a Tempo

Pno. *mp* *mp* *mf*

43

Poco Accel.

This musical score page features eight staves for different instruments. The Flute (Fl.), Pedagogical (Ped.), Clarinet (Cl.), and Violoncello (Vc.) staves are currently empty. The Eufonia (Efx.) staff contains three measures of music, each consisting of a whole note chord with a fermata. The Percussion (Perc.) staff is empty. The Vibraphone (Vib.) staff contains three measures of music, each consisting of a whole note chord with a fermata. The Piano (Pno.) staff is the most active, containing three measures of music. The first measure has a piano dynamic marking. The second measure is marked **Poco Accel.** and features a complex rhythmic pattern with sixteenth notes and chords. The third measure continues this pattern with a fermata over the final chord. The piano part includes various dynamics, including a crescendo hairpin.

G

46 **Molto Accel.**

Rit.

a Tempo

Fl.

Musical notation for the Flute part, starting with a treble clef. The staff contains a series of eighth notes with slurs, transitioning from a natural key signature to a key with one sharp (F#). Dynamics include *pp* and hairpins indicating volume changes.

Ped.

Musical notation for the Pedal part, starting with a bass clef. It features long, sustained notes with a wavy line above the first measure. The annotation "long echo efx." is placed below the staff.

Cl.

Musical notation for the Clarinet part, starting with a treble clef. It contains eighth notes with slurs, similar to the flute part, with a key signature change and *pp* dynamics.

Vc.

Musical notation for the Violin part, starting with a bass clef. It features eighth notes with slurs, mirroring the flute and clarinet parts, with a key signature change and *pp* dynamics.

Efx.

Musical notation for the Effects part, starting with a bass clef. It shows long, sustained notes with a wavy line above, similar to the pedal part.

Perc.

Musical notation for the Percussion part, starting with a bass clef. It includes a cymbal roll marked "(sus cym)" and a *ppp* dynamic.

Vib.

Musical notation for the Vibraphone part, starting with a treble clef. It features long, sustained notes with a wavy line above, similar to the pedal and effects parts.

G

Molto Accel.

Rit.

a Tempo

Pno.

Musical notation for the Piano part, consisting of two staves (treble and bass clefs). It features chords and moving lines, with dynamics *mp* and *mf*.

50 **Poco Accel.**

Rit.

Fl.

Ped.

Cl.

Vc.

Efx.

Perc.

Vib.

Poco Accel.

Rit.

Pno.

H

53 **Molto Rit.**

Fl. *pp*

Ped. *long echo efx.*

Cl. *pp*

Vc. *pp*

Efx.

Perc. (sus cym)

Vib.

H

Molto Rit.

Pno. *pp*

I

58 **Cadenza Rubato**

Fl. $\frac{4}{4}$ $\frac{2}{4}$ $\frac{4}{4}$

Ped. $\frac{4}{4}$ $\frac{2}{4}$ $\frac{4}{4}$

Cl. $\frac{4}{4}$ $\frac{2}{4}$ $\frac{4}{4}$

Vc. $\frac{4}{4}$ $\frac{2}{4}$ $\frac{4}{4}$

Efx. $\frac{4}{4}$ $\frac{2}{4}$ $\frac{4}{4}$

Perc. $\frac{4}{4}$ $\frac{2}{4}$ $\frac{4}{4}$

Vib. $\frac{4}{4}$ $\frac{2}{4}$ $\frac{4}{4}$

stringendo rubato
(con arpps., pedalings, accents, and dynamic nuances) a piacere

I

Cadenza Rubato

Pno. $\frac{4}{4}$ $\frac{2}{4}$ $\frac{4}{4}$

mf

61

Fl. $\frac{4}{4}$

Ped. $\frac{4}{4}$

Cl. $\frac{4}{4}$

Vc. $\frac{4}{4}$

Efx. $\frac{4}{4}$

Perc. $\frac{4}{4}$

Vib. $\frac{4}{4}$

Pno. $\frac{4}{4}$

63

Stringendo

Fl.

A single musical staff for the Flute (Fl.) instrument, currently empty.

Ped.

A single musical staff for the Pedal (Ped.) instrument, currently empty.

Cl.

A single musical staff for the Clarinet (Cl.) instrument, currently empty.

Vc.

A single musical staff for the Violoncello (Vc.) instrument, currently empty.

Efx.

A musical staff for Effects (Efx.) with two staves. It contains two long, horizontal lines with small square markers at the beginning and end, indicating sustained effects.

Perc.

A single musical staff for Percussion (Perc.), currently empty.

Vib.

A musical staff for Vibraphone (Vib.) with two staves. It contains two long, horizontal lines with small square markers at the beginning and end, indicating sustained effects.

Pno.

A musical staff for Piano (Pno.) with two staves. The right hand contains a melodic line with eighth and sixteenth notes, and the left hand contains a bass line with chords and single notes. The word **Stringendo** is written above the staff.

Stringendo

65

This musical score page, numbered 18, contains measures 65 and 66. The score is arranged in a grand staff with the following parts from top to bottom: Flute (Fl.), Pedal (Ped.), Clarinet (Cl.), Violoncello (Vc.), Efx., Percussion (Perc.), Vibraphone (Vib.), and Piano (Pno.). The time signature is 2/4. The Flute, Clarinet, and Vibraphone parts are mostly blank, with only a few notes and rests visible. The Piano part is the most active, featuring a complex melodic line in the right hand and a harmonic accompaniment in the left hand. The Efx. and Perc. parts are also blank, with only a few notes and rests visible. The Vib. part has a few notes and rests visible. The Fl. part has a few notes and rests visible. The Ped. part has a few notes and rests visible. The Vc. part has a few notes and rests visible.

67

Fl. $\frac{2}{4}$

Ped. $\frac{2}{4}$

Cl. $\frac{2}{4}$

Vc. $\frac{2}{4}$

Efx. $\frac{2}{4}$

Perc. $\frac{2}{4}$

Vib. $\frac{2}{4}$

Pno. $\frac{2}{4}$

f

Detailed description: This page of a musical score covers measures 67 to 70. It features eight staves: Flute (Fl.), Pedal (Ped.), Clarinet (Cl.), Violoncello (Vc.), Effects (Efx.), Percussion (Perc.), Vibraphone (Vib.), and Piano (Pno.). The Flute, Pedal, Clarinet, and Violoncello staves are mostly empty, with a final measure containing a 4/4 time signature. The Effects, Percussion, and Vibraphone staves also have a final measure with a 4/4 time signature. The Piano part is the most active, starting in 2/4 time and transitioning to 4/4. It features a complex rhythmic pattern with triplets and sixteenth notes, marked with a forte (*f*) dynamic. The score includes various musical notations such as slurs, accents, and dynamic markings.

69

J

Lamente

(panting)

pp

Fl.

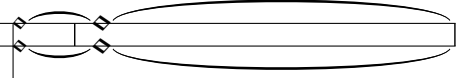


Ped.



oooo

reverse efx.



Cl.



(panting)

pp



Vc.



(panting)

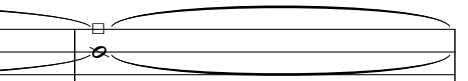
pp



Efx.



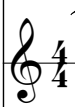
pp



Perc.



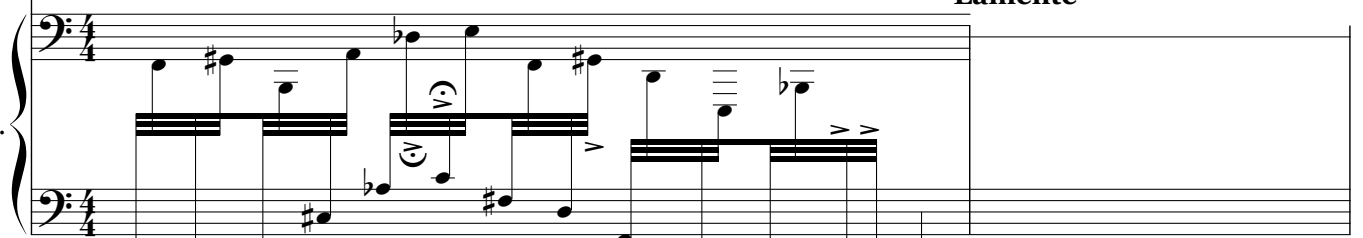
Vib.



J

Lamente

Pno.



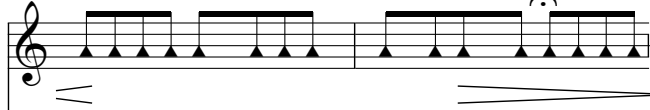
ff

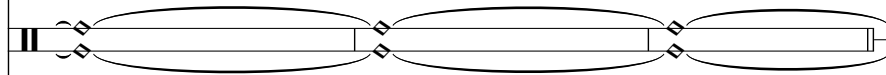
ped.

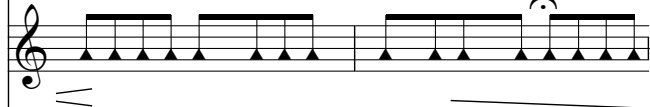


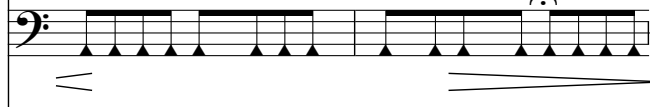
Largo Chorale Grave

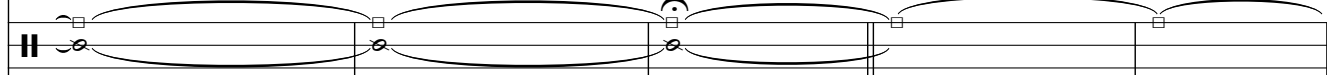
71


Fl. 

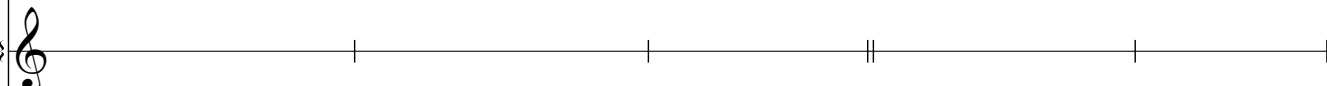
Ped. 

Cl. 

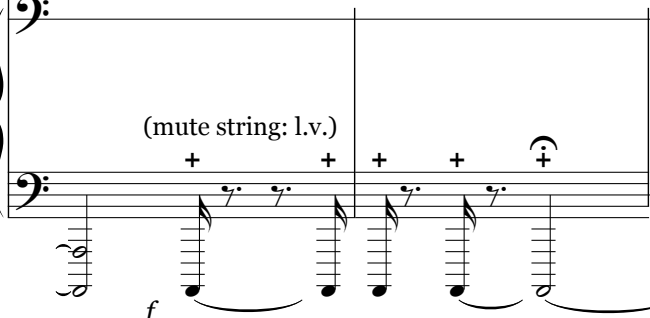
Vc. 

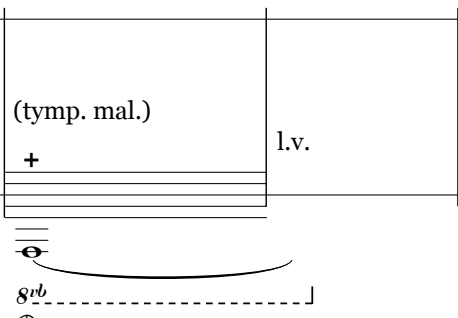
Efx. 


Perc. 

Vib. 

Largo Chorale Grave

Pno. 





76

Fl.

Ped.

Cl.

Vc.

Efx.

Perc.

Vib.

Pno.

8vb

L

81 **Rit.**

Subito Andante

Fl.

Ped.

Cl.

Vc.

Efx.

Perc.

Vib.

Subito Andante

L

Rit.

Pno.

(8) - |

8vb Ped mp

*

84

Rit.

Fl.



Ped.



Cl.



Vc.



Efx.



Perc.



Vib.



Pno.

Rit.

The piano score consists of two staves. The right hand (treble clef) features a melodic line with a slur over the final two measures. The left hand (bass clef) has a rhythmic accompaniment with eighth notes and rests. Dynamics include *mf* at the end of the piece. There are asterisks (*) under the first and last measures of the left hand. A *Rit.* marking is placed above the second measure of the right hand.

(sus cym)

p

p

mf

N

a Tempo

91

Fl.

Ped.

Cl.

Vc.

Efx.

Perc.

Vib.

Pno.

mp

(gong: soft mal.)

mp

mp

Red.

3

*

94

Rit.

Fl.



Ped.



Cl.



Vc.



Efx.



Perc.



Vib.



Pno.

Rit.

The piano score consists of two staves. The right hand features a melodic line with accents and slurs, including a triplet of eighth notes and a sextuplet of eighth notes. The left hand provides harmonic support with slurs and a triplet of eighth notes. Dynamics include *mf*. Performance markings include a triplet '3', a sextuplet '6', and an asterisk '*'. A 'Ped.' marking is present at the beginning of the first measure.

(sus. cym.)

ppp



97 **a Tempo**

Fl.

Ped.

(swirl instrument around the microphone as to create breathes of echos)

Cl.

Vc.

Efx.

Perc.

Vib.

(bowed)



a Tempo

Pno.

(t ymp. mal.)

mp

8vb

Red.

102

This page of a musical score, numbered 102, features eight staves for different instruments. The Flute (Fl.), Clarinet (Cl.), Violoncello (Vc.), and Vibraphone (Vib.) parts are written in treble clef, while the Violoncello (Vc.) part is in bass clef. The Piano (Pno.) part is written in grand staff (treble and bass clefs). The Efx. and Perc. staves are empty. The Flute, Clarinet, and Violoncello parts consist of a series of notes with slurs and dynamic markings. The Piano part includes a bass line with a '+' sign and an 8va marking. The Vibraphone part has a similar melodic line to the Flute. The Pedal part is represented by a series of oval shapes. The Efx. and Perc. staves are empty.

106

Fl.

Ped.

Cl.

Vc.

Efx.

Perc.

Vib.

Pno.

(gong: bowed)

+

8^{vb}