

UC San Diego

UC San Diego Previously Published Works

Title

Visualization of oxygen distribution patterns caused by coral and algae

Permalink

<https://escholarship.org/uc/item/2qt021fj>

Journal

PeerJ, 1(1)

ISSN

2167-8359

Authors

Haas, Andreas F
Gregg, Allison K
Smith, Jennifer E
[et al.](#)

Publication Date

2013

DOI

10.7717/peerj.106

Peer reviewed

Visualization of oxygen distribution patterns caused by coral and algae

Andreas F. Haas^{1,2,4}, Allison K. Gregg^{1,4}, Jennifer E. Smith²,
Maria L. Abieri^{1,3}, Mark Hatay¹ and Forest Rohwer¹

¹ Department of Biology, San Diego State University, United States

² Scripps Institution of Oceanography, University of California, San Diego, United States

³ Institute of Biology, Department of Marine Biology, Federal University of Rio de Janeiro, Brazil

⁴ These authors contributed equally to this work.

ABSTRACT

Planar optodes were used to visualize oxygen distribution patterns associated with a coral reef associated green algae (*Chaetomorpha* sp.) and a hermatypic coral (*Favia* sp.) separately, as standalone organisms, and placed in close proximity mimicking coral-algal interactions. Oxygen patterns were assessed in light and dark conditions and under varying flow regimes. The images show discrete high oxygen concentration regions above the organisms during lighted periods and low oxygen in the dark. Size and orientation of these areas were dependent on flow regime. For corals and algae in close proximity the 2D optodes show areas of extremely low oxygen concentration at the interaction interfaces under both dark ($18.4 \pm 7.7 \mu\text{mol O}_2 \text{ L}^{-1}$) and daylight ($97.9 \pm 27.5 \mu\text{mol O}_2 \text{ L}^{-1}$) conditions. These images present the first two-dimensional visualization of oxygen gradients generated by benthic reef algae and corals under varying flow conditions and provide a 2D depiction of previously observed hypoxic zones at coral algae interfaces. This approach allows for visualization of locally confined, distinctive alterations of oxygen concentrations facilitated by benthic organisms and provides compelling evidence for hypoxic conditions at coral-algae interaction zones.

Subjects Ecology, Marine Biology

Keywords Planar optode, Dissolved oxygen, Interaction, Algae, Coral, Two dimensional visualization

INTRODUCTION

Reef building corals and macroalgae can both act as ecosystem engineers by physically and chemically altering their environment (Jones, Lawton & Shachak, 1994; Wild et al., 2004) but they do so in different ways (Wild et al., 2010; Haas et al., 2011). One of the key water column parameters affected by both of these organismal groups (and many others) is oxygen availability (Wild et al., 2010; Niggel, Haas & Wild, 2010). Dissolved oxygen concentrations in the reef water column can vary by more than 50% between daylight hours with active benthic photosynthesis and night, where respiration by the reef community results in net oxygen consumption (Niggel, Haas & Wild, 2010; Haas et al., 2010).

Many studies have investigated variation in oxygen concentrations in different marine environments and on different scales. While some studies have targeted small scale oxygen changes in boundary layers (de Beer et al., 1994; Larkum, Koch & Kühl, 2003), coral

Submitted 30 April 2013

Accepted 25 June 2013

Published 16 July 2013

Corresponding author

Andreas F. Haas,
andreas.florian.haas@gmail.com

Academic editor
Fabiano Thompson

Additional Information and
Declarations can be found on
page 9

DOI 10.7717/peerj.106

© Copyright
2013 Haas et al.

Distributed under
Creative Commons CC-BY 3.0

OPEN ACCESS

interstices (Shashar, Cohen & Loya, 1993; Kühl *et al.*, 1995), and coral-algal interaction interfaces (Smith *et al.*, 2006; Barott *et al.*, 2009), others have examined whole reef areas (Middleton *et al.*, 1994; Niggel, Haas & Wild, 2010) or even influences of warming on dissolved oxygen concentrations in oceans around the world (Stramma *et al.*, 2010). All of these studies assessed changes in oxygen concentrations by point measurements with varying spatial and temporal resolution across a gradient or grid. Water column oxygen concentrations are clearly not static and are going to vary across space and over time due to biological processes and hydrodynamics (Rasheed *et al.*, 2004). This variability makes it difficult to understand how individual organisms or communities affect or are affected by oxygen concentrations on coral reefs.

Planar oxygen optodes have been used to resolve oxygen dynamics in a variety of complex benthic environments such as animal burrows (Volkenborn *et al.*, 2010), marine plant root systems (Frederiksen & Glud, 2006), permeable sands (Polerecky *et al.*, 2005), and even in endolithic algal communities within coral holobionts (Kühl *et al.*, 2008). These optodes function via a luminescent indicator that is differentially quenched in the presence of oxygen, which allows for the two-dimensional visualization of oxygen distribution patterns (Holst *et al.*, 1998; Oguri, Kitazato & Glud, 2006). However, planar optodes have never been used to investigate oxygen distribution patterns in the water column, and until now have not been used for *in situ* measurements. In the present study we used a planar optode system (Larsen *et al.*, 2011), modified for *in situ* applications (AK Gregg, unpublished data), to visualize the two-dimensional oxygen concentrations patterns generated by coral reef associated macroalgae and corals separately and in close proximity to one another. This allows for the assessment of the influence of the respective organisms on DO concentration, and the potential variation resulting from competition/interaction processes on oxygen distribution patterns in the surrounding water column.

MATERIAL AND METHODS

Experimental setup

Oxygen distribution patterns facilitated by independent coral and algal samples and samples of each taxon placed in close proximity to one another (mimicking coral-algae interactions), were assessed under flow and no-flow conditions. To generate unidirectional flow a flow chamber was constructed from clear acrylic with inner dimensions of $16 \times 16 \times 50$ cm. The flow chamber was constantly supplied with filtered (nominal pore size $50 \mu\text{m}$) and temperature controlled ($26.3 \pm 0.4^\circ\text{C}$) seawater. Flow rates were adjusted to the desired flow regime by controlling the water supply to the chamber. Flow rates were calculated by determining the water quantity passing through the chamber and visually verified by tracking the passage of neutrally buoyant particles through the chamber. Temperature was recorded every minute by an Onset HOBO[®] Pendant UA-002-64 temperature logger throughout the duration of each experiment.

Algae (*Chaetomorpha* sp.) and coral (*Favia* sp.) specimens used in this experiment were provided by the Birch Aquarium at Scripps Institution of Oceanography. Corals were mounted with coral cement (Instant Ocean, Holdfast[®] Epoxy Stick) and algae were fixed

with zip ties to identical ceramic tiles ($5.0 \times 5.0 \times 0.5$ cm) that fit exactly in a cut out square on the bottom of the flow chamber to prevent turbulence generated by the ceramic tile base. Specimens were acclimated for at least 48 h in a cultivation tank with temperature controlled ($\text{Temp} = 26.1 \pm 0.5^\circ\text{C}$) flow through seawater to recover from handling as described above.

For each experimental run ($n = 3$ for each “run”) the tile-attached organisms were placed in the designated notch of the flow chamber and an optode sheet ($16 \times 16 \times 30$ cm) was placed in a vertical plane over them (Fig. 1A). All samples were exposed to four different treatments, comprising artificial daylight and dark conditions in a non-moving water body and under flow rates of ~ 5 cm s^{-1} at distances of >5 cm from chamber walls. Artificial light was provided by 2×54 W 6000 K Aquablue+, 1×54 W 6000 K Middy, and 1×54 W Actinic+ aquarium lights (Geismann, Germany), mounted 80 cm above the experimental chambers resulting in photosynthetic active radiation of $160 \mu\text{mol quanta m}^{-2} \text{s}^{-1}$ as measured by a LI-COR LI-193 Spherical Quantum Sensor. Samples were incubated for at least 3 h in the respective experimental conditions and pictures of the planar optodes were captured every 30 min. To verify oxygen concentrations patterns visualized by the optodes, 3 hand-held LBOD101 luminescent oxygen meters (Hach Lange, Germany, precision 0.01 mg l^{-1} , accuracy $\pm 0.05\%$) were mounted in control setups, in- and outside of the expected oxygen plumes as reference (deviation was always $<5\%$).

Planar optode images

Camera and light settings – Images of planar optodes (Fig. 1B) were taken visualize oxygen concentrations in two-dimensions along the optode sheet (modified from [Larsen et al., 2011](#)). Planar oxygen optodes were photographed using a G11 (Canon, USA) placed at a distance of ~ 25 cm from the flow chamber; images were captured in RAW format. All photographs were taken with identical settings of ISO 200, $f/8$ and shutter speed of 1.3 s.

Four Rebel Royal Blue light emitting diodes (LED) with a λ -peak of 445 nm (Phillips-Luxeon, Canada) were used as the excitation source in combination with a 470 nm short pass filter (UQG Optics, UK). To prevent the excitation source from contaminating the luminescent signal, a Schott 530 nm long pass filter (UQG Optics, UK) was mounted on the camera lens. All images were taken in the absence of ambient light.

Oxygen planar optodes

The oxygen sensitive optical indicator platinum (II) octaethylporphyrin (PtOEP) was used in combination with the coumarin antenna dye macrolex[®] fluorescence yellow 10GN (MY) (for details see [Larsen et al., 2011](#)). The luminescence of PtOEP, with a peak wavelength of 650 nm, is quenched in the presence of oxygen and its intensity therefore dependent on the oxygen concentration, whereas the MY emission intensity, with a peak wavelength of 515 nm, remains unaffected by oxygen concentrations and is therefore constant. In this system, only part of the excitation energy collected by the antenna is transferred to the indicator dye ([Mayr et al., 2009](#)) and the remaining energy is emitted from the antenna dye itself, thereby acting as an internal reference ([Larsen et al., 2011](#)). Absolute oxygen concentrations can therefore be calculated using the ratio of red pixel

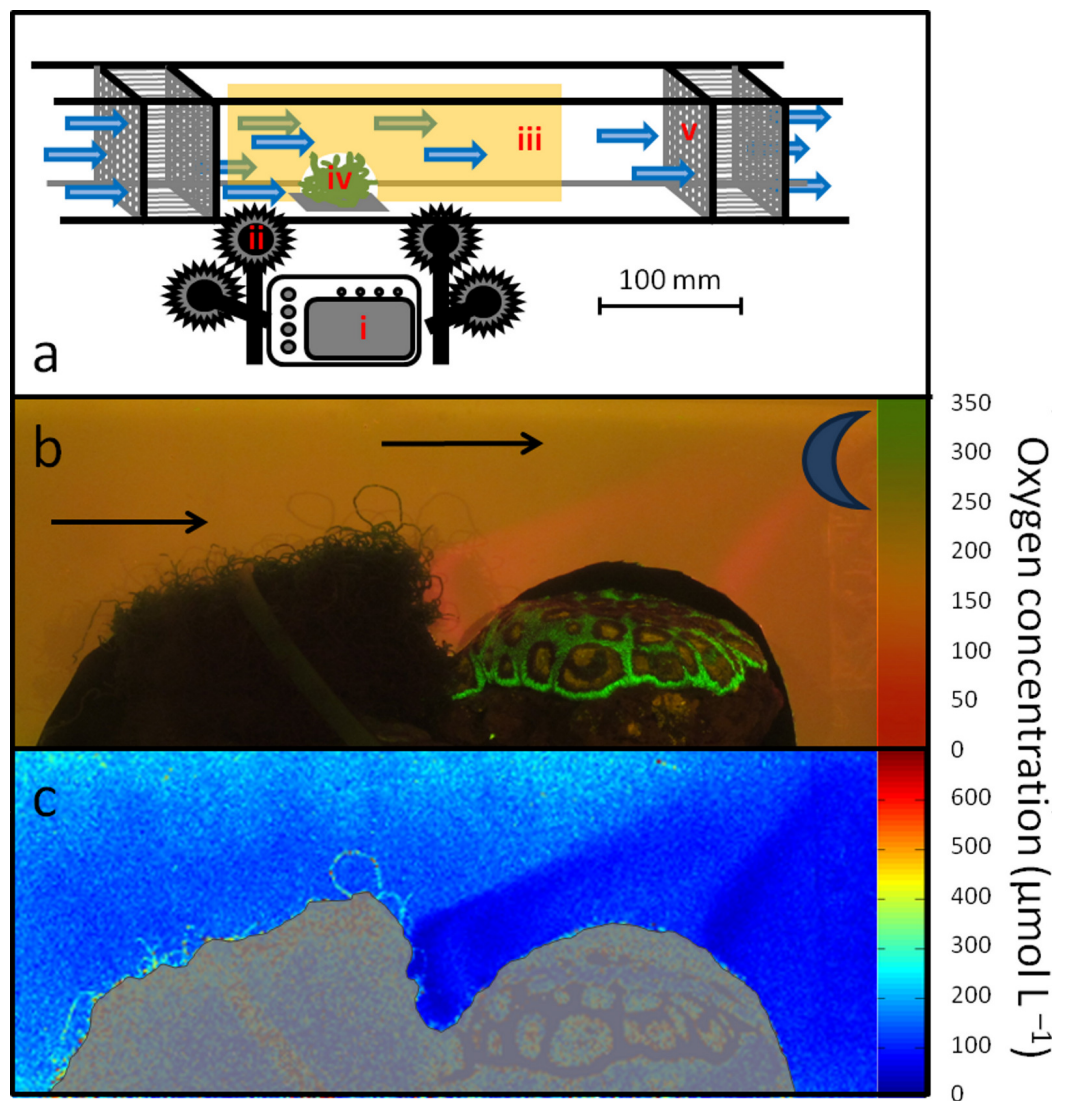


Figure 1 Experimental setup. (A) Flow chamber: (i) Canon D10 camera equipped with Schott 530 nm long pass filter (ii) 445 nm LED with a 470 nm Blue Dichroic short pass filter (iii) Planar oxygen optode, mounted in vertical plane over (iv) benthic organism(s) (v) Diffuser to create consistent laminar water flow. (B) Example of a picture taken to visualize oxygen distribution generated by algae and coral in close proximity, subjected to flow conditions (indicated by arrows) during dark incubation (indicated by moon). Oxygen scale represents approximate values. (C) Plot of dissolved oxygen concentrations at 26.0°C as seen in Fig. 1B; analyzed in MATLAB. Oxygen scale represents exact values. Grayscale represents coral and algae specimens; not representative of oxygen concentration.

intensity (oxygen-dependent dye) to green pixel intensity (oxygen-independent dye). Optode sheets were prepared using 0.04% (w/v) of both PtOEP and MY, along with 4% (wt/vol) polystyrene, dissolved in chloroform (Larsen *et al.*, 2011), and spread onto 0.125 mm thick PET film (GoodfellowUSA, USA). The final thickness of the optode sheet was approximately 10 microns. The sheets were then cut to fit in the vertical plane of the flow chamber, leaving a 6 cm wide semicircle cut-out for the biological samples.

Image analysis

The RAW images were imported into the image-processing program RawHide (v0.88.001, My-Spot Software, USA). Resulting pixel size for TIFF images was 3.1 megapixels. Each RAW file was converted into three 16-bit TIFF images (i.e. red, averaged green and blue color channel). The pixel information from the red and green channel images were imported into MATLAB and further analyzed using the image toolbox (Fig. 1C, Supplemental Information 1). The red and green intensity values (0–65,536 for a 16-bit image) were obtained for each pixel and used to calculate the pixel intensity ratio (R) (Eq. (1)). The resulting ratios were used in the modified Stern-Volmer equation (Klimant, Meyer & Kühn, 1995), where α is the unquenched portion of the indicator, R_0 is the ratio at anoxia, C is the concentration of oxygen and K_{sv} is the Stern-Volmer constant.

$$R = \frac{\text{intensity of red} - \text{intensity of green}}{\text{intensity of green}} \quad (1)$$

$$\frac{R}{R_0} = \left[\alpha + (1 - \alpha) \left(\frac{1}{1 + K_{sv} \cdot C} \right) \right] \quad (2)$$

To establish the constants necessary to calculate absolute oxygen concentrations, a calibration of each optode sheet under identical temperature conditions was performed prior to the experiment. Each optode sheet was calibrated by taking images at known oxygen concentrations. Filtered and temperature controlled seawater was doused with nitrogen gas to obtain 8 different concentrations of oxygen ranging from 100% air-saturation to anoxia. Starting concentrations were approximately 250 μM oxygen and an image was taken at approximately every 30 μM step until the seawater was anoxic. The resulting oxygen concentrations were constantly measured for comparison using an LBOD101 luminescent oxygen probe. From this calibration, we determined our values for α and K_{sv} for each respective optode (Eq. (2), example given in Fig. S1) using a non-linear regression (Prism version 5, R version 2.13.2). Regression curves are included in Fig. S1. If not further specified, values are given as mean \pm standard error (SE).

RESULTS AND DISCUSSION

Here we visualized two-dimensional oxygen distribution patterns generated by distinct functional groups of coral reef associated ecosystem engineers using planar optodes. Analyses of the images revealed discrete regions of oxygen concentration changes in their surrounding water column. Oxygen concentrations in the surrounding water columns were comparable between light ($161.8 \pm 10.4 \mu\text{mol O}_2 \text{ L}^{-1}$) and dark incubations ($164.5 \pm 13.5 \mu\text{mol O}_2 \text{ L}^{-1}$). Measurements showed that during daylight hours, and with no flow, oxygen concentrations were elevated by 91–210 $\mu\text{mol O}_2 \text{ L}^{-1}$ in the water overlying the algae (Fig. 2A) and 19–149 $\mu\text{mol O}_2 \text{ L}^{-1}$ above the investigated coral (Fig. 2B). Maximum oxygen concentrations ($\sim 400 \mu\text{mol O}_2 \text{ L}^{-1}$) were considerably above ($\sim 200\%$ oxygen saturation) the seawater saturation limit in these oxygen plumes. Oxygen concentration visualization in the non-flow water conditions showed minimal lateral influences of the biological samples on the water column next to them. The released oxygen rapidly rose to

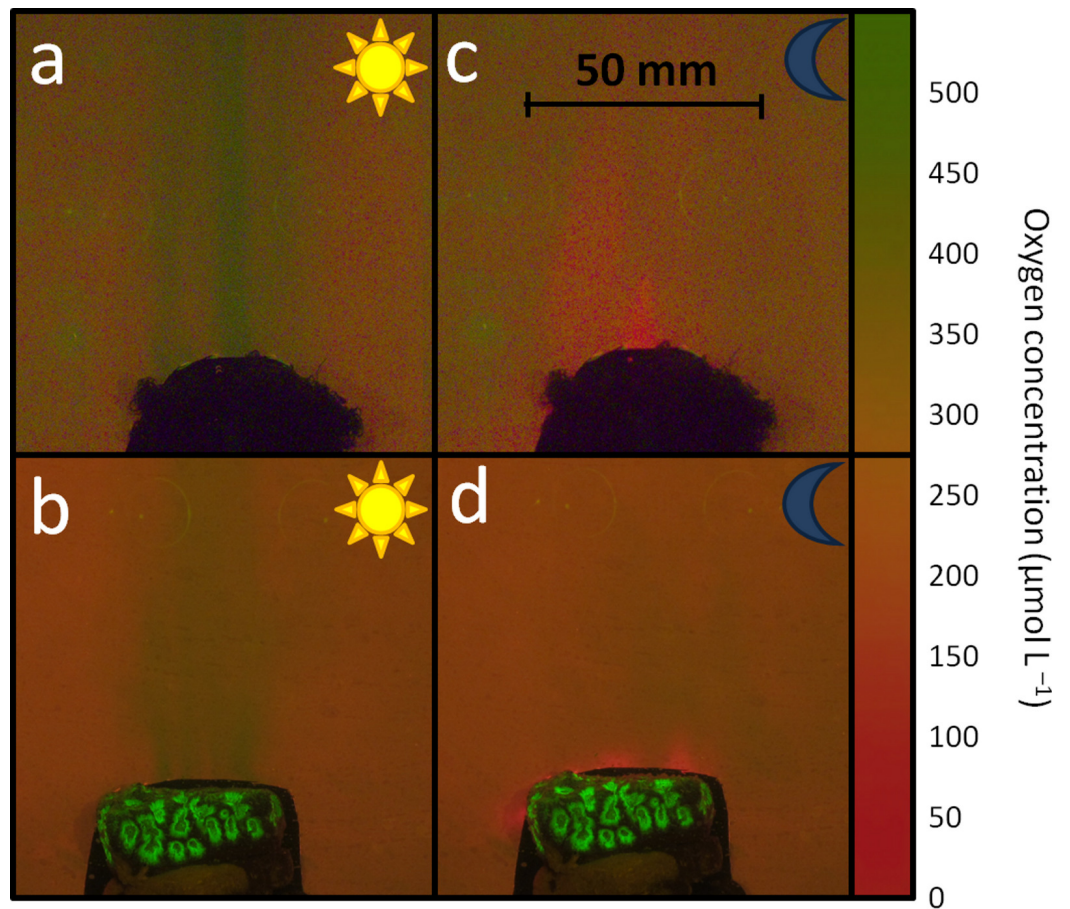


Figure 2 Oxygen patterns over coral and algae during light and dark. Examples of pictures taken of planar optodes mounted over algae (A, C) and corals (B, D) subjected to no-flow conditions during artificial daylight (A, B) and dark (C, D) incubations (indicated by sun and moon icons). Note the plumes of oxygen (green signal) rising from the organisms. Oxygen scale represents approximate values.

the surface, suggesting that under low flow conditions (e.g., ebb tide) a major part of the oxygen produced, may not necessarily be available to the surrounding benthic community but is rather shunted vertically through the water column. This visible phenomenon was more pronounced in the water column overlying algae than that of the corals (oxygen concentration difference between inside and outside the plumes for algae: $148.3 \pm 24.7 \mu\text{mol O}_2 \text{ L}^{-1}$ and coral: $66.7 \pm 30.7 \mu\text{mol O}_2 \text{ L}^{-1}$ standalone treatments).

Organismal respiration generated reverse patterns of oxygen distribution during dark conditions. Concentration differences were in the same range ($77\text{--}107 \mu\text{mol O}_2 \text{ L}^{-1}$ for corals and $34\text{--}160 \mu\text{mol O}_2 \text{ L}^{-1}$ for algae), but spatially more confined and with less pronounced vertical patterns (Figs. 2C and 2D). Minimum oxygen concentrations of $79.8 \pm 16.4 \mu\text{mol O}_2 \text{ L}^{-1}$ for algae and $70.4 \pm 13.1 \mu\text{mol O}_2 \text{ L}^{-1}$ for corals were detectable within 5–10 mm of the organisms. There were no noticeable differences in the distribution patterns of low oxygen zones facilitated by standalone coral and benthic algae during dark conditions.

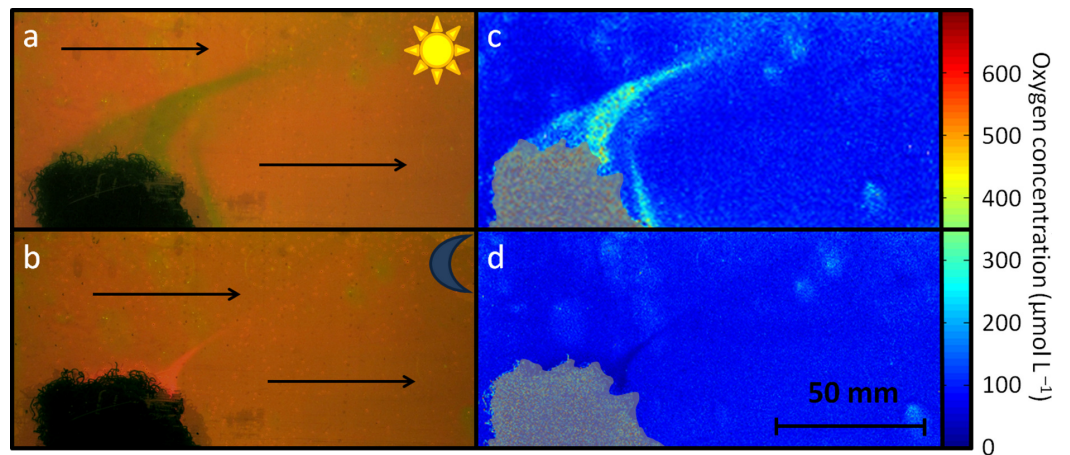


Figure 3 Algae generated oxygen patterns under flow conditions. Photographic visualization of 2-dimensional oxygen distribution patterns around algae in under flow conditions during daylight (A) and dark (B) conditions (indicated by sun and moon icons). Arrows indicate direction of water movement. (C, D) MATLAB processed Plot of dissolved oxygen concentrations at 26.0°C as seen in corresponding pictures A and B. Oxygen scale represents exact values. Grayscale represents coral and algae specimens; not representative of oxygen concentration.

Water flow of $\sim 5 \text{ cm s}^{-1}$, simulating flow regimes in ranges which can be found *in situ* in back reef environments (Hench, Leichter & Monismith, 2008), decreased intensity and changed the direction of the plumes (Fig. 3). Increased (Fig. 3A) or decreased (Fig. 3B) oxygen was observed downstream of all specimens under light and dark conditions, respectively. Relatively sharp boundaries in oxygen concentrations were maintained over distances in the range of centimeters (Figs. 3C and 3D). Previous studies have suggested that oxygen distribution patterns facilitated by benthic organisms are determined by light conditions and the boundary layer thickness, and as a function of flow and surface type (Brown, 2012). Additionally Marhaver *et al.* (2013) described current dependant distribution patterns of organism-associated microbes in ranges of up to 1 m around coral colonies. These findings collectively suggest that benthic organisms living adjacent to one another may experience large fluctuations in key parameters such as oxygen availability, pH values (Smith *et al.*, 2013), microbial community structure, and this variability will be dependent on irradiance, hydrodynamics and their surrounding cohabitants.

Although hydrodynamic conditions might have been affected by wall effects along the planar optode, our study reveals that benthic organisms can drive distinctive, locally heterogeneous patterns in oxygen concentration in their surroundings. The images generated in this study suggest that single point oxygen concentration measurements, that are often made to quantify variability across space and time, may not accurately represent the true oxygen dynamics. Here we found that oxygen concentrations may differ by more than 60% along distances of less than 10 mm. Recent efforts in developing *in situ* applicable oxygen sensitive planar optodes (Glud *et al.*, 2001, AK Gregg, unpublished data) could however provide a useful tool to allow for a better understanding of oxygen fluxes in the 2 or even 3-dimensional space of a highly complex coral reef environment.

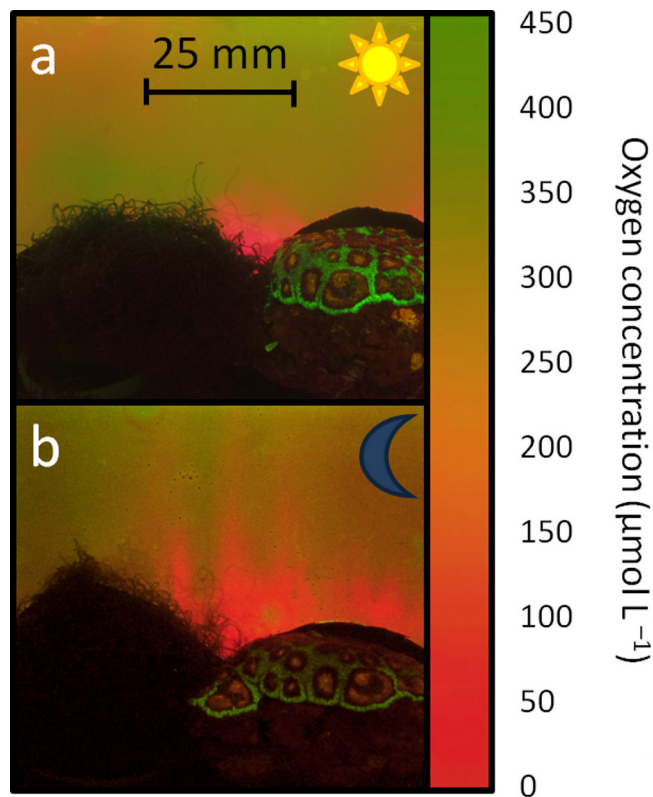


Figure 4 Oxygen patterns generated by coral-algae interaction. Examples of pictures taken of planar optodes mounted over corals and algae in close proximity mimicking coral-algae interaction processes during daylight (A) and dark (B) conditions. Note the low oxygen concentration zones at the interfaces of coral-algae interactions visible even during light conditions permitting photosynthetic oxygen production. Oxygen scale represents approximate values.

The images generated from planar optodes on oxygen dynamics of the interactions between coral and algae when placed in close proximity to one another yielded comparable patterns where there was high oxygen production during the day and consumption at night on the sample surfaces not at the zone of interaction. However, highly reduced oxygen concentrations were present in the immediate proximity of the interfaces. During dark incubations these interaction zones showed the lowest oxygen concentrations measured ($18.4 \pm 7.7 \mu\text{mol O}_2 \text{ L}^{-1}$, Fig. 4B). Even during light treatments with noticeable oxygen generation of both organisms on the distal side, the interfaces were engulfed in spatially confined, low oxygen zones ($97.9 \pm 27.5 \mu\text{mol O}_2 \text{ L}^{-1}$, Fig. 4A). Although these zones of decreased oxygen concentrations were most pronounced in environments with no induced water movement, they could also be detected under flow conditions and *in situ*, in a pilot study to develop new *in situ* Submersible Oxygen Optode Recording (SOOPR) system, by AK Gregg (unpublished data).

These hypoxic, or even anoxic zones at interaction interfaces, have been suggested to drive coral-algal competition processes (Smith *et al.*, 2006), and have been noted by other studies (Barott *et al.*, 2009; Wangpraseurt *et al.*, 2012), but could never be shown in

their full extent and under varying light conditions and hydrodynamics. The mechanisms underlying these patterns are currently subject to discussion. While some studies attribute these anoxic conditions to modifications in small scale topography, with no immediate effects on interaction processes, others suggest increased microbial oxygen demand as the underlying cause. Previous studies have shown that phase shifts from slow-growing reef-building organisms to fleshy algae, as a result of increased anthropogenic influences (*Francini-Filho et al., 2013*), were accompanied by shifts from photosynthetic microbial communities to higher abundances of archaeal and viral sequences and more bacterial pathogens (*Bruce et al., 2012*). These shifts may also result in shifts in microbial metabolic rates at coral algal interaction zones.

The DDAM (dissolved organic matter, disease, algae, microbes) model introduced by *Dinsdale & Rohwer (2011)* hypothesizes that algae release bioavailable organic compounds (*Haas et al., 2011*), which then facilitate microbial growth and respiration (*Wild et al., 2010; Nelson et al., 2013*), particularly of opportunistic pathogens (*Dinsdale et al., 2008*). This likely leads to higher morbidity and mortality of corals (*Kuntz et al., 2005; Kline et al., 2006*) as a consequence of both increases in coral pathogens and dramatically reduced oxygen availability (reviewed in *Barott & Rohwer, 2012*).

The data presented here provides compelling, visible evidence of the existence of highly variable patterns in oxygen distribution patterns associated with benthic reef organisms. Despite this variability we see clear patterns of oxygen decline associated with the interface between interacting coral and algae during both dark and daylight conditions. This implies that the driver for these pronounced low oxygen regions is not solely an effect of low metabolic activity facilitated by a depression in the local topography (*Wangpraseurt et al., 2012*), but can more likely be attributed to (a) increases in heterotrophic metabolism of the competitors as a general response to stress (*Moberg et al., 1997; Abrego et al., 2008*), or (b) increases in microbial oxygen demand (*Smith et al., 2006; Barott & Rohwer, 2012*). This new technique thus provides an opportunity to clearly visualize and quantify these patterns. Further our results suggest that the pattern of algae induced hypoxia in competitive interactions between corals and algae may be a common phenomenon.

ACKNOWLEDGEMENTS

We especially thank Morten Larsen and Ronnie N. Glud for their assistance with the planar optode preparation and camera system set up. Further we thank Peter Salamon, Jim Nulton, and the Undergraduate Biomath Program for their help with the picture analysis (funded by NSF Grant No. 0827278). We also thank Franklin Holub for his support with Rawhide. Thanks to Birch Aquarium at Scripps for providing the algal specimens.

ADDITIONAL INFORMATION AND DECLARATIONS

Funding

Funding for this study was provided by the National Science Foundation to Principal Investigators JES (NSF Grant No. OCE-0927448) and FR (NSF Grant No. OCE-0927448 OCE-0927415 and DEB-1046413). Additional funding was provided by CAPES-FIPSE

and Rede Abrolhos (SISBIOTA/CAPES, CNPq, FAPES), Brazil. The funders had no role in study design, data collection and analysis, decision to publish, or preparation of the manuscript.

Grant Disclosures

The following grant information was disclosed by the authors:
NSF: Grant Nos. OCE-0927448, OCE-0927415, DEB-1046413.

Competing Interests

The authors declare no competing interests.

Author Contributions

- Andreas F. Haas and Allison K. Gregg conceived and designed the experiments, performed the experiments, analyzed the data, wrote the paper.
- Jennifer E. Smith and Forest Rohwer conceived and designed the experiments, analyzed the data, contributed reagents/materials/analysis tools, wrote the paper.
- Maria L. Abieri performed the experiments, analyzed the data, wrote the paper.
- Mark Hatay conceived and designed the experiments, performed the experiments, analyzed the data, contributed reagents/materials/analysis tools, wrote the paper.

Supplemental Information

Supplemental information for this article can be found online at <http://dx.doi.org/10.7717/peerj.106>.

REFERENCES

- Abrego D, Ulstrup KE, Willis BL, van Oppen MJ. 2008.** Species-specific interactions between algal endosymbionts and coral hosts define their bleaching response to heat and light stress. *Proceedings of the Royal Society B: Biological Sciences* 275:2273–2282 DOI 10.1098/rspb.2008.0180.
- Barott K, Smith JE, Dinsdale E, Hatay M, Sandin S, Rohwer FL. 2009.** Hyperspectral and physiological analyses of coral-algal interactions. *PLoS ONE* 4:e8043 DOI 10.1371/journal.pone.0008043.
- Barott K, Rohwer F. 2012.** Unseen players shape benthic competition on coral reefs. *Trends in Microbiology* 20:621–628 DOI 10.1016/j.tim.2012.08.004.
- Brown A. 2012.** The influence of water flow on mechanisms underlying coral-algal interactions. Master of Science Thesis, California State University, Northridge.
- Bruce T, Meirelles PM, Garcia G, Paranhos R, Rezende CE, de Moura RL, Filho RF, Coni EOC, Vasconcelos AT, Filho GA, Hatay M, Schmieder R, Edwards R, Dinsdale E, Fabiano L, Thompson FL. 2012.** Abrolhos bank reef health evaluated by means of water quality, microbial diversity, benthic cover, and fish biomass data. *PLoS ONE* 7:e36687 DOI 10.1371/journal.pone.0036687.
- de Beer D, Stoodley P, Roe F, Lewandowski Z. 1994.** Effects of biofilm structures on oxygen distribution and mass transport. *Biotechnology and Bioengineering* 43:1131–1138 DOI 10.1002/bit.260431118.

- Dinsdale EA, Pantos O, Smriga S, Edwards RA, Angly F, Wegley L, Hatay M, Hall D, Brown E, Haynes M, Krause L, Sala E, Sandin SA, Thurber RV, Willis BL, Azam F, Knowlton N, Rohwer F. 2008. Microbial ecology of four coral atolls in the Northern Line Islands. *PLoS ONE* 3:e1584 DOI 10.1371/journal.pone.0001584.
- Dinsdale EA, Rohwer F. 2011. Fish or germs? Microbial dynamics associated with changing trophic structures on coral reefs. In: Dubinsky Z, Stambler N, eds. *Coral reefs: an ecosystem in transition*. Dordrecht: Springer Verlag, 231–240.
- Francini-Filho RB, Coni EOC, Meirelles PM, Amado-Filho GM, Thompson FL, Pereira-Filho GH, Bastos AC, Abrantes DP, Ferreira CM, Gibran FZ, Güth AZ, Sumida PYG, Oliveira NL, Kaufman L, Minte-Vera CV, Moura RL. 2013. Dynamics of coral reef benthic assemblages of the Abrolhos Bank, Eastern Brazil: inferences on natural and anthropogenic drivers. *PLoS ONE* 8:e54260 DOI 10.1371/journal.pone.0054260.
- Frederiksen MS, Glud RN. 2006. Oxygen dynamics in the rhizosphere of *Zostera marina*: a two-dimensional planar optode study. *Limnology and Oceanography* 51:1072–1083 DOI 10.4319/lo.2006.51.2.1072.
- Glud RN, Tengberg A, Kühl M, Hall POJ, Klimant I, Holst G. 2001. An in situ instrument for planar O₂ optode measurements at benthic interfaces. *Limnology and Oceanography* 46:2073–2080 DOI 10.4319/lo.2001.46.8.2073.
- Glud RN, Eyre BD, Patten N. 2008. Biogeochemical responses to coral mass spawning at the Great Barrier Reef: effects on respiration and primary production. *Limnology and Oceanography* 53:1014–1024 DOI 10.4319/lo.2008.53.3.1014.
- Haas AF, Jantzen C, Naumann MS, Iglesias-Prieto R, Wild C. 2010. Organic matter release by the dominant primary producers in a Caribbean reef lagoon: implication for *in situ* O₂ availability. *Marine Ecology Progress Series* 409:27–39 DOI 10.3354/meps08631.
- Haas AF, Nelson CE, Wegley Kelly L, Carlson CA, Rohwer F, Leichter JJ, Wyatt A, Jennifer E, Smith JE. 2011. Effects of coral reef benthic primary producers on dissolved organic carbon and microbial activity. *PLoS ONE* 6:e27973 DOI 10.1371/journal.pone.0027973.
- Hench JL, Leichter JJ, Monismith SG. 2008. Episodic circulation and exchange in a wave-driven coral reef and lagoon system. *Limnology and Oceanography* 53:2681–2694 DOI 10.4319/lo.2008.53.6.2681.
- Holst G, Kohls O, Klimant I, König B, Kühl M, Richter T. 1998. A modular luminescence lifetime imaging system for mapping oxygen distribution in biological samples. *Sensors and Actuators B* 51:163–170 DOI 10.1016/S0925-4005(98)00232-9.
- Jones CG, Lawton JH, Shachak M. 1994. Organisms as ecosystem engineers. *Oikos* 69:373–386 DOI 10.2307/3545850.
- Kline DI, Kuntz NM, Breitbart M, Knowlton N, Rohwer F. 2006. Role of elevated organic carbon levels and microbial activity in coral mortality. *Marine Ecology Progress Series* 314:119–125 DOI 10.3354/meps314119.
- Klimant I, Meyer V, Kühl M. 1995. Fiber-optic oxygen microsensors, a new tool in aquatic biology. *Limnology and Oceanography* 40:1159–1165 DOI 10.4319/lo.1995.40.6.1159.
- Kühl M, Cohen Y, Dalsgaard T, Jorgensen BB, Revsbech NP. 1995. Microenvironment and photosynthesis of zooxanthellae in scleractinian corals studied with microsensors for O₂, pH and light. *Marine Ecology Progress Series* 117:159–172 DOI 10.3354/meps117159.
- Kühl M, Holst G, Larkum AWD, Ralph PJ. 2008. Imaging of oxygen dynamics within the endolithic algal community of the massive coral *Porites lobata*. *Journal of Phycology* 44:541–550 DOI 10.1111/j.1529-8817.2008.00506.x.

- Kuntz NM, Kline DI, Sandin SA, Rohwer F. 2005. Pathologies and mortality rates caused by organic carbon and nutrient stressors in three Caribbean coral species. *Marine Ecology Progress Series* 294:173–180 DOI 10.3354/meps294173.
- Larkum AWD, Koch EMW, Kühl M. 2003. Diffusive boundary layers and photosynthesis of the epilithic algal community of coral reefs. *Marine Biology* 142:1073–1082.
- Larsen M, Borisov SM, Grunwald B, Klimant I, Glud RN. 2011. A simple and inexpensive high resolution color ratiometric planar optode imaging approach: application to oxygen and pH sensing. *Limnology and Oceanography: Methods* 9:348–360 DOI 10.4319/lom.2011.9.348.
- Marhaver KL, Vermeij MJ, Rohwer F, Sandin SA. 2013. Janzen-Connell effects in a broadcast-spawning Caribbean coral: distance-dependent survival of larvae and settlers. *Ecology* 94:146–160 DOI 10.1890/12-0985.1.
- Mayr T, Borisov SM, Abel T, Enko B, Waich K, Mistlberger G, Klimant I. 2009. Light harvesting as a simple and versatile way to enhance brightness of luminescent sensors. *Analytical Chemistry* 81:6541–6545 DOI 10.1021/ac900662x.
- Middleton JH, Coutis P, Griffin DA, Macks A, McTaggart A, Merrifield MA, Nippard GJ. 1994. Circulation and water mass characteristics of the southern Great Barrier Reef. *Australian Journal of Marine and Freshwater Research* 45:1–18 DOI 10.1071/MF9940001.
- Moberg F, Nyström M, Kautsky N, Tedengren M, Jarayabhand P. 1997. Effects of reduced salinity on the rates of photosynthesis and respiration in the hermatypic corals *Porites lutea* and *Pocillopora damicornis*. *Marine Ecology Progress Series* 157:53–59 DOI 10.3354/meps157053.
- Nelson CE, Goldberg SJ, Kelly LW, Haas AF, Smith JE, Rohwer F, Carlson CA. 2013. Coral and macroalgal exudates vary in neutral sugar composition and differentially enrich reef bacterioplankton lineages. *The ISME Journal* 7:962–979 DOI 10.1038/ismej.2012.161.
- Niggel W, Haas AF, Wild C. 2010. Benthic community composition affects O₂ availability and variability in a Northern Red Sea fringing reef. *Hydrobiologia* 644:401–405 DOI 10.1007/s10750-010-0200-4.
- Oguri K, Kitazato H, Glud RN. 2006. Platinum octaethylporphyrin based planar optodes combined with UV-LED excitation light source: an ideal tool for high resolution O₂ imaging in O₂ depleted environments. *Marine Chemistry* 100:95–107 DOI 10.1016/j.marchem.2005.11.005.
- Polerecky L, Franke U, Werner U, Grunwald B, de Beer D. 2005. High spatial resolution measurement of oxygen consumption rates in permeable sediments. *Limnology and Oceanography: Methods* 3:75–85 DOI 10.4319/lom.2005.3.75.
- Rasheed M, Wild C, Franke U, Huettel M. 2004. Benthic photosynthesis and oxygen consumption in permeable carbonate sediments at Heron Island, Great Barrier Reef, Australia. *Estuarine Coastal and Shelf Science* 59:139–150 DOI 10.1016/j.ecss.2003.08.013.
- Shashar N, Cohen Y, Loya Y. 1993. Extreme diel fluctuations of oxygen in diffusive boundary layers surrounding stony corals. *Biological Bulletin* 185:455–461 DOI 10.2307/1542485.
- Smith JE, Shaw M, Edwards RA, Obura D, Pantos O, Sala E, Sandin SA, Smriga S, Hatay M, Rohwer FL. 2006. Indirect effects of algae on coral: algae-mediated, microbe-induced coral mortality. *Ecology Letters* 9:835–845 DOI 10.1111/j.1461-0248.2006.00937.x.
- Smith JE, Price NN, Nelson CE, Haas AF. 2013. Coupled changes in oxygen concentration and pH caused by metabolism of benthic coral reef organisms. *Marine Biology* DOI 10.1007/s00227-013-2239-z.
- Stramma L, Schmidtko S, Levin LA, Johnson GC. 2010. Ocean oxygen minima expansions and their biological impacts. *Deep-Sea Research I* 57:587–595 DOI 10.1016/j.dsr.2010.01.005.

- Volkenborn N, Polerecky L, Wethey DS, Woodin SA. 2010.** Oscillatory porewater bioadvection in marine sediments induced by hydraulic activities of *Arenicola marina*. *Limnology and Oceanography* 55:1231–1247 DOI [10.4319/lo.2010.55.3.1231](https://doi.org/10.4319/lo.2010.55.3.1231).
- Wangpraseurt D, Weber M, Røy H, Polerecky L, de Beer D, Nugues MM. 2012.** In situ oxygen dynamics in coral-algal interactions. *PLoS ONE* 7:e31192 DOI [10.1371/journal.pone.0031192](https://doi.org/10.1371/journal.pone.0031192).
- Wild C, Huettel M, Klüeter A, Kremb SG, Rasheed MY, Jørgensen BB. 2004.** Coral mucus functions as an energy carrier and particle trap in the reef ecosystem. *Nature* 428:66–70 DOI [10.1038/nature02344](https://doi.org/10.1038/nature02344).
- Wild C, Niggli W, Naumann MS, Haas AF. 2010.** Organic matter release by Red Sea coral reef organisms - potential effects on microbial activity and *in-situ* O₂ availability. *Marine Ecology Progress Series* 411:61–71 DOI [10.3354/meps08653](https://doi.org/10.3354/meps08653).