

UC Merced

Proceedings of the Annual Meeting of the Cognitive Science Society

Title

Typing time PWI: A scalable paradigm for studying lexical production

Permalink

<https://escholarship.org/uc/item/2t73w1fx>

Journal

Proceedings of the Annual Meeting of the Cognitive Science Society, 45(45)

Authors

Upadhye, Shiva
Futrell, Richard

Publication Date

2023

Peer reviewed

Typing time PWI: A scalable paradigm for studying lexical production

Shiva Upadhye and Richard Futrell

Department of Language Science
University of California, Irvine
{upadhyes, rfutrell}@uci.edu

Abstract

Lexical production research has relied extensively on in-person naming experiments such as Picture Word Interference (PWI). While the interference effects observed in the standard paradigm have been well-attested, PWI experiments have traditionally been underpowered, owing to limitations associated with large-scale data collection. In this study, we validate a scalable, typing time-based PWI paradigm that can be deployed on the internet, and enables large-scale replications of the interference effects observed in the spoken modality. We also propose an automated response coding process that incorporates production errors such as incorrect responses and restarts, and can be leveraged to illuminate aspects of response conflict and correction processes in incremental production.

Keywords: lexical production; Picture Word Interference, typing modality

Introduction

A key phenomenon for the study of language production at the level of individual words is **lexical interference**, in which a speaker ought to produce one word but mistakenly produces another instead. The widely-used **Picture Word Interference** (PWI) paradigm (Rosinski, 1977) probes this effect in a picture-naming setting, by presenting participants with a stimulus composed of a target image superimposed with an orthographic distractor, as shown in Figure 1. Various interference effects can be observed in this paradigm: for example, there is a general interference effect consisting of a delay in naming when the target is coupled with an incongruent distractor (Rosinski et al., 1975; W. R. Glaser & Döngelhoff, 1984; MacLeod, 1991), and a semantic interference effect, characterized by a larger delay when the distractor is semantically related to the word than when it is unrelated (Lupker, 1979; Roelofs & Piai, 2017). Framing lexical production as a two-alternative forced choice (2AFC) task, the PWI paradigm engages meta-cognitive processes such as executive control and conflict monitoring, similar to the Stroop task (Van Maanen & Van Rijn, 2010; Xiao et al., 2010; Starreveld & La Heij, 2017). Consequently, the paradigm is a workhorse method for studying how language processing mechanisms interact with cognitive control, for example as in the case of code-switching performance in bilingualism (Ehri & Ryan, 1980).

While the PWI paradigm is widely recruited in psycholinguistic research, its reach is hindered by the practicalities of running PWI experiments: participants must be recruited to participate in an in-person naming experiment; responses are recorded; the recordings must be coded and filtered; etc. As a result, PWI experiments are often limited in terms of the number of subjects and the diversity of participant population. The lack of scalability contributes to weak statistical

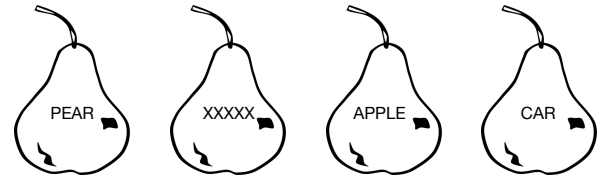


Figure 1: Conditions in the PWI paradigm. From left to right, the **identity** or **congruent**, **neutral**, **incongruent (related)** and **incongruent (unrelated)** conditions.

power for detecting moderators of interference (Bürki et al., 2020). Whereas recent web-based PWI experiments have addressed some of the concerns associated with running participants in-person (Fairs & Strijkers, 2021; Vogt et al., 2022), transforming the audio recordings into usable reaction time (RT) measures still requires a substantial data processing effort, which also includes judgement calls such as assessing the quality of the recording and verifying the validity of the participants' responses. Consequently, automating data processing and scaling up the experiment is costly, both in terms of experimenter effort and resources.

We present a scalable, internet-based version of the PWI paradigm based on typing time, which we call **tPWI**. The paradigm not only supports fully automated extraction of a variety of dependent measures (not just onset latency), it also enables automatic characterization of the different kinds of errors that may be encountered in the participants' responses. We demonstrate that the tPWI paradigm not only replicates the general and semantic interference effects observed in the spoken paradigm, but also those associated with well-attested variations such as manipulations of stimulus onset asynchrony (SOA) and response set membership. Furthermore, we also show that incorporating different types of responses including production errors facilitates unified analyses of response times and error rates in the tPWI paradigm.

Related Work

PWI paradigm and manipulations

A critical question common to both Stroop task and PWI research is whether the interference arises at the level of perceptual processing, lexical selection, or articulatory planning (M. Glaser & Glaser, 1982). Two accounts of the lexical interference effect have gained traction in PWI literature (Bürki et al., 2020). The first account, known as the **competitive lexical selection** hypothesis, argues that semantic interference

arises because related distractors accrue a higher degree of activation than their unrelated counterparts by virtue of shared semantic features, hence making them likely candidates for production (Levelt et al., 1999; Damian & Bowers, 2003; Abdel Rahman & Melinger, 2009). The **response exclusion** account, on the other hand, argues that the target and distractor do not necessarily compete for selection during lexical access. Rather, the high degree of activation received by a semantically related distractor activates its phonological form, which then enters the articulatory buffer as a candidate for production (Mahon et al., 2007). Hence, under this account, interference originates at the level of articulation rather than retrieval.

Several experimental manipulations have been proposed in order to tease apart the predictions of the two accounts. Since the PWI task involves cross-modal stimuli, specifically a pictorial target and an orthographic distractor, the degree of semantic interference may be further modulated by temporal differences in target and distractor processing (M. Glaser & Glaser, 1982). In order to test for these effects, the timing of distractor presentation may be varied such that it is presented before (negative SOA), after (positive SOA), or at the same time (SOA = 0) as the target (W. R. Glaser & Dungelhoff, 1984). The Stimulus Onset Asynchrony (SOA) manipulation has been well-attested in the PWI literature. Particularly, the semantic interference effect has been observed at shorter SOAs since the target and distractor are more likely to be processed simultaneously (W. R. Glaser & Dungelhoff, 1984; Starreveld & Heij, 1996). In contrast, long negative SOAs have been associated with a speedup in naming or **facilitation** (Bloem et al., 2004; Zhang et al., 2016). While the distractor is activated much earlier than the target, the activation received by the distractor decays due to the long SOA interval. Consequently, some accounts ascribe facilitation to residual activation from the distractor (Finkbeiner & Caramazza, 2006) while others attribute it to internal monitoring and control processes that take scope after lexical selection (Python et al., 2018). Intriguingly, interactions between SOA and distractor condition have been admitted as evidence for both the competitive lexical selection and response exclusion accounts (Burki et al., 2020).

Another critical manipulation that has been examined in PWI research is whether the words that appear as orthographic distractors also appear as targets in other trials. Since prior retrieval of a word typically primes the word for subsequent access, including distractors in the response set may affect their accessibility during production. This modulating effect of response set membership has been rigorously debated in the PWI literature: whereas some experiments report diminished interference or even facilitation for distractors not in the response set (Roelofs, 1992a), others report no significant difference in the magnitude of interference (Caramazza & Costa, 2001).

Production Experiments in the typing modality

The widespread use of typing across a diversity of communicative contexts has transformed it into a production modality worthy of further investigation. Whereas writing has traditionally been neglected in language production research due to its limited scope, function, and register, typing hews closer to speech since it lends itself to rapid execution and correction. Owing to its usage in naturalistic and conversational contexts, typing is subject to many of the same constraints that shape real-time speech production. Language production experiments involving typing, including in picture-naming paradigms, have yielded results that mirror patterns in oral speech production, including showing effects of frequency, contextual predictability, concreteness, and cumulative semantic interference (Cohen Priva, 2010; Torrance et al., 2018; Chen et al., 2021). In spite of the differences in the motor architectures engaged in both modalities, Pinet & Nozari (2018) found that ‘finger twister’ sequences, i.e. the type-written analog of tongue twisters, produced errors that closely resembled those found in speech. Similarly, monitoring and error detection processes in both modalities have been associated with common electrophysiological signatures (Pinet & Nozari, 2020), although a proclivity toward correction rather than error prevention has been observed in typed production (Crump & Logan, 2013). More closely related to this work, Stark et al. (2021) find that the cumulative interference effect observed in a web-based blocked cyclic naming task is preserved in typed production.

Furthermore, in existing successful computational models, the representations and processes recruited by spoken and typed production systems share crucial features. Particularly, models of speech and typing are both characterized by two stages: the first involves the activation of lexico-semantic representations that, in turn, activate the constituent phonetic or graphemic schemata (Levelt, 1992; McClelland & Rumelhart, 1981), and the second involves a mapping between the activated schemata and modality-specific motor processes (Dell & O’Searghdha, 1992; Crump & Logan, 2010).

Based on these findings, we take the general stance that typing data reflects many of the same processes as oral speech, plus some additional processes primarily involving motor control of the digits and factors such as keyboard layouts. As a result, results involving typing time can be indicative of underlying language production processes.

Web-based experimental setup

We design and host web-based tPWI using the Javascript-based Ixet platform (Zehr & Schwarz, 2018) which records all input keystrokes and their timing. Participant recruitment is handled through Prolific, and two screening criteria were applied: participants had to be native English speakers residing in the United States and could only use devices with physical keyboards to complete this experiment. To address issues that could arise due to the absence of experimenter interaction or supervision during the experiment, we introduce a rigorous

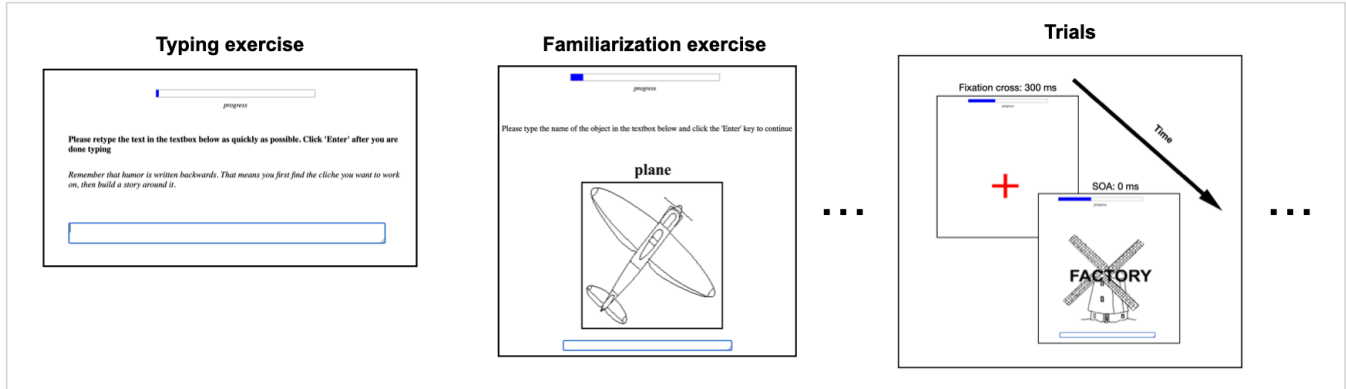


Figure 2: Web-based experimental design

two-stage familiarization phase before the main experiment begins. In the first stage, participants view all the images in the response set paired with their canonical names. In the next stage, participants are asked to recall and type the name of all the images in a randomized order. Following practice trials where the participants are asked to name the image, they proceed to the experimental trials, where they are presented with the stimulus 300 ms after a fixation cross. The time at which the stimulus was rendered as well as the time corresponding to each keystroke was logged in order to compute response latency (see Fig 2 for illustration of the experiment design).

Response validity and automated coding

During the experiment, participants' responses in an individual trial are evaluated online after they click the `Enter` button on their keyboard or press `Enter` button displayed on the screen. A response is considered valid if the first and last segments of the typed response match either the target or the distractor. In this case, the participant is allowed to proceed to the next trial. While the participants were instructed to type the canonical name of the image, distractors were deemed valid responses for two reasons. First, from a logistical standpoint, this allowed the participants to move to the next trial quickly, similar to spoken experiment. More importantly, the rate of distractor responses offers crucial insights into the implicit speed-accuracy trade-off at the participant level as well as the modality level. However, if the response is deemed invalid (sample response provided in Table 1), the participant is notified of their error and asked to correct their response in order to move to the next trial. To circumvent instances where a participant stays on a trial for too long because they failed to provide any valid response, a "Give up" button appears after the first attempt, allowing the participant to move to the next trial.

After data-collection, responses were categorized as **fluent**, **edited**, **restarted**, or **invalid** during post-processing¹ (see Fig. 3). Responses that passed the online check in

Category	Typed response	Target	Distractor
Fluent	c,h,u,r,c,h,(E)	church	castle
	p,l,a,t,e,(E)	glass	plate
Edited	w,a,r,f,(B),d,r,o,s,(B),b,e,(E)	wardrobe	wardrobe
	p,i,s,t,o,l,e,(E),(B),(E)	pistol	bed
Restarted	b,(B),d,e,s,k,(E)	desk	bed
	c,u,(B),(B),j,u,g,(E)	jug	cup
	g,u,(B),(B),(B),p,i,s,t,o,l,(E)	pistol	cannon
Invalid	b,u,s,(E),(B),(B),(B),(B),t,r,a,o,(B),i,n,(E)	train	arm

Table 1: Sample typed responses from each response category. (B) means backspace, (E) means Enter.

the first attempt and involved no edits (as measured by the backspace key) were automatically coded as *fluent*. A further distinction was made between fluent-correct responses and fluent-incorrect responses based on whether the participant typed the target or distractor (see Table 1). In contrast, responses where the participants attempt to correct minor ty-

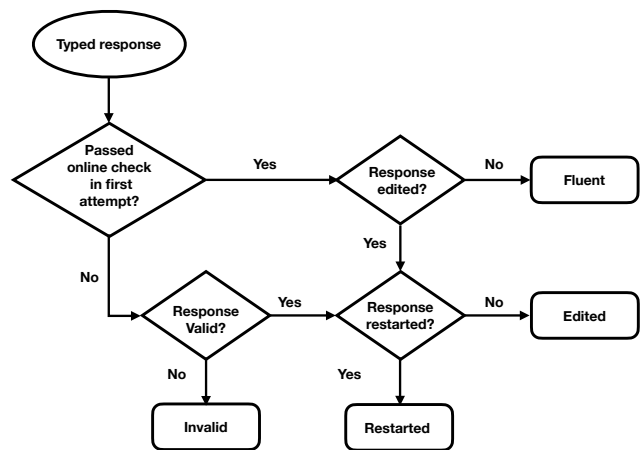


Figure 3: Decision process for automated response categorization

¹Preprocessed data from all three experiments can be accessed at <https://osf.io/z79u5/>

pographic errors before completing their attempt were categorized as *edited*. Responses that initially failed the online check due to due to typographic errors were also included in this category, provided the response was within an edit distance of 2 before the user clicked the `Enter` key. We define *invalid* responses as those where the response failed the initial online check after the participant clicked the `Enter` key, and subsequent attempts aimed at revising the response rather than merely correcting typos. To distinguish between the two strategies, we match both the original and revised input to the two possible responses (i.e., the target and the distractor). If the original and corrected input matched different responses, the response was coded as *invalid*. If not, it was categorized as *edited*. Finally, we consider *invalid* responses to be different than *restarted* responses. We identify *restarted* responses as those where the participant's initial typed input matched one response but was corrected to a different response before they completed an attempt i.e., clicked `Enter`. We accommodate this distinction in our taxonomy since a correction ensues before the user receives any overt feedback about the error, unlike in the case of *invalid* responses where the participants revise their response after being notified of an error.

Experiments

We replicate Roelofs & Piai (2017), a high powered spoken experiment, in the typing paradigm. Experiment 1 serves as a baseline replication, where all distractors are presented synchronously and belong to the response set. A critical difference between the typed replication and Roelofs & Piai (2017) is that the latter included three exposures for each of their items, whilst we include a single exposure. In Experiment 2, we manipulate the stimulus onset asynchrony, presenting distractors at three SOAs: -150 ms, 0 ms, and 150 ms. Finally, in Experiment 3, we present distractors synchronously but manipulate the response set membership by including incongruent (related and unrelated) distractors that do not appear as targets.

Proposed analyses We operationalize onset latency as the delay between when the target image was rendered and the first keystroke corresponding to either the target or distractor was registered. To hew close to the standard paradigm, we only consider the *fluent* trials where the participants typed the target. We test for two attested interference effects: a general interference (GI) effect, defined by longer latencies for incongruent trials relative to neutral trials, and a semantic interference (SI) effect, characterized by longer latencies for related distractors compared to unrelated distractors. We use linear mixed effects models (LMEMs) (Baayen et al., 2008) with random slopes and intercepts for subjects, targets, and distractors. For all models, the experimental condition was treated as a critical fixed effect. To test for the GI effect, the congruent condition was coded as 0 and the incongruent condition was coded as +1. Similarly in order to test for the SI effect, the unrelated condition was coded as the reference level

while the related condition was coded as +1. For experiments 2 and 3, we include a condition \times SOA term and a condition \times distractor membership term respectively to test for the interaction between these two effects.

Experiment 1: Basic Semantic Interference

Materials and Participants: We use the English glosses of the Dutch stimuli from Roelofs & Piai (2017) to validate the paradigm. We invert the white-on-black line drawings from the original experiment into black-on-white images that are better suited for a web-based experiment set against a white background. As in the original experiment, each target image was paired with a distractor word that was (i) identical, (ii) semantically related, (iii) unrelated, and (iv) neutral, as indicated by an 'XXXXX' string. For this experiment, 100 native English speakers using devices with physical keyboards were recruited.

Results: In order to hew close to the spoken paradigm, we restrict the naming latency analyses to trials with no typos or corrections. A linear mixed effects model was used to model onset latency with condition as the fixed effect, and subjects and targets as random effects (Barr et al., 2013). Our analysis confirms a significant general interference effect, with slower typing onset latencies for the incongruent conditions relative to the neutral condition ($\beta = 154.26, SE = 17.14, p < 0.001$). Considering the subset of incongruent trials, we also find that the paradigm replicates the semantic interference effect ($\beta = 68.8302, SE = 26.31, p < 0.01$), as characterized by significantly slower latencies in the related versus unrelated condition (see Fig. 4a)

Experiment 2: Stimulus Onset Asynchrony

Materials and Participants: We use images from the validation experiment as stimuli but vary the timing of the distractor presentation with respect to the target. In particular, we present the distractor (i) synchronously (0 ms), (ii) shortly before the target (-150 ms), and (iii) shortly after the target (+150 ms). To ensure precision transitions between image frames, we convert the stimuli into the graphical interchange (GIF) format. The trial structure was identical to that in the previous experiment, and 96 participants were recruited using Prolific.

Results: We find a significant general interference effect for both short negative ($\beta = 103.30, SE = 23.60, p < 0.001$) and short positive SOAs ($\beta = 105.5114, SE = 25.3127, p < 0.001$), with a significant delays in naming latency in the incongruent conditions (see Fig. 4b). We also recover a significant effect of semantic relatedness in the short positive SOA of 150 ms ($\beta = 58.5926, SE = 21.59, p < 0.01$). However, we do not find a significant delay in the related condition relative to the unrelated condition in the short negative SOA trials ($\beta = 29.93, SE = 16.1411, p > 0.1$). Examining the effects of SOA, we find that onset latencies are modulated by SOA, but only when distractors are presented -150 ms earlier than the target, as evinced by longer onset

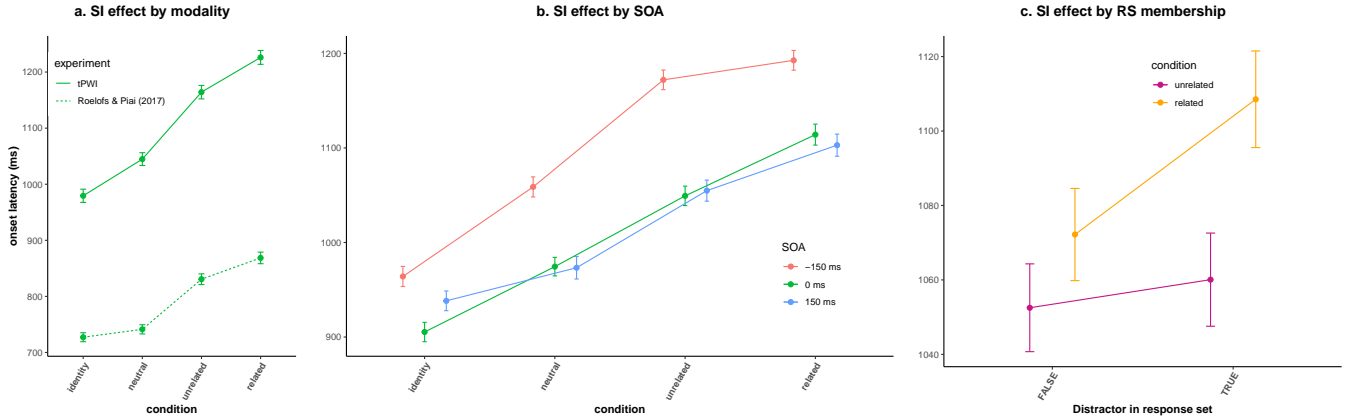


Figure 4: (a) Comparison of the SI effect in spoken versus typed modalities, (b) the SI effect across SOAs in the typing modality, and (c) the SI effect for distractors within and outside the response set. Error bars denote 95 % confidence intervals.

latencies in the negative SOA condition compared to the synchronous condition (Figure 4(b)). Compared to trials with SOA = 0, trials with SOA = -150 were characterized by a smaller difference between related and unrelated conditions ($\beta = -42.79, SE = 16.7927, p < 0.05$). Whereas a similar trend was observed for trials where distractors were presented 150 ms after the target, the difference was not found to be significant ($\beta = -16.09, SE = 31.5020, p > 0.5$).

Experiment 3: Response set membership

Materials and Participants: We use the same stimuli as Experiment 1, but include a response set manipulation by adding related and unrelated distractor words that do not appear as targets. Frequencies of these distractors were estimated using the SUBTLEXus corpus (Brysbaert & New, 2009) to control for distractor frequency effects. For this experiment, we recruited 60 native English speakers from Prolific. Four participants were excluded from analysis due to data-collection issues.

Results: Incongruent distractors not in the response set elicited a delay in naming relative to neutral condition, as evinced by a significant general interference effect ($\beta = 83.01, SE = 7.45, p < 0.001$). Related distractors that were not part of the response set were also characterized by longer naming delays ($\beta = 21.35, SE = 7.4962, p < 0.01$). For the unrelated trials, onset latencies were longer when the distractor was in the response set, although the difference was not found to be significant ($\beta = -8.49, SE = 7.85, p > 0.1$). However, in case of related distractors, response set membership had a significant effect on onset latency, with distractors in the response set eliciting greater delays in naming ($\beta = -31.32, SE = 12.4227, p < 0.05$).

Toward integrated analyses of reaction times and errors

We use the automated response coding process detailed in Figure 3 to identify and extract restarted responses (e.g.,

c, u, (Backspace), (Backspace), j, u, g) as well as incorrect responses i.e., trials where the participant typed the distractor rather than the target. For restarted responses, we omit control keys such as `Backspace` from our calculation, and compute response onset latency by identifying the timing of the first keystroke matching the restarted response. Word initial typos or characters not matching the distractor were considered *edited* rather than *restarted* responses. The per-category response rates for the tPWI validation experiment are summarized in Table 2.

response	% of trials
fluent	88.32%
edited	8.57%
restarted	0.64%
incorrect	0.86%
invalid	1.65%

Table 2: Percentage of total responses by category

Figure 5 illustrates the differences in onset latencies across response categories. To estimate the effects of response category, we fit a LMEM with onset latency as the dependent measure, response category as a critical fixed effect, and targets, distractors, and subjects as random effects. We observe that onset latencies of incorrect trials were faster than those of correct trials ($\beta = -227.74, SE = 61.18, p < 0.001$). Unlike correct trials, however, no significant difference between related and unrelated trials was found within incorrect trials ($\beta = 93.62, SE = 85.07, p > 0.1$). Intriguingly, a qualitative difference between the related and unrelated condition was observed for restarted trials, with slower restart latencies for unrelated rather than related trials ($\beta = -465.5891, SE = 145.1418, p < 0.01$).

Discussion

The goal of this study is not to adjudicate between different accounts of the lexical interference effects proposed in the

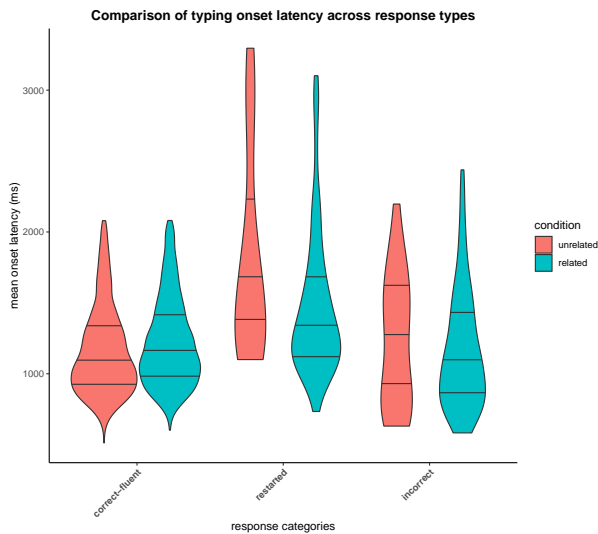


Figure 5: Size of semantic interference effects across experiments)

literature. Rather, we focus on investigating whether typing serves as a feasible and sensitive modality for capturing the RT signatures of the lexical production processes traditionally studied using PWI. Our results align with the growing literature on modality-independent effects in lexical production (Pinet & Nozari, 2018, 2020; Stark et al., 2021). While onset latencies were generally longer for typed production (Figure 4(a)), the interference effects that emerge in the tPWI paradigm are qualitatively consistent with prior work investigating the basic semantic interference effect as well as effects of SOA and response set membership. First, we confirm that the general interference effects observed in synchronous and short stimulus onset asynchrony manipulations can be reliably replicated in the typing-time paradigm. Critically, the significant semantic interference observed in both the synchronous and short positive asynchronous distractor onset experiments suggest modality-independent loci for these effects. Intriguingly, our analysis revealed that positive SOA did not have a modulating effect on onset latency. In contrast, trials with negative SOA produced longer onset latencies. However, compared to the synchronous condition, the semantic interference effect was found to be smaller, which suggests that the unrelated condition was also characterized by a greater degree of difficulty when $SOA = -150$ ms. It should be noted, however, that although semantic interference has been reliably replicated at SOAs of ± 100 and ± 150 ms (Bürki et al., 2020), these intervals may be too short for the typing paradigm since typed production is, in general, slower than spoken production. An direction for future work would be to investigate the effects of SOA using step-wise increments, ranging from ± 100 ms to long intervals like ± 1000 ms.

The tPWI paradigm also yielded a significant delay in the related versus unrelated condition when distractors did not

appear as the target in other trials. However, consistent with Roelofs (1992b), the semantic interference was found to be more diminished in this case. Even among related distractors, the ones that were in the response set produced significantly higher interference than those were outside of the response set. This suggests that distractors in the response set were more likely to be primed for production than those outside of the response set. This has important implications for the PWI paradigm since response set membership is a critical criterion when designing stimuli.

Beyond replicating similarity-based interference effects found in the standard naming paradigm, we observe that typing enables the study of incremental production at the level of discrete keystrokes (Crump & Logan, 2010). The response taxonomy proposed in this study leverages this property of the modality to accommodate responses that are typically ignored in the standard paradigm. In particular, the coding process distinguishes between typological errors and restarts as well as corrections made with or without feedback. Although the participants in our experiments were not explicitly incentivized toward speed and/or accuracy, we find that participants are, on average, faster when producing the distractor instead of the target. Since we did not find any significant differences between response latencies for related versus unrelated distractors, the shorter latencies may reflect an implicit preference toward speed (Damaso et al., 2020) or lapses in attention (Starreveld & Heij, 1996). Intriguingly, participants were also found to be slower when restarting their responses in the unrelated rather than related condition - a reversal of the interference effect in the correct trials. The degree of interference is often attributed to the degree of co-activation between target and distractor (Abdel Rahman & Melinger, 2009; Roelofs et al., 2011); a potential explanation for why participants may take longer to switch to the target response in the unrelated condition may be attributed to reduced co-activation between the target and distractor representations. However, these findings are tentative: more thorough investigation of these effects would require the introduction of further manipulations such as time constraints for trials or emphasis on response accuracy.

Conclusion

We present and validate a typing-time based PWI that operationalizes response latency as the time it takes to register the first keystroke corresponding to the response. We find that typing captures the interference effects observed in the standard spoken modality. Finally, we propose a response taxonomy for automated categorization of responses that facilitates integrated analyses of reaction times and different types of production errors.

Acknowledgments

The authors are grateful to Ardi Roelofs and Vitoria Piai for kindly sharing the materials from Roelofs & Piai (2017).

References

- Abdel Rahman, R., & Melinger, A. (2009). Semantic context effects in language production: A swinging lexical network proposal and a review. *Language and Cognitive Processes*, 24(5), 713–734.
- Baayen, R. H., Davidson, D., & Bates, D. M. (2008). Mixed-effects modeling with crossed random effects for subjects and items. *Journal of Memory and Language*, 59(4), 390–412.
- Barr, D. J., Levy, R., Scheepers, C., & Tily, H. J. (2013). Random effects structure for confirmatory hypothesis testing: Keep it maximal. *Journal of Memory and Language*, 68(3), 255–278.
- Bloem, I., van den Boogaard, S., & La Heij, W. (2004). Semantic facilitation and semantic interference in language production: Further evidence for the conceptual selection model of lexical access. *Journal of Memory and Language*, 51(2), 307–323.
- Brysbaert, M., & New, B. (2009). Moving beyond kuera and francis: A critical evaluation of current word frequency norms and the introduction of a new and improved word frequency measure for american english. *Behavior Research Methods*, 41, 977–990.
- Bürki, A., Elbuy, S., Madec, S., & Vasishth, S. (2020). What did we learn from forty years of research on semantic interference? A Bayesian meta-analysis. *Journal of Memory and Language*, 114, 104125.
- Caramazza, A., & Costa, A. (2001). Set size and repetition in the picture–word interference paradigm: Implications for models of naming. *Cognition*, 80(3), 291–298.
- Chen, R., P. Levy, R., & Eisape, T. (2021). On factors influencing typing time: Analyzing typeracer’s massive open access dataset. In *Proceedings of the 43rd annual meeting of the cognitive science society*.
- Cohen Priva, U. (2010). Constructing typing-time corpora: A new way to answer old questions. In *Proceedings of the annual meeting of the cognitive science society* (Vol. 32).
- Crump, M. J. C., & Logan, G. (2010, 10). Hierarchical control and skilled typing: Evidence for word-level control over the execution of individual keystrokes. *Journal of experimental psychology. Learning, memory, and cognition*, 36, 1369–80. doi: 10.1037/a0020696
- Crump, M. J. C., & Logan, G. D. (2013). Prevention and correction in post-error performance: an ounce of prevention, a pound of cure. *Journal of experimental psychology. General*, 142 3, 692–709.
- Damaso, K. A. M., Williams, P. R., & Heathcote, A. (2020). Evidence for different types of errors being associated with different types of post-error changes. *Psychonomic Bulletin & Review*, 27, 435–440.
- Damian, M. F., & Bowers, J. S. (2003). Locus of semantic interference in picture-word interference tasks. *Psychonomic bulletin & review*, 10(1), 111–117.
- Dell, G. S., & O’Seaghdha, P. (1992). Stages of lexical access in language production. *Cognition*, 42, 287–314.
- Ehri, L. C., & Ryan, E. B. (1980). Performance of bilinguals in a picture-word interference task. *Journal of Psycholinguistic Research*, 9(3), 285–302.
- Fairs, A., & Strijkers, K. (2021). Can we use the internet to study speech production? yes we can! evidence contrasting online versus laboratory naming latencies and errors. *Plos one*, 16(10), e0258908.
- Finkbeiner, M., & Caramazza, A. (2006). Now you see it, now you don’t: On turning semantic interference into facilitation in a stroop-like task. *Cortex*, 42(6), 790–796.
- Glaser, M., & Glaser, W. (1982). Time course analysis of the stroop phenomenon. *Journal of Experimental Psychology: Human Perception and Performance*, 8(6), 875.
- Glaser, W. R., & Döngelhoff, F.-J. (1984). The time course of picture-word interference. *Journal of experimental psychology. Human perception and performance*, 10 5, 640–54.
- Levelt, W. J. M. (1992). Accessing words in speech production: Stages, processes and representations. *Cognition*, 42(1-3), 1–22.
- Levelt, W. J. M., Roelofs, A., & Meyer, A. S. (1999). A theory of lexical access in speech production. *Behavioral and Brain Sciences*, 22(1), 1–38.
- Lupker, S. J. (1979). The semantic nature of response competition in the picture-word interference task. *Memory & Cognition*, 7(6), 485–495.
- MacLeod, C. M. (1991). Half a century of research on the Stroop effect: An integrative review. *Psychological Bulletin*, 109(2), 163.
- Mahon, B. Z., Costa, A., Peterson, R., Vargas, K. A., & Caramazza, A. (2007). Lexical selection is not by competition: a reinterpretation of semantic interference and facilitation effects in the picture-word interference paradigm. *Journal of Experimental Psychology: Learning, Memory, and Cognition*, 33(3), 503.
- McClelland, J. L., & Rumelhart, D. E. (1981). An interactive activation model of context effects in letter perception: I. an account of basic findings. *Psychological review*, 88(5), 375.
- Pinet, S., & Nozari, N. (2018). “twisting fingers”: The case for interactivity in typed language production. *Psychonomic Bulletin & Review*, 25, 1449–1457.
- Pinet, S., & Nozari, N. (2020). Electrophysiological correlates of monitoring in typing with and without visual feedback. *Journal of Cognitive Neuroscience*, 32, 603–620.
- Python, G., Fargier, R., & Laganaro, M. (2018). When wine and apple both help the production of grapes: Erp evidence for post-lexical semantic facilitation in picture naming. *Frontiers in human neuroscience*, 12, 136.
- Roelofs, A. (1992a). A spreading-activation theory of lemma retrieval in speaking. *Cognition*, 42, 107–142.

- Roelofs, A. (1992b). A spreading-activation theory of lemma retrieval in speaking. *Cognition*, 42(1-3), 107–142.
- Roelofs, A., & Piai, V. (2017). Distributional analysis of semantic interference in picture naming. *Quarterly Journal of Experimental Psychology*, 70(4), 782–792.
- Roelofs, A., Piai, V., & Schriefers, H. (2011). Selective attention and distractor frequency in naming performance: comment on dhooge and hartsuiker (2010). *Journal of experimental psychology. Learning, memory, and cognition*, 37 4, 1032-8.
- Rosinski, R. R. (1977). Picture-word interference is semantically based. *Child Development*, 643–647.
- Rosinski, R. R., Golinkoff, R. M., & Kukish, K. S. (1975). Automatic semantic processing in a picture-word interference task. *Child Development*, 46, 247-253.
- Stark, K., van Scherpenberg, C., Obrig, H., & Rahman, R. A. (2021). Web-based language production experiments: Semantic interference assessment is robust for spoken and typed response modalities..
- Starreveld, P. A., & Heij, W. L. (1996). Time-course analysis of semantic and orthographic context effects in picture naming. *Journal of Experimental Psychology: Learning, Memory and Cognition*, 22, 896-918.
- Starreveld, P. A., & La Heij, W. (2017). Picture-word interference is a Stroop effect: A theoretical analysis and new empirical findings. *Psychonomic Bulletin & Review*, 24(3), 721–733.
- Torrance, M., Nottbusch, G., Alves, R. A., Arfé, B., Chanquoy, L., Chukharev-Hudilainen, E., ... others (2018). Timed written picture naming in 14 european languages. *Behavior Research Methods*, 50(2), 744–758.
- Van Maanen, L., & Van Rijn, H. (2010). The locus of the gratton effect in picture-word interference. *Topics in Cognitive Science*, 2(1), 168–180.
- Vogt, A., Hauber, R., Kuhlen, A. K., & Rahman, R. A. (2022). Internet-based language production research with overt articulation: Proof of concept, challenges, and practical advice. *Behavior Research Methods*, 54(4), 1954–1975.
- Xiao, X., Zhang, Q., Jia, L., Zhang, Y., & Luo, J. (2010). Temporal course of cognitive control in a picture-word interference task. *Neuroreport*, 21(2), 104–107.
- Zehr, J., & Schwarz, F. (2018). Penncontroller for internet based experiments (ibex)..
- Zhang, Q., Feng, C., Zhu, X., & Wang, C. (2016). Transforming semantic interference into facilitation in a picture-word interference task. *Applied Psycholinguistics*, 37(5), 1025–1049.