

UCLA

UCLA Encyclopedia of Egyptology

Title

Gebel el-Silsila

Permalink

<https://escholarship.org/uc/item/2x73c8bz>

Journal

UCLA Encyclopedia of Egyptology, 1(1)

Author

Kucharek, Andrea

Publication Date

2012-05-28

Supplemental Material

<https://escholarship.org/uc/item/2x73c8bz#supplemental>

Peer reviewed

UCLA ENCYCLOPEDIA *of* EGYPTOLOGY

GEBEL EL-SILSILA

جبل السلسلة

Andrea Kucharek

EDITORS

WILLEKE WENDRICH

Editor-in-Chief

Area Editor Geography

University of California, Los Angeles

JACCO DIELEMAN

Editor

University of California, Los Angeles

ELIZABETH FROOD

Editor

University of Oxford

JOHN BAINES

Senior Editorial Consultant

University of Oxford

Short Citation:

Kucharek, 2012, Gebel el-Silsila. *UEE*.

Full Citation:

Kucharek, Andrea, 2012, Gebel el-Silsila. In Willeke Wendrich (ed.), *UCLA Encyclopedia of Egyptology*, Los Angeles. <http://digital2.library.ucla.edu/viewItem.do?ark=21198/zz002c2fj3>

8501 Version 1, May 2012

<http://digital2.library.ucla.edu/viewItem.do?ark=21198/zz002c2fj3>

GEBEL EL-SILSILA

جبل السلسلة

Andrea Kucharek

Gebel el-Silsila
Gebel Silsileh

Gebel el-Silsila, located on both banks of the Nile between Edfu and Kom Ombo, is a place whose significance was defined by its unique topographic features, namely, the extremely narrow river bed hemmed in by sandstone hills. From the New Kingdom on, huge quantities of sandstone for temple building were quarried here, and during the New Kingdom, Gebel el-Silsila was of considerable religious importance as a place of worship of the inundation. It was also a place of conspicuous royal favor towards private individuals. All of this resulted in a substantial number of monuments, from temples down to graffiti, most of them cut into the rock and thus still in situ.

يمتد جبل السلسلة على جانبي النيل ما بين إدفو وكوم أمبو، حيث تميزه تضاريسه وعناصره الطبوغرافية الفريدة والتي تتمثل في وادي النيل الضيق الذي تطوقه جبال الحجر الرملي. وبداية من عصر الدولة الحديثة فصاعدا بدأت أعمال التحجير بجبل السلسلة للحصول على كميات كبيرة من الحجر الرملي اللازمة لبناء المعابد، ومن هنا جاءت أهمية جبل السلسلة الدينية خلال عصر الدولة الحديثة، حيث اعتبره المصريون القدماء مكان لعبادة الفيضان. كما كان جبل السلسلة هو أحد النقاط التي كرم فيها الملوك الأفراد، حيث كان نتاج ذلك وجود العديد من الشواهد الأثرية بالمنطقة بداية من المعابد نزولا إلى الجرافيتي (النقوش الصخرية) التي أغلبها محفور بالصخور والتي لا تزال بمكانها.

The ancient Egyptian name of the site known today as Gebel el-Silsila was Kheny or Khenu, perhaps “Rowing-Place” (Sethe 1930: 125, note 1, and 1933: 874, note 34; but see Caminos 1977: 441, 444, note 1; Gomaà 1986: 31 - 35; Thiem 2000: 31 - 32). The name is first attested as that of a funerary domain in the 5th Dynasty (Jacquet-Gordon 1962: 59, 115, 432, no. 6). A toponym *Ra-Khen*, attested in the Middle Kingdom, probably refers to the same place (Hayes 1955: 26, 31 - 32). Another designation, *pa mu wab*, “The Pure Water,” applies to the religious dimension of Gebel el-Silsila and was perhaps restricted to a small area at the southern extremity of the site (see

below). No Greek or Coptic name seems to be attested.

The modern Arabic name Gebel el-Silsila, “Mountain of the Chain,” is generally applied to the whole area, but specifically designates the highest elevation on the east bank of the Nile, while the western cliff is called el-Ramadi Gibli (Klemm and Klemm 1993: 242). The word “Silsila” is said to be derived from “Khol-khol,” as it was “sometimes known to the later Egyptians,” meaning barrier or frontier, transformed to Sil-sil or Silsili in Roman times (according to Weigall 1910: 360). There is also an unproven assumption that the place-name Silili in a Latin document dating to about 400 CE refers to Gebel el-



Figure 1. Satellite image of the Gebel el-Silsila area, showing the fault scarp of Nubian sandstone across the Nile.

Silsila (Caminos 1977: 441, 444, note 5).

Location and Layout of Site

Gebel el-Silsila is located in Upper Egypt, about 40 km south of Edfu and 18 km north of Kom Ombo. The site covers an area on both banks of the Nile and is characterized by a massive fault scarp of hard Nubian sandstone traversing the river bed from east to west (Said 1962: 90); this results in the narrowest passage of the Nile in Egypt (fig. 1), where the width of the river measures only about 350 - 400 m, as compared to 800 m at Edfu and 1250 m at Luxor (Caminos 1987b: 58; Lyons 1906: 299).

At least from the Middle Kingdom on, the site was used as a quarry—extensively so from the New Kingdom until Roman times and even later—thereby destroying an unknown number of other features.

While the east bank today is mainly known for the huge quarries dating mostly to Ptolemaic and Roman times (fig. 2), there was also a Predynastic cemetery and a Ramesside temple, probably the only remnant of the settlement Khenu/Kheny. The quarries on the western side are mostly smaller, and here a large number of monuments cut into the rockface have survived (fig. 3). From north to south these are the speos of Horemheb, 32 rock shrines owned by private individuals of the 18th Dynasty, and the so-called Nile stelae dedicated by several Ramesside kings. All along the cliff-face there are numerous rock

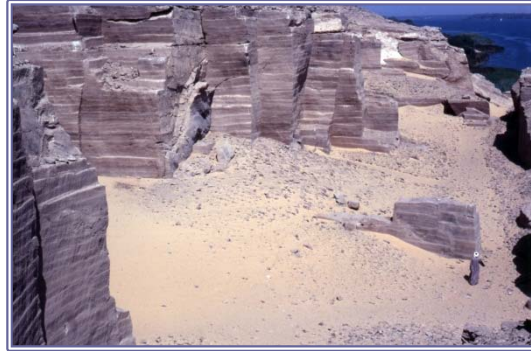


Figure 2. View of a quarry on the eastern bank.

stelae and inscriptions dating to the New Kingdom. Another temple of Horemheb was located a little to the north, at Nag el-Hammam.

In the Middle Kingdom a fortress may have been located at Gebel el-Silsila, as implied by a partially destroyed toponym in a list of Nubian fortresses preserved in Papyrus Berlin 10495 (Gardiner 1916).

While the area of Gebel el-Silsila proper seems to have yielded no related finds, it has lent its name to an Epi-palaeolithic industry—the Silsilian (more recently renamed Ballanan-Silsilian) whose eponymous site is located in the northern part of the Kom Ombo plain. The closely related or even identical Sebekian industry was named after Sobek, Gebel el-Silsila's principal deity (Schyle 1996: 93 - 96; Smith 1966)

Significance/Historical Context

The significance of Gebel el-Silsila was twofold: it became, during the New Kingdom, the most extensive quarry in Egypt, and, in the wake of this rise, it became—for a while—a site of significant religious meaning. As this religious meaning originated in the particular characteristics of the river at Gebel el-Silsila, the significance of the place as a whole rested on its topography.

The quarrying of Nubian sandstone set in, on a rather small scale, during the Middle Kingdom (Bloxam 2010; Harrell 2012;

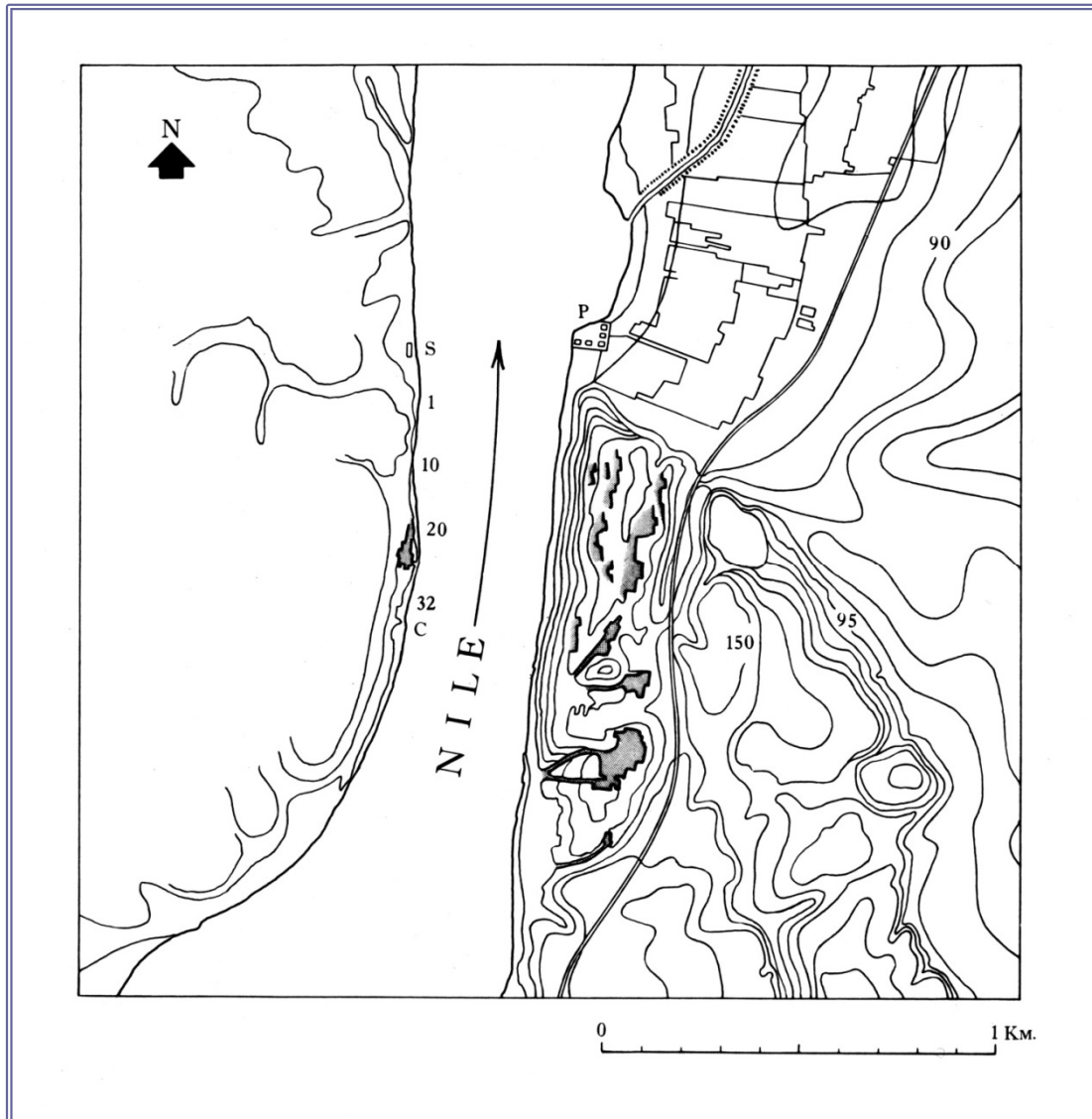


Figure 3. Map of the Gebel el-Silsila area. S = speos of Horemheb, 1 - 32 = 18th Dynasty rock shrines, C = capstan (close to the Ramesside Nile stelae), P = pump-station.

Klemm and Klemm 1993: 243, 247, 251). When, from the reign of Hatshepsut onwards, sandstone replaced limestone as the main building material for temples, quarrying began on a serious scale (Klemm and Klemm 1993: 243 - 251, 259; for New Kingdom quarrying expeditions and selected expedition inscriptions, see Hikade 2001: 47 - 49, 225 - 230). The probable reason for the change of material was the exhaustion of the limestone quarries at Gebelein (de Putter and Karlshausen 1994; also Delvaux 1998). From

now on, virtually all of the great temples—Karnak and Luxor as well as the Theban mortuary temples, Dendera, Esna, Edfu, Kom Ombo—were built with sandstone from Gebel el-Silsila, the one notable exception being the Temple of Isis at Philae (Klemm and Klemm 1993: 259). The amount of sandstone quarried in Gebel el-Silsila during Pharaonic times is estimated at eight million tons, making up more than half of the Egyptian total (Klemm and Klemm 2001: 638). Quarrying continued at least into the late twentieth century (Camino 1987b: 64;

Klemm and Klemm 1979: 132, 135, 1993: 243, 250, 251).

The cultic dimension of Gebel el-Silsila was firmly associated with the Nile and its inundation. The principal deity and the only one given the epithet “Lord of Kheny” was Sobek, who had been venerated at least since the 12th Dynasty (Godron 1965: 197 - 198; Griffith 1898: 69, pl. XXVIII; see also Altenmüller and Moussa 1991: 20 [“Sobek” a more probable option than “Hapi”]). Nun is mentioned in several of the 18th Dynasty rock shrines, while the Nile stelae were dedicated to Hapi. The New Kingdom was undoubtedly the zenith of the religious importance of Gebel el-Silsila. According to the extant monuments, cultic activity at the site practically came to an end with the passing of that era. Even though Sobek, Lord of Kheny, was still mentioned in the nearby Ptolemaic temple of Kom Ombo (see Yoyotte 1962: 103, note 3), there is no attestation of him at Gebel el-Silsila itself after the Ramesside Period. The reason for the inclusion of Gebel el-Silsila in a list of places said to have been founded by Shu (on the 30th Dynasty naos from el-Arish) is unclear, but may be sought in the importance of the place as a quarry for temple buildings rather than in its cultic relevance (Goyon 1936: 20 l. 35).

During the New Kingdom the religious significance of the river was emphasized by the cult-topographical designation *pa mu wab*, “the Pure Water,” which first occurs during the reigns of Amenhotep II or Thutmose IV (Caminos and James 1963: 34, pl. 25/4) and Horemheb (Thiem 2000: 33, 246 - 247) as an epithet to an unspecified group, the “gods in the Pure Water.” It is almost exclusively in the Ramesside Nile stelae that the epithet “dwelling in the Pure Water” is attached to specific deities such as Amun-Ra, Osiris, Horus, Geb, Nut, Shu/Onuris-Shu, Thoth, and Taweret (Champollion 1844: 250, 641, 1845: pls. CIII/1/3, CXXIIbis/3; Lepsius 1853: pls. 175c, 200e; Thiem 2000: 33). The “Pure Water,” also mentioned in the main text of the Nile stelae, perhaps specifically designates the little plateau at the southern

end of Gebel el-Silsila above which the Nile stelae rise, as well as the river in front of it (Kucharek 1998: 20 - 21, *fc.*). The epithet *pa mu wab*, “(of) the Pure Water,” invariably attached to the goddess Taweret, also occurs several times at Deir el-Medina, clearly as an import from Gebel el-Silsila (Kucharek 1998: 86 - 87). On one stela from Deir el-Medina she is even called “mistress of the Pure Water” (*henut mu wab*; Hodjash and Berlev 1982: 135 - 136, no. 76).

It is also worth mentioning that Gebel el-Silsila is one of the few places north of the first cataract where the Elephantine triad Khnum, Satet, and Anuket was venerated (Valbelle 1981: 125 - 126, §45).

Another conspicuous feature of the cults at Gebel el-Silsila during the New Kingdom is the role of the king not merely as officiant, but very often as addressee of private veneration, as dispenser of favors, and as an intermediary for private individuals (Kucharek 1998: 99 - 102, *fc.*).

East Bank

1. Quarries. Quarrying began in the Middle Kingdom at the northern boundary of the area, progressing ever further to the south in the course of the New Kingdom and later (Klemm and Klemm 1993: 247 - 253; for the quarrying of talatat blocks at Gebel el-Silsila, see Kramer 2009). A notable feature is a basin used for loading stones during the inundation season, built in the 18th Dynasty (Klemm and Klemm 1993: 249 - 250, fig. 282). The walls of the biggest quarry, dating to Ptolemaic times, measure up to 40 m in height (Klemm and Klemm 1993: 251).

2. Shrines, stelae, statues, graffiti. While less numerous than on the west bank, there are still a number of Pharaonic monuments in the eastern quarries (*PM V*: 220 - 221; for a map, see Klemm and Klemm 1981: 42 - 43, fig. 44), among them 24 stelae (Caminos 1987b: 59). There are several rock stelae and shrines from the time of Amenhotep III, at least two of them dedicated by his vizier Amenhotep (Caminos 1987a; Klemm und Klemm 1993:

247, 249, fig. 281; Legrain 1903b; Topozada 1975: 100, 300 - 301, 302 - 304, 402 - 403). Two stelae, one of them uninscribed, date to the Amarna Period (Caminos 1987b: 59 - 60; Klemm 1988: 43, 44, fig. 2; Klemm and Klemm 1993: 247, 248, fig. 279; Sandman 1938: 143 - 144; Topozada 1975: 101). Two additional stelae date to the reign of Sety I (Brand 2000: 262 - 264; Kitchen 1975: 59 - 61). The cartouches of Apries find an exact counterpart on a cliff near Aswan (Klemm and Klemm 1993: 251).

There are several unfinished statues in some of the quarries (Caminos 1977: 442; Klemm and Klemm 1993: 247, 248, fig. 280, 250, fig. 283).

The walls of the quarries are covered by a huge number of graffiti and rock-carvings from all stages of Egyptian history down to the present (Caminos 1987b: 60 - 61; Cervicek 1974: 88, figs. 472 - 478; Klemm and Klemm 1993: 248, fig. 278; Osing 2004; Preisigke and Spiegelberg 1915; see also Huyge 2009 for "graffiti" and "rock art").

3. Nilometers. Two nilometers as well as a Nile level inscription, probably all dating to Roman times, are located on the east bank (Borchardt 1934; Klemm and Klemm 1993: 251).

4. Temple and settlement. To the north of the quarries are some remains of a temple dating to the reign of Ramesses II (Borchardt 1934: 195, fig. 1, 196; Griffith 1889a: 233; Leclant 1982: 87; Lepsius 1901: 96). This and "a great deal of pottery" mentioned by Griffith indicate that the ancient town Kheny/Khenu was located here.

5. Cemetery. Also to the north of the quarries, close to the stela of Amenhotep IV and the village of Nag el-Kagug, there was a Predynastic cemetery that, following a three-day excavation, was pillaged by tomb-robbers (Legrain 1903d). The finds, many of which seem to have been given to the Musée d'archéologie nationale in Saint-Germain-en-Laye, date to the Naqada Period (cf. Beck et al. 1982, 138 - 141; Graff 2009: nos. 191, 548, 594, 621 - 623, 625).



Figure 4. Speos of Horemheb, façade.

West Bank

1. Quarries. The quarries on the west bank date mainly to the New Kingdom, the quarry at the northern extremity being the largest in Gebel el-Silsila; smaller areas were exploited in the Middle Kingdom and in the Ptolemaic era (Klemm and Klemm 1993: 243 - 247).

2. Temples. Two temples are attested on the west bank, both dating to the reign of Horemheb. The remains of one of them, at Nag el-Hammam, were completely destroyed in the 1970s by modern quarrying with explosives. The most conspicuous item from that site is part of a stela showing the king offering a field to Osiris and Isis. This temple seems to have been part of a contemporary settlement (Caminos 1987b: 64; *PM V*: 208; Sayce 1907: 98; Thiem 2000: 30).

About 350 - 450 m to the south of this temple is the so-called "speos of Horemheb" (Thiem 2000), probably a former gallery quarry (Klemm 1988: 44 - 45; Klemm and Klemm 1993: 245 - 247; see also Thiem 2000: 28). The rock-cut temple consists of a broad gallery connected to the outside by five openings, the middle one being the principal entrance (fig. 4). This main axis is prolonged into the sanctuary. Both gallery and sanctuary teem with unusual features. On the back wall of the sanctuary, statues of the seven main cult recipients are cut out of the rock (fig. 5; Seidel 1996: 247 - 253, pls. 61b - 62; Thiem 2000: 107 - 108, 240 - 242). Amun-Ra occupies the center, flanked by Mut to his right and Khons to his left. Next to Mut are

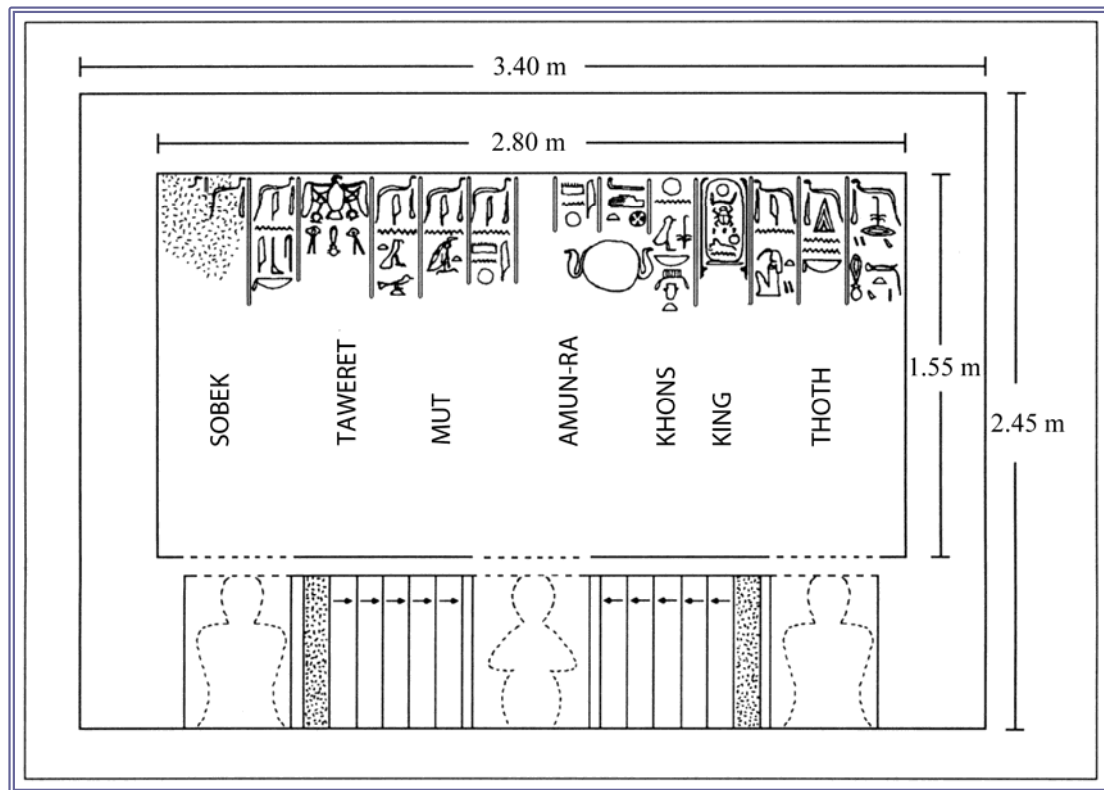


Figure 5. Speos of Horemheb, layout of the back wall of the sanctuary.

Taweret and Sobek. The king himself is placed between Khons and Thoth. While Taweret is not the central deity, she is singled out by the relief of a vulture suspended above her statue. The statues stand upon a kind of high ledge, in front of which three statues—a kneeling one in the center, flanked by two block-statues—were cut out of the rock; at some point in history all three statues were so completely destroyed that only their outlines remain. Several inscriptions in the sanctuary, however, inform us that the statues belonged to the architect of the temple, Ramose (Caminos 1992; Hofmann and Seyfried 1995: 50; Legrain 1903c; Thiem 2000: 247 - 248, note a). The side walls of the sanctuary are covered by the names and figures of 61 deities (Thiem 2000: 182 - 239). The gallery seems to have been only partly decorated during the reign of Horemheb. The most important scenes are the one on the south wall, showing Taweret suckling the king, and the military scenes on the west wall (Thiem 2000: 103, 104

- 105, 133 - 140, 141 - 153).

Most striking nowadays, however, is the multitude of later, exclusively Ramesside additions in the form of statues, chapels, stelae, and inscriptions by royalty and private individuals alike on the façade and in the gallery (Caminos 1977: 442; Habachi 1956: 53 - 57, pl. II; Kitchen 1979: 391, 393, 394 - 395, 891, 1980: 32, 46, 48, 1982: 73 - 74, 89 - 91, 125, 134, 147 - 148, 292, 371, 373 - 374, 1983a: 227 - 229, 341, 342, 393 - 394, 419, 1989: 245 - 246; *PM V*: 213; Radwan 1976; Sourouzian 1989: 3, 197 - 198, pls. 2, 37; Thiem 2000: 243 - 248). Among them are stelae, reliefs, and inscriptions by the High Priest of Memphis Khaemwaset, several of them commemorating jubilee festivals of his father Ramesses II (Gomaà 1973: 88 - 89, 126 - 130; Habachi 1971; Kitchen 1979: 377, 384 - 385, 390 - 391, 392).

3. Rock shrines. Thirty-two rock-chapels cut into the cliff-face above the Nile (fig. 6) are

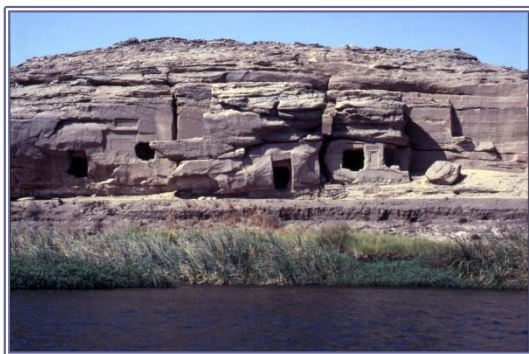


Figure 6. 18th Dynasty rock-shrines, view of nos. 3 - 7 (right to left).

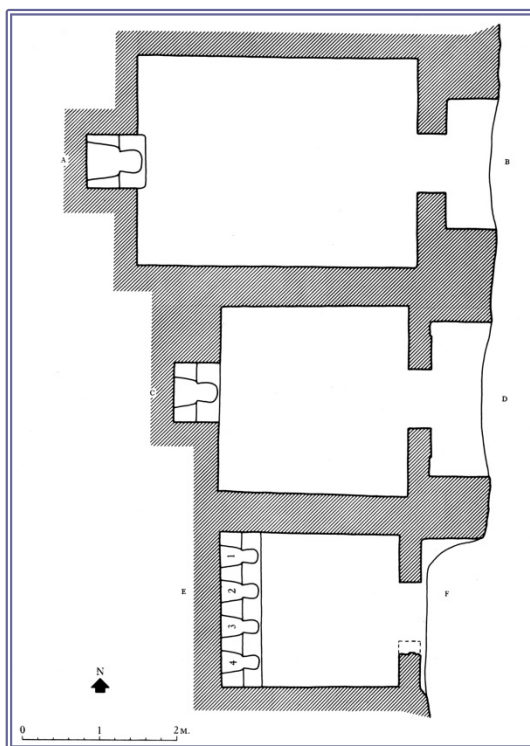


Figure 7. 18th Dynasty rock-shrines, ground-plans of nos. 15 - 17.

still more or less extant today, between the speos of Horemheb to the north and the Ramesside Nile stelae to the south (Camino and James 1963). The shrines are remarkably uniform as to their architecture, decoration, and inscriptions. In size, however, they vary from about 2 square meters to 18 square meters. Most of them consist of one square or oblong room, at the back of which is a niche containing one or several seated rock-cut

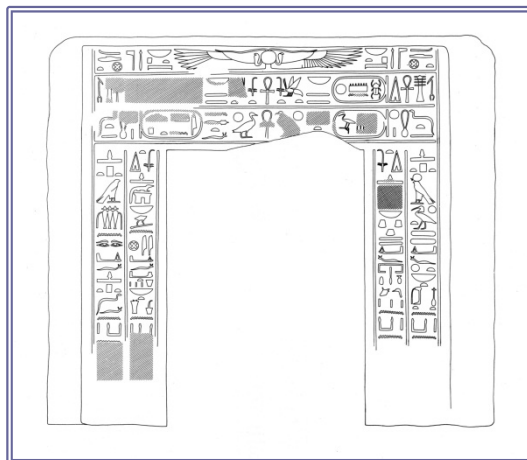


Figure 8. 18th Dynasty rock-shrines, door-frame of no. 30.

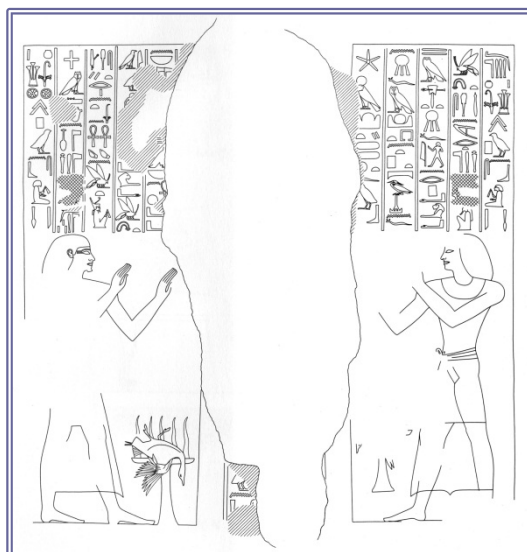


Figure 9. 18th Dynasty rock-shrines, inner entrance-frame of no. 15.

statues (fig. 7). The façade is marked by a doorframe inscribed with offering-formulae on the jambs and royal cartouches on the lintel (fig. 8). The inner entrance wall shows the owner of the shrine offering to the sun god, Amun-Ra on the north side and Ra-Harakhte on the south side (fig. 9). The decoration of the two side walls is more or less identical: both show the owner and his family receiving offerings, accompanied by offering-bringers, musicians, and dancers (fig. 10). The back wall is most often decorated with offering-bringers approaching the statue-



Figure 10. 18th Dynasty rock-shrines, northern side wall of no. 15.

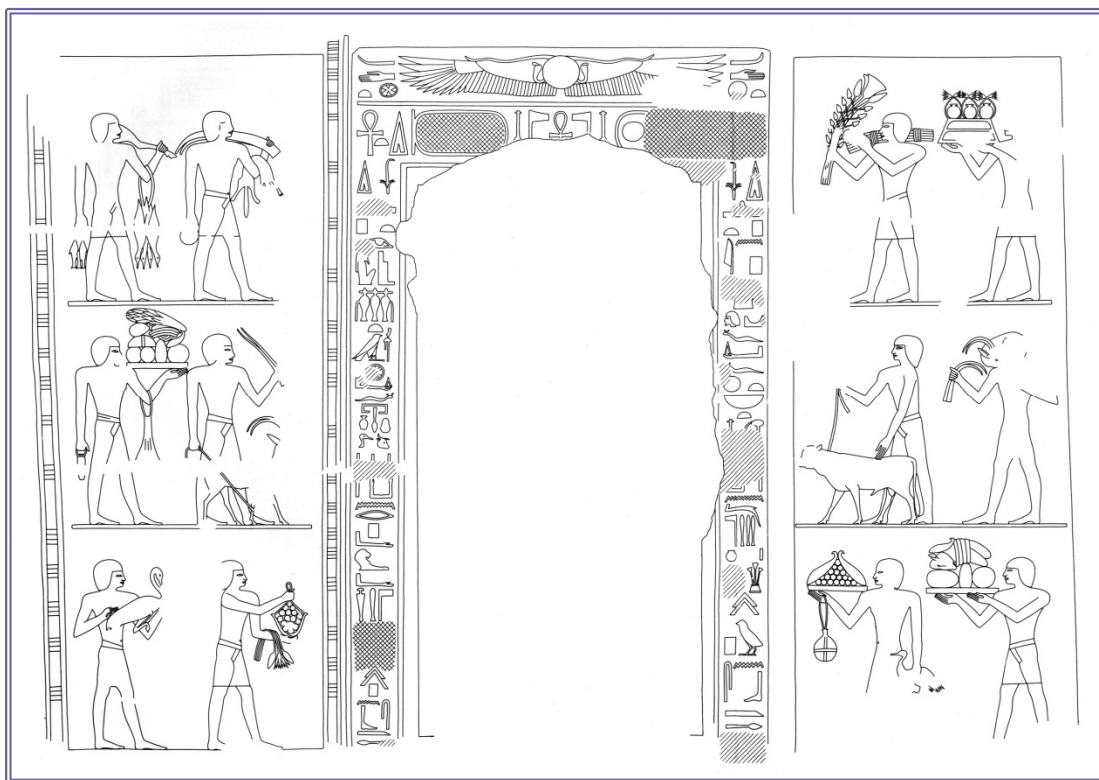


Figure 11. 18th Dynasty rock-shrines, back wall of no. 15.

niche (fig. 11). The frame of the niche frequently replicates the inscriptional structure of the entrance frame.

The owners of the shrines, as far as they can be ascertained, were high officials of the 18th Dynasty, often well-known from other monuments or documents. Fifteen shrines are

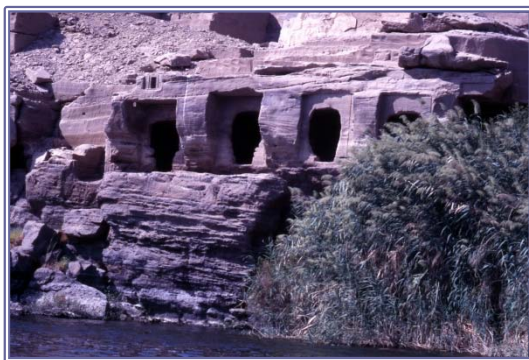


Figure 12. 18th Dynasty rock-shrines, view of nos. 12 - 17.

firmly dated by the royal names on their doorframes: one to the reign of Thutmose I, another to the regency of Hatshepsut, eight to the reign of Hatshepsut, two to the reign of Thutmose III, one to the joint reign of Thutmose III and Amenhotep II, one to the sole reign of the latter king, and one to the reign of Amenhotep III. Eight further shrines can, for various reasons and with a varying degree of certainty, be assigned a date: one (no. 20) to the reign of Thutmose I, two (nos. 25 and 31) to the reign of Thutmose III, one (no. 11) to the reign of Amenhotep II or Thutmose IV, one (no. 27) to the reign of Thutmose IV or Amenhotep III, and three (nos. 1, 2, and 4) to the late 18th Dynasty (from the pre-Amarna Period onwards; Kucharek 1998: 30 - 37). The spatial arrangement of the shrines conveys the impression of their being unrelated to each other, with the exception of nos. 12 - 17, which were constructed side by side and on the same level (fig. 12; Kucharek 1998: 52, *fc.*).

As the shrines contain no burial arrangements (the grave pits in some of the shrines are later intrusions, see Caminos and James 1963: 13, 79), the often-used term “cenotaph” is misleading. The closest parallels are contemporary Theban tomb chapels dedicated to the offering-cult of the deceased and his family (Kucharek 1998: 40 - 42). In combination with the royal cartouches adorning the doorframes, the shrines may most aptly be described as a royal favor consisting of an offering and memorial cult

placed in an area sacred to the life-giving inundation (see below, s.v. “Nile stelae”). The inclusion of musicians, dancers, and, in one case, a song emphasizes the festival character of the occasion (see Kucharek 2000). Considering the location of the shrines in the cliff face, the performance of the cult will have been largely virtual. Some authors have advanced the view that the cult was meant to be performed by the inundation itself, entering the shrines (as well as the *speos* of Horemheb) at high Nile (Bommas 2003; Delvaux 1998: 318; Thiem 2000: 267 - 268). While there is every reason to think that the shrines were constructed as closely as possible to the inundation, sometimes resulting in the partial flooding of the structures, there is no reason (and no clue in the decoration of the shrines) why they should willingly have been exposed to the destructive force of the water.

The one exceptional shrine is that of the famous courtier of Hatshepsut, Senenmut (no. 16), the decoration of which only partly conforms to the general principles outlined above. On the side walls Senenmut offers to various deities who reciprocate with gifts of life, stability, and dominion, while on the back wall, flanking the statue niche, Hatshepsut is embraced by Sobek and Nekhbet. The decoration of this shrine thus approximates that of a temple, with Senenmut replacing the king on the side walls. Some features of the heavily damaged niche statue indicate that it was of the theophorous type, functioning as a kind of sanctuary to Sobek and Nekhbet (Kucharek *fc.*).

4. “Nile stelae.” At the southern end of the west bank there is a small plateau above the Nile surrounded by several huge, shrine-like stelae, set deep into the rock and flanked by papyrus columns (fig. 13; Barguet 1952). They were dedicated by Sety I, Ramesses II, Merenptah (Sourouzian 1989: 191 - 196), and Ramesses III. While the first three are very similar architecturally and are all cut into the cliff facing the Nile, the latest one is a simple rectangular stela cut into a freestanding rock on the north side of the plateau. This does not necessarily reflect the waning religious

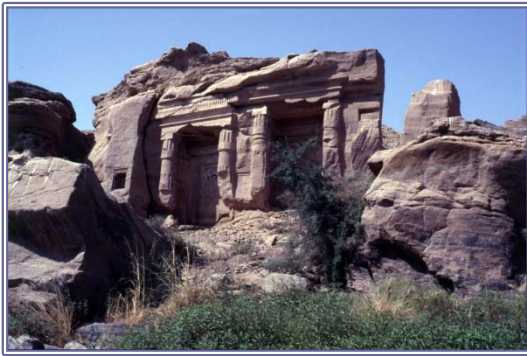


Figure 13. The Nile stelae of Ramesses II (left) and Merenptah (right). To the right of the Merenptah stela there are the remains of another, unfinished stela.

importance of the site in the 20th Dynasty. Much rather it was the consequence of simple bad luck. Immediately to the right of the stela of Merenptah are the remains of a further great stela, albeit without the flanking columns. Only the cavetto-cornice and the upper part of the frame are partly finished, and only the left part of the stela is extant. Perhaps the loss of the right edge of the cliff occurred during the construction of the stela, resulting in the modest substitute on the nearby rock (Kucharek 1998: 15, note 69, *fc.*).

Below the stela of Sety I, a staircase cut into a now dislocated rock leads down to the river (Griffith 1889b: 102; Klemm and Klemm 1993: 244 - 245, fig. 275). Griffith also mentions a second flight of steps leading up from the river to the stela of Ramesses II.

While the date of the first stela is lost, those of Ramesses II and Merenptah were dedicated in their first year, that of Ramesses III in his sixth year. The main inscriptions as well as the adoration scenes on the side walls of the recesses (Kitchen 1975: 81 - 96, no. 44, 1982: 74 - 76) are very similar, but not completely identical. The stelae commemorate a thrice-yearly offering to Hapi, the god of the inundation (including a rite called the “throwing of the book of Hapi,” *cf.* Grandet 1994: 143 - 150, note 593), here at the southern end of the narrow passage where the waters of the rising flood must have been most conspicuous and where, even at the time

of the lowest Nile, the water level seemed higher than anywhere else. It was precisely at the time of the first rising of the inundation and at the time of the lowest level that offerings were presented to Hapi at this place (Kucharek 1998: 58 - 59). The purpose of these offerings as stated by the stela text was “to cover the *djeseru* of the Duat,” which most probably refers to the protection of the corpse of Osiris in the Underworld (Kucharek 1998: 60 - 65, *fc.*).

5. Other monuments. From the speos of Horemheb down to the Nile stelae, the cliff face is covered by numerous stelae and inscriptions, mostly by private individuals (*PM* V: 213 - 216; for several Ramesside ones, see Kitchen 1979: 851, 1982: 91 - 92, 133, 1983a: 342, 1983b: 224 - 225). The largest of these stelae, dedicated by Shoshenq I (Caminos 1952), is also one of the very few monuments dating after the New Kingdom. Another one, some 100 m south of the Nile stelae and dating to the Ptolemaic and Roman Periods, depicts the god Heron (Caminos 1977: 443; Klemm and Klemm 1993: 247). Even further south is the so-called “Rhetorical Stela” of Sety I (Brand 2000: 264; Kitchen 1975: 80 - 81).

About 300 graffiti and rock-carvings, ranging in date from Predynastic to Roman times and beyond, were recorded in Gebel el-Silsila West (Caminos 1987b: 62 - 63, 64 - 65; Osing 2004).

Excavation/Research History

Omitting descriptions and illustrations by early travelers and the Napoleonic expedition (*cf.* Caminos and James 1963: 10), the research history of Gebel el-Silsila begins with Champollion’s and Rosellini’s expedition, which spent several days on the west bank in 1829, describing and copying mainly Ramesside monuments (Champollion 1844: 248 - 265, 640 - 650, 1845: pls. CII - CXXII; Rosellini 1832: pls. XLIV, XLIVbis, XLIVter, XLIVquater, XLIV quinquies, CXIX - CXXI, 1838: 215 - 216, 1844a: 206 - 235, 1844b: pls. XXX - XXXVII). The same applies to Lepsius’ expedition, which spent a few days in

1843 and 1844 on both banks of the Nile. Besides copying Ramesside material, Lepsius was the first to publish inscriptions from the 18th Dynasty rock shrines (Lepsius 1853: pls. 81, 110, 119 - 121, 141, 174, 175, 218, 200 - 202, 223, 254, 274, 1856: pl. 23, 1901: 84 - 100). These early documentations are still indispensable, as the rock stelae and inscriptions remain virtually unpublished to this day.

In the winter of 1886/1887, Griffith and Petrie managed to copy, in the course of less than two days, almost all of the texts belonging to the 18th Dynasty shrines, making note also of the principal stelae and inscriptions (Griffith 1889b). Additionally, they accomplished some work in the quarries on the east bank (Griffith 1889a: 232 - 234).

In 1897 Legrain undertook a short excavation of a Predynastic cemetery on the east bank (Legrain 1903d); he also published articles on several subjects relating to Gebel el-Silsila (Legrain 1903a, 1903b, 1903c). In 1906 Sayce excavated several sites, mostly to the north and south of Gebel el-Silsila proper, among them the surroundings of the temple of Horemheb at Nag el-Hammam (Sayce 1907). De Morgan, in 1906 - 1908, conducted a survey of Predynastic and Early Dynastic sites between Gebel el-Silsila and Esna, reporting, however, very few finds from Gebel el-Silsila (Bard 1994: 270; Needler 1984: 49, 63 - 64).

In 1952 Barguet published a synopsis of the main texts of the Nile stelae (augmented by Kitchen 1975); for copies of at least some of the adoration scenes on the thicknesses of the stelae recesses, one still has to consult the volumes by Champollion, Rosellini, and Lepsius.

A complete recording of all monuments of Gebel el-Silsila was undertaken by the Egypt Exploration Society under R. A. Caminos (Caminos 1955). The project commenced in 1955 and was successfully concluded in 1982 (Caminos 1987b: 57 - 58). It is much to be regretted that, with the single exception of the 18th Dynasty rock shrines (Caminos and James 1963), none of this material, stored in the archives of the Egypt Exploration Society, has since been published.

In 2000 Thiem published her dissertation on the speos of Horemheb, including a complete record of this temple, excluding, however, all of the numerous later additions to this structure.

In recent years the site of Gebel el-Silsila has been developed for visitors, entailing the clearing of some parts of the area (Storemyr 2009: 107). Moreover, the Supreme Council of Antiquities' Department of Underwater Archaeology has recently started mapping out the quarry harbor (information kindly provided by W. Wendrich). Graffiti by travelers have been collected by de Keersmaecker (2011).

Bibliographic Notes

There is as yet no comprehensive treatment of the site. For the quarries, see the valuable section in Klemm and Klemm (1993) as well as the useful map of Gebel el-Silsila in Klemm and Klemm (1979). A concise overview of the graffiti is included in Smith (1999). The most important publications on the religious monuments have been noted in the previous section. For the sake of brevity and clarity, citations for the *Translation and Annotation* as well as the *Notes and Comments* volumes of Kitchen's *Ramesside Inscriptions* have not been included; they may easily be inferred from the citations for the initial volumes.

References

- Altenmüller, Hartwig, and Ahmed Moussa
1991 Die Inschrift Amenemhets II. aus dem Ptah-Tempel von Memphis: Ein Vorbericht. *Studien zur Altägyptischen Kultur* 18, pp. 1 - 48.
- Bard, Kathryn
1994 The Egyptian Predynastic: A review of the evidence. *Journal of Field Archaeology* 21, pp. 265 - 288.
- Barguet, Paul
1952 Les stèles du Nil au Gebel Silsileh. *Bulletin de l'Institut français d'archéologie orientale* 50, pp. 49 - 63.
- Beck, Françoise, Jean-Jacques Cleyet-Merle, Alain Duval, Christiane Eluere, Jean-Pierre Mohen, and Françoise Vallet
1982 *Archéologie comparée: Afrique-Europe occidentale et centrale: Catalogue sommaire illustré des collections du musée des antiquités nationales de Saint-Germain-en-Laye* 1. Paris: Éditions de la Réunion des musées nationaux.
- Bloxam, Elizabeth
2010 Quarrying and mining (Stone). In *UCLA Encyclopedia of Egyptology*, ed. Willeke Wendrich. Los Angeles: University of California. (Internet resource: <http://escholarship.org/uc/item/9bb918sd>.)
- Bommas, Martin
2003 Schrein unter: Gebel es-Silsilah im Neuen Reich. In *Grab und Totenkult im alten Ägypten*, ed. Heike Guksch, Eva Hofmann, and Martin Bommas, pp. 88 - 103. Munich: Beck.
- Borchardt, Ludwig
1934 Nachträge zu "Nilmesser und Nilstandsmarken". *Sitzungsberichte der Preussischen Akademie der Wissenschaften Berlin*, pp. 194 - 202.
- Brand, Peter
2000 *The monuments of Seti I: Epigraphic, historical and art historical analysis*. Probleme der Ägyptologie 16. Leiden: Brill.
- Caminos, Ricardo
1952 Gebel es-Silsilah No. 100. *Journal of Egyptian Archaeology* 38, pp. 46 - 61.
1955 Surveying Gebel es-Silsilah. *Journal of Egyptian Archaeology* 41, pp. 51 - 55.
1977 "Gebel es-Silsile". In *Lexikon der Ägyptologie*, Vol. 2 (columns 441 - 447), ed. Wolfgang Helck, and Wolfhart Westendorf. Wiesbaden: Harrassowitz.
1987a Amenophis III's vizier Amenhotep at Silsilah East. *Journal of Egyptian Archaeology* 73, pp. 207 - 210.
1987b Epigraphy in the field. In *Problems and priorities in Egyptian archaeology, studies in Egyptology*, ed. Jan Assmann, Günter Burkard, and Vivian Davies, pp. 57 - 67. London: KPI.
1992 Phantom architects at Gebel es-Silsila. In *Studies in Pharaonic religion and society in honour of J. Gwyn Griffiths*, Occasional Publications 8, ed. Alan Lloyd, pp. 52 - 56. London: Egypt Exploration Society.
- Caminos, Ricardo, and Thomas G. H. James
1963 *Gebel es-Silsilah I: The shrines*. Archaeological Survey of Egypt 31. London: Egypt Exploration Society.
- Cervicek, Pavel
1974 *Felsbilder des Nord-Etbai, Oberägyptens und Nubiens: Ergebnisse der VIII. DLAFE nach Ägypten 1926*. Ergebnisse der Frobenius-Expeditionen 16. Wiesbaden: Franz Steiner Verlag.
- Champollion, Jean-François
1844 *Monuments de l'Égypte et de la Nubie*. Notices descriptives conformes aux manuscrits autographes rédigés sur les lieux I. Paris: Didot.
1845 *Monuments de l'Égypte et de la Nubie* II. Paris: Didot.

Delvaux, Luc

- 1998 Hatshepsout et le Gebel es-Silsileh: Les carrières d'une reine dangereuse. In *Proceedings of the Seventh International Congress of Egyptologists: Cambridge, 3 - 9 September 1995*, Orientalia Lovaniensia Analecta 82, ed. Christopher Eyre, pp. 317 - 324. Leuven: Peeters.

Gardiner, Alan

- 1916 An ancient list of the fortresses of Nubia. *Journal of Egyptian Archaeology* 3, pp. 184 - 192.

Godron, Gérard

- 1965 Deux objets du Moyen Empire mentionnant Sobek. *Bulletin de l'Institut français d'archéologie orientale* 63, pp. 197 - 200.

Gomaà, Farouk

- 1973 *Chaemwese: Sohn Ramses' II. und Hoberpriester von Memphis*. Ägyptologische Abhandlungen 27. Wiesbaden: Harrasowitz.
1986 *Die Besiedlung Ägyptens während des Mittleren Reiches I: Oberägypten und das Fayyum*. Beihefte zum Tübinger Atlas des Vorderen Orients: Reihe B (Geisteswissenschaften) 66. Wiesbaden: Harrasowitz.

Goyon, Georges

- 1936 Les travaux de Chou et les tribulations de Geb d'après le naos 2248 d'Ismâïlia. *Kémi* VI, pp. 1 - 42.

Graff, Gwenola

- 2009 *Les peintures sur vases de Nagada I - Nagada II: Nouvelle approche sémiologique de l'iconographie prédynastique*. Egyptian Prehistory Monographs 6. Leuven: University Press.

Grandet, Pierre

- 1994 *Le papyrus Harris I (BM 9999) II*. Bibliothèque d'étude 109/2. Cairo: Institut français d'archéologie orientale.

Griffith, Francis Llewellyn

- 1889a Notes on a tour in Upper Egypt. *Proceedings of the Society of Biblical Archaeology* XI, pp. 228 - 234.
1889b Notes on a tour in Upper Egypt: West Silsileh. *Proceedings of the Society of Biblical Archaeology* XII, pp. 89 - 113.
1898 The Petrie Papyri from Kahun and Gurob. London: Quaritch.

Habachi, Labib

- 1956 Amenwahu attached to the cult of Anubis, Lord of the Dawning Land. *Mitteilungen des Deutschen Archäologischen Instituts, Abteilung Kairo* 14, pp. 52 - 62.
1971 The jubilees of Ramesses II and Amenophis III with reference to certain aspects of their celebrations. *Zeitschrift für Ägyptische Sprache und Altertumskunde* 97, pp. 64 - 72.

Harrell, James

- 2012 Utilitarian stones. In *UCLA Encyclopedia of Egyptology*, ed. Willeke Wendrich. Los Angeles: University of California. (Internet resource: <http://escholarship.org/uc/item/77t294df>.)

Hayes, William

- 1955 *A papyrus of the late Middle Kingdom in the Brooklyn Museum [Papyrus Brooklyn 35.1446]*. Brooklyn: Brooklyn Museum.

Hikade, Thomas

- 2001 *Das Expeditionswesen im ägyptischen Neuen Reich: Ein Beitrag zu Rohstoffversorgung und Außenhandel*. Studien zur Archäologie und Geschichte Altägyptens 21. Heidelberg: Orientverlag.

Hodjash, Svetlana, and Oleg Berlev

- 1982 *The Egyptian reliefs and stelae in the Pushkin Museum of Fine Arts, Moscow*. Leningrad: Aurora Art Publications.

Hofmann, Eva, and Karl-Joachim Seyfried

- 1995 Bemerkungen zum Grab des Bauleiters Ramose (TT 166) in Dra Abu el Naga Nord. *Mitteilungen des Deutschen Archäologischen Instituts, Abteilung Kairo* 51, pp. 23 - 56.

Huyge, Dirk

- 2009 Rock art. In *UCLA Encyclopedia of Egyptology*, ed. Willeke Wendrich. Los Angeles: University of California. (Internet resource: <http://escholarship.org/uc/item/4qx7k7pz>.)

Jaquet-Gordon, Helen

- 1962 *Les noms des domaines funéraires sous l'Ancien Empire égyptien*. Bibliothèque 34. Cairo: Institut français d'archéologie orientale.

de Keersmaecker, Roger

- 2011 *Travellers' graffiti from Egypt and the Sudan XI: Gebel el-Silsila: Great speos of Harembab, shrines, quarry, and rock-stelae*. Berchem: Graffito Graffiti.

Kitchen, Kenneth

- 1975 *Ramesseid Inscriptions I*. Oxford: Blackwell.
1979 *Ramesseid Inscriptions II*. Oxford: Blackwell.
1980 *Ramesseid Inscriptions III*. Oxford: Blackwell.
1982 *Ramesseid Inscriptions IV*. Oxford: Blackwell.
1983a *Ramesseid Inscriptions V*. Oxford: Blackwell.
1983b *Ramesseid Inscriptions VI*. Oxford: Blackwell.
1989 *Ramesseid Inscriptions VII*. Oxford: Blackwell.

Klemm, Rosemarie

- 1988 Vom Steinbruch zum Tempel: Beobachtungen zur Baustruktur einiger Felstempel der 18. und 19. Dynastie im ägyptischen Mutterland. *Zeitschrift für Ägyptische Sprache und Altertumskunde* 115, pp. 41 - 51.

Klemm, Rosemarie, and Dietrich Klemm

- 1979 Herkunftsbestimmung altägyptischen Steinmaterials: Bericht über die zweite Kampagne 1979. *Studien zur Altägyptischen Kultur* 7, pp. 118 - 140.
1981 *Die Steine der Pharaonen*. München: Staatliche Sammlung Ägyptischer Kunst.
1993 *Steine und Steinbrüche im Alten Ägypten*. Berlin: Springer.
2001 The building stones of ancient Egypt: A gift of its geology. *African Earth Sciences* 33, pp. 631 - 642.

Kramer, Arris

- 2009 Talatat shipping from Gebel el-Silsileh to Karnak: A literature survey. *Bibliotheca Orientalis* LXVI, pp. 5 - 20.

Kucharek, Andrea

- 1998 *Die Felskapellen der 18. Dynastie in Gebel es-Silsilah*. Unpublished MA thesis: Heidelberg University.
2000 Die frühe Persönliche Frömmigkeit im Fest: Über ein Lied in Gebel es-Silsilah. *Göttinger Miszellen* 176, pp. 77 - 80.
fc. Senenmut in Gebel es-Silsilah. *Mitteilungen des Deutschen Archäologischen Instituts, Abteilung Kairo* 66.

Leclant, Jean

- 1982 Fouilles et travaux en Égypte et au Sudan, 1979 - 1980. *Orientalia* 51, pp. 49 - 122.

Legrain, Georges

- 1903a Notes d'inspection III: La chapelle de Senmaout à Gebel Silsileh. *Annales du service d'antiquités de l'Égypte* 4, pp. 193 - 197.
1903b Notes d'inspection IV: Sur l'architecte Aménôthès qui vécut sous Aménôthès III. *Annales du service d'antiquités de l'Égypte* 4, pp. 197 - 212.
1903c Notes d'inspection V: Sur Maïa, qui vécut sous la règne d'Harmhabi. *Annales du service d'antiquités de l'Égypte* 4, pp. 213 - 218.
1903d Notes d'inspection VI: La nécropole archaïque du Gebel Silsileh. *Annales du service d'antiquités de l'Égypte* 4, pp. 218 - 220.

Lepsius, Karl

- 1853 *Denkmäler aus Ägypten und Äthiopien*. Plates Abt. III, Part 7. Berlin: Nicolai.
1856 *Denkmäler aus Ägypten und Äthiopien*. Plates Abt. VI, Part 11. Berlin: Nicolai.
1901 *Denkmäler aus Ägypten und Äthiopien*. Text IV. Berlin and Leipzig: J. C. Hinrichs.

Lyons, Henry

1906 *The physiography of the river Nile and its basin*. Cairo: National Printing Department.

Needler, Winifred

1984 *Predynastic and archaic Egypt in the Brooklyn Museum: With a reexamination of Henri de Morgan's excavations based on the material in the Brooklyn Museum initially studied by Walter Federn and a special zoological contribution on the ivory-handled knife from Abu Zaidan by C. S. Churcher*. Wilbour Monographs 9. Brooklyn: The Brooklyn Museum.

Osing, Jürgen

2004 Les graffiti de l'Ancien et du Moyen Empire au Gebel el-Silsila. In *Sébel entre Égypte et Nubie: Inscriptions rupestres et graffiti de l'époque pharaonique: Actes du colloque international, 31 mai - 1er juin 2002*, Université Paul Valéry, Montpellier, ed. Annie Gasse, and Vincent Rondot, pp. 3 - 6. Montpellier: Université Paul Valéry.

Porter, Bertha, and Rosalind Moss

1937 *Topographical bibliography of ancient Egyptian hieroglyphic texts, reliefs, and paintings (PM), Vol. V: Upper Egypt: Sites*. Oxford: Griffith Institute.

Preisigke, Friedrich, and Wilhelm Spiegelberg

1915 *Ägyptische und griechische Inschriften und Graffiti aus den Steinbrüchen des Gebel Silsile (Oberägypten)*. Strassburg: Trübner.

de Putter, Thierry, and Christina Karlshausen

1994 Provenance du calcaire de l'architecture thoutmoside à Thèbes. *Göttinger Miszellen* 142, pp. 103 - 107.

Radwan, Ali

1976 Eine Inschrift aus Gebel el-Silsilah. *Mitteilungen des Deutschen Archäologischen Instituts, Abteilung Kairo* 32, pp. 187 - 189.

Rosellini, Ippolito

1832 *I monumenti dell'Egitto e della Nubia I: Monumenti storici: Plates*. Pisa: Capurro.

1838 *I monumenti dell'Egitto e della Nubia I: Monumenti storici: Text*. Pisa: Capurro.

1844a *I monumenti dell'Egitto e della Nubia III: Monumenti del culto: Text*. Pisa: Capurro.

1844b *I monumenti dell'Egitto e della Nubia III: Monumenti del culto: Plates*. Pisa: Capurro.

Said, Rushdi

1962 *The geology of Egypt*. Amsterdam and New York: Elsevier.

Sandman, Maj

1938 *Texts from the time of Akhenaten*. Bibliotheca Aegyptiaca VIII. Brüssel: Fondation Égyptologique Reine Élisabeth.

Sayce, Archibald

1907 Excavations at Gebel Silsila. *Annales du service d'antiquités de l'Égypte* 8, pp. 97 - 105.

Schyle, Daniel

1996 *Das Epipaläolithikum des Vorderen Orients*. Beihefte zum Tübinger Atlas des Vorderen Orients: Reihe B (Geisteswissenschaften) 85. Wiesbaden: L. Reichert.

Seidel, Matthias

1996 *Die königlichen Statuengruppen I: Die Denkmäler vom Alten Reich bis zum Ende der 18. Dynastie*. Hildesheimer Ägyptologische Beiträge 42. Hildesheim: Gerstenberg.

Sethé, Kurt

1930 *Urgeschichte und älteste Religion der Ägypter*. Abhandlungen für die Kunde des Morgenlandes 18/4. Leipzig: Brockhaus.

1933 *Die Bau- und Denkmalsteine der alten Ägypter und ihre Namen*. Sitzungsberichte der Preussischen Akademie der Wissenschaften, Philosophisch-historische Klasse, pp. 864 - 912.

Smith, Mark

- 1999 Gebel el-Silsila. In *Encyclopedia of the archaeology of ancient Egypt*, ed. Kathryn Bard, and Steven Shubert, pp. 394 - 397. London: Routledge.

Smith, Philip

- 1966 The Late Paleolithic of northeast Africa in the light of recent research. *American Anthropologist* 68, pp. 326 - 355.

Sourouzian, Hourig

- 1989 *Les monuments du roi Merenptah*. Sonderschriften des Deutschen Archäologischen Instituts Kairo 22. Mainz: Philipp von Zabern.

Storemyr, Per

- 2009 Whatever else happened to the ancient Egyptian quarries? An essay on their destiny in modern times. In *QuarryScapes: Ancient stone quarry landscapes in the Eastern Mediterranean*, Geological Survey of Norway Special Publication 12, ed. Nizar Abu-Jaber, Elizabeth Bloxam, Patrick Degryse, and Tom Høidal, pp. 105 - 124. Trondheim: Geological Survey of Norway.

Thiem, Andrea-Christina

- 2000 *Speos von Gebel es-Silsileh*. Ägypten und Altes Testament 47. Wiesbaden: Harrassowitz.

Topozada, Zakéya

- 1975 *Les provinces d'Égypte à la fin de la XVIIIe dynastie*. Unpublished Dissertation: Paris.

Valbelle, Dominique

- 1981 *Satis et Anoukis*. Mainz: Philipp von Zabern.

Weigall, Arthur

- 1910 *A guide to the antiquities of Upper Egypt: From Abydos to the Sudan frontier*. London: Methuen.

Yoyotte, Jean

- 1962 Processions géographiques mentionnant le Fayoum et ses localités. *Bulletin de l'Institut français d'archéologie orientale* 61, pp. 79 - 138.

Image Credits

Figure 1. Satellite image of the Gebel el-Silsila area, showing the fault scarp of Nubian sandstone across the Nile. Image by Google Maps.

Figure 2. View of a quarry on the eastern bank. Photograph by Eva Hofmann.

Figure 3. Map of the Gebel el-Silsila area. S = speos of Horemheb, 1 - 32 = 18th Dynasty rock shrines, C = capstan (close to the Ramesside Nile stelae), P = pump-station. (Caminos and James 1963: pl. 1. Courtesy of the Egypt Exploration Society.)

Figure 4. Speos of Horemheb, façade. Photograph by Eva Hofmann.

Figure 5. Speos of Horemheb, layout of the back wall of the sanctuary. (Seidel 1996: 252, fig. 71. Courtesy of M. Seidel)

Figure 6. 18th Dynasty rock-shrines, view of nos. 3 - 7 (right to left). Photograph by Eva Hofmann.

Figure 7. 18th Dynasty rock-shrines, ground-plans of nos. 15 - 17. (Caminos and James 1963: pl. 33. Courtesy of the Egypt Exploration Society.)

Figure 8. 18th Dynasty rock-shrines, door-frame of no. 30. (Caminos and James 1963: pl. 73. Courtesy of the Egypt Exploration Society.)

Figure 9. 18th Dynasty rock-shrines, inner entrance-frame of no. 15. (Caminos and James 1963: pl. 36. Courtesy of the Egypt Exploration Society.)

- Figure 10. 18th Dynasty rock-shrines, northern side wall of no. 15. (Caminos and James 1963: pl. 37. Courtesy of the Egypt Exploration Society.)
- Figure 11. 18th Dynasty rock-shrines, back wall of no. 15. (Caminos and James 1963: pl. 39. Courtesy of the Egypt Exploration Society.)
- Figure 12. 18th Dynasty rock-shrines, view of nos. 12 - 17. Photograph by Eva Hofmann.
- Figure 13. The Nile stelae of Ramesses II (left) and Merenptah (right). To the right of the Merenptah stela there are the remains of another, unfinished stela. Photograph by Eva Hofmann.